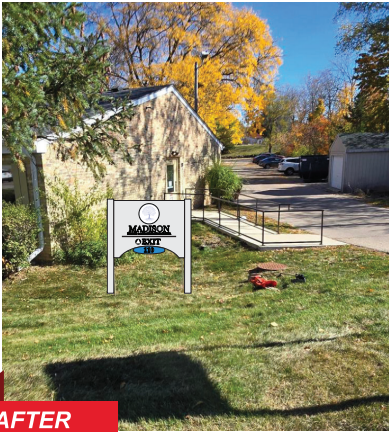


PROPOSED NEW MONUMENT SIGN - SINGLE SIDED

SIGN A

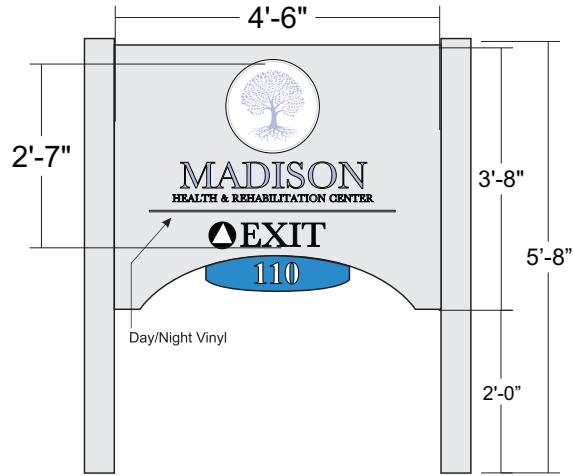


BEFORE

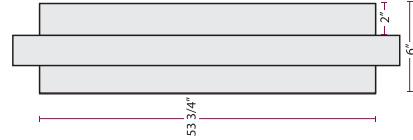


AFTER


SECONDARY SIGN - FRONT




SECONDARY SIGN - TOP



NIGHT VIEW

SQFT CALCULATION 	
Wide:	4'-6"
High:	2'-7"
Total SQFT:	12.15

ELECTRICAL 
120/277 VOLTS 2 AMPS
<small>PRIMARY ELECTRICAL CONNECTIONS TO BE MADE BY LICENSED ELECTRICAL CONTRACTORS</small>

Rev. 10-31-24

Init. Overlays are for illustrative purposes only. Final result, size of sign & scale may vary very slightly



DATE	10-25-24
REVISION	A
PROJECT NAME	MADISON 101
ADDRESS	110 Belmont Rd. Madison, WI 53714
SIGN TYPE	MONUMENT SIGN
DESIGNER	AV

SCALE	P-1/1
<small>COLORS ON PROOF MAY VARY FROM ACTUAL PRODUCT USED</small>	

PROPOSED NEW MONUMENT SIGN - DOUBLE SIDED

SIGN C



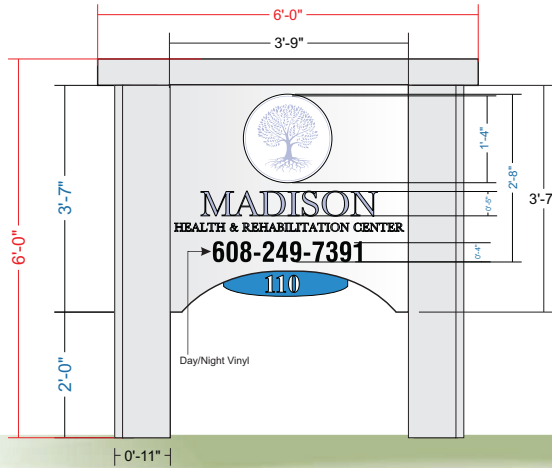
BEFORE



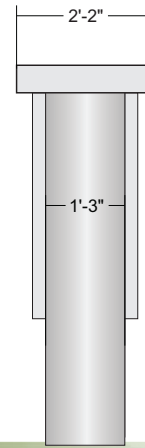
AFTER

Rev. 10-28-24

MAIN SIGN - FRONT



MAIN SIGN - SIDE



NIGHT VIEW

SQFT CALCULATION	
Wide:	3'-9"
High:	2'-8"
Total SQFT:	10.92

ELECTRICAL
120/277 VOLTS
2 AMPS
<small>PRIMARY ELECTRICAL CONNECTIONS TO BE MADE BY LICENSED ELECTRICAL CONTRACTORS</small>

Init. Overlays are for illustrative purposes only. Final result, size of sign & scale may vary very slightly



DATE	10-25-24
REVISION	A
PROJECT NAME	MADISON 101
ADDRESS	110 Belmont Rd. Madison, WI 53714
SIGN TYPE	MONUMENT SIGN
DESIGNER	AV

SCALE
P-1/1
<small>COLORS ON PROOF MAY VARY FROM ACTUAL PRODUCT USED</small>

PROPOSED NEW MONUMENT SIGN - SINGLE SIDED

SIGN D

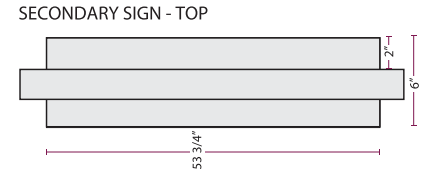
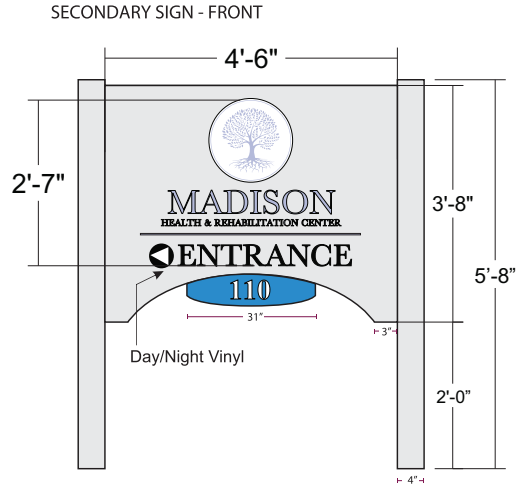


BEFORE





AFTER

Rev. 10-31-24



NIGHT VIEW

SQFT CALCULATION 	
Wide:	4'-6"
High:	2'-7"
Total SQFT:	12.15

ELECTRICAL 
120/277 VOLTS 2 AMPS
<small>PRIMARY ELECTRICAL CONNECTIONS TO BE MADE BY LICENSED ELECTRICAL CONTRACTORS</small>

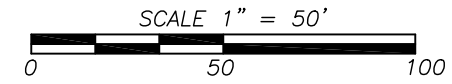


DATE	10-25-24
REVISION	A
PROJECT NAME	MADISON 101
ADDRESS	110 Belmont Rd. Madison, WI 53714
SIGN TYPE	MONUMENT SIGN
DESIGNER	AV

SCALE	P-1/1
-------	-------

Init. Overlays are for illustrative purposes only. Final result, size of sign & scale may vary very slightly.

COLORS ON PROOF MAY VARY FROM ACTUAL PRODUCT USED



Description:

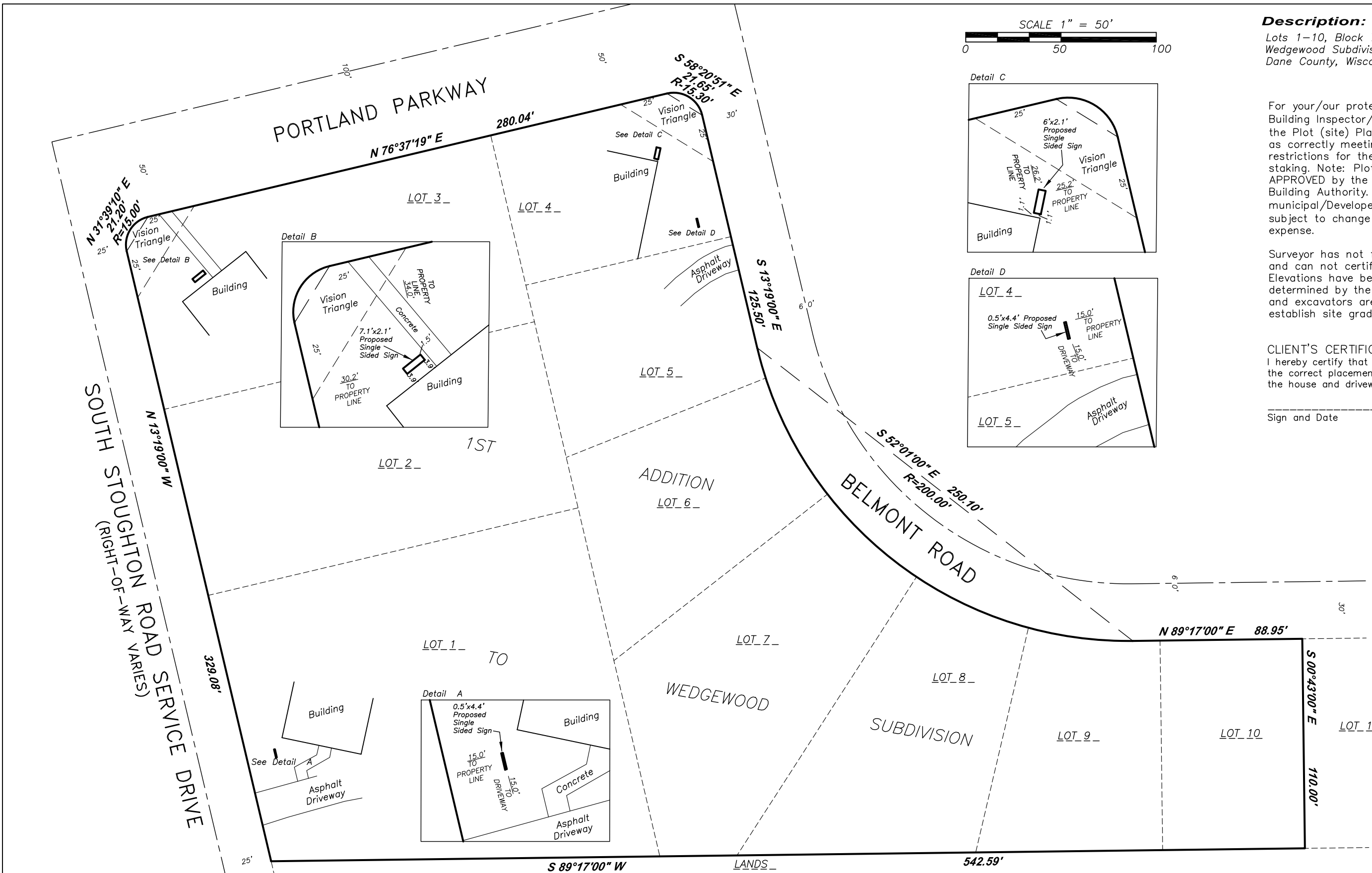
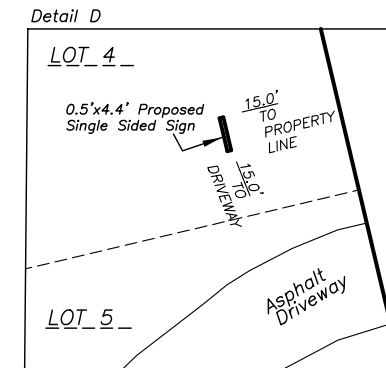
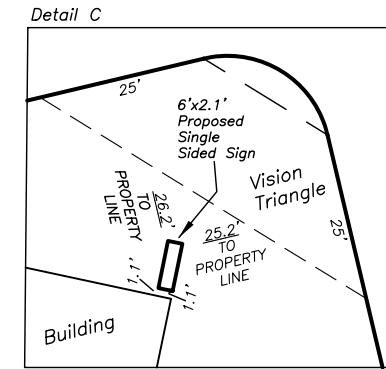
Lots 1-10, Block 7, First Addition to Wedgewood Subdivision, City of Madison, Dane County, Wisconsin.

For your/our protection...have the Building Inspector/Developer sign off on the Plot (site) Plan accepting the Plan as correctly meeting setback and deed restrictions for the parcel PRIOR to staking. Note: Plot Plan MUST BE APPROVED by the governing Municipal Building Authority. ANY staking, without municipal/Developer approval, may be subject to change at the client's expense.

Surveyor has not field verified elevations and can not certify to their accuracy. Elevations have been provided and determined by the client. Contractors and excavators are to field verify and establish site grades.

CLIENT'S CERTIFICATE:
I hereby certify that this survey represents the correct placement and dimensioning of the house and driveway within said lot.

Sign and Date



BIRRENKOTT SURVEYING
LAND SURVEYING & PERC TESTING
BIRRENKOTTSURVEYING.COM

P.O. BOX 237
1677 N. BRISTOL ST. SUN PRAIRIE, WIS. 53590 (608) 837-7463
FAX (608) 837-1081

PLOT PLAN

October 22, 2024

Revised: October 31, 2024
Revised: October 25, 2024

SURVEYED BY _____
DRAWN BY B.T.S.
CHECKED BY C.K.C.
APPR'V'D BY C.K.C.

PREPARED FOR:
WISCO SIGN, LLC
ATTN: ALYSSA SHILTS
414 1ST AVENUE
ANTIGO, WI 54409
715-208-2004

JOB NO.
240992
SHEET 1 OF 1
FB