

Site Locator Map
3005 University Avenue
Madison, WI
November 5, 2021





UNIVERSITY AVE

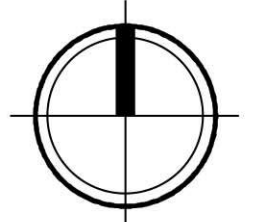
SCHMITT PLACE

PROPOSED MIXED-USE BUILDING
59 UNITS
75 ENCLOSED PARKING STALLS
4-5 STORIES
3005 UNIVERSITY AVENUE

4TH FLOOR ROOF DECK

4TH FLOOR ROOF DECK

2ND FLOOR ROOF DECK



Site Plan
3005 University Avenue
Madison, WI
February 9, 2022

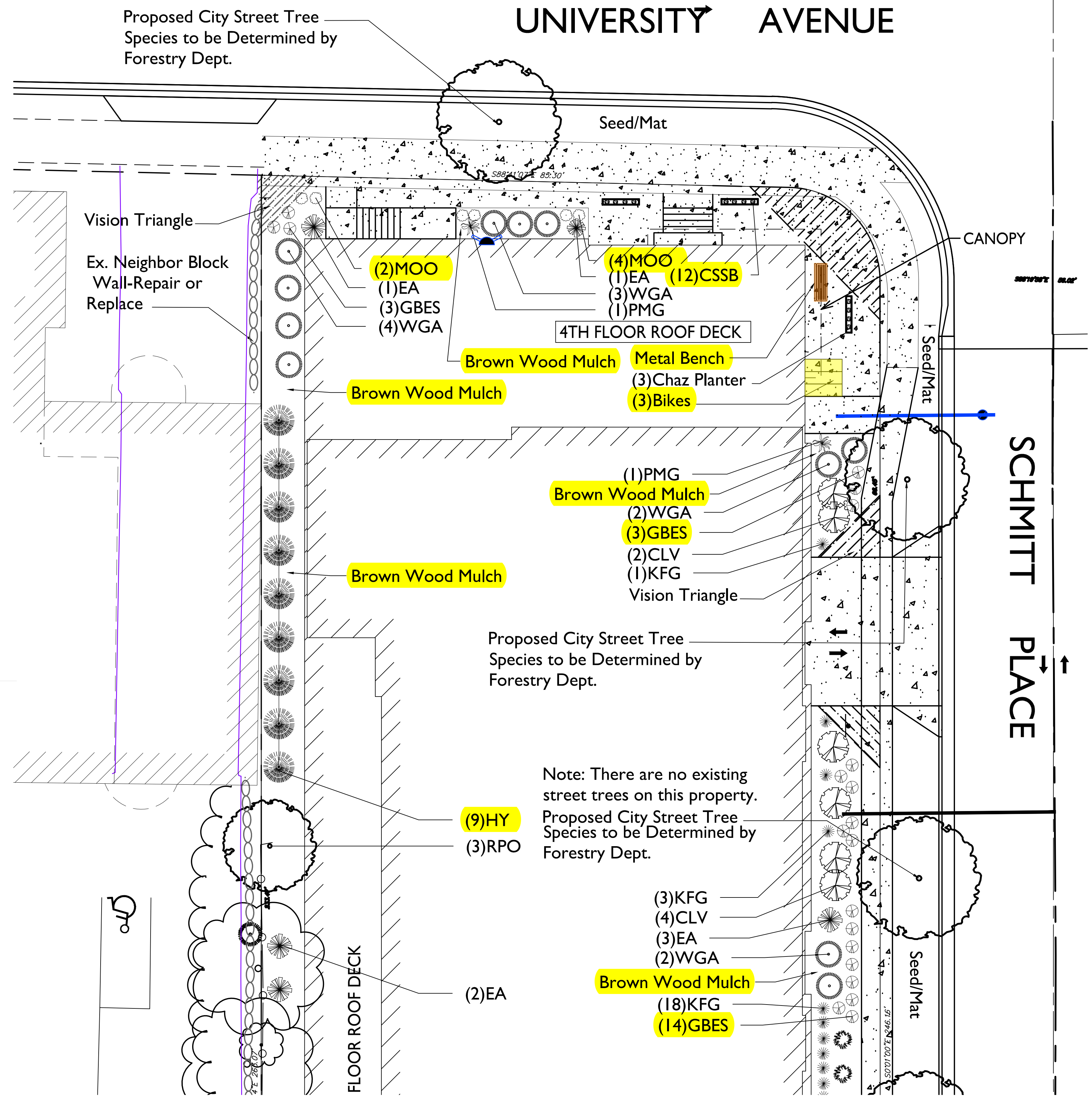
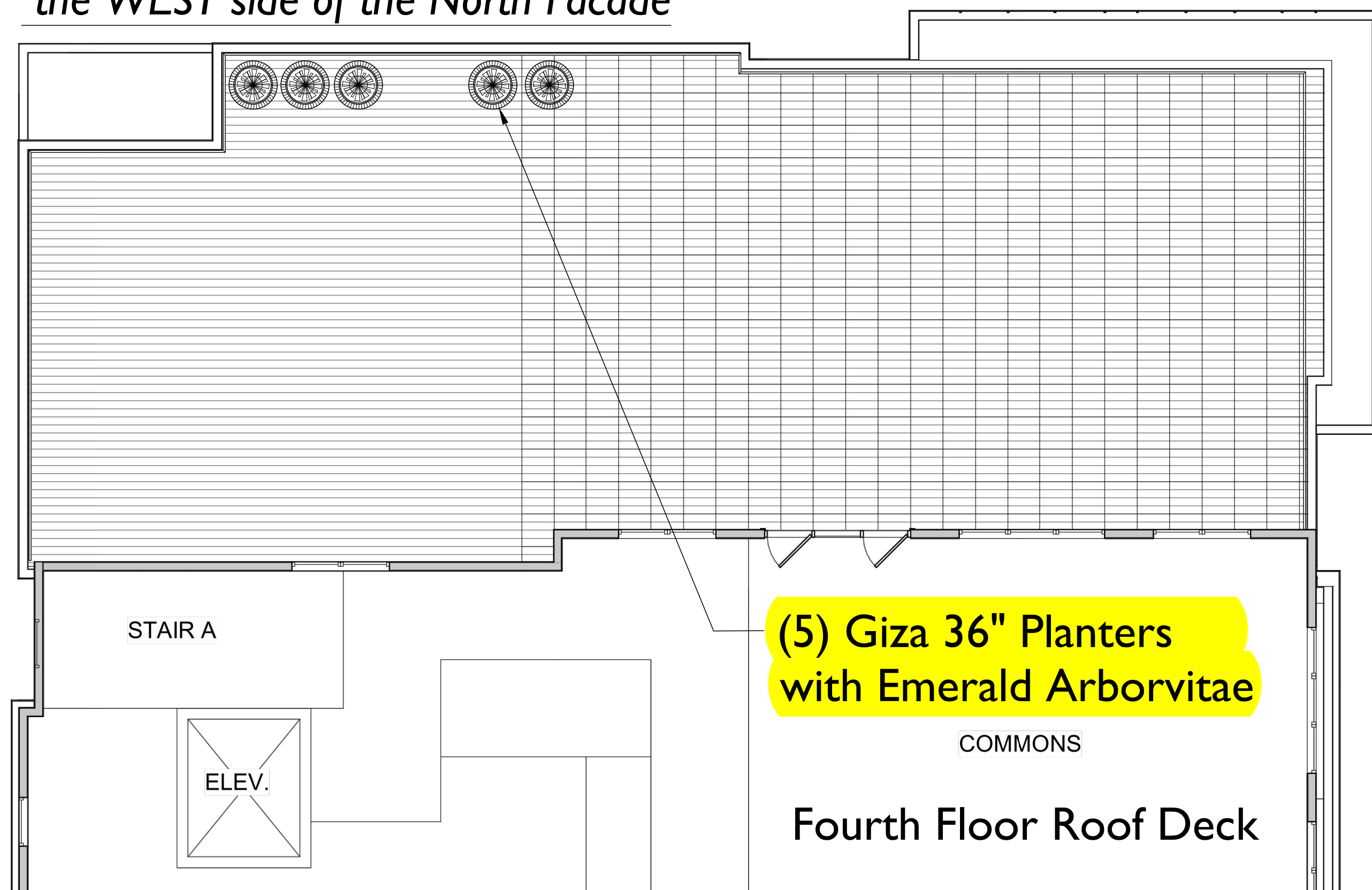


Plant Material List

Broadleaf Deciduous				
Quantity	Code Name	Common Name	Scientific Name	Planting Size
3	SKH	Street Keeper Honeylocust	Gleditsia Triacan 'draves'	2" B&B
1	RPO	Regal Prince English Oak	Quercus Robur 'long'	2 1/2" B&B
Conifer Evergreen				
Quantity	Code Name	Common Name	Scientific Name	Planting Size
9	MMP	Mops Mugo Pine	Pinus Mugo 'mops'	#3 CONT.
9	HY	Hicks Yew	Taxus X Media 'hicksii'	3' B&B
20	EA	Emerald Arborvitae	Thuja Occidentalis 'smaragd'	5' B&B
12	WGA	Woodward Globe Arborvitae	Thuja Occidentalis 'woodwardii'	#5 CONT.
Perennial				
Quantity	Code Name	Common Name	Scientific Name	Planting Size
6	MOO	Millenium Ornamental Onion	Allium 'millenium'	#1 CONT.
53	KFG	Karl Foerster's Feather Reed G	Calamagrostis Acutiflora 'karl Foerster'	#1 CONT.
2	PMG	Purple Maiden Grass	Miscanthus Sinensis Var Purpurescens	#1 CONT.
20	GBES	Goldsturm Black-Eyed Susan	Rudbeckia Ful Var Sullivan 'goldsturm'	#1 CONT.
8	PRD	Prairie Dropseed	Sporobolus Heterolepis	#1 CONT.
Shrub				
Quantity	Code Name	Common Name	Scientific Name	Planting Size
12	CSSB	Cool Splash Southern Bush-Hone	Diervilla Sessilifolia 'lpdc Podaras'	#2 CONT.
6	CLV	Chicago Lustre Arwd Viburnum	Viburnum Dentatum 'synnestvedt'	4' B&B

*NOTE: Street Trees are Not Included in above List

Note: These (5) Planters are to Augment the Railings along the WEST side of the North Facade



ENLARGED LANDSCAPE PLAN

the bruce company
OF WISCONSIN, INC.
LANDSCAPE ARCHITECTS
LANDSCAPE CONTRACTORS
2830 PARKER STREET
P.O. BOX 620330
MIDDLETON, WI 53562-0330
TEL (608) 836-7941
FAX (608) 831-6566

3005 UNIVERSITY AVE. REDEVELOPMENT
3005 UNIVERSITY AVENUE
MADISON WISCONSIN

Checked By: SS
Drawn By: 1-10-22 RS
Revised: 1-12-22 RS
Revised: 2-11-22 RS
Revised: 3-22-22 RS
Revised:
Revised:
Revised:
Revised:
Revised:
Revised:

This plan made exclusively for the party named in the title block. It remains the property of The Bruce Company of Wisconsin, Inc. and may not be reproduced or implemented in whole or part by any method without prior written consent of The Bruce Company of Wisconsin, Inc.

1/2022 CAD/STEVE SHORTHEAD-SPOKES SITE/3005 UNIV AVENUE 2/24/22.DWG Created: 3/22/2022, Saved: 3/22/2022, Printed: 3/22/2022



SIGNAGE

SIGNAGE



SIGNAGE



SIGNAGE

SIGNAGE



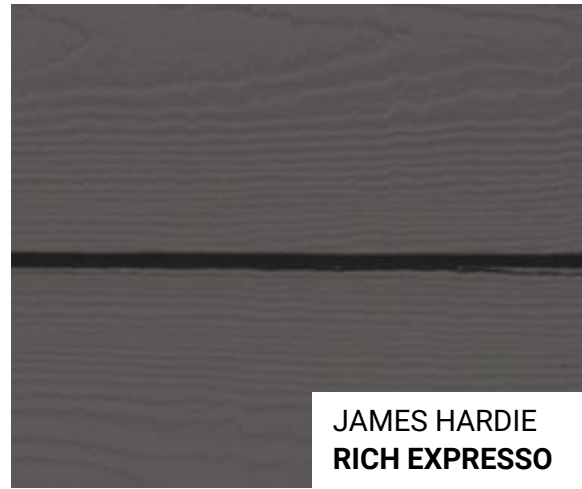
SIGNAGE











JAMES HARDIE
RICH ESPRESSO

#1 – COMPOSITE LAP SIDING



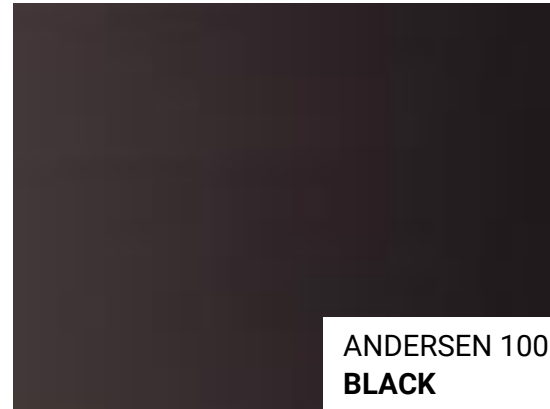
JAMES HARDIE
MATCH SW 6594 POINTSETTIA

#2 – COMPOSIT PANEL SIDING



SIOUX CITY BRICK
STONINGTON GRAY VELOUR

#5 – BRICK VENEER



ANDERSEN 100
BLACK

#8 – COMPOSIT WINDOWS



EXTERIOR MATERIAL SCHEDULE		
BUILDING ELEMENT	MANUFACTURER	COLOR
(#1) - COMPOSITE LAP SIDING	JAMES HARDIE	RICH ESPRESSO
(#2) - COMPOSITE PANEL SIDING	JAMES HARDIE	MATCH SW 6594 POINTSETTIA
METAL PANEL SIDING	TBD	WHITE
COMPOSITE TRIM	JAMES HARDIE	MATCH ADJ. SIDING COLOR
BRICK VENEER	SIOUX CITY BRICK	STONINGTON GRAY VELOUR
CAST STONE BANDS & SILLS	EDWARDS CAST STONE	MATCH PRAIRE STONE GRIS
COMPOSITE WINDOWS	ANDERSEN 100	BLACK
ALUM. STOREFRONT	N/A	BLACK
CANOPY & BAY SOFFITS	JAMES HARDIE	COLOR TO MATCH ADJ. TRIM/SIDING
RAILINGS & HANDRAILS	SUPERIOR	BLACK
TREATED-EXPOSED DECK BEAMS	N/A	BROWN TREATED



**3005 UNIVERSITY AVE
REDEVELOPMENT**

3005 UNIVERSITY
MADISON, WI

02/22/2022
KBA #1838

EXTERIOR MATERIAL SCHEDULE		
BUILDING ELEMENT	MANUFACTURER	COLOR
(#1) - COMPOSITE LAP SIDING	JAMES HARDIE	RICH ESPRESSO
(#2) - COMPOSITE PANEL SIDING	JAMES HARDIE	MATCH SW 6594 POINTSETTIA
METAL PANEL SIDING	TBD	WHITE
COMPOSITE TRIM	JAMES HARDIE	MATCH ADJ. SIDING COLOR
BRICK VENEER	SIoux CITY BRICK	STONINGTON GRAY VELOUR
CAST STONE BANDS & SILLS	EDWARDS CAST STONE	MATCH PRAIRE STONE GRIS
COMPOSITE WINDOWS	ANDERSEN 100	BLACK
ALUM. STOREFRONT	N/A	BLACK
CANOPY & BAY SOFFITS	JAMES HARDIE	COLOR TO MATCH ADJ. TRIM/SIDING
RAILINGS & HANDRAILS	SUPERIOR	BLACK
TREATED-EXPOSED DECK BEAMS	N/A	BROWN TREATED



2 COLORED ELEVATION - NORTH
A-2.3 1/8" = 1'-0"



1 COLORED ELEVATION - EAST
A-2.3 1/8" = 1'-0"

KEY PLAN

ISSUED
Issued for LUA & UDC Submittal - Jan. 10, 2022
Issued for UDC Resubmittal - Feb. 22, 2022

PROJECT TITLE
**SMOKY'S CLUB
REDEVELOPMENT**

3005 University Ave
Madison, Wisconsin
SHEET TITLE
**ELEVATIONS
COLORED**

SHEET NUMBER

A-2.3

PROJECT NUMBER 1838

EXTERIOR MATERIAL SCHEDULE		
BUILDING ELEMENT	MANUFACTURER	COLOR
(#1) - COMPOSITE LAP SIDING	JAMES HARDIE	RICH ESPRESSO
(#2) - COMPOSITE PANEL SIDING	JAMES HARDIE	MATCH SW 6594 POINTSETTIA
METAL PANEL SIDING	TBD	WHITE
COMPOSITE TRIM	JAMES HARDIE	MATCH ADJ. SIDING COLOR
BRICK VENEER	SIoux CITY BRICK	STONINGTON GRAY VELOUR
CAST STONE BANDS & SILLS	EDWARDS CAST STONE	MATCH PRAIRE STONE GRIS
COMPOSITE WINDOWS	ANDERSEN 100	BLACK
ALUM. STOREFRONT	N/A	BLACK
CANOPY & BAY SOFFITS	JAMES HARDIE	COLOR TO MATCH ADJ. TRIM/SIDING
RAILINGS & HANDRAILS	SUPERIOR	BLACK
TREATED-EXPOSED DECK BEAMS	N/A	BROWN TREATED



1 COLORED ELEVATION - SOUTH
A-2.4 1/8" = 1'-0"



2 COLORED ELEVATION - WEST
A-2.4 1/8" = 1'-0"

KEY PLAN

ISSUED
Issued for LUA & UDC Submittal - Jan. 10, 2022
Issued for UDC Resubmittal - Feb. 22, 2022

PROJECT TITLE
**SMOKY'S CLUB
REDEVELOPMENT**

3005 University Ave
Madison, Wisconsin
SHEET TITLE
**ELEVATIONS
COLORED**

SHEET NUMBER

A-2.4
PROJECT NUMBER 1838