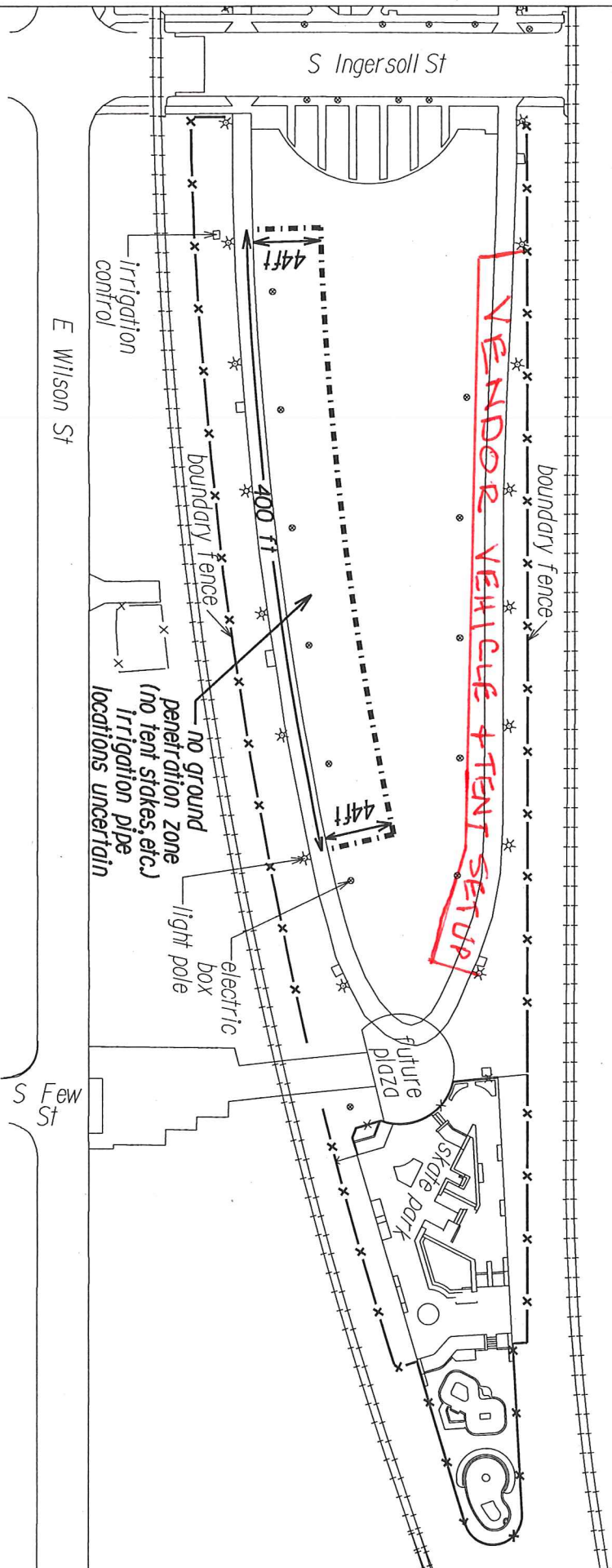


EASTSIDE FARMERS' MARKET
TUESDAYS - APRIL 19 - OCTOBER 11, 2016



CAUTION: This park has many underground utilities owned by different entities. Before any ground penetration, including tent stakes, contact Diggers Hotline (phone 811 / www.diggershotline.com) and the Parks Division (266-4711) so that utilities are marked, and stay at least 18 inches away from marks. Thank you!

CENTRAL PARK EVENT MAP 2015
GREAT LAWN & SKATE PARK
201 S INGERSOLL ST (NE SIDE INGERSOLL)

City of Madison
 Dept. of Public Works - Parks Div.
 City-County Building, Suite 104
 210 Martin Luther King Jr. Blvd.
 PO Box 2987
 Madison, WI 53701-2987

Graphical Scale
 0 100 ft

play
MADISON
PARKS