




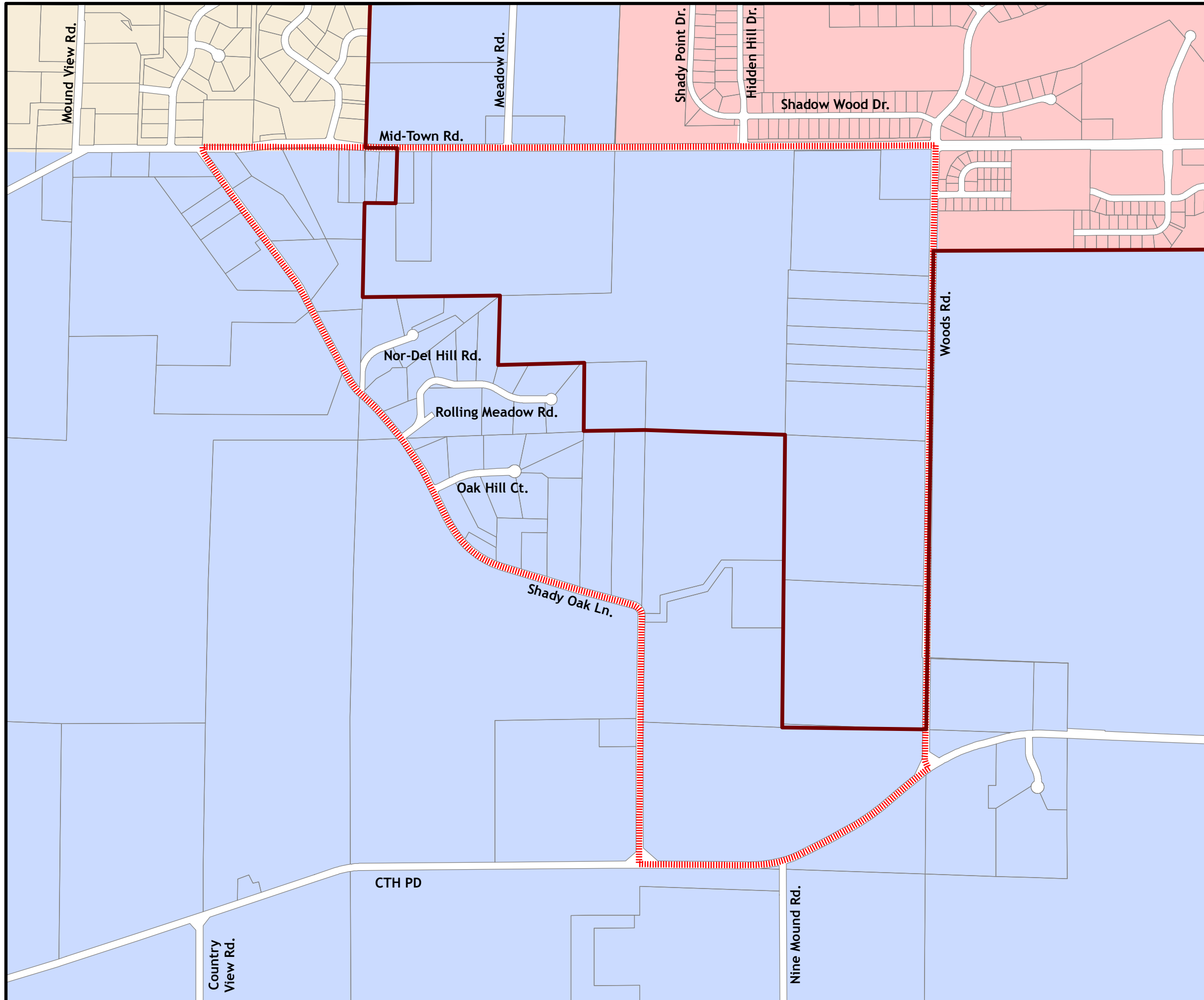


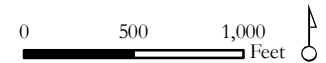
Appendix Map 1: School Districts

Shady Wood
Neighborhood Development Plan
March 2009

-  Planning Area
-  Madison Metropolitan School District
-  Middleton - Cross Plains School District
-  Verona Area School District
-  Future MMSD School District Boundary
(Per Boundary Agreements)

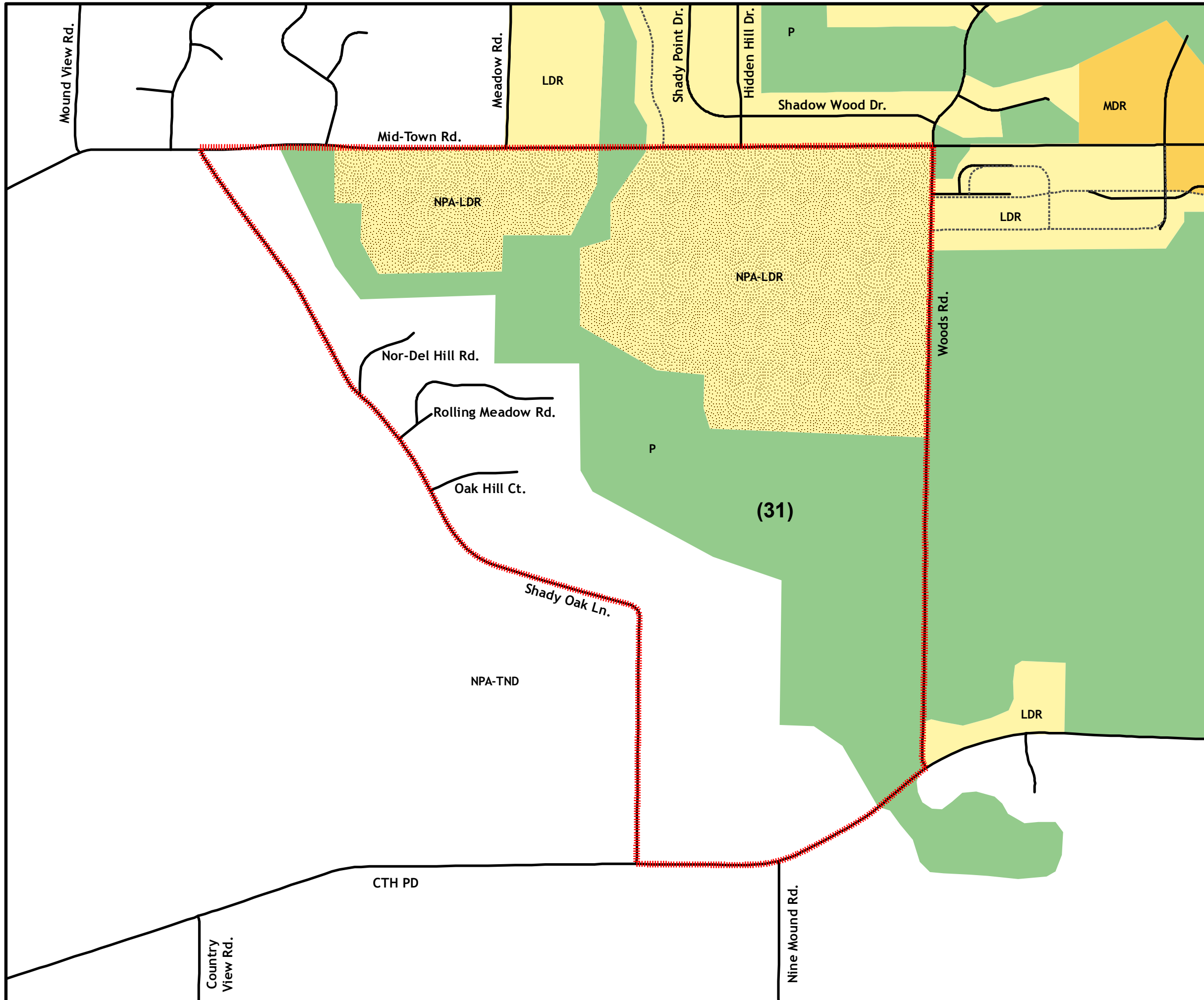


DRAFT



Appendix Map 2: Madison Comprehensive Plan Generalized Future Land Use

Shady Wood
Neighborhood Development Plan
March 2009



Planning Area

Residential Districts

LDR Low Density (0 - 15 units/acre)

MDR Medium Density (16 - 40 units/acre)

Open Space - Agricultural Districts

P Park and Open Space

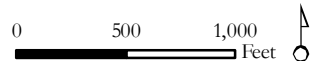
Special Overlay Designations

NPA Neighborhood Planning Area
(Traditional Neighborhood Development Encouraged)

Land Use Note

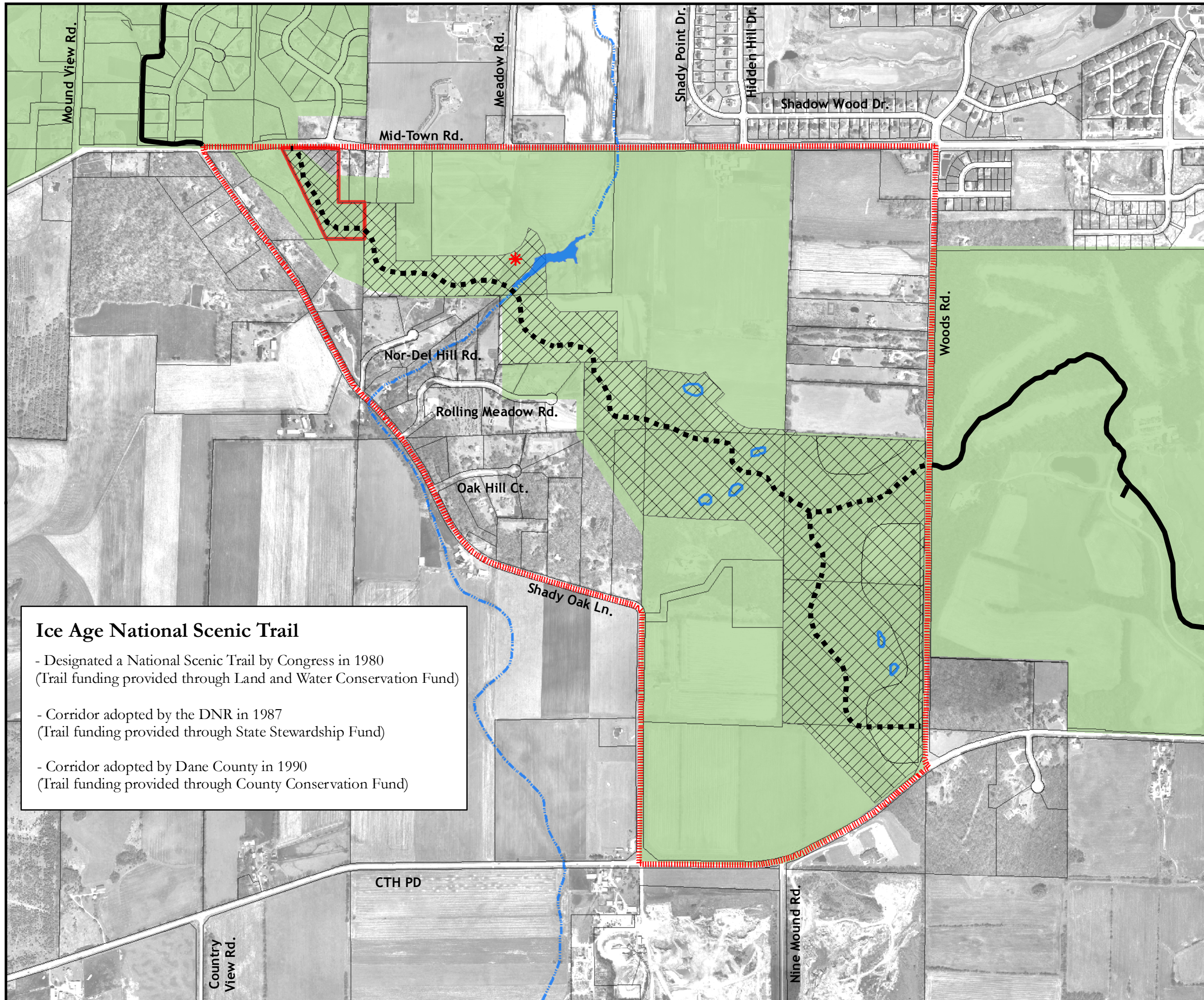
(31) There are significant natural glacial features along this corridor which should be preserved and incorporated into a future extension of the Ice Age National Scenic Trail connecting the planned trail segment with the University Ridge Golf Course with trail segments extending north along the terminal moraine. City plans for future development of adjacent lands should include plans for permanent preservation and trail development within this recommended open space corridor.

DRAFT



Appendix Map 3: Ice Age National Scenic Trail

Shady Wood
Neighborhood Development Plan
March 2009



-  Planning Area
-  Ice Age National Scenic Trail Corridor
-  Shady Wood NDP Recommended Open Space for Ice Age Trail
-  Existing Ice Age Trail
-  Conceptual Ice Age Trail
-  Ice Age Park & Trail Foundation Owned Lands
-  Undrained Kettle or Depression
-  Lower Badger Mill Creek
-  Richardson's Cave

Ice Age National Scenic Trail

- Designated a National Scenic Trail by Congress in 1980
(Trail funding provided through Land and Water Conservation Fund)
- Corridor adopted by the DNR in 1987
(Trail funding provided through State Stewardship Fund)
- Corridor adopted by Dane County in 1990
(Trail funding provided through County Conservation Fund)

DRAFT

