

# HA LONG BAY RESTAURANT

## STRUCTURAL REPAIRS

1353 Williamson Street  
Madison, WI 53703

ARCHITECTURAL  
REVIEW SET  
NOT FOR CONSTRUCTION

### GENERAL NOTES

**CODE:**

THE INTERNATIONAL EXISTING BUILDING CODE, 2015  
THE INTERNATIONAL BUILDING CODE, 2015

**LOAD REQUIREMENTS**

LIVE 20 PSF  
GROUND SNOW (Pg) 30 PSF

**MATERIAL STRENGTH REQUIREMENTS:**

ANCHOR BOLTS: ASTM A36  
STRUCTURAL BOLTS: ASTM A325  
REBAR: ASTM A615-60  
SELF TAPPING SCREWS: ASTM C1513  
WELD: E70XX

NET AREA COMPRESSIVE STENGTH  $f_m$ : 1,500 PSI  
MORTAR COMPRESSIVE STRENGTH: 2,000 PSI  
MORTAR TYPE: M OR S  
BRICK COMPRESSIVE STRENGTH: 5,000 TO 10,000 PSI  
CMU COMPRESSIVE STRENGTH: 4,000 TO 6,000 PSI  
CMU FACE SHELL AND WEB THICKNESS: ASTM C90  
GROUT (CORE FILL): ASTM C476  
GROUT (NON-FEROUS, NON-SHRINK): 4,000 PSI @ 24 HRS  
CORROSION PROTECTION FOR WIRE TIES: ASTM A153, CLASS B-2 OR ASTM A884, CLASS A, TYPE 1-7 MILS

**GENERAL:**

- IN NO CASE SHALL STRUCTURAL ALTERATIONS OR WORK AFFECTING A STRUCTURAL MEMBER BE MADE, UNLESS APPROVED.
- ALL CONSTRUCTION AND ERECTION TO CONFORM TO OSHA, WALSH-HEALY ACT, AND LOCAL, STATE, AND FEDERAL CODES PERTAINING TO ANY WORK OR MATERIAL FURNISHED UNDER THE CONTRACT. CONTRACTOR SHALL FURNISH AND INSTALL DEPT. OF INDUSTRY, LABOR, AND HUMAN RELATIONS APPROVED TYPE BARRIER AT ALL ROOF EDGES. ALL CONSTRUCTION SHALL CONFORM TO OSHA'S FALL PROTECTION REGULATIONS.
- PROVIDE TEMPORARY BRACING AS REQ'D BY OSHA AND THE AISC "CODE OF STANDARD PRACTICE"
- FIELD VERIFY ALL DIMENSIONS AND EXISTING CONDITIONS AND NOTIFY ENGINEER OF ANY DISCREPANCIES BEFORE STARTING WITH ANY WORK.
- PROVIDE FIRE EXTINGUISHERS PER STATE AND LOCAL CODES & ORDINANCES.
- CONTRACTOR RESPONSIBLE FOR ALL PLAN REVIEW AND PERMIT FEES.
- CONTRACTOR RESPONSIBLE TO LOCATE AND PROTECT OR TEMPORARILY MOVE ALL EXISTING UTILITIES
- THESE PLANS AND DETAILS WERE DEVELOPED BASED ON NON DESTRUCTIVE VISUAL INSPECTION ONLY. ALL EXISTING CONDITIONS AND MATERIALS WILL NEED TO BE VERIFIED DURING CONSTRUCTION.

**CMU WALL CONSTRUCTION:**

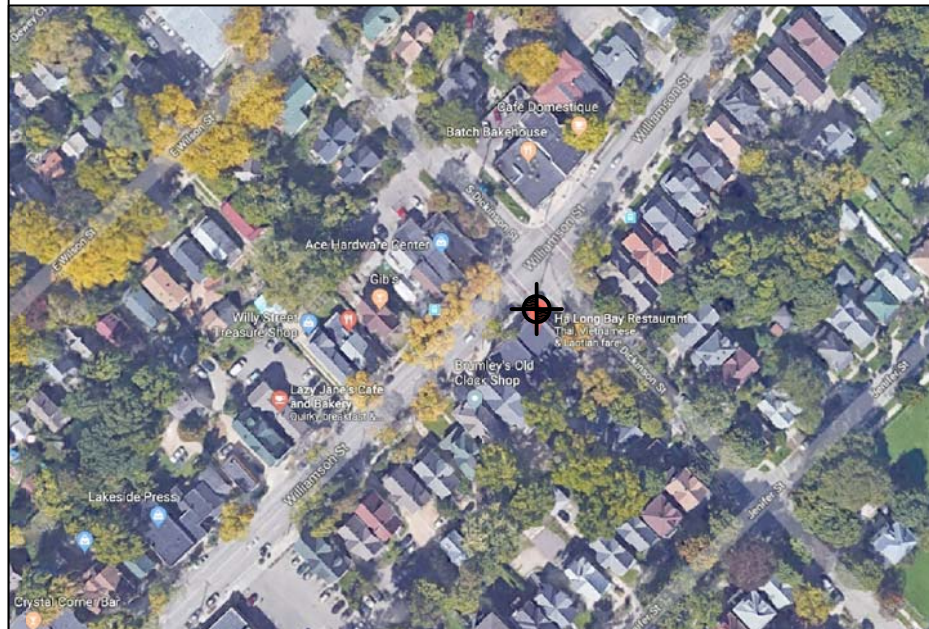
- REINFORCING STEEL SHALL BE NEW BILLET STEEL DEFORMED BARS, ASTM A615-60, FREE FROM DIRT, OIL, GREASE, RUST, AND SCALE. ALL REINFORCING STEEL SHALL BE PLACED ON PREFABRICATED METAL CHAIRS OF PROPER HEIGHT. PRE-FAB CHAIRS AND REINFORCING STEEL SHALL BE PLACED IN ACCORDANCE WITH THE LATEST ACI SPECIFICATIONS.
- CMU WALL CONSTRUCTION TO BE INSTALLED IN RUNNING BOND.
- ALL MASONRY CONSTRUCTION TO IN ACCORDANCE THE LATEST ADDITION OF ACI 530.1 / ASCE 6 / TMS 602, "SPECIFICATIONS FOR MASONRY STRUCTURES".

### PROJECT LOCATION

### DRAWING INDEX

REV.

SHT	DESCRIPTION			
T1	TITLE SHEET		△	
A1	REPAIR FLOOR PLAN			
A2	NORTHWEST REPAIR ELEVATION		△	
A3	NORTHEAST REPAIR ELEVATION & ORIGINALS		△	
A4	SECTIONS		△	
A5	SECTIONS		△	
A6	COLUMN DETAILS			
A7	LINTEL BEAM DETAILS		△	
A8	DETAILS		△	
A9	DETAILS		△	



### PROJECT INFO

### SCOPE OF WORK

**REPLACE & REPAIR WALLS & COLUMNS IN LOCATIONS INDICATED ON PLANS.**

- RECORD BRICK PROFILE AND CORBELING.
- REMOVE EXISTING WALLS AND DISLODGED FINISHES AS INDICATED ON PLANS.
- PROTECT AND STORE SIGNAGE AND LIMESTONE FOR REINSTALLATION.
- VERIFY EXISTING REMAINING BUILDING CONDITIONS.
- CONSTRUCT NEW REINFORCED MASONRY COLUMNS AS DETAILED ON PLANS
- CONSTRUCT NEW REINFORCED MASONRY LINTEL BEAMS AS DETAILED ON PLANS
- CONSTRUCT NEW CAVITY BRICK MASONRY WALL WITH CMU STRUCTURAL BACK UP WALL AS DETAILED ON PLANS.
- PROFILE AND APPEARANCE OF ALL BRICK MASONRY TO MATCH EXISTING.
- REINSTALL ALL SIGNAGE AND LIMESTONE PIECES SALVAGED FROM DEMOLITION WITH ANCHORS AS DETAILED ON PLANS.
- INSTALL NEW WALL FLASHING TIED INTO EXISTING ROOF SYSTEM AS REQUIRED AND DETAILED ON PLANS.

PROJECT LOCATION:  
HA LONG BAY RESTAURANT  
1353 Williamson Street  
Madison, WI 53703

PLANS PREPARED FOR:  
Giertsen Company of Wisconsin Inc.  
W223 N798 Saratoga Dr.  
Suite C  
Waukesha, WI 53186-0412

**Waukesha, WI** 53186-0412  
**Minneapolis, MN** 55425-4000  
**Skokie, IL** 60077-4000  
**Chesterfield, MO** 63030-3663  
**Indianapolis, IN** 46204-4440

**RCL Engineering Group**  
 Forensic & Structural Engineering  
 - A Business Unit of Roofing Consultants Ltd. -

TITLE SHEET  
 HA LONG BAY RESTAURANT  
 1353 Williamson St.  
 Madison, WI 53703

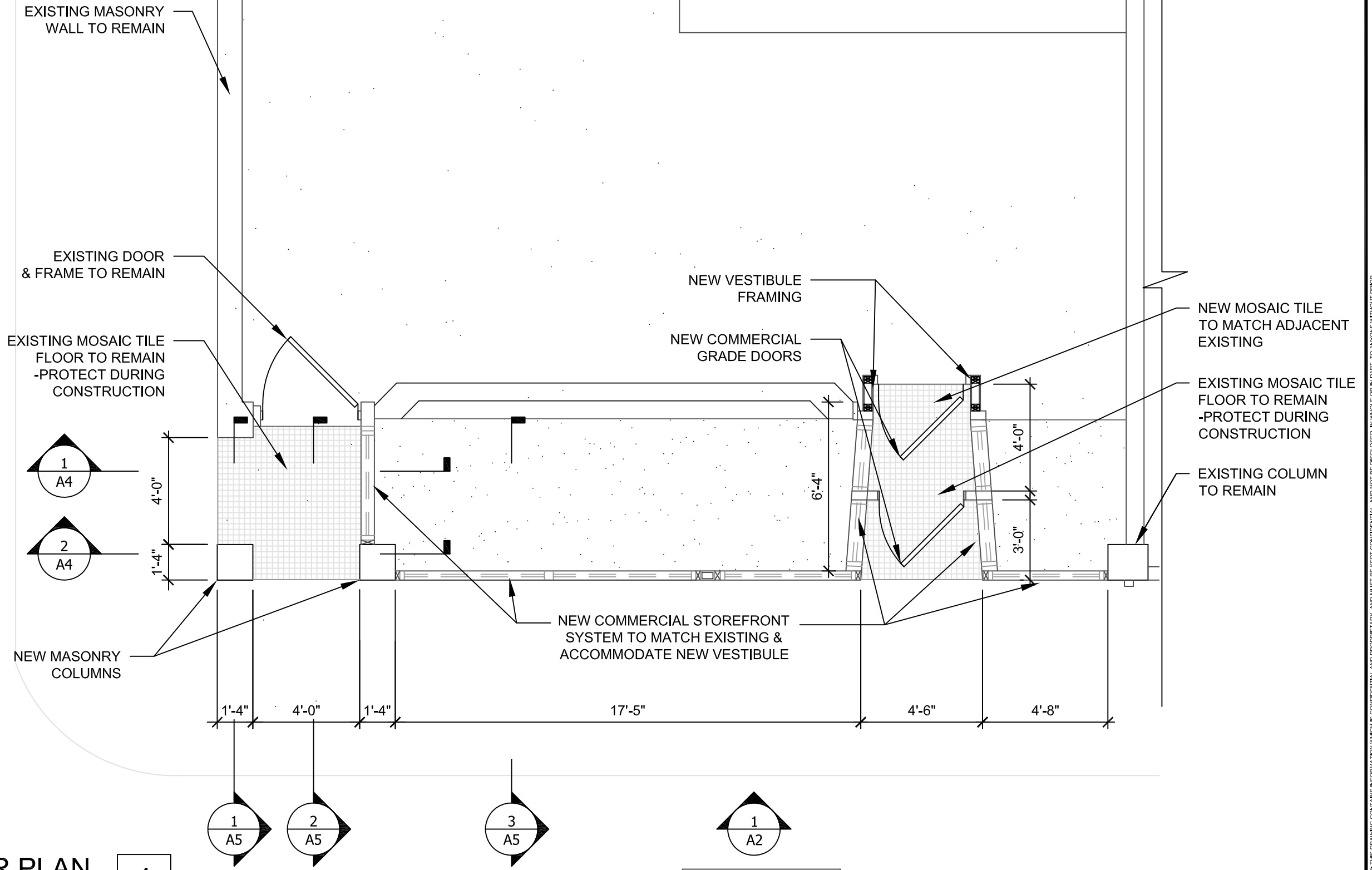
NO.	DATE	BY	DESCRIP.

DRAWN: EV  
 DATE: 5/15/18  
 SHEET: T1

DISCLAIMER: THIS DRAWING CONTAINS INFORMATION WHICH IS CONFIDENTIAL AND PROPRIETARY AND MUST BE KEPT CONFIDENTIAL AND NOT BE DISCLOSED, IN WHOLE OR IN PART, TO ANYONE WITHOUT PRIOR WRITTEN PERMISSION OF RCL ENGINEERING GROUP. BY ACCESSING THIS DOCUMENT YOU AGREE TO KEEP CONFIDENTIAL ALL THE INFORMATION DISCLOSED IN THE FILE AND RELATED MATERIALS.

ARCHITECTURAL  
REVIEW SET  
NOT FOR CONSTRUCTION

S Dickinson Street



NORTH

REPAIR FLOOR PLAN

SCALE: 1/4"=1'-0"

1

Williamson Street

DISCLAIMER: THIS DRAWING CONTAINS INFORMATION WHICH IS CONFIDENTIAL AND PROPRIETARY AND MUST BE KEPT CONFIDENTIAL AND NOT BE DISCLOSED IN WHOLE OR IN PART TO ANYONE WITHOUT PRIOR WRITTEN AUTHORIZATION OF RCL ENGINEERING GROUP. BY ACCESSING THIS DOCUMENT, YOU AGREE TO KEEP CONFIDENTIAL ALL THE INFORMATION DISCLOSED IN THIS FILE AND RELATED MATERIALS.

Waukesha, WI    Minneapolis, MN  
262-549-0802    612-238-0802

Skokie, IL    Chesterfield, MO  
847-965-3366    636-530-3663

Indianapolis, IN  
317-584-5440

**RCL**  
Engineering Group  
Forensic & Structural Engineering  
- A Business Unit of Roofing Consultants Ltd. -

REPAIR FLOOR PLAN  
Ha Long Bay Restaurant  
1353 Williamson St.  
Madison, WI 53703

NO.	REVISION	DATE	DESCRIP.

DRAWN  
EV  
DATE  
5/31/18  
SHEET

A1

ARCHITECTURAL  
REVIEW SET  
NOT FOR CONSTRUCTION

NOTE: -MATCH ALL NEW BRICK AND MORTAR WITH MATCHING SIZE AND COLOR TO EXISTING  
-ALL BRICK FACING PATTERNS TO MATCH ORIGINAL CONSTRUCTION. SEE A3 FOR PHOTOS.  
-REUSE LIMESTONE AS MUCH AS POSSIBLE. IF NECESSARY, REPLACE WITH MATCHING FULL LIMESTONE

NEW CONSTRUCTION  
-REMOVE & REPLACE ALL  
LOOSE & BROKEN BRICK.  
-TIE BRICK WITH HEADER BRICK  
EVERY 6 COURSES

-REMOVE & REPLACE ALL  
LOOSE & BROKEN BRICK.  
-TIE WITH METAL MASONRY TIES  
INTO BACKUP BRICK WALL

EXISTING OVERHANG TO REMAIN

REMOVE SIGN & SAVE  
FOR REINSTALLATION

EXISTING SPANISH  
TILE TO REMAIN

EXISTING TRANSOMS  
TO REMAIN

EXISTING WALL TO REMAIN

REPLACE METAL CLAD  
STORE FRONT SYSTEM  
TO MATCH EXISTING

-REPLACE ALL DAMAGE TILES  
TO MATCH EXISTING  
-RESET DISLODGED TILE IN MASONRY  
-REBUILD SUPPORT FRAMING  
& BLOCKING AS REQUIRED

-REPLACE ALL DAMAGE TILES  
TO MATCH EXISTING  
-RESET DISLODGED TILE IN MORTAR

Williamson Street

NORTHWEST REPAIR ELEVATION  
SCALE: 1/4" = 1'-0"

1  
A2

DISCLAIMER: THIS DRAWING CONTAINS INFORMATION WHICH IS CONFIDENTIAL AND PROPRIETARY AND MUST BE KEPT CONFIDENTIAL AND NOT BE DISCLOSED, IN WHOLE OR IN PART, TO ANYONE WITHOUT PRIOR WRITTEN PERMISSION OF RCL ENGINEERING GROUP. BY ACCESSING THIS DOCUMENT, YOU AGREE TO KEEP CONFIDENTIAL ALL THE INFORMATION DISCLOSED IN THIS FILE AND RELATED MATERIALS.

Waukesha, WI  
262-549-0802

Skokie, IL  
847-965-3366

Indianapolis, IN  
317-584-5440

Minneapolis, MN  
612-238-0802

Chesterfield, MO  
636-530-3663

**RCL**  
Engineering Group  
Forensic & Structural Engineering  
~ A Business Unit of Roofing Consultants Ltd. ~



NW REPAIR ELEVATION  
Ha Long Bay Restaurant  
1353 Williamson St.  
Madison, WI 53703

REVISION	DATE	DESCRIP.
EV	06/21/18	ARCH. REV.
LTR		

DRAWN  
EV  
DATE  
5/31/18  
SHEET

**A2**

**ARCHITECTURAL  
REVIEW SET  
NOT FOR CONSTRUCTION**

NOTE: -MATCH ALL NEW BRICK AND MORTAR WITH MATCHING SIZE AND COLOR TO EXISTING  
-ALL BRICK FACING PATTERNS TO MATCH ORIGINAL CONSTRUCTION. SEE A3 FOR PHOTOS.  
-REUSE LIMESTONE AS MUCH AS POSSIBLE. IF NECESSARY, REPLACE WITH MATCHING FULL LIMESTONE

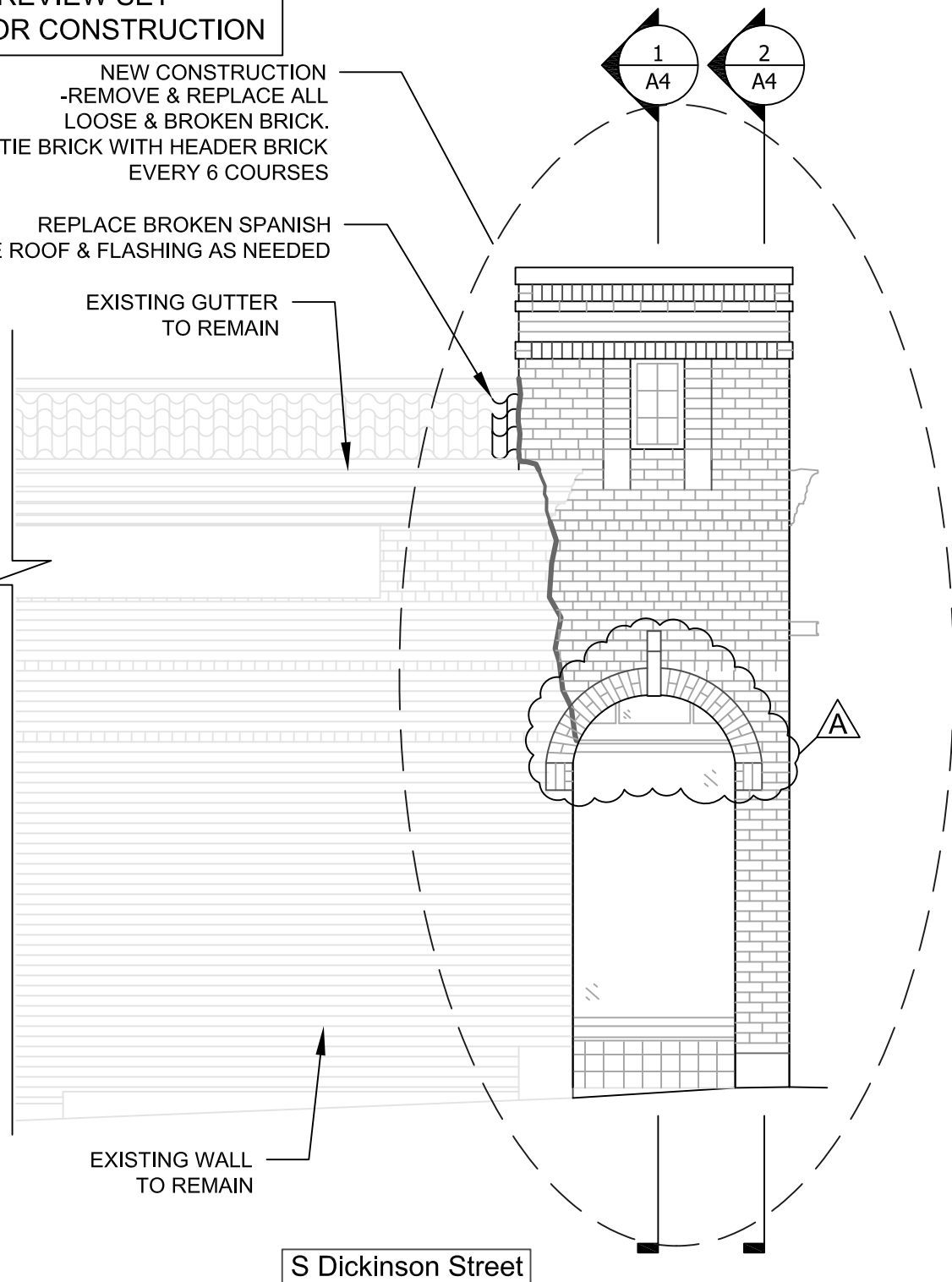
NEW CONSTRUCTION  
-REMOVE & REPLACE ALL  
LOOSE & BROKEN BRICK.  
-TIE BRICK WITH HEADER BRICK  
EVERY 6 COURSES

REPLACE BROKEN SPANISH  
TILE ROOF & FLASHING AS NEEDED

EXISTING GUTTER  
TO REMAIN

EXISTING WALL  
TO REMAIN

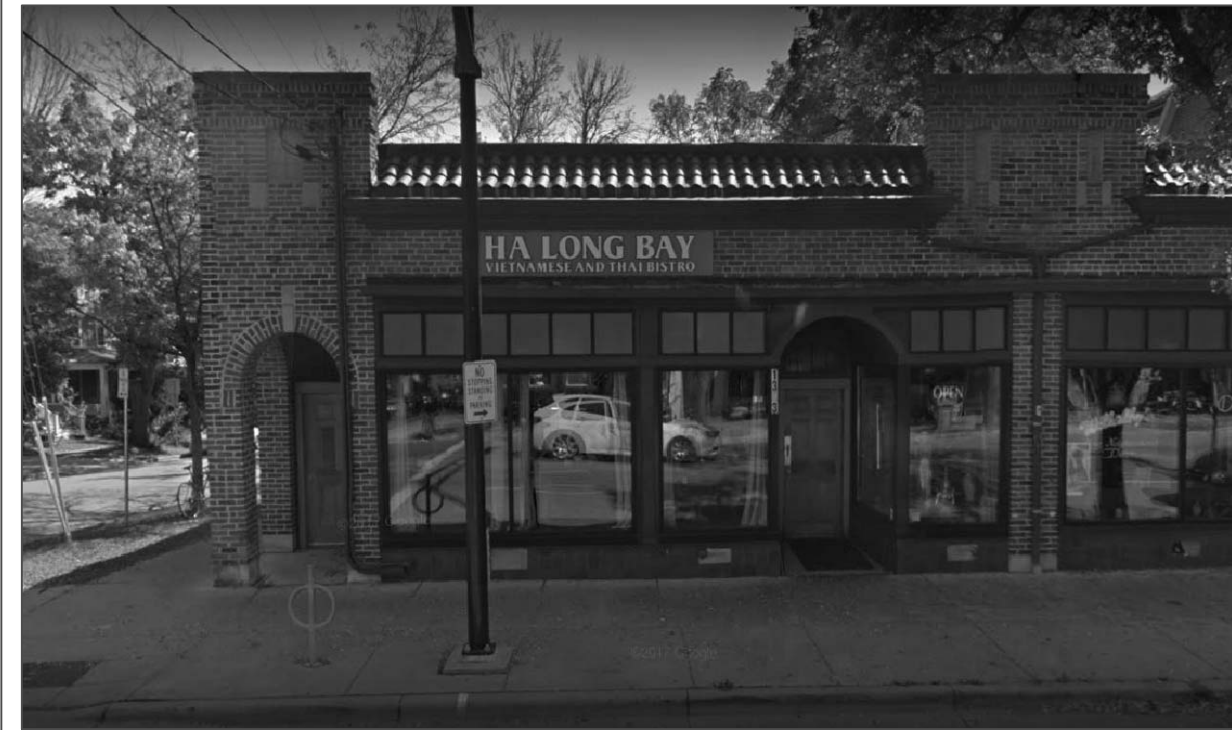
S Dickinson Street



**NORTHEAST ELEVATION**

SCALE: 1/4" = 1'-0"

1  
A3

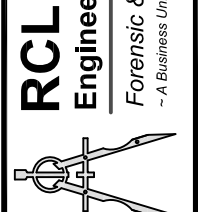


NORTHWEST ORIGINAL ELEVATION PHOTO



NORTHEAST ORIGINAL ELEVATION PHOTO

DISCLAIMER: THIS DRAWING CONTAINS INFORMATION WHICH IS CONFIDENTIAL AND PROPRIETARY AND MUST BE KEPT CONFIDENTIAL AND NOT BE DISCLOSED, IN WHOLE OR IN PART, TO ANYONE WITHOUT PRIOR WRITTEN PERMISSION OF RCL ENGINEERING GROUP. BY ACCESSING THIS DOCUMENT, YOU AGREE TO KEEP CONFIDENTIAL ALL THE INFORMATION DISCLOSED IN THE FILE AND RELATED MATERIALS.



**RCL  
Engineering Group**  
Forensic & Structural Engineering  
- A Business Unit of Roofing Consultants Ltd. -

Waukesha, WI  
262-549-0802  
Minneapolis, MN  
612-238-0802  
Skokie, IL  
847-965-3366  
Chesterfield, MO  
636-530-3663  
Indianapolis, IN  
317-584-5440

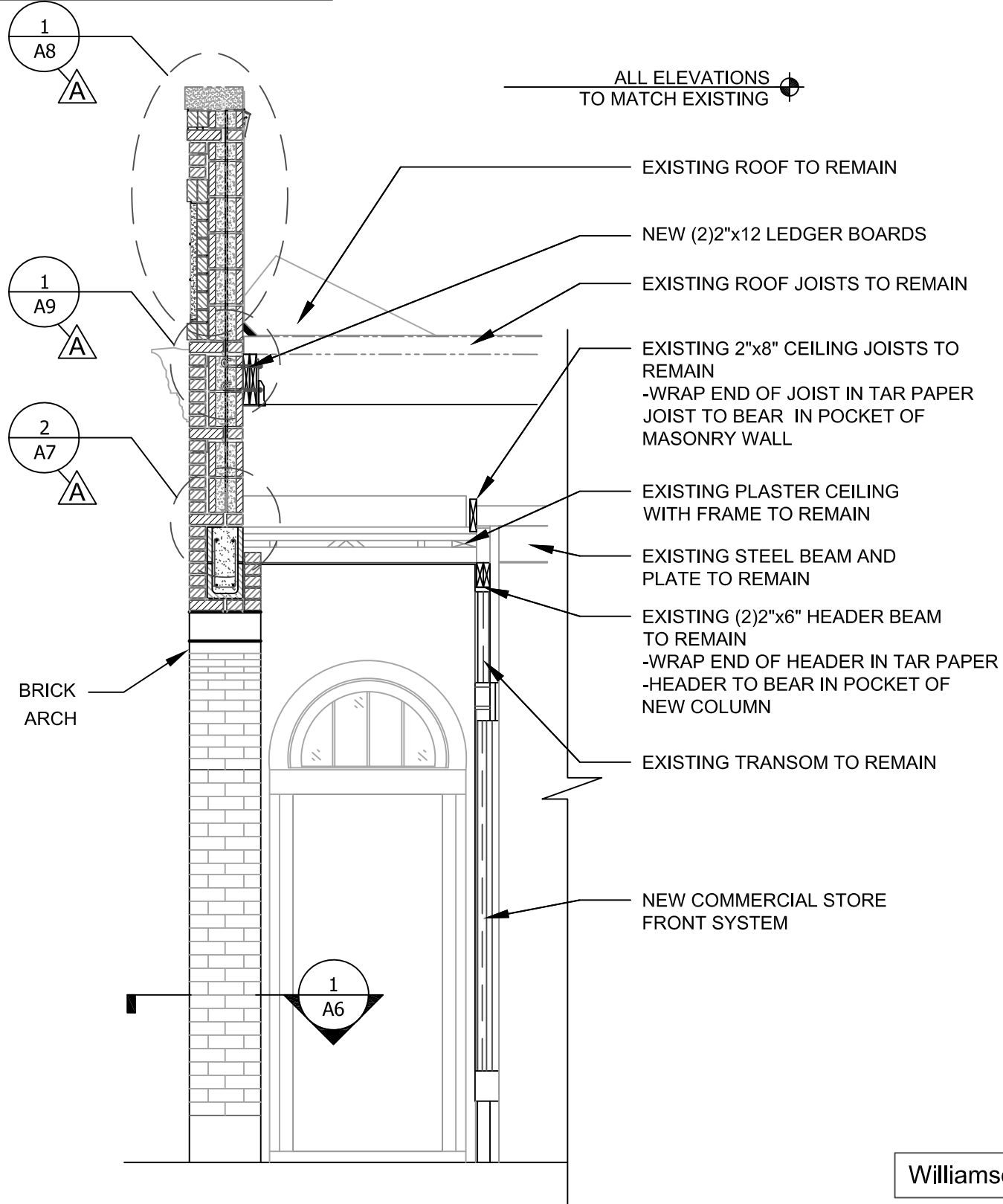
**SE REPAIR ELEVATION**  
Ha Long Bay Restaurant  
1353 Williamson St.  
Madison, WI 53703

REVISION	DATE	DESCRIP.
EV	06/21/18	ARCH. REV.
LTR	BY	

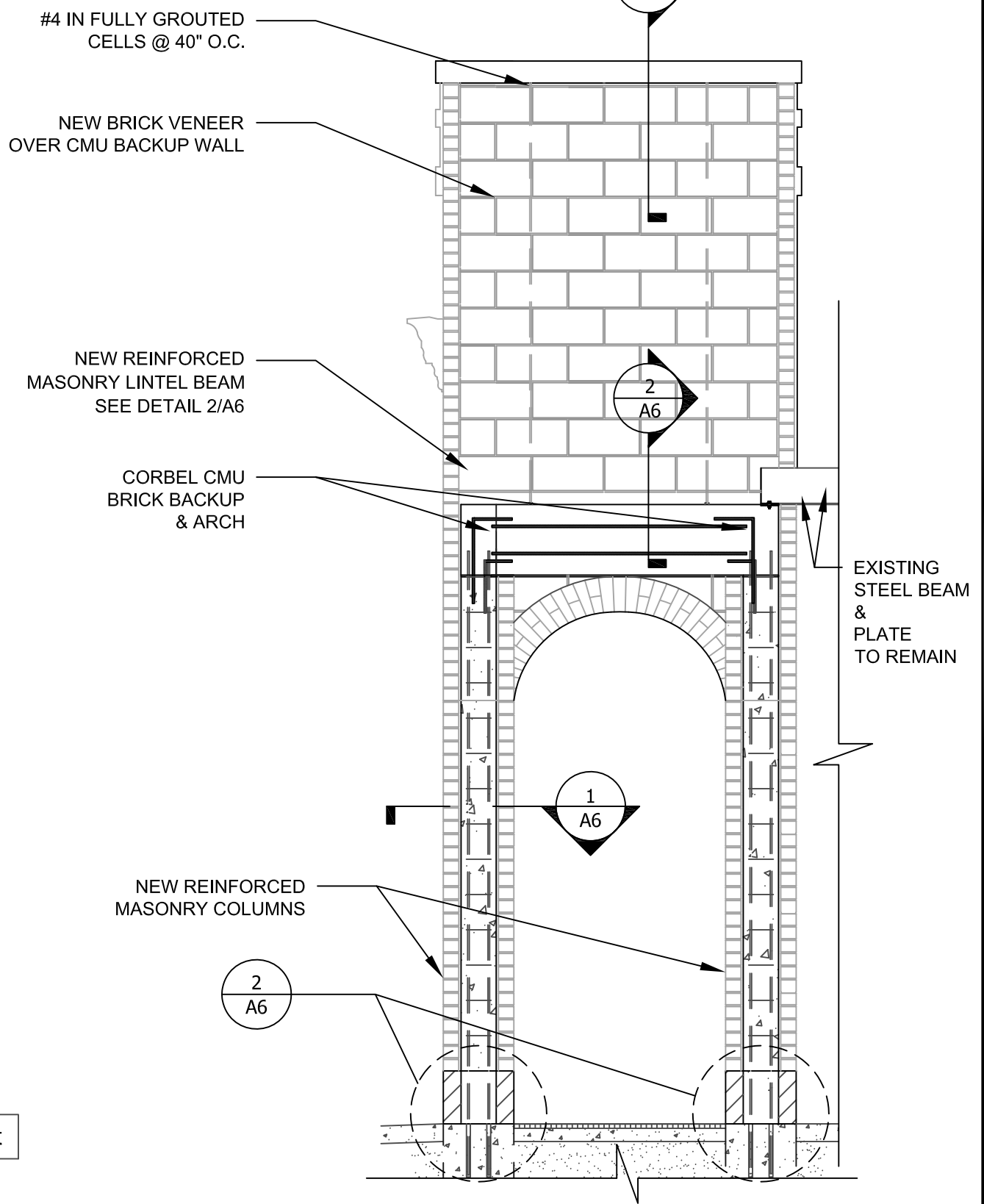
DRAWN  
EV  
DATE  
5/31/18  
SHEET

**A3**

ARCHITECTURAL  
REVIEW SET  
NOT FOR CONSTRUCTION



SECTION 1  
SCALE: 3/8" = 1'-0"  
A4



SECTION 2  
SCALE: 3/8" = 1'-0"  
A4

DISCLAIMER: THIS DRAWING CONTAINS INFORMATION WHICH IS CONFIDENTIAL AND PROPRIETARY AND MUST BE KEPT CONFIDENTIAL AND NOT BE DISCLOSED, IN WHOLE OR IN PART, TO ANYONE WITHOUT PRIOR WRITTEN PERMISSION OF RCL ENGINEERING GROUP. BY ACCESSING THIS DOCUMENT YOU AGREE TO KEEP CONFIDENTIAL ALL THE INFORMATION DISCLOSED IN THIS FILE AND RELATED MATERIALS.

Waukesha, WI  
262-549-0802  
Minneapolis, MN  
612-238-0802  
Skokie, IL  
847-965-3366  
Chesterfield, MO  
636-530-3663  
Indianapolis, IN  
317-584-5440

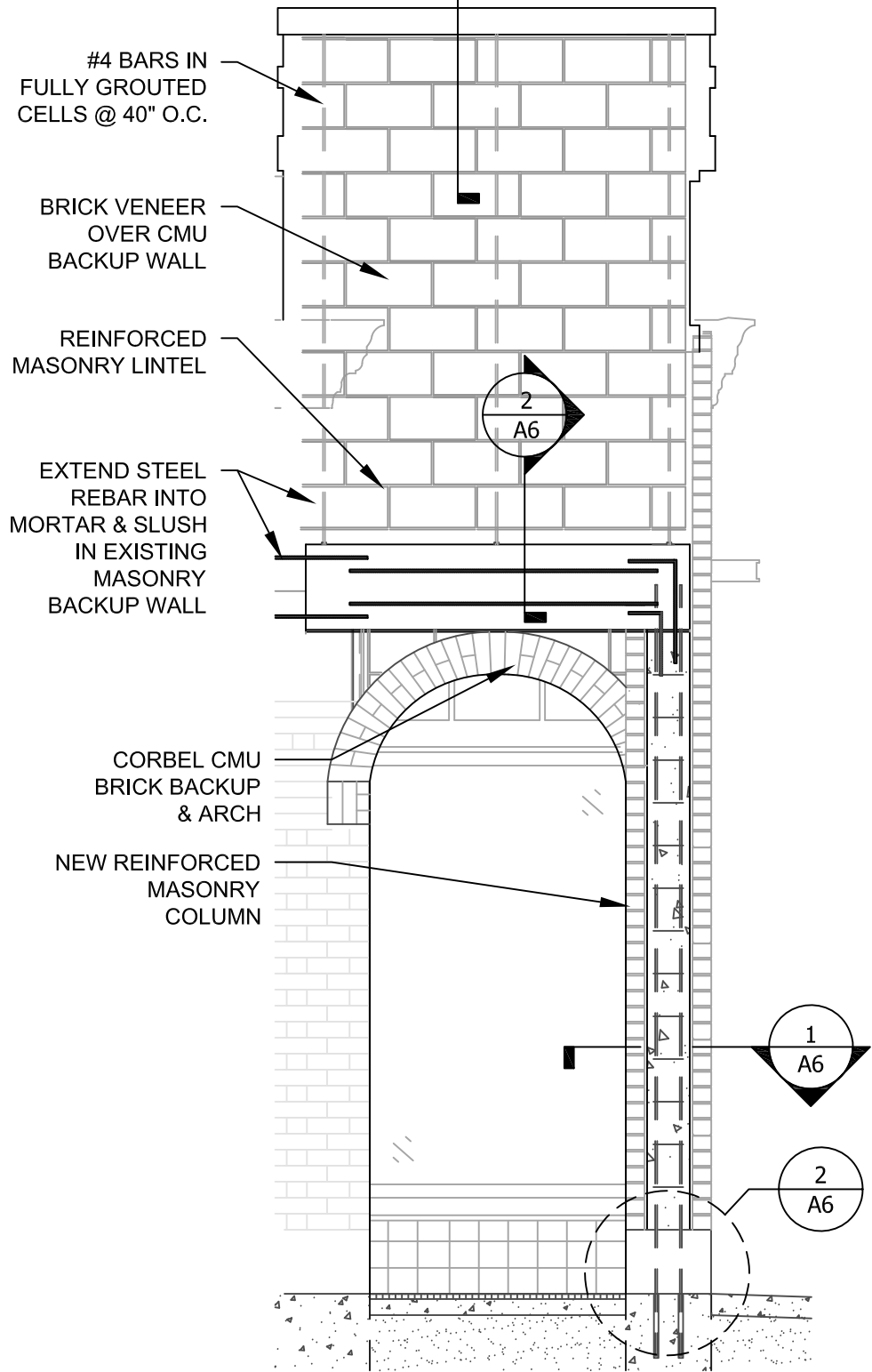
**RCL**  
Engineering Group  
Forensic & Structural Engineering  
- A Business Unit of Roofing Consultants Ltd. -

SECTIONS  
Ha Long Bay Restaurant  
1353 Williamson St.  
Madison, WI 53703

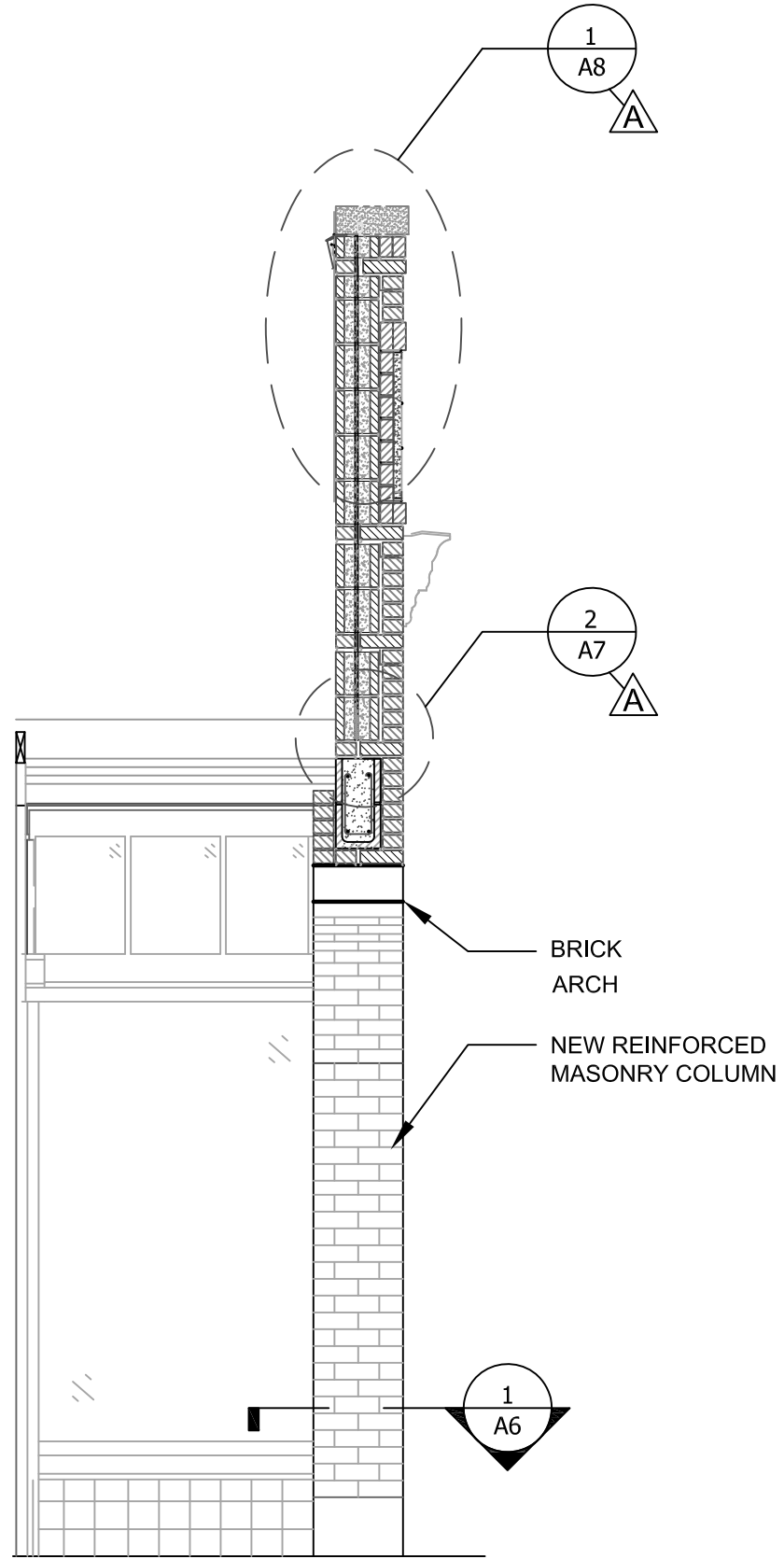
REVISION	LTR	BY	DATE	DESCRIP.

DRAWN  
EV  
DATE  
5/31/18  
SHEET  
**A4**

ARCHITECTURAL  
REVIEW SET  
NOT FOR CONSTRUCTION

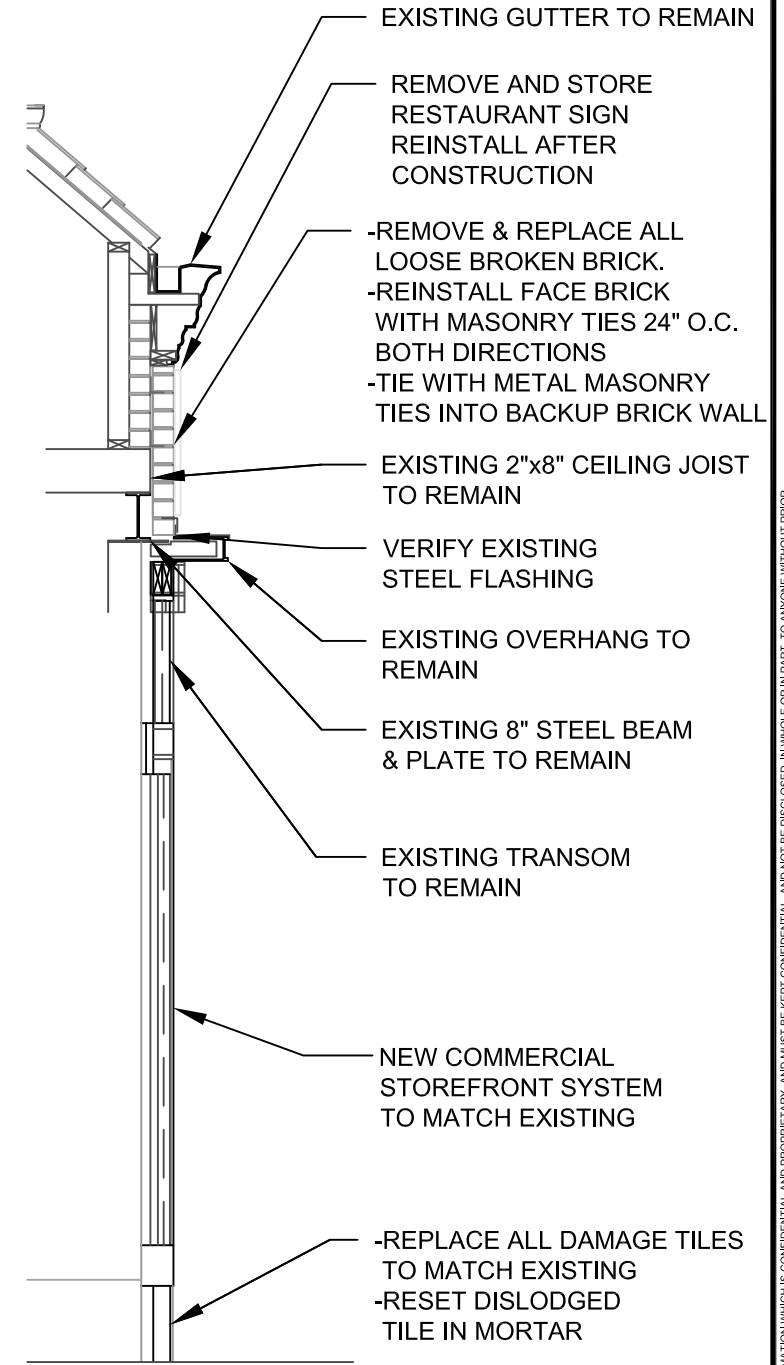


SECTION 1  
SCALE: 3/8" = 1'-0" A5



S Dickinson Street

SECTION 2  
SCALE: 3/8" = 1'-0" A5



SECTION 3  
SCALE: 3/8" = 1'-0" A5

DISCLAIMER: THIS DRAWING CONTAINS INFORMATION WHICH IS CONFIDENTIAL AND PROPRIETARY AND MUST BE KEPT CONFIDENTIAL AND NOT BE DISCLOSED IN WHOLE OR IN PART TO ANYONE WITHOUT PRIOR WRITTEN PERMISSION OF RCL ENGINEERING GROUP. BY ACCESSING THIS DOCUMENT YOU AGREE TO KEEP CONFIDENTIAL ALL THE INFORMATION DISCLOSED IN THE FILE AND RELATED MATERIALS.

Waukesha, WI  
262-549-0802

Minneapolis, MN  
612-238-0802

Skokie, IL  
847-965-3366

Chesterfield, MO  
636-530-3663

Indianapolis, IN  
317-584-5440

**RCL**  
Engineering Group  
Forensic & Structural Engineering  
- A Business Unit of Roofing Consultants Ltd. -

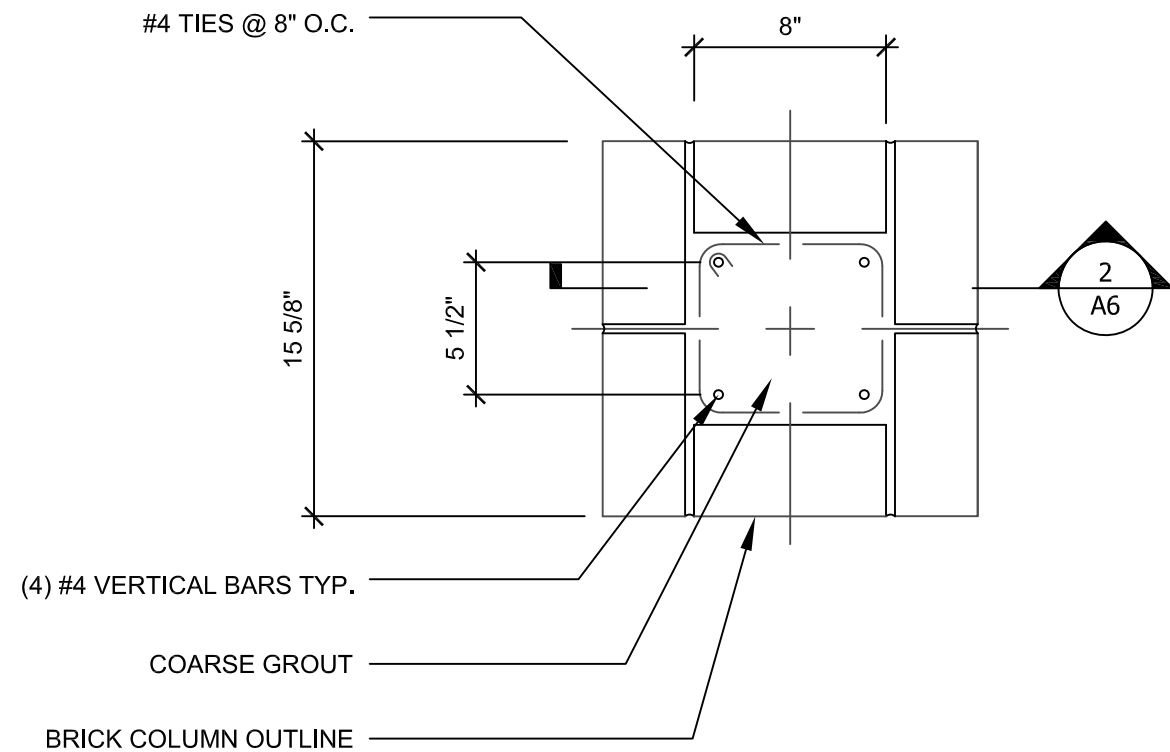
SECTIONS  
Ha Long Bay Restaurant  
1353 Williamson St.  
Madison, WI 53703

REVISION	DATE	DESCRIP.
EV	06/21/18	ARCH. REV.
LTR	BY	

DRAWN  
EV  
DATE  
5/31/18  
SHEET

**A5**

ARCHITECTURAL  
REVIEW SET  
NOT FOR CONSTRUCTION

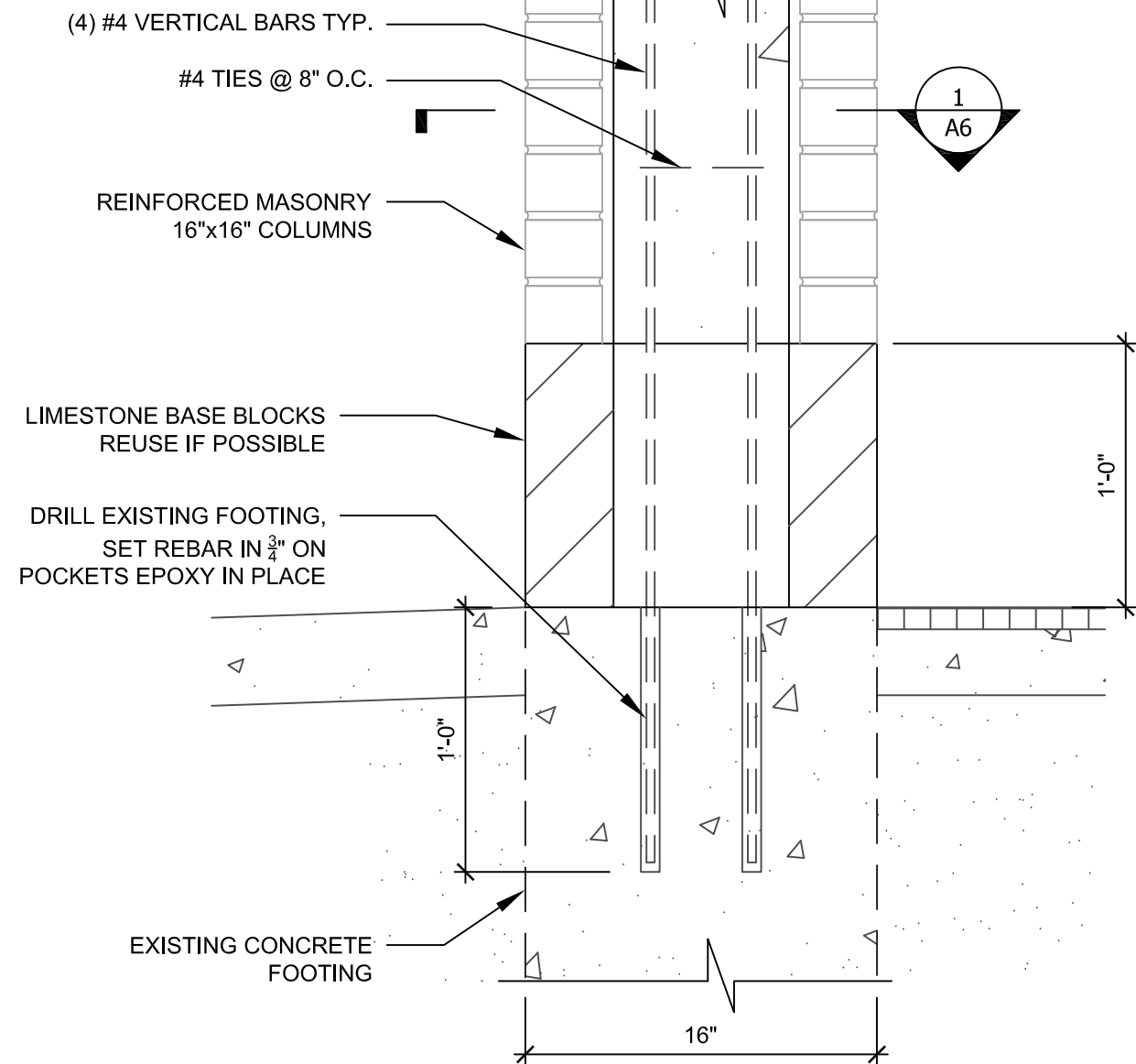


MASONRY COLUMN SCHEDULE					
COLUMN MARK	COLUMN SIZE	REINFORCING			NOTES
		VERTICAL	TIES	CONFIG.	
MC-1	16" x 16"	(4) #4 BARS	#4 @ 8" O.C.		

COLUMN DETAIL

SCALE: 1 1/2"=1'-0"

1

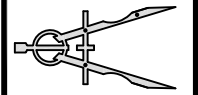


COLUMN BASE DETAIL

SCALE: 1 1/2"=1'-0"

2

DISCLAIMER: THIS DRAWING CONTAINS INFORMATION WHICH IS CONFIDENTIAL AND PROPRIETARY AND MUST BE KEPT CONFIDENTIAL AND NOT BE DISCLOSED IN WHOLE OR IN PART TO ANYONE WITHOUT PRIOR WRITTEN AUTHORIZATION OF RCL ENGINEERING GROUP. BY ACCESSING THIS DOCUMENT, YOU AGREE TO KEEP CONFIDENTIAL ALL THE INFORMATION DISCLOSED IN THE FILE AND RELATED MATERIALS.



**RCL**  
Engineering Group  
Forensic & Structural Engineering  
- A Business Unit of Roofing Consultants Ltd. -

COLUMN DETAILS  
Ha Long Bay Restaurant  
1353 Williamson St.  
Madison, WI 53703

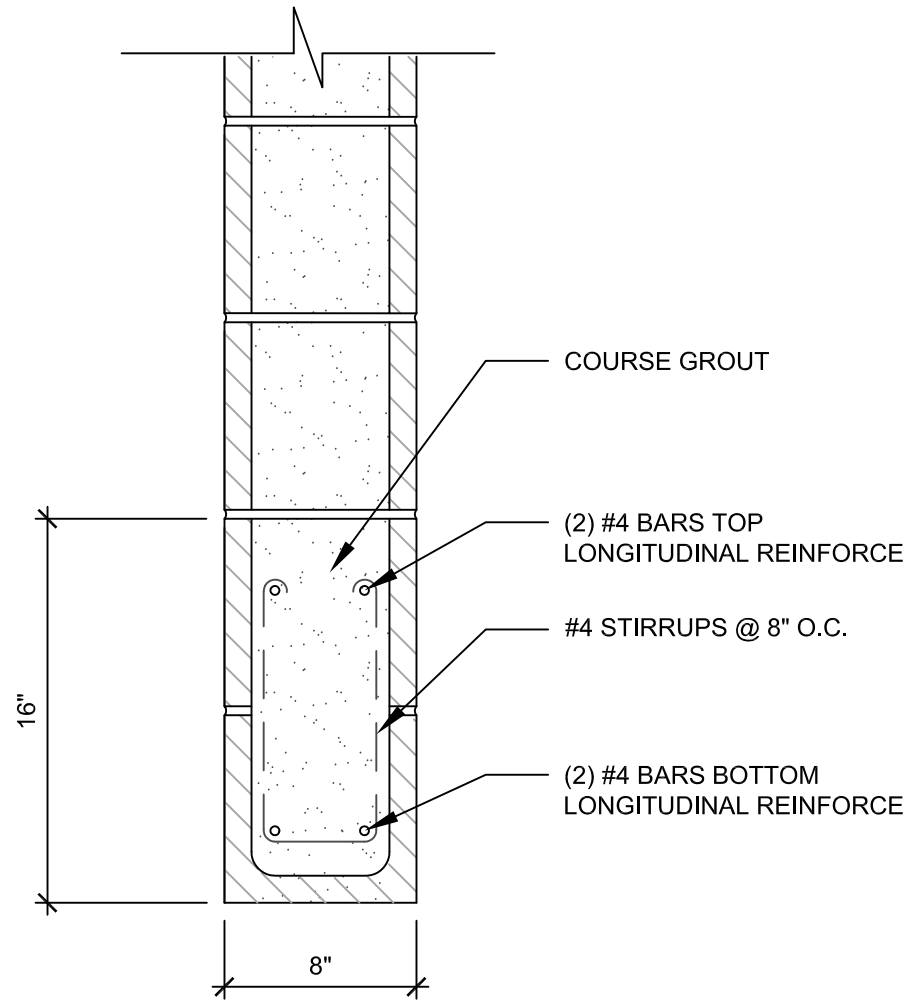
REVISION	LTR	BY	DATE	DESCRIP.

DRAWN  
EV  
DATE  
5/31/18  
SHEET

A6

Waukesha, WI    Minneapolis, MN  
262-549-0802    612-238-0802  
Skokie, IL    Chesterfield, MO  
847-965-3366    636-530-3663  
Indianapolis, IN  
317-584-5440

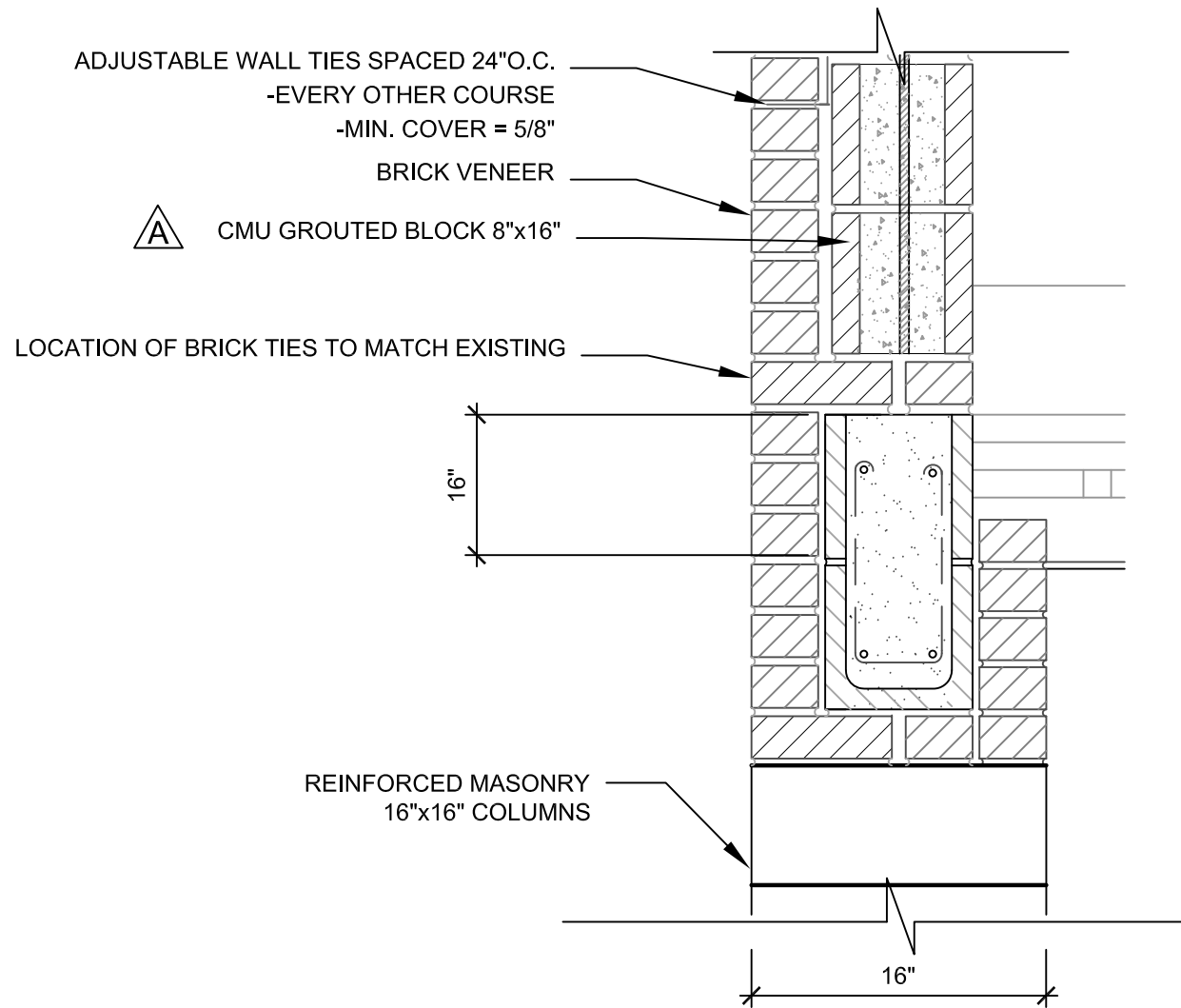
ARCHITECTURAL  
REVIEW SET  
NOT FOR CONSTRUCTION



MASONRY LINTEL SCHEDULE					
LINTEL MARK	LINTEL DEPTH	LINTEL SPAN MAXIMUM	REINFORCING		NOTES
			HORIZONTAL	STIRRUPS	
ML-1	16"	6'-0"	(2)#4 BARS CONT. TOP & BOTTOM	#4 @ 8" O.C.	

LINTEL DETAIL  
SCALE: 1 1/2" = 1'-0"

1  
A7



LINTEL CEILING CONN.  
SCALE: 1 1/2" = 1'-0"

2  
A7

DISCLAIMER: THIS DRAWING CONTAINS INFORMATION WHICH IS CONFIDENTIAL AND PROPRIETARY AND MUST BE KEPT CONFIDENTIAL AND NOT BE DISCLOSED, IN WHOLE OR IN PART, TO ANYONE WITHOUT PRIOR WRITTEN PERMISSION OF RCL ENGINEERING GROUP. BY ACCESSING THIS DOCUMENT, YOU AGREE TO KEEP CONFIDENTIAL ALL THE INFORMATION DISCLOSED IN THE FILE AND RELATED MATERIALS.

**RCL**  
Engineering Group  
Forensic & Structural Engineering  
- A Business Unit of Roofing Consultants Ltd. -

Waukesha, WI 53188-0802  
262-549-0802

Minneapolis, MN 55425-0802  
612-238-0802

Skokie, IL 60077-3366  
847-965-3366

Chesterfield, MO 63050-3663  
636-530-3663

Indianapolis, IN 46204-5440  
317-584-5440

LINTEL BEAM DETAILS

Ha Long Bay Restaurant  
1353 Williamson St.  
Madison, WI 53703

REVISION	DATE	BY	ARCH. REV.	DESCRIP.

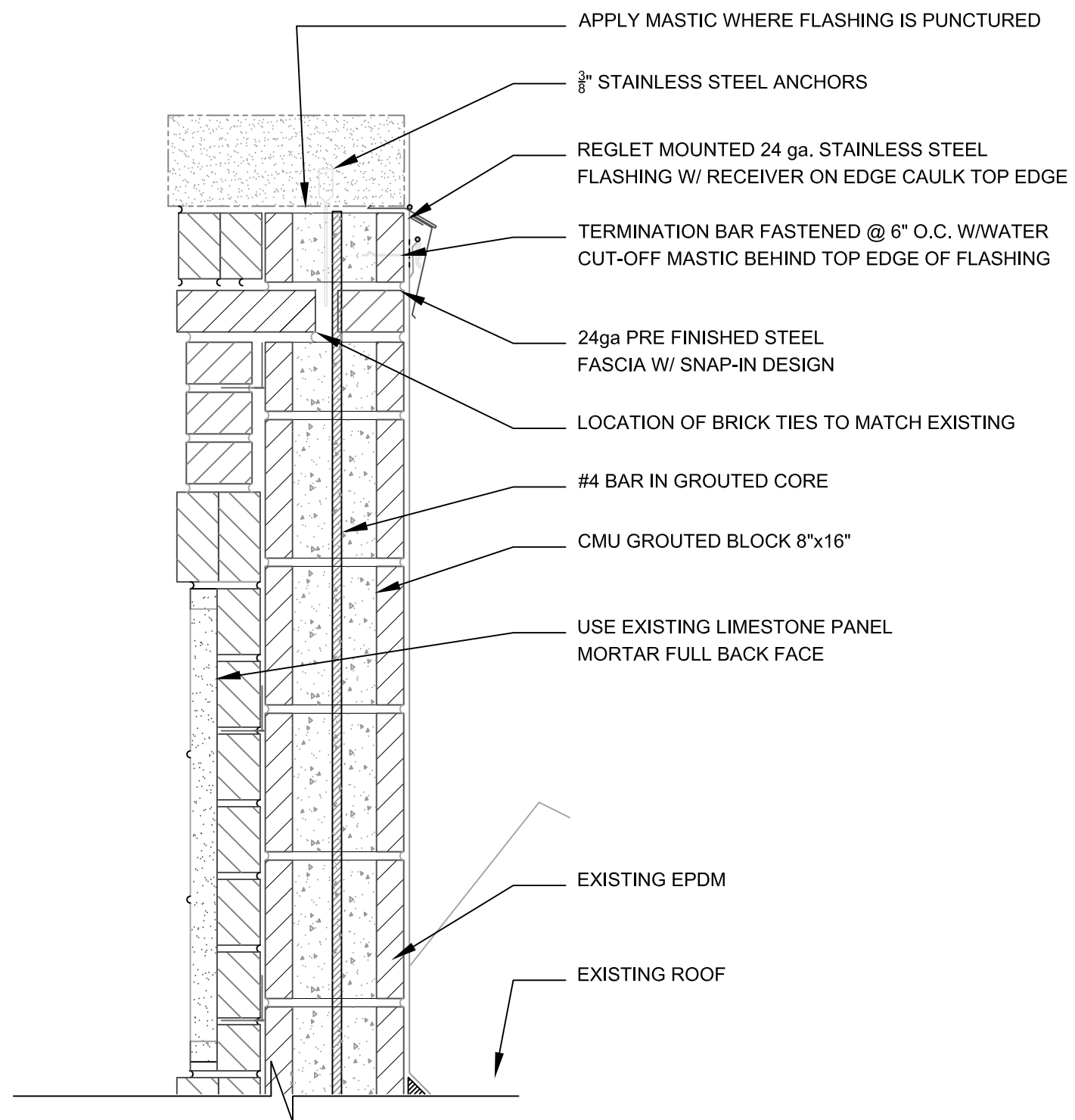
DRAWN  
EV

DATE  
5/31/18

SHEET  
A7



ARCHITECTURAL  
REVIEW SET  
NOT FOR CONSTRUCTION



PARAPET DETAIL 1 A  
SCALE: 1 1/2" = 1'-0"

DISCLAIMER: THIS DRAWING CONTAINS INFORMATION WHICH IS CONFIDENTIAL AND PROPRIETARY AND MUST BE KEPT CONFIDENTIAL AND NOT BE DISCLOSED, IN WHOLE OR IN PART, TO ANYONE WITHOUT PRIOR WRITTEN PERMISSION OF RCL ENGINEERING GROUP. BY ACCESSING THIS DOCUMENT, YOU AGREE TO KEEP CONFIDENTIAL ALL THE INFORMATION DISCLOSED IN THIS SET AND RELATED MATERIALS.

**RCL**  
Engineering Group  
Forensic & Structural Engineering  
- A Business Unit of Roofing Consultants Ltd. -

**Waukesha, WI** 612-238-0802  
**Minneapolis, MN** 612-238-0802  
**Skokie, IL** 847-965-3366  
**Chesterfield, MO** 636-530-3663  
**Indianapolis, IN** 317-584-5440

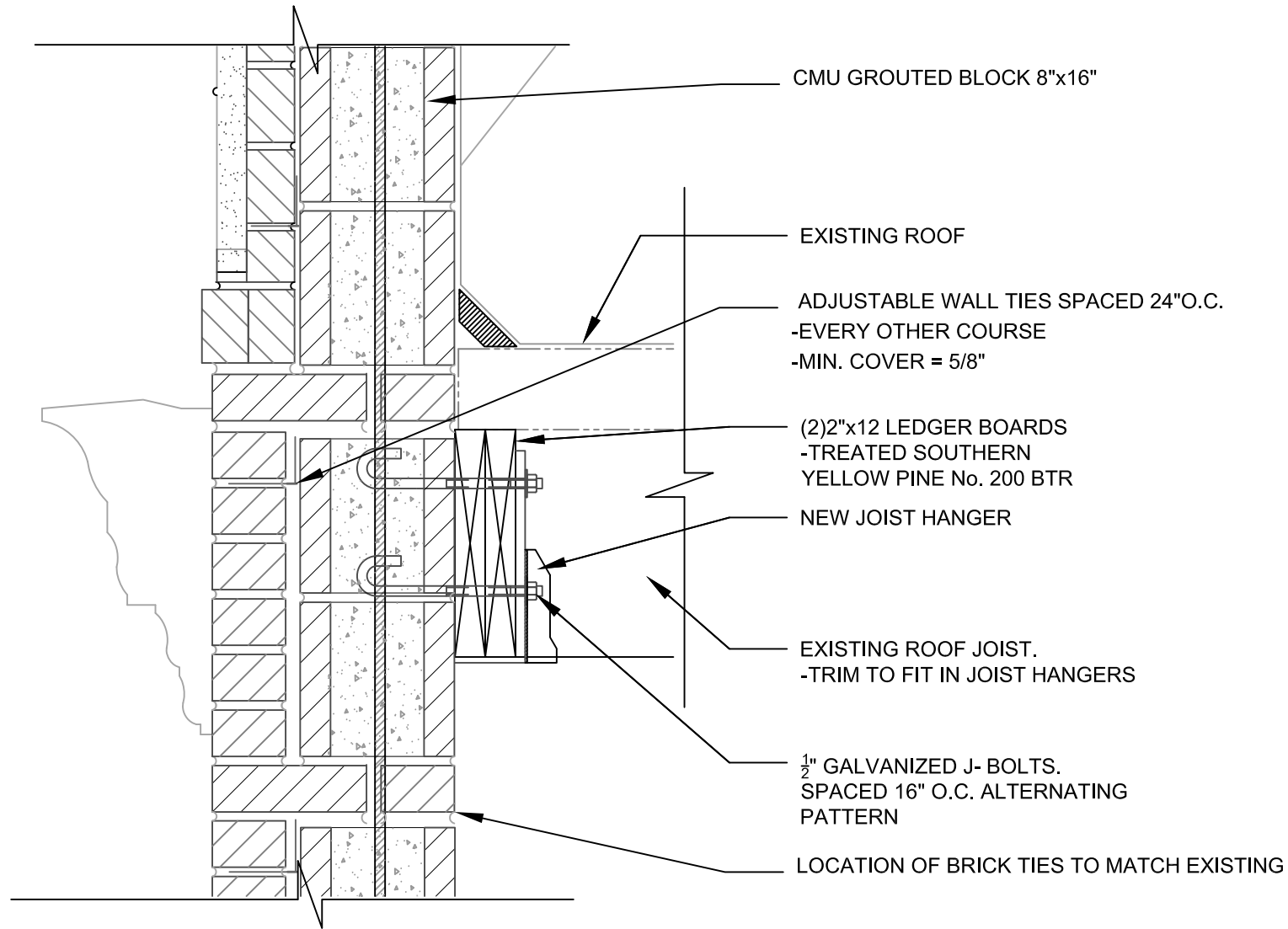
**DETAILS**

Ha Long Bay Restaurant  
 1353 Williamson St.  
 Madison, WI 53703

REVISION	DATE	DESCRIP.
LTR	BY	EV
	06/21/18	ARCH. REV.

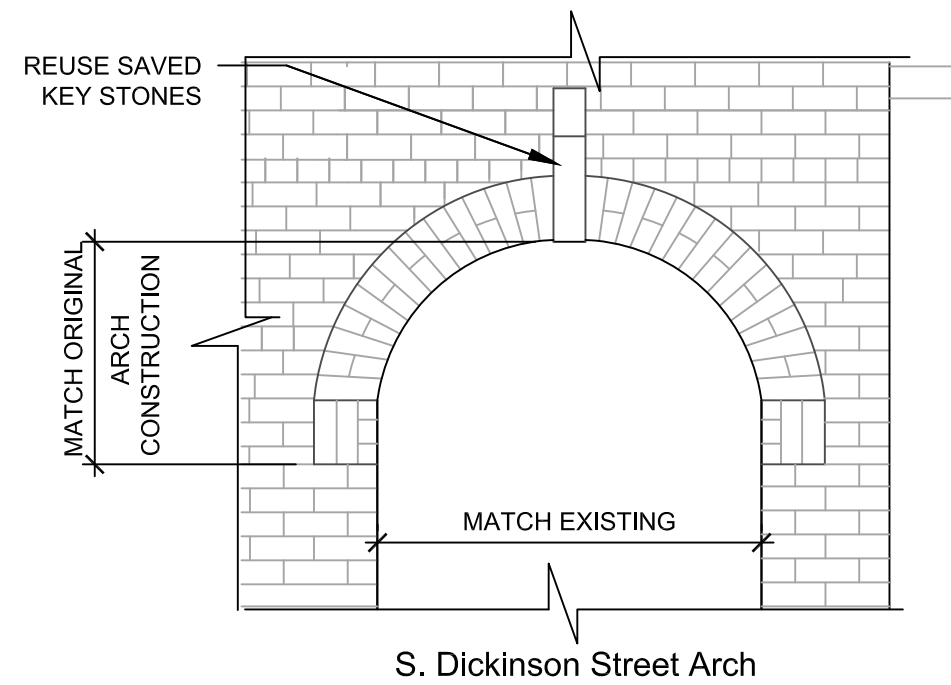
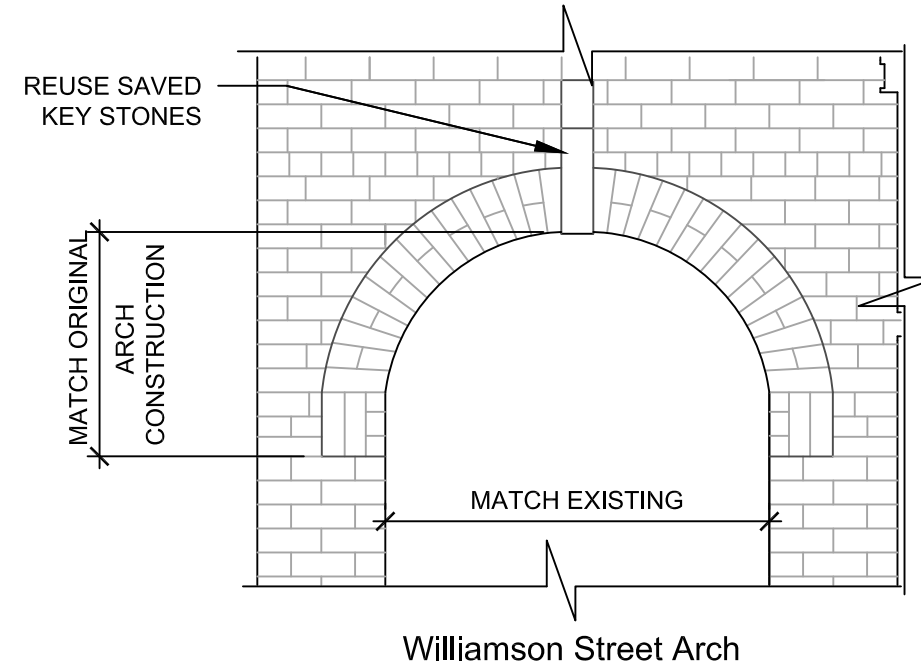
DRAWN  
EV  
 DATE  
5/31/18  
 SHEET  
**A8**

ARCHITECTURAL  
REVIEW SET  
NOT FOR CONSTRUCTION



ROOF DETAIL  
SCALE: 1 1/2" = 1'-0"

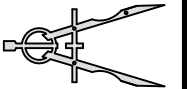
1  
A9



ARCH DETAIL  
SCALE: 1 1/2" = 1'-0"

2  
A9

DISCLAIMER: THIS DRAWING CONTAINS INFORMATION WHICH IS CONFIDENTIAL AND PROPRIETARY AND MUST BE KEPT CONFIDENTIAL AND NOT BE DISCLOSED, IN WHOLE OR IN PART, TO ANYONE WITHOUT PRIOR WRITTEN PERMISSION OF RCL ENGINEERING GROUP. BY ACCESSING THIS DOCUMENT, YOU AGREE TO KEEP CONFIDENTIAL ALL THE INFORMATION DISCLOSED IN THE FILE AND RELATED MATERIALS.



**RCL**  
Engineering Group  
Forensic & Structural Engineering  
- A Business Unit of Roofing Consultants Ltd. -

Waukesha, WI  
262-549-0802  
Minneapolis, MN  
612-238-0802  
Skokie, IL  
847-965-3366  
Chesterfield, MO  
636-530-3663  
Indianapolis, IN  
317-584-5440

DETAILS

Ha Long Bay Restaurant  
1353 Williamson St.  
Madison, WI 53703

REVISION	DATE	DESCRIP.
EV	06/21/18	ARCH. REV.
LTR	BY	

DRAWN  
EV  
DATE  
5/31/18  
SHEET

A9