

**APPLICATION FOR
URBAN DESIGN COMMISSION
REVIEW AND APPROVAL**

AGENDA ITEM # _____
Project # _____

DATE SUBMITTED: <u>10.28.09</u>	Action Requested
UDC MEETING DATE: <u>11.04.09</u>	<input checked="" type="checkbox"/> Informational Presentation
	<input type="checkbox"/> Initial Approval and/or Recommendation
	<input type="checkbox"/> Final Approval and/or Recommendation

PROJECT ADDRESS: Humboldt Mall, Minneapolis WI
ALDERMANIC DISTRICT: 11 702 H. MIDWAY

OWNER/DEVELOPER (Partners and/or Principals) ARCHITECT/DESIGNER/OR AGENT:
TARGET Co. _____
1000 NICOLET Mall _____
MINNEAPOLIS, MN 55403 _____

CONTACT PERSON: _____
Address: JACI BELL
1000 NICOLET Mall MINNEAPOLIS, MN
Phone: 612.761.4134
Fax: _____
E-mail address: JACI.BELL@TARGET.COM

- TYPE OF PROJECT:
(See Section A for:)
- Planned Unit Development (PUD)
 - General Development Plan (GDP)
 - Specific Implementation Plan (SIP)
 - Planned Community Development (PCD)
 - General Development Plan (GDP)
 - Specific Implementation Plan (SIP)
 - Planned Residential Development (PRD)
 - New Construction or Exterior Remodeling in an Urban Design District * (A public hearing is required as well as a fee)
 - School, Public Building or Space (Fee may be required)
 - New Construction or Addition to or Remodeling of a Retail, Hotel or Motel Building Exceeding 40,000 Sq. Ft.
 - Planned Commercial Site

(See Section B for:)
 New Construction or Exterior Remodeling in C4 District (Fee required)

(See Section C for:)
 R.P.S.M. Parking Variance (Fee required)

(See Section D for:)
 Comprehensive Design Review* (Fee required)
 Street Graphics Variance* (Fee required)
 Other _____

*Public Hearing Required (Submission Deadline 3 Weeks in Advance of Meeting Date)

Where fees are required (as noted above) they apply with the first submittal for either initial or final approval of a project.

Madison WI Hilldale Mall



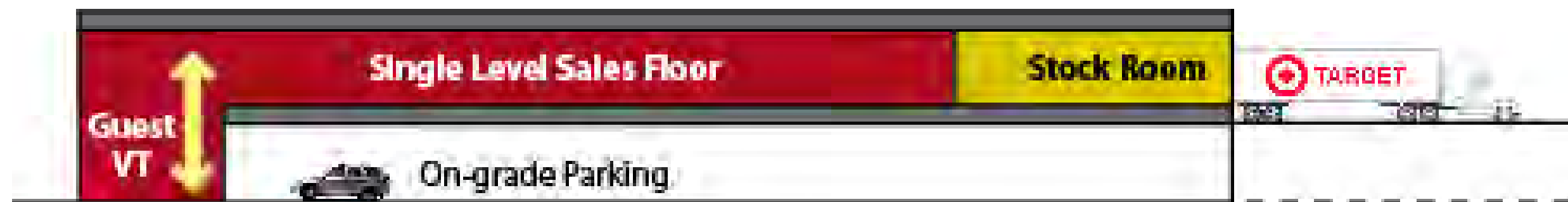
Urban Design Commission
Informational Meeting Nov. 4, 2009
Preview Information Oct. 27, 2009



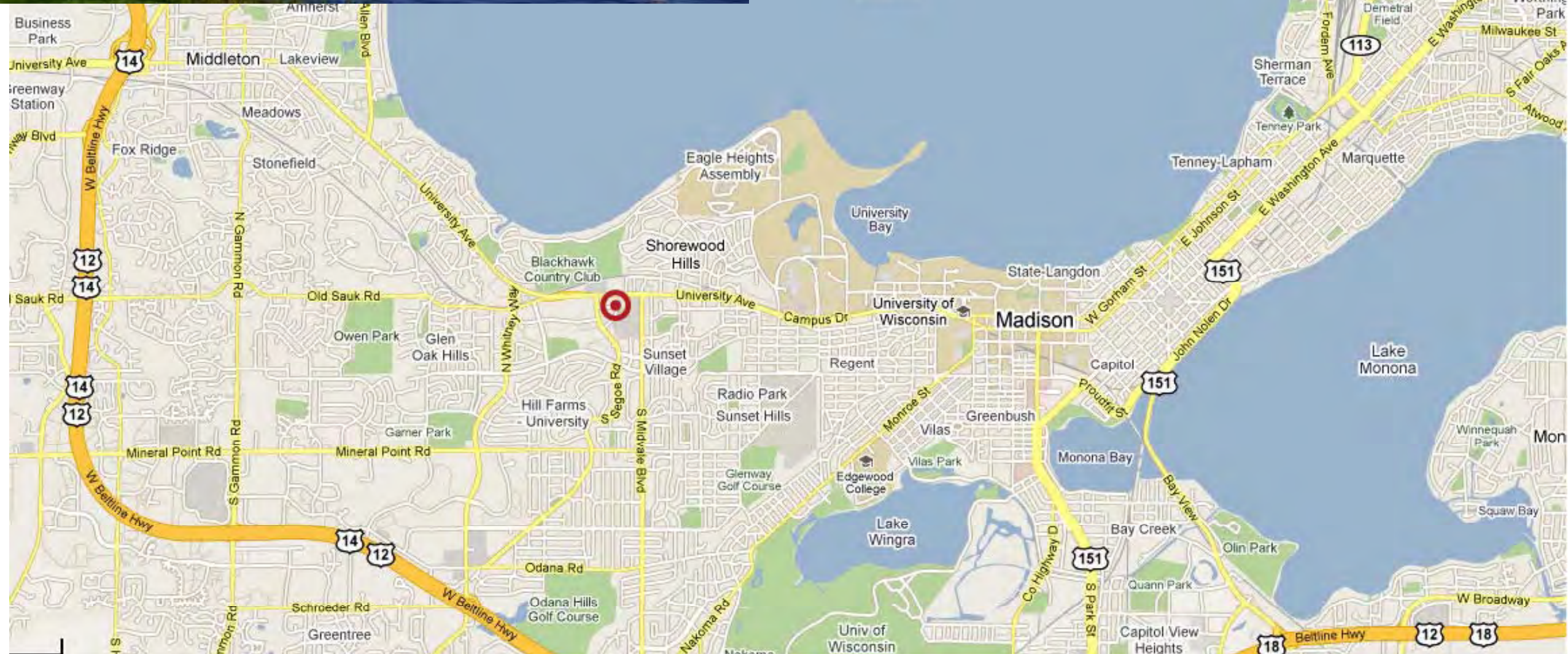
Project Description

This proposed Target store is a 2-level design, with parking at the street level and the store above.

- The site slopes significantly from a high point at the west to the east. The access to receiving is located at the upper level off University, while the parking access is at the lower level off Hilldale Way and Frey Street.
- The 2-story entry lobby is located at the corner of University and Hilldale Way. The lobby will feature 2 elevators, up and down escalators and cart conveyors and stairs to access the store level above.



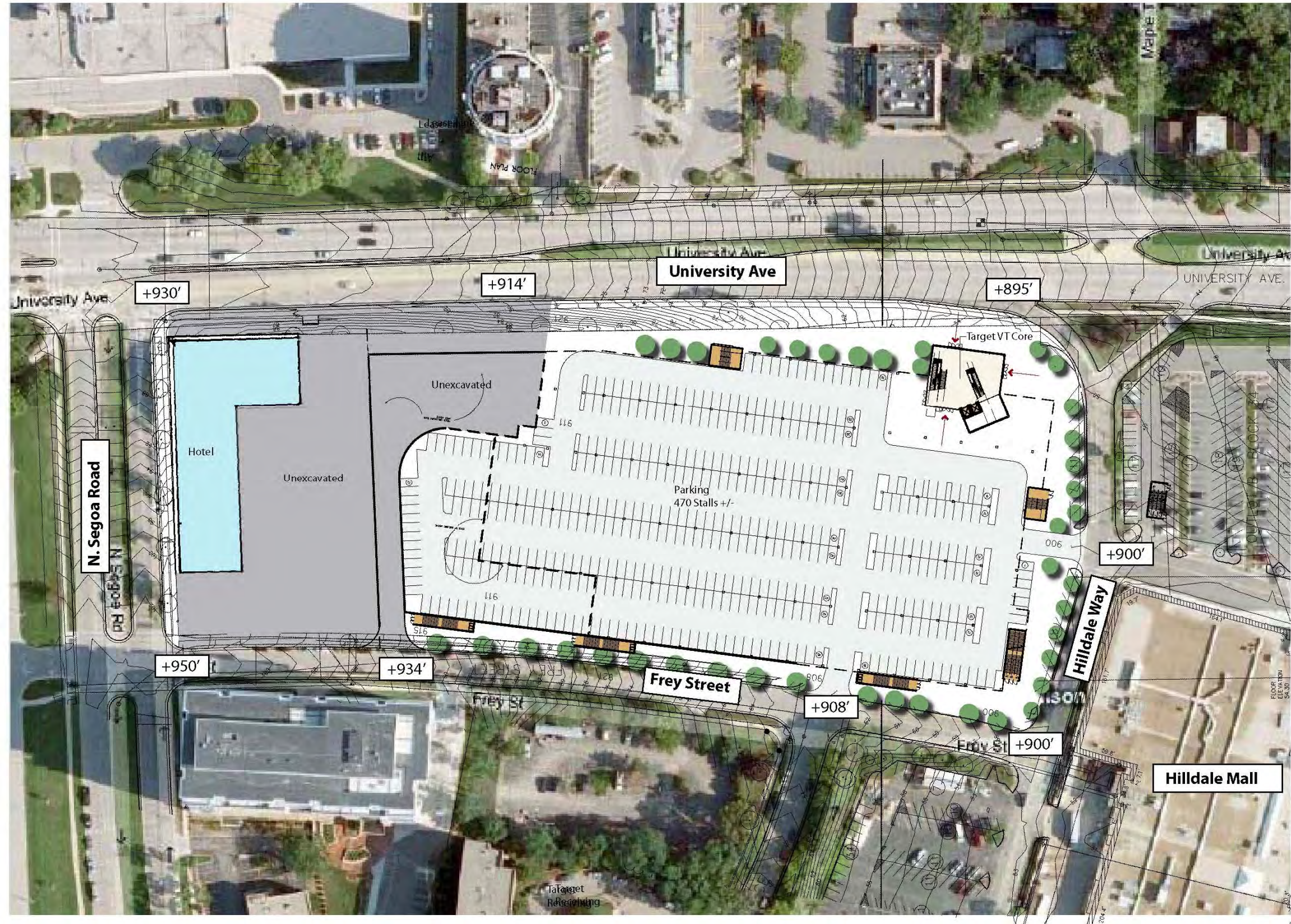
Site Location



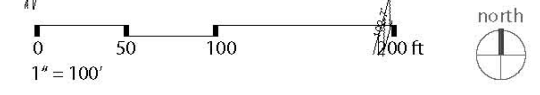
Site Location



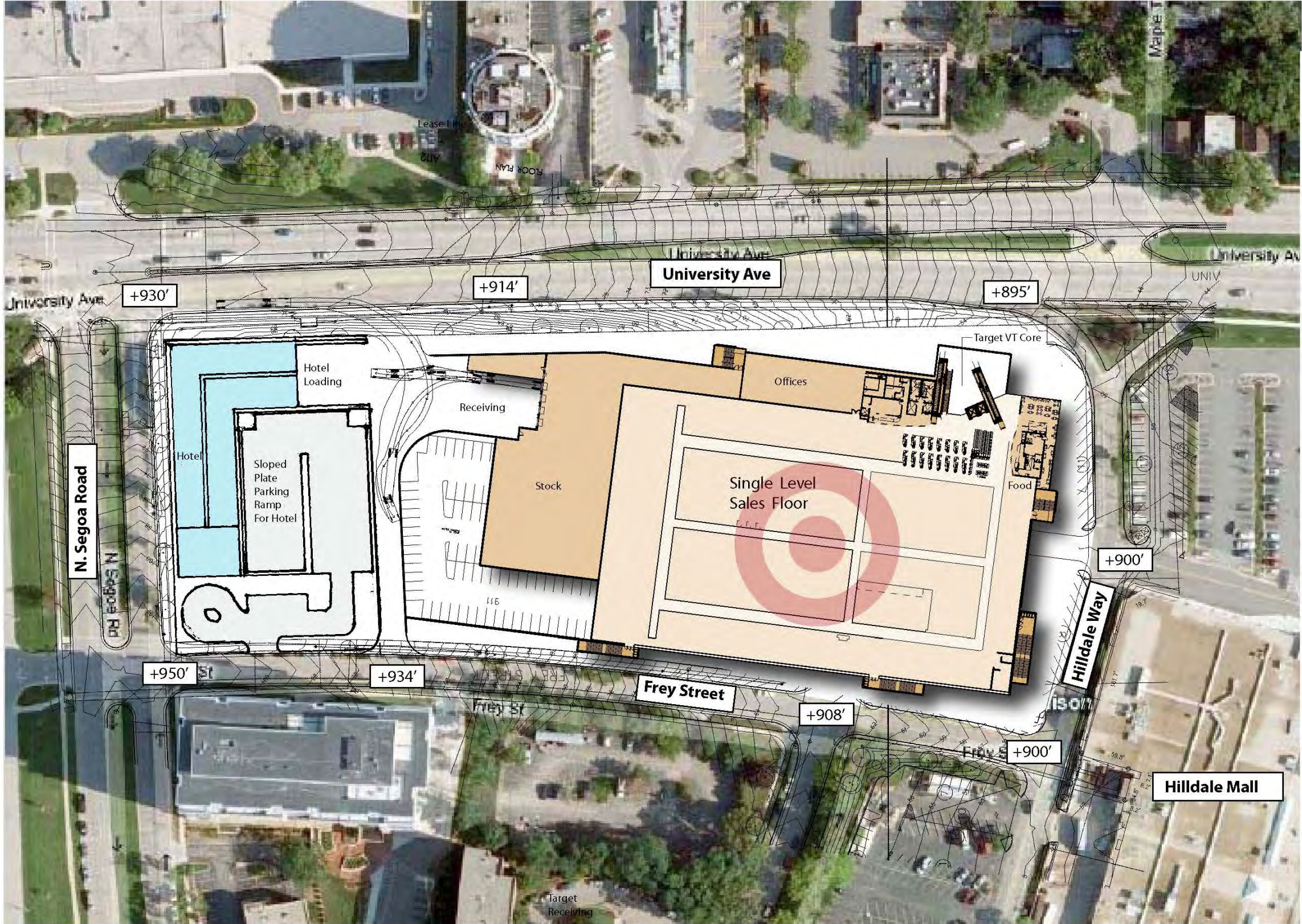
Street Level Plan



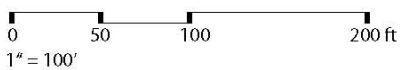
Street Level



Store Level Plan



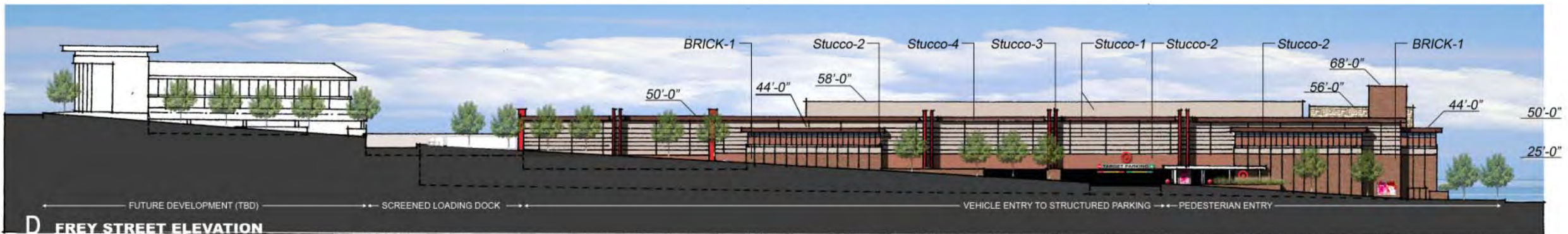
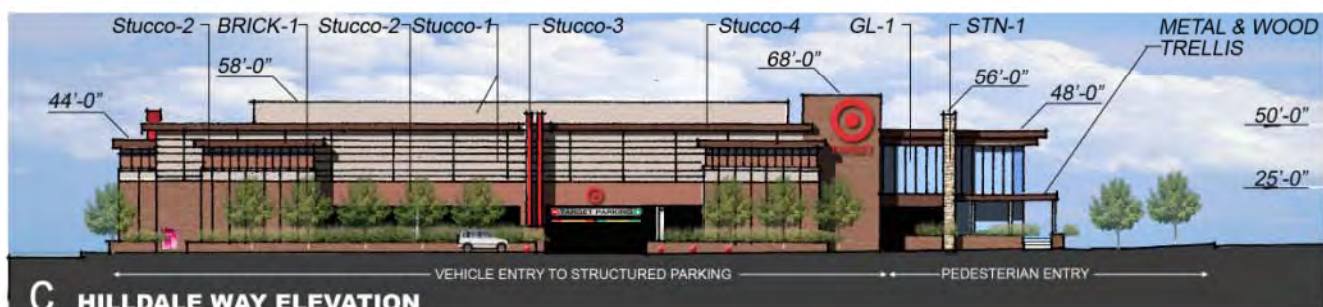
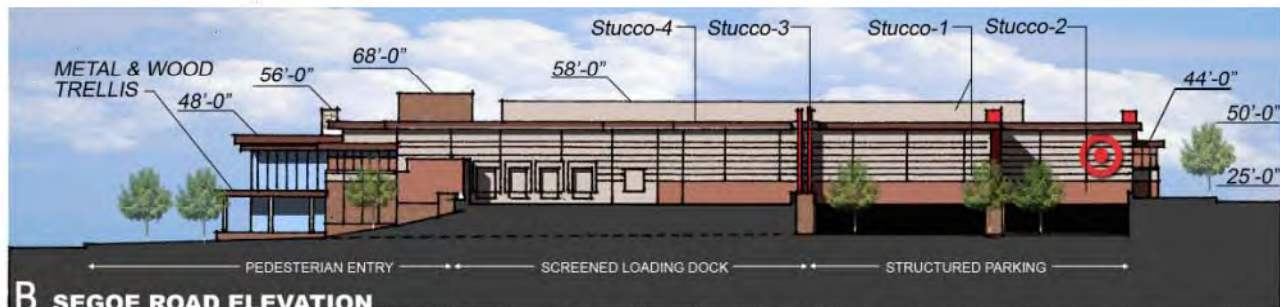
Store Level



Site Plan



Exterior Elevations



finish: Stucco 1	finish: Stucco 2	finish: Stucco 3	finish: Stucco 4	finish: GS-1	finish: GFRM-1	finish: STN-1	finish: CMU-1	finish: BRICK-1	finish: GL-2	finish: GL-3	finish: GL-1
color: C-12 (LIGHT BEIGE)	color: C-14 (SOUTHWEST BRN.)	color: C-1 (RED)	color: C-15	color: C-2 (GREEN)	color: C-20 (CHAMPANGE)	color: C-3 (SANDSTONE)	color: BUFF	color:	color: C-8 (GREY)	color: C-10 (WHITE)	color: CLR (LOW E)
material: EIFS MEDIUM TEXTURE COATING	material: EIFS MEDIUM TEXTURE COATING	material: EIFS SMOOTH TEXTURE COATING	material: EIFS SMOOTH TEXTURE COATING EAVE CONDITION	material: GREENSCREEN VERTICAL LAND-SCAPE PANEL	material: PRE-FINISHED GLAZING FRAMING SYSTEM	material: RANDOM ASHLAR COURSING STONE VENEER SYSTEM	material: INER-GAL COLORED CMU - OLDCASTLE PRAIRIESTONE	material: ENOCOTT MEDIUM IRONSPOT	material: SPAN-DREL GLASS PANEL	material: TRANSLUCENT GLASS PANEL	material: CLEAR GLASS (TYPE VARIES BY CODE REQUIREMENT)

