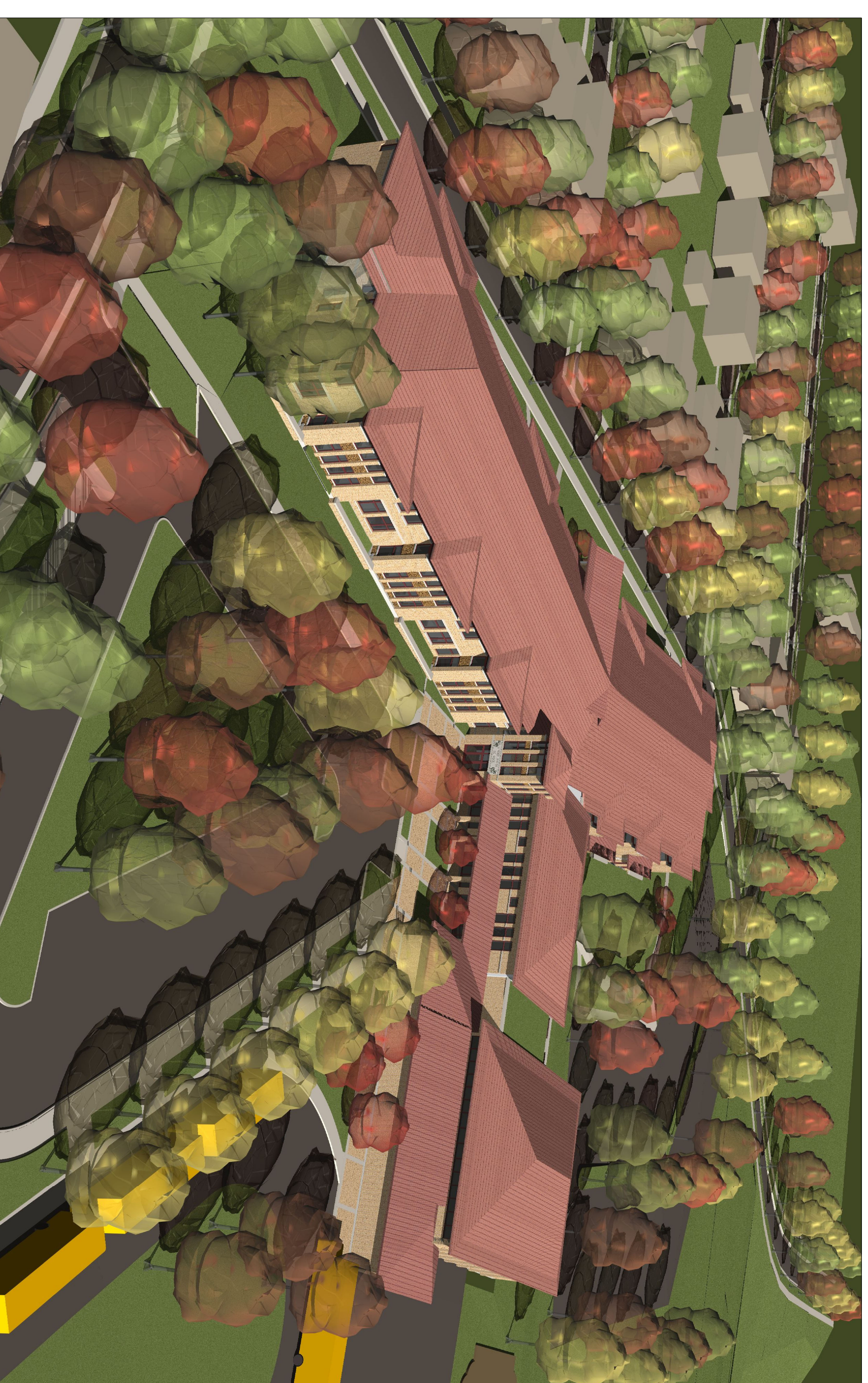




CONCEPTUAL DESIGN

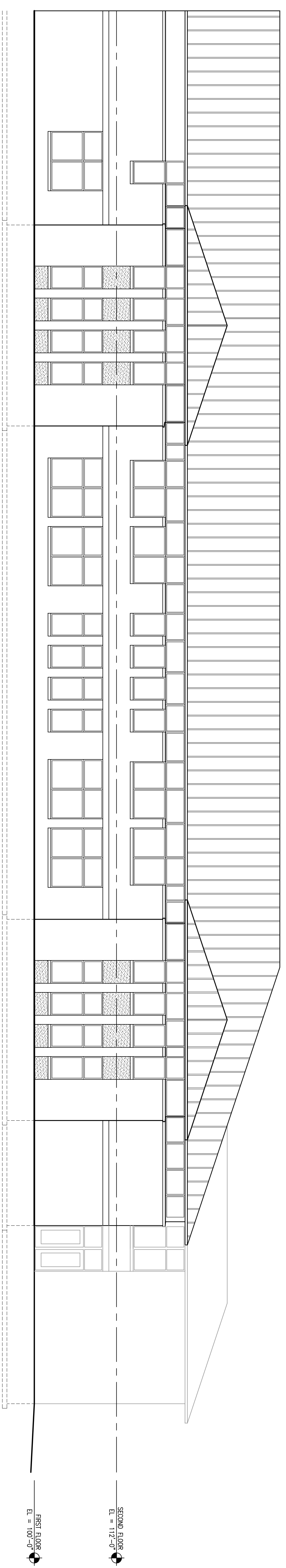
- The proposed school responds to the layout of the Linden Park neighborhood and complements the new, adjacent city park.
- The building has approximately 88,000 square feet.
- The school will be environmentally friendly, meeting the LEED (Leadership in Energy and Environmental Design) "silver" standard.
- The school's central wing houses the larger common spaces--multipurpose room and library--and provides ample daylight and allows good views down the hill to the east.
- The school will have five classrooms each for kindergarten through fifth grade. These grade levels are paired (K-1, 2-3, 4-5) with flexible resource rooms provided in each wing.
- The first floor of the west wing contains other shared spaces: art and music rooms, the REACH classroom, and the office.



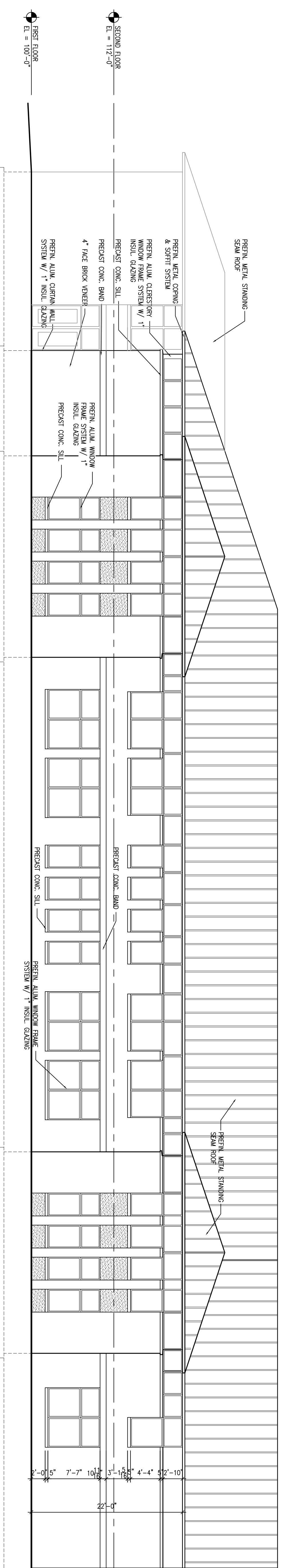
AERIAL VIEW FROM SOUTHWEST



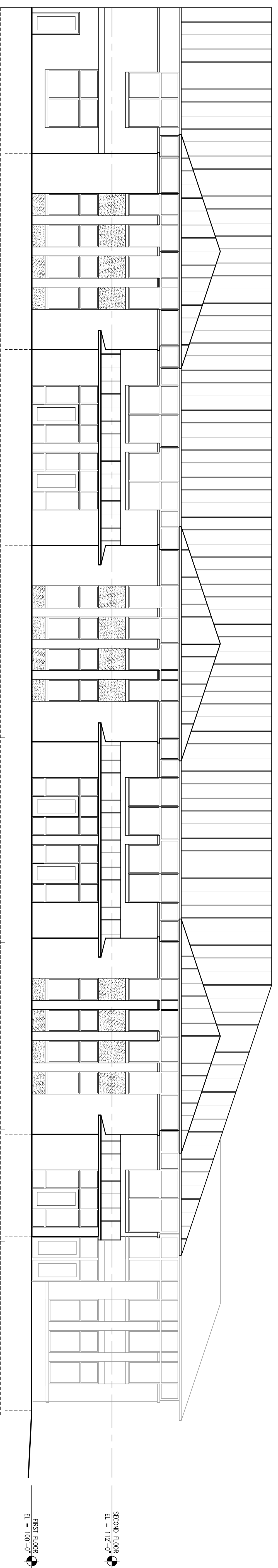
LOCATION MAP



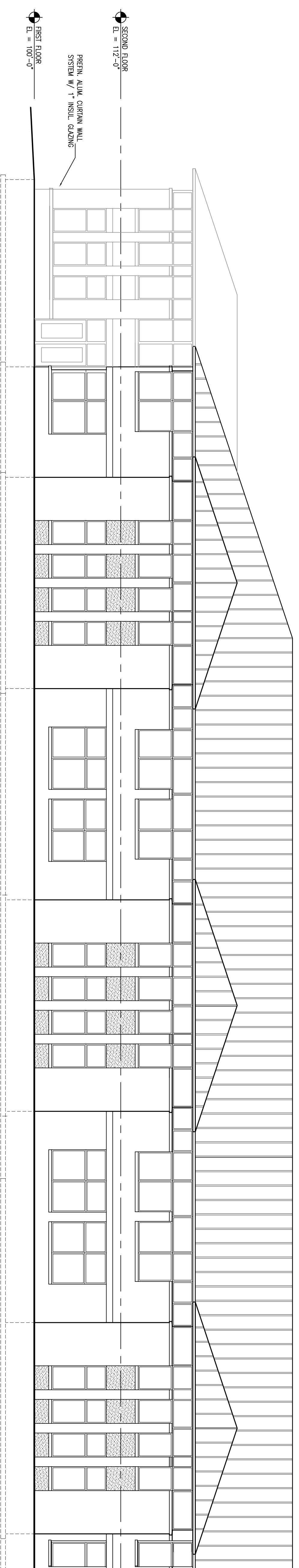
1 Area A' - North Elevation
1/8" = 1'-0"



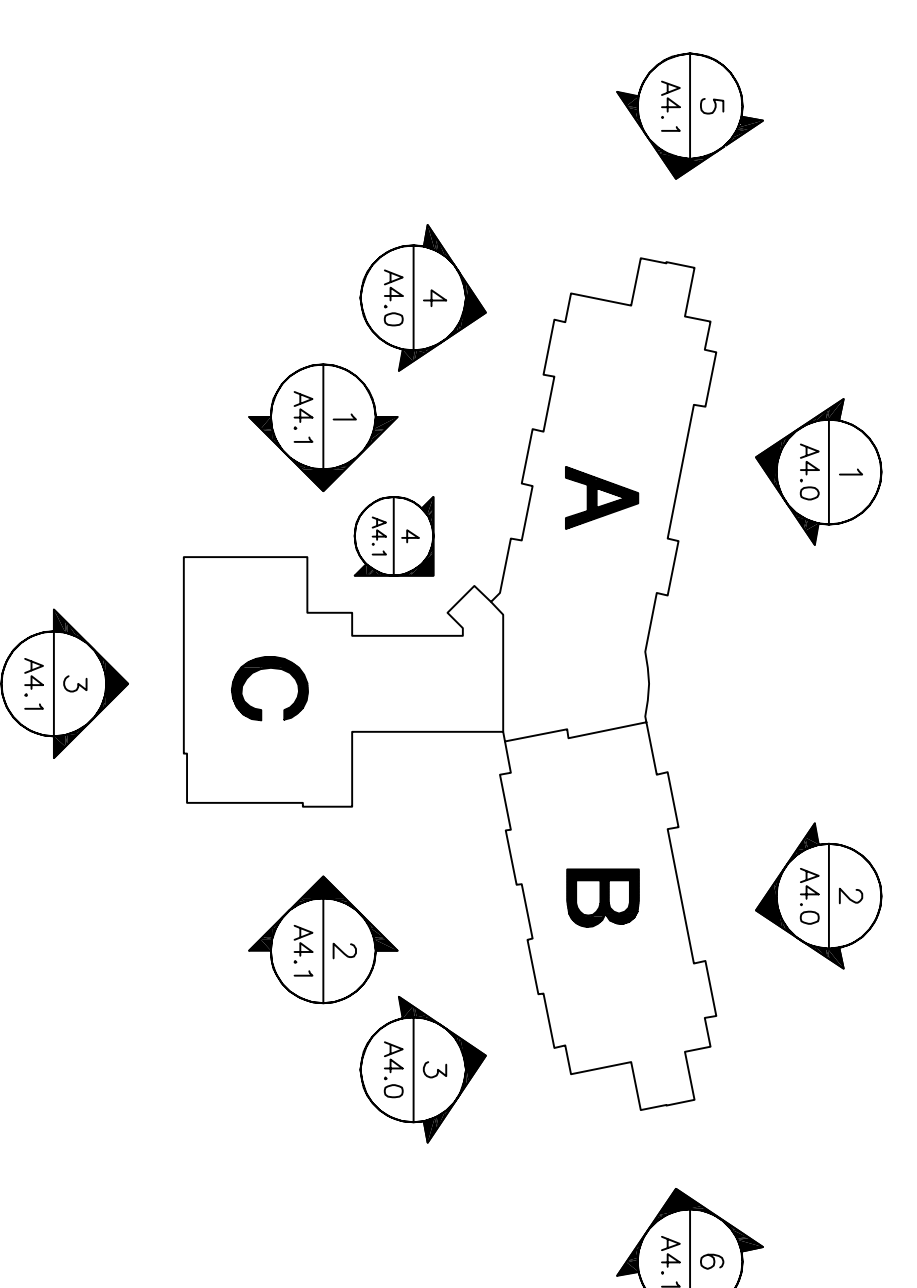
2 Area B' - North Elevation
1/8" = 1'-0"

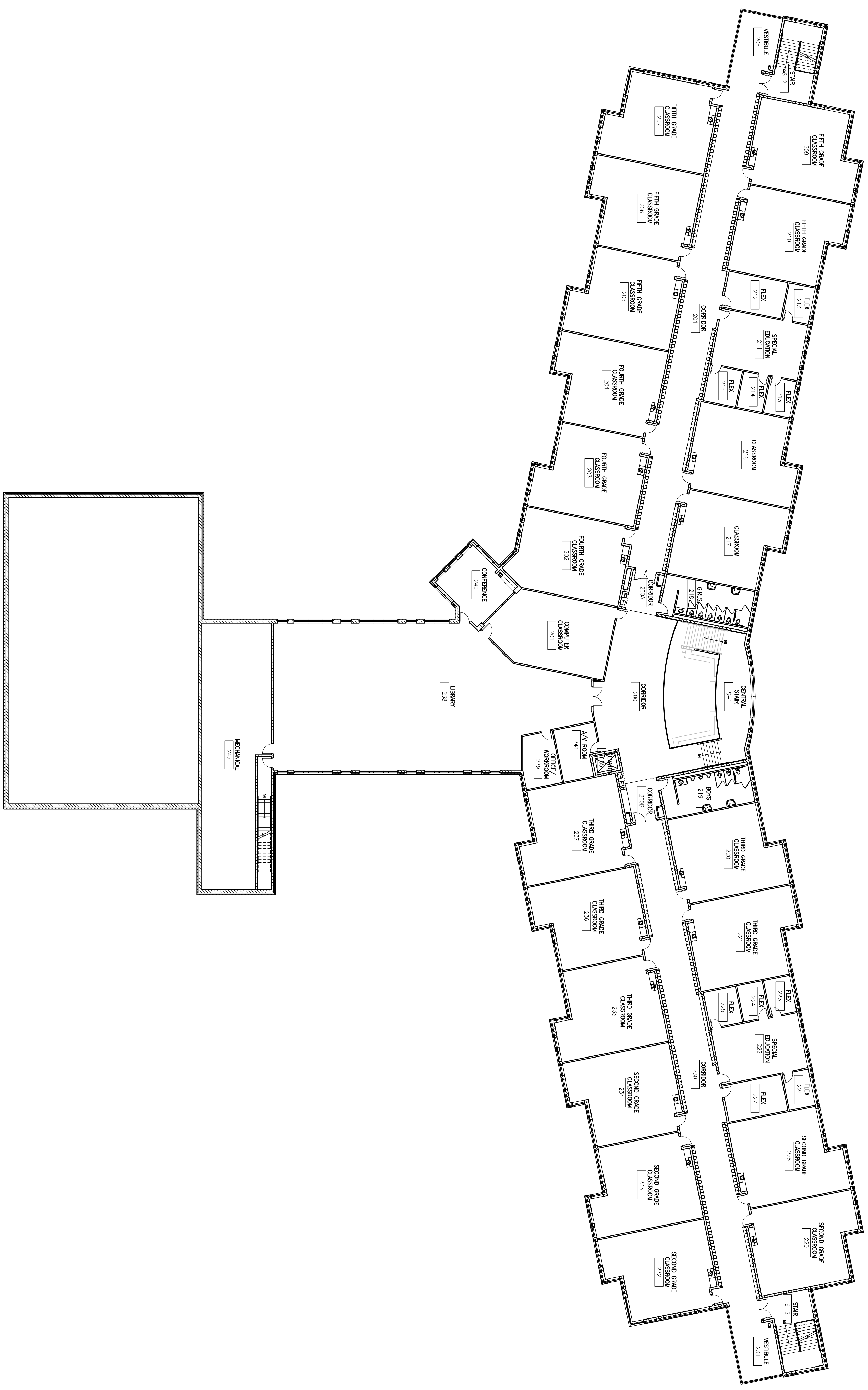


3 Area B' - South Elevation
1/8" = 1'-0"



4 Area A' - South Elevation
1/8" = 1'-0"





1 Overall Second Floor Plan
1/16" = 1'-0"

zimmerman
ARCHITECTURAL STUDIOS, INC.

205 W. Highland Avenue
Suite 400
Milwaukee, WI 53213
Telephone: (414) 784-8800
Facsimile: (414) 784-8899

7707 Harvard Avenue
Milwaukee, WI 53213
Telephone: (414) 784-8800
Facsimile: (414) 784-8822

Consultant:

Project:
Madison Metropolitan School District
Linden Park Elementary School

Location:
801 Redden Drive
Verona, WI 53593

Key Plan:

North

Sheet:
Overall Second Floor Plan

Scale: 1/16" = 1'-0"

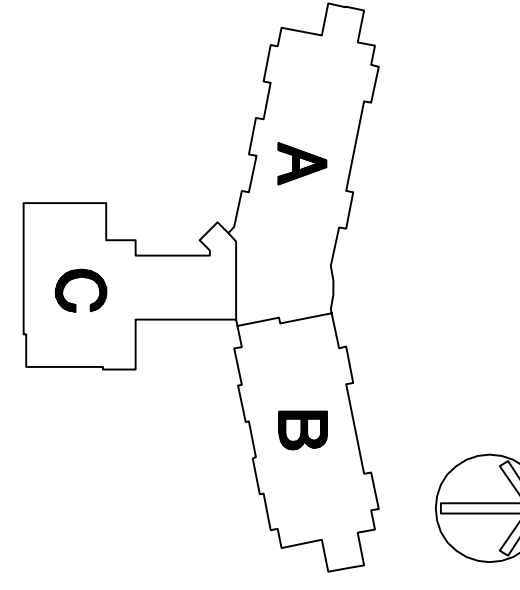
Revisions:

No.	Date	Description
1	11/29/06	Revised - ACC Mechanical Schedule

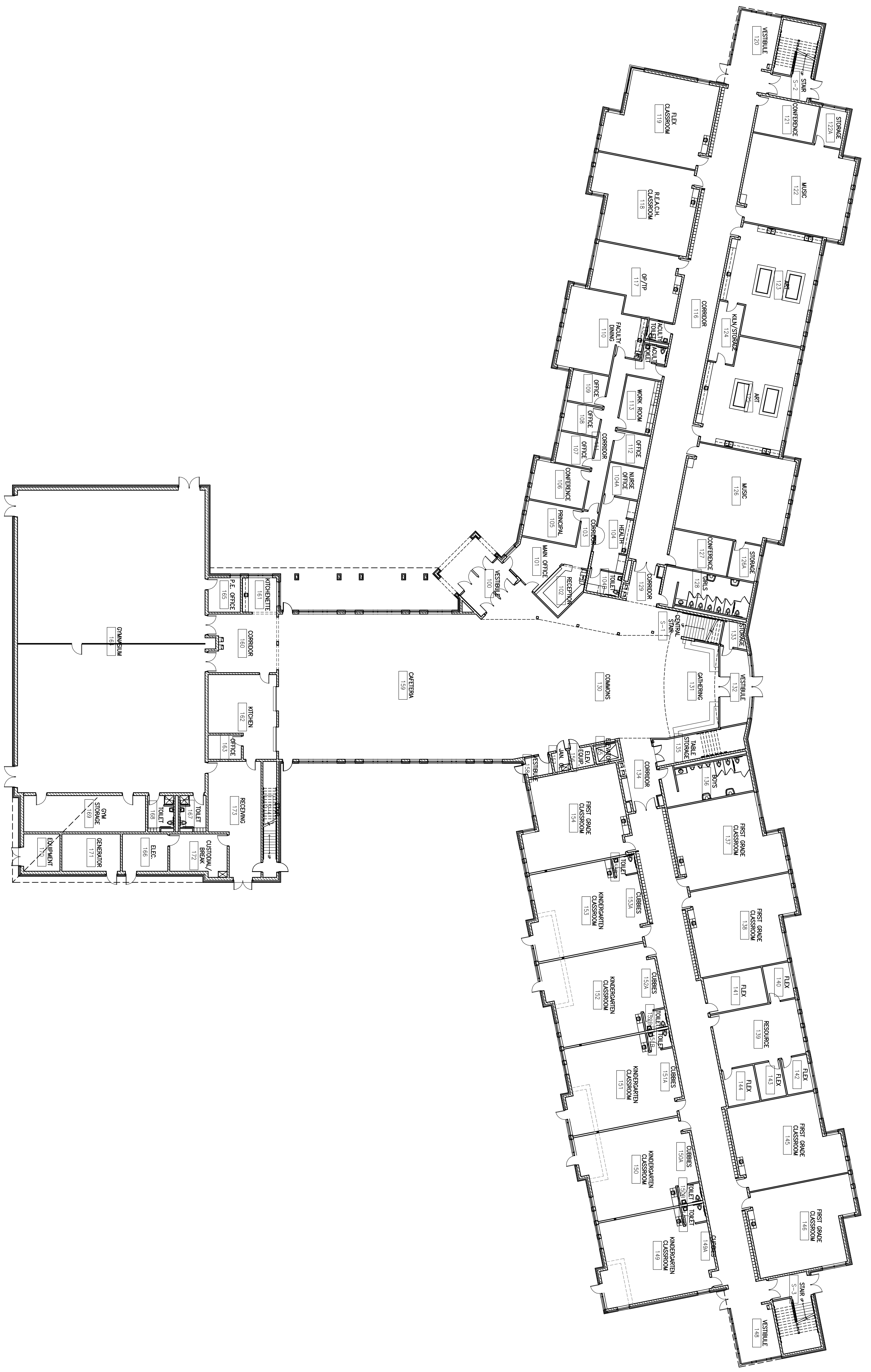
Date: November 29, 2006

Project No.: 060092.00

Sheet No.:



1 Overall First Floor Plan
1/16" = 1'-0"

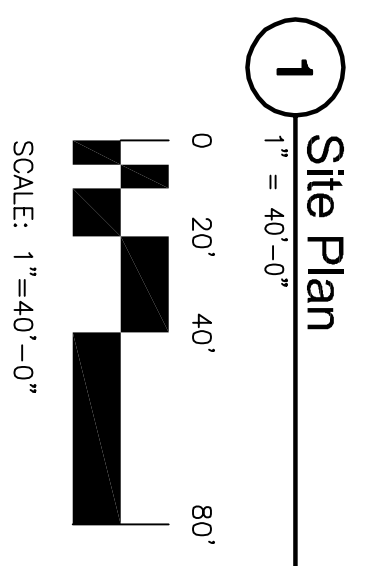


Scale: 1/16" = 1'-0"

Revisions:

No.	Date	Description
1/1/2006	Madison - 100 Milwaukee Summit	

Date: November 29, 2006
Project No.: 060092.00
Sheet No.:



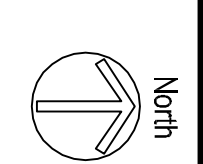
zimmerman
 ARCHITECTURAL STUDIOS, INC.

205 W. Highland Avenue
 Suite 400
 Milwaukee, WI 53233
 Telephone: (414) 274-8800
 Facsimile: (414) 274-8828
 Consultant

7707 Harvard Avenue
 Milwaukee, WI 53213
 Telephone: (414) 474-8800
 Facsimile: (414) 474-8828
 Consultant

Project: **Madison Metropolitan School District**
 Linden Park Elementary School

Location:
 801 Redan Drive
 Verona, WI 53593



Sheet:
 Site Plan

Scale: 1" = 40'-0"

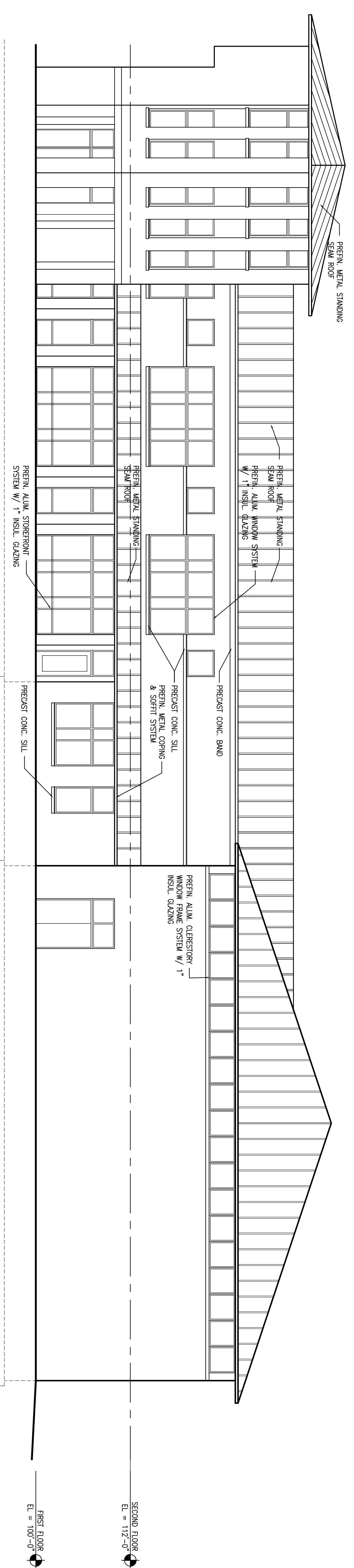
Revisions:

No.	Date	Description
1/1/2006	Madison - 100 Milwaukee Street	

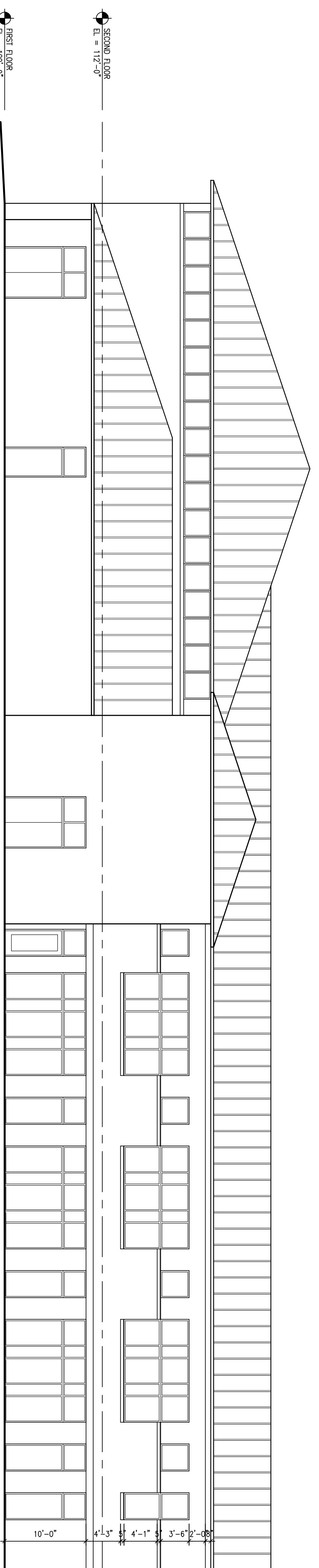
Date: November 29, 2006

Project No.: 060092.00

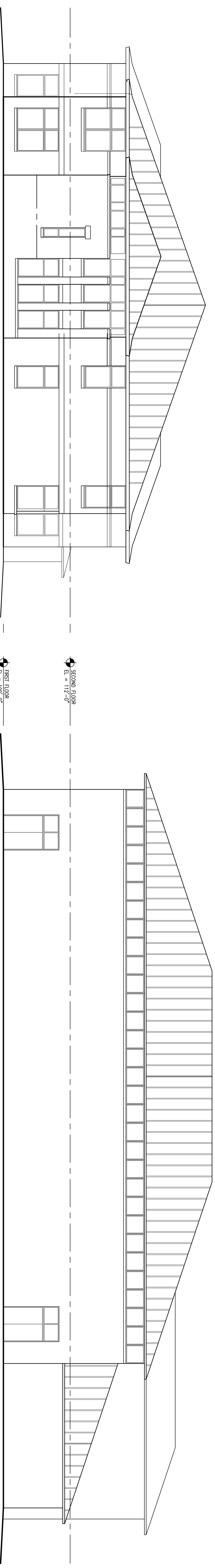
Sheet No.:



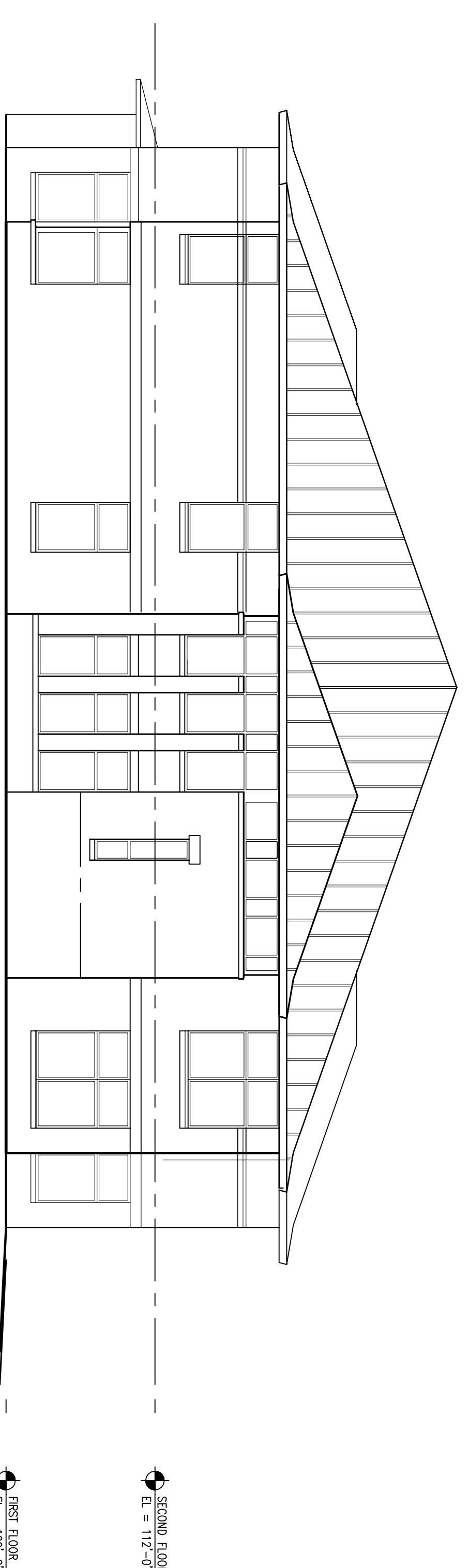
1 Area 'A' & 'C' - West Elevation
1/8" = 1'-0"



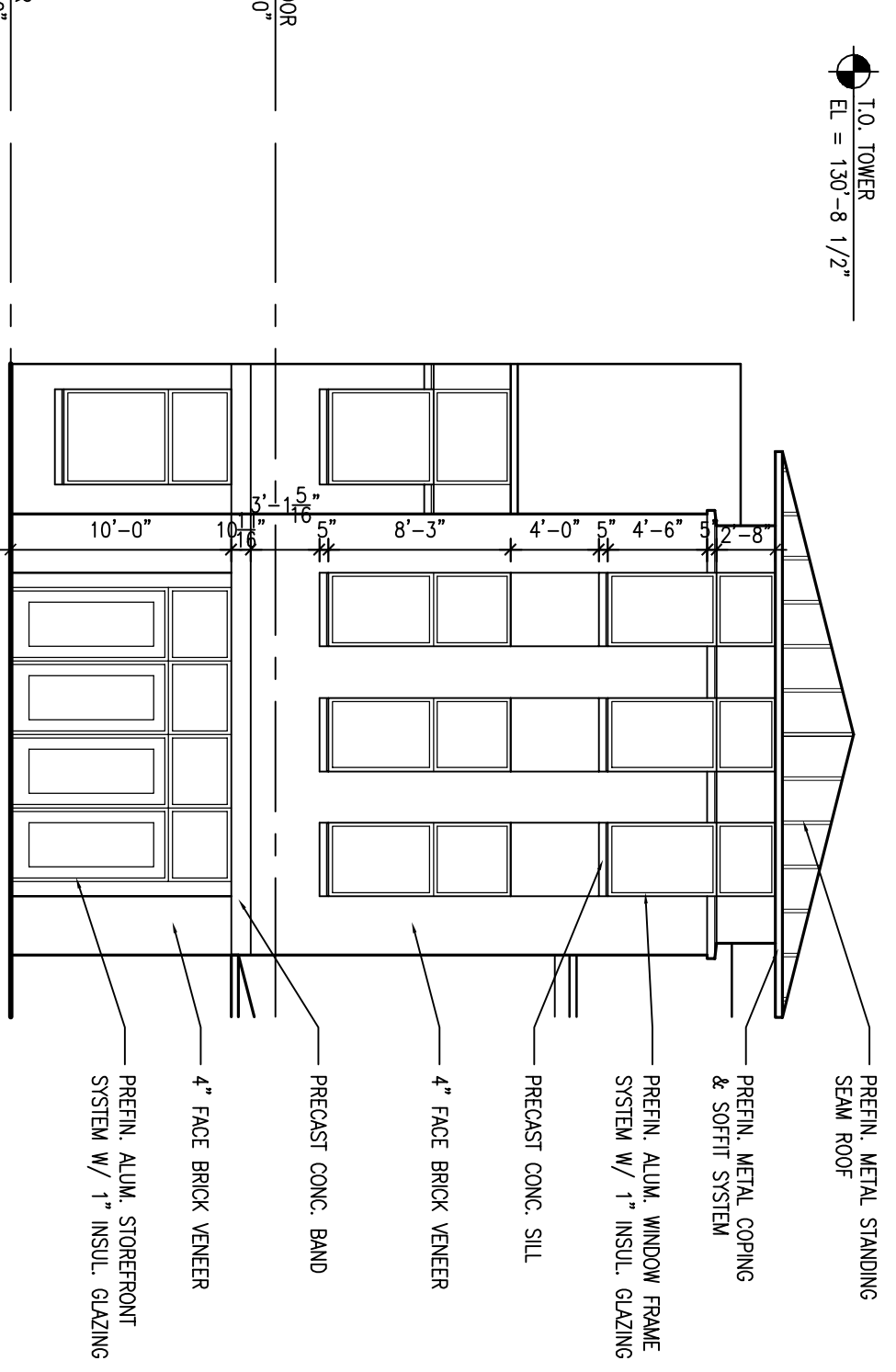
2 Area 'A', 'B' & 'C' - East Elevation
1/8" = 1'-0"



5 Area 'A' - West Elevation
1/8" = 1'-0"



6 Area 'B' - East Elevation
1/8" = 1'-0"



3 Area 'C' - South Elevation
1/8" = 1'-0"

4 Area 'C' - Entrance Elevation
1/8" = 1'-0"

