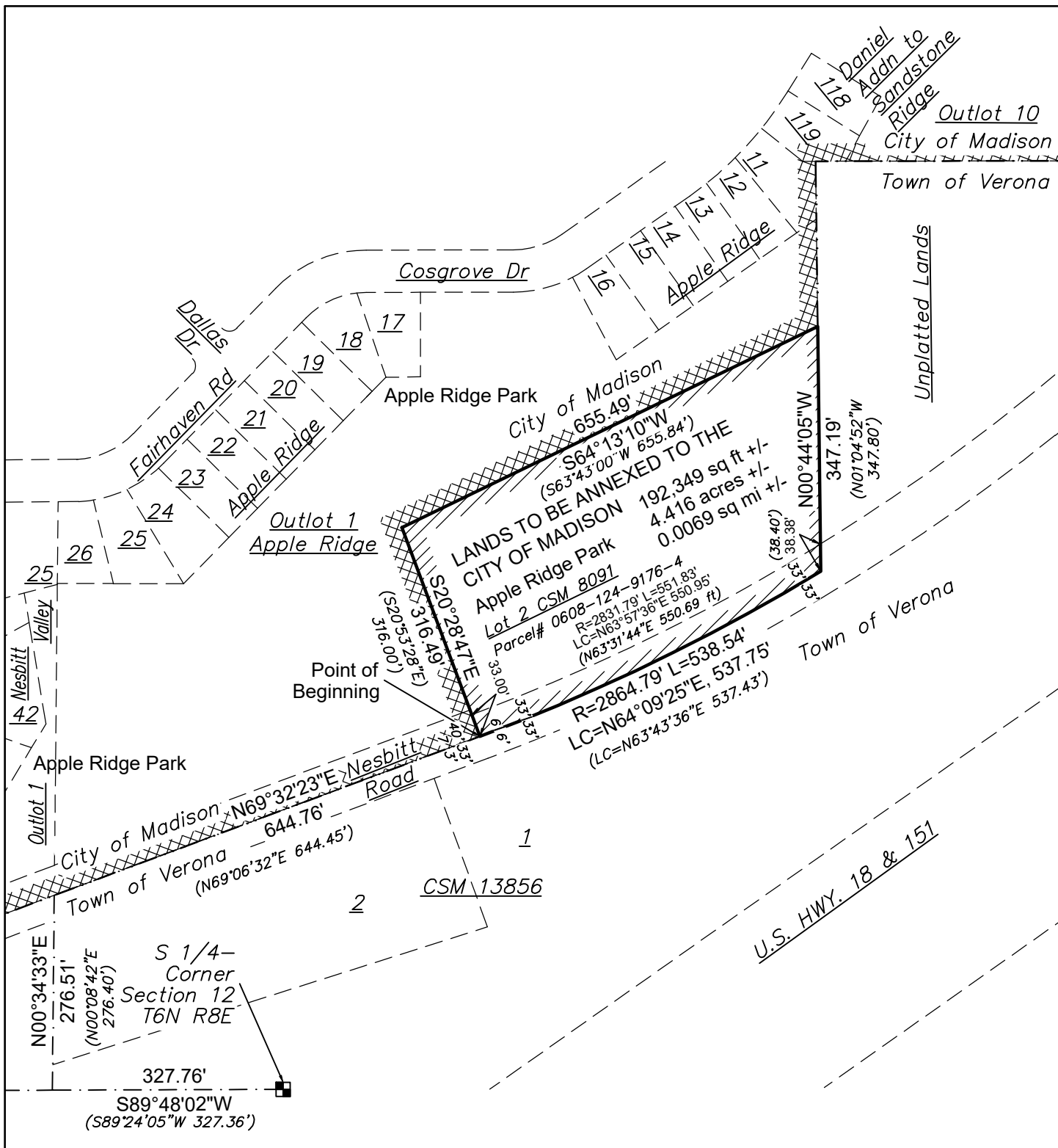


EXHIBIT B



SCALE MAP: LANDS TO BE ANNEXED TO THE CITY OF MADISON APPLE RIDGE PARK

Lot 2 CSM 8091 & part of Nesbitt Rd, in the SW1/4 of SE1/4 of Section 12 T6N R8E Town of Verona, Dane County, WI Prepared Oct 29, 2019

City of Madison
 Dept. of Public Works - Parks Div.
 City-County Building, Suite 104
 210 Martin Luther King Jr. Blvd.
 Madison, WI 53703

Grid North
 WISCRS-Dane
 NAD 83(2007)

Graphical Scale
 0 200 ft

play MADISON PARKS