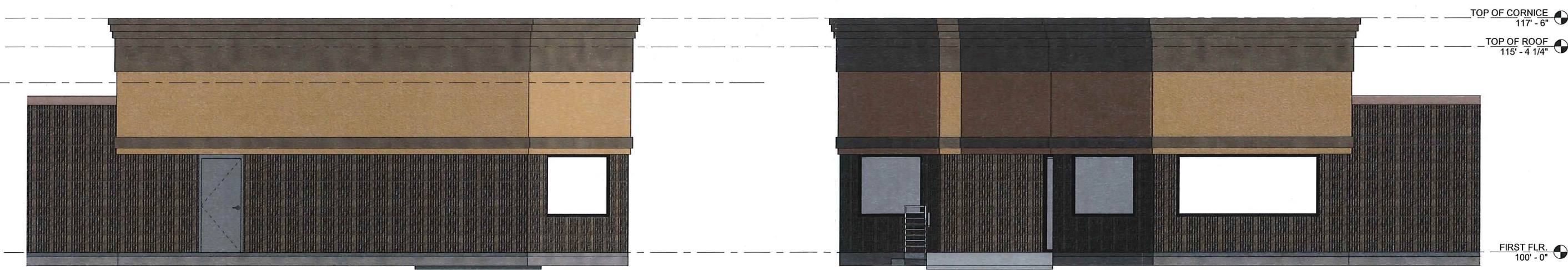




① SOUTH ELEVATION
 SCALE: 1/8" = 1'-0" on 11" x 17"
 1/4" = 1'-0" on 22" x 34"



③ WEST ELEVATION
 SCALE: 1/8" = 1'-0" on 11" x 17"
 1/4" = 1'-0" on 22" x 34"

② EAST ELEVATION
 SCALE: 1/8" = 1'-0" on 11" x 17"
 1/4" = 1'-0" on 22" x 34"

UDC Handout No. 3



General Engineering Company
 P.O. Box 340 • 916 Silver Lake Dr. • Portage, WI 53901
 608-742-2169 (Office) • 608-742-2592 (Fax)
 www.generalengineering.net
This document contains confidential or proprietary information of General Engineering Company, Inc. The information contained herein is not to be distributed, copied, or used in whole or in part except as specifically authorized by General Engineering Company, Inc.

ELEVATIONS
 4802 E. Washington Exterior Renovation
 Richard Lynn / Lynn Properties
 City of Madison
 Dane county, Wisconsin

REVISIONS	NO.	BY	DATE
UDC SUBMITTAL	1	TJM	6/3/14

1/4" = 1'-0"
 FULL SIZE SCALE

DRAWN BY	TJM
DATE	06/03/2014
GEC FILE NO.	2-0813-275
SHEET NO.	2.0



General Engineering Company

P.O. Box 340 • 916 Silver Lake Dr. • Portage, WI 53901
608-742-2169 (Office) • 608-742-2592 (Fax)
www.generalengineering.net

This document contains confidential or proprietary information of General Engineering Company, Inc. Neither this document nor the information herein is to be reproduced, distributed, copied or disclosed, either in whole or in part except as specifically authorized by General Engineering Company, Inc.

EXTERIOR PERSPECTIVES
4802 E. Washington Exterior Renovation
Richard Lynn / Lynn Properties

City of Madison
Dane county, Wisconsin

REVISIONS	NO.	BY	DATE
UDC SUBMITTAL	1	TJM	6/3/14

1/2" = 1'-0"
FULL SIZE SCALE

DRAWN BY TJM
DATE 06/03/2014
GEC FILE NO. 2-0813-275
SHEET NO.

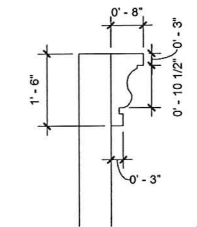


① SOUTH EAST ELEVATION

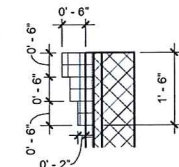
BUILDING COLORS:
FLUTED BLOCK & CORNICE COLOR = CIMMARON #3170
STUCCO & BUILDING BODY = MESILLA #3140
NEW STORE FRONT WINDOW FRAMES = DARK BRONZE
GLASS = REFLECTIVE FILM TO MATCH EXISTING



② SOUTH WEST ELEVATION



④ CORNICE OPTION 2
1/2" = 1'-0"



③ CORNICE OPTION 1
1/2" = 1'-0"