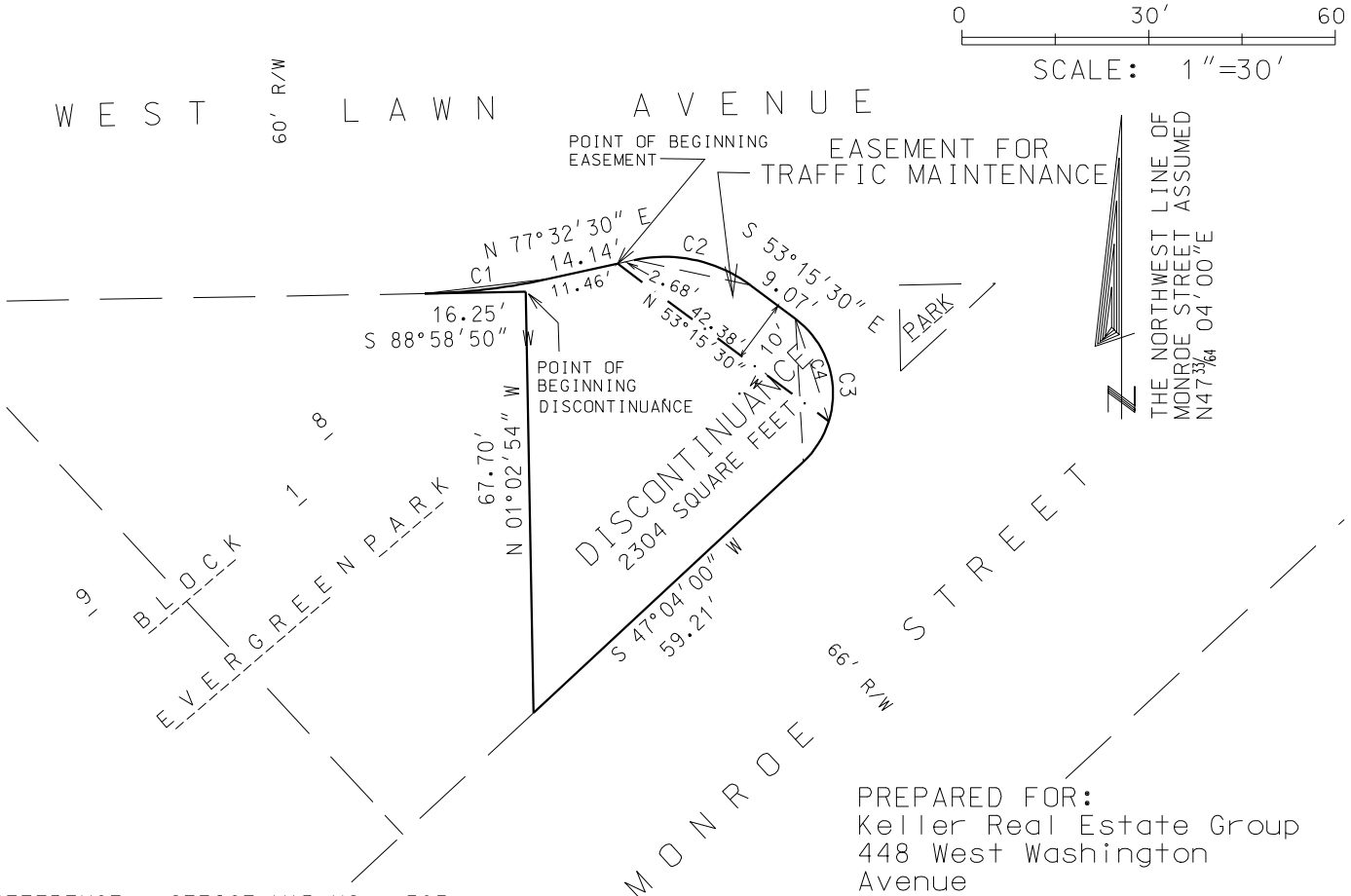
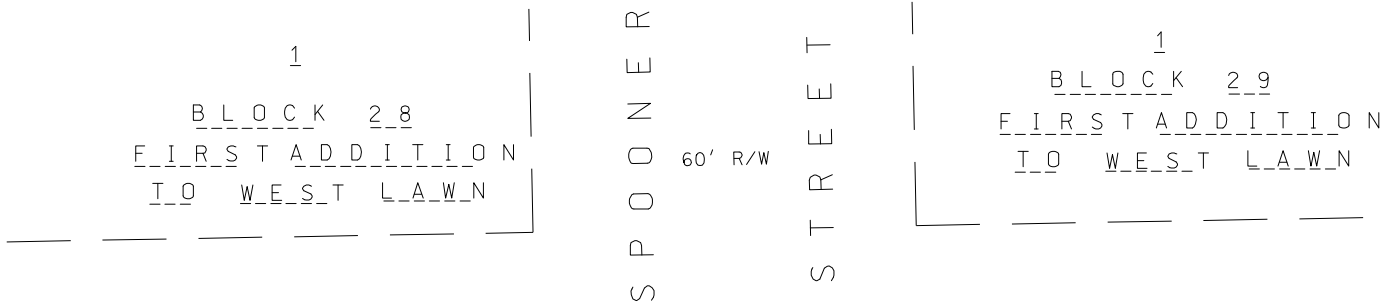


PLAT OF DISCONTINUANCE AND EASEMENT

Part of West Lawn Avenue and part of Spooner Street, located in the NE 1/4 of the SW 1/4 of Section 22, T7N, R9E, City of Madison, Dane County, Wisconsin

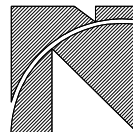


REFERENCE: OFFICE MAP NO. 525

CURVE TABLE

CURVE	ARC LENGTH	CENTRAL ANGLE	RADIUS	CHORD LENGTH	CHORD BEARING
C1	19.96'	11°26'20"	100.00'	19.93'	N 83°15'40" E
C2	19.75'	49°12'00"	23.00'	19.15'	S 77°51'30" E
C3	26.27'	100°19'30"	15.00'	23.04'	S 03°05'45" E
C4	18.46'	70°31'44"	15.00'	17.32'	S17°59'38"E

PREPARED FOR:
Keller Real Estate Group
448 West Washington
Avenue
Madison, WI 53703



Keith Notbohm
Land Surveying, Inc.
6314 Odana Road, Suite A
Madison, Wisconsin 53719
(608) 277-0503

OFFICE MAP NO. 623 S
SHEET 1 OF 3

PREPARED: June 2, 2005 REVISED JULY 6, 2005