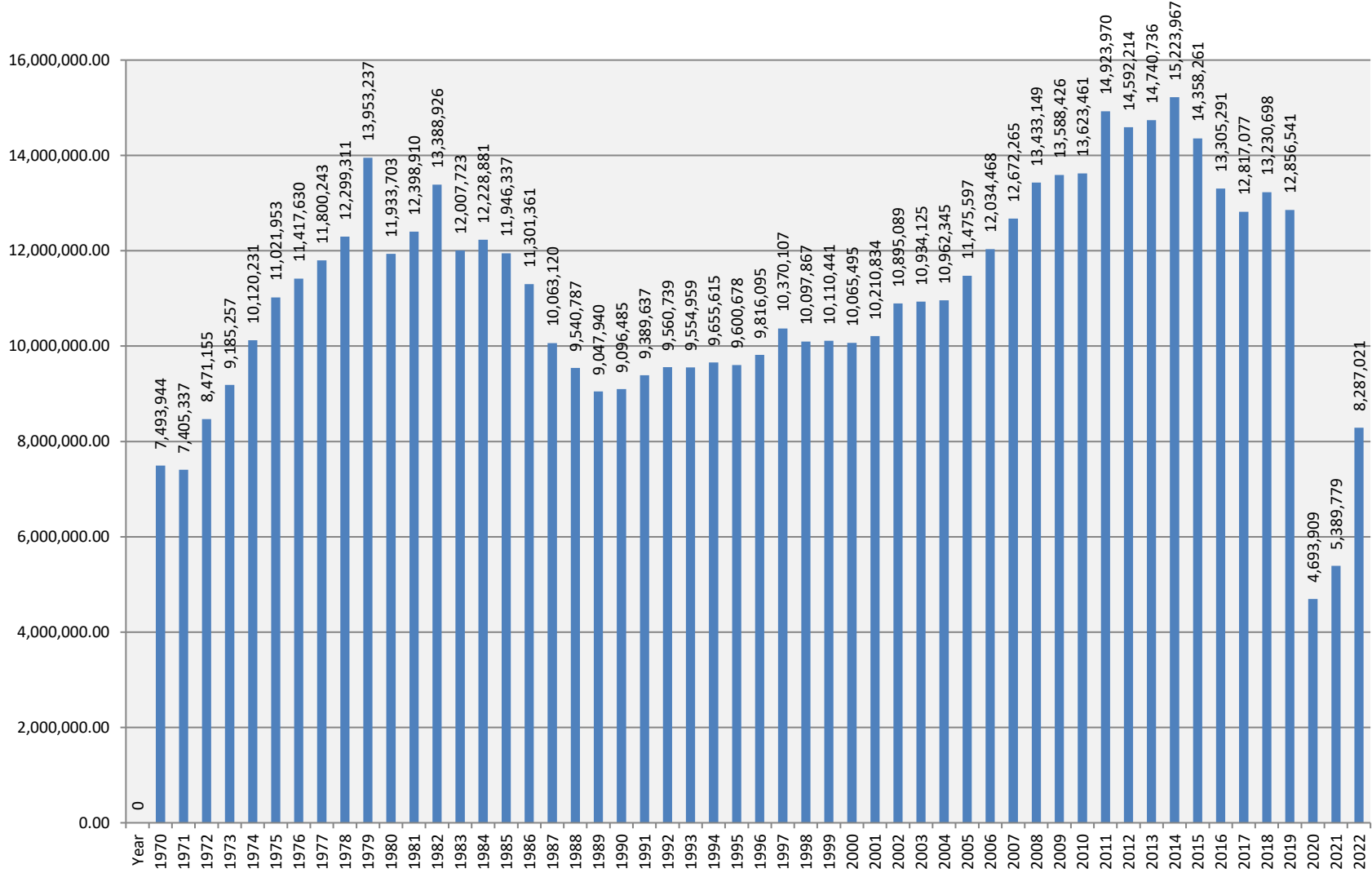




Annual Fixed Route Ridership 1970-2022



Year	Annual Boardings
1970	7,493,944
1971	7,405,337
1972	8,471,155
1973	9,185,257
1974	10,120,231
1975	11,021,953
1976	11,417,630
1977	11,800,243
1978	12,299,311
1979	13,953,237
1980	11,933,703
1981	12,398,910
1982	13,388,926
1983	12,007,723
1984	12,228,881
1985	11,946,337
1986	11,301,361
1987	10,063,120
1988	9,540,787
1989	9,047,940
1990	9,096,485
1991	9,389,637
1992	9,560,739
1993	9,554,959
1994	9,655,615
1995	9,600,678
1996	9,816,095
1997	10,370,107
1998	10,097,867
1999	10,110,441
2000	10,065,495
2001	10,210,834
2002	10,895,089
2003	10,934,125
2004	10,962,345
2005	11,475,597
2006	12,034,468
2007	12,672,265

2008	13,433,149
------	------------

2009	13,588,426
2010	13,623,461
2011	14,923,970
2012	14,592,214
2013	14,740,736
2014	15,223,967
2015	14,358,261
2016	13,305,291
2017	12,817,077
2018	13,230,698
2019	12,856,541
2020	4,693,909
2021	5,389,779
2022	8,287,021