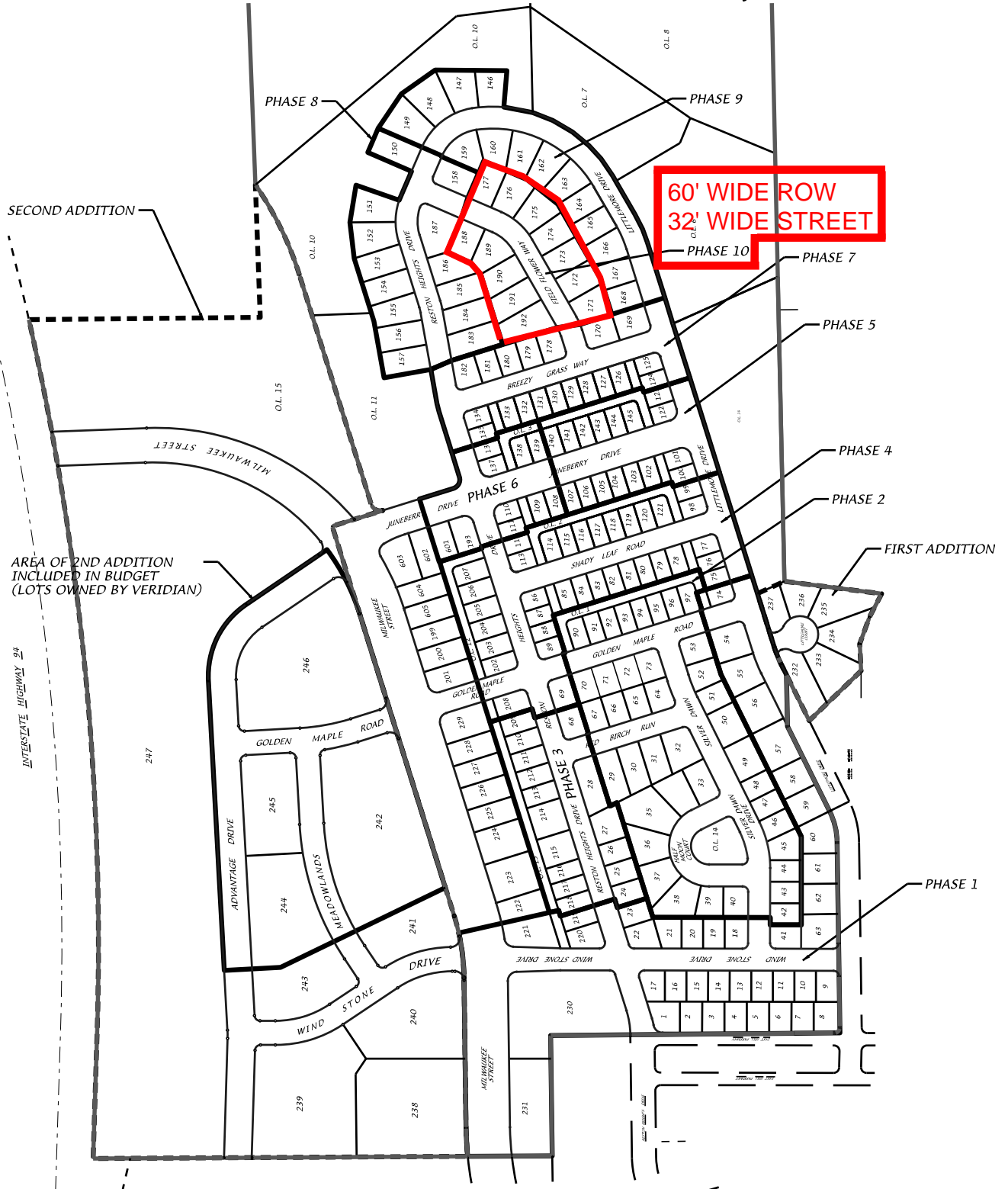


The Meadowlands - Phase Map



**60' WIDE ROW
32' WIDE STREET**

SECOND ADDITION

AREA OF 2ND ADDITION INCLUDED IN BUDGET (LOTS OWNED BY VERIDIAN)

INTERSTATE HIGHWAY 24



D'ONOFRIO KOTKE AND ASSOCIATES, INC.

7530 Westward Way, Madison, WI 53717
Phone: 608.833.7530 • Fax: 608.833.1089

YOUR NATURAL RESOURCE FOR LAND DEVELOPMENT



0 400

Scale 1" = 400'

DATE: 10-21-16

F.N.: 14-05-121

REV:

DRAWN BY:

U:/USER/0207118/DRAWINGS/Phase Map.DGN