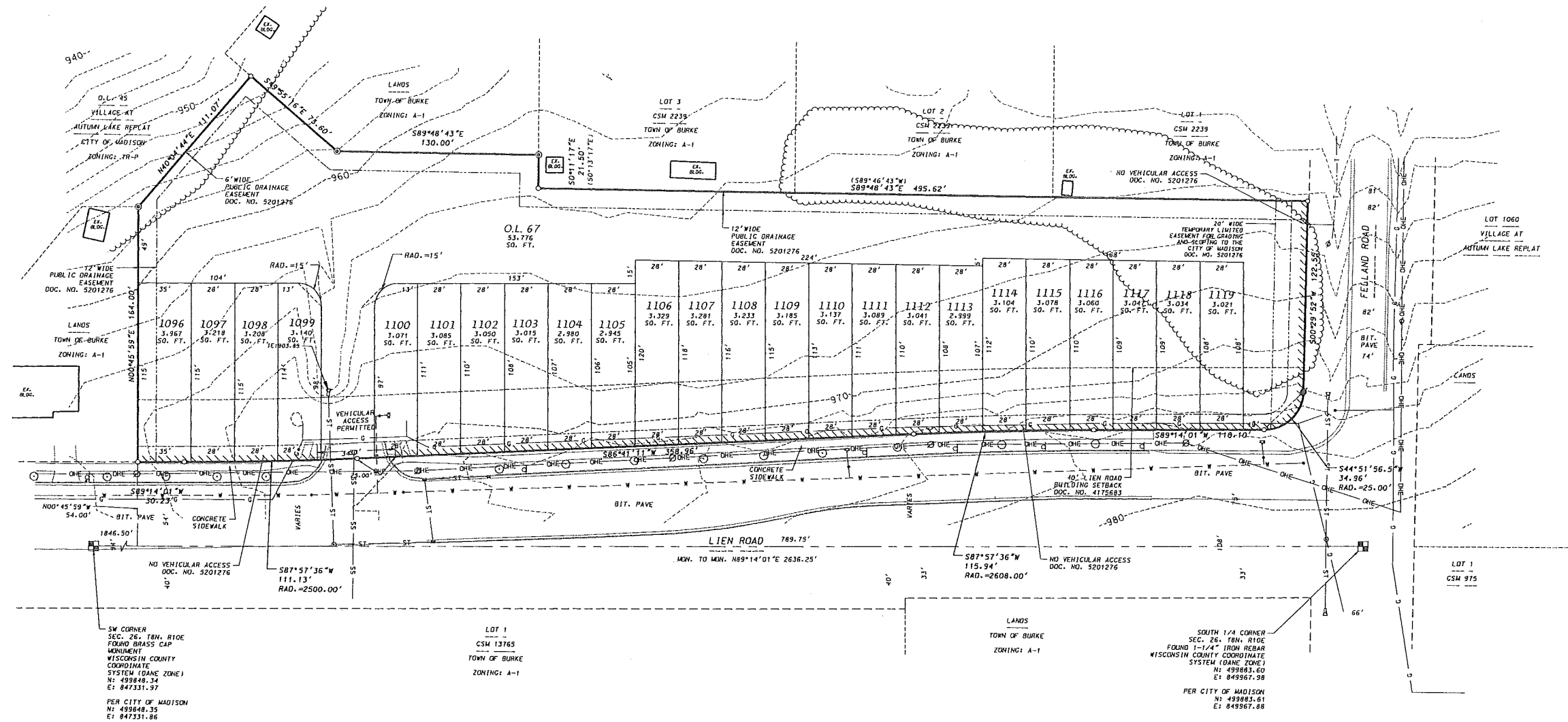


VILLAGE AT AUTUMN LAKE REPLAT NO. 3 - PRELIMINARY PLAT

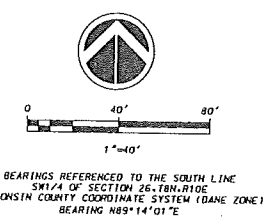
LOT 649, VILLAGE AT AUTUMN LAKE REPLAT
 LOCATED IN THE SE1/4 OF THE SW1/4 OF SECTION 26, T8N, R10E
 CITY OF MADISON, DANE COUNTY, WISCONSIN



SW CORNER
 SEC. 26, T8N, R10E
 FOUND BRASS CAP
 MONUMENT
 WISCONSIN COUNTY
 COORDINATE
 SYSTEM (DANE ZONE)
 N: 499849.34
 E: 847331.87
 PER CITY OF MADISON
 N: 499848.35
 E: 847331.86

LOT 1
 CSM 13765
 TOWN OF BURKE
 ZONING: A-1

SOUTH 1/4 CORNER
 SEC. 26, T8N, R10E
 FOUND 1-1/4" IRON REBAR
 WISCONSIN COUNTY COORDINATE
 SYSTEM (DANE ZONE)
 N: 499883.60
 E: 849867.98
 PER CITY OF MADISON
 N: 499883.61
 E: 849867.88



SURVEYOR'S CERTIFICATE
 I, Brett T. Stoffregan, Professional Land Surveyor, S-2742, hereby certify that this preliminary plat is a true and correct representation of all the adjacent existing land divisions and of the boundary of the preliminary plat and features and that I have fully complied with the City of Madison Subdivision Ordinance.
 Dated this 4th day of April, 2018.
Brett T. Stoffregan
 Brett T. Stoffregan, Professional Land Surveyor, S-2742

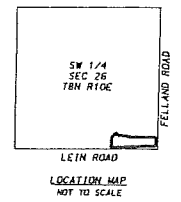


NOTES
 1. Existing Zoning: TR-P
 2. OWNER & SUBDIVIDER: DAI Investments, LLC, 7813 Cobblestone Cir, Middleton, WI 53562

LAND PLANNER
 Vandavilla Associates, Inc., 120 East Lakeside, Madison, WI 53715

LEGEND

○	PLACED 1-1/4"x18" IRON REBAR
⊗	FOUND 1-1/4"x18" IRON REBAR
⊖	FOUND 1" IRON PIPE
---	UNDERGROUND ELECTRIC
---	SANITARY SEWER
---	WATER MAIN
---	GAS MAIN
---	OVERHEAD ELECTRIC
---	STORM SEWER
○	MANHOLE
⊖	CATCH BASIN/INLET
⊕	POWER POLE
⊗	VALVE
⊕	HYDRANT
⊖	SIGN
---	CONCRETE CURB AND GUTTER
---	EXISTING CONTOUR
○	TREE



BROFFERUS BUSTKE AND ASSOCIATES, INC.
 7530 Westwood Way, Madison, WI 53717
 Phone: 608.833.7530 • Fax: 608.833.1089
 YOUR NATURAL RESOURCE FOR LAND DEVELOPMENT FH:18-07-106