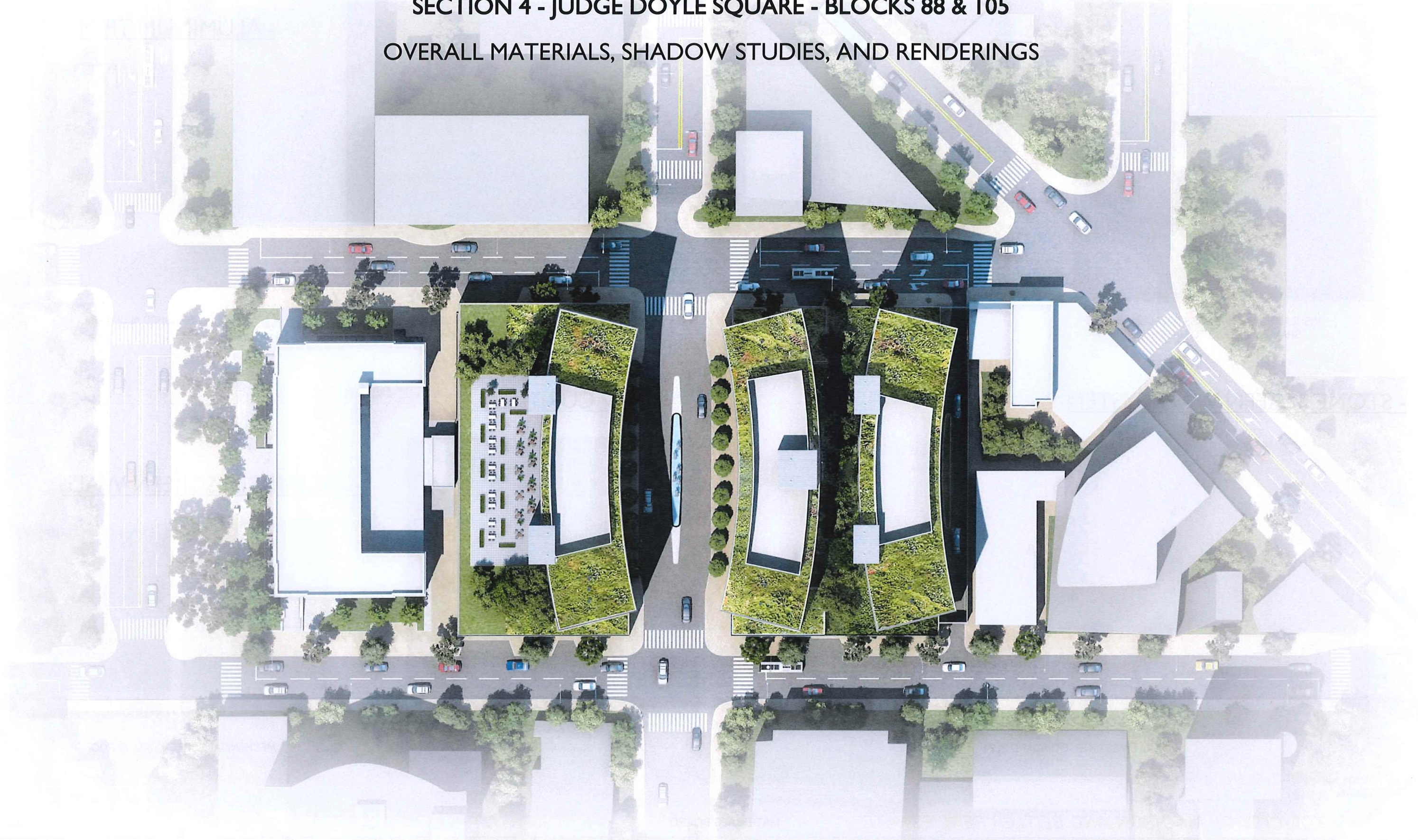
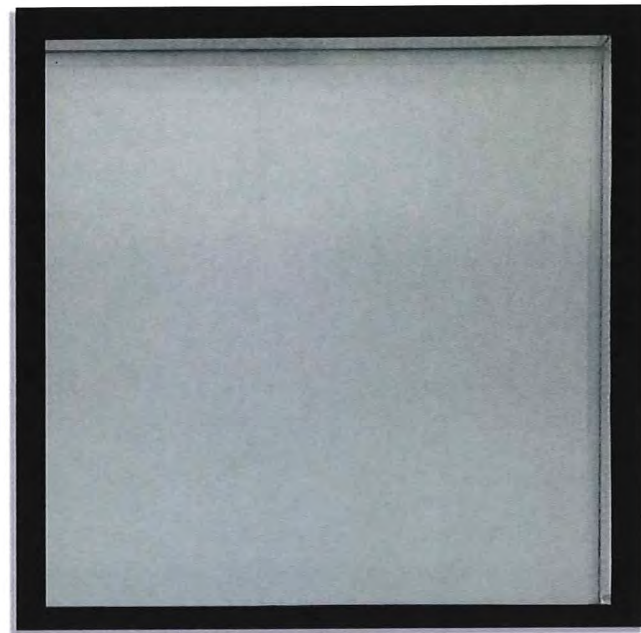


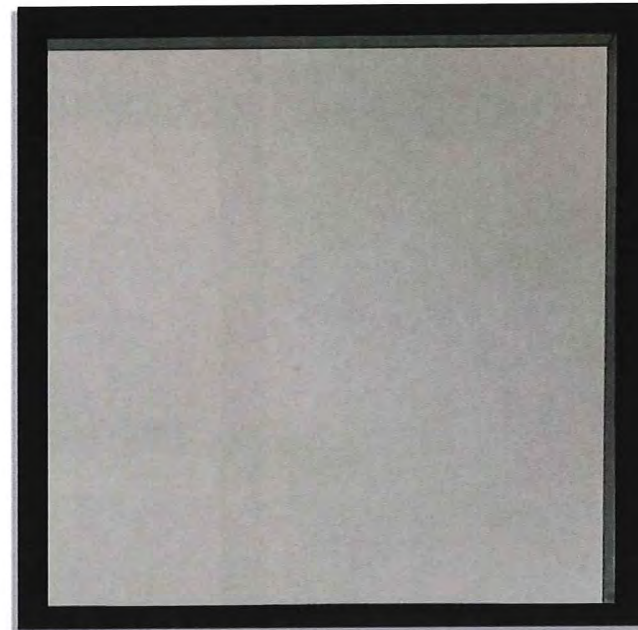
**SECTION 4 - JUDGE DOYLE SQUARE - BLOCKS 88 & 105**  
**OVERALL MATERIALS, SHADOW STUDIES, AND RENDERINGS**



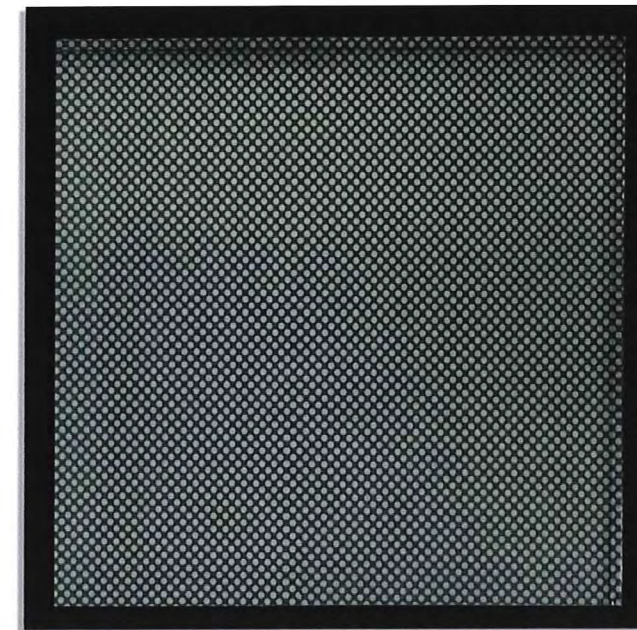
- EXTERIOR GLAZING



INSULATING VISION GLASS (VRE1-46)  
SPANDREL GLASS TO MATCH



FROSTED GLASS - FOG GRAY (V1087)



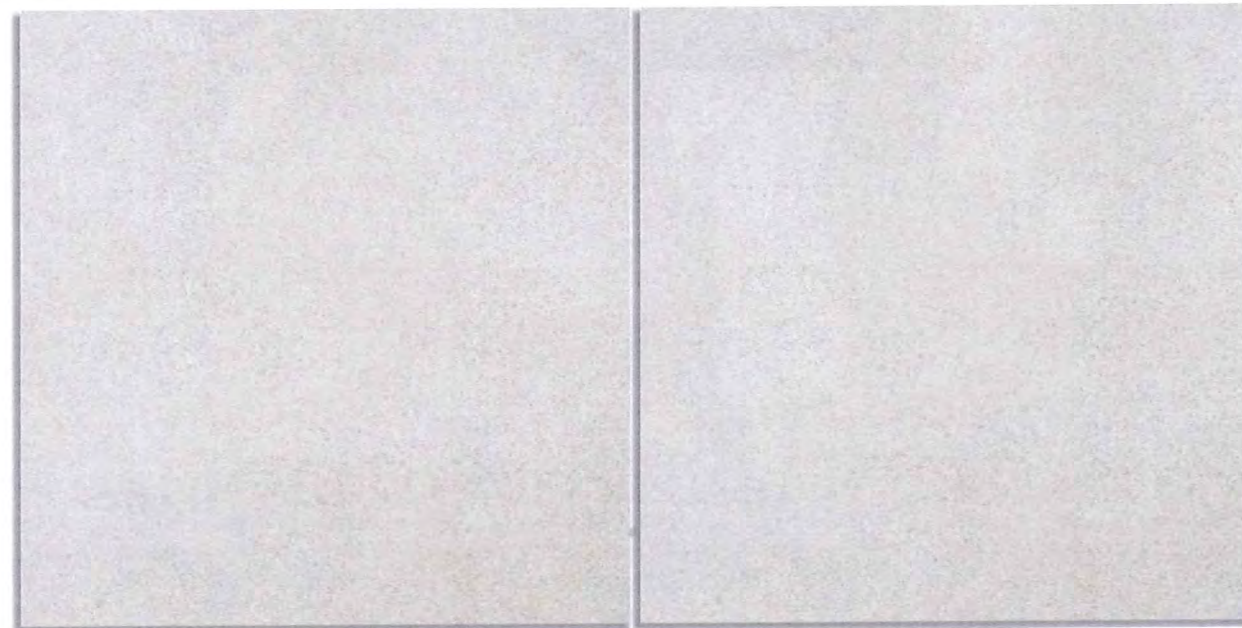
SILKSCREEN GLASS - SUBDUED GRAY  
60% COVERAGE (V903)

- ALUMINUM TRIM



BRUSHED ALUMINUM

- STONE SCREEN WALL SYSTEM



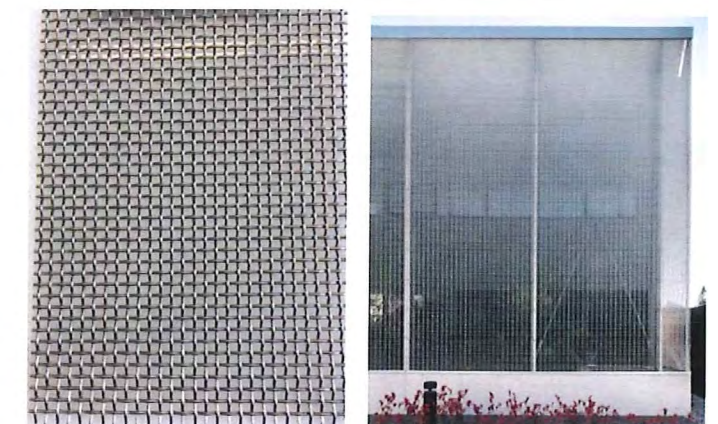
INDIANA LIMESTONE - STANDARD BUFF

- WINDOW CURB / SILL

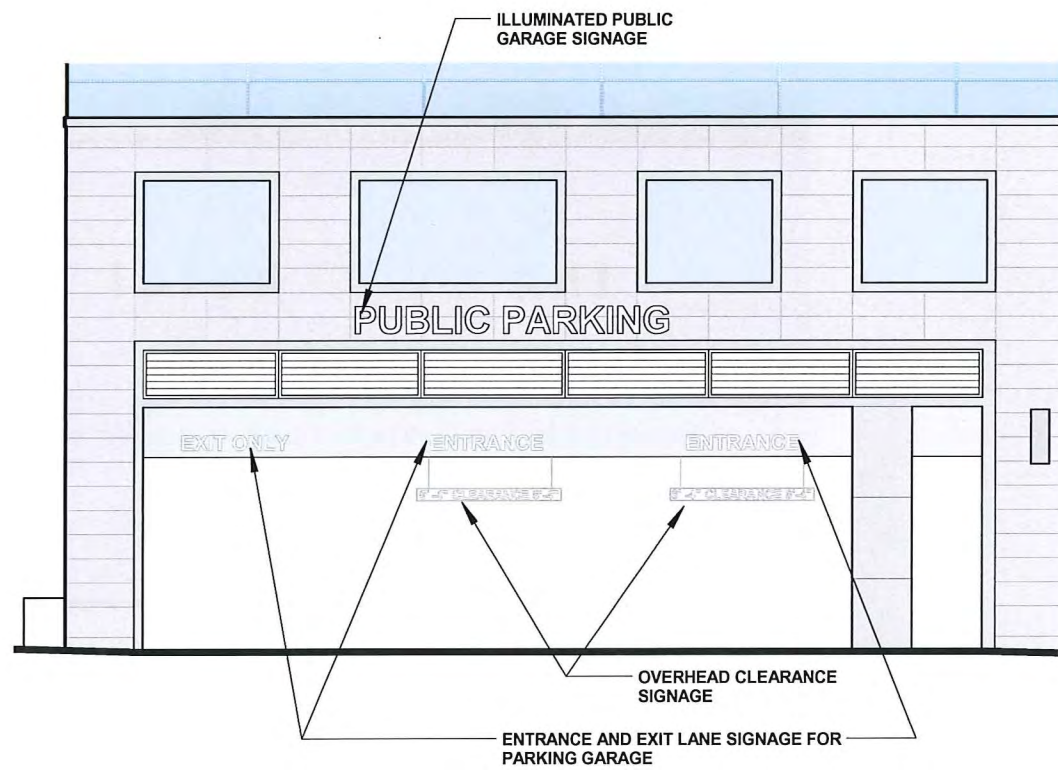


BLACK GRANITE

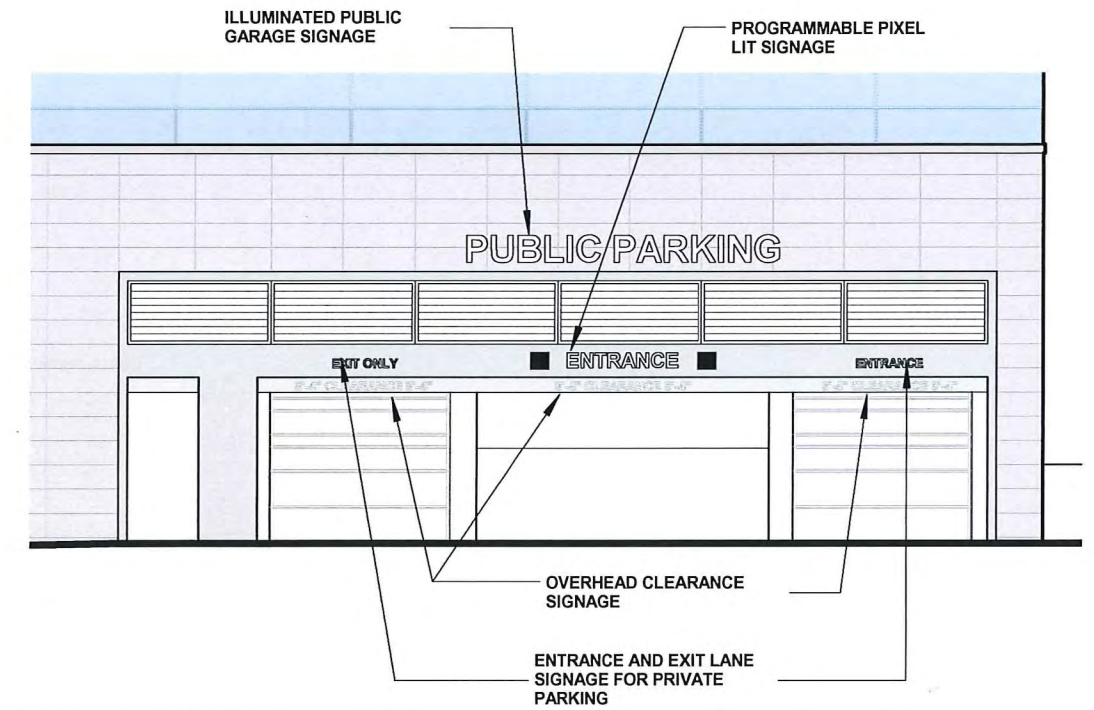
- ALUMINUM SCREEN WALL



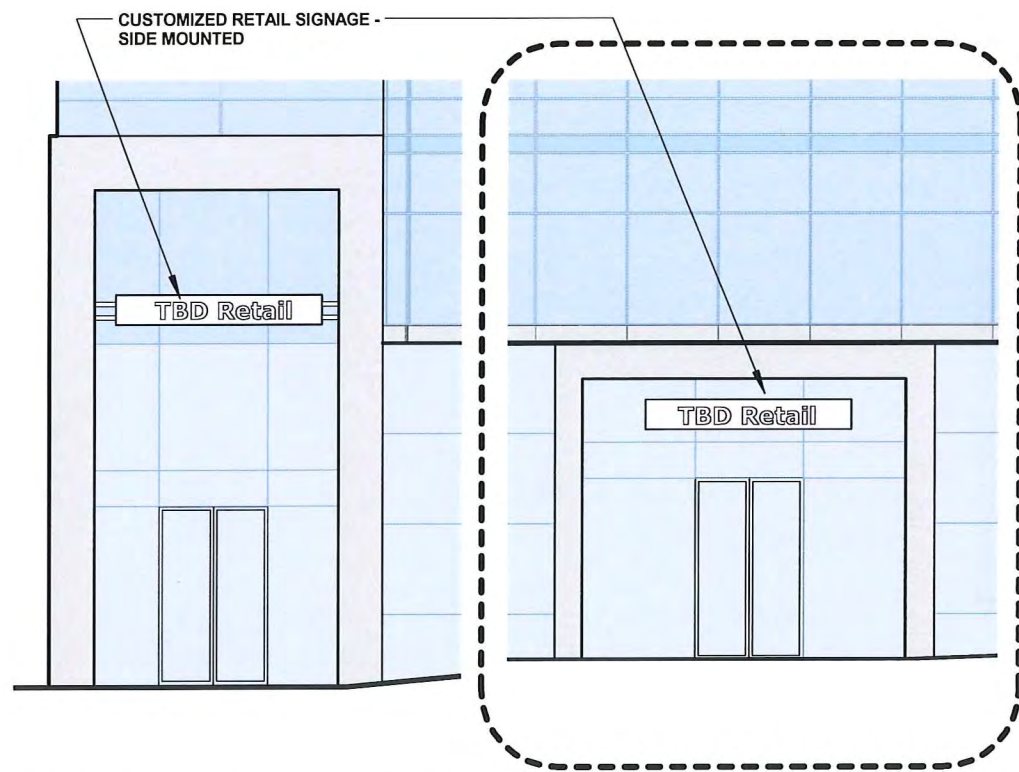
MECHANICAL SCREEN WALL @ ROOF



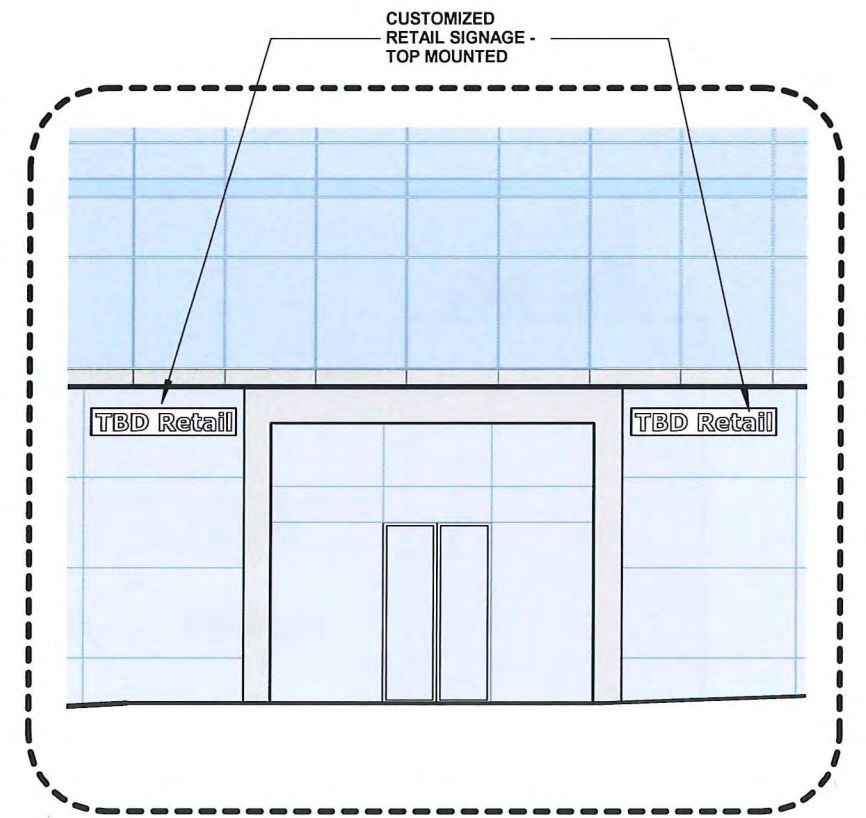
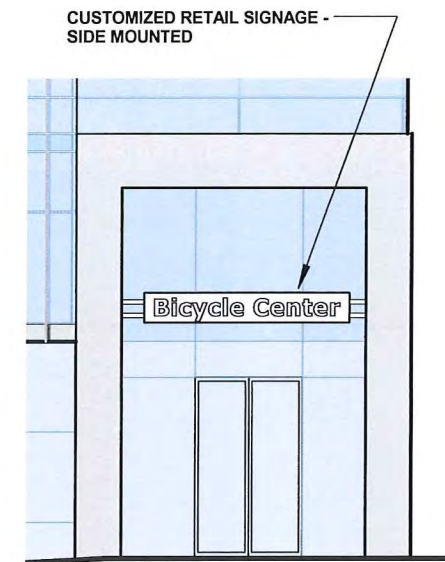
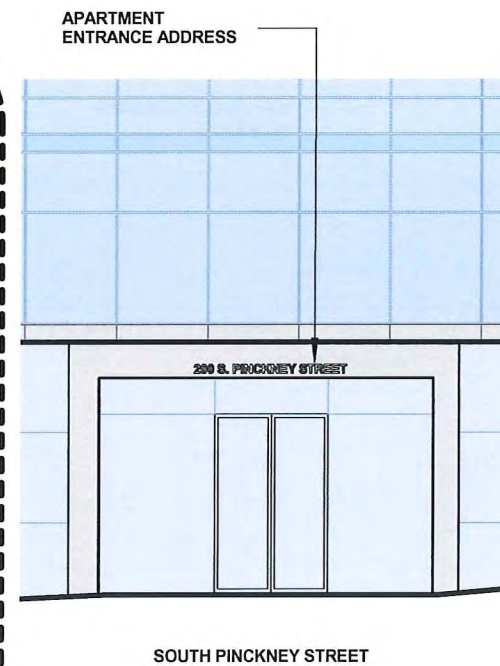
WILSON STREET GRAPHIC SIGNAGE



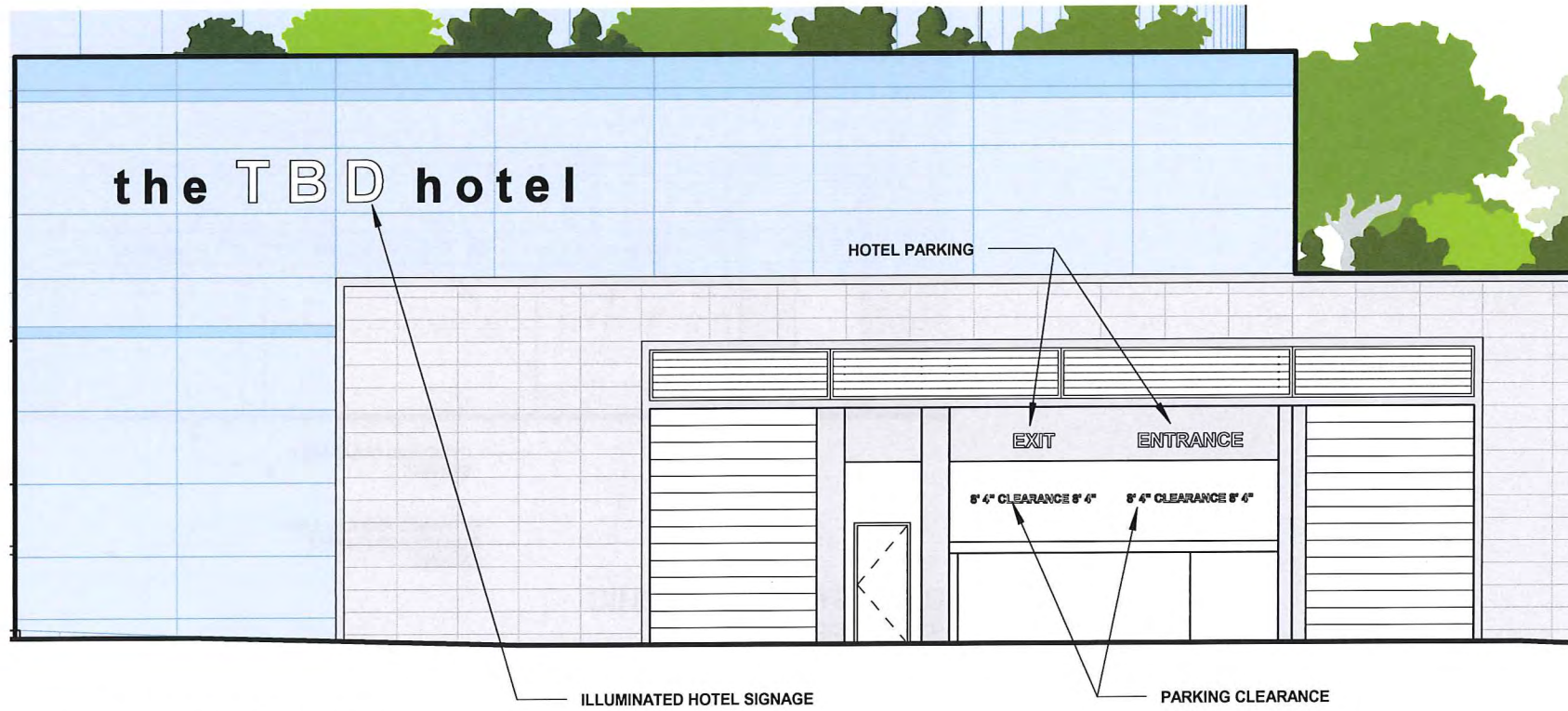
DOTY STREET GRAPHIC SIGNAGE



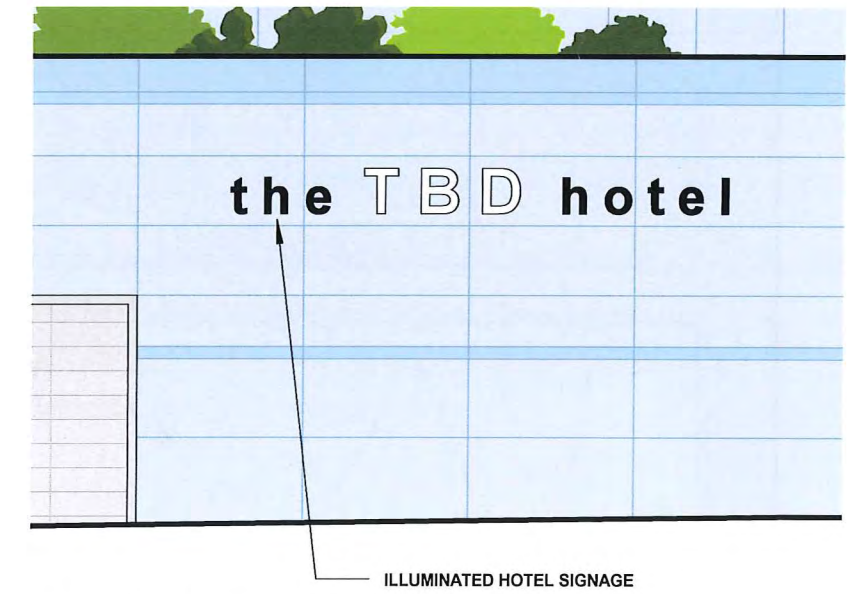
PINCKNEY STREET GRAPHIC SIGNAGE



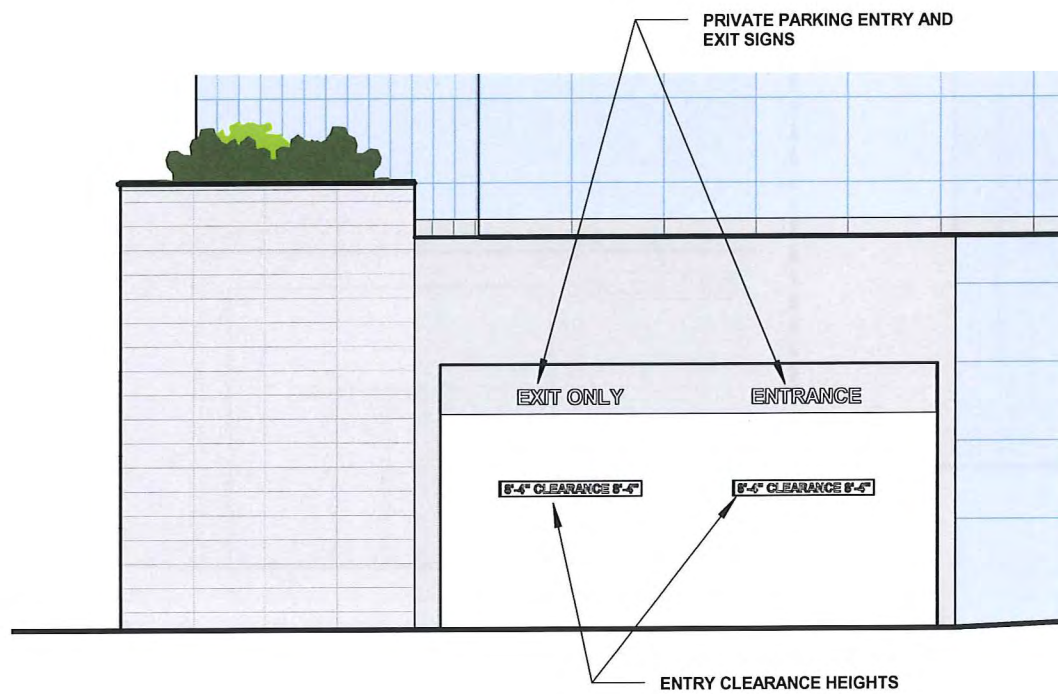
OPTION B



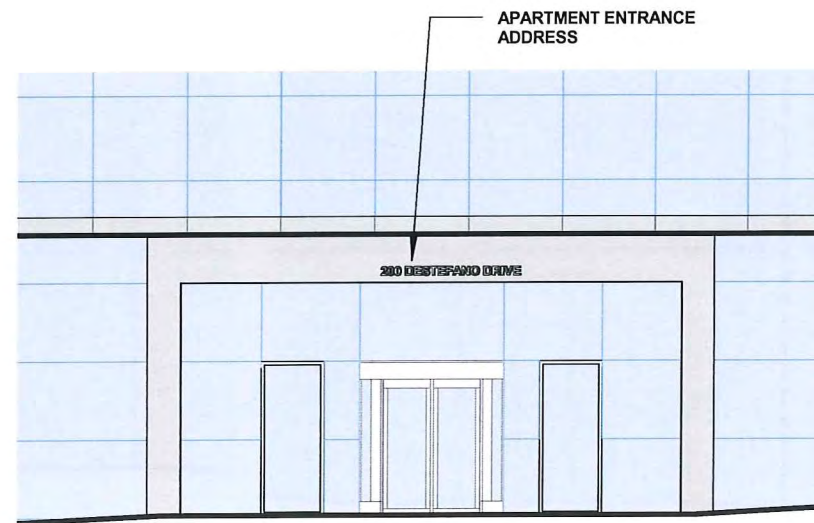
WILSON STREET GRAPHIC SIGNAGE

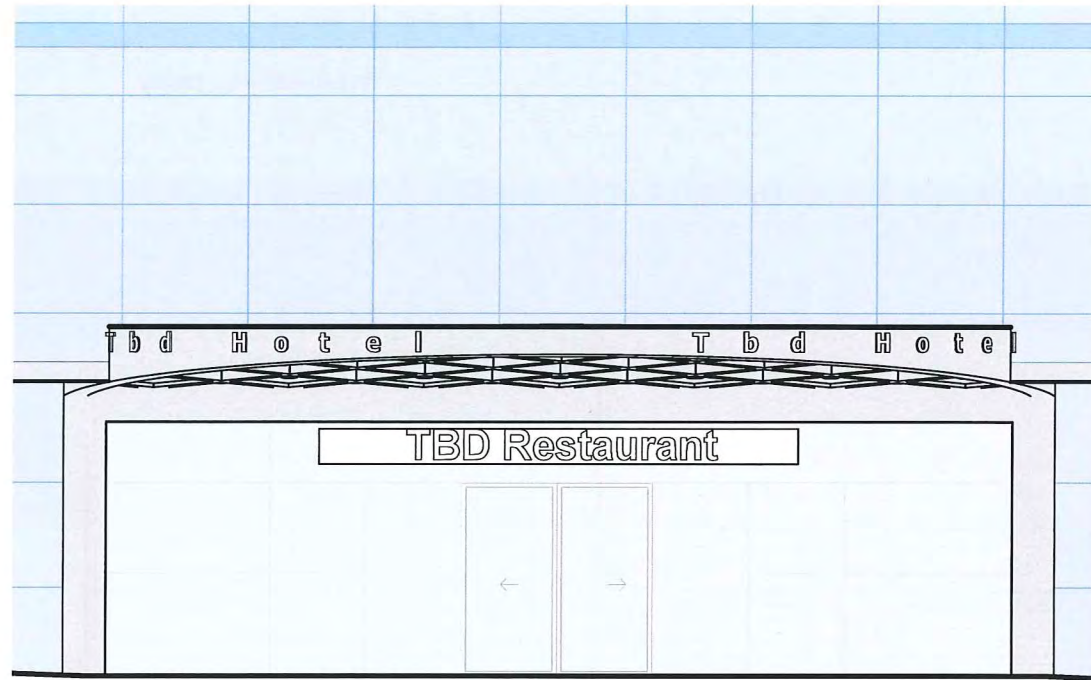


DOTY STREET GRAPHIC SIGNAGE

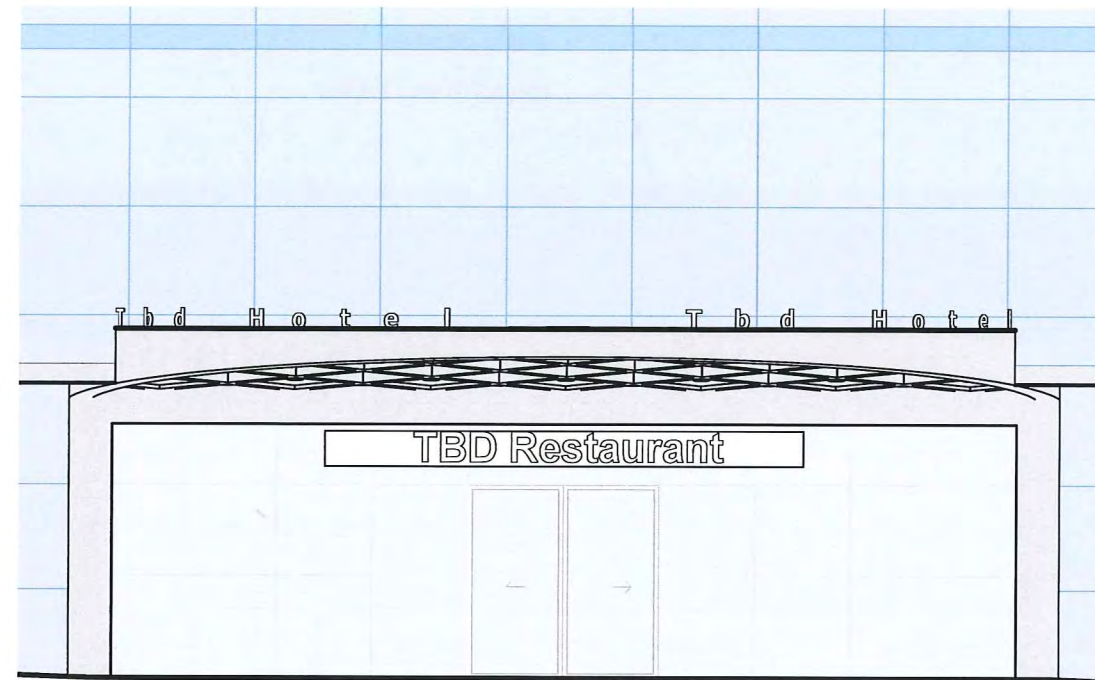


NEW ENTRY GRAPHIC SIGNAGE

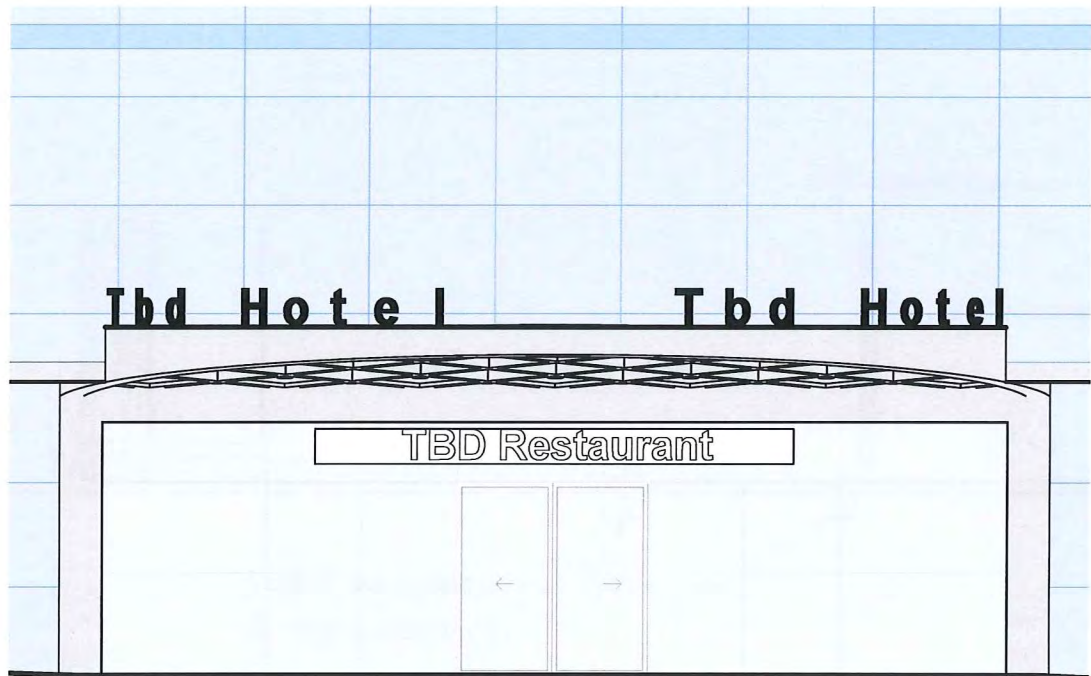




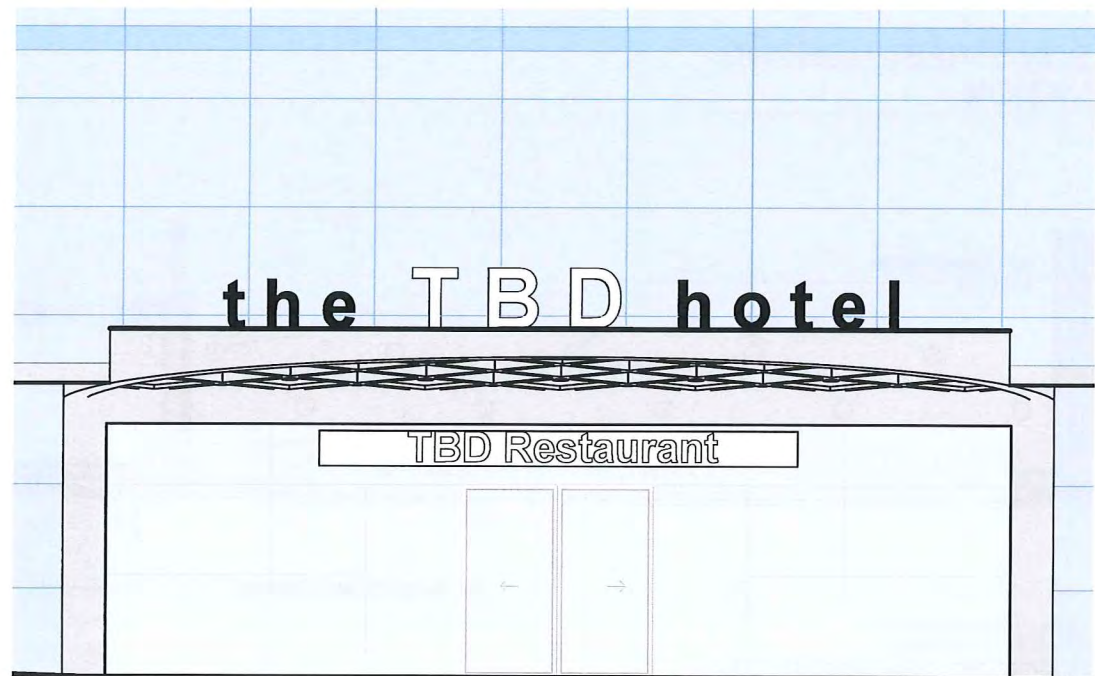
PINCKNEY STREET CANOPY  
SIGNAGE OPT A



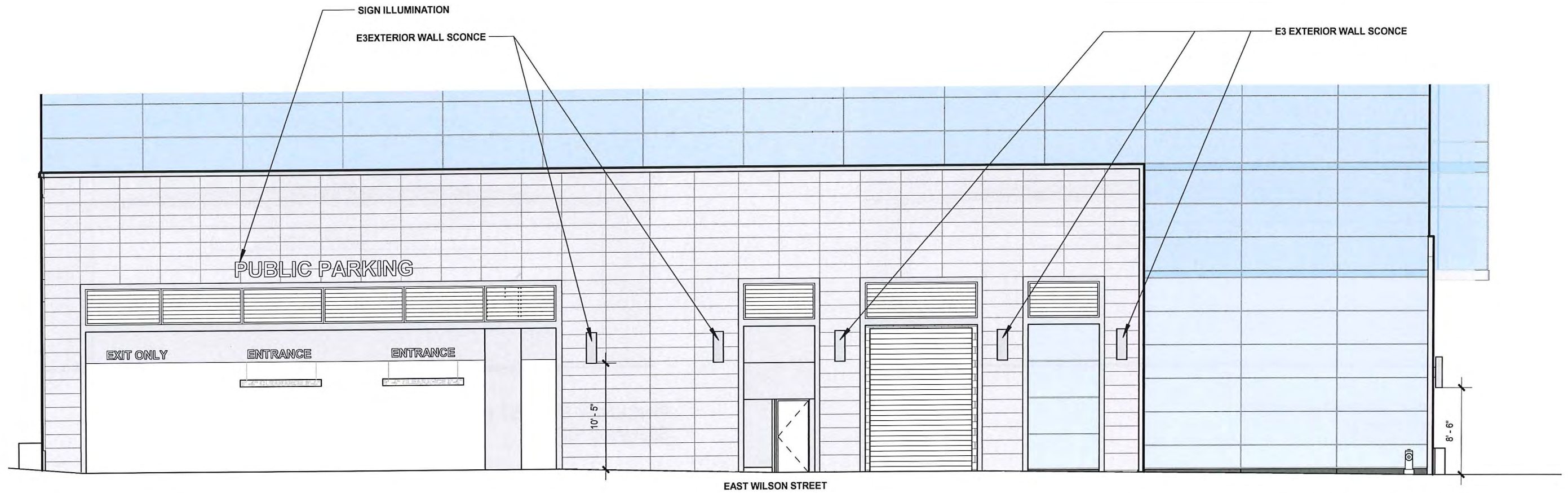
PINCKNEY STREET CANOPY  
SIGNAGE OPT B



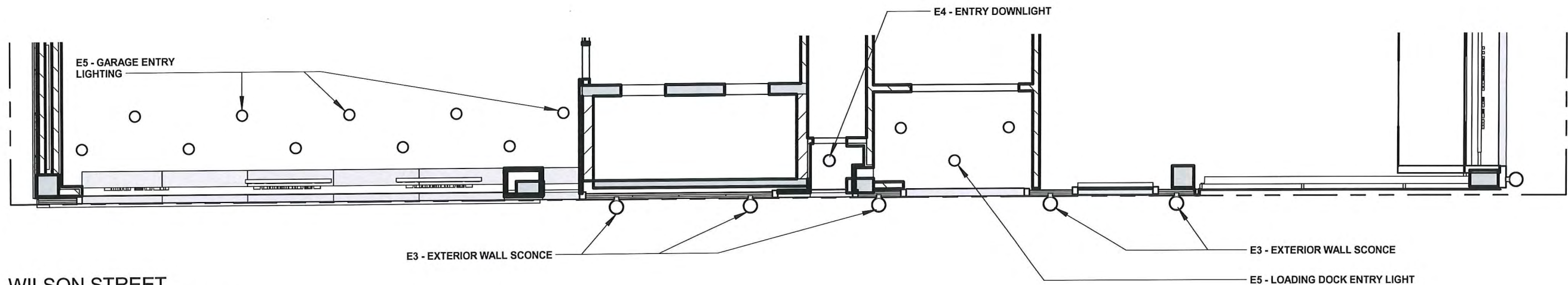
PINCKNEY STREET CANOPY  
SIGNAGE OPT C



PINCKNEY STREET CANOPY  
SIGNAGE OPT D

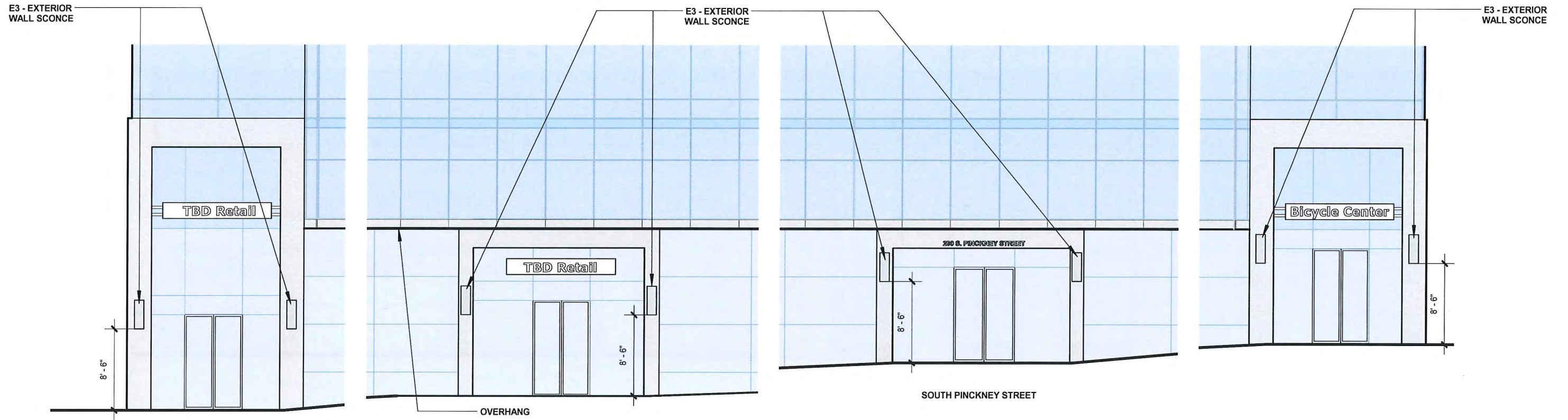


WILSON STREET LIGHTING  
ELEVATION

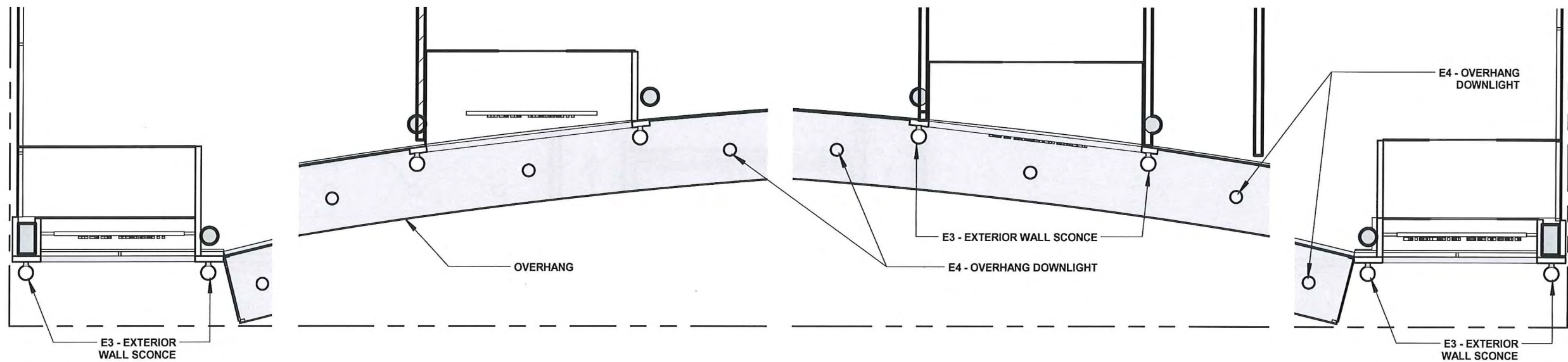


WILSON STREET  
REFLECTED CEILING PLAN



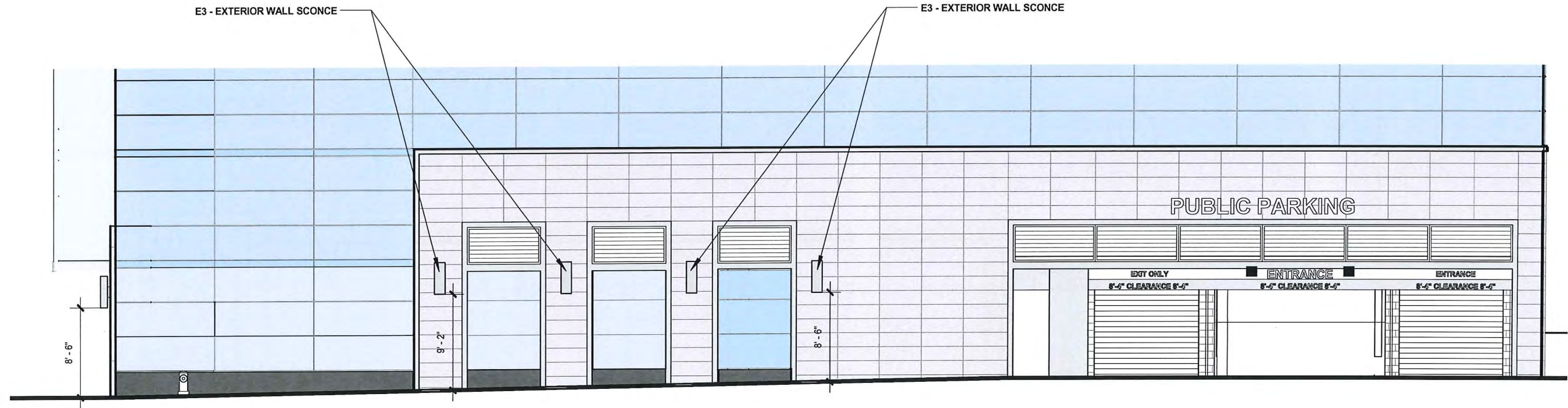


PINCKNEY STREET  
LIGHTING ELEVATION

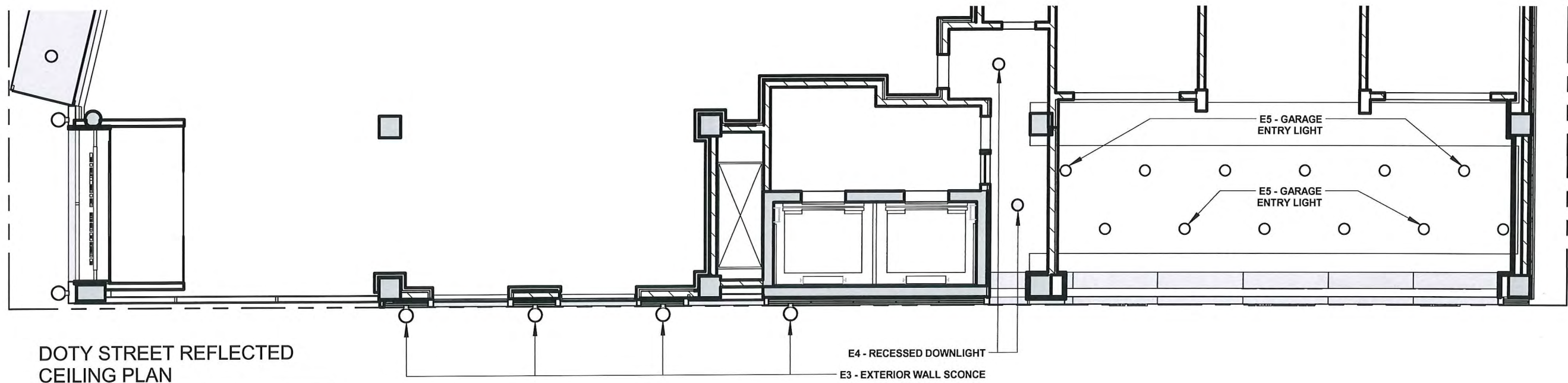


PINCKNEY STREET  
REFLECTED CEILING PLAN





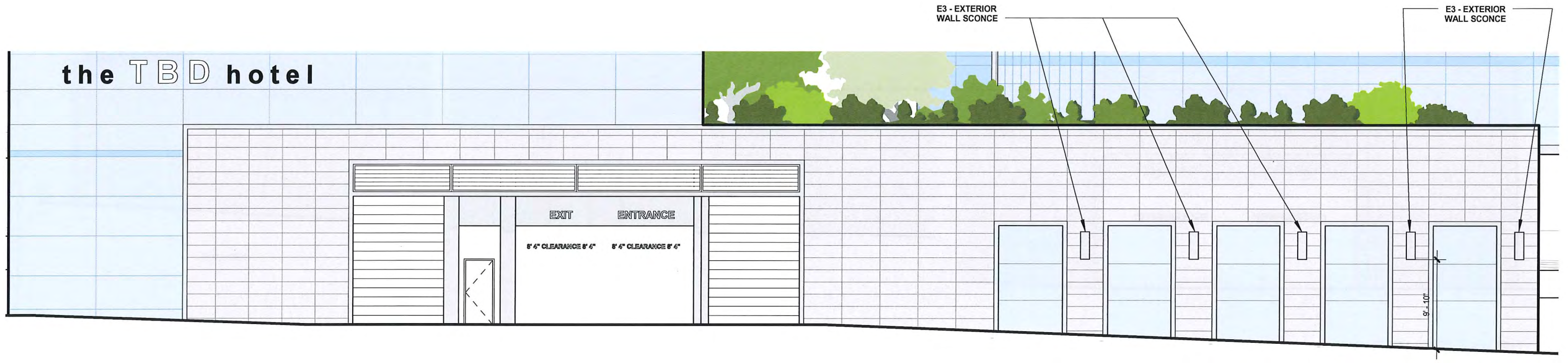
DOTY STREET LIGHTING  
ELEVATION



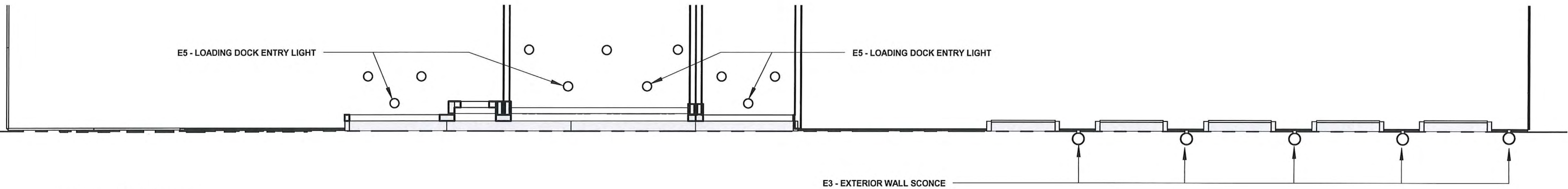
DOTY STREET REFLECTED  
CEILING PLAN



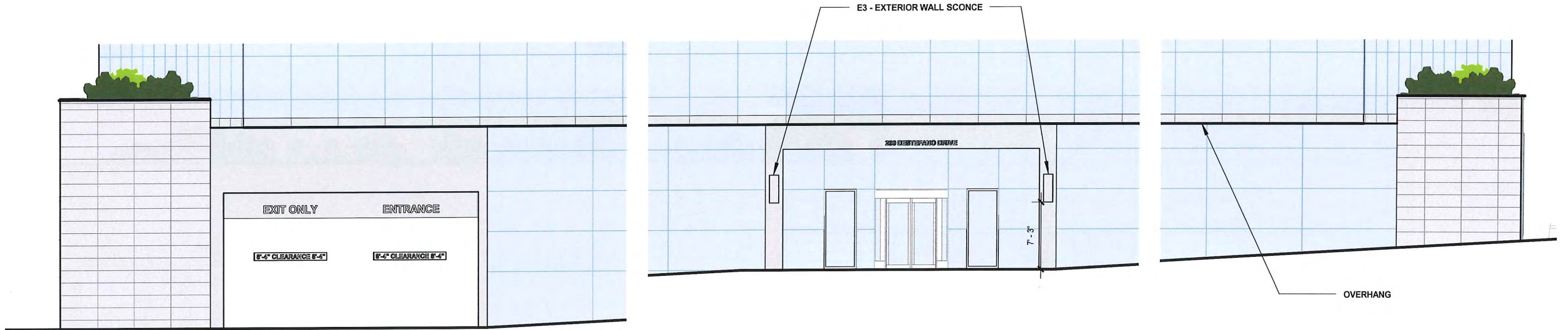




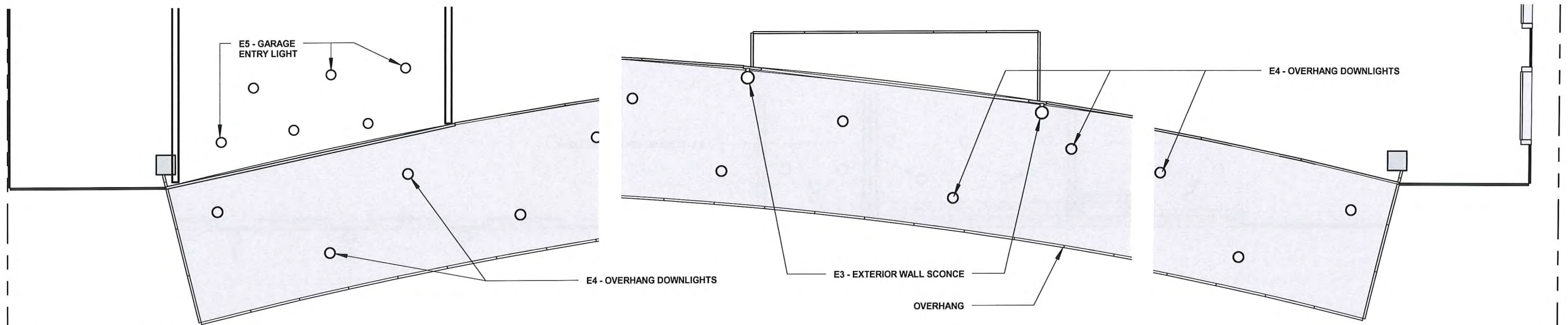
WILSON STREET LIGHTING  
ELEVATION



WILSON STREET  
REFLECTED CEILING PLAN

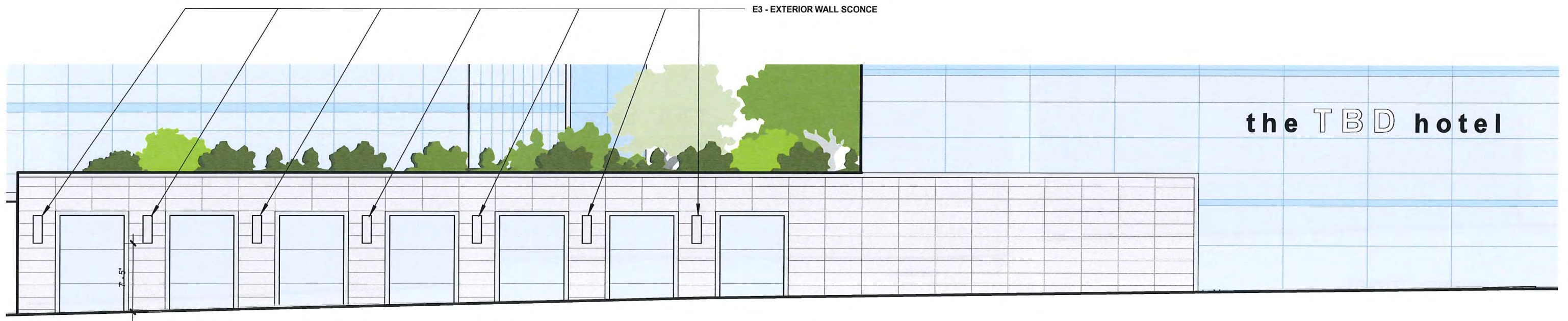


NEW ENTRY LIGHTING  
ELEVATION

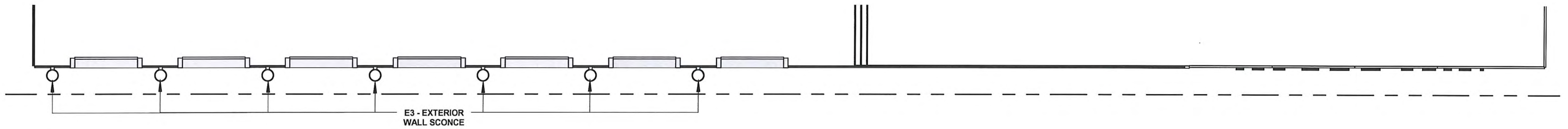


NEW ENTRY REFLECTED  
CEILING PLAN

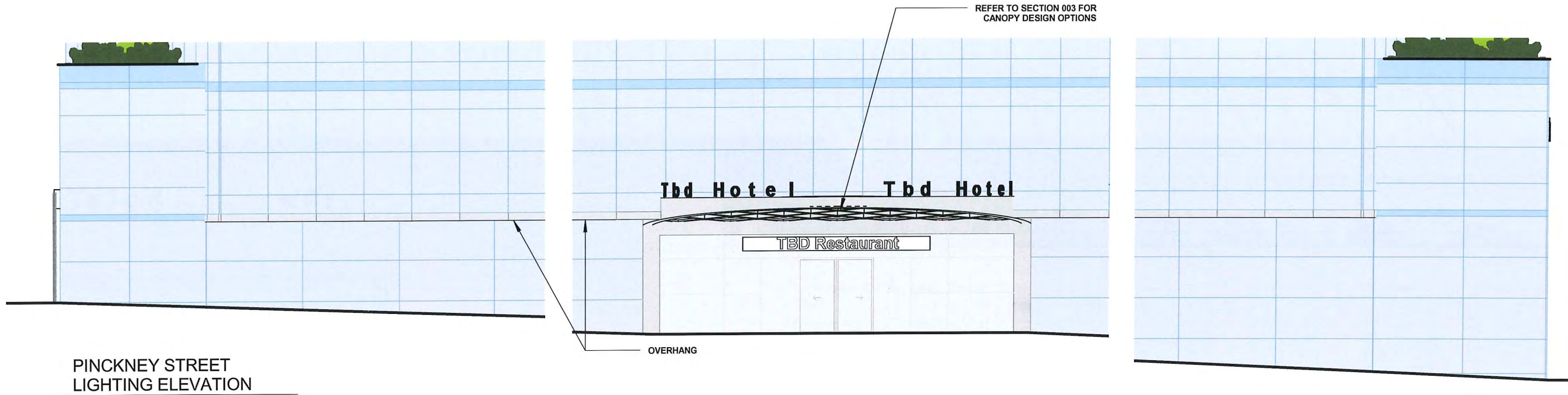




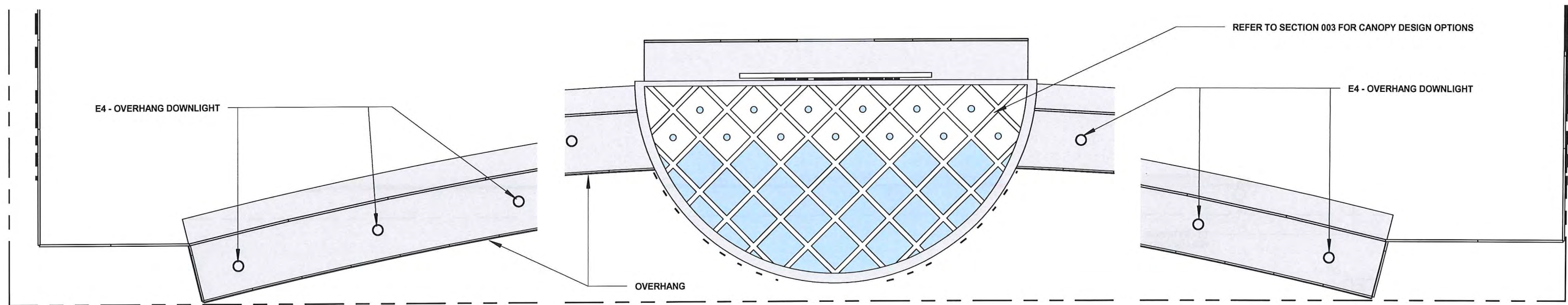
DOTY STREET LIGHTING  
ELEVATION



DOTY STREET REFLECTED  
CEILING PLAN



PINCKNEY STREET  
LIGHTING ELEVATION



PINCKNEY STREET  
REFLECTED CEILING PLAN



# E1 - FOUNTAIN LIGHTING



**LTV8SS**  
Lightvault® 8 Stainless Steel  
kl\_ltv8ss\_spec.pdf

JOB \_\_\_\_\_ TYPE \_\_\_\_\_  
NOTES \_\_\_\_\_ APPROVALS \_\_\_\_\_

### FEATURES

- Sealed IP68 LED light engine
- Bluetooth connectivity for remote control aiming and dimming
- Free Mobile App for Android and iOS
- Easy to install and pair devices
- Advanced thermal management provides long life in excess of 100,000+ hours
- Runs cool to the touch - less than 40°C

### Certifications



### SPECIFICATIONS



Four Box rough-in housing ships separately and as a quick-ship if requested



### LTV82SS



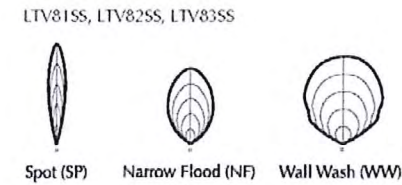
### LTV83SS



### DEBRIS SHIELDS



### LIGHT DISTRIBUTIONS:



### ORDERING CODE

Fixture Size	Distribution*	Source	Electrical Module	Lens Options <sup>1</sup>	Rebar Cage Anchor
LTV81SS 13" Dia.	SP, NF, WW	36L 36 LEDs	Color Temperature: 3K 3000K, 4K 4000K, 5K 5000K Voltages: UV 120-277V	SR Slip-Resistant Lens PL Prismatic Lens	RCA81 for LTV81 RCA82 for LTV82 RCA83 for LTV83
LTV82SS 10-3/8" Dia.	SP, NF	18L 18 LEDs			
LTV82SS 10-3/8" Dia.	WW	16L 16 LEDs			
LTV83SS 7-15/16" Dia.	SP, NF, WW	12L 12 LEDs			

\* SP = Spot, NF = Narrow Flood, WW = Wall Wash

Kim Lighting reserves the right to change specifications without notice

© 2016 KIM LIGHTING | 16555 East Gale Ave | City of Industry | CA 91745  
P 626 968 5000 | F 626 369 2035 | www.kimlighting.com | Rev. Aug. 6, 2016



1 | 1

# E2 - BOLLARDS



Date: \_\_\_\_\_ Approved: \_\_\_\_\_  
Type: \_\_\_\_\_  
Fixture: \_\_\_\_\_  
Project: \_\_\_\_\_

### FCB460

Exterior 316 stainless steel bollard.



### ORDERING

EXAMPLE: FCB460-120V-4K-2000-SS-D

SERIES	VOLTAGE	SOURCE/TEMPERATURE/LAMP	FINISH	ACCESSORIES
FCB460	120V	PL 26T 32T	SS Stainless Steel	D Dimming 0-10V
	277V	HID 50W MH 70W MH		LD LED Dim 0-10V
	347V <sup>Δ</sup>	100W MH		PE Photo Eye
		LED 3K 500 Lumens (35W)		
		35K		
		4K		

<sup>Δ</sup> contact factory

### SPECIFICATION

#### MOUNTING

- A thick die-cast base plate is provided and anchored through with a set of three 12" length x 3/8" diameter hot dipped anchor bolts. Heavy gauge base bracketing for bollard installation.
- Installation: <http://tinyurl.com/jthbwx>

#### CONSTRUCTION

- Marine grade 316 stainless steel housing.
- Impact resistant, UV stabilized, clear, polycarbonate diffuser.
- Neoprene continuous closed cell gasket to seal out contaminants. Captive and recessed stainless steel, tamper resistant hex socket screws.

#### LED

- Lumens stated are the minimum delivered out of the luminaire. LED lifetime is greater than or equal to 70,000 hours with the lumen depreciation greater than L70. All of our luminaires are LM-80 tested and are ≥ CRI80, with a 4-step MacAdam Ellipse color consistency. Integral power supply standard. Input voltage 120V or 277V standard.

#### FINISH

- Brushed stainless steel finish.

#### ELECTRICAL

- Socket PL: Four pin plug-in type compact fluorescent lamp holder. HID: Medium base pulse rated 4KV porcelain socket.
- Ballast PL: Fluorescent high power factor electronic, UL listed ballast standard. HID: Electronic ballast standard. Ballast has a manufacturer issued 5 year warranty. Electronic voltage 120V or 277V is standard. Please consult factory for other voltage options.

#### LISTING

- UL & cUL/ETL, U.S. and CA listed for wet locations. IP65 rating.

FC Lighting, Inc. reserves the right to change details or specifications without notice. Product use certifies agreement to FC Lighting's terms and conditions.

© 2016 FC Lighting, Inc. 3699 Swenson Ave., St. Charles, IL 60174 p. 800-900-1730 t. 630-889-8106 www.fcighting.com

AK Rev. 716

### E3 - EXTERIOR WALL SCONCE



Date: \_\_\_\_\_ Approved: \_\_\_\_\_  
 Type: \_\_\_\_\_  
 Fixture: \_\_\_\_\_  
 Project: \_\_\_\_\_

#### FCC820

8" Round Wall Mounted Die-Cast Aluminum Cylinder, Up / Down Light



#### ORDERING

**GO GREEN SPEED** 25 pcs or Less / ships in 2 weeks\* **EXAMPLE: FCC820-120V-3K-1200-BK-D**

SERIES	VOLTAGE	SOURCE/TEMPERATURE/LAMP	FINISH	LED OPTIC DIRECTION	ACCESSORIES
FCC820	120V	PL 2/26T 2/32T 2/42T	BK Black	UP DOWN	D Dimming (0-10V)
	277V	INC 2/150W PAR38	BZ Bronze	USP Spot DSP Spot	LD LED Dimming (0-10V)
	347V	HID 2/70W MH G12	SL Silver	UNFL Narrow Flood DNFL Narrow Flood	EMR Emergency Backup, Remote
		LED 3K 1200 Lumens (15W)*	WH White	UFL Flood DFL Flood	
		4K 2000 Lumens (24w)*	CC Custom Color	UWFL Wide Flood DWFL Wide Flood	
			UNO None DNO None		

△ contact factory  
 \* Each Direction

#### SPECIFICATION

##### MOUNTING

- Mounts directly to standard recessed junction box. Additional mounting holes allow unit to be attached directly to mounting surface.

##### CONSTRUCTION

- Marine grade, corrosion resistant, heavy walled, high pressure die-cast aluminum with die-cast back mounting plate.
- Lens is 3/8" thick clear tempered glass. Precision formed semi-specular aluminum for maximum reflectance.
- Silicone gasket to provide maximum protection against contaminants. Hidden fasteners allow for cover removal to facilitate installation and services.

##### LED

- Lumens stated are the minimum delivered out of the luminaire. LED lifetime is greater than or equal to 70,000 hours with the lumen depreciation greater than L70. All of our luminaires are LM-80 tested and are > CRI80, with a 4-step MacAdam Ellipse color consistency. Integral power supply standard. Input voltage 120V or 277V standard. Consult factory for non-white static LED colors; Red, Green, Blue or Amber.

##### FINISH

- Six stage chemical pre-treatment process that includes iron phosphate, to prepare the substrate for a UV stable, super durable standard polyester powder coat.
- Optional e-coat process is added to the standard finish including zinc phosphate for a 5 year limited warranty.

##### ELECTRICAL

- Socket** PL: Four pin plug-in type compact fluorescent lamp holder (*lamp by others*). INC (120V only): Medium base porcelain socket. HID: Medium base pulse rated 4KV porcelain socket or G12 base porcelain socket.
- Ballast** PL: Fluorescent electronic, UL listed ballast standard. HID: Electronic ballast standard. Ballast has a manufacturer issued 5 year warranty. Please consult factory for other voltage options.

##### LISTING

- UL & cUL listed for wet location. IP65 Rating.

\* Terms & Conditions for our Go Green Speed, quick ship program are located on our website: [fclighting.com](http://fclighting.com)

FCLighting, Inc. reserves the right to change, without notice, details or specifications in product design. Product use certifies agreement to FCLighting's terms and conditions.

© 2016 FCLighting, Inc. 3609 Swenson Ave., St. Charles, IL 60174 p. 800-900-1730 f. 630-509-8106 www.fclighting.com

MT Rev. 615

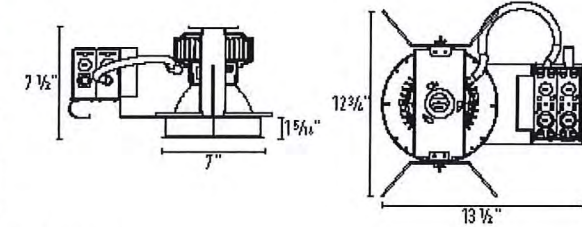
### E4 - OVERHANG DOWNLIGHTS

#### SS6G2 / IC632

6" LED General Illumination / Regressed Lensed Reflector



JOB NAME	CATALOG NUMBER
NOTES	TYPE



Cut-out: 8 1/2"

Order Matrix | Example: SS6G22000308-27-EM

A	B	C	D	E
<b>A</b> Series	SS6G2	<b>C</b> Color Temperature / CRI	<b>D</b> Dimming	<b>E</b> Voltage
6" LED Recessed Round	1100 1500 2000 3000 Lumen	2700K / 80 CRI 3000K / 80 CRI 3500K / 80 CRI 4000K / 80 CRI	blank 0-10V Dimming 10% -D1 0V1 0-10V Dimming 1% -ED10V1 d/dLED 0-10V 1% <sup>1</sup> -ED10V01 d/dLED 0-10V 0.1% <sup>1</sup> -LU T1 Lutron Hi-Lume 1% -LUT Lutron EcoSystem 1% -LU T5 Lutron EcoSystem 5% -EDALI1 d/dLED DALI 1% <sup>1</sup> -EDALI01 d/dLED DALI 0.1% <sup>1</sup>	blank 120V 277V
<b>B</b> Module Lumen Output			<b>E</b> Options	
			-EM Emergency Backup -1100 C-Channel Bar Hanger -1200 Rot Bar Hanger -1400 Wood Joist Bar Hanger	

##### Notes

- d/dLED dimming not available for 3000lm module

Reflector Matrix | Example: IC632H2-SF-SB

A	B	C	D
<b>A</b> Series	IC632	<b>C</b> Trim	<b>D</b> Lens Type
6" Regressed Lensed Reflector		-SF Self Flanged -SF-W Self Flanged White	-CR Clear Tempered -SB Sand Blasted
<b>B</b> Reflector Finish			
C Clear HZ Haze W White			

##### \*\*\*\*\*

Intense Lighting  
 3340 E La Palma Ave., Anaheim, CA 92806 | tel 714 630-9807 | fax 714 630-9883  
 © 2016 Intense Lighting, LLC. All rights reserved. Subject to change without notice.

Catalog Number	System Wattage *	Delivered Lumens **
SS6G21100358 / IC632C-CR	16W	922lm @ 3500K
SS6G21500358 / IC632C-CR	19W	1262lm @ 3500K
SS6G22000358 / IC632C-CR	25W	1609lm @ 3500K
SS6G23000358 / IC632C-CR	37W	2229lm @ 3500K

\* System wattage include driver and LED module consumption.  
 \*\* Delivered lumen output will vary depending on CCT and lens type (0.7 multiplier for -SB lens).

##### LED MODULE

- Powered by OSRAM PrevaLED® Cube LED Module
- 50,000 hours @ 70% lumen maintenance
- No heat, mercury or UV
- Available in 1100, 1500, 2000 and 3000lm
- CRI = 80 & CCT 2700K, 3000K, 3500K, 4000K

##### ELECTRICAL SYSTEM

- Osram Optotronic® standard with 0-10V dimming to 10%
- Power factor > 0.9, 50/60Hz
- Multiple dimming options available

##### OPTICAL SYSTEM

Specification Grade Reflector, 1.2mm thickness, 1 1/4" regressed lens. Reflector available in clear specular, haze or white. Architectural, discrete polished self flange standard. Optional painted white flange is available.

##### FRAME CONSTRUCTION

Heavy duty galvanized steel frame with a large access junction box. ETL listed for through wiring. LED light engine and driver are accessible from above or below ceiling.

##### INSTALLATION

The luminaire is type Non-IC. Insulation must be kept at a minimum of 3" away from fixture. Universal mounting brackets included. Compatible with C-channel, 1x4 bar, wood joist bar hanger and EMT. Bar hangers must be ordered separately. C-channel are recommended for T-bar ceilings. Maximum ceiling thickness is 1 1/4".

##### EMERGENCY BACKUP

Remote test switch included. Emergency driver operates LED load of up to 7.0 Watts at a nominal 450 lumens for a minimum of 90 minutes.

##### LISTING / WARRANTY

- ETL listed to US and Canadian standards for wet locations.
- 10-Year Intense LED Limited Warranty



E5 - GARAGE ENTRY LIGHTS

# THE MERCURY PARKING GARAGE LED

50W

REPLACES UP TO A 120-WATT METAL HALIDE FIXTURE

FOR MORE FWC APPROVED LED LIGHTING SEE SPECGRADELED.COM



FWC APPROVED (LBF-FWC)



**SPECIFICATIONS**

Expected life: Over 100,000 hrs.  
 Rating: IP 65  
 Color Rendering Index (CRI): >80  
 Power factor: >0.98%  
 Input line voltage: 90-305 VAC  
 347-480V (optional)  
 Operating temp. -40°F-122°F  
 (Also available: -40°F -140°F)  
 Input line frequency: 50/60 Hz  
 LED efficiency:  
 - warm white, 131 lm/w  
 - natural white, 141 lm/w  
 - cool white, 143 lm/w

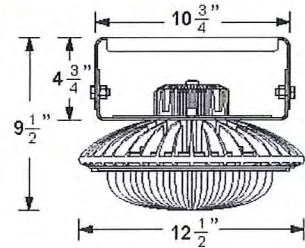
**MISC SPECS**

LED chips: Lumileds Luxeon-T  
 Driver: UL approved Meanwell  
 Dimmable: 0-10V (optional)  
 Occupancy sensor: (optional)  
 Hanging weight: 10 lbs.

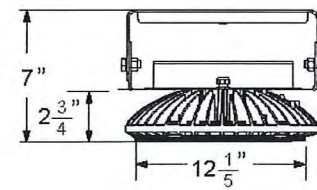
**MATERIALS**

Heat sink housing:  
 Anodized aluminum  
 Finish: Powder coated  
 Dropped lens: Acrylic

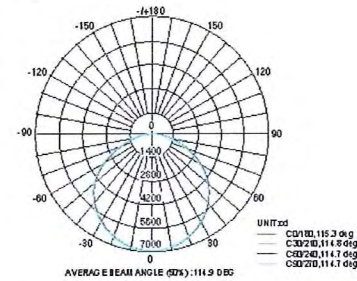
**50W DIMENSIONS (SURFACE MOUNT)**



**50W 480V CONFIGURATION (SURFACE MOUNT)**



**PHOTOMETRICS**



E6 - TREE LIGHTING



LTV81-RGBW  
 Lightvault® 8  
 kl\_lv81\_rgbw\_spec.pdf

JOB \_\_\_\_\_ TYPE \_\_\_\_\_  
 NOTES \_\_\_\_\_ APPROVALS \_\_\_\_\_

**FEATURES**

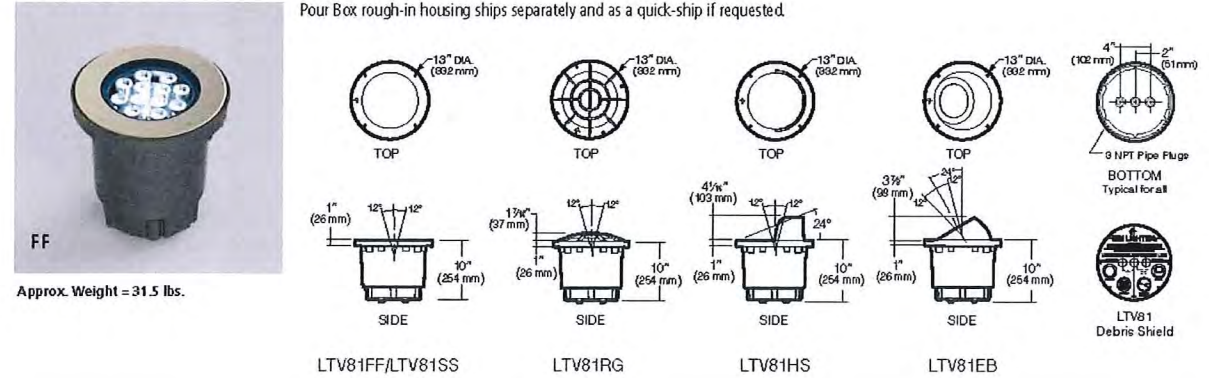
- Bluetooth connectivity for remote control aiming, dimming, color changing
- Free mobile App for Android and iOS
- Hardwired DMX connectivity for advanced control (controller supplied by others)
- IP68 sealed light engine

**Certifications**



**SPECIFICATIONS**

Pour Box rough-in housing ships separately and as a quick-ship if requested.



Approx. Weight = 31.5 lbs.

**ORDERING CODE**

Fixture Size	Style	Distribution	Electrical Module	Lens Options <sup>1</sup>	Rebar Cage Anchor
LTV81 13" Dia.	FF Flat Frame SS Stainless Steel HS Half Shield RG Rock Guard	SP Spot NF Narrow Flood	Source 24L 24 LEDs (w/ UV81) 12L 12 LEDs (w/ UV81) Color Temperature RGBW Voltages UV 120-277V	SR Slip-Resistant Lens <sup>2</sup>	RCA81 for LTV81

<sup>1</sup> All lens options are integral parts of component module and must be installed at factory.  
<sup>2</sup> Slip Resistant Lens only available with the Flat Frame and Stainless Steel.

Kim Lighting reserves the right to change specifications without notice.

© 2016 KIM LIGHTING | 16555 East Gale Ave. | City of Industry | CA 91745  
 P 626.968.5666 | F 626.369.2695 | www.kimlighting.com | Rev. Dec 22, 2016



| 1 |

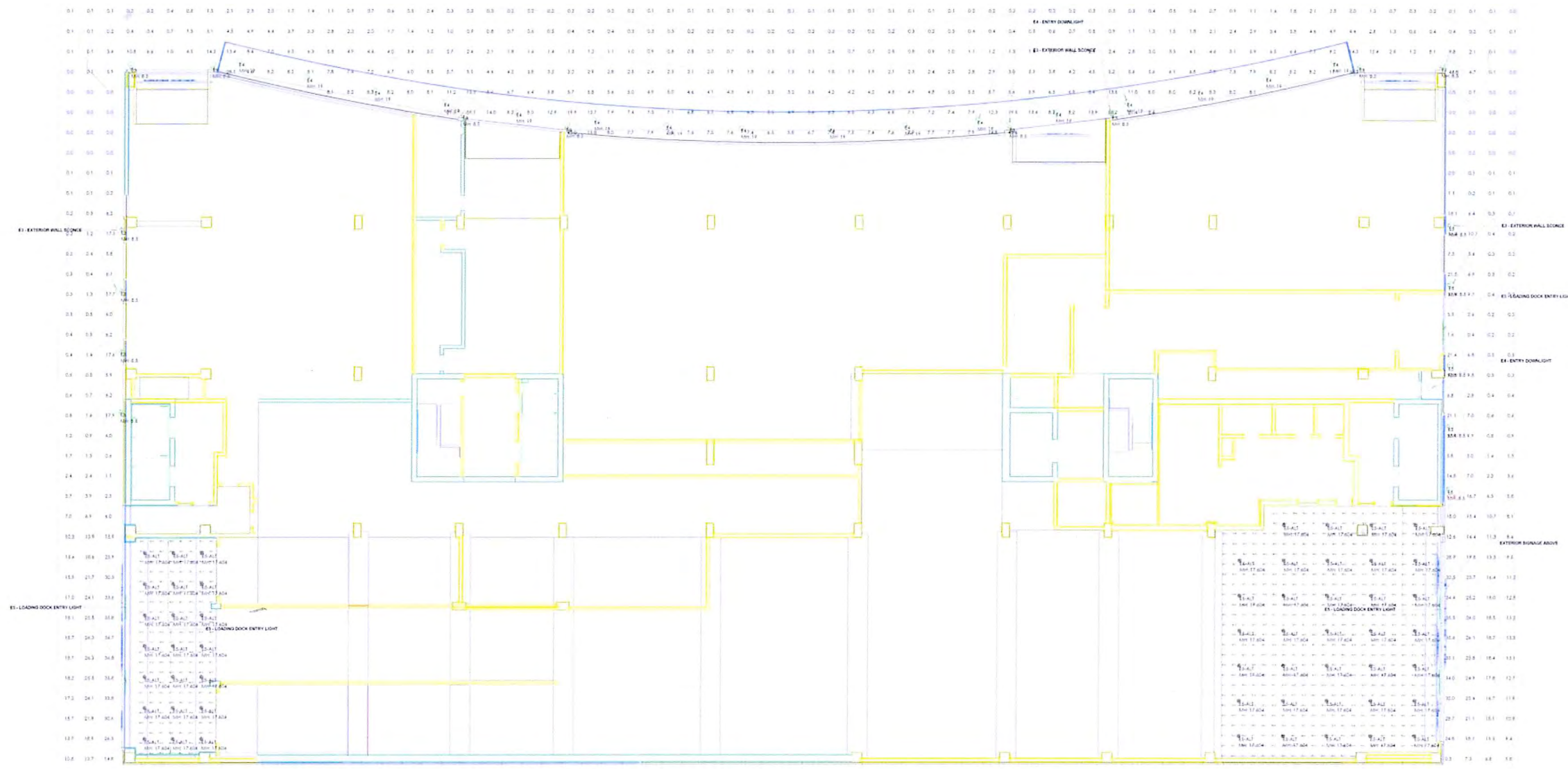




ORNAMENTAL STREET LIGHTS BY CITY OF MADISON







**Luminaire Schedule**

Symbol	Qty	Label	Arrangement	Arr. Lum. Lumens	LLF	Mfr	Description
○	17	E3	GROUP	6304	0.571	N.A.	FCC820-XXXV-3K-2000-XX-UNFL-DNFL-X
○	16	E4	SINGLE	2225	0.900	INTENSE LIGHTING	SS6G2300035B_IC632C-CR
○	55	E5-ALT	SINGLE	7120	0.900	SPECGRADELED	LBF-50-XXXXK-120-DL

**Room Summary**

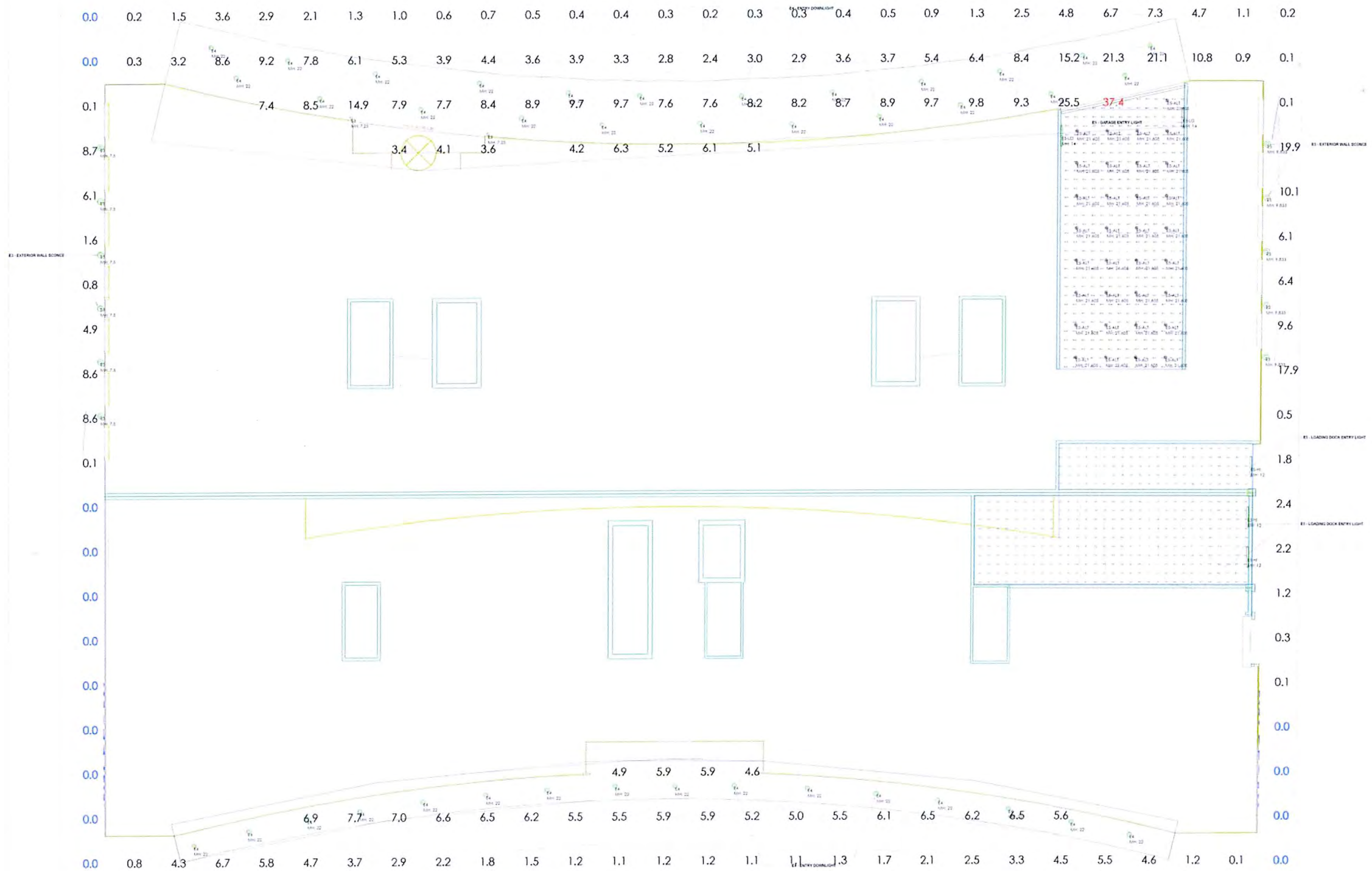
Label	Wall Ht.	Description

**Calculation Summary**

Label	CalcType	Units	Avg	Max	Min	Max/Min	Description
Area_Planar	Illuminance	Fc	6.79	61.9	0.0	N.A.	Readings at ground
Doyle Street Parking_Floor	Illuminance	Fc	53.78	66.3	34.2	1.94	Readings taken at floor
Wilson Street Parking_Floor	Illuminance	Fc	51.15	69.3	0.0	N.A.	Readings at ground

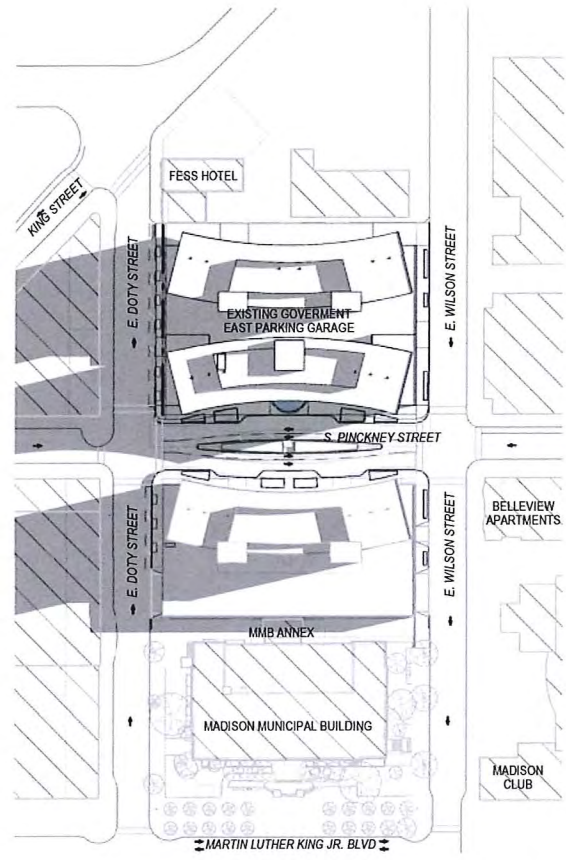
Filename: C:\Users\chris\Desktop\Layouts\Judge Doyle Square\Judge Doyle Square.AGI



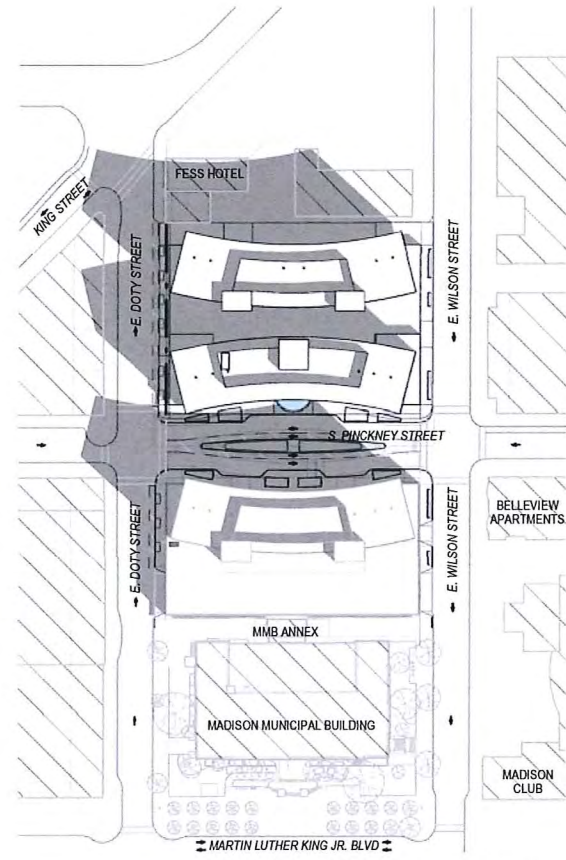


Symbol	Qty	Label	Arrangement	Arr. Lum. Lumens	LLF	Mfr	Description
⊙	13	E3	GROUP	6304	0.571	N.A.	FCC820-XXXV-3K-2000-XX-UNFL-DNFL-X
⊙	39	E4	SINGLE	2225	0.900	INTENSE LIGHTING	SS6G23000358_IC632C-CR
⊙	33	E5-ALT	SINGLE	7120	0.900	SPECGRADELED	LBF-50-XXXX-120-DL
⊙	3	E5-HI	SINGLE	3796	0.900	Luminaire LED, Inc., Edison, New Jersey,	AEL48-35 2W 4000K
⊙	2	E5-LO	SINGLE	2030	0.900	Luminaire LED, Inc., Edison, New Jersey,	AEL48-20W 4000K

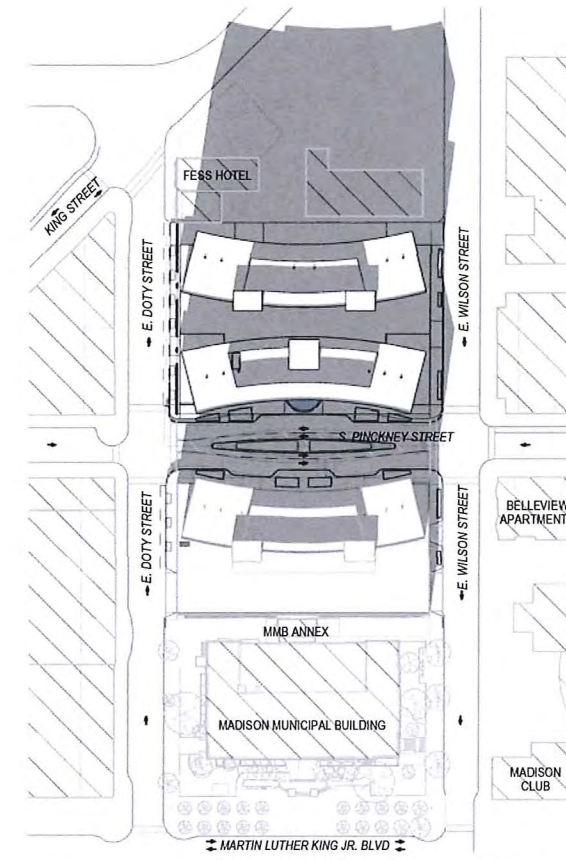
Label	CalcType	Units	Avg	Max	Min	Max/Min	Description
Ground_Planar	Illuminance	Fc	4.73	37.4	0.0	N.A.	Readings at ground
Loading Dock Floor	Illuminance	Fc	2.56	11.9	0.0	N.A.	Readings at ground
Parking Entrance	Illuminance	Fc	49.95	63.5	28.5	2.23	Readings at ground



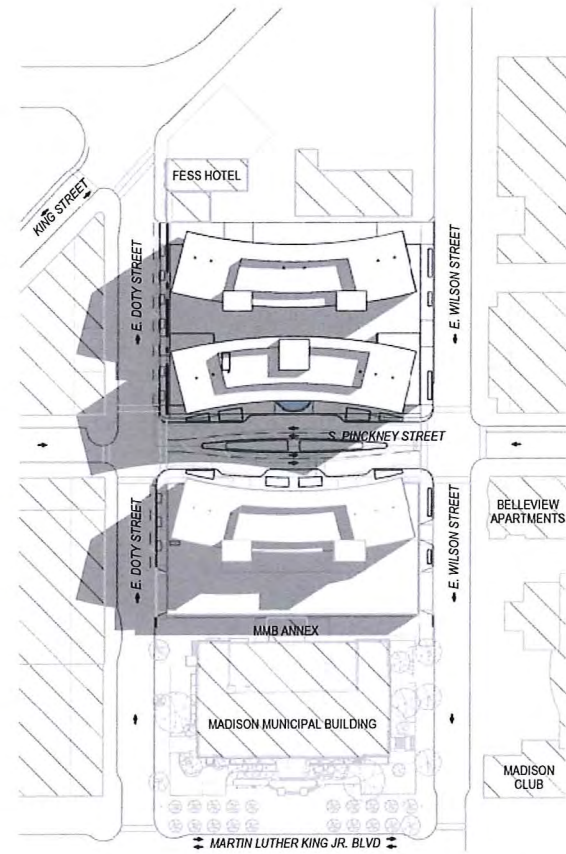
9 AM, MARCH 21



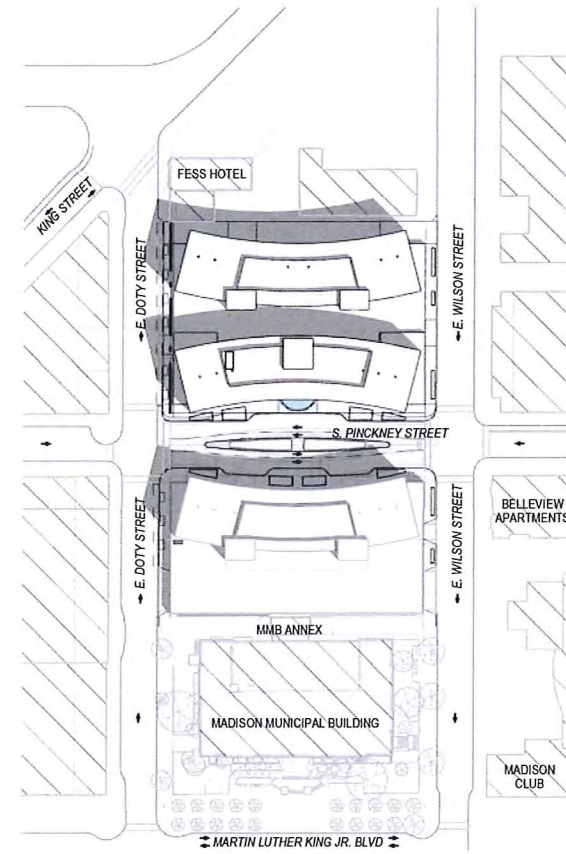
NOON, MARCH 21



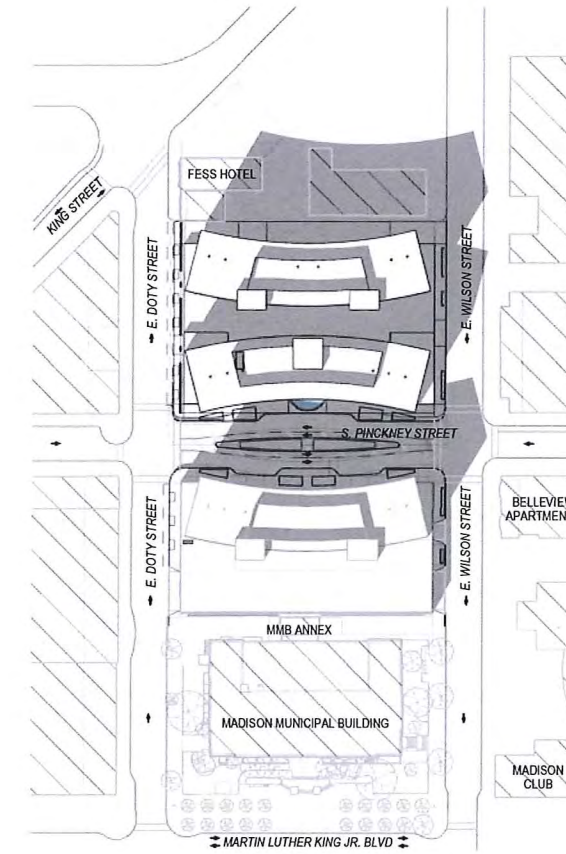
3 PM, MARCH 21



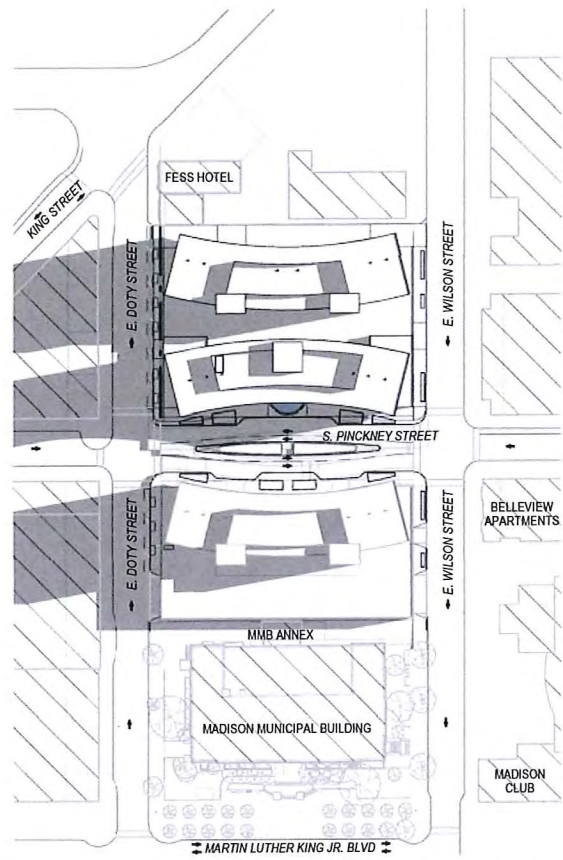
9 AM, JUNE 21



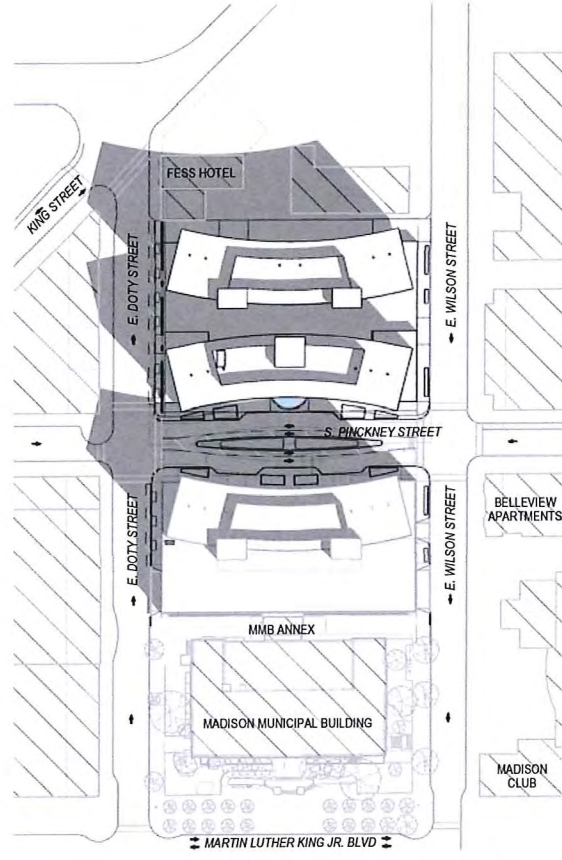
NOON, JUNE 21



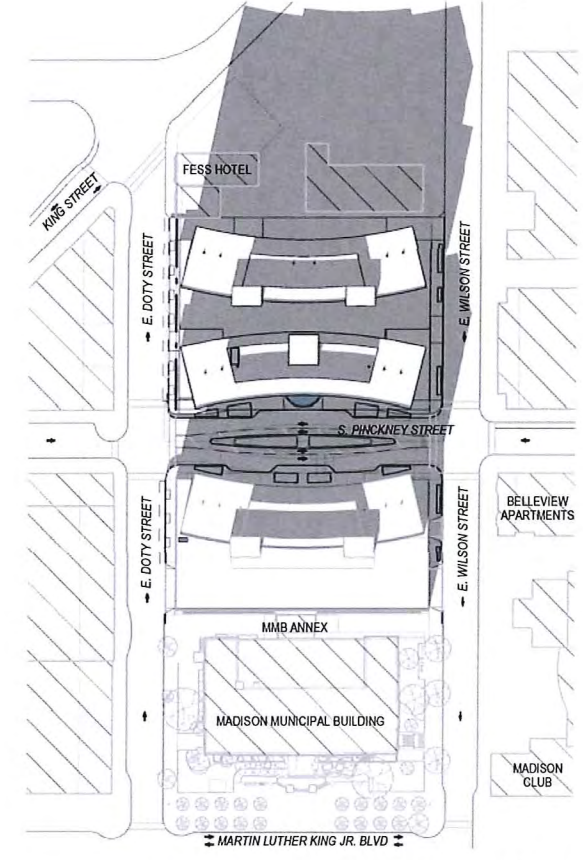
3 PM, JUNE 21



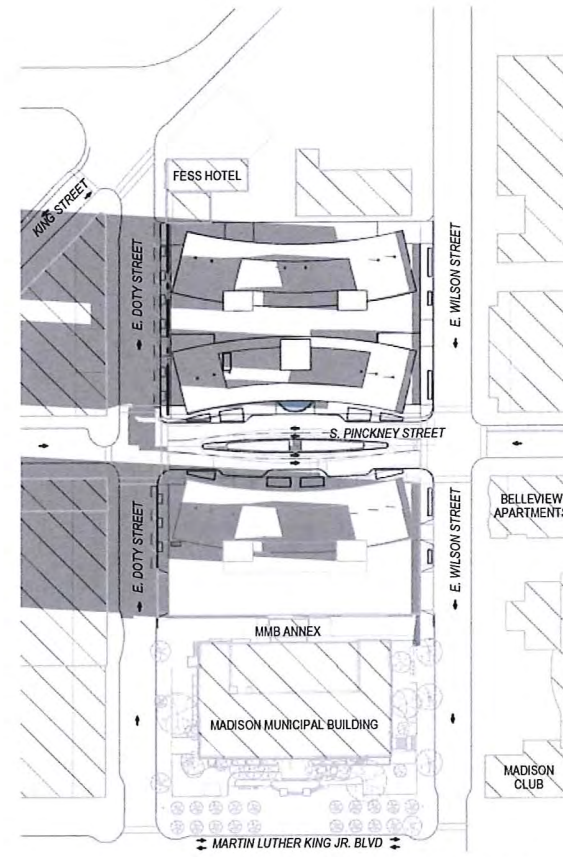
9 AM, SEPTEMBER 21



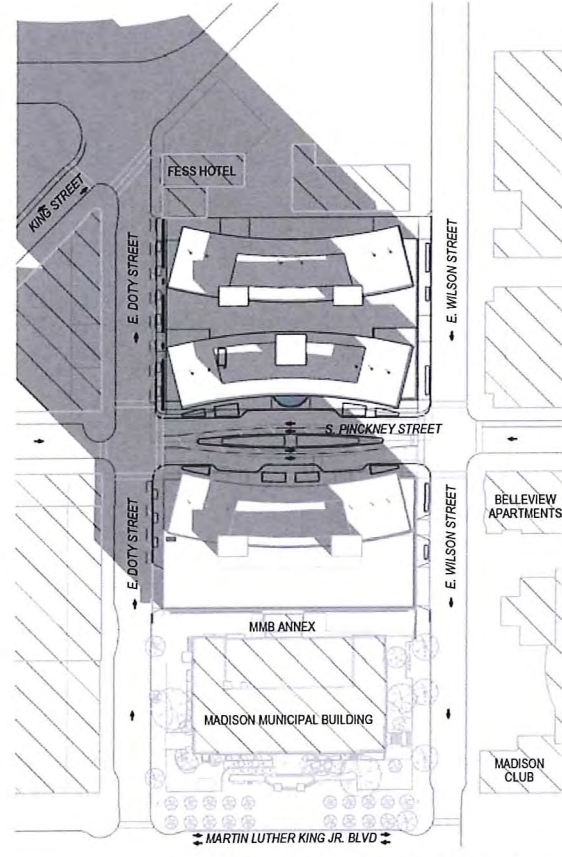
NOON, SEPTEMBER 21



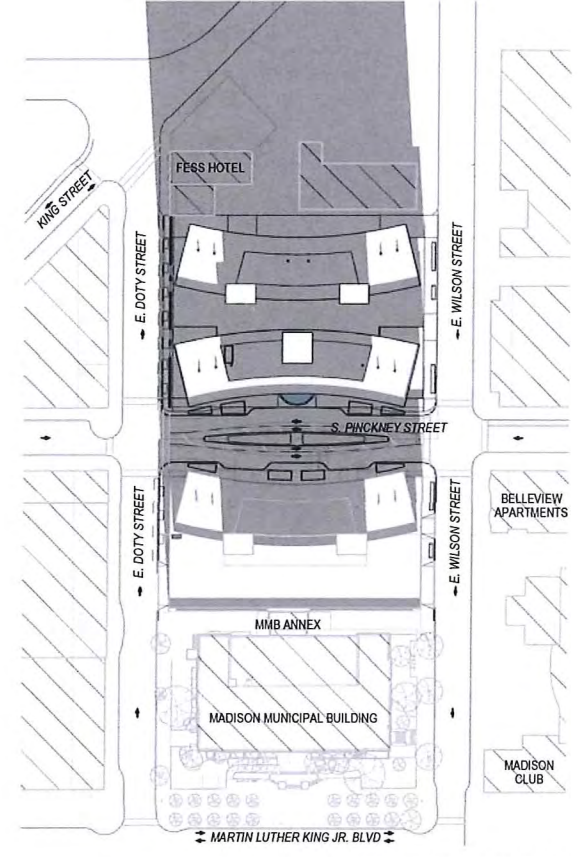
3 PM, SEPTEMBER 21



9 AM, DECEMBER 21

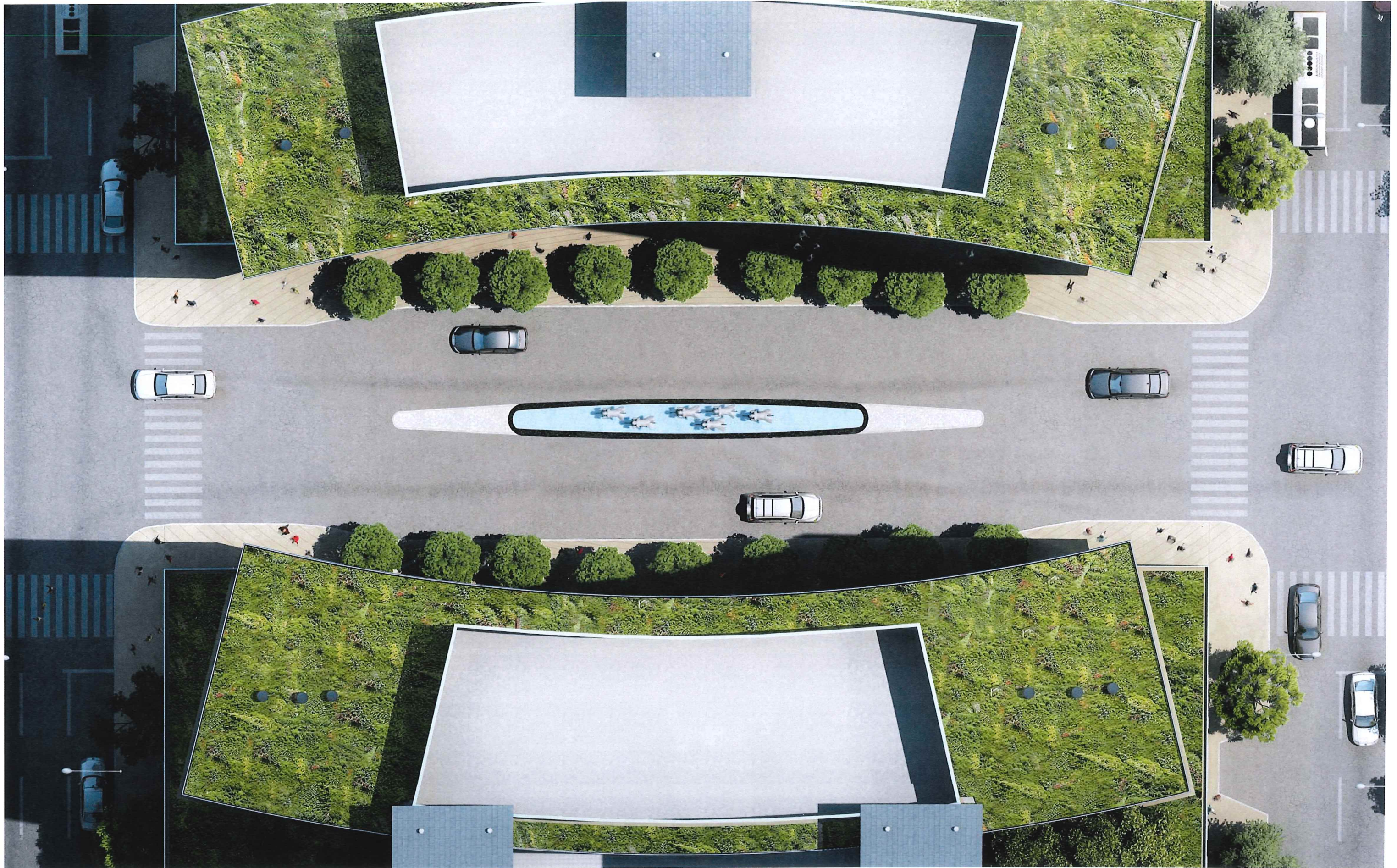


NOON, DECEMBER 21



3 PM, DECEMBER 21







DOTY STREET



WILSON STREET

RENDER - STREET WALLS

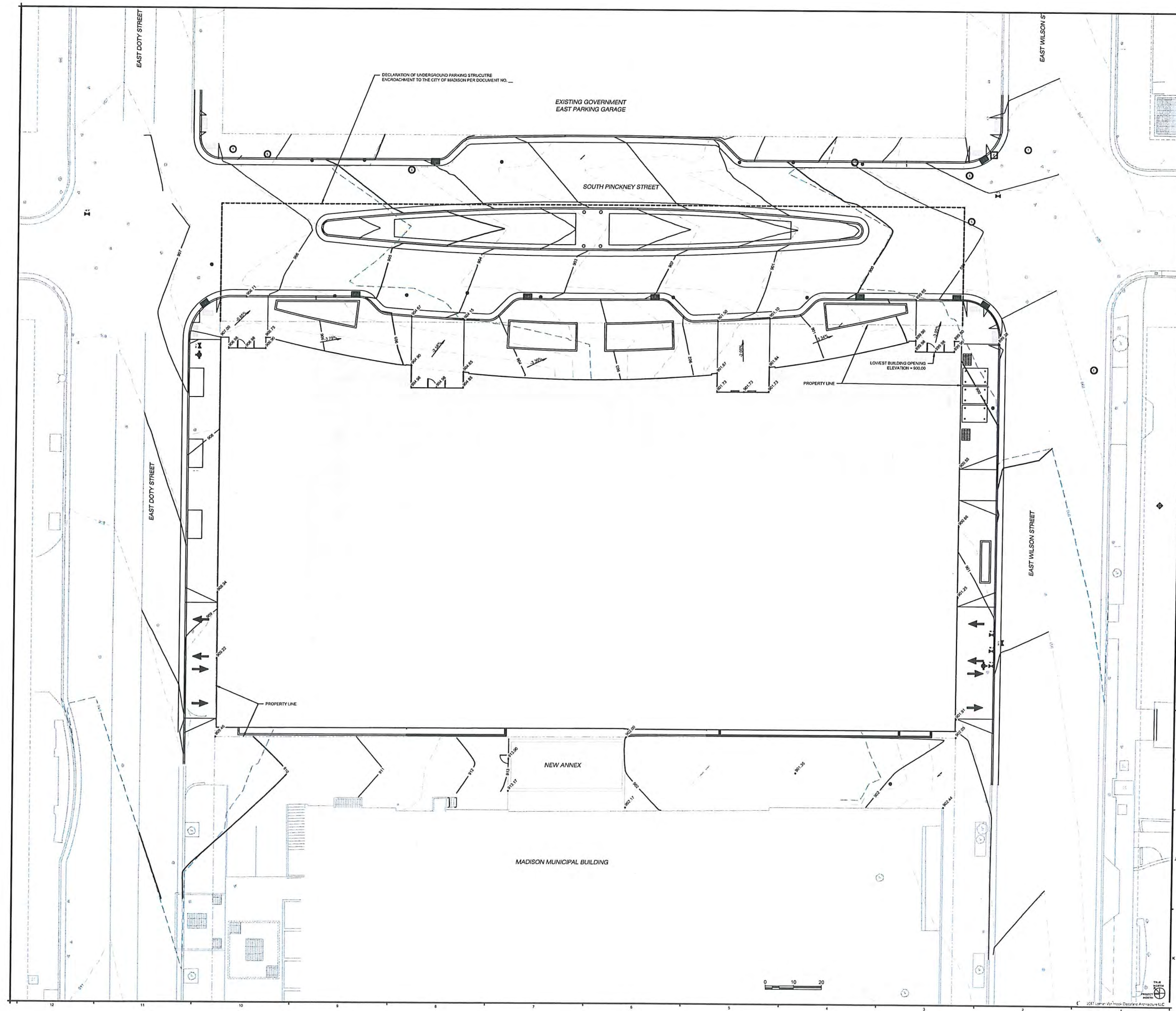












**LEGEND:**

	EXISTING CONTOUR LINES
	PROPOSED CONTOUR LINES
	GRAZING LIMITS
	FINISHED / PROPOSED SPOT ELEVATION
	FINISHED / PROPOSED SLOPE

**IN-PROGRESS 03/01/2017**

NO.	DESCRIPTION	DATE

**JUDGE DOYLE SQUARE - BLOCK 88**  
**JUDGE DOYLE SQUARE**  
 CITY OF MADISON, 53703

**ARCHITECT:**  
*iothan vanhook destefano*  
**ARCHITECTURE LLC**

**ASSOCIATE ARCHITECT:**

**PARKING CONSULTANT:**

**STRUCTURAL ENGINEERS:**

**MEP/FIT ENGINEERS:**

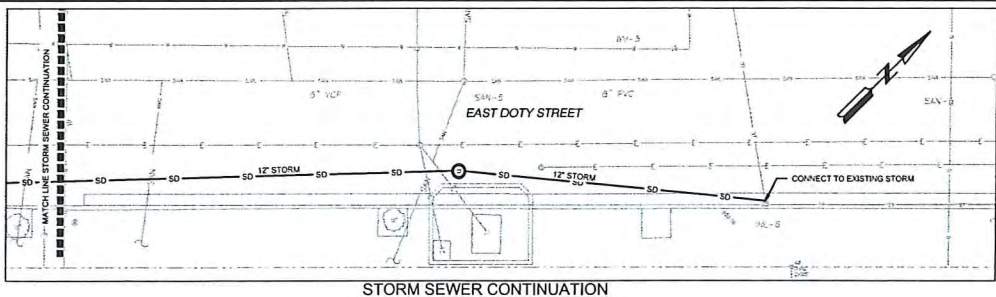
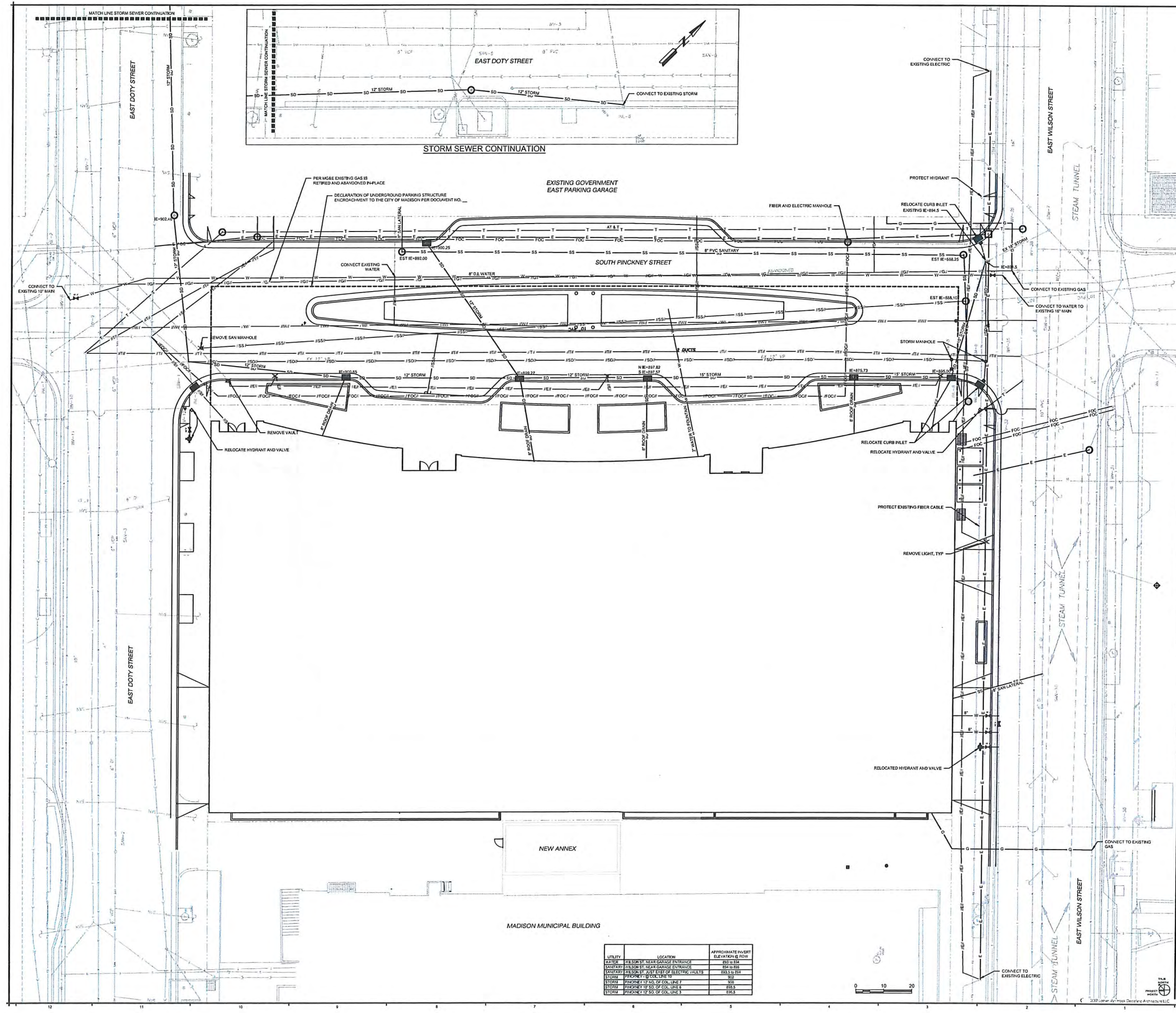
**CIVIL ENGINEERS:**

**LANDSCAPE ARCHITECT:**

**Block 88 Site Grading Plan**

Drawn By:	LGK	Date:	3/10/17
Checked By:		Drawing Number:	
Checkered:			
Approved:			
Job Number:			

**C-121.0**  
© 2017 Iothan Vanhook Destefano Architecture LLC



**LEGEND:**

- (E)— REMOVE ELECTRIC UNDERGROUND
- (FOC)— REMOVE FIBER OPTIC CABLE
- (G)— REMOVE GAS LINE
- (SS)— REMOVE SANITARY SEWER
- (SD)— REMOVE STORM SEWER
- (T)— REMOVE TELEPHONE
- (W)— REMOVE WATER LINE
- ELECTRIC MANHOLE
- CLEANOUT, SANITARY
- ELECTRIC MANHOLE
- FIBER OPTIC MANHOLE
- FIRE HYDRANT
- SANITARY SEWER MANHOLE
- STORM INLET CURB
- STORM SEWER MANHOLE
- TELECOMMUNICATIONS MANHOLE
- WATER VALVE
- GAS
- (E)— ELECTRIC, UNDERGROUND
- (FOC)— FIBER OPTIC CABLE
- (SS)— SANITARY SEWER
- (SD)— STORM SEWER
- (T)— TELEPHONE, UNDERGROUND
- (W)— WATER

**IN-PROGRESS 03/01/2017**

No.	Description	Date

**JUDGE DOYLE SQUARE - BLOCK 88**  
**JUDGE DOYLE SQUARE**  
**CITY OF MADISON, 53703**

**ARCHITECT:**  
**Iothen van hook destefano**  
**ARCHITECTURE LLC**

**ASSOCIATE ARCHITECT:**  
**MOORE KENZELING ARCHITECTS**

**PARKING CONSULTANT:**  
**WALKER**

**STRUCTURAL ENGINEERS:**  
**HALVORSON PARTNERS**

**METFP ENGINEERS:**  
**Affiliated Engineers**

**CIVIL ENGINEERS:**  
**Mead & Hunt**

**LANDSCAPE ARCHITECT:**  
**WOLFF LANDSCAPE ARCHITECTURE**  
 PLANNING  
 LANDSCAPE ARCHITECTURE  
 TRADE DESIGN

**BLOCK 88 SITE UTILITY PLAN**

Drawn By	Dr.
LOC	3192837
Checked By	Dr. Peter Number
Client	
Approved	
Scale	
Project Number	<b>C-141.0</b>
Date	3/14/17

UTILITY	LOCATION	APPROXIMATE INVERT ELEVATION @ ROW
ENTER	RELOC BY NEAR GARAGE ENTRANCE	893.0 @ 84
SANITARY	WILSON ST. NEAR GARAGE ENTRANCE	894.0 @ 85
SANITARY	WILSON ST. JUST EAST OF ELECTRIC VAULTS	883.5 @ 84
STORM	PINKNEY ST. CO. LINE 11	900
STORM	PINKNEY ST. SO. OF COL. LINE 7	883.5
STORM	PINKNEY ST. SO. OF COL. LINE 8	883.5
STORM	PINKNEY ST. SO. OF COL. LINE 9	883.5

