



## MEMORANDUM

Date: June 27, 2008  
To: UDC  
From: John Lichtenheld  
Project: Allied Drive Development  
SAA #: 2296.01

Landscape Architecture

Urban Design

Community Planning

Land Planning

Civil Engineering

Re: Reply Comments to UDC

Comments 1, 2 and 3 – Additional accent colors have been added to the buildings to provide more variety.

Comment 4 – The sloped and flat roof condition on the low rise buildings will be detailed properly with ice and water shield up sloped and vertical walls so that flat roof area can be drained properly. A downspout and scupper box will be installed to drain the roof area.

Comment 5 – Walkways at the drop off area at street A and C have been incorporated into the plans

Comment 6 – The bollards in the plaza are located within a planting bed and not in a paved area. Circulation of residents and patrons to the new development should not be impeded with the bollards being placed in landscape beds.

Comment 7 – The columns are currently placed a few inches within the right-of-way line and sidewalk. The columns can not be placed any closer to the sidewalk without encroaching on to public property.

Comment 8 – Glass has been added to the north end of vestibule on Building B.

Comment 9 – Additional accent colors have been added to the buildings to provide more variety. We believe with the new color arrangement, the color yellow is used in a sensitive way.

Comment 10 – The plan is to use fiber cement siding and not substitute with vinyl or lesser materials.

Comment 11 – The Norway maples have been replaced with the State Street Maple and the Locusts have been replaced with Kentucky Coffee Tree.

Comment 12 – Storage units are provided inside the building for the tenants.

Comment 13 – The community was involved in the design of play structures and we are intending on doing all we can to involve them through the construction process.

Comment 14 – We are intending on incorporating a Kiosk element in the pilaster directly adjacent to the public entrance to the plaza.

Comment 15 – Additional accent colors have been added to the buildings to provide more variety.

Schreiber/Anderson Associates, Inc.  
717 John Nolen Drive  
Madison, WI 53713  
T 608.255.0800  
F 608.255.7750  
www.saa-madison.com



## MEMORANDUM

**Comment 16 – We are concerned with cost as well and will be updating costs as we continue through the design process.**

**Comment 16 – Photometrics for the plaza have been adjusted to be more legible – See Plans**

Landscape Architecture

Urban Design

Community Planning

Land Planning

Civil Engineering

**Schreiber/Anderson Associates, Inc.**

717 John Nolen Drive

Madison, WI 53713

T 608.255.0800

F 608.255.7750

[www.saa-madison.com](http://www.saa-madison.com)



**AlliedDrive  
Neighborhood  
Redevelopment**



epstein uhen : architects

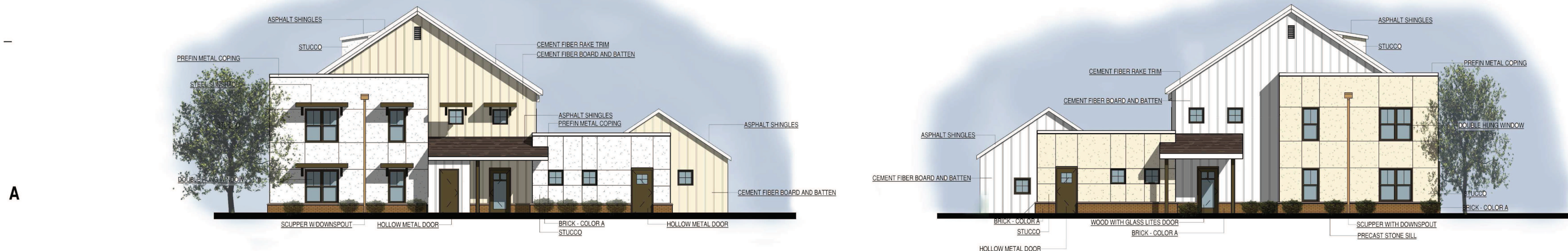
**Building C  
Elevations**  
July 1, 2008



**C1** EAST ELEVATION  
1/8" = 1'-0"

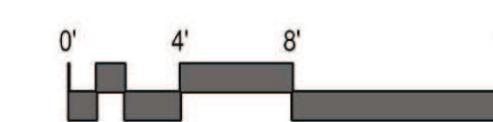


**B1** WEST ELEVATION  
1/8" = 1'-0"



**A1** SOUTH ELEVATION  
1/8" = 1'-0"

**A4** NORTH ELEVATION  
1/8" = 1'-0"





**C2** NORTH ELEVATION  
1/8" = 1'-0"

**C5** WEST ELEVATION  
1/8" = 1'-0"



**AlliedDrive  
Neighborhood  
Redevelopment**



SCHREIBER / ANDERSON  
ASSOCIATES, INC.

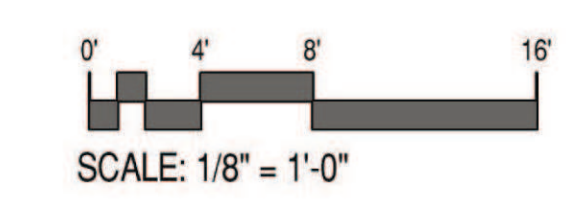


epstein uhen : architects



**A2** EAST ELEVATION  
1/8" = 1'-0"

**A5** SOUTH ELEVATION  
1/8" = 1'-0"



**Building B  
Elevations**  
July 1, 2008



**AlliedDrive  
Neighborhood  
Redevelopment**



SCHREIBER / ANDERSON  
ASSOCIATES, INC.



eppstein uhen : architects

**Building A  
Elevations**  
July 1, 2008

1 2 3 4 5 6



**C1** WEST ELEVATION  
1/8" = 1'-0"



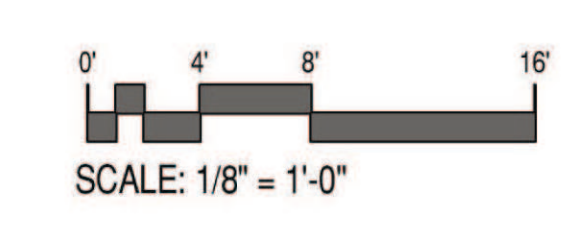
**C4** SOUTH ELEVATION  
1/8" = 1'-0"



**A1** NORTH ELEVATION  
1/8" = 1'-0"



**A4** EAST ELEVATION  
1/8" = 1'-0"



1 2 3 4 5 6

[Home](#)

[About](#)

[Products](#)

[Service](#)

[Contact](#)

**NEWPORT**

- [Arm Extensi](#)
- [Wall Mounts](#)
- [Post Mounts](#)
- [Poles](#)
- [Ballasts - HI](#)
- [Fluorescent](#)
- [Mounting O](#)
- [Accessories](#)
- [Glass Optio](#)
- [Finish Optio](#)
- [Photometric](#)
- [Ordering Ins](#)



UCR16/55/WM14/55/CL3



UCR12/54/B10/54/PR3

LIGHT FIXTURE @  
PATIO'S/UNIT  
ENTRIES IN BRONZE



UCR16/59/WM11/59/CL3

Baselite Co  
12260 East  
Chino, CA 9

Toll Free 87  
TEL 909-54  
FAX 909-54

eMail sales

[Home](#)

[About](#)

[Products](#)

[Service](#)

[Contact](#)

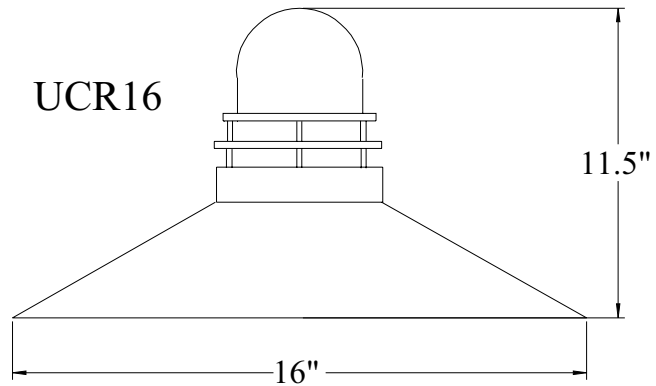
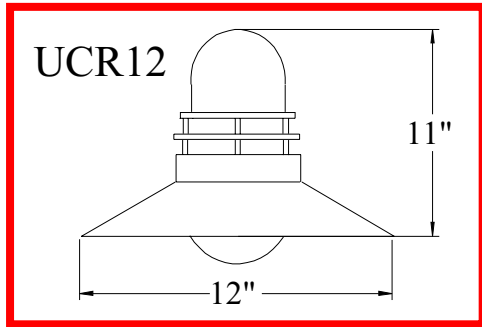
# Newport

**MODEL NO.**

**TYPE:**

**JOB NAME:**

**CERTIFICATION:** UL LISTED



**FINISH-** Available in high quality powder coat, or anodized finish.

**LAMP OPTIONS-** Accommodates Incandescent, Compact Fluorescent or High Intensity Discharge Lamps. (ordered separately)

**MOUNTING-** 1/2" or 3/4" tapped hub is supplied. Top or side mount available. Fixtures are pre-wired with 48" or 96" leads. Available with cord or stem sets.

**REFLECTOR-** Spun out of heavy-duty Aluminum or Galvanized construction.

**SOCKETS-** Incandescent (rated for 600Watt/660Volt), and HID (4kv pulse rated) are medium base porcelain. Compact fluorescent are thermoplastic. (4-pin triple tube lamps)

Model #	Color	Mounting Source	Light Source			Globe	Accessories
			Inc.	CF	HID (MH & HPS)		
UCR12	40,41,42,	Pg. 39-41 for arm ext.	100W	26,32, or 42W*	35,50,70,100W*	Pg. 50	Pg. 49
UCR16	43,44,45, 46,48,49, 50,51,52, 53,54,55, 57,58,59, 60,61,62, 63	Pg. 42-44 for post mts. & poles pg. 48 for mounting hubs	100W	26,32, or 42W*	35,50,70,100W*		
				*Remote ballast see pg. 47	Remote ballast see pg. 47		



12260 East End Ave.  
Chino, Ca. 91710  
Phone 877-999-1990  
Fax 877-999-1955

[Home](#)

[About](#)

[Products](#)

[Service](#)

[Contact](#)

[<< Previous Page](#)

[Next Page >>](#)

# Finish Options

- Arm Extensi
- Wall Mounts
- Post Mounts
- Poles
- Ballasts - HI Fluorescent
- Mounting Oj
- Accessories
- Glass Optio
- Finish Optio
- Photometric
- Ordering Ins



40

Copper with Clear



41

Black



42

Dk. Green



43

Red



44

White



45

Med. Blue



46

Yellow



48

Polish



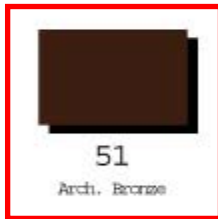
49

Galvanized



50

Navy Blue



51

Arch. Bronze



52

Patina



53

Rust



54

Stucco



55

Sage



56

Satin Aluminum  
Satin Copper / Clear



57

Polished  
Aluminium



58

Satin Aluminium  
Clear Coat



59

Coppertone



60

Sand Green



61

Anodized

[Home](#)

[About](#)

[Products](#)

[Service](#)

[Contact](#)

Baselite Co  
12260 East  
Chino, CA 9

Toll Free 87  
TEL 909-54  
FAX 909-54

eMail sales



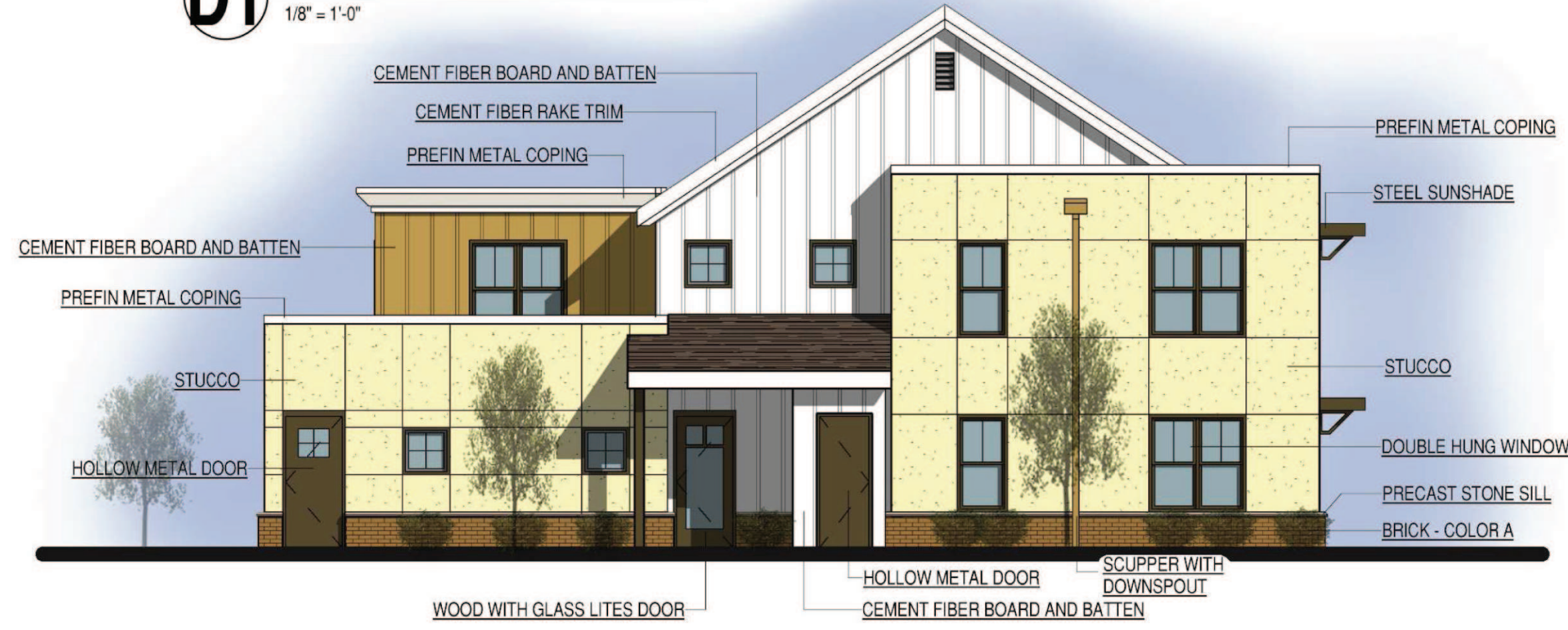
**BUILDING E**

D

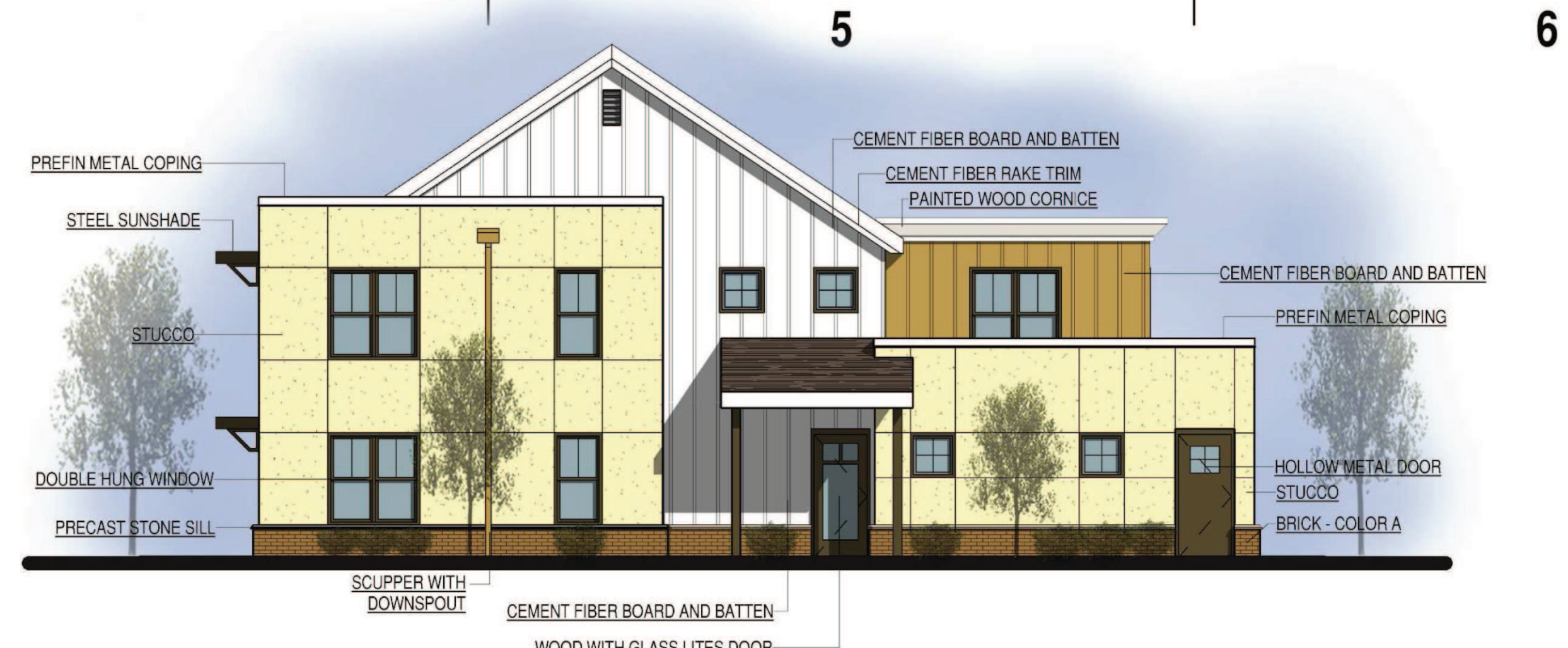
C



**D1 SOUTH ELEVATION**  
1/8" = 1'-0"



**C1 WEST ELEVATION**  
1/8" = 1'-0"



**D4 EAST ELEVATION**  
1/8" = 1'-0"



**C4 NORTH ELEVATION**  
1/8" = 1'-0"

B

**BUILDING F**

A



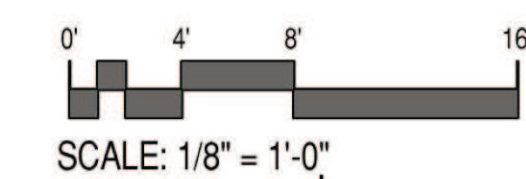
**B1 SOUTH ELEVATION**  
1/8" = 1'-0"



**A4 NORTH ELEVATION**  
1/8" = 1'-0"

**A1 WEST ELEVATION**  
1/8" = 1'-0"

1 2 3 4 5 6



**AlliedDrive  
Neighborhood  
Redevelopment**



**Building E & F  
Elevations  
July 1.2008**

1

2

3

4

5

6

D

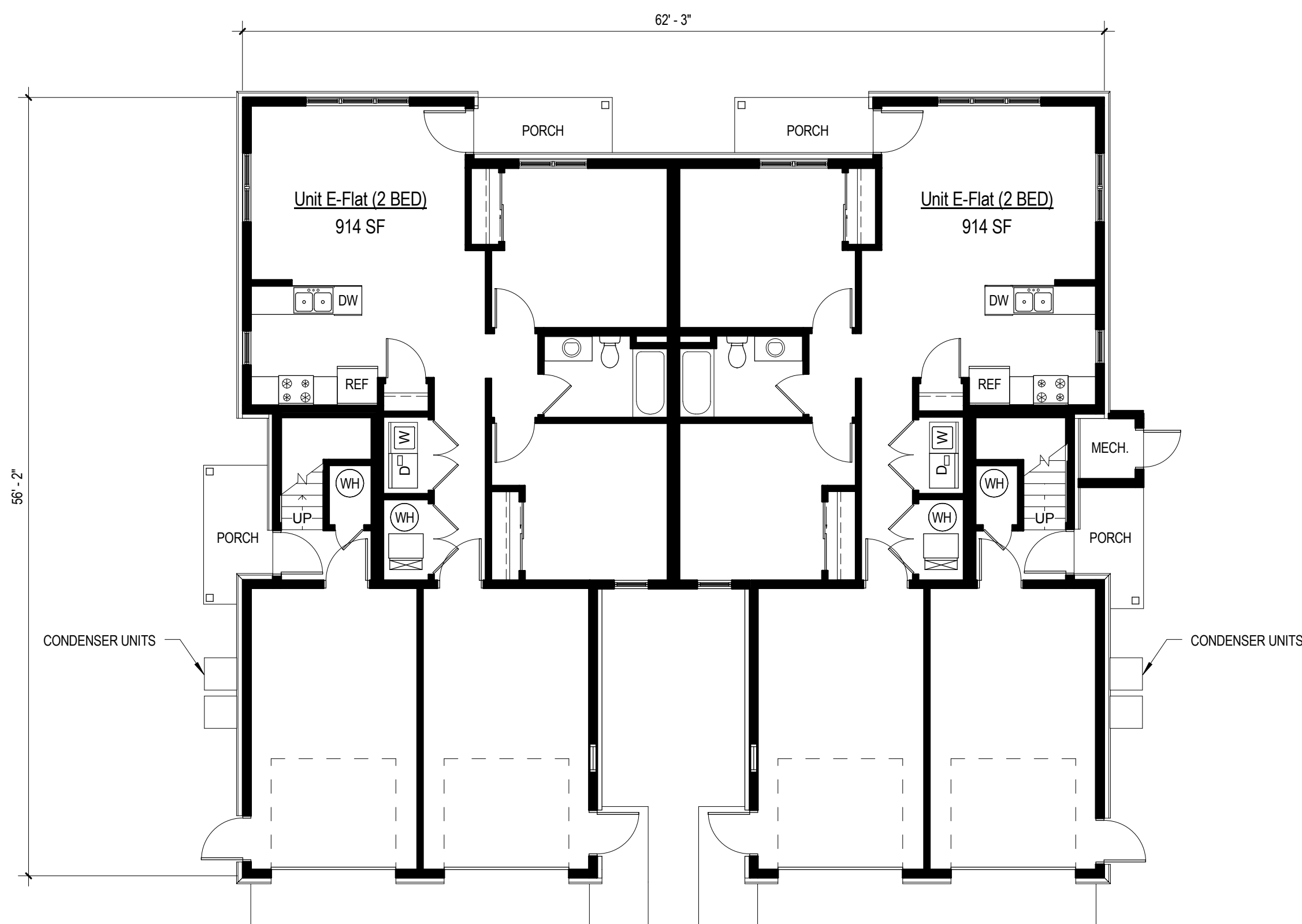
C

B

A



**A2** Second Floor  
1/8" = 1'-0"



**A4** First Floor  
1/8" = 1'-0"



**eppstein uhen : architects**

milwaukee 333 East Chicago Street  
Milwaukee, Wisconsin 53202  
tel 414 271 5350 fax 414 271 7794  
madison 222 West Washington Ave, Suite 650  
Madison, Wisconsin 53703  
tel 608 442 5350 fax 608 442 6680



**SCHREIBER / ANDERSON ASSOCIATES, INC.**

7817 John Nolen Drive  
Madison, WI 53713  
Ph. 608.255.0800  
Fx. 608.255.7750  
www.saa-madison.com

**PROJECT INFORMATION**

**ALLIED NEIGHBORHOOD REDEVELOPMENT PLAN - BUILDING E MADISON, WI**



**ISSUANCE AND REVISIONS**

**B SD PROGRESS SET**

**REVISIONS**

#	DATE	DESCRIPTION
---	------	-------------

**SHEET INFORMATION**

**PROGRESS DOCUMENTS**

These documents are not final construction documents and should not be used for final bidding or construction-related purposes.

PROJECT MANAGER JK

PROJECT NUMBER 067380-020

**A** DATE JUNE 4, 2008

**FLOOR PLANS**

**A140**

1

2

3

4

5

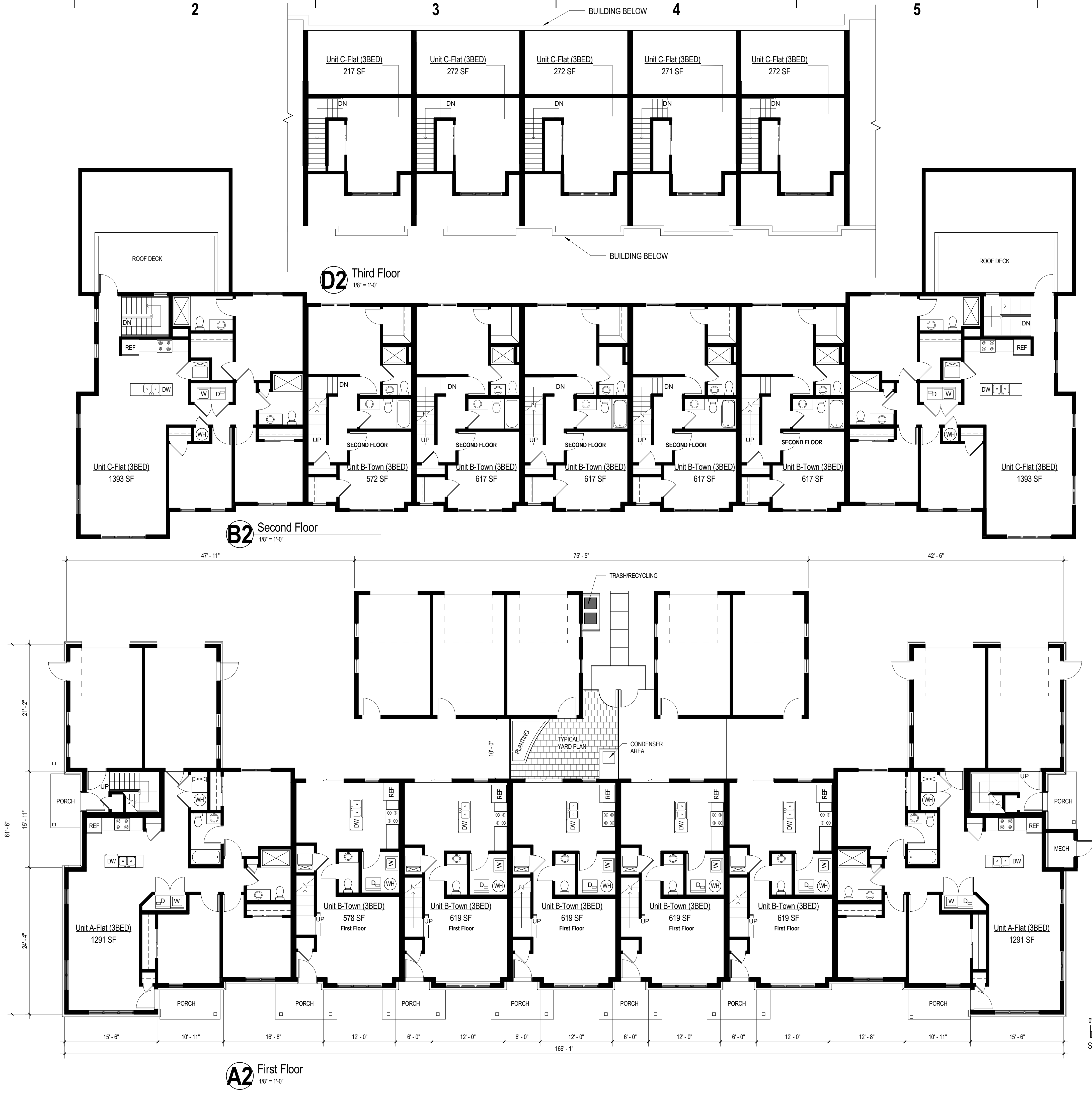
6

D

C

B

A



**epstein uhen : architects**  
 milwaukee 333 East Chicago Street  
 Milwaukee, Wisconsin 53202  
 tel 414 271 5350 fax 414 271 7794  
 madison 222 West Washington Ave, Suite 650  
 Madison, Wisconsin 53703  
 tel 608 442 5350 fax 608 442 6680



PROJECT INFORMATION  
**ALLIED  
 NEIGHBORHOOD  
 REDEVELOPMENT  
 PLAN-BUILDING C**  
 MADISON, WI



ISSUANCE AND REVISIONS

**B SD PROGRESS SET**

REVISIONS

#	DATE	DESCRIPTION

SHEET INFORMATION

**PROGRESS DOCUMENTS**  
 These documents are preliminary and may be subject to change. These are not final construction documents and should not be used for final bidding or construction-related purposes.

PROJECT MANAGER **JK**

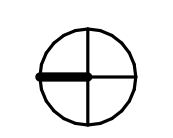
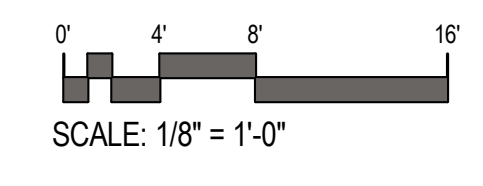
PROJECT NUMBER **607380-02**

DATE **JUNE 4, 2008**

FLOOR PLANS

**A130**

© Epstein Uhen Architects, Inc.





epstein uhen : architects

Milwaukee 333 East Chicago Street  
Milwaukee, Wisconsin 53202  
tel 414 271 5350 fax 414 271 7794  
D madison 222 West Washington Ave, Suite 650  
Madison, Wisconsin 53703  
tel 608 442 5350 fax 608 442 6680



SCHREIBER / ANDERSON  
ASSOCIATES, INC.  
7817 John Nolen Drive  
Madison, WI 53713  
Ph. 608.255.0800  
Fx. 608.255.7750  
www.saa-madison.com

PROJECT INFORMATION

ALLIED  
NEIGHBORHOOD  
REDEVELOPMENT  
PLAN-BUILDING B  
C MADISON, WI



ISSUANCE AND REVISIONS

B SD PROGRESS SET

REVISIONS

#	DATE	DESCRIPTION

SHEET INFORMATION

**PROGRESS DOCUMENTS**  
These documents are preliminary and may be subject to change. These are not final construction documents and should not be used for final bidding or construction-related purposes.

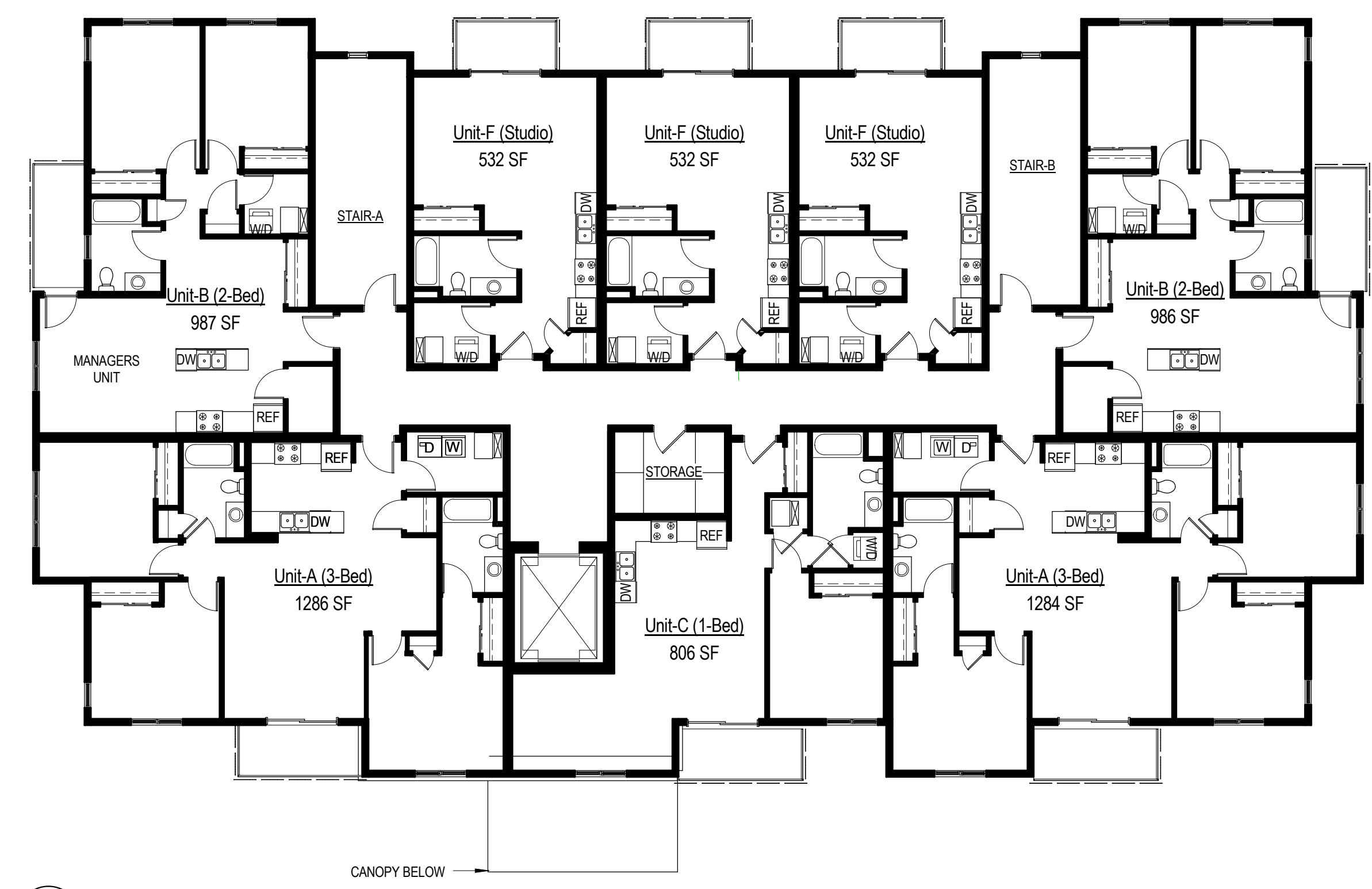
PROJECT MANAGER JK

PROJECT NUMBER 607380-02

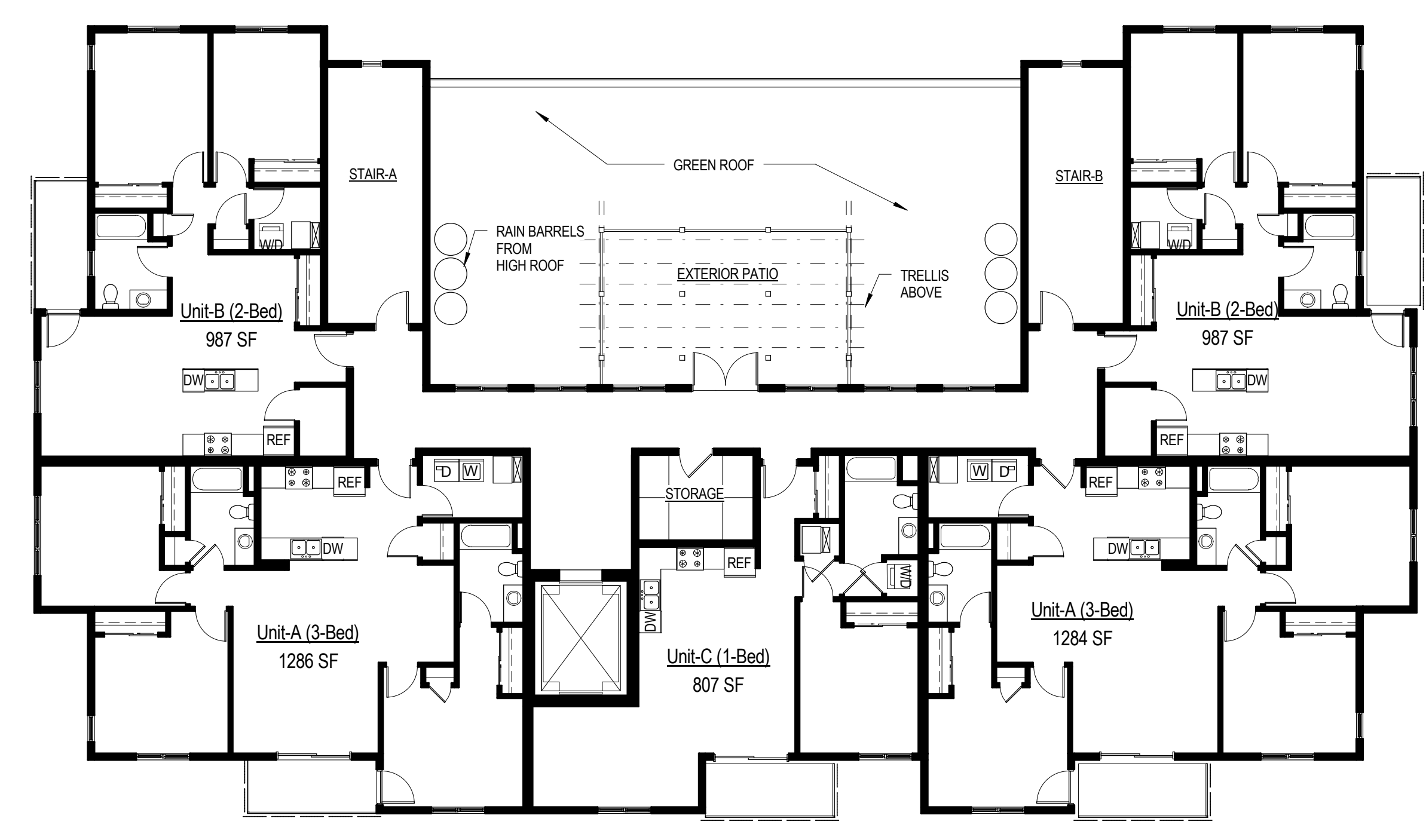
A DATE JUNE 4, 2008

FLOOR PLANS

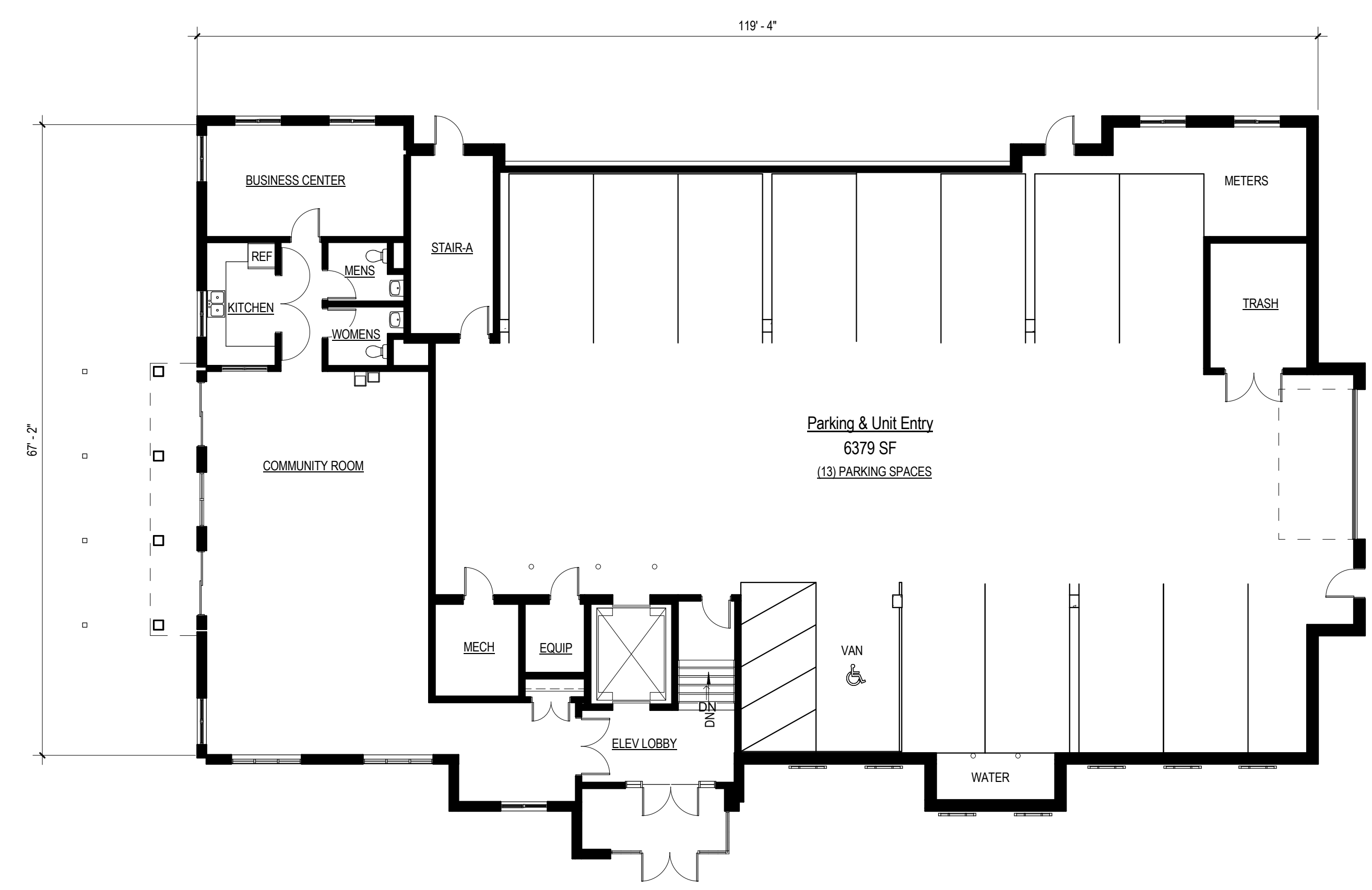
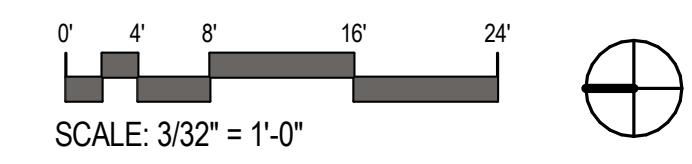
**A120**



C4 Second Floor  
3/32" = 1'-0"



A4 Third Floor  
3/32" = 1'-0"



A1 First Floor  
3/32" = 1'-0"

D

C

B

A

1

2

3

4

5

6

1

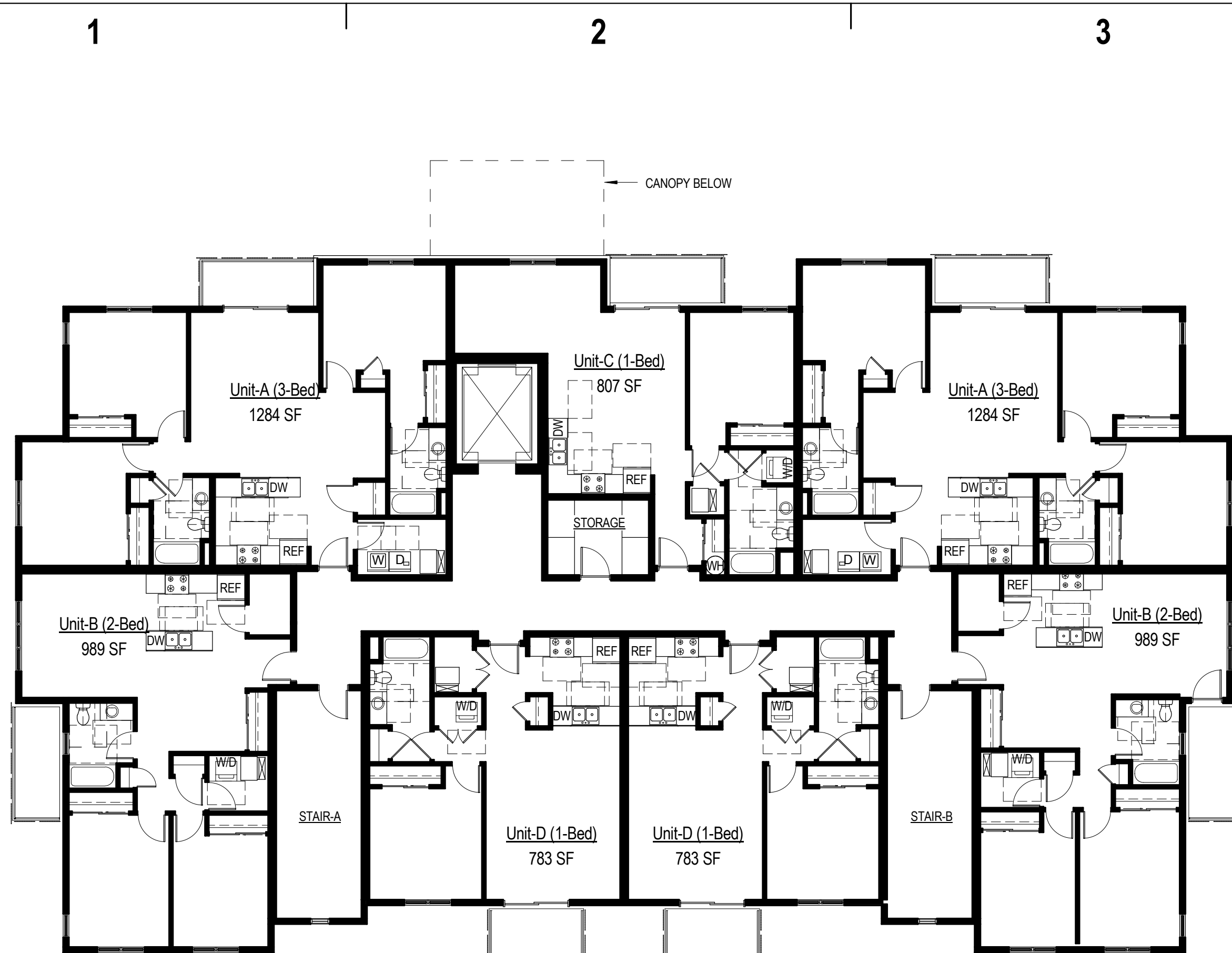
2

3

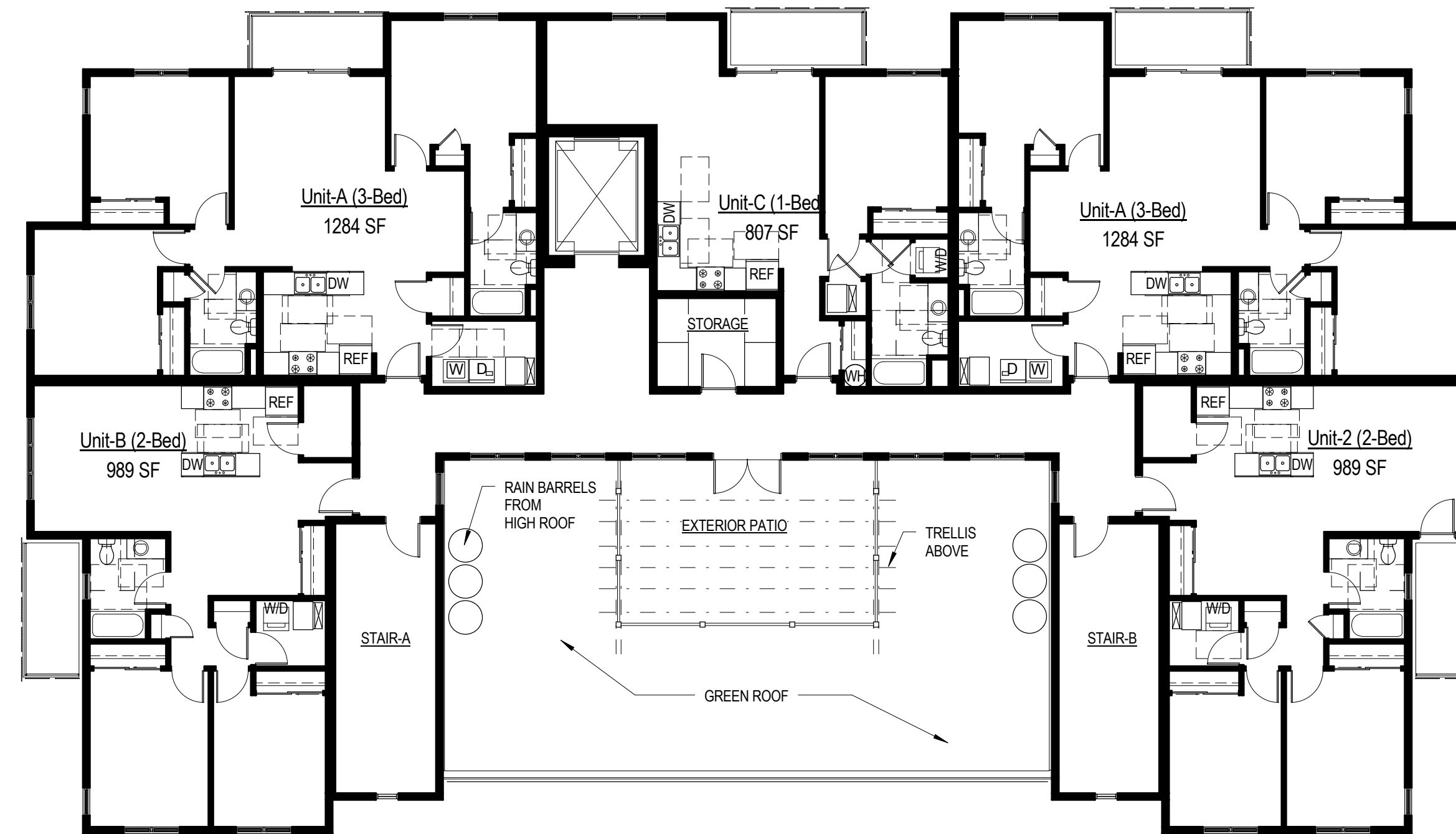
4

5

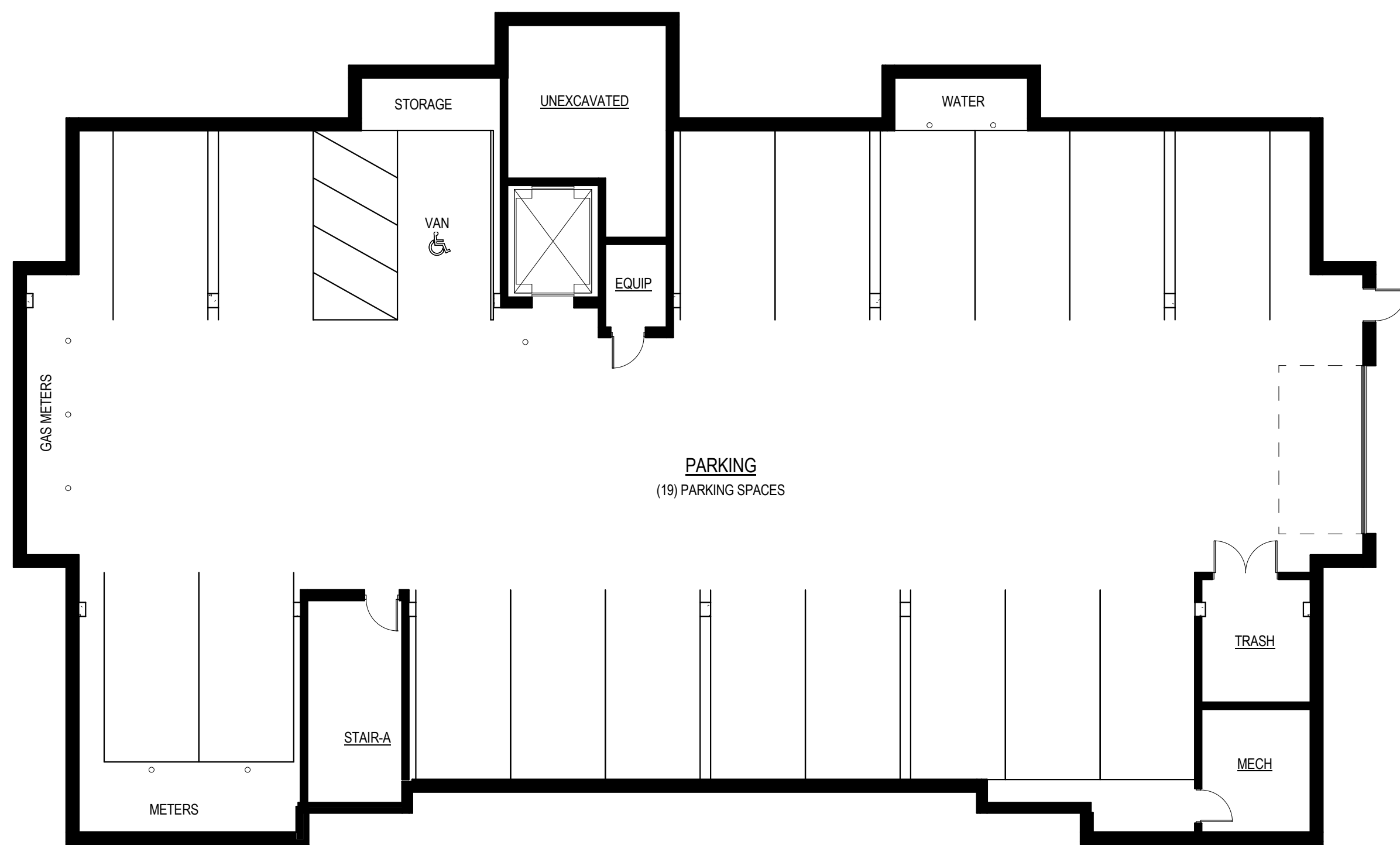
6



**C1** SECOND FLOOR PLAN  
3/32" = 1'-0"



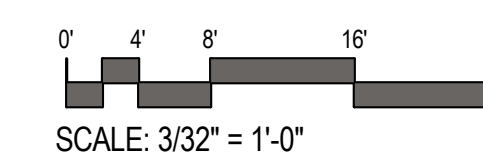
**C4** THIRD FLOOR  
3/32" = 1'-0"



**A1** PARKING LEVEL  
3/32" = 1'-0"



**A4** FIRST FLOOR PLAN  
3/32" = 1'-0"



**epstein uhen : architects**  
 Milwaukee 333 East Chicago Street  
 Milwaukee, Wisconsin 53202  
 tel 414 271 5350 fax 414 271 7794  
 Madison 222 West Washington Ave, Suite 650  
 Madison, Wisconsin 53703  
 tel 608 442 5350 fax 608 442 6680



**SAA**  
 SCHREIBER / ANDERSON  
 ASSOCIATES, INC.  
 7817 John Nolen Drive  
 Madison, WI 53713  
 Ph. 608.255.0800  
 Fax. 608.255.7750  
 www.saa-madison.com

**PROJECT INFORMATION**

**ALLIED  
 NEIGHBORHOOD  
 REDEVELOPMENT  
 PLAN - BUILDING A  
 MADISON, WI**



**ISSUANCE AND REVISIONS**

**B SD PROGRESS SET**

**REVISIONS**

#	DATE	DESCRIPTION
---	------	-------------

**SHEET INFORMATION**

**PROGRESS  
 DOCUMENTS**

These documents and may be submitted for review. These are not final construction documents and should not be used for final bidding or construction-related purposes.

PROJECT MANAGER JK

PROJECT NUMBER 607380-02

**A** DATE JUNE 4, 2008

**FLOOR PLANS**

**A110**

1

2

3

4

5

6

D

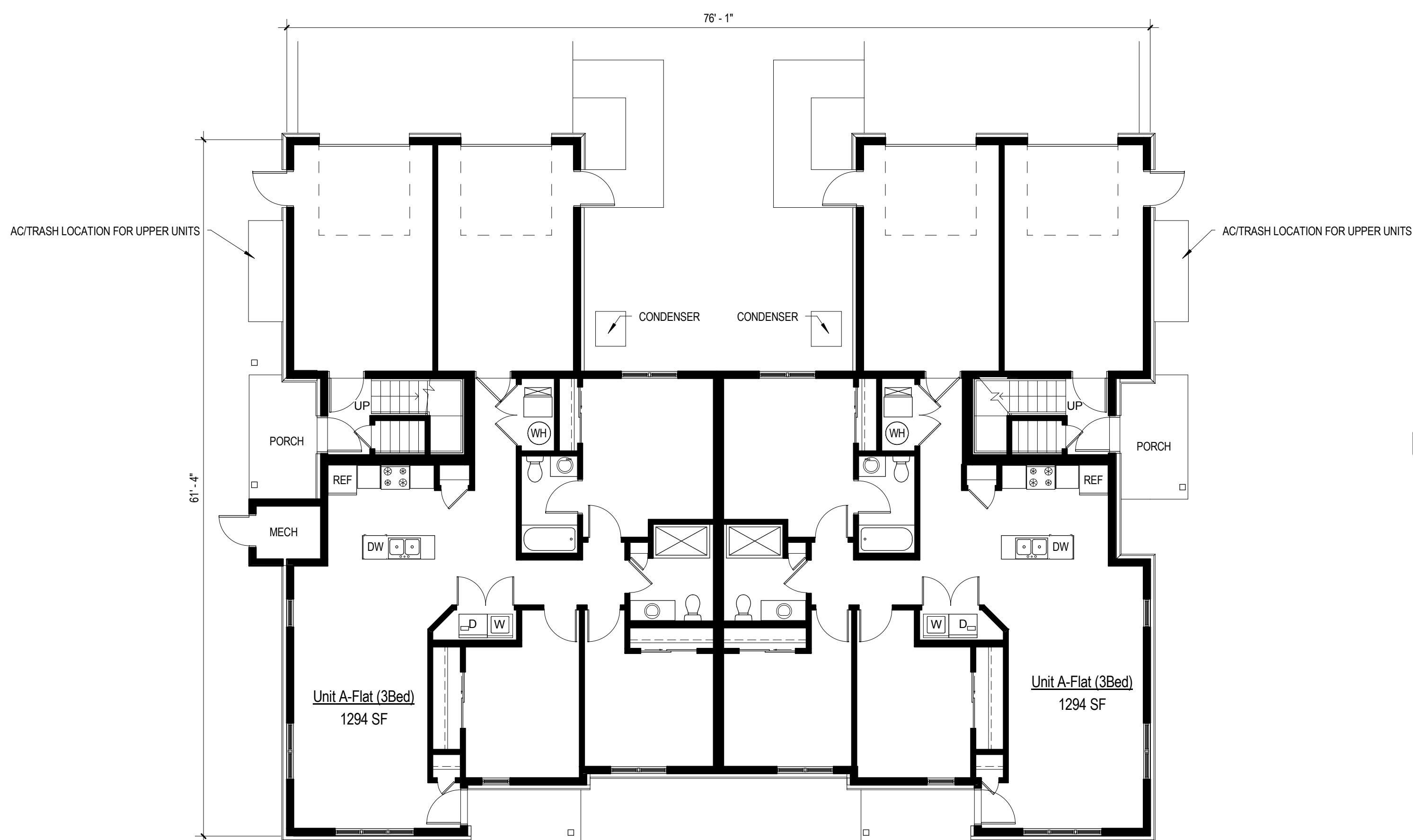
C

B

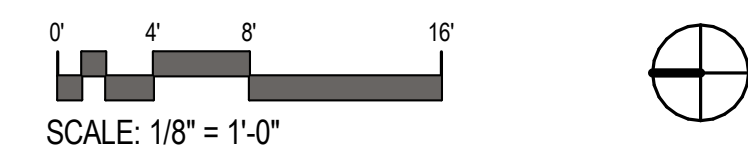
A



**1** Second Floor  
1/8" = 1'-0"



**A4** First Floor  
1/8" = 1'-0"



**eppstein uhen : architects**

milwaukee 333 East Chicago Street  
Milwaukee, Wisconsin 53202  
tel 414 271 5350 fax 414 271 7794  
madison 222 West Washington Ave, Suite 650  
Madison, Wisconsin 53703  
tel 608 442 5350 fax 608 442 6680



**SAA**  
SCHREIBER / ANDERSON  
ASSOCIATES, INC.

7817 John Nolen Drive  
Madison, WI 53713  
Ph: 608.255.0800  
Fx: 608.255.7750  
www.saa-madison.com

PROJECT INFORMATION

ALLIED  
NEIGHBORHOOD  
REDEVELOPMENT  
PLAN-BUILDING F  
MADISON, WI



ISSUANCE AND REVISIONS

**B** SD PROGRESS SET

REVISIONS

#	DATE	DESCRIPTION

SHEET INFORMATION

**PROGRESS  
DOCUMENTS**

These documents and may be submitted for construction. These are not final construction documents and should not be used for final bidding or construction-related purposes.

PROJECT MANAGER JK

PROJECT NUMBER 067380-02

**A** DATE June 4, 2008

FLOOR PLANS

**A150**