

STORM SEWER PLANT VALUE
(Schedule 'A' / Storm Structures)

The Meadowlands - Phase 5

53B2084

STRUCTURES

Description	Quantity	Unit	Unit Cost	Total Cost
H INLET	4	EA	\$ 2,560.00	\$ 10,240.00
Engineering @ 10%				\$ 1,024.00
Total Cost			\$ 2,816.00	\$ 11,264.00
3x3 SAS W/ H CASTING	4	EA	\$ 1,790.00	\$ 7,160.00
Engineering @ 10%				\$ 716.00
Total Cost			\$ 1,969.00	\$ 7,876.00
Engineering @ 10%				
Total Cost				
Engineering @ 10%				
Total Cost				
Engineering @ 10%				
Total Cost				
Engineering @ 10%				
Total Cost				
Engineering @ 10%				
Total Cost				
Engineering @ 10%				
Total Cost				
Engineering @ 10%				
Total Cost				
Engineering @ 10%				
Total Cost				
Engineering @ 10%				
Total Cost				
Engineering @ 10%				
Total Cost				
Engineering @ 10%				
Total Cost				
Engineering @ 10%				
Total Cost				
Engineering @ 10%				
Total Cost				
Engineering @ 10%				
Total Cost				
GRAND TOTAL COST				\$ 19,140.00

Total Storm Sewer Improvements

\$ 42,949.39

Prepared By: JD
Date: 2/7/2014

STORM SEWER PLANT VALUE
(Schedule 'A' / Storm Pipes)

The Meadowlands - Phase 5

53B2084

PIPES

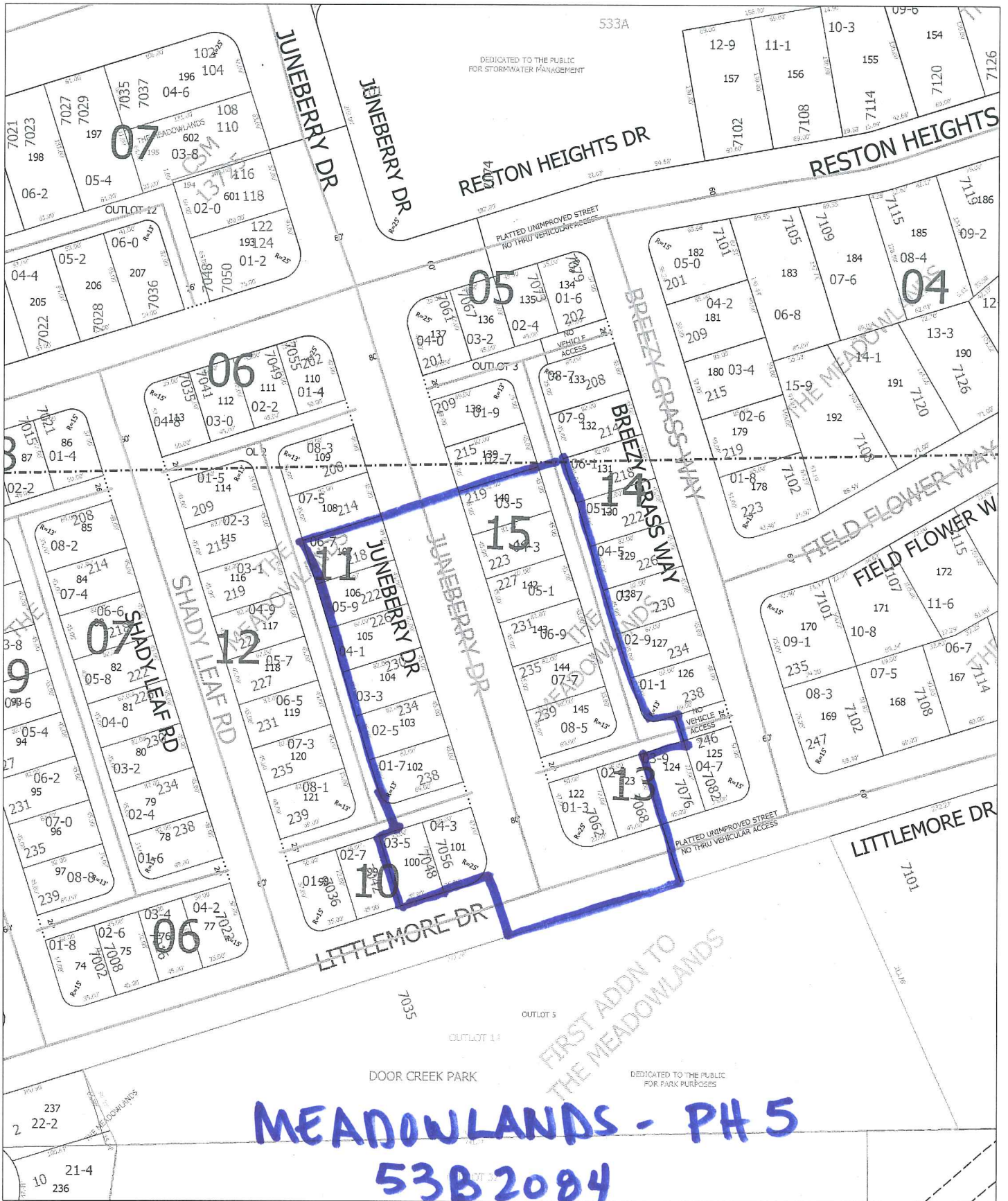
Description	Quantity	Unit	Unit Cost	Total Cost
12" RCP	84	LF	\$ 33.85	\$ 2,843.40
Engineering @ 10%				\$ 284.34
Total Cost			\$ 37.24	\$ 3,127.74
15" RCP	60	LF	\$ 32.40	\$ 1,944.00
Engineering @ 10%				\$ 194.40
Total Cost			\$ 35.64	\$ 2,138.40
18" RCP	316	LF	\$ 35.75	\$ 11,297.00
Engineering @ 10%				\$ 1,129.70
Total Cost			\$ 39.33	\$ 12,426.70
21" RCP	102	LF	\$ 39.55	\$ 4,034.10
Engineering @ 10%				\$ 403.41
Total Cost			\$ 43.51	\$ 4,437.51
24" RCP	36	LF	\$ 42.40	\$ 1,526.40
Engineering @ 10%				\$ 152.64
Total Cost			\$ 46.64	\$ 1,679.04
Engineering @ 10%				
Total Cost				
Engineering @ 10%				
Total Cost				
Engineering @ 10%				
Total Cost				
Engineering @ 10%				
Total Cost				
Engineering @ 10%				
Total Cost				
Engineering @ 10%				
Total Cost				
Engineering @ 10%				
Total Cost				
Engineering @ 10%				
Total Cost				
Engineering @ 10%				
Total Cost				
Engineering @ 10%				
Total Cost				
GRAND TOTAL COST				\$ 23,809.39

Prepared By: JD
Date: 2/7/2014

STREET PLANT VALUE
DOES NOT INCLUDE BITUMINOUS SURFACE
WITH SIDEWALK

THE MEADOWLANDS PHASE 5
53B2084

STREET	Description	From	To	Quantity	Unit	Unit Cost	Total Cost
	Juneberry Drive	397 FT N OF LITTLEMORE DR	LITTLEMORE DR	397	LF	\$ 121.29	\$ 48,151.69
	40' WIDE	LITTLEMORE DR					
	MS LINK NO. 21228						
	LITTLEMORE DR	JUNEBERRY DR	136 FT E OF JUNEBERRY DR	136	LF	\$ 97.03	\$ 13,196.23
	32' WIDE						
	MS LINK NO. 21237						
	SHADY LEAF ALLEY	JUNEBERRY DR	98 FT W OF JUNEBERRY DR	98	LF	\$ 36.39	\$ 3,565.89
	12' WIDE						
	MS LINK NO. 22856						
	JUNEBERRY DRIVE ALLEY	JUNEBERRY DR	107 FT E OF JUNEBERRY DR	107	LF	\$ 36.39	\$ 3,893.37
	12' WIDE						
	MS LINK NO. 22861						
	JUNEBERRY DRIVE ALLEY	SOUTH LINE OF LOT 128	286 FT NORTH	286	LF	\$ 36.39	\$ 10,406.59
	12' WIDE		(NORTH LINE OF LOT 140)				
	MS LINK NO. 22860						
GRAND TOTAL COST							\$ 79,213.77



Time: 10/7/2014 10:59:35 AM
 Session: C:\GTVIEWER_Sessions\Janet2.gts

City of Madison, WI - GIS/Mapping data

Printed By: enjss

Disclaimer: The City makes no representation about the accuracy of these records and shall not be liable for any damages