

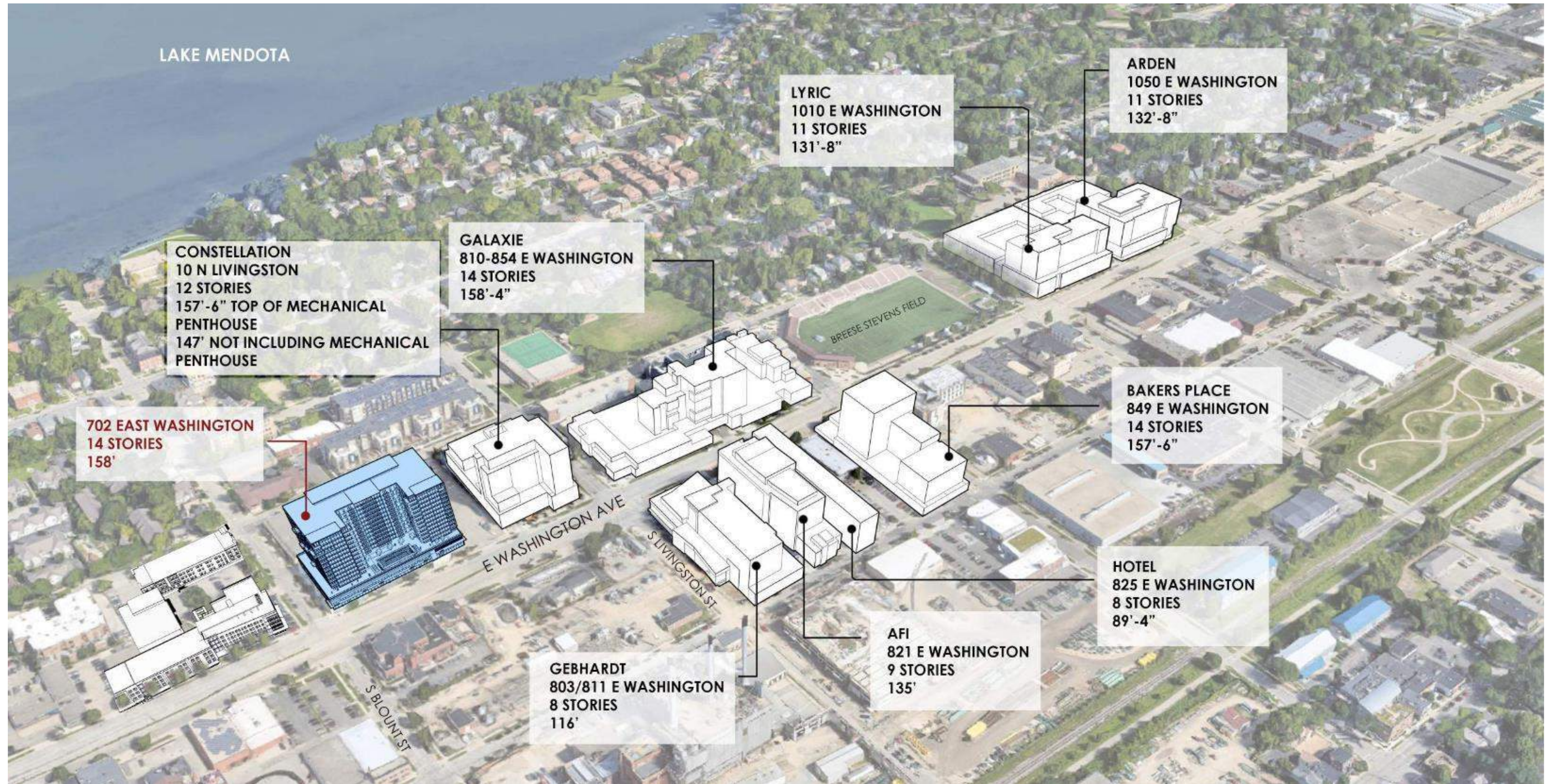
# 702 East Washington - Redevelopment

UDC Presentation  
*Context Map*



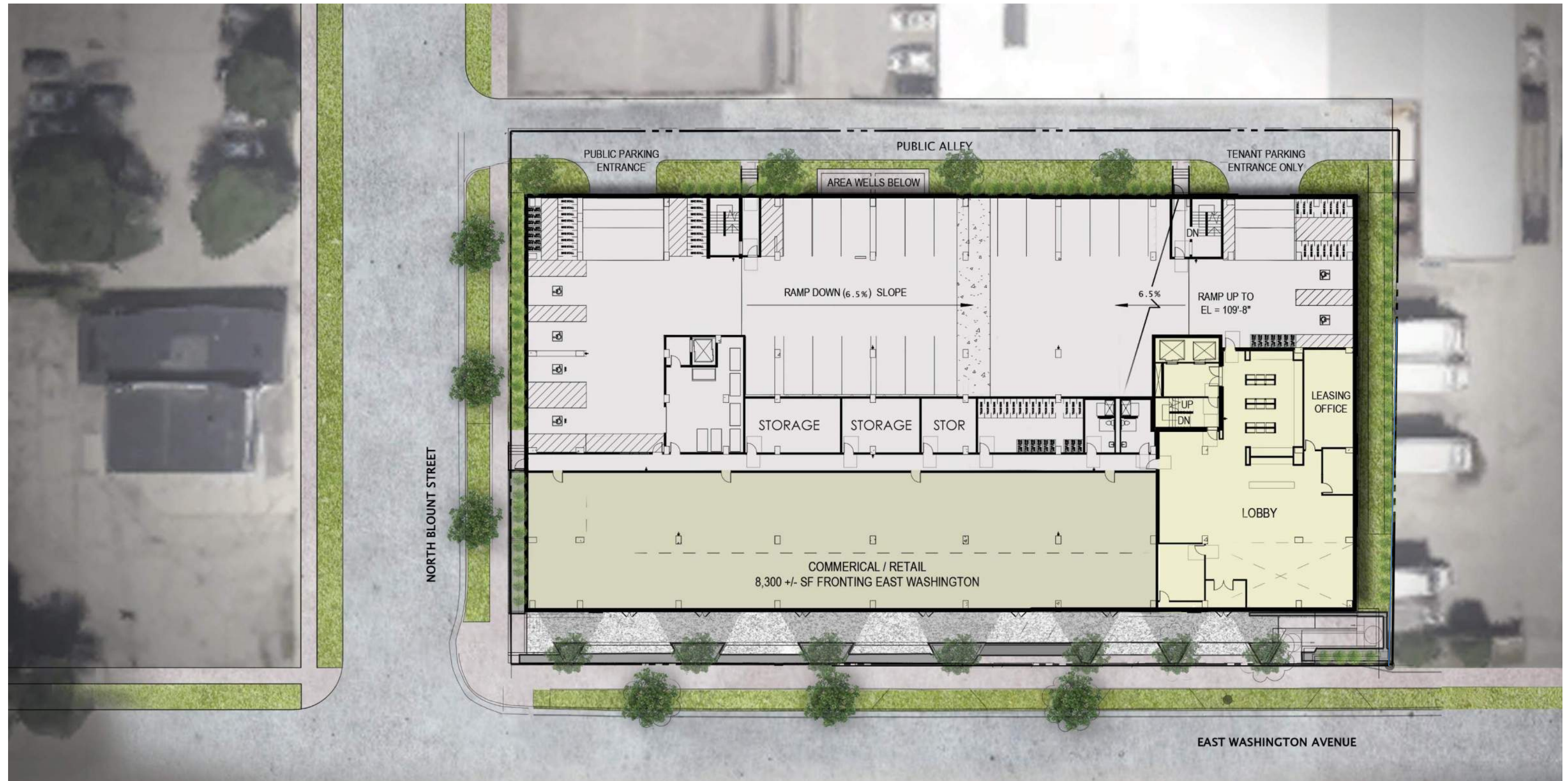
# 702 East Washington - Redevelopment

UDC Presentation  
Context Map



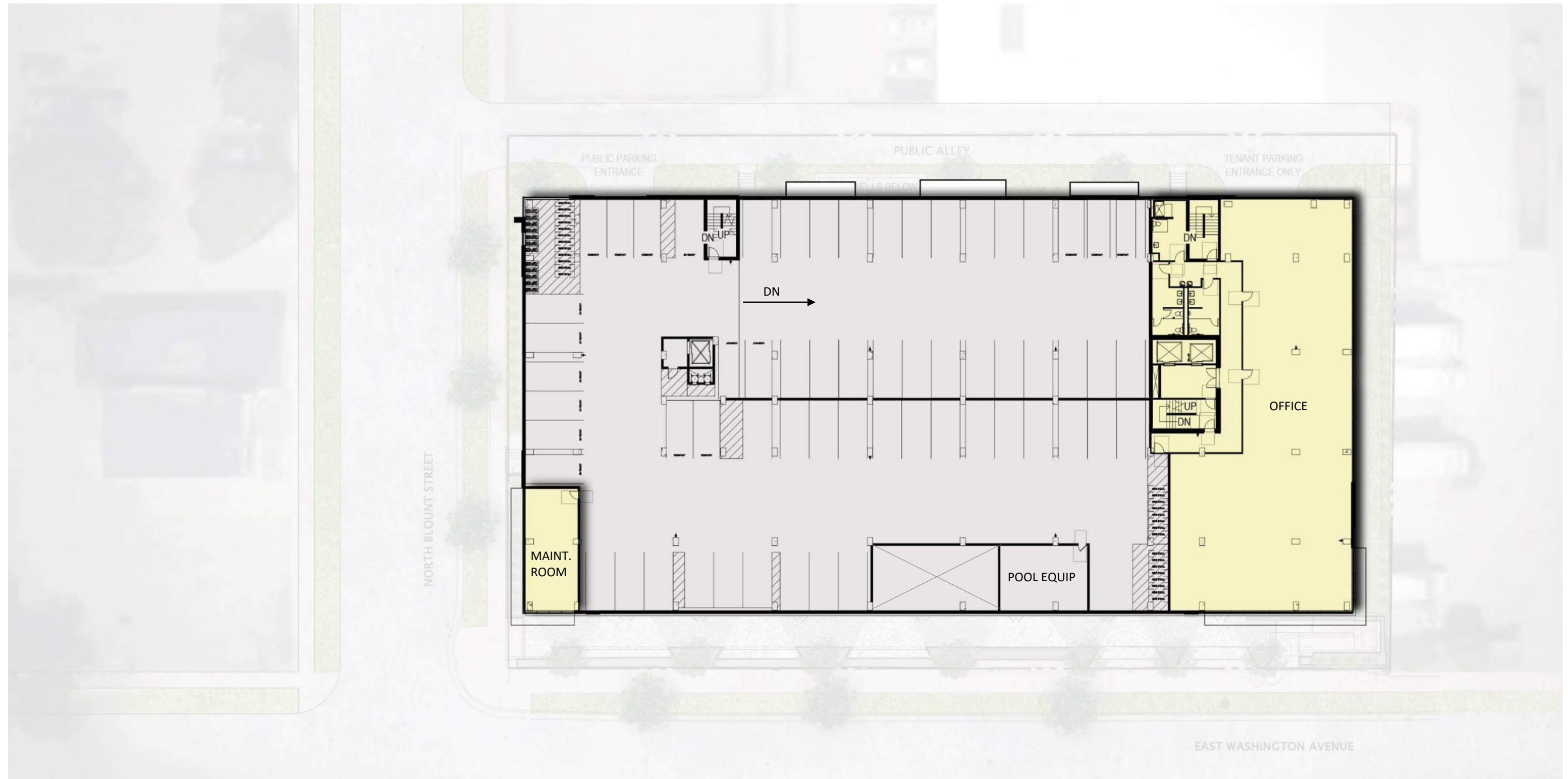
# 702 East Washington - Redevelopment

UDC Presentation  
First Floor Plan



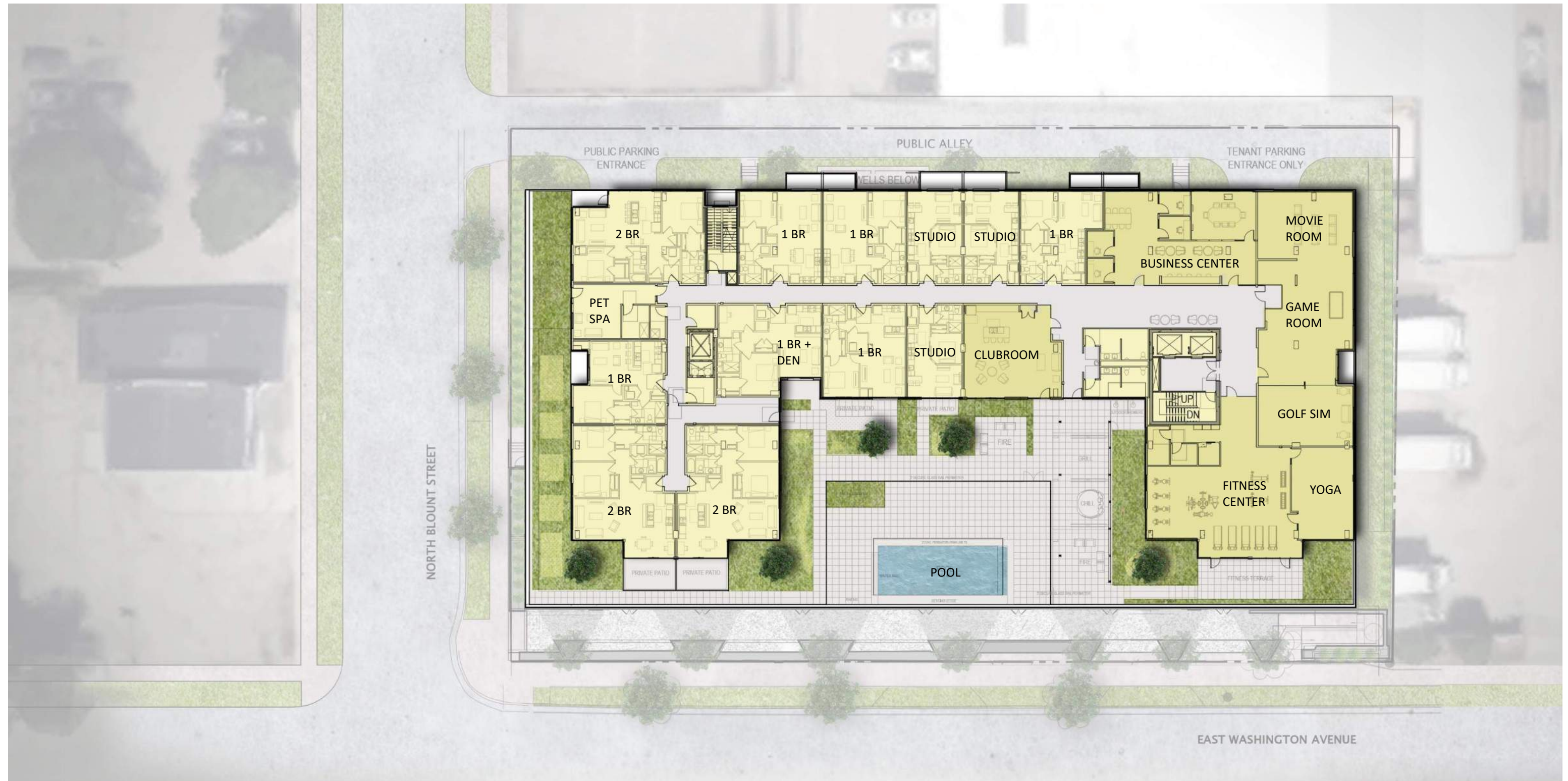
# 702 East Washington - Redevelopment

UDC Presentation  
Second Floor Plan



# 702 East Washington - Redevelopment

UDC Presentation  
Third Floor Plan



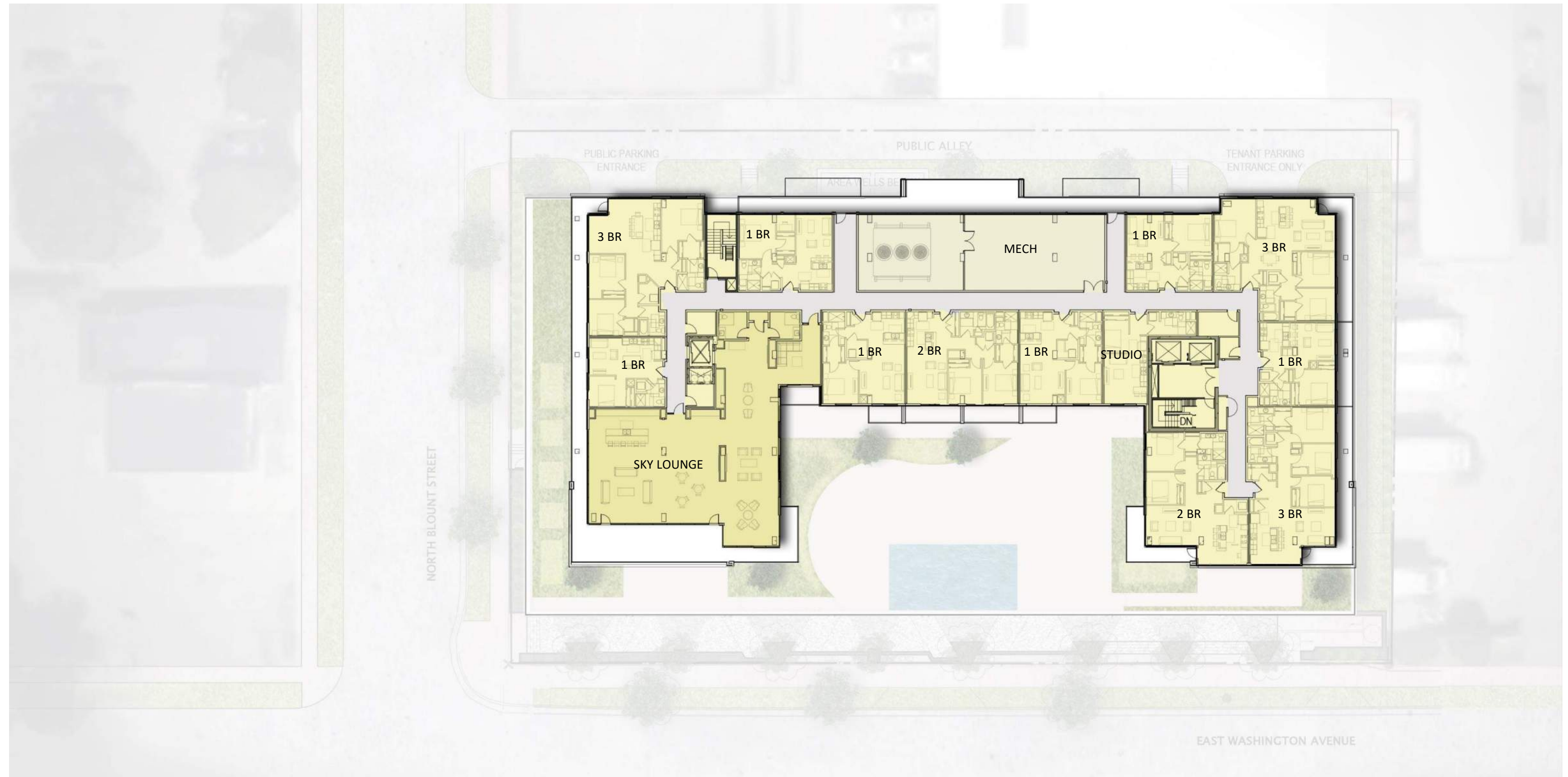
# 702 East Washington - Redevelopment

UDC Presentation  
*Typical Floor Plan*



# 702 East Washington - Redevelopment

UDC Presentation  
Fourteenth Floor Plan



# 702 East Washington - Redevelopment

UDC Presentation  
South Elevation

282' = 1032' CAPITOL VIEW LIMIT







702

SIGNAGE

SIGNAGE

SIGNAGE

SIGNAGE

SIGNAGE

SIGNAGE

LOBBY



JLA  
ARCHITECTS



SIGNAGE

702



SIGNAGE

702

SIGNAGE

SIGNAGE

JTA PROJECTS



702

SIGNAGE



JLA  
ARCHITECTS





JLA  
ARCHITECTS



JLA  
ARCHITECTS



7  
0  
2





JLA

SIGNAGE



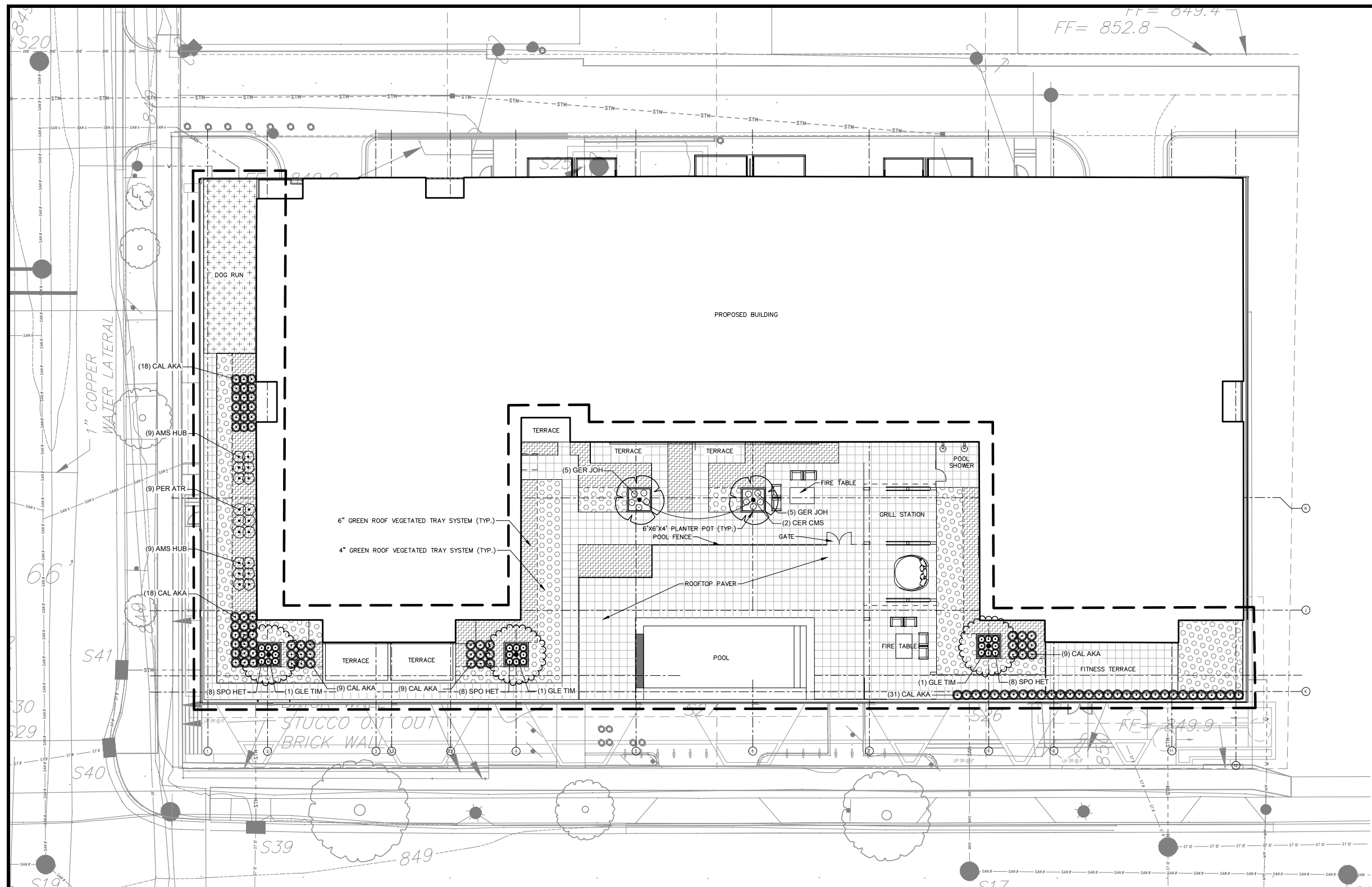
JLA  
ARCHITECTS



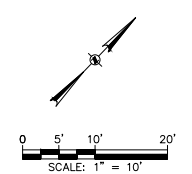
**JLA**  
ARCHITECTS

**THANK YOU**

**JLA-AP.COM**



FF = 852.8  
FF = 849.4



**NOTICE:**  
In accordance with Wisconsin statute 182.0175, damage to transmission facilities, excavator shall be solely responsible to provide advance notice to the designated "ONE CALL SYSTEM" not less than three working days prior to commencement of any excavation required to perform work contained on this drawing, and further, excavator shall comply with all other requirements of this statute relative to excavator's work.

**DISCLAIMER:**  
The underground utilities shown have been located from field survey information and existing drawings. GRAEF makes no guarantee that the underground utilities shown comprise all such utilities in the area, either in service or abandoned. GRAEF further does not warrant that the underground utilities shown are in the exact location indicated. GRAEF has not physically located the underground utilities.

- LANDSCAPE LEGEND**
- LIMIT OF LANDSCAPE CONSTRUCTION
  - 4" GREEN ROOF VEGETATED TRAY SYSTEM
  - 6" GREEN ROOF VEGETATED TRAY SYSTEM
  - ROOF DECK PAVER SYSTEM - 24"x24" SQUARE PAVER COLOR: GREY
  - K9GRASS SYNTHETIC TURF

**PLANT SCHEDULE**

SYMBOL	CODE	BOTANICAL NAME	COMMON NAME	SIZE	SPACING	MATURE SIZE	QTY
<b>ORNAMENTAL TREES</b>							
	CER CMS	<i>Cercis canadensis 'Minnesota Strain'</i>	Minnesota Strain Eastern Redbud	6" multi stem B&B	as shown	20'h x 20'w	2
<b>SHADE TREES</b>							
	GLE TIM	<i>Gleditsia triacanthos inermis 'Impcoale'</i>	Imperial Honeylocust	2.5" B&B	as shown	30'-35'h x 30'-35'w	3
<b>ORNAMENTAL GRASSES &amp; SEDGES</b>							
	CAL AKA	<i>Calamagrostis x acutiflora 'Karl Foerster'</i>	Karl Foerster Feather Reed Grass	1 gal. - Container	3'	5' h x 30" w	94
	SPO HET	<i>Sporobolus heterolepis</i>	Prairie Dropseed	1 gal.	2'	2'-3' h x 2' w	24
<b>PERENNIALS</b>							
	AMS HUB	<i>Amsonia hubrichtii</i>	Arkansas Bluestar	1 gal. - Container	3'	3'h x 3'w	12
	GER JOH	<i>Geranium x 'Johnson's Blue'</i>	Johnson's Blue Geranium	1 gal. - Container	18"	18" h x 2' w	10
	PER ATR	<i>Perovskia atriplicifolia</i>	Russian Sage	1 gal. - Container	4'	3'h x 3'w	6



JLA PROJECT NUMBER: W22-0106



1010 East Washington Avenue,  
Suite 202  
Madison, WI 53703  
608 / 242 1550

www.graef-usa.com

702 EAST WASHINGTON AVENUE MIXED-USE DEVELOPMENT

100% DESIGN DEVELOPMENT SUBMITTAL

**PROGRESS DOCUMENTS**

These documents reflect progress and intent and may be subject to change, including additional detail. These are not final construction documents and should not be used for final bidding or construction-related purposes.

DATE OF ISSUANCE: JANUARY 05, 2024

**REVISION SCHEDULE**

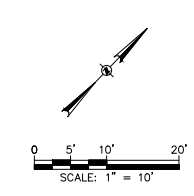
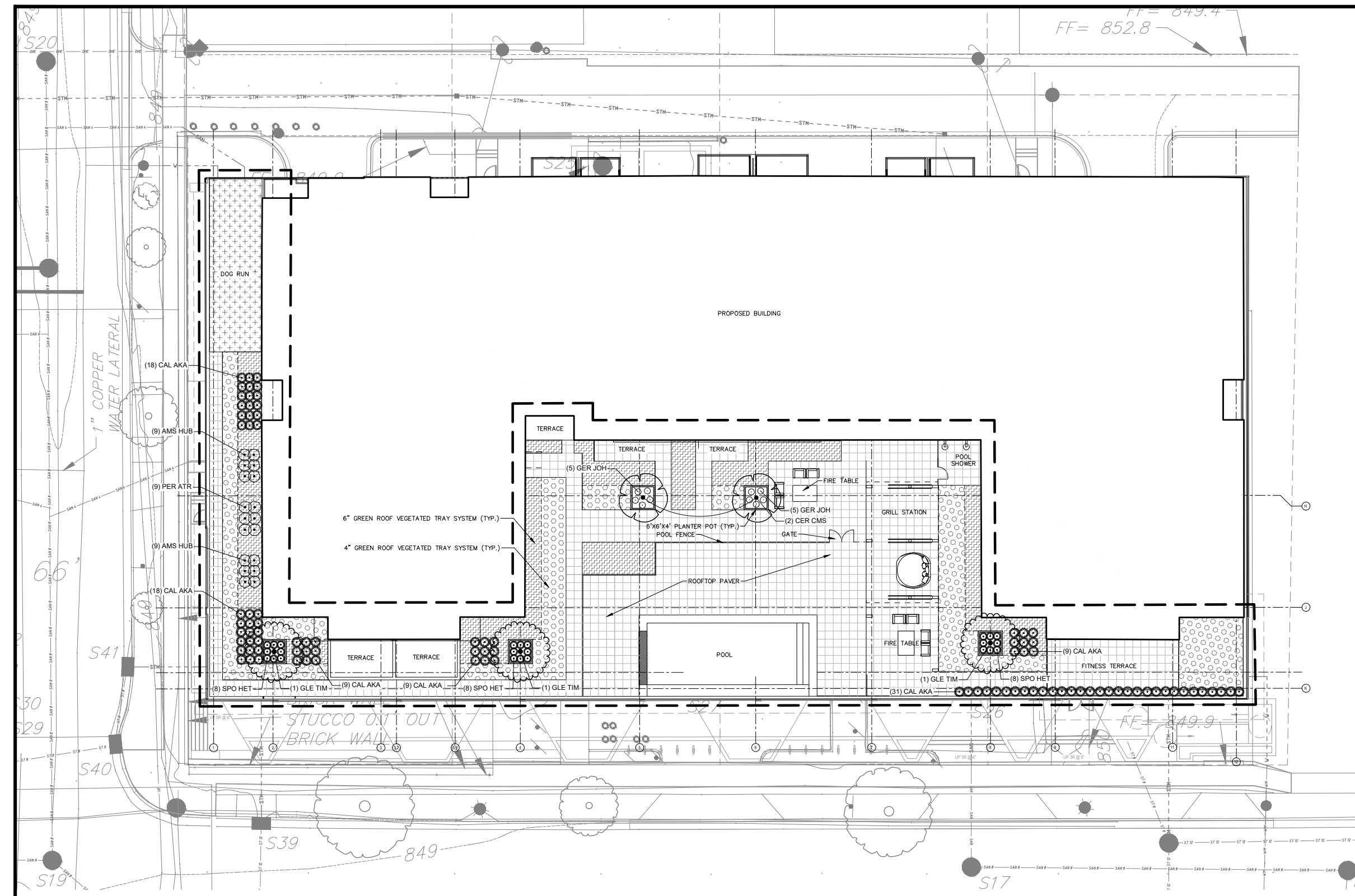
Mark	Description	Date

SHEET TITLE

**COURTYARD PLAN**

SHEET NUMBER

**L101**



FF = 849.4  
FF = 852.8

**NOTICE:**  
In accordance with Wisconsin statute 182.0175, damage to transmission facilities, excavator shall be solely responsible to provide advance notice to the designated "ONE CALL SYSTEM" not less than three working days prior to commencement of any excavation required to perform work contained on this drawing, and further, excavator shall comply with all other requirements of this statute relative to excavator's work.

**DISCLAIMER:**  
The underground utilities shown have been located from field survey information and existing drawings. GRAEF makes no guarantee that the underground utilities shown comprise all such utilities in the area, either in service or abandoned. GRAEF further does not warrant that the underground utilities shown are in the exact location indicated. GRAEF has not physically located the underground utilities.

- LANDSCAPE LEGEND**
- LIMIT OF LANDSCAPE CONSTRUCTION
  - 4" GREEN ROOF VEGETATED TRAY SYSTEM
  - 6" GREEN ROOF VEGETATED TRAY SYSTEM
  - ROOF DECK PAVER SYSTEM - 24"x24" SQUARE PAVER COLOR: GREY
  - K9GRASS SYNTHETIC TURF

**PLANT SCHEDULE**

SYMBOL	CODE	BOTANICAL NAME	COMMON NAME	SIZE	SPACING	MATURE SIZE	QTY
<b>ORNAMENTAL TREES</b>							
	CER CMS	<i>Cercis canadensis</i> 'Minnesota Strain'	Minnesota Strain Eastern Redbud	6' multi stem B&B	as shown	20'h x 20'w	2
<b>SHADE TREES</b>							
	GLE TIM	<i>Gleditsia triacanthos inermis</i> 'Impcole'	Imperial Honeylocust	2.5" B&B	as shown	30'-35'h x 30'-35'w	3
<b>ORNAMENTAL GRASSES &amp; SEDGES</b>							
	CAL AKA	<i>Calamagrostis x acutiflora</i> 'Karl Foerster'	Karl Foerster Feather Reed Grass	1 gal. - Container	3"	5' h x 30' w	94
	SPO HET	<i>Sporobolus heterolepis</i>	Prairie Dropseed	1 gal.	2"	2'-3'h x 2'w	24
<b>PERENNIALS</b>							
	AMS HUB	<i>Amsonia hubrichtii</i>	Arkansas Bluestar	1 gal. - Container	3"	3'h x 3'w	12
	GER JOH	<i>Geranium x 'Johnson's Blue'</i>	Johnson's Blue Geranium	1 gal. - Container	18"	18'h x 2'w	10
	PER ATR	<i>Perovskia atriplicifolia</i>	Russian Sage	1 gal. - Container	4"	3'h x 3'w	6



JLA PROJECT NUMBER: W22-0106



1010 East Washington Avenue,  
Suite 202  
Madison, WI 53703  
608 / 242.1550

www.graef-usa.com

**702 EAST WASHINGTON AVENUE MIXED-USE DEVELOPMENT**

100% DESIGN DEVELOPMENT SUBMITTAL

**PROGRESS DOCUMENTS**

These documents reflect progress and intent and may be subject to change, including additional detail. These are not final construction documents and should not be used for final bidding or construction-related purposes.

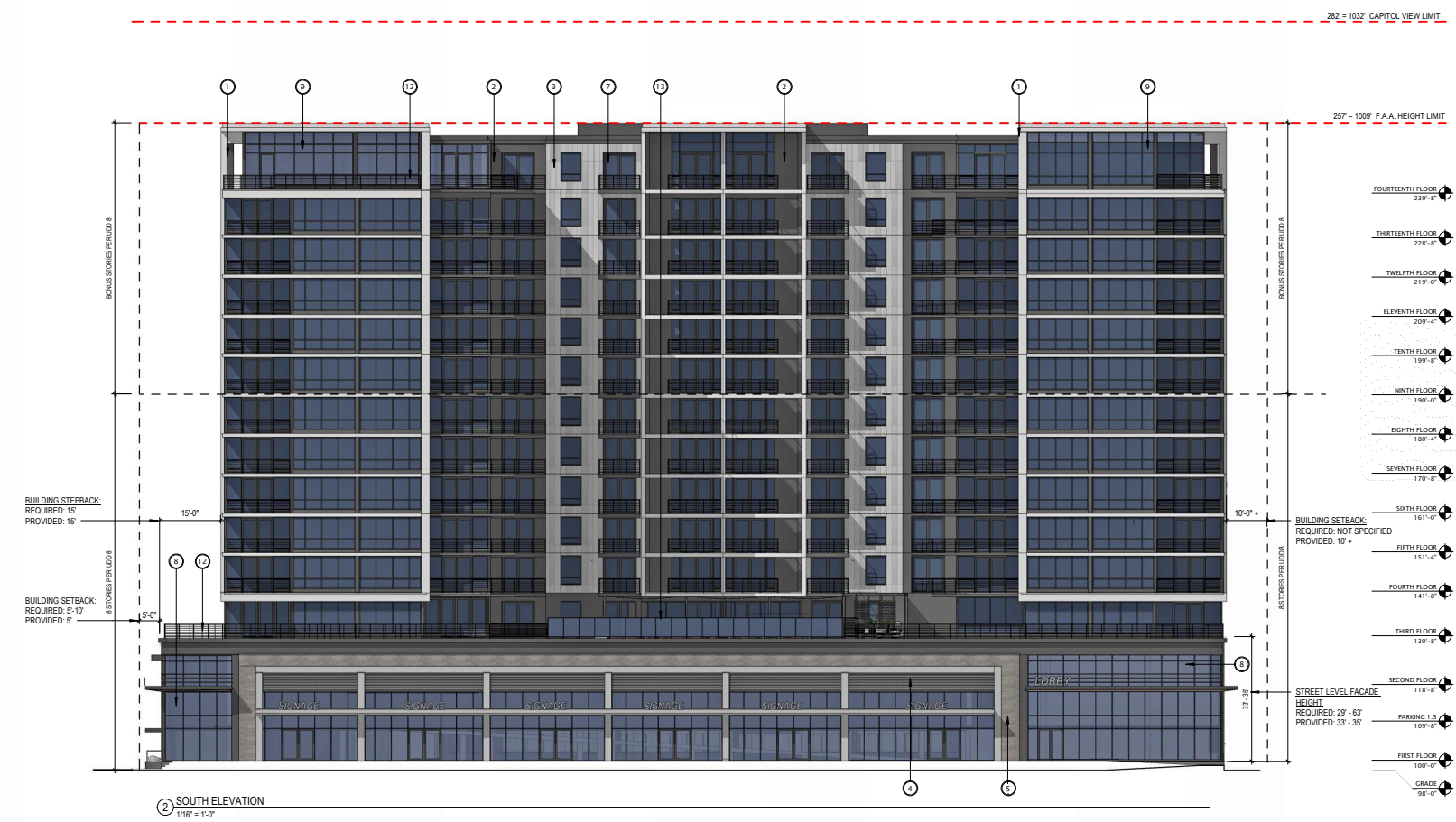
DATE OF ISSUANCE: JANUARY 05, 2024

**REVISION SCHEDULE**

Mark	Description	Date

**COURTYARD PLAN**

SHEET NUMBER  
**L101**

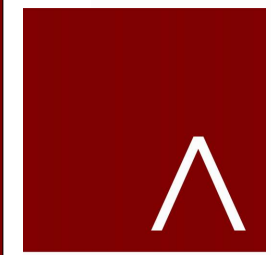


**ELEVATION NOTES**

- REVIEWED FOR EXTERIOR FINISHES AND AESTHETIC DESIGN INTENT ONLY. ASSEMBLIES AND PERFORMANCE NOT REVIEWED.
- G.C. TO PROVIDE MOCKUPS OF EACH EXTERIOR WALL MATERIAL/ASSEMBLIES.
- G.C. TO SUBMIT CURTAINWALL VISION GLASS AND SPANDREL GLASS SAMPLES FOR REVIEW AND APPROVAL.
- VERIFY BIRD SAFE GLASS PATTERN.
- PROVIDE ACM REVEALS AT ACM - NO WET SEALS.
- SUBMIT SCHEMATIC PANEL SYSTEM JOINT LAYOUT TO ARCHITECT FOR REVIEW AND APPROVAL.

**EXTERIOR MATERIALS SCHEDULE**

MARK	DESCRIPTION
1	METAL PANEL 1
2	METAL PANEL 2
3	METAL PANEL 3
4	METAL PANEL 4
5	BRICK 1
6	STONE
7	ALUMINUM PATIO DOOR
8	ALUMINUM WINDOW FRAMING SYSTEM
9	ALUMINUM WINDOW WALL
10	PERFORATED METAL PANEL
11	GREEN SPACE WALL SYSTEM
12	GLAZED RAIL ASSEMBLY
13	GLASS RAIL ASSEMBLY
14	PERISCOPE
15	CONCRETE PLANTER BOX
16	VENTILATION LOUVERS



**JLA**  
ARCHITECTS  
MADISON | MILWAUKEE | DENVER  
JLA-AP.COM

JLA PROJECT NUMBER: W22-0106

702 EAST WASHINGTON AVENUE MIXED-USE DEVELOPMENT

CITY OF MADISON LAND-USE & URBAN DESIGN COMMISSION SUBMITTAL

**PROGRESS DOCUMENTS**  
These documents reflect progress and intent and may be subject to change, including additional detail. These are not final construction documents and should not be used for final bidding or construction-related purposes.

DATE OF ISSUANCE: JANUARY 5, 2024

**REVISION SCHEDULE**

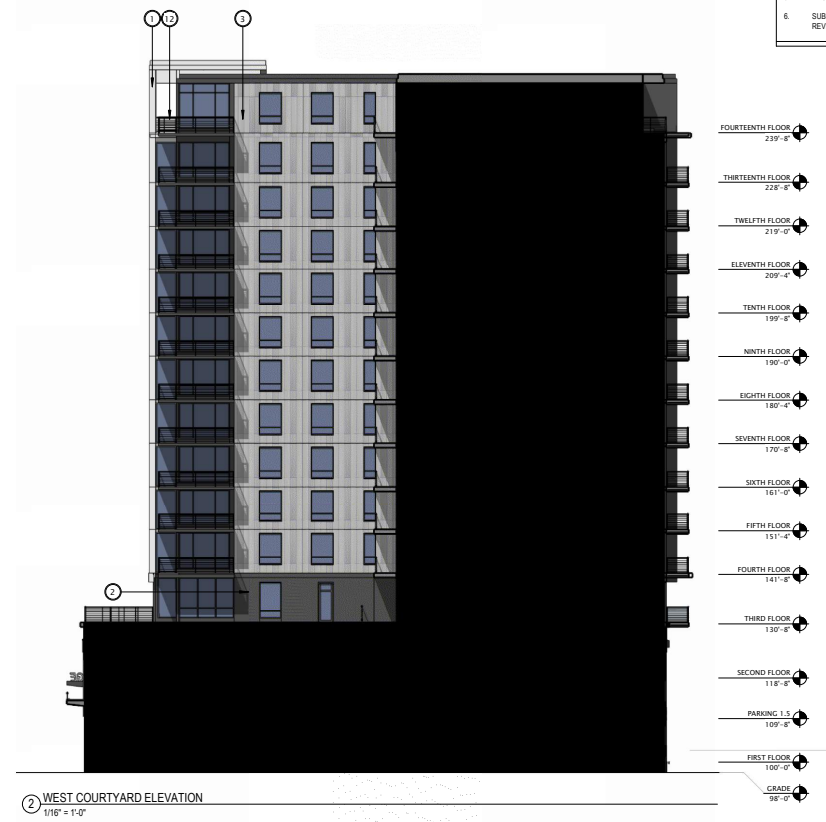
Mark	Description	Date

SHEET TITLE  
**EXTERIOR ELEVATIONS**

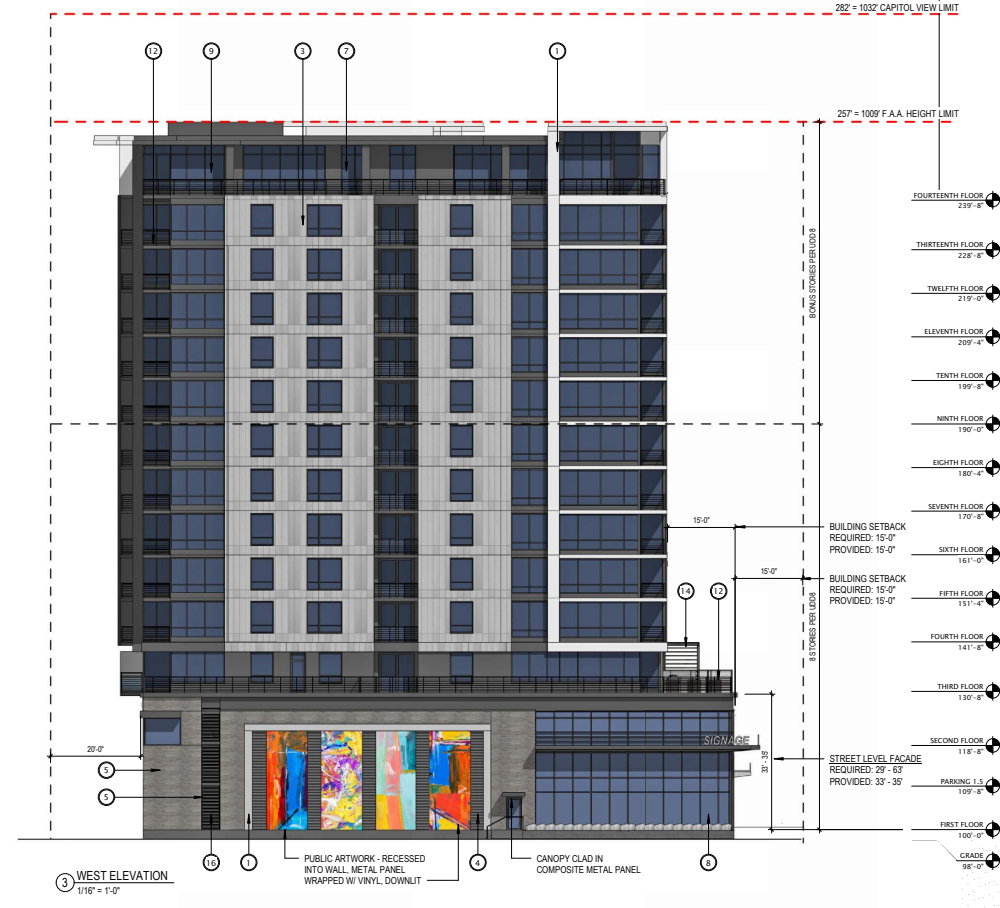
SHEET NUMBER  
**A200**



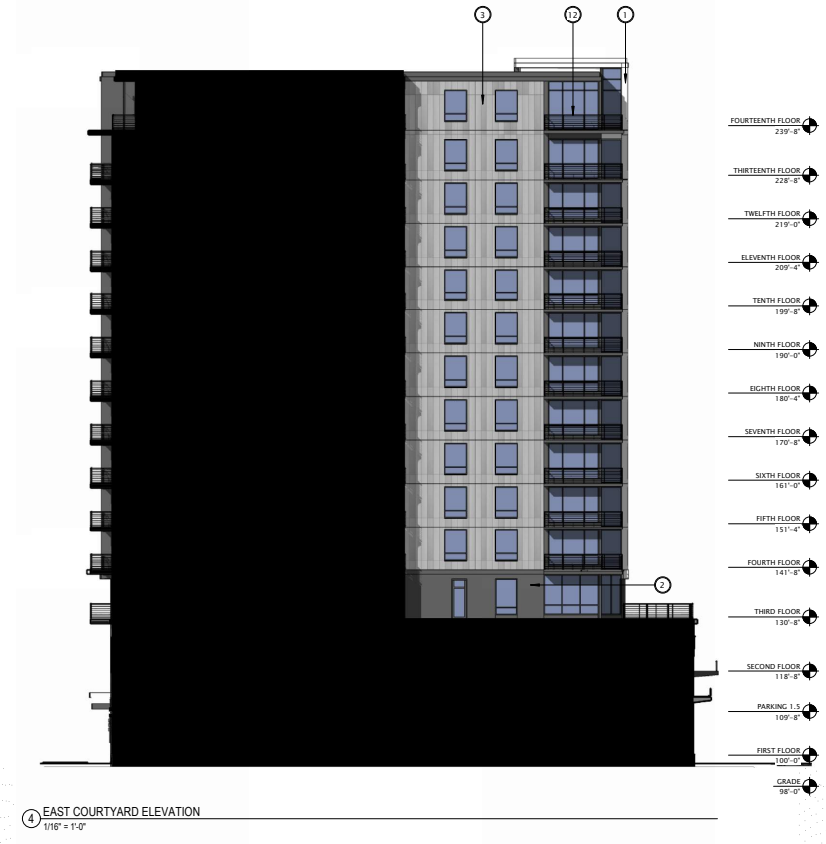
1 EAST ELEVATION  
1/16" = 1'-0"



2 WEST COURTYARD ELEVATION  
1/16" = 1'-0"



3 WEST ELEVATION  
1/16" = 1'-0"



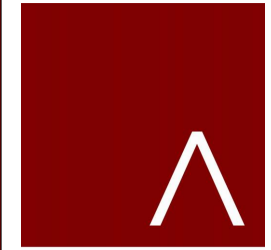
4 EAST COURTYARD ELEVATION  
1/16" = 1'-0"

ELEVATION NOTES

1. REVIEWED FOR EXTERIOR FINISHES AND AESTHETIC DESIGN INTENT ONLY. ASSEMBLIES AND PERFORMANCE NOT REVIEWED.
2. G.C. TO PROVIDE MOCKUPS OF EACH EXTERIOR WALL MATERIAL ASSEMBLIES.
3. G.C. TO SUBMIT CURTAINWALL VISION GLASS AND SPANDREL GLASS SAMPLES FOR REVIEW AND APPROVAL.
4. VERIFY BIRD-SAFE GLASS PATTERN.
5. PROVIDE ACM REVEALS AT ACM - NO WET SEALS.
6. SUBMIT SCHEMATIC PANEL SYSTEM JOINT LAYOUT TO ARCHITECT FOR REVIEW AND APPROVAL.

EXTERIOR MATERIALS SCHEDULE

MARK	DESCRIPTION
1	METAL PANEL 1
2	METAL PANEL 2
3	METAL PANEL 3
4	METAL PANEL 4
5	BRICK
6	STONE
7	ALUMINUM PATIO DOOR
8	ALUMINUM WINDOW FRAMING SYSTEM
9	ALUMINUM WINDOW WALL
10	PERFORATED METAL PANEL
11	GRASS GRACE WALL SYSTEM
12	GLASS RAIL ASSEMBLY
13	GLASS RAIL ASSEMBLY
14	PERGOLA
15	CONCRETE PLANTER BOX
16	VENTILATION LOUVERS



**JLA**  
ARCHITECTS  
MADISON | MILWAUKEE | DENVER  
JLA-AP.COM

JLA PROJECT NUMBER: W22-0106

702 EAST WASHINGTON AVENUE MIXED-USE DEVELOPMENT

CITY OF MADISON LAND-USE & URBAN DESIGN COMMISSION SUBMITTAL

PROGRESS DOCUMENTS

These documents reflect progress and intent and may be subject to change, including additional detail. These are not final construction documents and should not be used for final bidding or construction-related purposes.

DATE OF ISSUANCE: JANUARY 5, 2024

REVISION SCHEDULE

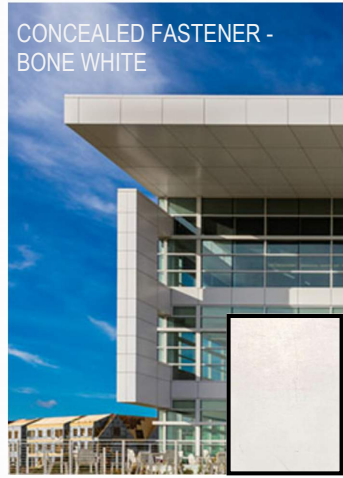
Mark	Description	Date

SHEET TITLE

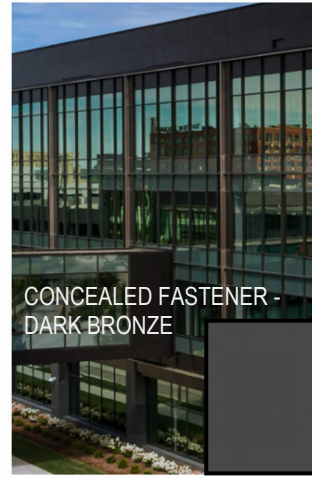
EXTERIOR ELEVATIONS

SHEET NUMBER

A201



METAL PANEL 1

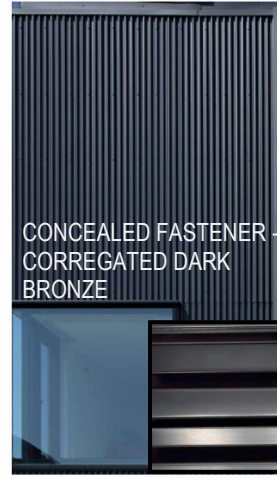


METAL PANEL 2

THREE VARIATIONS OF GRAY



METAL PANEL 3 -



METAL PANEL 4 - corrugated concealed fastener

INSULATING LOW-E VISION GLASS - CLEAR AT FIRST FLOOR



ALUM FRAMING SYSTEM - DARK BRONZE

INSULATING LOW-E VISION GLASS - WITH HIGH PERFORMANCE COATING



ALUM WINDOW WALL - DARK BRONZE



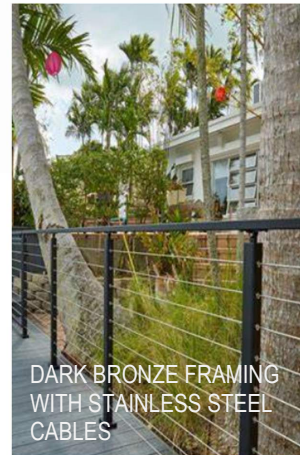
ALUM PATIO DOOR - DARK BRONZE



ARCHITECTURAL LOUVER - DARK BRONZE



GLASS GUARDRAIL ASSEMBLY



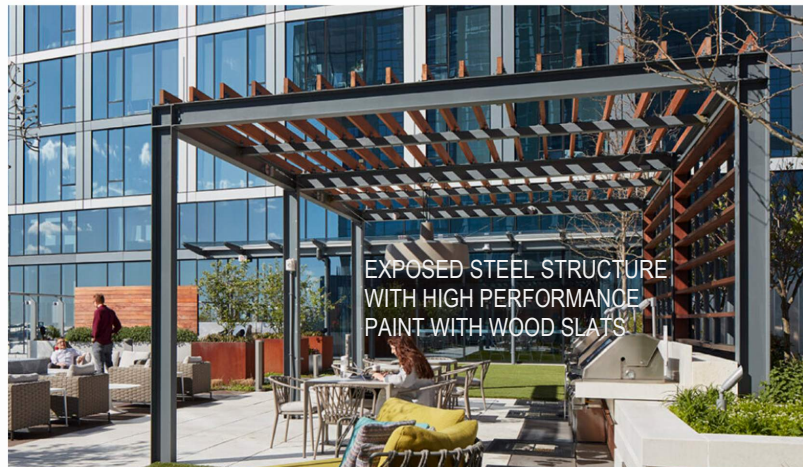
GUARDRAIL ASSEMBLY



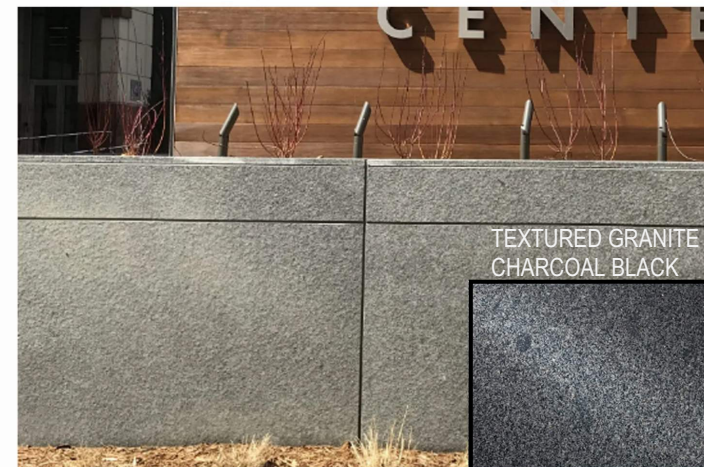
GREEN SCREEN



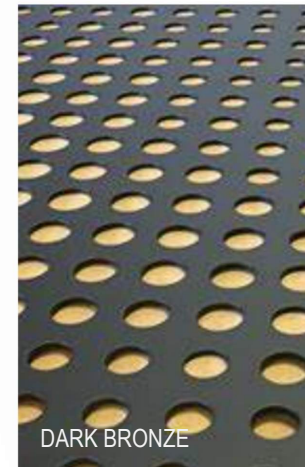
BRICK 1



PERGOLA



STONE 1



PERFORATED METAL PANEL



PUBLIC ART INSTALLATION



JLA PROJECT NUMBER: W22-0106

702 EAST WASHINGTON AVENUE MIXED-USE DEVELOPMENT

DESIGN DEVELOPMENT DOCUMENTS

PROGRESS DOCUMENTS

These documents reflect progress and intent and may be subject to change, including additional details. These are not final construction documents and should not be used for final bidding or construction-related purposes.

DATE OF ISSUANCE JANUARY 5, 2024

REVISION SCHEDULE		
Mark	Description	Date

SHEET TITLE  
DIGITAL MATERIAL BOARD

SHEET NUMBER  
A210



# 702 East Washington - Redevelopment

UDC Presentation  
Shadow Study



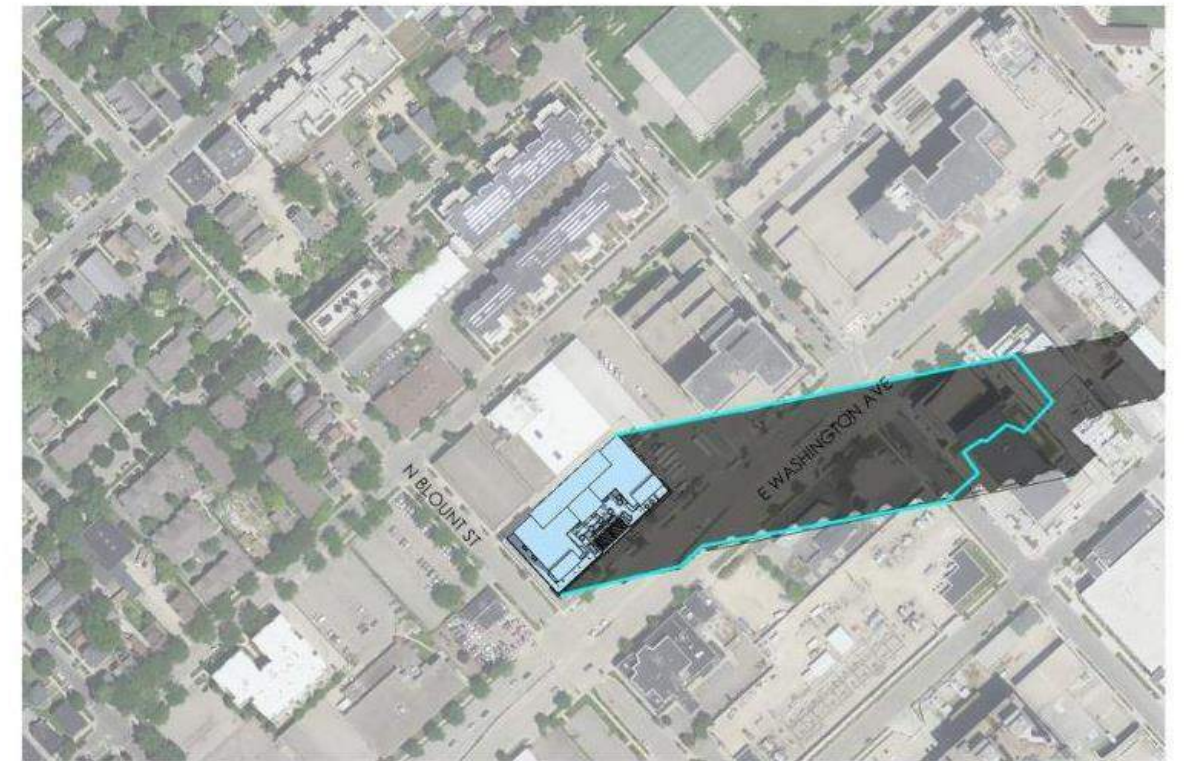
MARCH 14 | 9:00 AM



MARCH 14 | 12:00 PM



MARCH 14 | 3:00 PM



MARCH 14 | 6:00 PM

■ 14-STORY SHADOW  
■ 10-STORY SHADOW

# 702 East Washington - Redevelopment

UDC Presentation  
*Shadow Study*



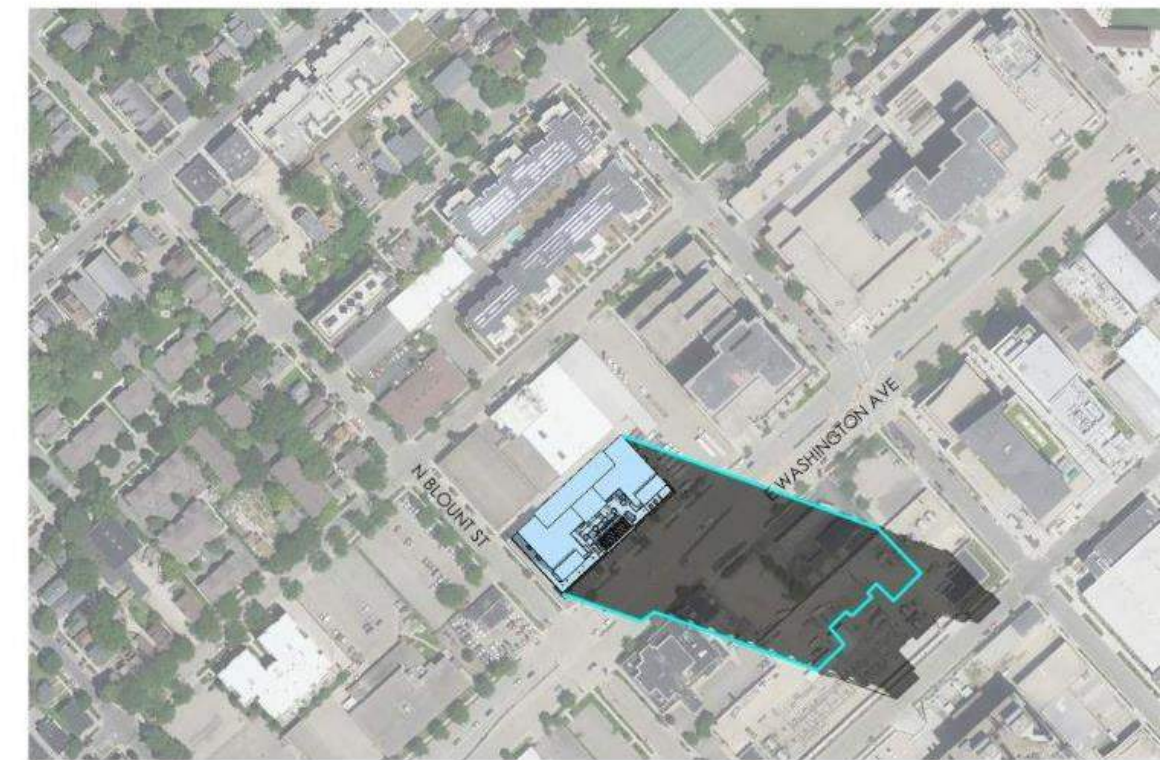
JUNE 14 | 9:00 AM



JUNE 14 | 12:00 PM



JUNE 14 | 3:00 PM



JUNE 14 | 6:00 PM

■ 14-STORY SHADOW  
■ 10-STORY SHADOW

# 702 East Washington - Redevelopment

UDC Presentation  
Shadow Study



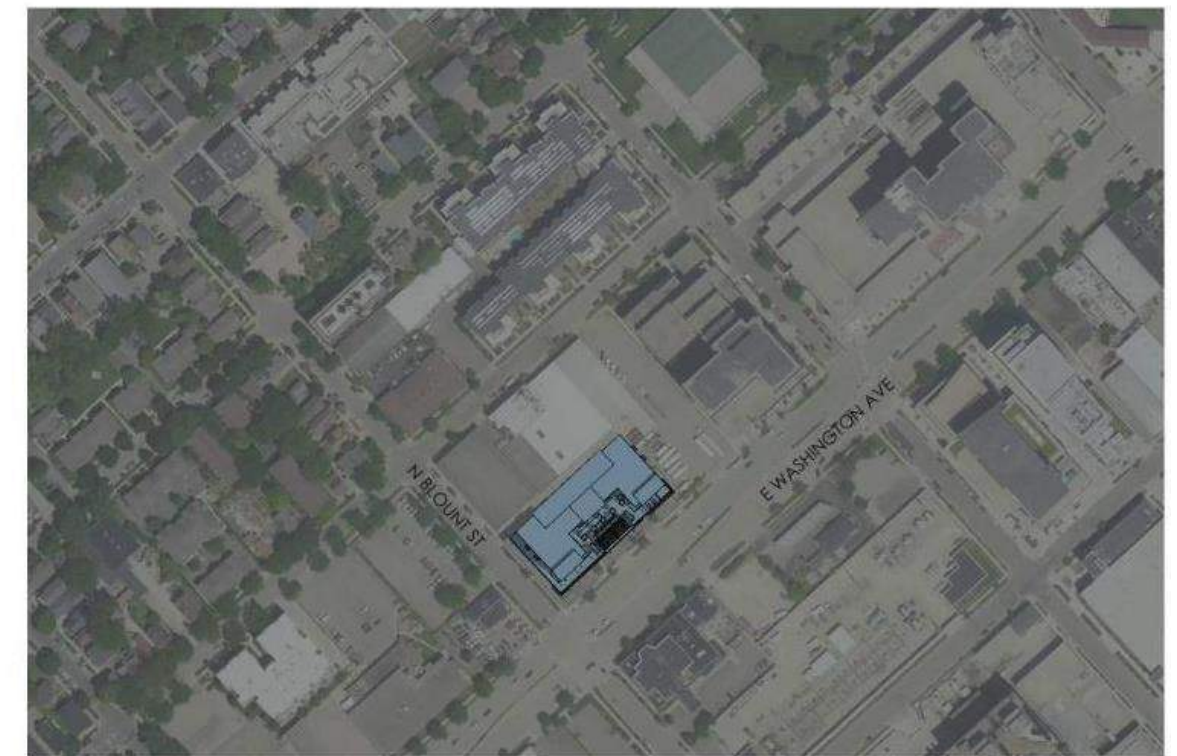
SEPTEMBER 14 | 9:00 AM



SEPTEMBER 14 | 12:00 PM



SEPTEMBER 14 | 3:00 PM



SEPTEMBER 14 | 6:00 PM (POST-SUNSET)

■ 14-STORY SHADOW  
■ 10-STORY SHADOW

# 702 East Washington - Redevelopment

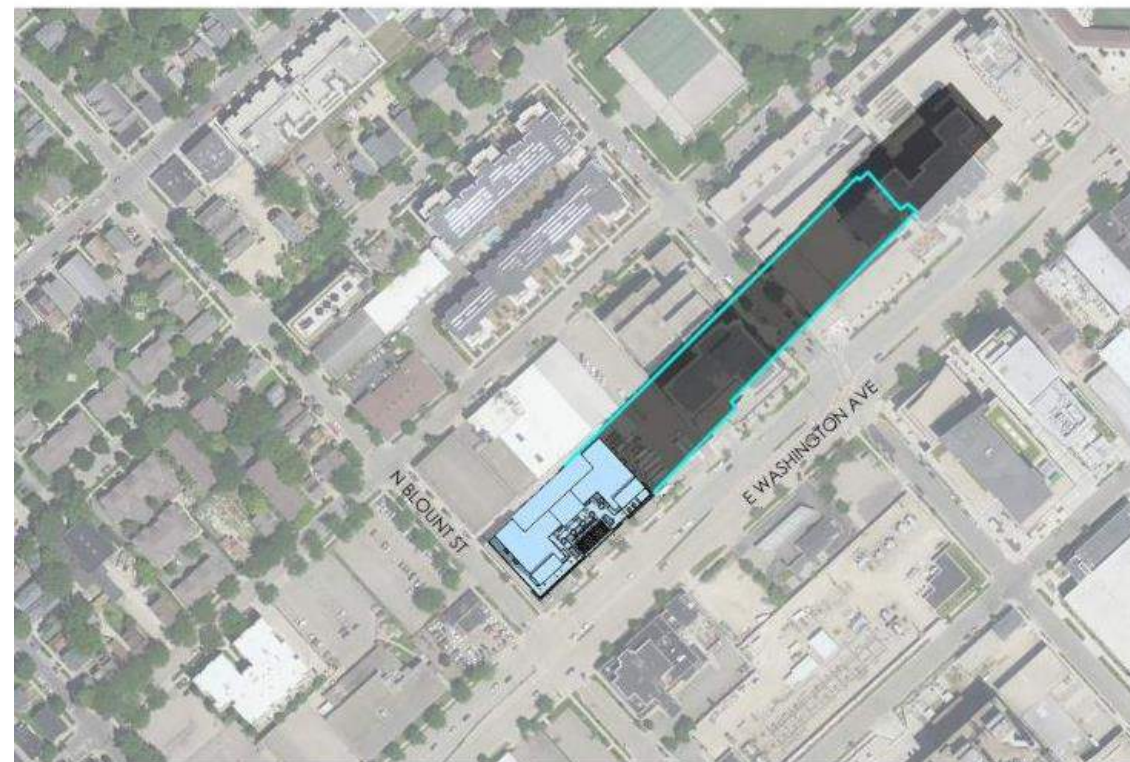
UDC Presentation  
Shadow Study



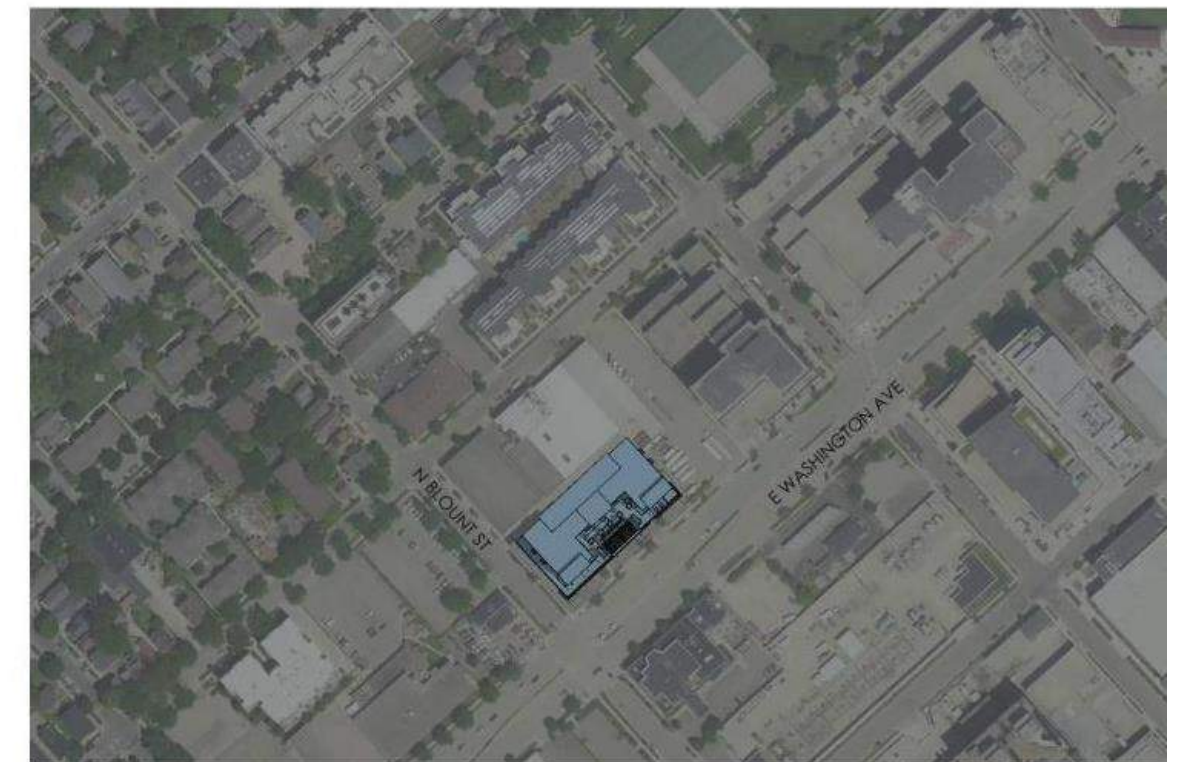
DECEMBER 14 | 9:00 AM



DECEMBER 14 | 12:00 PM



DECEMBER 14 | 3:00 PM



DECEMBER 14 | 6:00 PM (POST-SUNSET)

■ 14-STORY SHADOW  
■ 10-STORY SHADOW