

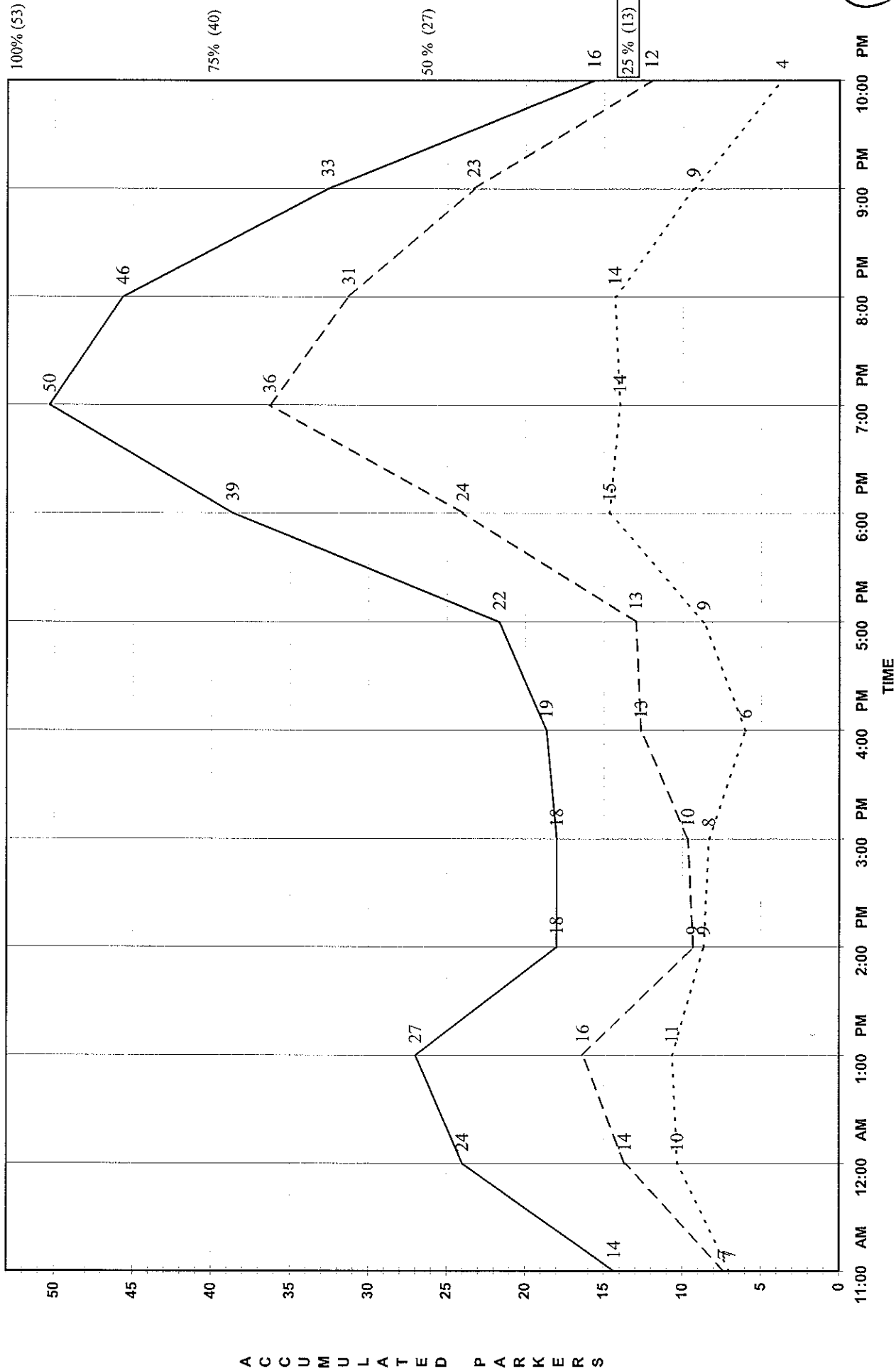
TRANSIT AND PARKING COMMISSION COVER SHEET

AGENDA ITEM: E.2.	MEETING DATE: 1/9/07
ITEM: BUCKEYE LOT STUDY	
OTHER REFERRALS AND ACTIONS TAKEN TO DATE: None	
STAFF DISCUSSION OF ITEM: At the request of the TPC, the Parking Utility has completed an in-depth survey of the Buckeye Lot. This lot has 53 metered spaces and has been discussed as a possible site for a new State Street Parking facility. The survey was performed in October, November and December, and on Tuesday, Wednesday and Thursday from 11AM to 10PM. The special events on survey days included Itzhak Perlman, UW Men's/Women's Basketball and a Christmas Carol. The attached charts indicate the results of the survey and are summarized below: <ul style="list-style-type: none">• Daytime peak occupancy (1PM) was approximately 50% of capacity (27 parkers)• At this same time on these dates, nearby ramps had the following occupancy levels:<ul style="list-style-type: none">• Overture 51%• SS Campus 17%• SS Capitol 31%• There were approximately 650+ vacant parking spaces available at Buckeye and the three ramps above during peak daytime weekday hours.• On a typical weekday at peak, only the portion of the Buckeye Lot closest to Gorham Street was utilized.• Buckeye Lot utilization peaked at about 7PM on weekdays (94%).• At this same hour, approximately 1230+ spaces were available at Overture, SS Campus and SS Capitol.• 247 parkers used the Buckeye Lot on a daily basis, 70% of them for one hour or less.• The longer-term parkers were more likely to use the facility at night.• 20% of the time vehicles were parked, the meters were expired. Most of the expired meters were at night.• No citations were issued the first survey day, while 7 citations were issued to the 111 expired meters on the next two survey days. 45% of the meters generated revenue for the Parking Utility on the survey dates.	
FISCAL IMPLICATIONS: None	
MATERIALS PRESENTED WITH ITEM: Buckeye Lot Accumulated Parkers by time of day (Attachment A) Historical parking occupancy information for Overture (Attachment B), State St Campus (Attachment C) and State St Capitol (Attachment D) ramps	
STAFF RECOMMENDATION/RATIONALE: Parking is adequate now in the downtown area except during very large events such as Taste of Madison and the Art Fair. The recent rate increase has redistributed demand to less expensive ramps such as Overture. The very recent implementation of the Parking Ramp Shuttle will redistribute this demand even further. Future rate increases planned to generate funds for the rebuilding of Government East ramp will also redistribute this demand to lesser-used facilities. While the building of additional parking supply in the downtown area cannot be justified on current demand/supply conditions, there may be latent parking demand that exists when potential downtown visitors avoid the downtown area because of their perception of parking problems. The Ramp Shuttle can act as a test of this latent demand. At its conclusion in June, the Parking Utility staff will make further recommendations.	
PREPARED BY: Bill Knobeloch, Parking Operations Manager	DATE: January 3, 2007

Buckeye Lot Accumulated Parkers by Time of Day

Composite -- Oct 24 (Tue), Nov 15 (Wed) & Dec 7 (Thur), 2006

- BUCKEYE LOT-LOT58 -2 HR (38)
- .-.- BUCKEYE LOT-LOT58 -3 HR (15)
- ___ BUCKEYE LOT-LOT58 -TOTAL (53)



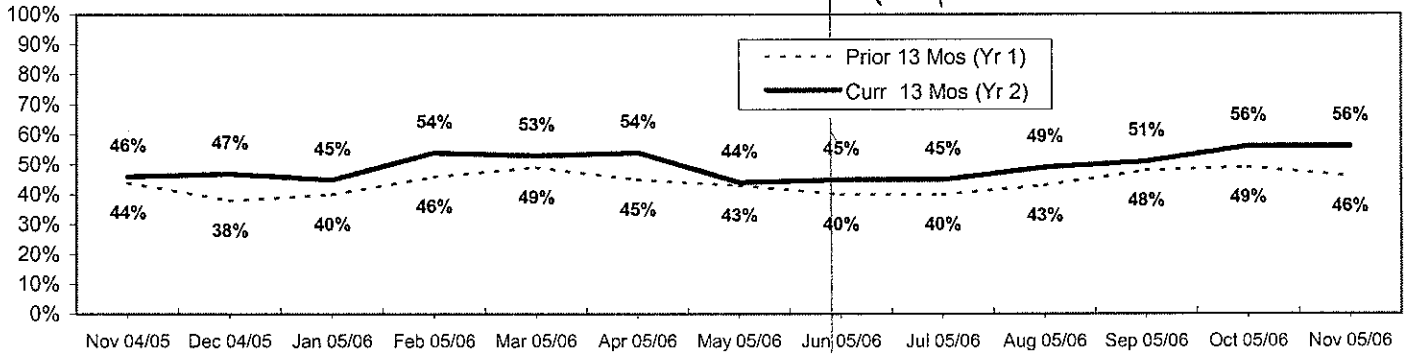
A

AVERAGE WEEKDAY OCCUPANCY (for the Last Two Years)

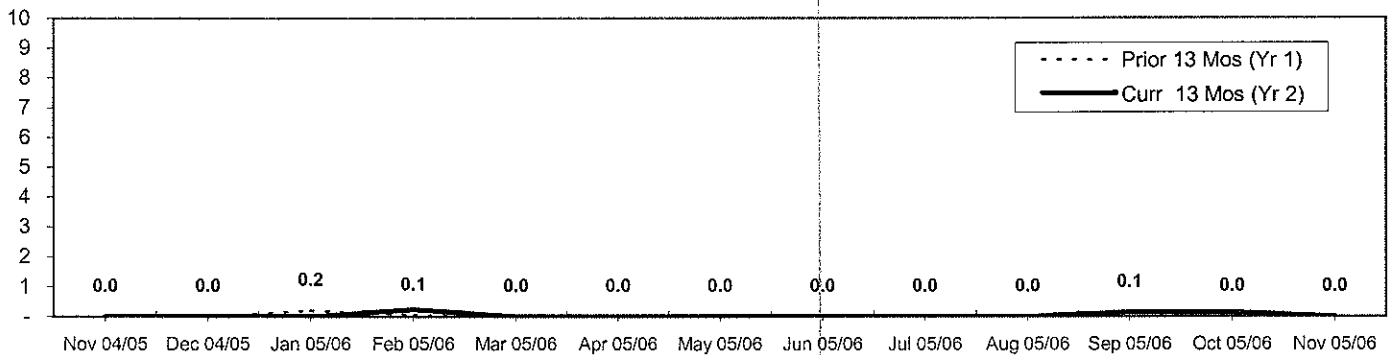
for Parcs Data: represents the Monthly Averages for 10 am - 2 pm only

Sources: October 2003 forward = Parcs System

NO Rate lower here (70%+)

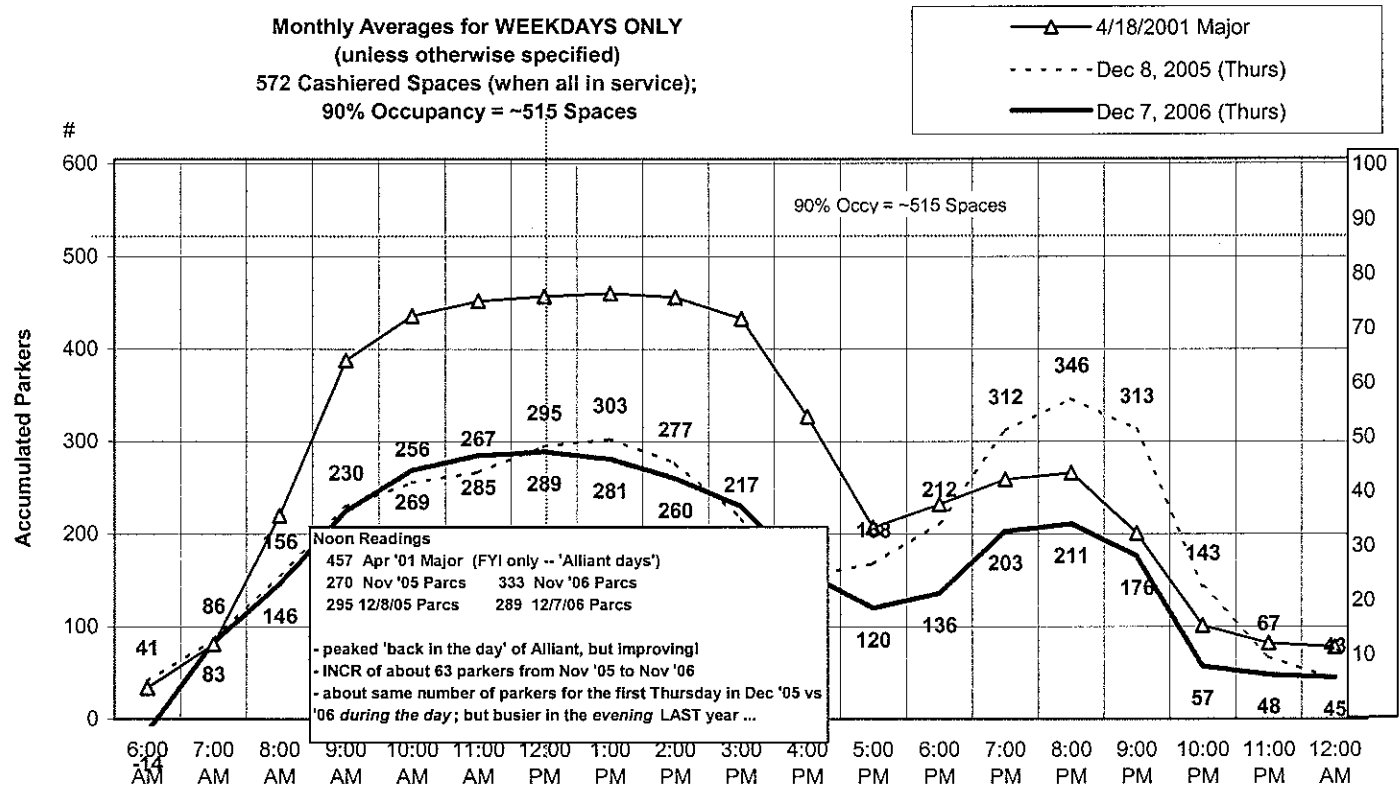


AVERAGE # OF WEEKDAY HOURS AT 90%+ OCCUPANCY FOR THE LAST TWO YEARS



ACCUMULATED PARKERS BY TIME OF DAY

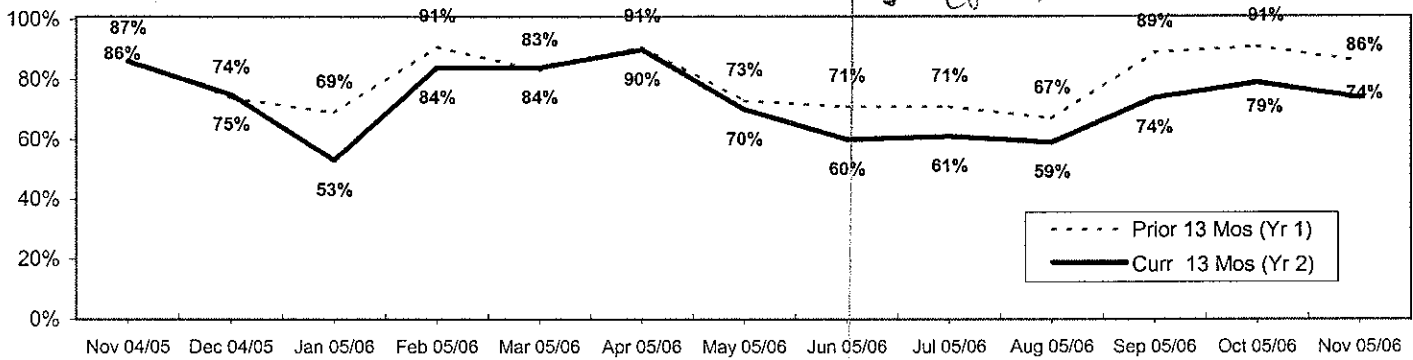
Monthly Averages for WEEKDAYS ONLY
 (unless otherwise specified)
 572 Cashiered Spaces (when all in service);
 90% Occupancy = ~515 Spaces



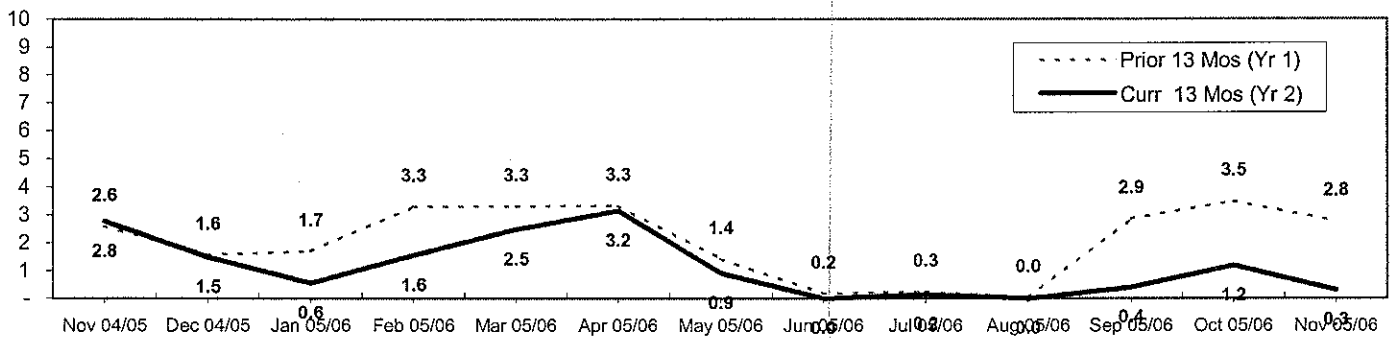
AVERAGE WEEKDAY OCCUPANCY (for the Last Two Years)

for Parcs Data: represents the Monthly Averages for 10 am - 2 pm only

Sources: January 2004 forward = Parcs System



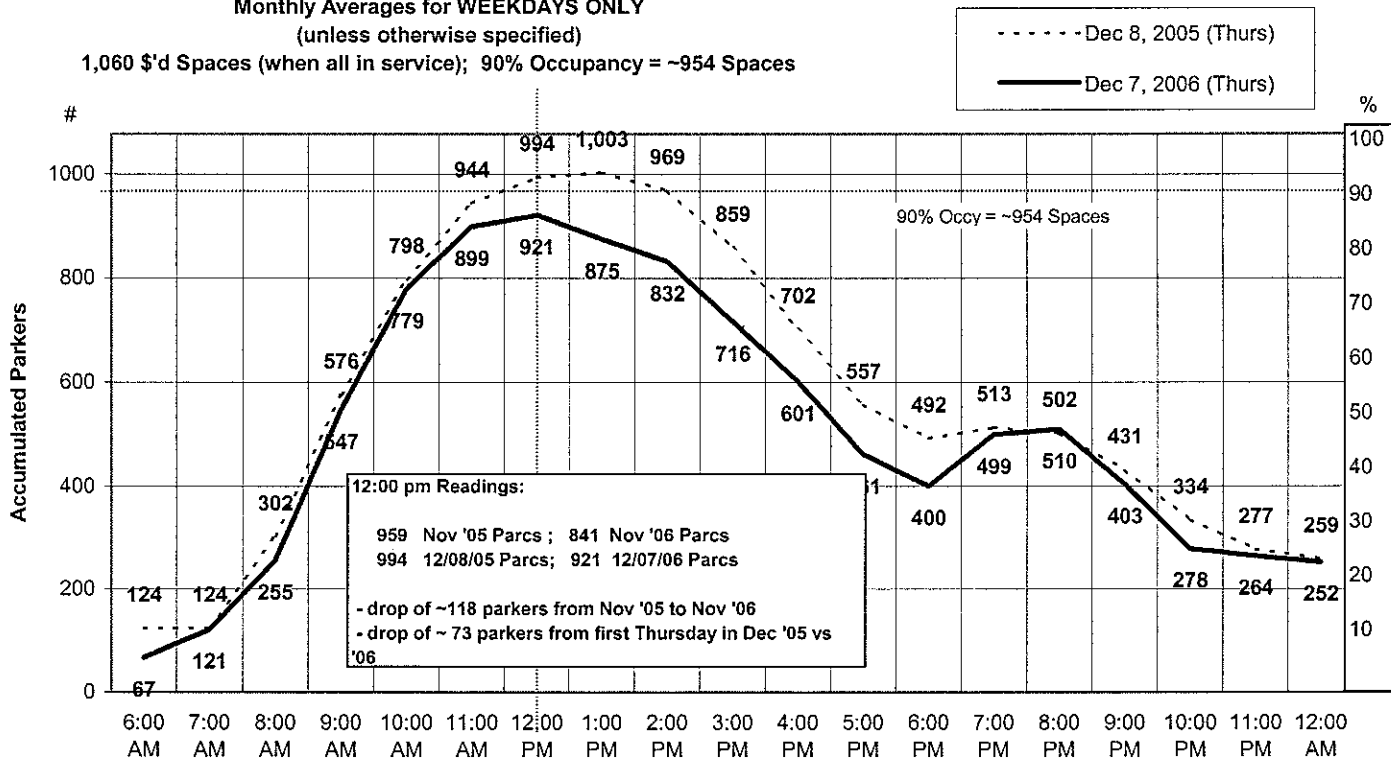
AVERAGE # OF WEEKDAY HOURS AT 90%+ OCCUPANCY FOR THE LAST TWO YEARS



ACCUMULATED PARKERS BY TIME OF DAY

Monthly Averages for WEEKDAYS ONLY
(unless otherwise specified)

1,060 \$'d Spaces (when all in service); 90% Occupancy = ~954 Spaces



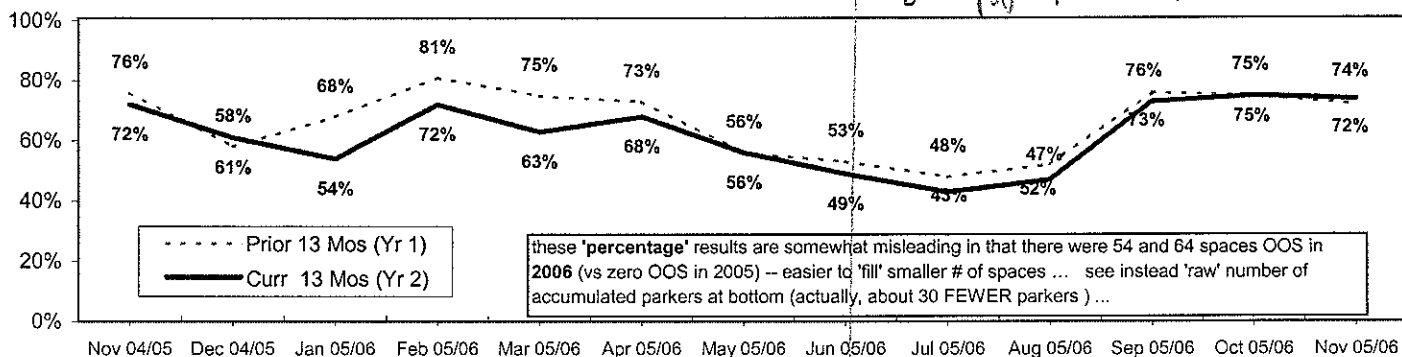


AVERAGE WEEKDAY OCCUPANCY (for the Last Two Years)

for Parcs Data: represents the Monthly Averages for 10 am - 2 pm only

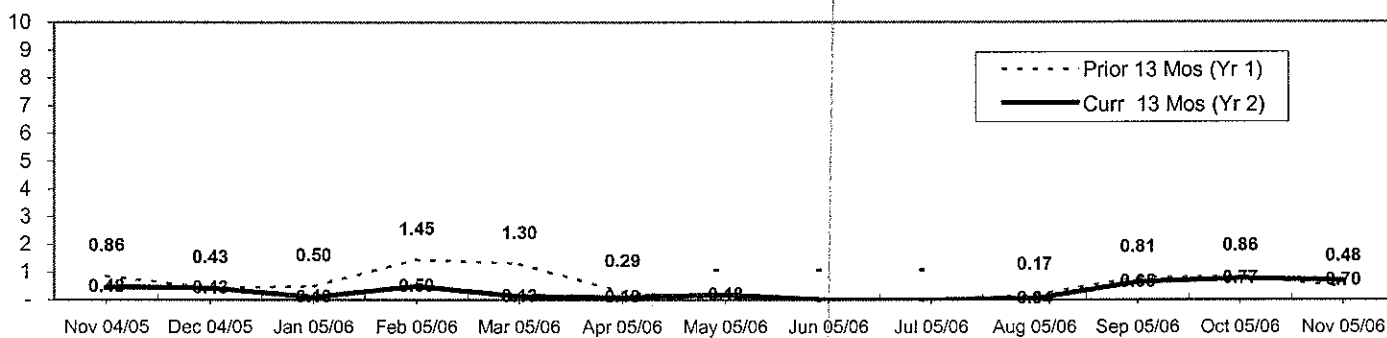
Sources: April 2003 forward = Parcs System

Rate Increase (from 70¢ to 85¢ per hour)



these 'percentage' results are somewhat misleading in that there were 54 and 64 spaces OOS in 2006 (vs zero OOS in 2005) - easier to 'fill' smaller # of spaces ... see instead 'raw' number of accumulated parkers at bottom (actually, about 30 FEWER parkers) ...

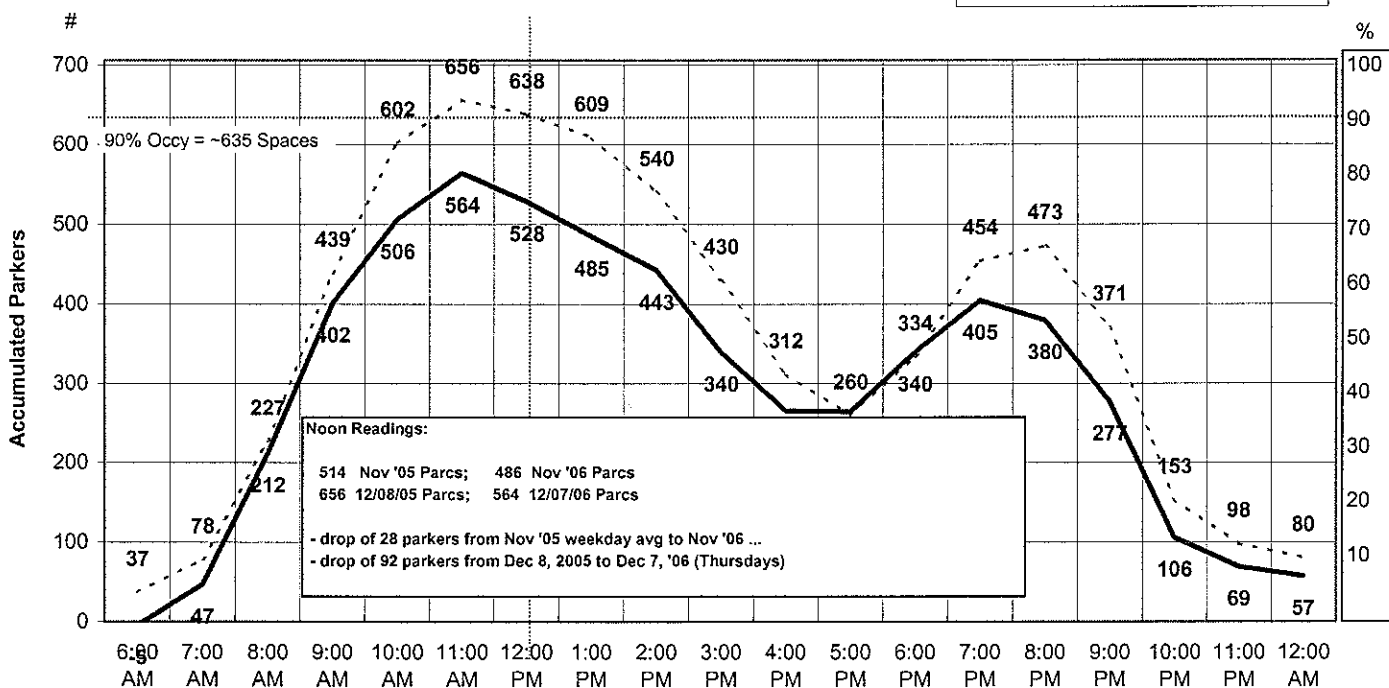
AVERAGE # OF WEEKDAY HOURS AT 90%+ OCCUPANCY FOR THE LAST TWO YEARS



ACCUMULATED PARKERS BY TIME OF DAY

Monthly Averages for WEEKDAYS ONLY (unless otherwise specified)

706 \$'d Spaces (when all in service); 90% Occupancy = ~635 Spaces



Noon Readings:
 514 Nov '05 Parcs; 486 Nov '06 Parcs
 656 12/08/05 Parcs; 564 12/07/06 Parcs
 - drop of 28 parkers from Nov '05 weekday avg to Nov '06 ...
 - drop of 92 parkers from Dec 8, 2005 to Dec 7, '06 (Thursdays)