

SITE LOCATOR MAP

LOT 3 OF UNIVERSITY PARK
603 S. WHITNEY WAY, MADISON

UDC FINAL PRESENTATION | 07.17.2024 | 2248



SOUTH WHITNEY WAY

BUILDING #6
167 UNIT - MARKET RATE
W/ UNDERGROUND PARKING STALLS
4 STORY

TOKAY BOULEVARD

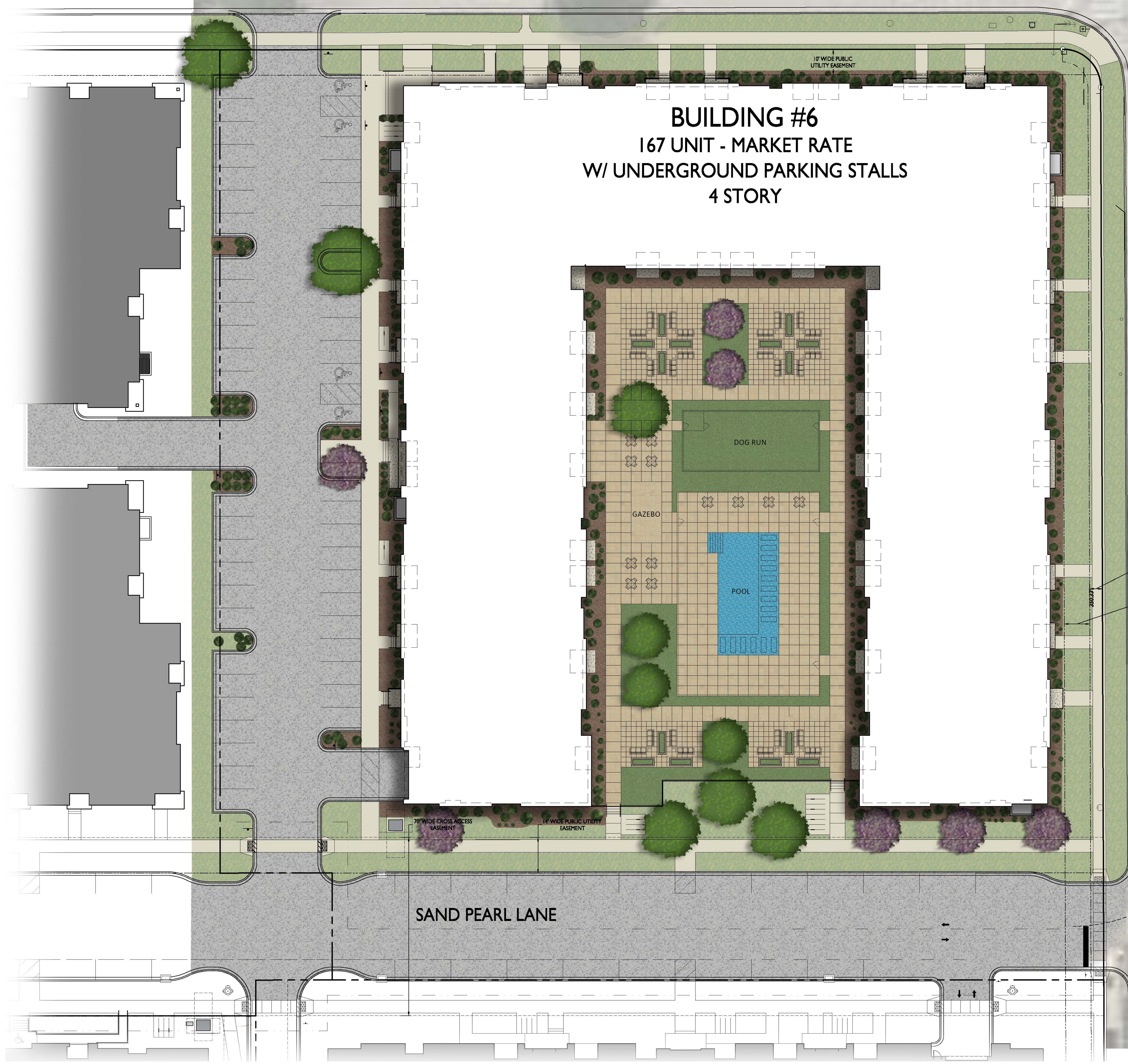
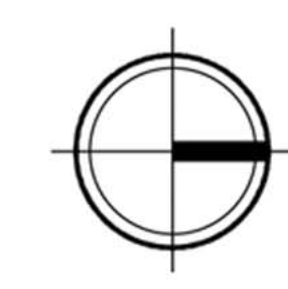
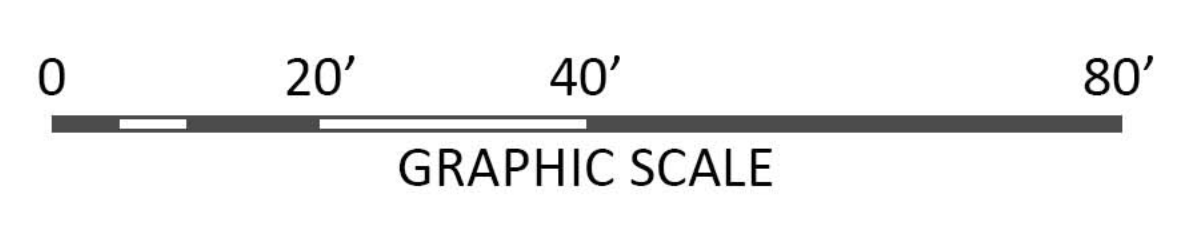
SAND PEARL LANE

BLVD

SITE PLAN

LOT 3 OF UNIVERSITY PARK
603 S. WHITNEY WAY, MADISON

UDC PRESENTATION | 07.17.2024 | 2248



10' WIDE PUBLIC UTILITY EASEMENT
5' WIDE PUBLIC SIDEWALK AND BIKE PATH EASEMENT
10' WIDE PUBLIC UTILITY EASEMENT

GAS

70' WIDE CROSS ACCESS EASEMENT
14' WIDE PUBLIC UTILITY EASEMENT

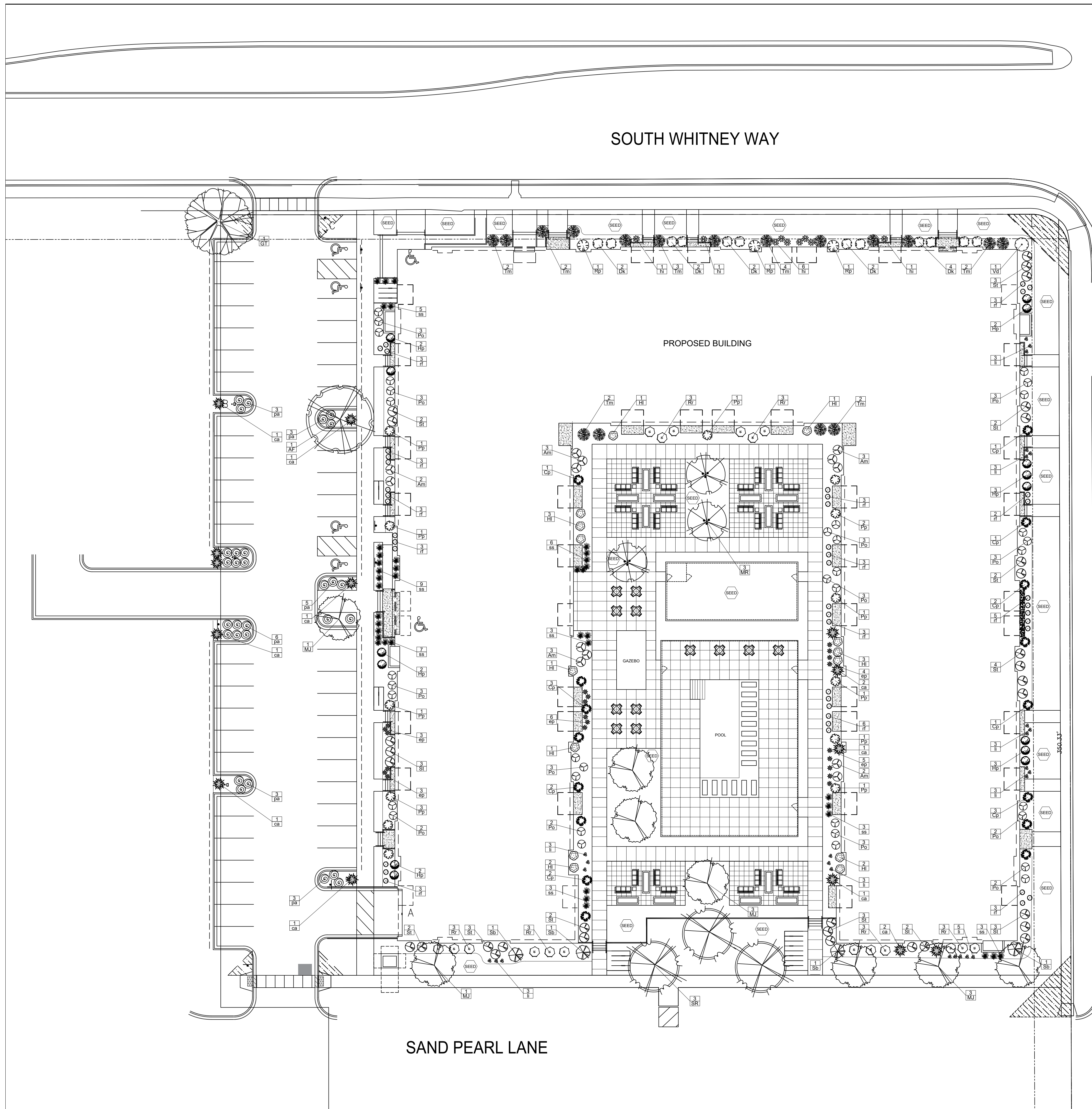
Date: 2024.04.08
Scale: 1"=20'-0"
Designer: KS / BF
Job #

Seal:
To protect against legal liability,
the plans presented herein are
"schematic," and should not be
outsourced as "biddable" or
"construction documents" unless
approved by the Landscape
Designer. This is not an original
document unless stamped in
red, as ORIGINAL.

Revisions:
2024.05.23
2024.05.28

L-1.0
**LANDSCAPE
PLAN**

Reference Name:
JT Klein Company, Inc.



PLANT LIST

KEY	SCIENTIFIC NAME	COMMON NAME	QTY	SIZE	ROOT	STEM
DECIDUOUS TREES						
AF	<i>Acer x freemansi 'Jelersred'</i>	Autumn Blaze Maple	1	2"	B&B	
GT	<i>Gleditsia tricanthos 'Draves'</i>	Streetkeeper Honeylocust	1	2"	B&B	
ORNAMENTAL TREES						
MJ	<i>Malus 'Jewelcole'</i>	Red Jewel Crabapple	8	2"	B&B	
MR	<i>Malus 'JFS-KWS'</i>	Royal Raindrops Crabapple	3	2"	B&B	
SR	<i>Syringa reticulata 'Ivory Silk'</i>	Ivory Silk Japanese Tree Lilac	3	6"	B&B	
EVERGREEN SHRUBS						
Cp	<i>Chamaecyparis ptilifera 'Golden Map'</i>	Golden Map Jap False Cypress	16	#3	Cont.	
Pp	<i>Picea pungens 'Globoosa'</i>	Dwarf Globe Blue Spruce	13	#5	Cont.	
Rp	<i>Rhododendron 'PJM'</i>	PJM Rhododendron	3	#5	Cont.	
Tm	<i>Taxus x media 'Tauntoni'</i>	Taunton Yew	18	#5	Cont.	
DECIDUOUS SHRUBS						
Am	<i>Aronia melanocarpa 'Morton'</i>	Iroquois Beauty Chokeberry	13	#3	Cont.	
Dk	<i>Diervilla 'G2X85411'</i>	Kodiak Red Bush Honeysuckle	12	#3	Cont.	
Hp	<i>Hydrangea paniculata 'SMHPLQF'</i>	Little Quick Fire Hydrangea	14	#3	Cont.	
Hl	<i>Hydrangea paniculata 'Jane'</i>	Little Lime Hydrangea	14	#3	Cont.	
Po	<i>Physocarpus opulifolius 'SMPO7W'</i>	Tiny Wine Ninebark	35	#5	Cont.	
Rr	<i>Rosa 'Silvini'</i>	Easy Elegance Kashmir Rose	15	#3	Cont.	
St	<i>Spiraea betulifolia 'Tor Gold'</i>	Glow Girl Spirea	30	#3	Cont.	
Sb	<i>Syringa 'SMS-BP7'</i>	Dark Purple Blooming Lilac	4	#3	Cont.	
Vd	<i>Viburnum dentatum 'Christom'</i>	Blue Muffin Arrowwood Viburnum	1	#5	Cont.	
ORNAMENTAL GRASSES & PERENNIALS						
ca	<i>Calamagrostis x acutiflora 'Karl Foerster'</i>	Karl Foerster Feather Reed Grass	8	#1	Cont.	
Hl	<i>Hosta 'Liberty'</i>	Liberty Hosta	9	#1	Cont.	
ep	<i>Echinacea 'Pixie Meadowrite'</i>	Pixie Meadowrite Coneflower	21	#1	Cont.	
ll	<i>Lavandula angustifolia 'Balkanviki'</i>	Superblue Lavender	26	#1	Cont.	
pa	<i>Parosela aristocytis 'Little Spire'</i>	Little Spire Russian Sage	23	#1	Cont.	
ss	<i>Sporobolus heterolepis</i>	Prairie Dropseed Grass	42	#1	Cont.	
rf	<i>Rudbeckia fulgida 'Vitte's Little Suzy'</i>	Little Suzy Black Eyed Susan	43	#1	Cont.	

LANDSCAPE NOTES:

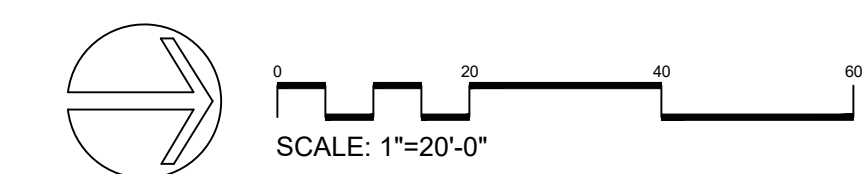
- Please refer to Grading & Erosion Control Plan for final contour information.
- Individual tree and shrub groupings in lawn areas to receive brown dyed wood mulch rings with shovel cut edge.
- Vinyl edge is Dimex EdgePro polyvinyl edging or equivalent.

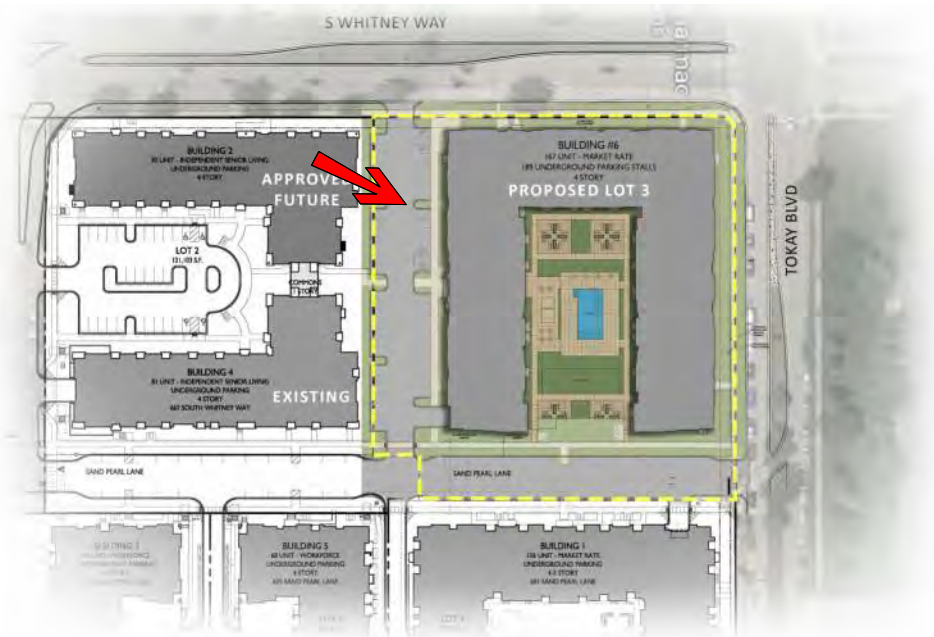
STREET TREE NOTES:

All existing street trees on Whitney Way will be removed for underground utility construction.

New street tree locations and tree species within the right-of-way have been determined in conjunction with City Forestry. Contractor shall contact City Forestry, Wayne Buckley wbuckley@cityofmadison.com or 266-4892 for approval of final planting locations and tree species.

At least one week prior to street tree planting, Contractor shall contact City Forestry at (608) 266-4816 to schedule inspection and approval of nursery stock and review planting specifications with the landscaper.



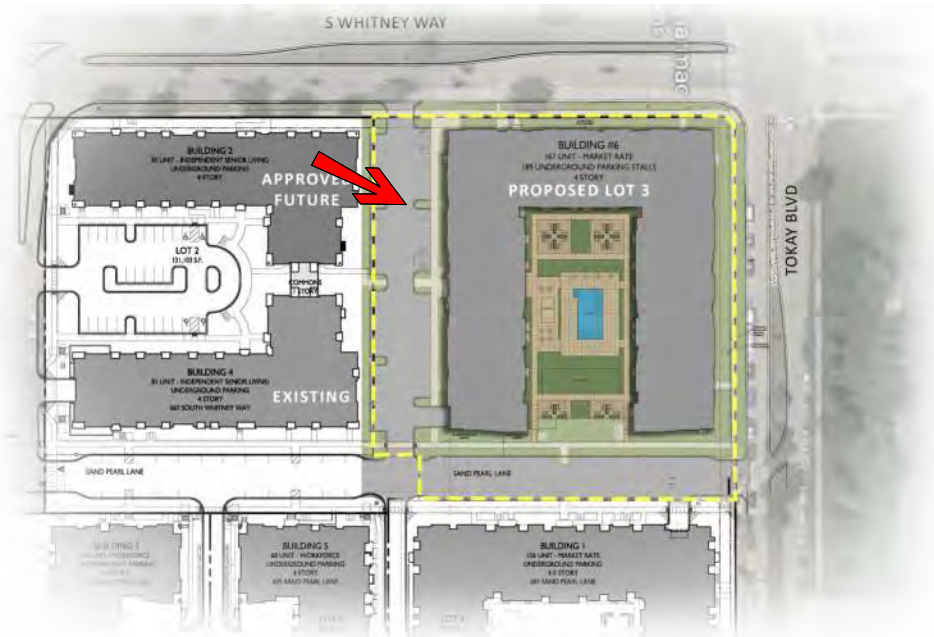


Previous
Concept Render

Lot 3 of University Park
603 S. Whitney Way, Madison, WI

UDC INFORMATION | 04.08.2024 | 2248

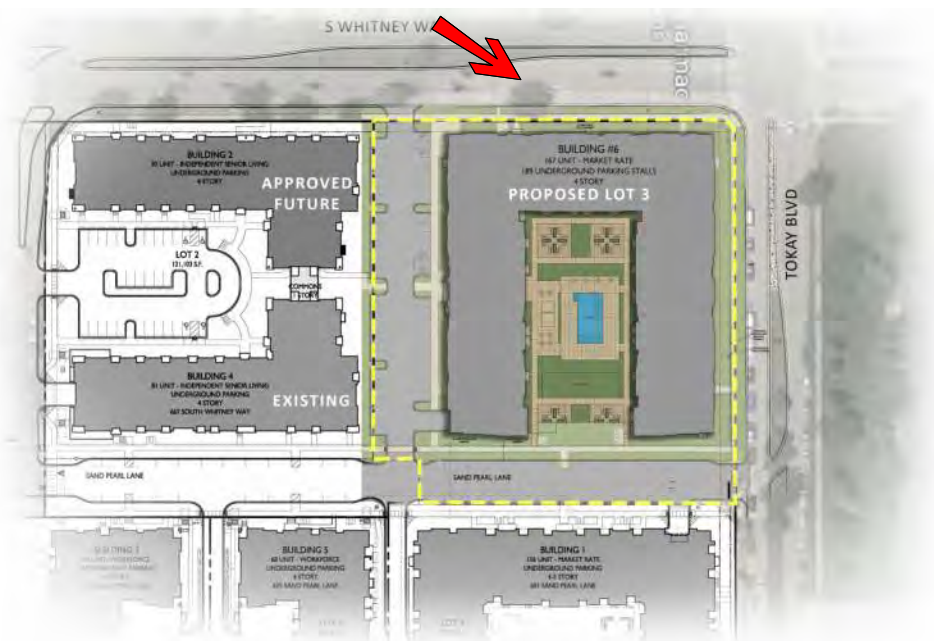




Concept Render

Lot 3 of University Park
603 S. Whitney Way, Madison, WI
UDC FINAL SUBMITTAL | 05.28.2024 | 2248

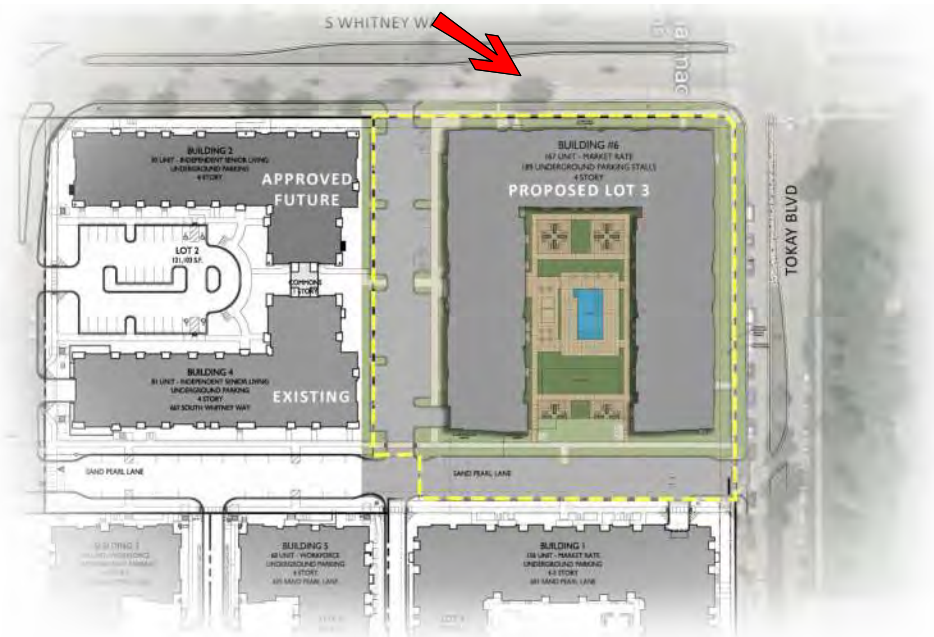




Previous
Concept Render

Lot 3 of University Park
603 S. Whitney Way, Madison, WI
UDC INFORMATION | 04.08.2024 | 2248

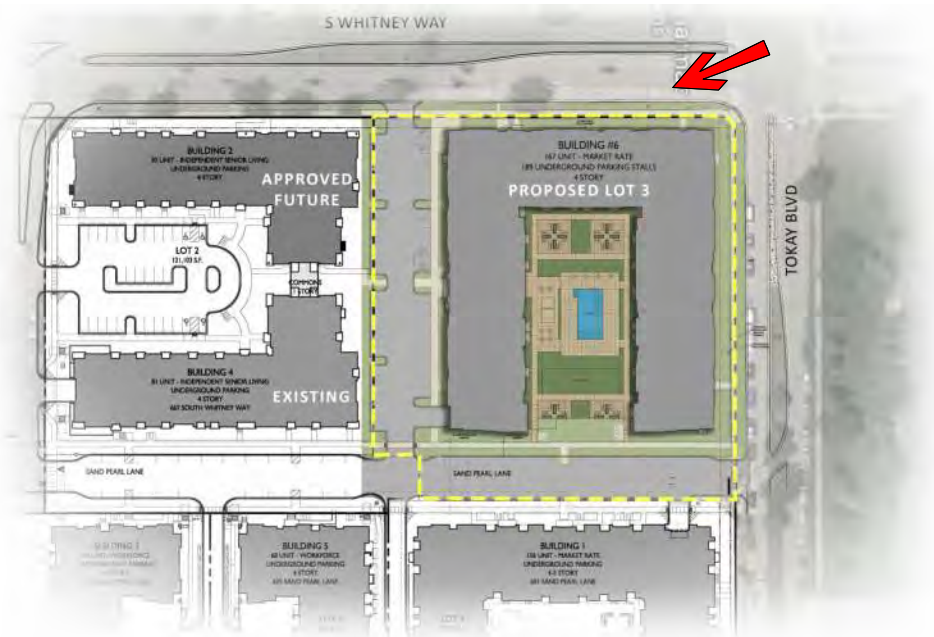




Concept Render

Lot 3 of University Park
603 S. Whitney Way, Madison, WI
UDC FINAL SUBMITTAL | 05.28.2024 | 2248





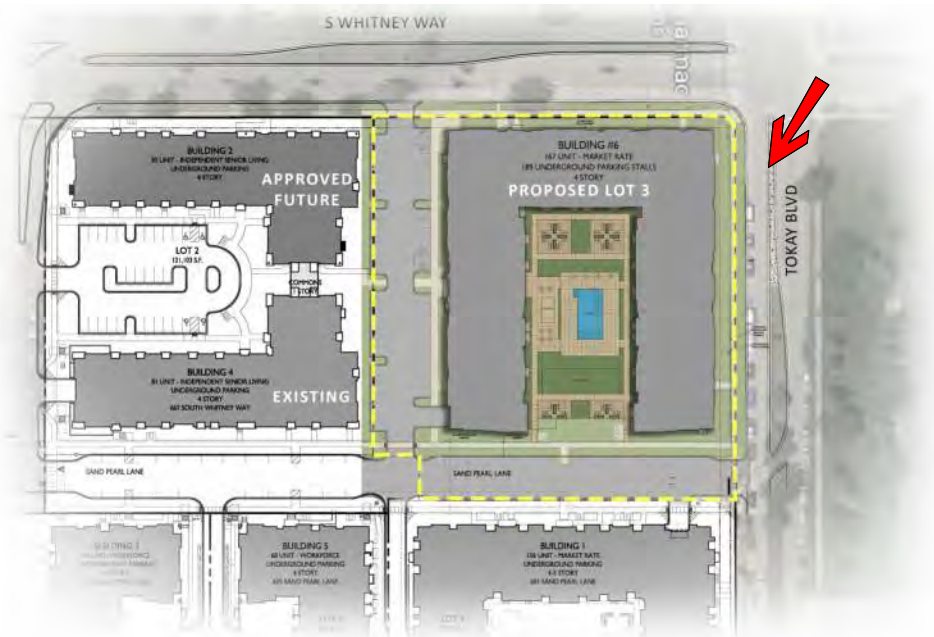
Concept Render

Lot 3 of University Park
603 S. Whitney Way, Madison, WI
UDC FINAL SUBMITTAL | 05.28.2024 | 2248





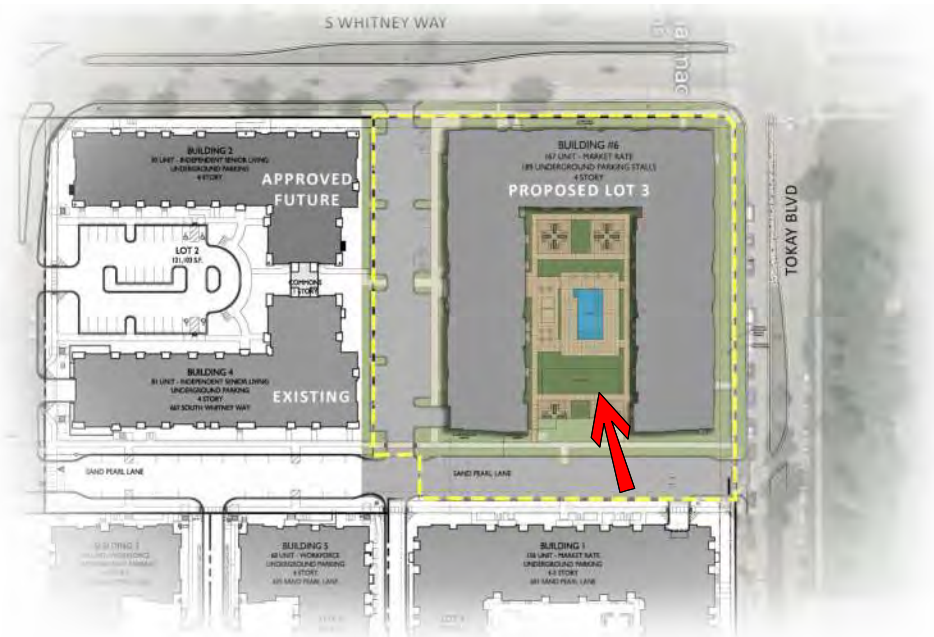
SIGNAGE



Concept Render

Lot 3 of University Park
603 S. Whitney Way, Madison, WI
UDC FINAL SUBMITTAL | 05.28.2024 | 2248





Concept Render

Lot 3 of University Park
603 S. Whitney Way, Madison, WI
UDC FINAL SUBMITTAL | 05.28.2024 | 2248





RAILINGS &
WINDOWS

EXTERIOR MATERIAL SCHEDULE			
MARK	BUILDING ELEMENT	MANUFACTURER	COLOR
01	COMPOSITE LAP SIDING 6"	JAMES HARDIE	IRON GRAY
02	COMPOSITE LAP SIDING 6"	JAMES HARDIE - WOODTONE	SUMMER WHEAT
03	COMPOSITE PANELS	JAMES HARDIE	ARCTIC WHITE
04	COMPOSITE LAP SIDING 4"	JAMES HARDIE	GRAY SLATE
05	BRICK VENEER	SUMMIT	ST. CHARLES
06	CAST STONE BANDS & SILLS	ROCKCAST	CREME BUFF
07	COMPOSITE TRIM	JAMES HARDIE	VARIES
08	ALUMINUM RAILING & HANDRAILS	SUPERIOR	BLACK
09	ALUMINUM STOREFRONT	TBD	BLACK
10	COMPOSITE WINDOWS	ANDERSEN 100	BLACK

Material Board

A-9.0





WEST ELEVATION



SOUTH ELEVATION

EXTERIOR MATERIAL SCHEDULE			
MARK	BUILDING ELEMENT	MANUFACTURER	COLOR
01	COMPOSITE LAP SIDING 6"	JAMES HARDIE	IRON GRAY
02	COMPOSITE LAP SIDING 6"	JAMES HARDIE - WOODTONE	SUMMER WHEAT
03	COMPOSITE PANELS	JAMES HARDIE	ARCTIC WHITE
04	COMPOSITE LAP SIDING 4"	JAMES HARDIE	GRAY SLATE
05	BRICK VENEER	SUMMIT	ST. CHARLES
06	CAST STONE BANDS & SILLS	ROCKCAST	CREME BUFF
07	COMPOSITE TRIM	JAMES HARDIE	VARIES
08	ALUMINUM RAILING & HANDRAILS	SUPERIOR	BLACK
09	ALUMINUM STOREFRONT	TBD	BLACK
10	COMPOSITE WINDOWS	ANDERSEN 100	BLACK



NORTH ELEVATION



EAST ELEVATION

EXTERIOR MATERIAL SCHEDULE			
MARK	BUILDING ELEMENT	MANUFACTURER	COLOR
01	COMPOSITE LAP SIDING 6"	JAMES HARDIE	IRON GRAY
02	COMPOSITE LAP SIDING 6"	JAMES HARDIE - WOODTONE	SUMMER WHEAT
03	COMPOSITE PANELS	JAMES HARDIE	ARCTIC WHITE
04	COMPOSITE LAP SIDING 4"	JAMES HARDIE	GRAY SLATE
05	BRICK VENEER	SUMMIT	ST. CHARLES
06	CAST STONE BANDS & SILLS	ROCKCAST	CREME BUFF
07	COMPOSITE TRIM	JAMES HARDIE	VARIES
08	ALUMINUM RAILING & HANDRAILS	SUPERIOR	BLACK
09	ALUMINUM STOREFRONT	TBD	BLACK
10	COMPOSITE WINDOWS	ANDERSEN 100	BLACK



INTERIOR ELEVATION



INTERIOR ELEVATION

EXTERIOR MATERIAL SCHEDULE			
MARK	BUILDING ELEMENT	MANUFACTURER	COLOR
01	COMPOSITE LAP SIDING 6"	JAMES HARDIE	IRON GRAY
02	COMPOSITE LAP SIDING 6"	JAMES HARDIE - WOODTONE	SUMMER WHEAT
03	COMPOSITE PANELS	JAMES HARDIE	ARCTIC WHITE
04	COMPOSITE LAP SIDING 4"	JAMES HARDIE	GRAY SLATE
05	BRICK VENEER	SUMMIT	ST. CHARLES
06	CAST STONE BANDS & SILLS	ROCKCAST	CREME BUFF
07	COMPOSITE TRIM	JAMES HARDIE	VARIES
08	ALUMINUM RAILING & HANDRAILS	SUPERIOR	BLACK
09	ALUMINUM STOREFRONT	TBD	BLACK
10	COMPOSITE WINDOWS	ANDERSEN 100	BLACK