

EAST HILL ADDITION TO BELMAR

LOCATED IN THE NE 1/4 OF SECTION 5, T6N, R9E
DADE COUNTY, WILSONVILLE
ANTHONY TROUSARD, REGISTERED SURVEYOR

N91310

161.45 Pgs

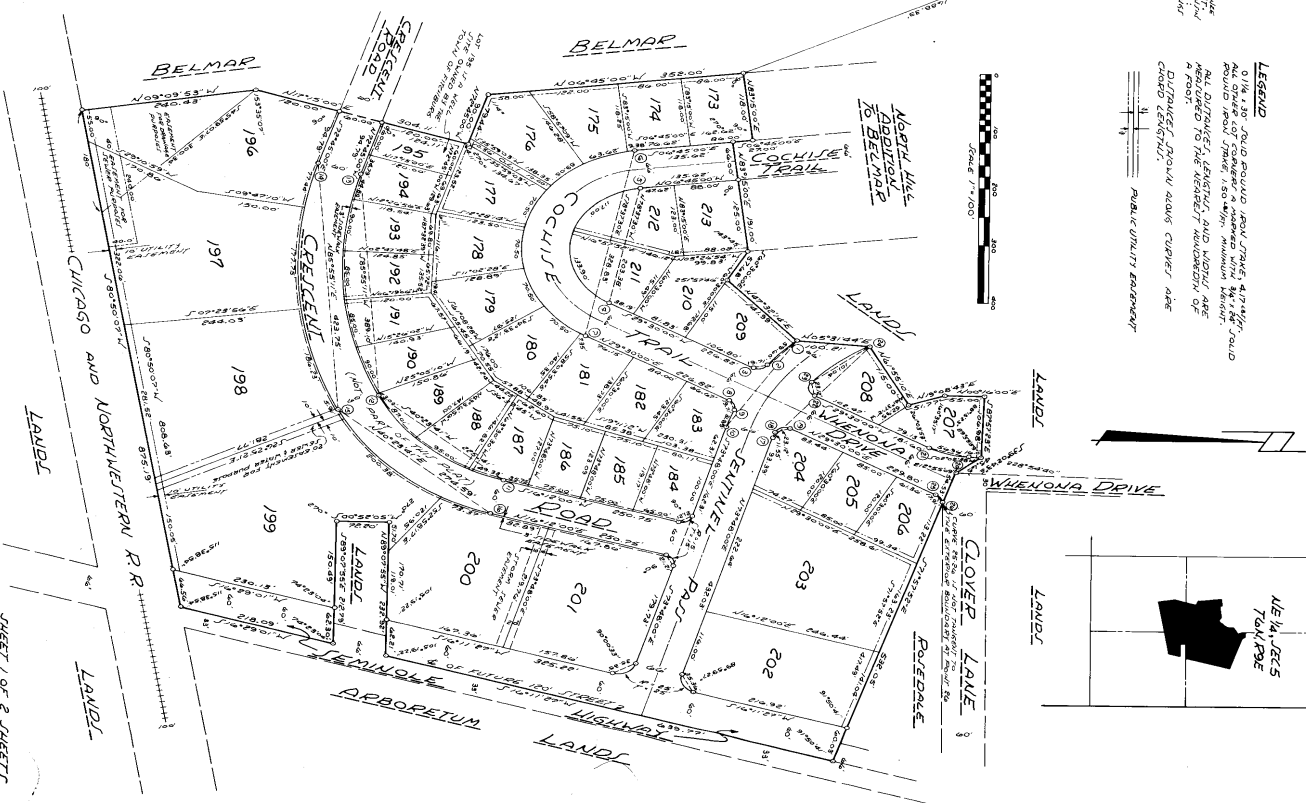
CONTR. LIST	ACRES	CHST. ANGLE	CHORD	BEARING	TRN. BEARING
1-2	386.00	101°13'38"	831.46	S89°51'30"E	S285°07'40"E
2-3	15.00	86°09'24"	13.71	S11°04'18"E	S435°09'24"E
4-5	1484.00	203.38	1484.00	N89°51'30"E	N435°09'24"E
213	107.00	64°17'08"	117.00	N68°53'34"E	S60°04'40"E
214	107.00	64°17'08"	117.00	N68°53'34"E	S60°04'40"E
174	173.00	148°42'00"	328.83	S79°57'30"E	S80°04'40"E
175	173.00	148°42'00"	328.83	S79°57'30"E	S80°04'40"E
176	173.00	148°42'00"	328.83	S79°57'30"E	S80°04'40"E
177	173.00	148°42'00"	328.83	S79°57'30"E	S80°04'40"E
178	173.00	148°42'00"	328.83	S79°57'30"E	S80°04'40"E
179	173.00	148°42'00"	328.83	S79°57'30"E	S80°04'40"E
180	173.00	148°42'00"	328.83	S79°57'30"E	S80°04'40"E
181	173.00	148°42'00"	328.83	S79°57'30"E	S80°04'40"E
182	173.00	148°42'00"	328.83	S79°57'30"E	S80°04'40"E
183	173.00	148°42'00"	328.83	S79°57'30"E	S80°04'40"E
184	173.00	148°42'00"	328.83	S79°57'30"E	S80°04'40"E
185	173.00	148°42'00"	328.83	S79°57'30"E	S80°04'40"E
186	173.00	148°42'00"	328.83	S79°57'30"E	S80°04'40"E
187	173.00	148°42'00"	328.83	S79°57'30"E	S80°04'40"E
188	173.00	148°42'00"	328.83	S79°57'30"E	S80°04'40"E
189	173.00	148°42'00"	328.83	S79°57'30"E	S80°04'40"E
190	173.00	148°42'00"	328.83	S79°57'30"E	S80°04'40"E
191	173.00	148°42'00"	328.83	S79°57'30"E	S80°04'40"E
192	173.00	148°42'00"	328.83	S79°57'30"E	S80°04'40"E
193	173.00	148°42'00"	328.83	S79°57'30"E	S80°04'40"E
194	173.00	148°42'00"	328.83	S79°57'30"E	S80°04'40"E
195	173.00	148°42'00"	328.83	S79°57'30"E	S80°04'40"E
196	173.00	148°42'00"	328.83	S79°57'30"E	S80°04'40"E
197	173.00	148°42'00"	328.83	S79°57'30"E	S80°04'40"E
198	173.00	148°42'00"	328.83	S79°57'30"E	S80°04'40"E
199	173.00	148°42'00"	328.83	S79°57'30"E	S80°04'40"E
200	173.00	148°42'00"	328.83	S79°57'30"E	S80°04'40"E
201	173.00	148°42'00"	328.83	S79°57'30"E	S80°04'40"E
202	173.00	148°42'00"	328.83	S79°57'30"E	S80°04'40"E
203	173.00	148°42'00"	328.83	S79°57'30"E	S80°04'40"E
204	173.00	148°42'00"	328.83	S79°57'30"E	S80°04'40"E
205	173.00	148°42'00"	328.83	S79°57'30"E	S80°04'40"E
206	173.00	148°42'00"	328.83	S79°57'30"E	S80°04'40"E
207	173.00	148°42'00"	328.83	S79°57'30"E	S80°04'40"E
208	173.00	148°42'00"	328.83	S79°57'30"E	S80°04'40"E
209	173.00	148°42'00"	328.83	S79°57'30"E	S80°04'40"E
210	173.00	148°42'00"	328.83	S79°57'30"E	S80°04'40"E
211	173.00	148°42'00"	328.83	S79°57'30"E	S80°04'40"E
212	173.00	148°42'00"	328.83	S79°57'30"E	S80°04'40"E
213	173.00	148°42'00"	328.83	S79°57'30"E	S80°04'40"E
214	173.00	148°42'00"	328.83	S79°57'30"E	S80°04'40"E
215	173.00	148°42'00"	328.83	S79°57'30"E	S80°04'40"E
216	173.00	148°42'00"	328.83	S79°57'30"E	S80°04'40"E
217	173.00	148°42'00"	328.83	S79°57'30"E	S80°04'40"E
218	173.00	148°42'00"	328.83	S79°57'30"E	S80°04'40"E
219	173.00	148°42'00"	328.83	S79°57'30"E	S80°04'40"E
220	173.00	148°42'00"	328.83	S79°57'30"E	S80°04'40"E
221	173.00	148°42'00"	328.83	S79°57'30"E	S80°04'40"E
222	173.00	148°42'00"	328.83	S79°57'30"E	S80°04'40"E
223	173.00	148°42'00"	328.83	S79°57'30"E	S80°04'40"E
224	173.00	148°42'00"	328.83	S79°57'30"E	S80°04'40"E
225	173.00	148°42'00"	328.83	S79°57'30"E	S80°04'40"E
226	173.00	148°42'00"	328.83	S79°57'30"E	S80°04'40"E
227	173.00	148°42'00"	328.83	S79°57'30"E	S80°04'40"E
228	173.00	148°42'00"	328.83	S79°57'30"E	S80°04'40"E
229	173.00	148°42'00"	328.83	S79°57'30"E	S80°04'40"E
230	173.00	148°42'00"	328.83	S79°57'30"E	S80°04'40"E
231	173.00	148°42'00"	328.83	S79°57'30"E	S80°04'40"E
232	173.00	148°42'00"	328.83	S79°57'30"E	S80°04'40"E
233	173.00	148°42'00"	328.83	S79°57'30"E	S80°04'40"E
234	173.00	148°42'00"	328.83	S79°57'30"E	S80°04'40"E
235	173.00	148°42'00"	328.83	S79°57'30"E	S80°04'40"E
236	173.00	148°42'00"	328.83	S79°57'30"E	S80°04'40"E
237	173.00	148°42'00"	328.83	S79°57'30"E	S80°04'40"E
238	173.00	148°42'00"	328.83	S79°57'30"E	S80°04'40"E
239	173.00	148°42'00"	328.83	S79°57'30"E	S80°04'40"E
240	173.00	148°42'00"	328.83	S79°57'30"E	S80°04'40"E

INVESTOR	ACRES	CHST. ANGLE	CHORD	BEARING	TRN. BEARING
1	386.00	101°13'38"	831.46	S89°51'30"E	S285°07'40"E
2	15.00	86°09'24"	13.71	S11°04'18"E	S435°09'24"E
3	1484.00	203.38	1484.00	N89°51'30"E	N435°09'24"E
4	107.00	64°17'08"	117.00	N68°53'34"E	S60°04'40"E
5	107.00	64°17'08"	117.00	N68°53'34"E	S60°04'40"E
6	173.00	148°42'00"	328.83	S79°57'30"E	S80°04'40"E
7	173.00	148°42'00"	328.83	S79°57'30"E	S80°04'40"E
8	173.00	148°42'00"	328.83	S79°57'30"E	S80°04'40"E
9	173.00	148°42'00"	328.83	S79°57'30"E	S80°04'40"E
10	173.00	148°42'00"	328.83	S79°57'30"E	S80°04'40"E
11	173.00	148°42'00"	328.83	S79°57'30"E	S80°04'40"E
12	173.00	148°42'00"	328.83	S79°57'30"E	S80°04'40"E
13	173.00	148°42'00"	328.83	S79°57'30"E	S80°04'40"E
14	173.00	148°42'00"	328.83	S79°57'30"E	S80°04'40"E
15	173.00	148°42'00"	328.83	S79°57'30"E	S80°04'40"E
16	173.00	148°42'00"	328.83	S79°57'30"E	S80°04'40"E
17	173.00	148°42'00"	328.83	S79°57'30"E	S80°04'40"E
18	173.00	148°42'00"	328.83	S79°57'30"E	S80°04'40"E
19	173.00	148°42'00"	328.83	S79°57'30"E	S80°04'40"E
20	173.00	148°42'00"	328.83	S79°57'30"E	S80°04'40"E
21	173.00	148°42'00"	328.83	S79°57'30"E	S80°04'40"E
22	173.00	148°42'00"	328.83	S79°57'30"E	S80°04'40"E
23	173.00	148°42'00"	328.83	S79°57'30"E	S80°04'40"E
24	173.00	148°42'00"	328.83	S79°57'30"E	S80°04'40"E

IN THE PRESENCE OF
 W. J. O'FARRELL
 WITNESSES
 W. J. O'FARRELL
 WITNESSES
 W. J. O'FARRELL
 WITNESSES

IN WITNESS WHEREOF, THE SAID COMMISSIONER AND SURVEYOR HAVE AFFIXED THEIR RESPECTIVE SIGNS AND SEAL TO THE FIELD-BOOK AND CERTIFICATION OF THIS SURVEY AND HEREBY CERTIFY TO THE FIDELITY AND INTEGRITY OF THE FOREGOING SURVEY.

RECORDED IN THE PUBLIC RECORDS OF DADE COUNTY, FLORIDA, IN BOOK 13, PAGE 117.



DADE COUNTY, FLORIDA
 REGISTERED SURVEYOR
 W. J. O'FARRELL
 1972

