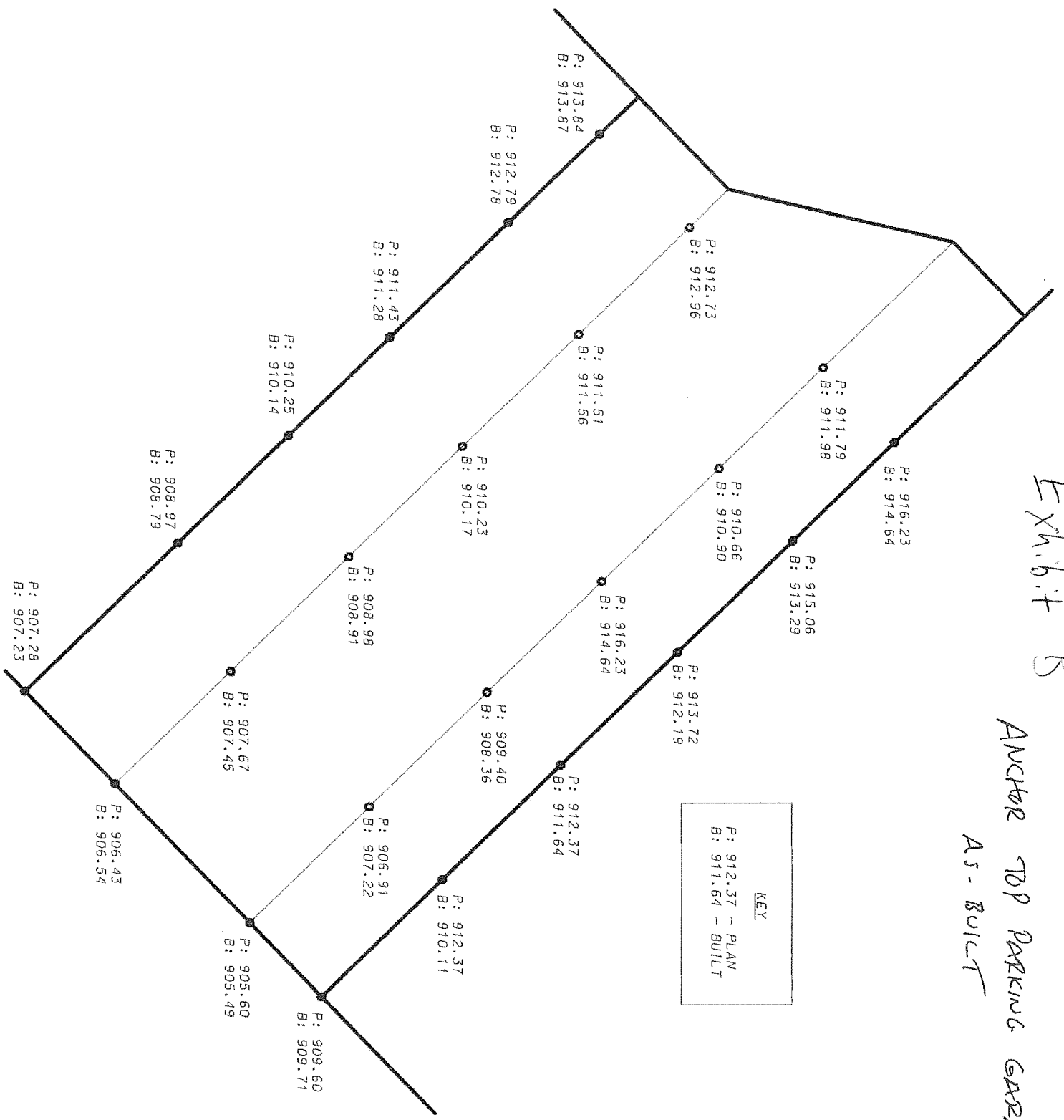


Exhibit B

ANCHOR TOP PARKING GARAGE L10  
AS-BUILT



KEY  
P: 912.37 - PLAN  
B: 911.64 - BUILT

P: 913.84  
B: 913.87

P: 912.79  
B: 912.78

P: 911.43  
B: 911.28

P: 910.25  
B: 910.14

P: 908.97  
B: 908.79

P: 907.28  
B: 907.23

P: 906.43  
B: 906.54

P: 907.67  
B: 907.45

P: 906.91  
B: 907.22

P: 905.60  
B: 905.49

P: 909.60  
B: 909.71

P: 910.23  
B: 910.17

P: 908.98  
B: 908.91

P: 909.40  
B: 908.36

P: 912.37  
B: 910.11

P: 912.37  
B: 911.64

P: 916.23  
B: 914.64

P: 913.72  
B: 912.19

P: 912.73  
B: 912.96

P: 911.51  
B: 911.56

P: 910.66  
B: 910.90

P: 915.06  
B: 913.29

P: 911.79  
B: 911.98

P: 916.23  
B: 914.64