

Know what's below.  
Call before you dig.

R.A.SMITH, INC. ASSUMES NO RESPONSIBILITY FOR DAMAGES, LIABILITY OR COSTS RESULTING FROM CHANGES OR ALTERATIONS MADE TO THIS PLAN WITHOUT THE EXPRESSED WRITTEN CONSENT OF R.A.SMITH, INC.

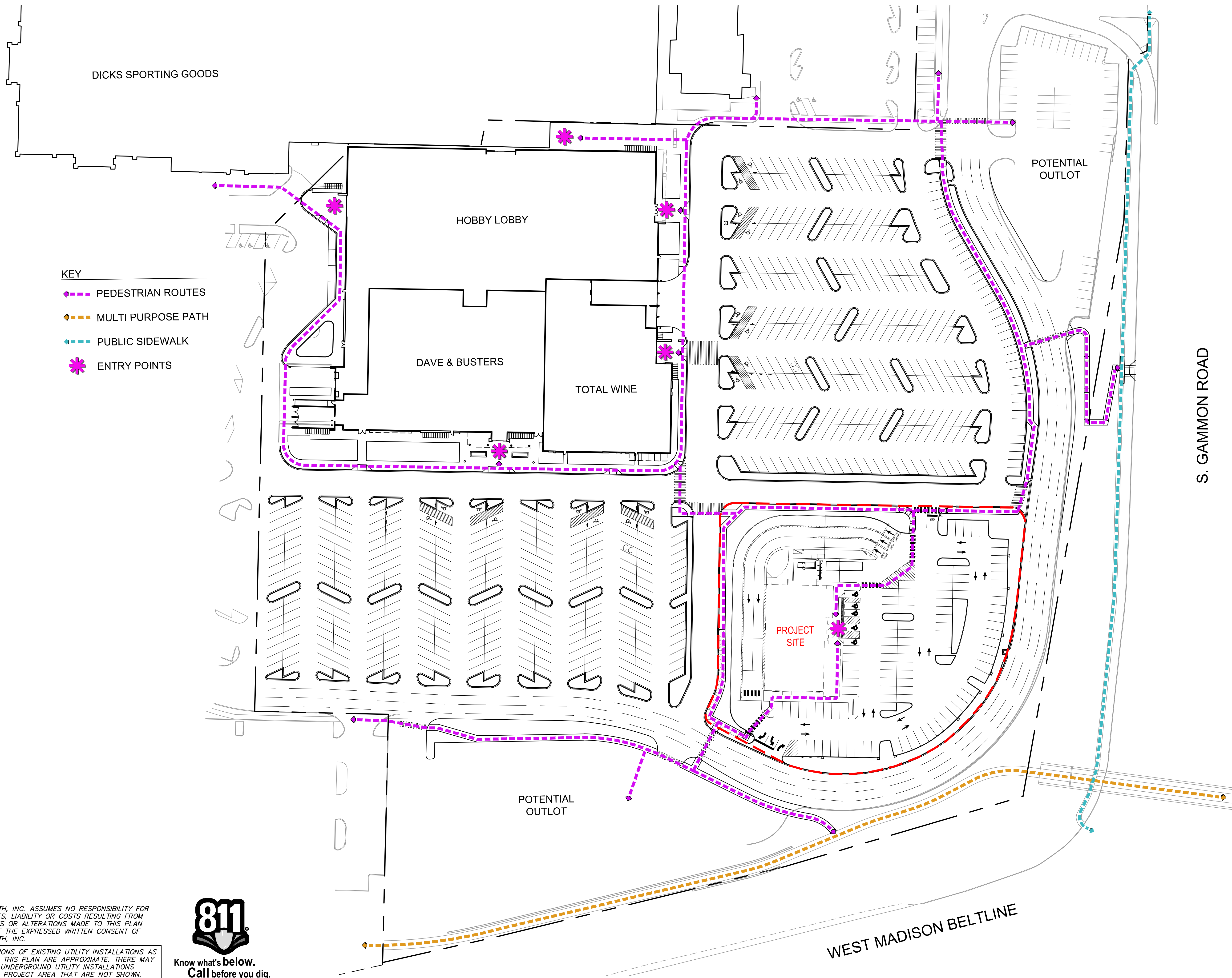
THE LOCATIONS OF EXISTING UTILITY INSTALLATIONS AS SHOWN ON THIS PLAN ARE APPROXIMATE. THERE MAY BE OTHER UNDERGROUND UTILITY INSTALLATIONS WITHIN THE PROJECT AREA THAT ARE NOT SHOWN.

DESCRIPTION	
DATE	
16745 W. Bluemound Road Brookfield, WI 53005-5938 (262) 781-1000 rasmith.com	
<b>raSmith</b> CREATIVITY BEYOND ENGINEERING	
Brookfield, WI   Milwaukee, WI   Appleton, WI   Madison, WI   Cedarburg, WI Mount Pleasant, WI   Napperville, IL   Irvine, CA	
<b>WEST TOWNE MALL REDEVELOPMENT</b> <b>CITY OF MADISON, WI</b>	
<b>OVERALL SITE PLAN</b>	
© COPYRIGHT 2020 R.A. Smith, Inc. DATE: 11/20/2020 SCALE: 1" = 150' JOB NO. 3200225 PROJECT MANAGER: <b>MATT P. KOCOUREK, PE</b> DESIGNED BY: JLM CHECKED BY: RJY	
<b>SHEET NUMBER</b> SP-1	









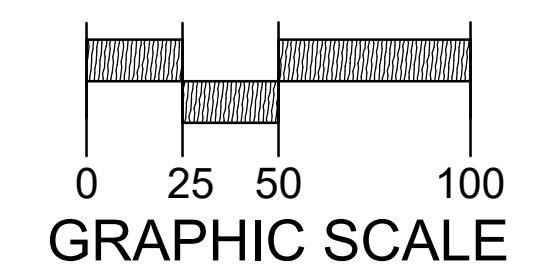
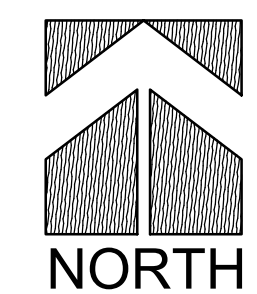
- KEY**
- PEDESTRIAN ROUTES
  - MULTI PURPOSE PATH
  - PUBLIC SIDEWALK
  - ENTRY POINTS

R.A.SMITH, INC. ASSUMES NO RESPONSIBILITY FOR DAMAGES, LIABILITY OR COSTS RESULTING FROM CHANGES OR ALTERATIONS MADE TO THIS PLAN WITHOUT THE EXPRESSED WRITTEN CONSENT OF R.A.SMITH, INC.

THE LOCATIONS OF EXISTING UTILITY INSTALLATIONS AS SHOWN ON THIS PLAN ARE APPROXIMATE. THERE MAY BE OTHER UNDERGROUND UTILITY INSTALLATIONS WITHIN THE PROJECT AREA THAT ARE NOT SHOWN.



Know what's below.  
Call before you dig.



DATE	DESCRIPTION

16745 W. Bluemound Road  
Brookfield, WI 53005-5938  
(262) 781-1000  
rasmith.com



CREATIVITY BEYOND ENGINEERING  
Brookfield, WI | Milwaukee, WI | Appleton, WI | Madison, WI | Cedarburg, WI  
Menomonee Falls, WI | Naperville, IL | Irvine, CA

WEST TOWNE MALL REDEVELOPMENT  
CITY OF MADISON, WI

PEDESTRIAN CONNECTION  
EXHIBIT

© COPYRIGHT 2020  
R.A. Smith, Inc.  
DATE: 12/11/2020  
SCALE: 1" = 50'  
JOB NO. 3200225  
PROJECT MANAGER:  
MATT P. KOCOUREK, PE  
DESIGNED BY: NJW/LJH  
CHECKED BY: LJH

SHEET NUMBER  
EX-1





**EAST ELEVATION - Main Entrance (Patio Location May Vary)**

Scale: N.T.S.



**NORTH ELEVATION- Rear- Back of House**

Scale: N.T.S.

Scheme #1B RED - APRIL 2nd, 2019

material finish schedule

material schedule					
reference key	material	material specification	reference key	material	material specification
1	ALUMINUM STOREFRONT	2"W x 4'-1/2"D THERMALLY BROKEN PRE-FIN. ALUM. STOREFRONT W/ 1" INSULATED GLASS CENTER SET. CLJ CASTLE SERIES SKOOT OUTSIDE GLAZED OR EQUAL. COLORS: GLASS, "SOLAR GRAY" SOLARBAN 60 (TEMPERED AS REQUIRED), ALUM. CLEAR AND.	10	RIBBED METAL PANEL	PRECISION SERIES WALL PANEL HIGHLINE C2, (CLIP) 24GA. STEEL PAC-CLAD PETERSEN COLOR: CHARCOAL
1A	ALUMINUM STOREFRONT	2"W x 4'-1/2"D NON-THERMALLY BROKEN PRE-FIN. ALUM. STOREFRONT W/ 1/4" CENTER SET, OLD CASTLE SERIES. FG-1000 OUTSIDE GLAZED OR EQUAL. COLORS: GLASS, CLEAR (TEMPERED AS REQUIRED), ALUM. CLEAR AND.	11	MISC. BRAKE METAL	PAC-CLAD PETERSEN COLOR: BONE WHITE
2	FACE BRICK	UTILITY SIZE FACE BRICK RUNNING BOND SIOUX CITY BRICK COLOR: EBONITE SMOOTH	12	MISC. BRAKE METAL	PAC-CLAD PETERSEN COLOR: SILVERSMITH
3	FACE BRICK	UTILITY SIZE FACE BRICK RUNNING BOND SIOUX CITY BRICK COLOR: REDBROWN RANGE	13	SOFFIT PANELS	PRE-FINISHED SOFFIT PANELS PAC-850 HALF VENT, .032 ALUM. WITH TRIM PAC-CLAD PETERSEN OR EQUAL. COLOR: CARDINAL RED
4	PRECAST STONE TRIM	SMOOTH FACE CAST STONE TRIM PIECES SIZE AND SHAPE VARY RENAISSANCE STONE COLOR: ALABASTER	14	STAINLESS STEEL	BRUSHED. REFER TO DOOR SCHEDULE SHEET A8.0
5	CORRUGATED WALL PANEL	PRE-FINISHED 7/8" DEEP CORRUGATED WALL PANELS, 24GA. STEEL WITH TRIM PAC-CLAD PETERSEN COLOR: COLONIAL RED	15	MISC. BRAKE METAL	CLEAR AND. ALUM. TO MATCH STOREFRONT
6	COMPOSITE WALL PANEL	PRE-FINISHED QUICKPANEL WALL PANEL SYSTEM WITH MATCHING TRIM COLOR: BONE WHITE	16	MISC. BRAKE METAL	PAC-CLAD PETERSEN COLOR: CHARCOAL
7	COMPOSITE WALL PANEL	PRE-FINISHED QUICKPANEL WALL PANEL SYSTEM WITH MATCHING TRIM COLOR: SILVERSMITH	17	PAINT	PAINT DOOR AND TRIM TO MATCH ADJACENT SURFACES
8	COMPOSITE WALL PANEL	PRE-FINISHED QUICKPANEL WALL PANEL SYSTEM WITH MATCHING TRIM COLOR: RUBY RED	18	METAL FENCE	ORNAMENTAL IRON FENCE OR EQUAL, SEE DETAIL DRAWING A1.3, POWDER COAT COLOR: 1B0
9	MISC. BRAKE METAL	PAC-CLAD PETERSEN COLOR: CARDINAL RED	19	MISC. BRAKE METAL	PAC-CLAD PETERSEN COLOR: SILVERSMITH
			3	ORNAMENTAL FEATURE	REFER TO AS SERIES DRAWINGS & SIGN PACKAGE

18 | 17 | 16 | 15 | 14 | 13 | 12 | 11 | 10 | 9 | 8 | 7 | 6 | 5 | 4 | 3 | 2 | 1 | 1A | 1B | 1C | 1D | 1E | 1F | 1G | 1H | 1I | 1J | 1K | 1L | 1M | 1N | 1O | 1P | 1Q | 1R | 1S | 1T | 1U | 1V | 1W | 1X | 1Y | 1Z | 20 | 21 | 22 | 23 | 24 | 25 | 26 | 27 | 28 | 29 | 30 | 31 | 32 | 33 | 34 | 35 | 36 | 37 | 38 | 39 | 40 | 41 | 42 | 43 | 44 | 45 | 46 | 47 | 48 | 49 | 50 | 51 | 52 | 53 | 54 | 55 | 56 | 57 | 58 | 59 | 60 | 61 | 62 | 63 | 64 | 65 | 66 | 67 | 68 | 69 | 70 | 71 | 72 | 73 | 74 | 75 | 76 | 77 | 78 | 79 | 80 | 81 | 82 | 83 | 84 | 85 | 86 | 87 | 88 | 89 | 90 | 91 | 92 | 93 | 94 | 95 | 96 | 97 | 98 | 99 | 100 | 101 | 102 | 103 | 104 | 105 | 106 | 107 | 108 | 109 | 110 | 111 | 112 | 113 | 114 | 115 | 116 | 117 | 118 | 119 | 120 | 121 | 122 | 123 | 124 | 125 | 126 | 127 | 128 | 129 | 130 | 131 | 132 | 133 | 134 | 135 | 136 | 137 | 138 | 139 | 140 | 141 | 142 | 143 | 144 | 145 | 146 | 147 | 148 | 149 | 150 | 151 | 152 | 153 | 154 | 155 | 156 | 157 | 158 | 159 | 160 | 161 | 162 | 163 | 164 | 165 | 166 | 167 | 168 | 169 | 170 | 171 | 172 | 173 | 174 | 175 | 176 | 177 | 178 | 179 | 180 | 181 | 182 | 183 | 184 | 185 | 186 | 187 | 188 | 189 | 190 | 191 | 192 | 193 | 194 | 195 | 196 | 197 | 198 | 199 | 200 | 201 | 202 | 203 | 204 | 205 | 206 | 207 | 208 | 209 | 210 | 211 | 212 | 213 | 214 | 215 | 216 | 217 | 218 | 219 | 220 | 221 | 222 | 223 | 224 | 225 | 226 | 227 | 228 | 229 | 230 | 231 | 232 | 233 | 234 | 235 | 236 | 237 | 238 | 239 | 240 | 241 | 242 | 243 | 244 | 245 | 246 | 247 | 248 | 249 | 250 | 251 | 252 | 253 | 254 | 255 | 256 | 257 | 258 | 259 | 260 | 261 | 262 | 263 | 264 | 265 | 266 | 267 | 268 | 269 | 270 | 271 | 272 | 273 | 274 | 275 | 276 | 277 | 278 | 279 | 280 | 281 | 282 | 283 | 284 | 285 | 286 | 287 | 288 | 289 | 290 | 291 | 292 | 293 | 294 | 295 | 296 | 297 | 298 | 299 | 300 | 301 | 302 | 303 | 304 | 305 | 306 | 307 | 308 | 309 | 310 | 311 | 312 | 313 | 314 | 315 | 316 | 317 | 318 | 319 | 320 | 321 | 322 | 323 | 324 | 325 | 326 | 327 | 328 | 329 | 330 | 331 | 332 | 333 | 334 | 335 | 336 | 337 | 338 | 339 | 340 | 341 | 342 | 343 | 344 | 345 | 346 | 347 | 348 | 349 | 350 | 351 | 352 | 353 | 354 | 355 | 356 | 357 | 358 | 359 | 360 | 361 | 362 | 363 | 364 | 365 | 366 | 367 | 368 | 369 | 370 | 371 | 372 | 373 | 374 | 375 | 376 | 377 | 378 | 379 | 380 | 381 | 382 | 383 | 384 | 385 | 386 | 387 | 388 | 389 | 390 | 391 | 392 | 393 | 394 | 395 | 396 | 397 | 398 | 399 | 400 | 401 | 402 | 403 | 404 | 405 | 406 | 407 | 408 | 409 | 410 | 411 | 412 | 413 | 414 | 415 | 416 | 417 | 418 | 419 | 420 | 421 | 422 | 423 | 424 | 425 | 426 | 427 | 428 | 429 | 430 | 431 | 432 | 433 | 434 | 435 | 436 | 437 | 438 | 439 | 440 | 441 | 442 | 443 | 444 | 445 | 446 | 447 | 448 | 449 | 450 | 451 | 452 | 453 | 454 | 455 | 456 | 457 | 458 | 459 | 460 | 461 | 462 | 463 | 464 | 465 | 466 | 467 | 468 | 469 | 470 | 471 | 472 | 473 | 474 | 475 | 476 | 477 | 478 | 479 | 480 | 481 | 482 | 483 | 484 | 485 | 486 | 487 | 488 | 489 | 490 | 491 | 492 | 493 | 494 | 495 | 496 | 497 | 498 | 499 | 500 | 501 | 502 | 503 | 504 | 505 | 506 | 507 | 508 | 509 | 510 | 511 | 512 | 513 | 514 | 515 | 516 | 517 | 518 | 519 | 520 | 521 | 522 | 523 | 524 | 525 | 526 | 527 | 528 | 529 | 530 | 531 | 532 | 533 | 534 | 535 | 536 | 537 | 538 | 539 | 540 | 541 | 542 | 543 | 544 | 545 | 546 | 547 | 548 | 549 | 550 | 551 | 552 | 553 | 554 | 555 | 556 | 557 | 558 | 559 | 560 | 561 | 562 | 563 | 564 | 565 | 566 | 567 | 568 | 569 | 570 | 571 | 572 | 573 | 574 | 575 | 576 | 577 | 578 | 579 | 580 | 581 | 582 | 583 | 584 | 585 | 586 | 587 | 588 | 589 | 590 | 591 | 592 | 593 | 594 | 595 | 596 | 597 | 598 | 599 | 600 | 601 | 602 | 603 | 604 | 605 | 606 | 607 | 608 | 609 | 610 | 611 | 612 | 613 | 614 | 615 | 616 | 617 | 618 | 619 | 620 | 621 | 622 | 623 | 624 | 625 | 626 | 627 | 628 | 629 | 630 | 631 | 632 | 633 | 634 | 635 | 636 | 637 | 638 | 639 | 640 | 641 | 642 | 643 | 644 | 645 | 646 | 647 | 648 | 649 | 650 | 651 | 652 | 653 | 654 | 655 | 656 | 657 | 658 | 659 | 660 | 661 | 662 | 663 | 664 | 665 | 666 | 667 | 668 | 669 | 670 | 671 | 672 | 673 | 674 | 675 | 676 | 677 | 678 | 679 | 680 | 681 | 682 | 683 | 684 | 685 | 686 | 687 | 688 | 689 | 690 | 691 | 692 | 693 | 694 | 695 | 696 | 697 | 698 | 699 | 700 | 701 | 702 | 703 | 704 | 705 | 706 | 707 | 708 | 709 | 710 | 711 | 712 | 713 | 714 | 715 | 716 | 717 | 718 | 719 | 720 | 721 | 722 | 723 | 724 | 725 | 726 | 727 | 728 | 729 | 730 | 731 | 732 | 733 | 734 | 735 | 736 | 737 | 738 | 739 | 740 | 741 | 742 | 743 | 744 | 745 | 746 | 747 | 748 | 749 | 750 | 751 | 752 | 753 | 754 | 755 | 756 | 757 | 758 | 759 | 760 | 761 | 762 | 763 | 764 | 765 | 766 | 767 | 768 | 769 | 770 | 771 | 772 | 773 | 774 | 775 | 776 | 777 | 778 | 779 | 780 | 781 | 782 | 783 | 784 | 785 | 786 | 787 | 788 | 789 | 790 | 791 | 792 | 793 | 794 | 795 | 796 | 797 | 798 | 799 | 800 | 801 | 802 | 803 | 804 | 805 | 806 | 807 | 808 | 809 | 810 | 811 | 812 | 813 | 814 | 815 | 816 | 817 | 818 | 819 | 820 | 821 | 822 | 823 | 824 | 825 | 826 | 827 | 828 | 829 | 830 | 831 | 832 | 833 | 834 | 835 | 836 | 837 | 838 | 839 | 840 | 841 | 842 | 843 | 844 | 845 | 846 | 847 | 848 | 849 | 850 | 851 | 852 | 853 | 854 | 855 | 856 | 857 | 858 | 859 | 860 | 861 | 862 | 863 | 864 | 865 | 866 | 867 | 868 | 869 | 870 | 871 | 872 | 873 | 874 | 875 | 876 | 877 | 878 | 879 | 880 | 881 | 882 | 883 | 884 | 885 | 886 | 887 | 888 | 889 | 890 | 891 | 892 | 893 | 894 | 895 | 896 | 897 | 898 | 899 | 900 | 901 | 902 | 903 | 904 | 905 | 906 | 907 | 908 | 909 | 910 | 911 | 912 | 913 | 914 | 915 | 916 | 917 | 918 | 919 | 920 | 921 | 922 | 923 | 924 | 925 | 926 | 927 | 928 | 929 | 930 | 931 | 932 | 933 | 934 | 935 | 936 | 937 | 938 | 939 | 940 | 941 | 942 | 943 | 944 | 945 | 946 | 947 | 948 | 949 | 950 | 951 | 952 | 953 | 954 | 955 | 956 | 957 | 958 | 959 | 960 | 961 | 962 | 963 | 964 | 965 | 966 | 967 | 968 | 969 | 970 | 971 | 972 | 973 | 974 | 975 | 976 | 977 | 978 | 979 | 980 | 981 | 982 | 983 | 984 | 985 | 986 | 987 | 988 | 989 | 990 | 991 | 992 | 993 | 994 | 995 | 996 | 997 | 998 | 999 | 1000 | 1001 | 1002 | 1003 | 1004 | 1005 | 1006 | 1007 | 1008 | 1009 | 1010 | 1011 | 1012 | 1013 | 1014 | 1015 | 1016 | 1017 | 1018 | 1019 | 1020 | 1021 | 1022 | 1023 | 1024 | 1025 | 1026 | 1027 | 1028 | 1029 | 1030 | 1031 | 1032 | 1033 | 1034 | 1035 | 1036 | 1037 | 1038 | 1039 | 1040 | 1041 | 1042 | 1043 | 1044 | 1045 | 1046 | 1047 | 1048 | 1049 | 1050 | 1051 | 1052 | 1053 | 1054 | 1055 | 1056 | 1057 | 1058 | 1059 | 1060 | 1061 | 1062 | 1063 | 1064 | 1065 | 1066 | 1067 | 1068 | 1069 | 1070 | 1071 | 1072 | 1073 | 1074 | 1075 | 1076 | 1077 | 1078 | 1079 | 1080 | 1081 | 1082 | 1083 | 1084 | 1085 | 1086 | 1087 | 1088 | 1089 | 1090 | 1091 | 1092 | 1093 | 1094 | 1095 | 1096 | 1097 | 1098 | 1099 | 1100 | 1101 | 1102 | 1103 | 1104 | 1105 | 1106 | 1107 | 1108 | 1109 | 1110 | 1111 | 1112 | 1113 | 1114 | 1115 | 1116 | 1117 | 1118 | 1119 | 1120 | 1121 | 1122 | 1123 | 1124 | 1125 | 1126 | 1127 | 1128 | 1129 | 1130 | 1131 | 1132 | 1133 | 1134 | 1135 | 1136 | 1137 | 1138 | 1139 | 1140 | 1141 | 1142 | 1143 | 1144 | 1145 | 1146 | 1147 | 1148 | 1149 | 1150 | 1151 | 1152 | 1153 | 1154 | 1155 | 1156 | 1157 | 1158 | 1159 | 1160 | 1161 | 1162 | 1163 | 1164 | 1165 | 1166 | 1167 | 1168 | 1169 | 1170 | 1171 | 1172 | 1173 | 1174 | 1175 | 1176 | 1177 | 1178 | 1179 | 1180 | 1181 | 1182 | 1183 | 1184 | 1185 | 1186 | 1187 | 1188 | 1189 | 1190 | 1191 | 1192 | 1193 | 1194 | 1195 | 1196 | 1197 | 1198 | 1199 | 1200 | 1201 | 1202 | 1203 | 1204 | 1205 | 1206 | 1207 | 1208 | 1209 | 1210 | 1211 | 1212 | 1213 | 1214 | 1215 | 1216 | 1217 | 1218 | 1219 | 1220 | 1221 | 1222 | 1223 | 1224 | 1225 | 1226 | 1227 | 1228 | 1229 | 1230 | 1231 | 1232 | 1233 | 1234 | 1235 | 1236 | 1237 | 1238 | 1239 | 1240 | 1241 | 1242 | 1243 | 1244 | 1245 | 1246 | 1247 | 1248 | 1249 | 1250 | 1251 | 1252 | 1253 | 1254 | 1255 | 1256 | 1257 | 1258 | 1259 | 1260 | 1261 | 1262 | 1263 | 1264 | 1265 | 1266 | 1267 | 1268 | 1269 | 1270 | 1271 | 1272 | 1273 | 1274 | 1275 | 1276 | 1277 | 1278 | 1279 | 1280 | 1281 | 1282 | 1283 | 1284 | 1285 | 1286 | 1287 | 1288 | 1289 | 1290 | 1291 | 1292 | 1293 | 1294 | 1295 | 1296 | 1297 | 1298 | 1299 | 1300 | 1301 | 1302 | 1303 | 1304 | 1305 | 1306 | 1307 | 1308 | 1309 | 1310 | 1311 | 1312 | 1313 | 1314 | 1315 | 1316 | 1317 | 1318 | 1319 | 1320 | 1321 | 1322 | 1323 | 1324 | 1325 | 1326 | 1327 | 1328 | 1329 | 1330 | 1331 | 1332 | 1333 | 1334 | 1335 | 1336 | 1337 | 1338 | 1339 | 1340 | 1341 | 1342 | 1343 | 1344 | 1345 | 1346 | 1347 | 1348 | 1349 | 1350 | 1351 | 1352 | 1353 | 1354 | 1355 | 1356 | 1357 | 1358 | 1359 | 1360 | 1361 | 1362 | 1363 | 1364 | 1365 | 1366 | 1367 | 1368 | 1369 | 1370 | 1371 | 1372 | 1373 | 1374 | 1375 | 1376 | 1377 | 1378 | 1379 | 1380 | 1381 | 1382 | 1383 | 1384 | 1385 | 1386 | 1387 | 1388 | 1389 | 1390 | 1391 | 1392 | 1393 | 1394 | 1395 | 1396 | 1397 | 1398 | 1399 | 1400 | 1401 | 1402 | 1403 | 1404 | 1405 | 1406 | 1407 | 1408 | 1409 | 1410 | 1411 | 1412 | 1413 | 1414 | 1415 | 1416 | 1417 | 1418 | 1419 | 1420 | 1421 | 1422 | 1423 | 1424 | 1425 | 1426 | 1427 | 1428 | 1429 | 1430 | 1431 | 1432 | 1433 | 1434 | 1435 | 1436 | 1437 | 1438 | 1439 | 1440 | 1441 | 1442 | 1443 | 1444 | 1445 | 1446 | 1447 | 1448 | 1449 | 1450 | 1451 | 1452 | 1453 | 1454 | 1455 | 1456 | 1457 | 1458 | 1459 | 1460 | 1461 | 1462 | 1463 | 1464 | 1465 | 1466 | 1467 | 1468 | 1469 | 1470 | 1471 | 1472 | 1473 | 1474 | 1475 | 1476 | 1477 | 1478 | 1479 | 1480 | 1481 | 1482 | 1483 | 1484 | 1485 | 1486 | 1487 | 1488 | 1489 | 1490 | 1491 | 1492 | 1493 | 1494 | 1495 | 1496 | 1497 | 1498 | 1499 | 1500 | 1501 | 1502 | 1503 | 1504 | 1505 | 1506 | 1507 | 1508 | 1509 | 1510 | 1511 | 1512 | 1513 | 1514 | 1515 | 1516 | 1517 | 1518 | 1519 | 1520 | 1521 | 1522 | 1523 | 1524 | 1525 | 1526 | 1527 | 1528 | 1529 | 1530 | 1531 | 1532 | 1533 | 1534 | 1535 | 1536 | 1537 | 1538 | 1539 | 1540 | 1541 | 1542 | 1543 | 1544 | 1545 | 1546 | 1547 | 1548 | 1549 | 1550 | 1551 | 1552 | 1553 | 1554 | 1555 | 1556 | 1557 | 1558 | 1559 | 1560 | 1561 | 1562 | 1563 | 1564 | 1565 | 1566 | 1567 | 1568 | 1569 | 1570 | 1571 | 1572 | 1573 | 1574 | 1575 | 1576 | 1577 | 1578 | 1579 | 1580 | 1581 | 1582 | 1583 | 1584 | 1585 | 1586 | 1587 | 1588 | 1589 | 1590 | 1591 | 1592 | 1593 | 1594 | 1595 | 1596 | 1597 | 1598 | 1599 | 1600 | 1601 | 1602 | 1603 | 1604 | 1605 | 1606 | 1607 | 1608 | 1609 | 1610 | 1611 | 1612 | 1613 | 1614 | 1615 | 1616 | 1617 | 1618 | 1619 | 1620 | 1621 | 1622 | 1623 | 1624 | 1625 | 1626 | 1627 | 1628 | 1629 | 1630 | 1631 | 1632 | 1633 | 1634 | 1635 | 1636 | 1637 | 1638 | 1639 | 1640 | 1641 | 1642 | 1643 | 1644 | 1645 | 1646 | 1647 | 1648 | 1649 | 1650 | 1651 | 1652 | 1653 | 1654 | 1655 | 1656 | 1657 | 1658 | 1659 | 1660 | 1661 | 1662 | 1663 | 1664 | 1665 | 1666 | 1667 | 1668 | 1669 | 1670 | 1671 | 1672 | 1673 | 1674 | 1675 | 1676 | 1677 | 1678 | 1679 | 1680 | 1681 | 1682 | 1683 | 1684 | 1685 | 1686 | 1687 | 1688 | 1689 | 1690 | 1691 | 1692 | 1693 | 1694 | 1695 | 1696 | 1697 | 1698 | 1699 | 1700 | 1701 | 1702 | 1703 | 1704 | 1705 | 1706 | 1707 | 1708 | 1709 | 1710 | 1711 | 1712 | 1713 | 1714 | 1715 | 1716 | 1717 | 1718 | 1719 | 1720 | 1721 | 1722 | 1723 | 1724 | 1725 | 1726 | 1727 | 1728 | 1729 | 1730 | 1731 | 1732 | 1733 | 1734 | 1735 | 1736 | 1737 | 1738 | 1739 | 1740 | 1741 | 1742 | 1743 | 1744 | 1745 | 1746 | 1747 | 1748 | 1749 | 1750 | 1751 | 1752 | 1753 | 1754 | 1755 | 1756 | 1757 | 1758 | 1759 | 1760 | 1761 | 1762 | 1763 | 1764 | 1765 | 1766 | 1767 | 1768 | 1769 | 1770 | 1771 | 1772 | 1773 | 1





WEST ELEVATION - Drive-Thru Service



SOUTH ELEVATION  
Scale: N.T.S.

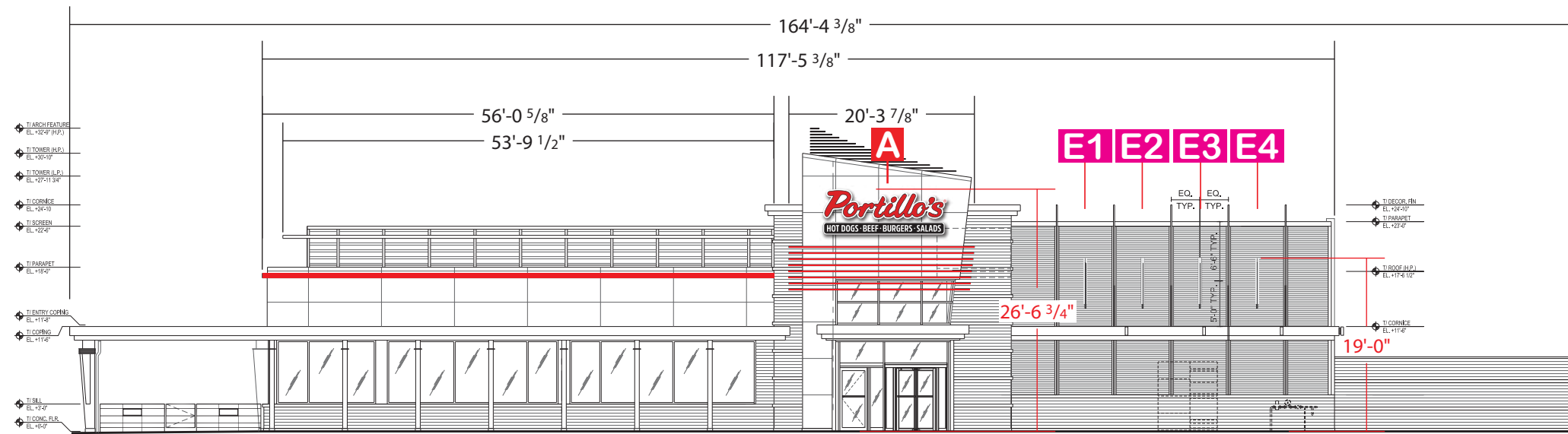
Scheme #1B RED - APRIL 2nd, 2019

material finish schedule

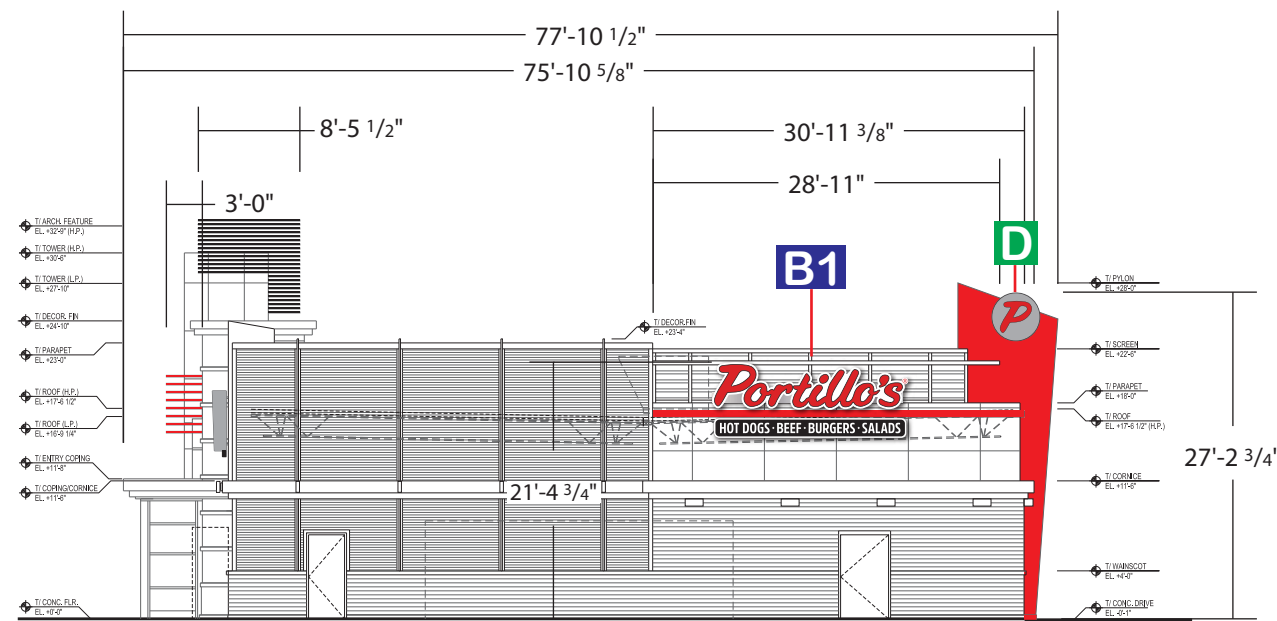
material schedule					
reference key	material	material specification	reference key	material	material specification
1	ALUMINUM STOREFRONT	2"W x 4'-1/2"D THERMALLY BROKEN PRE-FIN. ALUM. STOREFRONT W/ 1" INSULATED GLASS CENTER SET. CLD CASTLE SERIES 3000T OUTSIDE GLAZED OR EQUAL. COLORS: GLASS, "SOLAR GRAY" SOLARBAN 60 (TEMPERED AS REQUIRED), ALUM. CLEAR ANOD.	10	RIBBED METAL PANEL	PRECISION SERIES WALL PANEL HIGHLINE C2, (CLIP) 24GA. STEEL PAC-CLAD PETERSEN COLOR: CHARCOAL
1A	ALUMINUM STOREFRONT	2"W x 4'-1/2"D NON-THERMALLY BROKEN PRE-FIN. ALUM. STOREFRONT W/ 1/4" CENTER SET. CLD CASTLE SERIES FG-1000 OUTSIDE GLAZED OR EQUAL. COLORS: GLASS, CLEAR (TEMPERED AS REQUIRED), ALUM. CLEAR ANOD.	11	MISC. BRAKE METAL	PAC-CLAD PETERSEN COLOR: BONE WHITE
2	FACE BRICK	UTILITY SIZE FACE BRICK RUNNING BOND SIOUX CITY BRICK COLOR: EBONITE SMOOTH	12	MISC. BRAKE METAL	PAC-CLAD PETERSEN COLOR: SILVERSMITH
3	FACE BRICK	UTILITY SIZE FACE BRICK RUNNING BOND SIOUX CITY BRICK COLOR: REDBROWN RANGE	13	SOFFIT PANELS	PRE-FINISHED SOFFIT PANELS PAC-850 HALF VENT .032 ALUM. WITH TRIM PAC-CLAD PETERSEN OR EQUAL. COLOR: CARDINAL RED
4	PRECAST STONE TRIM	SMOOTH FACE CAST STONE TRIM PIECES SIZE AND SHAPE VARY RENAISSANCE STONE COLOR: ALABASTER	14	STAINLESS STEEL	BRUSHED. REFER TO DOOR SCHEDULE SHEET A8.0
5	CORRUGATED WALL PANEL	PRE-FINISHED 7/8" DEEP CORRUGATED WALL PANELS. 24GA. STEEL WITH TRIM PAC-CLAD PETERSEN COLOR: COLONIAL RED	15	MISC. BRAKE METAL	CLEAR ANOD. ALUM. TO MATCH STOREFRONT
6	COMPOSITE WALL PANEL	PRE-FINISHED QUICKPANEL WALL PANEL SYSTEM WITH MATCHING TRIM COLOR: BONE WHITE	16	MISC. BRAKE METAL	PAC-CLAD PETERSEN COLOR: CHARCOAL
7	COMPOSITE WALL PANEL	PRE-FINISHED QUICKPANEL WALL PANEL SYSTEM WITH MATCHING TRIM COLOR: SILVERSMITH	17	PAINT	PAINT DOOR AND TRIM TO MATCH ADJACENT SURFACES
8	COMPOSITE WALL PANEL	PRE-FINISHED QUICKPANEL WALL PANEL SYSTEM WITH MATCHING TRIM COLOR: RUBY RED	18	METAL FENCE	ORNAMENTAL IRON FENCE OR EQUAL. SEE DETAIL DRAWING A1.3, POWDER COAT COLOR: TBD
9	MISC. BRAKE METAL	PAC-CLAD PETERSEN COLOR: CARDINAL RED	19	MISC. BRAKE METAL	PAC-CLAD PETERSEN COLOR: SILVERSMITH
			3	ORNAMENTAL FEATURE	REFER TO AS SERIES DRAWINGS & SIGN PACKAGE

B:\projects\mca\0218\02180002\_PRTNS0002 - W. Madson, WI, Madison\03\Buildings\Arch\_Eng\03\Color\ColorSchedule.dwg, plotted 12/18/2020 10:07 PM, user:dm201





EAST WALL EXTERIOR ELEVATION



SOUTH WALL EXTERIOR ELEVATION

ELEVATIONS

Scale:  
1/16"=1'-0"

**CUSTOMER APPROVAL**

BY: \_\_\_\_\_  
DATE: \_\_\_\_\_  W/O CHGS  W/ CHGS

**LANDLORD APPROVAL**

BY: \_\_\_\_\_  
DATE: \_\_\_\_\_  W/O CHGS  W/ CHGS

PROJECT: **Portillos**  
LOCATION:

LOCATIONS:  
9200 Valley Rd. | 2507 W. Villa Rita Dr.  
Prescott Valley, Phoenix,  
Arizona 86314 Arizona 85023  
**800-257-5095**



Account Executive:  
Gary Johnson

Designer:  
DF

Design Number:  
7064

Job Number:

DATE:  
03/06/2020

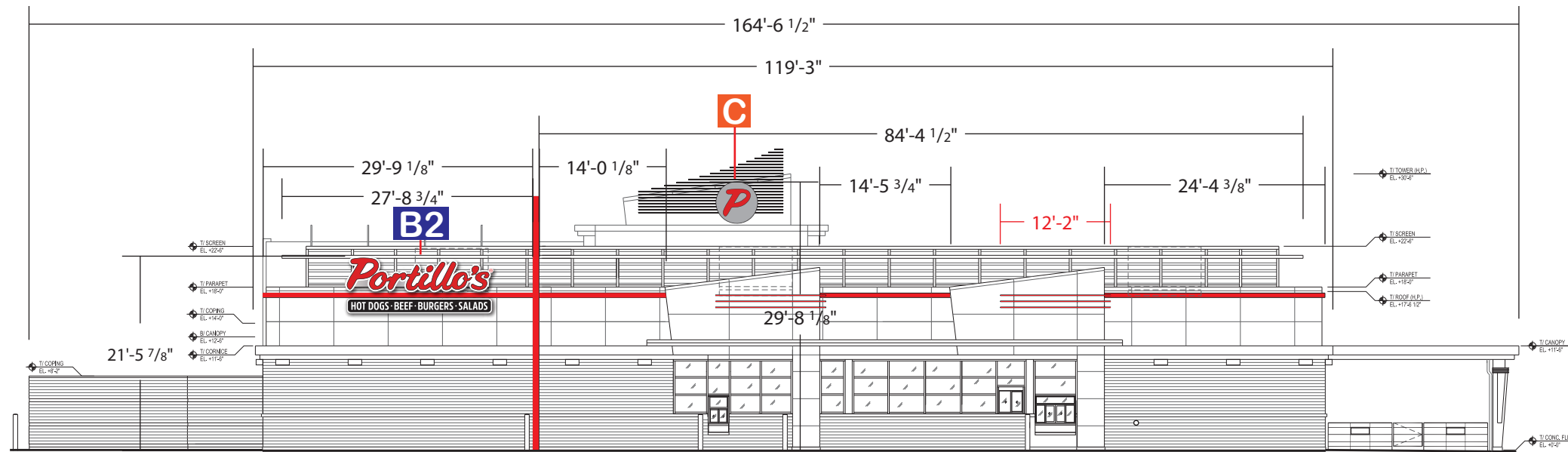
SCALE:  
AS NOTED

REVISIONS:  
R1 03/18/20 DF  
R2-06/11/2020 AL  
R3-06/25/2020 AL

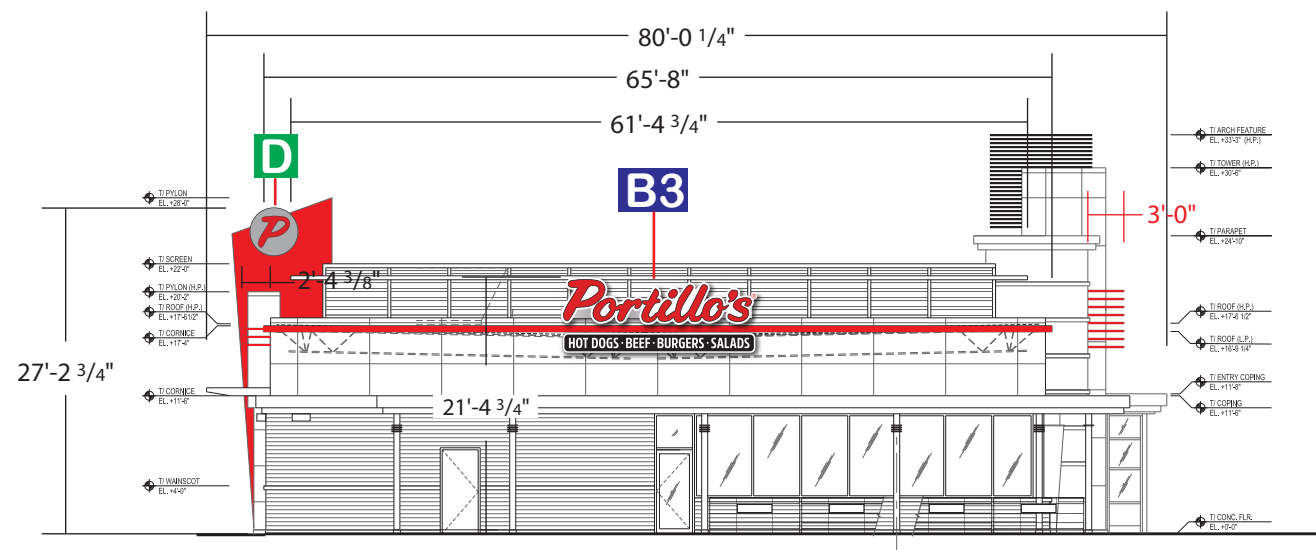
SHEET:  
**4** OF **18**

This custom design submitted for your personal use is the exclusive property of SIGNS PLUS. It may not be reproduced, copied, or exhibited in any fashion to anyone outside of your organization without the written permission of an authorized agent of SIGNS PLUS.





WEST WALL EXTERIOR ELEVATION



NORTH WALL EXTERIOR ELEVATION

ELEVATIONS

Scale:  
1/16"=1'-0"

**CUSTOMER APPROVAL**

BY: \_\_\_\_\_  
DATE: \_\_\_\_\_  W/O CHGS  W/ CHGS

**LANDLORD APPROVAL**

BY: \_\_\_\_\_  
DATE: \_\_\_\_\_  W/O CHGS  W/ CHGS

PROJECT: Portillos

LOCATION:

LOCATIONS:  
9200 Valley Rd. | 2507 W. Villa Rita Dr.  
Prescott Valley, Phoenix,  
Arizona 86314 Arizona 85023  
800-257-5095



Account Executive:  
Gary Johnson

Designer:  
DF

Design Number:  
7064

Job Number:

DATE:  
03/06/2020

SCALE:  
AS NOTED

REVISIONS:  
R1 03/18/20 DF  
R2-06/11/2020 AL  
R3-06/25/2020 AL

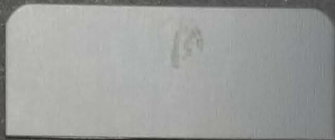
SHEET:

5 of 18

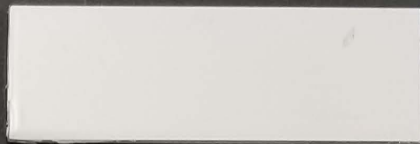




Sioux City Brick: Cabernet Burgundy



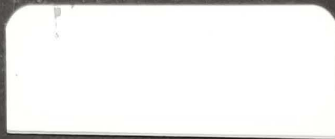
Charcoal



Bone White



Arriscraft White Rocked Georgia Sill



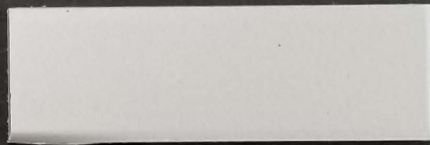
Clear Anodized Aluminum



Brite Red



Colonial Red



Silversmith



Sioux City Brick: Ebonite Smooth



SOUTH ELEVATION - Entrance and Outdoor Patio