

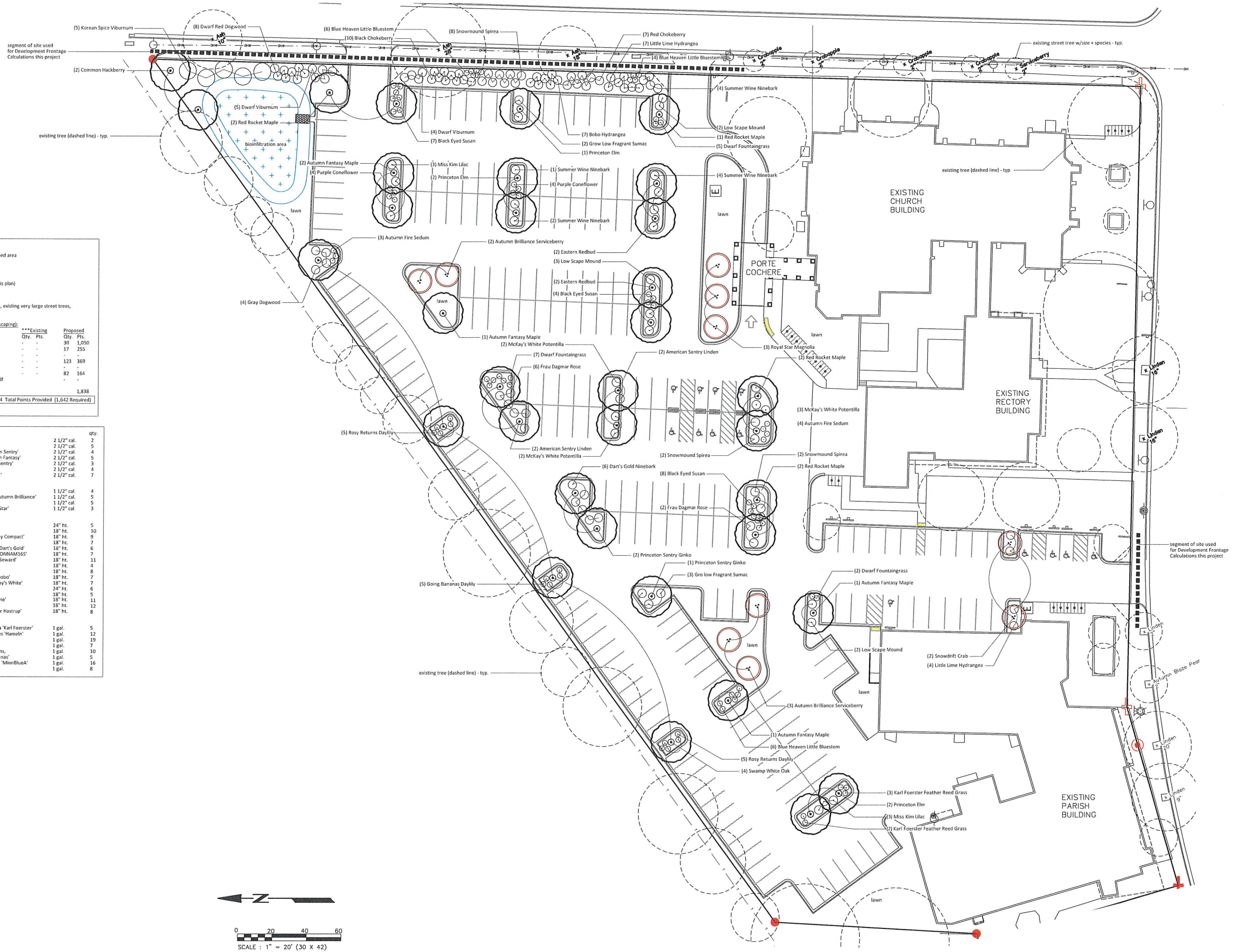


BEARINGS ARE REFERENCED TO THE
 WISCONSIN COUNTY COORDINATE
 SYSTEM, DANE COUNTY ZONE, NAD 83(97)

← N

0 20 40 60
 SCALE : 1" = 20' (30 X 42)





Landscape Calculations and Distribution
 One (5) landscape points shall be provided per each (300) sf of developed area
 Total sf of developed area this site = 98,512 sf
 Developed area divided by (300) x 5 = 1,642 Points Required

Development Frontage Landscaping
 Total lf of lot frontage = 400 (this project and segments as shown on this plan)
 Required Trees = 13 Provided Trees = 6**
 Required Shrubs = 67 Provided Shrubs = 67

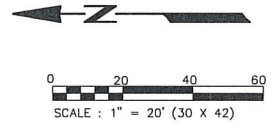
** Project requests waiver due to existing site constraints, limited space, existing very large street trees, and existing overhead power lines along Corry Street.

Tabulation of Points and Credits (includes Development Frontage Landscaping):

Plant Type/Element	Min. size	Points	Existing		Proposed	
			Qty.	Pts.	Qty.	Pts.
Overstory Deciduous Tree	2 1/2" cal.	35	-	-	30	1,050
Ornamental Tree	1 1/2" cal.	15	-	-	17	255
Upright evergreen shrub	3-4 feet tall	10	-	-	-	-
Shrub, deciduous	18" or 3 gal.	3	-	-	123	369
Shrub, evergreen	18" or 3 gal.	4	-	-	-	-
Ornamental grasses/perennials	18" or 3 gal.	2	-	-	82	164
Ornamental fence or wall	na	4 per 10 lf	-	-	-	-
Total						1,838
						1,824 Total Points Provided (1,642 Required)

*** No Existing plants were used in calculations for this project.

Overstory Deciduous Tree	Common Hackberry	2 1/2" cal.	2
Princeton Elm	2 1/2" cal.	5	4
American Sentry Linden	2 1/2" cal.	5	4
Autumn Fantasy Maple	2 1/2" cal.	5	5
Princeton Sentry Ginkgo	2 1/2" cal.	3	3
Swamp White Oak	2 1/2" cal.	4	4
Red Rocket Maple	2 1/2" cal.	7	7
Ornamental Tree	Eastern Redbud (Columbus strain)	1 1/2" cal.	4
Autumn Brilliance (tree form)	1 1/2" cal.	5	5
Snowdrift Crab	1 1/2" cal.	5	5
Royal Star Magnolia	1 1/2" cal.	3	3
Shrub, Deciduous	Korean Spice Viburnum	24" ht.	5
Black Chokeberry	Aronia melanocarpa	18" ht.	10
Dwarf American Cranberry Viburnum	Viburnum trilobum 'Bailey Compact'	18" ht.	9
Red Chokeberry	Aronia arbutifolia	18" ht.	7
Dart's Gold Ninebark	Physocarpus opulifolius 'Dart's Gold'	18" ht.	6
Low Scape Mound Chokeberry	Aronia melanocarpa 'UCONNM165'	18" ht.	7
Summer Wine Ninebark	Physocarpus opulifolius 'Seward'	18" ht.	11
Gray Dogwood	Cornus racemosa	18" ht.	4
Dwarf Red Dogwood	Cornus sericea 'Nelsley'	18" ht.	8
Bobo Hydrangea	Hydrangea paniculata 'Ivoboo'	18" ht.	7
McKay's White Potentilla	Potentilla fruticosa 'McKay's White'	18" ht.	7
Miss Kim Lilac	Syringa Patula 'Miss Kim'	24" ht.	6
Gro Low Fragrant Sumac	Rhus aromatica	18" ht.	5
Little Lime Hydrangea	Hydrangea paniculata 'Jane'	18" ht.	11
Snowmound Spirea	Spiraea nipponica	18" ht.	12
Frau Dagmar Rose	Rosa rugosa 'Frau Dagmar Hastrup'	18" ht.	8
Ornamental grasses/perennials	Karl Foerster Feather Reed Grass	1 gal.	5
Dwarf Fountaingrass	Pennisetum alopecuroides 'Hemele'	1 gal.	12
Black Eye Susan	Rudbeckia fulgida	1 gal.	19
Autumn Fire Sedum	Sedum 'Autumn Fire'	1 gal.	7
Rosy Returns Daylily	Hemerocallis 'Rosy Returns'	1 gal.	10
Going Bananas Daylily	Hemerocallis 'Going Bananas'	1 gal.	5
Blue Heaven Little Bluestem	Schizachyrium scoparium 'MinnBlueA'	1 gal.	16
Purple Coneflower	Echinacea purpurea	1 gal.	8

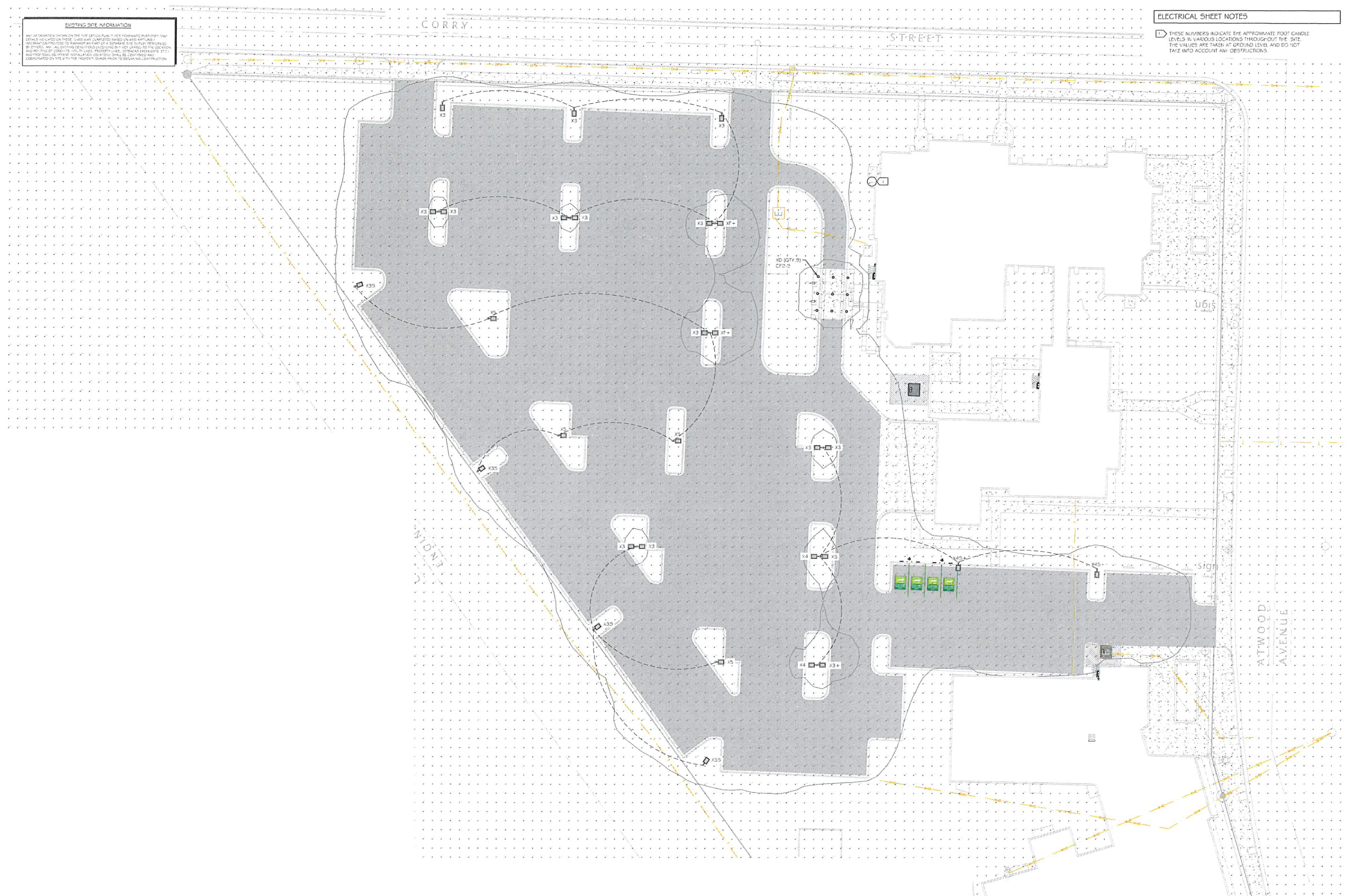


EXISTING SITE INFORMATION

ANY INFORMATION SHOWN ON THIS SHEET IS FOR INFORMATIONAL PURPOSES ONLY. DETAILS INDICATED ON THESE PLANS WAS COMPUTED BASED ON ASSUMPTIONS. THE INFORMATION PROVIDED IS BASED ON THE DATA PROVIDED TO THE DESIGNER BY THE CLIENT. ALL ELECTRICAL SYMBOLS AND NOTATIONS ARE TO BE USED IN ACCORDANCE WITH THE NATIONAL ELECTRICAL CODE (NEC) AND THE NATIONAL FIRE ALARM CODE (NFPA). THE DESIGNER IS NOT RESPONSIBLE FOR ANY ERRORS OR OMISSIONS THAT MAY OCCUR DURING THE CONSTRUCTION OF THE PROJECT.

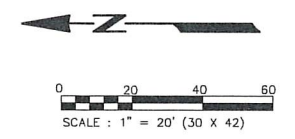
ELECTRICAL SHEET NOTES

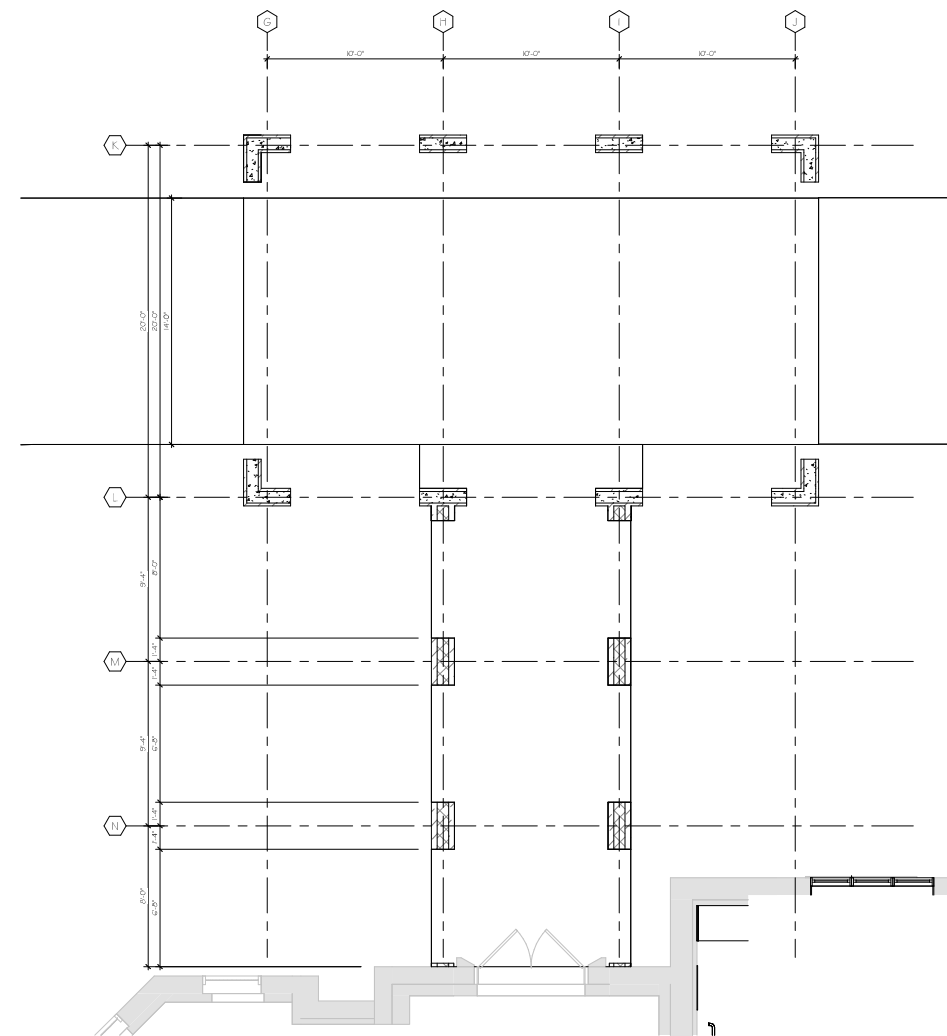
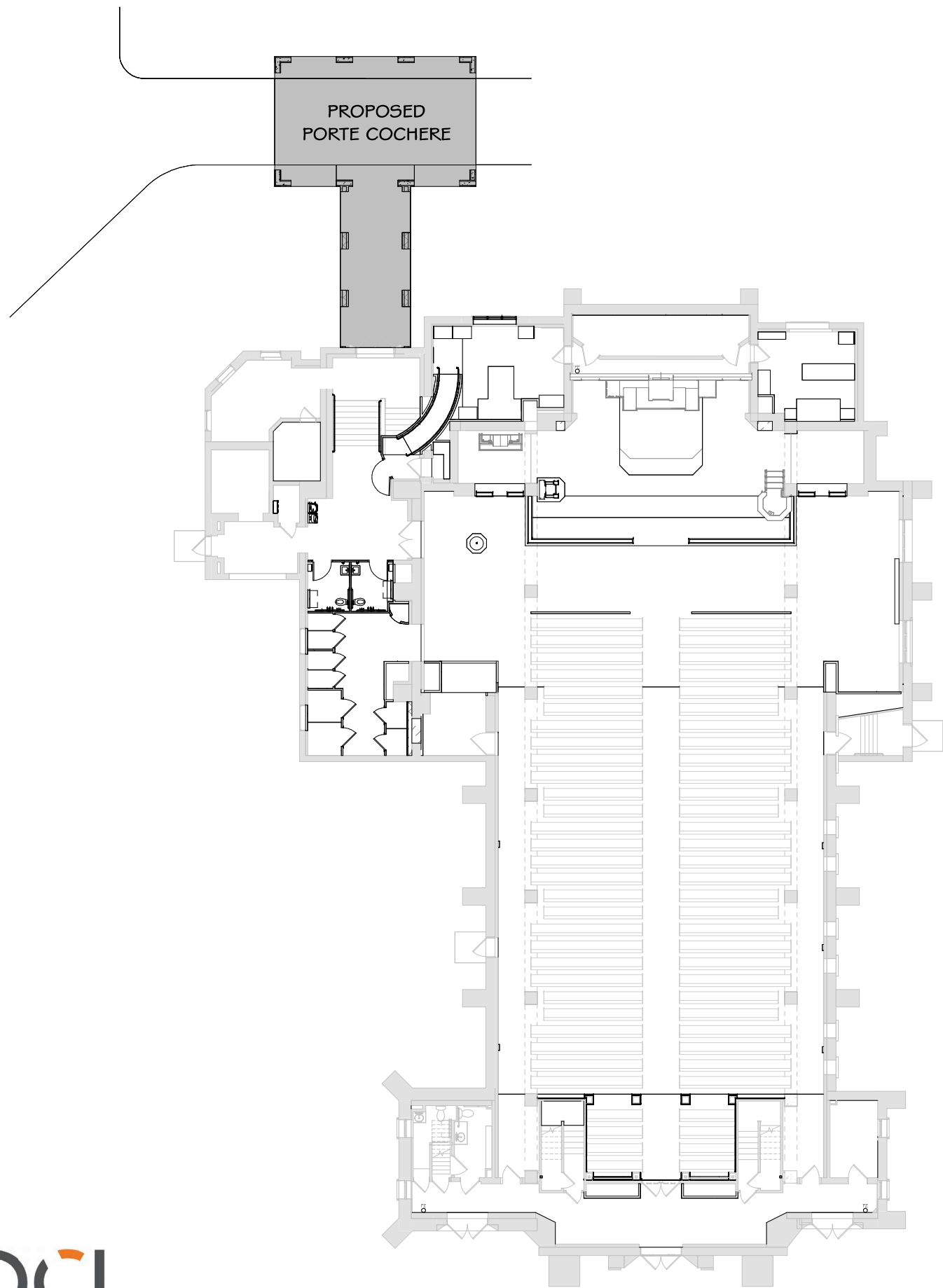
1. THESE NUMBERS INDICATE THE APPROXIMATE FOOT CANDLE LEVELS IN VARIOUS LOCATIONS THROUGHOUT THE SITE. THE VALUES ARE TAKEN AT GROUND LEVEL AND DO NOT TAKE INTO ACCOUNT ANY OBSTRUCTIONS.



EXTERIOR LIGHTING FIXTURE SCHEDULE

TAG	MANUFACTURER	CATALOG NUMBER	DESCRIPTION	VOLTAGE	LAMPS		MOUNTING	FINISH	TOTAL WATTS	CONTROL	NOTES
					#	TYPE					
X0	GOTHAM LIGHTING	EVIC 40320 GAP	LED DOWNLIGHT - 8" (4,000K, 3,000 LUMENS)	120	N/A	LED / DRIVER	CEILING - RECESSED	CLEAR	25	CONTACTOR	POPE COCHERE - WET LOCATION
X3	LITHONIA	DS90 LED F1 40K TSM	LED AREA LIGHT	120/277	N/A	LED / DRIVER	POLE - 30'-0" x 11'	TBD	35	CONTACTOR	EXTERIOR PARKING AREA (TYPE III DISTRIBUTION)
X3+	LITHONIA	DS90 LED F3 40K TSM	LED AREA LIGHT	120/277	N/A	LED / DRIVER	POLE - 30'-0" x 11'	TBD	69	CONTACTOR	EXTERIOR PARKING AREA (TYPE III DISTRIBUTION)
X3S	LITHONIA	DS90 LED F1 40K TSM HS	LED AREA LIGHT w/HOUSE SHIELD	120/277	N/A	LED / DRIVER	POLE - 30'-0" x 11'	TBD	35	CONTACTOR	EXTERIOR PARKING AREA (TYPE III DISTRIBUTION)
X4	LITHONIA	DS90 LED F1 40K TSM	LED AREA LIGHT	120/277	N/A	LED / DRIVER	POLE - 30'-0" x 11'	TBD	35	CONTACTOR	EXTERIOR PARKING AREA (TYPE III DISTRIBUTION)
X7+	LITHONIA	DS90 LED F4 40K TSM	LED AREA LIGHT	120/277	N/A	LED / DRIVER	POLE - 30'-0" x 11'	TBD	93	CONTACTOR	EXTERIOR PARKING AREA (FORWARD THROW)
X4S+	LITHONIA	DS90 LED F3 40K TSM	LED AREA LIGHT w/HOUSE SHIELD	120/277	N/A	LED / DRIVER	POLE - 30'-0" x 11'	TBD	35	CONTACTOR	EXTERIOR PARKING AREA (TYPE IV DISTRIBUTION)
X5	LITHONIA	DS90 LED F1 40K TSM	LED AREA LIGHT w/HOUSE SHIELD	120/277	N/A	LED / DRIVER	POLE - 30'-0" x 11'	TBD	35	CONTACTOR	EXTERIOR PARKING AREA (TYPE V DISTRIBUTION)

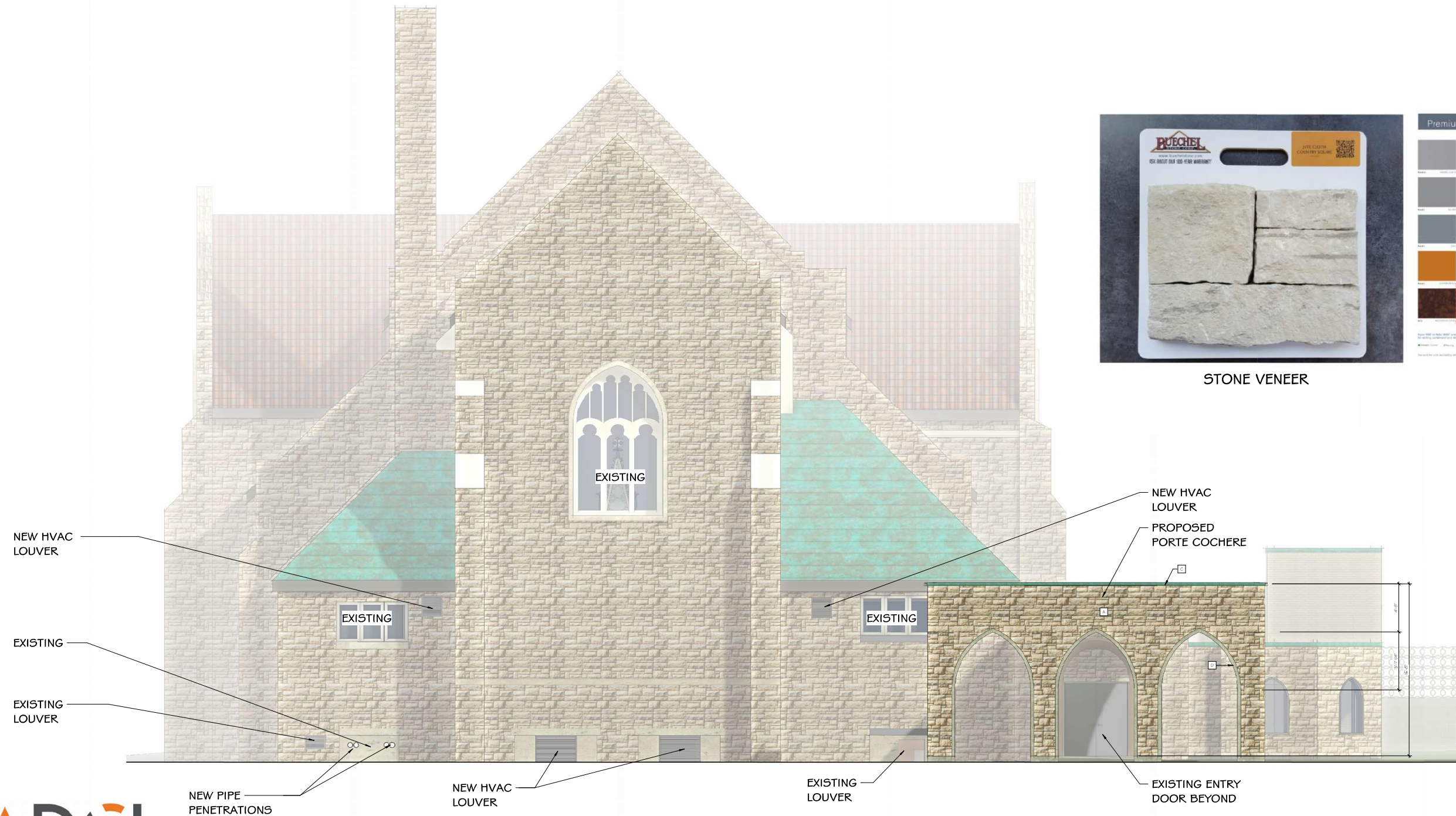




PORTE COCHERE PLAN

EXTERIOR FINISH SCHEDULE

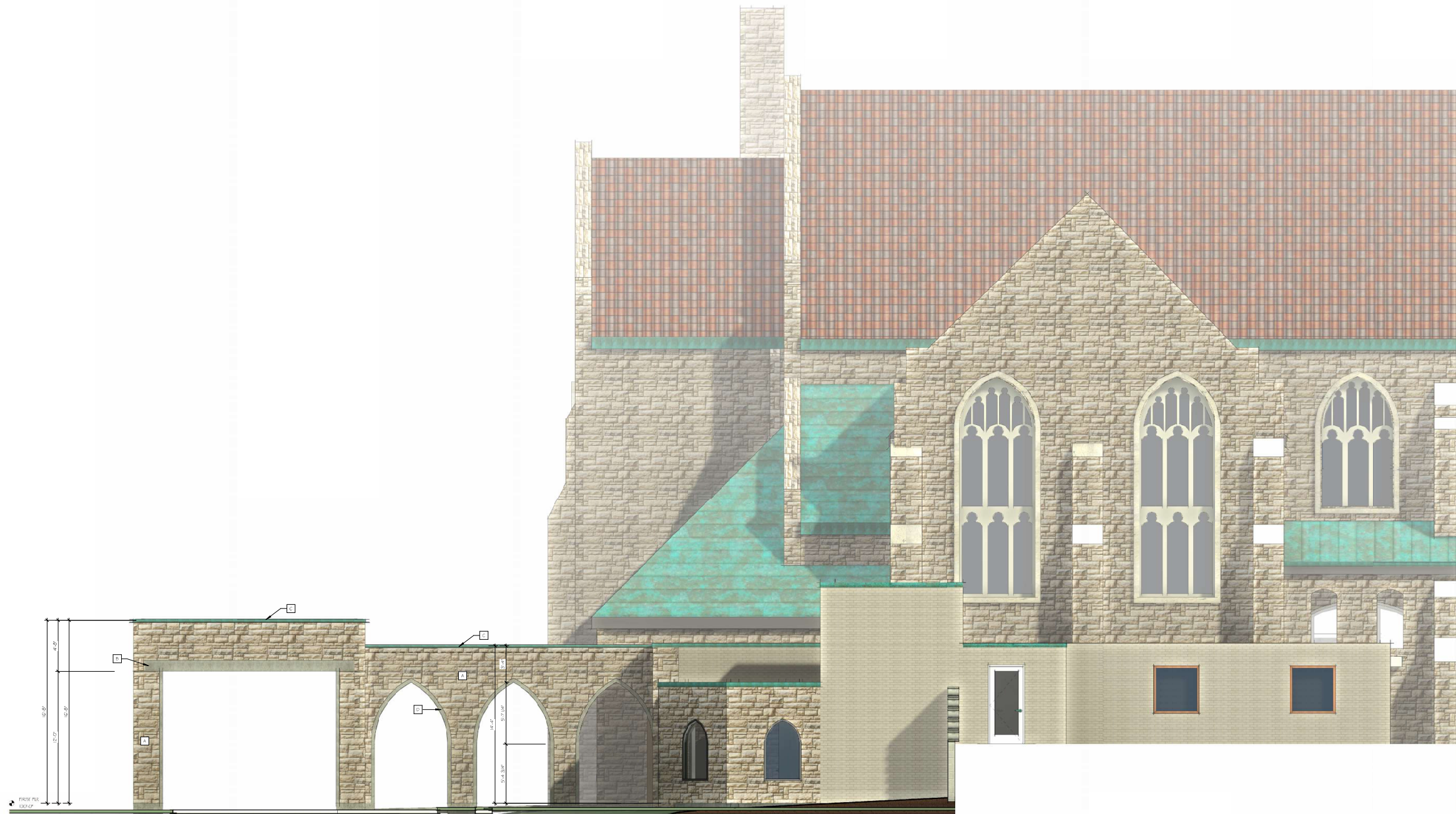
BOX	MATERIAL / MANUFACTURER	DESCRIPTION / COLOR	NOTES
A	NATURAL STONE VENEER	BUECHEL STONE CORP., JUTE CLOTH, ASHLAR	---
B	PRECAST CONC SILL	SANDSTONE (MATCH EXISTING)	---
C	METAL COPING	PAC CLAD WEATHERED COPPER (MATCH EXISTING)	---
D	ARCHED PRECAST STONE LINTEL	MATCH EXISTING (SANDSTONE)	---



STONE VENEER



COPING SYSTEM











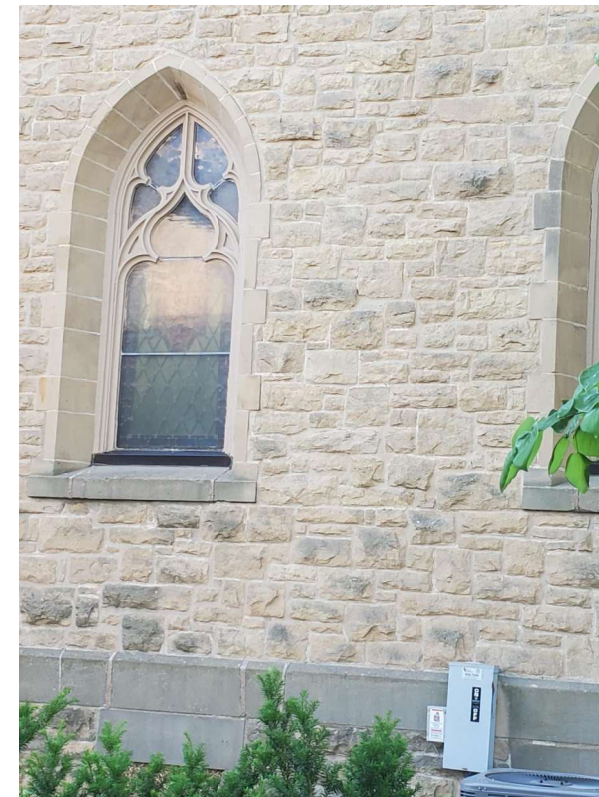
PARKING LOT ENTRANCE



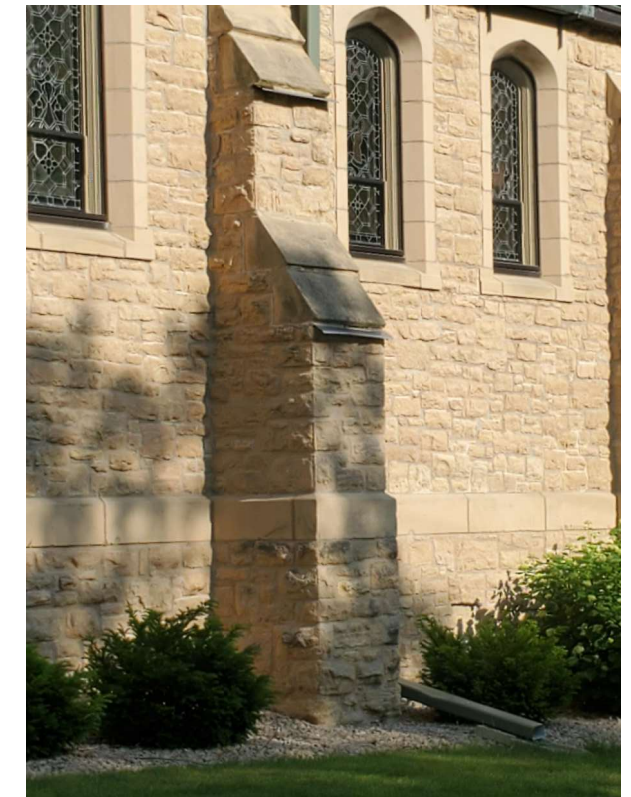
NORTH ELEVATION



EAST ELEVATION



TYPICAL POINTED ARCH



TYPICAL PIER