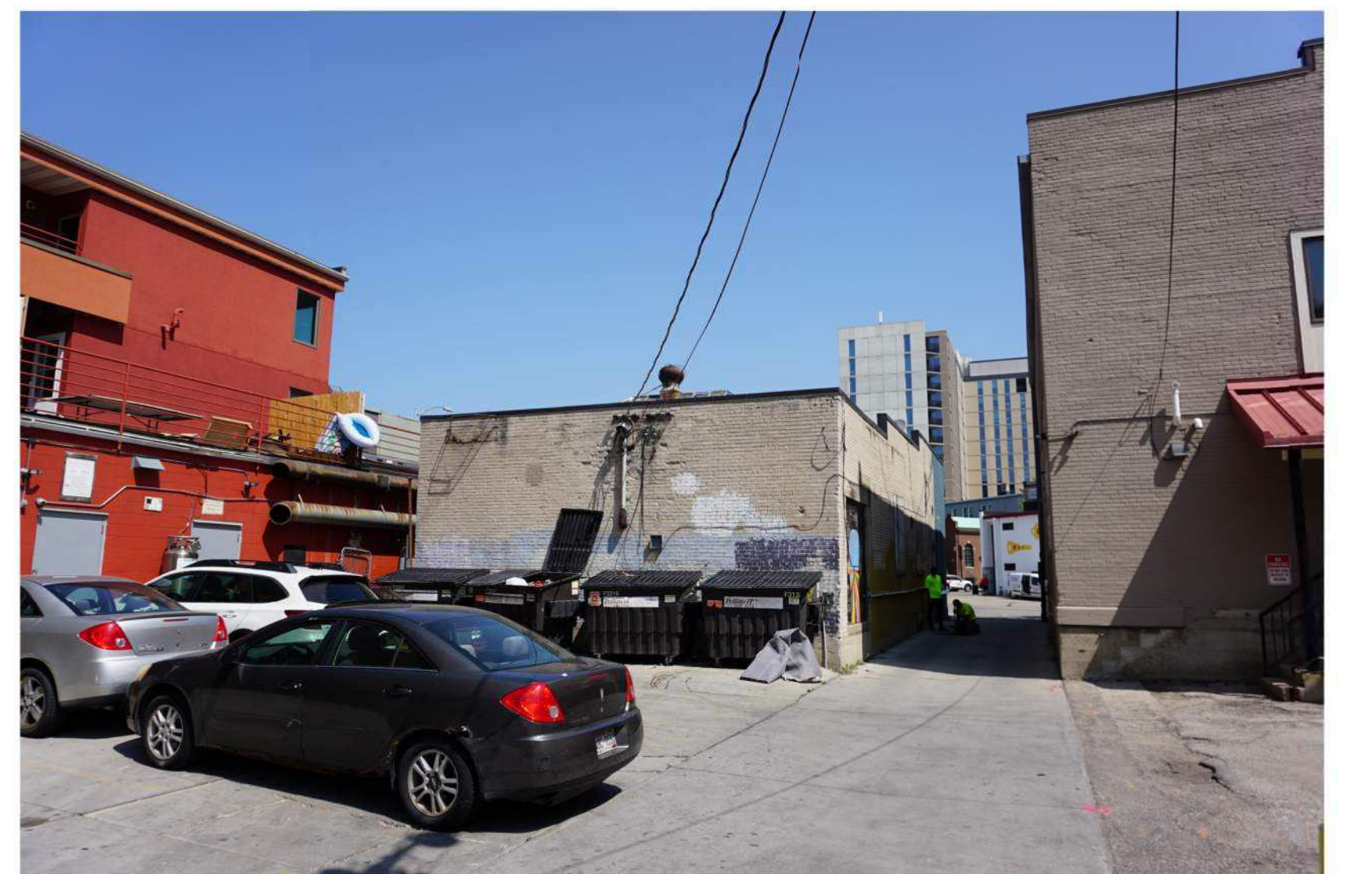
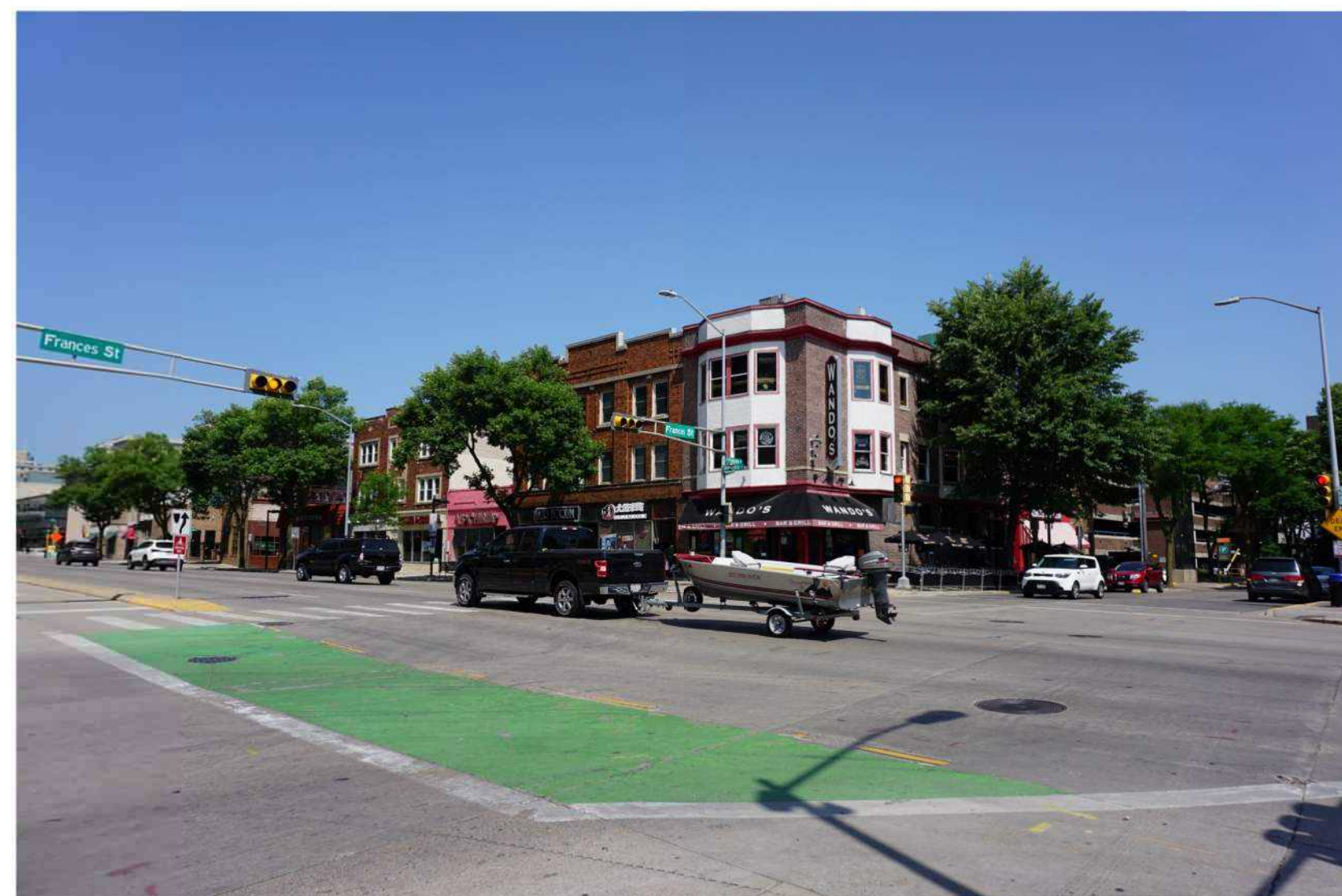
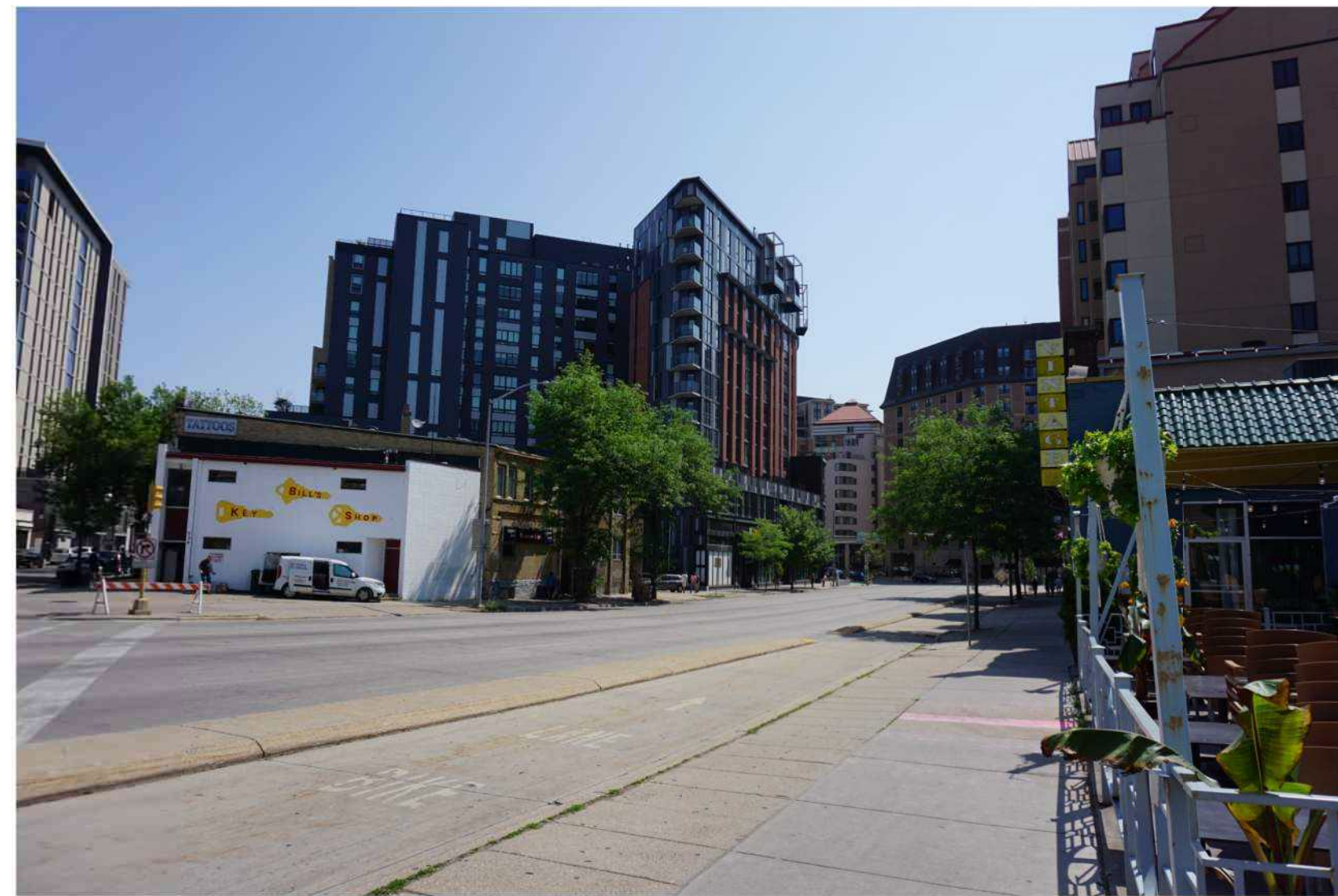
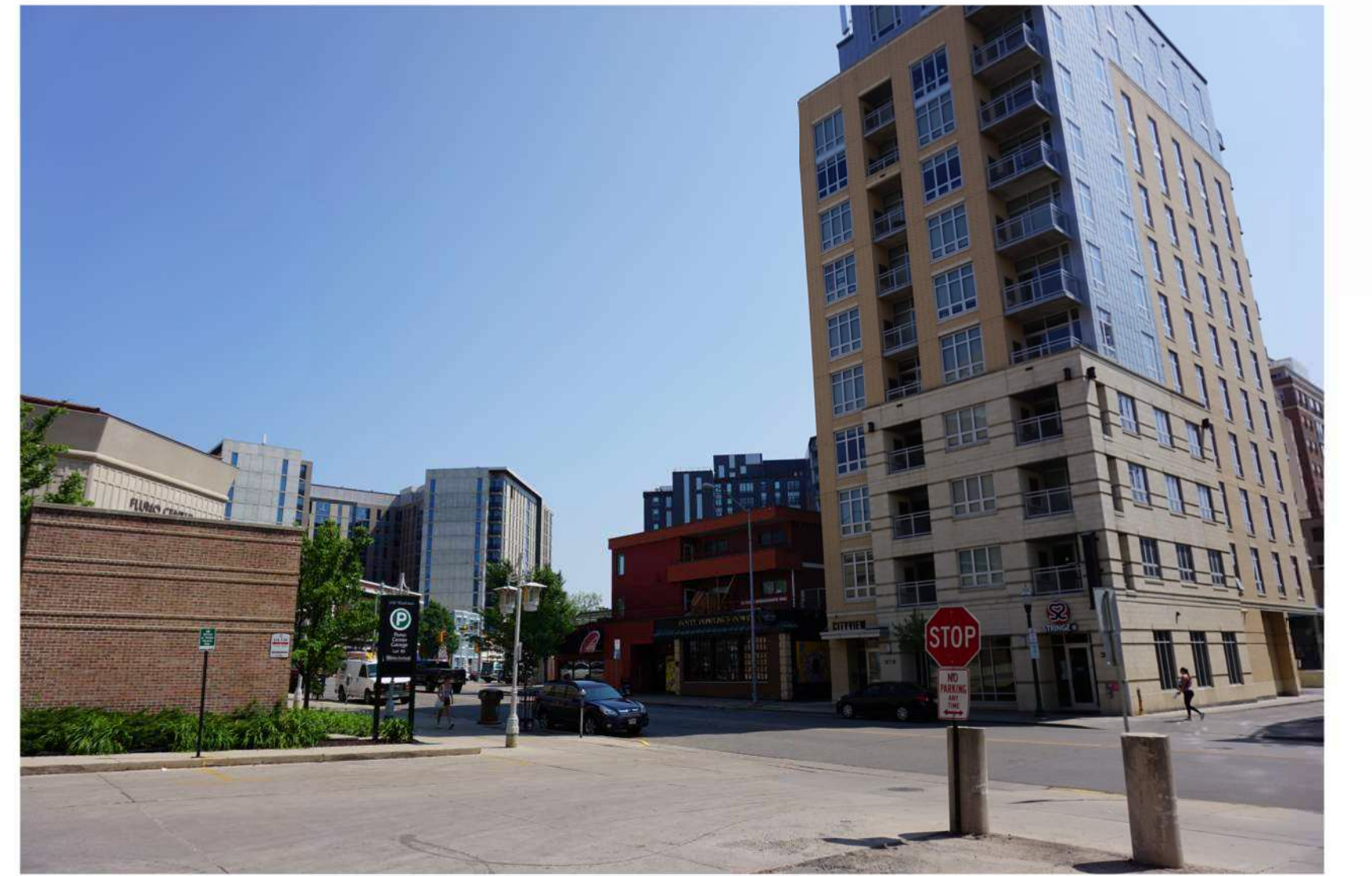




PROJECT LOCATION

**SITE LOCATOR MAP**  
1" = 1'-0"

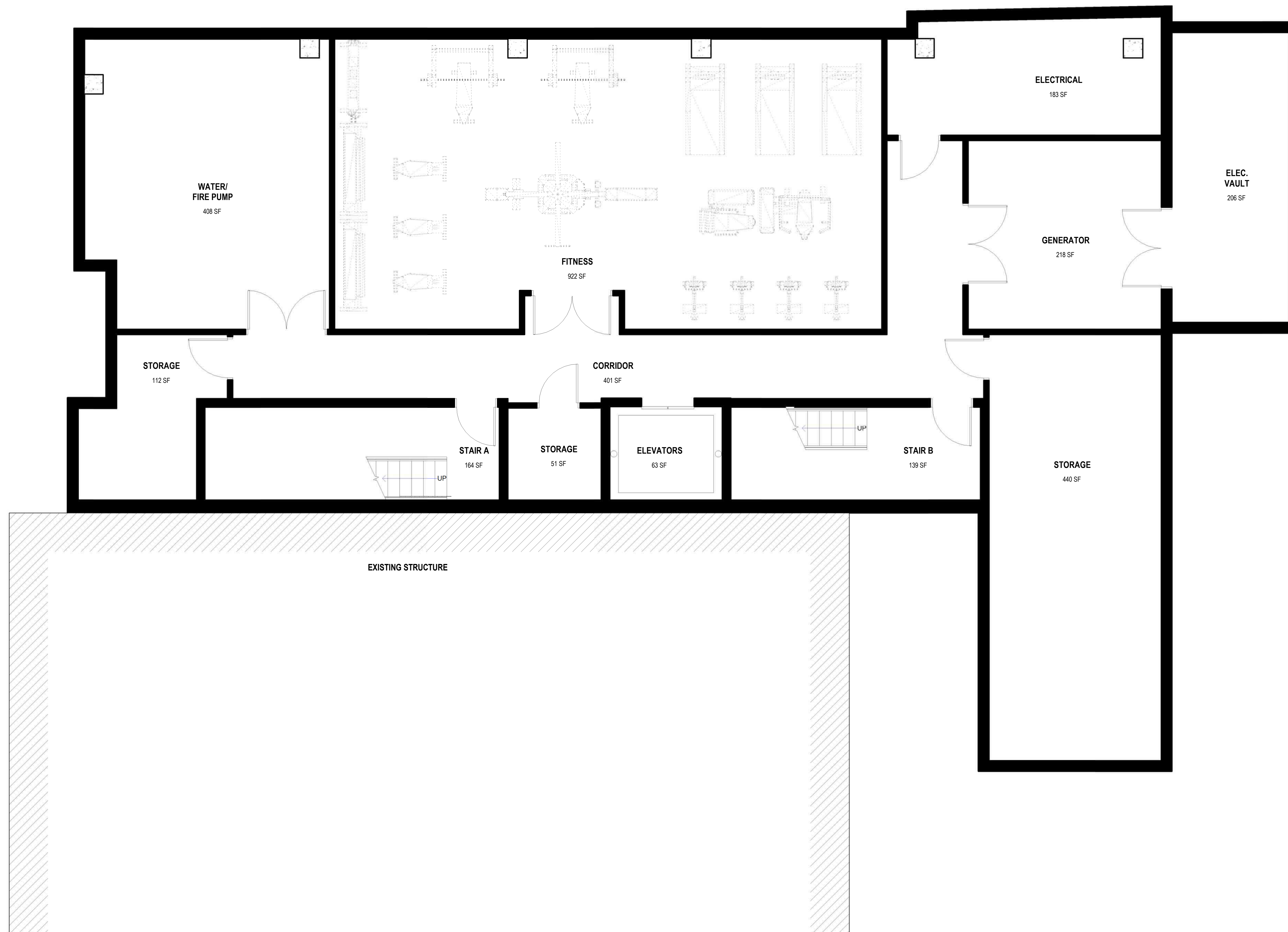


**CONTEXT PHOTOS**  
1/8" = 1'-0"

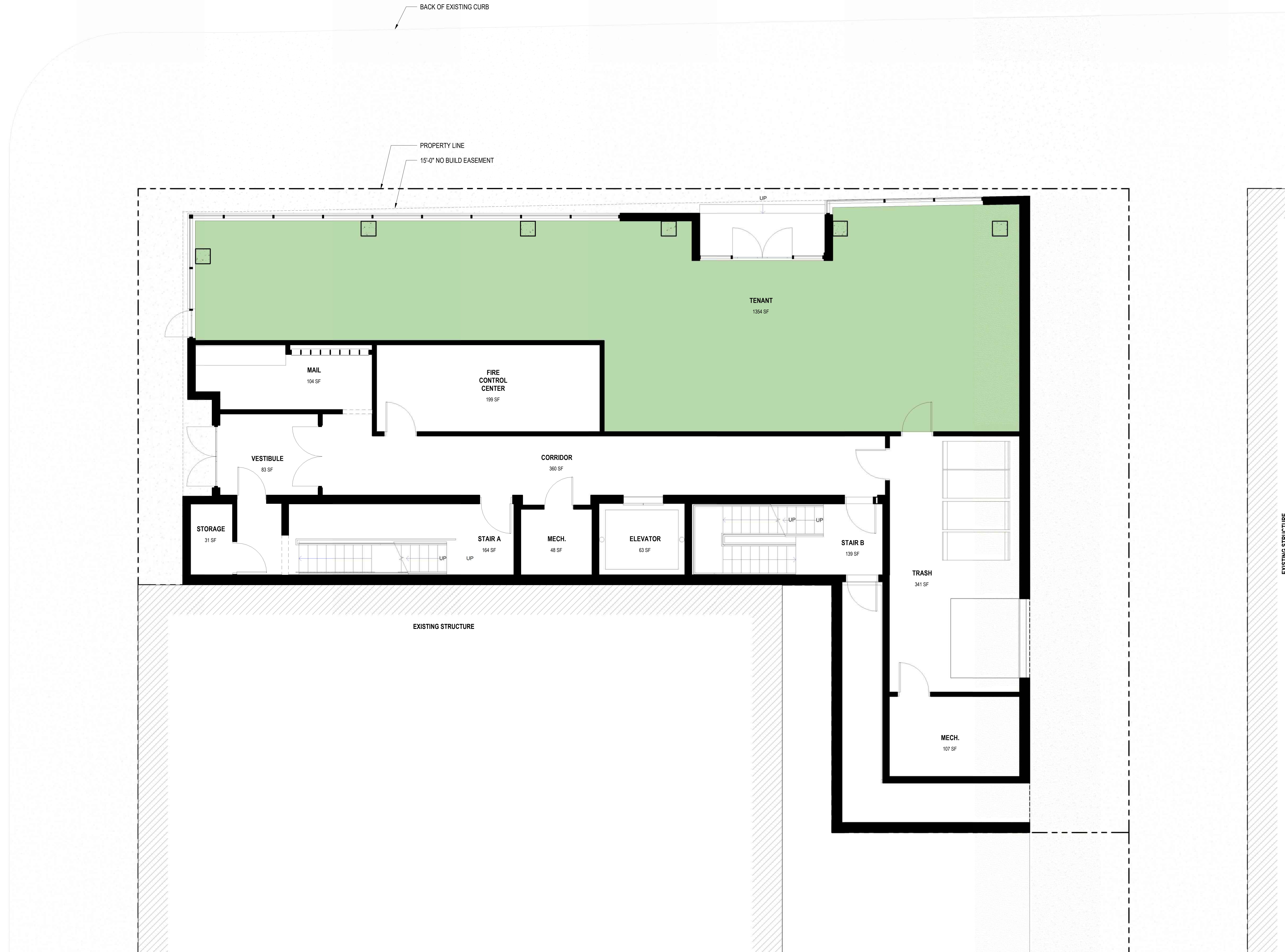












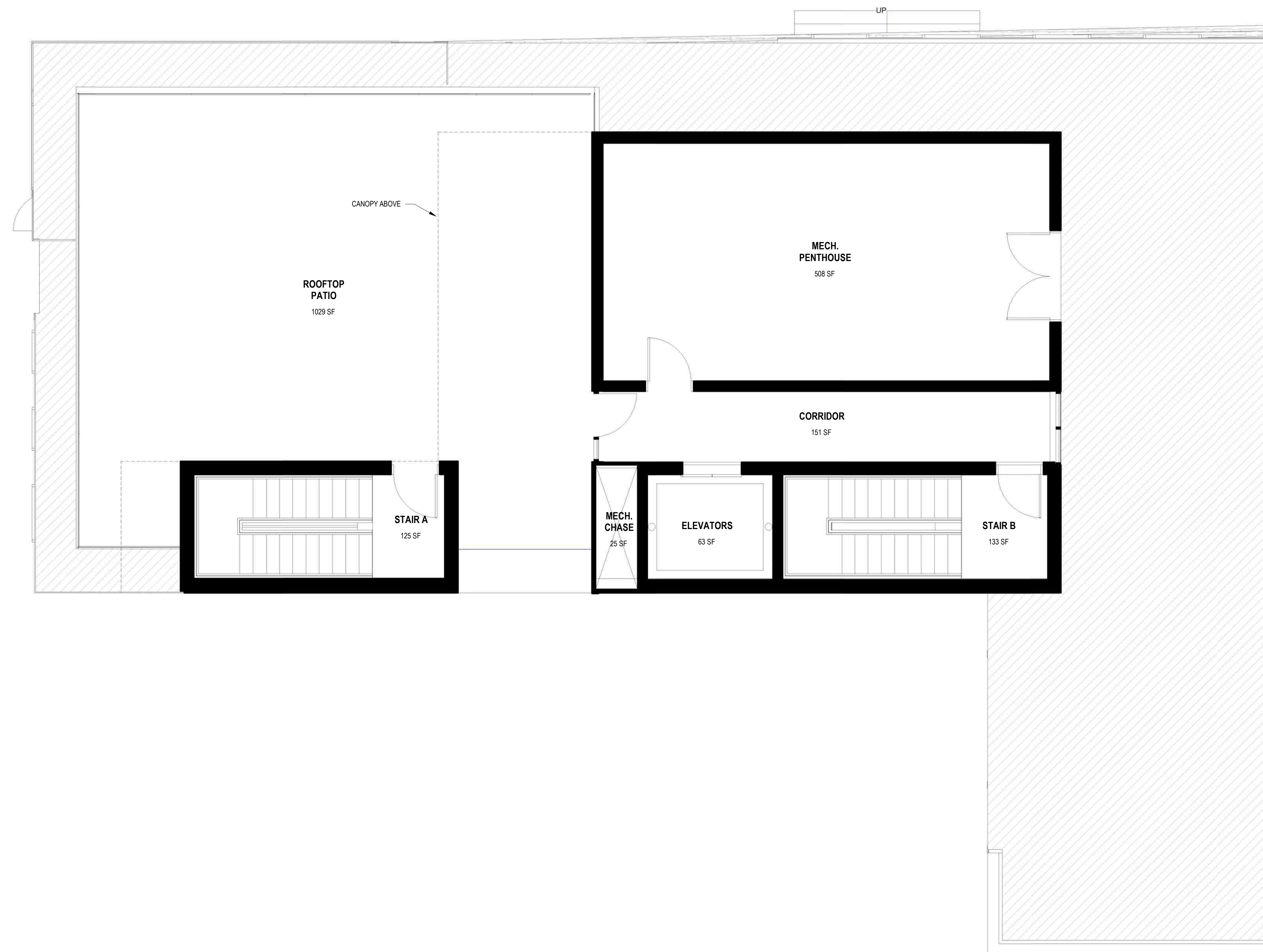




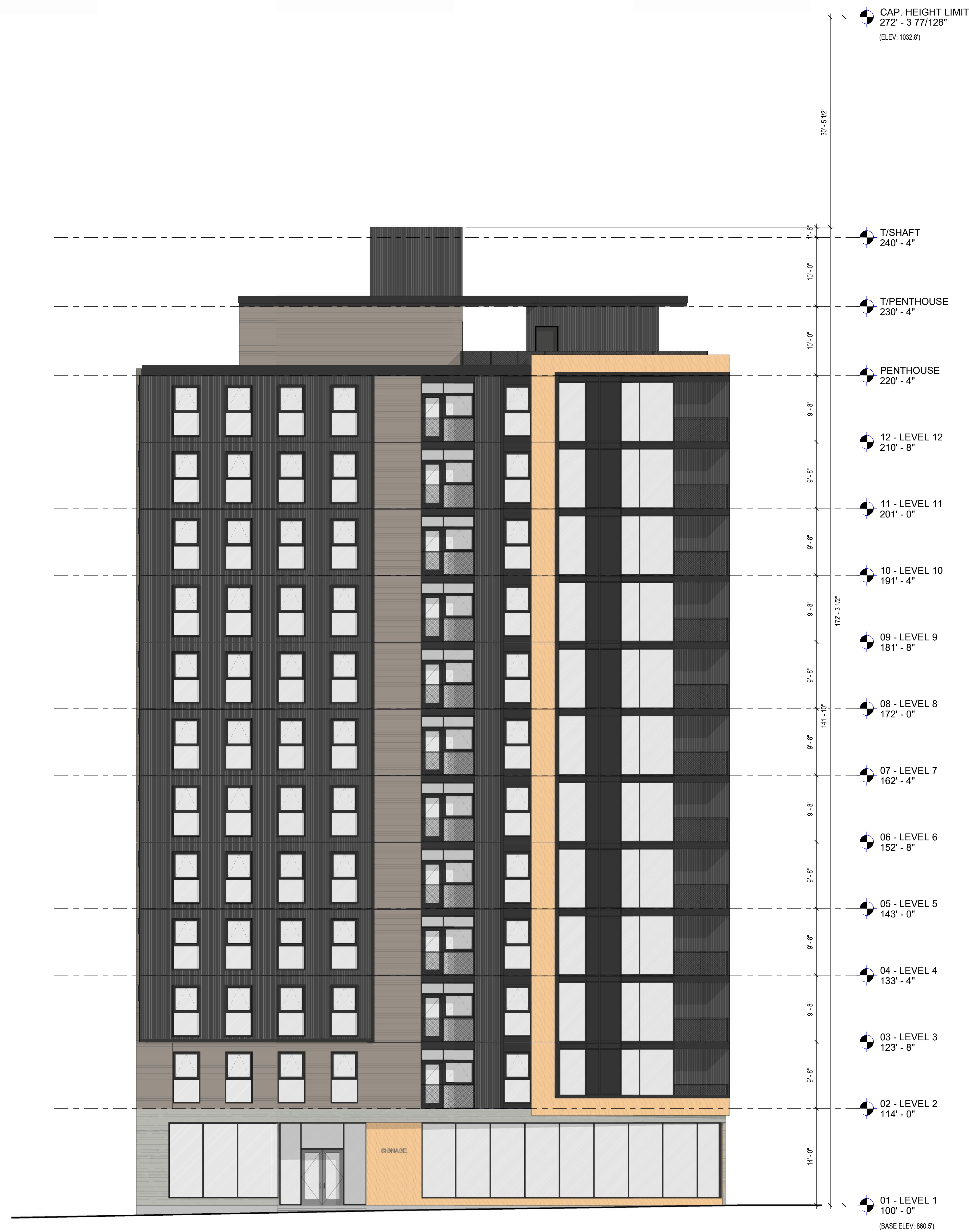




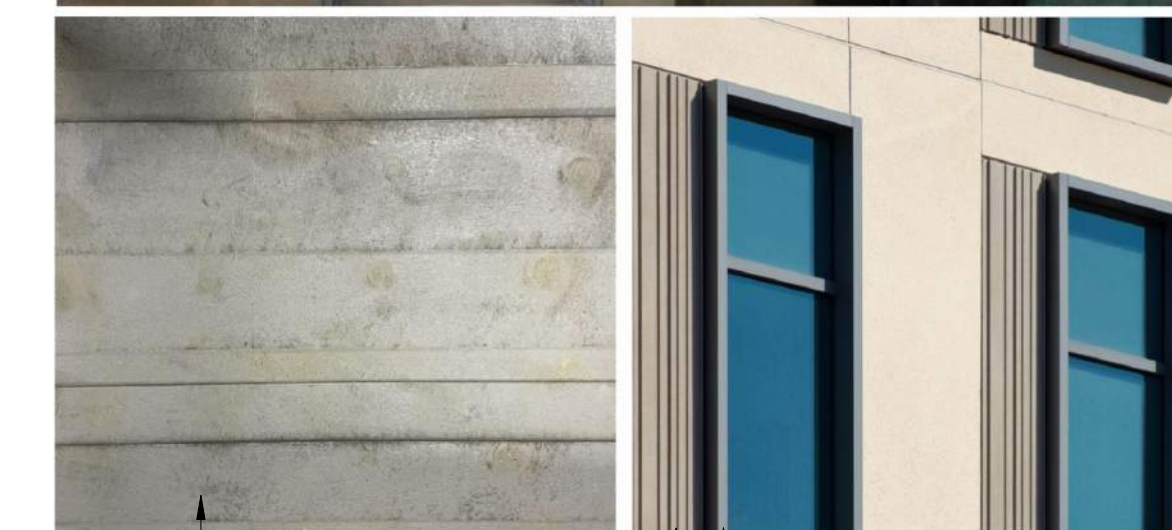
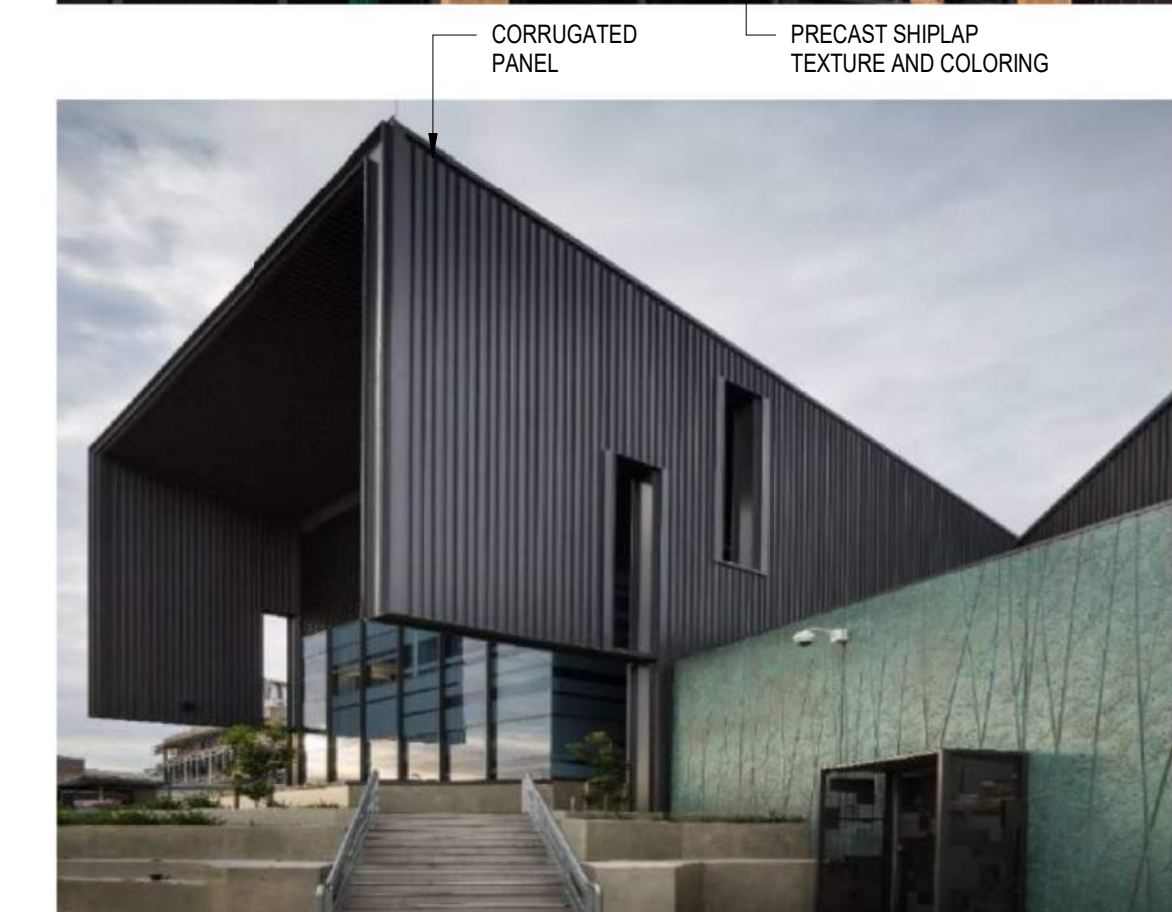
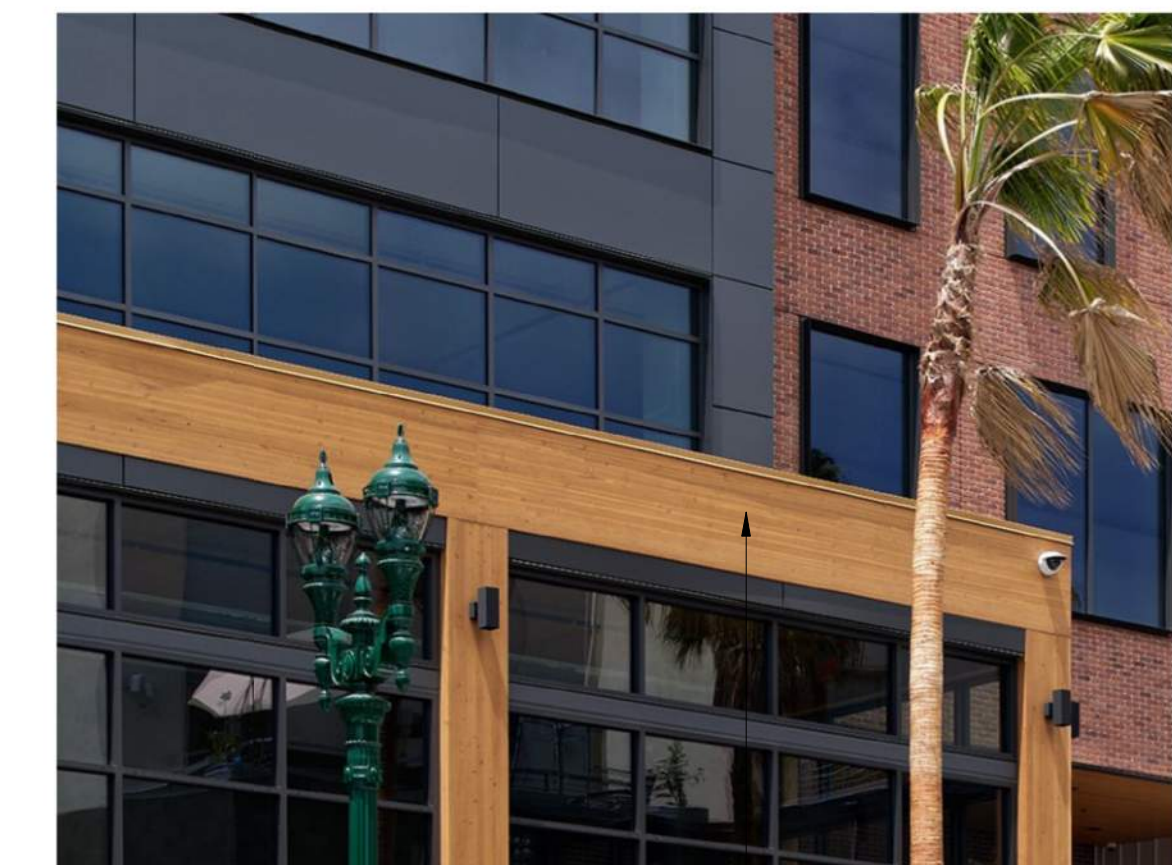








REFERENCE IMAGES FOR PATTERNS OR TEXTURES SHOWN IN PRELIMINARY LEGEND BELOW



CORRUGATED PANEL  
 PRECAST SHIPLAP TEXTURE AND COLORING  
 BOARD MARKED CONCRETE EXAMPLE  
 WINDOW FRAME EXTENSION  
 RANDOM STRIATED RIB

**EXTEIR MATERIAL LEGEND:**

- PRECAST PANEL - CORRUGATED:**  
 -INFINITE FACADE SYSTEM PANEL  
 -CORRUGATED, SINEWAVE PATTERN (4" O.C., 2" DEPTH)  
 -CHARCOAL - SEMI GLOSS
- PRECAST PANEL - RANDOM STRIATED RIB:**  
 -INFINITE FACADE SYSTEM PANEL  
 -RANDOM STRIATED REVEAL PATTERN WITHIN SMOOTH PANEL  
 -COLOR TBD - SATIN
- PRECAST PANEL - WOOD GRAIN:**  
 -INFINITE FACADE SYSTEM PANEL  
 -4" SHIPLAP, SUBTLE GRAINING  
 -STAINED TO EMULATE DOUG FIR - SEMI GLOSS
- PRECAST PANEL - BOARD MARKED CONCRETE:**  
 -INFINITE FACADE SYSTEM PANEL  
 -RANDOM WIDTH BOARD MARKED CONCRETE PATTERN  
 -SEALED (CLEAR) - MATTE

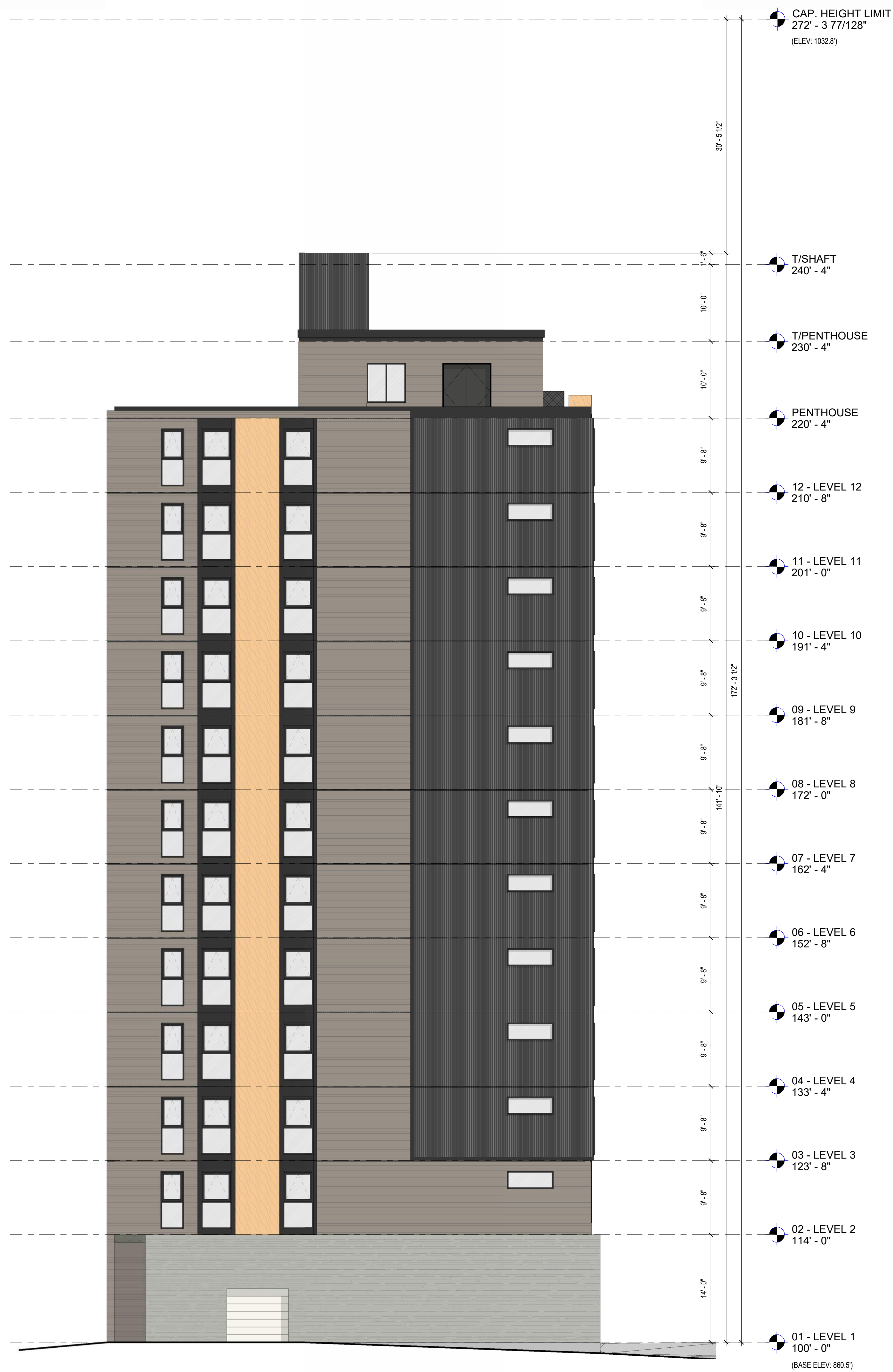
**GENERAL NOTES:**

1. ALL GLAZING TO RECEIVE ANODIZED ALUMINUM FRAMES AND MULLIONS - BLACK
2. ALL BALCONY RAILINGS TO RECEIVE WELDER WIRE MESH WITHIN CUSTOM SQUARE TUBE STEEL FRAME
3. PREFINISHED METAL CLOSURE SOFFIT PANEL AT UNDERSIDE AND PERIMETER OF BALCONIES - BLACK

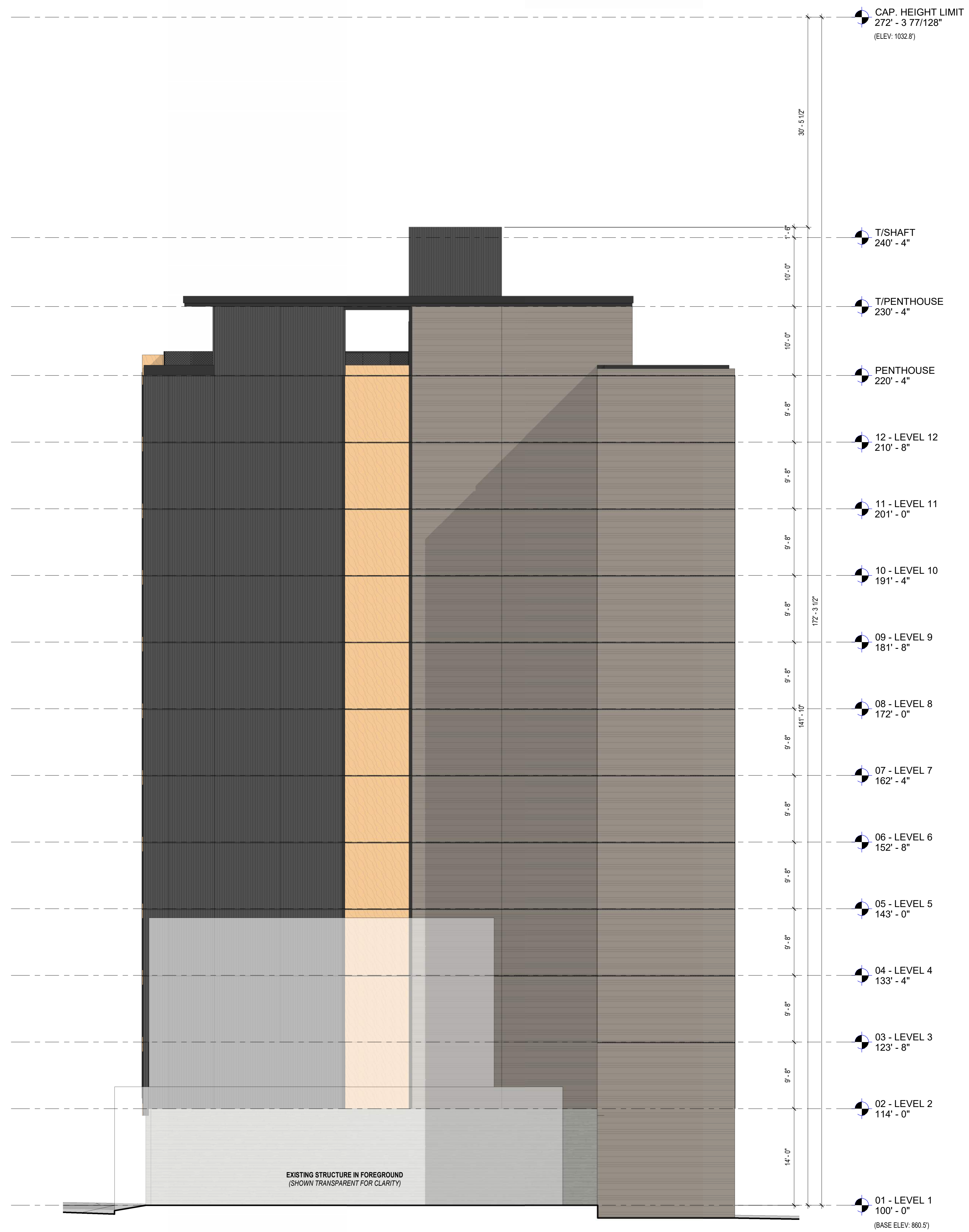
**2** PRELIMINARY EXTERIOR ELEVATION - NORTH  
 Z301 1/8" = 1'-0"

**1** PRELIMINARY EXTERIOR ELEVATION - WEST  
 Z301 1/8" = 1'-0"



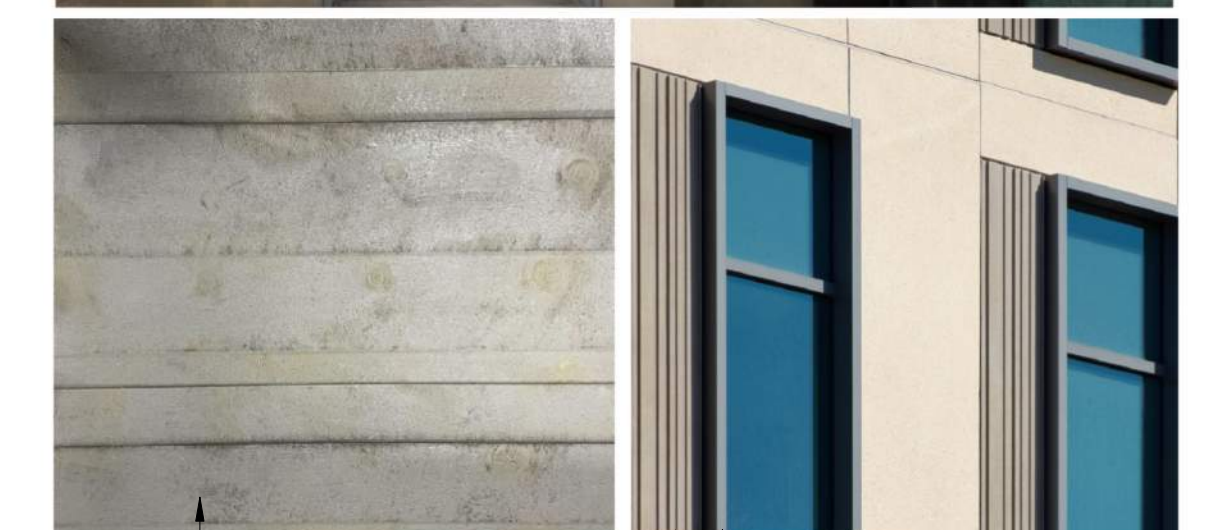
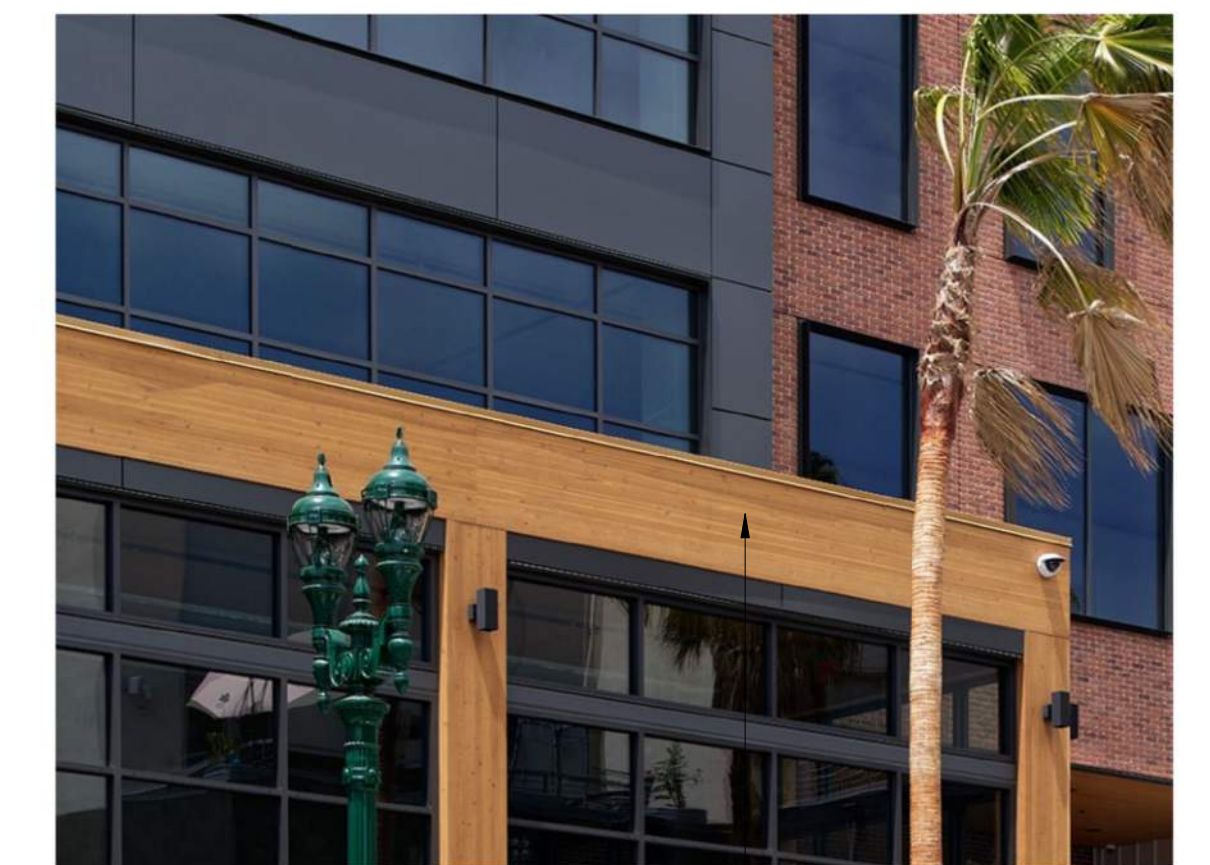


2 PRELIMINARY EXTERIOR ELEVATION - EAST  
Z302 1/8" = 1'-0"



1 PRELIMINARY EXTERIOR ELEVATION - SOUTH  
Z302 1/8" = 1'-0"

REFERENCE IMAGES FOR PATTERNS OR TEXTURES SHOWN IN PRELIMINARY LEGEND BELOW



**EXTERIOR MATERIAL LEGEND:**

- PRECAST PANEL - CORRUGATED:**  
-INFINITE FACADE SYSTEM PANEL  
-CORRUGATED, SINEWAVE PATTERN (4" O.C., 2" DEPTH)  
-CHARCOAL - SEMI GLOSS
- PRECAST PANEL - RANDOM STRIATED RIB:**  
-INFINITE FACADE SYSTEM PANEL  
-RANDOM STRIATED REVEAL PATTERN WITHIN SMOOTH PANEL  
-COLOR TBD - SATIN
- PRECAST PANEL - WOOD GRAIN:**  
-INFINITE FACADE SYSTEM PANEL  
-SHIPLAP, SUBTLE GRAINING  
-STAINED TO EMULATE DOUG FIR - SEMI GLOSS
- PRECAST PANEL - BOARD MARKED CONCRETE:**  
-INFINITE FACADE SYSTEM PANEL  
-RANDOM WIDTH BOARD MARKED CONCRETE PATTERN  
-SEALED (CLEAR) - MATTE

**GENERAL NOTES:**

1. ALL GLAZING TO RECEIVE ANODIZED ALUMINUM FRAMES AND MULLIONS - BLACK
2. ALL BALCONY RAILINGS TO RECEIVE WELDER WIRE MESH WITHIN CUSTOM SQUARE TUBE STEEL FRAME
3. PREFINISHED METAL CLOSURE SOFFIT PANEL AT UNDERSIDE AND PERIMETER OF BALCONIES - BLACK





STUDENT APARTMENTS  
529 UNIVERSITY AVE.  
MADISON, WI

06.26.23 | Z310

PRELIMINARY EXTERIOR IMAGERY









