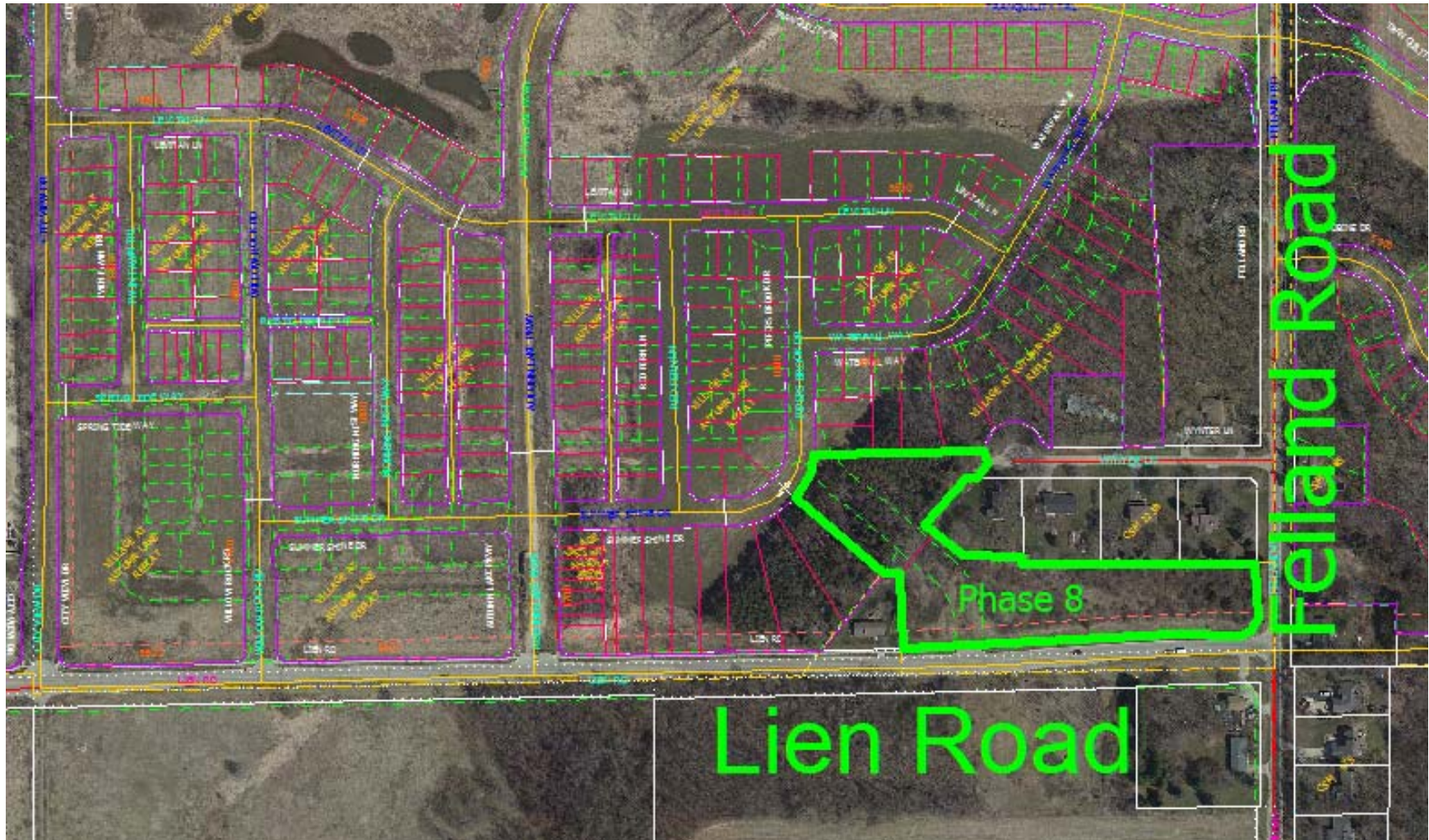
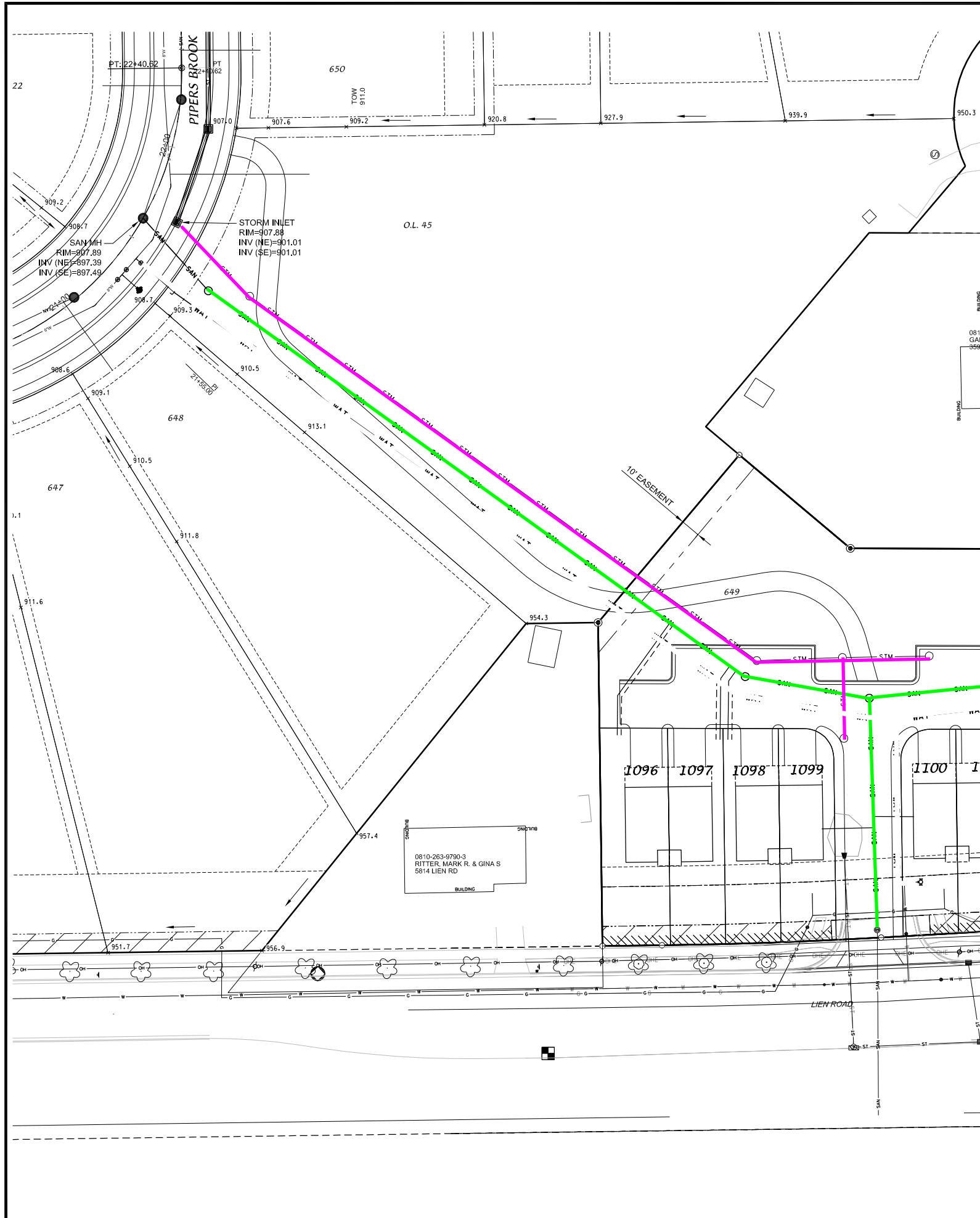


Village at Autumn Lake – Phase 8, Project Location

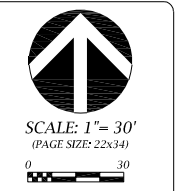




VILLAGE AT AUTUMN LAKE
 PHASE 8
 Proposed storm sewer —————
 Proposed sanitary sewer —————

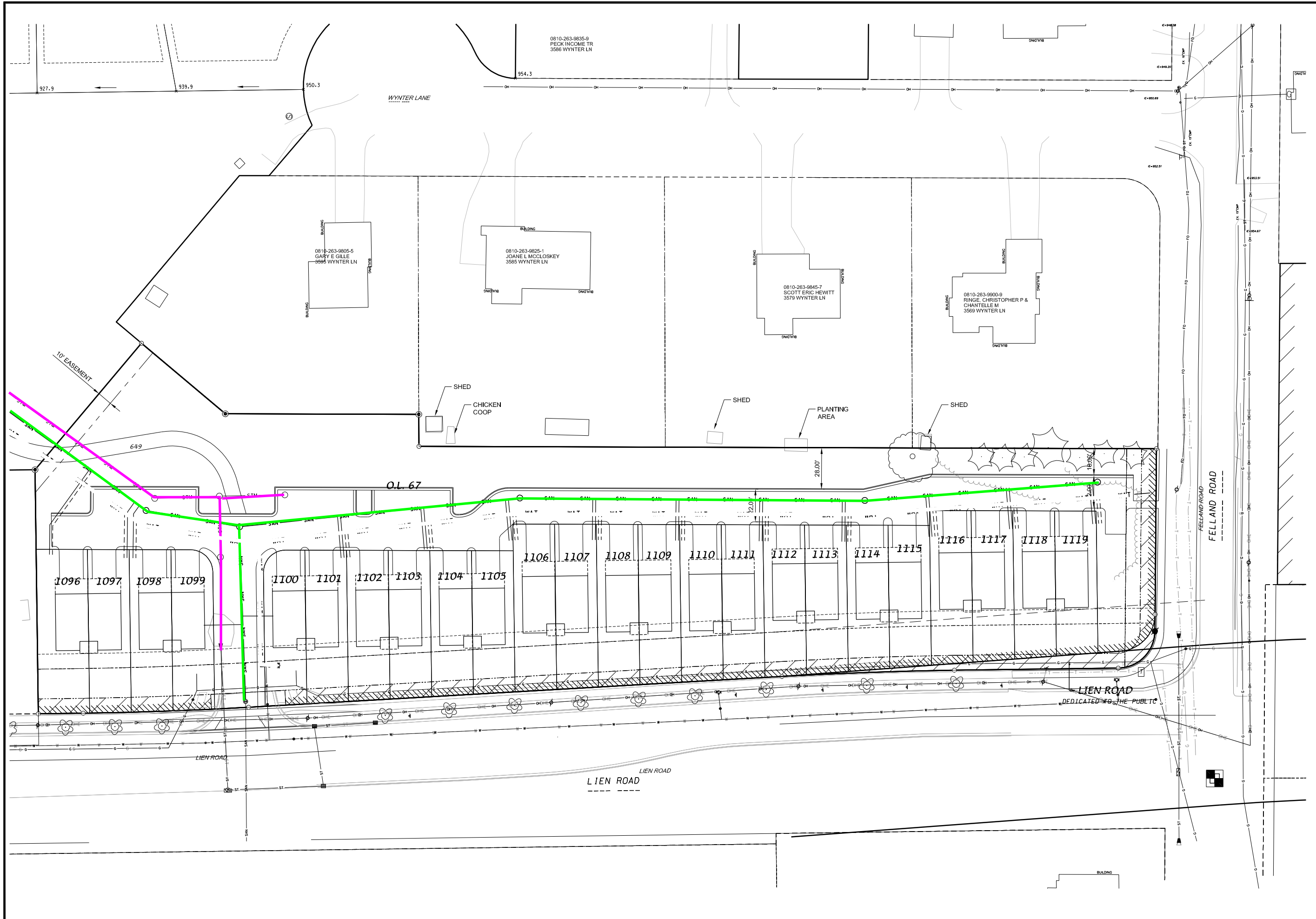
D'ONOFRIO KOTTKE AND ASSOCIATES, INC.
 7530 Westward Way, Madison, WI 53717
 Phone: 608.833.7530 • Fax: 608.833.1089
 YOUR NATURAL RESOURCE FOR LAND DEVELOPMENT

UTILITY PLAN - O.L. 45
VILLAGE AT AUTUMN LAKE
 CITY OF MADISON, DANE COUNTY, WISCONSIN



DATE: 07-06-18
 REVISED:

 DRAWN BY: JMS
 FN: 18-05-121
 Sheet Number:
 1 of 2



D'ONOFRIO KOTTKE AND ASSOCIATES, INC.
 7530 Westward Way, Madison, WI 53717
 Phone: 608.833.7530 • Fax: 608.833.1089
 YOUR NATURAL RESOURCE FOR LAND DEVELOPMENT

VILLAGE AT AUTUMN LAKE

UTILITY PLAN - LOT 649

CITY OF MADISON, DANE COUNTY, WISCONSIN



SCALE: 1" = 30'
 (PAGE SIZE: 22x34)

DATE: 07-06-18
 REVISED:

DRAWN BY: JMS

FN: 18-05-121

Sheet Number:
 2 of 2