



# Public Health Madison & Dane County

4 Divisions • 139 FTE

Working with the community to enhance, protect, and promote the health of the environment and the well-being of all people.



## Community Health Division

65 LTE

To enhance the health and safety of the families in our community, this Division monitors and works to reduce rates of communicable diseases, provides healthcare services to uninsured/underinsured residents, and supports healthy birth outcomes through home visiting and nutrition assistance programs.

75% (49)

of Community Health FTE are dedicated to local and state mandated services; the remaining 16 staff work in the WIC grant program.

### Some Position Titles Are:

- Dietetic Specialist
- Epidemiologist
- Disease Intervention Specialist
- Public Health Nurse
- Public Health Specialist



## Policy, Planning & Evaluation Division

17 FTE

To improve community health and address health inequities, this division collaborates internally, with community partners, and with decision makers to provide information, evaluation, and technical assistance. Some of the ways we do this is through: providing data analysis, supporting program planning and community engagement, and facilitating program evaluation.

94% (16)

of Policy, Planning & Evaluation FTE are dedicated to mandated services.

### Some Position Titles Are:

- Public Health Planner
- Epidemiologist
- Evaluator
- Data Analyst
- Public Health Specialist



## Environmental Health Division

33 FTE

This Division monitors and regulates the surroundings in which people live, learn, work, and play in order to prevent injuries or illnesses from occurring. This includes issuing permits and inspecting businesses, monitoring environmental conditions, and decreasing the number of hazards to which the public are exposed.

88% (29)

of Environmental Health FTE are dedicated to local and state mandated services; the remaining 4 staff work in the public health laboratory.

### Some Position Titles Are:

- Animal Service Officer
- Public Health Sanitarian
- Chemical Analyst
- Environmental Health Technician
- Environmental Protection Leadworker



## Operations Division

24 FTE



This Division is responsible for supporting the department so we can achieve our vision of *Healthy People. Healthy Places.* Positions titles include: Grants and Billing Specialist, Health Equity Coordinator, Administrative Assistant, Health Education Coordinator, and Performance Management Coordinator.

# SERVICES AND PROGRAMS

## Community Health

### Acute Communicable Disease Monitoring & Follow-Up

Track, investigate, and work to prevent and control the spread of infectious or contagious diseases and conditions.

### Breast & Cervical Cancer Screening

Coordinates The Wisconsin Well Woman Program, offering free breast and cervical cancer screenings for people with limited income and little or no health insurance.

### Childhood Lead Poisoning Prevention

Seeks to prevent lead poisoning in children through public education and case management for those at risk.

### Fetal Infant Mortality Review

Investigates fetal and infant deaths to identify interventions to rectify social problems and health care systems issues.

### Immunization Services

Provides education and free immunizations to reduce the spread of disease in our community.

### Needle Exchange

Provides free needles and risk reduction information to reduce the spread of disease, and accepts used needles for disposal.

### Pregnancy Support Services

Provides care management services for high risk women during pregnancy and for two months to 2 years after delivery through Public Health Nurse home visits.

### Sexual Health Services

Provides sexually transmitted infections screening, treatment, and partner notification services.

### Tuberculosis (TB) Control Services

Control and prevent the spread of TB through treatment, case management and contact investigations.

### WIC

Provides nutrition counseling, breastfeeding support, nutritious foods, and referrals to community programs for pregnant women, New moms, infants, and children up to their 5th birthday.

## Environmental Health

### Animal Control Services

Insures a safe and healthy environment between humans and animals in Dane County by responding to animal safety issues.

### Environmental Health Protection & Monitoring

Investigates and follow-ups on spills and citizen complaints that may affect our environment. Monitors water and air quality and other environmental factors that impact our community.

### Environmental Licensing & Inspection

Licenses and inspects food establishments, lodging facilities, body art, and swimming pools to reduce the occurrence of illness.

### Laboratory Services

Provides water testing for nutrients, metals and bacteria, and paint testing for lead.

### Mosquito Monitoring & Control

Monitors and controls mosquito breeding areas to reduce mosquitoes that carry diseases that can make people sick.

### Well & Septic System Permitting and Monitoring

Permits and inspects private onsite wastewater systems and wells to protect county groundwater resources from contamination.

## Policy Planning & Evaluation

### Epidemiology & Data Analysis

Collects, organizes, analyzes and communicates health-related data; tracks health trends to prevent diseases and improve health; and conducts surveillance for various health-related factors.

### Health Assessments & Health Improvement Planning

Coordinates Community Health Assessment (CHA) and Community Health Improvement Plan (CHIP) processes. Works to convene stakeholders, catalyze action, and act as a partner for community initiatives to improve well-being, particularly among groups most affected by negative health outcomes.

### Health Policy

Tracks, analyzes and develops policy to work with partners to pursue a Health in All Policies approach within the City and County.

### Healthy Community Initiatives

Develops and promotes evidence-based strategies and sustainable prevention initiatives in various focus areas, including: reducing food insecurity, tobacco prevention & control, increasing breastfeeding rates, increasing preventative oral health care, reducing drug use, and reducing obesity.

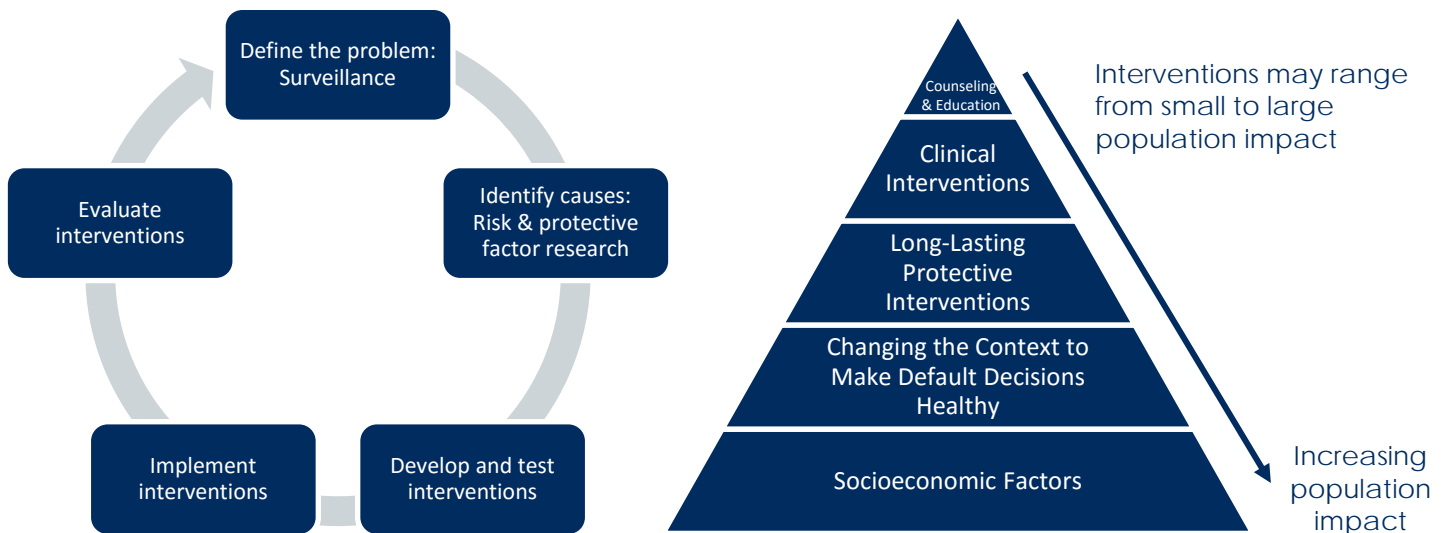
### Program Development & Evaluation

Provides technical assistance in program development and evaluation, ensuring that public projects identify appropriate goals, clear criteria for success and metrics to track results.

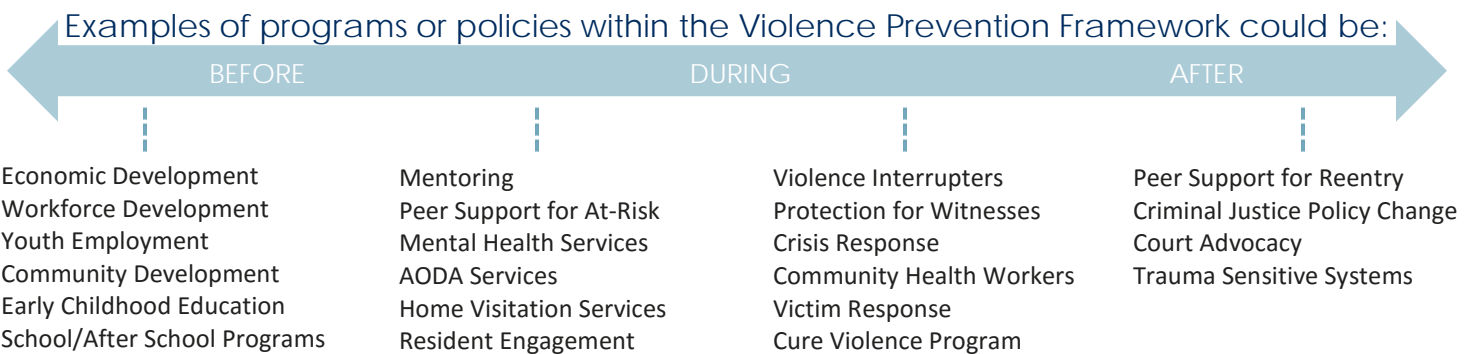
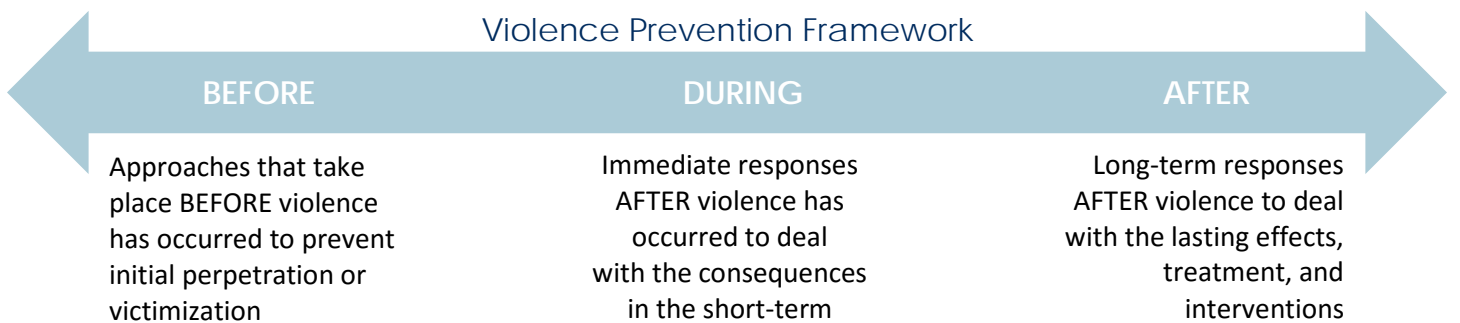
# How Public Health is Approaching Violence & Injury Prevention



## Utilize a Public Health Approach to Prevention



## Apply the Public Health Approach to a Framework that Places Violence Prevention on a Continuum

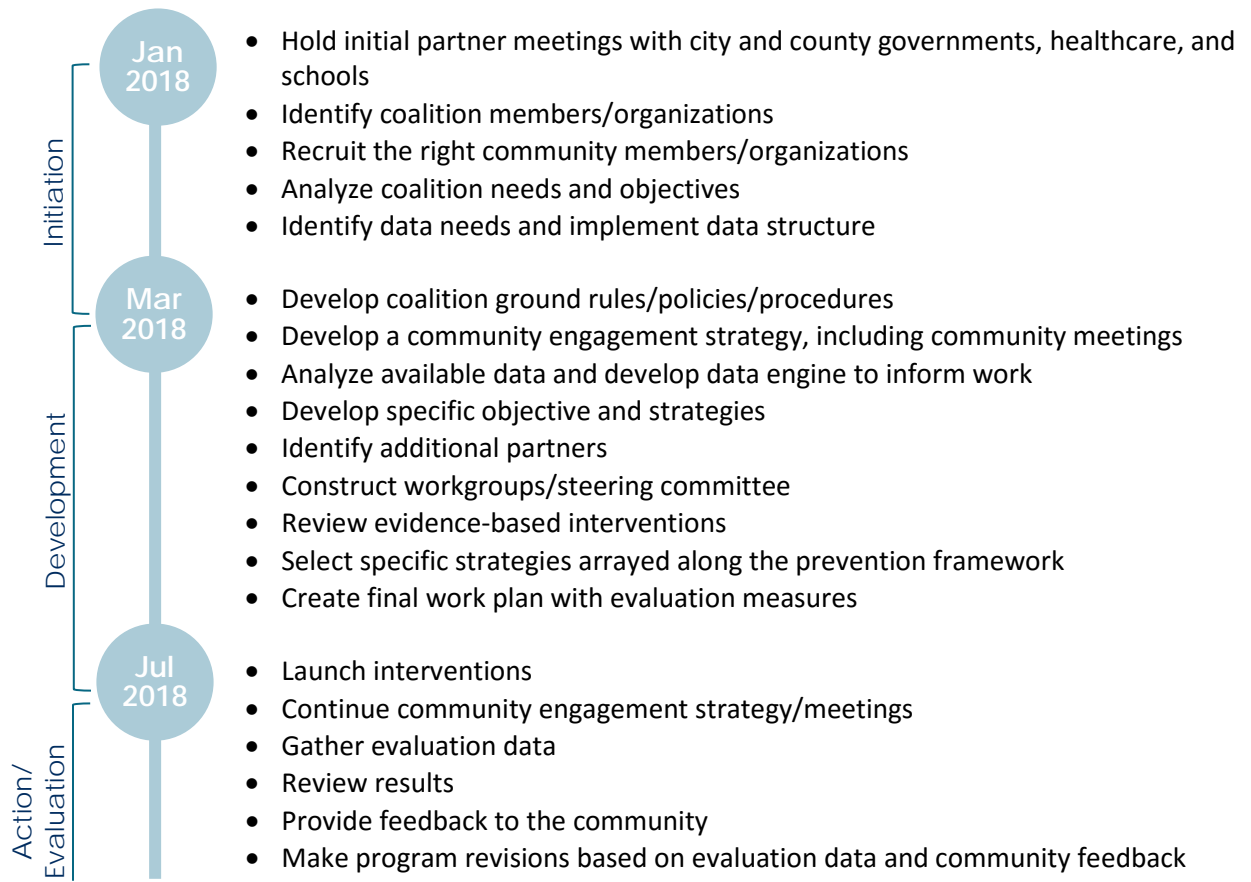


# HOW THE WORK WILL HAPPEN



## Create and Facilitate a Violence Prevention Coalition, Informed by Community Voices, Data, & Best Practices

This process will identify the strategies that will work best in our community to decrease violence and injury prevention.



## Current Community Connections Position Public Health Madison & Dane County Well for this Work

The following are some of the partnerships we have in place:

- Nehemiah Center for Urban Leadership Development
- Rebalanced Life Wellness Association
- Black Women's Wellness
- African American Opioid Coalition
- African American Health Network
- United Way of Dane County
- Healthcare Organizations & Emergency Departments/Urgent Care
- Madison Metropolitan School District
- Madison Addiction Recovery Initiative
- Safe Communities of Madison-Dane County
- Madison Fire & Police Departments
- Safe Kids Madison Area Coalition
- Dane County Human Services
- Dane County Sherriff
- Dane County EMS
- Centro Hispano