

EXTERIOR MATERIAL SCHEDULE			
MARK	BUILDING ELEMENT	MANUFACTURER	COLOR
	EXTERIOR SIGNAGE LIGHT FIXTURE	BARN LIGHT ELECTRIC CO.	BLACK
1	COMPOSITE LAP SIDING 6" - SMOOTH	JAMES HARDIE	IRON GRAY
2	COMPOSITE TRIM	JAMES HARDIE	ARCTIC WHITE
3	COMPOSITE PANEL - SMOOTH	JAMES HARDIE	PEARL GRAY
4	METAL PANEL	CMG	SILVER
5	COMPOSITE PANEL - SMOOTH	JAMES HARDIE	GREEN
6.1	BRICK VENEER	INTERSTATE BRICK	CHIPPEWA
6.2	BRICK VENEER	INTERSTATE BRICK	OCHRE BUFF
6.3	BRICK VENEER	INTERSTATE BRICK	PLATINUM
7.1	BRICK VENEER - SOLDIER		
7.2	BRICK VENEER - ROWLOCK		
7.3	BRICK VENEER - ANGLED		
8	CAST STONE		
9	RAILINGS	TBD	BLACK
10	COMPOSITE WINDOWS	ANDERSEN	BLACK
11	ALUMINIUM STOREFRONT		BLACK
13	FABRIC AWNING		



GOOSENECK LAMPS LOCATED AT COMMERCIAL STOREFRONTS (TYP).

RECESSED CAN LIGHTS OVER BACK/SIDE ENTRANCE

ISSUED
ISSUED FOR LANDMARKS - JANUARY 13, 2023
ISSUED FOR LUA - MARCH 27, 2023
ISSUED FOR ADDRESSING - MAY 30, 2023

1 ELEVATION - SOUTH WEST COLOR
1/8" = 1'-0"

WALL SCOSCE AT WALK-UP UNIT ENTRANCES (TYP.)

GOOSENECK LAMPS LOCATED AT COMMERCIAL STOREFRONTS (TYP.)

RECESSED CAN LIGHTS OVER MAIN APARTMENT ENTRANCE



PROJECT TITLE
Threshold Development
Struck & Irwin Site

838 Williamson St.
Madison, WI

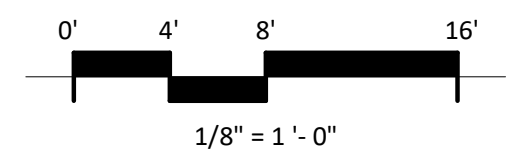
SHEET TITLE
EXTERIOR ELEVATIONS COLOR

SHEET NUMBER

X203

PROJECT NUMBER 2241

© Knothe & Bruce Architects, LLC



EXTERIOR MATERIAL SCHEDULE			
MARK	BUILDING ELEMENT	MANUFACTURER	COLOR
	EXTERIOR SIGNAGE LIGHT FIXTURE	BARN LIGHT ELECTRIC CO.	BLACK
1	COMPOSITE LAP SIDING 6" - SMOOTH	JAMES HARDIE	IRON GRAY
2	COMPOSITE TRIM	JAMES HARDIE	ARCTIC WHITE
3	COMPOSITE PANEL - SMOOTH	JAMES HARDIE	PEARL GRAY
4	METAL PANEL	CMG	SILVER
5	COMPOSITE PANEL - SMOOTH	JAMES HARDIE	GREEN
6.1	BRICK VENEER	INTERSTATE BRICK	CHIPPEWA
6.2	BRICK VENEER	INTERSTATE BRICK	OCHRE BUFF
6.3	BRICK VENEER	INTERSTATE BRICK	PLATINUM
7.1	BRICK VENEER - SOLDIER		
7.2	BRICK VENEER - ROWLOCK		
7.3	BRICK VENEER - ANGLED		
8	CAST STONE		
9	RAILINGS	TBD	BLACK
10	COMPOSITE WINDOWS	ANDERSEN	BLACK
11	ALUMINIUM STOREFRONT		BLACK
13	FABRIC AWNING		



1 ELEVATION - NORTH EAST COLOR
1/8" = 1'-0"

SMOOTH SIDING AT ALL FIBER CEMENT MATERIAL LOCATIONS (PANEL OR LAP SIDING) TYP.



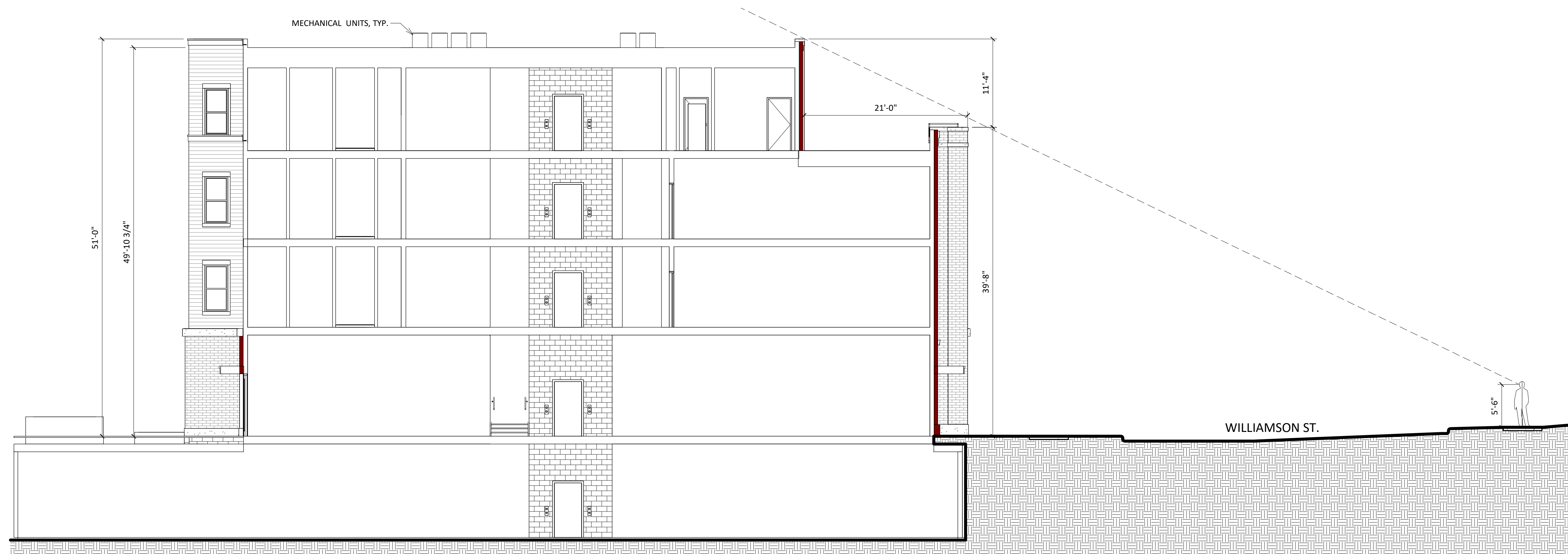
2 ELEVATION - NORTH WEST COLOR
1/8" = 1'-0"

ISSUED
ISSUED FOR LANDMARKS - JANUARY 13, 2023
ISSUED FOR LUA - MARCH 27, 2023
ISSUED FOR ADDRESSING - MAY 30, 2023

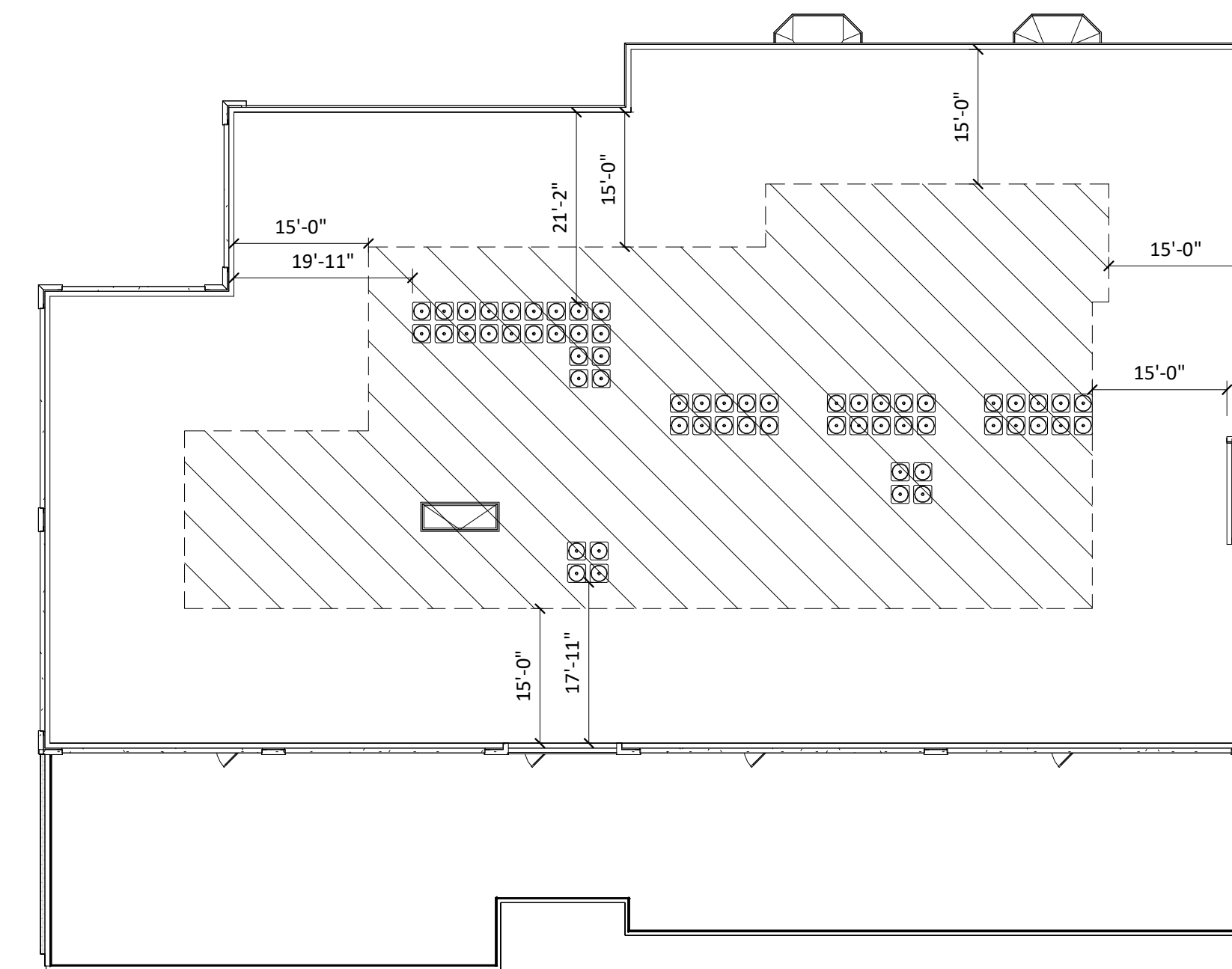
PROJECT TITLE
**Threshold
Development
Struck & Irwin
Site**

838 Williamson St.
Madison, WI
SHEET TITLE
**EXTERIOR
ELEVATIONS
COLOR**

SHEET NUMBER
X204
PROJECT NUMBER 2241



1 838 WILLIAMSON ST BUILDING SECTION
 X301 1/8" = 1'-0"



2 00 - WILLY ST - ROOF PLAN
 X301 1/16" = 1'-0"

ISSUED

PROJECT TITLE

**Threshold
 Development
 Struck & Irwin
 Site**

838 Williamson St.
 Madison, WI & 306 S.
 Paterson St. Madison,
 Wisconsin

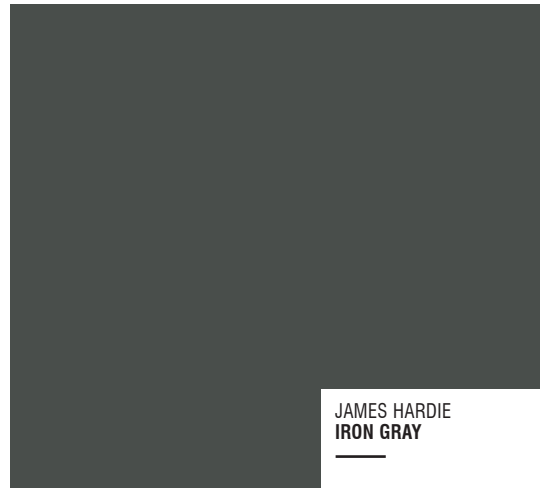
SHEET TITLE

**ROOFTOP MECH.
 SIGHTLINES**

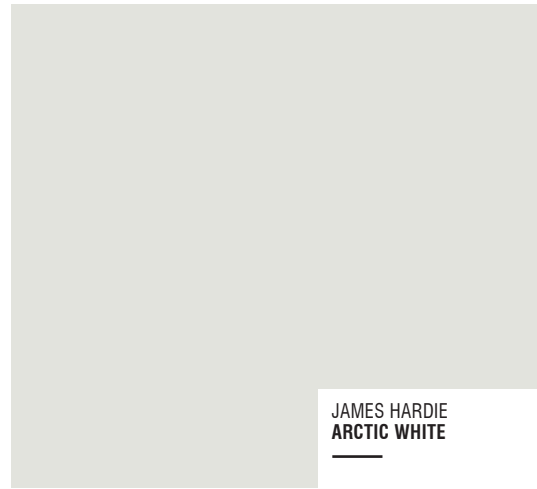
SHEET NUMBER

X301

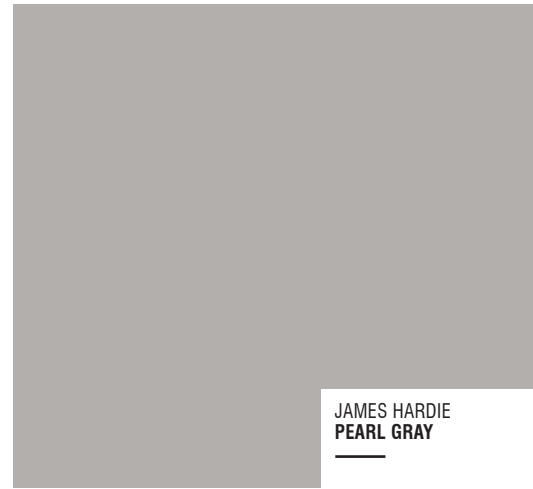
PROJECT NUMBER 2241



COMPOSITE LAP SIDING 6"
SMOOTH



COMPOSITE TRIM
SMOOTH



COMPOSITE PANEL
SMOOTH



METAL PANEL



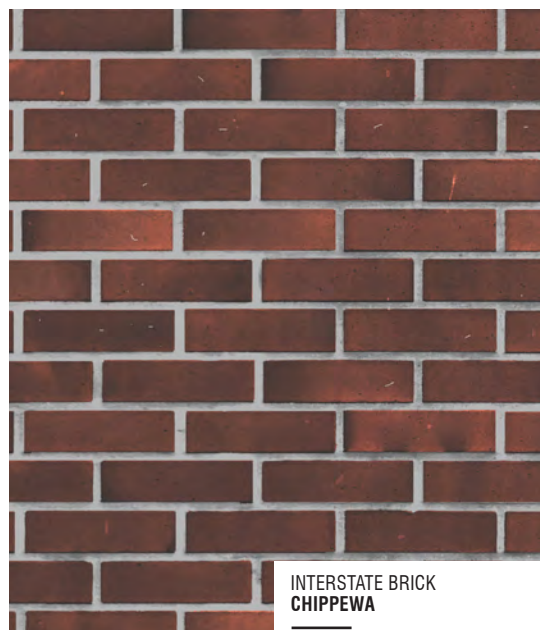
COMPOSITE PANEL & TRIM
SMOOTH



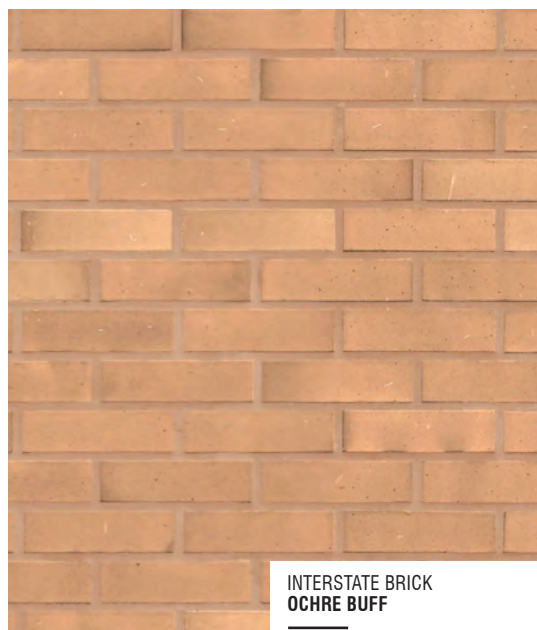
ALUM. STOREFRONT
RAILINGS & WINDOWS



CAST STONE SILLS & BANDS



6.1



6.2

BRICK



6.3

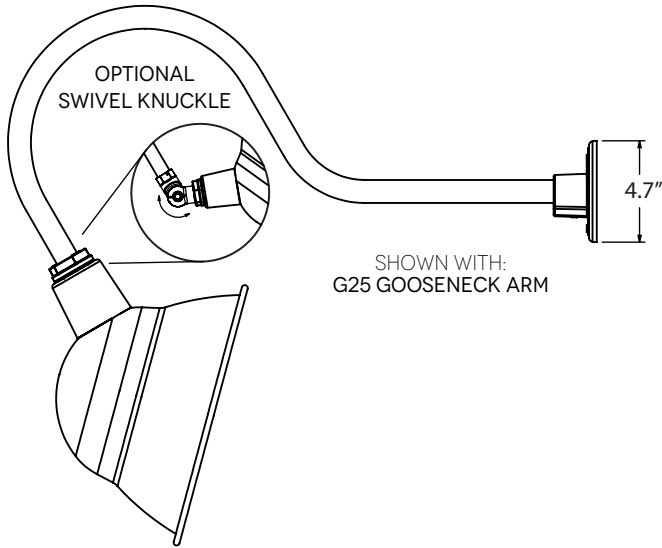
EXTERIOR MATERIAL SCHEDULE			
MARK	BUILDING ELEMENT	MANUFACTURER	COLOR
1	COMPOSITE LAP SIDING 6" - SMOOTH	JAMES HARDIE	IRON GRAY
2	COMPOSITE TRIM	JAMES HARDIE	ARCTIC WHITE
3	COMPOSITE PANEL - SMOOTH	JAMES HARDIE	PEARL GRAY
4	METAL PANEL	CMG	SILVER
5	COMPOSITE PANEL - SMOOTH	JAMES HARDIE	GREEN
6.1	BRICK VENEER	INTERSTATE BRICK	CHIPPEWA
6.2	BRICK VENEER	INTERSTATE BRICK	OCHRE BUFF
6.3	BRICK VENEER	INTERSTATE BRICK	PLATINUM
7.1	BRICK VENEER - SOLDIER		
7.2	BRICK VENEER - ROWLOCK		
7.3	BRICK VENEER - ANGLED		
8	CAST STONE	ROCKCAST	CREME BUFF
10	COMPOSITE WINDOWS	ANDERSEN	BLACK
11	ALUMINIUM STOREFRONT		BLACK
12	RAILINGS & HANDRAILS	SUPERIOR	BLACK
13	FABRIC AWNING		

Threshold
Development
Struck & Irwin
Site

MATERIAL
BOARD

826 Williamson St.
Madison, WI
January 26, 2023
KBA PROJECT #2241

MOUNTING STYLE



Gooseneck lamps at commercial storefronts

LUMINAIRE DIMENSIONS

SHADE CODE	HEIGHT (A)	DIAMETER (B)
ASE8	6"	8"
ASE10	7"	10"
ASE12	8.5"	12"
ASE14	9.5"	14"

SPECIFICATIONS

CERTIFICATIONS, LISTINGS & WARRANTY

MADE IN THE USA
 Manufactured and Hand-Crafted in Our 60,000 Square Foot Facility Located in Titusville, FL

CSA LISTED FOR WET LOCATIONS

LIMITED WARRANTY
 For Additional Information on Our Limited Warranty, Please See Our Terms & Conditions

UL CERTIFICATION
 UL Listed Fixtures Available upon Request. Please Consult Factory for Additional Information.

CONSTRUCTION & FINISH (CONTINUED)

COPPER
 Hand-Spun from High Purity .032 Thick C11000-O60 ETP Copper

BRASS
 Hand-Spun from High Purity .050" Thick C2600-O60 Brass

GOOSENECK
 1/2" Nominal (0.84" Actual) or 3/4" Nominal (1.05" Actual) Sch 40, 6063 Aluminum Gooseneck

MAX FIXTURE WEIGHT
 10 lbs

CONSTRUCTION & FINISH

POWDER COAT SHADE
 Hand-Spun from High Purity 3003-O Temper Aluminum

GALVANIZE SHADE
 Hand Spun from High Quality Galvanized Steel

PORCELAIN SHADE
 Hand-Spun from 20 Gauge Porcelain Steel

POWDER COAT FINISHES
 Polyester Powder Coat Finishes Are Electro-Staticly Applied and Thermocured

PORCELAIN FINISHES
 Applied by Hand and Fired in a High Temperature Oven

LIGHT SOURCE

INCANDESCENT
 Medium Base E26 Socket, 120 VAC, 200W Max

COMPACT FLUORESCENT
 Bi-Pin Base GU24 Socket, 120 VAC, 23W Max

SPECIFICATIONS

Certifications/Qualifications

Energy Star	Yes
Title 24 Compliant	Yes
	www.kichler.com/warranty

Dimensions

Base Backplate	5.00" X 5.00"
Extension	6.50"
Weight	2.50 LBS
Height from center of Wall opening (Spec Sheet)	3.50"
Height	7.00"
Width	5.00"

Light Source

Delivered Lumens	450
Dimmable	Yes
Expected Life Span (Hours)	45000
Lamp Included	Integrated
Light Source	LED
Max or Nominal Watt	10.00
Max Wattage/Range	10W

Mounting/Installation

Interior/Exterior	Exterior
Location Rating	Wet
Mounting Style	Wall Mount
Mounting Weight	2.50 LBS

Photometrics

Color Rendering Index	90
Kelvin Temperature	3000K

FIXTURE ATTRIBUTES

Housing

Primary Material	EPMM
Shade Dimensions	4.60" D X 7.00"

Product/Ordering Information

SKU	11309BKTLED
Finish	Textured Black
Style	Other
UPC	783927545280

Finish Options

- Textured Black



Wall Sconces at walk up unit entrances



D-Series Pole Mount LED Area Luminaire



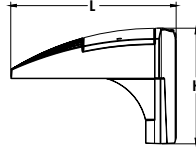
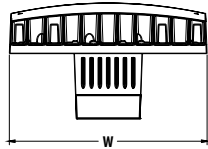
Buy American

d^{series}

Parking Lot lighting

Specifications Luminaire

EPA: 0.8 ft² (.07 m²)
Width: 13-3/4" (34.9 cm)
Length: 11.5" (29.2 cm)
Height: 8" (20.3 cm)
Weight: 16.03 lbs (7.3 kg)



Catalog Number

Notes

Type

Hit the Tab key or mouse over the page to see all interactive elements.

Introduction

The D-Series Pole Mount luminaire is a stylish, fully integrated LED solution for area and site applications. It features a sleek, modern design and is carefully engineered to provide long-lasting, energy-efficient lighting with a variety of optical and control options for customized performance.

With an expected service life of over 20 years of nighttime use and up to 74% in energy savings over comparable 250W metal halide luminaires, the D-Series Pole Mount is a reliable, low-maintenance lighting solution that produces sites that are exceptionally illuminated.

Ordering Information

EXAMPLE: DSXWPM LED 20C 1000 40K T5M MVOLT SPUMBA DDBXD

DSXWPM LED	Series	LEDs	Drive current	Color temperature	Distribution	Voltage	Mounting ³
DSXWPM LED	10C	10 LEDs (one engine)	350 350 mA 530 530 mA	30K 3000K 40K 4000K	T2S Type II short T2M Type II medium	MVOLT ¹ 120 ¹ 208 ¹ 240 ¹ 277 ¹ 347 ² 480 ²	Shipped included SPUMBA Square pole universal mounting adapter RPUMBA Round pole universal mounting adapter PUMBA Square and round universal mounting adapters
	20C	20 LEDs (two engines)	700 700 mA 1000 1000 mA (1 A)	50K 5000K AMBPC Amber phosphor converted	T3S Type III short T3M Type III medium T4M Type IV medium TFTM Forward throw medium T5M Type V medium T5S Type V short T5A Type V area T5W Type V wide SYMDF Symmetric diffuse		

Control Options	Other Options	Finish (required)
Shipped installed PE Photoelectric cell, button type ⁴ DMG 0-10v dimming wires pulled outside fixture (for use with an external control, ordered separately) PIR Motion/ambient light sensor, <15' mtg ht ^{5,6} PIRH Motion/ambient light sensor, 15-30' mtg ht ^{5,6} PIR1FC3V Motion/ambient sensor, 8-15' mounting height, ambient sensor enabled at 1fc ⁷ PIRH1FC3V Motion/ambient sensor, 15-30' mounting height, ambient sensor enabled at 1fc ⁷	Shipped installed SF Single fuse (120, 277, 347V) ⁸ DF Double fuse (208, 240, 480V) ⁸ HS House-side shield ⁹ Shipped separately⁹ BSW Bird-deterrent spikes WG Wire guard VG Vandal guard DDL Diffused drop lens	DDBXD Dark bronze DBLXD Black DNAXD Natural aluminum DWHXD White DSSXD Sandstone DDBTXD Textured dark bronze DBLTXD Textured black DNATXD Textured natural aluminum DWHGXD Textured white DSSTXD Textured sandstone

NOTES

- MVOLT driver operates on any line voltage from 120-277V (50/60 Hz). Specify 120, 208, 240 or 277 options only when ordering with fusing (SF, DF options), or photocontrol (PE option).
- Only available with 20C, 700mA or 1000mA. Not available with PIR, PIRH.
- Not available with 90 degree mounting. Not recommended for 3" poles.
- Photocontrol (PE) requires 120, 208, 240, 277 or 347 voltage option. Not available with motion/ambient light sensors (PIR or PIRH).
- PIR specifies the SensorSwitch SBGR-10-ODP control; PIRH specifies the SensorSwitch SBGR-6-ODP control; see Motion Sensor Guide for details. Dimming driver standard. Includes ambient light sensor. Not available with "PE" option (button type photocell).
- Not available with 20 LED/1000 mA configuration (DSXWPM LED 20C 1000).
- PIR1FC3V specify the SensorSwitch SBGR-10-ODP control; PIRH1FC3V specify the SensorSwitch SBGR-6-ODP control; see Motion Sensor Guide for details. Dimming driver standard. Not available with PER5 or PER7. Separate on/off required.
- Single fuse (SF) requires 120, 277, or 347 voltage option. Double fuse (DF) requires 208, 240, or 480 voltage option.
- Also available as a separate accessory; see Accessories information.

Accessories

Ordered and shipped separately.

DSXWHS U	House-side shield (one per light engine)
DSXWBSW U	Bird-deterrent spikes
DSXW1WG U	Wire guard accessory
DSXW1VG U	Vandal guard accessory
DSXWDDL U	Diffused drop lens



One Lithonia Way • Conyers, Georgia 30012 • Phone: 1-800-705-SERV (7378) • www.lithonia.com
 © 2013-2021 Acuity Brands Lighting, Inc. All rights reserved.

DSXWPM-LED
 Rev. 04/19/21
 Page 1 of 5

June 26, 2023

Heather Bailey, Ph.D.
Preservation Planner
Department of Planning & Community & Economic Development
Madison Municipal Building, Suite 017
215 Martin Luther King Jr. Boulevard
Madison, Wisconsin 53703



Re: Follow up items for 826 Williamson Street
Legistar File ID#: 70738
KBA Project #2241

Heather Bailey,

Attached we are submitting several items to follow up on outstanding issues to review.

Specifically we are including drawings and associated information for:

- 1 – Exterior Lighting
- 2 – Visibility of Roof Top Units
- 3 – Materials Boards (specifically regarding the Fiber Cement Siding)

Item 1 – Exterior Lighting

Commercial Lighting - As indicated on the exterior elevations we are calling out Gooseneck lamps over the commercial storefronts. These lamps are the same style of lamps used on 811 Williamson Street, 940 Williamson Street, 1370 Williamson Street and several more.

Residential Entrance Lighting – The lighting at the main entrance to the building on Williamson Street is lit from above with recessed can lights in the overhead canopy – no other decorative lights are present in this area.

Walk Up Entrance – The individual walk-up entrances each have a 7” high wall sconce (cut sheet attached). These lights are meant to be subtle, providing only downlight and no uplighting, and were selected to be as unobtrusive as possible while still providing adequate lighting.

Side/Back Entrance - The side entrance to the building (off of parking area, not directly off of street) will also be lit with recessed lighting in the overhead canopy by the door, no decorative lights to be located here either.

Parking Lot Lighting – Locations for the parking pole light locations are indicated on attached page X106.1 (Site Plan). Specifications for the light are included in the cut sheets as well. The specified lights here provide the code required lighting level and still comply with the night-sky ordinance. The lights are similar to (but smaller) than the existing street lighting on Williamson Street.

Item 2 – Visibility of Roof Top Units

Attached sheet X301 includes a diagram indicating Roof Top Unit locations, their proximity to the roof edge, and the line of vision from across the street.

Item 3 – Material Board

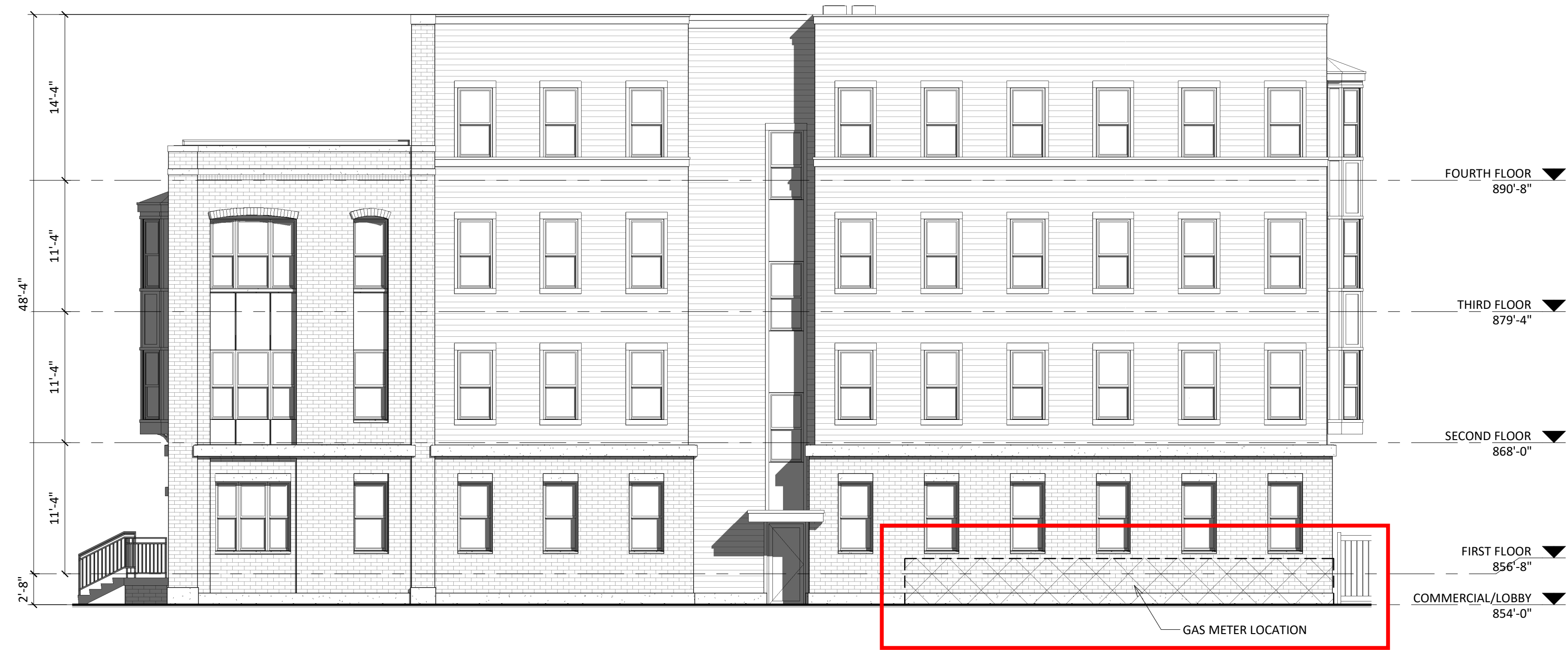
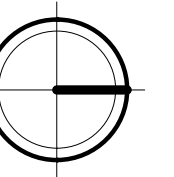
The last page in the attached supplemental materials includes an updated list of materials, to include specific instruction for all Fiber Cement materials to be smooth sided and not the textured side.

Thank you for your time reviewing our materials.

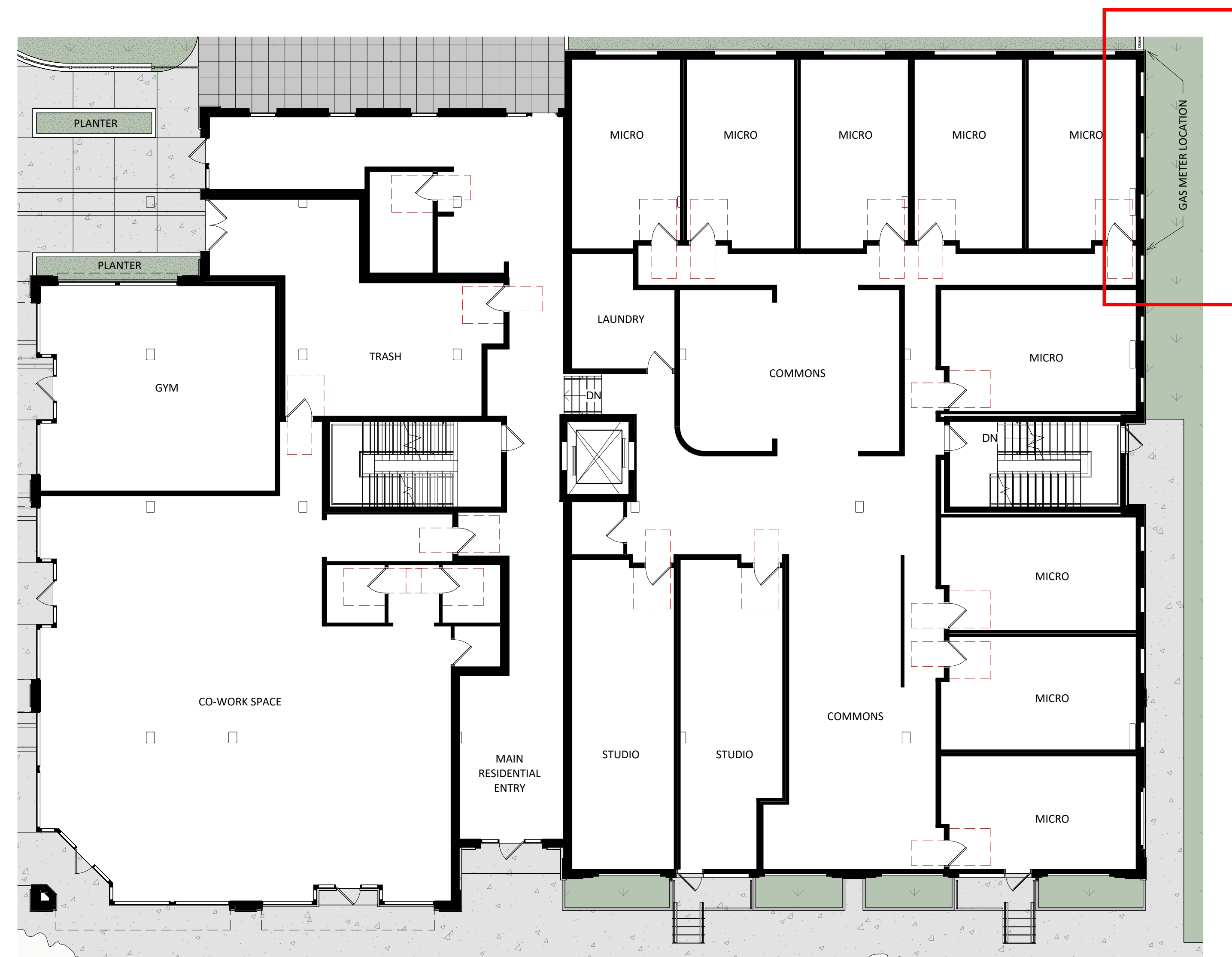
Sincerely,

A handwritten signature in black ink, appearing to read 'JM', with a long horizontal flourish extending to the right.

Jacob Morrison, AIA, NCARB
Lead Designer



2 ELEVATION - NORTH EAST GAS METER LOCATION
X128 1/8" = 1'-0"



1 FIRST FLOOR - GAS METER LOCATION
X128 1" = 10'-0"

PROJECT TITLE
**Threshold
Development
Struck & Irwin Site**

838 Williamson St.
Madison, WI
SHEET TITLE
**GAS METER
LOCATION**

SHEET NUMBER

X128

PROJECT NUMBER

2241