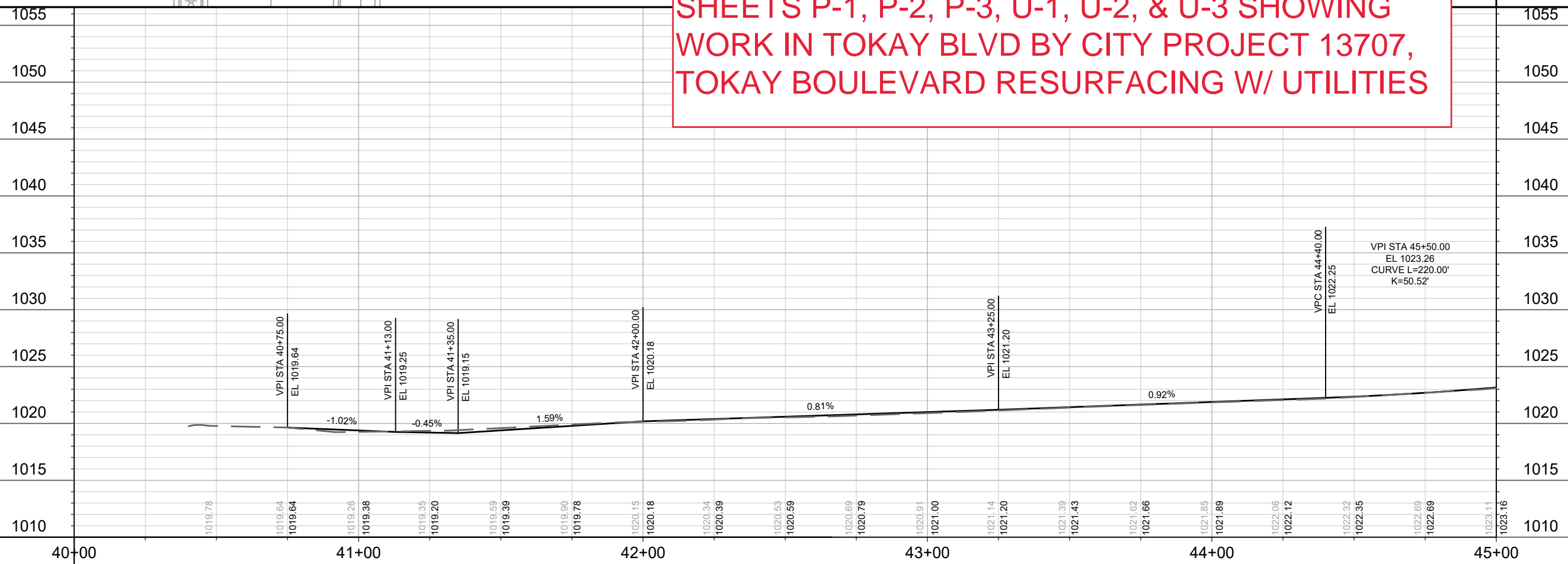


- STA 41+13.00, 8.00' LT
- 1019.18' EP/LOW POINT
- STA 41+04.53, 13.25' LT
- 1019.25' EP/HP/MID PT
- STA 41+09.78, 8.00' LT
- 1019.21' EP/PT
- STA 41+23.39, 9.49' RT
- 1018.67' EP/PT
- STA 41+13.41, 11.16' RT
- 1018.63' EP/LOW POINT
- STA 41+00.83, 18.80' RT
- 1018.84' EP/HP/MID PT
- STA 41+09.63, 25.18' RT
- 1019.08' SW/(EXIST SW 1019.08')
- STA 40+91.39, 41.40' RT
- 1018.71' EP/PC MATCH EXIST

- STA 44+24.30, 8.00' LT
- 1021.84' EP/PC
- STA 44+29.23, 12.17' LT
- 1021.91' EP/HP/MID PT
- STA 44+66.09, 13.59' LT
- 1022.25' EP/MID PT
- STA 44+72.94, 8.00' LT
- 1022.46' EP/PT

SHEETS P-1, P-2, P-3, U-1, U-2, & U-3 SHOWING
WORK IN TOKAY BLVD BY CITY PROJECT 13707,
TOKAY BOULEVARD RESURFACING W/ UTILITIES

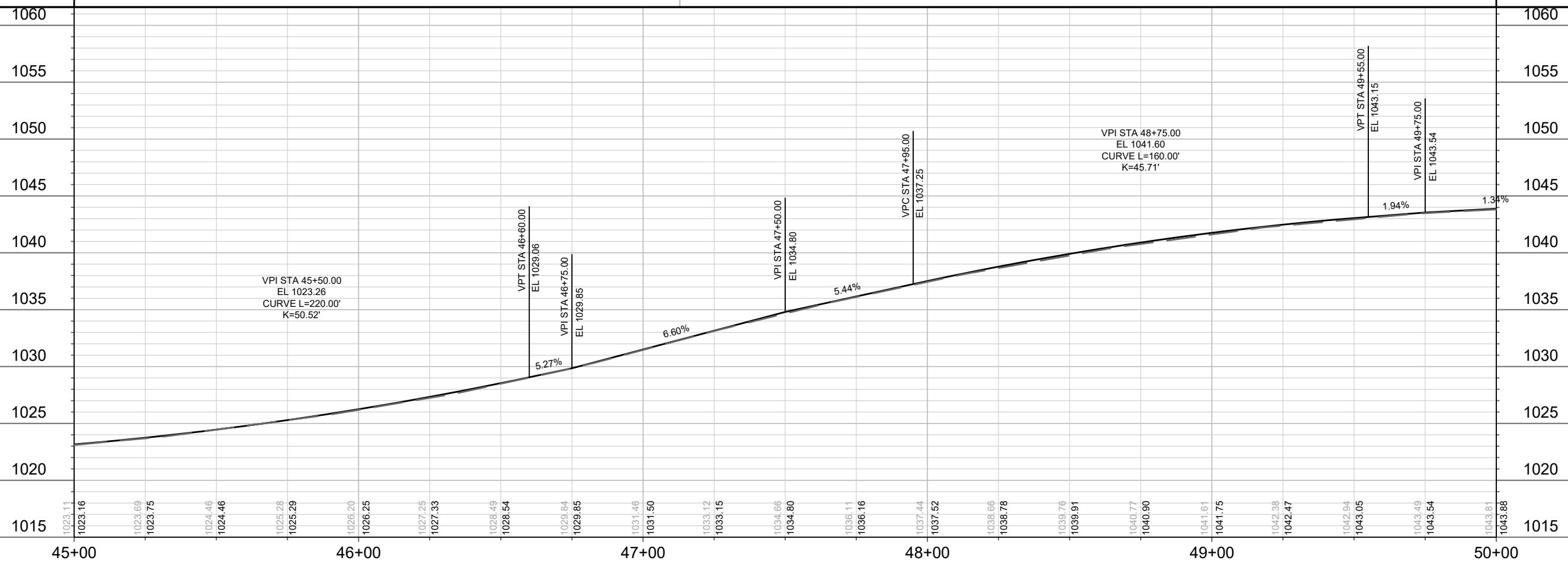
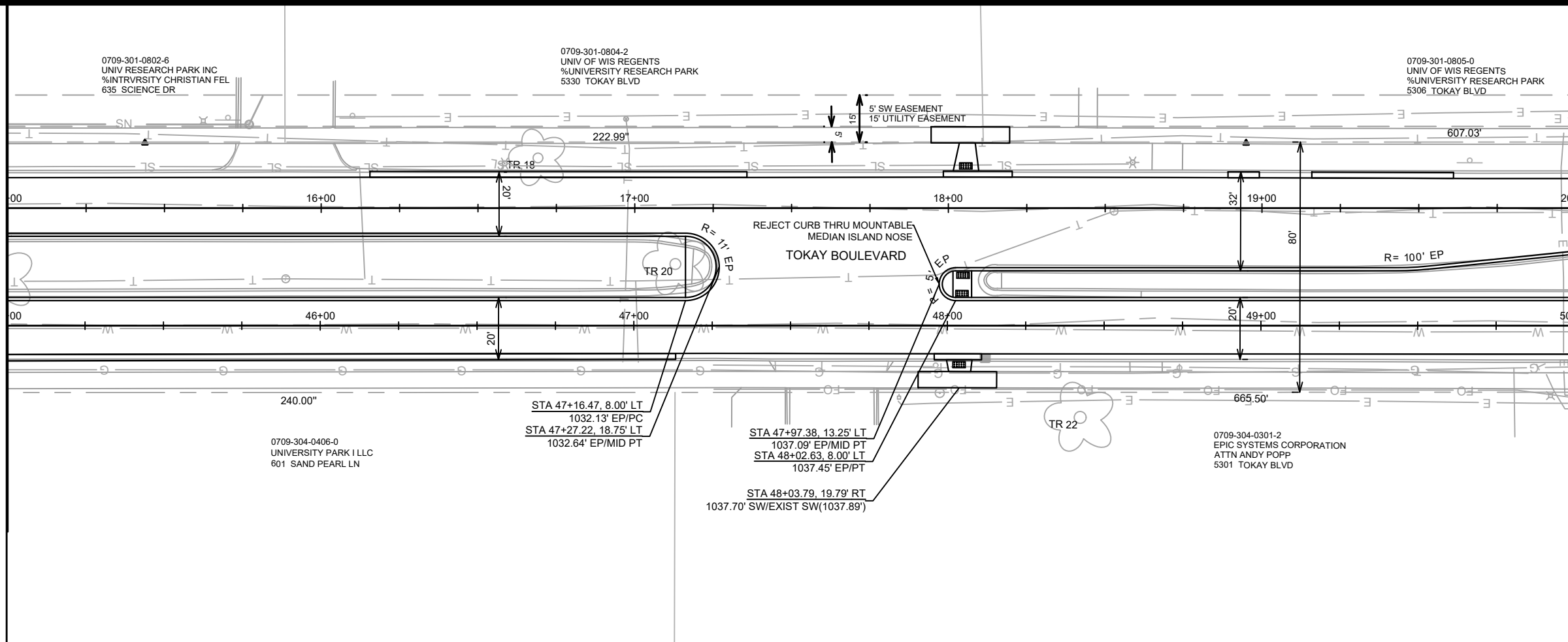


MATCH LINE 45+00.00

13707	MADISON, WI	CONTRACT NO: 8623	P-1
PLAN AND PROFILE - EASTBOUND			
TOKAY BOULEVARD RESURFACING ASSESSMENT DISTRICT - 2022			
M:\DESIGN\Projects\13707\CAD\Streets\13707\EN-StreetsCorridor.dwg			
13707		P-1	

MATCH LINE 45+00.00

MATCH LINE 50+00.00



DATE	BY
REVISION	
DESIGNED BY: ###	13707
DATE: 5/25/2022 1:42 PM	Scale: 1" = 40'
PAGE	P-2

13707
MADISON, WI
TOKAY BOULEVARD RESURFACING ASSESSMENT DISTRICT - 2022
CONTRACT NO: 8623

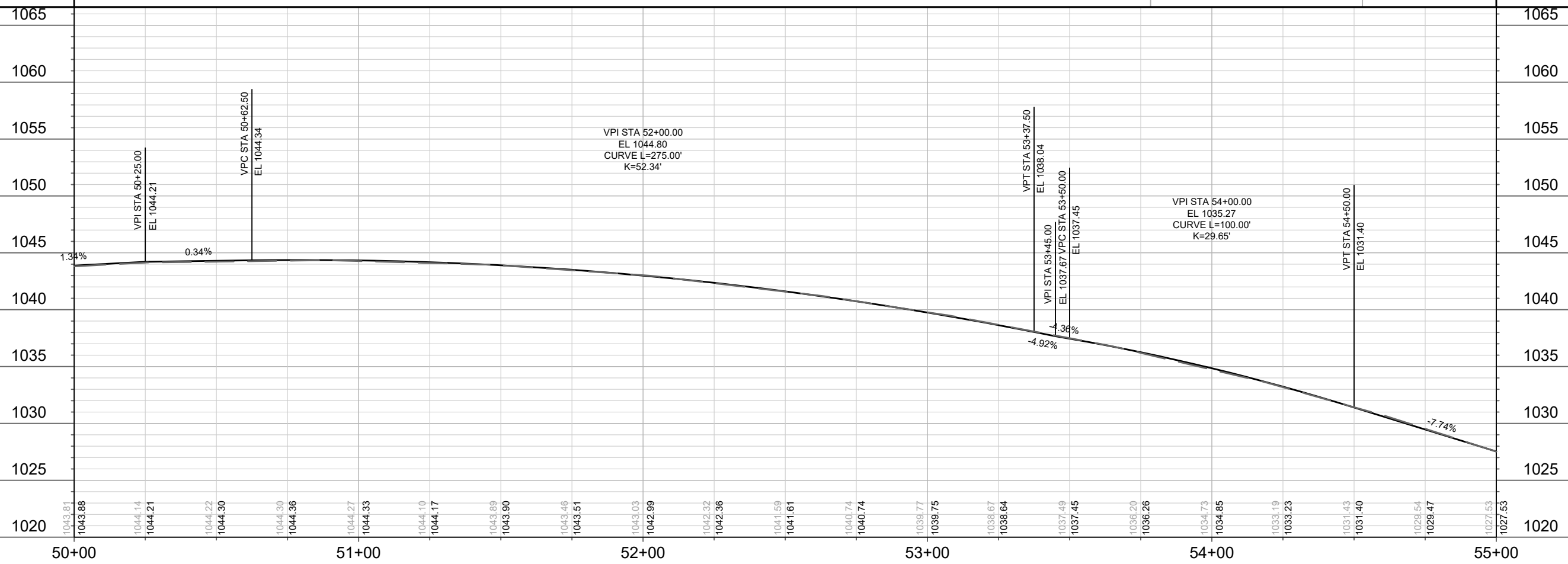
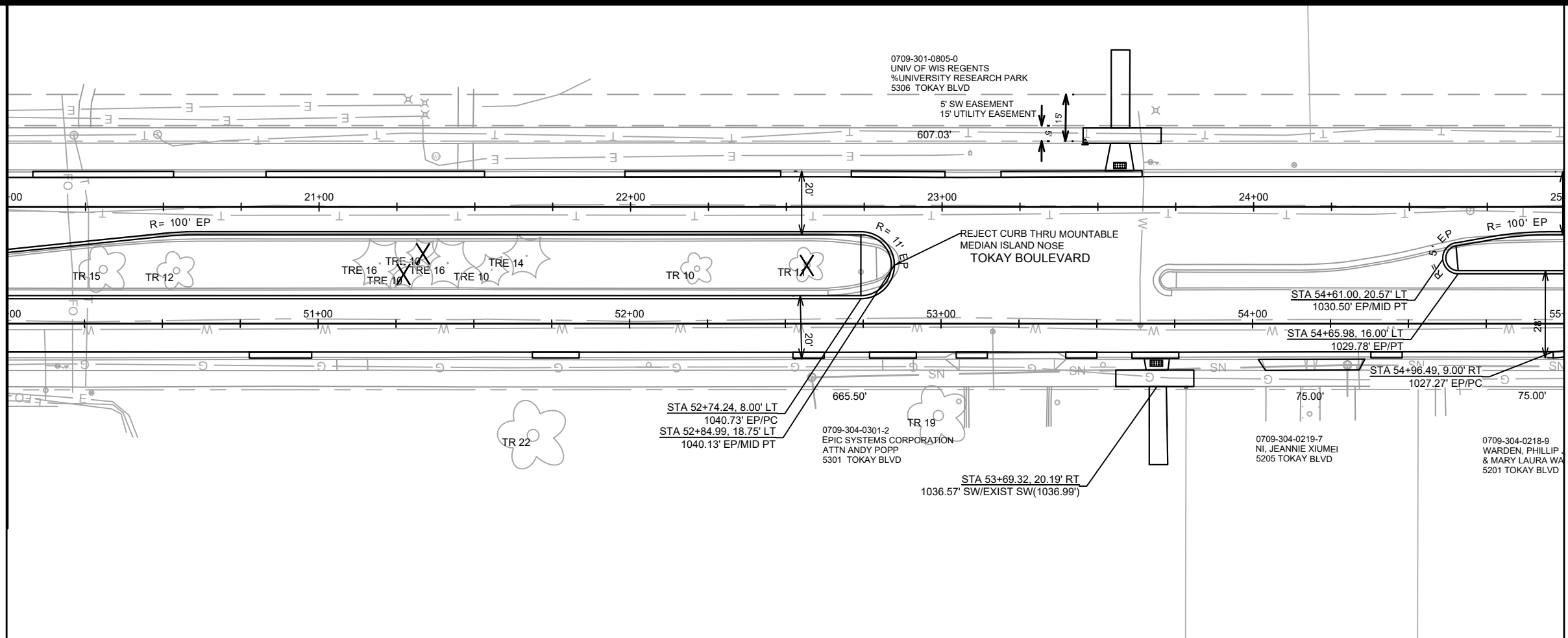
M:\DESIGN\Projects\13707\CAD\Streets\13707EN-StreetsCorridor.dwg



13707
P-2

MATCH LINE 50+00.00

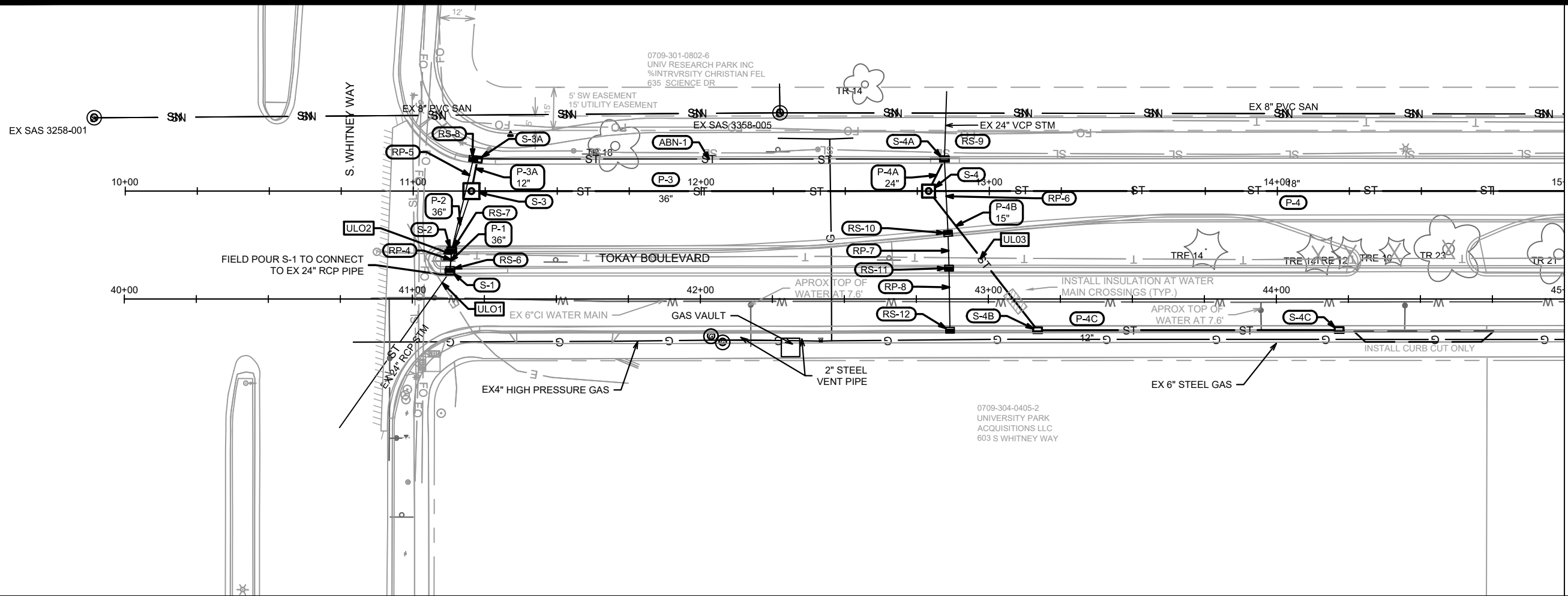
MATCH LINE 55+00.00



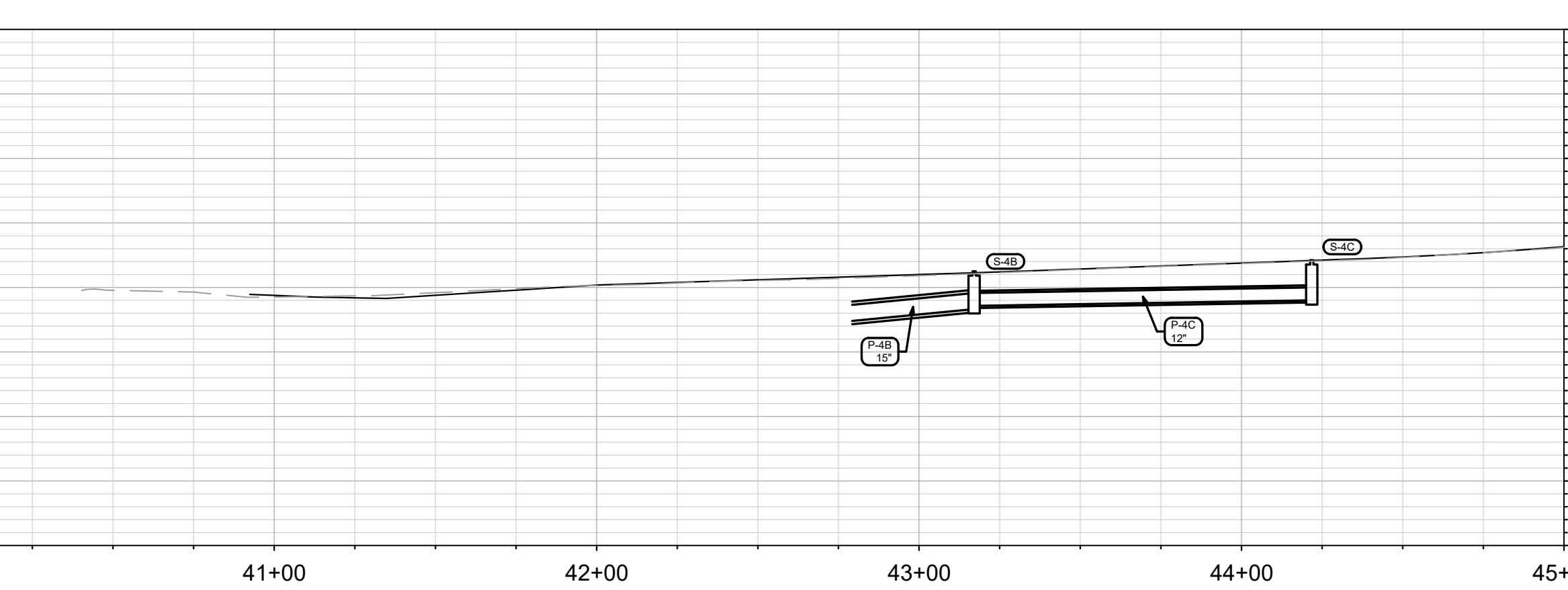
DATE	BY
REVISION	
DESIGNED BY: ##	13707
DATE: 5/25/2022 1:42 PM	
SCALE: 1" = 40'	
PAGE	P-3

13707
MADISON, WI
TOKAY BOULEVARD RESURFACING ASSESSMENT DISTRICT - 2022
CONTRACT NO: 8623

13707
P-3



1040
1035
1030
1025
1020
1015
1010
1005
1000



1040
1035
1030
1025
1020
1015
1010
1005
1000

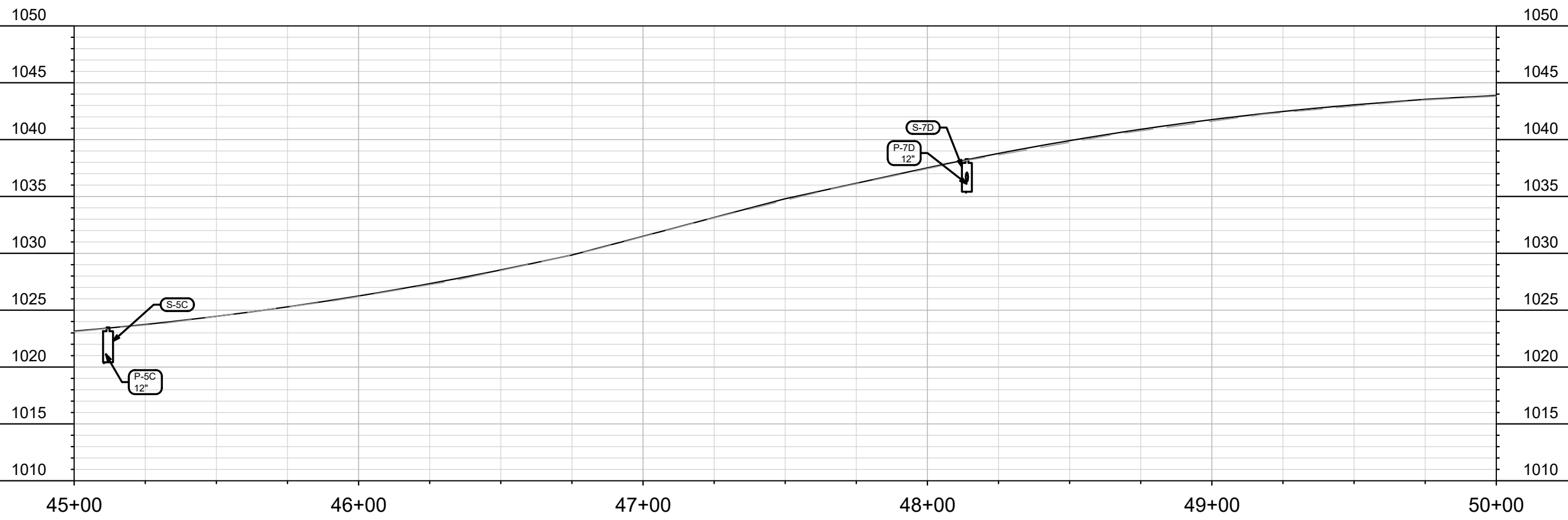
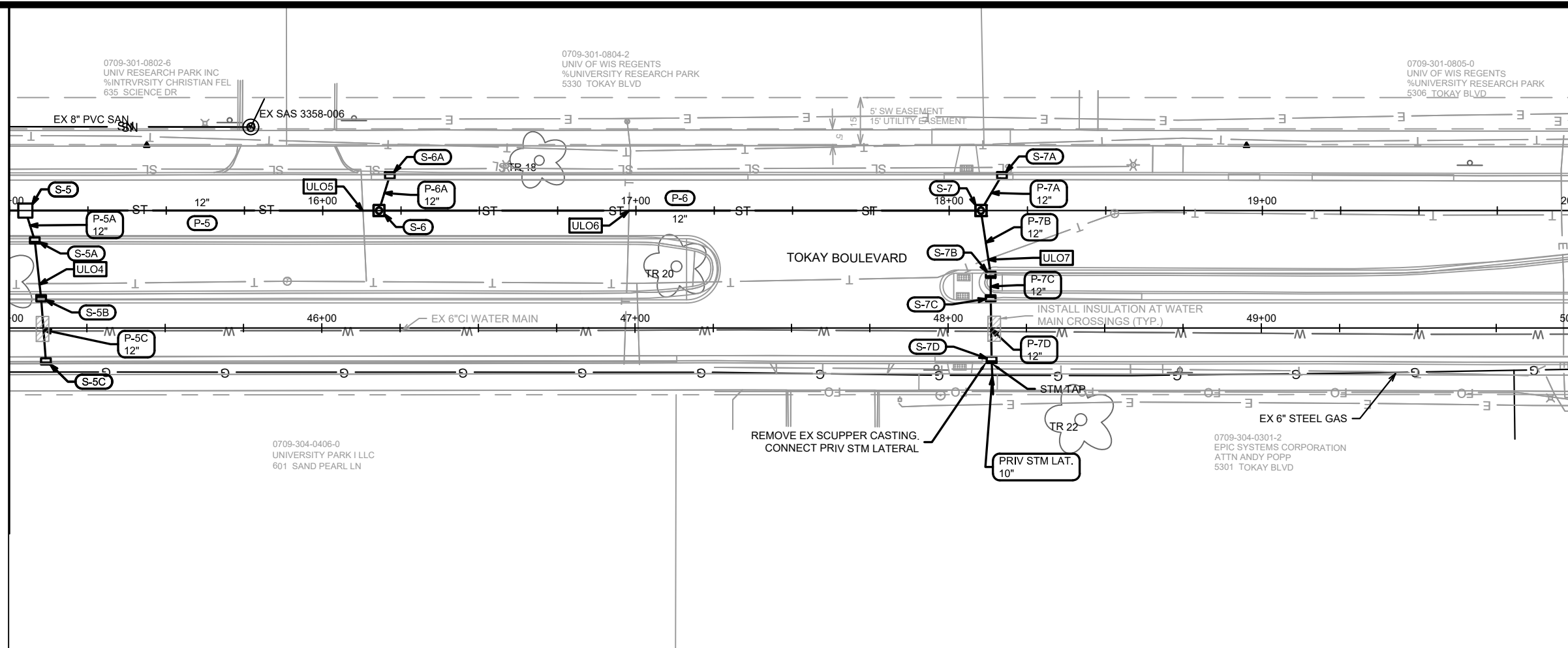
MARK	REVISION	DATE	BY

13707
MADISON, WI
TOKAY BOULEVARD RESURFACING ASSESSMENT DISTRICT - 2022
CONTRACT NO: 8623
U-1



13707
U-1

M:\DESIGN\Projects\13707\CAD\Sewers\13707_Sewers.dwg



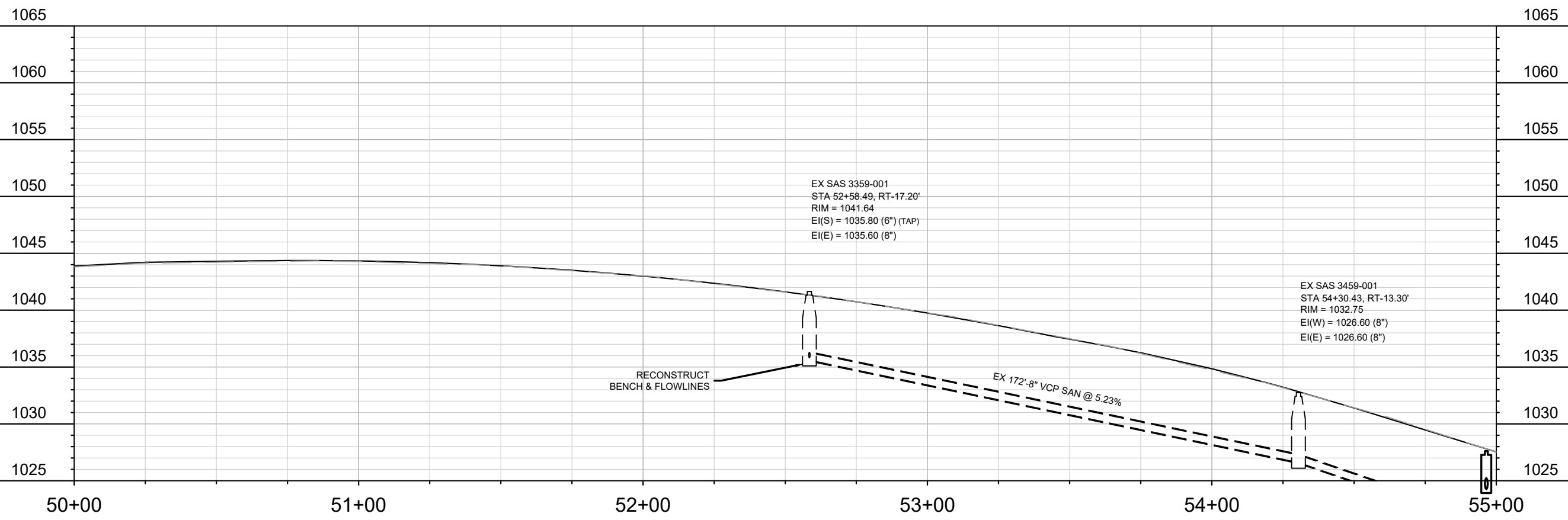
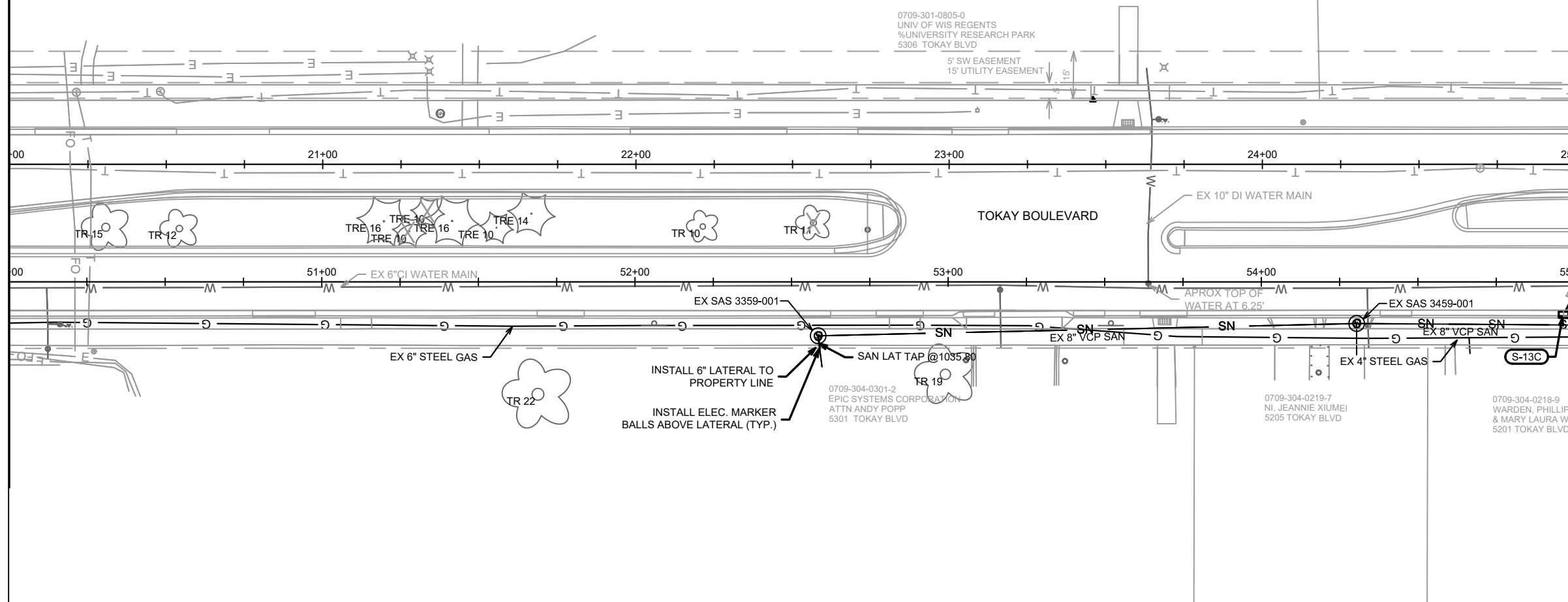
MARK	REVISION	DATE	BY

13707
 MADISON, WI
 TOKAY BOULEVARD RESURFACING ASSESSMENT DISTRICT - 2022
 CONTRACT NO: 8623

UTILITY PLAN & PROFILE - TOKAY EASTBOUND
 M:\DESIGN\Projects\13707\CAD\Sewers\13707_Sewers.dwg



13707
 U-2



MARK	REVISION	DATE	BY

13707
 MADISON, WI
 TOKAY BOULEVARD RESURFACING ASSESSMENT DISTRICT - 2022
 CONTRACT NO: 8623

UTILITY PLAN & PROFILE - TOKAY EASTBOUND
 M:\DESIGN\Projects\13707\CAD\Sewers\13707_Sewers.dwg

13707
 U-3