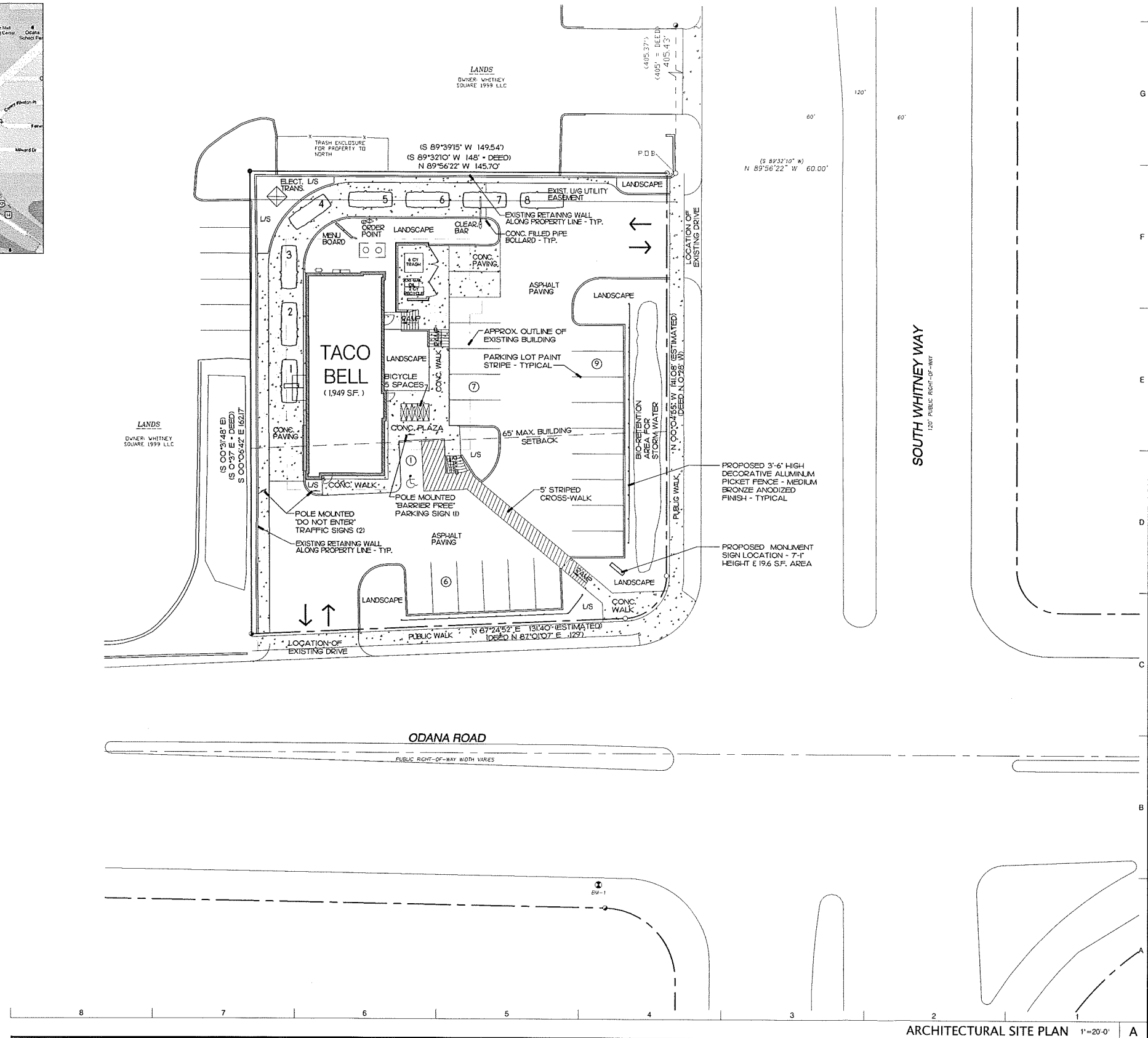
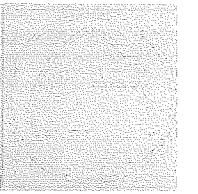


VICINITY
MAP
NOT TO SCALE



ARCHITECTURAL SITE PLAN 1"=20'-0" A



L + A
ARCHITECTS
INC. A.I.A.

2430 ROCHESTER COURT
SUITE 200
TROY, MICHIGAN 48068
PHONE (248) 524-4700 FAX (248) 524-9746

PROJECT NO. T1202C

DATE	ISSUE
4-2-2013	INITIAL UDC SUBMIT
4-9-2013	REVISED UDC SUBMIT
4-22-2013	REVISED PER C
6-19-2013	UDC and PC SUBMIT
7-8-2013	REV. UDC & PC SUBMIT

CONTRACT DATE:
BUILDING TYPE: MED-NI
PLAN VERSION: DEC 12
SITE NUMBER: 3094
STORE NUMBER:

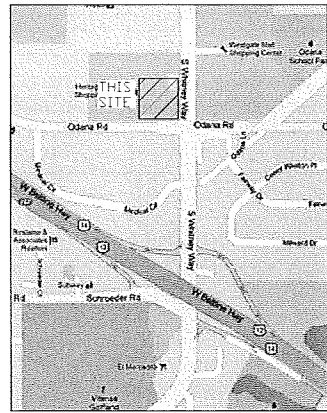
TACO BELL
698 S. Whitney Way
Madison, WI

TACO BELL
MEDIUM40-N

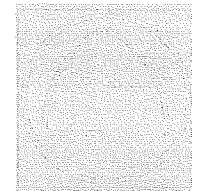
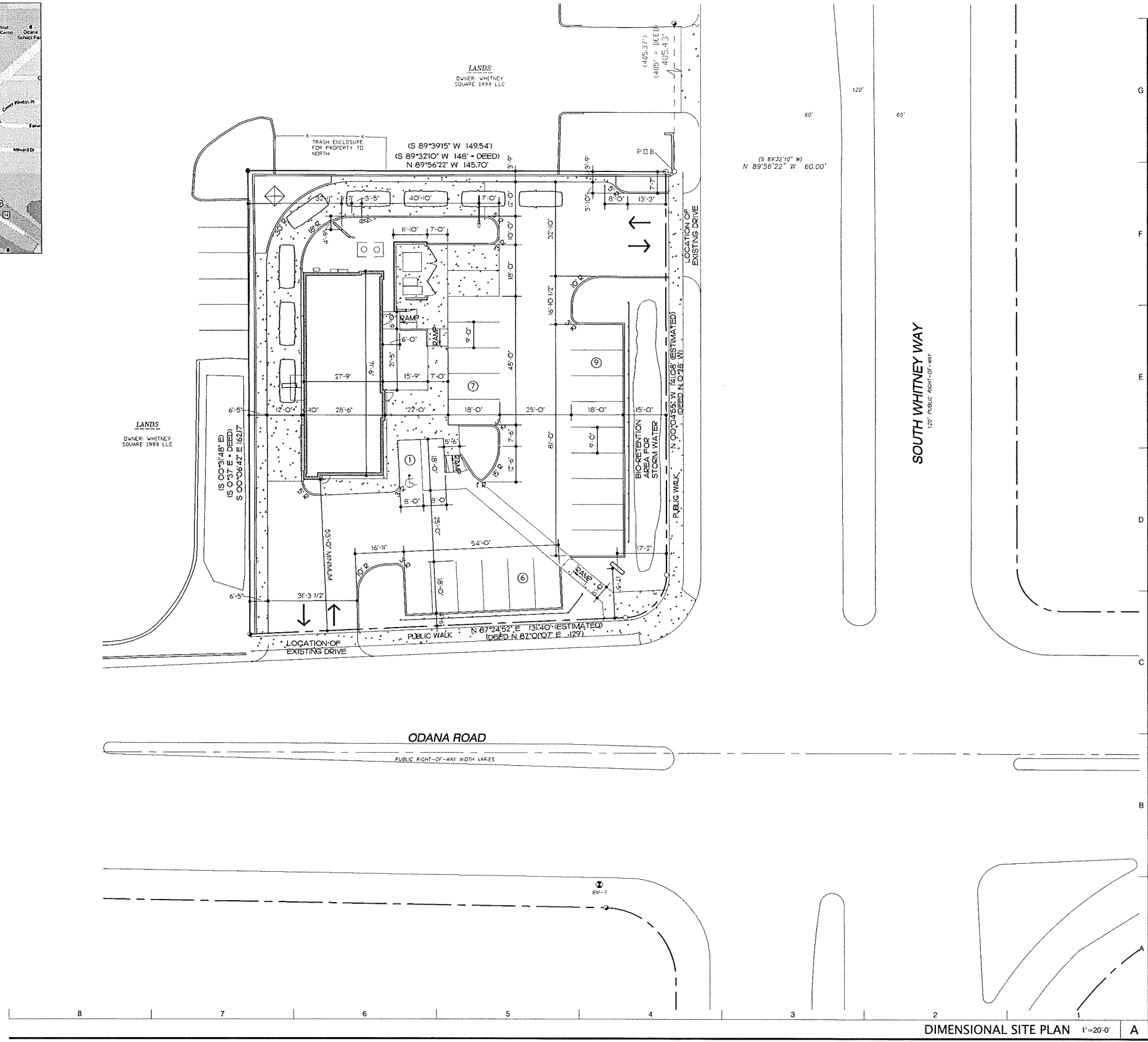
ARCH.
SITE
PLAN

AC0.1

PLOT DATE: 7-8



VICINITY
MAP
NOT TO SCALE



L + A
ARCHITECTS
INC. A.I.A.

2430 ROCHESTER COURT
SUITE 200
TROY, MICHIGAN 48063
PHONE (248) 524-4700 FAX (248) 524-9741

PROJECT NO. T1202C

DATE	ISSUE
4-2-2013	INITIAL UDC SUBMIT
4-9-2013	REVISED UDC SUBMIT
4-22-2013	REVISED PER C
6-19-2013	UDC and PC SUBMIT
7-8-2013	REV. UDC & PC SUBMIT

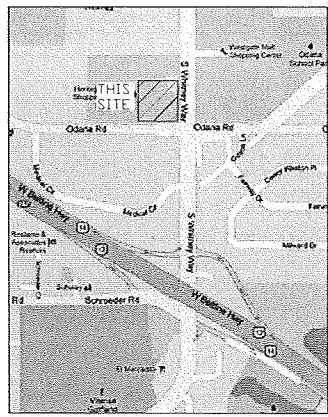
CONTRACT DATE:
BUILDING TYPE: MED-NI
PLAN VERSION: DEC 12
SITE NUMBER: 3094
STORE NUMBER:

TACO BELL
698 S. Whitney Way
Madison, WI



DIMENSIONAL
SITE
PLAN

AC0.2



VICINITY
MAP
NOT TO SCALE

TACO BELL
698 S. WHITNEY WAY
MADISON, WI
PREPARED BY: JOHN BUJAKE
ACCUSERV LIGHTING & EQUIPMENT
877-707-7378
502-961-0357 FAX
jbujake@accu-serv.com
JULY 3, 2013

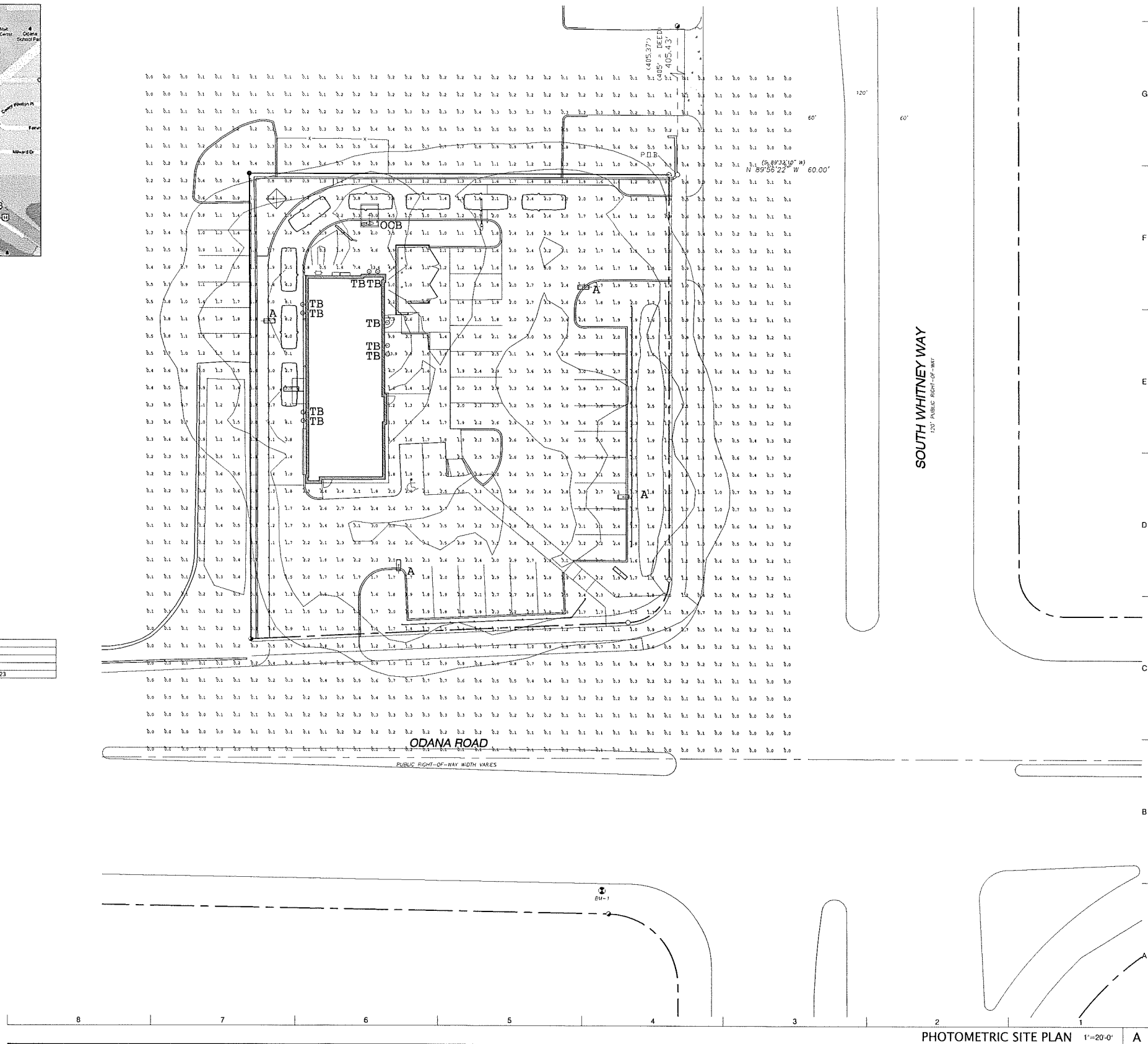
Label	Avg	Max	Min	Avg/Min	Max/Min
EXTENDED	1.17	13.9	0.0	N.A.	N.A.
VEHICULAR SURFACE	2.44	8.2	0.8	3.05	10.25

LIGHT LEVELS ARE MAINTAINED FOOT-CANDELES, INITIAL LEVELS ARE SLIGHTLY HIGHER

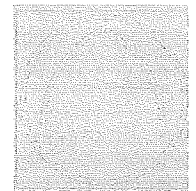
Symbol	Qty	Label	Arrangement	Total Lamp Lumens	ERP	Lum. Watts	Description
□	1	OCB	SINGLE	12500	0.300	185	TACO BELL - ORDER POINT CANOPY
○	9	TB	SINGLE	1230	0.900	36	AC03 05247-051-052 @ 9.17' A.F.G.
⊖	4	A	SINGLE	N.A.	0.900	271	STR-1W-6H-HT-12-0-UL-BZ-700-43K / PT-1H-BZ / 95200-425P23

LIGHTING RESTRICTIONS: TOTAL WATTAGE FOR SITE FIXTURES NOT TO EXCEED 0.10W/S.F. OF VEHICULAR SURFACE
AVERAGE LIGHT LEVEL NOT TO EXCEED 2.5 FOOT-CANDELES
MINIMUM LIGHT LEVEL TO BE 0.4 FOOT-CANDELES OR GREATER
AVERAGE/MINIMUM RATIO NOT TO EXCEED 5.0

VEHICULAR SURFACE: 13,145 S.F.
SITE FIXTURES ARE FULL CUTOFF 271W 43K LED w/ FLAT LENSES
POLES ARE 25'-0" FOR AN OVERALL FIXTURE MOUNTING HEIGHT OF 27'-6" A.F.G.



PHOTOMETRIC SITE PLAN 1"=20'-0" A



L + A
ARCHITECTS
INC. A.I.A.

2430 ROCHESTER COURT
SUITE 200
TROY, MICHIGAN 48063
PHONE (248) 524-4700 FAX (248) 524-9744

PROJECT NO. T1202C

DATE ISSUE

4-2-2013	INITIAL UDC SUBMIT
4-9-2013	REVISED UDC SUBMIT
4-22-2013	REVISED PER C
6-19-2013	UDC and PC SUBMIT
7-8-2013	REV. UDC & PC SUBMIT

CONTRACT DATE:
BUILDING TYPE: MED-RI
PLAN VERSION: DEC 12
SITE NUMBER: 3094
STORE NUMBER:

TACO BELL

698 S. Whitney Way
Madison, WI



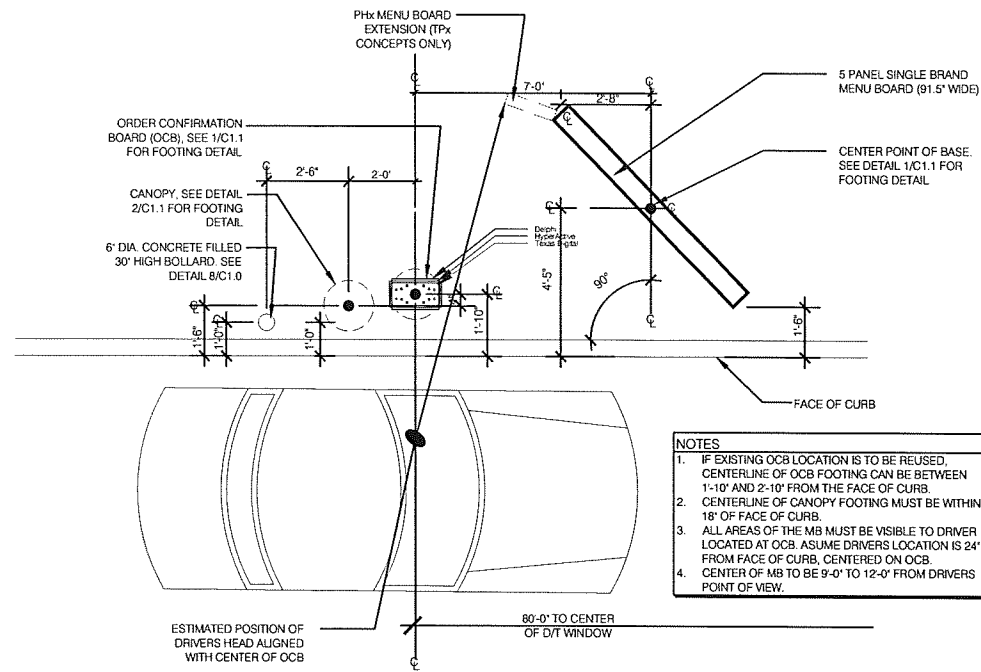
MEDIUM40-N

PHOTOMETRIC
SITE
PLAN

AC0.3

PLOT DATE: 7-3

NOT USED N.T.S. 17



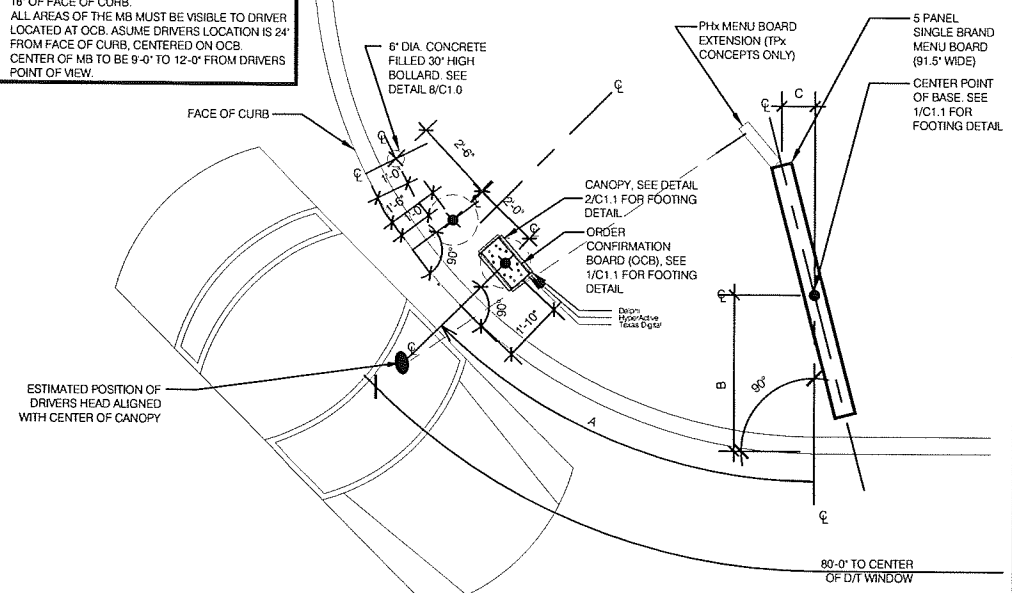
- NOTES**
1. IF EXISTING OCB LOCATION IS TO BE REUSED, CENTERLINE OF OCB FOOTING CAN BE BETWEEN 1'-10" AND 2'-10" FROM THE FACE OF CURB.
 2. CENTERLINE OF CANOPY FOOTING MUST BE WITHIN 18" OF FACE OF CURB.
 3. ALL AREAS OF THE MB MUST BE VISIBLE TO DRIVER LOCATED AT OCB. ASSUME DRIVERS LOCATION IS 24' FROM FACE OF CURB, CENTERED ON OCB.
 4. CENTER OF MB TO BE 9'-0" TO 12'-0" FROM DRIVERS POINT OF VIEW.

TCS008B

ENLARGED MENU BOARD DETAIL @ STRAIGHT CURB 3/8" = 1'-0" 10

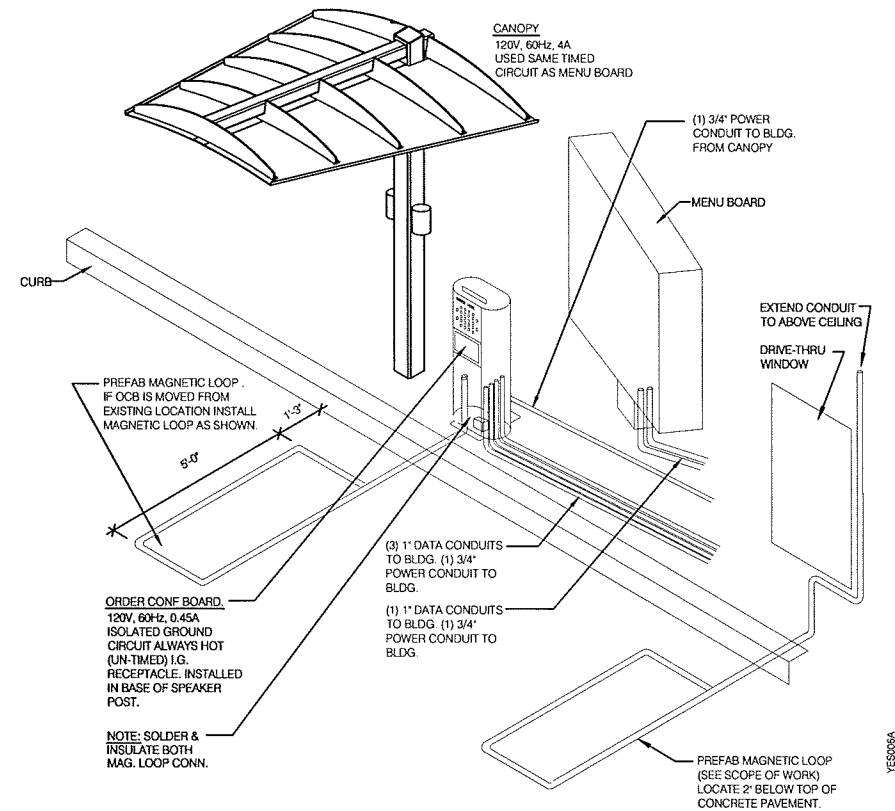
CORNER DIMENSIONS			
RADIUS	A	B	C
15'-0"	12'-5"	4'-8"	1'-0"
18'-0"	12'-6"	4'-8"	1'-3"
20'-0"	12'-7"	4'-8"	1'-5"

- NOTES**
1. IF EXISTING OCB LOCATION IS TO BE REUSED, CENTERLINE OF OCB FOOTING CAN BE BETWEEN 1'-10" AND 2'-10" FROM THE FACE OF CURB.
 2. CENTERLINE OF CANOPY FOOTING MUST BE WITHIN 18" OF FACE OF CURB.
 3. ALL AREAS OF THE MB MUST BE VISIBLE TO DRIVER LOCATED AT OCB. ASSUME DRIVERS LOCATION IS 24' FROM FACE OF CURB, CENTERED ON OCB.
 4. CENTER OF MB TO BE 9'-0" TO 12'-0" FROM DRIVERS POINT OF VIEW.



TCS008B

ENLARGED MENU BOARD DETAIL @ CURVED CURB 3/8" = 1'-0" 2



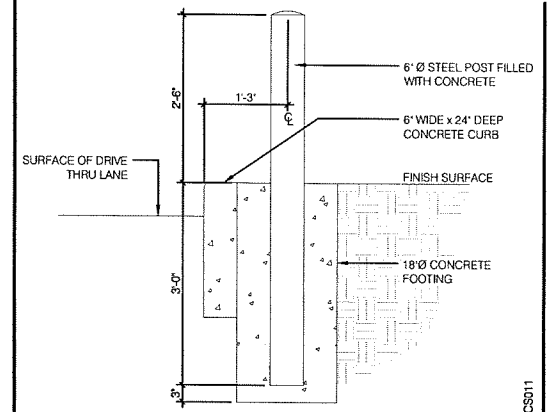
YES006A

DRIVE-THRU COMMUNICATIONS ISOMETRIC N.T.S. 16

NOT USED N.T.S. 11

NOT USED N.T.S. 12

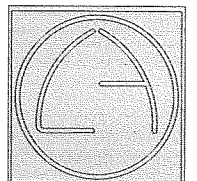
NOT USED N.T.S. 3



TCS011

BOLLARD DETAIL 3/4" = 1'-0" 8

NOT USED N.T.S. 4



L + A
ARCHITECTS
INC. A.I.A.
2430 ROCHESTER COURT
SUITE 200
TROY, MICHIGAN 48083
PHONE (248) 524-4700 FAX (248) 524-9746

PROJECT NO. T12020

DATE	ISSUE
4-2-2013	INITIAL UDC SUBMITTAL
4-9-2013	REVISED UDC SUBMITTAL
4-22-2013	REVISED PER CITY
6-19-2013	UDC and PC SUBMITTAL
7-8-2013	REV. UDC & PC SUBMITTAL

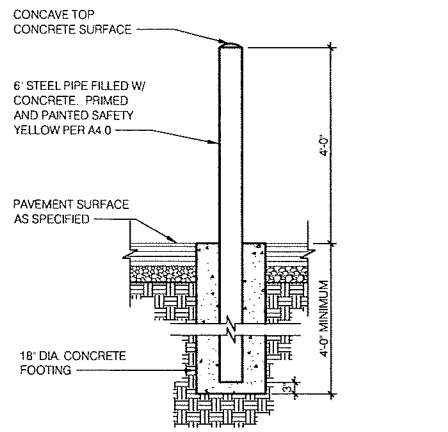
CONTRACT DATE: --
BUILDING TYPE: MED-NI-40
PLAN VERSION: DEC 12-A
SITE NUMBER: 309441
STORE NUMBER: --

TACO BELL
698 S. Whitney Way
Madison, WI

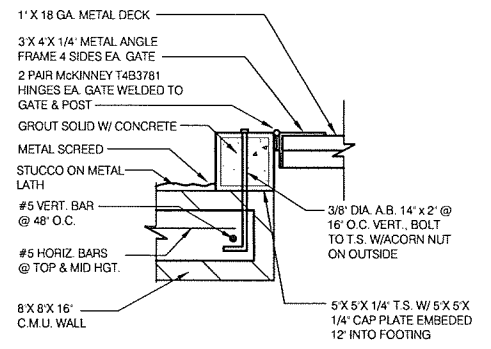


SITE
DETAILS
AC1.0

PLOT DATE: 7-3-13



BOLLARD DETAIL 1/2" = 1'-0" 7



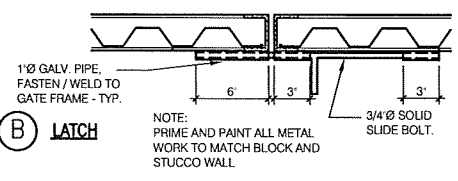
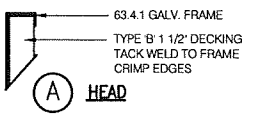
JAMB DETAIL 1 1/2" = 1'-0" 5

GATE NOTES:

- (2) EQUAL (+6'-0") WIDE x 6'-0" HIGH MTL. GATES, TYPE 'B' 1 1/2" DECKING, 22GA. W/T.S. 5 X 5 X .1875 BAR CROSS BRACING WELD AND GRIND SMOOTH. ALL CONNECTIONS, TYP. PRIME AND PAINT COLOR TO MATCH PLASTER.

GATE HARDWARE:

- 1. ALL HARDWARE AND ACCESSORIES SHALL BE HEAVY GALVANIZED.
- 2. **GATE STOP:** MUSHROOM TYPE OR FLUSH PLATE WITH ANCHORS SET IN CONCRETE TO ENGAGE THE CENTER DROP ROD OR PLUNGER BAR.



NOT USED N.T.S. 8

NOTES:

- 1. LOCATION SHALL BE AS DEPICTED ON THE PROJECT'S SITE PLAN (SHEET CO.1).
- 2. AREAS SHALL BE ACCESSIBLE FOR DELIVERY AND COLLECTION.
- 3. GATES SHALL BE CORRUGATED METAL DOORS AND INSTALLED AS APPROVED DURING THE SITE PLAN APPROVAL PROCESS.
- 4. GATE LATCHES SHALL BE OF THE PLUNGER BAR TYPE OR EQUIVALENT AS APPROVED BY THE TACO BELL.
- 5. SEE ATTACHED SPECIFICATIONS, NOTES AND PROCEDURES.

TRASH ENCLOSURE DETAIL MATERIAL SPECIFICATIONS:

- 1. CONCRETE BLOCK: 8" MINIMUM IN SIZE, ASTM C90.
- 2. REINFORCING STEEL: ASTM 615, GRADE 40.
- 3. ACCEPTABLE SOIL TYPES:
 - A. MIN. ALLOWABLE BEARING: 1000 LBS/SQ. FT.
 - B. MIN. LATERAL BEARING: 100 LBS/SQ. FT./FT.
 - C. MAX EXPANSION INDEX: 20.
- 4. CONCRETE: 2000 LBS/SQ. IN. IN 28 DAYS.
- 5. MORTAR: 1:1/4:3 (PORTLAND CEMENT: HYDRATED LIME OR LIME PUTTY: SAND, BY VOLUME) MIXED TO PLASTIC CONSISTENCY. REFER TO UBC TABLE 24-A FOR OTHER TYPES OF CEMENT.
- 6. GROUT: 1:1/10:3 (PORTLAND CEMENT: HYDRATED LIME OR LIME PUTTY: SAND BY VOLUME) MIX TO FLOW WITHOUT SEGREGATION. GROUT MAY CONTAIN 2 PARTS PEA GRAVEL (3/8" MAX. SIZE). MINIMUM COMPRESSIVE STRENGTH: 2000 LBS/SQ. IN. REFER TO UBC TABLE 24-B FOR OTHER TYPES OF CEMENT.

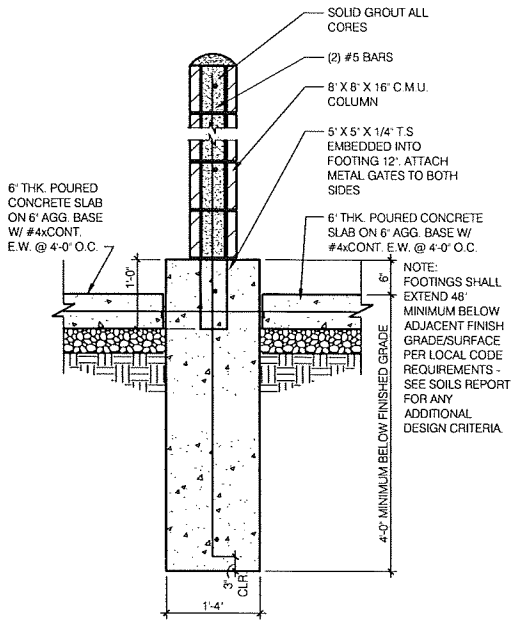
GENERAL NOTES:

- 1. THIS DESIGN IS FOR THE DESIGN CONDITIONS FOR THE PROPOSED SITE AND IS INTENDED TO MEET OR EXCEED ALL APPLICABLE CODES AND ORDINANCES.
- 2. FOOTINGS SHALL BE IN NATURAL SOIL OR CERTIFIED FILL.
- 3. BLOCKS TO BE STAGGERED (RUNNING BOND).
- 4. ALL CELLS CONTAINING REINFORCING STEEL SHALL BE GROUTED SOLID.
- 5. APPROVED GROUT STOPS ARE REQUIRED BELOW HORIZONTAL STEEL IN PARTIALLY GROUTED WALLS. BAGS, NEWSPAPERS, ETC. ARE NOT APPROVED GROUT STOPS.
- 6. INITIAL BED JOINT SHALL BE 1/4" MIN. 1" MAX. SUBSEQUENT BED JOINTS SHALL BE 1/4" MIN., 5/8" MAX.
- 7. VERTICAL CONTINUITY OF CELLS SHALL BE UNOBSTRUCTED. MORTAR PROJECTIONS SHALL NOT EXCEED 1/2" FOR 6" AND LARGER BLOCK. MORTAR DROPPINGS OR OTHER FOREIGN MATTER ARE NOT PERMITTED IN CELLS AND MUST BE REMOVED.
- 8. EXPANSION JOINTS REQUIRED AT 60'-0" MAX. INTERVALS.
- 9. REQUIRED BAR LAPS:
 - A. VERTICAL STEEL: 30 BAR DIAMETERS.
 - B. HORIZONTAL STEEL: 40 BAR DIAMETERS.
 - C. WIRE JOINT REINFORCEMENT IN THE MORTARED BED JOINT: 75 WIRE DIAMETERS OR IN ALTERNATE BED JOINTS OF RUNNING BOND, 54 DIAMETERS PLUS TWICE THE BED JOINT SPACING.
- 10. WHERE HORIZONTAL WIRE JOINT REINFORCEMENT IS REQUIRED OR UTILIZED, IT SHALL BE EQUIVALENT TO TWO 3/16" DIAMETER BARS CONNECTED AT 16" INTERVALS BY NO. 9 GAUGE WELDED WIRE.
- 11. FOR PIPES AND CONDUIT EMBEDDED IN MASONRY, REFER TO SEC. 24-07(g), UBC.
- 12. 3" MIN. COVER REQUIRED FOR REINFORCEMENT IN CONCRETE WHICH IS CAST AGAINST EARTH.

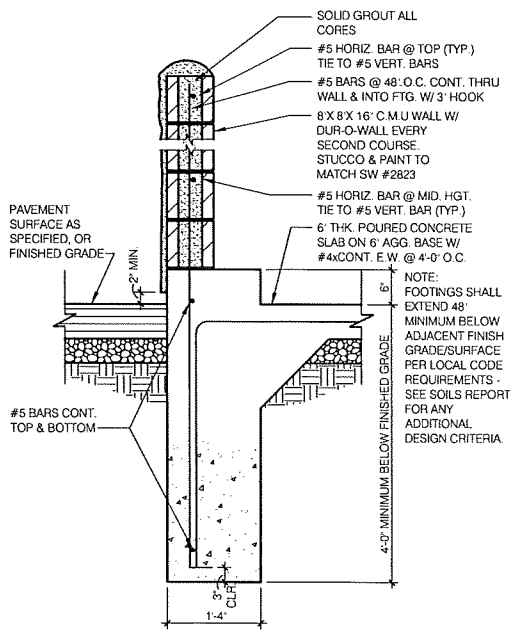
INSPECTION PROCEDURES:

- 1. FOUNDATION: AFTER TRENCHES ARE DUG, STEEL IS TIED IN PLACE AND BEFORE ANY CONCRETE IS POURED.
- 2. PREGROUT: AFTER ALL BLOCKS (EXCEPT CAP) ARE IN PLACE, VERTICAL AND HORIZONTAL STEEL IS IN PLACE, GROUT STOPS (FOR PARTIALLY GROUTED MASONRY) ARE IN PLACE, AND PRIOR TO GROUTING.
- 3. FINAL: AFTER GROUT IS IN PLACE AND PRIOR TO PLACEMENT OF CAP.

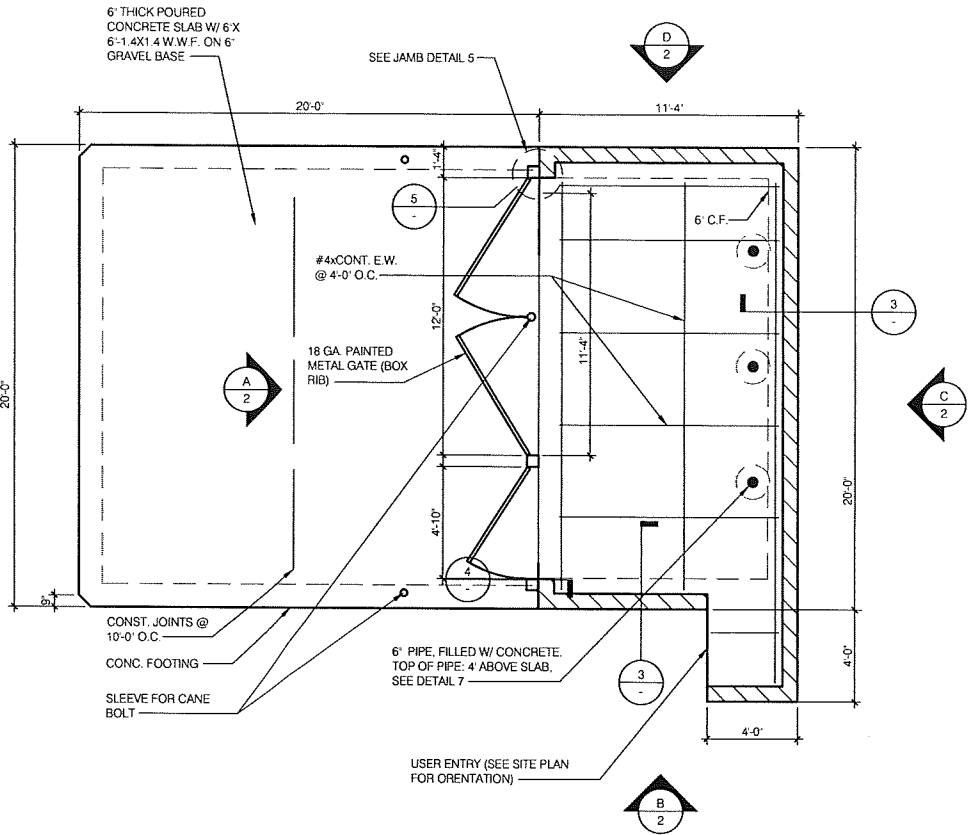
NOT USED N.T.S. 10



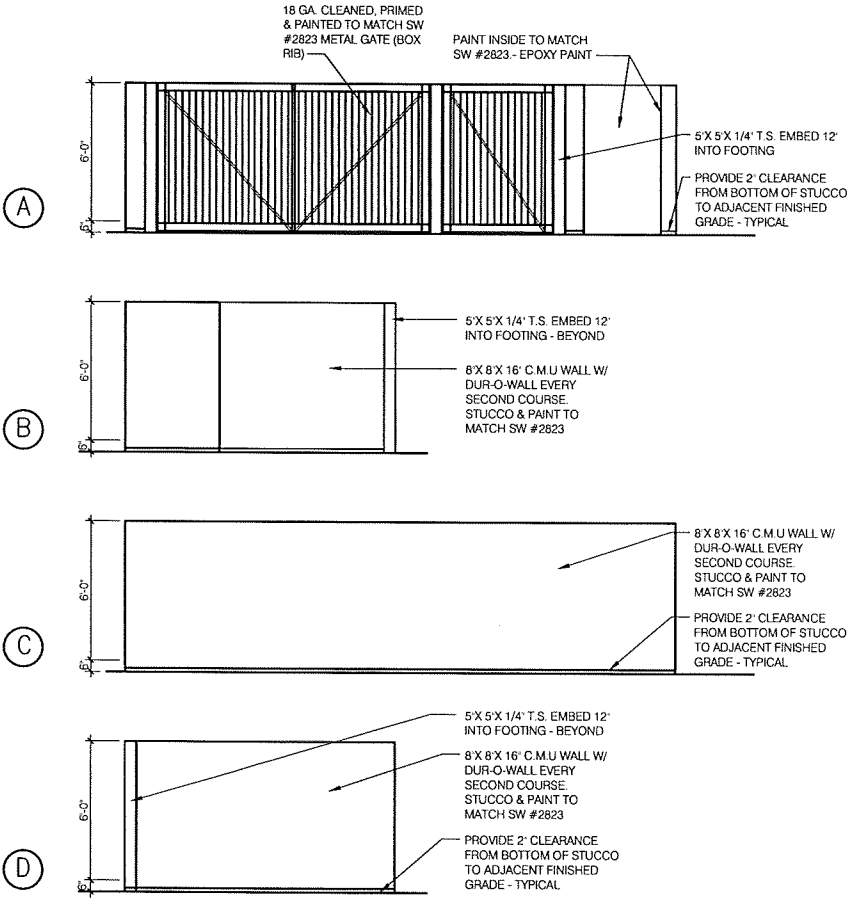
SECTION 3/4" = 1'-0" 4



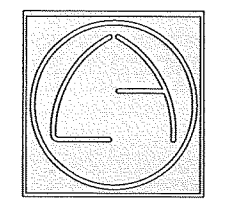
SECTION 3/4" = 1'-0" 3



PLAN VIEW 1/4" = 1'-0" 1



ELEVATIONS 1/4" = 1'-0" 2



L + A ARCHITECTS INC. A.I.A.
 2430 ROCHESTER COURT SUITE 200
 TROY, MICHIGAN 48083
 PHONE (248) 524-4700 FAX (248) 524-9746
 PROJECT NO. T12020

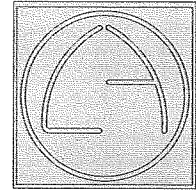
DATE	ISSUE
4-2-2013	INITIAL UDC SUBMITTAL
4-9-2013	REVISED UDC SUBMITTAL
4-22-2013	REVISED PER CITY
6-19-2013	UDC and PC SUBMITTAL
7-8-2013	REV. UDC & PC SUBMITTAL

CONTRACT DATE:	--
BUILDING TYPE:	MED-NI-40
PLAN VERSION:	DEC 12-A
SITE NUMBER:	309441
STORE NUMBER:	--



TRASH ENCLOSURE DETAILS
AC1.2

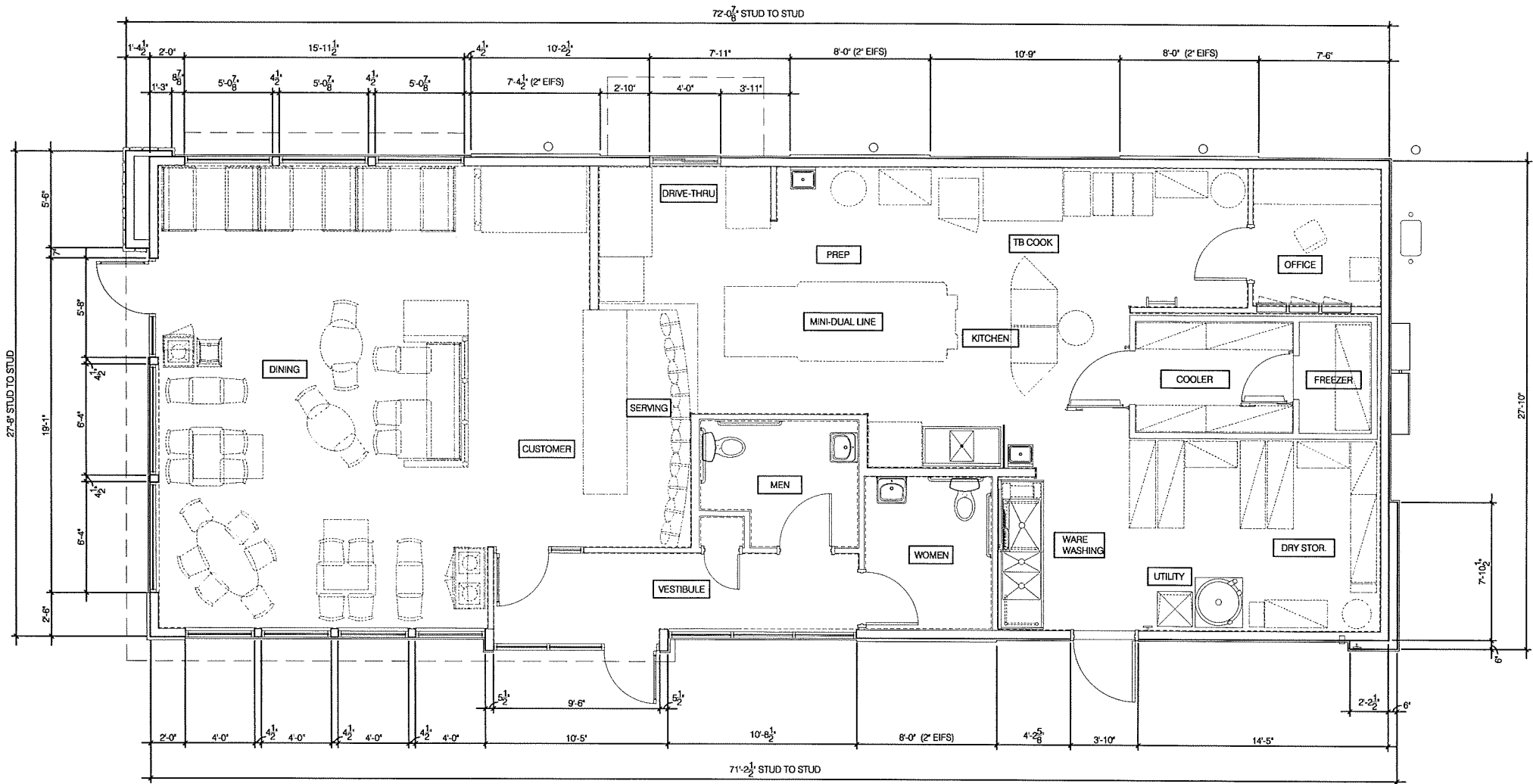
PLOT DATE: 7-3-13



L + A
ARCHITECTS
INC. A.I.A.

2430 ROCHESTER COURT
 SUITE 200
 TROY, MICHIGAN 48063
 PHONE (248) 524-4700 FAX (248) 524-9748

PROJECT NO. T12020



DATE	ISSUE
4-2-2013	INITIAL UDC SUBMITTAL
4-9-2013	REVISED UDC SUBMITTAL
4-22-2013	REVISED PER CITY
6-19-2013	UDC and PC SUBMITTAL
7-8-2013	REV. UDC & PC SUBMITTAL

CONTRACT DATE: --
 BUILDING TYPE: MED-NI-40
 PLAN VERSION: DEC 12-A
 SITE NUMBER: 309441
 STORE NUMBER: --

FLOOR PLAN 1/8" = 1'-0" A

TACO BELL

698 S. Whitney Way
 Madison, WI



MEDIUM40-Ni

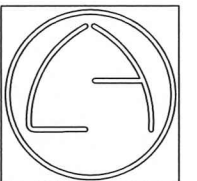
ARCHITECTURAL
 FLOOR
 PLAN

A1.0

PLOT DATE: 7-3-13



SOUTH ELEVATION 1/8" = 1'-0" A



L + A
ARCHITECTS
INC. A.I.A.
 2430 ROCHESTER COURT
 SUITE 200
 TROY, MICHIGAN 48063
 PHONE FAX
 (248) 524-4700 (248) 524-9746

PROJECT NO. T12020

DATE ISSUE

4-2-2013	INITIAL UDC SUBMITTAL
4-9-2013	REVISED UDC SUBMITTAL
4-22-2013	REVISED PER CITY
6-19-2013	UDC and PC SUBMITTAL
7-8-2013	REV. UDC & PC SUBMITTAL

CONTRACT DATE: --
 BUILDING TYPE: MED-NI-40
 PLAN VERSION: DEC 12-A
 SITE NUMBER: 309441
 STORE NUMBER: --

TACO BELL

698 S. Whitney Way
 Madison, WI



MEDIUM40-Ni

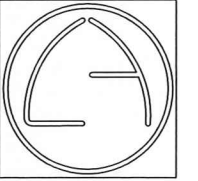
ARCHITECTURAL
 EXTERIOR
 ELEVATIONS

A4.0

PLOT DATE: 7-3-13

SYMBOL	AREA	MANUFACTURER	COLOR	ALTERNATE MFR.	ALTERNATE COLOR
1	MAIN BUILDING COLOR	SHERWIN WILLIAMS	SW 6122 'CAMEL BACK'	LOTUSAN	NA08-0011
2	WALL COLOR BEHIND SCREEN WALL	SHERWIN WILLIAMS	SW 6831 'CLEMATIS'		
3	ACCENT COLOR	SHERWIN WILLIAMS	SW 2823 'ROCKWOOD CLAY'	LOTUSAN	NA08-0010
4	SLAT WALL AND VALANCE COLOR	VENDOR	SW 7034 'STATUS BRONZE' (EQUAL)		
5	PARAPET CAP COLOR	DUROLAST	MEDIUM BRONZE (FACTORY FINISH)	SHERWIN WILLIAMS	SW 7069 'IRON ORE'
6	STONE WALL	BORAL - VERSA STONE	TIGHT CUT - ' PLUM CREEK'		
7	STOREFRONT WINDOWS	TBD	' DARK BRONZE'		
8	PIPE BOLLARDS	STREET SMART	YELLOW - 1/4" THICK PLASTIC COVER (US.POSTMAN.COM) OR EQUAL		
9	PARAPET BACK ROOFING	DUROLAST	THE COLOR SHALL BE FACTORY COLORED 'TAN.' EQUAL ALTERNATE ALLOWED.		
10	BRICK WALL	BORAL - THIN BRICK	' TUSCAN BLEND '		

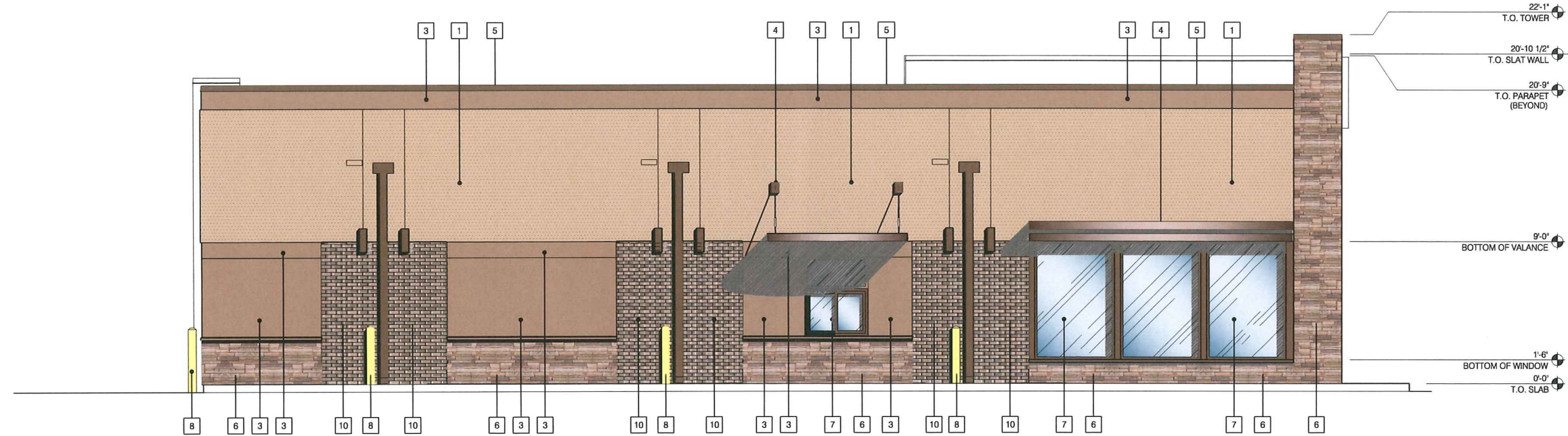
EXTERIOR FINISH SCHEDULE B



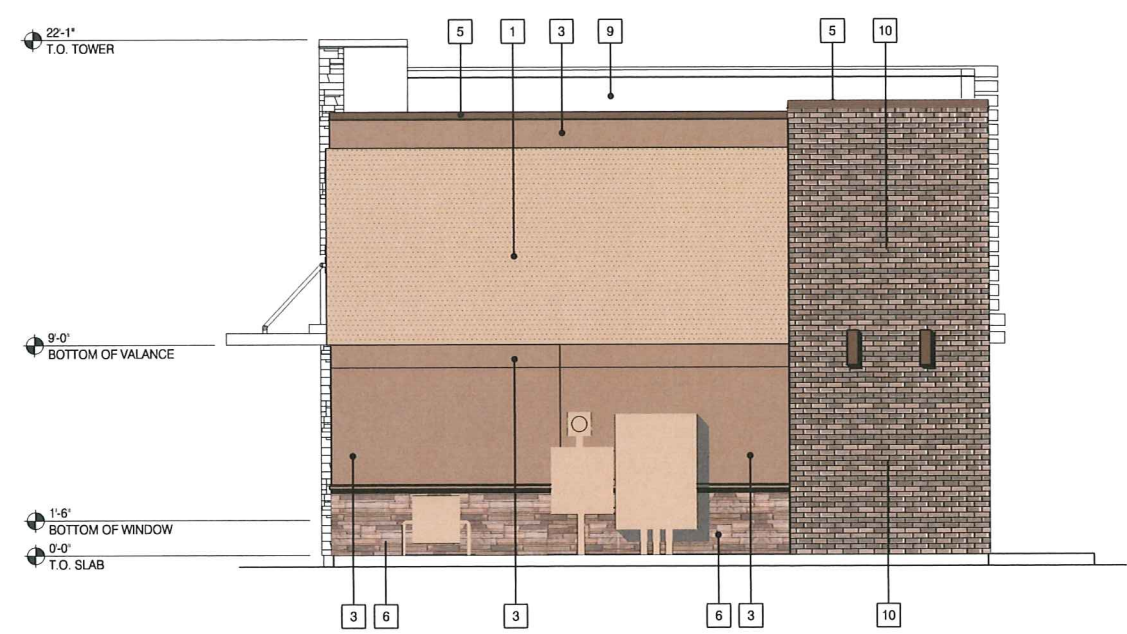
L + A
ARCHITECTS
INC. A.I.A.

2430 ROCHESTER COURT
 SUITE 200
 TROY, MICHIGAN 48083
 PHONE (248) 524-4700 FAX (248) 524-9746

PROJECT NO. T12020



NORTH ELEVATION 1/8"=1'-0" A



WEST ELEVATION 1/8"=1'-0" C



EAST ELEVATION 1/8"=1'-0" B

DATE ISSUE

DATE	ISSUE
4-2-2013	INITIAL UDC SUBMITTAL
4-9-2013	REVISED UDC SUBMITTAL
4-22-2013	REVISED PER CITY
6-19-2013	UDC and PC SUBMITTAL
7-8-2013	REV. UDC & PC SUBMITTAL

CONTRACT DATE: --
 BUILDING TYPE: MED-NI-40
 PLAN VERSION: DEC 12-A
 SITE NUMBER: 309441
 STORE NUMBER: --

TACO BELL

698 S. Whitney Way
 Madison, WI



MEDIUM40-Ni

ARCHITECTURAL
 EXTERIOR
 ELEVATIONS

A4.1

PLOT DATE: 7-3-13



L + A
ARCHITECTS
INC. A.I.A.

2430 ROCHESTER COURT
SUITE 200
TROY, MICHIGAN 48063
PHONE FAX
(248) 524-4700 (248) 524-9746

PROJECT NO. T12020

DATE	ISSUE
4-2-2013	INITIAL UDC SUBMITTAL
4-9-2013	REVISED UDC SUBMITTAL
4-22-2013	REVISED PER CITY
6-19-2013	UDC and PC SUBMITTAL
7-8-2013	REV. UDC & PC SUBMITTAL

4-2-2013	INITIAL UDC SUBMITTAL
4-9-2013	REVISED UDC SUBMITTAL
4-22-2013	REVISED PER CITY
6-19-2013	UDC and PC SUBMITTAL
7-8-2013	REV. UDC & PC SUBMITTAL

CONTRACT DATE: --
BUILDING TYPE: MED-NI-40
PLAN VERSION: DEC 12-A
SITE NUMBER: 309441
STORE NUMBER: --

TACO BELL

698 S. Whitney Way
Madison, WI



**GRADING &
EROSION
CONTROL PLAN**

C 1.0

PLOT DATE: 7-8-13

LEGEND (PROPOSED)

--- PROPOSED PROPERTY LINE
- - - EXISTING PROPERTY LINE
- - - STORM SEWER
- - - ASPHALTIC PAVEMENT
- - - CONCRETE PAVEMENT

SPOT ELEVATION
EP - EDGE OF PAVEMENT
FFE - FINISHED FLOOR ELEVATION
TC - TOP OF CURB
SW - SIDEWALK
FG - FINAL GRADE
RIM - STRUCTURE RIM

GENERAL NOTES

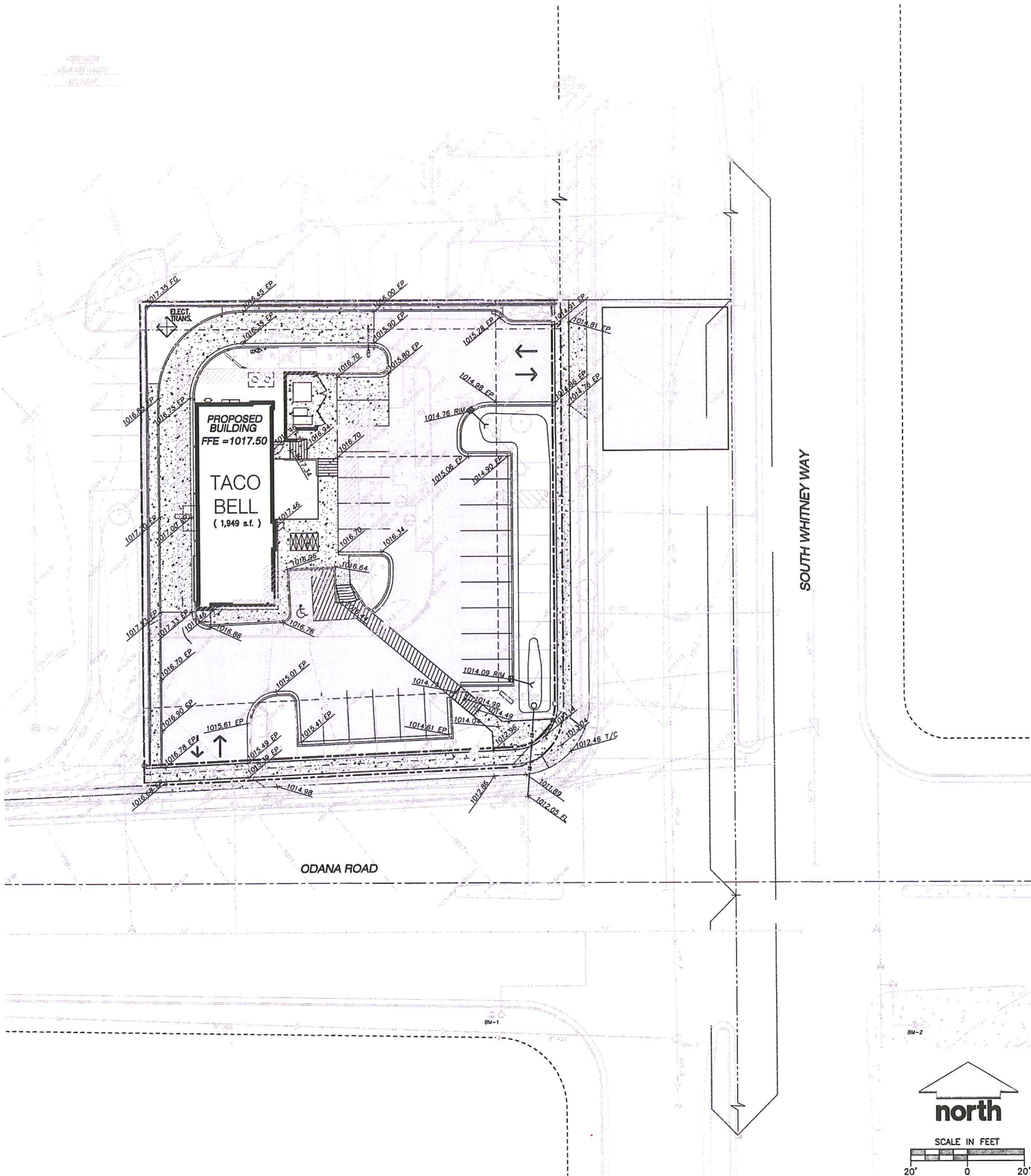
1. SURVEY CONDITIONS SHOWN BASED ON FIELD WORK PERFORMED BY JSD PROFESSIONAL SERVICES THE WEEK OF MARCH 24, 2013.
2. ALL WORK IN THE ROW SHALL BE IN ACCORDANCE WITH THE CITY OF MADISON STANDARD SPECIFICATIONS FOR PUBLIC WORKS CONSTRUCTION. WORK IN ROW AND WITHIN PUBLIC EASEMENTS SHOWN ON THIS PLAN IS FOR GRAPHIC PURPOSES ONLY.
3. JSD SHALL BE HELD HARMLESS AND DOES NOT WARRANT ANY DEVIATIONS BY THE OWNER/CONTRACTOR FROM THE APPROVED CONSTRUCTION PLANS THAT MAY RESULT IN DISCIPLINARY ACTIONS BY ANY OR ALL REGULATORY AGENCIES.

CONSTRUCTION SITE EROSION CONTROL REQUIREMENTS

1. ALL EROSION AND SEDIMENT CONTROL PRACTICES SHALL BE DESIGNED AND IMPLEMENTED IN ACCORDANCE WITH THE CURRENT DEPARTMENT OF NATURAL RESOURCES EROSION AND SEDIMENT CONTROL TECHNICAL STANDARDS WHICH ARE AVAILABLE AT: <http://www.dnr.state.wi.us/runoff/stormwater/techstda.htm>
2. INSTALL EROSION CONTROL MEASURES PRIOR TO ANY SITE WORK, INCLUDING GRADING OR DISTURBANCE OF EXISTING SURFACE MATERIALS AS SHOWN ON PLAN. MODIFICATIONS TO SEDIMENT CONTROL DESIGN MAY BE CONDUCTED TO MEET UNFORESEEN FIELD CONDITIONS IF MODIFICATIONS CONFORM TO WDNR TECHNICAL STANDARDS.
3. INSPECTIONS AND MAINTENANCE OF ALL EROSION CONTROL MEASURES SHALL BE ROUTINE (ONCE PER WEEK MINIMUM) TO ENSURE PROPER FUNCTION OF EROSION CONTROLS AT ALL TIMES. EROSION CONTROL MEASURES ARE TO BE IN WORKING ORDER AT THE END OF EACH WORK DAY. ONLINE REPORTING OF INSPECTIONS AND MAINTENANCE IS REQUIRED TO BE SUBMITTED TO THE CITY OF MADISON.
4. INSPECT EROSION CONTROL MEASURES AFTER EACH 1/2" OR GREATER RAINFALL. REPAIR ANY DAMAGE OBSERVED DURING THE INSPECTION.
5. EROSION CONTROL MEASURES SHALL BE REMOVED ONLY AFTER SITE CONSTRUCTION IS COMPLETE WITH ALL SOIL SURFACES HAVING AN ESTABLISHED VEGETATIVE COVER.
6. INSTALL A TRACKING PAD, 50' LONG AND NO LESS THAN 12" THICK BY USE OF 3" CLEAR STONE. TRACKING PADS ARE TO BE MAINTAINED BY THE CONTRACTOR IN A CONDITION WHICH WILL PREVENT THE TRACKING OF MUD OR DRY SEDIMENT ONTO THE ADJACENT PUBLIC STREETS AFTER EACH WORKING DAY OR MORE FREQUENTLY AS REQUIRED BY THE CITY OF MADISON.
7. INSTALL EROSION CONTROLS ON THE DOWNSTREAM SIDE OF STOCKPILES AND PROVIDE TEMPORARY SEEDING ON STOCKPILES WHICH ARE TO REMAIN IN PLACE FOR MORE THAN 7 DAYS.
8. INSTALL CHECK DAMS WITHIN DRAINAGE DITCHES AND IN FRONT OF SILT FENCING IN ANY LOW AREA ALL IN ACCORDANCE WITH WDNR TECHNICAL STANDARDS.
9. EROSION CONTROL FOR UTILITY CONSTRUCTION (STORM SEWER, SANITARY SEWER, WATER MAIN, ETC.):
A. PLACE EXCAVATED TRENCH MATERIAL ON THE HIGH SIDE OF THE TRENCH.
B. BACKFILL, COMPACT, AND STABILIZE THE TRENCH IMMEDIATELY AFTER PIPE CONSTRUCTION.
C. DISCHARGE TRENCH WATER INTO A SEDIMENTATION BASIN OR FILTERING TANK IN ACCORDANCE WITH THE DEWATERING TECHNICAL STANDARD NO. 1061 PRIOR TO RELEASE INTO THE STORM SEWER, RECEIVING STREAM, OR DRAINAGE DITCH.
10. INSTALL TYPE D INLET PROTECTION AROUND ALL STORM SEWER INLETS AND CATCH BASINS THAT MAY RECEIVE RUNOFF FROM AREAS UNDER CONSTRUCTION. REFER TO CITY OF MADISON STANDARD SPECIFICATIONS FOR DETAILS.
11. APPLY ANIONIC POLYMER TO DISTURBED AREAS IF EROSION BECOMES PROBLEMATIC.
12. ADDITIONAL EROSION CONTROL MEASURES, AS REQUESTED BY STATE INSPECTORS, LOCAL INSPECTORS, AND/OR ENGINEER SHALL BE INSTALLED WITHIN 24 HOURS OF REQUEST.
13. ALL SLOPES EXCEEDING 5:1 (20%) AND DRAINAGE SWALES SHALL BE STABILIZED WITH CLASS I, TYPE B EROSION MATTING OR APPLICATION OF A WDOT APPROVED POLYMER SOIL STABILIZATION TREATMENT OR A COMBINATION THEREOF, AS REQUIRED. CONTRACTOR SHALL PROVIDE PRODUCT SPECIFICATIONS TO PROJECT ENGINEER FOR APPROVAL.
14. CONTRACTOR/OWNER SHALL FILE A NOTICE OF TERMINATION UPON VEGETATIVE STABILIZATION AND/OR PROPERTY SALE IN ACCORDANCE WITH WDNR AND WSPS REQUIREMENTS.
15. CONTRACTOR SHALL TAKE ALL NECESSARY STEPS TO CONTROL DUST ARISING FROM CONSTRUCTION OPERATIONS. REFER TO WDNR TECHNICAL STANDARD 1068.
16. CONTRACTOR TO PROVIDE SOLID LD OR METAL PLATE ON ALL OPEN MANHOLES DURING CONSTRUCTION TO MINIMIZE SEDIMENT FROM ENTERING THE STORM SEWER SYSTEM.

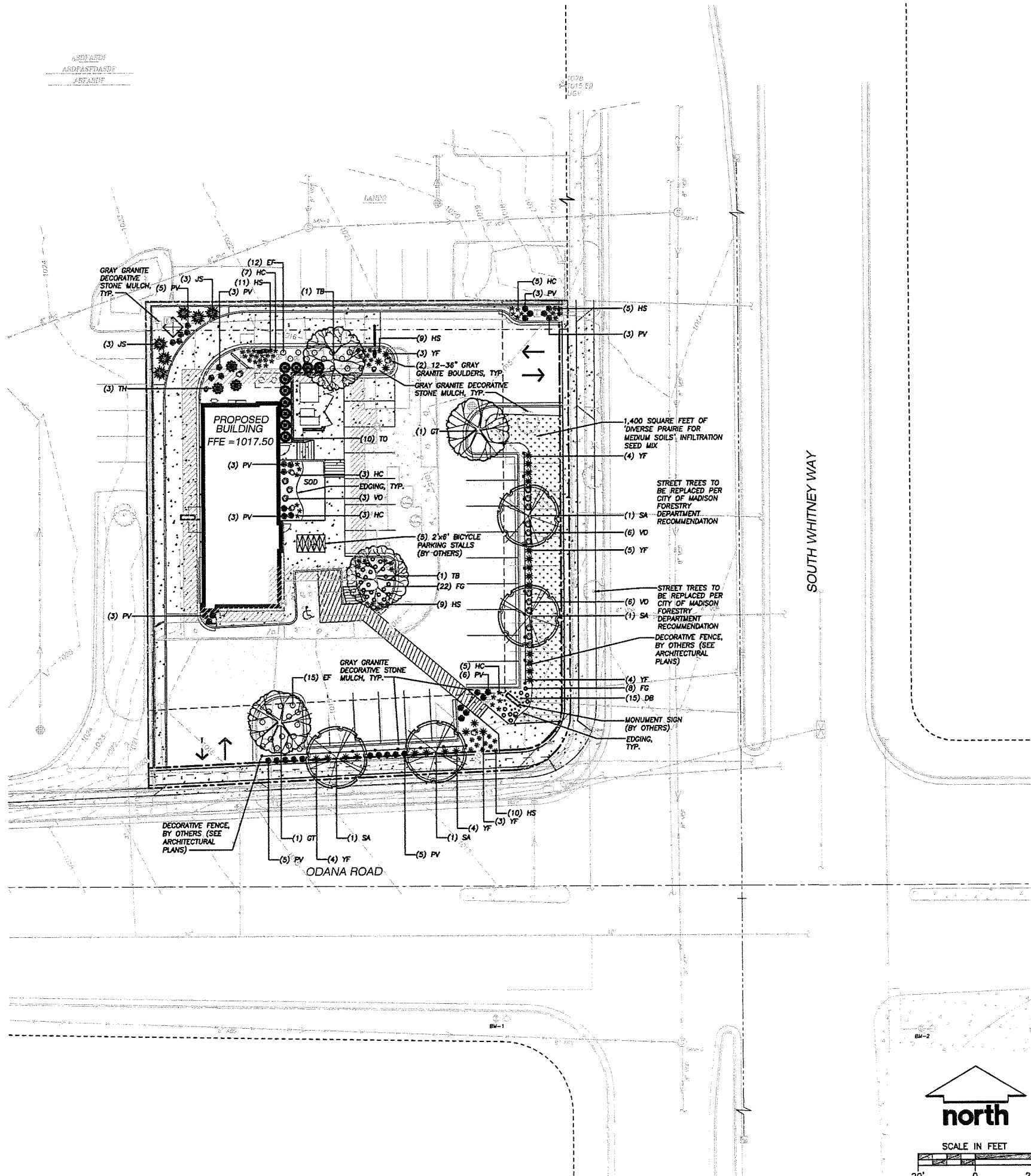
GRADING AND SEEDING NOTES

1. ALL DISTURBED AREAS SHALL BE SEEDED AND MULCHED IMMEDIATELY FOLLOWING GRADING ACTIVITIES. SEED MIX TO BE IN ACCORDANCE WITH LANDSCAPE PLAN.
2. ALL PROPOSED GRADES SHOWN ARE FINISHED GRADES. CONTRACTOR SHALL VERIFY ALL GRADES, MAKE SURE ALL AREAS DRAIN PROPERLY AND SHALL REPORT ANY DISCREPANCIES TO THE ENGINEER PRIOR TO CONSTRUCTION.
3. CONTRACTOR SHALL PROTECT ADJACENT PROPERTIES WITH SILT FENCING FOR EROSION CONTROL UNTIL CONSTRUCTION IS COMPLETED AND NOTICE OF TERMINATION FILED.
4. CONTRACTOR SHALL CHISEL-PLow OR DEEP TILL WITH DOUBLE TIMES THE STORMWATER MANAGEMENT FACILITY JUST PRIOR TO SEEDING AND MULCHING TO PROMOTE INFILTRATION. THIS MUST BE VERIFIED BY THE ENGINEER AS PART OF THE AS-BUILT CERTIFICATION.
5. CONTRACTOR SHALL WATER ALL NEWLY SEEDING AREAS DURING THE SUMMER MONTHS WHENEVER THERE IS A 7 DAY LAPSE WITH NO SIGNIFICANT RAINFALL.
6. CONTRACTOR TO DEEP TILL ALL COMPACTED PERVIOUS SURFACES PRIOR TO SEEDING AND MULCHING. THIS MUST BE VERIFIED BY THE ENGINEER AS PART OF THE AS-BUILT CERTIFICATION.
7. THE CONTRACTOR SHALL NOTIFY THE CITY OF MADISON TWO (2) WORKING DAYS IN ADVANCE OF ANY SOIL DISTURBING ACTIVITY.

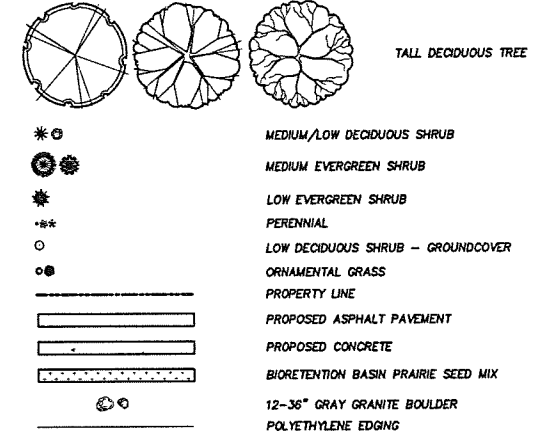


File: I:\2013\135585\dwg\135585 Civil.dwg Layout: C 1.0 User: smckinley Plotdate: Jul 08, 2013 - 3:04pm Xref:

ASDFGSH
ASDFASDFASDF
ASDFASDF



LEGEND (PROPOSED)



GENERAL NOTES

- REFER TO THE EXISTING CONDITIONS SURVEY DATED 03-24-2013, FOR EXISTING CONDITION NOTES AND LEGEND.
- REFER TO CIVIL PLANS FOR PROPOSED PRELIMINARY GRADING, EROSION CONTROL AND UTILITY PLANS.
- REFER TO SHEET L 2.0 FOR LANDSCAPE DETAILS AND SPECIFICATIONS.
- IF ANY ERRORS, DISCREPANCIES OR DIMENSIONS WITH THIS PLAN BECOME APPARENT, IT SHALL BE BROUGHT TO THE ATTENTION OF THE ENGINEER PRIOR TO CONSTRUCTION.
- CONTRACTOR SHALL OBTAIN APPROPRIATE PERMITS FOR STREET OPENINGS AND TO WORK WITHIN ANY CITY OWNED LANDS.
- ALL WORK IN THE ROW OR PUBLIC EASEMENTS SHALL BE IN ACCORDANCE WITH THE CITY OF MADISON REQUIREMENTS.
- NO SITE GRADING OUTSIDE OF PROPOSED LIMITS OF DISTURBANCE.

LANDSCAPE PLANT SCHEDULE

SYM	QTY	COMMON NAME	BOTANICAL NAME	SIZE	ROOT	LS POINTS	EXTENSION	
TALL DECIDUOUS TREES (CANOPY TREES)								
DT	2	Boyce Thompson Elm	ULMUS THOMPSONII	2 1/2" Cal	BAR	35	70	
TE	4	Moreau Magnolia	MAGNOLIA MOREAU	2 1/2" Cal	BAR	35	140	
TE	2	Buckeye Linden	TILIA AMERICANA	2 1/2" Cal	BAR	35	70	
MEDIUM DECIDUOUS SHRUBS								
SH	27	Adonis vernalis	ADONIS VERNALIS	10" Min. Ht	#3 Cont.	2	54	
LOW DECIDUOUS SHRUBS								
LD	18	Dark European Clematis	CLEMATIS DARK EUROPEAN	10" Min. Ht	#3 Cont.	2	36	
MEDIUM EVERGREEN SHRUBS								
ME	10	Baker's Dogwood	DOGWOOD BAKER'S	10" Min. Ht	#3 Cont.	2	20	
LOW EVERGREEN SHRUBS								
LES	2	Saxifrage	SAXIFRAGE	10" Min. Ht	#3 Cont.	2	10	
PERENNIALS								
PE	18	Blue Star Hyacinth	HYACINTH BLUE STAR	2-4" Ht	#1 Cont.	0	0	
PE	48	Blue Star Day Lily	HEMEROCALLIS BLUE STAR	10-12" Ht	#1 Cont.	0	0	
PE	22	Emerald Candy Day Lily	HEMEROCALLIS EMERALD CANDY	10-12" Ht	#1 Cont.	0	0	
LOW DECIDUOUS SHRUBS - GROUNDCOVER								
LDG	27	Purple Heart	VIOLA PURPLE HEART	10" Min. Ht	#3 Cont.	2	54	
ORNAMENTAL GRASSES								
OG	18	Blue Fescue	FESTUCA BLUE	4-6" Min. Ht	#2 Cont.	2	36	
OG	30	Shenandoah Switch Grass	PANICUM SHENANDOAH	10" Min. Ht	#2 Cont.	2	72	
							TOTAL POINTS =	613

CITY OF MADISON LANDSCAPE WORKSHEET
Section 28.142 Madison General Ordinance

Project Location: **698 S. WHITNEY WAY, MADISON, WI**
Name of Project: **TACO BELL**
Owner/Contact: _____
Contact Phone: _____ Contact Email: _____

Landscape Calculations and Distribution
Required landscaped area shall be calculated based upon the total developed area of the property. Developed area is defined as all parts of the site that are not left in a natural state within a single contiguous boundary, including building footprints, parking and loading areas, driveways, internal roads, paths, and outdoor utility areas. Developed area does not include the land within required setbacks and lateral areas on the same property that are left undisturbed.

(a) One (1) landscape unit shall be provided for each three hundred (300) square feet of developed area, with the exception of the (b) and (c) districts as specified in (b) below.
Total square footage of developed area: **18,476**
Developed area divided by three hundred (300) square feet = **61.59** Landscape Units

(b) Within the Industrial - Limited (I) and Industrial - General (IG) districts, one (1) landscape unit shall be provided for every six hundred (600) square feet of developed area.
Total square footage of developed area: _____
Developed area divided by six hundred (600) square feet = _____ Landscape Units

(c) One landscape unit consists of five (5) landscape points. Landscape points are calculated as shown in the following table:
Landscape units multiplied by five (5) landscape points = **310** Total Points Required

Tabulation of Points and Credits
The table below indicates the quantity and points for all existing and proposed landscape elements. Calculations yielding a fraction up to one-half (1/2) are rounded down to the nearest whole number; fractions of more than one-half (1/2) shall be rounded up.

Plant Type/Element	Minimum Size at Installation	Points	Credit/Existing Landscaping		New/Proposed Landscaping	
			Quantity	Points Achieved	Quantity	Points Achieved
Deciduous tree	2 1/2" caliper	35				
Ornamental tree	1 1/2" caliper	15				
Evergreen tree	7 feet tall	15				
Shrub, deciduous	18" or 3 gallon container size	3			69	138
Shrub, evergreen	18" or 3 gallon container size	3			19	57
Ornamental grasses	18" or 3 gallon container size	2			69	138
Decorative fence or wall	4 feet tall	1				
Sub Total						465
Total Number of Points Provided = 613						

PARKING LOT SITE INFORMATION BLOCK

SITE ADDRESS: 698 S. WHITNEY WAY
SITE ACREAGE: 23,383 SQ. FT. OR 0.54 ACRES
NUMBER OF BUILDING STORIES (ABOVE GRADE): 1 STORY
BUILDING HEIGHT: N/A
TYPE OF CONSTRUCTION: N/A
TOTAL SQUARE FOOTAGE OF BUILDING: 1,949 SQ. FT.

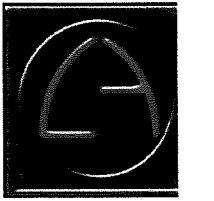
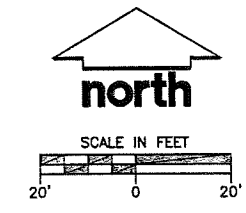
USE OF PROPERTY: RESTAURANT
GROSS SQUARE FEET OF OFFICE: N/A
GROSS SQUARE FEET OF RETAIL: N/A
NUMBER OF EMPLOYEES IN WAREHOUSE: N/A
NUMBER OF EMPLOYEES IN PRODUCTION AREA: XX
CAPACITY OF RESTAURANT/PLACE OF ASSEMBLY:

NUMBER OF PROPOSED BICYCLE STALLS SHOWN: 5 STALLS

NUMBER OF PARKING STALLS SHOWN:
SMALL CAR: N/A
LARGE CAR: 18 PARKING STALLS
ACCESSIBLE: 1 PARKING STALL
TOTAL: 19 PARKING STALLS

DEVELOPMENT FRONTAGE LANDSCAPING:
286 LINEAR FEET OF FRONTAGE
1 TREE PER 30' LINEAR FEET OF FRONTAGE
10 TREES REQUIRED, 4 TREES PROVIDED
VARIANCE REQUESTED DUE TO SITE CONSTRAINTS
-URBAN INTENSITY OF SITE
-COMMERCIAL ACCESS ENTRY LOCATIONS

INTERIOR PARKING LOT LANDSCAPING:
TOTAL DEVELOPED AREA: 18,476 SQ. FT.
OPEN SPACE RATIO: .210
RE-DEVELOPMENT PARKING AREA: 12,800 SQ. FT.
LANDSCAPE AREA REQUIRED (5X) = 640 SQ. FT.
1 TREE PER 160 SQ. FT. = 4 TREES REQUIRED
4 PARKING LOT TREES PROVIDED



L + A ARCHITECTS INC. A.I.A.
2430 ROCHESTER COURT SUITE 200
TROY, MICHIGAN 4806
PHONE: (248) 524-4700 FAX: (248) 524-9770
PROJECT NO. T1202

DATE	ISSUE
4-2-2013	INITIAL UDC SUBMIT
4-9-2013	REVISED UDC SUBMIT
4-22-2013	REVISED PER
6-19-2013	UDC and PC SUBMIT
7-08-2013	UDC and PC SUBMIT

CONTRACT DATE: _____
BUILDING TYPE: MED-N
PLAN VERSION: DEC 1
SITE NUMBER: 309
STORE NUMBER: _____

TACO BELL
698 S. Whitney Way
Madison, WI



LANDSCAPE PLAN

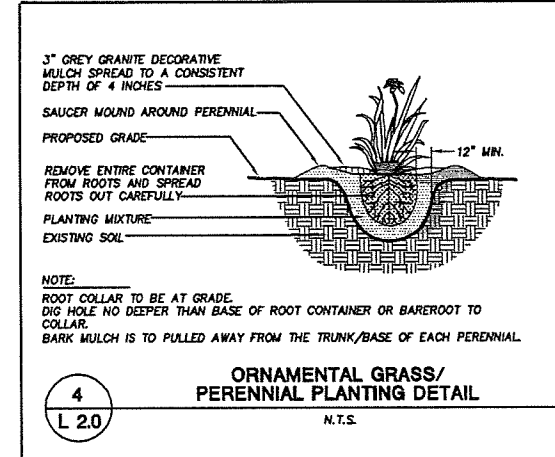
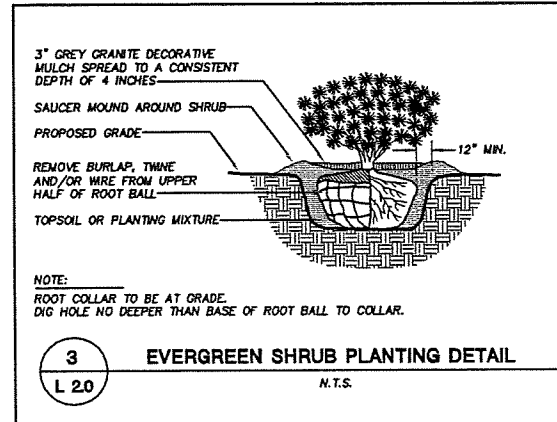
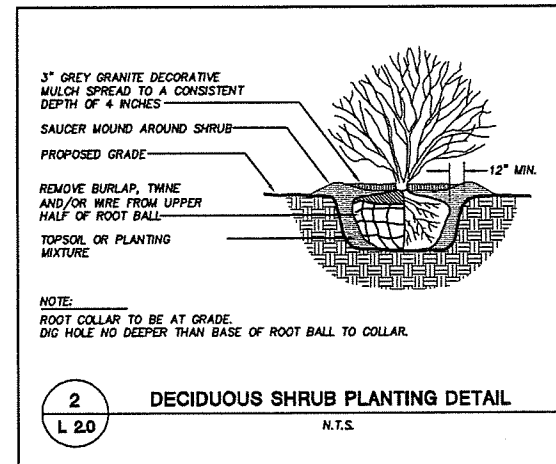
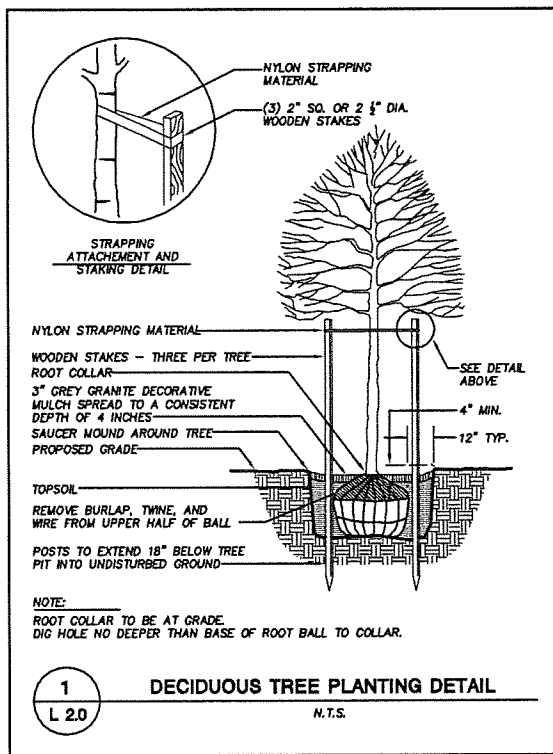
L 1.0

PLOT DATE: 4/4

L + A ARCHITECTS INC. A.I.A.
PREPARED FOR
L+A ARCHITECTS, INC.
2430 ROCHESTER COURT, STE. 200
TROY, MI 48063

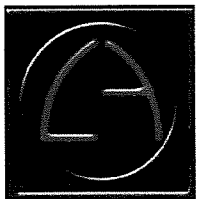
CALL DIGGERS HOTLINE
1-800-242-8511 TOLL FREE

THE INFORMATION SHOWN ON THIS PLANING CONCERNING TYPE AND LOCATION OF UNDERGROUND UTILITIES IS NOT GUARANTEED. THE USER IS RESPONSIBLE FOR VERIFYING THE LOCATION AND DEPTH OF ALL UTILITIES PRIOR TO ANY CONSTRUCTION. THE USER SHALL BE RESPONSIBLE FOR OBTAINING ALL NECESSARY PERMITS AND APPROVALS FROM ALL APPLICABLE AGENCIES AND AUTHORITIES. THE USER SHALL BE RESPONSIBLE FOR OBTAINING ALL NECESSARY PERMITS AND APPROVALS FROM ALL APPLICABLE AGENCIES AND AUTHORITIES. THE USER SHALL BE RESPONSIBLE FOR OBTAINING ALL NECESSARY PERMITS AND APPROVALS FROM ALL APPLICABLE AGENCIES AND AUTHORITIES.



LANDSCAPE NOTES AND SPECIFICATIONS

- GENERAL:** JSD SHALL BE HELD HARMLESS AND DOES NOT WARRANT ANY DEVIATIONS BY THE OWNER/CONTRACTOR FROM THE APPROVED CONSTRUCTION PLANS THAT MAY RESULT IN DISCIPLINARY ACTIONS BY ANY OR ALL REGULATORY AGENCIES. LOCATE ALL UTILITIES PRIOR TO CONSTRUCTION. THE CONTRACTOR IS RESPONSIBLE FOR REPAIRING ANY DAMAGE DONE TO UTILITIES. CONTRACTOR MUST CALL 1-800-382-5544 FOR UTILITY LOCATIONS AT LEAST THREE DAYS PRIOR TO DIGGING. HAND DIG AND INSTALL ALL PLANTS THAT ARE NEAR EXISTING UTILITIES. PROTECT PREVIOUSLY INSTALLED WORK OF OTHER TRADES. CONTRACTOR IS RESPONSIBLE FOR STAKING THE PLANT MATERIALS FOR REVIEW BY OWNER PRIOR TO DIGGING AND PLACEMENT. THE LANDSCAPE CONTRACTOR SHALL COORDINATE ALL FINE GRADING AND RESTORATION WITH THE GRADING CONTRACTOR.
- DELIVERY AND HANDLING:** DO NOT DELIVER MORE PLANT MATERIALS THAN CAN BE PLANTED IN ONE DAY. DELIVER PLANTS WITH LEGIBLE IDENTIFICATION LABELS. PROTECT PLANTS DURING DELIVERY AND DO NOT PRUNE PRIOR TO DELIVERY. ALL TREES AND SHRUBS SHALL BE PLANTED ON THE DAY OF DELIVERY; IF THIS IS NOT POSSIBLE, PROTECT THAT STOCK NOT PLANTED BY STORING STOCK IN A SHADED AREA PROTECTING THE ROOT MASS WITH WET SOIL, MOSS OR OTHER SUITABLE MEDIA AND KEEPING WELL WATERED. DO NOT REMOVE CONTAINER GROWN STOCK FROM CONTAINERS BEFORE TIME OF PLANTING. DO NOT PICK UP CONTAINER OR BALLED PLANTS BY STEM OR ROOTS. ALL PLANTS SHALL BE LIFTED AND HANDLED FROM THE BOTTOM OF THE BALL. PERFORM ACTUAL PLANTING ONLY WHEN WEATHER AND SOIL CONDITIONS ARE SUITABLE IN ACCORDANCE WITH LOCALLY ACCEPTED PRACTICES.
- GUARANTEE:** THE CONTRACTOR SHALL GUARANTEE ALL PLANTS THROUGH ONE (1) YEAR AFTER ACCEPTANCE BY OWNER. PLANTS SHALL BE ALIVE AND IN GOOD HEALTHY AND FLOURISHING CONDITION AT THE END OF THE GUARANTEE PERIOD. THE CONTRACTOR SHALL REPLACE WITHOUT COST TO THE OWNER ANY PLANTS THAT ARE DEAD OR NOT IN A VIGOROUS THRIVING CONDITION. REPLACEMENT PLANTS SHALL BE OF THE SAME KIND AND SIZE AS ORIGINALLY SPECIFIED UNLESS OTHERWISE DIRECTED BY OWNER. RESTORE BEDS AS NECESSARY FOLLOWING PLANT REPLACEMENT, INCLUDING BUT NOT LIMITED TO BEDDING, EDGING, MULCH, SOIL, ETC. REPAIR DAMAGE TO OTHER PLANTS OR LAWNS DURING PLANT REPLACEMENT AT NO COST TO OWNER. CONTRACTOR SHALL PROVIDE A TWO (2)-YEAR STRAIGHTENING GUARANTEE FOR ALL TREES.
- MATERIALS - PLANTS:** ALL PLANTS SHALL CONFORM TO THE AMERICAN STANDARD FOR NURSERY STOCK ANSI Z60.1-2004. PLANTS SHALL BE TRUE TO SPECIES, VARIETY AND SIZE SPECIFIED AND NURSERY GROWN IN ACCORDANCE WITH GOOD HORTICULTURAL PRACTICES UNDER CLIMATIC CONDITIONS SIMILAR TO THOSE IN THE LOCALITY OF THE PROJECT FOR AT LEAST 2 YEARS. PLANTS SHALL BE FRESHLY DUG (DURING THE MOST RECENT FAVORABLE HARVEST SEASON). PLANTS SHALL BE SO TRAINED IN DEVELOPMENT AND APPEARANCE AS TO BE UNQUESTIONABLY SUPERIOR IN FORM, COMPACTNESS, AND SYMMETRY. PLANTS SHALL BE SOUND, HEALTHY, VIGOROUS, WELL BRANCHED AND DENSELY FOLIATED WHEN IN LEAF, AND FREE OF DISEASE AND INSECTS (ADULT EGGS, PUPAE OR LARVAE). THEY SHALL HAVE HEALTHY, WELL-DEVELOPED ROOT SYSTEMS AND SHALL BE FREE FROM PHYSICAL DAMAGE OR OTHER CONDITIONS THAT WOULD PREVENT THRIVING GROWTH. PLANTS SHALL BE OF THE HIGHEST QUALITY, HAVE TYPICAL GROWTH HABITS FOR THEIR SPECIES, BE SOUND, HEALTHY, VIGOROUS AND FREE OF INJURY. PARKWAY TREES AND PARKING LOT TREES SHALL HAVE A MINIMUM BRANCHING HEIGHT OF SIX (6) FEET ABOVE THE GROUND TO ALLOW ADEQUATE VISUAL AND PHYSICAL CLEARANCE.
- PLANTING SOIL TO BE A MINIMUM 6" DEPTH, UNLESS OTHERWISE SPECIFIED AS ABOVE OR ON DETAILS. TOPSOIL TO BE CLEAN, FRABLE LOAM FROM LOCAL SOURCE, FREE FROM STONES OR DEBRIS OVER 3/4" IN DIAMETER, AND FREE FROM TOXINS. TOPSOIL SHALL HAVE A pH BETWEEN 6 AND 7. TOPSOIL AND PLANTING SOIL SHALL BE TESTED TO CONFORM TO THESE SPECIFICATIONS AND SHALL BE AMENDED TO MEET THESE SPECIFICATIONS. DO NOT PLACE FROZEN OR MUDDY TOPSOIL. APPLY SOIL AMENDMENTS TO ALL LANDSCAPE BEDS PER SOIL TEST.**
- MATERIALS - EDGING:** EDGING SHALL BE 5" DEEP, BLACK, POLYETHYLENE EDGING INSTALLED PER MANUFACTURER'S RECOMMENDATION.
- MATERIALS - WEED BARRIER FABRIC:** ALL PLANTING BEDS SHALL BE INSTALLED WITH WOVEN WEED BARRIER FABRIC. NO PLASTIC/IMPERVIOUS BARRIERS WILL BE PERMITTED. EXAMPLE: BLACK VISQUEEN.
- MATERIALS:** ALL PLANTING BEDS AND PARKING ISLANDS TO RECEIVE 3" AGGREGATE GRAY GRANITE DECORATIVE STONE SPREAD TO A CONSISTENT DEPTH OF 4 INCHES OVER ENTIRE PLANTING AREA. DECORATIVE STONE MULCH TO BE PULLED AWAY FROM BASE OF PLANTS AT TIME OF INSTALLATION. COLOR AND SIZE SAMPLES SHALL BE PROVIDED TO OWNER FOR APPROVAL PRIOR TO INSTALLATION.
- TREES PLANTED IN INTERIOR LAWN AREAS TO BE INSTALLED WITH A 5' DIAMETER MULCH RING. AREA SHALL RECEIVE 3" AGGREGATE GRAY GRANITE DECORATIVE STONE SPREAD TO A CONSISTENT DEPTH OF 4 INCHES OVER ENTIRE TREE RING AREA. EDGING SHALL BE 5" DEEP, POLYETHYLENE EDGING INSTALLED PER MANUFACTURER'S RECOMMENDATION.**
- MATERIALS:** CONTRACTOR TO PROVIDE AND INSTALL ALL 12"-36" GRAY GRANITE BOULDERS AS INDICATED ON LANDSCAPE PLAN. GRAY GRANITE BOULDERS TO MEET STANDARDS OF TACO BELL DESIGN REQUIREMENTS. COLOR AND SIZE SAMPLES SHALL BE PROVIDED TO OWNER FOR APPROVAL PRIOR TO INSTALLATION.
- MATERIALS - BIOFILTRATION SEED:** AREAS DESIGNATED AS BIOFILTRATION BASIN TO BE HAND SEEDED WITH "DIVERSE PRAIRIE FOR MEDIUM SOILS" SEED MIX (ITEM NO. S0012) AS PROVIDED BY PRAIRIE NURSERY, P.O. BOX 306, WESTFIELD, WISCONSIN, 53984, TEL. 608-296-3679. INSTALL SEED WITH SUPPLEMENTAL MATERIALS AND AMENDMENTS AS RECOMMENDED BY SEED SUPPLIER AND AT RATES AND OPTIMUM TIMES OF THE YEAR AS RECOMMENDED BY THE SEED SUPPLIER TO ENSURE SUCCESSFUL GERMINATION AND SEED/ROOT ZONE GROWTH DEVELOPMENT.
- MATERIALS: SOO ALL DISTURBED AREAS AS SPECIFIED IN THESE NOTES: TURFGRASS SOO:** CLASS OF TURFGRASS SOO SHALL BE PREMIUM GRADE APPROVED TURFGRASS SOO. ONLY IMPROVED TYPES OF SOO (ELITE) ARE ACCEPTABLE. TURFGRASS SHALL BE MACHINE CUT AT A UNIFORM THICKNESS OF .60 INCH, PLUS OR MINUS .25 INCH. AT TIME OF CUTTING, MEASUREMENT FOR THICKNESS SHALL EXCLUDE TOP GROWTH AND THATCH. LARGE ROLL TURFGRASS SOO SHALL BE CUT TO THE SUPPLIER'S STANDARD WIDTH (36-48 INCHES) AND LENGTH. BROKEN PAIS AND TORN OR UNEVEN ENDS WILL NOT BE ACCEPTABLE. STANDARD SIZE SECTIONS OF TURFGRASS SOO SHALL BE STRONG ENOUGH SO THAT IT CAN BE PICKED UP AND HANDLED WITHOUT DAMAGE. TURFGRASS SOO SHALL NOT BE HARVESTED OR TRANSPLANTED WHEN MOISTURE CONTENT (EXCESSIVELY DRY OR WET) MAY ADVERSELY AFFECT ITS SURVIVAL. POST-PLANT IRRIGATION WILL BE NECESSARY TO ENSURE SOO STAYS ALIVE AND ROOTS INTO SOIL. THE CONTRACTOR IS RESPONSIBLE FOR WATERING SOO UNTIL TIME OF ACCEPTANCE BY THE OWNER. TURFGRASS SOO SHALL BE HARVESTED, DELIVERED, AND INSTALLED/TRANSPLANTED WITH A PERIOD OF 24 HOURS. TURFGRASS SOO SHALL BE RELATIVELY FREE OF THATCH, UP TO .5 INCH ALLOWABLE (UNCOMPRESSED). TURFGRASS SOO SHALL BE REASONABLY FREE (10 WEEDS/100 SQ. FT.) OF DISEASES, NEMATODES AND SOIL-BORNE INSECTS. ALL TURFGRASS SOO SHALL BE FREE OF GRASSY AND BROAD LEAF WEEDS. THE SOO SUPPLIER SHALL MAKE RECOMMENDATIONS TO THE CONTRACTOR REGARDING WATERING SCHEDULE. THE WATERING SCHEDULE SHOULD BEGIN IMMEDIATELY AFTER SOO IS INSTALLED.
- PRUNING:** THE CONTRACTOR SHALL PRUNE ALL TREES AND REPAIR ANY INJURIES THAT OCCURRED DURING THE PLANTING PROCESS. DOUBLE LEADERS, DEAD BRANCHES, AND LIMBS DAMAGED OR BROKEN DURING THE PLANTING PROCESS SHALL BE PRUNED. THIS SHALL BE THE ONLY PRUNING ALLOWED AT PLANTING. PRUNING SHALL CONFORM TO AMERICAN STANDARD FOR TREE CARE OPERATIONS, ANSI A300. PRUNE TREES IN ACCORDANCE WITH NAA GUIDELINES. DO NOT TOP TREES. PRUNE SHRUBS ACCORDING TO STANDARD HORTICULTURAL PRACTICES. ON CUTS OVER 3/4" IN DIAMETER AND BRUISES OR SCARS ON BARK, TRACE THE INJURED CAMBRUM LAYER BACK TO LIVING TISSUE AND REMOVE. SMOOTH AND SHAPE WOUNDS SO AS NOT TO RETAIN WATER AND COAT THE TREATED AREA WITH AN APPROVED ANTISEPTIC TREE PAINT.
- CLEANUP:** DISPOSED OF EXCESS SOIL. REMOVE ALL CUTTINGS AND WASTE MATERIALS. SOIL, BRANCHES, BINDING AND WRAPPING MATERIALS, REJECTED PLANTS, OR OTHER DEBRIS RESULTING FROM ANY PLANTING SHALL BE PROMPTLY CLEANED UP AND REMOVED. THE WORK AREA SHALL BE KEPT SAFE AND NEAT AT ALL TIMES UNTIL THE CLEANUP OPERATION IS COMPLETED. UNDER NO CIRCUMSTANCES SHALL THE ACCUMULATION OF SOIL, BRANCHES OR OTHER DEBRIS BE ALLOWED UPON A PUBLIC PROPERTY IN SUCH A MANNER AS TO RESULT IN A PUBLIC HAZARD. LIKEWISE, UNDER NO CIRCUMSTANCES SHALL ANY DEBRIS OR INCIDENTAL MATERIALS BE ALLOWED UPON ADJACENT PRIVATE PROPERTY.
- MAINTENANCE:** (CONTRACTOR) FOR ALL PLANTINGS, BUFFER AREAS AND SEEDED LAWN AREAS: THE CONTRACTOR SHALL MAINTAIN ALL PLANTINGS AND LAWN AREAS FOR AT LEAST A PERIOD OF 30 DAYS, OR UNTIL FINAL ACCEPTANCE FROM THE OWNER. THE CONTRACTOR IS RESPONSIBLE FOR ADEQUATELY WATERING PLANTS AND LAWN DURING THIS 30 DAY ESTABLISHMENT PERIOD. CONTRACTOR IS RESPONSIBLE FOR THE ESTABLISHMENT OF HEALTHY VIGOROUS PLANT MATERIALS AND LAWN/TURFGRASS GROWTH. CONTRACTOR IS ALSO RESPONSIBLE FOR ANY PRUNING OF PLANT MATERIALS, AND SHAPING AND/OR REPLACEMENT OF DEFICIENT BARK MULCH DURING THIS PERIOD. LONG TERM PLANT MATERIALS AND LAWN/TURFGRASS MAINTENANCE AND ANY PROGRAM FOR SUCH IS THE RESPONSIBILITY OF THE OWNER. ALL PLANTINGS AND LAWN TURFGRASS AREAS SHALL BE MAINTAINED IN A MANICURED CONDITION.



L + A
ARCHITECTS
INC. A.I.A.

2430 ROCHESTER COURT
SUITE 200
TROY, MICHIGAN 48063
PHONE (248) 524-4700 FAX (248) 524-9746

PROJECT NO. T12020

DATE	ISSUE
4-2-2013	INITIAL UDC SUBMITTAL
4-8-2013	REVISED UDC SUBMITTAL
4-22-2013	REVISED PER CITY
6-19-2013	UDC and PC SUBMITTAL
7-30-2013	UDC and PC SUBMITTAL

CONTRACT DATE:	--
BUILDING TYPE:	MED-NI-40
PLAN VERSION:	DEC 12-A
SITE NUMBER:	309441
STORE NUMBER:	--

TACO BELL

698 S. Whitney Way
Madison, WI

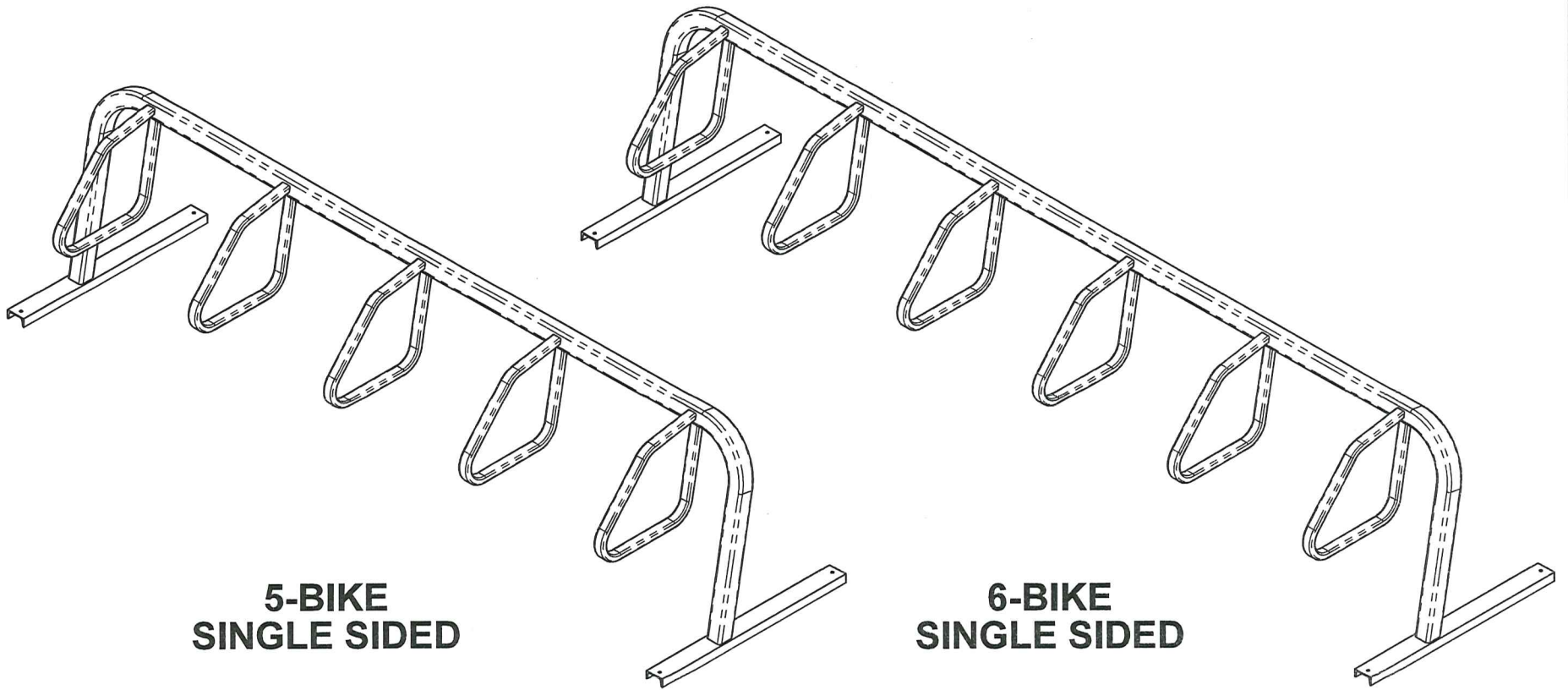


MEDIUM40-NI

LANDSCAPE
DETAILS &
SPECIFICATIONS


L 2.0

PLOT DATE: 4-22-13

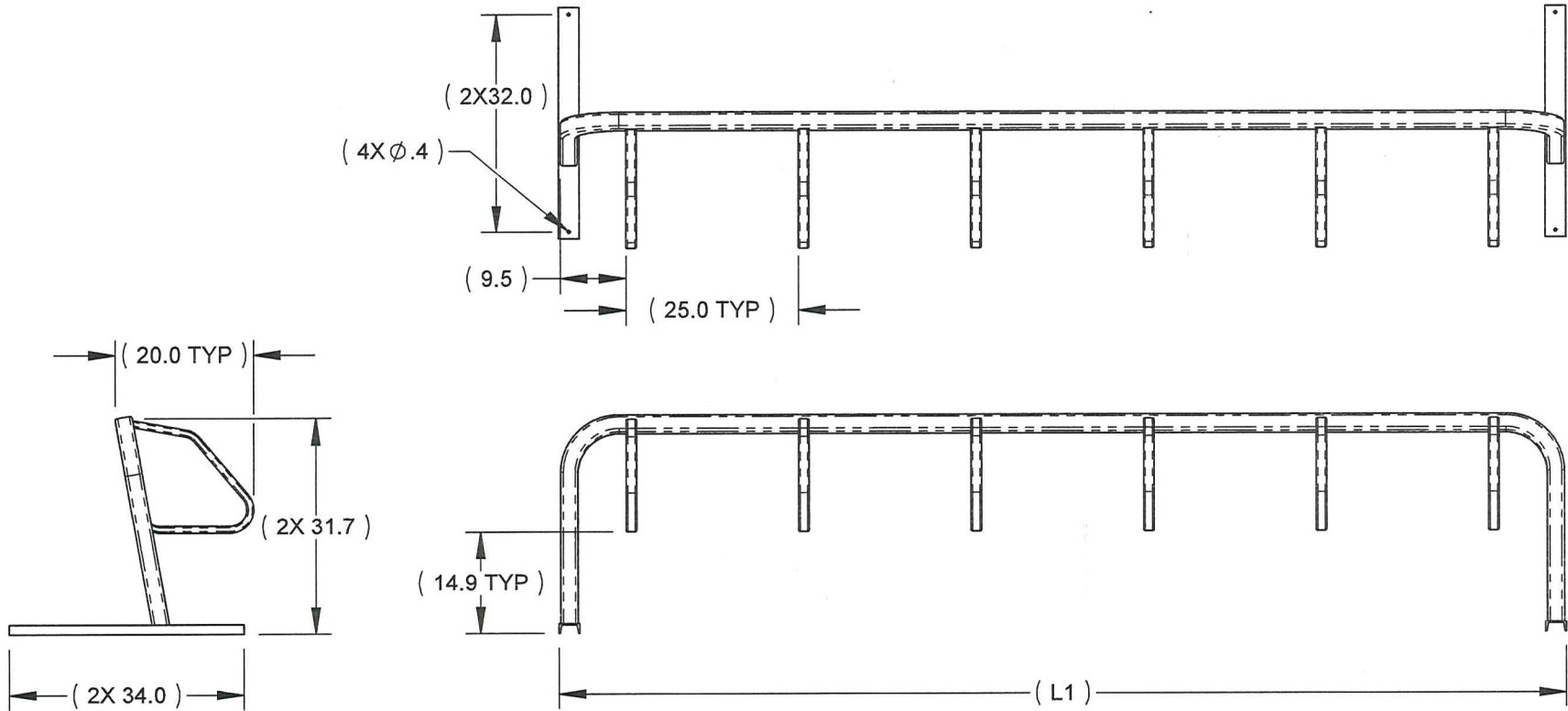


**5-BIKE
SINGLE SIDED**

**6-BIKE
SINGLE SIDED**

 <p>SARIS CYCLING GROUP</p> <p>WE BRING CYCLING TO LIFE.</p>	<p>SARIS CYCLING GROUP</p> <p>5253 VERONA RD., MADISON WI. 53711 1-800-783-7257 / 1-608-274-1702 WWW.SARIS PARKING.COM</p>
	<p><small>THE INFORMATION CONTAINED IN THIS DRAWING IS THE SOLE PROPERTY OF SARIS CYCLING GROUP ANY REPRODUCTION IN PART OR WHOLE WITHOUT THE WRITTEN PERMISSION OF SARIS CYCLING GROUP IS PROHIBITED.</small></p> <p>TITLE: CITY RACK, 2400 SERIES, SGL, FS</p>

TABULATION					
BLACK P/N	COLOR P/N	GALVANIZED P/N	# OF BIKES	L1 (IN.)	WEIGHT (LBS)
2403	2403C	2403G	3	71.0	102.0
2406	2406C	2406G	4	96.0	121.2
2409	2409C	2409G	5	121.0	140.4
2412	2412C	2412G	6	146.0	159.6




SARIS
CYCLING GROUP

WE BRING CYCLING TO LIFE.

SARIS CYCLING GROUP

5253 VERONA RD., MADISON WI. 53711
1-800-783-7257 / 1-608-274-1702
WWW.SARISPARKING.COM

THE INFORMATION CONTAINED IN THIS DRAWING IS THE SOLE PROPERTY OF SARIS CYCLING GROUP ANY REPRODUCTION IN PART OR WHOLE WITHOUT THE WRITTEN PERMISSION OF SARIS CYCLING GROUP IS PROHIBITED.

TITLE:
CITY RACK, 2400 SERIES, SGL, FS

FEATURES & SPECIFICATIONS

INTENDED USE — Ideal for use in car lots, street lighting or parking areas.

CONSTRUCTION — Rugged, .063" thick, aluminum rectilinear housing. Formed for weather-tight seal and integrity.

Naturally anodized, extruded, aluminum door frame with mitered corners is retained with (two) .188" diameter hinge pins and secured with (one) quarter-turn, quick-release fastener. Weatherproof seal between housing and door frame is accomplished with an integrally designed, extruded silicone gasket that snaps into door frame and another gasket applied to the housing.

FINISH — Standard finish is dark bronze (DDB) polyester powder finish with other architectural colors available.

OPTICAL SYSTEM — Reflectors: anodized and segmented for superior uniformity and control. Reflectors attach with tool-less fasteners and are rotatable and interchangeable. Five cutoff distributions available: Type II (roadway), Type III (asymmetric), Type IV (forward throw, sharp cutoff), Type IV (wide, forward throw) and Type V (square symmetrical).

Lens: 0.125" thick, impact-resistant, tempered, glass with thermally applied, silk screened shield.

ELECTRICAL SYSTEM — Ballast: Constant-wattage autotransformer for 250-400W. Super CWA pulse-start ballast required for 320W and 350W (SCWA option). Ballast is copper wound and 100% factor-tested.

Socket: Porcelain, position-oriented, horizontally mounted, mogul-base socket with copper alloy, nickel-plated screw shell and center contact. UL listed 1500W- 600V.

INSTALLATION — Extruded aluminum arm for pole or wall mounting is shipped in fixture carton. Optional mountings available.

LISTING — UL Listed (standard). CSA Certified (see Options). NOM Certified (see Options). UL Listed for 25°C ambient temperatures and wet locations. IP65 rated.

Catalog Number		KSF2 400M R4SC TB SP04 SCWA LPI	
Notes		Type	
Taco Bell - Vienna, WI		A	

Area Lighting

KSF2

METAL HALIDE

250W - 400W

HIGH PRESSURE SODIUM

200W - 400W

15' to 25' Mounting



Specifications

*Weight: 52 lbs (23.6kg)

EPA: 2.0 ft.² (.28m²) (includes arm)

Length: 24-19/32 (62.5)

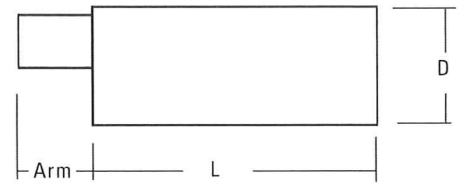
Width: 17-25/32 (45.2)

Depth: 8-5/16 (21.1)

Arm: 4 (10.2)

*Weight as configured in example below.

All dimensions are inches (centimeters) unless otherwise specified. Specifications subject to change without notice.



Mounting Option	Drilling Template
SPxx, RPxx, DA12P	5
WBxx, DA12WB	6
WWxx	7

ORDERING INFORMATION

For shortest lead times, configure product using **standard options (shown in bold)**.

Example: KSF2 400M R3 TB SP04 LPI

KSF2	400M	R4SC	TB	SP04	SCWA	Options	LPI
Series			Voltage	Mounting	Ballast	Options	Lamp ¹⁶
KSF2			120	Pole type	(blank) Magnetic ballast	Shipped installed in fixture	LPI Lamp included (standard)
Wattage			208 ⁴	SP Square pole	CWI Constant wattage isolated	SF Single fuse 120, 277, 347V ¹⁰	L/LP Less lamp
Metal halide			240 ⁴	RP__ Round pole	Pulse Start	DF Double fuse 208, 240, 480V ¹⁰	
250M			277	WB__ Wall bracket	SCWA Super CWA pulse start ballast	EC Emergency circuit ¹¹	
320M ^{1,2}			347	WW__ Wood pole or wall bracket	NOTE: SCWA ballast must be selected to comply with California Title 20 metal halide regulations. SCWA also may be required to meet other states' regulations. Consult local authorities.	PER NEMA twist-lock receptacle only (no photocontrol)	Finish ¹⁴
350M ^{1,2}			480 ⁴	DA12P Degree arm (pole) ⁹		QRS Quartz restrike system ¹¹	(blank) Dark bronze
400M¹			TB⁵	DA12WB Degree arm (wall) ⁹		QRSTD QRS time delay ^{7,11}	DWH White
High pressure sodium ³			TBV ⁶	KMA Mast arm external fitter ⁹		CSA CSA Certified	DBL Black
Distribution			23050HZ ⁷	KTMB Twin mounting bar ⁹		NOM NOM Certified	DMB Medium bronze
200S	R2 IES type II roadway					HS Houseside shield ¹²	DNA Natural aluminum
250S	R3 IES type III asymmetric					Shipped separately ¹³	CR Corrosion-resistant
400S	R4SC IES type IV forward throw, sharp cutoff					PE1 NEMA twist-lock PE (120, 208, 240V)	CRT Non-stick protective coating¹⁵
	R4W IES type IV wide, forward throw					PE3 NEMA twist-lock PE (347V)	
	R5S IES type V square					PE4 NEMA twist-lock PE (480V)	
						PE7 NEMA twist-lock PE (277V)	
						SC Shorting cap for PER option	
						VG Vandal guard	

NOTES:

- Use reduced jacketed lamp.
- Must be ordered with SCWA.
- Not available with SCWA.
- Must specify CWI for use in Canada.
- Optional multi-tap ballast (120, 208, 240, 277V). (120, 277, 347V in Canada).
- Optional five-tap ballast (120, 208, 240, 277, 480V). Not available with CSA.
- Consult factory for available wattages.
- 9" arm is required when two or more luminaires are oriented on a 90° drilling pattern.

- Ships separately.
- Must specify voltage. Not available with TB or TBV.
- Max allowable wattage lamp included.
- Available with R2 & R3 distributions only.
- May be ordered as an archery.
- See www.lithonia.com/archcolors for additional color options.
- Black finish only.
- Must be specified.
- Must use RP09 or RP12.

Accessories: Tenon Mounting Slipfitter

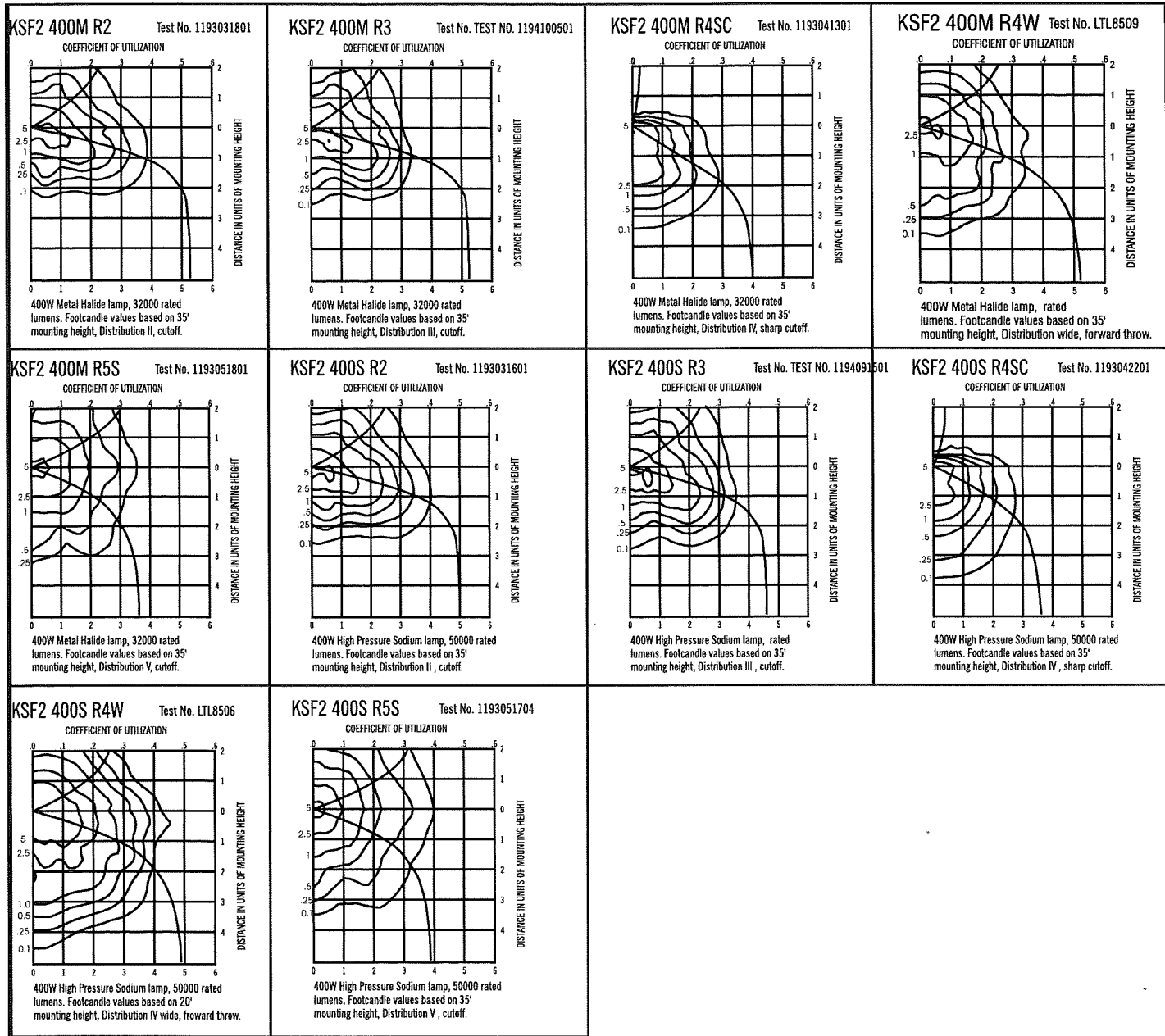
Order as separate catalog number.

Number of fixtures

Tenon O.D.	One	Two@180°	Two@90°	Three@120°	Three@90°	Four@90°
2-3/8"	T20-190	T20-280	T20-290 ¹⁷	T20-320	T20-390 ¹⁷	T20-490 ¹⁷
2-7/8"	T25-190	T25-280	T25-290 ¹⁷	T25-320	T25-390 ¹⁷	T25-490 ¹⁷
4"	T35-190	T35-280	T35-290 ¹⁷	T35-320	T35-390 ¹⁷	T35-490 ¹⁷
KSF2HS	House side shield ¹²					
KSF2VG	Vandal guard					

KSF2 Arm-Mounted Rectilinear Cutoff Lighting

Coefficient of Utilization _____
Initial Footcandles _____



NOTES:

- For electrical characteristics, consult technical data tab.
- Tested to current IES and NEMA standards under stabilized laboratory conditions. Various operating factors can cause differences between laboratory and actual field measurements. Dimensions and specifications are based on the most current available data and are subject to change.
- Photometric data for other distributions can be accessed from www.lithonia.com.

Mounting Height Correction Factor

(Multiply the fc level by the correction factor)

15 ft.= 5.4

30 ft.= 1.36

40 ft.= .77

$$\left(\frac{\text{Existing Mounting Height}}{\text{New Mounting Height}} \right)^2 = \text{Correction factor}$$

Catalog Number KSF2 400M R4SC TB SP04 SCWA LPI	
Notes Taco Bell - Vienna, WI	Type A

FEATURES & SPECIFICATIONS

CONSTRUCTION — Weldable-grade, hot-rolled, commercial-quality carbon steel tubing with a minimum yield of 55,000 psi (11-gauge), 50,000 psi (7-gauge). Uniform wall thickness of .125" or .188". Shafts are one-piece with a full-length longitudinal, high-frequency electric resistance weld. Uniformly square in cross-section with flat sides, small corner radii and excellent torsional qualities. Available shaft widths are 4", 5" and 6".

Anchor base is fabricated from hot-rolled carbon steel plate conforming to ASTM A36, that meets or exceeds a minimum yield strength of 36,000 psi. The anchor base is provided with slotted holes. Base cover is finished to match pole. A handhole having nominal dimensions of 3" x 5" for all shafts. Included is a cover with attachment screws.

Top cap provided with all drill-mount poles.

Fasteners are high-strength galvanized, zinc-plated or stainless steel.

FINISH — Dark bronze (DDB) polyester powder standard. Other architectural colors available. See www.lithonia.com/archcolors.

GROUNDING — Provision located immediately inside handhole rim. Grounding hardware is not included (provided by others).

ANCHOR BOLTS — Top portion of anchor bolt is galvanized per ASTM A-153. Made of steel rod having a minimum yield strength of 55,000 psi.

Anchor Base Poles

SSS

SQUARE STRAIGHT STEEL



ORDERING INFORMATION

Lead times will vary depending on options selected. Consult with your sales representative.

Example: SSS 20 5C DM19 DDB

SSS	400M	R4SC	TB	SP04	SCWA
Shaft type	Nominal fixture mounting height	Nominal shaft base size/wall thickness	Mounting ¹	Options	Finish ⁷

SSS

10 – 39 feet
(see back page.)

(See back page.)

Tenon mounting

PT Open top
T20 2-3/8" O.D. (2" NPS)
T25 2-7/8" O.D. (2-1/2" NPS)
T30 3-1/2" O.D. (3" NPS)
T35 4" O.D. (3-1/2" NPS)

Drill mounting²

DM19 1 at 90°
DM28 2 at 180°
DM28PL 2 at 180° with one side plugged
DM29 2 at 90°
DM39 3 at 90°
DM49 4 at 90°

AERIS/OMERO Drill mounting²

DM19AS 1 at 90°
DM28AS 2 at 180°
DM29AS 2 at 90°
DM39AS 3 at 90°
DM49AS 4 at 90°

AERIS Suspend Drill mounting^{2,3}

DM19AST_ 1 at 90°
DM28AST_ 2 at 180°
DM29AST_ 2 at 90°
DM39AST_ 3 at 90°
DM49AST_ 4 at 90°

OMERO Suspend Drill mounting^{2,3}

DM19MRT_ 1 at 90°
DM28MRT_ 2 at 180°
DM29MRT_ 2 at 90°
DM39MRT_ 3 at 90°
DM49MRT_ 4 at 90°

Shipped installed

L/AB Less anchor bolts
VD Vibration damper
TP Tamper proof
Hxx Horizontal arm bracket (1 fixture)^{4,5}
FDLxx Festoon outlet less electrical⁴
FGLxx Festoon GFI outlet less electrical⁴
CPL12xx 1/2" coupling⁴
CPL34xx 3/4" coupling⁴
CPL1xx 1" coupling⁴
NPL12xx 1/2" threaded nipple⁴
NPL34xx 3/4" threaded nipple⁴
NPL1xx 1" threaded nipple⁴
HHxx Extra handhole^{4,6}

Standard colors

DDB Dark bronze
DWH White
DBL Black
DMB Medium bronze
DNA Natural aluminum
GALV Galvanized finish

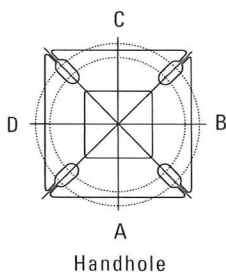
Classic colors

DSS Sandstone
DGC Charcoal gray
DTG Tennis green
DBR Bright red
DSB Steel blue

Architectural colors

(powder finish)⁷

HANDHOLE ORIENTATION



NOTES:

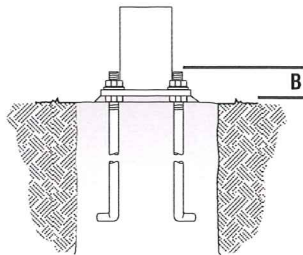
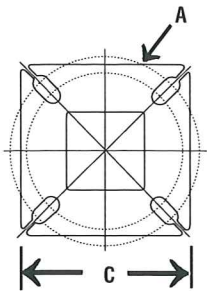
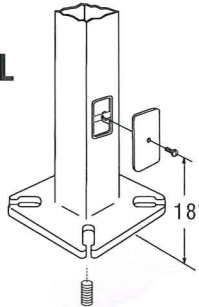
- When ordering tenon mounting and drill mounting for the same pole, follow this example: DM28/T20. The combination includes a required extra handhole.
- The drilling template to be used for a particular luminaire depends on the luminaire that is used. Refer to the Technical Data Section of the Outdoor Binder for Drilling Templates.
- Insert "1" or "2" to designate fixture size; e.g. DM19AST2.
- Specify location and orientation when ordering option.
For 1st "x": Specify the height in feet above base of pole.
Example: 5ft = 5 and 20ft = 20
For 2nd "x": Specify orientation from handhole (A,B,C,D)
Refer to the Handhole Orientation diagram on this page.
- Horizontal arm is 18" x 2-3/8" O.D. tenon standard.
- Combination of tenon-top and drill mount requires extra handhole.
- Additional colors available; see www.lithonia.com/archcolors or Architectural Colors brochure (Form No. 794.3). Powder finish standard.

SSS Square Straight Steel Poles

TECHNICAL INFORMATION

Catalog Number	Nominal shaft length (feet)	Pole Shaft Size (in x ft)	Wall Thickness (inches)	Gauge	EPA (ft ²) with 1.3 gust						Bolt Circle (inches)	Bolt Size (in. x in. x in.)	Approximate ship weight (pounds)
					80 mph	Max. weight	90 mph	Max. weight	100 mph	Max. weight			
SSS 10 4C	10	4.0 x 10.0	0.125	11	30.6	765	23.8	595	18.9	473	8--9	3/4 x 18 x 3	75
SSS 12 4C	12	4.0 x 12.0	0.125	11	24.4	610	18.8	470	14.8	370	8--9	3/4 x 18 x 3	90
SSS 14 4C	14	4.0 x 14.0	0.125	11	19.9	498	15.1	378	11.7	293	8--9	3/4 x 18 x 3	100
SSS 16 4C	16	4.0 x 16.0	0.125	11	15.9	398	11.8	295	8.9	223	8--9	3/4 x 18 x 3	115
SSS 18 4C	18	4.0 x 18.0	0.125	11	12.6	315	9.2	230	6.7	168	8--9	3/4 x 18 x 3	125
SSS 20 4C	20	4.0 x 20.0	0.125	11	9.6	240	6.7	167	4.5	150	8--9	3/4 x 18 x 3	140
SSS 20 4G	20	4.0 x 20.0	0.188	7	16.5	415	12.25	310	9.3	240	8--9	3/4 x 30 x 3	198
SSS 20 5C	20	5.0 x 20.0	0.125	11	17.7	443	12.7	343	9.4	235	10--12	1 x 36 x 4	185
SSS 20 5G	20	5.0 x 20.0	0.188	7	28.1	703	21.4	535	16.2	405	10--12	1 x 36 x 4	265
SSS 25 4C	25	4.0 x 25.0	0.125	11	4.8	150	2.6	100	1.0	50	8--9	3/4 x 18 x 3	170
SSS 25 4G	25	4.0 x 25.0	0.188	7	10.8	270	7.7	188	5.4	135	8--9	3/4 x 30 x 3	245
SSS 25 5C	25	5.0 x 25.0	0.125	11	9.8	245	6.3	157	3.7	150	10--12	1 x 36 x 4	225
SSS 25 5G	25	5.0 x 25.0	0.188	7	18.5	463	13.3	333	9.5	238	10--12	1 x 36 x 4	360
SSS 30 4G	30	4.0 x 30.0	0.188	7	6.4	160	4.0	100	2.3	58	8--9	3/4 x 30 x 3	295
SSS 30 5C	30	5.0 x 30.0	0.125	11	4.7	150	2.0	50	--	--	10--12	1 x 36 x 4	265
SSS 30 5G	30	5.0 x 30.0	0.188	7	10.7	267	6.7	167	3.9	100	10--12	1 x 36 x 4	380
SSS 30 6G	30	6.0 x 30.0	0.188	7	19.0	475	13.2	330	9.0	225	11--13	1 x 36 x 4	520
SSS 35 5G	35	5.0 x 35.0	0.188	7	5.9	150	2.5	100	--	--	10--12	1 x 36 x 4	440
SSS 35 6G	35	6.0 x 35.0	0.188	7	12.4	310	7.6	190	4.2	105	11--13	1 x 36 x 4	540
SSS 39 6G	39	6.0 x 39.0	0.188	7	7.2	180	3.0	75	--	--	11--13	1 x 36 x 4	605

BASE DETAIL



Shaft base size	Bolt circle A	Bolt projection B	Base square	Pole Data		
				Template description	Anchor bolt description	Anchor bolt and template number
4"C	8-1/2"	2-3/4"-4"	8"	ABTEMPLATE PJ50004	AB18-0	ABSSS-4C
4"G	8-1/2"	2-3/4"-4"	8"	ABTEMPLATE PJ50004	AB30-0	ABSSS-4G
5"	10"-12"	3-3/8"-4"	11"	ABTEMPLATE PJ50010	AB36-0	ABSSS-5
6"	11"-13"	3-3/8"-4"	12-1/2"	ABTEMPLATE PJ50011	AB36-0	N/A

IMPORTANT INSTALLATION NOTES:

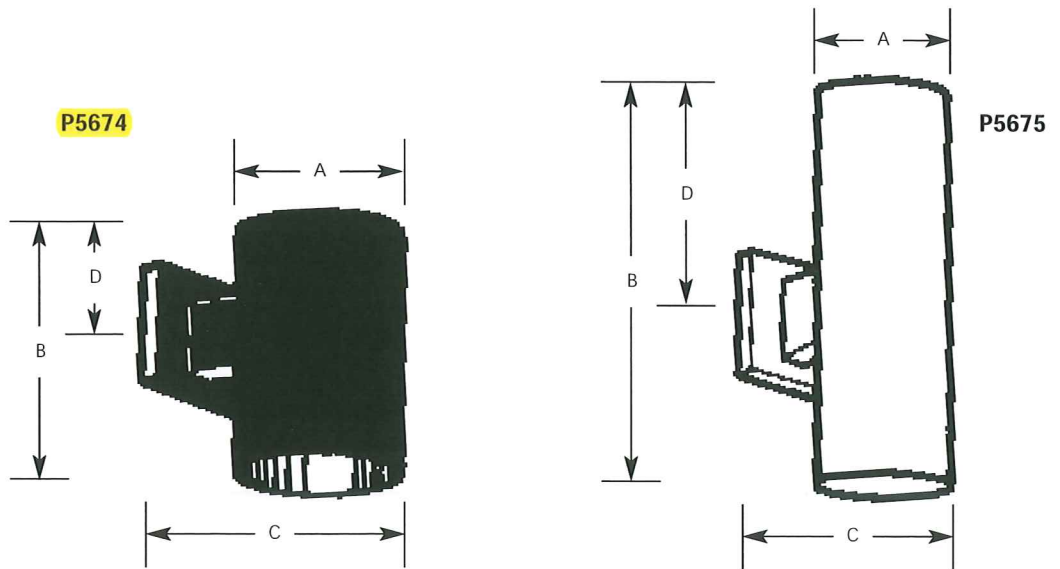
- Do not erect poles without having fixtures installed.
- Factory-supplied templates must be used when setting anchor bolts. Lithonia Lighting will not accept claim for incorrect anchorage placement due to failure to use factory template.
- If poles are stored outside, all protective wrapping must be removed immediately upon delivery to prevent finish damage.
- Lithonia Lighting is not responsible for the foundation design.

IMPORTANT:

- These specifications are intended for general purposes only. Lithonia reserves the right to change material or design, without prior notice, in a continuing effort to upgrade its products.

	Type			
	-20	-30	-31	-82
P5674	<input type="checkbox"/>	<input type="checkbox"/>	<input type="checkbox"/>	<input type="checkbox"/>
P5675	<input type="checkbox"/>	<input type="checkbox"/>	<input type="checkbox"/>	<input type="checkbox"/>

Catalog No.	Finish				Lamping	Dimensions (Inches)			
	Bronze	White	Black	Gray		A	B	C	D
P5674	-20	-30	-31	-82	1-75w PAR30, 65w BR30	5	7-1/4	8	2-1/2
P5675	-20	-30	-31	-82	2-75w PAR30	5	14	8	7



Specifications:

General

- Extruded aluminum .125 wall thickness one piece cylinder
- Cast aluminum wall bracket
- P5674 - Down lighting
- P5675 - Up/Down lighting. P8799-31 top cover lens recommended when unit is used outdoors
- Interior finish matches exterior finish

Mounting

- Covers any outlet box
- Cast mounting bracket is 4-1/2" square
- Outlet box mounting bracket supplied permitting attachment of unit to wall with one almost invisible set screw

Electrical

- Medium base porcelain socket with nickel plated brass screw shell

Options

- Bronze finish - specify "20" suffix
- White finish - specify "30" suffix
- Black finish - specify "31" suffix
- Metallic Gray finish - specify "82" suffix

Accessories

- P8799-31 Top lens cover for P5675 fixture

Labeling

- UL-CUL wet location listed - P5674 and P5675 with top cover
- P5675 UL-CUL listed for indoor use with no cover