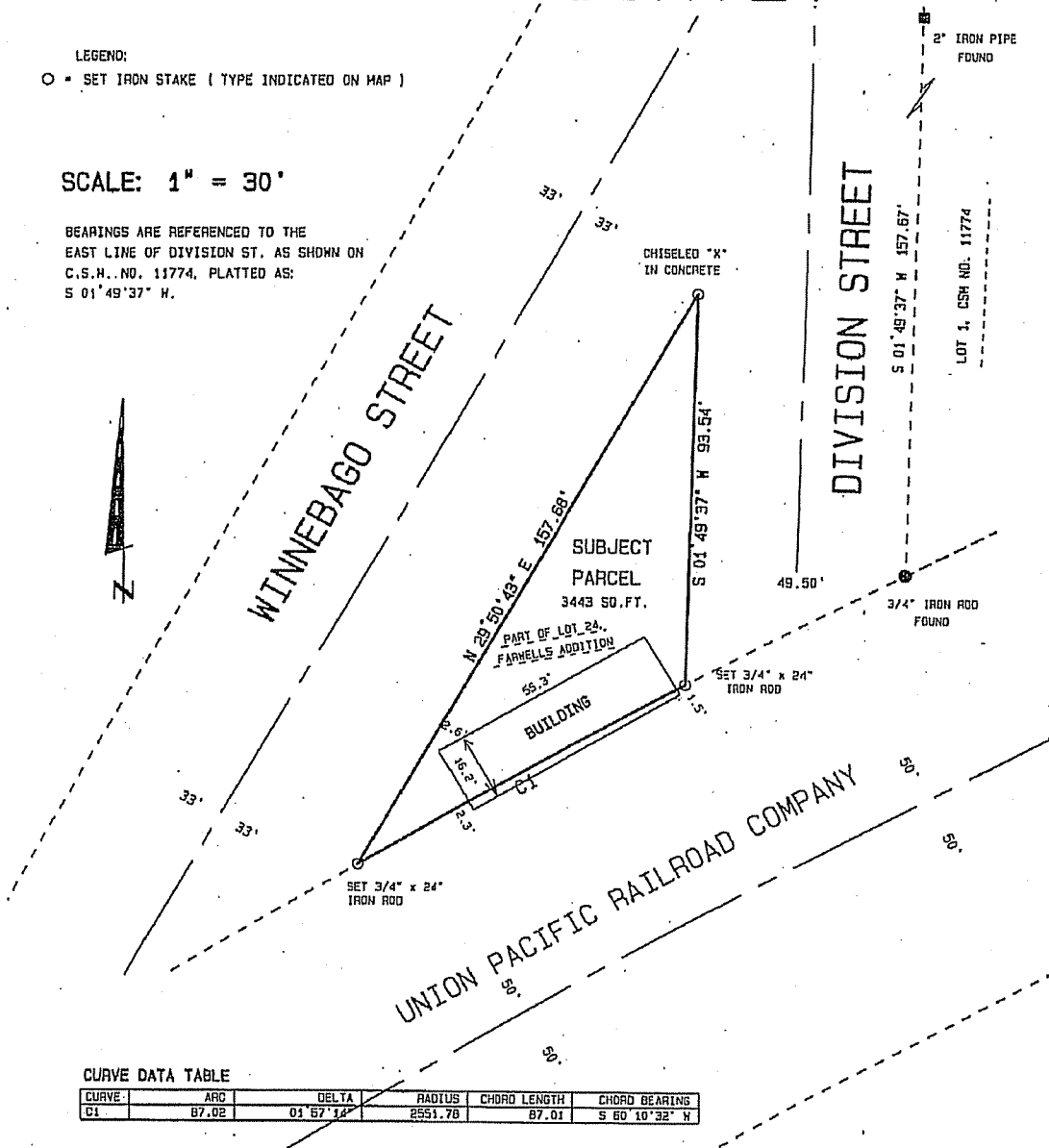


PLAT OF SURVEY

LEGEND:
 ○ SET IRON STAKE (TYPE INDICATED ON MAP)

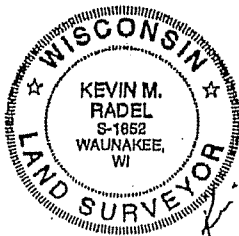
SCALE: 1" = 30'

BEARINGS ARE REFERENCED TO THE
 EAST LINE OF DIVISION ST. AS SHOWN ON
 C.S.H. NO. 11774, PLATTED AS:
 S 01° 49' 37" N.



CURVE DATA TABLE

CURVE	ARC	DELTA	RADIUS	CHORD LENGTH	CHORD BEARING
C1	87.02	01° 57' 14"	2551.76	87.01	S 60° 10' 32" N



K. M. Radel
 7-7-06