

Bassett Apartments

115-117 S. Bassett

Major Alteration to an approved PUD-GDP-SIP

| | | | |
|----|-------------|------|------------------|
| A1 | Floor plans | SL-1 | Site plan |
| A2 | Floor plans | SL-2 | Grading Plan |
| A3 | Elevations | SL-3 | |
| A4 | Elevations | SL-4 | Landscape plan |
| A5 | Sections | SL-5 | Landscape legend |
| A6 | 3D images | | |
| A7 | 3D images | | |

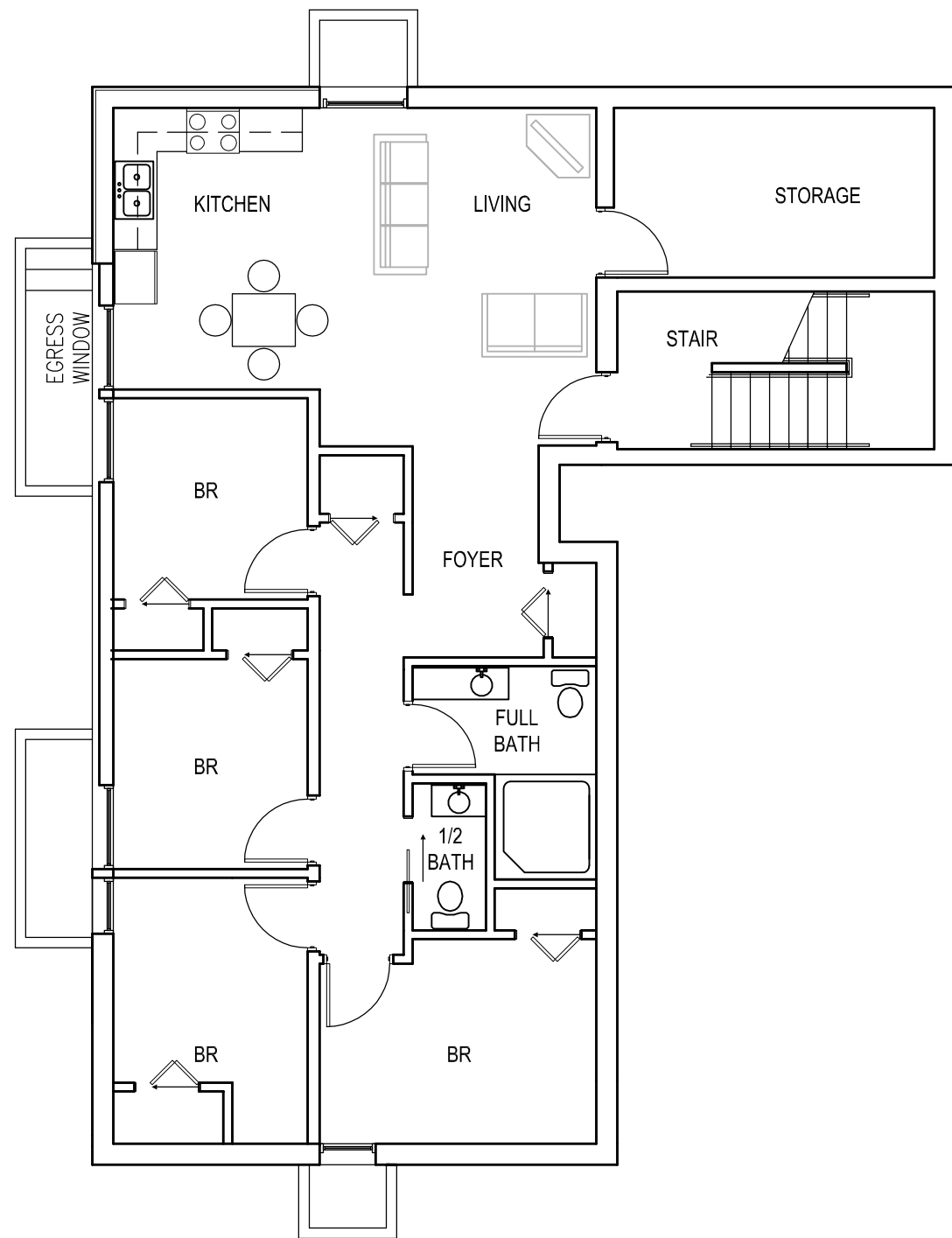


ARD EBERLE ARCHITECTS

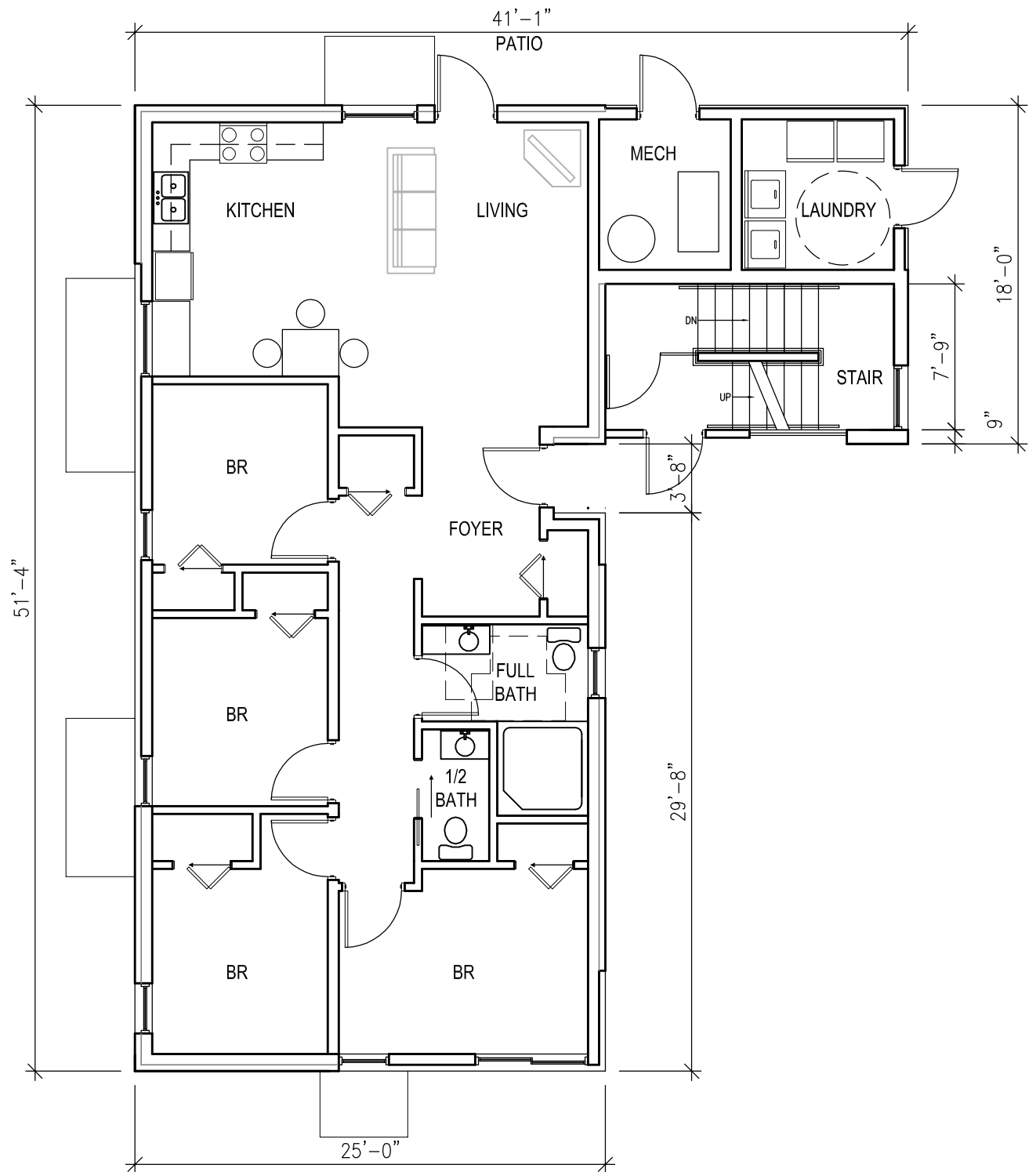
Owner: Brandon Cook
115-117 South Bassett

PUD-SIP
Bassett Apartments
Major Alt to Approved PUD

Date 12/1/2010



1 LOWER LEVEL FLOOR PLAN
1/8" = 1'-0"



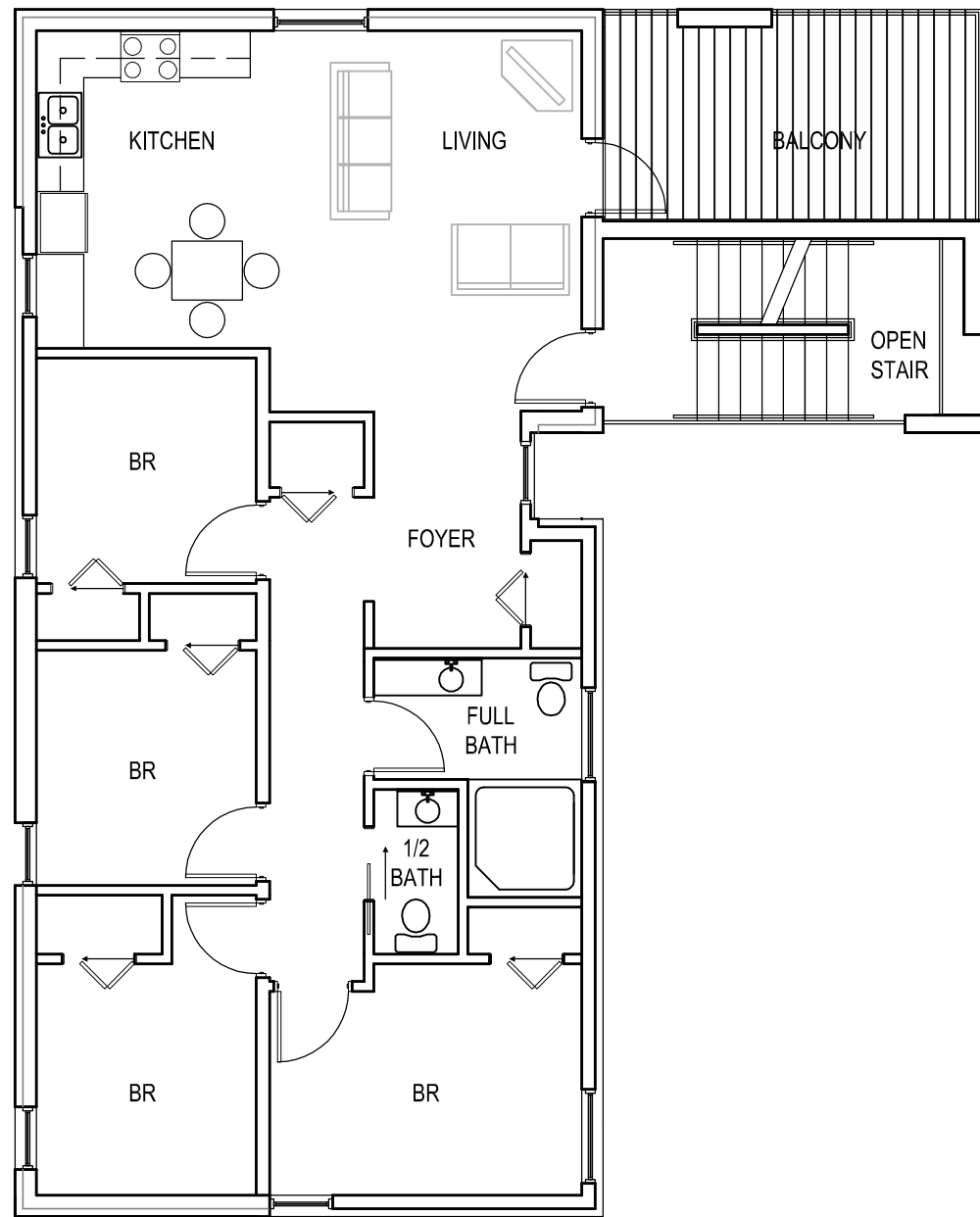
2 FIRST FLOOR PLAN
1/8" = 1'-0"

ARD EBERLE ARCHITECTS

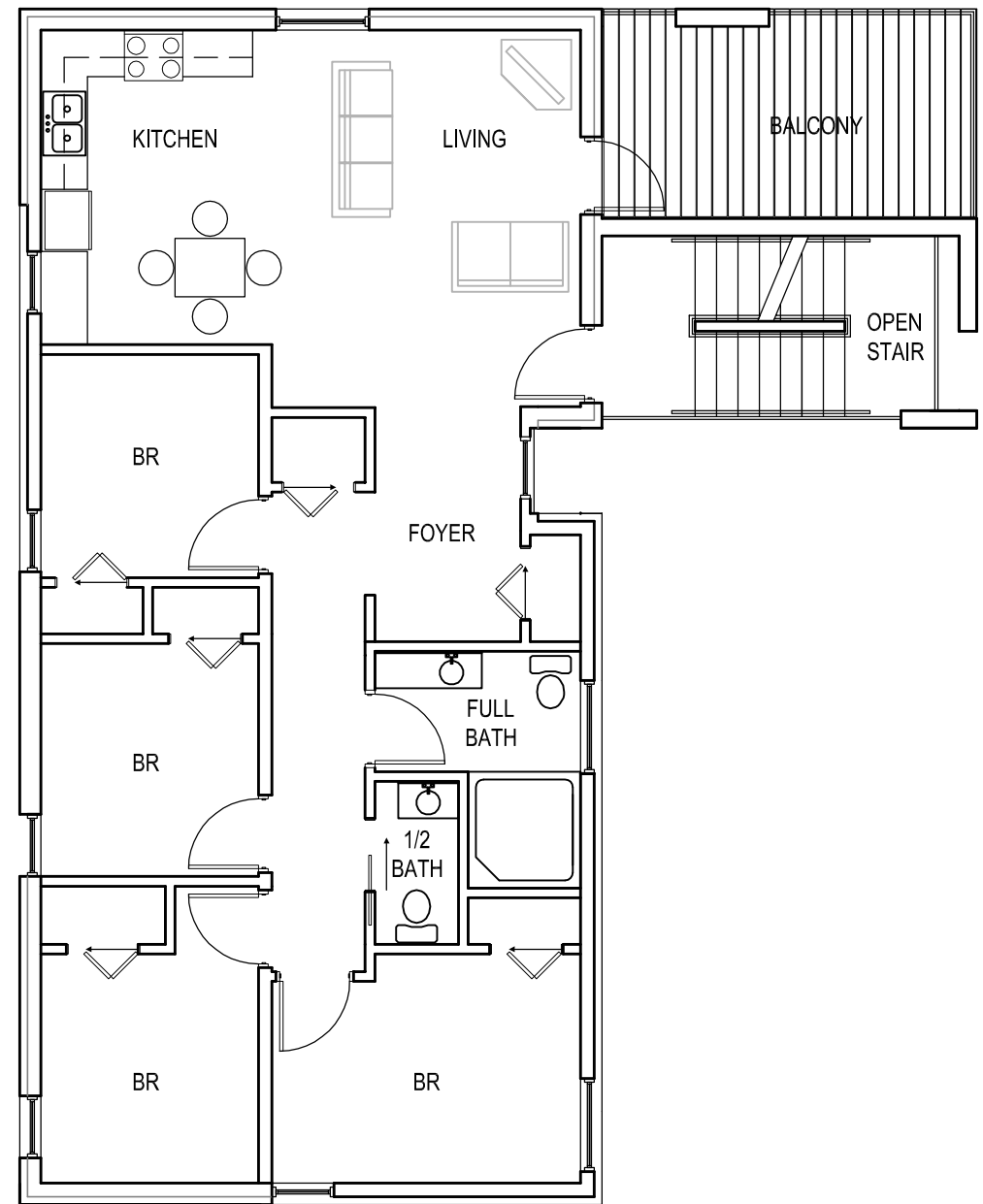
Owner: Brandon Cook
115-117 South Bassett

PUD-SIP
Bassett Apartments
Major Alt to Approved PUD

Date 12/1/2010 **A1**



3 SECOND FLOOR PLAN
1/8" = 1'-0"



4 THIRD FLOOR PLAN
1/8" = 1'-0"

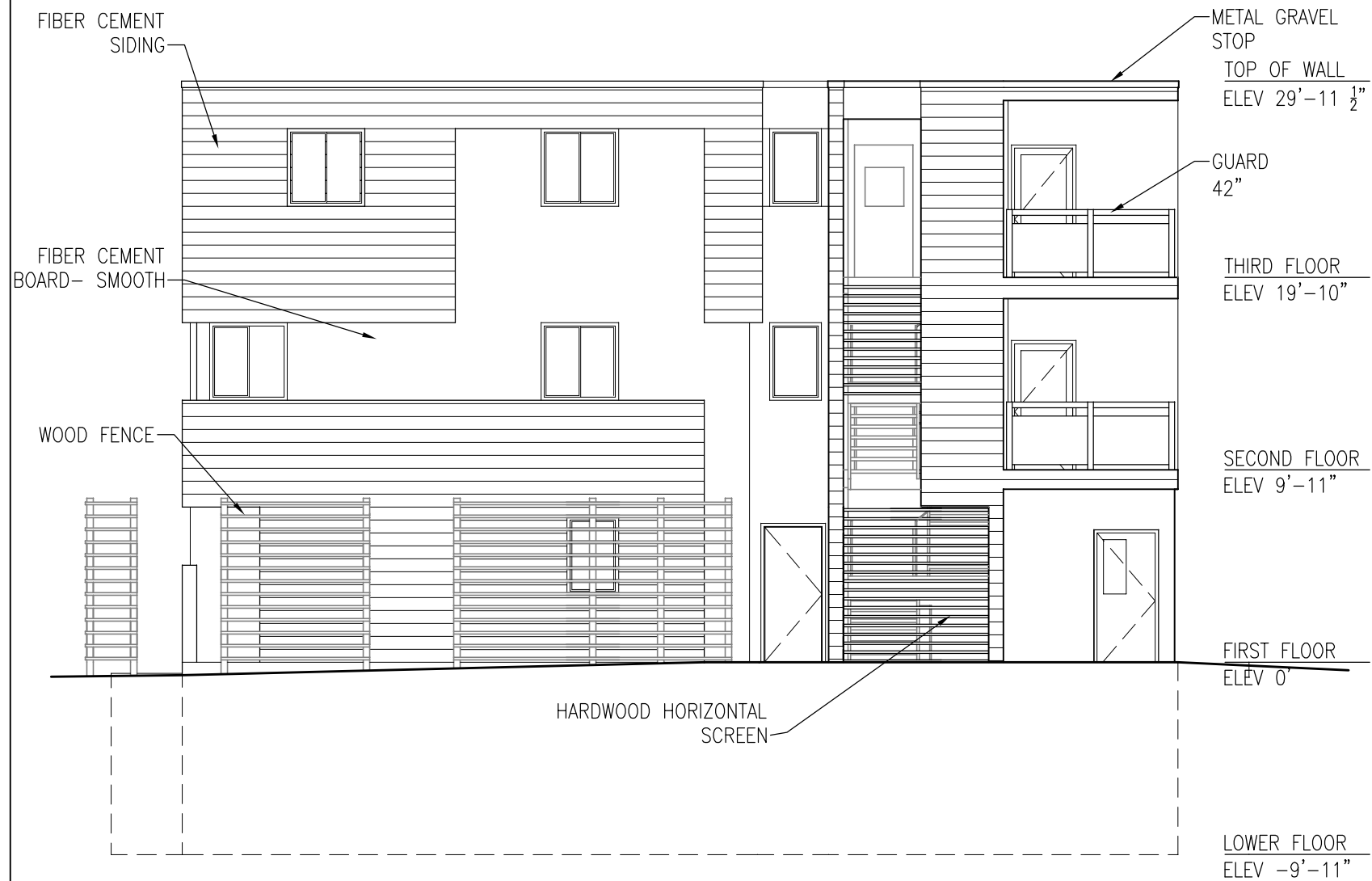
ARD EBERLE ARCHITECTS

Owner: Brandon Cook
115-117 South Bassett

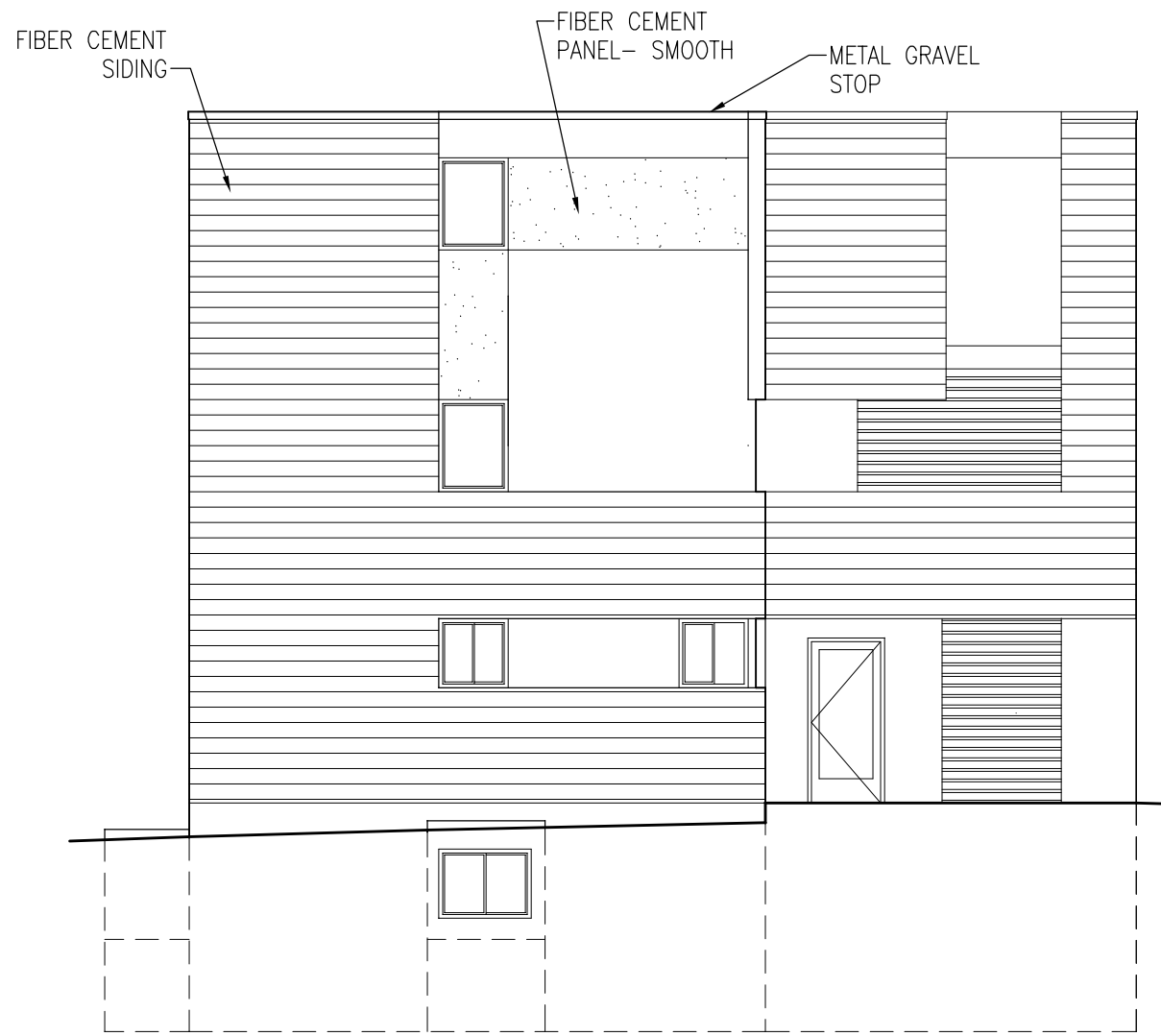
PUD-SIP
Bassett Apartments
Major Alt to Approved PUD

Date 12/1/2010

A2



1 **SOUTHWEST ELEVATION**
1/8" = 1'-0"



2 **NORTHWEST ELEVATION**
1/8" = 1'-0"

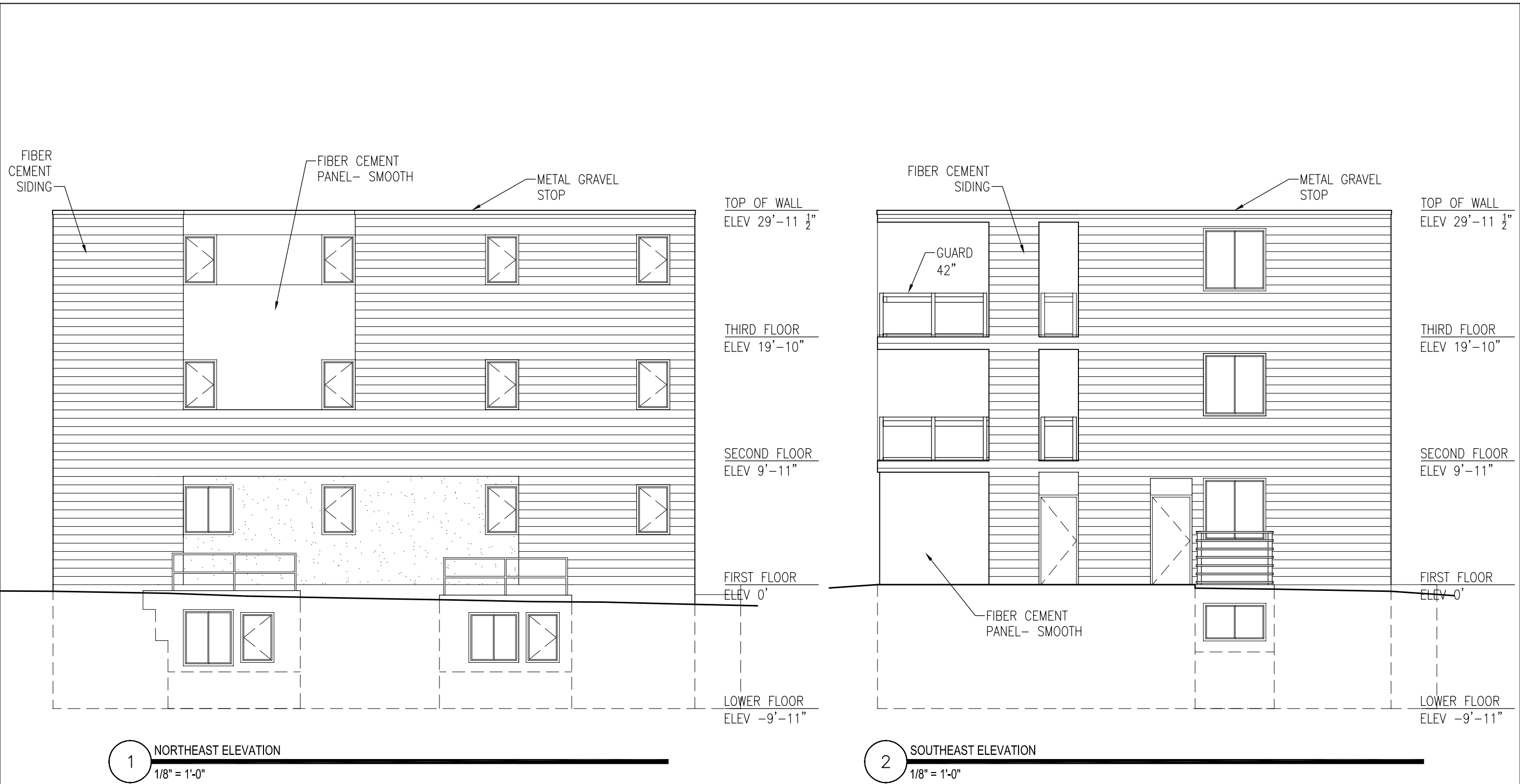


Owner: Brandon Cook
115-117 South Bassett

PUD-SIP
Bassett Apartments
Major Alt to Approved PUD

Date 12/1/2010

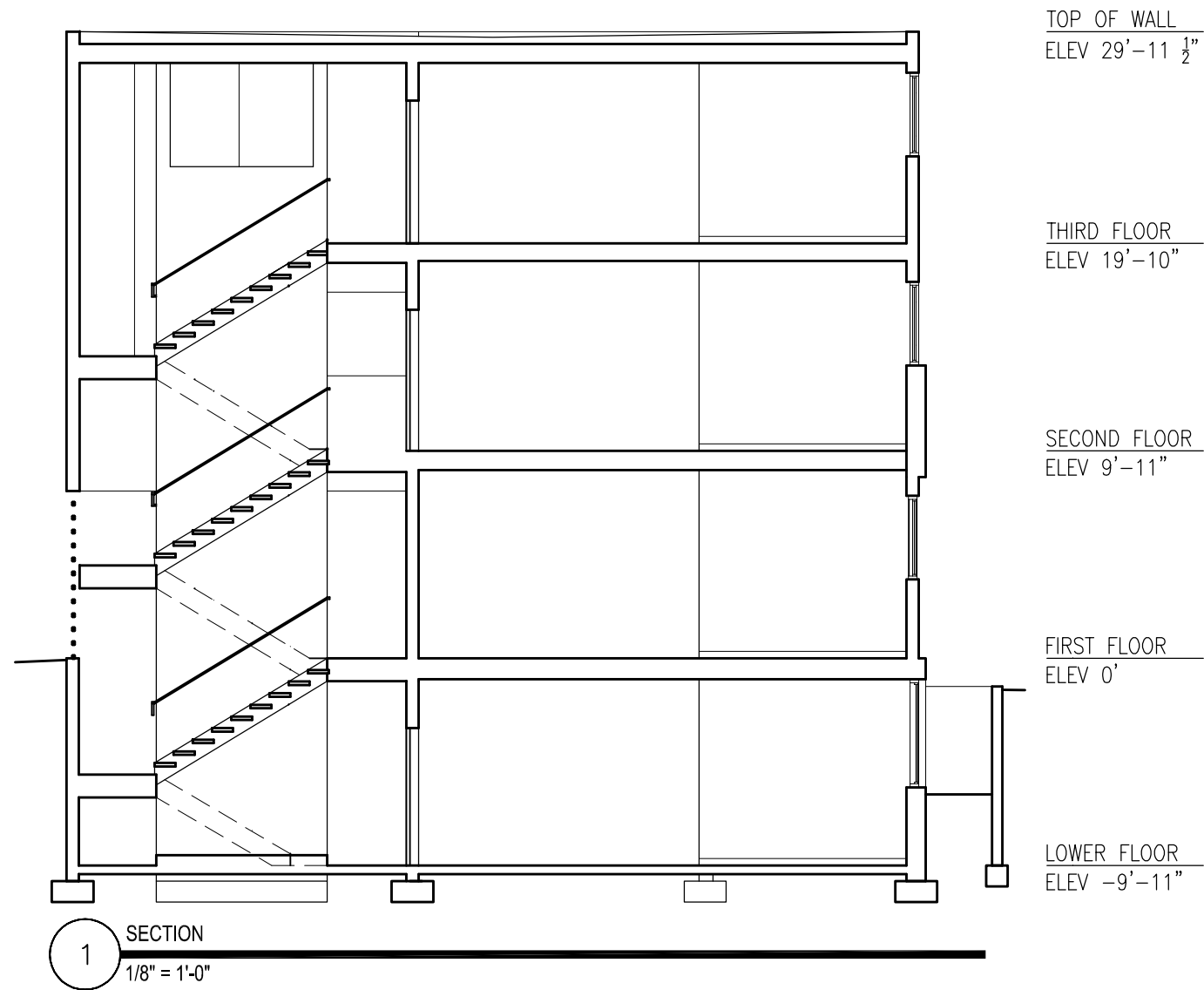
A3



Owner: Brandon Cook
 115-117 South Bassett

PUD-SIP
 Bassett Apartments
 Major Alt to Approved PUD

Date 12/1/2010
 A4



ARD EBERLE ARCHITECTS

Owner: Brandon Cook
115-117 South Bassett

PUD-SIP
Bassett Apartments
Major Alt to Approved PUD

Date 12/1/2010

A5



1 AERIAL VIEW FROM WEST



2 AERIAL VIEW FROM SOUTH



Owner: Brandon Cook
115-117 South Bassett

PUD-SIP
Bassett Apartments
Major Alt to Approved PUD

Date 12/1/2010

AG



1 VIEW FROM 115 S. BASSETT DRIVE- WEST



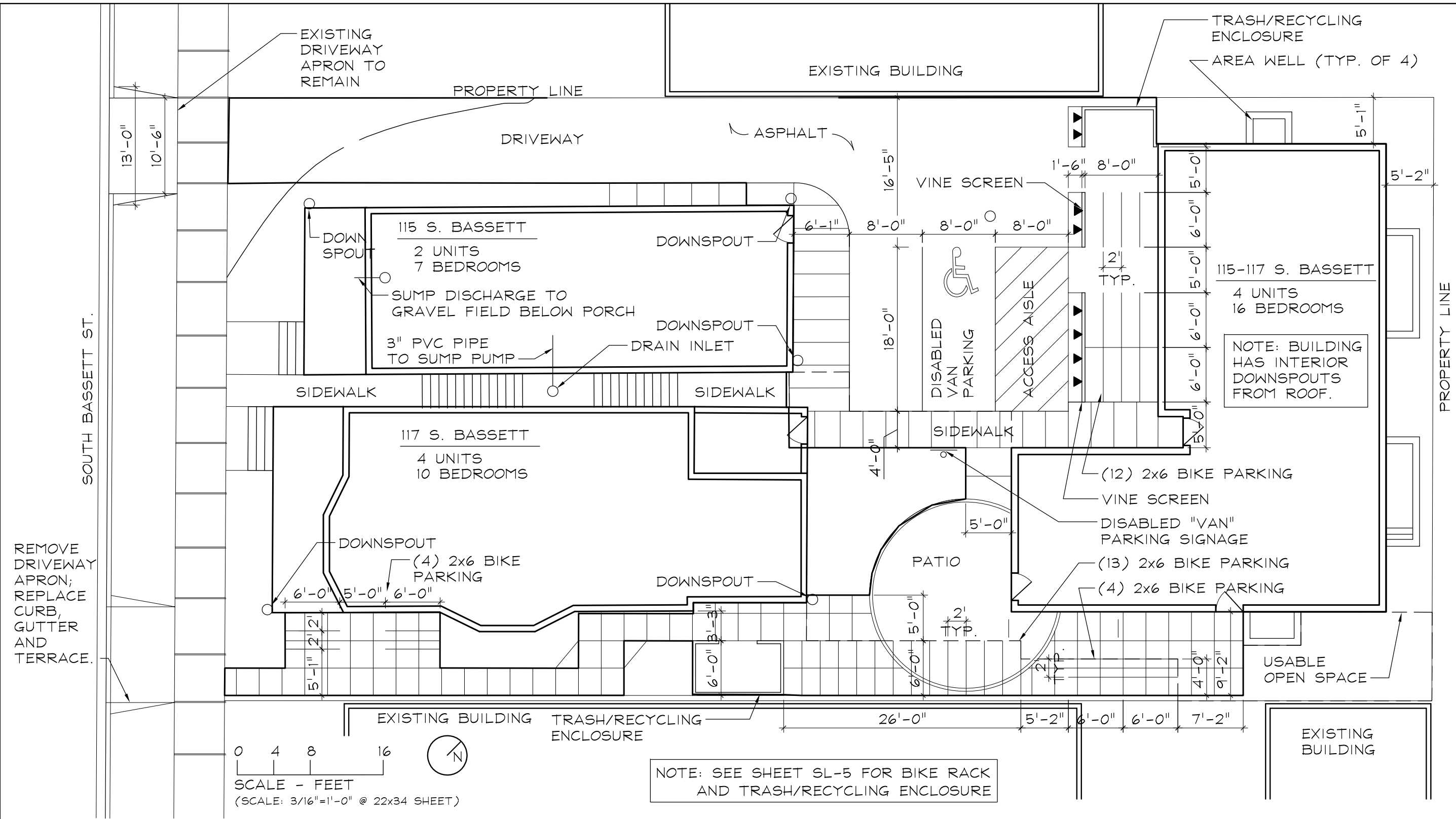
1 VIEW FROM NORTHWEST

ARD EBERLE ARCHITECTS

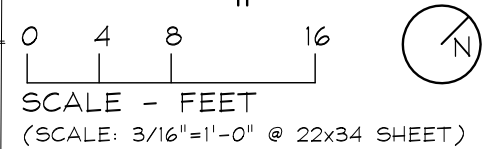
Owner: Brandon Cook
115-117 South Bassett

PUD-SIP
Bassett Apartments
Major Alt to Approved PUD

Date 12/1/2010
A7



REMOVE DRIVEWAY APRON; REPLACE CURB, GUTTER AND TERRACE.



NOTE: SEE SHEET SL-5 FOR BIKE RACK AND TRASH/RECYCLING ENCLOSURE

SITE STATISTICS

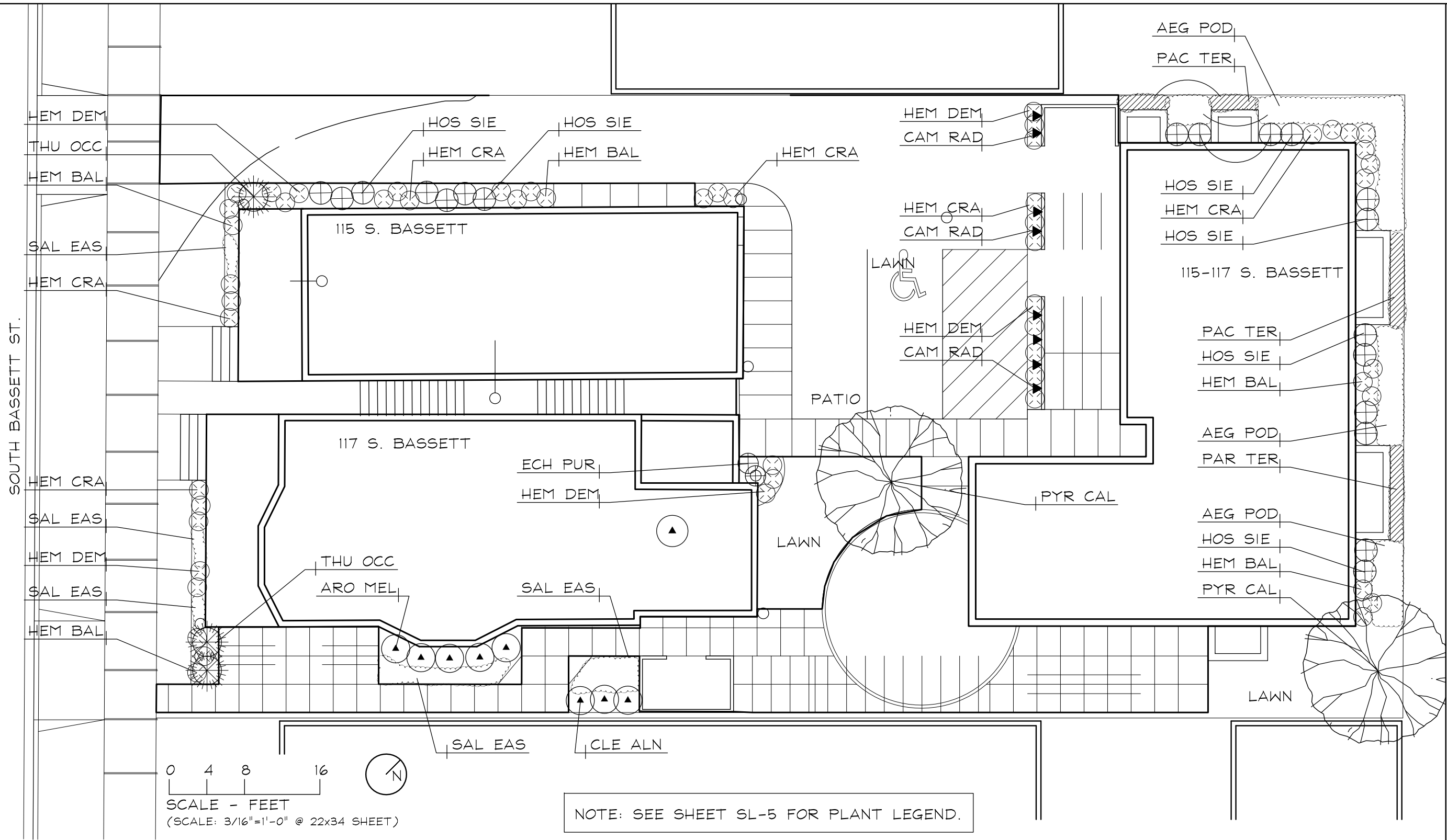
| | | | |
|---------------------------|----------|--------------------------------|-------|
| LOT SIZE: 8,750 SF | | USABLE OPEN SPACE | |
| EXISTING SITE | | USABLE OPEN SPACE AREA: 942 SF | |
| IMPERVIOUS SURFACE AREA: | 8,388 SF | USABLE OPEN SPACE RATIO: | 10.7% |
| IMPERVIOUS SURFACE RATIO: | 95.9% | TOTAL BEDROOMS (33 PROPOSED) | |
| PROPOSED SITE | | BIKE PARKING REQUIRED: | 33 |
| IMPERVIOUS SURFACE AREA: | 7,436 SF | BIKE PARKING PROVIDED: | 33 |
| IMPERVIOUS SURFACE RATIO: | 85% | | |

REVISIONS:

Bassett St.
Residential

115-117 South Bassett St.
Madison, WI
Site Layout Plan

December 8, 2010



REVISIONS:

Bassett St. Residential

115-117 South Bassett St.
Madison, WI

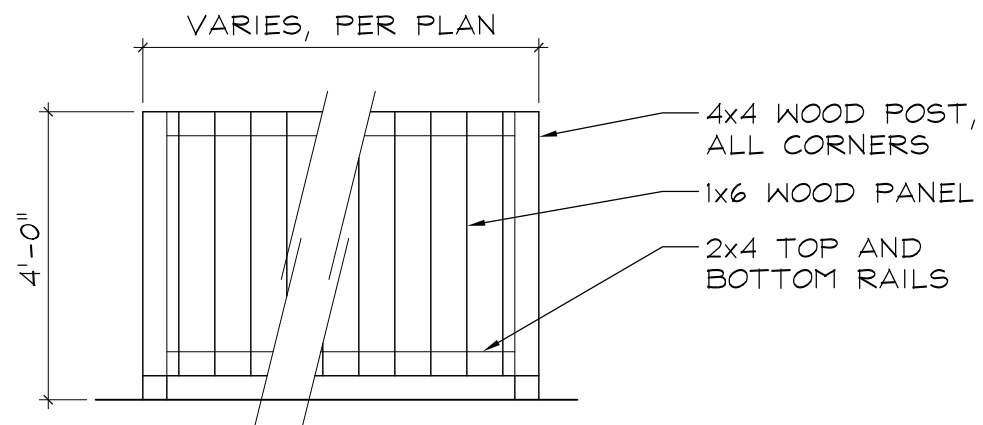
Landscape Plan

December 1, 2010

SL-4

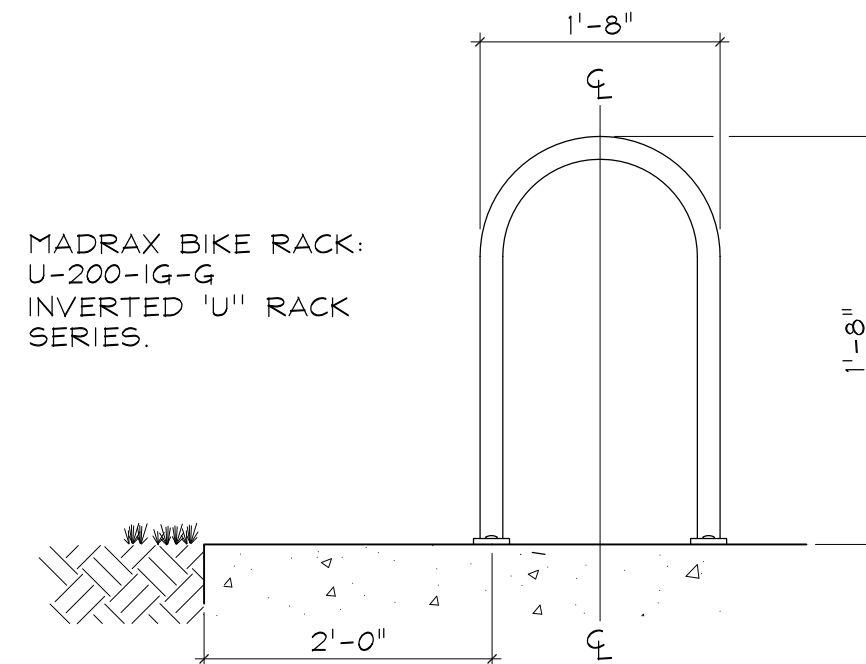
LANDSCAPE PLANT LEGEND

| Symbol | Botanical name | Common Name | Size | Root | Quantity | Comments |
|---------------------------------|---|-------------------------------|---------|-------|----------|---------------------|
| TREES | | | | | | |
| PYR CAL | <i>Pyrus calleryana</i> | Callery Pear | 2" Cal. | B#B | 2 | |
| EVERGREEN TREES/SHRUBS | | | | | | |
| THU OCC | <i>Thuja occidentalis</i> 'Smaragd' | Emerald Green Arborvitae | 4' Ht. | Cont. | 3 | |
| DECIDUOUS SHRUBS | | | | | | |
| ARO MEL | <i>Aronia melanocarpa</i> 'Autumn Magic' | Autumn Magic Black Chokeberry | 5 Gal. | Cont. | 5 | |
| CLE ALN | <i>Clethra Alnifolia</i> 'Hummingbird' | Hummingbird Summersweet | 5 Gal. | Cont. | 3 | |
| PERENNIALS / GROUNDCOVER / VINE | | | | | | |
| AEG POD | <i>Aegopodium podagraria</i> 'Variegatum' | Bishop's Weed | 4' Pot | Cont. | | Plant at 12" O.C. |
| CAM RAD | <i>Campsis radicans</i> | Trumpet creeper | 3 Gal. | Cont. | 8 | |
| ECH PUR | <i>Echinacea purpurea</i> 'Ruby Star' | Ruby Star Coneflower | 3 Gal. | Cont. | 2 | |
| HEM BAL | <i>Hemerocallis</i> 'Baltimore Oriole' | Baltimore Oriole | 3 Gal. | Cont. | 15 | Red/Orange Flowers |
| HEM CRA | <i>Hemerocallis</i> 'Cradle of Liberty' | Cradle of Liberty | 3 Gal. | B#B | 11 | Scarlet Red Flowers |
| HEM DEM | <i>Hemerocallis</i> 'Demetrius' | Demetrius Daylily | 3 Gal. | Cont. | 12 | Yellow Flowers |
| HOS SIE | <i>Hosta sieboldiana</i> 'Elgans' | Elgans Hosta | 3 Gal. | Cont. | 19 | Blue/Green Leaves |
| PAC TER | <i>Pachysandra terminalis</i> | Pachysandra | 4' Pot | Cont. | | Plant at 12" O.C. |
| SAL EAS | <i>Salvia</i> 'East Friesland' | East Friesland Salvia | 4' Pot | Cont. | | Plant at 12" O.C. |



TRASH / RECYCLING ENCLOSURE

N.T.S.



BIKE RACK

N.T.S.

REVISIONS:

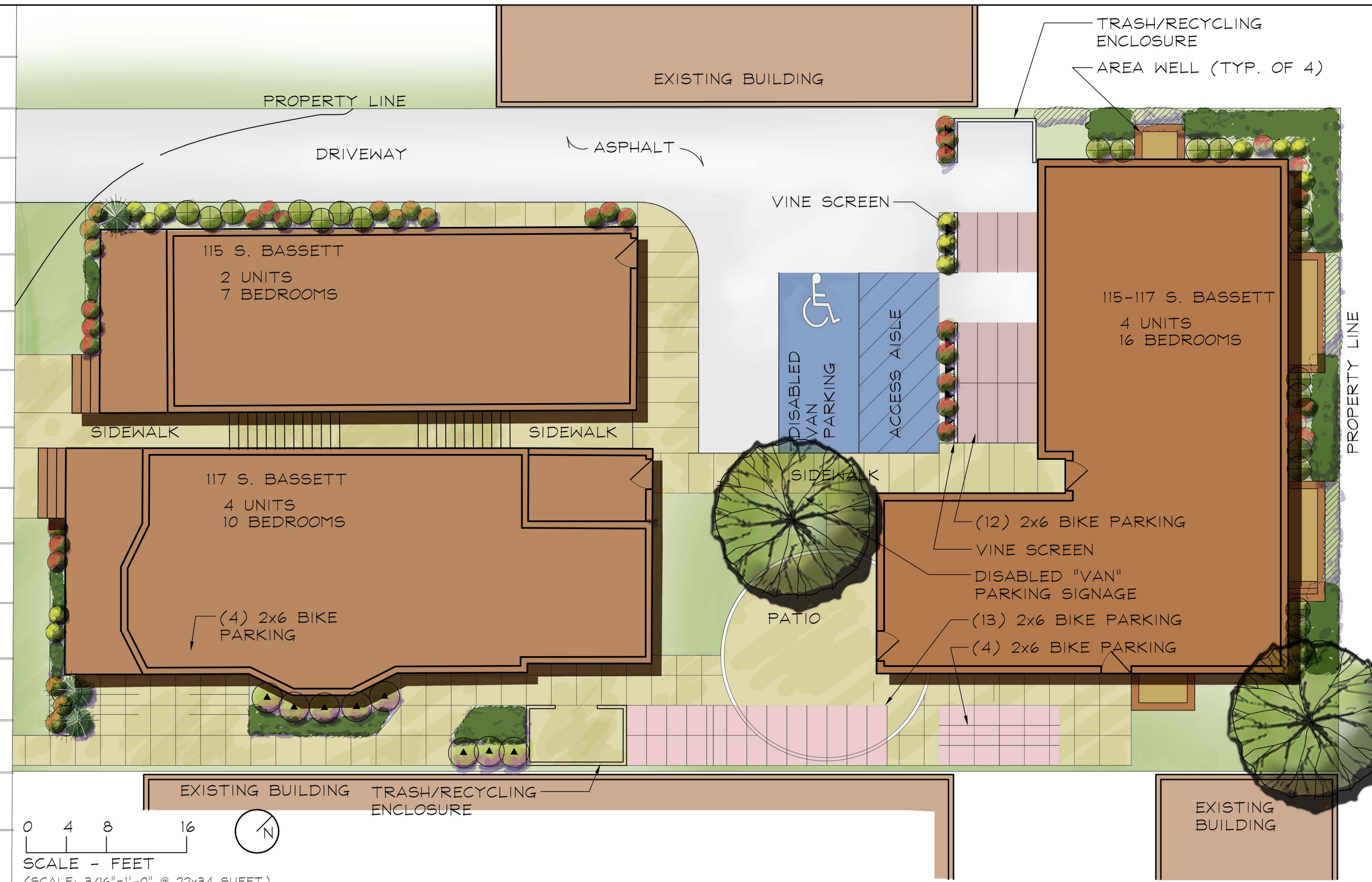
Bassett St. Residential

115-117 South Bassett St.
Madison, WI

Landscape Legend

December 1, 2010

SOUTH BASSETT ST.



0 4 8 16
SCALE - FEET
(SCALE: 3/16"=1'-0" @ 22x34 SHEET)

SITE STATISTICS

| | | | |
|---------------------------|----------|--------------------------------|-------|
| LOT SIZE: 8,750 SF | | USABLE OPEN SPACE | |
| EXISTING SITE | | USABLE OPEN SPACE AREA: 942 SF | |
| IMPERVIOUS SURFACE AREA: | 8,388 SF | USABLE OPEN SPACE RATIO: | 10.7% |
| IMPERVIOUS SURFACE RATIO: | 95.9% | TOTAL BEDROOMS (33 PROPOSED) | |
| PROPOSED SITE | | BIKE PARKING REQUIRED: | 33 |
| IMPERVIOUS SURFACE AREA: | 7,436 SF | BIKE PARKING PROVIDED: | 33 |
| IMPERVIOUS SURFACE RATIO: | 85% | | |

REVISIONS:

Bassett St.
Residential

115-117 South Bassett St.
Madison, WI

Illustrative Site Plan

December 8, 2010