

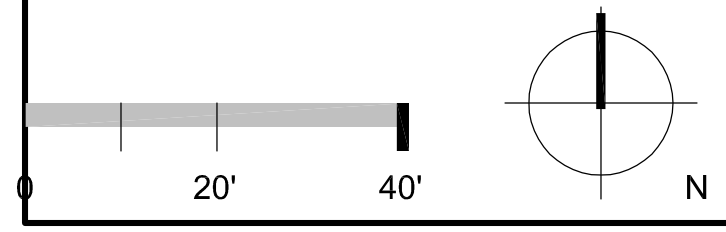
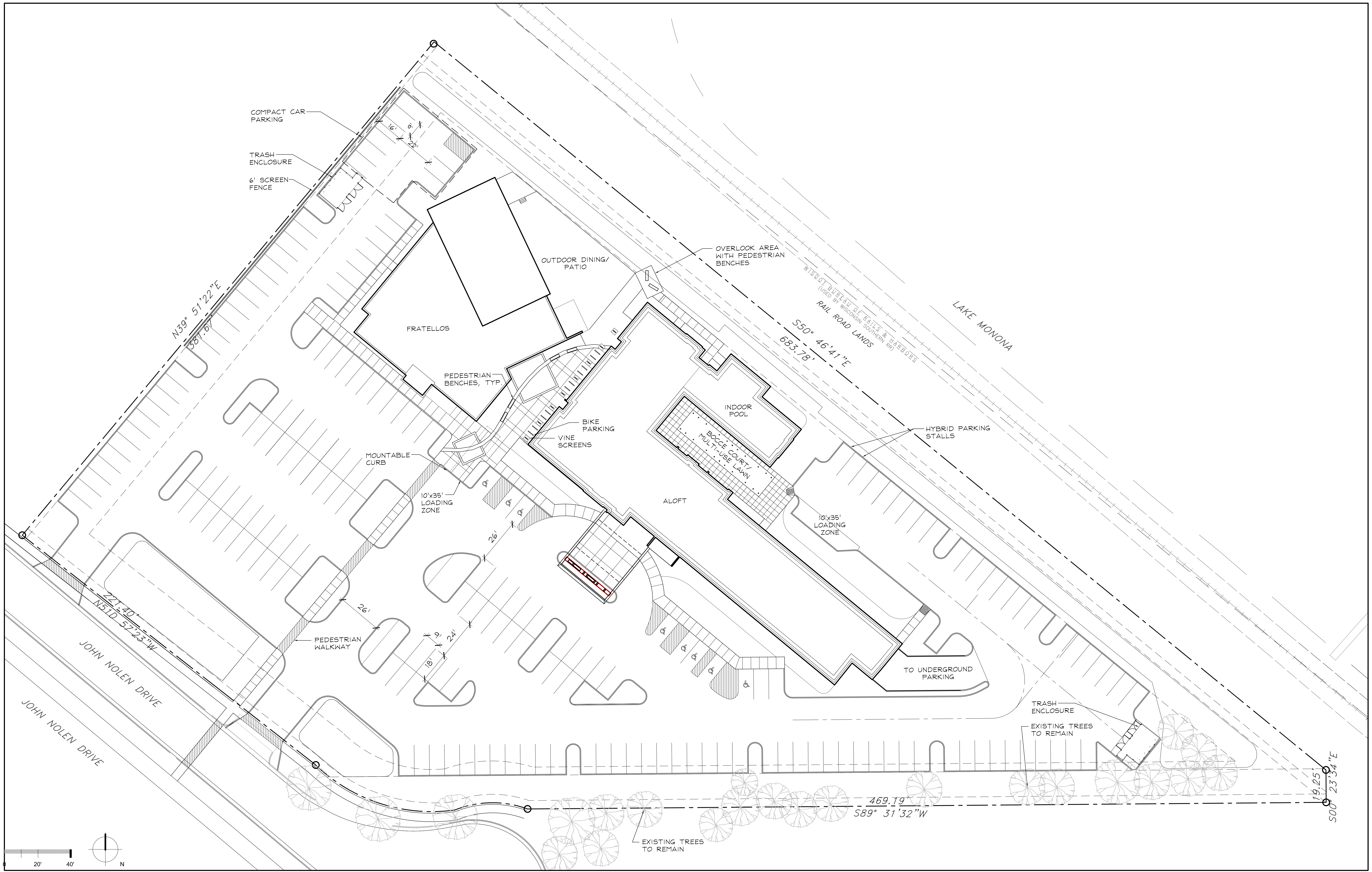


822-844 John Nolen Drive
Madison, Wisconsin

Urban Design Commission

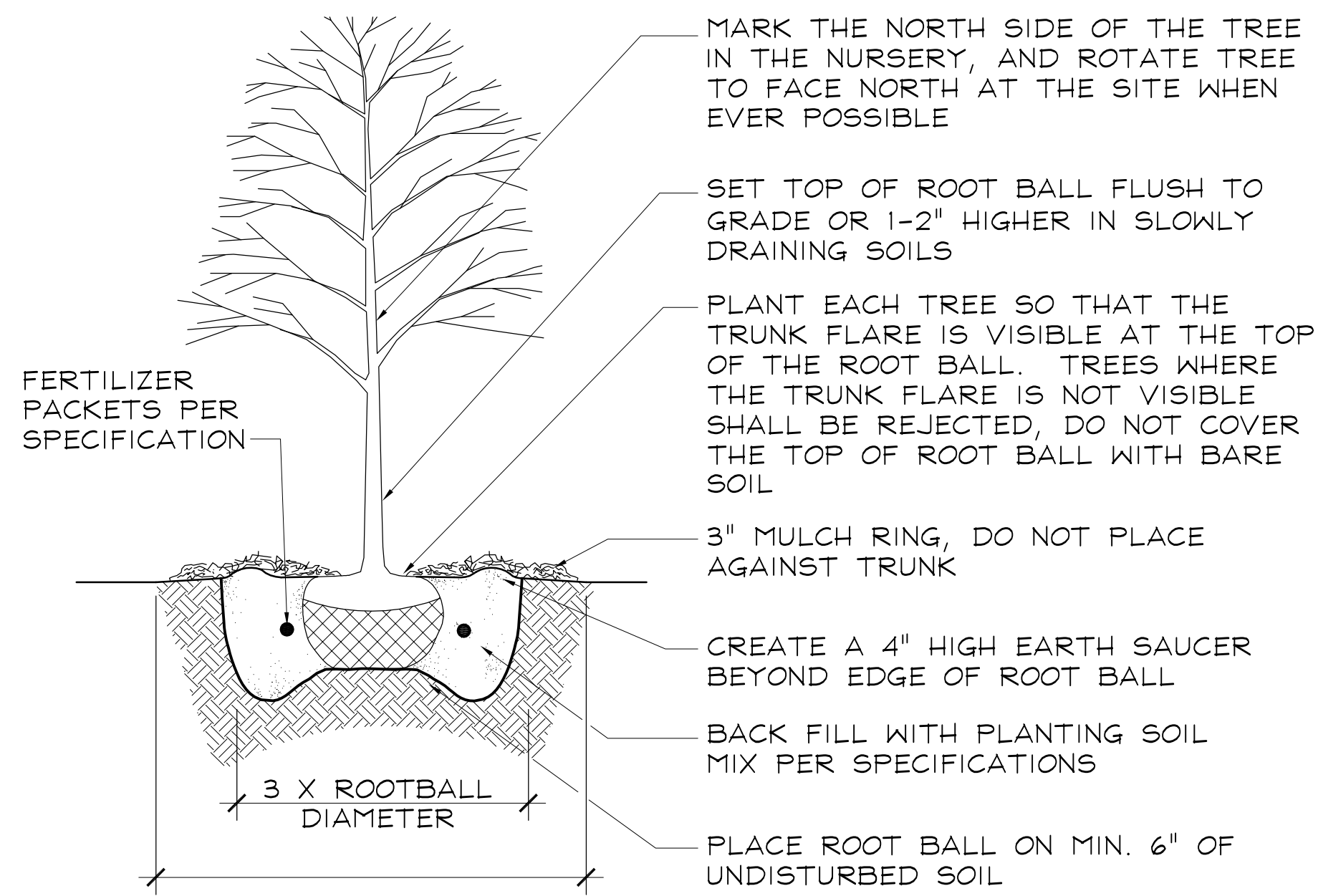
Submittal Date: 16 July 2008

Meeting Date: 23 July 2008

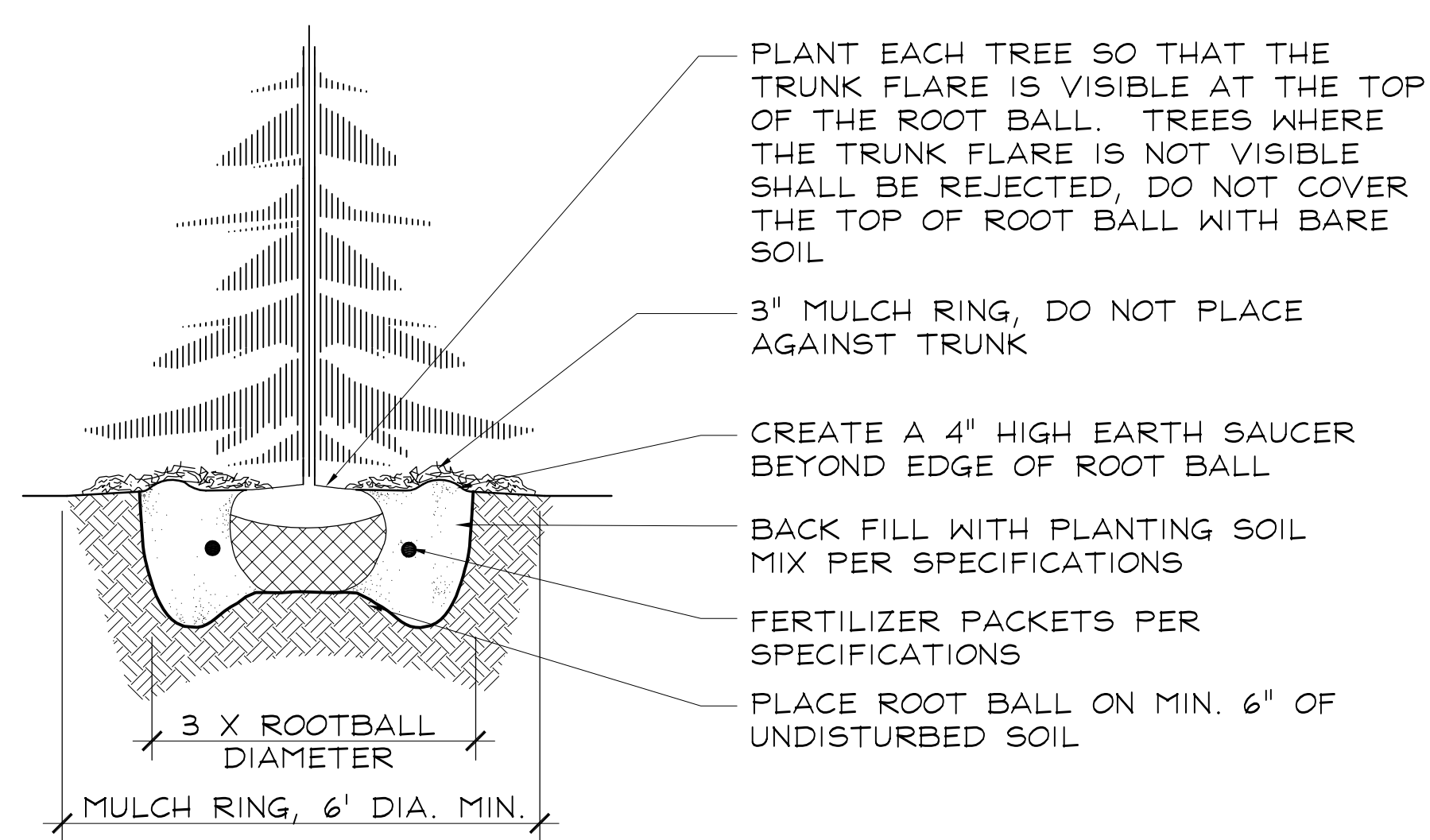


L-3 SITE PLAN

DECIDUOUS TREE



EVERGREEN TREE

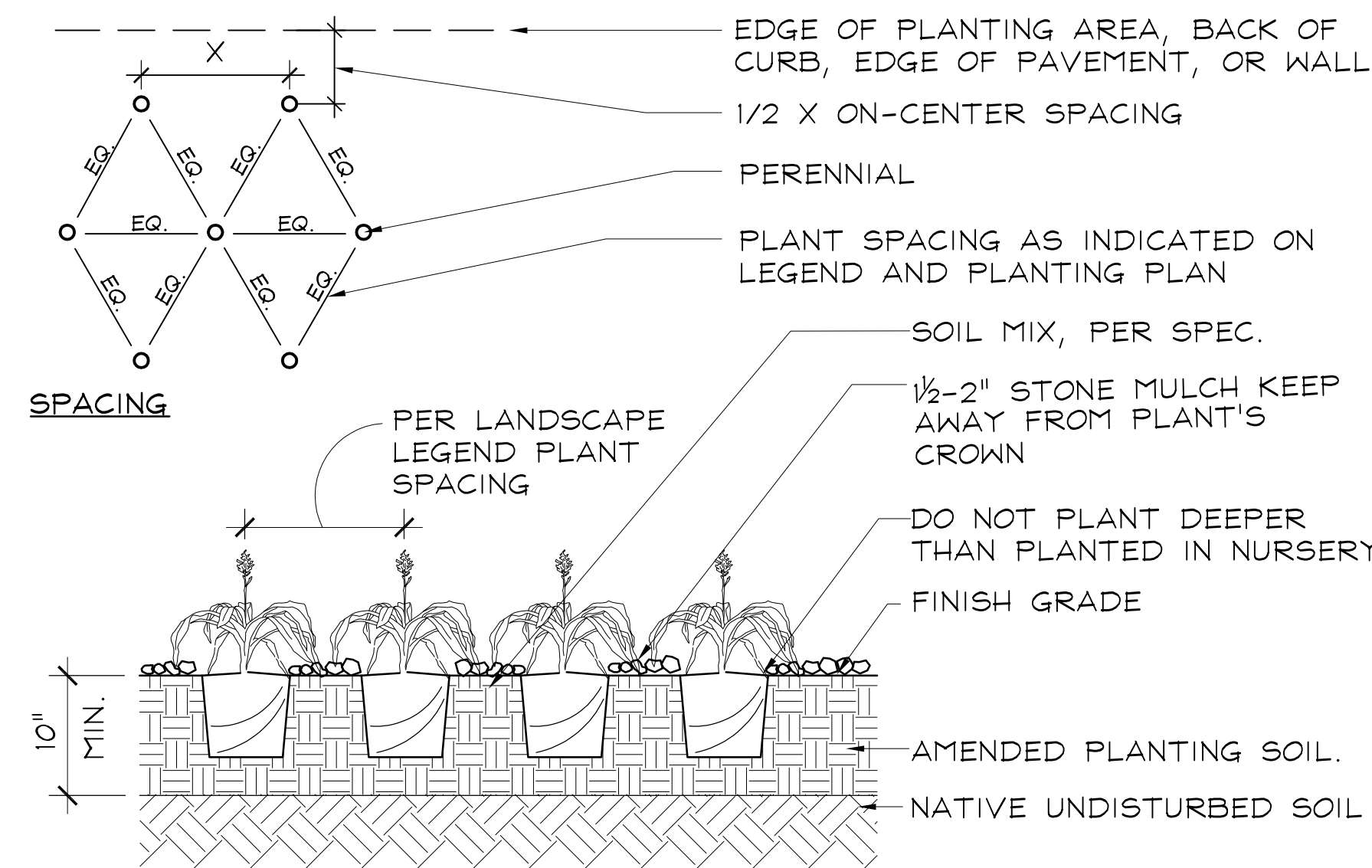


NOTES:

- DO NOT HEAVILY PRUNE THE TREE AT PLANTING, PRUNE ONLY CROSSOVER LIMBS, CO-DOMINANT LEADERS, AND BROKEN OR DEAD BRANCHES. SOME INTERIOR TWIGS AND LATERAL BRANCHES MAY BE PRUNED; HOWEVER, DO NOT REMOVE THE TERMINAL BUDS OF BRANCHES THAT EXTEND TO THE EDGE OF THE CROWN
- STAKE TREES ONLY UPON THE APPROVAL OF THE LANDSCAPE ARCHITECT-SEE STAKING DETAILS
- WRAP TREE TRUNKS ONLY UPON THE APPROVAL OF THE LANDSCAPE ARCHITECT-SEE WRAPPING DETAIL
- IF PLANT IS SHIPPED WITH A WIRE BASKET AROUND THE ROOT BALL, CUT THE WIRE BASKET IN FOUR PLACES AND FOLD DOWN 6" INTO THE PLANTING HOLE
- REMOVE ALL TWINE, ROPE/WIRE, AND BURLAP FROM TOP HALF OF ROOT BALL
- REFER TO SPECIFICATIONS FOR FURTHER INFORMATION

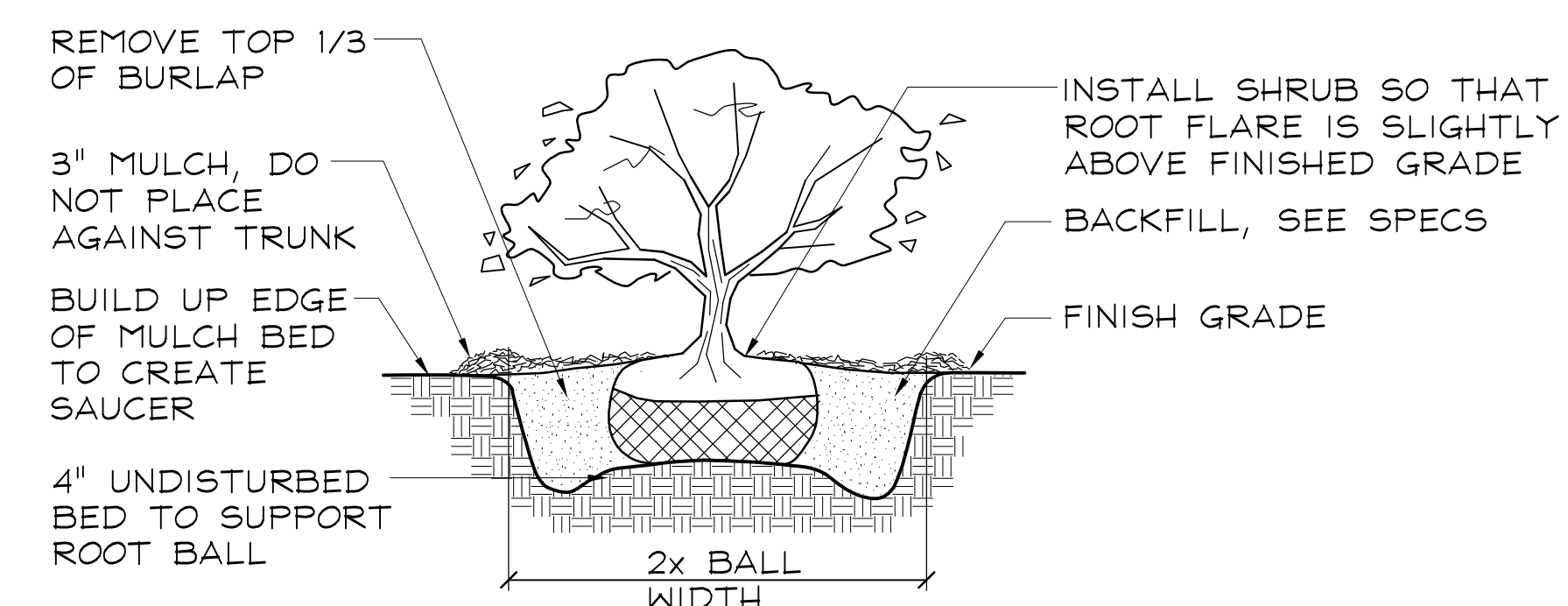
4 B#B TREE PLANTING DETAILS

SCALE 1" = 1'-0"



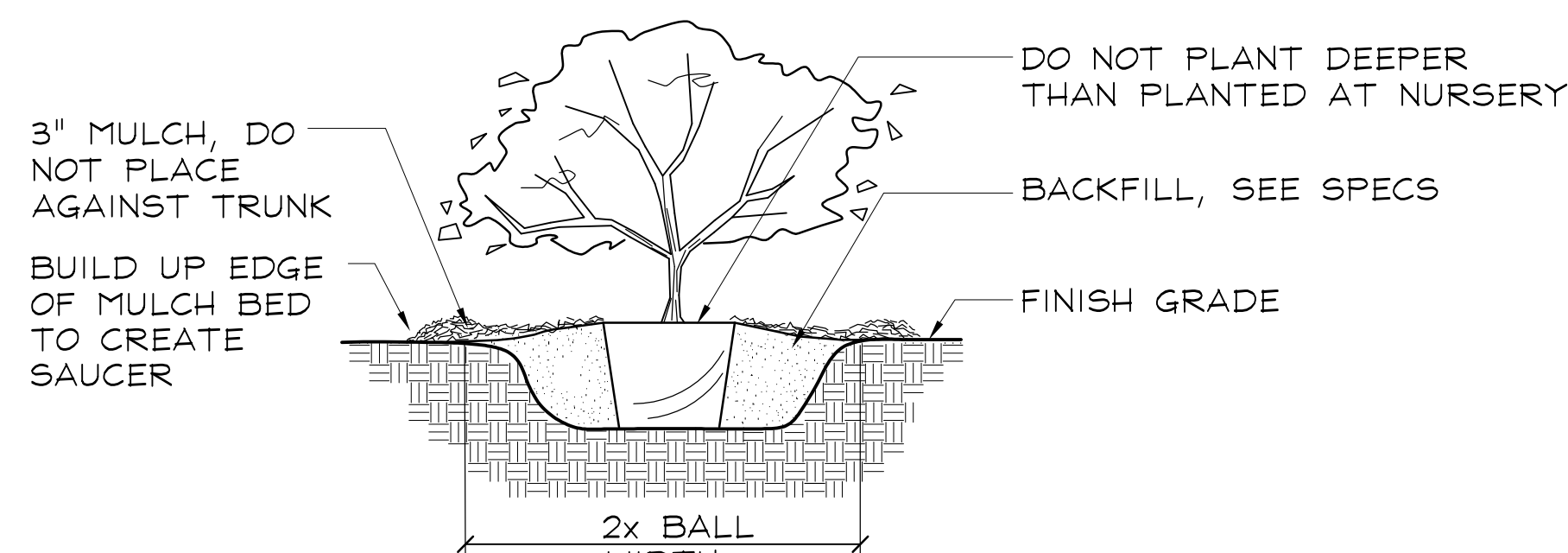
1 PERENNIAL PLANTING

SCALE 1" = 1'-0"



2 B#B SHRUB PLANTING

SCALE 1" = 1'-0"



3 CONTAINER SHRUB PLANTING

SCALE 1" = 1'-0"

LANDSCAPE PLANT LEGEND

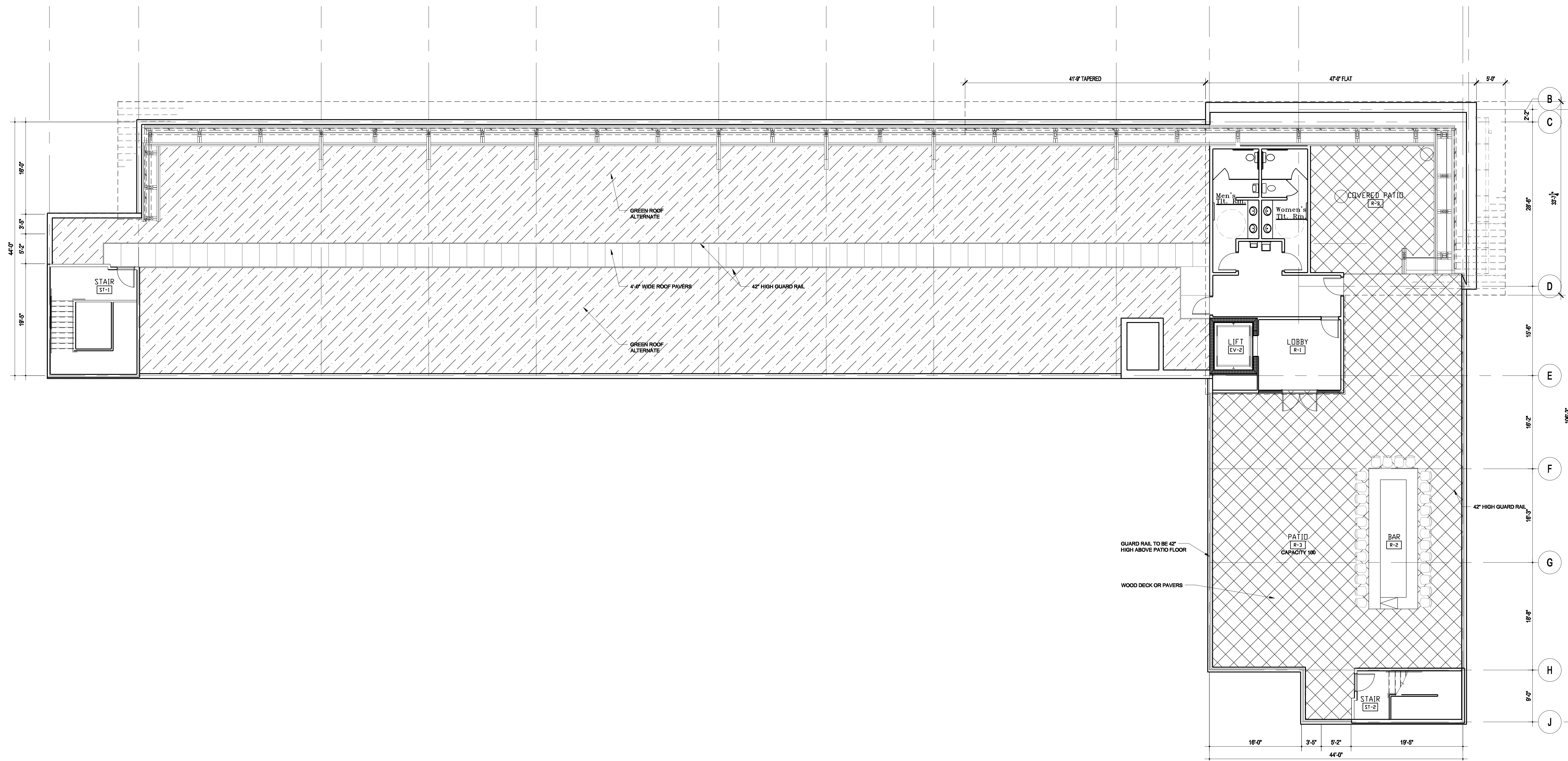
Symbol	Botanical name	Common Name	Size	Root	Quantity	Comments
DECIDUOUS TREES						
AF	<i>Acer freemanii</i> 'Autumn Blaze'	Autumn Blaze Maple	2.5" Cal.	B#B	10	Single stem
AG	<i>Amelanchier x grandiflora</i> 'Autumn Brilliance'	Autumn Brilliance Serviceberry	1.5" Cal.	B#B	4	Multi-stem
GD	<i>Gymnocladus dioica</i>	Kentucky Coffeetree	2.5" Cal.	B#B	10	
GT	<i>Gleditsia triacanthos</i> 'Skyline'	Skyline Honeylocust	2.5" Cal.	B#B	4	
PC	<i>Pyrus calleryana</i> 'Chanticleer'	Chanticleer Callery Pear	2.5" Cal.	B#B	18	
QM	<i>Quercus muehlenbergii</i>	Chinkapin Oak	2.5" Cal.	B#B	5	
PN	<i>Populus nigra</i> 'Italica'	Lombardi Poplar	1.5" Cal.	B#B	10	Matched sizes

EVERGREEN TREES						
PG	<i>Picea glauca</i> var. <i>densata</i>	Black Hills Spruce	8-10'	B#B	1	

EVERGREEN SHRUBS						
Js	<i>Juniperus</i> 'Andorra Compacta'	Compact Andorra Juniper	#3	CG	97	Low, spreading
Jv	<i>Juniperus virginiana</i> 'Grey Owl'	Grey Owl Juniper	#3	CG	9	Spreading
Jr	<i>Juniperus scopulorum</i> 'Skyrocket'	Skyrocket Juniper	#3	CG	9	Upright
Md	<i>Microbiota decussata</i>	Siberian Cypress	#5	CG	4	Spreading
Tm	<i>Taxus x media</i> 'Tauntoni'	Taunton Yew	#5	CG	21	Spreading
To	<i>Thuja occidentalis</i> 'Emerald'	Emerald Arborvitae	#5	CG	7	Matched sizes

DECIDUOUS SHRUBS						
Cl	<i>Clethra alnifolia</i> 'Hummingbird'	Hummingbird Clethra	3 Gal.	CG	30	
Cm	<i>Cornus mas</i> 'Golden Glory'	Corneliancherry Dogwood	2 Gal.	CG	7	Matched sizes
Cc	<i>Caryopteris clandonensis</i>	Blue Mist Spirea	2 Gal.	CG	17	
Dl	<i>Diervilla lonicera</i>	Dwarf Bush Honeysuckle	3 Gal.	CG	30	
Ha	<i>Hydrangea arborescens</i> 'Annabelle'	Annabelle Hydrangea	3 Gal.	CG	16	
Iv	<i>Itea virginica</i> 'Little Henry'	Little Henry Sweetspire	3 Gal.	CG	39	
Ra	<i>Rhus aromatica</i> 'Gra-Low'	Gra-Low Fragrant Sumac	2 Gal.	CG	85	
Rd	<i>Rosa</i> 'Dwarf Pavement'	Dwarf Pavement Rose	2 Gal.	CG	15	
Rf	<i>Rosa</i> 'Foxi Pavement'	Foxi Pavement Rose	2 Gal.	CG	20	
Sp	<i>Salix purpurea</i> 'Nana'	Dwarf Arctic Blue Willow	3 Gal.	CG	23	
Sa	<i>Spiraea x bumalda</i> 'Anthony Waterer'	Anthony Waterer Spirea	2 Gal.	CG	8	
Ss	<i>Spiraea japonica</i> 'Shirobana'	Shirobana Spirea	3 Gal.	CG	16	
Sv	<i>Syringa vulgaris</i> 'Charles Joly'	Charles Joly Lilac	5 Gal.	CG	4	
Vj	<i>Viburnum x juddii</i>	Judd Viburnum	5 Gal.	CG	10	

PERENNIALS / GROUNDCOVERS / GRASSES / VINES						
ap	<i>Artemisia</i> 'Powis Castle'	Powis Castle Artemisia	4"	CG	6	
dc	<i>Deschampsia caespitosa</i>	Tufted Hair Grass	4"	CG	13	
ep	<i>Echinacea purpurea</i>	Purple Coneflower	4"	CG	7	
hb	<i>Hosta</i> 'Blue Angel'	Blue Angel Hosta	4"	CG	6	
he	<i>Heuchera</i> 'Silver Scrolls'	Silver Scrolls Coral Bells	4"	CG	12	
hl	<i>Humulus lupulus</i> 'Aureus'	Golden Hops Vine	4"	CG	16	
hs	<i>Helictotrichon sempervirens</i>	Blue Oat Grass	1 Gal.	CG	15	
li	<i>Liriope spicata</i>	Creeping Lilyturf	4"	CG	70	
ls	<i>Liatris spicata</i> 'Kobold'	Kobold Gayfeather	1 Gal.	CG	19	
ms	<i>Miscanthus sinensis</i> 'Malepartus'	Malepartus Maiden Grass	1 Gal.	CG	37	
nf	<i>Nepeta faassenii</i> 'Walker's Low'	Walker's Low Catmint	4"	CG	40	
pt	<i>Pachysandra terminalis</i>	Pachysandra	4"	CG	32	
rf	<i>Rudbeckia fulgida</i> var. <i>sullivantii</i> 'Goldsturm'	Goldsturm Black Eyed Susan	4"	CG	20	
en	<i>Salvia nemerosa</i> 'May Night'	May Night Salvia	4"	CG	7	
sh	<i>Sporobolus heterolepis</i>	Prairie Dropseed	1 Gal.	CG	54	



1
A104
ROOF PLAN
1/8" = 1'-0"
NORTH

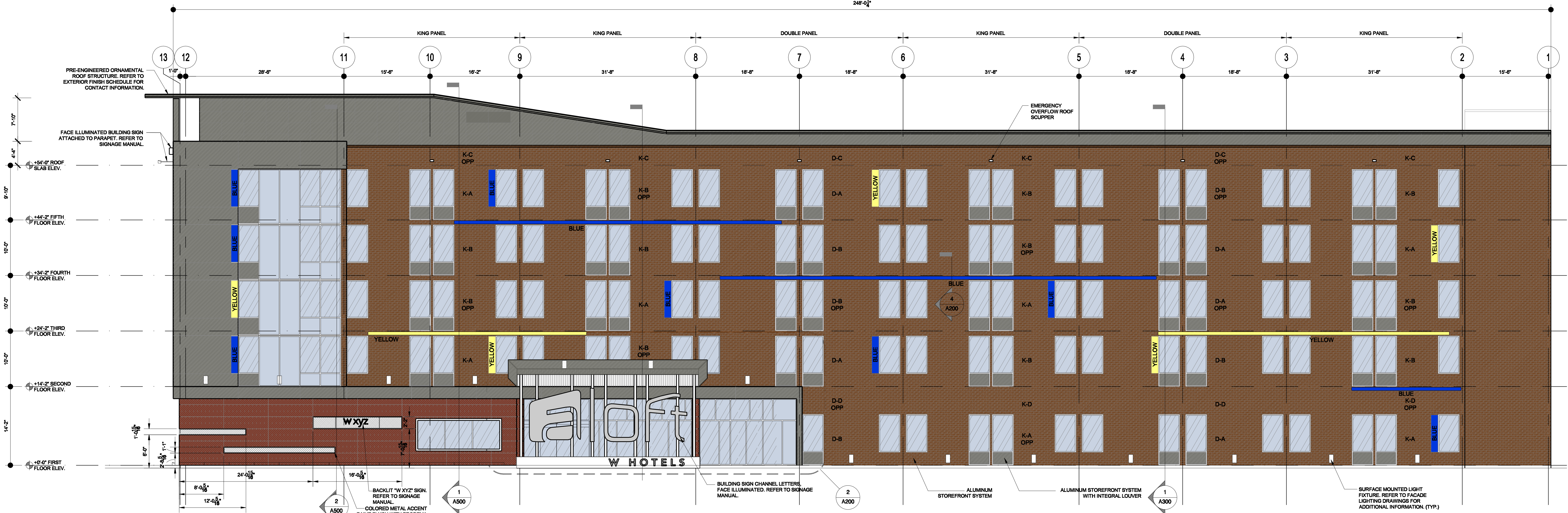


Image Name

FINISH MATERIAL LEGEND		
SPANDREL GLASS	4" UTILITY BRICK - SIOUX CITY BRICK & TILE COMPANY TOASTED FINE ART SMOOTH	
VISION GLASS	ACM (ALUMINUM COMPOSITE MATERIAL) COLOR TO BE HONDA GRAY	
METAL PANEL SYSTEM	ALUM. LOUVER IN (WINDOW SYSTEM) PAINT TO MATCH BRICK	
PRODEMA COLOR TO BE RUSTIK	COLD-CATHODE LIGHT STRIPS	
COLORLED METAL ACCENT PANELS SEE ELEVATION FOR COLORS		



3 SOUTH ELEVATION
1/8" = 1'-0"



1 EAST ELEVATION
1/8" = 1'-0"



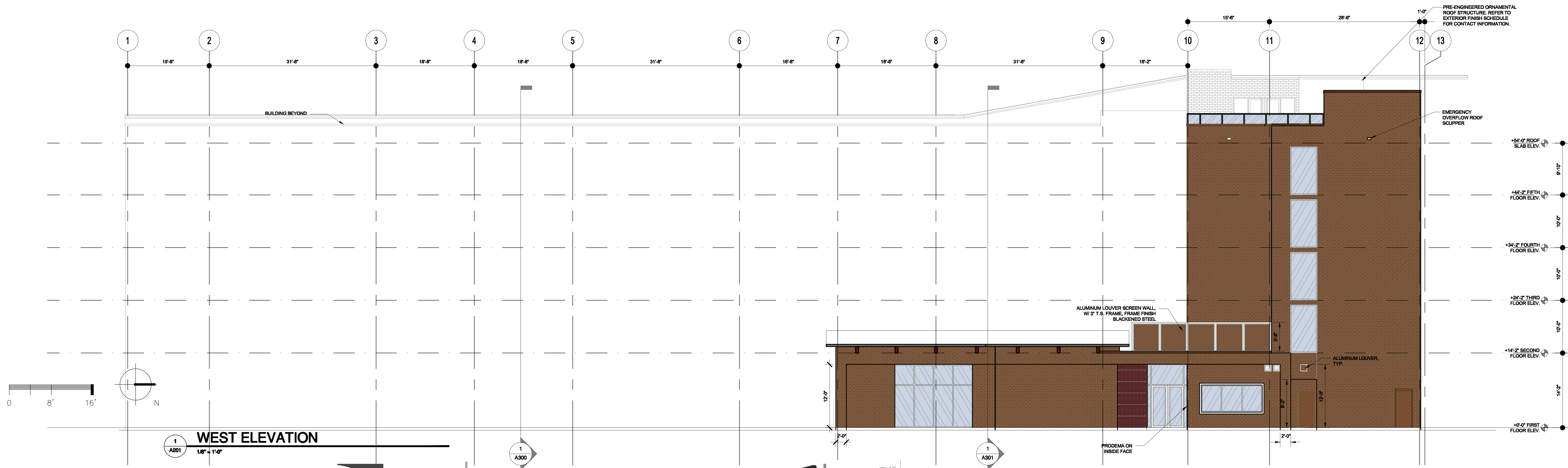
Image Name

SHEET NAME
ELEVATIONS A-8

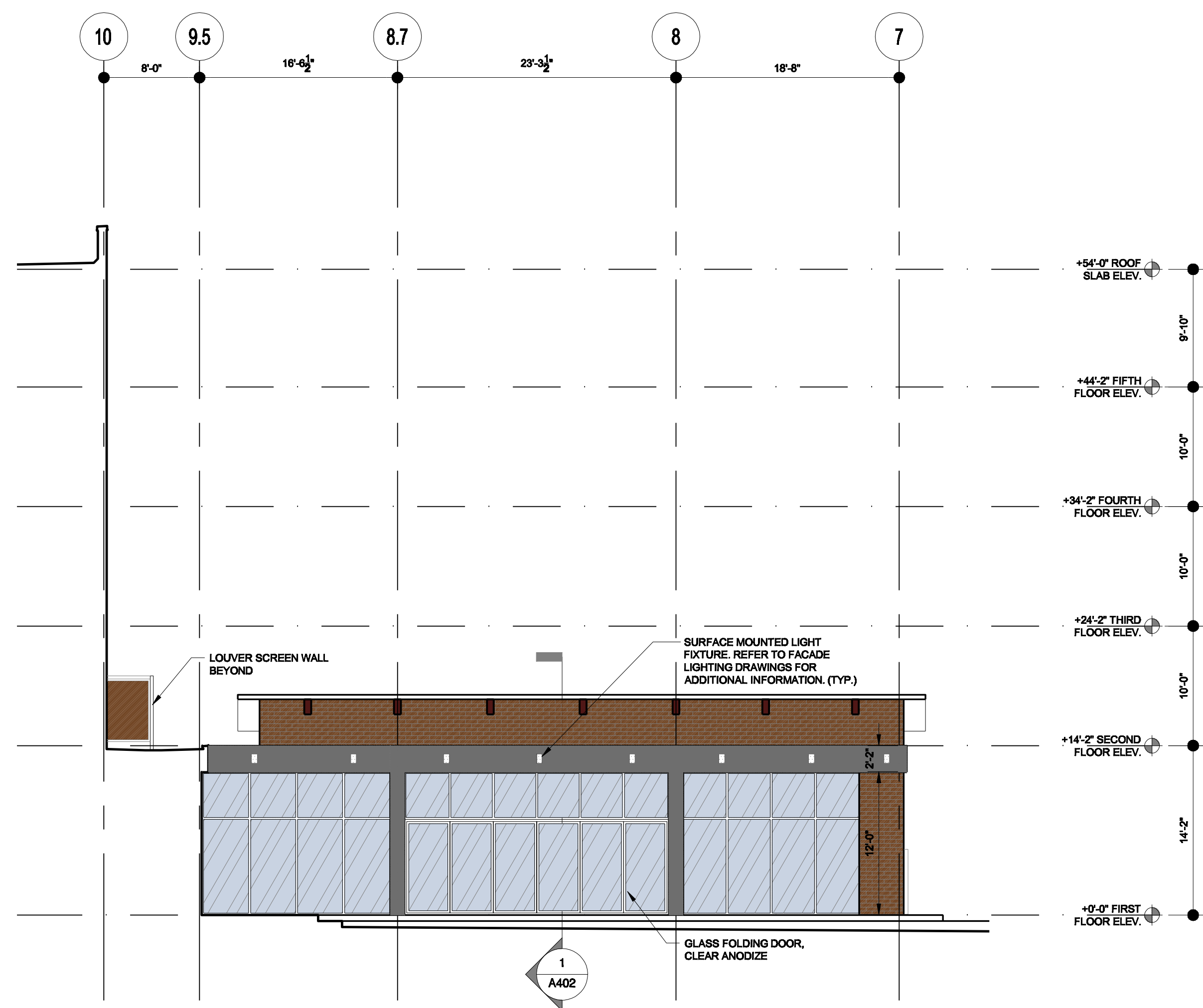


2 WEST ELEVATION @ BACK
1/8" = 1'-0"

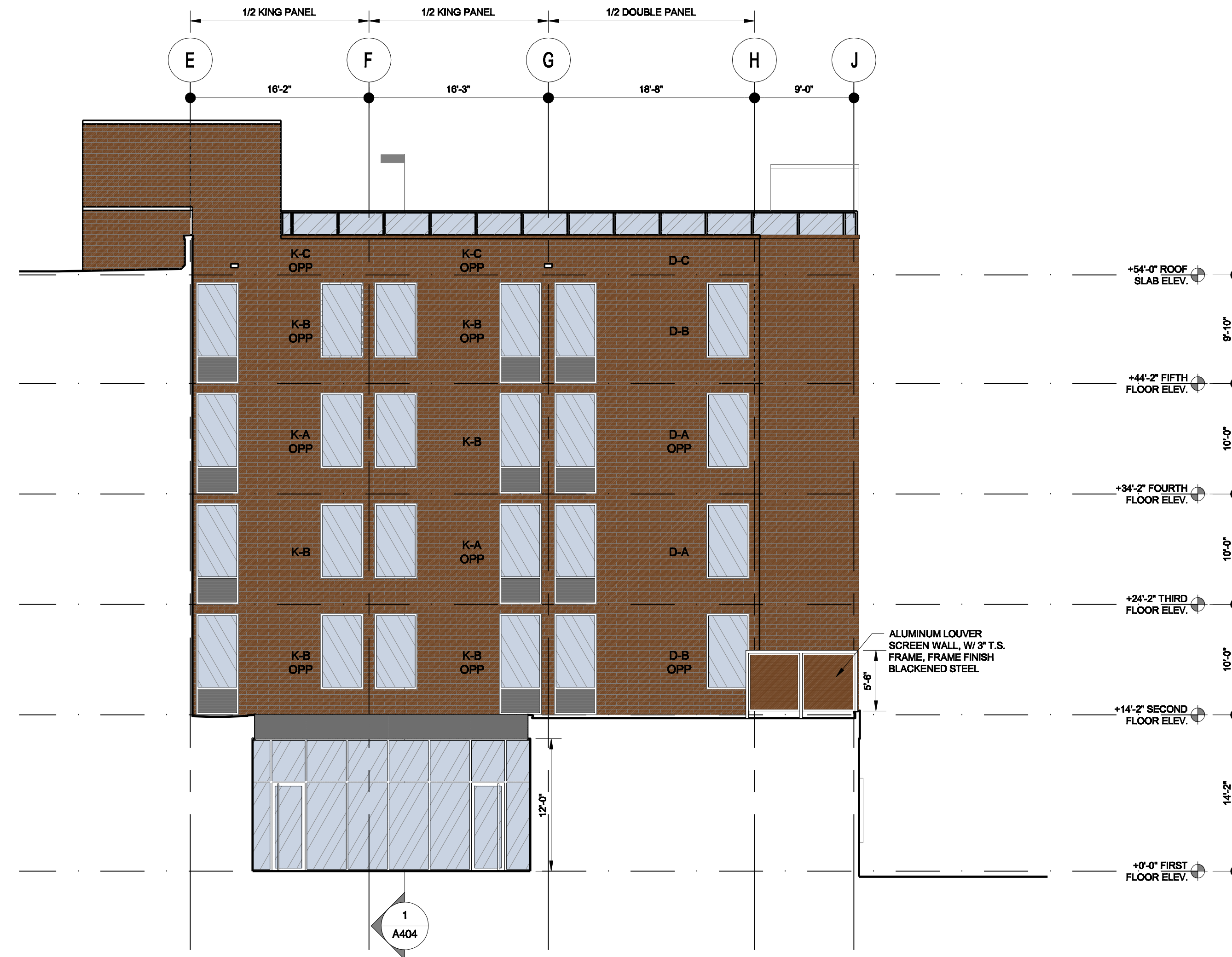
FINISH MATERIAL LEGEND			
SPANDREL GLASS		4" UTILITY BRICK - SIOUX CITY BRICK & TILE COMPANY TOASTED FINE ART SMOOTH	
VISION GLASS		ACM (ALUMINUM COMPOSITE MATERIAL) COLOR TO BE HONDA GRAY	
METAL PANEL SYSTEM		ALUM. LOUVER IN (WINDOW SYSTEM) PAINT TO MATCH BRICK	
PRODEMA COLOR TO BE RUSTIK		COLD-CATHODE LIGHT STRIPS	
COLOR METAL ACCENT PANELS SEE ELEVATION FOR COLORS			



1 WEST ELEVATION
1/8" = 1'-0"

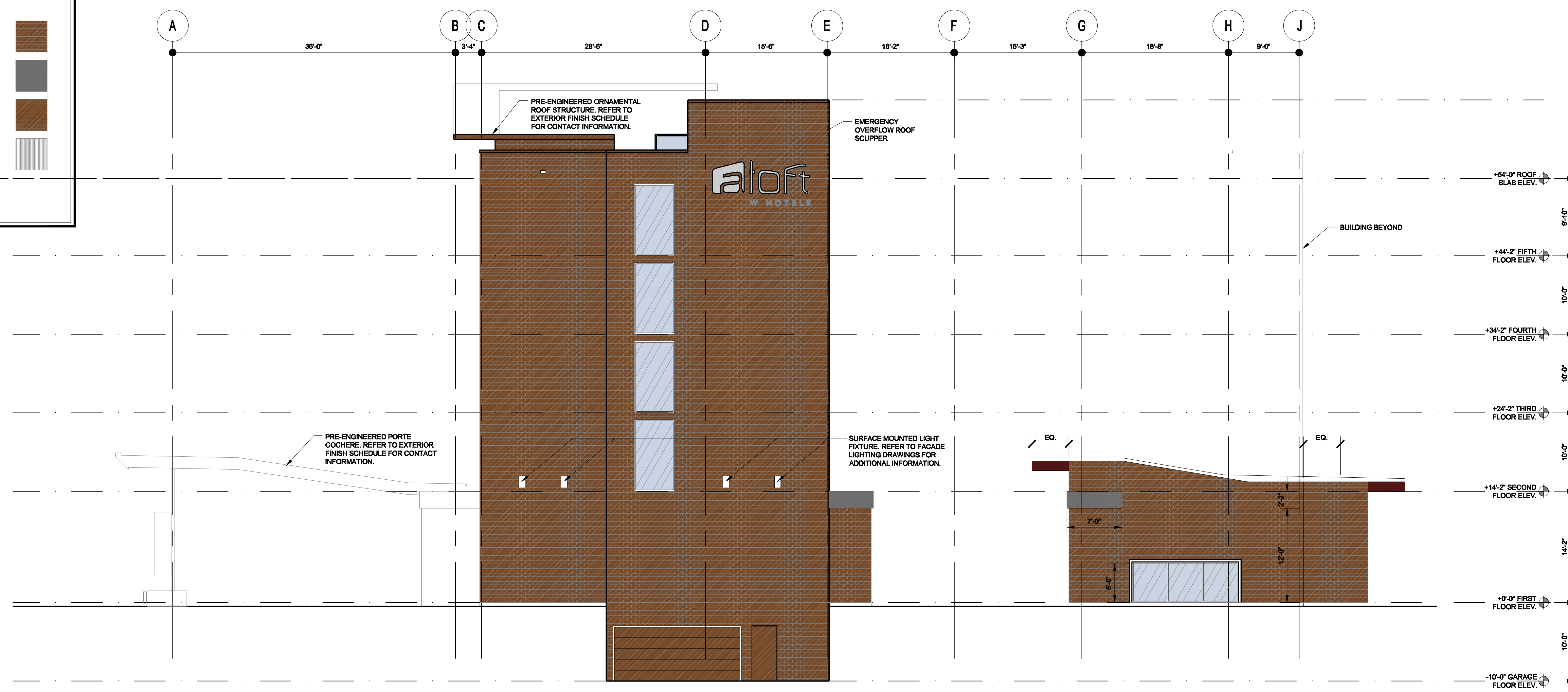


3 EAST POOL ELEVATION @ BACK
A301 1/8" = 1'-0"



2 NORTH ELEVATION @ BACK
A302 1/8" = 1'-0"

FINISH MATERIAL LEGEND	
SPANDREL GLASS	4" UTILITY BRICK - SIOUX CITY BRICK & TILE COMPANY TOASTED FINE ART SMOOTH
VISION GLASS	ACM (ALUMINUM COMPOSITE MATERIAL) COLOR TO BE HONDA GRAY
METAL PANEL SYSTEM	ALUM. LOUVER IN (WINDOW SYSTEM) PAINT TO MATCH BRICK
PRODEMA COLOR TO BE RUSTIK	COLD-CATHODE LIGHT STRIPS
COLORLED METAL ACCENT PANELS SEE ELEVATION FOR COLORS	



1 NORTH ELEVATION
A202 1/8" = 1'-0"

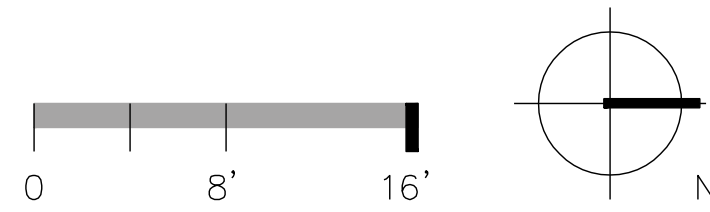


Image Name

Building Materials and Color Scheme



west elevation



east elevation



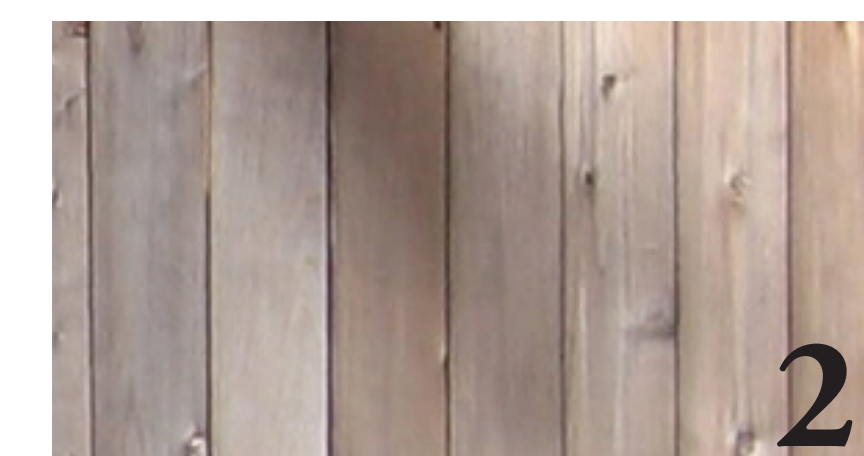
Precedent One



Precedent Two



1
Corrugated Metal Panel



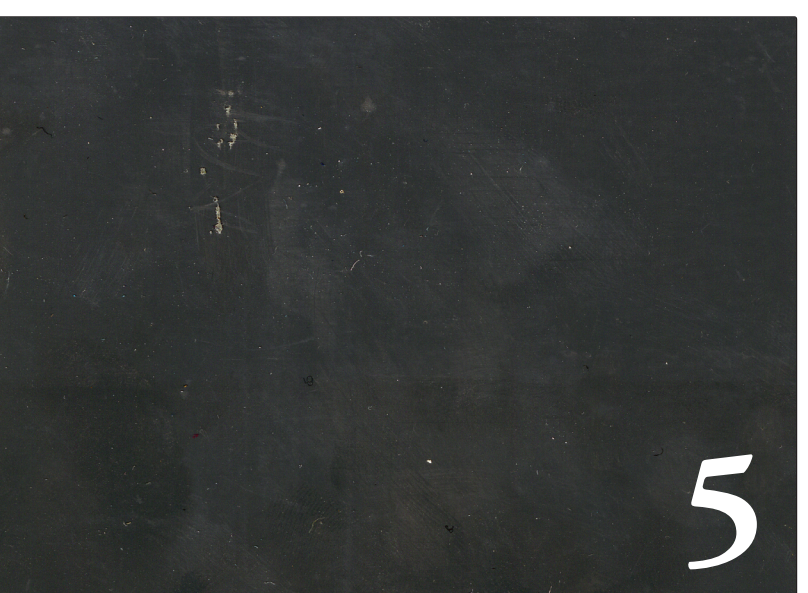
2
Cedar Cladding



3
Glulam Beams



4
Brick (Same as Aloft)



5
Metal Panels & Mullions

A11 - Building Elevations and Materials

MADISON • ALOFT / FRATELLO'S

16 JULY 2008

Building Materials and Color Scheme



north elevation



south elevation



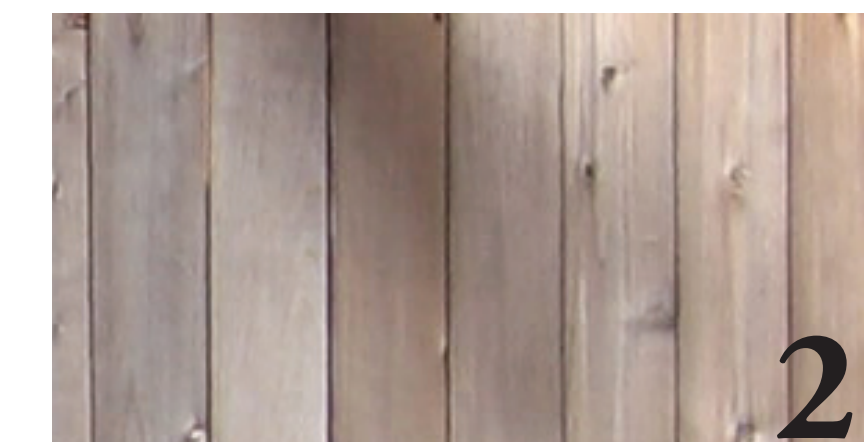
Precedent Three



Precedent Four



1
Corrugated Metal Panel



2
Cedar Cladding



3
Glulam Beams



4
Brick (Same as Aloft)



5
Metal Panels & Mullions

A12 - Building Elevations and Materials

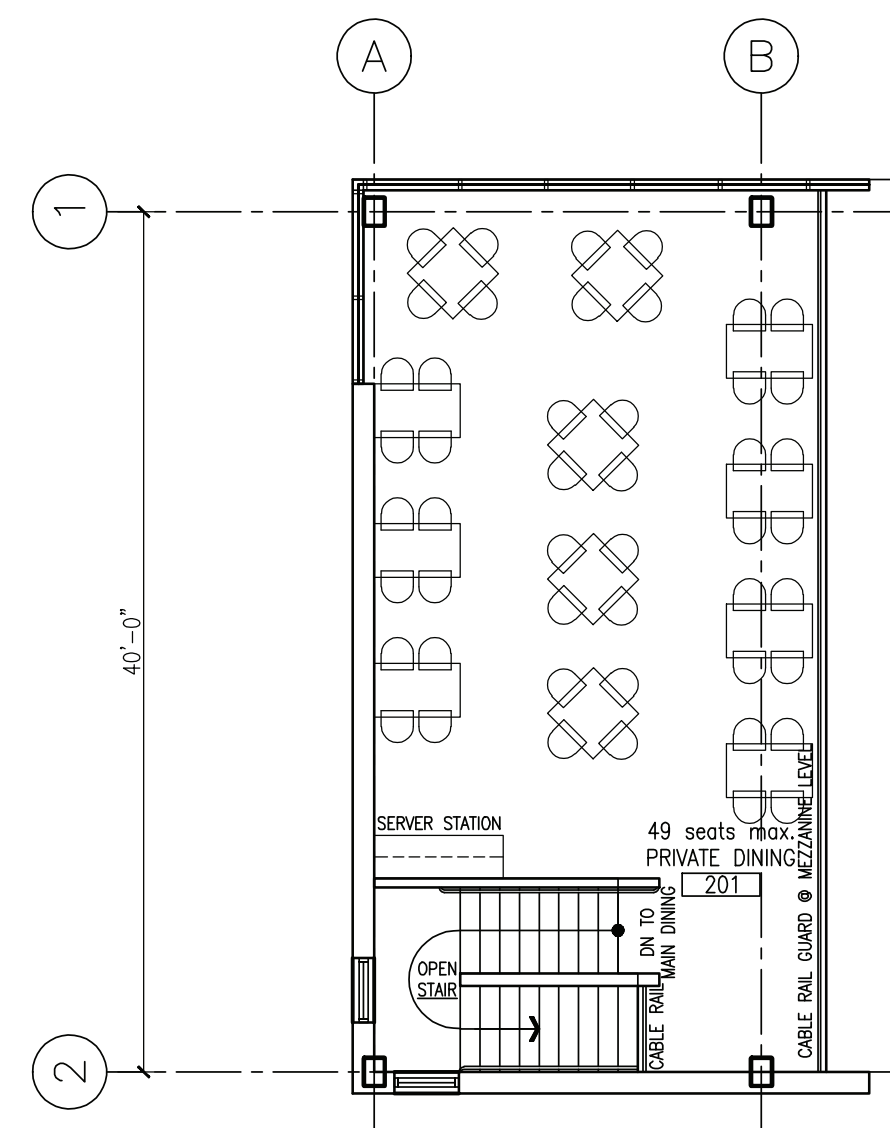
MADISON • ALOFT / FRATELLO'S

16 JULY 2008

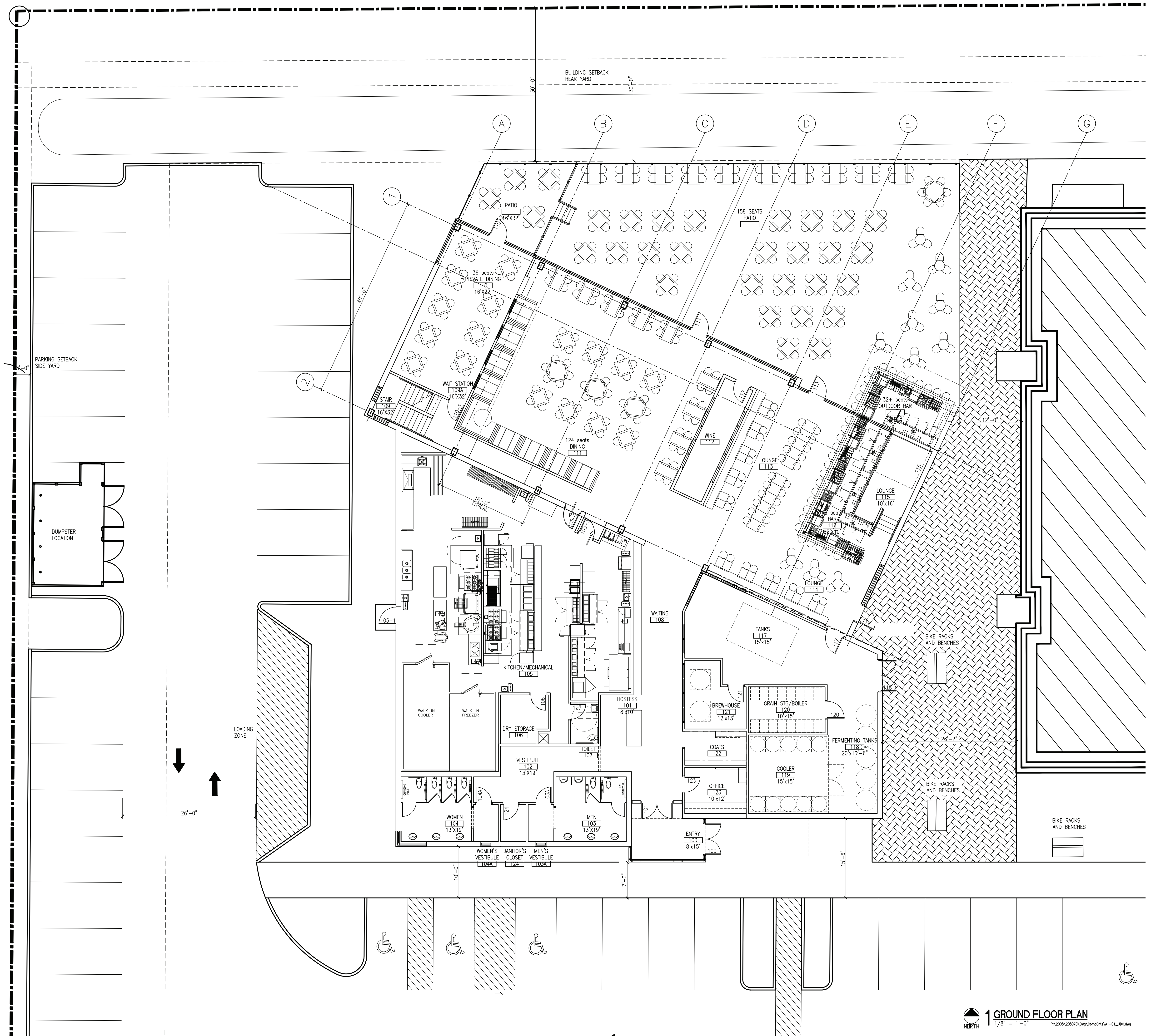


A13 - Front Bird's Eye View





2 MEZZANINE FLOOR PLAN
 NORTH 1/8" = 1'-0"
 P:\2008\208070\Draw\Comp\SH(A1)-01_L001.dwg



1 GROUND FLOOR PLAN
 NORTH 1/8" = 1'-0"
 P:\2008\208070\Draw\Comp\SH(A1)-01_L001.dwg

