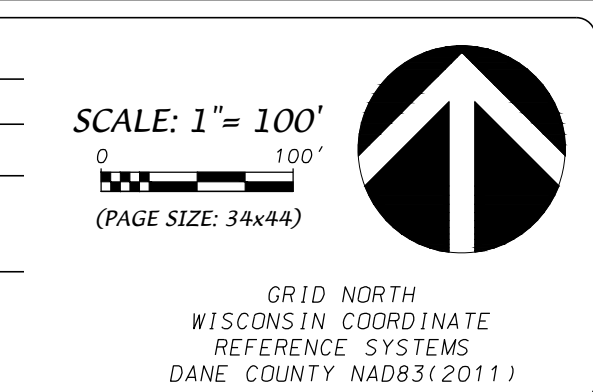


- LEGEND**
- FOUND 1" PIPE (UNLESS NOTED)
  - FOUND 3/4" REBAR
  - FOUND 1-1/4" REBAR
  - FOUND CUT "X" IN CONCRETE
  - PLACED 3/4"x18" REBAR W/ 1.5 LB/FT
  - RECORDED AS INFORMATION
  - CORPORATE LIMITS OF THE CITY OF MADISON
  - SANITARY SEWER
  - WATER MAIN
  - STORM SEWER
  - OVERHEAD UTILITIES
  - MANHOLE
  - CATCH BASIN/INLET
  - POWER POLE
  - LIGHT POLE
  - HYDRANT
  - VALVE
  - UTILITY VAULT
  - TELECOMMUNICATION PEDESTAL
  - ELECTRIC BOX
  - SIGN
  - SOIL BORING
  - EDGE OF TREES
  - CONCRETE CURB AND GUTTER
  - EXISTING CONTOUR
  - FIRST ADDITION TO HILL VALLEY PLAT LIMITS
  - SECOND ADDITION TO HILL VALLEY PLAT LIMITS

DATE: 03-12-26  
 REVISION:  
 FN: 24-07-107  
 Sheet Number:  
 1 of 2



PRELIMINARY PLAT  
**HILL VALLEY**  
 LOCATED IN ALL 1/4'S OF THE NE 1/4 OF SECTION 34 AND IN THE NW1/4 OF THE NW1/4 AND THE SW1/4 OF THE NW1/4 OF SECTION 35, ALL IN T7N, R8E, CITY OF MADISON, DANE COUNTY, WISCONSIN

**D'ONOFRIO KOTTEK AND ASSOCIATES, INC.**  
 7530 Westward Way, Madison, WI 53717  
 Phone: 608.833.7530 • Fax: 608.833.1089  
 YOUR NATURAL RESOURCE FOR LAND DEVELOPMENT

