

AXIS P3265-LVE Dome Camera

Outdoor 2 MP dome with IR and deep learning

Featuring Lightfinder 2.0, Forensic WDR, and OptimizedIR, AXIS P3265-LVE delivers excellent image quality under any light conditions. Based on the latest Axis system-on-chip (SoC), it includes a deep learning processing unit enabling advanced features and powerful analytics based on deep learning on the edge. Thanks to AXIS Object Analytics, it offers detection and classification of humans, vehicles, and types of vehicles – all tailored to your specific needs. Featuring audio and I/O connectivity, you can integrate equipment and extend the value of your system. Furthermore, this robust, IK10-rated, outdoor-ready camera includes built-in cybersecurity to help prevent unauthorized access and safeguard your system.

- > **Excellent image quality in 2 MP**
- > **Lightfinder 2.0, Forensic WDR, OptimizedIR**
- > **Analytics with deep learning**
- > **Available with wide or tele lens**
- > **Built-in cybersecurity features**



AXIS P3265-LVE Dome Camera

Variants	AXIS P3265-LVE 9 mm AXIS P3265-LVE 22 mm
Camera	
Image sensor	1/2.8" progressive scan RGB CMOS
Lens	<p>9 mm: Varifocal, 3.4–8.9 mm, F1.8 Horizontal field of view: 100°–36° Vertical field of view: 53°–20° Minimum focus distance: 50 cm (20 in)</p> <p>22 mm: Varifocal, 9–22 mm, F1.6 Horizontal field of view: 35°–15° Vertical field of view: 19°–9° Minimum focus distance: 3 m (9.84 ft)</p> <p>9 mm and 22 mm: IR corrected, remote zoom and focus, P-Iris control</p>
Day and night	Automatically removable infrared-cut filter
Minimum illumination	<p>With Forensic WDR and Lightfinder 2.0: Color: 0.1 lux at 50 IRE, F1.8/F1.6 (9 mm/22 mm) B/W: 0 lux at 50 IRE, F1.8/F1.6 (9 mm/22 mm)</p>
Shutter speed	1/66500 s to 2 s
Camera adjustment	<p>9 mm: Pan ±180°, tilt ±75°, rotation ±175° 22 mm: Pan ±190°, tilt -10 to +80°, rotation ±190°</p>
System on chip (SoC)	
Model	ARTPEC-8
Memory	1024 MB RAM, 8192 MB Flash
Compute capabilities	Deep learning processing unit (DLPU)
Video	
Video compression	<p>H.264 (MPEG-4 Part 10/AVC) Baseline, Main, and High Profiles H.265 (MPEG-H Part 2/HEVC) Main Profile Motion JPEG</p>
Resolution	1920x1080 to 160x90
Frame rate	<p>With WDR: 25/30 fps with power line frequency 50/60 Hz Without WDR: 50/60 fps with power line frequency 50/60 Hz</p>
Video streaming	<p>Multiple, individually configurable streams in H.264, H.265, and Motion JPEG Axis Zipstream technology in H.264 and H.265 Controllable frame rate and bandwidth VBR/ABR/MBR H.264/H.265 Low latency mode Video streaming indicator</p>
Multi-view streaming	Up to 2 individually cropped out view areas in full frame rate
Image settings	Saturation, contrast, brightness, sharpness, Forensic WDR: up to 120 dB depending on scene, white balance, day/night threshold, local contrast, tone mapping, exposure mode, exposure zones, defogging, barrel distortion correction, compression, rotation: 0°, 90°, 180°, 270° including Corridor Format, mirroring, dynamic text and image overlay, privacy masks, polygon privacy mask
Pan/Tilt/Zoom	Digital PTZ, preset positions
Audio	
Audio streaming	<p>9 mm: Two-way, full duplex 22 mm: Audio in, simplex, two-way audio via edge-to-edge technology</p>
Audio encoding	24bit LPCM, AAC-LC 8/16/32/44.1/48 kHz, G.711 PCM 8 kHz, G.726 ADPCM 8 kHz, Opus 8/16/48 kHz Configurable bit rate
Audio input/output	<p>9 mm: External microphone input, line input, digital input with ring power, line output, automatic gain control 22 mm: External microphone input, line input, digital input with ring power, automatic gain control, network speaker pairing</p>
Network	
Network protocols	IPv4, IPv6 USGv6, ICMPv4/ICMPv6, HTTP, HTTPS, HTTP/2, TLS, QoS Layer 3 DiffServ, FTP, SFTP, CIFS/SMB, SMTP, mDNS (Bonjour), UPnP®, SNMP v1/v2c/v3 (MIB-II), DNS/DNSv6, DDNS, NTP, NTS, RTSP, RTCP, RTP, SRTP/RTSPS, TCP, UDP, IGMPv1/v2/v3, DHCPv4/v6, ARP, SSH, SIP, LLDP, CDP, MQTT v3.1.1, Secure syslog (RFC 3164/5424, UDP/TCP/TLS), Link-Local address (ZeroConf)
System integration	
Application Programming Interface	<p>Open API for software integration, including VAPIX®, metadata, and AXIS Camera Application Platform (ACAP); specifications at axis.com/developer-community. One-click cloud connection ONVIF® Profile G, ONVIF® Profile M, ONVIF® Profile S, and ONVIF® Profile T, specification at onvif.org Support for Session Initiation Protocol (SIP) for integration with Voice over IP (VoIP) systems, peer to peer or integrated with SIP/PBX.</p>
Video management systems	Compatible with AXIS Camera Station Edge, AXIS Camera Station Pro, AXIS Camera Station 5, and video management software from Axis' partners available at axis.com/vms .
Onscreen controls	<p>Day/night shift Defogging Wide dynamic range Video streaming indicator IR illumination</p>
Event conditions	<p>Analytics, external input, supervised external input, virtual inputs through API Audio: audio clip playing, audio clip currently playing Call: state, state change Device status: above operating temperature, above or below operating temperature, below operating temperature, within operating temperature, IP address removed, new IP address, network lost, system ready, ring power overcurrent protection, live stream active, 22 mm: casing open Digital audio: digital signal contains Axis metadata, digital signal has invalid sample rate, digital signal missing, digital signal okay Edge storage: recording ongoing, storage disruption, storage health issues detected I/O: digital input, manual trigger, virtual input MQTT: subscribe Scheduled and recurring: schedule Video: average bitrate degradation, day-night mode, live stream open, tampering</p>
Event actions	<p>Overlay text, external output activation, play audio clip, zoom preset, day/night mode, flash status LED, use lights, set defog mode, set WDR mode Calls: end SIP call, make SIP call, answer call I/O: toggle I/O once, toggle I/O while the rule is active MQTT: publish Notification: email, HTTP, HTTPS, TCP, and SNMP trap Pre- and post-alarm video or image buffering for recording or upload Record video: SD card and network share Upload of images or video clips: FTP, SFTP, HTTP, HTTPS, network share, and email</p>
Built-in installation aids	Remote zoom and focus, straighten image, pixel counter, level grid
Analytics	
Applications	<p>Included AXIS Object Analytics, AXIS Scene Metadata, AXIS Image Health Analytics, AXIS Live Privacy Shield[®] AXIS Video Motion Detection, active tampering alarm, audio detection</p> <p>Supported AXIS Perimeter Defender, AXIS License Plate Verifier AXIS Camera Application Platform enabling installation of third-party applications, see axis.com/acap</p>
AXIS Object Analytics	<p>Object classes: humans, vehicles (types: cars, buses, trucks, bikes, other) Scenarios: line crossing, object in area, crossline counting, occupancy in area, time in area Up to 10 scenarios Other features: triggered objects visualized with trajectories, color-coded bounding boxes and tables Polygon include/exclude areas Perspective configuration ONVIF Motion Alarm event</p>
AXIS Image Health Analytics	<p>Detection settings: Tampering: blocked image, redirected image Image degradation: blurred image, underexposed image Other features: sensitivity, validation period</p>

AXIS Scene Metadata	Object data: Classes: humans, faces, vehicles (types: cars, buses, trucks, bikes), license plates Other attributes: Vehicle color, upper/lower clothing color, confidence, position		9 mm: ¼"-20 UNC tripod screw thread
		Sustainability	9 mm: PVC free, 4.1% recycled plastics 22 mm: PVC free, BFR/CFR free, 6.5% bioplastics
		Power	Power over Ethernet (PoE) IEEE 802.3af/802.3at Type 1 Class 3 Typical 4.8 W, max 10.7 W
Approvals		Connectors	RJ45 10BASE-T/100BASE-TX PoE I/O: 4-pin 2.5 mm (0.098 in) terminal block for 1 supervised digital input and 1 digital output (12 V DC output, max. load 25 mA) Audio 9 mm: 4-pin 2.5 mm (0.098 in) terminal block for audio in and out, 22 mm: 3.5 mm mic/line in
EMC	EN 55035, EN 55032 Class A, EN 50121-4, EN 61000-3-2, EN 61000-3-3, EN 61000-6-1, EN 61000-6-2 Australia/New Zealand: RCM AS/NZS CISPR 32 Class A Canada: ICES-3(A)/NMB-3(A) Japan: VCCI Class A Korea: KC KN35, KC KN32 Class A USA: FCC Part 15 Subpart B Class A Railway: IEC 62236-4	IR illumination	Optimized IR with power-efficient, long-life 850 nm IR LEDs Range of reach 40 m (130 ft)/45 m (148 ft) (9 mm/22 mm) or more depending on the scene
Safety	CAN/CSA C22.2 No. 60950-22, CAN/CSA C22.2 No. 62368-1, IEC/EN/UL 62368-1, IEC/EN/UL 60950-22, IEC/EN 62471, IS 13252	Storage	Support for microSD/microSDHC/microSDXC card Support for SD card encryption (AES-XTS-Plain64 256bit) Recording to network-attached storage (NAS) For SD card and NAS recommendations see axis.com
Environment	IEC 60068-2-1, IEC 60068-2-2, IEC 60068-2-6, IEC 60068-2-14, IEC 60068-2-27, IEC 60068-2-78 IEC/EN 60529 IP66, IEC/EN 62262 IK10, NEMA 250 Type 4X, NEMA TS 2 (2.2.7-2.2.9)	Operating conditions	-40 °C to 50 °C (-40 °F to 122 °F) Maximum temperature according to NEMA TS 2 (2.2.7): 74 °C (165 °F) Start-up temperature: -30 °C to 50 °C (-22 °F to 122 °F) Humidity 10-100% RH (condensing)
Network	NIST SP500-267	Storage conditions	-40 °C to 65 °C (-40 °F to 149 °F) Humidity 5-95% RH (non-condensing)
Cybersecurity	ETSI EN 303 645	Dimensions	Without weathershield: Height: 104 mm (4.09 in)/107 mm (4.21 in) (9 mm/22 mm) ø 149 mm (5.87 in)
Cybersecurity		Weight	With weathershield: 800 g (1.8 lb)/900 g (2.0 lb) (9 mm/22 mm)
Edge security	Software: Signed OS, brute force delay protection, digest authentication and OAuth 2.0 RFC6749 OpenID Authorization Code Flow for centralized ADFS account management, password protection, AES-XTS-Plain64 256bit SD card encryption Hardware: Axis Edge Vault cybersecurity platform Secure element (CC EAL 6+), system-on-chip security (TEE), Axis device ID, secure keystore, signed video, secure boot, encrypted filesystem (AES-XTS-Plain64 256bit)	Included accessories	Installation guide, Windows® decoder 1-user license, drill template, RESISTORX® T20 L-key (9 mm), RESISTORX® T20 screw bit (22 mm), terminal block connectors, cable gaskets, connector guard, weathershield
Network security	IEEE 802.1X (EAP-TLS, PEAP-MSCHAPv2), IEEE 802.1AE (MACsec PSK/EAP-TLS), IEEE 802.1AR, HTTPS/HSTS, TLS v1.2/v1.3, Network Time Security (NTS), X.509 Certificate PKI, host-based firewall	Optional accessories	AXIS TP3201-E Recessed Mount, AXIS TP3103-E Pendant Kit, AXIS T94K01D Pendant Kit, AXIS T8355 Digital Microphone 3.5 mm, AXIS Surveillance Cards 9 mm: AXIS Dome Intrusion Switch C, AXIS TP3804-E Metal Casing White, AXIS TP3802-E Clear/Smoked Dome, AXIS TP3820-E Casing Black/White 22 mm: AXIS TP3824-E Dome Clear/Smoked, AXIS TP3821-E Casing Black/White For more accessories, see axis.com
Documentation	<i>AXIS OS Hardening Guide</i> <i>Axis Vulnerability Management Policy</i> <i>Axis Security Development Model</i> AXIS OS Software Bill of Material (SBOM) To download documents, go to axis.com/support/cybersecurity/resources To read more about Axis cybersecurity support, go to axis.com/cybersecurity	Languages	English, German, French, Spanish, Italian, Russian, Simplified Chinese, Japanese, Korean, Portuguese, Polish, Traditional Chinese, Dutch, Czech, Swedish, Finnish, Turkish, Thai, Vietnamese
General		Warranty	5-year warranty, see axis.com/warranty
Casing	IP66-, NEMA 4X- and IK10-rated Polycarbonate hard coated dome Polycarbonate casing and weathershield Color: white NCS S 1002-B For repainting instructions, go to the product's support page. For information about the impact on warranty, go to axis.com/warranty-implication-when-repainting .		
Mounting	Mounting bracket with junction box holes (double-gang, single-gang, and 4" octagon) and for wall or ceiling mount		

a. Available for download

AXIS P3267-LVE Dome Camera

5 MP outdoor dome with IR and deep learning

Featuring Lightfinder 2.0, Forensic WDR, and OptimizedIR, AXIS P3267-LVE delivers excellent image quality under any light conditions. Built on an Axis system-on-chip (SoC), it includes a deep learning processing unit enabling advanced features and powerful analytics based on deep learning on the edge. For instance, AXIS Object Analytics, can detect and classify humans, vehicles, and types of vehicles, and enables fast VMS search. This robust, IK10-rated outdoor-ready camera includes Axis Edge Vault, a hardware-based cybersecurity platform that safeguards the devices and protects sensitive information from unauthorized access. Plus, AXIS P3267-LVE Mic features a built-in microphone, so it's out-of-the-box-ready for AXIS Audio Analytics.

- > [Excellent image quality in 5 MP](#)
- > [Lightfinder 2.0, Forensic WDR, and OptimizedIR](#)
- > [Analytics with deep learning](#)
- > [Variant with built-in microphone](#)
- > [Axis Edge Vault safeguards the device](#)



AXIS P3267-LVE Dome Camera

NTS, RTSP, RTCP, RTP, SRTP/RTSPS, TCP, UDP, IGMPv1/v2/v3, DHCPv4/v6, ARP, SSH, SIP, LLDP, CDP, MQTT v3.1.1, Secure syslog (RFC 3164/5424, UDP/TCP/TLS), Link-Local address (ZeroConf)

Camera	
Variants	AXIS P3267-LVE AXIS P3267-LVE Mic
Image sensor	1/2.7" progressive scan RGB CMOS
Lens	Varifocal, 3–8 mm, F1.3 Horizontal field of view: 104°–40° Vertical field of view: 74°–29° Minimum focus distance: 1 m (3.28 ft) IR corrected, remote zoom and focus, P-Iris control
Day and night	Automatically removable infrared-cut filter
Minimum illumination	With Forensic WDR and Lightfinder 2.0: Color: 0.13 lux at 50 IRE, F1.3 B/W: 0 lux at 50 IRE, F1.3
Shutter speed	1/33500 s to 1/5 s
Camera adjustment	Pan ±190°, tilt -10 to +80°, rotation ±190°
System on chip (SoC)	
Model	ARTPEC-8
Memory	2048 MB RAM, 8192 MB Flash
Compute capabilities	Deep learning processing unit (DLPU)
Video	
Video compression	H.264 (MPEG-4 Part 10/AVC) Baseline, Main, and High Profiles H.265 (MPEG-H Part 2/HEVC) Main Profile Motion JPEG
Resolution	2592x1944 to 160x90
Frame rate	25/30 fps with power line frequency 50/60 Hz
Video streaming	Multiple, individually configurable streams in H.264, H.265, and Motion JPEG Axis Zipstream technology in H.264 and H.265 Controllable frame rate and bandwidth VBR/ABR/MBR H.264/H.265 Low latency mode Video streaming indicator
Multi-view streaming	Up to 2 individually cropped out view areas in full frame rate
Image settings	Saturation, contrast, brightness, sharpness, Forensic WDR: up to 120 dB depending on scene, white balance, day/night threshold, local contrast, tone mapping, exposure mode, exposure zones, defogging, barrel distortion correction, compression, rotation: 0°, 90°, 180°, 270° including Corridor Format, mirroring, dynamic text and image overlay, privacy masks, polygon privacy mask
Pan/Tilt/Zoom	Digital PTZ, preset positions
Audio	
Audio features	Automatic gain control Speaker pairing 10-band graphic equalizer for audio input Audio privacy control ^a
Audio streaming	Two-way (full duplex) Audio analytics still available when audio streaming is off ^a
Audio input	External microphone input, line input, digital input with ring power or portcast technology Built-in microphone (disabled by default): MEMS microphone ^a
Audio output	Output through speaker pairing or portcast technology
Audio encoding	24bit LPCM, AAC-LC 8/16/32/44.1/48 kHz, G.711 PCM 8 kHz, G.726 ADPCM 8 kHz, Opus 8/16/48 kHz Configurable bit rate
Microphone	
SNR	66 dB(A) (94 dB SPL @ 1 m) ^a
Max SPL	129 dB (10% THD) ^a
Frequency range	20 Hz to 20 kHz, +/- 0.5 dB for analog mic/line input ^a
Network	
Network protocols	IPv4, IPv6 USGv6, ICMPv4/ICMPv6, HTTP, HTTPS, HTTP/2, TLS, QoS Layer 3 DiffServ, FTP, SFTP, CIFS/SMB, SMTP, mDNS (Bonjour), UPnP [®] , SNMP v1/v2c/v3 (MIB-II), DNS/DNSv6, DDNS, NTP,

System integration

Application Programming Interface	Open API for software integration, including VAPIX [®] and AXIS Camera Application Platform; specifications at axis.com One-click cloud connection ONVIF [®] Profile G, ONVIF [®] Profile M, ONVIF [®] Profile S, and ONVIF [®] Profile T, specification at onvif.org Support for Session Initiation Protocol (SIP) for integration with Voice over IP (VoIP) systems, peer to peer or integrated with SIP/PBX.
Video management software	Compatible with AXIS Camera Station Edge, AXIS Camera Station Pro, AXIS Camera Station 5, and video management software from Axis' partners available at axis.com/vms .
Onscreen controls	Day/night shift Defogging Wide dynamic range Video streaming indicator IR illumination
Edge-to-edge	Speaker pairing
Event conditions	Analytics, external input, supervised external input, virtual inputs through API Call: state, state change Device status: above operating temperature, above or below operating temperature, below operating temperature, within operating temperature, IP address removed, new IP address, network lost, system ready, ring power overcurrent protection, live stream active, casing open Digital audio: digital signal contains Axis metadata, digital signal has invalid sample rate, digital signal missing, digital signal okay Edge storage: recording ongoing, storage disruption, storage health issues detected I/O: digital input, manual trigger, virtual input MQTT: subscribe Scheduled and recurring: schedule Video: average bitrate degradation, day-night mode, live stream open, tampering
Event actions	Overlay text, external output activation, zoom preset, day/night mode, flash status LED, use lights, set defog mode, set WDR mode Calls: end SIP call, make SIP call, answer call I/O: toggle I/O once, toggle I/O while the rule is active MQTT: publish Notification: email, HTTP, HTTPS, TCP, and SNMP trap Pre- and post-alarm video or image buffering for recording or upload Record video: SD card and network share Upload of images or video clips: FTP, SFTP, HTTP, HTTPS, network share, and email
Built-in installation aids	Remote zoom and focus, straighten image, pixel counter, level grid
Analytics	
Applications	Included AXIS Object Analytics, AXIS Scene Metadata, AXIS Image Health Analytics AXIS Audio Analytics ^a AXIS Live Privacy Shield ^b , AXIS Video Motion Detection, active tampering alarm, audio detection Supported AXIS Perimeter Defender, AXIS License Plate Verifier AXIS Camera Application Platform enabling installation of third-party applications, see axis.com/acap
AXIS Object Analytics	Object classes: humans, vehicles (types: cars, buses, trucks, bikes, other) Scenarios: line crossing, object in area, time in area, crossline counting, occupancy in area, motion in area, motion line crossing Up to 10 scenarios Other features: triggered objects visualized with color-coded bounding boxes, polygon include/exclude areas, perspective configuration, ONVIF motion alarm event
AXIS Image Health Analytics	Detection settings: Tampering: blocked image, redirected image Image degradation: blurred image, underexposed image

	Other features: sensitivity, validation period
AXIS Audio Analytics	Valid for variant with built-in microphone Features: adaptive audio detection, audio classification Audio classes: scream, shout, glass break Event metadata: audio detections, classifications
AXIS Scene Metadata	Object classes: humans, faces, vehicles (types: cars, buses, trucks, bikes), license plates Object attributes: vehicle color, upper/lower clothing color, confidence level, position Audio data: audio level
Approvals	
EMC	EN 50121-4, EN 55032 Class A, EN 55035, EN 61000-3-2, EN 61000-3-3, EN 61000-6-1, EN 61000-6-2 Australia/New Zealand: RCM AS/NZS CISPR 32 Class A Canada: ICES-3(A)/NMB-3(A) Japan: VCCI Class A Korea: KC KN32 Class A, KC KN35 USA: FCC Part 15 Subpart B Class A Railway: IEC 62236-4
Safety	CAN/CSA C22.2 No. 62368-1 ed. 3, IEC/EN/UL 62368-1 ed. 3, IEC/EN 62471, IS 13252
Environment	IEC 60068-2-1, IEC 60068-2-2, IEC 60068-2-6, IEC 60068-2-14, IEC 60068-2-27, IEC 60068-2-78, IEC/EN 60529 IP66, IEC/EN 62262 IK10, NEMA 250 Type 4X, NEMA TS 2 (2.2.7-2.2.9)
Network	NIST SP500-267
Cybersecurity	ETSI EN 303 645
Cybersecurity	
Edge security	Software: Signed OS, brute force delay protection, digest authentication and OAuth 2.0 RFC6749 OpenID Authorization Code Flow for centralized ADFS account management, password protection, AES-XTS-Plain64 256bit SD card encryption Hardware: Axis Edge Vault cybersecurity platform Secure element (CC EAL 6+), system-on-chip security (TEE), Axis device ID, secure keystore, signed video, secure boot, encrypted filesystem (AES-XTS-Plain64 256bit)
Network security	IEEE 802.1X (EAP-TLS, PEAP-MSCHAPv2), IEEE 802.1AE (MACsec PSK/EAP-TLS), IEEE 802.1AR, HTTPS/HSTS, TLS v1.2/v1.3, Network Time Security (NTS), X.509 Certificate PKI, host-based firewall
Documentation	<i>AXIS OS Hardening Guide</i> <i>Axis Vulnerability Management Policy</i> <i>Axis Security Development Model</i> AXIS OS Software Bill of Material (SBOM) To download documents, go to axis.com/support/cybersecurity/resources To read more about Axis cybersecurity support, go to axis.com/cybersecurity
General	
Casing	IP66-, NEMA 4X- and IK10-rated Polycarbonate hard coated dome Polycarbonate casing and weathershield Color: white NCS S 1002-B For repainting instructions, go to the product's support page. For information about the impact on warranty, go to axis.com/warranty-implication-when-repainting .
Mounting	Mounting bracket with junction box holes (double-gang, single-gang, and 4" octagon) and for wall or ceiling mount

Power	Power over Ethernet (PoE) IEEE 802.3af/802.3at Type 1 Class 3 Typical 6.4 W, max 12.1 W
Connectors	Network: RJ45 10BASE-T/100BASE-TX PoE I/O: 4-pin 2.5 mm (0.098 in) terminal block for 1 supervised digital input and 1 digital output (12 V DC output, max. load 25 mA) Audio: 3.5 mm mic/line in
IR illumination	Optimized IR with power-efficient, long-life 850 nm IR LEDs Range of reach 40 m (130 ft) or more depending on the scene
Storage	Support for microSD/microSDHC/microSDXC card Support for SD card encryption (AES-XTS-Plain64 256bit) Recording to network-attached storage (NAS) For SD card and NAS recommendations see axis.com
Operating conditions	Temperature: -40 °C to 50 °C (-40 °F to 122 °F) Maximum temperature according to NEMA TS 2 (2.2.7): 74 °C (165 °F) Start-up temperature: -30 °C to 50 °C (-22 °F to 122 °F) Humidity: 10–100% RH (condensing)
Storage conditions	Temperature: -40 °C to 65 °C (-40 °F to 149 °F) Humidity: 5–95% RH (non-condensing)
Dimensions	Without weathershield: Height: 107 mm (4.21 in) ø 149 mm (5.87 in)
Weight	With weathershield: 900 g (2.0 lb)
Box content	Camera, installation guide, Windows® decoder 1-user license, drill template, RESISTORX® T20 screw bit, terminal block connectors, cable gaskets, connector guard, weathershield
Optional accessories	AXIS TP3201-E Recessed Mount, AXIS TP3103-E Pendant Kit, AXIS T8355 Digital Microphone 3.5 mm, AXIS TP3824-E Dome Clear/Smoked, AXIS TP3821-E Casing Black/White, AXIS Surveillance Cards For more accessories, see axis.com
Languages	English, German, French, Spanish, Italian, Russian, Simplified Chinese, Japanese, Korean, Portuguese, Polish, Traditional Chinese, Dutch, Czech, Swedish, Finnish, Turkish, Thai, Vietnamese
Warranty	5-year warranty, see axis.com/warranty
Sustainability	
Substance control	PVC free, BFR/CFR free in accordance with JEDEC/ECA Standard JS709 RoHS in accordance with EU RoHS Directive 2011/65/EU and EN 63000:2018 REACH in accordance with (EC) No 1907/2006. For SCIP UUID, see echa.europa.eu
Materials	Renewable carbon-based plastic content: 6.5% (recycled) Screened for conflict minerals in accordance with OECD guidelines To read more about sustainability at Axis, go to axis.com/about-axis/sustainability
Environmental responsibility	axis.com/environmental-responsibility Axis Communications is a signatory of the UN Global Compact, read more at unglobalcompact.org

- a. Only valid for variant with built-in microphone
b. Available for download

AXIS P9117-PV Corner Camera

6 MP corner camera with no blind spots

AXIS P9117-PV delivers 360° panoramic view with no blind spots. This 6 MP corner-mounted camera includes Axis Lightfinder and Axis Forensic WDR for true colors and great details in challenging light or near darkness. AXIS TP9801 Cover Steel is also available as an accessory. Featuring a deep learning processing unit, it's possible to run powerful analytics on the edge. For instance, AXIS Object Analytics can detect and classify different objects of interest. With a built-in microphone, it's out-of-the-box-ready for AXIS Audio Analytics. Furthermore, Axis edge vault, a hardware-based cybersecurity platform, safeguards the device.

- > Full coverage and no blind spots
- > 6 MP with stereographic lens
- > Built-in microphone and Axis Audio Analytics
- > Vandal-resistant (IK10) and IP66-rated dust protection
- > Built-in cybersecurity with Axis edge vault



AXIS P9117-PV Corner Camera

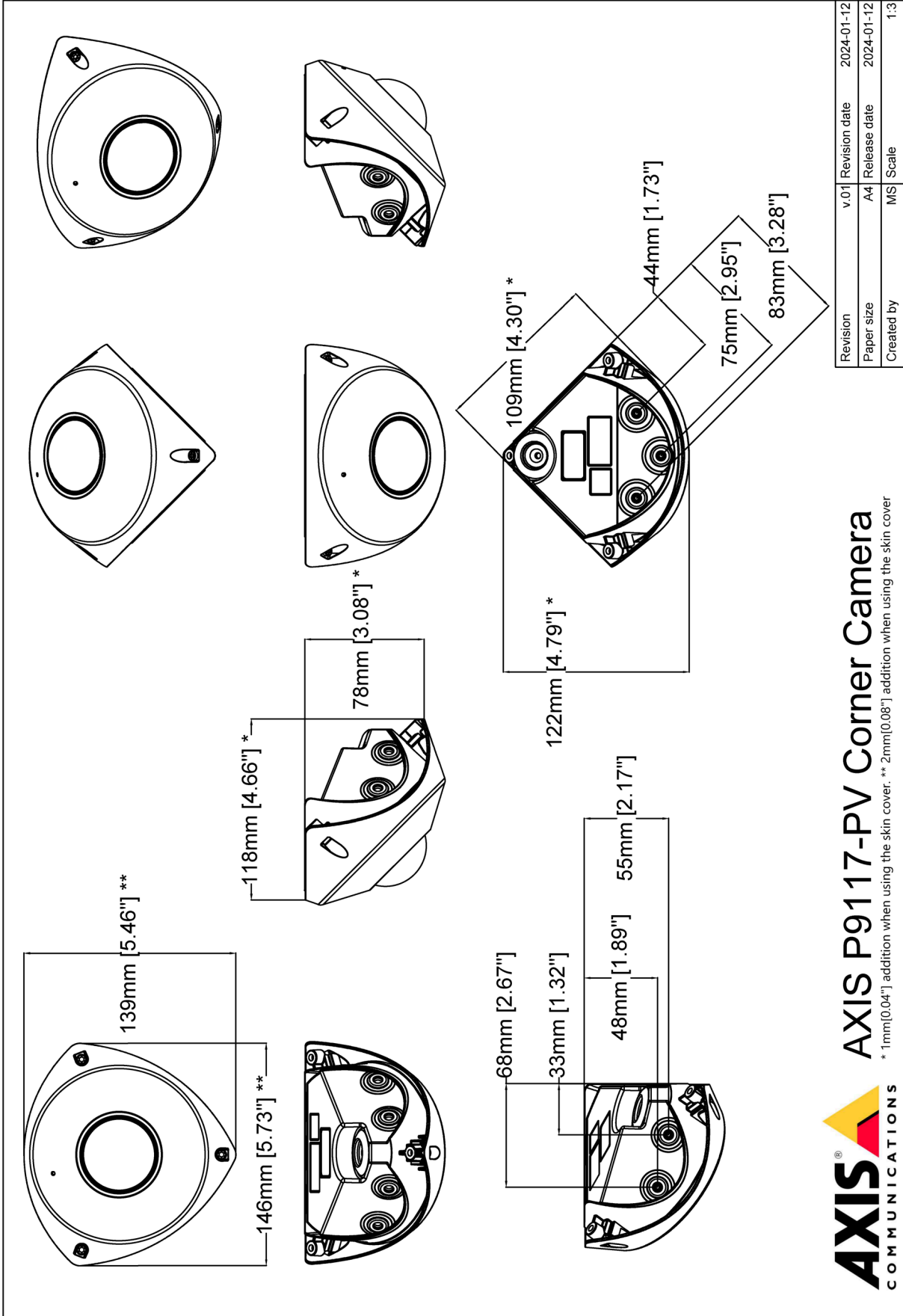
Camera		Network	
Image sensor	1/1.8" progressive scan RGB CMOS	Network protocols	IPv4, IPv6 USGv6, ICMIPv4/ICMPv6, HTTP, HTTPS ^a , HTTP/2, TLS ^a , QoS Layer 3 DiffServ, FTP, SFTP, CIFS/SMB, SMTP, mDNS (Bonjour), UPnP [®] , SNMP v1/v2c/v3 (MIB-II), DNS/DNSv6, DDNS, NTP, NTS, RTSP, RTP, SRTP, TCP, UDP, IGMPv1/v2/v3, RTCP, DHCPv4/v6, SSH, LLDP, CDP, MQTT v3.1.1, Syslog, Link-Local address (ZeroConf), IEEE 802.1X (EAP-TLS), IEEE 802.1AR
Lens	1.1 mm, F2.2 Overview (1:1) : Horizontal field of view: 176° Vertical field of view: 176° Corner View (4:3) : Horizontal field of view: 115° Vertical field of view: 100° Fixed iris, fixed focus, IR corrected	System integration	Application Programming Interface Open API for software integration, including VAPIX [®] , metadata and AXIS Camera Application Platform (ACAP); specifications at axis.com/developer-community . One-click cloud connection ONVIF [®] Profile G, ONVIF [®] Profile M, ONVIF [®] Profile S, and ONVIF [®] Profile T, specifications at onvif.org Support for Session Initiation Protocol (SIP) for integration with Voice over IP (VoIP) systems, peer to peer or integrated with SIP/PBX.
Day and night	Automatic IR-cut filter	Video management systems	Compatible with AXIS Camera Station Edge, AXIS Camera Station Pro, AXIS Camera Station 5, and video management software from Axis' partners available at axis.com/vms .
Minimum illumination	Color: 0.17 lux at 50 IRE, F2.2 B/W: 0.04 lux at 50 IRE, F2.2	Onscreen controls	Privacy masks Media clip
Shutter speed	1/33500 s to 1/5 s	Event conditions	Audio: audio detection Device status: above operating temperature, above or below operating temperature, below operating temperature, within operating temperature, IP address removed, new IP address, network lost, system ready, live stream active Edge storage: recording ongoing, storage disruption, storage health issues detected I/O: manual trigger, virtual input MQTT: subscribe Scheduled and recurring: schedule Video: average bitrate degradation, day-night mode, tampering
Camera adjustment	Digital roll: ±180°	Event actions	Day-night mode MQTT: publish Notification: HTTP, HTTPS, TCP and email Overlay text Recordings: SD card and network share SNMP traps: send, send while the rule is active Status LED Upload of images or video clips: FTP, SFTP, HTTP, HTTPS, network share and email WDR mode
System on chip (SoC)		Built-in installation aids	Pixel counter, digital roll, level grid
Model	ARTPEC-8	Analytics	
Memory	2048 MB RAM, 8192 MB Flash	AXIS Object Analytics	Object classes: humans, vehicles (types: cars, buses, trucks, bikes, other) Features: line crossing, object in area Up to 10 scenarios Metadata visualized with trajectories, color-coded bounding boxes and tables Polygon include/exclude areas ONVIF Motion Alarm event
Compute capabilities	Deep learning processing unit (DLPU)	AXIS Audio Analytics	Features: adaptive audio detection, audio classification Audio classes: scream, shout, glass break Event metadata: audio detections, classifications
Video		Metadata	Object data: Classes: humans, faces, vehicles (types: cars, buses, trucks, bikes), license plates Confidence, position Event data: Producer reference, scenarios, trigger conditions Audio data: audio level
Video compression	H.264 (MPEG-4 Part 10/AVC) Baseline, Main and High Profiles H.265 (MPEG-H Part 2/HEVC) Main Profile Motion JPEG	Applications	Included AXIS Object Analytics, AXIS Video Motion Detection, AXIS Audio Analytics, Active tampering alarm, Audio detection, Elevator door state detector Supported AXIS Camera Application Platform enabling installation of third-party applications, see axis.com/acap
Resolution	Overview: 2160x2160 to 160x160 (1:1) Corner View: 2048x1536 to 320x240 (4:3) Corner View: 2048x1152 to 256x144 (16:9)	Approvals	
Frame rate	without WDR: 50/60 fps @ 50/60 Hz with WDR: up to 25/30 fps @ 50/60 Hz	Product markings	BIS, CE, ICES, KC, RCM, UKCA, UL/cUL, VCCI, WEEE
Video streaming	Multiple, individually configurable streams in H.264, H.265, and Motion JPEG Axis Zipstream technology in H.264 and H.265 Controllable frame rate and bandwidth VBR/ABR/MBR H.264/H.265 Video streaming indicator		
WDR	Forensic WDR: Up to 120 dB depending on scene		
Noise reduction	Spatial filter (2D noise reduction) Temporal filter (3D noise reduction)		
Image settings	Saturation, contrast, brightness, sharpness, local contrast, tone mapping, white balance, day/night threshold, exposure mode, exposure zones, compression, mirroring, dynamic text and image overlay, and polygon privacy mask		
Image processing	Axis Zipstream, Forensic WDR		
Pan/Tilt/Zoom	Digital PTZ of view areas, digital PT of corner, preset positions, guard tours		
Audio			
Audio features	Automatic gain control Speaker pairing Audio privacy control		
Audio streaming	Two-way (full duplex) Audio analytics even when audio streaming is off		
Audio input	Input through speaker pairing or portcast technology 10-band graphic equalizer Built-in microphone (disabled by default): MEMS microphone		
Audio output	Output through speaker pairing or portcast technology		
Audio encoding	24bit LPCM, AAC-LC 8/16/32/44.1/48 kHz, G.711 PCM 8 kHz, G.726 ADPCM 8 kHz, Opus 8/16/48 kHz Configurable bit rate		

Supply chain	TAA compliant
EMC	EN 55032 Class A, EN 55035, EN 61000-6-1, EN 61000-6-2, Australia/New Zealand: RCM AS/NZS CISPR 32 Class A, Canada: ICES-3(A)/NMB-3(A), Japan: VCCI Class A, Korea:KS C 9835, KS C 9832 Class A, USA: FCC Part 15 Subpart B Class A
Safety	IEC/EN/UL 62368-1 ed. 3, CAN/CSA C22.2 No. 62368-1 ed. 3, IS 13252
Environment	IEC/EN 60529 IP66, IEC/EN 62262 Class IK10, IEC 60721-3-5 Class 5M3 (Vibration, Shock) IEC 60068-2-1, IEC 60068-2-2, IEC 60068-2-6, IEC 60068-2-14, IEC 60068-2-27, IEC 60068-2-78
Network	NIST SP500-267
Cybersecurity	
Edge security	Software: Signed OS, brute force delay protection, digest authentication, password protection, AES-XTS-Plain64 256bit SD card encryption Hardware: Axis Edge Vault cybersecurity platform Secure element (CC EAL 6+), system-on-chip security (TEE), Axis device ID, secure keystore, signed video, secure boot, encrypted filesystem (AES-XTS-Plain64 256bit)
Network security	IEEE 802.1X (EAP-TLS) ^a , IEEE 802.1AE (MACsec PSK/EAP-TLS), IEEE 802.1AR, HTTPS/HSTS ^a , TLS v1.2/v1.3 ^a , Network Time Security (NTS), X.509 Certificate PKI, host-based firewall
Documentation	<i>AXIS OS Hardening Guide</i> <i>Axis Vulnerability Management Policy</i> <i>Axis Security Development Model</i> To download documents, go to axis.com/support/cybersecurity/resources To read more about Axis cybersecurity support, go to axis.com/cybersecurity
General	
Casing	IP66, IK10-rated Polycarbonate hard-coated dome Color: White NCS S 1002-B For repainting instructions and impact on warranty, contact your Axis partner
Mounting	Corner mounting on 3 or 2 surfaces (wall + wall or wall + ceiling)
Power	Power over Ethernet (PoE) IEEE 802.3af/802.3at Type 1 Class 3 Typical 3.7 W, max 5.3 W
Connectors	Network: Shielded RJ45 10BASE-T/100BASE-TX PoE Audio: Audio and I/O connectivity via AXIS T61 Mk II Audio and I/O Interfaces with portcast technology
Storage	Support for microSD/microSDHC/microSDXC card Recording to network-attached storage (NAS) For SD card and NAS recommendations, see axis.com

Operating conditions	-15 °C to 50 °C (5 °F to 122 °F) Humidity 10–85% RH (non-condensing) Maximum operating temperature (intermittent): 55 °C (131 °F) Minimum startup temperature: -15 °C (5 °F)
Storage conditions	-40 °C to 65 °C (-40 °F to 149 °F)
Dimensions	Height: 92 mm (3.62 in) Width: 146 mm (5.75 in) Depth: 122 mm (4.80 in)
Weight	760 g (1.68 lb)
Box content	Camera, installation guide, RJ45 tool mounting, extra screw gaskets, extra cable gasket, owner authentication key
Optional accessories	AXIS TP9801 Cover Steel AXIS TP9601 Conduit Top Box AXIS T6101 Mk II Audio and I/O Interface AXIS T6112 Mk II Audio and I/O Interface AXIS T864 PoE+ over Coax Series 2N® 2WIRE AXIS T8415 Wireless Installation Tool AXIS Surveillance Cards For more accessories, go to axis.com/products/axis-p9117-pv#accessories
System tools	AXIS Site Designer, AXIS Device Manager, product selector, accessory selector, lens calculator Available at axis.com
Languages	English, German, French, Spanish, Italian, Russian, Simplified Chinese, Japanese, Korean, Traditional Chinese, Portuguese, Polish
Warranty	5-year warranty, see axis.com/warranty
Part numbers	Available at axis.com/products/axis-p9117-pv#part-numbers
Sustainability	
Substance control	PVC free, BFR/CFR free in accordance with JEDEC/ECA Standard J5709 RoHS in accordance with EU RoHS Directive 2011/65/EU and EN 63000:2018 REACH in accordance with (EC) No 1907/2006. For SCIP UUID, see axis.com/partner .
Materials	Renewable carbon-based plastic content: 73% (recycled) Screened for conflict minerals in accordance with OECD guidelines To read more about sustainability at Axis, go to axis.com/about-axis/sustainability
Environmental responsibility	axis.com/environmental-responsibility Axis Communications is a signatory of the UN Global Compact, read more at unglobalcompact.org

a. This product includes software developed by the OpenSSL Project for use in the OpenSSL Toolkit. (openssl.org), and cryptographic software written by Eric Young (ey@cryptsoft.com).

Dimension drawing



AXIS P9117-PV Corner Camera

* 1mm[0.04"] addition when using the skin cover. ** 2mm[0.08"] addition when using the skin cover

Revision	v.01	Revision date	2024-01-12
Paper size	A4	Release date	2024-01-12
Created by	MS	Scale	1:3

© 2024 Axis Communications

www.axis.com

Detect, Observe, Recognize, Identify (DORI)

Center	DORI definition	Distance
Detect	25 px/m (8 px/ft)	21.3 m (69.9 ft)
Observe	63 px/m (19 px/ft)	8.5 m (27.9 ft)
Recognize	125 px/m (38 px/ft)	3.6 m (11.8 ft)
Identify	250 px/m (76 px/ft)	2.1 m (6.9 ft)

The DORI values are calculated using pixel densities for different use cases as recommended by the EN-62676-4 standard. The calculations use the center of the image as the reference point and consider lens distortion. The possibility to recognize or identify a person or object depends on factors such as object motion, video compression, lighting conditions, and camera focus. Use margins when planning. The pixel density varies across the image, and the calculated values can differ from the distances in the real world.

Corner	DORI definition	Distance
Detect	25 px/m (8 px/ft)	30.2 m (99.1 ft)
Observe	63 px/m (19 px/ft)	12.0 m (39.4 ft)
Recognize	125 px/m (38 px/ft)	6.0 m (19.7 ft)
Identify	250 px/m (76 px/ft)	3.0 m (9.8 ft)

The DORI values are calculated using pixel densities for different use cases as recommended by the EN-62676-4 standard. The calculations use the Corner of the image as the reference point and consider lens distortion. The possibility to recognize or identify a person or object depends on factors such as object motion, video compression, lighting conditions, and camera focus. Use margins when planning. The pixel density varies across the image, and the calculated values can differ from the distances in the real world.

Highlighted capabilities

AXIS Object Analytics

AXIS Object Analytics is a preinstalled, multifeatured video analytics that detects and classifies humans, vehicles, and types of vehicles. Thanks to AI-based algorithms and behavioral conditions, it analyzes the scene and their spatial behavior within – all tailored to your specific needs. Scalable and edge-based, it requires minimum effort to set up and supports various scenarios running simultaneously.

Axis Edge Vault

Axis Edge Vault is the hardware-based cybersecurity platform that safeguards the Axis device. It forms the foundation that all secure operations depend on and offer features to protect the device's identity, safeguard its integrity and protect sensitive information from unauthorized access. For instance, **secure boot** ensures that a device can boot only with **signed OS**, which prevents physical supply chain tampering. With signed OS, the device is also able to validate new device software before accepting to install it. And the **secure keystore** is the critical building-block for protecting cryptographic information used for secure communication (IEEE 802.1X, HTTPS, Axis device ID, access control keys etc.) against malicious extraction in the event of a security breach. The secure keystore and secure connections are provided through a Common Criteria or FIPS 140 certified hardware-based cryptographic computing module.

Furthermore, signed video ensures that video evidence can be verified as untampered. Each camera uses its unique video signing key, which is securely stored in the secure keystore, to add a signature into the video stream allowing video to be traced back to the Axis camera from where it originated.

To read more about Axis Edge Vault, go to axis.com/solutions/edge-vault.

Forensic WDR

Axis cameras with wide dynamic range (WDR) technology make the difference between seeing important forensic details clearly and seeing nothing but a blur in challenging light conditions. The difference between the darkest and the brightest spots can spell trouble for image usability and clarity. Forensic WDR effectively reduces visible noise and artifacts to deliver video tuned for maximal forensic usability.

Lightfinder

The Axis Lightfinder technology delivers high-resolution, full-color video with a minimum of motion blur even in near darkness. Because it strips away noise, Lightfinder makes dark areas in a scene visible and captures details in very low light. Cameras with Lightfinder discern color in low light better than the human eye. In surveillance, color may be the critical factor to identify a person, an object, or a vehicle.

Zipstream

The Axis Zipstream technology preserves all the important forensic in the video stream while lowering bandwidth and storage requirements by an average of 50%. Zipstream also includes three intelligent algorithms, which ensure that relevant forensic information is identified, recorded, and sent in full resolution and frame rate.

For more information, see axis.com/glossary

AXIS M4317-PLVE Panoramic Camera

6 MP dome with 360° view and deep learning

With a 6 MP sensor, this discreet mini dome offers excellent image quality and a complete 180° or 360° overview. Featuring a stereographic lens and Sharpdome 360, it delivers greater sharpness at the edges of the image. Built-in IR illumination with individually controllable LEDs ensures clear, reflection-free footage and excellent image quality even in low light or complete darkness. A deep learning processing unit enables unique opportunities for analytics based on deep learning. Plus, AXIS Object Analytics can detect and classify humans, vehicles, and types of vehicles. Furthermore, Axis Edge Vault protects your Axis device ID and simplifies authorization of Axis devices on your network.

- > [Complete 180° and 360° overview](#)
- > [Built-in IR with individual IR LEDs](#)
- > [Support for deep learning analytics](#)
- > [Built-in cybersecurity features](#)
- > [Digital roll for ease of installation](#)



AXIS M4317-PLVE Panoramic Camera

Camera		ONVIF® Profile G, ONVIF® Profile M, ONVIF® Profile S, and ONVIF® Profile T, specification at onvif.org Support for Session Initiation Protocol (SIP) for integration with Voice over IP (VoIP) systems, peer to peer or integrated with SIP/PBX.
Image sensor	1/1.8" progressive scan RGB CMOS	
Lens	Focal length: 1.1 mm, F2.2 Horizontal field of view: 182° Vertical field of view: 182° Fixed iris, IR corrected, fixed focus	
Day and night	Automatic IR-cut filter	
Minimum illumination	Color: 0.16 lux at 50 IRE, F2.2 B/W: 0.03 lux at 50 IRE, F2.2 0 lux with IR illumination on	
Shutter speed	1/33500 s to 0.2 s	
Camera adjustment	Digital roll: ± 180°	
System on chip (SoC)		
Model	ARTPEC-8	
Memory	2048 MB RAM, 8192 MB Flash	
Compute capabilities	Deep learning processing unit (DLPU)	
Video		Compatible with AXIS Camera Station Edge, AXIS Camera Station Pro, AXIS Camera Station 5, and video management software from Axis' partners available at axis.com/vms .
Video compression	H.264 (MPEG-4 Part 10/AVC) Baseline, Main and High Profiles H.265 (MPEG-H Part 2/HEVC) Main Profile Motion JPEG	
Resolution	Overview: 2160x2160 to 160x160 Panorama: 2560x1440 to 192x72 Double Panorama: 2560x1920 to 384x288 Quad view: 2560x1920 to 384x288 View area 1-4: 1920x1440 to 256x144 Corner right and left: 2368x1184 to 192x72 Double corner: 2016x2016 to 384x288 Corridor: 2560x1920 to 256x144	
Frame rate	360° overview only up to max resolution without WDR: 50/60 fps @ 50/60 Hz 360° overview and 4 dewarped views up to max resolution with WDR: up to 25/30 fps @ 50/60 Hz	
Video streaming	Multiple, individually configurable streams in H.264, H.265 and Motion JPEG Axis Zipstream technology in H.264 and H.265 Controllable frame rate and bandwidth VBR/ABR/MBR H.264/H.265 Video streaming indicator	
WDR	Forensic WDR: Up to 120 dB depending on scene	
Noise reduction	Spatial filter (2D noise reduction) Temporal filter (3D noise reduction)	
Image settings	Saturation, contrast, brightness, sharpness, local contrast, tone mapping, white balance, day/night threshold, exposure mode, exposure zones, compression, mirroring, dynamic text and image overlay, polygon privacy mask	
Image processing	Axis Zipstream, Forensic WDR, Lightfinder, OptimizedIR	
Pan/Tilt/Zoom	Digital PTZ of view areas, digital PT of panorama, corner, corridor and quad views, preset positions, guard tours	
Audio		Device status: above operating temperature, above or below operating temperature, below operating temperature, casing open, IP address removed, live stream active, network lost, new IP address, system ready, within operating temperature Edge storage: recording ongoing, storage disruption, storage health issues detected I/O: digital input is active, digital output is active, manual trigger, virtual input is active MQTT: stateless Scheduled and recurring: schedule Video: average bitrate degradation, day-night mode, tampering
Audio features	Network speaker pairing	
Audio input/output	Audio features through portcast technology: two-way audio connectivity, voice enhancer	
Network		
Network protocols	IPv4, IPv6, USGv6, ICMPv4/ICMPv6, HTTP, HTTPS ^a , HTTP/2, TLS ^a , QoS Layer 3 DiffServ, FTP, SFTP, CIFS/SMB, SMTP, mDNS (Bonjour), UPnP ^b , SNMP v1/v2c/v3 (MIB-II), DNS/DNSv6, DDNS, NTP, NTS, RTSP, RTP, SRTP/RTSPS, TCP, UDP, IGMPv1/v2/v3, RTCP, DHCPv4/v6, SSH, LLDP, CDP, MQTT v3.1.1, Syslog, Link-Local address (ZeroConf), IEEE 802.1X (EAP-TLS), IEEE 802.1AR	
System integration		
Application Programming Interface	Open API for software integration, including VAPIX®, metadata and AXIS Camera Application Platform (ACAP); specifications at axis.com/developer-community . One-click cloud connection	
Video management systems	Compatible with AXIS Camera Station Edge, AXIS Camera Station Pro, AXIS Camera Station 5, and video management software from Axis' partners available at axis.com/vms .	
Onscreen controls	Privacy masks IR illumination Media clip	
Event conditions	Device status: above operating temperature, above or below operating temperature, below operating temperature, casing open, IP address removed, live stream active, network lost, new IP address, system ready, within operating temperature Edge storage: recording ongoing, storage disruption, storage health issues detected I/O: digital input is active, digital output is active, manual trigger, virtual input is active MQTT: stateless Scheduled and recurring: schedule Video: average bitrate degradation, day-night mode, tampering	
Event actions	Day-night mode: use while the rule is active I/O: toggle once, toggle while the rule is active Illumination: use lights, use lights while the rule is active Images: FTP, HTTP, HTTPS, SFTP, email and network share MQTT: publish Notification: HTTP, HTTPS, TCP and email Overlay text: use, use while the rule is active Recordings: record video, record video while the rule is active SNMP trap messages: send, send while the rule is active Status LED: flash, flash while the rule is active Video clips: FTP, HTTP, HTTPS, SFTP, email and network share WDR mode: set, set while the rule is active	
Built-in installation aids	Pixel counter, level grid, digital roll	
Analytics		
Applications	Included AXIS Object Analytics, AXIS Scene Metadata, AXIS Video Motion Detection, active tampering alarm Supported AXIS People Counter Support for AXIS Camera Application Platform enabling installation of third-party applications, see axis.com/acap	
AXIS Object Analytics	Object classes: humans, vehicles (types: cars, buses, trucks, bikes) Scenarios: line crossing, object in area, crossline counting, occupancy in area ^{BETA} Up to 10 scenarios Other features: triggered objects visualized with trajectories, color-coded bounding boxes and tables Polygon include/exclude areas ONVIF Motion Alarm event	
AXIS Scene Metadata	Object classes: humans, faces, vehicles (types: cars, buses, trucks, bikes) Object attributes: vehicle color, confidence, position	
Approvals		
Product markings	CSA, UL/cUL, BIS, UKCA, CE, KC	
Supply chain	TAA compliant	
EMC	EN 55035, EN 55032 Class A, EN 50121-4, EN 61000-6-1, EN 61000-6-2, EN 61547 Australia/New Zealand: RCM AS/NZS CISPR 32 Class A Canada: ICES-3(A)/NMB-3(A) Japan: VCCI Class A Korea: KS C 9835, KS C 9832 Class A USA: FCC Part 15 Subpart B Class A Railway: IEC 62236-4	
Safety	IEC/EN/UL 62368-1 ed. 3, CAN/CSA C22.2 No. 62368-1 ed. 3, IEC/EN 62471 risk group exempt, UN ECE R118, IS 13252	
Environment	IEC 60068-2-1, IEC 60068-2-2, IEC 60068-2-6, IEC 60068-2-14, IEC 60068-2-27, IEC 60068-2-78, IEC/EN 62262 IK10,	

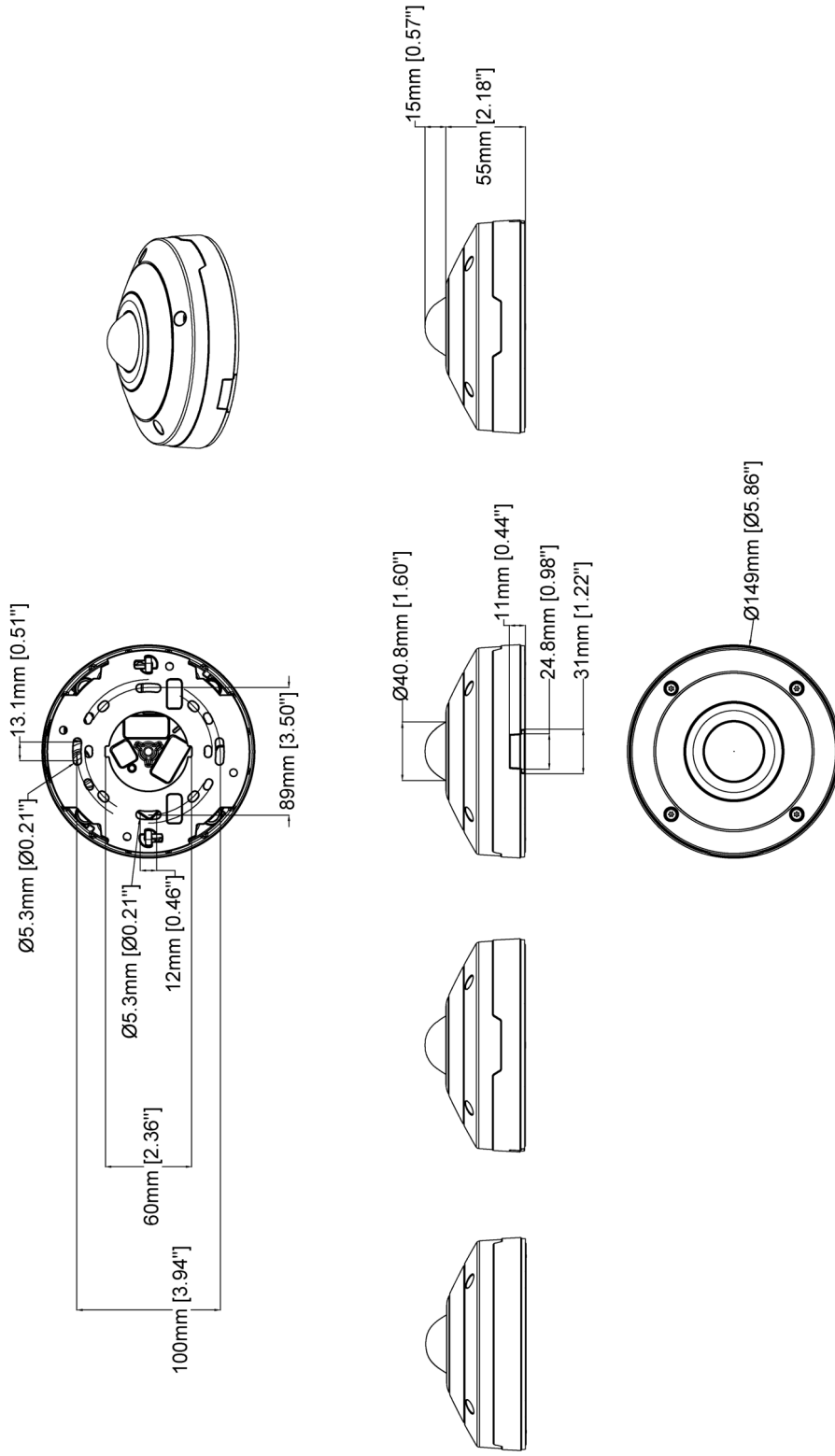
IEC/EN 60529 IP66, ISO 4892-2, NEMA 250 Type 4X, NEMA TS 2 (2.2.7-2.2.9), ISO 21207 (Method B)

Network	NIST SP500-267
Cybersecurity	ETSI EN 303 645
Cybersecurity	
Edge security	Software: Signed OS, brute force delay protection, digest authentication and OAuth 2.0 RFC6749 OpenID Authorization Code Flow for centralized ADFS account management, password protection, AES-XTS-Plain64 256bit SD card encryption Hardware: Axis Edge Vault cybersecurity platform Secure element (CC EAL 6+), system-on-chip security (TEE), Axis device ID, secure keystore, signed video, secure boot, encrypted filesystem (AES-XTS-Plain64 256bit)
Network security	IEEE 802.1X (EAP-TLS, PEAP-MSCHAPv2) ^a , IEEE 802.1AE (MACsec PSK/EAP-TLS), IEEE 802.1AR, HTTPS/HSTS ^a , TLS v1.2/v1.3 ^a , Network Time Security (NTS), X.509 Certificate PKI, host-based firewall
Documentation	<i>AXIS OS Hardening Guide</i> <i>Axis Vulnerability Management Policy</i> <i>Axis Security Development Model</i> AXIS OS Software Bill of Material (SBOM) To download documents, go to axis.com/support/cybersecurity/resources To read more about Axis cybersecurity support, go to axis.com/cybersecurity
General	
Casing	IP66-, NEMA 4X- and IK10-rated Polycarbonate hard-coated dome Aluminum Color: white NCS S 1002-B Repaintable skin cover accessory
Mounting	Mounting bracket with junction box holes (double-gang, single-gang, and 4" octagon) ¼"-20 UNC tripod screw thread
Power	Power over Ethernet (PoE) IEEE 802.3af/802.3at Type 1 Class 3 Typical 5.7 W, max 12.95 W
Connectors	Network: Shielded RJ45 10BASE-T/100BASE-TX PoE I/O: Terminal block for 1 supervised alarm input and 1 output (12 VDC output, max. load 25 mA) Audio: Audio and I/O connectivity via portcast technology
IR illumination	OptimizedIR with power-efficient, long-life 850 nm IR LEDs Range of reach 20 m (65.6 ft) depending on the scene
Storage	Support for microSD/microSDHC/microSDXC card Recording to network-attached storage (NAS) For SD card and NAS recommendations see axis.com

Operating conditions	-40 °C to 50 °C (-40 °F to 122 °F) Start-up temperature: -30 °C Humidity 10-100% RH (condensing)
Storage conditions	-40 °C to 65 °C (-40 °F to 149 °F) Humidity 5-95% RH (non-condensing)
Dimensions	Height: 70 mm (2.7 in) ø 149 mm (5.9 in) Effective Projected Area (EPA): 0.0076 m ² (0.025 ft ²)
Weight	860 g (1.9 lb)
Box content	Camera, installation guide, terminal block connector, connector guard, cable gaskets, cable hole lid, owner authentication key
Optional accessories	AXIS T8415 Wireless Installation Tool, AXIS T94T02D Pendant kit, AXIS TM3814 Skin Cover Black, AXIS TM3204 Recessed Mount, AXIS TM3206 Recessed Mount, AXIS Mounts and Cabinets, AXIS Surveillance Cards For more accessories, go to axis.com/products/axis-m4317-plve#accessories
System tools	AXIS Site Designer, AXIS Device Manager, product selector, accessory selector, lens calculator Available at axis.com
Languages	English, German, French, Spanish, Italian, Russian, Simplified Chinese, Japanese, Korean, Portuguese, Polish, Traditional Chinese, Dutch, Czech, Swedish, Finnish, Turkish, Thai, Vietnamese
Warranty	5-year warranty, see axis.com/warranty
Part numbers	Available at axis.com/products/axis-m4317-plve#part-numbers
Sustainability	
Substance control	PVC free, BFR/CFR free in accordance with JEDEC/ECA Standard J5709 RoHS in accordance with EU RoHS Directive 2011/65/EU and EN 63000:2018 REACH in accordance with (EC) No 1907/2006. For SCIP UUID, see axis.com/partner .
Materials	Renewable carbon-based plastic content: 29.6% (bio-based) Screened for conflict minerals in accordance with OECD guidelines To read more about sustainability at Axis, go to axis.com/about-axis/sustainability
Environmental responsibility	axis.com/environmental-responsibility Axis Communications is a signatory of the UN Global Compact, read more at unglobalcompact.org

a. This product includes software developed by the OpenSSL Project for use in the OpenSSL Toolkit. (openssl.org), and cryptographic software written by Eric Young (ey@cryptsoft.com).

Dimension drawing



Revision	v.01	Revision date	2022-08-30
Paper size	A4	Release date	2022-08-30
Created by	MF	Scale	1:4

© 2022 Axis Communications

Highlighted capabilities

AXIS Object Analytics

AXIS Object Analytics is a preinstalled, multifeatured video analytics that detects and classifies humans, vehicles, and types of vehicles. Thanks to AI-based algorithms and behavioral conditions, it analyzes the scene and their spatial behavior within – all tailored to your specific needs. Scalable and edge-based, it requires minimum effort to set up and supports various scenarios running simultaneously.

Axis Edge Vault

Axis Edge Vault is the hardware-based cybersecurity platform that safeguards the Axis device. It forms the foundation that all secure operations depend on and offer features to protect the device's identity, safeguard its integrity and protect sensitive information from unauthorized access. For instance, **secure boot** ensures that a device can boot only with **signed OS**, which prevents physical supply chain tampering. With signed OS, the device is also able to validate new device software before accepting to install it. And the **secure keystore** is the critical building-block for protecting cryptographic information used for secure communication (IEEE 802.1X, HTTPS, Axis device ID, access control keys etc.) against malicious extraction in the event of a security breach. The secure keystore and secure connections are provided through a Common Criteria or FIPS 140 certified hardware-based cryptographic computing module.

Furthermore, signed video ensures that video evidence can be verified as untampered. Each camera uses its unique video signing key, which is securely stored in the secure keystore, to add a signature into the video stream allowing video to be traced back to the Axis camera from where it originated.

To read more about Axis Edge Vault, go to axis.com/solutions/edge-vault.

Lightfinder

The Axis Lightfinder technology delivers high-resolution, full-color video with a minimum of motion blur even in near darkness. Because it strips away noise, Lightfinder makes dark areas in a scene visible and captures details in very low light. Cameras with Lightfinder discern color in low light better than the human eye. In surveillance, color may be the critical factor to identify a person, an object, or a vehicle.

OptimizedIR

Axis OptimizedIR provides a unique and powerful combination of camera intelligence and sophisticated LED technology, resulting in our most advanced camera-integrated IR solutions for complete darkness. In our pan-tilt-zoom (PTZ) cameras with OptimizedIR, the IR beam automatically adapts and becomes wider or narrower as the camera zooms in and out to make sure that the entire field of view is always evenly illuminated.

Zipstream

The Axis Zipstream technology preserves all the important forensic in the video stream while lowering bandwidth and storage requirements by an average of 50%. Zipstream also includes three intelligent algorithms, which ensure that relevant forensic information is identified, recorded, and sent in full resolution and frame rate.

For more information, see axis.com/glossary

AXIS P3737-PLE Panoramic Camera

4x 5 MP multidirectional with deep learning

This multidirectional camera offers four channels with 5 MP per channel to deliver excellent overviews and detailed coverage. It includes 360° IR illumination for clear, reflection-free footage and excellent image quality even in low light or complete darkness. This flexible camera offers various mounting options. For instance, it can be recessed mounted for discreet surveillance or mounted in ceilings for complete 360° coverage. With highly efficient power consumption, it ensures lower operating costs. It also supports powerful analytics based on deep learning. Furthermore, Axis Edge Vault, a hardware-based cybersecurity platform, guarantees the device's integrity and protects it from unauthorized access.

- > [4x 5 MP at 20 fps per channel](#)
- > [360° IR illumination with individually controlled LEDs](#)
- > [Flexible mounting options](#)
- > [Support for advanced analytics](#)
- > [Axis Edge Vault safeguards the device](#)



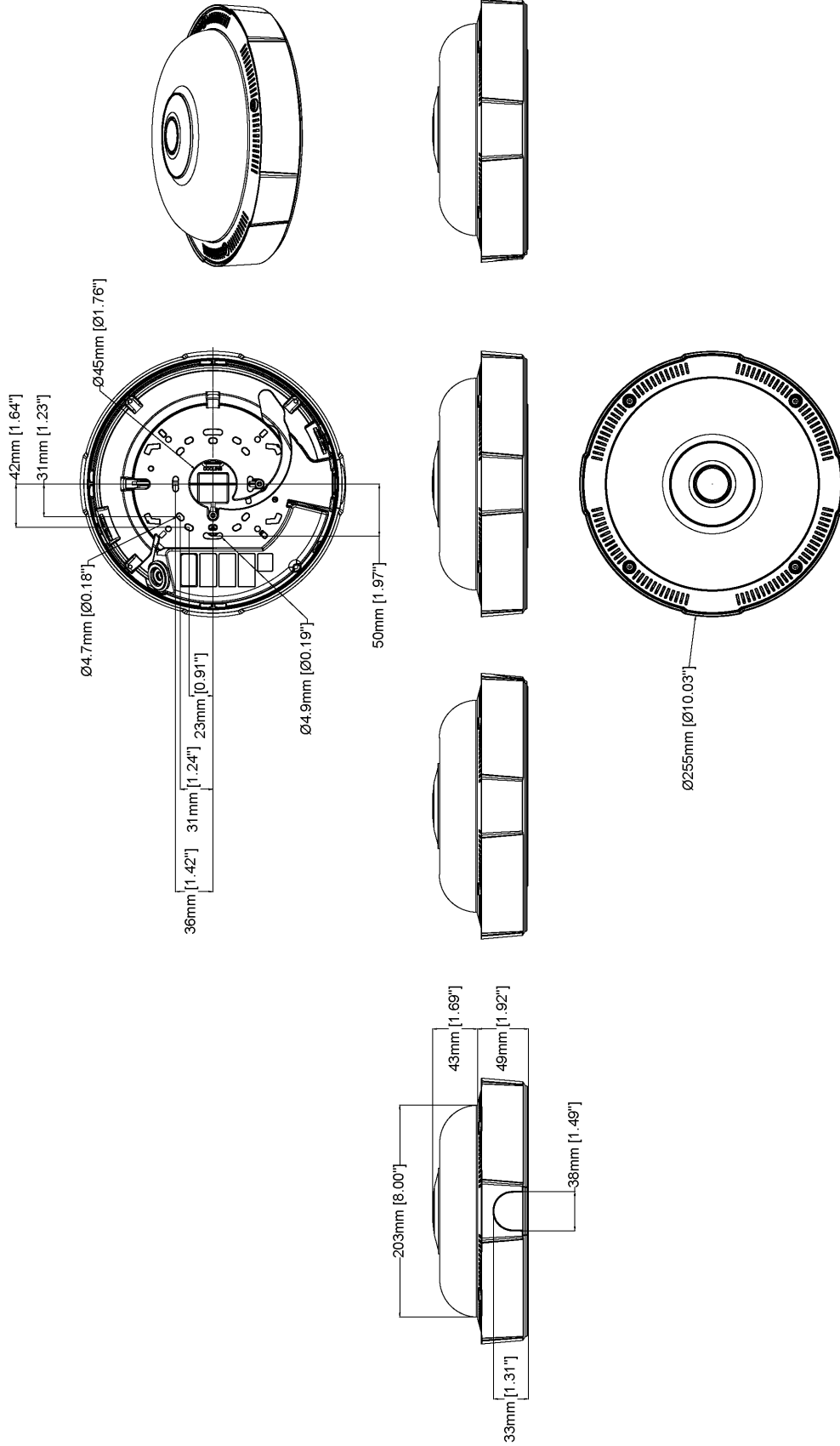
AXIS P3737-PLE Panoramic Camera

Camera		
Image sensor	4x 1/2.7" progressive scan RGB CMOS Pixel size 2.0 µm	One-click cloud connection ONVIF® Profile G, ONVIF® Profile M, ONVIF® Profile S, and ONVIF® Profile T, specifications at onvif.org
Lens	Varifocal, 3.2–8.1 mm, F1.9–3.2 Horizontal field of view: 99°–37° Vertical field of view: 70°–28° Diagonal field of view: 134°–47° Minimum focus distance: 0.5 m (1.6 ft) Fixed iris, IR corrected, remote zoom and focus	Video management systems Compatible with AXIS Camera Station Edge, AXIS Camera Station Pro, AXIS Camera Station 5, and video management software from Axis' partners available at axis.com/vms .
Day and night	Automatic IR-cut filter	Onscreen controls Autofocus Video streaming indicator IR illumination Privacy masks Media clip
Minimum illumination	Color: 0.19 lux at 50 IRE, F1.9 B/W: 0 lux at 50 IRE, F1.9 0 lux with IR illumination on	Edge-to-edge Speaker pairing
Shutter speed	5 MP and WDR on: 1/28000 s to 1/5 s Quad HD and WDR on: 1/33500 s to 1/5 s WDR off: 1/50000 s to 1/5 s	Event conditions Device status: above operating temperature, above or below operating temperature, below operating temperature, within operating temperature, IP address removed, new IP address, network lost, system ready, live stream active, casing open Edge storage: recording ongoing, storage disruption, storage health issues detected I/O: manual trigger, virtual input MQTT: stateless Scheduled and recurring: schedule Video: average bitrate degradation, day-night mode, tampering
Camera adjustment	Pan ±90°, tilt +25° to +95°, rotation -5° to +95°, twist ±20°	Event actions Day-night mode Illumination: use lights, use lights while the rule is active MQTT: publish Notification: HTTP, HTTPS, TCP, and email Overlay text Recordings: record, record while the rule is active SNMP traps: send, send while the rule is active Status LED: flash, flash while the rule is active Upload of images or video clips: FTP, SFTP, HTTP, HTTPS, network share, and email
System on chip (SoC)		
Model	ARTPEC-8	
Memory	4096 MB RAM, 8192 MB Flash	
Compute capabilities	Deep learning processing unit (DLPU)	
Video		
Video compression	H.264 (MPEG-4 Part 10/AVC) Baseline, Main and High Profiles H.265 (MPEG-H Part 2/HEVC) Main Profile Motion JPEG	
Resolution	4:3 4x 2592x1944 (4x 5 MP) to 4x 320x240 16:9 4x2560x1440 (4x Quad HD) to 4x 320x180	
Frame rate	5 MP: Up to 20/20 fps (50/60 Hz) in all resolutions Quad HD: Up to 25/30 fps (50/60 Hz) in all resolutions	
Video streaming	Multiple, individually configurable streams in H.264, H.265 and Motion JPG Axis Zipstream technology in H.264 and H.265 Controllable frame rate and bandwidth VBR/ABR/MBR H.264/H.265 Low latency mode Video streaming indicator	Built-in installation aids Remote zoom and focus, pixel counter, barrel distortion correction
Signal-to-noise ratio	>55 dB	Analytics
WDR	Forensic WDR: Up to 120 dB depending on scene	Applications Included AXIS Object Analytics, AXIS Scene Metadata, AXIS Video Motion Detection, active tampering alarm Supported Support for AXIS Camera Application Platform enabling installation of third-party applications, see axis.com/acap
Noise reduction	Spatial filter (2D noise reduction) Temporal filter (3D noise reduction)	Multisensor analytics 4 channels analytics support ⁹
Image settings	Saturation, contrast, brightness, sharpness, white balance, day/night threshold, local contrast, tone mapping, exposure mode, exposure zones, barrel distortion correction, compression, rotation: 0°, 90°, 180°, 270° including corridor format, mirroring, text and image overlay, dynamic text and image overlay, privacy masks, polygon privacy mask	AXIS Object Analytics Object classes: humans, vehicles (types: cars, buses, trucks, bikes, other) Scenarios: line crossing, object in area, time in area, crossline counting, occupancy in area Up to 8 scenarios Other features: triggered objects visualized with trajectories, and color-coded bounding boxes and tables Polygon include/exclude areas Perspective configuration ONVIF Motion Alarm event
Image processing	Forensic WDR, Lightfinder, OptimizedIR	AXIS Scene Metadata Object classes: humans, faces, vehicles (types: cars, buses, trucks, bikes), license plates Confidence, position Object attributes: vehicle color, upper/lower clothing color, confidence, position
Audio		
Audio input/output	Audio features through portcast technology: two-way audio connectivity with AXIS T61 Mk II	
Audio streaming	Two-way (half duplex, full duplex) via network speaker pairing technology	
Network		
Network protocols	IPv4, IPv6 USGv6, ICMPv4/ICMPv6, HTTP, HTTPS ^a , HTTP/2, TLS ^a , QoS Layer 3 DiffServ, FTP, SFTP, CIFS/SMB, SMTP, mDNS (Bonjour), UPnP [®] , SNMP v1/v2c/v3 (MIB-II), DNS/DNSv6, DDNS, NTP, NTS, RTSP, RTP, SRTP/RTSPS, TCP, UDP, IGMPv1/v2/v3, RTCP, ICMP, DHCPv4/v6, ARP, SSH, LLDP, CDP, MQTT v3.1.1, Secure syslog (RFC 3164/5424, UDP/TCP/TLS), Link-Local address (ZeroConf), IEEE 802.1X (EAP-TLS), IEEE 802.1AR	Approvals
System integration		Product markings CSA, UL/cUL, UKCA, CE, KC, EAC, VCCI, RCM
Application Programming Interface	Open API for software integration, including VAPIX [®] , metadata and AXIS Camera Application Platform (ACAP); specifications at axis.com/developer-community .	Supply chain TAA compliant
		EMC CISPR 35, CISPR 32 Class A, EN 55035, EN 55032 Class A, EN 50121-4, EN 61000-3-2, EN 61000-3-3, EN 61000-6-1, EN 61000-6-2 Australia/New Zealand: RCM AS/NZS CISPR 32 Class A Canada: ICES-3(A)/NMB-3(A) Japan: VCCI Class A Korea: KS C 9835, KS C 9832 Class A USA: FCC Part 15 Subpart B Class A Railway: IEC 62236-4

Safety	CAN/CSA C22.2 No. 62368-1 ed. 3, IEC/EN/UL 62368-1 ed. 3, IEC/EN 62471 risk group exempt, IS 13252, RCM AS/NZS 62368.1:2022,	For SD card and NAS recommendations see axis.com	
Environment	IEC 60068-2-1, IEC 60068-2-2, IEC 60068-2-6, IEC 60068-2-14, IEC 60068-2-27, IEC 60068-2-78, IEC/EN 60529 IP66/IP67, IEC/EN 62262 IK09, ISO 21207 (Method B), MIL-STD-810H (Method 501.7, 502.7, 505.7 506.6, 507.6 509.7, 512.6), NEMA 250 Type 4X, NEMA TS 2 (2.2.7-2.2.9), VDMA 24364	Operating conditions -30 °C to 50 °C (-22 °F to 122 °F) Humidity 10–100% RH (condensing) Maximum temperature according to NEMA TS 2 (2.2.7): 74 °C (165 °F)	
Network	NIST SP500-267, IPv6 USGv6	Storage conditions -40 °C to 65 °C (-40 °F to 149 °F) Humidity 5–95% RH (non-condensing)	
Cybersecurity	ETSI EN 303 645, FIPS 140	Dimensions For the overall product dimensions, see the dimension drawing in this datasheet. Effective Projected Area (EPA): 0.022 m ² (0.24 ft ²)	
Cybersecurity		Weight 2 kg (4.4 lb)	
Edge security	Software: Signed OS, brute force delay protection, digest authentication, password protection Hardware: Axis Edge Vault cybersecurity platform TPM 2.0 (CC EAL4+, FIPS 140-2 Level 2), secure element (CC EAL 6+), system-on-chip security (TEE), Axis device ID, secure keystore, signed video, secure boot, encrypted filesystem (AES-XTS-Plain64 256bit)	Box content Camera, installation guide, connector guard, cable gaskets	
Network security	IEEE 802.1X (EAP-TLS) ^a , IEEE 802.1AR, HTTPS/HSTS ^a , TLS v1.2/v1.3 ^a , Network Time Security (NTS), X.509 Certificate PKI, IP address filtering	Optional accessories AXIS TP3105-E Pendant Kit Black, AXIS TP3204-E Recessed Mount, AXIS TP3832-E Dome Smoked, AXIS TP3833-E Dome Casing Black, AXIS T94N01D Pendant Kit, AXIS TP3004-E Wall Mount Black, AXIS T8415 Wireless Installation Tool AXIS Surveillance Cards For more accessories, go to axis.com/products/axis-p3737-ple#accessories	
Documentation	<i>AXIS OS Hardening Guide</i> <i>Axis Vulnerability Management Policy</i> <i>Axis Security Development Model</i> AXIS OS Software Bill of Material (SBOM) To download documents, go to axis.com/support/cybersecurity/resources To read more about Axis cybersecurity support, go to axis.com/cybersecurity	System tools AXIS Site Designer, AXIS Device Manager, product selector, accessory selector, lens calculator Available at axis.com	
General		Languages English, German, French, Spanish, Italian, Russian, Simplified Chinese, Japanese, Korean, Portuguese, Polish, Traditional Chinese, Dutch, Czech, Swedish, Finnish, Turkish, Thai, Vietnamese	
Casing	IP66-, IP67-, NEMA 4X- and IK09-rated Polycarbonate hard-coated dome Aluminum and plastic casing, polycarbonate (PC) dome Color: white NCS S 1002-B For repainting instructions, go to the product's support page. For information about the impact on warranty, go to axis.com/warranty-implication-when-repainting .	Warranty 5-year warranty, see axis.com/warranty	
Mounting	Mounting bracket with junction box holes (double-gang, single-gang, 4" square, and 4" octagon) ½" (M20) conduit side entry	Part numbers Available at axis.com/products/axis-p3737-ple#part-numbers	
Power	Power over Ethernet (PoE) IEEE 802.3at Type 2 Class 4 IR illumination on: class 4, typical 13.25 W, max 23.30 W IR illumination off: class 3, typical 6.80 W, max 12.32 W	Sustainability	
Connectors	Network: Shielded RJ45 10BASE-T/100BASE-TX/1000BASE-T PoE	Substance control PVC free, BFR/CFR free in accordance with JEDEC/ECA Standard JS709 RoHS in accordance with EU RoHS Directive 2011/65/EU and EN 63000:2018 REACH in accordance with (EC) No 1907/2006. For SCIP UUID, see echa.europa.eu	Materials Renewable carbon-based plastic content: 17% (recycled: 9%, bio-based: 1%, carbon capture based: 7%) Screened for conflict minerals in accordance with OECD guidelines To read more about sustainability at Axis, go to axis.com/about-axis/sustainability
IR illumination	Optimized IR with power-efficient, long-life 850 nm IR LEDs Range of reach 15m (49.2 ft) or more depending on the scene	Environmental responsibility axis.com/environmental-responsibility Axis Communications is a signatory of the UN Global Compact, read more at unglobalcompact.org	
Storage	Support for microSD/microSDHC/microSDXC card Support for SD card encryption (AES-XTS-Plain64 256bit) Recording to network-attached storage (NAS)		

- a. This product includes software developed by the OpenSSL Project for use in the OpenSSL Toolkit. ([openssl.org](#)), and cryptographic software written by Eric Young ([eay@cryptsoft.com](#)).
- b. For more information, go to the User manual on [axis.com](#).

Dimension drawing



AXIS P3737-PLE Panoramic Camera

Revision	v.01	Revision date	2023-05-15
Paper size	A4	Release date	2023-05-15
Created by	MF	Scale	1:5

© 2023 Axis Communications

www.axis.com

Highlighted capabilities

AXIS Object Analytics

AXIS Object Analytics is a preinstalled, multifeatured video analytics that detects and classifies humans, vehicles, and types of vehicles. Thanks to AI-based algorithms and behavioral conditions, it analyzes the scene and their spatial behavior within – all tailored to your specific needs. Scalable and edge-based, it requires minimum effort to set up and supports various scenarios running simultaneously.

Axis Edge Vault

Axis Edge Vault is the hardware-based cybersecurity platform that safeguards the Axis device. It forms the foundation that all secure operations depend on and offer features to protect the device's identity, safeguard its integrity and protect sensitive information from unauthorized access. For instance, **secure boot** ensures that a device can boot only with **signed OS**, which prevents physical supply chain tampering. With signed OS, the device is also able to validate new device software before accepting to install it. And the **secure keystore** is the critical building-block for protecting cryptographic information used for secure communication (IEEE 802.1X, HTTPS, Axis device ID, access control keys etc.) against malicious extraction in the event of a secu-

rity breach. The secure keystore and secure connections are provided through a Common Criteria or FIPS 140 certified hardware-based cryptographic computing module.

Furthermore, signed video ensures that video evidence can be verified as untampered. Each camera uses its unique video signing key, which is securely stored in the secure keystore, to add a signature into the video stream allowing video to be traced back to the Axis camera from where it originated.

To read more about Axis Edge Vault, go to axis.com/solutions/edge-vault.

Zipstream

The Axis Zipstream technology preserves all the important forensic in the video stream while lowering bandwidth and storage requirements by an average of 50%. Zipstream also includes three intelligent algorithms, which ensure that relevant forensic information is identified, recorded, and sent in full resolution and frame rate.

For more information, see axis.com/glossary

AXIS Q3819-PVE Panoramic Camera

Panoramic camera for seamless, 180° coverage

AXIS Q3819-PVE delivers a 180° panoramic overview of extensive areas. With 14 MP resolution and seamless stitching of all four images, it offers 180° horizontal and 38° vertical coverage. It's possible to mount two cameras back-to-back for a complete 360° overview using AXIS T94V01C Dual Camera Mount. It features AXIS Object Analytics for nuanced and remarkably granular object classification. Furthermore, it includes built-in motors allowing for remote pan/tilt/roll functionality and it offers smart pairing with Axis network speakers using edge-to-edge technology. Furthermore, Axis Edge Vault protects your Axis device ID and simplifies authorization of Axis devices on your network.

- > **14 MP multisensor with seamless stitching**
- > **180° horizontal, 38° vertical coverage**
- > **AXIS Object Analytics**
- > **AXIS Edge Vault, TPM module and Lightfinder**
- > **Built-in motors for remote pan/tilt/roll**



AXIS Q3819-PVE Panoramic Camera

Camera		
Image sensor	4 x 5 MP 1/2.5" progressive scan RGB CMOS	
Lens	Fixed 5.9 mm, F1.88 Horizontal field of view: 180° Vertical field of view: 38°	
Day and night	Automatically removable infrared-cut filter	
Minimum illumination	With Forensic WDR and Lightfinder: Color: 0.16 lux, F2.0 B/W: 0.06 lux, F2.0	
Shutter speed	1/40000 to 1/25 s	
Camera adjustment	Pan ± 135° Tilt 15° to 92° Roll ± 8°	
System on chip (SoC)		
Model	ARTPEC-7 (x2)	
Memory	2048 MB RAM, 512 MB Flash	
Compute capabilities	Machine learning processing unit (MLPU)	
Video		
Video compression	H.264 (MPEG-4 Part 10/AVC) Baseline, Main and High Profiles H.265 (MPEG-H Part 2/HEVC) Main Profile Motion JPEG	
Resolution	8192x1728 (14.2 MP) to 608x128	
Frame rate	14.2 MP @ 25/30 fps (50/60 Hz) WDR	
Video streaming	One configurable stream in H.264, H.265 and Motion JPEG in full frame rate Multiple individually configurable streams in reduced frame rate Controllable frame rate and bandwidth VBR/ABR/MBR H.264/H.265 Low latency mode	
Image settings	Saturation, contrast, brightness, sharpness, Forensic WDR: up to 120 dB depending on scene, white balance, day/night threshold, exposure mode, compression, dynamic text and image overlay, orientation aid, exposure control, noise reduction, fine tuning of behavior at low light, polygon privacy masks	
Audio		
Audio streaming	Two-way audio via edge-to-edge technology	
Audio input/output	External microphone input, ring-power, digital audio input, automatic gain control, network speaker pairing	
Audio encoding	24bit LPCM, AAC-LC 8/16/32/48 kHz, G.711 PCM 8 kHz, G.726 ADPCM 8 kHz, Opus 8/16/48 kHz, 44.1 kHz ACC-LC, LPCM Configurable bit rate	
Network		
Security	IP address filtering, HTTPS ^a encryption, IEEE 802.1X (EAP-TLS) ^a network access control, user access log, centralized certificate management, signed video, secure keystore (CC EAL4 certified), TPM (FIPS 140-2 certified)	
Network protocols	IPv4, IPv6 USGv6, ICMPv4/ICMPv6, HTTP, HTTP/2, HTTPS ^a , TLS ^a , QoS Layer 3 DiffServ, FTP, SFTP, CIFS/SMB, SMTP, mDNS (Bonjour), UPnP [®] , SNMP v1/v2c/v3 (MIB-II), DNS/DNSv6, DDNS, NTP, NTS, RTSP, RTP, TCP, UDP, IGMP, RTCP, ICMP, DHCPv4/v6, ARP, SSH, LLDP, CDP, MQTT, Secure syslog (RFC 3164/5424, UDP/TCP/TLS), Link-Local address (ZeroConf)	
System integration		
Application Programming Interface	Open API for software integration ONVIF [®] Profile G, ONVIF [®] Profile M, ONVIF [®] Profile S and ONVIF [®] Profile T, specification at onvif.org	
Event conditions	Analytics, external input, supervised external input, edge storage events, virtual inputs through API Audio: audio detection Digital audio: digital signal contains Axis metadata, digital signal as invalid sample rate, digital signal missing, digital signal ok Device status: above operating temperature, above or below operating temperature, below operating temperature, fan failure, IP address removed, network lost, new IP address, shock detected, storage failure, system ready, within operating temperature, casing open, ring power overcurrent protection	
		Edge storage: recording ongoing, storage disruption, storage health issues detected I/O: digital input, manual trigger, virtual input MQTT subscribe Scheduled and recurring: scheduled event Video: live stream open, average bitrate degradation, day-night mode, tampering
Event actions	Day/night mode, overlay text, video recording to edge storage, pre- and post-alarm video buffering, send SNMP trap, play audio clip I/O events, status LED events File upload: FTP, SFTP, HTTP, HTTPS network share, email MQTT publish Notification: email, HTTP, HTTPS TCP	
Built-in installation aids	Remote Pan/tilt/roll: designed to withstand at least 200 full cycles, autoroll, pixel counter, leveling guide	
Analytics		
Applications	Included AXIS Object Analytics AXIS Video Motion Detection, AXIS Scene Metadata, AXIS Motion Guard, AXIS Fence Guard, AXIS Loitering Guard, active tampering alarm, audio detection Supported Support for AXIS Camera Application Platform enabling installation of third-party applications, see axis.com/acap	
AXIS Object Analytics	Object classes: humans, vehicles Scenarios: line crossing, object in area Up to 10 scenarios Other features: triggered objects visualized with trajectories, color-coded bounding boxes and tables Polygon include/exclude areas Perspective configuration ONVIF Motion Alarm event	
AXIS Scene Metadata	Object classes: humans, faces, vehicles (types: cars, buses, trucks, bikes), license plates Object attributes: confidence, position	
Approvals		
EMC	EAC, EN 55032 Class A, EN 55035, EN 50121-4, EN 55024, EN 61000-6-1, EN 61000-6-2, CISPR 24, CISPR 35 Australia/New Zealand: RCM AS/NZS CISPR 32 Class A Canada: ICES-3(A)/NMB-3(A) Japan: VCCI Class A Korea: KC KN32 Class A, KC KN35 USA: FCC Part 15 Subpart B Class A Railway: IEC 62236-4	
Safety	IEC/EN/UL 60950-22, IEC/EN/UL 62368-1, CAN/CSA C22.2 No. 62368-1, CAN/CSA-C22.2 No. 60950-22, IS 13252	
Environment	IEC 60068-2-1, IEC 60068-2-2, IEC 60068-2-6, IEC 60068-2-14, IEC 60068-2-27, IEC 60068-2-78, IEC/EN 60529 IP66/IP67, IEC/EN 62262 IK10, NEMA 250 Type 4X, NEMA TS 2 (2.2.7-2.2.9), MIL-STD-810H (Method 501.7, 502.7, 505.7, 506.6, 507.6, 509.7, 512.6)	
Network	NIST SP500-267	
Cybersecurity	ETSI EN 303 645, FIPS 140	
Cybersecurity		
Edge security	Software: Signed OS, brute force delay protection, digest authentication and OAuth 2.0 RFC6749 OpenID Authorization Code Flow for centralized ADFS account management, password protection, AES-XTS-Plain64 256bit SD card encryption Hardware: Axis Edge Vault cybersecurity platform TPM 2.0 (CC EAL4+, FIPS 140-2 Level 2), secure element (CC EAL 6+), Axis device ID, secure boot	
Network security	IEEE 802.1X (EAP-TLS, PEAP-MSCHAPv2) ^a , IEEE 802.1AE (MACsec PSK/EAP-TLS), IEEE 802.1AR, HTTPS/HSTS ^a , TLS v1.2/v1.3 ^a , Network Time Security (NTS), X.509 Certificate PKI, host-based firewall	
Documentation	AXIS OS Hardening Guide Axis Vulnerability Management Policy Axis Security Development Model AXIS OS Software Bill of Material (SBOM)	

To download documents, go to axis.com/support/cybersecurity/resources

To read more about Axis cybersecurity support, go to axis.com/cybersecurity

General	
Casing	IP66-/IP67- and NEMA 4X-rated, IK10-rated impact-resistant casing with polycarbonate hard coated clear dome, aluminum base and dehumidifying membrane Color: white NCS S 1002-B Casing open detection For repainting instructions and impact on warranty, contact your distributor partner.
Mounting	Mounting bracket with junction box holes (double-gang, single-gang, 4" square, and 4" octagon) and for wall or ceiling mount ¾" (M25) conduit side entries
Sustainability	PVC free
Power	Power over Ethernet (PoE) IEEE 802.3at Type 2 Class 4 Typical 12 W, max 22.5 W
Connectors	Shielded RJ45 1000BASE-T Terminal block for two configurable supervised inputs/digital outputs (12 V DC output, max load 50 mA), 3.5 mm analog/digital mic/line in
Storage	Support for microSD/microSDHC/microSDXC card Support for SD card encryption (AES-XTS-Plain64 256bit) Support for recording to network-attached storage (NAS)
Operating conditions	-40 °C to 50 °C (-40 °F to 122 °F) Humidity 10–100% RH (condensing) Maximum temperature according to NEMA TS 2 (2.2.7): 74 °C (165 °F)

	Start-up temperature: -40 °C
Storage conditions	-40 °C to 65 °C (-40 °F to 149 °F) Humidity 5–95% RH (non-condensing)
Dimensions	Height: 170 mm (6.6 in) ø 195 mm (7.6 in) <i>With weathershield:</i> Height: 221 mm (8.7 in) ø 206 mm (8.1 in)
Weight	2.4 kg (4.5 lb)
Mounting height	Recommended: 4 m and up
Included accessories	Installation guide, Windows® decoder 1-user license, weathershield, RESITORX® T20 screw bit, connector guard
Optional accessories	AXIS T8415 Wireless Installation Tool AXIS Surveillance Cards AXIS TQ3102 Pendant Kit AXIS TQ3101-E Pendant Kit AXIS TQ3201-E Recessed Mount ^b For more accessories, see axis.com
Languages	English, German, French, Spanish, Italian, Russian, Simplified Chinese, Japanese, Korean, Portuguese, Traditional Chinese, Dutch, Czech, Swedish, Finnish, Turkish, Thai, Vietnamese
Warranty	5-year warranty, see axis.com/warranty

- a. *This product includes software developed by the OpenSSL Project for use in the OpenSSL Toolkit. (openssl.org), and cryptographic software written by Eric Young (eyay@cryptsoft.com).*
- b. *The camera's tampering alarm doesn't work when mounted in AXIS TQ3201-E Recessed Mount*

Streamvault SV-300E

All-in-one security appliance

The Streamvault™ SV-300E all-in-one security appliance helps you move to a unified system combining video surveillance, access control, intrusion, and communications more efficiently. It combines all the capabilities you need to secure a small site in a single device, simplifying both installation and maintenance.

Guaranteed performance

- up to
> 32
 cameras
- up to
> 100
 readers
- up to
> 32
 ALPR
 cameras
- up to
> 60TB
 storage



Key features

Turnkey appliance with Genetec™ Security Center pre-installed

Local recording and monitoring of video, access control, and other security events

Machine learning endpoint protection

3-year hardware warranty

Benefits



Speed up your deployment – Get your security system up and running quickly and efficiently with Security Center pre-installed and built-in wizard-based tools to configure your system.



Protect your security system – Streamvault appliances help you build a resilient security system that protects your data and operations. Our cyber security experts stay vigilant on evolving threats and help identify and address new vulnerabilities promptly.



Reduce your system's footprint – With Security Center and the SV-300E, you can consolidate video, access control, intrusion detection, and other security systems on a single device.

Applications

Retail

Standardize your processes across your entire chain. The Streamvault SV-300E appliance lets you record and monitor video locally, and makes it easy to connect remote sites with a centralized location.

Education

The Streamvault SV-300E series lets you monitor entries and exits with unified video and access control, so you can keep staff and students safe across your school.

Banking

Combine video, access control, and intrusion systems in a single platform and enhance security across your installations.

Technical specifications

OS

Windows 11 IoT Enterprise

Processor

SV-300E : Intel® Core™ i5
Passmark: 13346

Memory

16 GB DDR4

Ethernet

SV-300E: Onboard 1 GbE RJ45

Peripherals

SV-300E: Front: 2x USB 2.0, 1x USB 3.2 Type-A, 1x USB 3.2 Type-C

Rear: 3x USB 3.2 Gen 2 Type-A, 1x USB 3.2 Gen 1 Type A, 2x USB 2.0

SV-300E-T4: Front: 2x USB 3.2 Gen 1 Type-A, 2x USB 3.2 Type-C

Rear: 2x USB 3.2 Gen 2 Type-A, 2x USB 3.2 Type-C, 2x USB 2.0

Display

SV-300E: 3x DisplayPort

SV-300E-T4: 2x DisplayPort

Mechanical and environmental

Operating temperature

50°F to 95°F (10°C to 35°C)

Operating humidity

5 - 90% (non-condensing)

Certifications

Regulatory IEC 60950-1, European Norm EN 60950-1, CISPR 22/CISPR 24, EN55022/55024

Storage

Drive type

3.5" Dell Enterprise SATA drives

OS drive

1x 256 GB 2.5" SSD

Maximum data storage

60 TB

Cybersecurity

Endpoint protection

BlackBerry Protect machine learning antivirus

Hardened image

200+ security settings changed by default

Maintenance

Verified Windows updates
Connected services for Genetec software and device firmware updates

Warranty and support

Hardware warranty

3-year warranty

Security Center support

All general availability, restricted availability, and extended maintenance versions

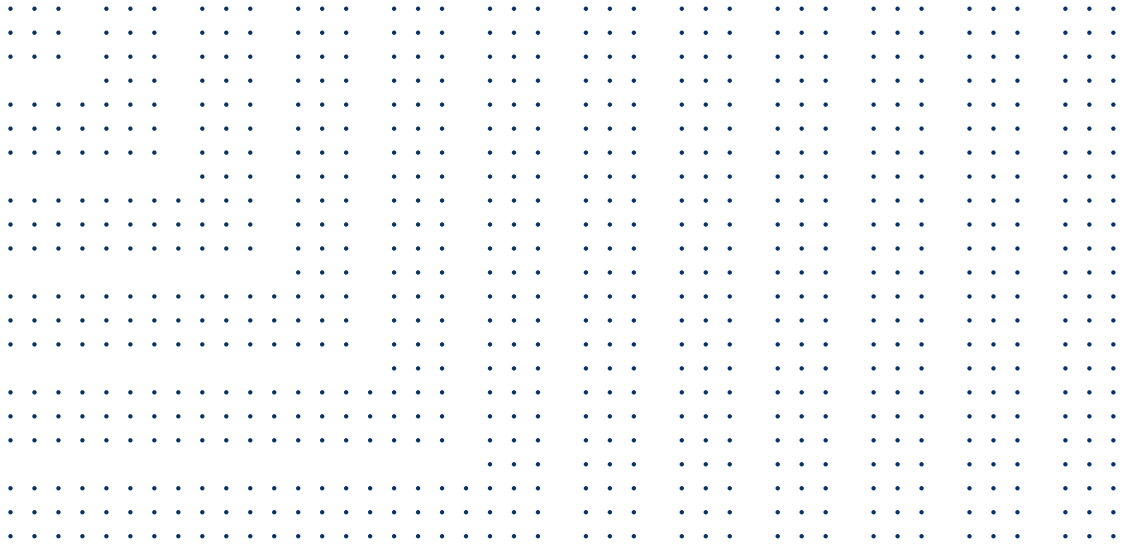
Models

Model	Form factor	Dimensions (W x D x H)	Weight	Power supply
SV-300E	Small form factor	3.7" x 11.5" x 11.4" (92.6 mm x 292 mm x 290 mm)	12.4 lbs (5.6 kg)	1x 300W
SV-300E-T4	Tower	6.81" x 16.54" x 14.68" (173 mm x 420 mm x 369 mm)	34.8 lbs (15.8 kg)	1x 500W

*Hardware specifications are subject to change. Units provided will be equivalent or superior to what is shown in this document.



Working smarter with video



Security Center Omnicast™ is a video management solution that gives you a clear picture of events and empowers you to quickly react to threats. The system scales with your needs and lets you take advantage of the latest hardware and analytics technologies. With a smarter approach to video, your operations and security improve over time, helping you to take better, more informed decisions.

Omnicast key benefits



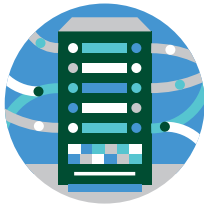
See it all

Unify video with other core security systems such as access control, automatic license plate recognition (ALPR), intrusion monitoring and communications. Get a common operating picture by navigating between multiple sites and monitoring all of your entities on a single interface.



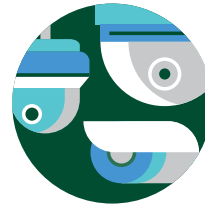
Take the right action

Rely on insights and smart data to respond to what matters and automate everything else. Our suite of unified video analytics helps you understand the situation at hand, so you can react quicker and improve your daily operations.



Fits with any hardware

Omnicast lets you tap into a constantly evolving ecosystem of technologies and choose the devices that make the most sense to your organization. The VMS supports thousands of industry-leading cameras, encoders, storage equipment, sensors and other security devices of your choice.



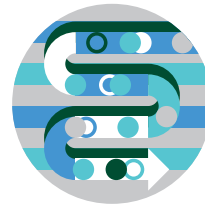
Grows with your organization

Benefit from a flexible and open architecture that grows with you. Omnicast scales to meet the changing needs of your organization, no matter the size. Get the peace of mind knowing that your video system will keep pace as conditions evolve.



Protect your system and your data

Ensure full protection of your video, data, and communications. With at-rest and in-transit encryption, managed certificates, authenticated connectivity and automated anonymization of video footage, you can ensure privacy without sacrificing security.

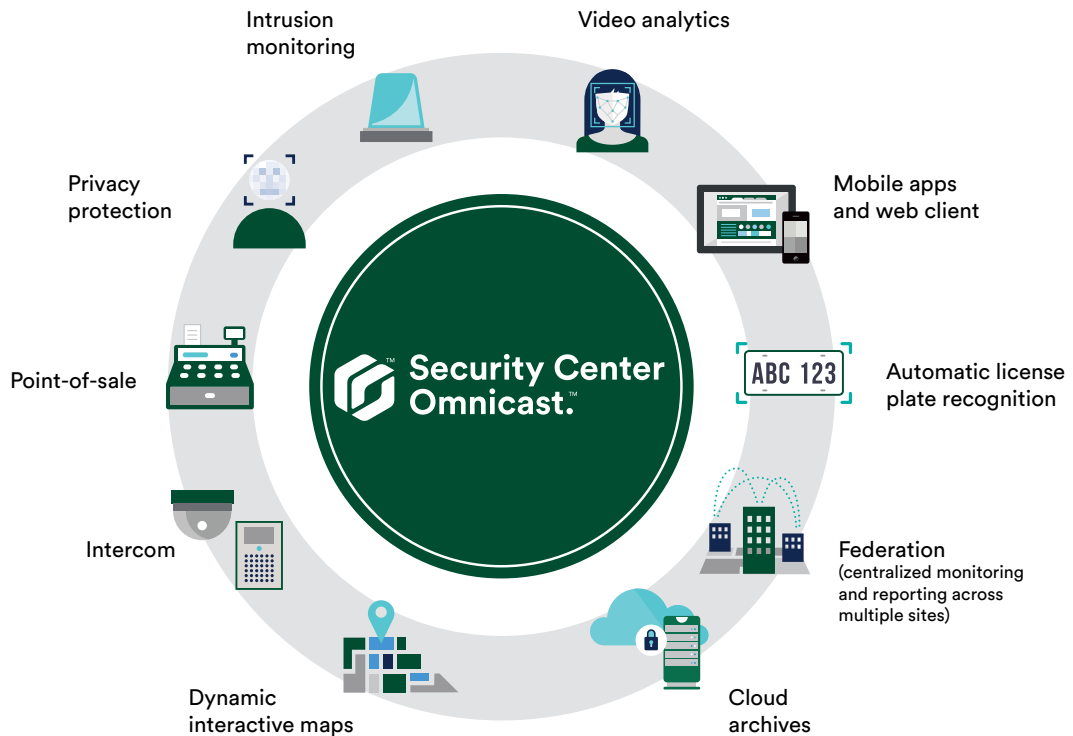


Available when you need it most

Experience uninterrupted access to live and recorded video at all times, even if you lose connectivity to your server. With built-in failover and redundancy, Omnicast protects your recordings from network failure and physical damage.

A system that grows with your organization

Omnicast lets you grow your system over time, ensuring you're never locked into a proprietary solution. The flexible and scalable architecture allows you to add devices and technologies from a variety of manufacturers. The system supports an unrestricted number of workstations and lets you interconnect as many sites as you need.



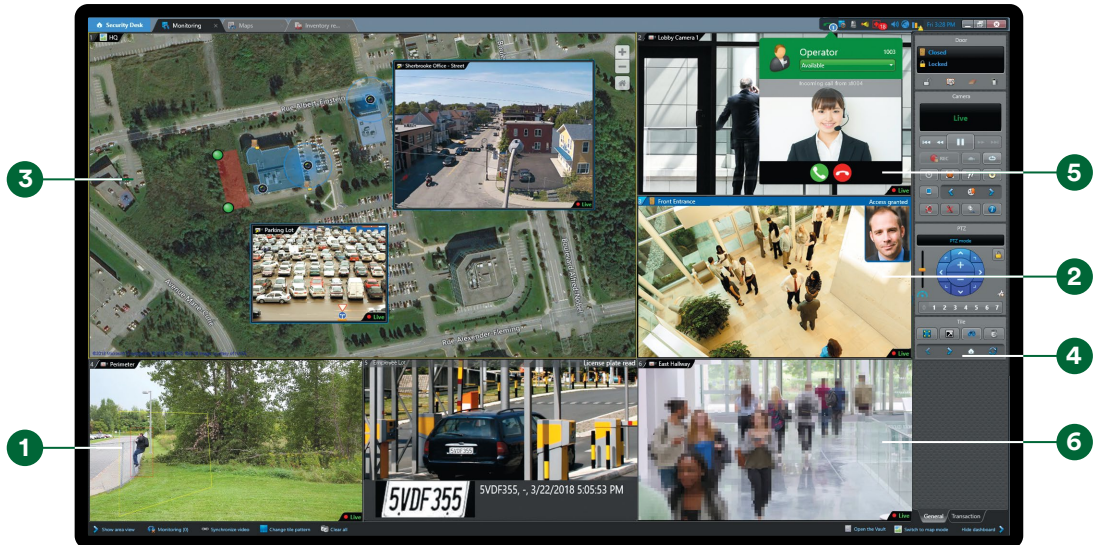
Deploy on your own terms

When you choose Omnicast, you have options for owning and deploying on your own terms. You can deploy a fully on-premises system, using your existing infrastructure, or our secure ready-to-deploy infrastructure solutions.

You can also opt for a hybrid video management system that combines Stratocast™ cloud-based systems federated into your on-premises Omnicast system. Our Cloud Archives service ensures your video evidence is stored in a secure, off-site location.

Get a clear view of the situation

Seamlessly control all operations and rapidly respond to emerging situations with a single, modular platform. The intuitive user interface provides access to rich information, while minimizing complexity for the operator. Video controls and dashboards adapt to the situation and dynamic maps let you quickly navigate between sites and building floors.



1 Automate security

Receive instant notifications and automate security tasks with intrusion and object detection analytics.

2 Live cardholder verification

Authenticate cardholder identities against live or recorded video by viewing camera feeds associated to door activity.

3 Interactive maps

Efficiently monitor and manage all your sites with interactive maps that provide a dynamic view of all security devices, alarms and system statuses.

4 Dynamic dashboard

Take action through an adaptive dashboard that automatically displays commands and controls associated with the currently selected camera, door, or area.

5 Embedded call management

Place a video call to another operator, or answer an incoming call from an intercom station, directly in the Security Center interface.

6 Anonymize people

Automatically blur or mask individuals in the camera's field of view, without obscuring actions and movements.

Augment your video surveillance system

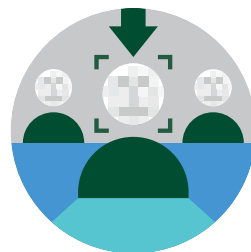
With so many cameras and other security devices to monitor, operators are often overloaded with video and sensor data. Omnicast gives you the ability to add intelligence to your video monitoring with a wide range of modules that help ensure you're looking in the right place. It transforms your data into actionable information, so you better understand situations and make the right decision at the right time.



Automated security

Secure your perimeter and prevent security breaches with real-time video analytics. Track and recognize individuals or objects in sensitive areas and be notified of unusual activity.

- Intrusion detection
- Object detection
- Facial recognition



Privacy protection

Protect the privacy of people with real-time anonymization, or by masking people's faces before sharing evidence, all the while keeping movements, actions and events recognizable.

- Live video blurring and masking
- After-the-fact privacy masking



Improving your operations

Automate maintenance by monitoring the health of your cameras and improve your everyday operations with a better understanding of the flow of people and vehicles in your environment.

- Camera integrity monitor
- Queue detection
- People and vehicle counting



Smart investigations

Narrow down investigations and take quicker actions by adding automation in the process. Define an area of interest, or specific search criteria, and let the software do the work.

- Forensics search
- Video synopsis

Omnicast key features

Open platform

Omnicast supports the cameras of your choice and operates seamlessly over your network. The VMS supports thousands of camera models, from more than 100 manufacturers.

Intelligent streaming

Grow your system and avoid network overload with advanced video streaming and bandwidth management capabilities. Omnicast gives you full control over how data is transferred and lets you deploy a mix of multicast and unicast streams that makes the most sense for your situation.

Powerful investigation tools

Find evidence faster with built-in investigation tools and 3rd party add-ons. Summarize hours of video surveillance recordings into a short brief that takes only a few moments to review.

Mobile and web apps

Use the Security Center Mobile apps to view video feeds and instantly share video from mobile devices. You can also monitor alarms and activate threat levels on the go.

Video walls and remote displays

Enhance collaboration amongst operators through video walls and remote displays that are easy to set up and manage in our software.

Unified video analytics

Automate security and improve your operations and maintenance. Our suite of video analytics allows you to quickly detect intruders, gather insights into your environment and monitor the health of your cameras.

Failover and redundancy

Count on the availability of your video recordings and access to your cameras whenever you need them with built-in failover and redundancy mechanisms that protect against hardware failure or network interruptions.

End-to-end data security and privacy

Benefit from a cybersecure solution with end-to-end video encryption, in transit or at rest. Omnicast uses secure methods to transmit video, such as the Secure Real-Time Transport Protocol (SRTP).

Versatile retention

Automate the management of longer-term storage with on-premises (dedicated servers) or in the cloud. Omnicast lets you archive your video with various quality and retention periods.

Centralized monitoring

Grow your security system and add new remote sites with Federation™. This feature allows for multi-site video monitoring and reporting, in a flexible and secure architecture.

Comprehensive feature list

Unified security platform

Unified with access control, ALPR, and intrusion detection
In-app video conference using SIP-based communications
Built-in video analytics and automated privacy masking
Support for thousands of IP and analog cameras, encoders, and portfolio of partner add-ons.
On-premises and cloud-based deployment options
Connected services (automated software and firmware updates, health monitoring)

Architecture

IP-based security platform
Distributed, client-server, multi-site architecture
Compatible with 3rd party virtualization solutions
Embedded health monitoring and reporting engines
Support for Microsoft Active Directory user accounts
Backward and forward compatibility for servers, clients, and Federation

Video analytics

Intrusion and object detection
People counting
Camera integrity monitoring
Forensics investigation

User experience

Single application for monitoring and reporting
Thick, thin (web-based), and mobile client apps
Interactive map-based monitoring that supports geo-located maps, ArcGIS data and custom floor plans.
Dynamic visual reporting with charts and histograms
In-tile camera controls including PTZ, recording, snapshots and bookmarks
Navigate using physical references with Visual tracking
Flexible rules engine to automate processes
Automatic camera discovery and enrollment
Alarms and threat level management

Visualization

GPU-accelerated encoding and decoding
Support for latest video technologies, including 4K, 8K and H.265
Video wall support (hardware and remote software)

Adaptive resolution scaling

Play up to 64 G64/G64x videos simultaneously in the Genetec™ Video Player
Side-by-side live and recorded video

Storage & resilience

Complete system failover capabilities, including Directory, Archiver and other roles.
Hot standby, redundant, and auxiliary archiving
Schedule-based archive transfer to long-term storage
Multi-stage storage combining edge recording, local, and cloud-based archives
Edge recording and video trickling

Streaming

Dynamic stream selection
End-to-end multicast from camera to server, incl. mixed-mode and multicast to unicast (and vice-versa) conversion
Client-side caching of live video
Support for metadata exchange, export and storage
Multi-stream of live and recorded video at different qualities from the same camera

Cybersecurity and privacy protection

HTTPS camera connectivity
Secure Real-Time Transport Protocol (SRTP) – supported with certain partner devices
AES-128 video encryption, with AES-256 for Cloud Archives
Fusion stream encryption
Video watermarking to protect from tampering
RTSP over TLS
Video anonymization with encrypted source archive

Partner add-ons

Elevator dispatch and building automation
Perimeter and fence protection, radar, laser systems
Intrusion detection systems, gunshot detection
Biometrics and 3rd party access control systems
Video analytics, face recognition, forensics search
Asset management and tracking, ID scanning
Point-of-sale, and ATM and parking systems

Security Center Omnicast editions

Ownership model – perpetual or subscription

Omnicast is available in four different packages. You can own your system through a perpetual license or begin your move to a services-based ownership model. Consult the table below to find out which option is best for you.

Editions	Standard	Pro	Enterprise	SaaS
Maximum number of cameras	50	250	Unrestricted	Unrestricted
Maximum number of clients	5	10	Unrestricted	Unrestricted
Number of archivers	1	20	Unrestricted	Unrestricted
Plan Manager	●	●	●	●
Cloud archives	●	●	●	●
GPU-accelerated video decoding	●	●	●	●
Video stream & recording	●	●	●	●
Encryption with AES-128/256	●	●	●	●
Federation-as-a-Service	●	●	●	●
H.265 support	●	●	●	●
Remote Security Desk		●	●	●
Native archiver & directory failover			○	●
Federation*			○	●

● Included or supported ○ Optional * Federation host must be Enterprise. Federated sites can be Standard, Pro, or Enterprise.

Build your system on a strong foundation with Streamvault

Streamvault™ is our line of secure, ready-to-deploy security infrastructure solutions that help you reduce system design and installation time. With Security Center pre-loaded, Streamvault simplifies deployment and maintenance and offers you a clear path to unify your security operations.



All-in-one: Compact and versatile appliance that combines server and workstation in a single device.



Rackmount: High performance and scalability for various deployments.

Workstations: Fluid live viewing and playback of high-resolution video streams.

Genetec Inc.

genetec.com/locations
info@genetec.com
@genetec

© Genetec Inc., 2018. Genetec, Omnicast, Federation, Streamvault, the Genetec Logo, the Omnicast Logo and the Mobius Strip Logo are trademarks of Genetec Inc., and may be registered or pending registration in several jurisdictions.