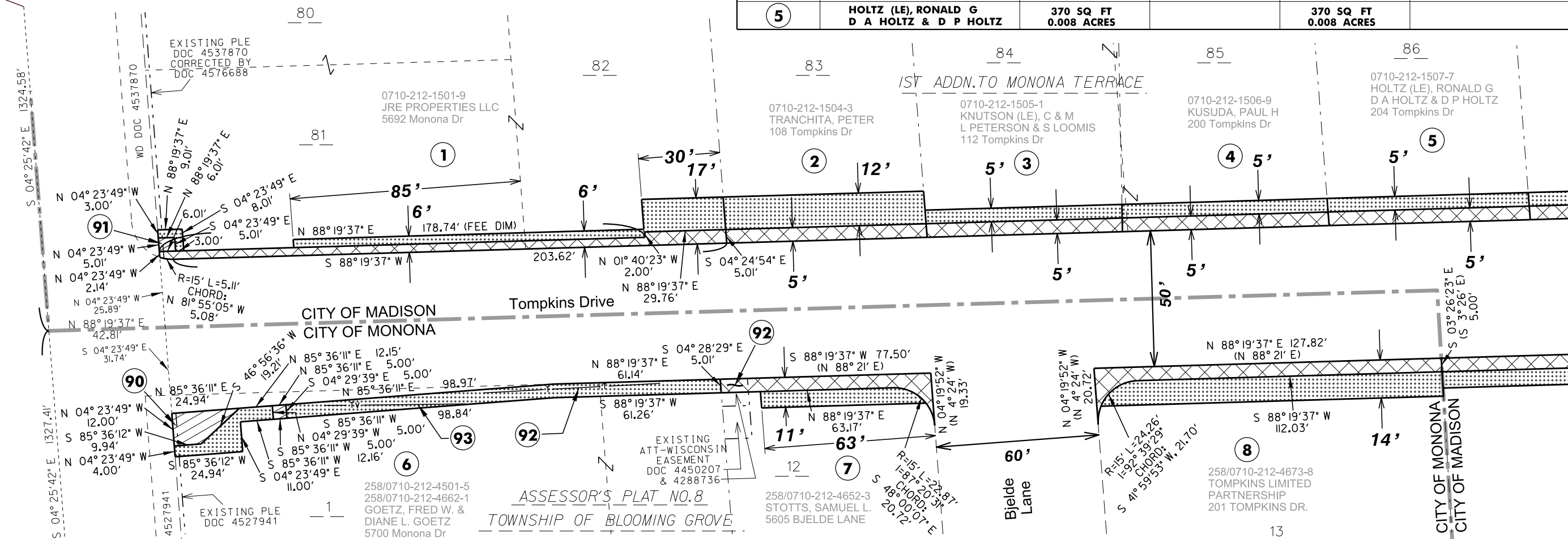




# Madison, Wisconsin

NW CORNER  
SEC 21, T7N-R10E  
N: 478198.97  
E: 836666.97



- FEE
- PLE
- TLE
- EXISTING ROW
- PROPERTY LINE
- EXISTING EASEMENT

RELOCATION ORDER APPROVED BY THE PLAN COMMISSION:		RELOCATION ORDER APPROVED BY THE BOARD OF PUBLIC WORKS:		RELOCATION ORDER APPROVED BY THE COMMON COUNCIL:	
EXECUTIVE SECRETARY	DATE	EXECUTIVE SECRETARY	DATE	CITY CLERK	DATE

### SCHEDULE OF INTERESTS REQUIRED

PARCEL #	OWNER NAME	FEE AREA REQUIRED	PLE AREA REQUIRED	TLE AREA REQUIRED	CONSENT TO OCCUPY/ RELEASE OF RIGHTS
1	JRE PROPERTIES LLC	684 SQ FT 0.016 ACRES	30 SQ FT 0.0007 ACRES	790 SQ FT 0.018 ACRES	
2	TRANCHITA, PETER	369 SQ FT 0.008 ACRES		885 SQ FT 0.020 ACRES	
3	KNUTSON (LE), C & M L PETERSON & S LOOMIS	361 SQ FT 0.008 ACRES		362 SQ FT 0.008 ACRES	
4	KUSUDA, PAUL H & ATSUKO S	381 SQ FT 0.009 ACRES		378 SQ FT 0.009 ACRES	
5	HOLTZ (LE), RONALD G D A HOLTZ & D P HOLTZ	370 SQ FT 0.008 ACRES		370 SQ FT 0.008 ACRES	

PARCEL #	OWNER NAME	FEE AREA REQUIRED	PLE AREA REQUIRED	TLE AREA REQUIRED	CONSENT TO OCCUPY/ RELEASE OF RIGHTS	RIGHT OF ENTRY
6	GOETZ, FRED W. & DIANE L. GOETZ		234 SQ FT 0.005 ACRES	1,051 SQ FT 0.024 ACRES		
7	STOTTS, SAMUEL L.	431 SQ FT 0.010 ACRES		342 SQ FT 0.008 ACRES		
8	TOMPKINS LIMITED PARTNERSHIP	693 SQ FT 0.016 ACRES		1,099 SQ FT 0.025 ACRES		
90	DANE CO AS TRUSTEES FOR WI DEPT OF TRANS				18 SQ FT 0.0004 ACRES	
91	DANE CO AS TRUSTEES FOR WI DEPT OF TRANS				7.5 SQ FT 0.0002 ACRES	
92	AT&T - WISCONSIN				50 SQ FT 0.001 ACRES	BURIED CABLE
93	CHARTER COMMUNICATIONS					BURIED CABLE

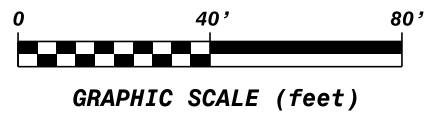
ASSESSOR'S PLAT NO. 8  
TOWNSHIP OF BLOOMING GROVE

## CITY OF MADISON RELOCATION ORDER

"PLAT OF LAND INTERESTS REQUIRED FOR THE CONSTRUCTION  
AND MAINTENANCE OF IMPROVEMENTS FOR TOMPKINS DRIVE",  
LOCATED IN PART OF THE NW 1/4 & THE NE 1/4 OF SEC  
21, T 7 N, R 10 E, CITY OF MADISON, DANE COUNTY, WI.

CITY ENGINEERING DIVISION  
PROJECT NO. 53W1837  
REAL ESTATE PROJECT NO. 10608

NOVEMBER 24, 2014 djs  
REV.



SHEET 1 OF 6

ORIGINATOR: M:\DESIGN\Projects\ 53W1837\Survey\Drawings\Relocation Order



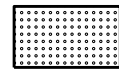
**Madison, Wisconsin**



**FEE**



**PLE**



**TLE**

**EXISTING ROW**

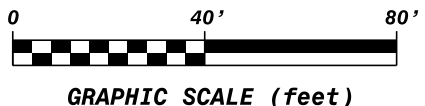
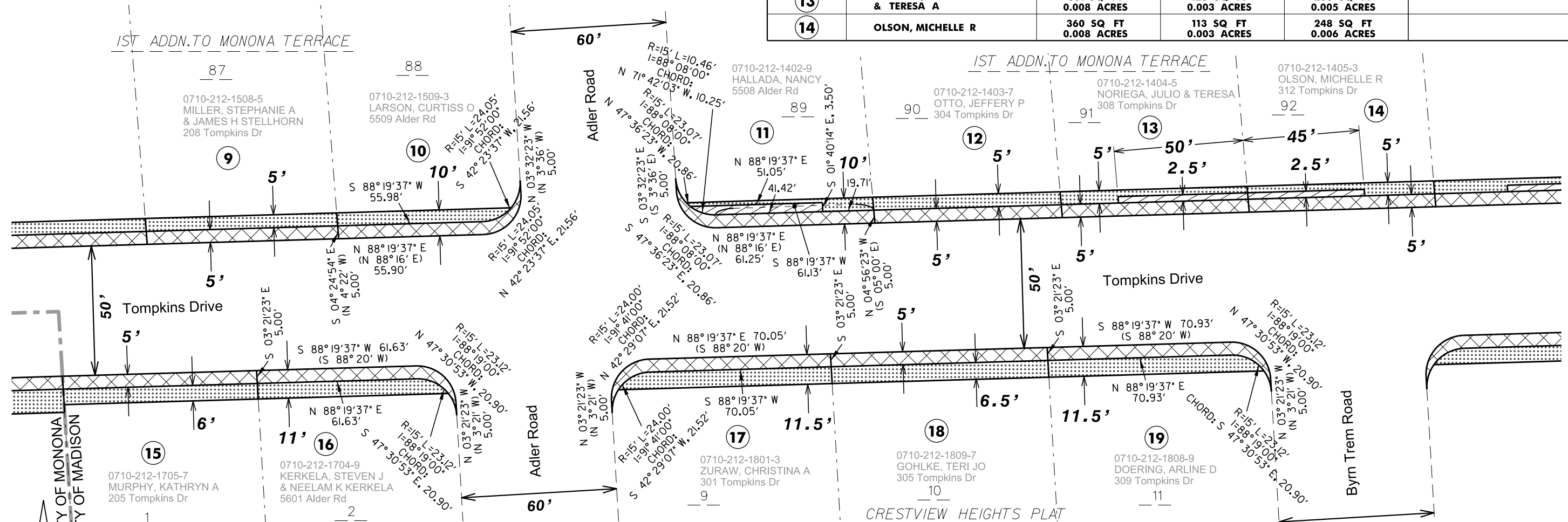
**PROPERTY LINE**

**EXISTING EASEMENT**

RELOCATION ORDER APPROVED BY THE PLAN COMMISSION:		RELOCATION ORDER APPROVED BY THE BOARD OF PUBLIC WORKS:		RELOCATION ORDER APPROVED BY THE COMMON COUNCIL:	
EXECUTIVE SECRETARY	DATE	EXECUTIVE SECRETARY	DATE	CITY CLERK	DATE

**SCHEDULE OF INTERESTS REQUIRED**

PARCEL #	OWNER NAME	FEE AREA REQUIRED	PLE AREA REQUIRED	TLE AREA REQUIRED	CONSENT TO OCCUPY/RELEASE OF RIGHTS
9	MILLER, STEPHANIE A & JAMES H STELLHORN	370 SQ FT 0.008 ACRES		370 SQ FT 0.008 ACRES	
10	LARSON, CURTISS O	357 SQ FT 0.008 ACRES		319 SQ FT 0.007 ACRES	
11	HALLADA, NANCY H	379 SQ FT 0.009 ACRES	168 SQ FT 0.004 ACRES	175 SQ FT 0.004 ACRES	
12	OTTO, JEFFERY P	362 SQ FT 0.008 ACRES		362 SQ FT 0.008 ACRES	
13	NORIEGA, JULIO C & TERESA A	361 SQ FT 0.008 ACRES	125 SQ FT 0.003 ACRES	236 SQ FT 0.005 ACRES	
14	OLSON, MICHELLE R	360 SQ FT 0.008 ACRES	113 SQ FT 0.003 ACRES	248 SQ FT 0.006 ACRES	



GRAPHIC SCALE (feet)

SHEET 2 OF 6

PARCEL #	OWNER NAME	FEE AREA REQUIRED	PLE AREA REQUIRED	TLE AREA REQUIRED	CONSENT TO OCCUPY/RELEASE OF RIGHTS
15	MURPHY, KATHRYN A	375 SQ FT 0.009 ACRES		450 SQ FT 0.010 ACRES	
16	KERKELA, STEVEN J & NEELAM K KERKELA	381 SQ FT 0.009 ACRES		420 SQ FT 0.010 ACRES	
17	ZURAW, CHRISTINA A	428 SQ FT 0.010 ACRES		512 SQ FT 0.012 ACRES	
18	GOHLKE, TERI JO	419 SQ FT 0.010 ACRES		544 SQ FT 0.012 ACRES	
19	DOERING, ARLINE D	428 SQ FT 0.010 ACRES		517 SQ FT 0.012 ACRES	

**CITY OF MADISON RELOCATION ORDER**

"PLAT OF LAND INTERESTS REQUIRED FOR THE CONSTRUCTION AND MAINTENANCE OF IMPROVEMENTS FOR TOMPKINS DRIVE", LOCATED IN PART OF THE NW 1/4 & THE NE 1/4 OF SEC 21, T 7 N, R 10 E, CITY OF MADISON, DANE COUNTY, WI.



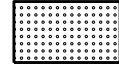

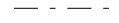
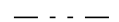
CITY ENGINEERING DIVISION  
PROJECT NO. 53W1837  
REAL ESTATE PROJECT NO. 10608

NOVEMBER 24, 2014 djs  
REV.

PLOT SCALE: \_\_\_\_\_ PLOT NAME: \_\_\_\_\_ REV. DATE: \_\_\_\_\_ ORIGINATOR: \_\_\_\_\_



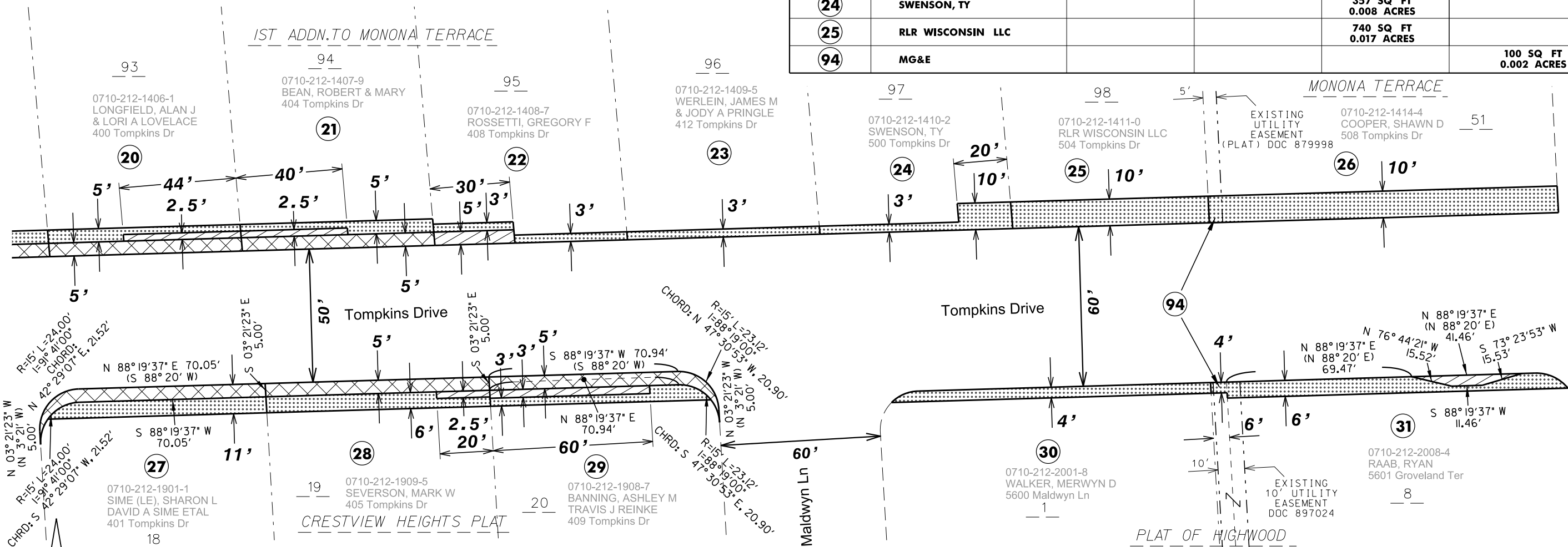
# Madison, Wisconsin

-  **FEE**
-  **PLE**
-  **TLE**
-  **EXISTING ROW**
-  **PROPERTY LINE**
-  **EXISTING EASEMENT**

RELOCATION ORDER APPROVED BY THE PLAN COMMISSION:		RELOCATION ORDER APPROVED BY THE BOARD OF PUBLIC WORKS:		RELOCATION ORDER APPROVED BY THE COMMON COUNCIL:	
EXECUTIVE SECRETARY	DATE	EXECUTIVE SECRETARY	DATE	CITY CLERK	DATE

## SCHEDULE OF INTERESTS REQUIRED

PARCEL #	OWNER NAME	FEE AREA REQUIRED	PLE AREA REQUIRED	TLE AREA REQUIRED	RIGHT OF ENTRY
20	LONGFIELD, ALAN J & LORI A LOVELACE	362 SQ FT 0.008 ACRES	110 SQ FT 0.003 ACRES	251 SQ FT 0.006 ACRES	
21	BEAN, ROBERT A & MARY M	362 SQ FT 0.008 ACRES	100 SQ FT 0.002 ACRES	261 SQ FT 0.006 ACRES	
22	ROSSETTI, GREGORY F		150 SQ FT 0.003 ACRES	217 SQ FT 0.005 ACRES	
23	WERLEIN, JAMES M & JODY A PRINGLE			217 SQ FT 0.005 ACRES	
24	SWENSON, TY			357 SQ FT 0.008 ACRES	
25	RLR WISCONSIN LLC			740 SQ FT 0.017 ACRES	
94	MG&E				100 SQ FT 0.002 ACRES



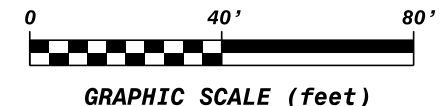
PARCEL #	OWNER NAME	FEE AREA REQUIRED	PLE AREA REQUIRED	TLE AREA REQUIRED	CONSENT TO OCCUPY/ RELEASE OF RIGHTS
26	COOPER, SHAWN D			1,311 SQ FT 0.30 ACRES	
27	SIME, SHARON L DAVID A DANIEL A CHERYL L DUWAYNE A	428 SQ FT 0.010 ACRES		471 SQ FT 0.011 ACRES	
28	SEVERSON, MARK W	420 SQ FT 0.010 ACRES	50 SQ FT 0.001 ACRES	454 SQ FT 0.010 ACRES	
29	BANNING, ASHLEY M TRAVIS J REINKE	428 SQ FT 0.010 ACRES	180 SQ FT 0.004 ACRES	295 SQ FT 0.007 ACRES	
30	WALKER, MERWYN D & SHIRLEY A			467 SQ FT 0.011 ACRES	
31	RAAB, RYAN		106 SQ FT 0.002 ACRES	664 SQ FT 0.015 ACRES	

## CITY OF MADISON RELOCATION ORDER

"PLAT OF LAND INTERESTS REQUIRED FOR THE CONSTRUCTION AND MAINTENANCE OF IMPROVEMENTS FOR TOMPKINS DRIVE", LOCATED IN PART OF THE NW 1/4 & THE NE 1/4 OF SEC 21, T 7 N, R 10 E, CITY OF MADISON, DANE COUNTY, WI.

CITY ENGINEERING DIVISION  
PROJECT NO. 53W1837  
REAL ESTATE PROJECT NO. 10608





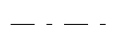

NOVEMBER 24, 2014 djs  
REV.



GRAPHIC SCALE (feet)



**Madison, Wisconsin**

-  **FEE**
-  **PLE**
-  **TLE**
-  **EXISTING ROW**
-  **PROPERTY LINE**
-  **EXISTING EASEMENT**

RELOCATION ORDER APPROVED  
BY THE PLAN COMMISSION:

EXECUTIVE SECRETARY \_\_\_\_\_ DATE \_\_\_\_\_

RELOCATION ORDER APPROVED  
BY THE BOARD OF PUBLIC WORKS:

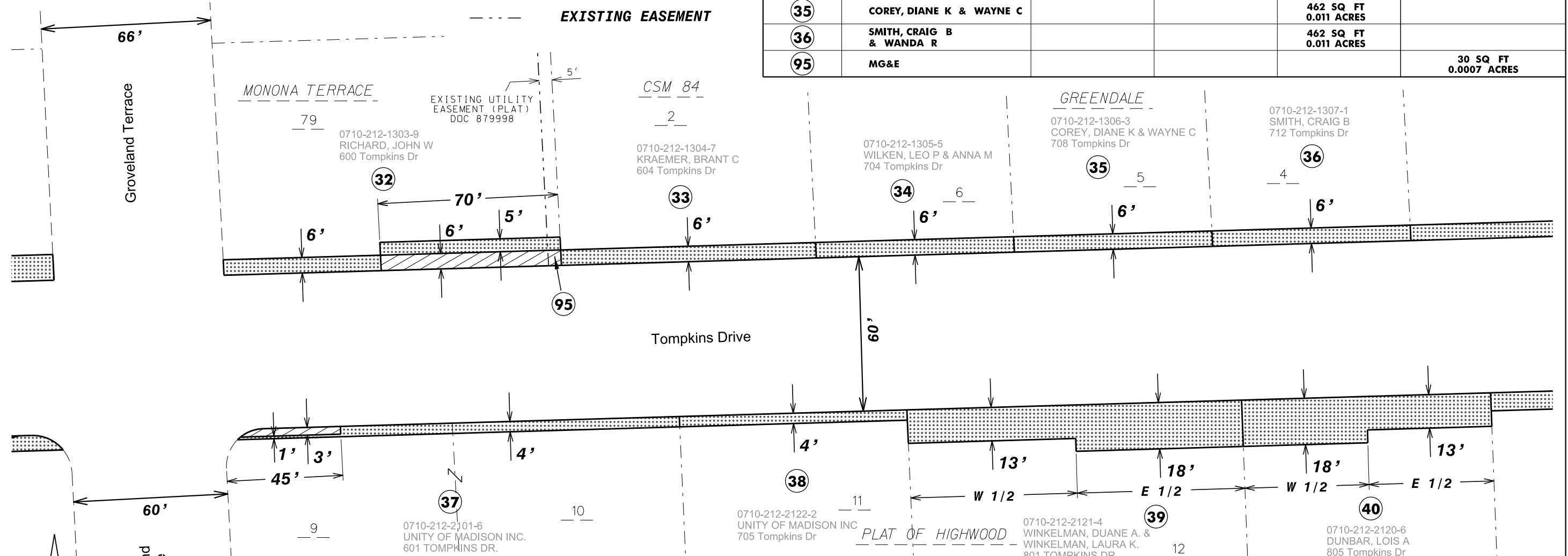
EXECUTIVE SECRETARY \_\_\_\_\_ DATE \_\_\_\_\_

RELOCATION ORDER APPROVED  
BY THE COMMON COUNCIL:

CITY CLERK \_\_\_\_\_ DATE \_\_\_\_\_

**SCHEDULE OF INTERESTS REQUIRED**

PARCEL #	OWNER NAME	FEE AREA REQUIRED	PLE AREA REQUIRED	TLE AREA REQUIRED	CONSENT TO OCCUPY
32	RICHARD, JOHN W		420 SQ FT 0.010 ACRES	717 SQ FT 0.016 ACRES	
33	KRAEMER, BRANT C			594 SQ FT 0.014 ACRES	
34	WILKEN, LEO P & ANNA M			462 SQ FT 0.011 ACRES	
35	COREY, DIANE K & WAYNE C			462 SQ FT 0.011 ACRES	
36	SMITH, CRAIG B & WANDA R			462 SQ FT 0.011 ACRES	
95	MG&E				30 SQ FT 0.0007 ACRES



**SCHEDULE OF INTERESTS REQUIRED**

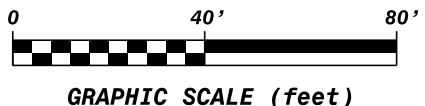
PARCEL #	OWNER NAME	FEE AREA REQUIRED	PLE AREA REQUIRED	TLE AREA REQUIRED	CONSENT TO OCCUPY
37	UNITY OF MADISON INC.		108 SQ FT 0.002 ACRES	566 SQ FT 0.013 ACRES	
38	UNITY OF MADISON INC.			354 SQ FT 0.008 ACRES	
39	WINKELMAN, DUANE A. & WINKELMAN, LAURA K.			2,015 SQ FT 0.046 ACRES	
40	DUNBAR, LOIS A			1,500 SQ FT 0.034 ACRES	
95	CHARTER COMMUNICATIONS				30 SQ FT 0.0007 ACRES
95	AT&T				30 SQ FT 0.0007 ACRES

**CITY OF MADISON  
RELOCATION ORDER**

"PLAT OF LAND INTERESTS REQUIRED FOR THE CONSTRUCTION AND MAINTENANCE OF IMPROVEMENTS FOR TOMPKINS DRIVE", LOCATED IN PART OF THE NW 1/4 & THE NE 1/4 OF SEC 21, T 7 N, R 10 E, CITY OF MADISON, DANE COUNTY, WI.

CITY ENGINEERING DIVISION  
PROJECT NO. 53W1837  
REAL ESTATE PROJECT NO. 10608

NOVEMBER 24, 2014 djs  
REV.



SHEET 4 OF 6



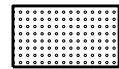
**Madison, Wisconsin**



**FEE**



**PLE**



**TLE**

**EXISTING ROW**

**PROPERTY LINE**

**EXISTING EASEMENT**

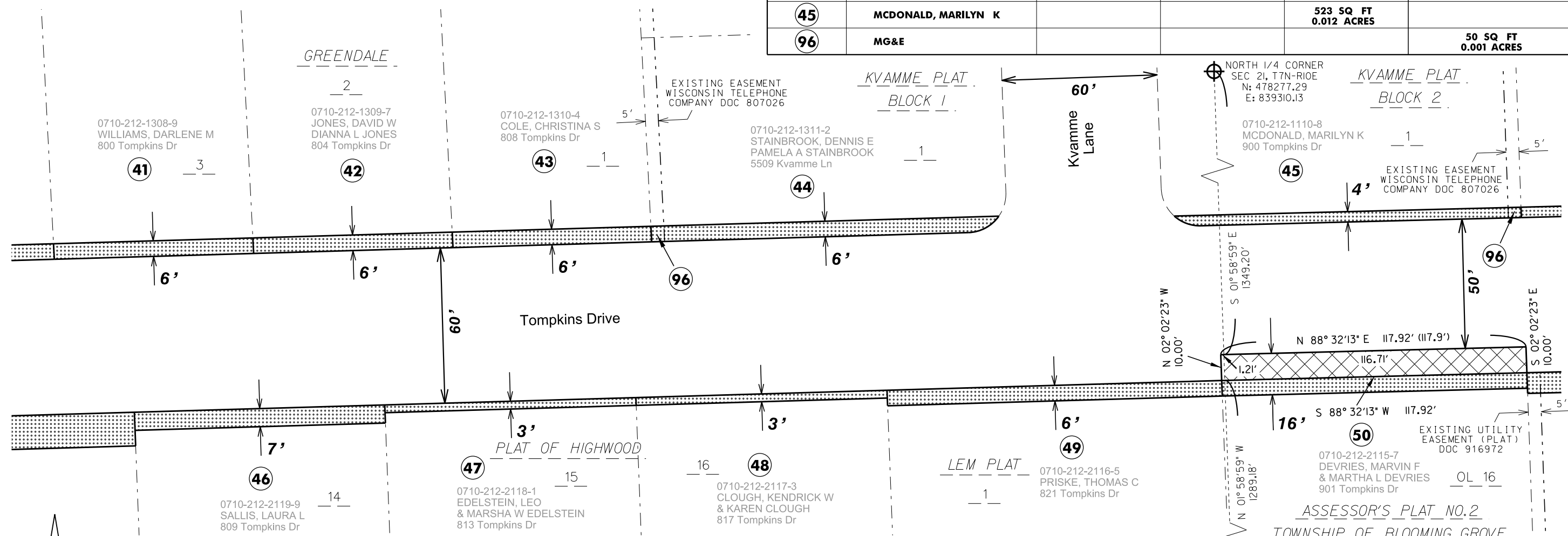
RELOCATION ORDER APPROVED BY THE PLAN COMMISSION:	
EXECUTIVE SECRETARY	DATE

RELOCATION ORDER APPROVED BY THE BOARD OF PUBLIC WORKS:	
EXECUTIVE SECRETARY	DATE

RELOCATION ORDER APPROVED BY THE COMMON COUNCIL:	
CITY CLERK	DATE

**SCHEDULE OF INTERESTS REQUIRED**

PARCEL #	OWNER NAME	FEE AREA REQUIRED	PLE AREA REQUIRED	TLE AREA REQUIRED	RIGHT OF ENTRY
41	WILLIAMS, DARLENE M NKA NOGGLE, DARLENE M			462 SQ FT 0.011 ACRES	
42	JONES, DAVID W DIANNA L JONES			462 SQ FT 0.011 ACRES	
43	COLE, CHRISTINA S NKA REUTER, CHRISTINA			461 SQ FT 0.011 ACRES	
44	STAINBROOK, DENNIS E PAMELA A STAINBROOK			785 SQ FT 0.018 ACRES	
45	MCDONALD, MARILYN K			523 SQ FT 0.012 ACRES	
96	MG&E				50 SQ FT 0.001 ACRES



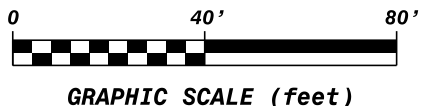
PARCEL #	OWNER NAME	FEE AREA REQUIRED	PLE AREA REQUIRED	TLE AREA REQUIRED	RIGHT OF ENTRY
46	SALLIS, LAURA L			677 SQ FT 0.016 ACRES	
47	EDELSTEIN, LEO & MARSHA W EDELSTEIN			291 SQ FT 0.007 ACRES	
48	CLOUGH, KENDRICK W & KAREN CLOUGH			291 SQ FT 0.007 ACRES	
49	PRISKE, THOMAS C & JUDITH K PRISKE			776 SQ FT 0.018 ACRES	
50	DEVRIES, MARVIN F & MARTHA L DEVRIES	1,179 SQ FT 0.027 ACRES		707 SQ FT 0.016 ACRES	
96	WISCONSIN TELEPHONE CO				50 SQ FT 0.001 ACRES

**CITY OF MADISON  
RELOCATION ORDER**

"PLAT OF LAND INTERESTS REQUIRED FOR THE CONSTRUCTION AND MAINTENANCE OF IMPROVEMENTS FOR TOMPKINS DRIVE", LOCATED IN PART OF THE NW 1/4 & THE NE 1/4 OF SEC 21, T 7 N, R 10 E, CITY OF MADISON, DANE COUNTY, WI.

CITY ENGINEERING DIVISION  
PROJECT NO. 53W1837  
REAL ESTATE PROJECT NO. 10608

NOVEMBER 24, 2014 djs  
REV.



SHEET 5 OF 6



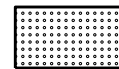
**Madison, Wisconsin**



**FEE**



**PLE**



**TLE**

--- **EXISTING ROW**

--- **PROPERTY LINE**

--- **EXISTING EASEMENT**

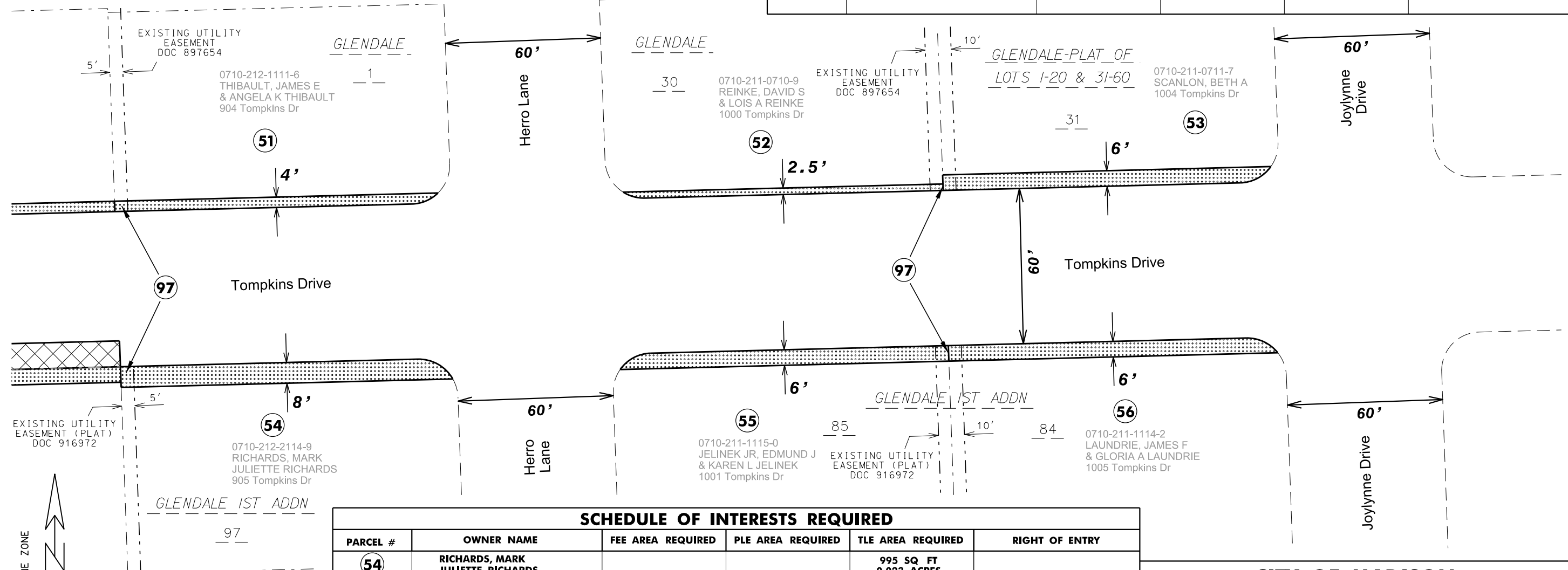
RELOCATION ORDER APPROVED BY THE PLAN COMMISSION:	
EXECUTIVE SECRETARY	DATE

RELOCATION ORDER APPROVED BY THE BOARD OF PUBLIC WORKS:	
EXECUTIVE SECRETARY	DATE

RELOCATION ORDER APPROVED BY THE COMMON COUNCIL:	
CITY CLERK	DATE

**SCHEDULE OF INTERESTS REQUIRED**

PARCEL #	OWNER NAME	FEE AREA REQUIRED	PLE AREA REQUIRED	TLE AREA REQUIRED	CONSENT TO OCCUPY/RELEASE OF RIGHTS
51	THIBAUT, JAMES E & ANGELA K THIBAUT			487 SQ FT 0.011 ACRES	
52	REINKE, DAVID S & LOIS A REINKE			302 SQ FT 0.007 ACRES	
53	SCANLON, BETH A			739 SQ FT 0.017 ACRES	



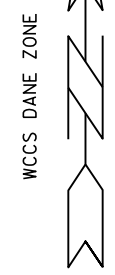
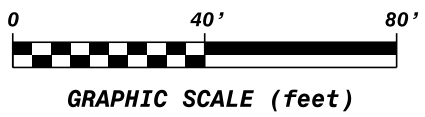
SCHEDULE OF INTERESTS REQUIRED					
PARCEL #	OWNER NAME	FEE AREA REQUIRED	PLE AREA REQUIRED	TLE AREA REQUIRED	RIGHT OF ENTRY
54	RICHARDS, MARK JULIETTE RICHARDS			995 SQ FT 0.023 ACRES	
55	JELINEK JR, EDMUND J & KAREN L JELINEK			740 SQ FT 0.017 ACRES	
56	LAUNDRIE, JAMES F & GLORIA A LAUNDRIE			740 SQ FT 0.017 ACRES	
97	MG&E				163 SQ FT 0.004 ACRES

**CITY OF MADISON  
RELOCATION ORDER**

"PLAT OF LAND INTERESTS REQUIRED FOR THE CONSTRUCTION AND MAINTENANCE OF IMPROVEMENTS FOR TOMPKINS DRIVE", LOCATED IN PART OF THE NW 1/4 & THE NE 1/4 OF SEC 21, T 7 N, R 10 E, CITY OF MADISON, DANE COUNTY, WI.

CITY ENGINEERING DIVISION  
PROJECT NO. 53W1837  
REAL ESTATE PROJECT NO. 10608

NOVEMBER 24, 2014 djs  
REV.



PLOT SCALE: \_\_\_\_\_ PLOT NAME: \_\_\_\_\_ REV. DATE: \_\_\_\_\_ ORIGINATOR: \_\_\_\_\_