

UNIVERSITY 3000 LLC

3575 University Ave, Madison, WI



LAND USE AND URBAN DESIGN COMMISSION SUBMITTAL

MAY 19, 2025



JLA
ARCHITECTS

JLA PROJECT NUMBER: W23-0222



1 NORTH ELEVATION - OVERALL
1/16" = 1'-0"



2 SOUTH ELEVATION - OVERALL
1/16" = 1'-0"



3 EAST ELEVATION - OVERALL
1/16" = 1'-0"



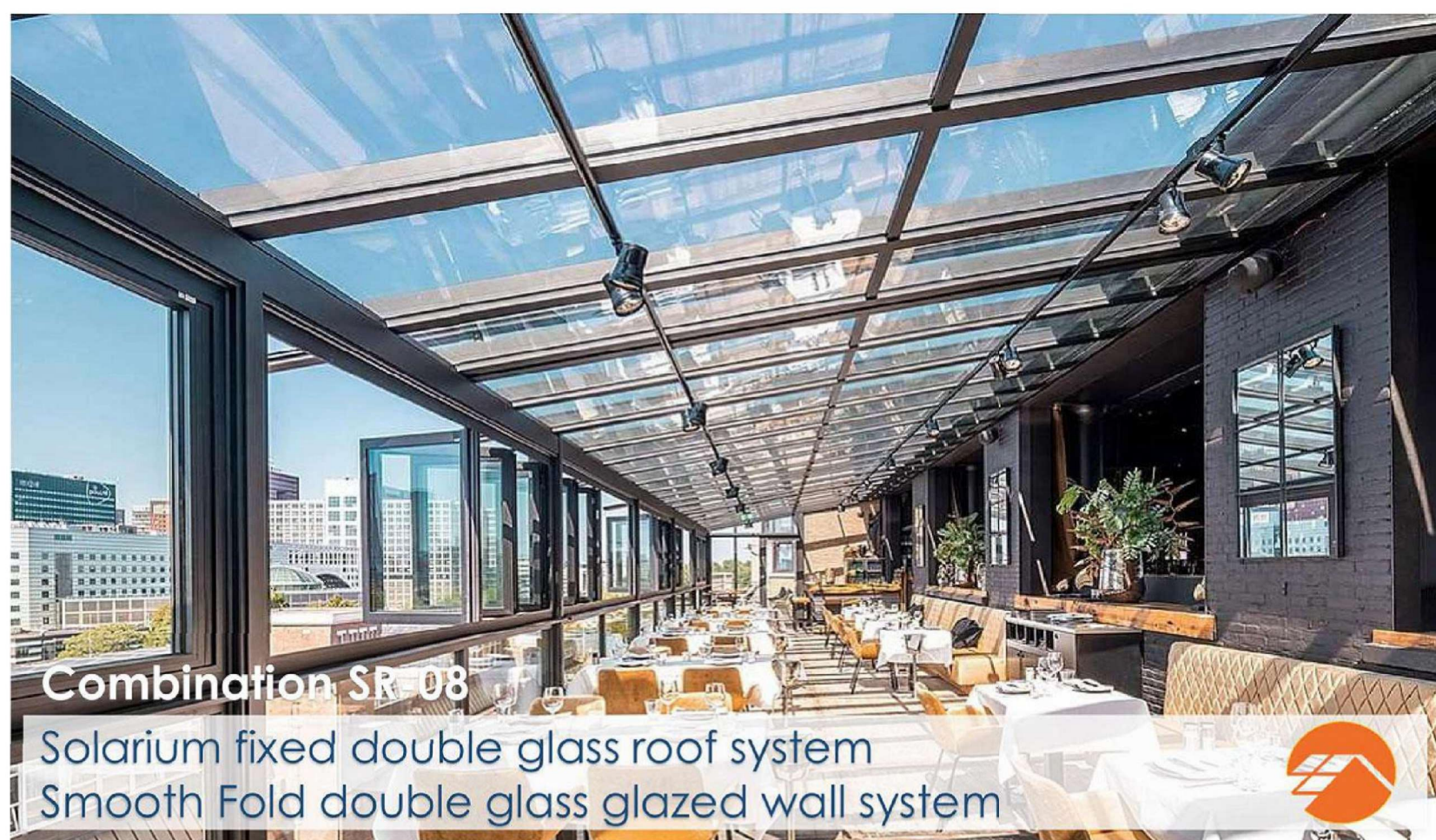
4 WEST ELEVATION - OVERALL
1/16" = 1'-0"



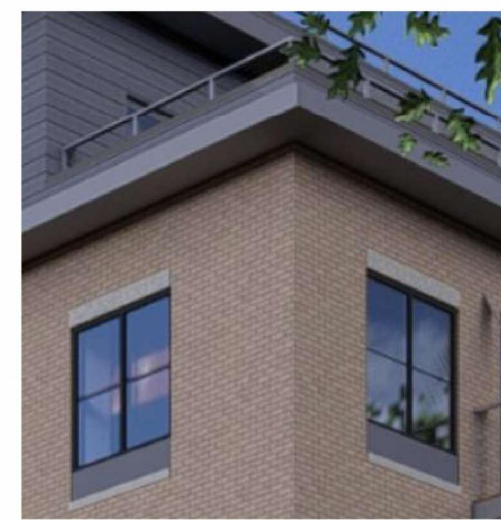
12 OVERHEAD GARAGE DOORS



13 ACCENT CANOPY / ROOF



22 SOLARIUM



15 EXTRUDED ALUMINUM EYEBROW



9 STOREFRONT WINDOW



WATERTABLE



16 RAILING PROFILE



18 CAST STONE CORNICE PROFILE

EXTERIOR MATERIALS	
MARK	DESCRIPTION
1	COMPOSITE HORIZONTAL SIDING
2	COMPOSITE ACCENT VERTICAL SIDING
3	COMPOSITE ACCENT PANEL SIDING
4	MASONRY - MANUFACTURED STONE
5	PRECAST STONE UNIT
6	MASONRY - THIN SET BRICK
7	PRECAST STONE
8	ALUMINUM ENTRANCE DOOR
9	ALUMINUM STOREFRONT WINDOW
10	VINYL WINDOWS
11	VINYL PATIO DOORS
12	OVERHEAD GARAGE DOOR
13	ACCENT CANOPY / ROOF
14	BALCONY DECK
15	STEEL ENTRY DOOR
16	BALCONY RAILING
17	PRECAST CONCRETE SILL
18	CAST STONE BAND
19	EXTRUDED ALUMINUM EYEBROW
20	ALUMINUM FACIA
21	FLUSH PANEL SOFFIT
22	SOLARIUM

1 HARDIE CEDARMILL
NIGHT GREY

2 HARDIE WOODTONE RUSTIC SERIES
OLD CHERRY

3 HARDIE METAL
TRIM NIGHT GREY

4 ELDORADO LIGHT ASHLAR SANDSTONE

5 WESTBROOK DARK BUFF PRECAST STONE

6 ACME CHINO THIN BRICK



JLA
ARCHITECTS
MADISON | MILWAUKEE | DENVER
JLA-AP.COM

JLA PROJECT NUMBER: W23-0222

UNIVERSITY 3000 LLC

LAND USE AND URBAN DESIGN
COMMISSION SUBMITTAL

PROGRESS DOCUMENTS

These documents reflect progress and intent and may be subject to change, including additional detail. These are not final construction documents and should not be used for final bidding or construction-related purposes.

The seal & signature by the Architect of Record for this sheet is affixed to Sheet C001, which identifies this sheet as part of the sealed & signed document set in the set's index list.

DATE OF ISSUANCE MAY 19, 2025

REVISION SCHEDULE

Mark	Description	Date
------	-------------	------

SHEET TITLE

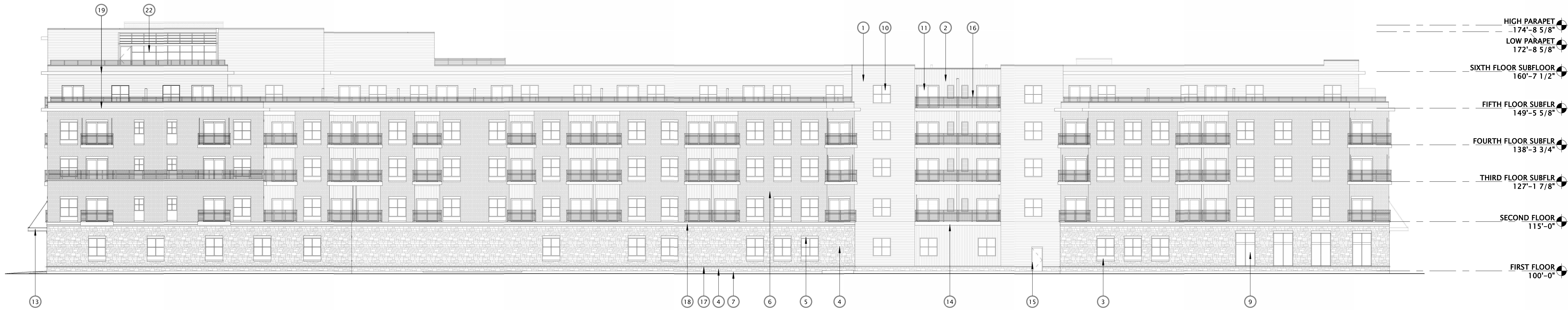
EXTERIOR
ELEVATIONS &
MATERIALS

SHEET NUMBER

A200



1 NORTH ELEVATION - OVERALL (B&W)
1/16" = 1'-0"



2 SOUTH ELEVATION - OVERALL (B&W)
1/16" = 1'-0"



3 EAST ELEVATION - OVERALL (B&W)
1/16" = 1'-0"



4 WEST ELEVATION - OVERALL (B&W)
1/16" = 1'-0"

EXTERIOR MATERIALS	
MARK	DESCRIPTION
1	COMPOSITE HORIZONTAL SIDING
2	COMPOSITE ACCENT VERTICAL SIDING
3	COMPOSITE ACCENT PANEL SIDING
4	MASONRY - MANUFACTURED STONE
5	PRECAST STONE UNIT
6	MASONRY - THIN SET BRICK
7	PRECAST STONE
8	ALUMINUM ENTRANCE DOOR
9	ALUMINUM STOREFRONT WINDOW
10	VINYL WINDOWS
11	VINYL PATIO DOORS
12	OVERHEAD GARAGE DOOR
13	ACCENT CANOPY / ROOF
14	BALCONY / DECK
15	STEEL ENTRY DOOR
16	BALCONY RAILING
17	PRECAST CONCRETE SILL
18	CAST STONE BAND
19	EXTRUDED ALUMINUM EYEBROW
20	ALUMINUM FACIA
21	FLUSH PANEL SOFFIT
22	SOLARIUM



JLA
ARCHITECTS
MADISON | MILWAUKEE | DENVER
JLA-AP.COM

JLA PROJECT NUMBER: W23-0222

UNIVERSITY 3000 LLC

LAND USE AND URBAN DESIGN
COMMISSION SUBMITTAL

PROGRESS DOCUMENTS

These documents reflect progress and intent and may be subject to change, including additional detail. These are not final construction documents and should not be used for final bidding or construction-related purposes.

The seal & signature by the Architect of Record for this sheet is affixed to Sheet C001, which identifies this sheet as part of the sealed & signed document set in the set's index list.

DATE OF ISSUANCE MAY 19, 2025

REVISION SCHEDULE		
Mark	Description	Date

SHEET TITLE

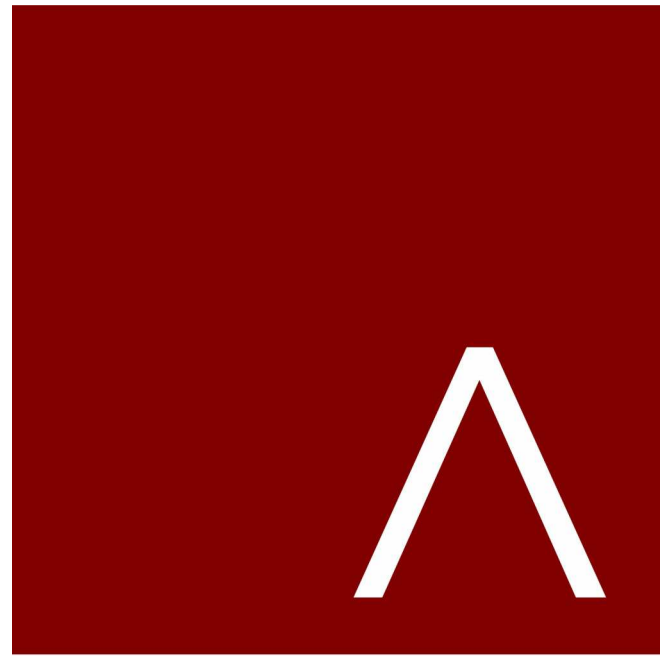
EXTERIOR
ELEVATIONS - BLACK
& WHITE

SHEET NUMBER

A201



PERSPECTIVE EAST



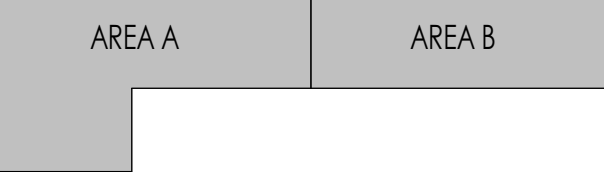
JLA
ARCHITECTS

MADISON | MILWAUKEE | DENVER
JLA-AP.COM

JLA PROJECT NUMBER: W23-0222

UNIVERSITY 3000 LLC

LAND USE AND URBAN DESIGN
COMMISSION SUBMITTAL



KEY PLAN
PROGRESS DOCUMENTS

These documents reflect progress and intent and may be subject to change, including additional detail. These are not final construction documents and should not be used for final bidding or construction-related purposes.

The seal & signature by the Architect of Record for this sheet is affixed to Sheet C001, which identifies this sheet as part of the sealed & signed document set in the set's index list.

DATE OF ISSUANCE MAY 19, 2025

REVISION SCHEDULE		
Mark	Description	Date

SHEET TITLE

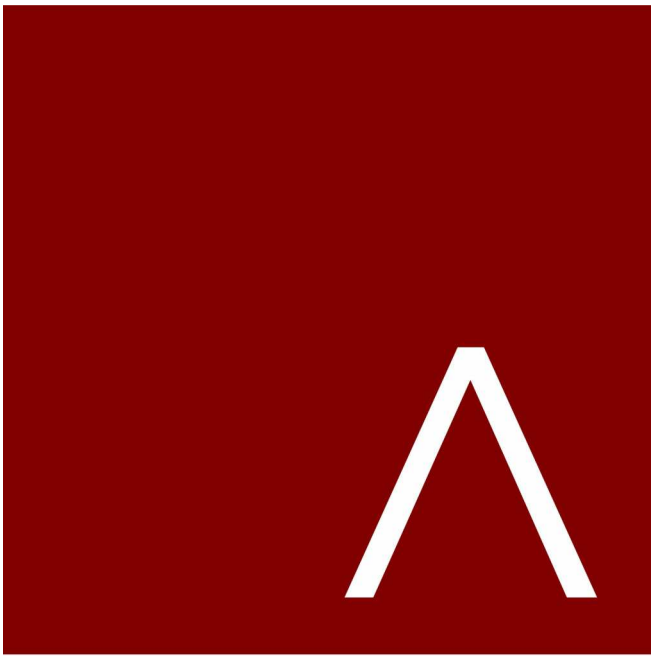
EXTERIOR
RENDERINGS

SHEET NUMBER

A202



PERSPECTIVE EAST - DUSK



JLA
ARCHITECTS
MADISON | MILWAUKEE | DENVER
JLA-AP.COM

JLA PROJECT NUMBER: W23-0222

UNIVERSITY 3000 LLC

LAND USE AND URBAN DESIGN
COMMISSION SUBMITTAL



KEY PLAN

PROGRESS DOCUMENTS

These documents reflect progress and intent and may be subject to change, including additional detail. These are not final construction documents and should not be used for final bidding or construction-related purposes.

The seal & signature by the Architect of Record for this sheet is affixed to Sheet C001, which identifies this sheet as part of the sealed & signed document set in the set's index list.

DATE OF ISSUANCE MAY 19, 2025

REVISION SCHEDULE		
Mark	Description	Date

SHEET TITLE

EXTERIOR
RENDERINGS

SHEET NUMBER

A203



PERSPECTIVE WEST

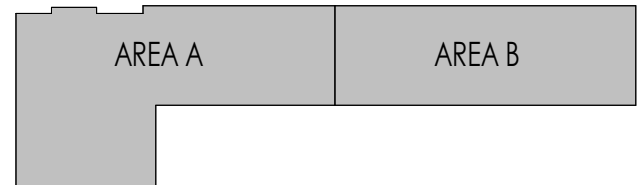


JLA
ARCHITECTS
MADISON | MILWAUKEE | DENVER
JLA-AP.COM

JLA PROJECT NUMBER: W23-0222

UNIVERSITY 3000 LLC

LAND USE AND URBAN DESIGN
COMMISSION SUBMITTAL



KEY PLAN
PROGRESS DOCUMENTS

These documents reflect progress and intent and may be subject to change, including additional detail. These are not final construction documents and should not be used for final bidding or construction-related purposes.
The seal & signature by the Architect of Record for this sheet is affixed to Sheet C001, which identifies this sheet as part of the sealed & signed document set in the set's index list.

DATE OF ISSUANCE MAY 19, 2025

REVISION SCHEDULE		
Mark	Description	Date

SHEET TITLE
**EXTERIOR
RENDERINGS**

SHEET NUMBER
A204



PERSPECTIVE WEST - DUSK

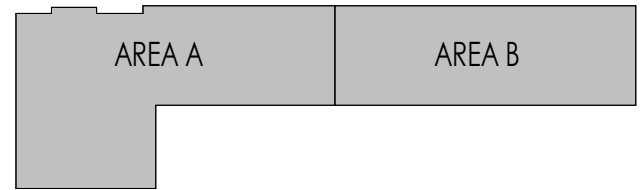


JLA
ARCHITECTS
MADISON | MILWAUKEE | DENVER
JLA-AP.COM

JLA PROJECT NUMBER: W23-0222

UNIVERSITY 3000 LLC

LAND USE AND URBAN DESIGN
COMMISSION SUBMITTAL



KEY PLAN

PROGRESS DOCUMENTS

These documents reflect progress and intent and may be subject to change, including additional detail. These are not final construction documents and should not be used for final bidding or construction-related purposes.

The seal & signature by the Architect of Record for this sheet is affixed to Sheet C001, which identifies this sheet as part of the sealed & signed document set in the set's index list.

DATE OF ISSUANCE		MAY 19, 2025
REVISION SCHEDULE		
Mark	Description	Date

SHEET TITLE

EXTERIOR
RENDERINGS

SHEET NUMBER

A205



PERSPECTIVE NORTH

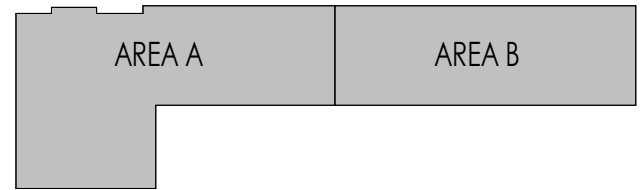


JLA
ARCHITECTS
MADISON | MILWAUKEE | DENVER
JLA-AP.COM

JLA PROJECT NUMBER: W23-0222

UNIVERSITY 3000 LLC

LAND USE AND URBAN DESIGN
COMMISSION SUBMITTAL



KEY PLAN

PROGRESS DOCUMENTS

These documents reflect progress and intent and may be subject to change, including additional detail. These are not final construction documents and should not be used for final bidding or construction-related purposes.

The seal & signature by the Architect of Record for this sheet is affixed to Sheet C001, which identifies this sheet as part of the sealed & signed document set in the set's index list.

DATE OF ISSUANCE MAY 19, 2025

REVISION SCHEDULE		
Mark	Description	Date

SHEET TITLE

EXTERIOR
RENDERINGS

SHEET NUMBER

A206