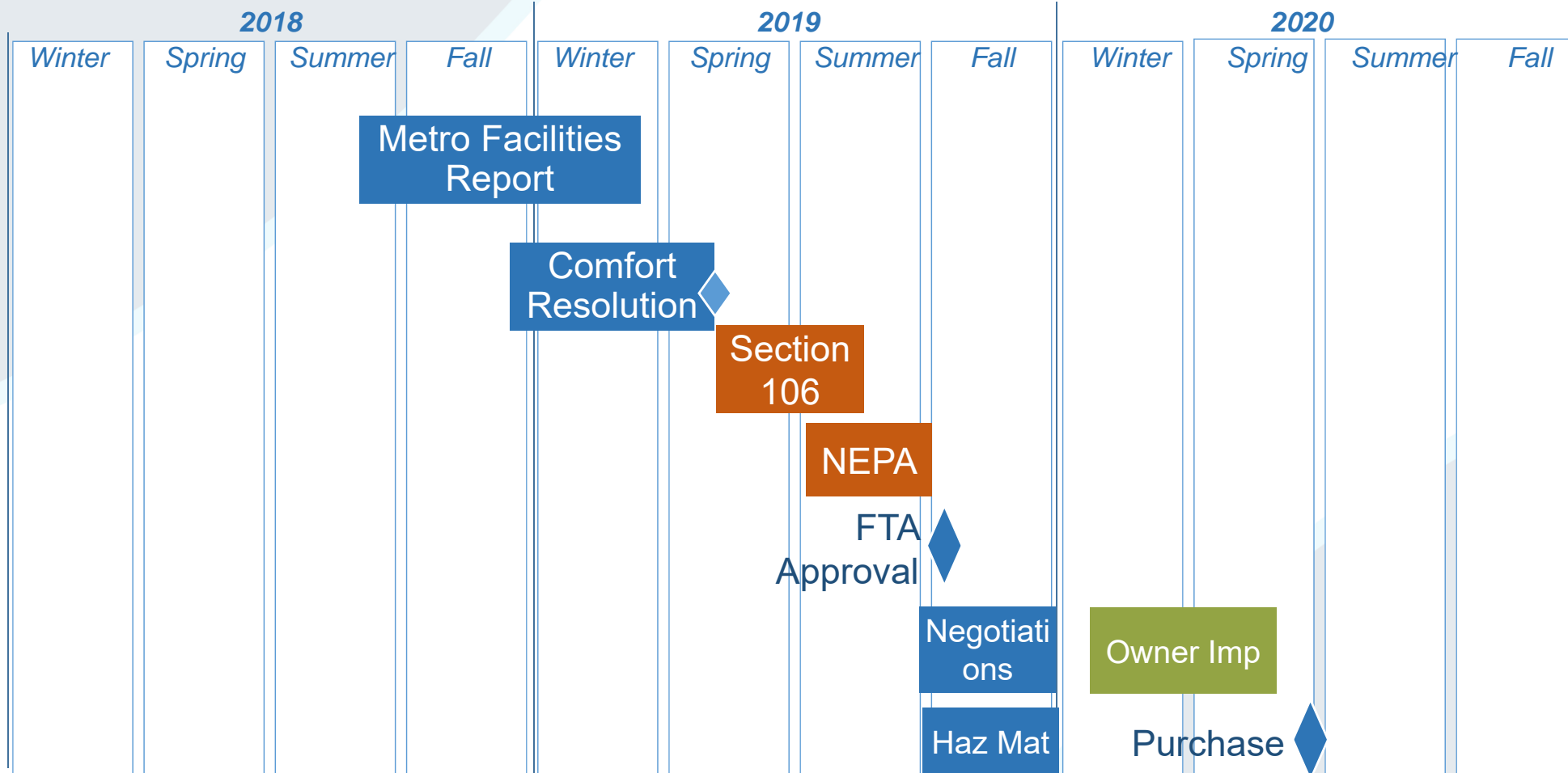


Oscar Mayer Acquisition

August 5, 2019

Process



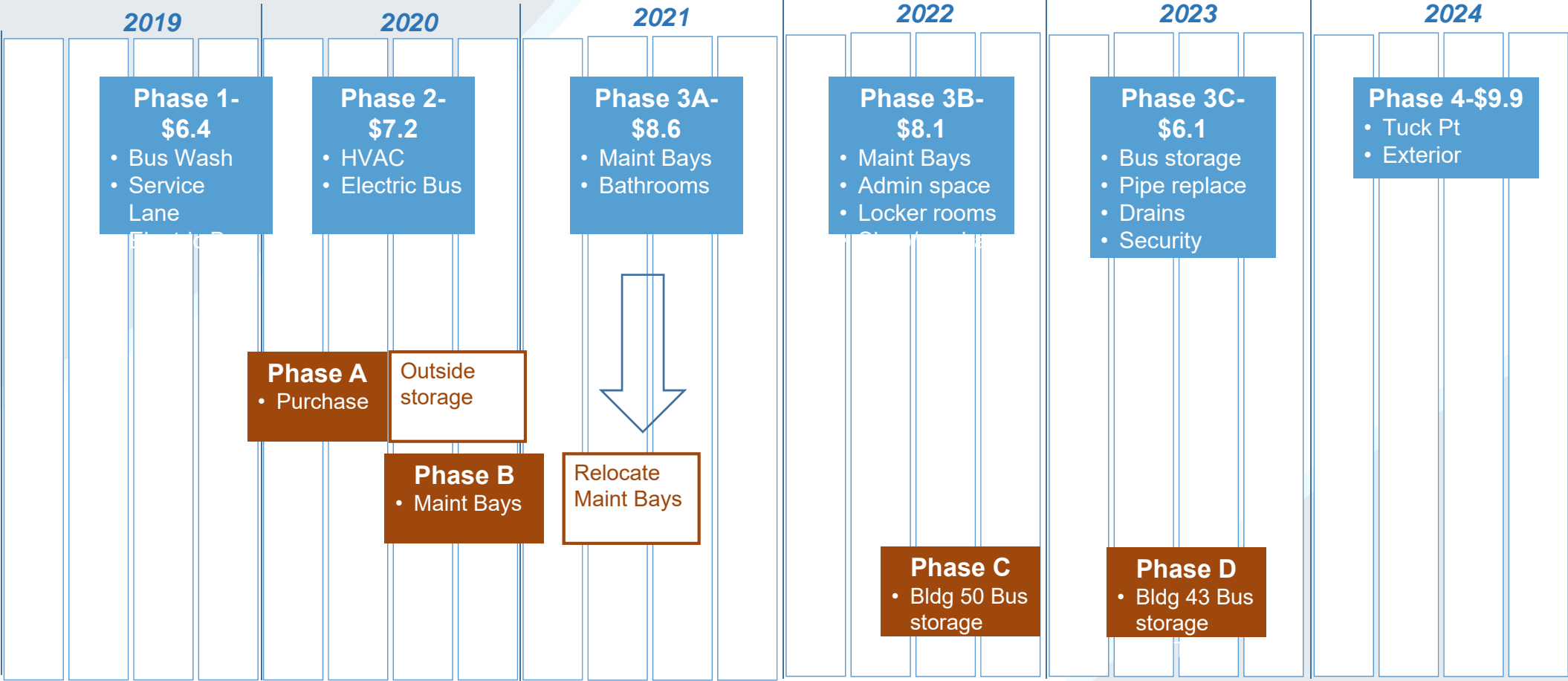
Oscar Mayer

MADISON DEPARTMENT



OF TRANSPORTATION

Possible Staging – 1101 East Washington and Oscar Mayer Acquisition



Currently Completing Section 106

- Oscar Mayer appears to be eligible for the NRHP based on Criterion A

5.1 Criterion A: Event

To be eligible for the National Register under *Criterion A*, a property must be significantly associated with a specific event, pattern of events, or trend important to history. The Oscar Mayer plant was a fixture of Madison for nearly 100 years before closing in 2017, and was long associated with the city's industrial history and east side development. In 1920, just one year after operations began, the Madison plant was the fifth largest meat packing plant in the country and one of the city's largest employers. Originally located beyond the outskirts of the city, the plant not only grew in size itself, but also spurred development in the surrounding area, including entirely new neighborhoods such as Eken Park that were largely populated by plant workers. By the 1950s, about one-third of Madison's industrial workforce was employed by Oscar Mayer and the company's headquarters was moved from Chicago to Madison with an office tower addition to the plant.

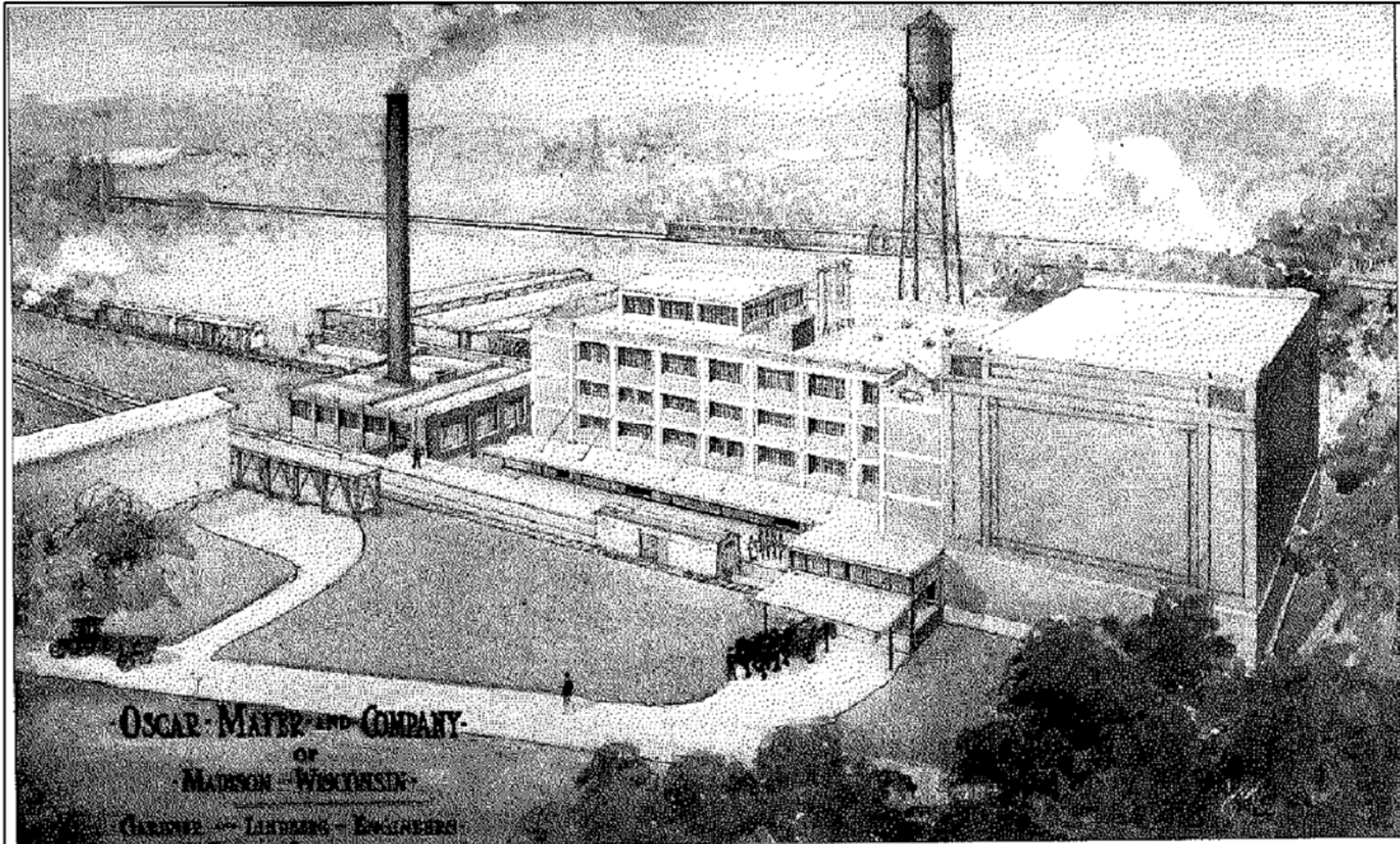


Figure 2. Artist's Rendering of Oscar Mayer Plant in 1919

Source: *Madison: A History of the Formative Years*

MADISON DEPARTMENT



OF TRANSPORTATION

**Determination of Eligibility
Oscar Mayer and Company Plant
City of Madison, Dane County, Wisconsin**

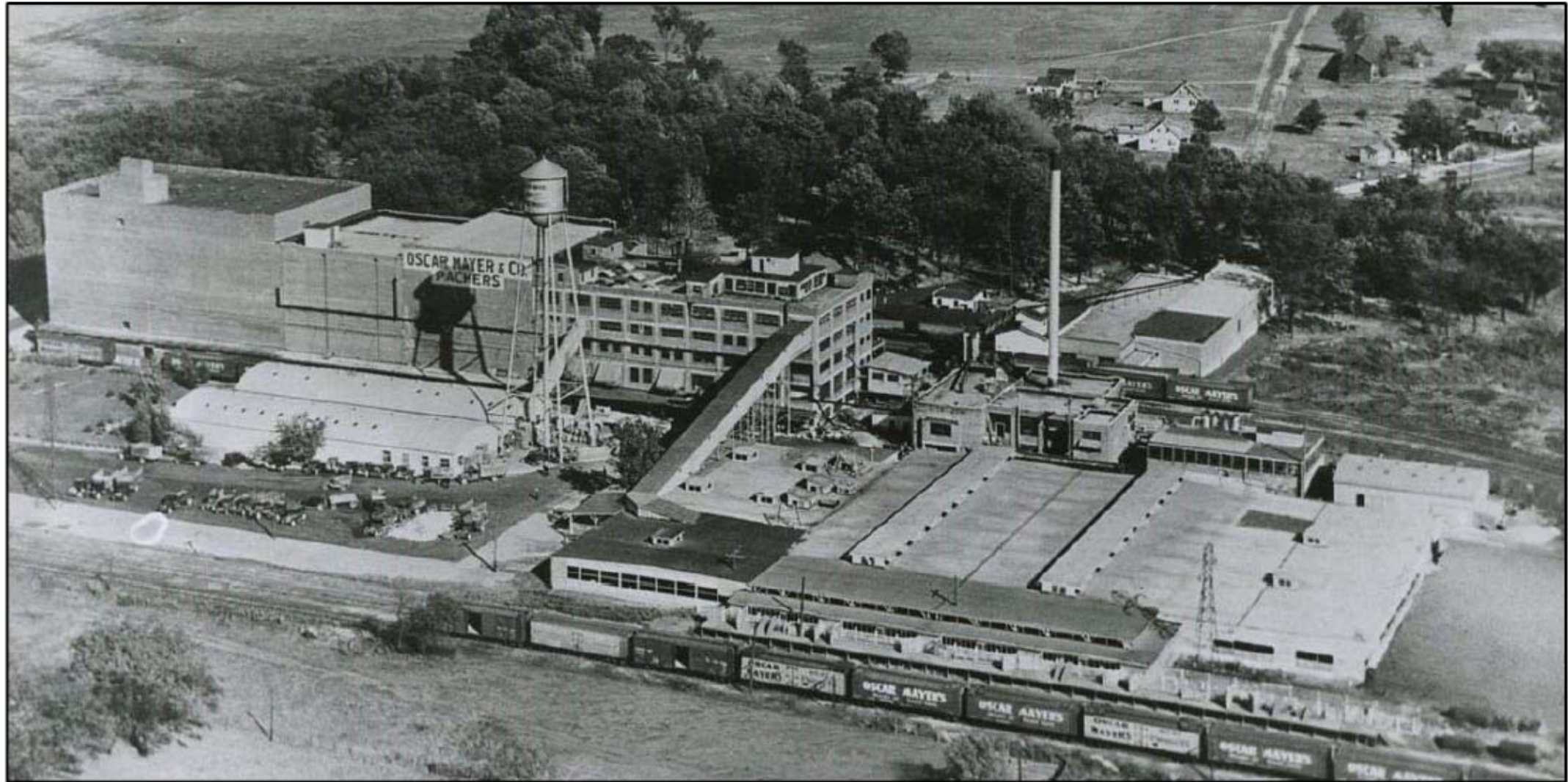
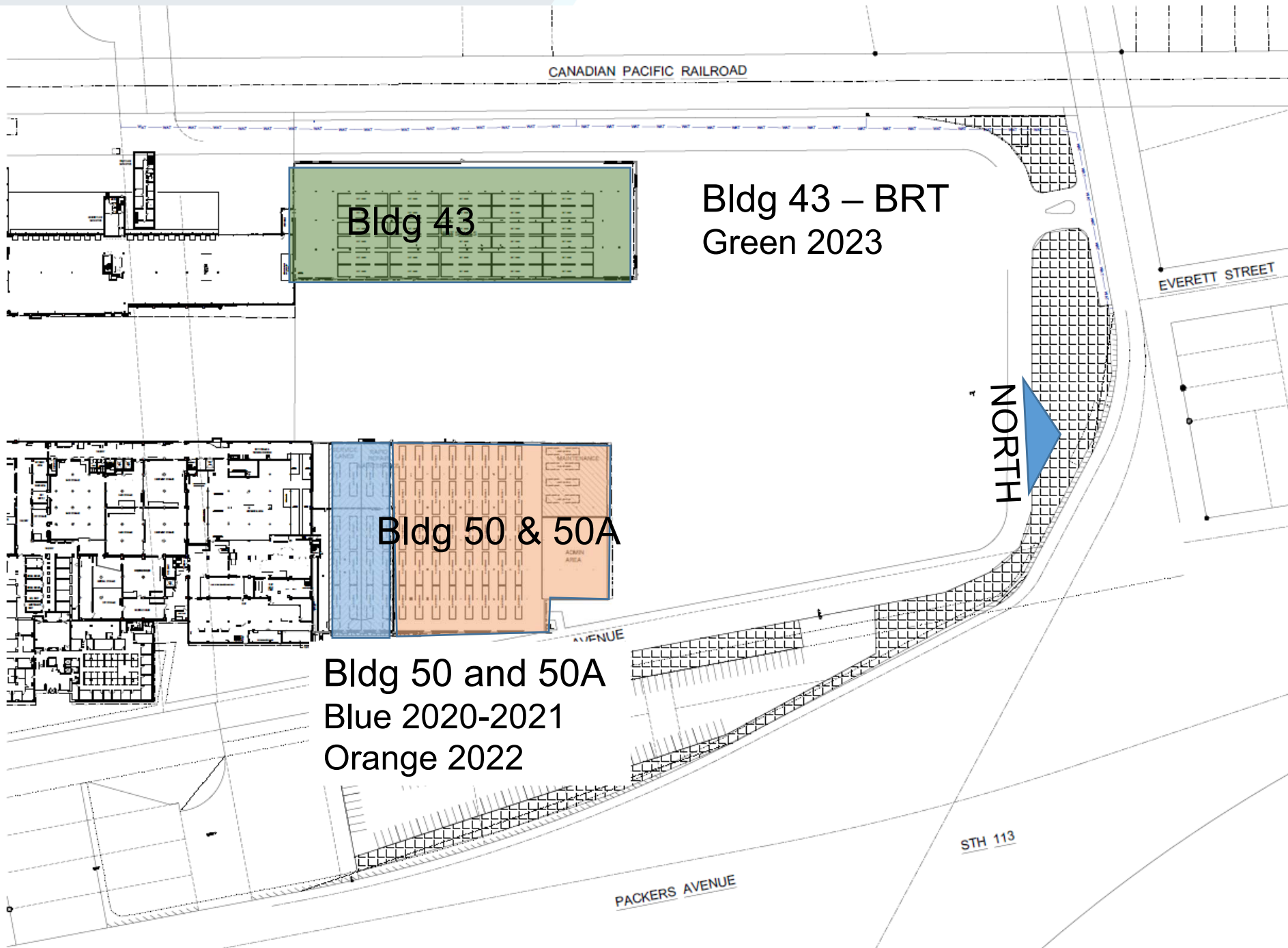


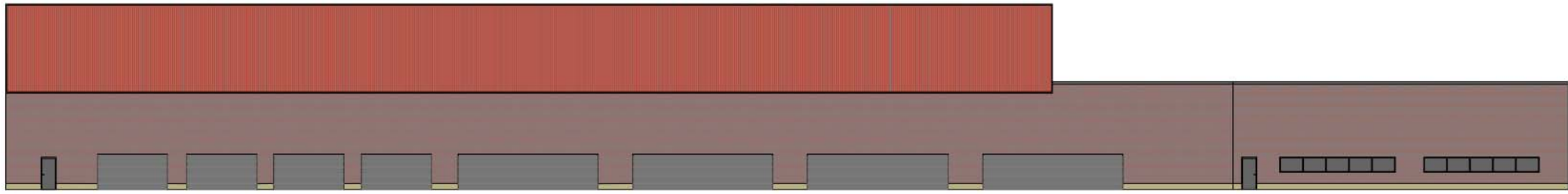
Figure 3. Historic Photograph of Oscar Mayer Plant in 1931, View East
Source: *Wisconsin State Journal*

**Determination of Eligibility
Oscar Mayer and Company Plant
City of Madison, Dane County, Wisconsin**



Figure 5. Historic Photograph of Oscar Mayer Plant in 1954, View North
Source: *Wisconsin State Journal*

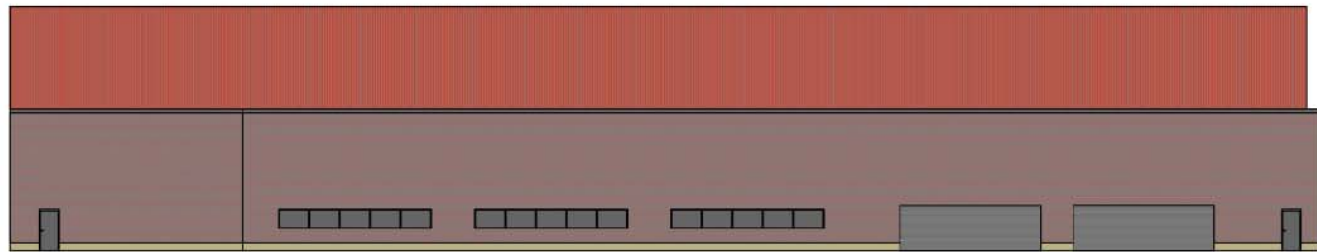




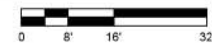
1 EAST ELEVATION



Building 50



2 NORTH ELEVATION



MADISON DEPARTMENT



OF TRANSPORTATION

