



Healthy Retail Access Program Application City of Madison



APPLICANT INFORMATION

Primary Contact Name:

Total Project Amount:

Healthy Retail Funds requested:

Agency/Organization/Group Name (Legal Entity Name) and Address:

Telephone #: _____ Email: _____

Applying as a:

Retailer

Non-Retail Organization

Are you a SNAP-approved retailer through the US Department of Agriculture (USDA)?

Yes USDA FNS #: _____

No - if no, do you plan on becoming a SNAP-approved retailer?

PROJECT INFORMATION

You may attach additional information at the end of this application. Photographs, price estimates, testimonials, and other secondary sources are **highly** recommended.

1. Please describe, in detail, the proposed project (500 word maximum):

2. What are the top three objectives of this project? Please refer to the HRAP program goals below: (500 words maximum)

- Increasing healthy food access to low-income individuals and families
- Supporting food enterprise development and entrepreneurship
- Increasing healthy food choice and improving health outcomes
- Increasing culturally appropriate foods in identified Areas of Focus

Examples:

- 1. Become a certified SNAP-approved retailer within 6 months of receiving funding*
- 2. Increase fresh food inventory by 25% within the first year*

3. **LETTERS OF INTENT AND SUPPORT ARE STRONGLY RECOMMENDED – PLEASE ATTACH**

- **Letters of Intent** provide commitment from a partner showcasing their intent to provide services towards project goals
- **Letters of Support** conveys enthusiasm for the project from community stakeholders.

BUDGET SUMMARY

Please include a project budget that includes:

- Construction costs
- Materials costs
- Labor costs
- Descriptions for how City dollars would be utilized
- Itemized list of any in-kind donations from other funders, lenders, or supporters that are contributing to the project.
- Attach: Price estimates for all City funding requests

Item	Description	Total Cost	Amount of City Dollars Requested	Amount of Other Revenues/In-kind Support
<i>Example: Cooler</i>	<i>Walk-in 6x10</i>	<i>\$5,000</i>	<i>\$5,000</i>	<i>\$0</i>
<i>Example: Labor for Cooler Install</i>	<i>6 hours</i>	<i>\$750</i>	<i>\$0</i>	<i>\$750</i>
Total Costs				

SUPPLEMENTARY MATERIALS (Optional)

Please include any additional materials that may clarify, strengthen, or support your application. **Photographs, price estimates, testimonials, and other secondary sources are highly recommended. Additional materials can also be attached as appendices via Word Doc, PDF, Excel spreadsheet, etc**

Yamuna LLC
2001 Fullerton drive
Prairie du fac, WI 53578

11/09/2022

City of Madison Economic Development Division
215 Martin Luther King, Jr. Blvd.
Madison, WI 53703

Dear Sir/Madam,

REF: Landlord Letter of Consent for Mumbai Bazaar Inc (Bombay Bazaar)

Yamuna LLC is the owner of the property located at 753 S Gammon Rd, Madison, WI 53719. The property is currently leased by Mumbai Bazaar Inc. Mumbai Bazaar Inc has been a tenant at this location for the last 15 years.

Yamuna LLC as the landlord is in full agreement of the proposed improvements to the above referenced leased property as part of the City of Madison HRAP application, and grant permission to Mumbai Bazaar Inc. to undertake the proposed improvements below. All proposed improvements are the financial responsibility of the tenant. Additionally, the contractor is responsible for all their work as it relates to the proposed work to prevent leaks or damage to exterior walls and roof.

1. Remove and replace evaporator, condenser, and all associated components for the Walk in Cooler.
2. Remove and replace evaporator, condenser, and all associated components for the Walk in Freezer.
3. Remove and replace all doors of the walk-in cooler.
4. Remove and replace all doors of the walk-in freezer.
5. Upgrade all the lighting in the store
6. Add a (4) door reach-in freezer and associated outdoor condenser.

Please let me know how if you have more questions.

Thank you,



Vittal Shah (Owner)
Yamuna LLC

09/29/2022

TO WHOM IT MAY CONCERN

REF: Letter of Intent to Provide Services Associated with the Grant Request

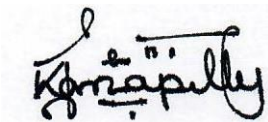
Monaire is a leader in HVAC/R predictive maintenance and management for small commercial buildings. We offer a unique pairing of software and services to save our customers money on emergency repairs and energy bills. Our technology leverages smart sensors and artificial intelligence to detect HVAC and Refrigeration issues early, and we work our network of qualified contractors to fix these issues before they lead to system failure.

Monaire currently monitors, manages, services and maintains all HVAC and refrigeration systems at Bombay Bazaar. Monaire would like to express our intent to source and install and the items applied for in the grant. The work we propose do perform at Bombay Bazaar with this letter are:

1. Remove and replace evaporator, condenser and all associated components for the Walk in Cooler.
2. Remove and replace evaporator, condenser and all associated components for the Walk in Freezer.
3. Remove and replace all (5) doors of the walk in cooler.
4. Remove and replace all (5) doors of the walk in freezer.
5. Upgrade lighting by adding (4) Fixture Tombstones & (2) T8 LED Ballast Bypass Lamps Matching Existing Lamps Per Fixture in (25) Existing Fixtures.

Please let me know how if you have more questions.

Thank you,



Nish
608-400-9388
Monaire



Estimate

Monaire

Waltham Massachusetts 02452
U.S.A

EST-000018

Bill To

Bombay Bazaar

Madison
WI
USA

Estimate Date : 14 Dec 2022

Expiry Date : 14 Jan 2023

#	Item & Description	Quantity / Sq. Ft.	Rate	Amount
1	Remove and Replace All Walk In Cooler Refrigeration Equipment Remove all existing refrigeration equipment (evaporator, condenser and associated parts) and Install a new complete 3 HP Med. Temp scroll condenser, low profile air defrost evaporator, 5Ton Med temp TXV, solenoid coil, piping, refrigerant (449A), plastic e-pad refrigeration system and KE2 Evaporator OEM Controllers mounted in UL-508 Panel, (Six) 40' Color Temperature Sensors and (Two)Terminal Boards for control cooler	1.00	18,711.00	18,711.00
2	Remove and Replace All Walk in Freezer Refrigeration Equipment Remove all existing refrigeration equipment (evaporator, condenser and associated parts) and Install a new complete 6 HP Low. Temp scroll condenser, low profile electric defrost 230 V 4 fan motor evaporator, suction accumulator, receiver insulation, time delay relay, thermostat, solenoid coil, piping, refrigerant (449A), plastic e-pad refrigeration system and KE2 Evaporator OEM Controllers mounted in UL-508 Panel, (Six) 40' Color Temperature Sensors and (Two)Terminal Boards for control Freezer	1.00	22,788.00	22,788.00
3	Replace Walk in Freezer/Cooler Door Completely remove and replace (5) cooler and (5) freezer doors including all associated parts and frame.	1.00 pcs	21,450.00	21,450.00
			Sub Total	62,949.00
			Wisconsin sales tax (5.5%)	3,462.20
			Total	\$66,411.20

Notes

Thank you for your business

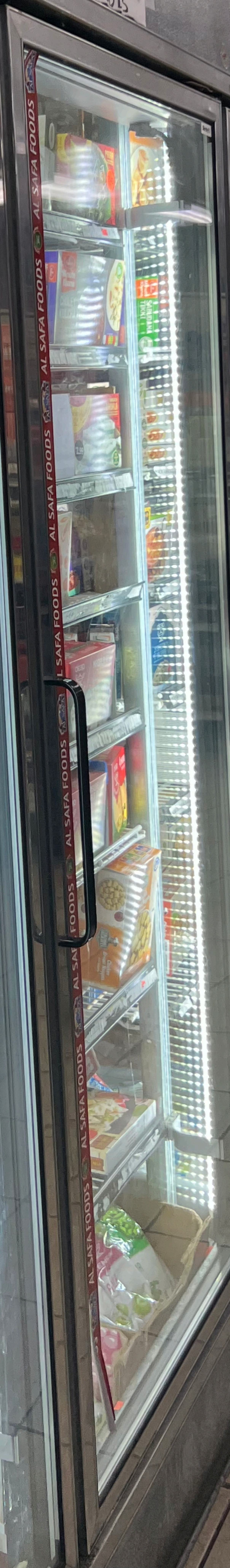
Terms & Conditions

<https://www.monaire.ai/terms>

FROZEN VEGETABLES



FROZEN FOODS



FROZEN FOODS



FROZEN FOODS



LEGACY SERIES DOORS



Doors for areas where DOE Compliance is not required.

For DOE Compliant doors add the optional 2 Pane Low E Argon gas filled glass package, 1 light switch per frame and 1 controller for up to 15 doors.

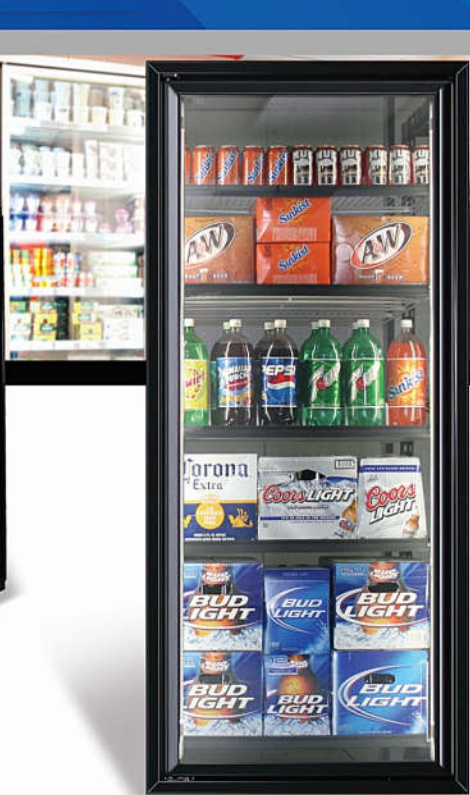
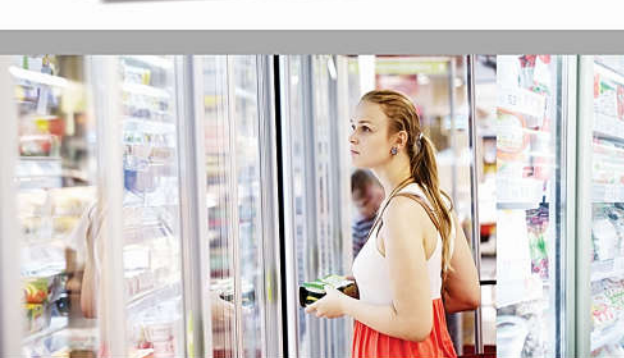
Options include Full Length handles, a wide variety of Shelving configurations, High Definition LED lighting package and more to allow you to customize doors to meet your needs.

The Legacy Series door is the industry standard. Featuring Standard 2 pane non heated glass package for coolers and 3 pane heated for freezers.

Tube style LED Lamp with optional Hi Definition LED lighting available.

The T mullion Design provides the strongest frame for durability and years of dependable service.

Exclusive hold open with no arm to bind combined with our patented Kwik Torque and Kwik Level system gives you a door that compares with more expensive doors at a competitive price a value not to be over looked.



Phone: (800) 478-3790

Phone: (818) 361-8160

Fax: (818) 361-8152

www.cdsdoors.net

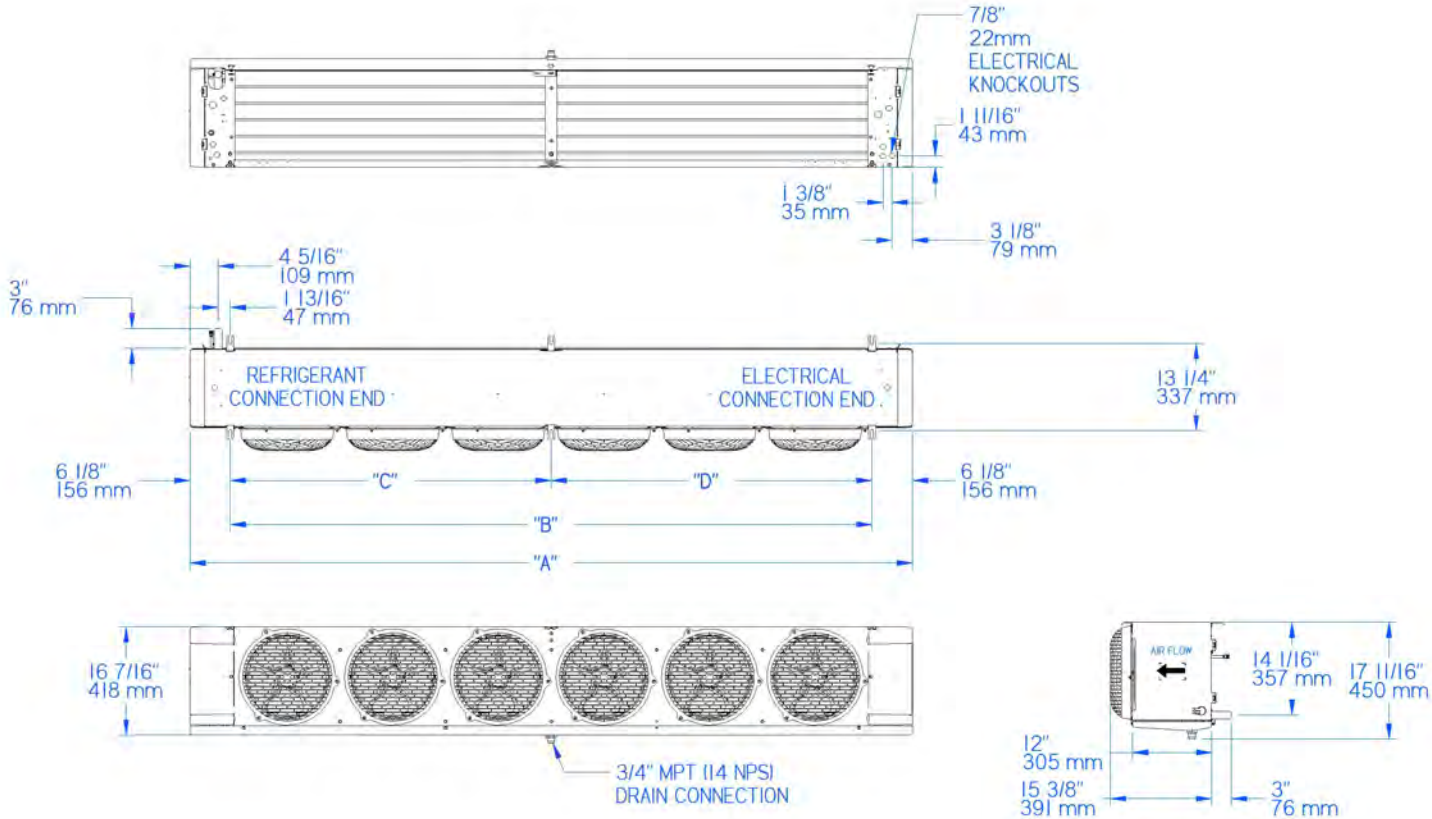
Commercial Display Systems LLC
17341 Sierra Highway
Canyon Country CA 91351

LOW PROFILE UNIT COOLERS

Technical Guide
Including models meeting DOE minimum AWEF



DIMENSIONAL DRAWINGS



No. of Fans	A		B		C		D	
	in.	mm	in.	mm	in.	mm	in.	mm
1	29.5	749	17.25	438	-	-	-	-
2	45.5	1,156	33.25	845	-	-	-	-
3	61.5	1,562	49.25	1,251	-	-	-	-
4	77.5	1,969	65.25	1,657	-	-	-	-
5	93.5	2,375	81.25	2,064	48.63	1,235	32.63	829
6	109.5	2,781	97.25	2,470	48.63	1,235	48.63	1,235

Note:
Hanger brackets will accept 3/8" / 9.5 mm hanger rods

1/2 - 6 HP AIR-COOLED CONDENSING UNITS

Technical Guide
Now including DOE compliant models





TABLE OF CONTENTS

3	Features & Benefits
4	Nomenclature
4	Preferred Option Packages
5	Standard Features
5	Electrical & Mechanical Options
6	Scroll Compressor Models
6	Performance Data
6	Medium Temperature (R-404A/R-507A)
8	Medium Temperature (R-448A/R-449A)
10	Medium Temperature (R-407A)
12	Medium Temperature (R-407C)
14	Low Temperature (R-404A/R-507A)
16	Low Temperature (R-448A/R-449A)
18	Low Temperature (R-407A/R-407F)
20	Low Temperature (R-407C)
22	Unit Specifications
23	Electrical Data
23	Medium Temperature Copeland Scroll Models
25	Medium Temperature LG Scroll Models
26	Low Temperature Copeland Scroll Models
27	AWEF Medium Temperature Data
27	Medium Temperature Copeland Scroll Models
29	Medium Temperature LG Scroll Models
30	AWEF Low Temperature Data
30	Low Temperature Copeland Scroll Models
31	Hermetic Compressor Models
31	Performance Data
31	Medium Temperature (R-404A/R-507A)
32	Medium Temperature (R-448A/R-449A)
33	Medium Temperature (R-407A)
34	Low Temperature (R-404A/R-507A)
35	Unit Specifications
36	Electrical Data
37	AWEF Medium Temperature Data
37	AWEF Low Temperature Data
38	Replacement Parts
40	Dimensional Diagrams

FEATURES & BENEFITS

CABINET AND CONSTRUCTION

- Microchannel coil technology standard on all units
- Painted steel cabinets for superior strength and corrosion protection
- Heavy duty, steel, 1-1/2" tall base

SERVICEABILITY

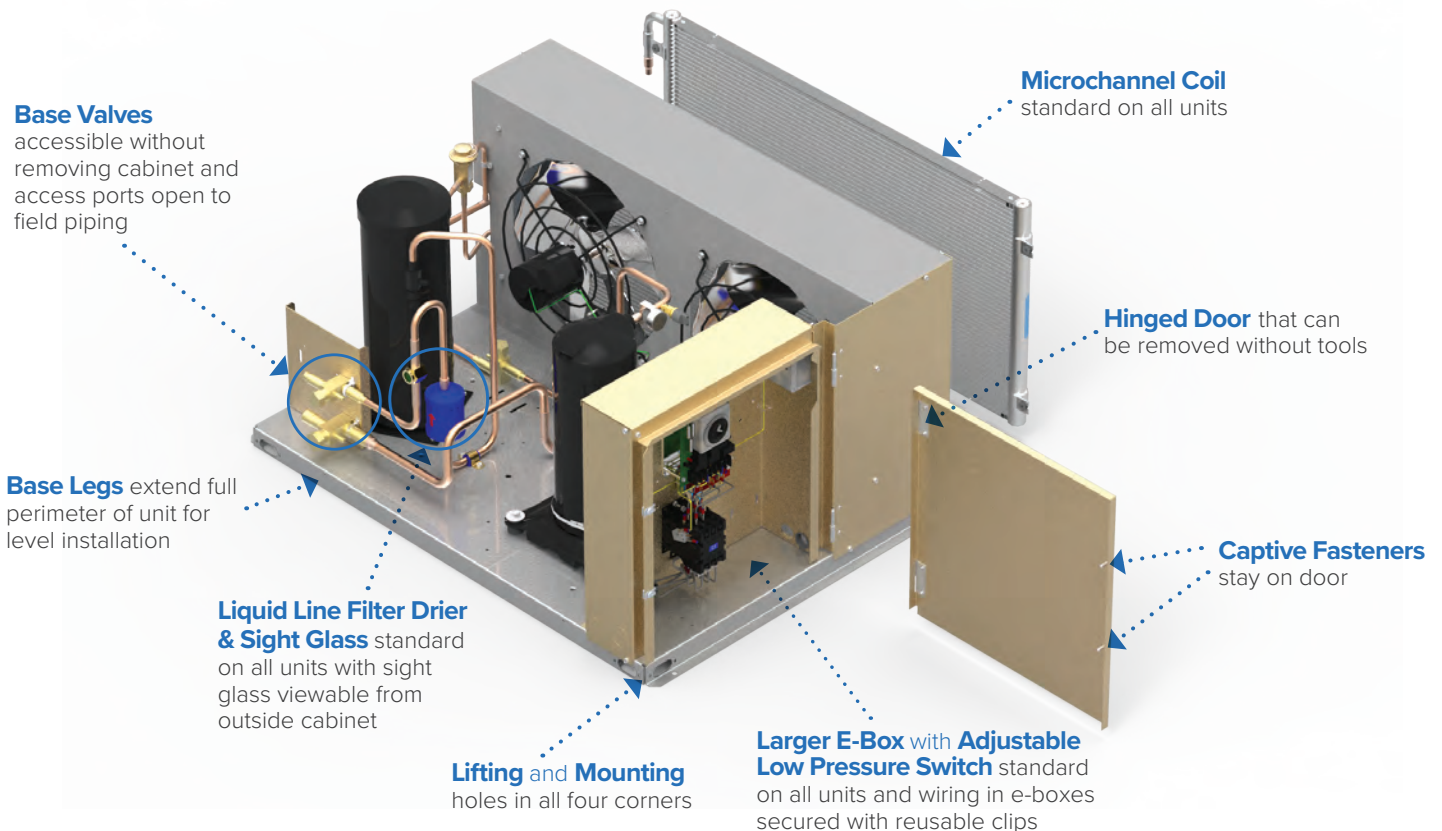
- Suction service valves for hermetic and scroll compressors located outside the cabinet for quick installations.
- Receiver with fusible plug, liquid shutoff valve and charging port is standard
- Large electrical panel for ease of access
- Prefabricated wiring harnesses for tight crimp connections and consistent labeling

- Unit stays on if the hood is removed for servicing
- Sight glass is easily viewable

QUALITY

- All units are completely leak tested in a helium environment, bump tested and allowed to cycle off on the high and low pressure control. Each unit has a copy of the run data shipped inside the electrical panel
- Electrical circuits are completely checked for continuity
- Piping is laid out to minimize stress and vibration and is pre-bent to eliminate leaks
- Encapsulated, auto-reset, high and low pressure controls to eliminate leaks (adjustable low pressure control standard on all models)

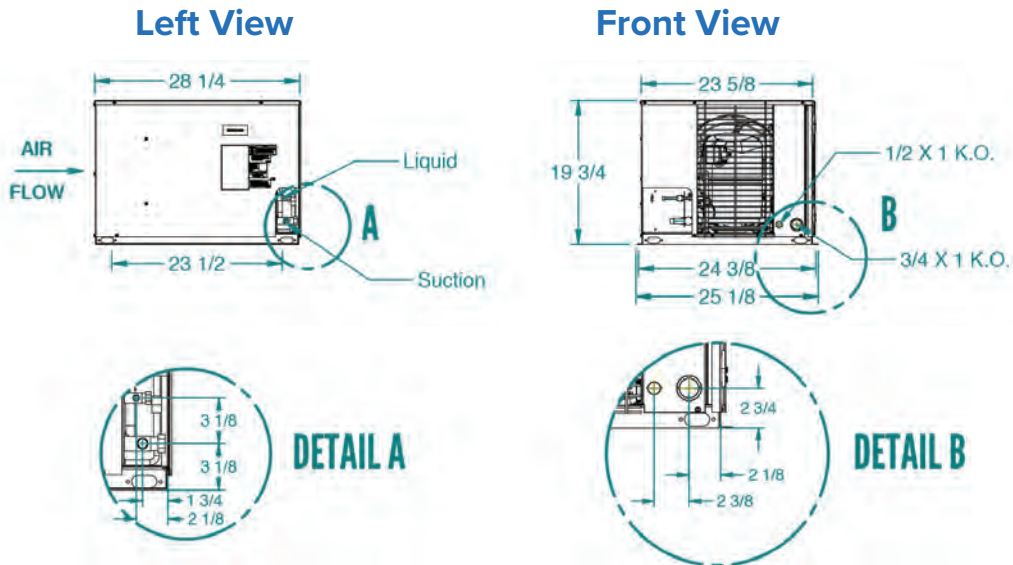
OUTSTANDING FEATURES



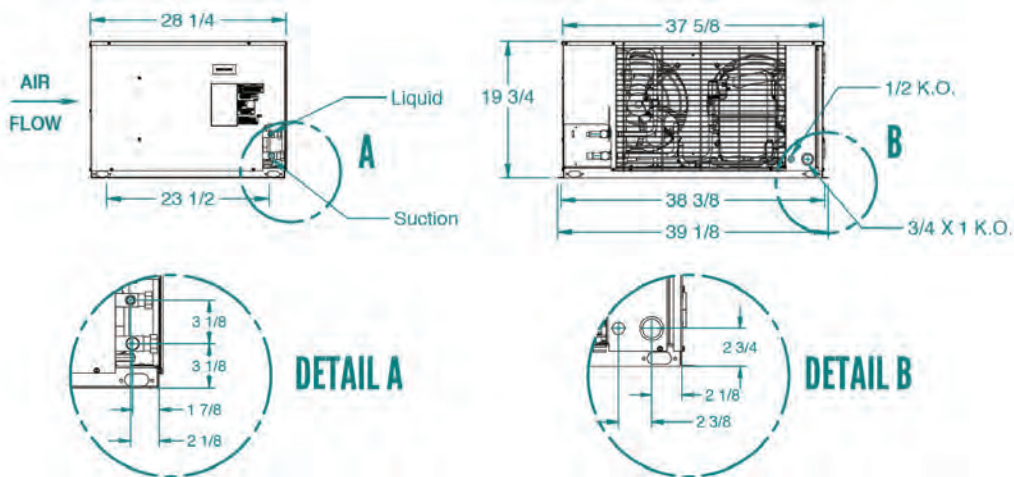
DIMENSIONAL DRAWINGS

Outdoor

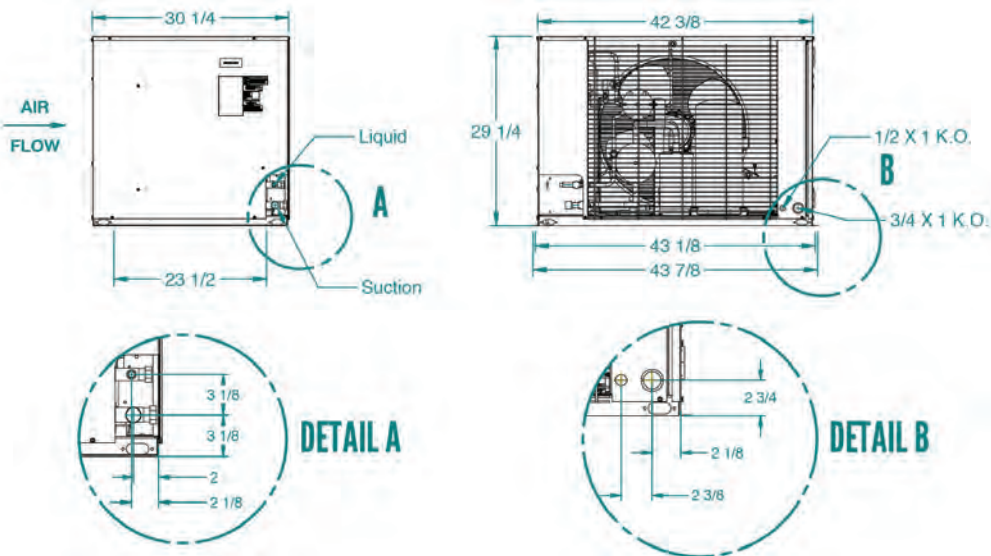
C1



C2



C3



KE2 Evaporator Efficiency

GENERAL PRODUCTION INFORMATION

The KE2 Evaporator Efficiency (KE2 Evap) is an electronic evaporator controller designed to save energy, provide tight temperature control, monitor the room/system, and provide advanced notice of issues with the refrigeration system.

B.1.1 // MARCH 2022



APPLICATIONS

Walk-in, Commercial, Reach-in & Warehouse



COMMUNICATES

Email & Text Alerts, Remote Access, Graph, Datalog

CONTROLS

Temperature, Defrost, Evap Fans, Electric Expansion Valve (EEV)

REPLACES

Thermostat, Defrost Time Clock, Defrost Termination/Fan Delay



INTRODUCTION

The KE2 Evap reduces energy used by the system through a proprietary demand defrost algorithm based on actual evaporator efficiency, advanced fan and heater management, reducing compressor run time, and precise control of superheat when optionally used with an Electric Expansion Valve (EEV). The KE2 Evap was designed with a quick payback and a life expectancy that matches that of the system. The controller pays for itself, then continues to pay dividends for the life of the system.

Tight temperature control is achieved through a reduction in defrosts, management of heaters once in defrost, and management of fans during the off cycle. This maintains product integrity, helps prevent freezer burn, and has the added benefit of eliminating frost/condensate on ceilings, walls, floors, and fixtures inside the space caused by excessive defrost heat.

Once provided internet access, the KE2 Evap has the ability to communicate to the KE2 SmartAccess portal for remote monitoring and control. This allows critical alarms and notifications to be sent via text or email. Many of the alerts provide advance notification of system issues, well before product temperature is affected.

FEATURES & BENEFITS

- Performs the function of multiple components: thermostat, defrost time clock, defrost termination, and fan delay.
- Energy saving adaptive defrost and fan management, saving 15%-50% over traditional controls.
- Remote monitoring, control, and email/text alerts.
- Improved product integrity and reduced spoilage – eliminates unnecessary defrost cycles, which reduces freezer burn, temperature spikes, and helps maintain product quality.
- Eliminates ice formation on floors, ceilings, and fixtures due to excess defrost.
- 30 day graph of room and coil temperature.
- Built-in data log provides 30 days of system operation history.
- Precise superheat control and additional energy savings with optional KE2 RSV (EEV).
- Optional door switch with all the necessary time delays.
- For new equipment or upgrade of existing equipment.
- Eliminates complexity - simplifying wiring and programming.
- Displays temperature to 1/10 of a degree.
- Reduces the amount of defrost heat to reduce steaming.
- Manual defrost.
- Alarms – multiple meaningful alarms that allow action before room temperature is affected.
- Visual display of active alarm, alarm relay output for 3rd party devices, and email/text alerts.



Commercial refrigeration applications

Move on from R404A to R449A

In stationary systems with remote condensing units and self-contained units. We are ready when you are.

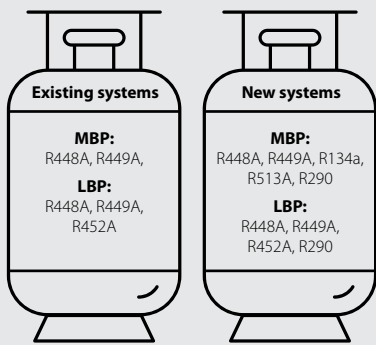
+ **New installations**

✎ Redesign and retrofit
If the condensing unit is not qualified for alternative refrigerants.

↻ Drop-in
If the condensing unit is already qualified for alternative refrigerants. No major changes in the system.

Possible replacements for R404A

Main refrigerants in play – non-exhaustive list.



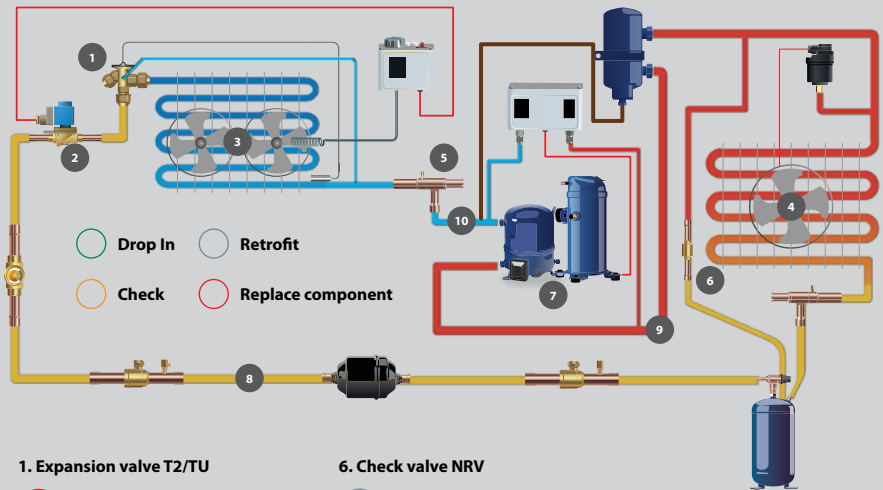
You can view a detailed log(p)-h diagram for your chosen refrigerant in **Coolselector®2**

For potential charge limitation of A2L refrigerants, please refer to your local regulations.

1. Use **Coolselector®2** to select a new condensing unit, compressor, and other system components.
2. Use the **Coolselector®2** commercial applications module to calculate cold room loads and find all Danfoss solutions for a specific refrigerant.
3. Pay close attention to Ecodesign level of the condensing unit.

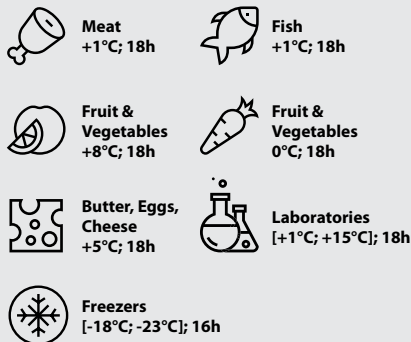
1. Ensure that the compressor or condensing unit operating map with new refrigerant fits with your application.
2. Adjust settings for expansion valves, safety switches, and the controller, if any.
3. Clean the system and change the filter drier and sight glass for a longer lifetime.

Impact on system performance with R449A



- 1. Expansion valve T2/TU**
 - +35% Valve is probably oversized, risk of malfunction; check and replace, if needed
 - 5K Risk of malfunction. Requires big change in settings. Superheat adjustment is critical.
 - 2. Solenoid valve EVRv2**
 - +30% Check if the valve is oversized
 - 3. Evaporator (Te = -30°C)**
 - +16% Check dimensioning
 - 4. Condenser MCHC (Tc = 40°C)**
 - 16% Check dimensioning
 - 5. Pressure regulator KVP**
 - +7% Valve should be ok
 - 6. Check valve NRV**
 - +12% Check if valve is oversized
 - 7. Compressor MTZ/NTZ/MLZ/LLZ and Optyma™ condensing units**
 - 12K Discharge temperature change
 - 6% Heating capacity
 - 8% Cooling capacity should be ok
 - +1% Power
 - 10% COP
 - 8. Liquid line**
 - +33% Piping oversized
No risk, just low velocity
 - 9. Discharge line**
 - +4% Pipe should be ok
 - +68°C Discharge temperature
 - 10. Suction line**
 - +1% Pipe should be ok
- Other components**
DML, DCL filter driers, SGP sight glass, GBC ball valves, KP pressure switches, XGE fan speed controller are qualified for this refrigerant. No resize is needed.

Typical operating temperatures and times in cold rooms



Access our online resources 24/7

[Coolselector®2](#) [Refrigerant Slider](#) [Retrofit guidelines](#) [Refrigerants.danfoss.com](#)

Tested and approved
All new and upgraded Danfoss products undergo extensive testing to qualify for new refrigerants.

Source: Danfoss, example for a medium temperature application operating at -10°C with 35°C condensation temperatures