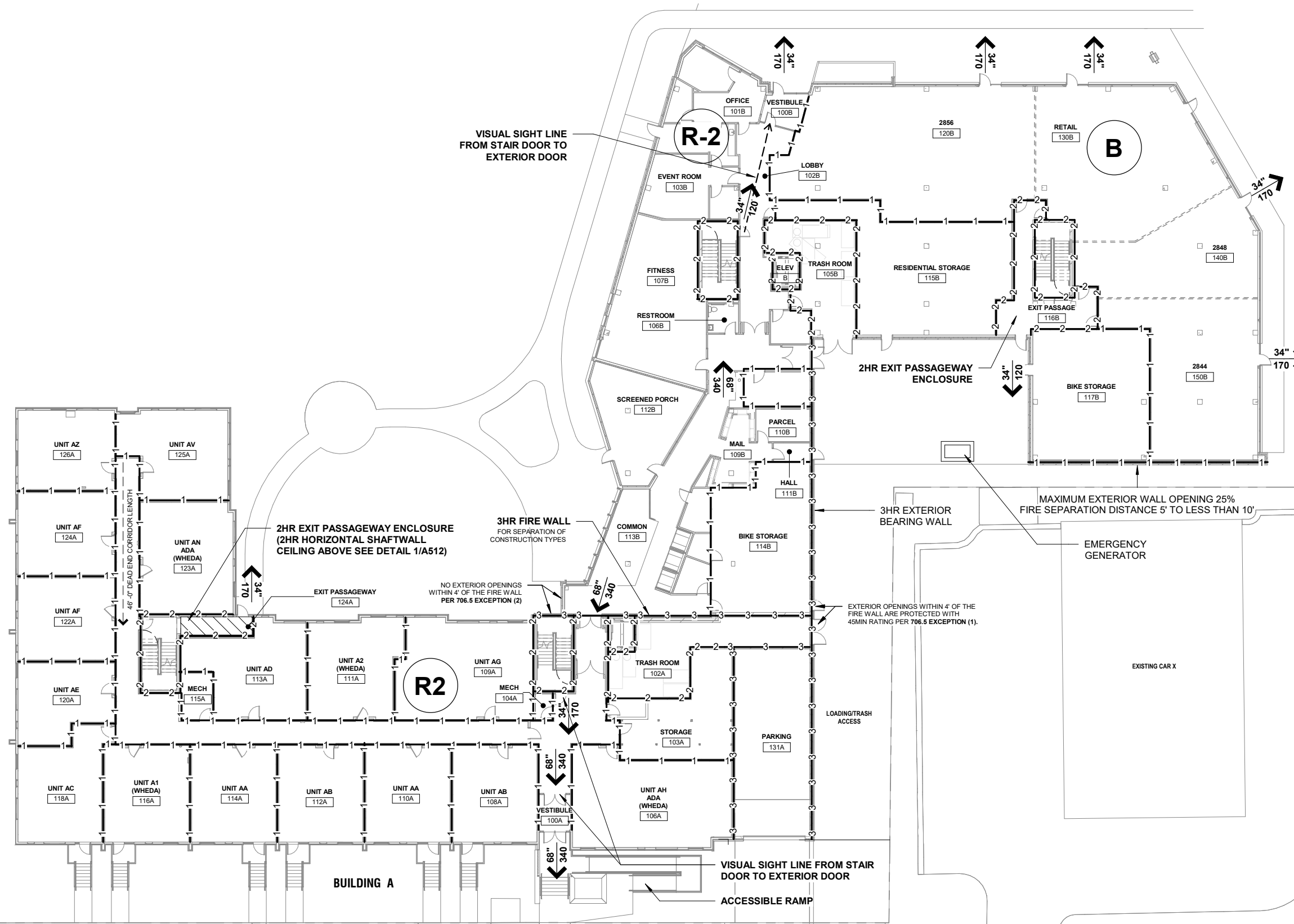


BUILDING B



CODE INFORMATION

2860 EAST WASHINGTON REDEVELOPMENT POTTER LAWSON PROJECT NO. 2019.20.00
 2860 EAST WASHINGTON AVENUE
 325 NORTH LAWN AVENUE
 MADISON, WI 53704

GENERAL CODE INFORMATION			
ITEM	INFORMATION		REMARKS
DESIGN CODE(s):	WISCONSIN ENROLLED CODE 2015 IBC		
OCCUPANCY(ies):	R-2 RESIDENTIAL S-2 PARKING B BUSINESS A-3 ASSEMBLY		SEPARATED MIXED-USE
CONSTRUCTION TYPE:	S-2 TYPE IA B TYPE IA R-2 TYPE IA & TYPE VA A-3 TYPE VA	S-2 TYPE IA B TYPE IA R-2 TYPE IA & TYPE VA A-3 TYPE VA	
BUILDING HEIGHT & NO. OF STORIES: STORIES	TYPE IA - 1 STORY R-2/S-2/B510.2 HORIZONTAL BUILDING SEPARATING ALLOWANCE TYPE VA - 4 STORIES R-2		
BUILDING HEIGHT	TYPE IA 14' - 0" TYPE VA 46' - 8" TOTAL 60' - 8"	TYPE IA UL HEIGHT TYPE VA (R-2) 70'-0" MAX	
FULLY SPRINKLED?:	YES, NFPA 13		

BUILDING AREAS		
ITEM	ALLOWABLE AREA / FLOOR: NO. OF STORIES	ACTUAL AREA / FLOOR: NO. OF STORIES
CONSTRUCTION TYPE		
TYPE IA S-2 TYPE IA B TYPE IA R-2	UNLIMITED; UNLIMITED UNLIMITED; UNLIMITED UNLIMITED; UNLIMITED	46,020GSF, 1 STORY 7,100GSF, 1 STORY 11,600GSF, 1 STORY
TYPE VA R-2 TYPE VA A-3	36,000SF; 4 STORIES 34,500SF; 3 STORIES	31,870GSF, 4 STORIES 3,425SF, 1 STORY

MEANS OF EGRESS

ITEM	REQUIRED	PROVIDED / REMARKS
NUMBER OF EXITS	2 PER OCCUPIED FLOOR	2 PROVIDED

FIRE RESISTANCE, SUPPRESSION, AND ALARM

ITEM	REQUIRED	PROVIDED
NUMBER OF EXITS	2 PER OCCUPIED FLOOR	2 PROVIDED
TYPE IA - CONSTRUCTION		
PRIMARY STRUCTURAL FRAME	3HR	3HR
EXTERIOR BEARING WALLS	3HR	3HR
INTERIOR BEARING WALLS	3HR	3HR
EXTERIOR NON-BEARING WALLS	SEE TABLE 602	SEE TABLE 602
INTERIOR NON-BEARING WALLS	0HR	0HR
FLOORS	2HR	2HR
ROOF	1 1/2HR	1 1/2HR
STAIR SHAFTS	2HR	2HR
HORIZONTAL SEPARATION	3HR	3HR
TYPE VA - CONSTRUCTION		
PRIMARY STRUCTURAL FRAME	1HR	1HR
EXTERIOR BEARING WALLS	1HR	1HR
INTERIOR BEARING WALLS	1HR	1HR
EXTERIOR NON-BEARING WALLS	SEE TABLE 602	SEE TABLE 602
INTERIOR NON-BEARING WALLS	0HR	0HR
FLOORS	1HR	1HR
ROOF	1HR	1HR
STAIR SHAFTS	2HR	2HR
HORIZONTAL SEPARATION	3HR	3HR
FIRE SUPPRESSION	AUTOMATIC SPRINKLER SYSTEM FULL COVERAGE	NFPA TYPE 13
FIRE ALARM SYSTEM	FULL COVERAGE	

BUILDING B

TOTAL AREA OF UNITS & CORRIDOR WITH ONE EXIT IS 1,467SF (8 OCC.) (SHADED)

ALL ELEVATOR LOBBIES
ELEVATOR LOBBIES 708.14.1
 EXCEPTION 4.
 ENCLOSED ELEVATOR LOBBIES ARE NOT REQUIRED WHERE THE BUILDING IS PROTECTED BY AN AUTOMATIC SPRINKLER SYSTEM INSTALLED IN ACCORDANCE WITH SECTION 903.3.1.1 OR 903.3.1.2. THIS EXCEPTION SHALL NOT APPLY TO THE FOLLOWING:

- 4.1 GROUP I-2
- 4.2 GROUP I-3 OCCUPANCIES; AND
- 4.3 HIGH RISE BUILDINGS

1020.6 CORRIDOR CONTINUITY
 ELEVATOR DOOR OPENING PROTECTED BY 20 MIN SMOKE & DRAFT CONTROL ASSEMBLY

1009.8 TWO-WAY COMMUNICATION
 TWO WAY COMMUNICATION SYSTEM AT ALL ELEVATOR LOBBIES

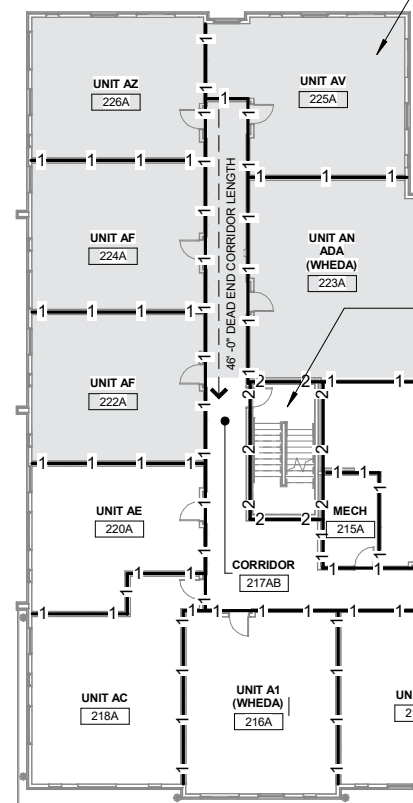
1029.6.3 OUTDOOR SMOKED PROTECTED ASSEMBLY SEATING
 REQUIRED CAPACITY IN INCHES OF AISLES OCCUPANT LOAD 238 X 0.06=14.28"

1029.9.1 MINIMUM AISLE WIDTH
 4. 42" FOR LEVEL OR RAMPED AISLES HAVING SEATING ON BOTH SIDES.

1020.6 CORRIDOR CONTINUITY
 ELEVATOR DOOR OPENING PROTECTED BY 20 MIN SMOKE & DRAFT CONTROL ASSEMBLY

1009.8 TWO-WAY COMMUNICATION
 TWO WAY COMMUNICATION SYSTEM AT ALL ELEVATOR LOBBIES

TOTAL AREA OF UNITS & CORRIDOR WITH ONE EXIT IS 3,617SF (19 OCC.) (SHADED)



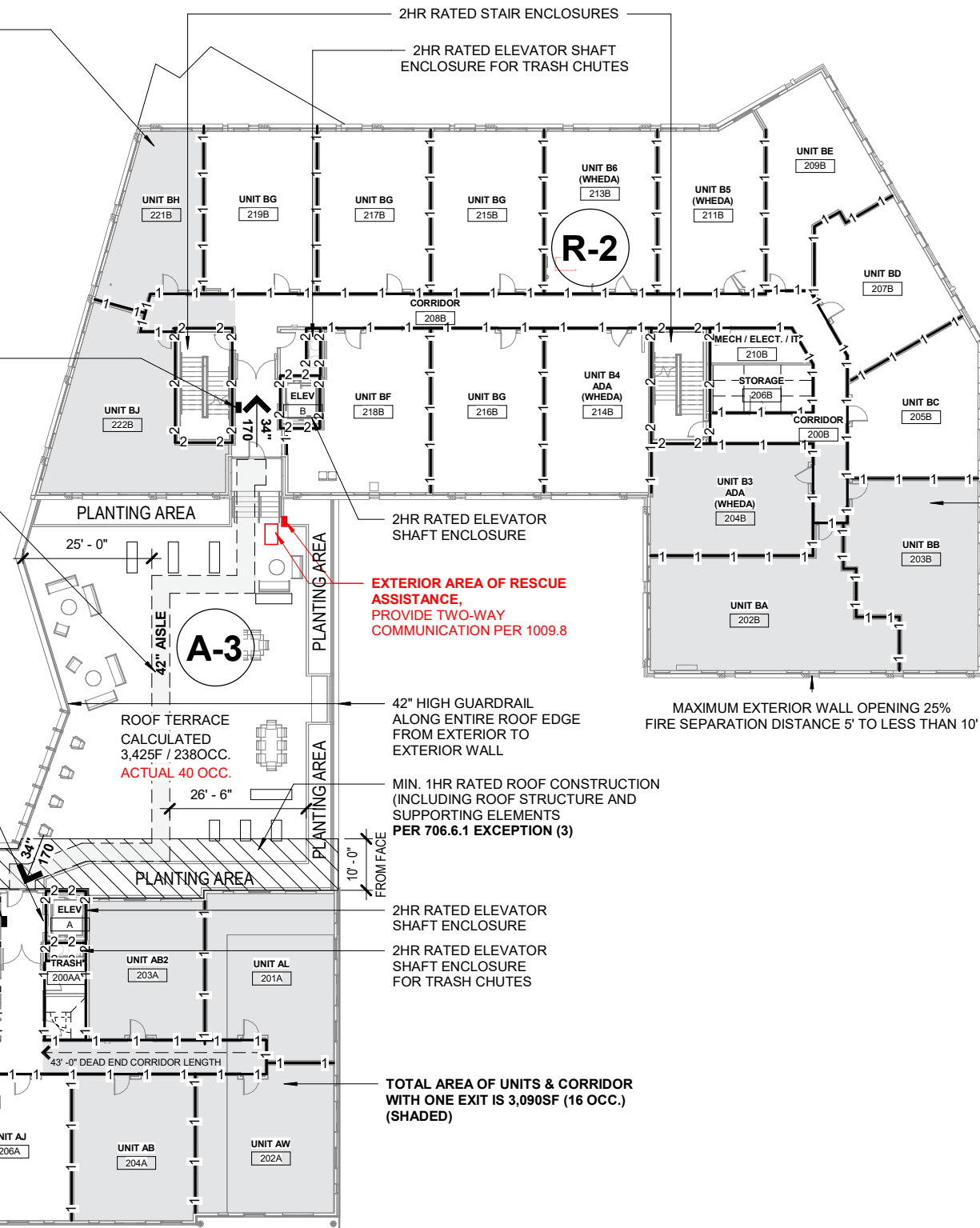
BUILDING A

2HR RATED STAIR ENCLOSURES
 2HR RATED ELEVATOR SHAFT ENCLOSURE FOR TRASH CHUTES

1006.2.1 EGRESS BASED ON OCCUPANT LOAD AND COMMON PATH OF EGRESS TRAVEL DISTANCE. TWO EXITS OR EXIT ACCESS DOORWAYS FROM ANY SPACE SHALL BE PROVIDED WHERE THE DESIGN OCCUPANT LOAD OR THE COMMON PATH OF EGRESS TRAVEL DISTANCE EXCEEDS THE VALUES LISTED IN TABLE 1006.2.1.

EXCEPTIONS:
 1. IN GROUP R-2 AND R-3 OCCUPANCIES, ONE MEANS OF EGRESS IS PERMITTED WITHIN AND FROM INDIVIDUAL DWELLING UNITS WITH A MAXIMUM OCCUPANT LOAD OF 20 WHERE THE DWELLING UNIT IS EQUIPPED THROUGH-OUT WITH AN AUTOMATIC SPRINKLER SYSTEM IN ACCORDANCE WITH SECTION 903.3.1.1 OR 903.3.1.2 AND THE COMMON PATH OF EGRESS TRAVEL DOES NOT EXCEED 125 FEET (38 100 MM).

TOTAL AREA OF UNITS & CORRIDOR WITH ONE EXIT IS 2,600SF (13 OCC.) (SHADED)



EXTERIOR AREA OF RESCUE ASSISTANCE, PROVIDE TWO-WAY COMMUNICATION PER 1009.8

ROOF TERRACE CALCULATED 3,425F / 238OCC. ACTUAL 40 OCC.

MIN. 1HR RATED ROOF CONSTRUCTION (INCLUDING ROOF STRUCTURE AND SUPPORTING ELEMENTS) PER 706.6.1 EXCEPTION (3)

2HR RATED ELEVATOR SHAFT ENCLOSURE
 2HR RATED ELEVATOR SHAFT ENCLOSURE FOR TRASH CHUTES

TOTAL AREA OF UNITS & CORRIDOR WITH ONE EXIT IS 3,090SF (16 OCC.) (SHADED)