

Village at Autumn Lake Phase 15 (Contract: 9378)  
Village at Autumn Lake Phase 15 Surface Paving (Contract: 9385)  
Project Number: 14929  
Entity: VAL, LLC



Village at Autumn Lake Replat – Lots 1038-1052

Village at Autumn Lake Replat No. 8 – Lots 1426, 1427, 1433-1440, 1452-1457

Public Improvements:

- Public watermain, storm, and sanitary sewer. Watermain and sanitary sewer to Phase from Felland Rd and Tranquility Trail intersection
- Street improvements on Woodbine Drive, August Moon Drive, Clover Basin Lane, and Felland Road. Surface paving with Contract 9385
- Tree removals (4) on east side of Felland Road for sidewalk.

**SUBMITTAL CHECKLIST**

1. Board T, Staff Engineer, Professional Land Surveyor S-2762 has made a careful check that this preliminary plan is a true and correct representation of the actual field conditions. The plan was prepared from data furnished to the engineer and that the data were obtained from a reliable source.

2. This plan is subject to the following recorded documents:  
 - Deed of Donation from Madison County to the City of Madison, Madison, Wisconsin, dated 05/12/2009  
 - Deed of Donation from Madison County to the City of Madison, Madison, Wisconsin, dated 05/12/2009 and amended by Ord. No. 08/15/09  
 - Deed of Donation from Madison County to the City of Madison, Madison, Wisconsin, dated 05/12/2009

3. All underlying assessments not shown on this preliminary plan will be released as part of the recording process. See this city of ordinance assessments.

4. All intersection right of way 15 feet.

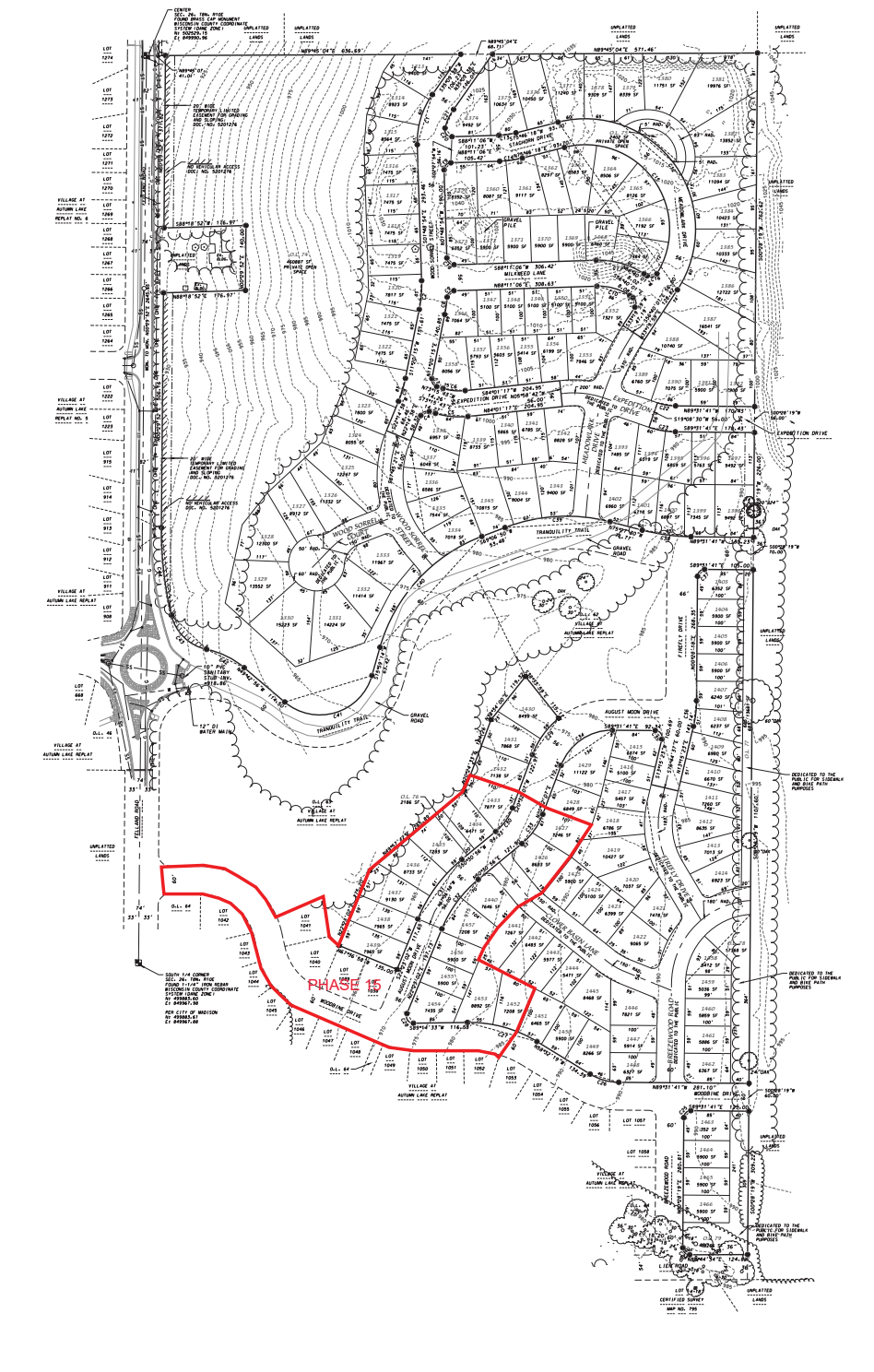
5. Existing and proposed points 18-23

6. Plan prepared under the supervision of Brett T. Stoffregen, Professional Land Surveyor, S-2762

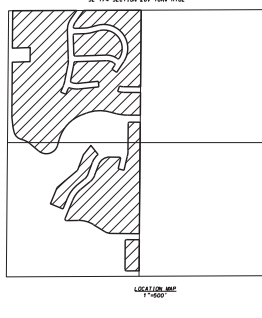
7. Brett T. Stoffregen, Professional Land Surveyor, S-2762

Dated this 15th day of September, 2023

- NOTES**
- This plan is subject to the following recorded documents:  
 - Deed of Donation from Madison County to the City of Madison, Madison, Wisconsin, dated 05/12/2009  
 - Deed of Donation from Madison County to the City of Madison, Madison, Wisconsin, dated 05/12/2009 and amended by Ord. No. 08/15/09  
 - Deed of Donation from Madison County to the City of Madison, Madison, Wisconsin, dated 05/12/2009
  - All underlying assessments not shown on this preliminary plan will be released as part of the recording process. See this city of ordinance assessments.
  - All intersection right of way 15 feet.
  - Existing and proposed points 18-23
  - Plan prepared under the supervision of Brett T. Stoffregen, Professional Land Surveyor, S-2762
  - Brett T. Stoffregen, Professional Land Surveyor, S-2762



CURVE	LOT	RADIUS	CHORD	ARC	CENTRAL ANGLE	TANGENT BEARING
NUMBER	(FEET)	(FEET)	(FEET)	(FEET)	(DEGREES)	(DEGREES)
C1	178.0	102.89	102.89	178.00	90°00'00"	S00°00'00"W
C2	272.0	82.50	82.50	272.00	90°00'00"	S00°00'00"W
C3	178.0	20.17	20.17	178.00	90°00'00"	S00°00'00"W
C4	178.0	20.17	20.17	178.00	90°00'00"	S00°00'00"W
C5	150.0	20.19	20.19	150.00	90°00'00"	S00°00'00"W
C6	150.0	20.19	20.19	150.00	90°00'00"	S00°00'00"W
C7	150.0	20.19	20.19	150.00	90°00'00"	S00°00'00"W
C8	150.0	20.19	20.19	150.00	90°00'00"	S00°00'00"W
C9	150.0	20.19	20.19	150.00	90°00'00"	S00°00'00"W
C10	150.0	20.19	20.19	150.00	90°00'00"	S00°00'00"W
C11	150.0	20.19	20.19	150.00	90°00'00"	S00°00'00"W
C12	150.0	20.19	20.19	150.00	90°00'00"	S00°00'00"W
C13	150.0	20.19	20.19	150.00	90°00'00"	S00°00'00"W
C14	150.0	20.19	20.19	150.00	90°00'00"	S00°00'00"W
C15	150.0	20.19	20.19	150.00	90°00'00"	S00°00'00"W
C16	150.0	20.19	20.19	150.00	90°00'00"	S00°00'00"W
C17	150.0	20.19	20.19	150.00	90°00'00"	S00°00'00"W
C18	150.0	20.19	20.19	150.00	90°00'00"	S00°00'00"W
C19	150.0	20.19	20.19	150.00	90°00'00"	S00°00'00"W
C20	150.0	20.19	20.19	150.00	90°00'00"	S00°00'00"W
C21	150.0	20.19	20.19	150.00	90°00'00"	S00°00'00"W
C22	150.0	20.19	20.19	150.00	90°00'00"	S00°00'00"W
C23	150.0	20.19	20.19	150.00	90°00'00"	S00°00'00"W
C24	150.0	20.19	20.19	150.00	90°00'00"	S00°00'00"W
C25	150.0	20.19	20.19	150.00	90°00'00"	S00°00'00"W
C26	150.0	20.19	20.19	150.00	90°00'00"	S00°00'00"W
C27	150.0	20.19	20.19	150.00	90°00'00"	S00°00'00"W
C28	150.0	20.19	20.19	150.00	90°00'00"	S00°00'00"W
C29	150.0	20.19	20.19	150.00	90°00'00"	S00°00'00"W
C30	150.0	20.19	20.19	150.00	90°00'00"	S00°00'00"W
C31	150.0	20.19	20.19	150.00	90°00'00"	S00°00'00"W
C32	150.0	20.19	20.19	150.00	90°00'00"	S00°00'00"W
C33	150.0	20.19	20.19	150.00	90°00'00"	S00°00'00"W
C34	150.0	20.19	20.19	150.00	90°00'00"	S00°00'00"W
C35	150.0	20.19	20.19	150.00	90°00'00"	S00°00'00"W
C36	150.0	20.19	20.19	150.00	90°00'00"	S00°00'00"W
C37	150.0	20.19	20.19	150.00	90°00'00"	S00°00'00"W
C38	150.0	20.19	20.19	150.00	90°00'00"	S00°00'00"W
C39	150.0	20.19	20.19	150.00	90°00'00"	S00°00'00"W
C40	150.0	20.19	20.19	150.00	90°00'00"	S00°00'00"W
C41	150.0	20.19	20.19	150.00	90°00'00"	S00°00'00"W
C42	150.0	20.19	20.19	150.00	90°00'00"	S00°00'00"W



DATE: 09-18-23  
 REVISION:  
 SCALE: 1" = 100'  
 (PAGE SIZE 11x17)  
 FILE: 23-07-111  
 Sheet Number:  
 1 of 1

**PRELIMINARY PLAT**  
**VILLAGE AT AUTUMN LAKE REPLAT NO. 8**

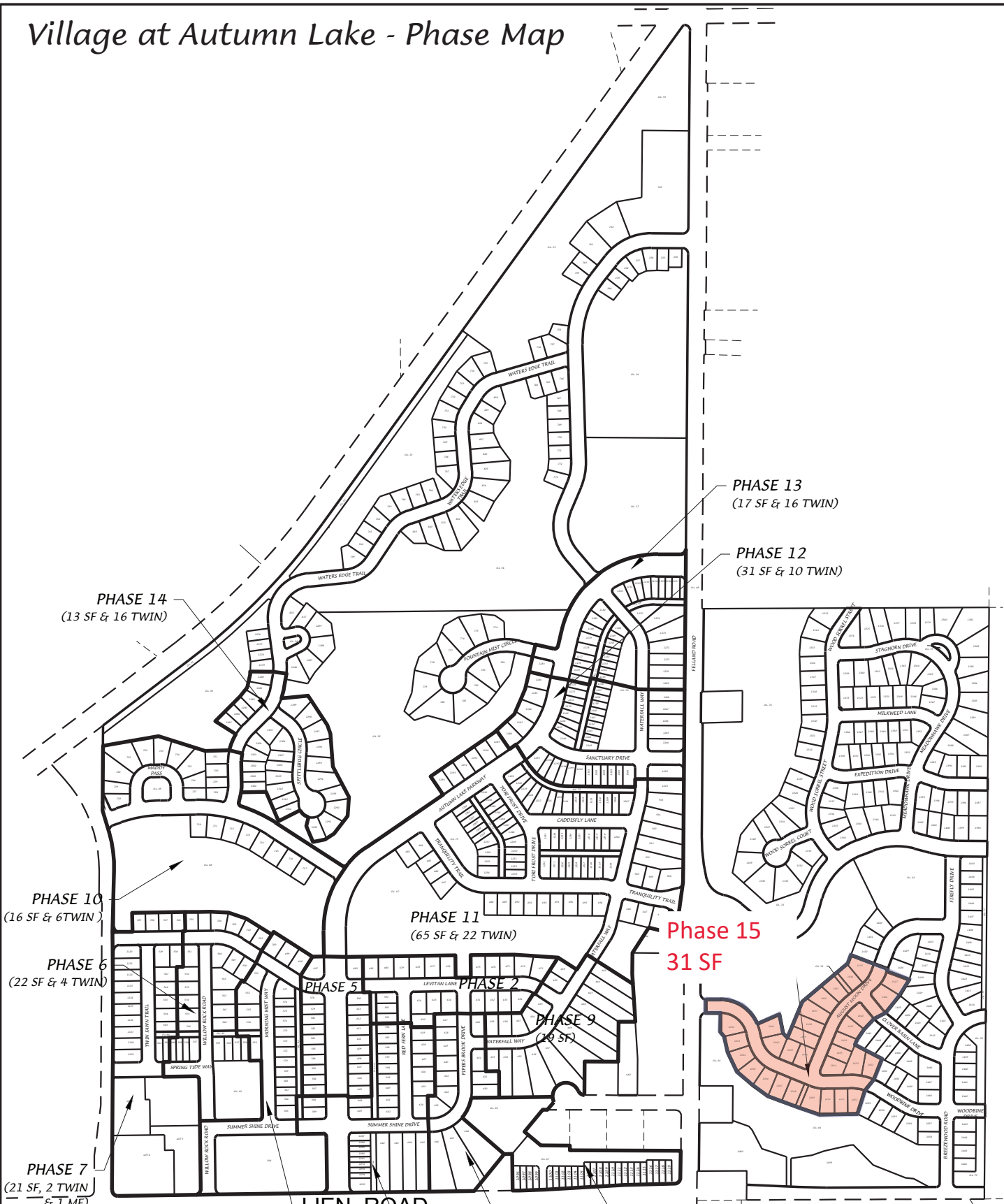
LOTS 923-1077, 1061-1086, OUTFLOTS 60, 61, 65 AND PORTIONS OF HEADWATER DRIVE, EXPEDITION DRIVE, WOOD SORREL STREET, WOOD SORREL COURT, FIRREY DRIVE, CLOVER BASIN LAKE AND BREEZEWOOD ROAD, TO BE DISCONTINUED AND VACATED BY THE CITY OF MADISON, ALL WITHIN VILLAGE AT AUTUMN LAKE REPLAT, RECORDED IN VOLUME 60-0434 OF PLATS ON PAGES 230-249 AS DOCUMENT NUMBER 520127E IN THE DANE COUNTY REGISTER OF DEEDS OFFICE, LOCATED IN THE NW1/4 OF THE SE1/4 AND THE SW1/4 OF THE SE1/4 OF SECTION 26, T8N, R10E, CITY OF MADISON, DANE COUNTY, WISCONSIN.

**DEVELOPER NOTES AND ASSOCIATES, INC.**

7500 W. WISCONSIN AVENUE, SUITE 2077  
 MADISON, WI 53704-2077  
 608.261.1700  
 WWW.DEVELOPERNOTESANDASSOCIATES.COM

**YOU'VE GOT TO HAVE DEVELOPMENT**

# Village at Autumn Lake - Phase Map



PHASE 14  
(13 SF & 16 TWIN)

PHASE 13  
(17 SF & 16 TWIN)

PHASE 12  
(31 SF & 10 TWIN)

PHASE 10  
(16 SF & 6 TWIN)

PHASE 11  
(65 SF & 22 TWIN)

Phase 15  
31 SF

PHASE 6  
(22 SF & 4 TWIN)

PHASE 5

PHASE 2

PHASE 9  
(19 SF)

PHASE 7  
(21 SF, 2 TWIN & 1 MF)

PHASE 4

PHASE 1

PHASE 3

PHASE 8  
(PH8-10 TWIN)  
(PH8B-14 TWIN)

DATE: 01-25-24

F.N.: 23-05-138

REV.

DRAWN BY: DRH

U:/USER/1407117/DRAWINGS/PHASE MAP.DWG

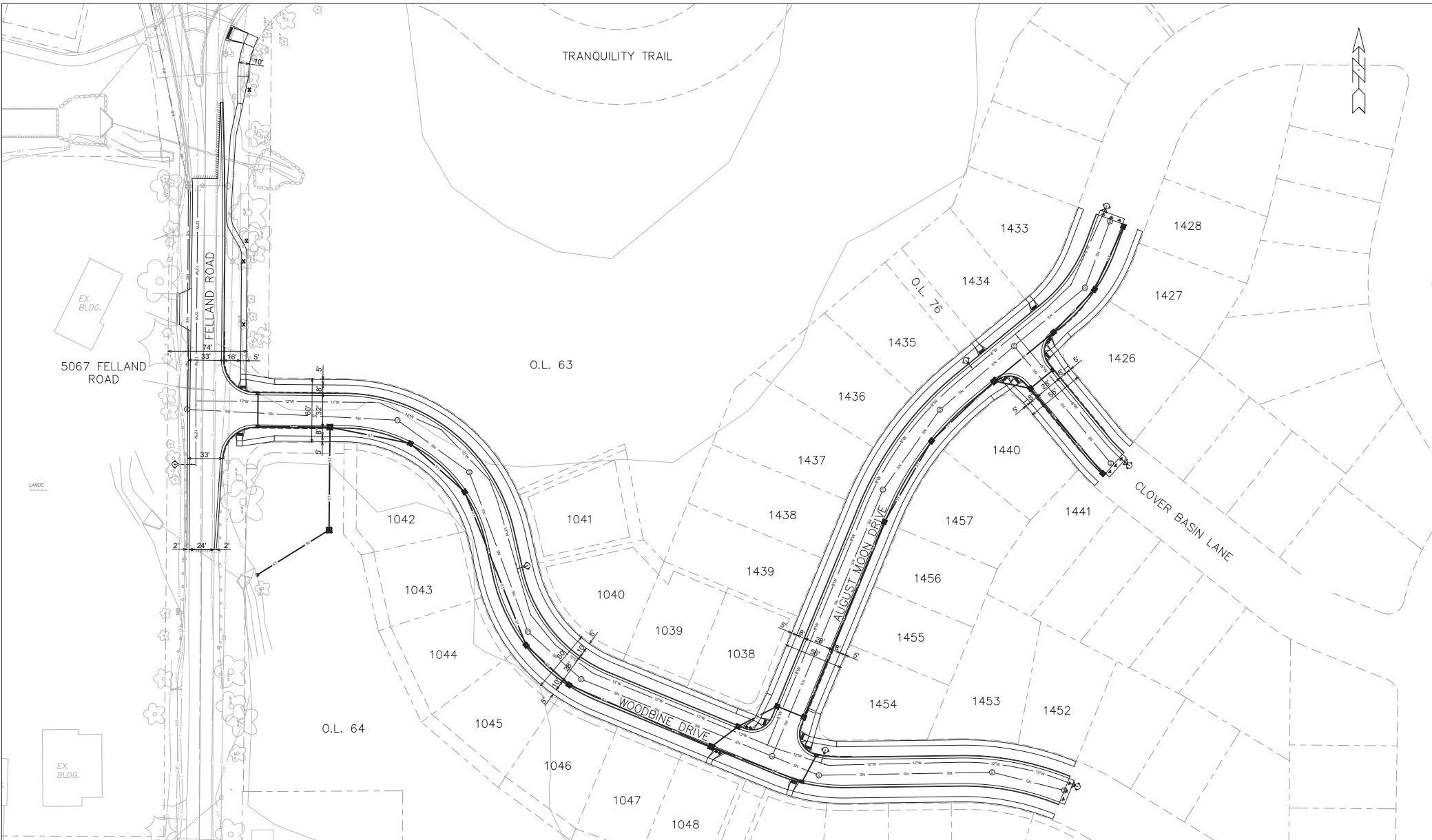
**D'ONOFRIO KUTTKE AND ASSOCIATES, INC.**

7530 Westward Way, Madison, WI 53717  
Phone: 608.833.7530 • Fax: 608.833.1089  
YOUR NATURAL RESOURCE FOR LAND DEVELOPMENT



Scale 1" = 600'

# EXHIBIT OF IMPROVEMENTS - VILLAGE AT AUTUMN LAKE PHASE 15 BOARD OF PUBLIC WORKS - 03/20/2024



# EXHIBIT OF IMPROVEMENTS - VILLAGE AT AUTUMN LAKE PHASE 15 BOARD OF PUBLIC WORKS - 03/20/2024

