










LEGEND

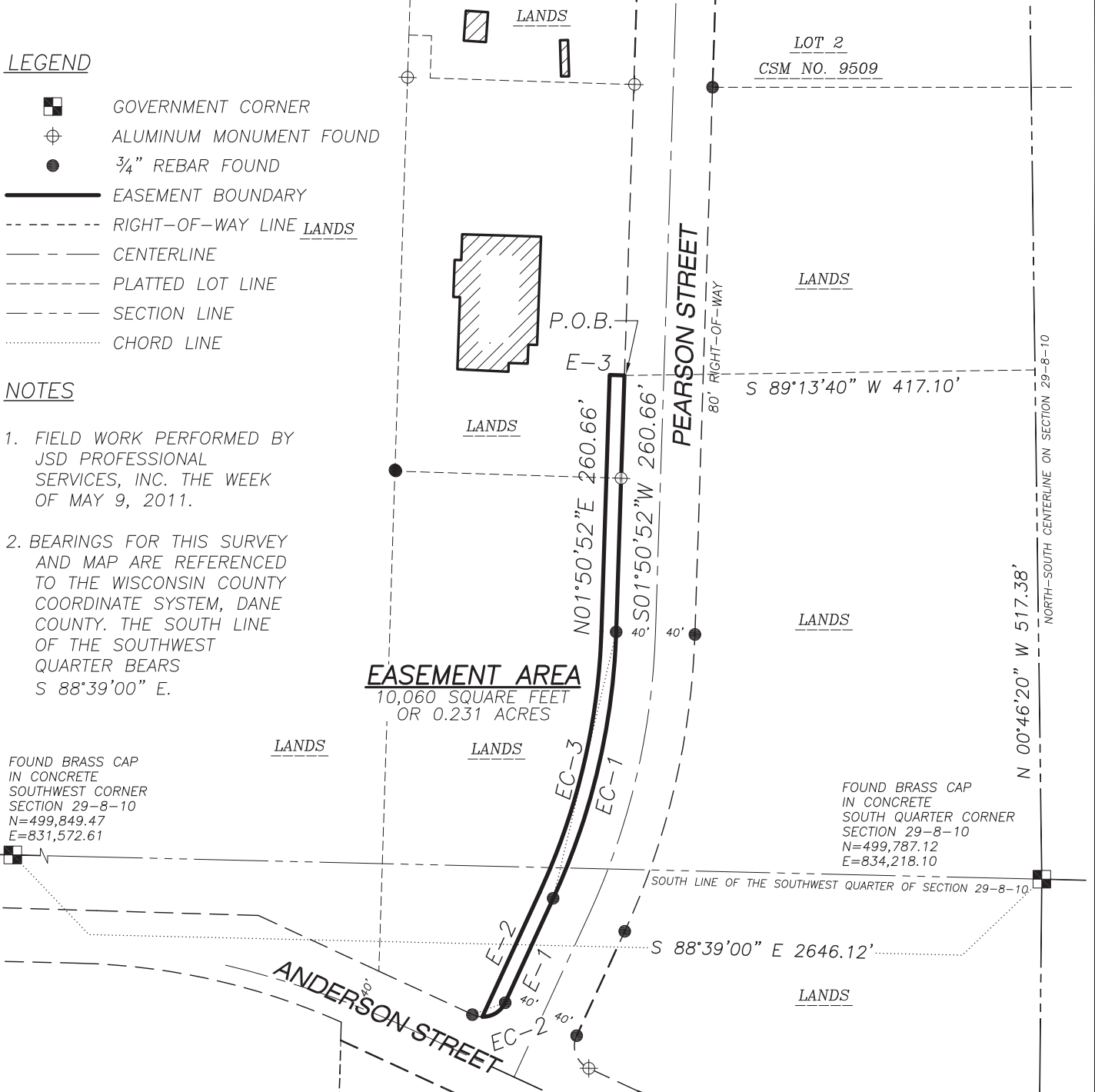
-  GOVERNMENT CORNER
-  ALUMINUM MONUMENT FOUND
-  3/4" REBAR FOUND
-  EASEMENT BOUNDARY
-  RIGHT-OF-WAY LINE LANDS
-  CENTERLINE
-  PLATTED LOT LINE
-  SECTION LINE
-  CHORD LINE

NOTES

1. FIELD WORK PERFORMED BY JSD PROFESSIONAL SERVICES, INC. THE WEEK OF MAY 9, 2011.
2. BEARINGS FOR THIS SURVEY AND MAP ARE REFERENCED TO THE WISCONSIN COUNTY COORDINATE SYSTEM, DANE COUNTY. THE SOUTH LINE OF THE SOUTHWEST QUARTER BEARS S 88°39'00" E.

FOUND BRASS CAP
IN CONCRETE
SOUTHWEST CORNER
SECTION 29-8-10
N=499,849.47
E=831,572.61

FOUND BRASS CAP
IN CONCRETE
SOUTH QUARTER CORNER
SECTION 29-8-10
N=499,787.12
E=834,218.10



CURVE TABLE

CURVE	LENGTH	RADIUS	DELTA	CHORD	CHORD BEARING
EC-1	279.95'	700.00'	22°54'52"	278.09'	S 13°18'05" W
EC-2	28.98'	25.00'	66°25'19"	27.39'	S 57°56'43" W
EC-2	273.95'	685.00'	22°54'52"	272.13'	N 13°18'05" E

LINE TABLE

LINE	BEARING	DISTANCE
E-1	S 24°44'04" W	116.51'
E-2	N 24°44'04" E	139.43'
E-3	S 88°09'23" E	15.00'

PUBLIC SANITARY SEWER EASEMENT EXHIBIT

PART OF THE SOUTHEAST QUARTER OF THE SOUTHWEST QUARTER OF SECTION 29 AND PART OF THE NORTHEAST QUARTER OF THE NORTHWEST QUARTER OF SECTION 32, TOWNSHIP 08 NORTH RANGE 10 EAST, CITY OF MADISON, DANE COUNTY, WISCONSIN.

PREPARED BY:

JSD Professional Services, Inc.
• Engineers • Surveyors • Planners

161 HORIZON DRIVE, SUITE 101
VERONA, WISCONSIN 53593
PHONE: (608)848-5060

PREPARED FOR:

CITY OF MADISON
215 MARTIN LUTHER
KING, JR. BLVD.
MADISON, WI

PROJECT NO: 13-5648

FILE NO: A-302

FIELDBOOK/PG: -

SHEET NO: 1 OF 1

SURVEYED BY: JK

DRAWN BY: JK

CHECKED BY: TJB

APPROVED BY: HPJ



SCALE: 1" = 150'