

3817 MINERAL POINT ROAD  
MADISON, WI 53705-5100  
TEL 608/262.1705  
FAX 608/262.8086  
WWW.UWEX.EDU/WGNHS/

JAMES M. ROBERTSON  
DIRECTOR AND STATE GEOLOGIST

January 13, 2012

Kay Rutledge  
City of Madison Parks Division  
City-County Building, Suite 104  
210 Martin Luther King Jr. Blvd  
Madison, WI 53703

Dear Kay,

This letter describes my request to place two temporary groundwater monitoring wells at Sherman Village Park on Delaware Blvd. These proposed wells are two of about twenty that we are installing in Dane County to monitor the quality of shallow groundwater near public water supply wells. The purpose is to determine if leaking sanitary sewers affect drinking water quality near public water supply wells. The Madison Water Utility is allowing us to sample from their production well for this project. One of the supply wells (Unit Well 13) is just north of Sherman Village Park on Wheeler Road. Water samples collected from the monitoring wells and the Utility's supply wells will be monitored for constituents of sanitary sewer discharge.

We hope to install the temporary monitoring wells late this winter. As shown in Figure 1, wells will be constructed with 2-inch Schedule 80 PVC to depths of about 115 and 225 feet. Each PVC pipe would be protected by a 6-inch diameter lockable steel casing that extends 3 feet above ground. I've attached a photo of a similar well installed by the Water Utility at Sycamore Park. These wells can be an inconvenience when the grass is mowed—we would work with you to site the wells to minimize this concern. We would also restore the turf if there is any disturbance during drilling; this is usually not a concern if the ground is frozen. We plan to sample groundwater from the monitoring wells twice a month for a year. Following the project, in the fall of 2013, we would abandon the wells according to state regulations. These regulations require that well casing pipe be removed to a depth of three feet below ground, and the site would be restored to its initial condition.

I've indicated a general proposed location on the attached map. If City Parks is agreeable to hosting the wells, we would walk the site with you to select a location that is acceptable to you. We would of course contact Driller's Hot Line to ensure that we are sufficiently way from underground utilities.

Thanks for your consideration,

Madeline Gotkowitz  
Hydrogeologist

Figure 1. Construction details for temporary groundwater monitoring wells at Sherman Village Park. Wells operated by the City at Sycamore Park.

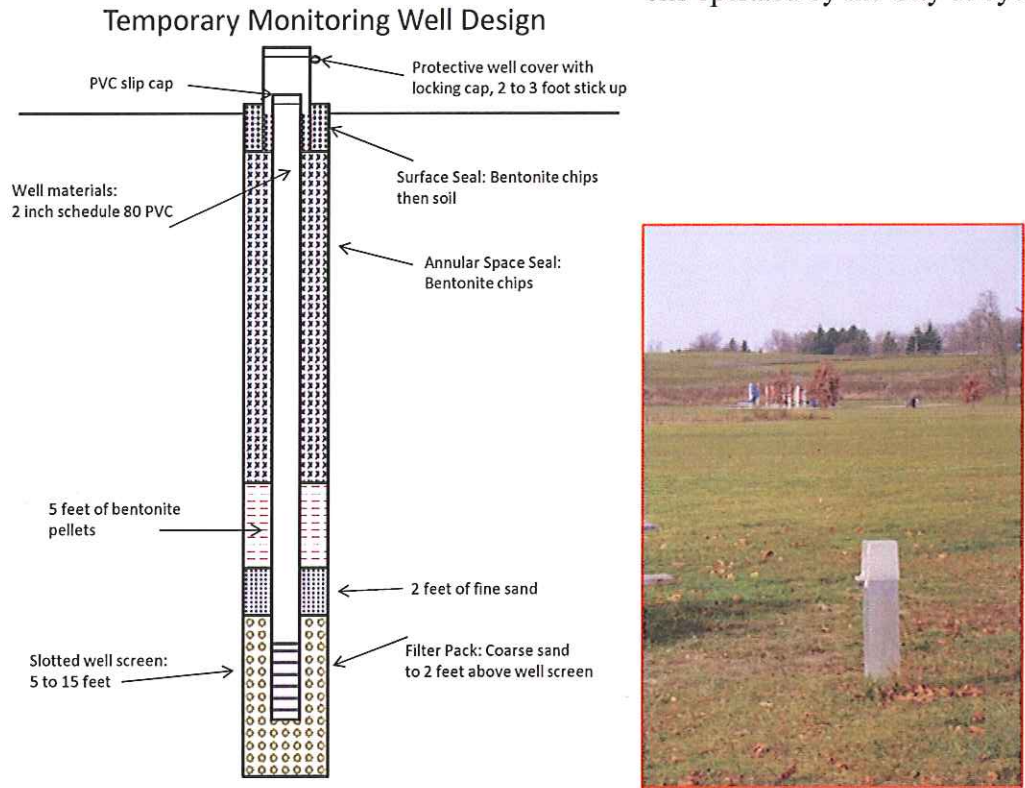
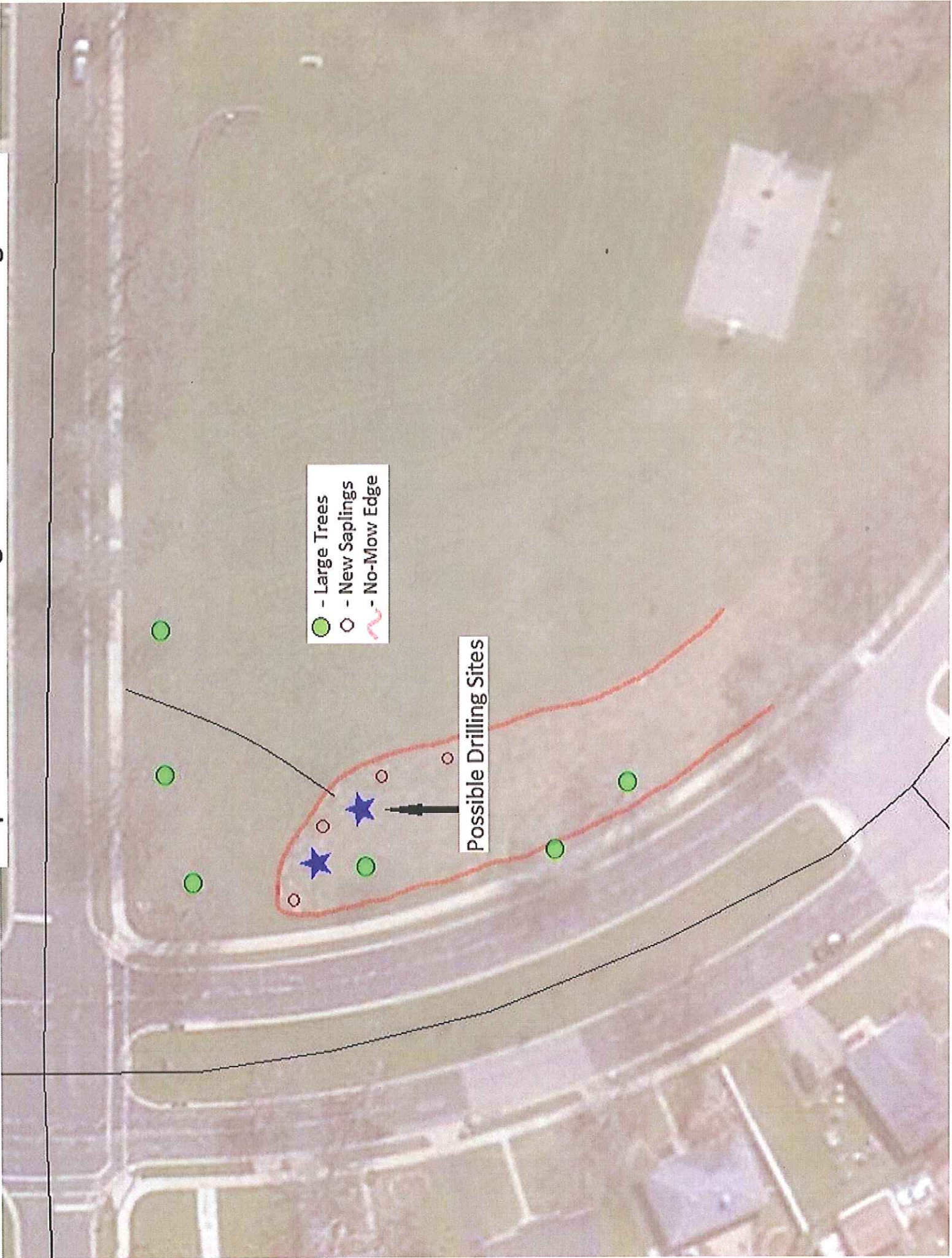


Figure 2. Site map. Red circle shows proposed general location.





- Large Trees
- New Saplings
- No-Mow Edge

Possible Drilling Sites