



Madison, Wisconsin

CITY OF MADISON

CITY ENGINEERING DIVISION

DEPARTMENT OF PUBLIC WORKS

PLAN OF PROPOSED IMPROVEMENT

FELLAND ROAD SANITARY SEWER PHASE 2 AND STORMWATER MANAGEMENT PROJECT

CITY PROJECT NO. 53W0370

CONTRACT # 5978

INDEX OF SHEETS

SHEET NO.	TITLE
SHEET NO. 1	TITLE
SHEET NO. 2	STAKING ALIGNMENT
SHEET NO. 3-8	PLAN & PROFILES 'B' ALIGNMENT
SHEET NO. 9-13	PLAN & PROFILE 'F' ALIGNMENT
SHEET NO. 14	EROSION CONTROL/PROJECT OVERVIEW
SHEET NO. 15	TRAFFIC CONTROL PLAN
SHEET NO. 16	DETAILS
SHEET NO. 17-18	CROSS SECTIONS

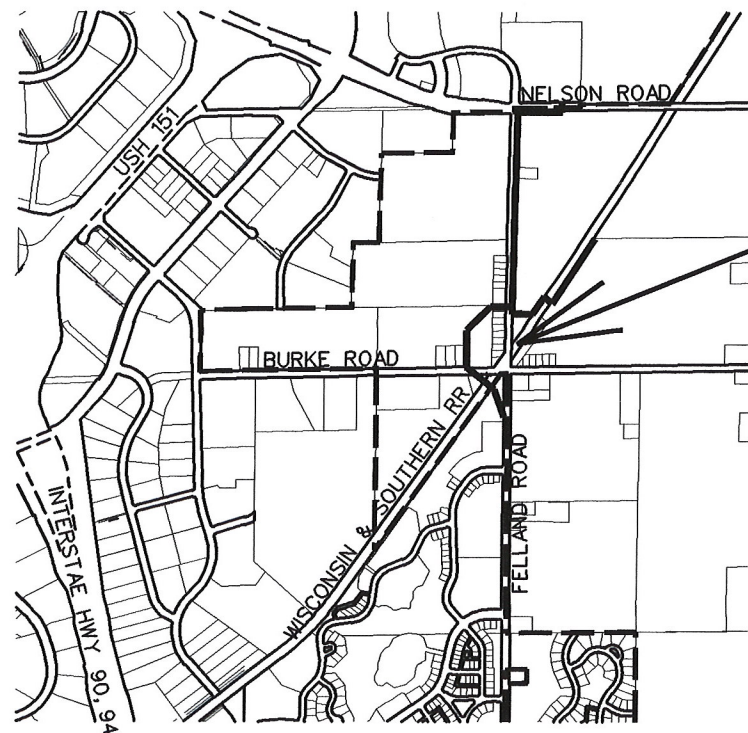
CONVENTIONAL SIGNS

FIELD VERIFY ALL UTILITY LOCATIONS

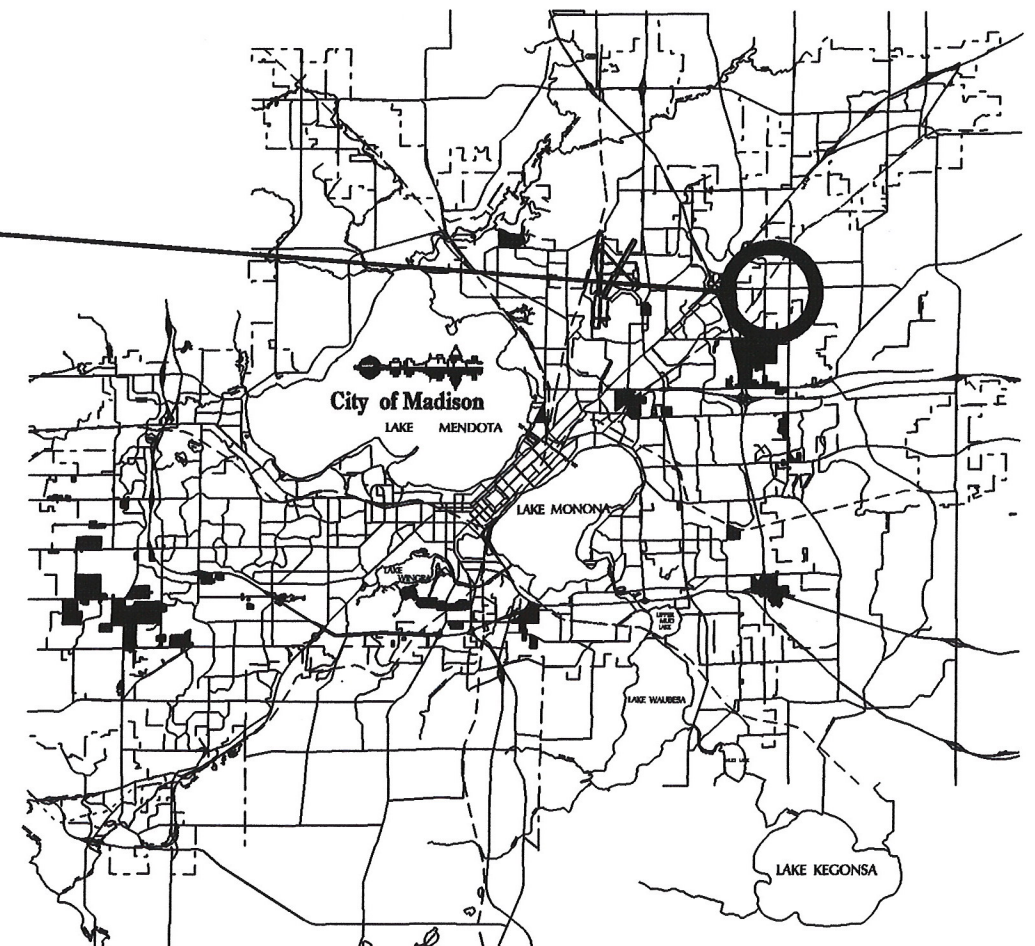
TELEPHONE	— T —
GAS	— G —
CABLE TV	— CATV —
STORM SEWER	— ST —
SANITARY SEWER	— SAN —
WATER	— W —
UNDERGROUND ELECTRIC	— UE —
OVERHEAD ELECTRIC	— OH —
POWER POLE	— □ —
FIBER OPTIC	— FO —
COMBUSTIBLE FLUIDS	— ☀ —

EARTHWORK SUMMARY:

EXCAVATION CUT (MEASURED PLAN QUANTITY)..... 3,000 C.Y.
 NET FILL BORROW QUANTITY..... 0 C.Y.



PROJECT LOCATION



PUBLIC IMPROVEMENT PROJECT APPROVED

BY THE COMMON COUNCIL OF MADISON, WISCONSIN

PUBLIC IMPROVEMENT DESIGN APPROVED BY:

City Engineer _____ Date _____

SANITARY SEWER DESIGNED BY:



AYRES ASSOCIATES

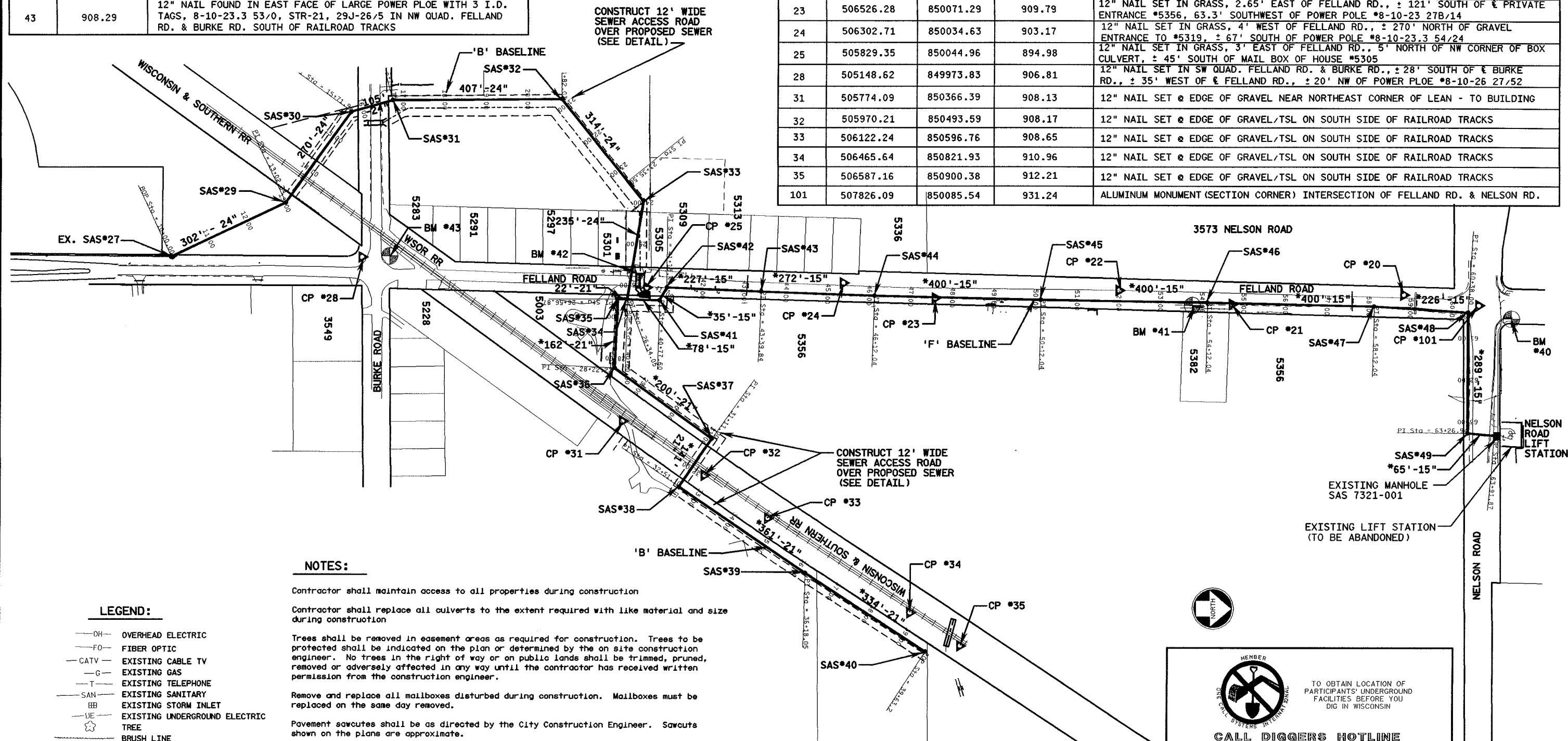
PLOT SCALE: _____ PLOT NAME: _____ REV. DATE: _____ ORIGINATOR: _____

BENCHMARK TABLE

BM#	ELEVATION	DESCRIPTION
40	932.98	TOP NUT FIRE HYDRANT IN NE QUAD. FELLAND RD. & NELSON RD.
41	923.06	TOP OF SOUTH END OF 16" CMP @ PUNCH HOLE
42	894.31	CHISELED "+" ON ABUTMENT FACE
43	908.29	12" NAIL FOUND IN EAST FACE OF LARGE POWER PLOE WITH 3 I.D. TAGS, 8-10-23.3 53/0, STR-21, 29J-26/5 IN NW QUAD. FELLAND RD. & BURKE RD. SOUTH OF RAILROAD TRACKS

SURVEY CONTROL TABLE

CP#	NORTHING	EASTING	ELEVATION	DESCRIPTION
20	507649.02	850060.90	927.69	12" NAIL SET ± 25' NORTH OF E GRAVEL ENTRANCE ON WEST SIDE FELLAND RD., ± 156' SOUTH OF E NELSON RD. IN WEST EDGE OF GRAVEL
21	507238.24	850083.01	925.54	12" NAIL SET 2.2' EAST OF FELLAND RD., 13' SOUTH OF STOP AHEAD SIGN, 81' NORTH OF E PRIVATE ENTRANCE #5382
22	506969.20	850048.26	918.46	12" NAIL SET IN GRASS/GRAVEL, 3.35' WEST OF FELLAND RD., 177' SOUTH OF E PRIVATE ENTRANCE #5382
23	506526.28	850071.29	909.79	12" NAIL SET IN GRASS, 2.65' EAST OF FELLAND RD., ± 121' SOUTH OF E PRIVATE ENTRANCE #5356, 63.3' SOUTHWEST OF POWER POLE #8-10-23 27B/14
24	506302.71	850034.63	903.17	12" NAIL SET IN GRASS, 4' WEST OF FELLAND RD., ± 270' NORTH OF GRAVEL ENTRANCE TO #5319, ± 67' SOUTH OF POWER POLE #8-10-23.3 54/24
25	505829.35	850044.96	894.98	12" NAIL SET IN GRASS, 3' EAST OF FELLAND RD., 5' NORTH OF NW CORNER OF BOX CULVERT, ± 45' SOUTH OF MAIL BOX OF HOUSE #5305
28	505148.62	849973.83	906.81	12" NAIL SET IN SW QUAD. FELLAND RD. & BURKE RD., ± 28' SOUTH OF E BURKE RD., ± 35' WEST OF E FELLAND RD., ± 20' NW OF POWER PLOE #8-10-26 27/52
31	505774.09	850366.39	908.13	12" NAIL SET @ EDGE OF GRAVEL NEAR NORTHEAST CORNER OF LEAN - TO BUILDING
32	505970.21	850493.59	908.17	12" NAIL SET @ EDGE OF GRAVEL/TSL ON SOUTH SIDE OF RAILROAD TRACKS
33	506122.24	850596.76	908.65	12" NAIL SET @ EDGE OF GRAVEL/TSL ON SOUTH SIDE OF RAILROAD TRACKS
34	506465.64	850821.93	910.96	12" NAIL SET @ EDGE OF GRAVEL/TSL ON SOUTH SIDE OF RAILROAD TRACKS
35	506587.16	850900.38	912.21	12" NAIL SET @ EDGE OF GRAVEL/TSL ON SOUTH SIDE OF RAILROAD TRACKS
101	507826.09	850085.54	931.24	ALUMINUM MONUMENT (SECTION CORNER) INTERSECTION OF FELLAND RD. & NELSON RD.




NOTES:

- Contractor shall maintain access to all properties during construction
- Contractor shall replace all culverts to the extent required with like material and size during construction
- Trees shall be removed in easement areas as required for construction. Trees to be protected shall be indicated on the plan or determined by the on site construction engineer. No trees in the right of way or on public lands shall be trimmed, pruned, removed or adversely affected in any way until the contractor has received written permission from the construction engineer.
- Remove and replace all mailboxes disturbed during construction. Mailboxes must be replaced on the same day removed.
- Pavement sawcuts shall be as directed by the City Construction Engineer. Sawcuts shown on the plans are approximate.
- Private driveways & driveway culverts shall be restored to existing condition with like material, thickness and dimensions.
- Any information shown on this plan that is not part of the construction is preliminary and not intended for construction
- There may be existing utilities or other features which are either not shown or shown incorrectly on this plan. It is the responsibility of the contractor to locate and identify all utilities and topography which may affect the construction of the proposed improvements.
- Pavement cross slopes shall be 2%, shoulders and ditches shall be restored to existing conditions.

LEGEND:

- OH - OVERHEAD ELECTRIC
- FO - FIBER OPTIC
- CATV - EXISTING CABLE TV
- G - EXISTING GAS
- T - EXISTING TELEPHONE
- SAN - EXISTING SANITARY
- BB - EXISTING STORM INLET
- UE - EXISTING UNDERGROUND ELECTRIC
- TREE
- BRUSH LINE
- FENCE
- POWER POLE
- FIRE HYDRANT
- WATER VALVE
- IRON PIPE
- SIGN
- SILT FENCE
- SAWCUT
- CONTROL POINT
- BENCHMARK



 TO OBTAIN LOCATION OF PARTICIPANTS' UNDERGROUND FACILITIES BEFORE YOU DIG IN WISCONSIN
CALL DIGGERS HOTLINE
1-800-242-8511
 TOLL FREE
FAX A LOCATE 1-800-338-3860
TDD (FOR HEARING IMPAIRED) 1-800-542-2289
WIS. STATUTE 182.0175 (1974) REQUIRES MIN. OF 3 WORK DAYS NOTICE BEFORE YOU EXCAVATE.

WHERE NOTED WITH A *, PIPE SHALL CONFORM TO ASTM P3034 SDR 26 OR EQUIVALENT

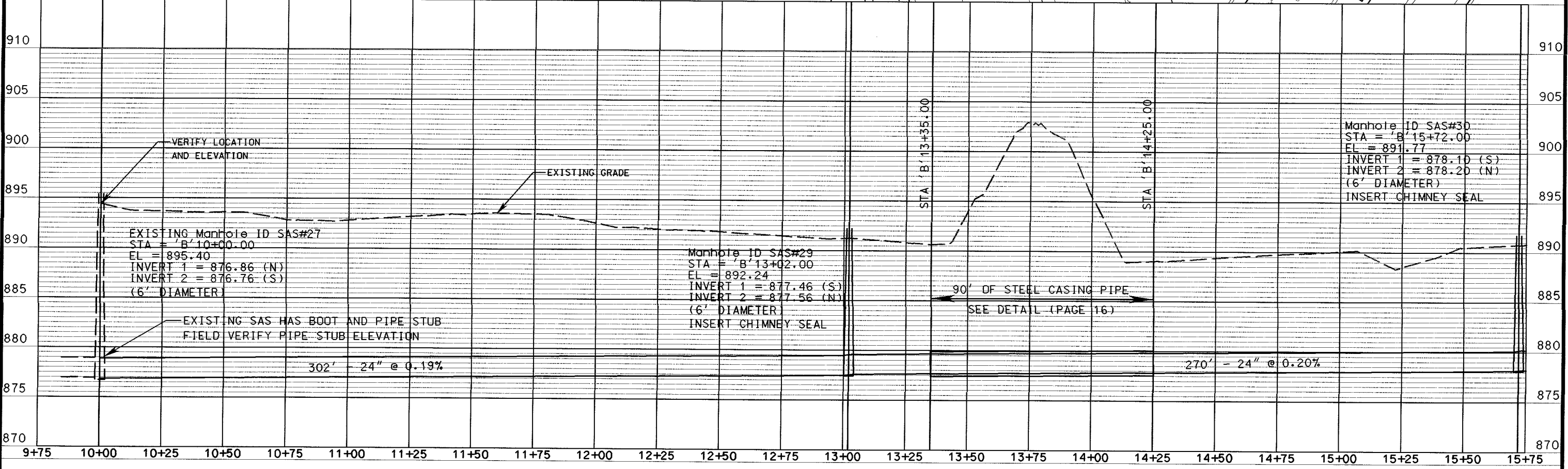
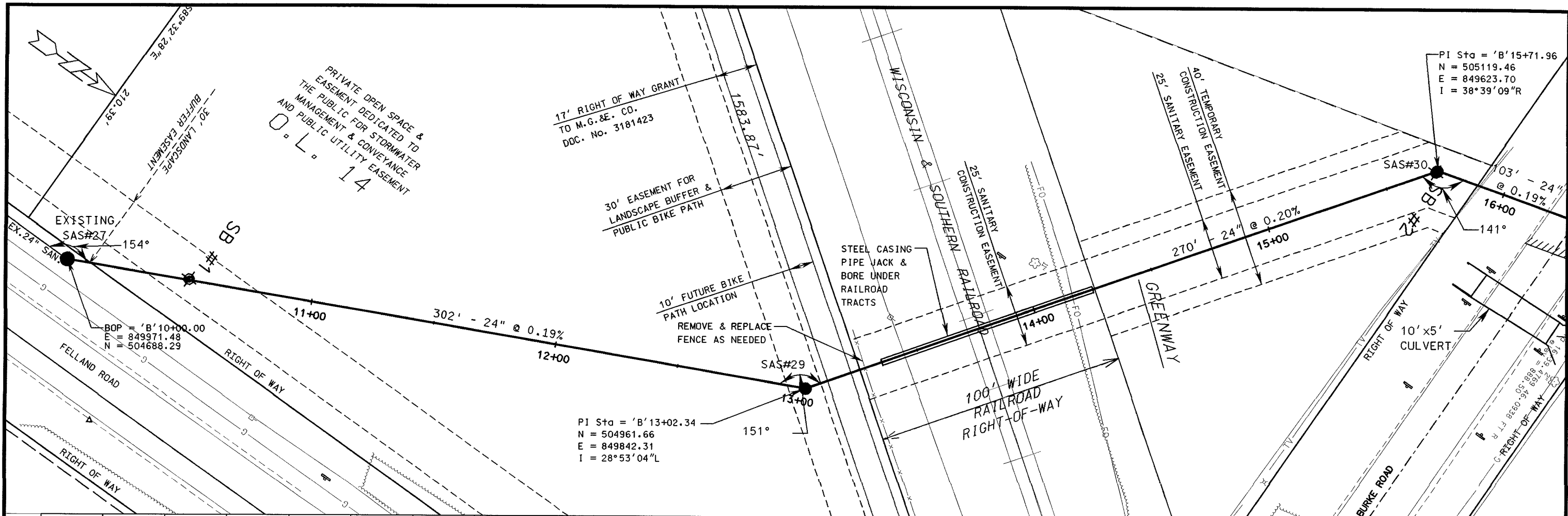
1/18/2009 #PENS m:\DGN\52054000\FINAL PLANS TO CITY 01-15-09\SHEET2.dgn

DR. BY JPL/WH	BOOK NO.		
CHK. BY JPL	JOB NO. 52-0540.00	01-15-09	FINAL PLAN REVISIONS
DATE FEB 2008	SCALE NOT TO SCALE	12-12-08	FINAL PLANS
		NO.	DATE
		REVISION	NO.
		REVISION	DATE
		REVISION	REVISION

CITY OF MADISON
FELLAND ROAD SANITARY SEWER
PHASE 2; MADISON, WISCONSIN
PROJECT No. 53W0370



STAKING AND ALIGNMENT



12/15/2008
 \$PEN\$
 m:\dgn\52054000\FINAL PLANS TO CITY 12-12-08\SHEET3.dgn

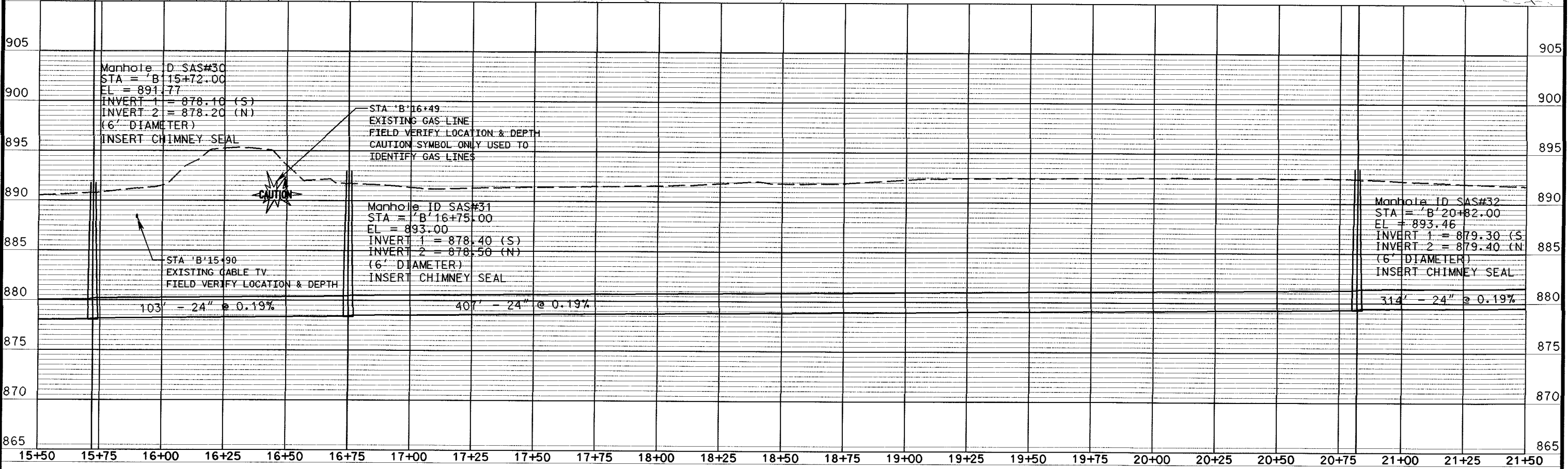
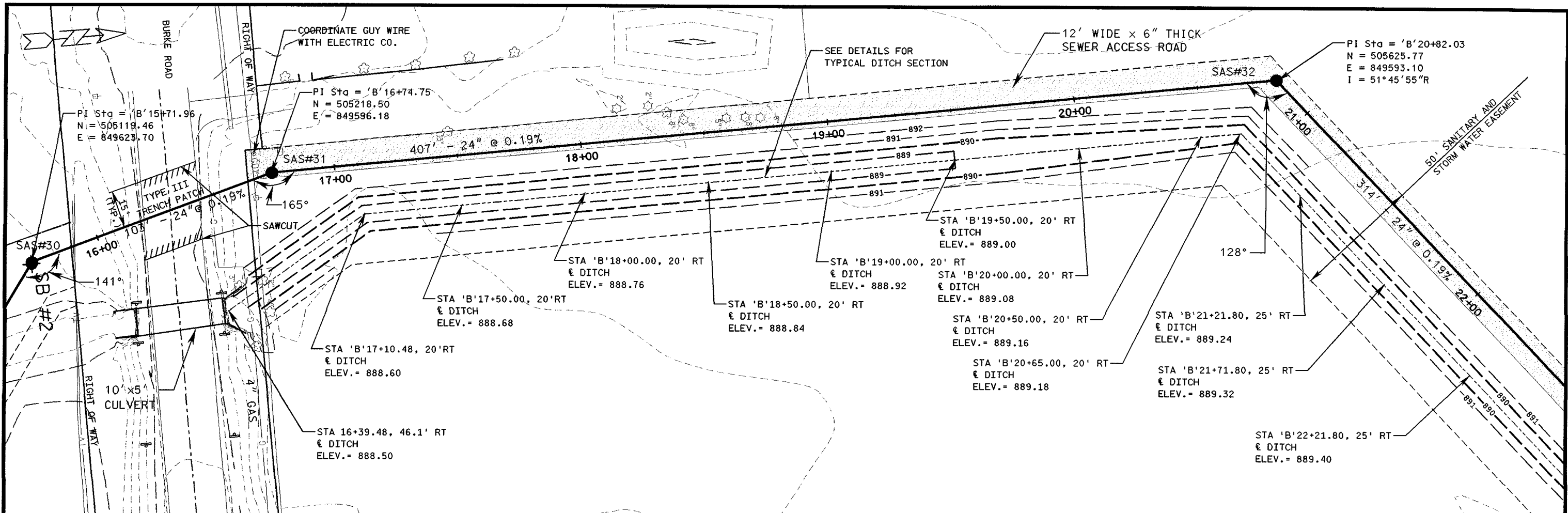
DR. BY JPL/VAH	BOOK NO.				
CHK. BY JPL	JOB NO. 52-0540.00	12-12-08	FINAL PLANS		
DATE FEB 2008	SCALE	NO.	DATE	REVISION	NO. DATE REVISION

CITY OF MADISON
 FELLAND ROAD SANITARY SEWER
 PHASE 2; MADISON, WISCONSIN
 PROJECT No.53W0370



PLAN AND PROFILE - STA 'B'10+00 - STA 'B'15+75
3

DRAWING NO.
3
 SHEET NO. 3/18



12/15/2008
 JPL:WAH
 JPL
 FEB 2008
 m:\DGN\B2054000\FINAL PLANS TO CITY 12-12-08\SHEET 4.dgn

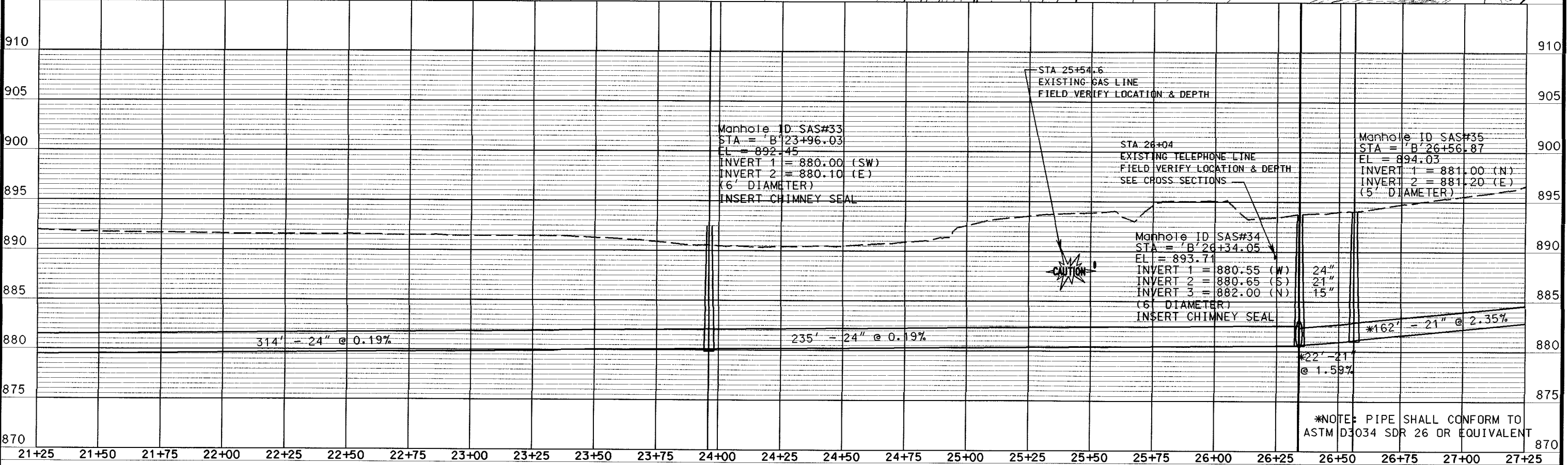
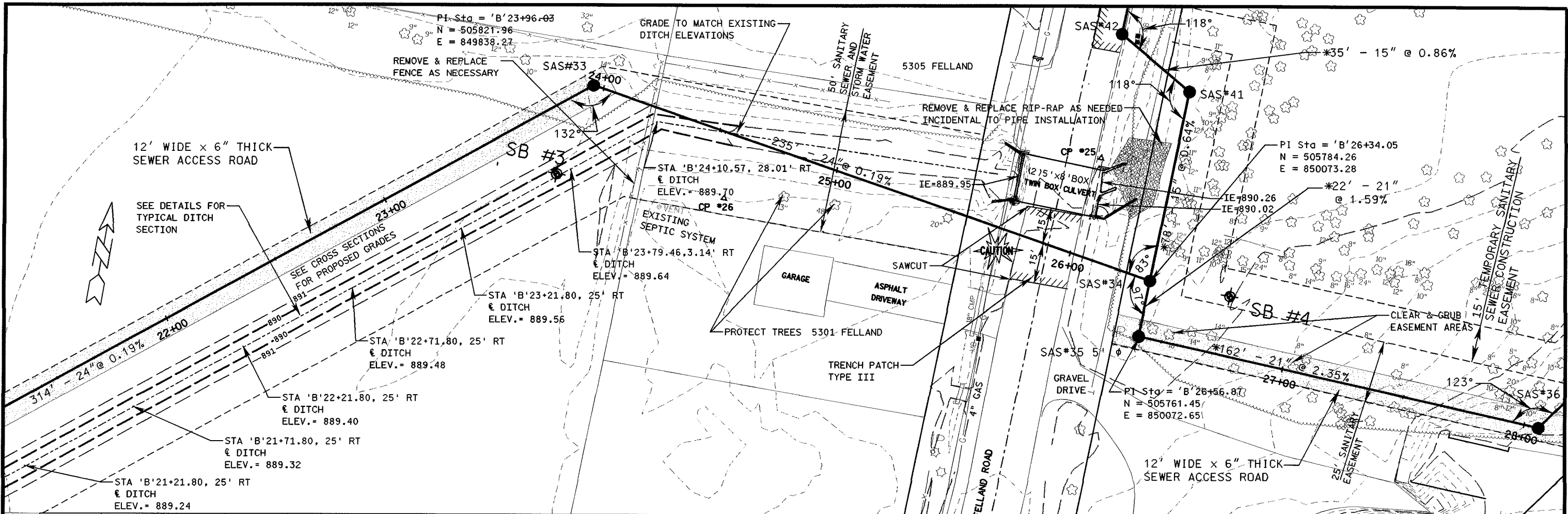
DR. BY JPL:WAH	BOOK NO.				
CHK. BY JPL	JOB NO. 52-0540.00				
DATE FEB 2008	SCALE	NO.	DATE	REVISION	NO.

CITY OF MADISON
 FELLAND ROAD SANITARY SEWER
 PHASE 2; MADISON, WISCONSIN
 PROJECT No.53W0370



DRAWING NO.
4
SHEET NO. 4/18

PLAN AND PROFILE - STA 'B'15+50 - STA 'B'21+50



DR. BY JPL/VAH	BOOK NO.
CHK. BY JPL	JOB NO. 52-0540.00
DATE FEB 2008	SCALE

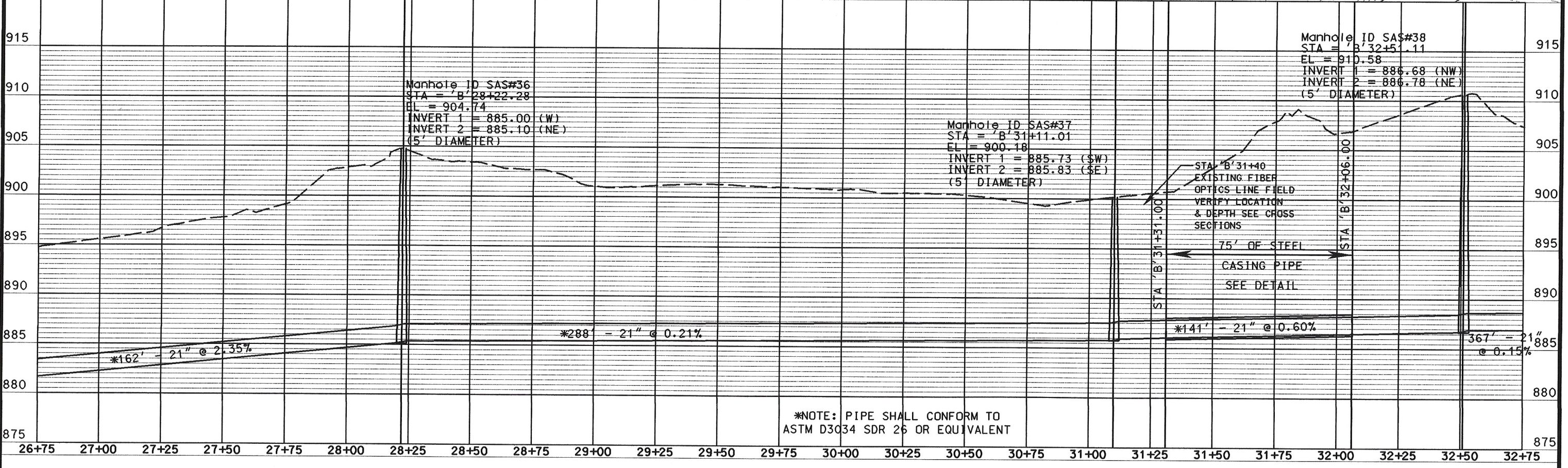
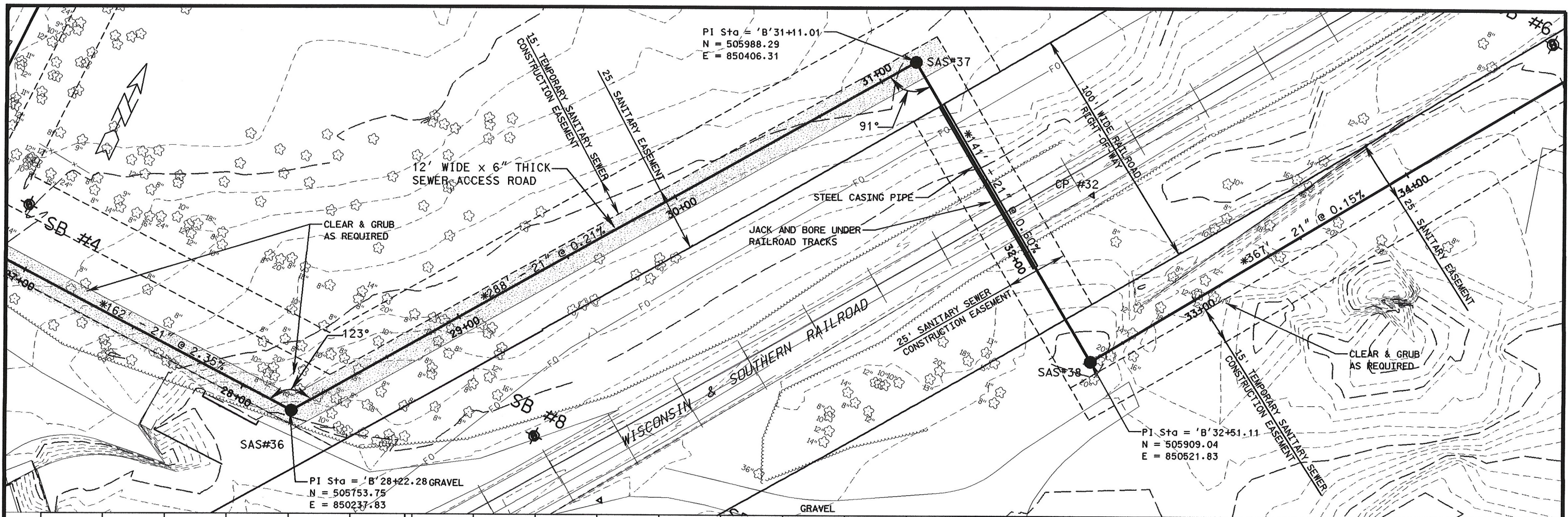
NO.	DATE	REVISION	NO.	DATE	REVISION
1	12-12-08	FINAL PLANS			

CITY OF MADISON
 FELLAND ROAD SANITARY SEWER
 PHASE 2; MADISON, WISCONSIN
 PROJECT No. 53W0370



PLAN AND PROFILE STA 'B'21+25 - STA 'B'27+25 DRAWING NO. 5 SHEET NO. 5/18

12/15/2008
 BPENE
 m:\DGN\92054000\FINAL PLANS TO CITY_12-12-08\SHEETS.dgn



1/16/2009
SPENS
M:\DGN\52054000\FINAL PLANS TO CITY 01-15-09\SHEET6.dgn

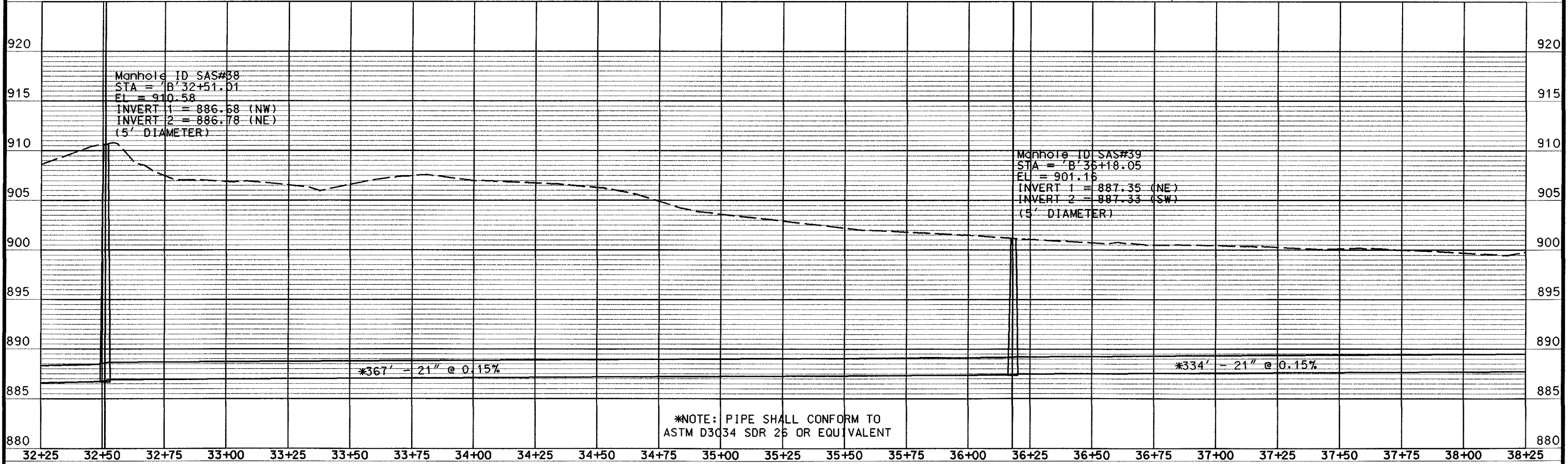
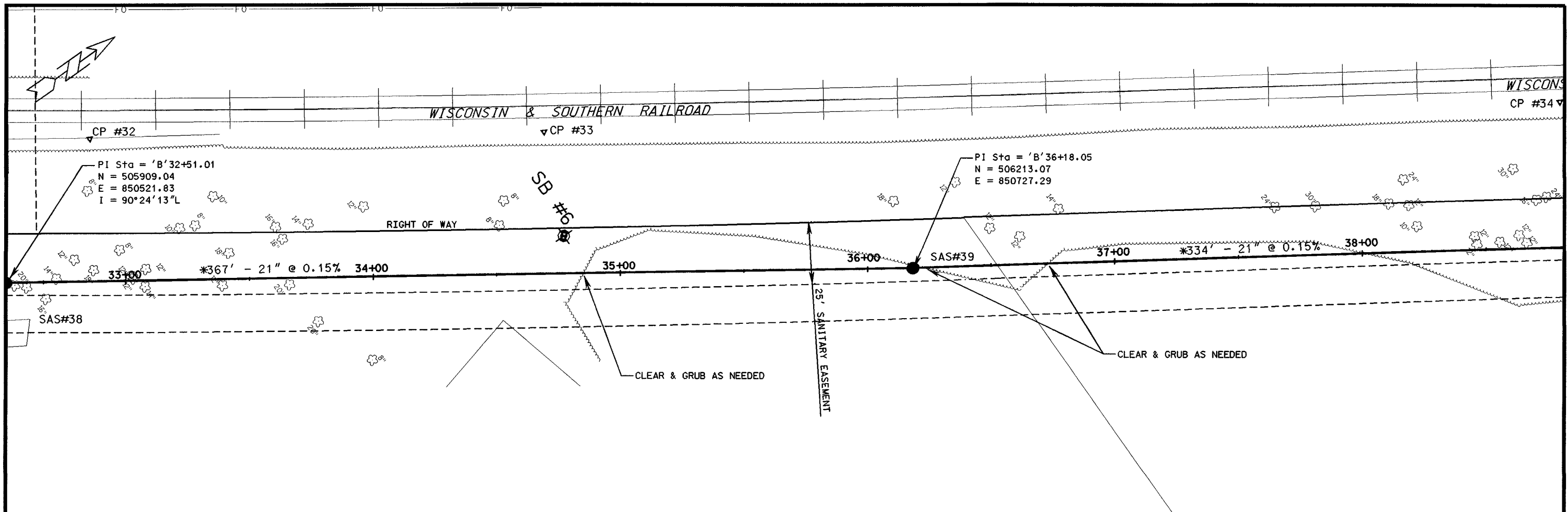
DR. BY JPL/VAH	BOOK NO.	01-15-09	FINAL PLAN REVISIONS
CHK. BY JPL	JOB NO. 52-0540.00	12-12-08	FINAL PLANS
DATE FEB 2008	SCALE	NO.	DATE
		REVISION	NO.
			DATE
			REVISION

CITY OF MADISON
FELLAND ROAD SANITARY SEWER
PHASE 2; MADISON, WISCONSIN
PROJECT No.53W0370



PLAN AND PROFILE - STA 'B'26+75 - STA 'B'32+75

DRAWING NO.
6
SHEET NO. 6/18



*NOTE: PIPE SHALL CONFORM TO ASTM D3034 SDR 26 OR EQUIVALENT

1/18/2008
#PENS
m:\ADGN\52054000\FINAL PLANS TO CITY 01-15-09\SHEET7.dgn

DR. BY JPL/VAH	BOOK NO.	01-15-09	FINAL PLAN REVISIONS
CHK. BY JPL	JOB NO. 52-0540.00	12-12-08	FINAL PLANS
DATE FEB 2008	SCALE	NO.	DATE
		REVISION	REVISION

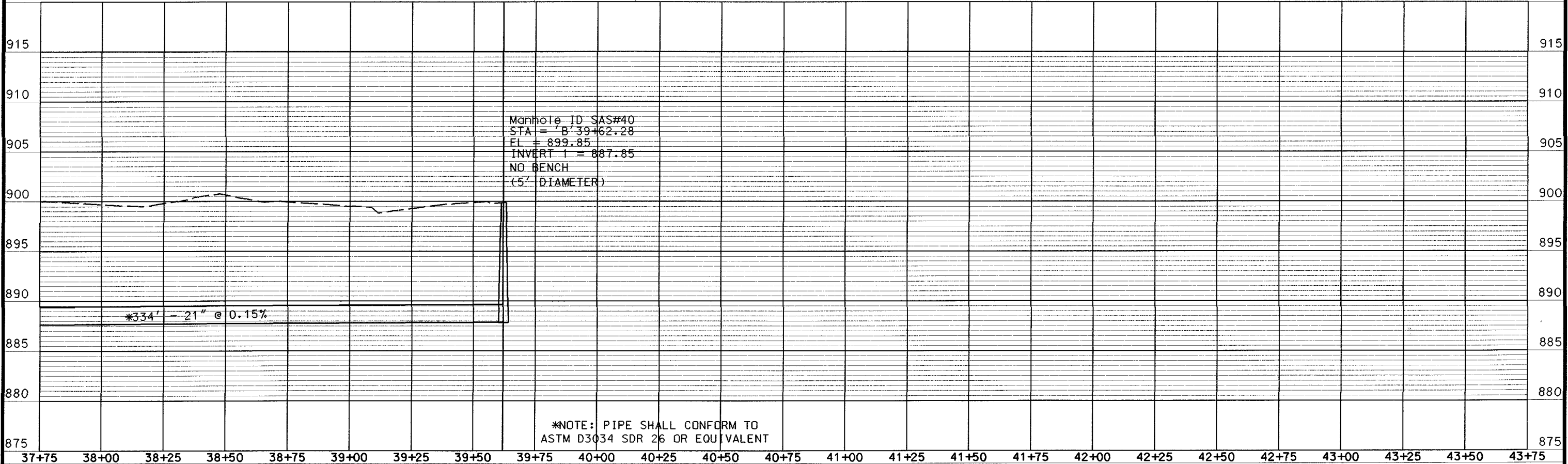
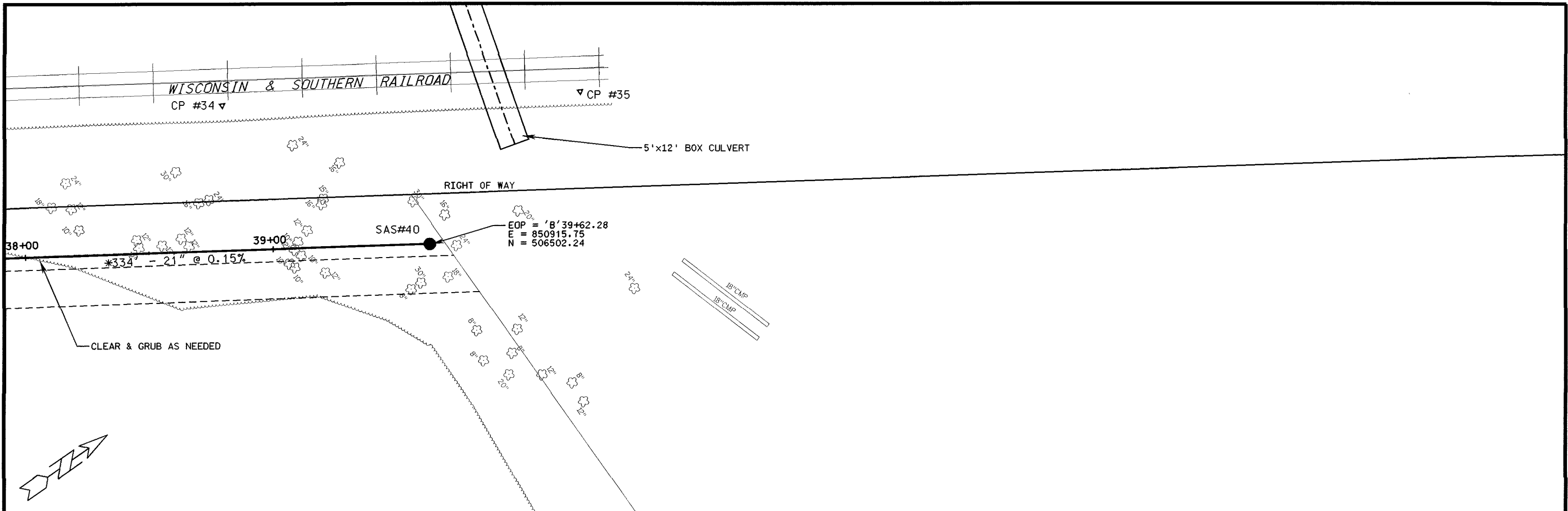
CITY OF MADISON
FELLAND ROAD SANITARY SEWER
PHASE 2; MADISON, WISCONSIN
PROJECT No. 53W0370



PLAN AND PROFILE - STA 'B'32+25 - STA 'B'38+25

DRAWING REDUCED TO ONE-HALF ORIGINAL SCALE

DRAWING NO.
7
SHEET NO. 7/18



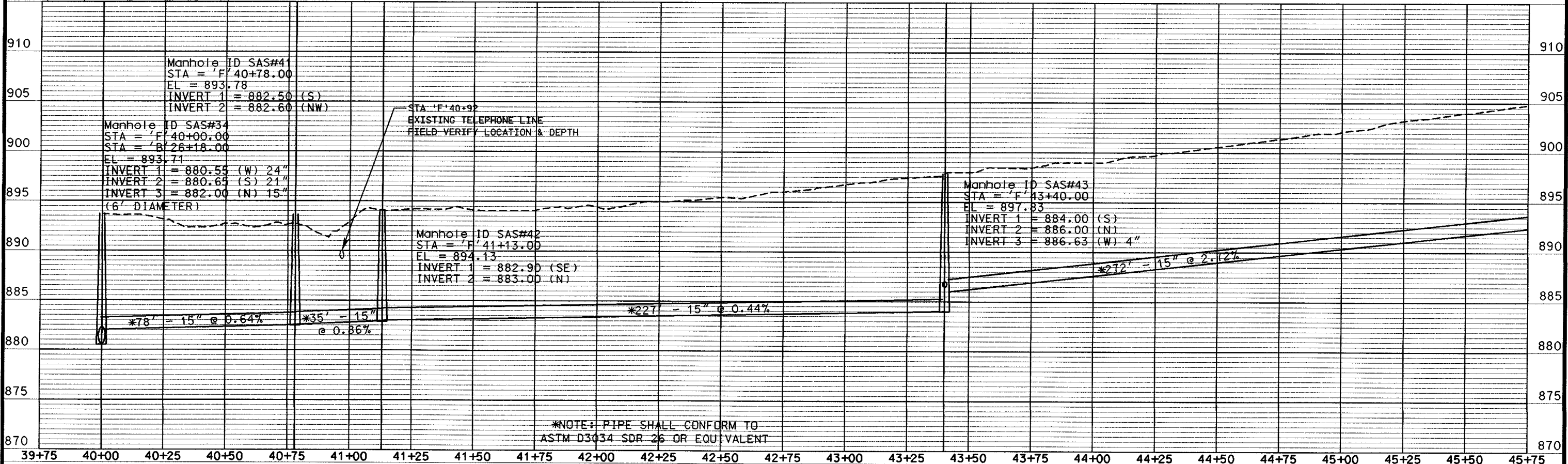
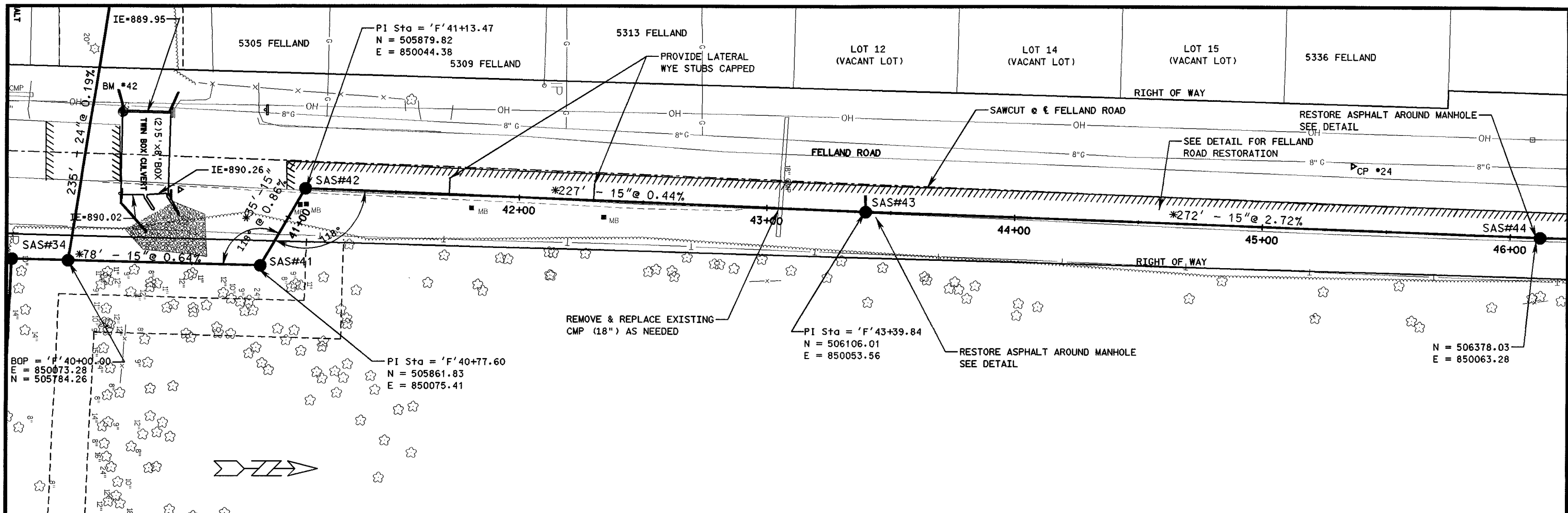
12/15/2008
R:\DGN\52054000\FINAL PLANS TO CITY 12-12-08\SHEETS.dgn

DR. BY JPL/VAH	BOOK NO.				
CHK. BY JPL	JOB NO. 52-0540.00	12-12-08	FINAL PLANS		
DATE FEB 2008	SCALE	NO.	DATE	REVISION	NO. DATE REVISION

CITY OF MADISON
FELLAND ROAD SANITARY SEWER
PHASE 2; MADISON, WISCONSIN
PROJECT No. 53W0370



PLAN AND PROFILE - STA 'B'37+75 - STA 'B'40+00	DRAWING NO. 8
	SHEET NO. 8/18



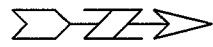
1/16/2009
 SPENS
 MNDGN\52054000\FINAL PLANS TO CITY 01-15-09\SHEETS.dgn

DR. BY JPL/MAH	BOOK NO.	01-15-09	FINAL PLAN REVISIONS
CHK. BY JPL	JOB NO. 52-0540.00	12-12-08	FINAL PLANS
DATE FEB 2008	SCALE	NO.	DATE
		REVISION	NO.
			DATE
			REVISION

CITY OF MADISON
 FELLAND ROAD SANITARY SEWER
 PHASE 2: MADISON, WISCONSIN
 PROJECT No. 53W0370



PLAN AND PROFILE - STA 'F'40+00 - STA 'F'45+75
 DRAWING NO. **9**
 SHEET NO. 9/18



5336 FELLAND RD.

3573 NELSON RD.

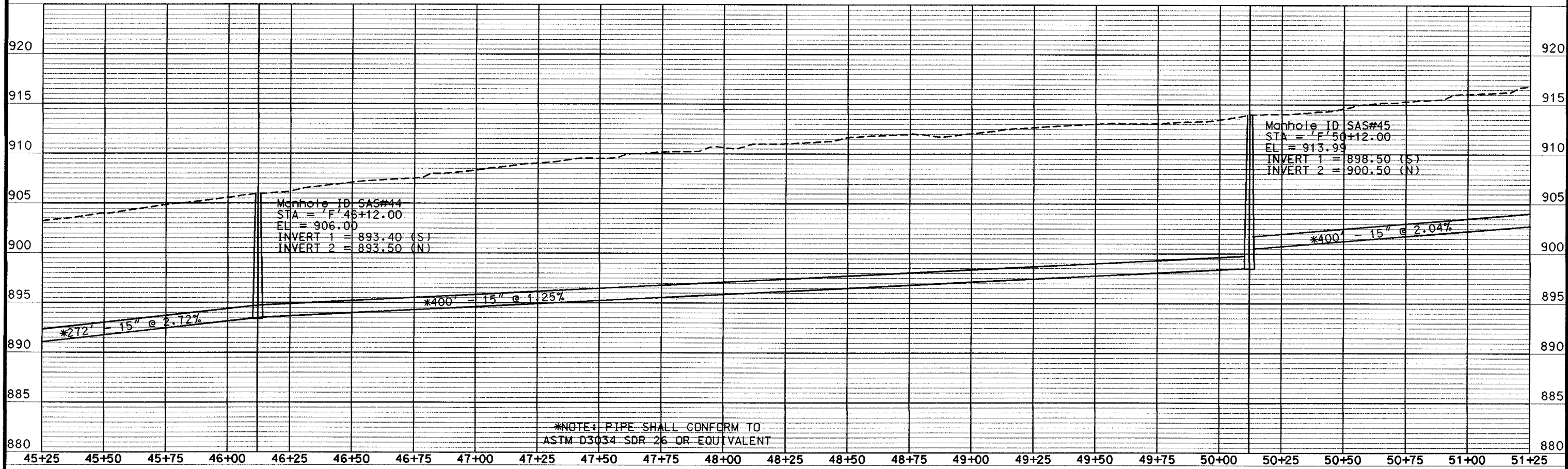
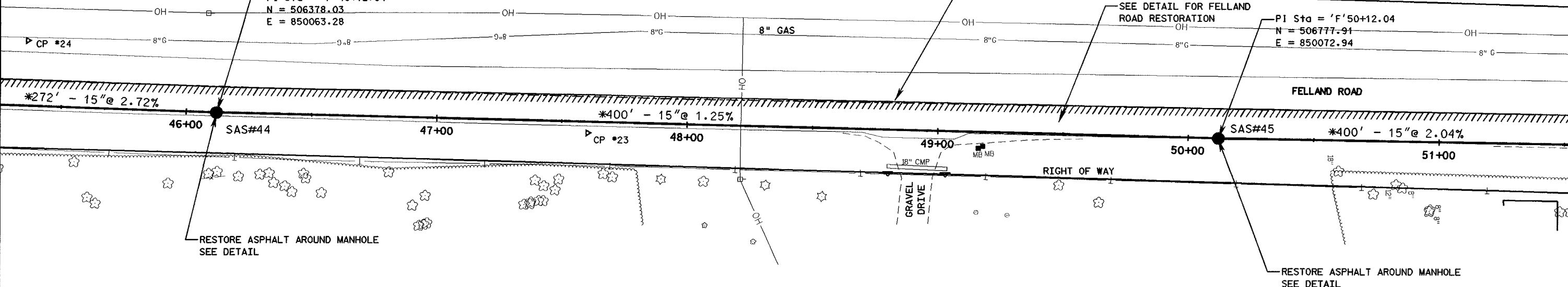
RIGHT OF WAY

SAWCUT @ FELLAND ROAD

SEE DETAIL FOR FELLAND ROAD RESTORATION

PI Sta = 'F'50+12.04
N = 506777-91
E = 850072.94

PI Sta = 'F'46+12.04
N = 506378.03
E = 850063.28



1/16/2009
SPENS
M:\DGN\52054000\FINAL PLANS TO CITY 01-15-09\SHEET10.dgn

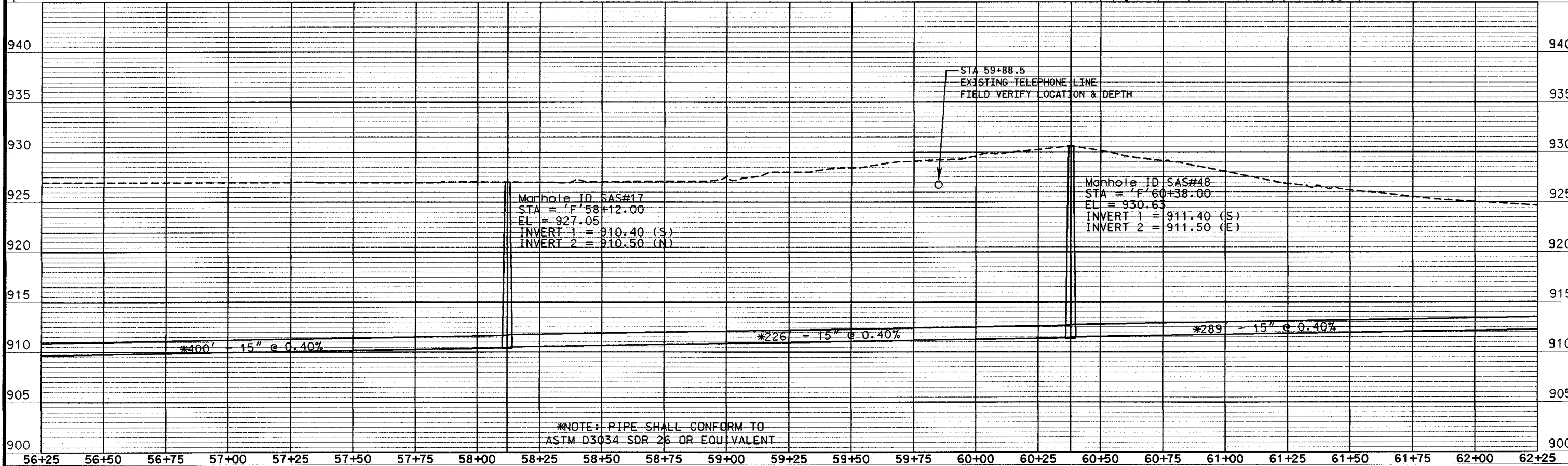
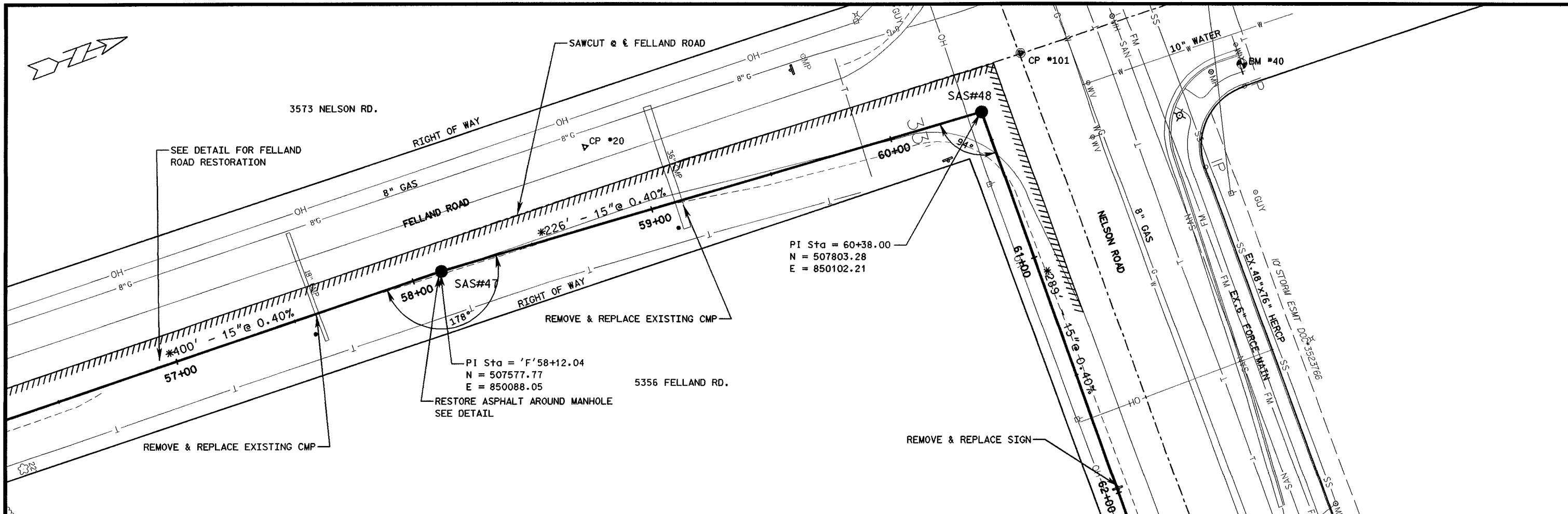
DR. BY JPL/VAH	BOOK NO.				
CHK. BY JPL	JOB NO. 52-0540.00	01-15-09	FINAL PLAN REVISIONS		
DATE FEB 2008	SCALE	12-12-08	FINAL PLANS		
		NO.	DATE	REVISION	

CITY OF MADISON
FELLAND ROAD SANITARY SEWER
PHASE 2; MADISON, WISCONSIN
PROJECT No. 53W0370



PLAN AND PROFILE - STA 'F'45+25 - STA 'F'51+25

DRAWING NO.
10
SHEET NO. 10/18



1/16/2009
 SPENS
 M:\DGN\52954\00\FINAL PLANS TO CITY 01-15-09\SHEET12.dgn

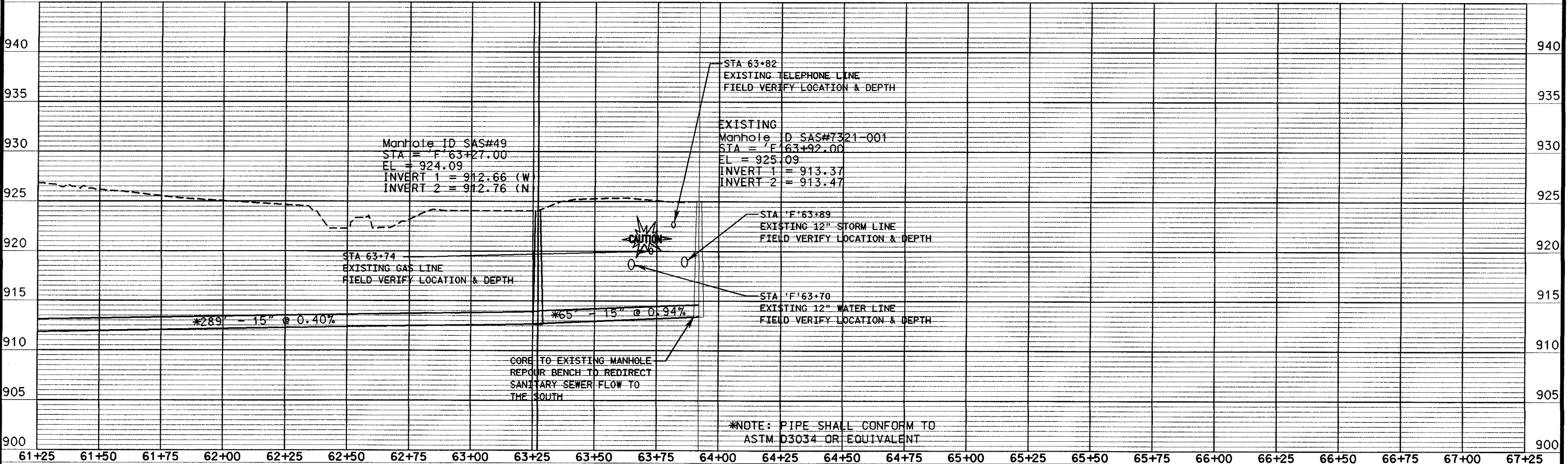
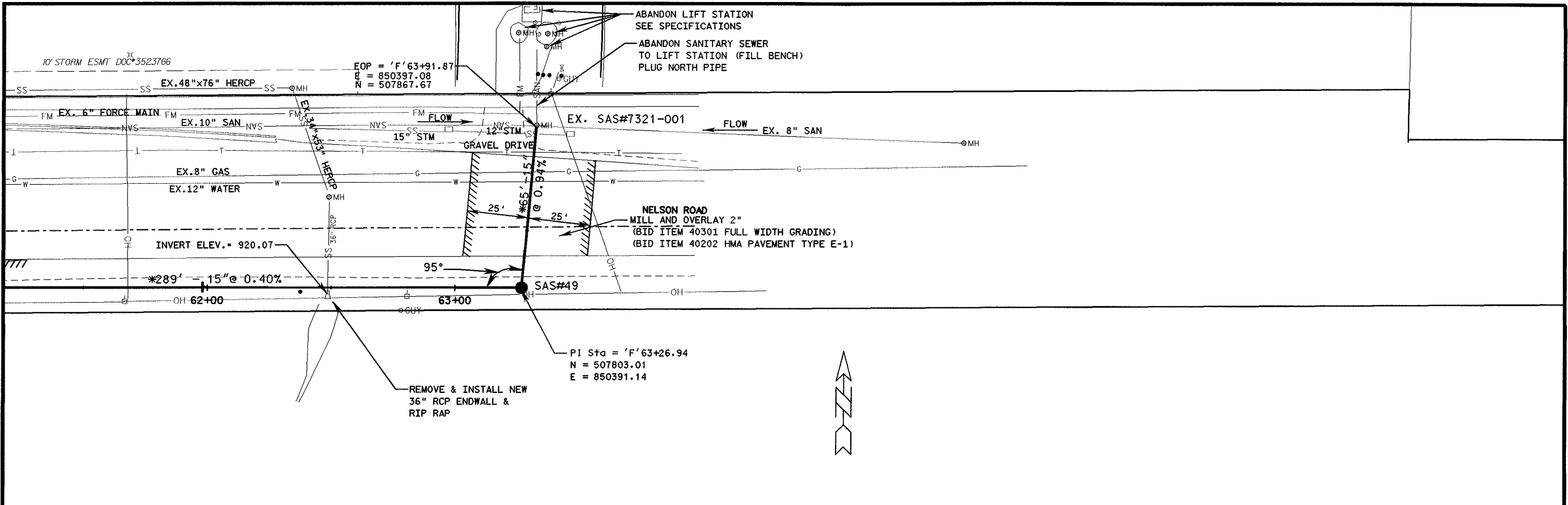
DR. BY JPL/VAH	BOOK NO.				
CHK. BY JPL	JOB NO. 52-0540.00	01-15-09	FINAL PLAN REVISIONS		
DATE FEB 2008	SCALE	12-12-08	FINAL PLANS		
		NO.	DATE	REVISION	

CITY OF MADISON
 FELLAND ROAD SANITARY SEWER
 PHASE 2; MADISON, WISCONSIN
 PROJECT No. 53W0370



PLAN AND PROFILE - STA 'F'56+25 - STA 'F'62+25

DRAWING NO.
12
 SHEET NO. 12/18



1/16/2009
 8:16:56
 M:\DGN\20084000\FINAL PLANS TO CITY 01-15-09\Sheet13.dgn

DR. BY JPL/VAH	BOOK NO.		
CHK. BY JPL	JOB NO. 52-0540.00	01-15-09	FINAL PLAN REVISIONS
DATE FEB 2008	SCALE	12-12-08	FINAL PLANS
		NO.	DATE
		REVISION	REVISION

CITY OF MADISON
 FELLAND ROAD SANITARY SEWER
 PHASE 2; MADISON, WISCONSIN
 PROJECT No. 53W0370



PLAN AND PROFILE - STA 'F'61+25 - STA 'F'64+00 DRAWING NO. 13 SHEET NO. 13/18



TO OBTAIN LOCATION OF PARTICIPANTS' UNDERGROUND FACILITIES BEFORE YOU DIG IN WISCONSIN

CALL DIGGERS HOTLINE

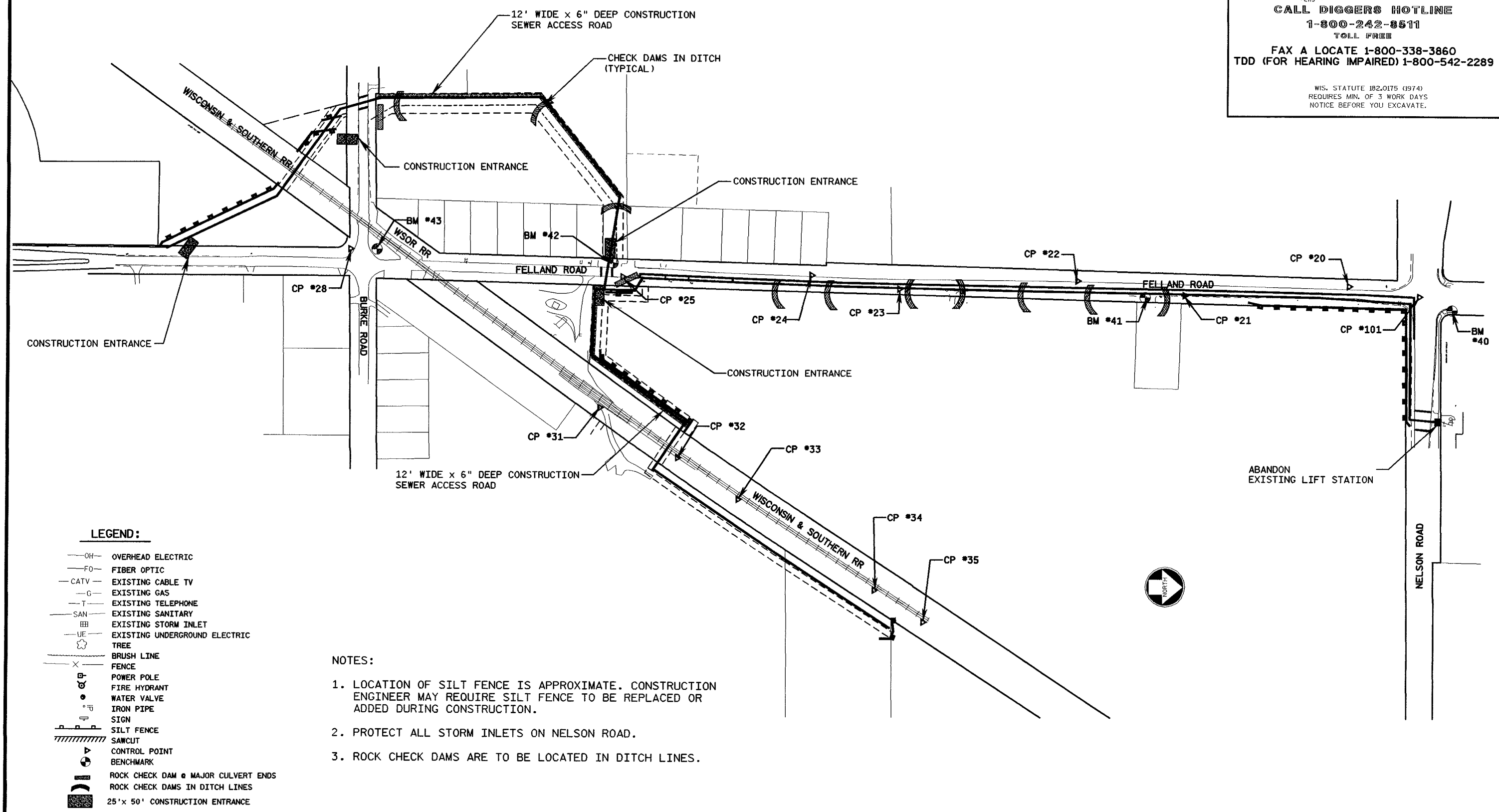
1-800-242-8511

TOLL FREE

FAX A LOCATE 1-800-338-3860

TDD (FOR HEARING IMPAIRED) 1-800-542-2289

WIS. STATUTE 182.0175 (1974)
REQUIRES MIN. OF 3 WORK DAYS
NOTICE BEFORE YOU EXCAVATE.



LEGEND:

- OH— OVERHEAD ELECTRIC
- FO— FIBER OPTIC
- CATV— EXISTING CABLE TV
- G— EXISTING GAS
- T— EXISTING TELEPHONE
- SAN— EXISTING SANITARY
- ▣ EXISTING STORM INLET
- UE— EXISTING UNDERGROUND ELECTRIC
- ⊙ TREE
- BRUSH LINE
- X— FENCE
- ⊙ POWER POLE
- ⊙ FIRE HYDRANT
- ⊙ WATER VALVE
- ⊙ IRON PIPE
- ⊙ SIGN
- ▬ SILT FENCE
- ▬ SAWCUT
- ⊙ CONTROL POINT
- ⊙ BENCHMARK
- ⊙ ROCK CHECK DAM @ MAJOR CULVERT ENDS
- ⊙ ROCK CHECK DAMS IN DITCH LINES
- ▣ 25'x 50' CONSTRUCTION ENTRANCE

NOTES:

1. LOCATION OF SILT FENCE IS APPROXIMATE. CONSTRUCTION ENGINEER MAY REQUIRE SILT FENCE TO BE REPLACED OR ADDED DURING CONSTRUCTION.
2. PROTECT ALL STORM INLETS ON NELSON ROAD.
3. ROCK CHECK DAMS ARE TO BE LOCATED IN DITCH LINES.

1/16/2009 madibw.tbl m:\DGN\52054000\FINAL PLANS TO CITY 01-15-09\SHEET14.dgn

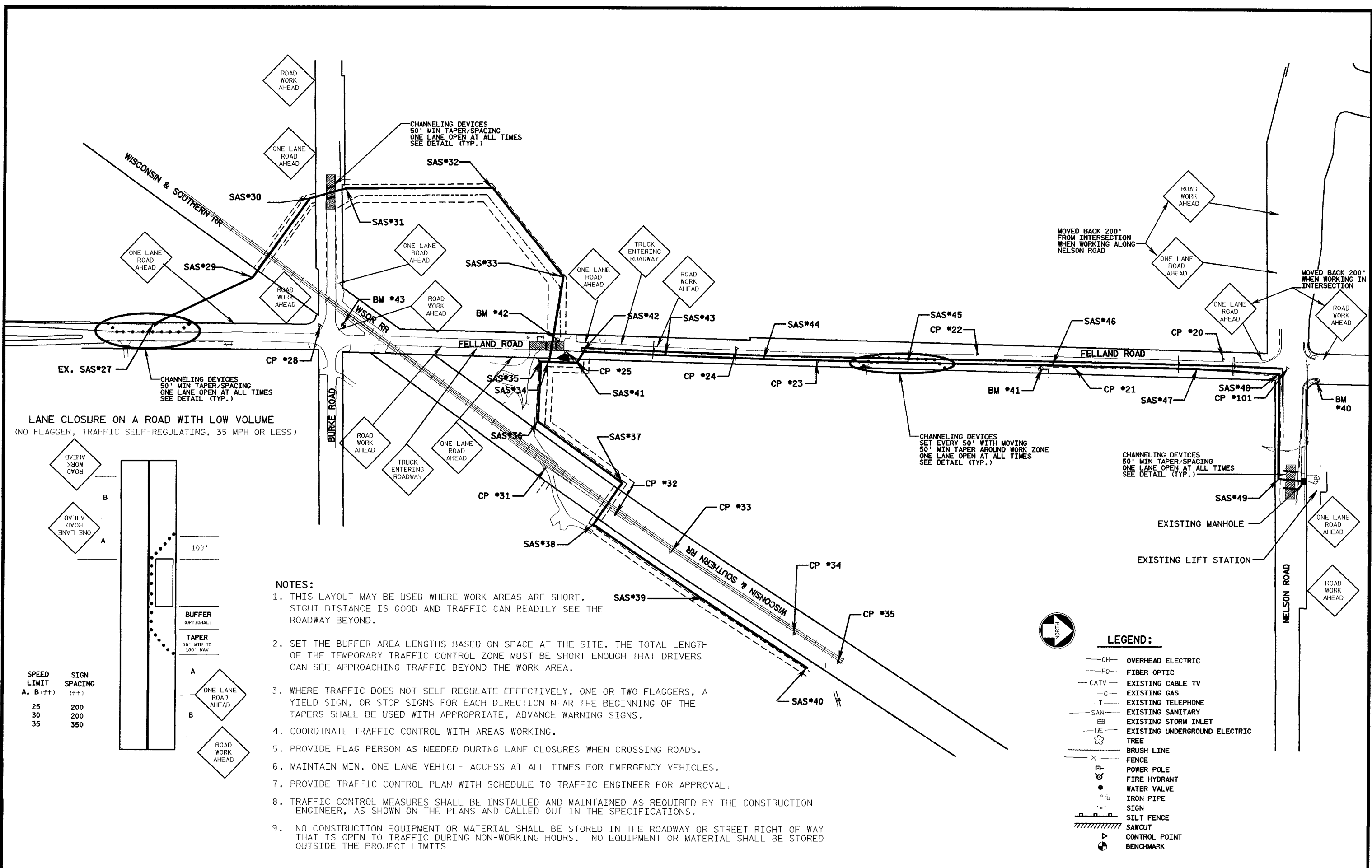
DR. BY JPL/VAH	BOOK NO.		
CHK. BY JPL	JOB NO. 52-0540.00	01-15-09	FINAL PLAN REVISIONS
DATE FEB 2008	SCALE	12-12-08	FINAL PLANS
		NO.	DATE
		REVISION	

CITY OF MADISON
FELLAND ROAD SANITARY SEWER
PHASE 2; MADISON, WISCONSIN
PROJECT No.53W0370

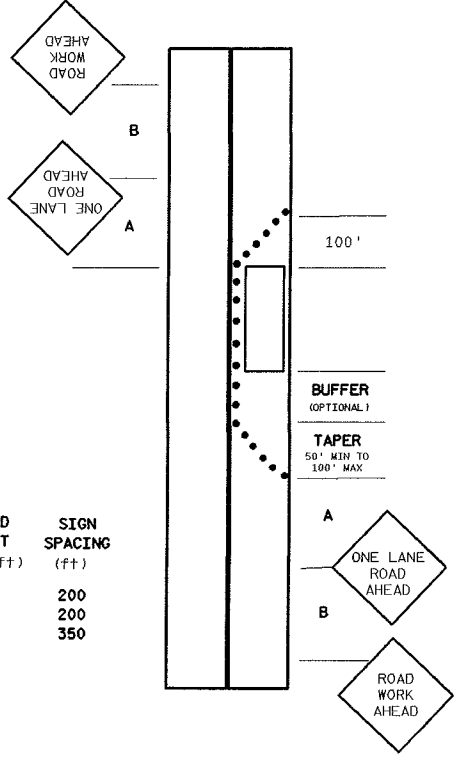


EROSION CONTROL
PROJECT OVERVIEW

DRAWING NO.
14
SHEET NO. 14/18



LANE CLOSURE ON A ROAD WITH LOW VOLUME
(NO FLAGGER, TRAFFIC SELF-REGULATING, 35 MPH OR LESS)



SPEED LIMIT A, B (ft)	SIGN SPACING (ft)
25	200
30	200
35	350

NOTES:

1. THIS LAYOUT MAY BE USED WHERE WORK AREAS ARE SHORT, SIGHT DISTANCE IS GOOD AND TRAFFIC CAN READILY SEE THE ROADWAY BEYOND.
2. SET THE BUFFER AREA LENGTHS BASED ON SPACE AT THE SITE. THE TOTAL LENGTH OF THE TEMPORARY TRAFFIC CONTROL ZONE MUST BE SHORT ENOUGH THAT DRIVERS CAN SEE APPROACHING TRAFFIC BEYOND THE WORK AREA.
3. WHERE TRAFFIC DOES NOT SELF-REGULATE EFFECTIVELY, ONE OR TWO FLAGGERS, A YIELD SIGN, OR STOP SIGNS FOR EACH DIRECTION NEAR THE BEGINNING OF THE TAPERS SHALL BE USED WITH APPROPRIATE, ADVANCE WARNING SIGNS.
4. COORDINATE TRAFFIC CONTROL WITH AREAS WORKING.
5. PROVIDE FLAG PERSON AS NEEDED DURING LANE CLOSURES WHEN CROSSING ROADS.
6. MAINTAIN MIN. ONE LANE VEHICLE ACCESS AT ALL TIMES FOR EMERGENCY VEHICLES.
7. PROVIDE TRAFFIC CONTROL PLAN WITH SCHEDULE TO TRAFFIC ENGINEER FOR APPROVAL.
8. TRAFFIC CONTROL MEASURES SHALL BE INSTALLED AND MAINTAINED AS REQUIRED BY THE CONSTRUCTION ENGINEER, AS SHOWN ON THE PLANS AND CALLED OUT IN THE SPECIFICATIONS.
9. NO CONSTRUCTION EQUIPMENT OR MATERIAL SHALL BE STORED IN THE ROADWAY OR STREET RIGHT OF WAY THAT IS OPEN TO TRAFFIC DURING NON-WORKING HOURS. NO EQUIPMENT OR MATERIAL SHALL BE STORED OUTSIDE THE PROJECT LIMITS



LEGEND:

- OH— OVERHEAD ELECTRIC
- FO— FIBER OPTIC
- CATV— EXISTING CABLE TV
- G— EXISTING GAS
- T— EXISTING TELEPHONE
- SAN— EXISTING SANITARY
- SI— EXISTING STORM INLET
- UE— EXISTING UNDERGROUND ELECTRIC
- TREE
- BRUSH LINE
- FENCE
- P— POWER POLE
- F— FIRE HYDRANT
- W— WATER VALVE
- IP— IRON PIPE
- S— SIGN
- SILT FENCE
- SAWCUT
- ▲— CONTROL POINT
- BENCHMARK

1/16/2009 mcdw.tb1 m:\DGN\52054000\FINAL PLANS TO CITY 01-15-09\SHEET15.dgn

DR. BY	BOOK NO.	NO.	DATE	REVISION	NO.	DATE	REVISION
JFL/VAH			01-15-09	FINAL PLAN REVISIONS			
CHK. BY	JOB NO.		12-12-08	FINAL PLANS			
JFL	52-0540.00						
DATE	SCALE						
FEB 2008							

CITY OF MADISON
FELLAND ROAD SANITARY SEWER
PHASE 2; MADISON, WISCONSIN
PROJECT No. 53W0370



TRAFFIC CONTROL PLAN

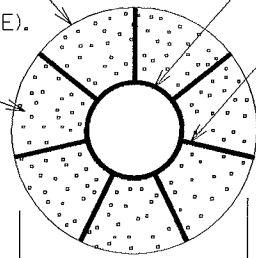
DRAWING NO.
15
SHEET NO. 15/18

CASING PIPE (INSIDE ϕ TO BE A MIN. OF 4" LARGER THAN THE LARGEST OUTSIDE ϕ OF CARRIER PIPE).

PVC CARRIER PIPE

PRE-FABRICATED SPACER OR BLOCKS

FILL VOIDS W/ BLOWN SAND.



NOTE:

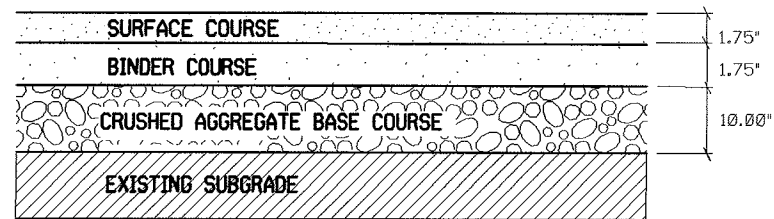
WALL THICKNESS FOR STEEL CASING PIPE WITH 35,000 P.S.I. MIN. YIELD STRENGTH. FOR MATERIAL OF LOWER YIELD STRENGTH, INCREASE THICKNESS AN ADDITIONAL $\frac{1}{16}$ ".

36" MIN. (21" SEWER)
38" MIN. (24" SEWER)

STEEL CASING PIPE FOR E80 LOADING	
MIN. THK. (IN.) FOR PIPE NOT CATHODICALLY PROTECTED	CASING PIPE DIAMETER (IN.)
0.2500	UNDER 12
0.3125	12 - 18
0.3750	18 - 22
0.4375	22 - 25
0.500	25 - 34
0.5625	34 - 42
0.6250	42 - 48

CASING PIPE DETAIL

NTS



ASPHALTIC PAVEMENT CROSS SECTION ON SHOULDER FELLAND ROAD

NOT TO SCALE

Roadway restoration

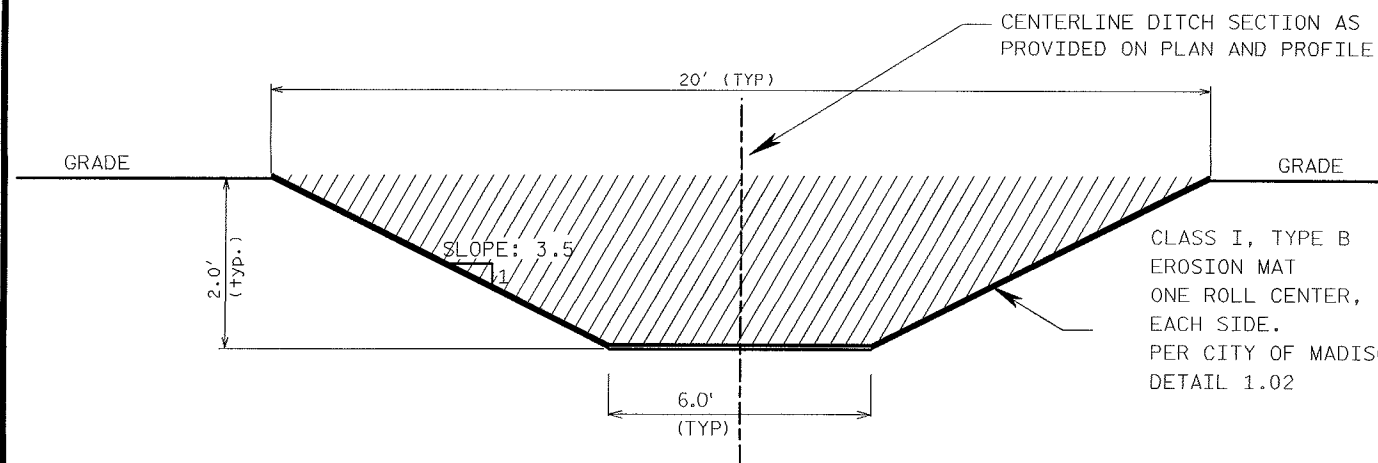
Roadway restoration shall consist of crushed stone base course, gradation no. 2 overlaid with asphalt upper layer equal in thickness to the existing asphaltic pavement with a thickness of 3 inches unless otherwise specified and laid in one layer or more as directed by the engineer.

Pavement along the restored section shall be sawcut, full depth, as shown on the plans. The edges of the existing asphaltic pavement shall be free of loose stones or pavement material.

The crushed stone base course shall be installed in two lifts. The lower lift shall be thoroughly mechanically compacted prior to placing the upper lift.

The asphalt upper layer shall be laid in two lifts. The asphalt upper layer shall be machine laid unless directed by engineer.

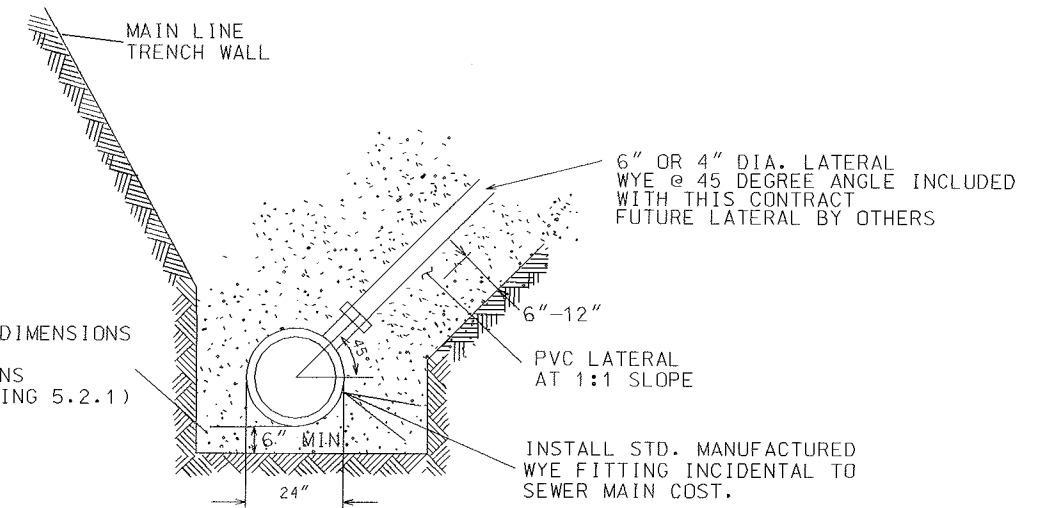
Use City of Madison Type III trench patch for all other road crossings on Burke Road, Nelson Road and Felland Road.



DRAINAGE DITCH SECTION (TYP.)

NOT TO SCALE

CLASS I, TYPE B EROSION MAT ONE ROLL CENTER, TWO ROLLS EACH SIDE. PER CITY OF MADISON DETAIL 1.02



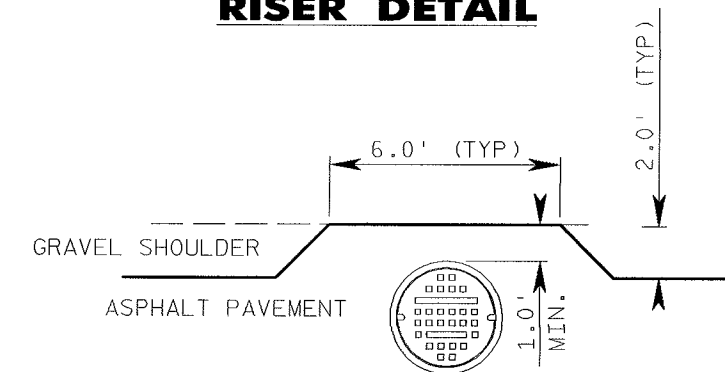
RISER DETAIL

BEDDING MATERIAL AND DIMENSIONS PER CITY OF MADISON STANDARD SPECIFICATIONS (STANDARD DETAIL DRAWING 5.2.1)

6" OR 4" DIA. LATERAL WYE @ 45 DEGREE ANGLE INCLUDED WITH THIS CONTRACT FUTURE LATERAL BY OTHERS

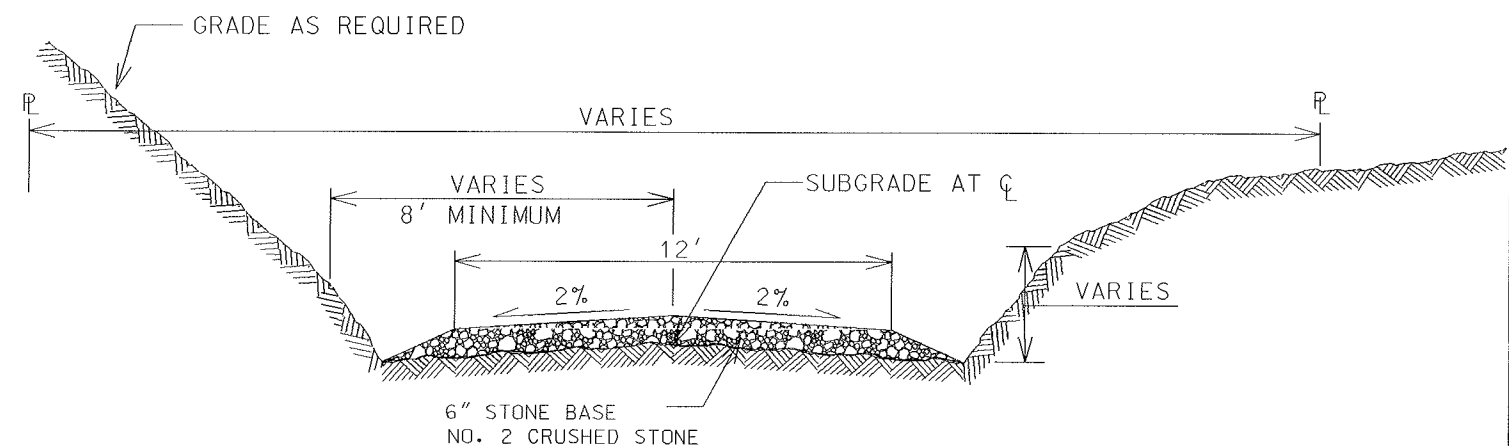
PVC LATERAL AT 1:1 SLOPE

INSTALL STD. MANUFACTURED WYE FITTING INCIDENTAL TO SEWER MAIN COST.



MANHOLE CASTING PLACEMENT DETAIL IN FELLAND ROAD SHOULDER (TYP.)

NOT TO SCALE



SUBGRADE SHALL BE CONSTRUCTED IN ACCORDANCE WITH CITY OF MADISON STANDARD SPECIFICATIONS.

TERRACES AND SIDESLOPES SHALL BE TOPSOILED, SEED, FERTILIZED AND MULCHED IN ACCORDANCE WITH THE SPECIFICATIONS.

INSTALL CRUSHED STONE DITCHES IF DIRECTED BY THE ENGINEER AND DEEPEN THEM AS REQUIRED

ACCESS ROAD TO BE INSTALLED OVER NEW SEWER WHERE SEWER CANNOT BE ACCESSED BY ROAD

INSTALL CRUSHED STONE DITCHES IF DIRECTED TO BY THE ENGINEER AND DEEPEN THEM AS REQUIRED.

ACCESS ROAD TO BE INSTALLED OVER NEW SEWER IN AREAS WHERE SEWER CANNOT BE ACCESSED DIRECTLY BY ROAD.

SAS ACCESS ROAD TYPICAL SECTION

1/16/2009 madibw.tbl m:\DGN\52054000\FINAL PLANS TO CITY 01-15-09\SHEET16.dgn

DR. BY	BOOK NO.	NO.	DATE	REVISION	NO.	DATE	REVISION
JPL/VAH			01-15-09	FINAL PLAN REVISIONS			
CHK. BY	JOB NO.		12-12-08	FINAL PLANS			
JPL	52-0540-00						
DATE	SCALE						
JAN 2007							

CITY OF MADISON
FELLAND ROAD SANITARY SEWER
PHASE 2; MADISON, WISCONSIN
PROJECT No.53W0370

AVRES
ASSOCIATES
Madison, Wisconsin

DETAILS

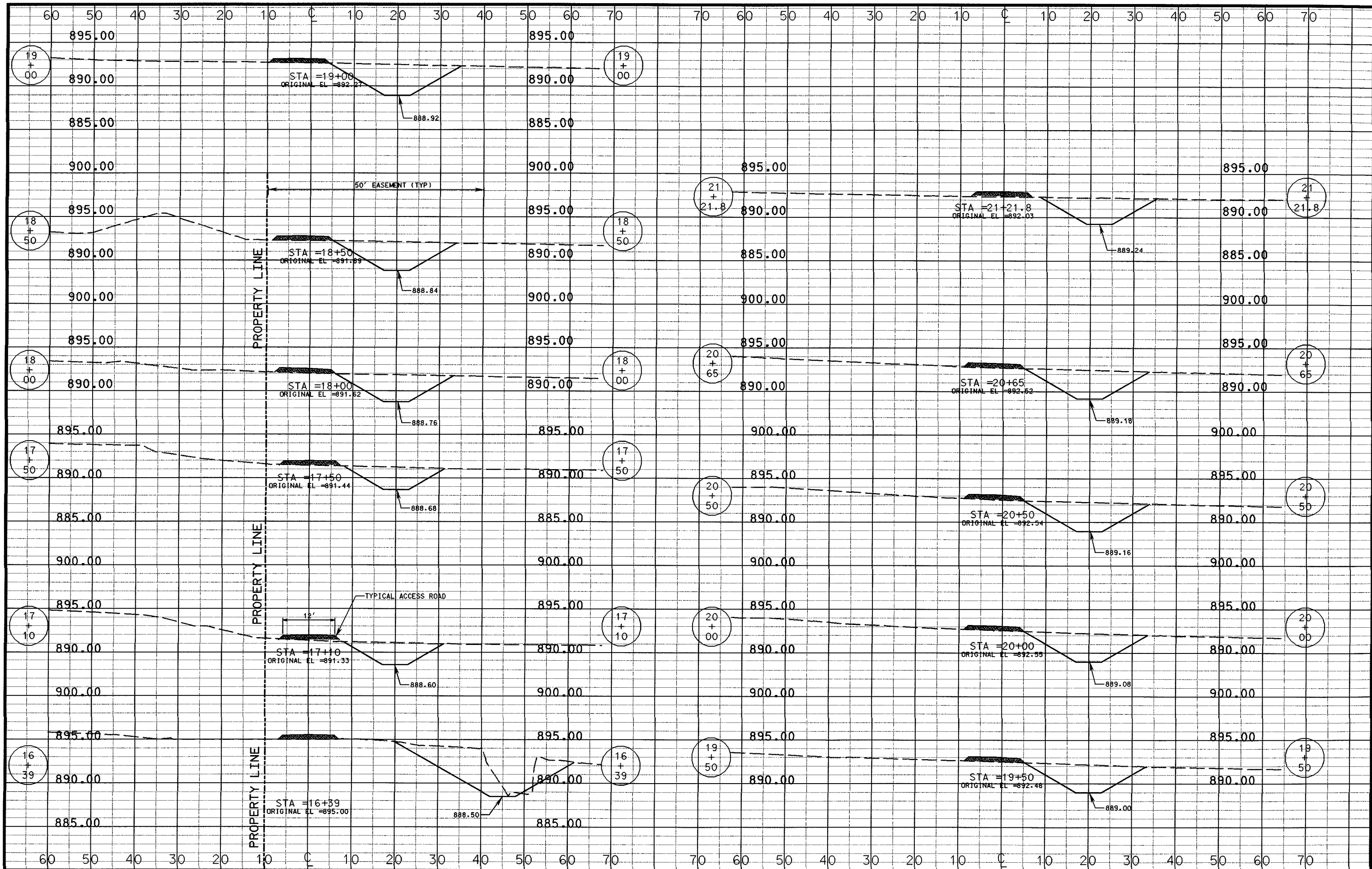
DRAWING REDUCED TO ONE-HALF ORIGINAL SCALE

DRAWING NO.

16

SHEET NO. 16/18

12/15/2008
 SPEN: s:\DGN\52054000\FINAL PLANS TO CITY 12-12-08\SHEET17.dgn



DR. BY JPL/VAH	BOOK NO.
CHK. BY JPL	JOB NO. 52-0540.00
DATE FEB 2008	SCALE

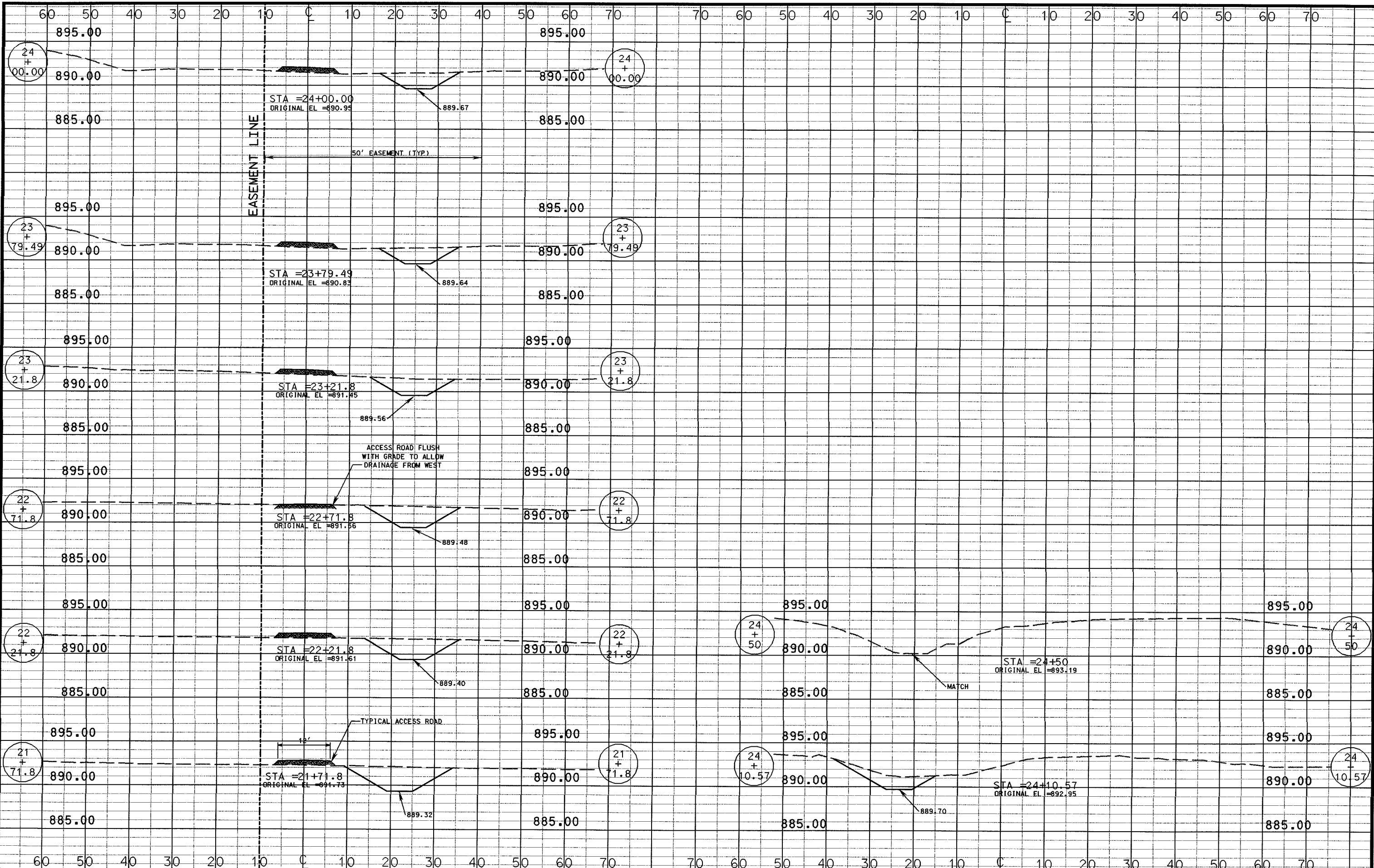
NO.	DATE	REVISION
1	12-12-08	FINAL PLANS

CITY OF MADISON
 FELLAND ROAD SANITARY SEWER
 PHASE 2: MADISON, WISCONSIN
 PROJECT No. 53W0370



CROSS SECTIONS
 STA 15'B+50 - 21'B+50
 DRAWING REDUCED TO ONE-HALF ORIGINAL SCALE

DRAWING NO.
17
 SHEET NO. 17/18



12/15/2008
 SPENR
 M:\DGN\52054000\FINAL PLANS TO CITY 12-12-08\SHEET18.dgn

DR. BY JPL/VAH	BOOK NO.		12-12-08	FINAL PLANS
CHK. BY JPL	JOB NO. 52-0540.00		NO.	DATE
DATE FEB 2008	SCALE			

CITY OF MADISON
 FELLAND ROAD SANITARY SEWER
 PHASE 2; MADISON, WISCONSIN
 PROJECT No. 53W0370



CROSS SECTIONS
 STA 20'B+65 - STA 24'B+50
 DRAWING REDUCED TO ONE-HALF ORIGINAL SCALE

DRAWING NO.
18
 SHEET NO. 18/18