



309 W. JOHNSON STREET MADISON, WI

DRAWING INDEX

GENERAL

- G003 PHOTOGRAPHS OF EXISTING PROPERTIES
- G004 SITE CONTEXT WITH DESIGN
- G005 PERSPECTIVES
- G006 AERIAL LOOKING NORTH
- G007 AERIAL LOOKING SOUTH

CIVIL

- C100 EROSION CONTROL PLAN
- C400 UTILITY PLAN

LANDSCAPE

- L100 LANDSCAPE PLAN
- L200 GREEN ROOFS
- L300 CUT SHEETS
- L301 CUT SHEETS
- L302 CUT SHEETS

ARCHITECTURAL SITE

- AS101 EXISTING SITE PLAN
- AS102 ARCHITECTURAL SITE PLAN
- AS103 SITE LOGISTICS PLAN

ARCHITECTURAL

- A101.1 FLOOR PLANS
- A102.1 FLOOR PLANS
- A103.1 FLOOR PLANS
- A104.1 FLOOR PLANS
- A105.1 FLOOR PLANS
- A106.1 FLOOR PLANS

ELEVATIONS

- A201 NORTH ELEVATION
- A202 WEST ELEVATION
- A203 SOUTH ELEVATION
- A204 EAST ELEVATION
- A205 PARTIAL NORTH ELEVATION
- A206 PARTIAL SOUTH ELEVATION



eppstein uhen : architects

PLAN COMMISSION APPROVAL SET

10/15/2012

PROJECT NUMBER: 11418

8-



305 W. JOHNSON STREET

309 W. JOHNSON STREET

325 W. JOHNSON STREET

D

3 INTERIORS OF EXISTING PROPERTIES TO BE DEMOLISHED
1/2" = 1'-0"

C

WEST DAYTON STREET



344

316

Buildings to be demolished

216 N. Henry

2 EXISTING STREETScape AT WEST DAYTON STREET

B

WEST JOHNSON STREET



301

Buildings to be demolished

333

1 EXISTING STREETScape AT WEST JOHNSON STREET

A



eppstein uhen : architects

milwaukee 333 East Chicago Street
Milwaukee, Wisconsin 53202
tel 414 271 5350 fax 414 271 7794

madison 222 West Washington Ave, Suite 650
Madison, Wisconsin 53703
tel 608 442 5350 fax 608 442 6680

KEY PLAN

ISSUANCE AND REVISIONS

PLAN COMMISSION APPROVAL SET

| # | DATE | DESCRIPTION |
|---|------|-------------|
| | | |

PROGRESS DOCUMENTS

These documents reflect progress and intent and may be subject to change, including additional detail. These are not final construction documents and should not be used for final bidding or construction-related purposes.

PROJECT INFORMATION

309 W. JOHNSON STREET
MADISON, WI



PROJECT NUMBER: 11418
PROJECT MANAGER: CG

SHEET INFORMATION

DATE: 10/15/2012

SHEET NAME: PHOTOGRAPHS OF EXISTING PROPERTIES

G003

SHEET NUMBER:



View From Johnson Street



View From Johnson Street



View From State Street



eppstein uhen : architects

milwaukee 333 East Chicago Street
 Milwaukee, Wisconsin 53202
 tel 414 271 5350 fax 414 271 7794

madison 222 West Washington Ave, Suite 650
 Madison, Wisconsin 53703
 tel 608 442 5350 fax 608 442 6680

KEY PLAN



ISSUANCE AND REVISIONS

PLAN COMMISSION APPROVAL SET

| # | DATE | DESCRIPTION |
|---|------|-------------|
| | | |

PROGRESS DOCUMENTS

These documents reflect progress and intent and may be subject to change including additional detail. These are not final construction documents and should not be used for final bidding or construction-related purposes.

PROJECT INFORMATION

309 W. JOHNSON STREET
 MADISON, WI



PROJECT NUMBER: 11418
 PROJECT MANAGER: CG

SHEET INFORMATION

DATE: 9/19/2012

SHEET NAME: SITE CONTEXT WITH DESIGN

G004

SHEET NUMBER:



LOOKING SOUTH ON JOHNSON



LOOKING EAST ON JOHNSON



LOOKING NORTH ON DAYTON



LOOKING WEST ON DAYTON



AERIAL LOOKING SOUTH



AERIAL LOOKING EAST

D

C

B

A



epstein uhen : architects

milwaukee 333 East Chicago Street
Milwaukee, Wisconsin 53202
tel 414 271 5350 fax 414 271 7794

madison 222 West Washington Ave, Suite 650
Madison, Wisconsin 53703
tel 608 442 5350 fax 608 442 6680

KEY PLAN



ISSUANCE AND REVISIONS

PLAN COMMISSION APPROVAL SET

| # | DATE | DESCRIPTION |
|---|------|-------------|
| | | |

PROGRESS DOCUMENTS

These documents reflect progress and intent and may be subject to change, including additional detail. These are not final construction documents and should not be used for final bidding or construction-related purposes.

PROJECT INFORMATION

309 W. JOHNSON STREET
MADISON, WI



PROJECT NUMBER: 11418
PROJECT MANAGER: CG

SHEET INFORMATION

DATE: 10/15/2012

SHEET NAME:

SHEET NUMBER:

PERSPECTIVES
G005

© Epstein Uhen Architects, Inc.



milwaukee 333 East Chicago Street
 Milwaukee, Wisconsin 53202
 tel 414 271 5350 fax 414 271 7794

 madison 222 West Washington Ave, Suite 650
 Madison, Wisconsin 53703
 tel 608 442 5350 fax 608 442 6680

KEY PLAN

| | |
|--|--|
| | |
|--|--|

ISSUANCE AND REVISIONS

PLAN COMMISSION APPROVAL SET

| # | DATE | DESCRIPTION |
|---|------|-------------|
| | | |

PROGRESS DOCUMENTS

These documents reflect progress and intent and may be subject to change, including additional detail. These are not final construction documents and should not be used for final bidding or construction-related purposes.

PROJECT INFORMATION

309 W. JOHNSON STREET
MADISON, WI


 PROJECT NUMBER: 11418
 PROJECT MANAGER: CG

SHEET INFORMATION

DATE: 10/15/2012

SHEET NAME: AERIAL LOOKING NORTH

SHEET NUMBER: **G006**

© Epstein Uhen Architects, Inc.



1

2

3

4

5

6

7

8

D

C

B

A



epstein uhen : architects

milwaukee 333 East Chicago Street
Milwaukee, Wisconsin 53202
tel 414 271 5350 fax 414 271 7794

madison 222 West Washington Ave, Suite 650
Madison, Wisconsin 53703
tel 608 442 5350 fax 608 442 6680

KEY PLAN

ISSUANCE AND REVISIONS

PLAN COMMISSION APPROVAL
SET

| # | DATE | DESCRIPTION |
|---|------|-------------|
| | | |

PROGRESS DOCUMENTS

These documents reflect progress and intent and may be subject to change, including additional detail. These are not final construction documents and should not be used for final bidding or construction-related purposes.

PROJECT INFORMATION

309 W. JOHNSON STREET
MADISON, WI



PROJECT NUMBER: 11418
PROJECT MANAGER: CG

SHEET INFORMATION

DATE: 10/15/2012

SHEET NAME: AERIAL LOOKING SOUTH

SHEET NUMBER: **G007**

© Epstein Uhen Architects, Inc.

1

2

3

4

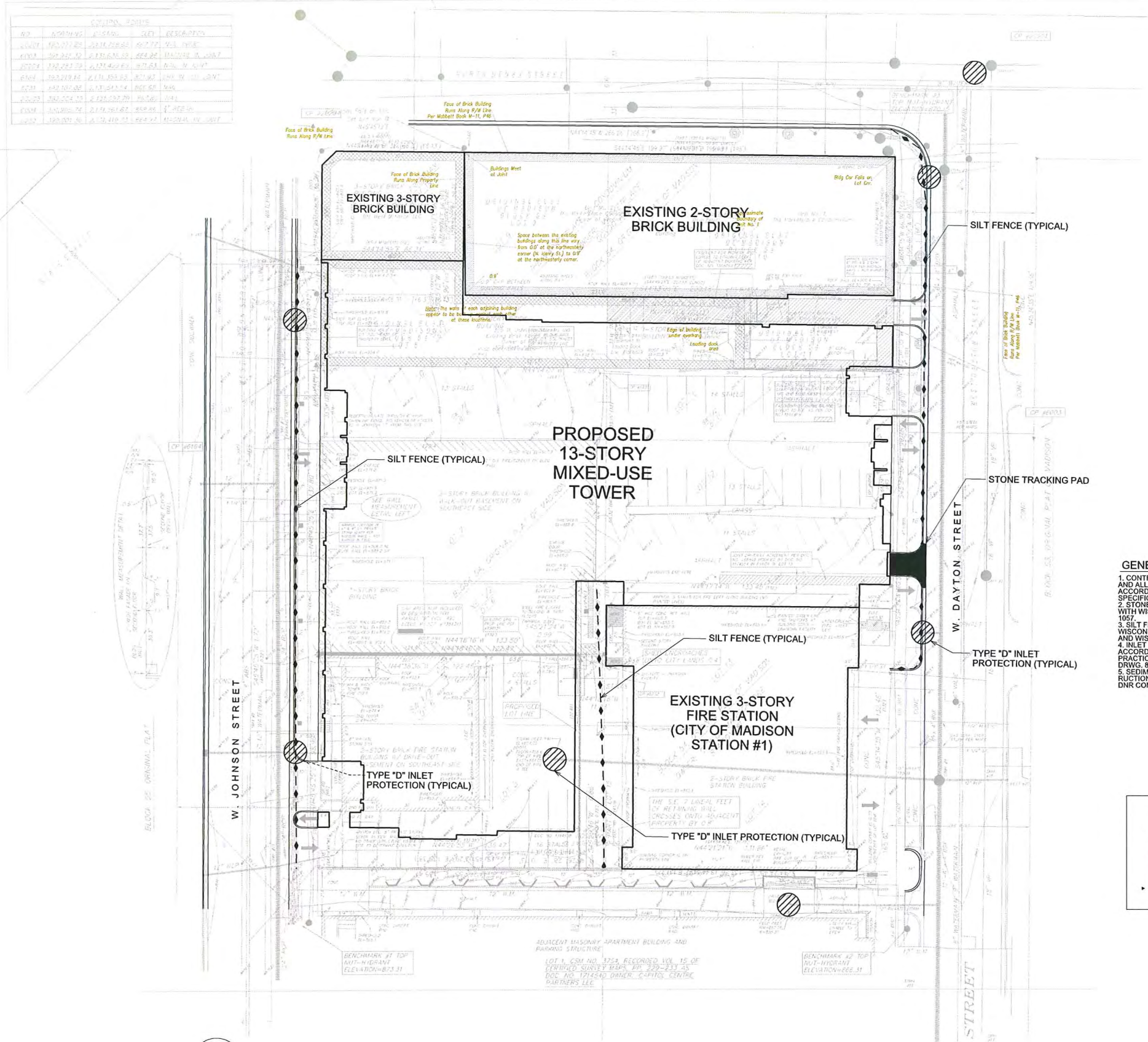
5

6

7

8

| NO. | DATE | BY | DESCRIPTION |
|-----|------------|----|---------------------------|
| 01 | 08/15/2012 | CS | ISSUED FOR PERMIT |
| 02 | 08/15/2012 | CS | REVISED PER CITY COMMENTS |
| 03 | 08/15/2012 | CS | REVISED PER CITY COMMENTS |
| 04 | 08/15/2012 | CS | REVISED PER CITY COMMENTS |
| 05 | 08/15/2012 | CS | REVISED PER CITY COMMENTS |
| 06 | 08/15/2012 | CS | REVISED PER CITY COMMENTS |
| 07 | 08/15/2012 | CS | REVISED PER CITY COMMENTS |
| 08 | 08/15/2012 | CS | REVISED PER CITY COMMENTS |
| 09 | 08/15/2012 | CS | REVISED PER CITY COMMENTS |
| 10 | 08/15/2012 | CS | REVISED PER CITY COMMENTS |
| 11 | 08/15/2012 | CS | REVISED PER CITY COMMENTS |
| 12 | 08/15/2012 | CS | REVISED PER CITY COMMENTS |



- GENERAL NOTES**
1. CONTRACTOR IS RESPONSIBLE FOR TRAFFIC CONTROL AND ALL ROAD REPAIR WORK IN PUBLIC R.O.W. IN ACCORDANCE WITH CITY OF MADISON STANDARDS AND SPECIFICATIONS.
 2. STONE TRACKING PAD IS TO BE BUILT IN ACCORDANCE WITH WISCONSIN DNR CONSERVATION PRACTICE STANDARD 1057.
 3. SILT FENCE IS TO BE BUILT IN ACCORDANCE WITH WISCONSIN DNR CONSERVATION PRACTICE STANDARD 1057, AND WISC. DOT STD. DETAIL DRWG. 8 E 9-6.
 4. INLET PROTECTION (TYPE "D") IS TO BE BUILT IN ACCORDANCE WITH WISCONSIN DNR CONSERVATION PRACTICE STANDARD 1060, AND WISC. DOT STD. DETAIL DRWG. 8 E 10-2.
 5. SEDIMENT CONTROL FOR "DEWATERING" DURING CONSTRUCTION, IS TO BE BUILT IN ACCORDANCE WITH WISCONSIN DNR CONSERVATION PRACTICE STANDARD 1061.



1 EROSION CONTROL PLAN
C100 1"=20'



milwaukee 333 East Chicago Street
 Milwaukee, Wisconsin 53202
 tel 414 271 5350 fax 414 271 7794

madison 222 West Washington Ave, Suite 650
 Madison, Wisconsin 53703
 tel 608 442 5350 fax 608 442 6680

KEY PLAN

TRUE NORTH PROJECT NORTH

ISSUANCE AND REVISIONS

PLAN COMMISSION APPROVAL SET

| # | DATE | DESCRIPTION |
|---|------|-------------|
| | | |

PROGRESS DOCUMENTS

These documents reflect progress and intent and may be subject to change, including additional detail. These are not final construction documents and should not be used for final bidding or construction-related purposes.

PROJECT INFORMATION

309 W. JOHNSON STREET
 MADISON, WI

HOVDE PROPERTIES

PROJECT NUMBER: 11418
 PROJECT MANAGER: CG

SHEET INFORMATION

DATE: 8/15/2012

SHEET NAME: Erosion Control Plan
C100

SHEET NUMBER:



| NO. | DESCRIPTION | DATE | BY | CHECKED |
|-----|-------------------|------------|------------|------------|
| 1 | ISSUED FOR PERMIT | 10/15/2012 | J. HENNING | J. HENNING |
| 2 | REVISED | 10/15/2012 | J. HENNING | J. HENNING |
| 3 | REVISED | 10/15/2012 | J. HENNING | J. HENNING |
| 4 | REVISED | 10/15/2012 | J. HENNING | J. HENNING |
| 5 | REVISED | 10/15/2012 | J. HENNING | J. HENNING |
| 6 | REVISED | 10/15/2012 | J. HENNING | J. HENNING |
| 7 | REVISED | 10/15/2012 | J. HENNING | J. HENNING |
| 8 | REVISED | 10/15/2012 | J. HENNING | J. HENNING |
| 9 | REVISED | 10/15/2012 | J. HENNING | J. HENNING |
| 10 | REVISED | 10/15/2012 | J. HENNING | J. HENNING |

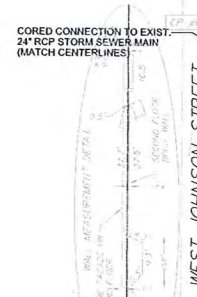
STATE STREET

NORTH HENRY STREET

8" x 12" TAPPING SLEEVE AND VALVE CONNECTION

8" WYE CONNECTION TO EXIST. SANITARY SEWER MAIN

CORED CONNECTION TO EXIST. 24" RCP STORM SEWER MAIN (MATCH CENTERLINES)



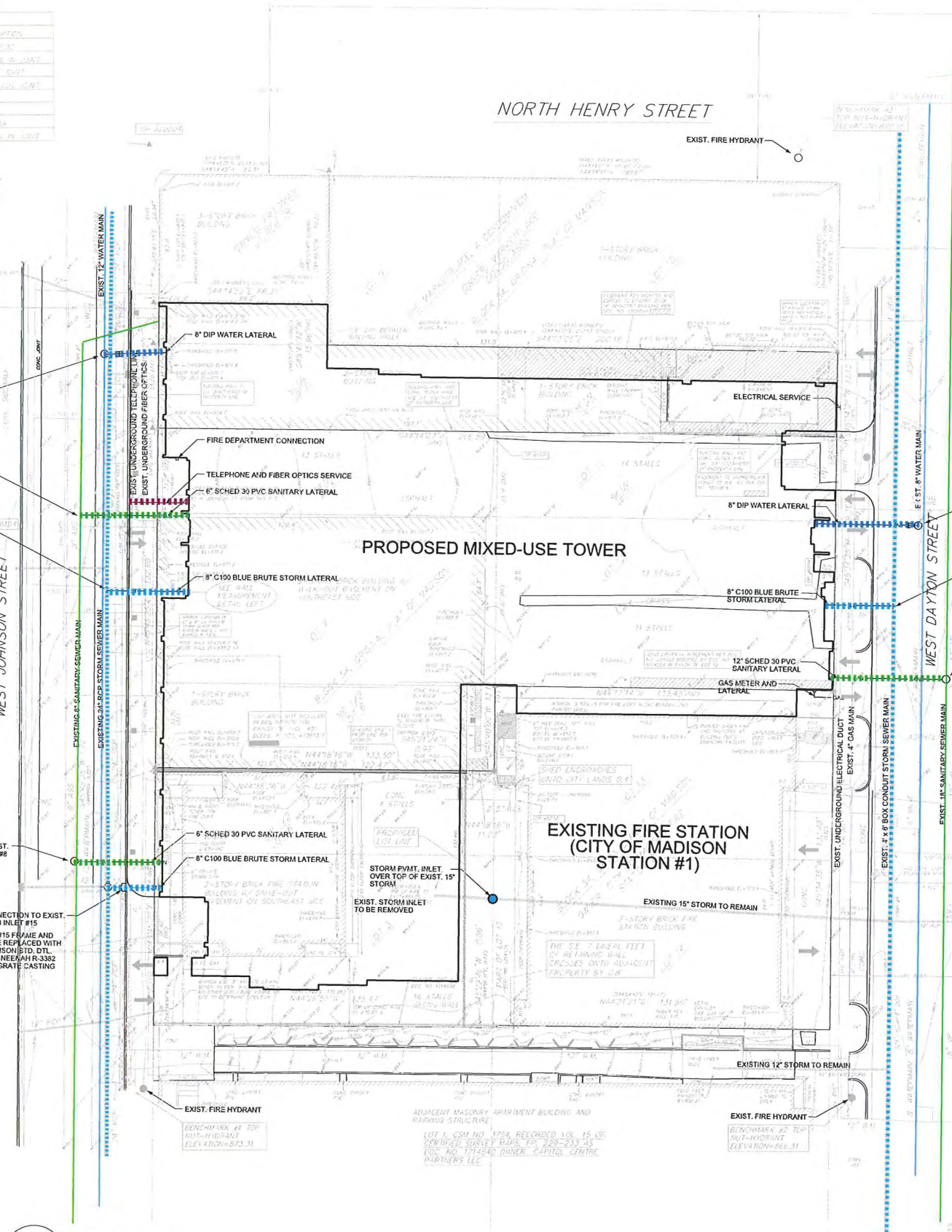
CONNECTION TO EXIST. SANITARY MANHOLE #6

CORED CONNECTION TO EXIST. STORM CURB INLET #15

CURB INLET #15 FRAME AND GRATE TO BE REPLACED WITH CITY OF MADISON STD. DET. DWG. 5.7.37 - NEENAH R-3382 FRAME AND GRATE CASTING

EXIST. FIRE HYDRANT

EXIST. FIRE HYDRANT



WEST DAYTON STREET

8" x 8" TAPPING SLEEVE AND VALVE CONNECTION

CORED CONNECTION TO TOP ONE FOOT OF EXIST. 4" x 6" BOX CONDUIT

CORED CONNECTION TO EXIST. SANITARY MANHOLE #2

EXIST. UNDERGROUND ELECTRICAL DUCT

EXIST. 4" GAS MAIN

EXIST. 12" BOX CONDUIT STORM SEWER MAIN

EXIST. 16" SANITARY SEWER MAIN

EXIST. 15" STORM TO REMAIN

EXISTING 12" STORM TO REMAIN

EXIST. FIRE HYDRANT

EXIST. FIRE HYDRANT

| NO. | DESCRIPTION | DATE | BY | CHECKED |
|-----|-------------------|------------|------------|------------|
| 1 | ISSUED FOR PERMIT | 10/15/2012 | J. HENNING | J. HENNING |
| 2 | REVISED | 10/15/2012 | J. HENNING | J. HENNING |
| 3 | REVISED | 10/15/2012 | J. HENNING | J. HENNING |
| 4 | REVISED | 10/15/2012 | J. HENNING | J. HENNING |
| 5 | REVISED | 10/15/2012 | J. HENNING | J. HENNING |
| 6 | REVISED | 10/15/2012 | J. HENNING | J. HENNING |
| 7 | REVISED | 10/15/2012 | J. HENNING | J. HENNING |
| 8 | REVISED | 10/15/2012 | J. HENNING | J. HENNING |
| 9 | REVISED | 10/15/2012 | J. HENNING | J. HENNING |
| 10 | REVISED | 10/15/2012 | J. HENNING | J. HENNING |

1 UTILITY PLAN
C400
1"=20'



milwaukee 333 East Chicago Street
Milwaukee, Wisconsin 53202
tel 414 271 5350 fax 414 271 7794

madison 222 West Washington Ave, Suite 650
Madison, Wisconsin 53703
tel 608 442 5350 fax 608 442 6680

KEY PLAN

ISSUANCE AND REVISIONS

PLAN COMMISSION APPROVAL SET

| # | DATE | DESCRIPTION |
|---|------|-------------|
| | | |

PROGRESS DOCUMENTS

These documents reflect progress and intent and may be subject to change, including additional detail. These are not final construction documents and should not be used for final bidding or construction-related purposes.

TRUE NORTH PROJECT NORTH

PROJECT INFORMATION

309 W. JOHNSON STREET
MADISON, WI

HOVDE PROPERTIES

PROJECT NUMBER: 11418
PROJECT MANAGER: CG

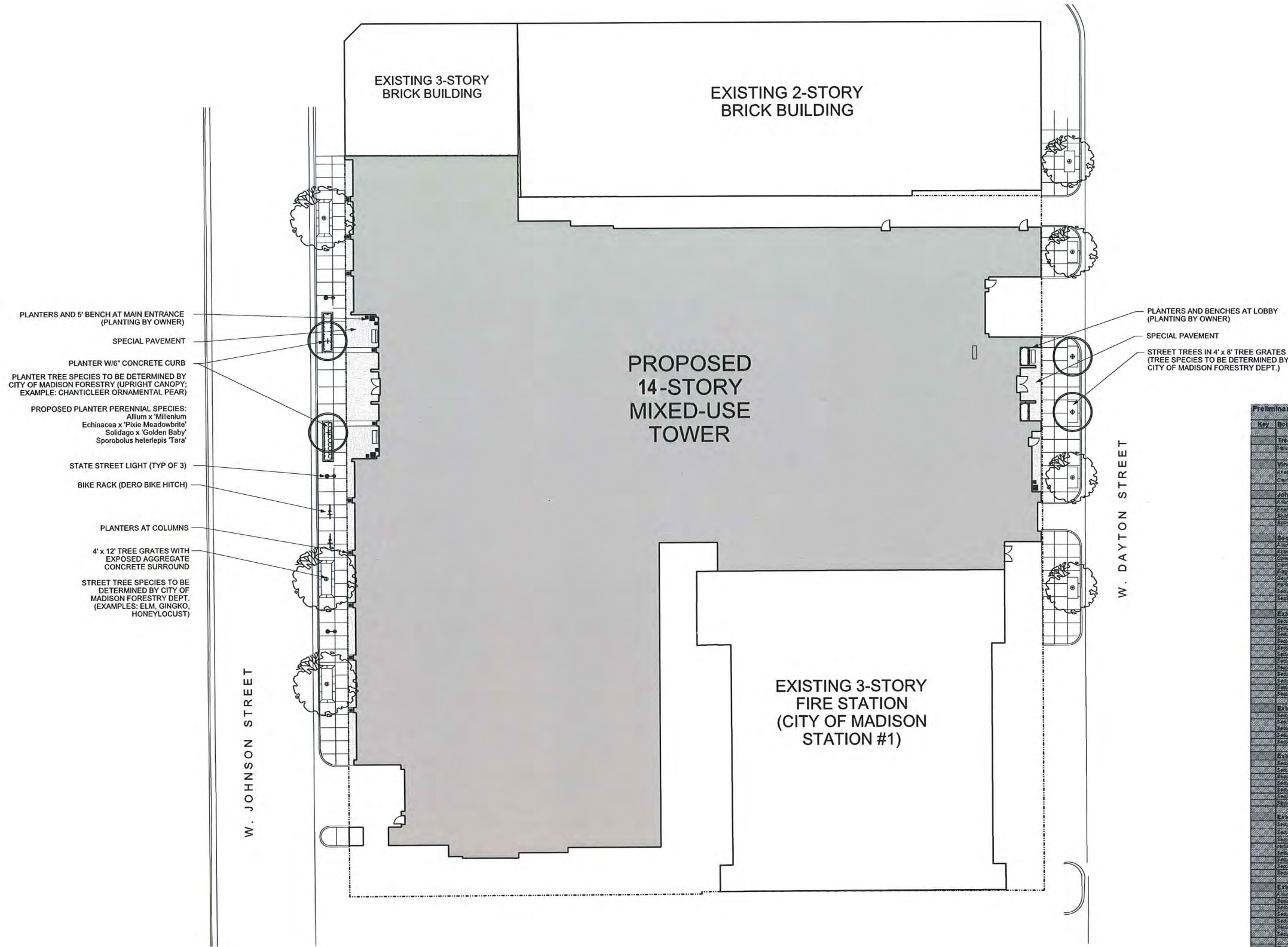
SHEET INFORMATION

DATE: 10/15/2012

SHEET NAME: Utility Plan C400

SHEET NUMBER:





| Key | Botanical Name | Common Name | Quantity | Size | Comments |
|--|--------------------------------------|--------------|----------|---------|----------------|
| Trees | | | | | |
| | <i>Quercus macrocarpa</i> | White Oak | 1 | 12" DBH | Plant in front |
| | <i>Prunella pennsylvanica</i> | Black Cherry | 1 | 12" DBH | Plant in front |
| Vines | | | | | |
| | <i>Ampelopsis</i> | Grape | 1 | 1" dia | Plant in front |
| | <i>Clematis vitalba</i> | Clematis | 1 | 1" dia | Plant in front |
| Johnsnes St. Planter Perennials | | | | | |
| | <i>Allium 'Millenium'</i> | Allium | 1 | 12" dia | Plant in front |
| | <i>Echinacea 'Pixie Meadowbrite'</i> | Echinacea | 1 | 12" dia | Plant in front |
| | <i>Solidago 'Golden Baby'</i> | Solidago | 1 | 12" dia | Plant in front |
| | <i>Sporobolus heterolepis 'Tara'</i> | Sporobolus | 1 | 12" dia | Plant in front |
| Proposed Planter Perennials | | | | | |
| | <i>Allium 'Millenium'</i> | Allium | 1 | 12" dia | Plant in front |
| | <i>Echinacea 'Pixie Meadowbrite'</i> | Echinacea | 1 | 12" dia | Plant in front |
| | <i>Solidago 'Golden Baby'</i> | Solidago | 1 | 12" dia | Plant in front |
| | <i>Sporobolus heterolepis 'Tara'</i> | Sporobolus | 1 | 12" dia | Plant in front |
| Extensive Green Roof - mix 1 | | | | | |
| | <i>Allium 'Millenium'</i> | Allium | 1 | 12" dia | Plant in front |
| | <i>Echinacea 'Pixie Meadowbrite'</i> | Echinacea | 1 | 12" dia | Plant in front |
| | <i>Solidago 'Golden Baby'</i> | Solidago | 1 | 12" dia | Plant in front |
| | <i>Sporobolus heterolepis 'Tara'</i> | Sporobolus | 1 | 12" dia | Plant in front |
| Extensive Green Roof - mix 2 | | | | | |
| | <i>Allium 'Millenium'</i> | Allium | 1 | 12" dia | Plant in front |
| | <i>Echinacea 'Pixie Meadowbrite'</i> | Echinacea | 1 | 12" dia | Plant in front |
| | <i>Solidago 'Golden Baby'</i> | Solidago | 1 | 12" dia | Plant in front |
| | <i>Sporobolus heterolepis 'Tara'</i> | Sporobolus | 1 | 12" dia | Plant in front |
| Extensive Green Roof - mix 3 | | | | | |
| | <i>Allium 'Millenium'</i> | Allium | 1 | 12" dia | Plant in front |
| | <i>Echinacea 'Pixie Meadowbrite'</i> | Echinacea | 1 | 12" dia | Plant in front |
| | <i>Solidago 'Golden Baby'</i> | Solidago | 1 | 12" dia | Plant in front |
| | <i>Sporobolus heterolepis 'Tara'</i> | Sporobolus | 1 | 12" dia | Plant in front |
| Extensive Green Roof - mix 4 | | | | | |
| | <i>Allium 'Millenium'</i> | Allium | 1 | 12" dia | Plant in front |
| | <i>Echinacea 'Pixie Meadowbrite'</i> | Echinacea | 1 | 12" dia | Plant in front |
| | <i>Solidago 'Golden Baby'</i> | Solidago | 1 | 12" dia | Plant in front |
| | <i>Sporobolus heterolepis 'Tara'</i> | Sporobolus | 1 | 12" dia | Plant in front |
| Extensive Green Roof - mix 5 | | | | | |
| | <i>Allium 'Millenium'</i> | Allium | 1 | 12" dia | Plant in front |
| | <i>Echinacea 'Pixie Meadowbrite'</i> | Echinacea | 1 | 12" dia | Plant in front |
| | <i>Solidago 'Golden Baby'</i> | Solidago | 1 | 12" dia | Plant in front |
| | <i>Sporobolus heterolepis 'Tara'</i> | Sporobolus | 1 | 12" dia | Plant in front |
| Extensive Green Roof - mix 6 | | | | | |
| | <i>Allium 'Millenium'</i> | Allium | 1 | 12" dia | Plant in front |
| | <i>Echinacea 'Pixie Meadowbrite'</i> | Echinacea | 1 | 12" dia | Plant in front |
| | <i>Solidago 'Golden Baby'</i> | Solidago | 1 | 12" dia | Plant in front |
| | <i>Sporobolus heterolepis 'Tara'</i> | Sporobolus | 1 | 12" dia | Plant in front |

1 LANDSCAPE PLAN
 L100 1/16"=1'-0"



milwaukee 333 East Chicago Street
 Milwaukee, Wisconsin 53202
 tel 414 271 5350 fax 414 271 7794

madison 222 West Washington Ave, Suite 650
 Madison, Wisconsin 53703
 tel 608 442 5350 fax 608 442 6680

KEY PLAN

ISSUANCE AND REVISIONS

PLAN COMMISSION APPROVAL SET

| # | DATE | DESCRIPTION |
|---|------|-------------|
| | | |

PROGRESS DOCUMENTS

These documents reflect progress and intent and may be subject to change, including additional detail. These are not final construction documents and should not be used for final bidding or construction-related purposes.

TRUE NORTH PROJECT NORTH

PROJECT INFORMATION

309 W. JOHNSON STREET
 MADISON, WI

HOVDE PROPERTIES

PROJECT NUMBER: 11418
 PROJECT MANAGER: CG

SHEET INFORMATION

DATE: 8/15/2012

SHEET NAME: Landscape Plan
L100

SHEET NUMBER:



EXTENSIVE GREEN ROOF;
MODULAR SYSTEM
(2-3 SEDUM MIXES)

STONE BALLAST

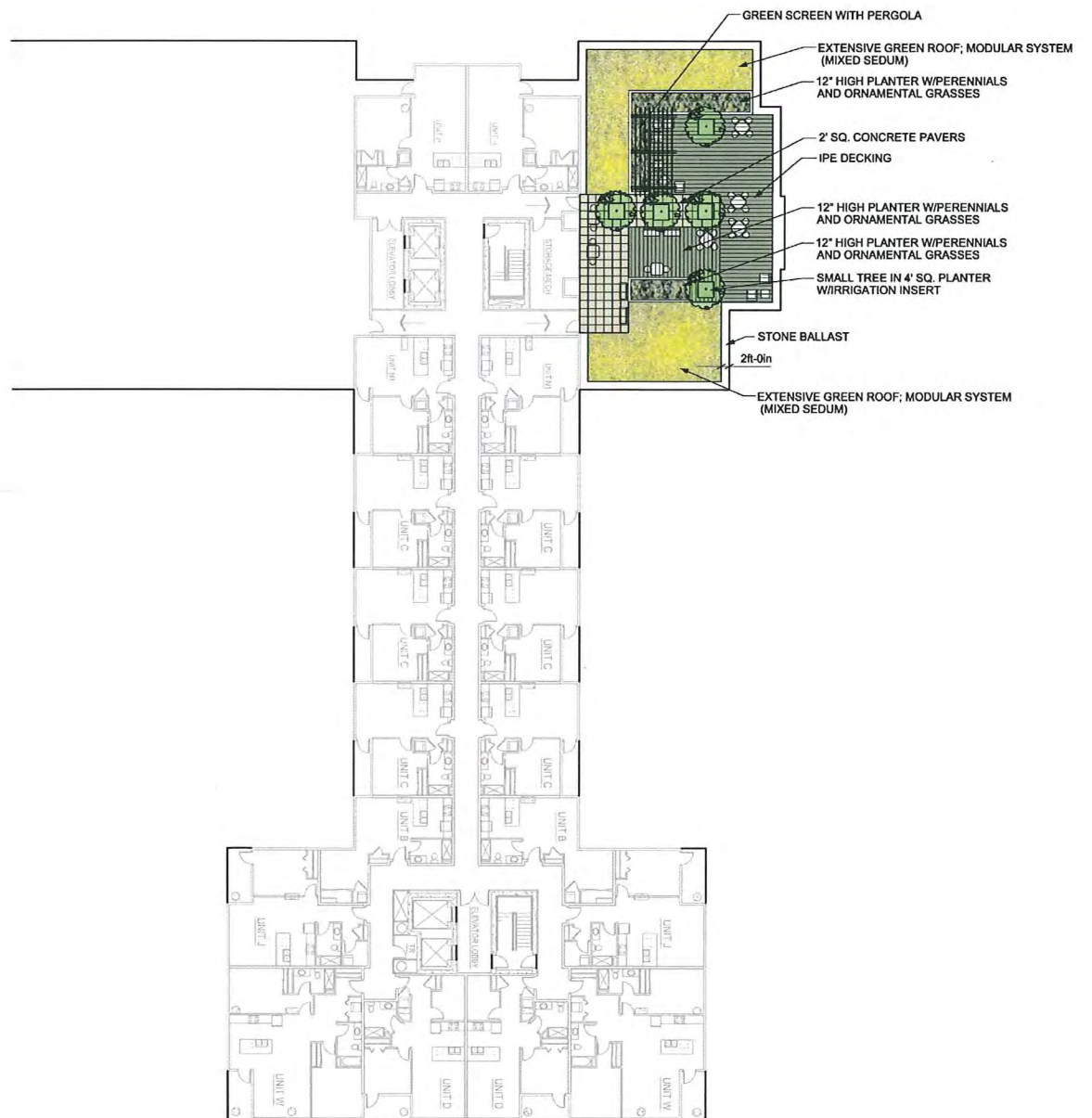
BALLAST PAVERS

EXTENSIVE GREEN ROOF;
MODULAR SYSTEM
(SHADE TOLERANT SEDUM MIX)

STONE BALLAST

BALLAST PAVERS

1 GREEN ROOF - THIRD FLOOR
L200 1/16"=1'-0"



GREEN SCREEN WITH PERGOLA

EXTENSIVE GREEN ROOF; MODULAR SYSTEM
(MIXED SEDUM)

12" HIGH PLANTER W/PERENNIALS
AND ORNAMENTAL GRASSES

2' SQ. CONCRETE PAVERS

IPE DECKING

12" HIGH PLANTER W/PERENNIALS
AND ORNAMENTAL GRASSES

12" HIGH PLANTER W/PERENNIALS
AND ORNAMENTAL GRASSES

SMALL TREE IN 4' SQ. PLANTER
W/IRRIGATION INSERT

STONE BALLAST
2ft-0in

EXTENSIVE GREEN ROOF; MODULAR SYSTEM
(MIXED SEDUM)

2 GREEN ROOF - SEVENTH FLOOR
L200 1/16"=1'-0"



milwaukee 333 East Chicago Street
Milwaukee, Wisconsin 53202
tel 414 271 5350 fax 414 271 7794

madison 222 West Washington Ave, Suite 650
Madison, Wisconsin 53703
tel 608 442 5350 fax 608 442 6680

KEY PLAN

TRUE NORTH PROJECT NORTH

ISSUANCE AND REVISIONS

PLAN COMMISSION APPROVAL SET

| # | DATE | DESCRIPTION |
|---|------|-------------|
| | | |

PROGRESS DOCUMENTS

These documents reflect progress and intent and may be subject to change, including additional detail. These are not final construction documents and should not be used for final bidding or construction-related purposes.

PROJECT INFORMATION

309 W. JOHNSON STREET
MADISON, WI

PROJECT NUMBER: 11418
PROJECT MANAGER: CG

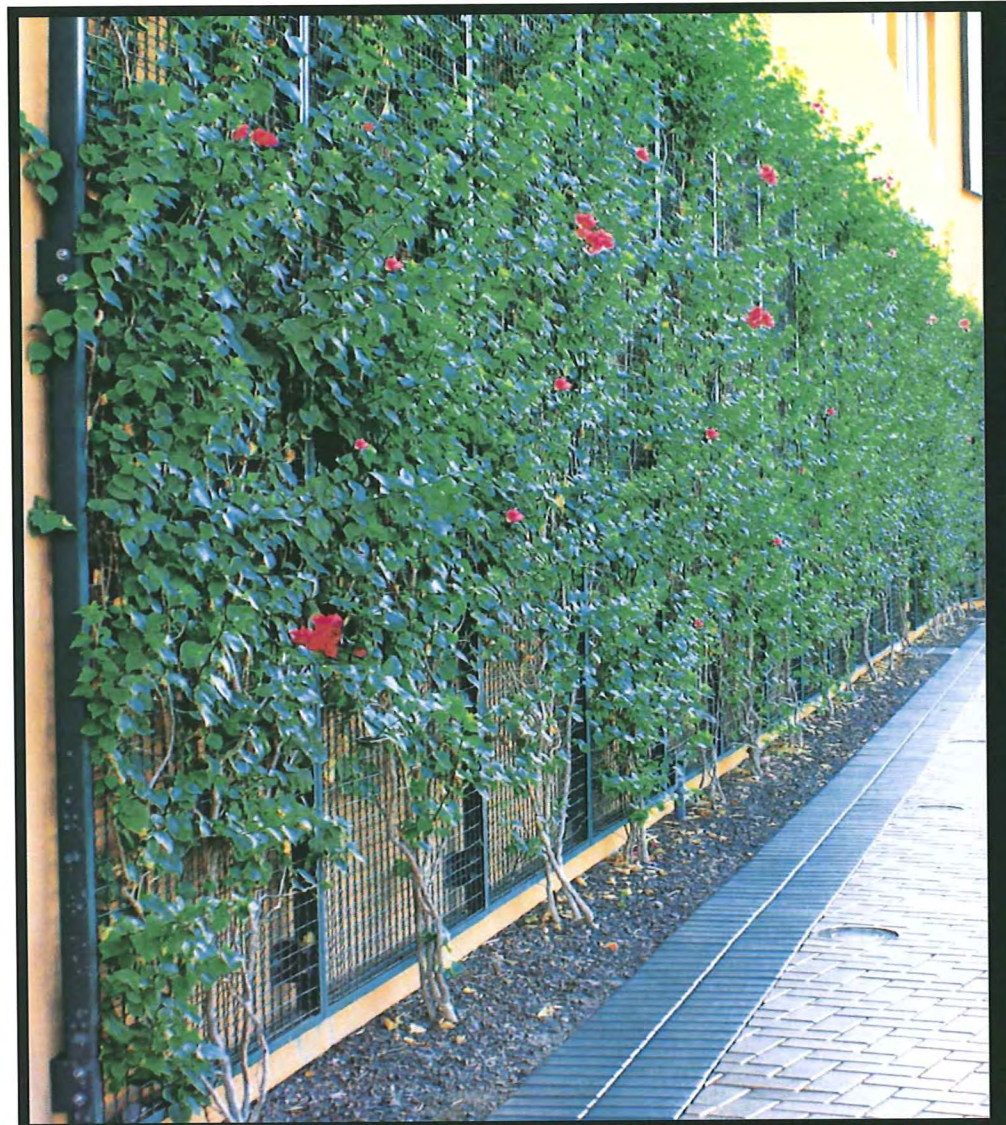
SHEET INFORMATION

DATE: 10/15/2012

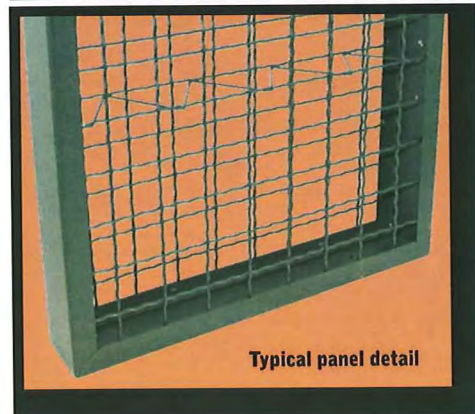
SHEET NAME: Green Roofs L200

SHEET NUMBER:

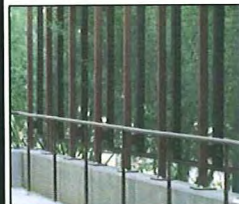
© Eppstein Uhen Architects, Inc.



McNICHOLS Plant Screens add aesthetic appeal to this exterior wall.



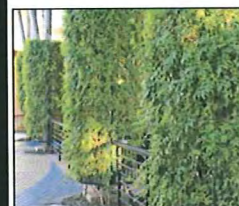
Typical panel detail



Mounted Trellis



Rock Wall Fencing



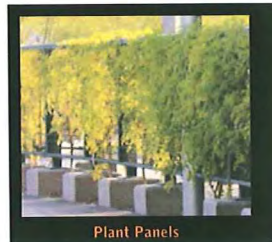
Columns



Trellis



Plant Wall



Plant Panels



WOOD TILES

BEAUTY, LONGEVITY AND EXCEPTIONAL VALUE

BISON WOOD TILES

February 2012

Constructed from select Brazilian Hardwoods, Bison Wood Tiles are harvested in an environmentally responsible method designed to preserve and enhance the economic viability of rain forest hardwoods.

- Hardwood species include Ipê and Massaranduba
- FSC® Certified options available
- Commercial grade and constructed with stainless steel screws
- Bison Wood Tiles are beautiful and weather to natural gray if left unfinished
- 100% natural wood and approximately three times harder than Red Oak
- Long Lasting and Low Maintenance



The mark of responsible forestry



BISON INNOVATIVE PRODUCTS | 1975 W. 13TH AVENUE, DENVER, CO 80204 USA | 800-333-4234 | INFO@BISONIP.COM | BISONIP.COM

D

C

B

A



eppstein uhen : architects

milwaukee 333 East Chicago Street
Milwaukee, Wisconsin 53202
tel 414 271 5350 fax 414 271 7794

madison 222 West Washington Ave, Suite 650
Madison, Wisconsin 53703
tel 608 442 5350 fax 608 442 6680

KEY PLAN



TRUE NORTH PROJECT NORTH

ISSUANCE AND REVISIONS

PLAN COMMISSION APPROVAL SET

| # | DATE | DESCRIPTION |
|---|------|-------------|
|---|------|-------------|

PROGRESS DOCUMENTS

These documents reflect progress and intent and may be subject to change, including additional detail. These are not final construction documents and should not be used for final bidding or construction-related purposes.

PROJECT INFORMATION

309 W. JOHNSON STREET
MADISON, WI



PROJECT NUMBER: 11418
PROJECT MANAGER: CG

SHEET INFORMATION

DATE: 10/15/2012

SHEET NAME:

SHEET NUMBER:

Cut sheets

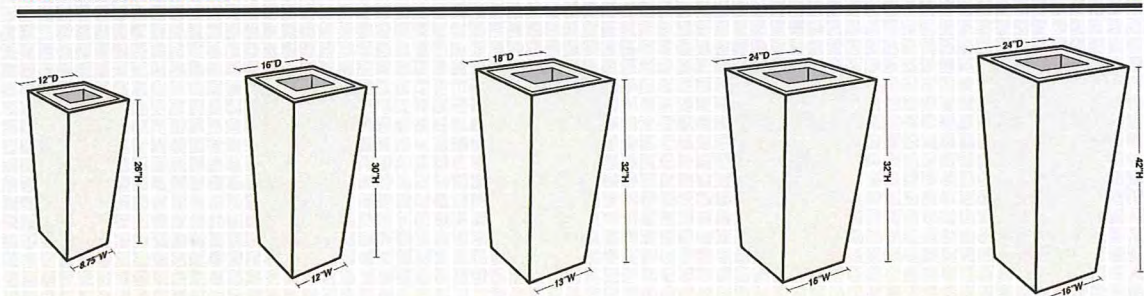
L300

© Ecosystem Urban Architects, Inc.



#034 FAIRFAX COPPER 124"D x 32"H #034 FAIRFAX MATTE BLACK 118"D x 32"H FOR MORE EXAMPLES VISIT WWW.IAPSF.COM

#034 FAIRFAX DIMENSIONS



A-101 HENRY ADAMS ST. SUITE 380 SAN FRANCISCO, CA 94103 P-415.863.3406/800.426.6471 F-415.863.3530 W-WWW.IAPSF.COM E-INFO@IAPSF.COM

Metro Collection

Clean, elegant, and distinctively modern

The Metro Collection was born out of a desire to do something that would work with current architecture, but wouldn't feel cold and featureless. We gave each size a seductive curve, then a simple reveal to emphasize the shape. Whether in FRP fiberglass, metal infused, or GFRC Concrete, you'll find that Metro works in most urban settings.




- Lightweight FRP fiberglass and GFRC are designed to be durable despite low weight - even for heavy-traffic locations
- Coordinates with our self-watering container irrigation products
- Metallic FRP finishes will naturally weather over time, like metal containers
- Round, square and rectangular sizes from 18" to 60", with customization available
- Matching ash, trash available



Materials & Finishes - Metal Infused finishes (Aluminum, Bronze, Copper and Iron) combine the light weight and durability of FRP with the natural patina of real metal. The metal will oxidize naturally, depending on the location and condition of the installation. For those that love the look of the metal but want to keep the color the way it starts, we offer a Metal Matched Paint that simulates the color. Our economical standard paint finishes use a high-quality industrial grade acrylic enamel in a variety of architectural colors.



For more information about the Metro Collection, visit tournesolsiteworks.com/product-metro-collection.html


Tournesol tournesolsiteworks.com
 SITE WORKS 800.542.2282



milwaukee 333 East Chicago Street
 Milwaukee, Wisconsin 53202
 tel 414 271 5350 fax 414 271 7794

 madison 222 West Washington Ave, Suite 650
 Madison, Wisconsin 53703
 tel 608 442 5350 fax 608 442 6680

KEY PLAN

ISSUANCE AND REVISIONS

PLAN COMMISSION APPROVAL SET

| # | DATE | DESCRIPTION |
|---|------|-------------|
| | | |

PROGRESS DOCUMENTS

These documents reflect progress and intent and may be subject to change, including additional detail. These are not final construction documents and should not be used for final bidding or construction-related purposes.

PROJECT INFORMATION

309 W. JOHNSON STREET
MADISON, WI



PROJECT NUMBER: 11418
PROJECT MANAGER: CG

SHEET INFORMATION

DATE: 10/15/2012

Cut sheets

SHEET NAME: **L301**

SHEET NUMBER:



DERO BIKE HITCH

- High security
- Great for sidewalk placement
- One unit parks two bikes

The Dero Bike Hitch is an attractive and space efficient bike rack. The Dero Bike Hitch was specifically designed for sidewalks and other narrow space applications. The rack's design restricts bikes to parking parallel with the rack so bikes won't protrude out into the sidewalk or street.



Your Logo Here!

We can include your organization's logo in the center of a specially designed Dero Bike Hitch. Contact us for more details on this unique option.



www.dero.com 1.800.290.4915



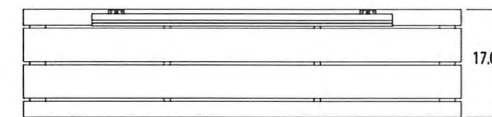
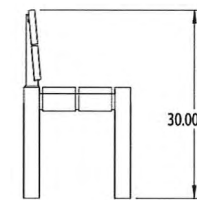
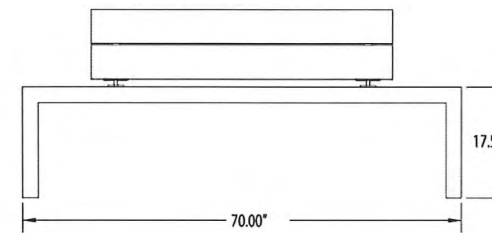
BENCHES



T 800-716-5506
F 877-260-9393
WWW.MAGLIN.COM
SALES@MAGLIN.COM

MLB1050W

- MATERIALS:** Bench frame is made from solid steel angle. The seat is constructed using Ipe.
- FINISH:** All steel components are protected with E-Coat rust proofing. The Maglin Powdercoat System provides a durable finish on all metal surfaces.
- INSTALLATION:** The bench is delivered pre-assembled. Holes (0.5") are provided in each foot for securing to base.
- TO SPECIFY:** Select MLB1050W
Choose:
- Powdercoat Color
- OPTIONS:** - Recycled Plastic Seat and Back (MLB1050R)
- COMPLEMENTARY PRODUCTS:**
- MLB1050BW
- MLPT1050W
- DIMENSIONS:** Height: 30.00" (76.2 cm)
Length: 70.00" (177.8 cm)
Depth: 17.00" (43.2 cm)
Weight: 131lbs (59.4 kg)



-All drawings, specifications, design and details on this page remain the property of Maglin Site Furniture Inc. and may not be used without Maglin authorization.
-Details and specifications may vary due to continuing improvements of our products.

* MAGLIN is a registered trade mark of Maglin Site Furniture Inc.



milwaukee 333 East Chicago Street
Milwaukee, Wisconsin 53202
tel 414 271 5350 fax 414 271 7794

madison 222 West Washington Ave, Suite 650
Madison, Wisconsin 53703
tel 608 442 5350 fax 608 442 6680

KEY PLAN



ISSUANCE AND REVISIONS

PLAN COMMISSION APPROVAL SET

| # | DATE | DESCRIPTION |
|---|------|-------------|
| | | |

PROGRESS DOCUMENTS

These documents reflect progress and intent and may be subject to change, including additional detail. These are not final construction documents and should not be used for final bidding or construction-related purposes.

PROJECT INFORMATION

309 W. JOHNSON STREET
MADISON, WI



PROJECT NUMBER: 11418
PROJECT MANAGER: CG

SHEET INFORMATION

DATE: 10/15/2012

SHEET NAME:

SHEET NUMBER:

Cut sheets

L302

1

2

3

4

5

6

7

8

N. HENRY STREET

STATE STREET

FABRIC SCREEN WITH GRAPHICS ATTACHED TO CONSTRUCTION FENCE

EXISTING 3-STORY BRICK BUILDING

EXISTING 2-STORY BRICK BUILDING

DEMOLISH: 2-STORY BRICK BUILDING

DEMOLISH: 1-STORY BRICK BUILDING

DEMOLISH: 2-STORY BRICK BUILDING W/ WALK-OUT BASEMENT ON SOUTHEAST SIDE

DEMOLISH: 2-STORY BRICK FIRE DEPT. ADMIN. BUILDING W/ DRIVE-OUT BASEMENT ON SOUTHEAST SIDE

EXISTING 3-STORY FIRE STATION (CITY OF MADISON STATION #1)

W. JOHNSON STREET

W. DAYTON STREET

D

C

B

A



CONSTRUCTION FENCE GRAPHICS
1/4" = 1'-0"

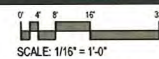


milwaukee 333 East Chicago Street
Milwaukee, Wisconsin 53202
tel 414 271 5350 fax 414 271 7794

madison 222 West Washington Ave, Suite 650
Madison, Wisconsin 53703
tel 608 442 5350 fax 608 442 6680

eppstein uhen : architects

KEY PLAN



ISSUANCE AND REVISIONS

PLAN COMMISSION APPROVAL SET

| # | DATE | DESCRIPTION |
|---|------|-------------|
| | | |

PROGRESS DOCUMENTS

These documents reflect progress and intent and may be subject to change, including additional detail. These are not final construction documents and should not be used for final bidding or construction-related purposes.

PROJECT INFORMATION

309 W. JOHNSON STREET
MADISON, WI



PROJECT NUMBER: 11418
PROJECT MANAGER: CG

SHEET INFORMATION

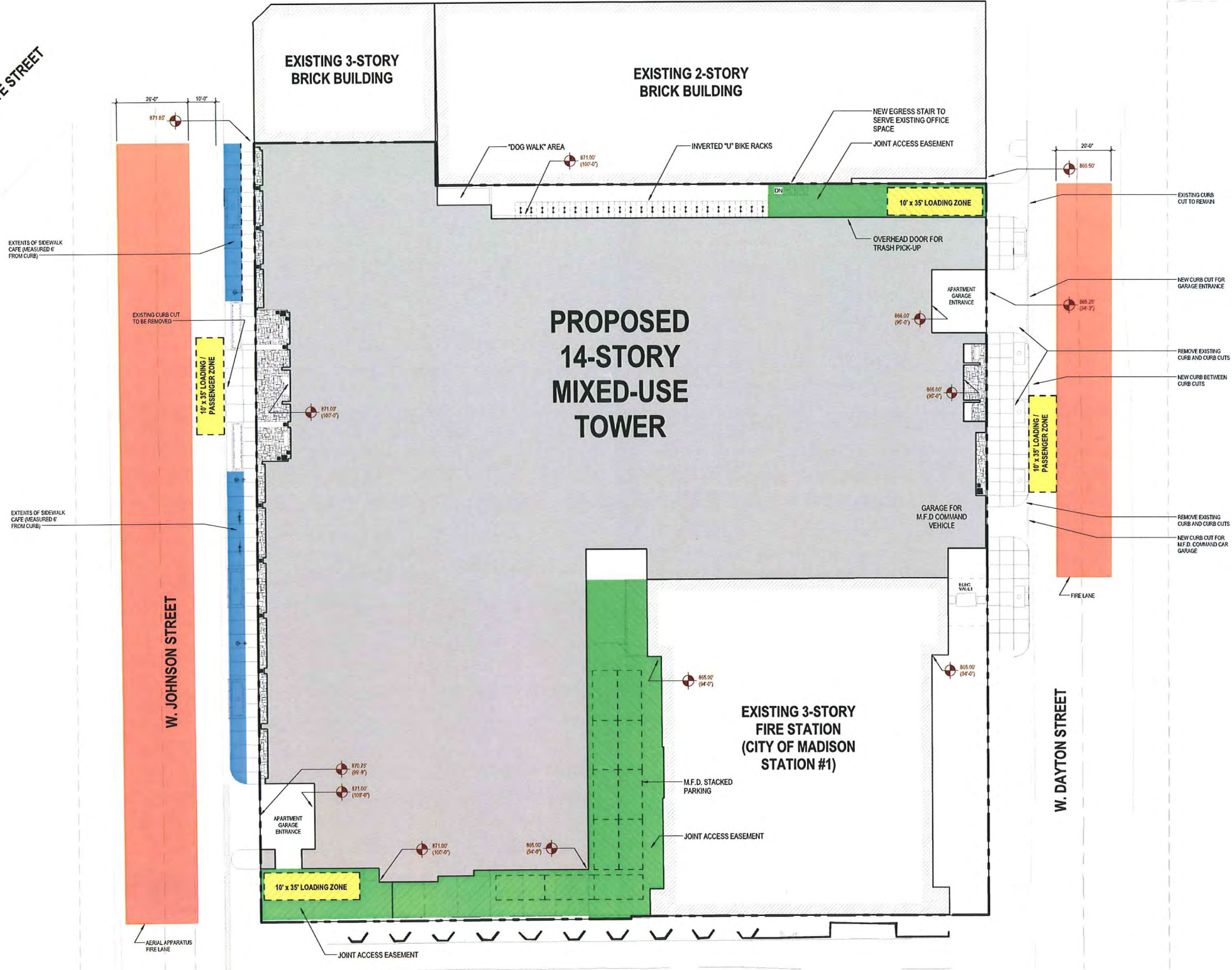
DATE: 10/15/2012

SHEET NAME: EXISTING SITE PLAN
AS101
SHEET NUMBER:

© Eppstein Uhen Architects, Inc.

N. HENRY STREET

STATE STREET



D

C

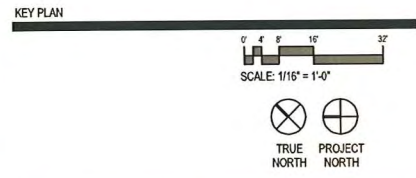
B

A



milwaukee 333 East Chicago Street
Milwaukee, Wisconsin 53202
tel 414 271 5350 fax 414 271 7794

madison 222 West Washington Ave, Suite 650
Madison, Wisconsin 53703
tel 608 442 5350 fax 608 442 6680



ISSUANCE AND REVISIONS

PLAN COMMISSION APPROVAL SET

| # | DATE | DESCRIPTION |
|---|------|-------------|
| | | |

PROGRESS DOCUMENTS

These documents reflect progress and intent and may be subject to change, including additional detail. These are not final construction documents and should not be used for final bidding or construction-related purposes.

PROJECT INFORMATION

309 W. JOHNSON STREET
MADISON, WI



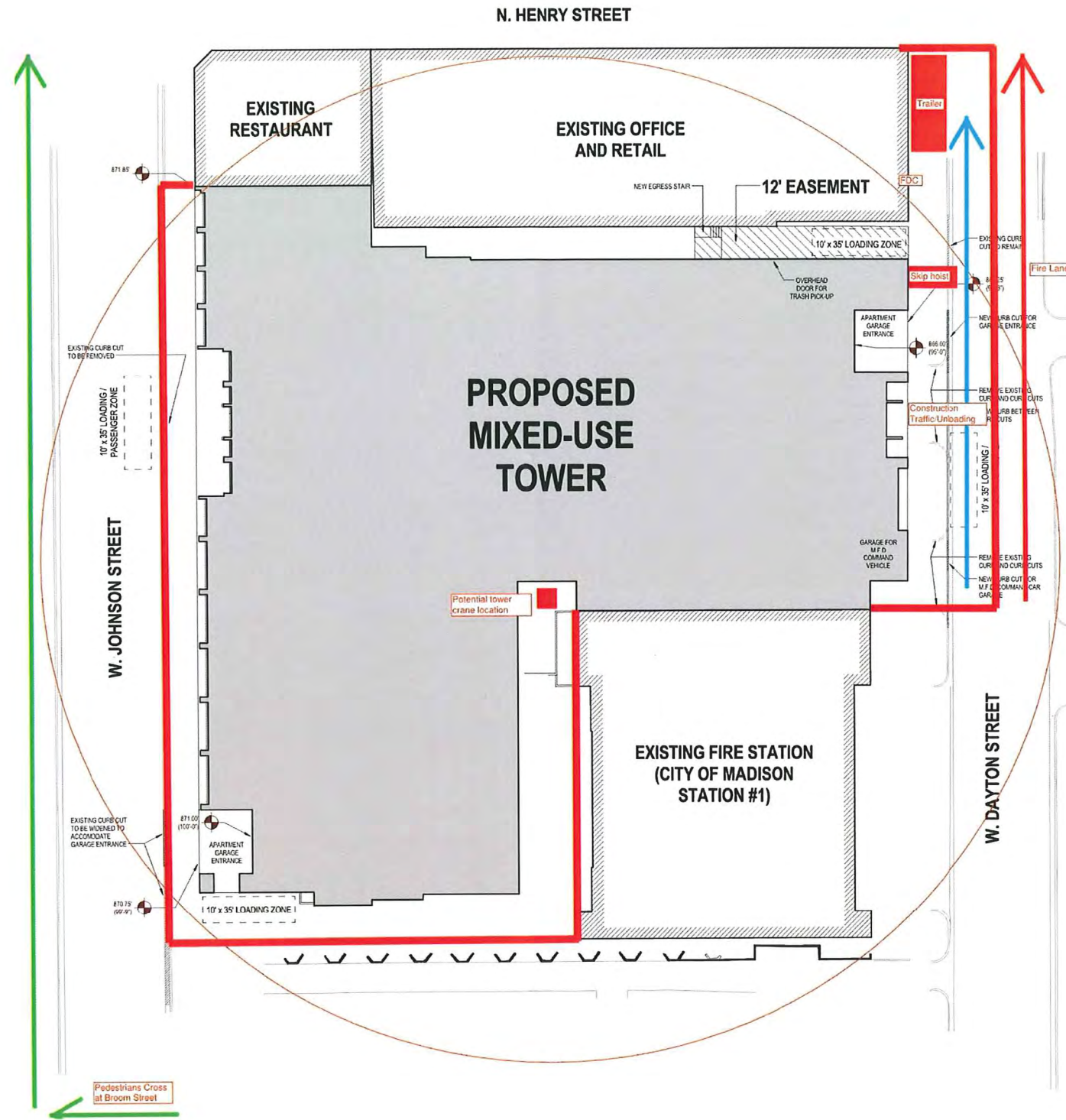
SHEET INFORMATION

DATE: 10/15/2012

ARCHITECTURAL SITE PLAN
AS102

SHEET NAME:
SHEET NUMBER:

© Eppstein Uhen Architects, Inc.



1 SITE LOGISTICS PLAN
1" = 20' 0"



milwaukee 333 East Chicago Street
Milwaukee, Wisconsin 53202
tel 414 271 5350 fax 414 271 7794

madison 222 West Washington Ave, Suite 650
Madison, Wisconsin 53703
tel 608 442 5350 fax 608 442 6680

KEY PLAN

SCALE: 1" = 20'

TRUE NORTH PROJECT NORTH

ISSUANCE AND REVISIONS

PLAN COMMISSION APPROVAL SET

| # | DATE | DESCRIPTION |
|---|------|-------------|
| | | |

PROGRESS DOCUMENTS

These documents reflect progress and intent and may be subject to change, including additional detail. These are not final construction documents and should not be used for final bidding or construction-related purposes.

PROJECT INFORMATION

309 W. JOHNSON STREET
MADISON, WI

PROJECT NUMBER: 11418
PROJECT MANAGER: CG

SHEET INFORMATION

DATE: 10/15/2012

SHEET NAME: SITE LOGISTICS PLAN
AS103

SHEET NUMBER:

© Epstein Uhen Architects, Inc.

1

2

3

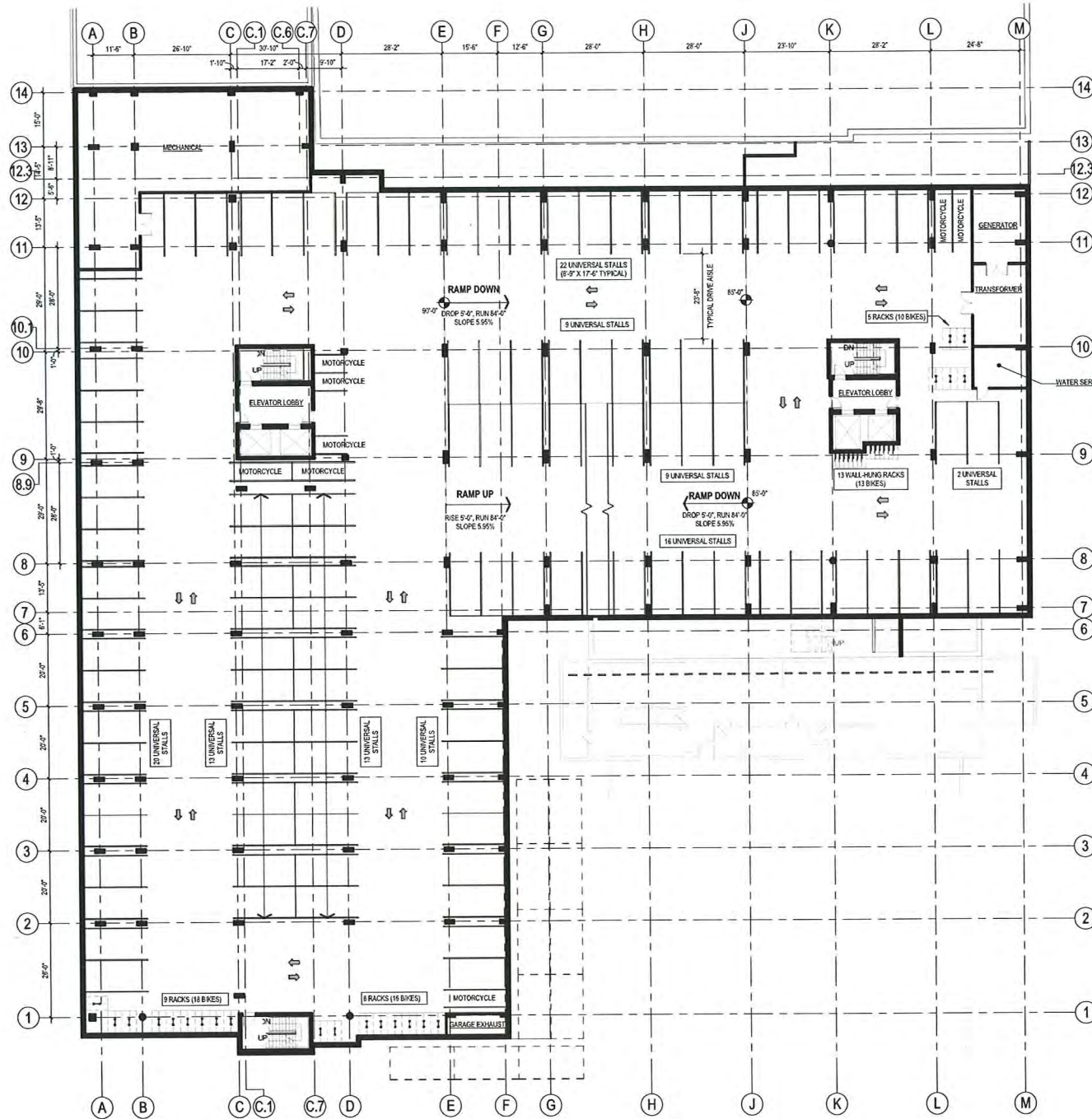
4

5

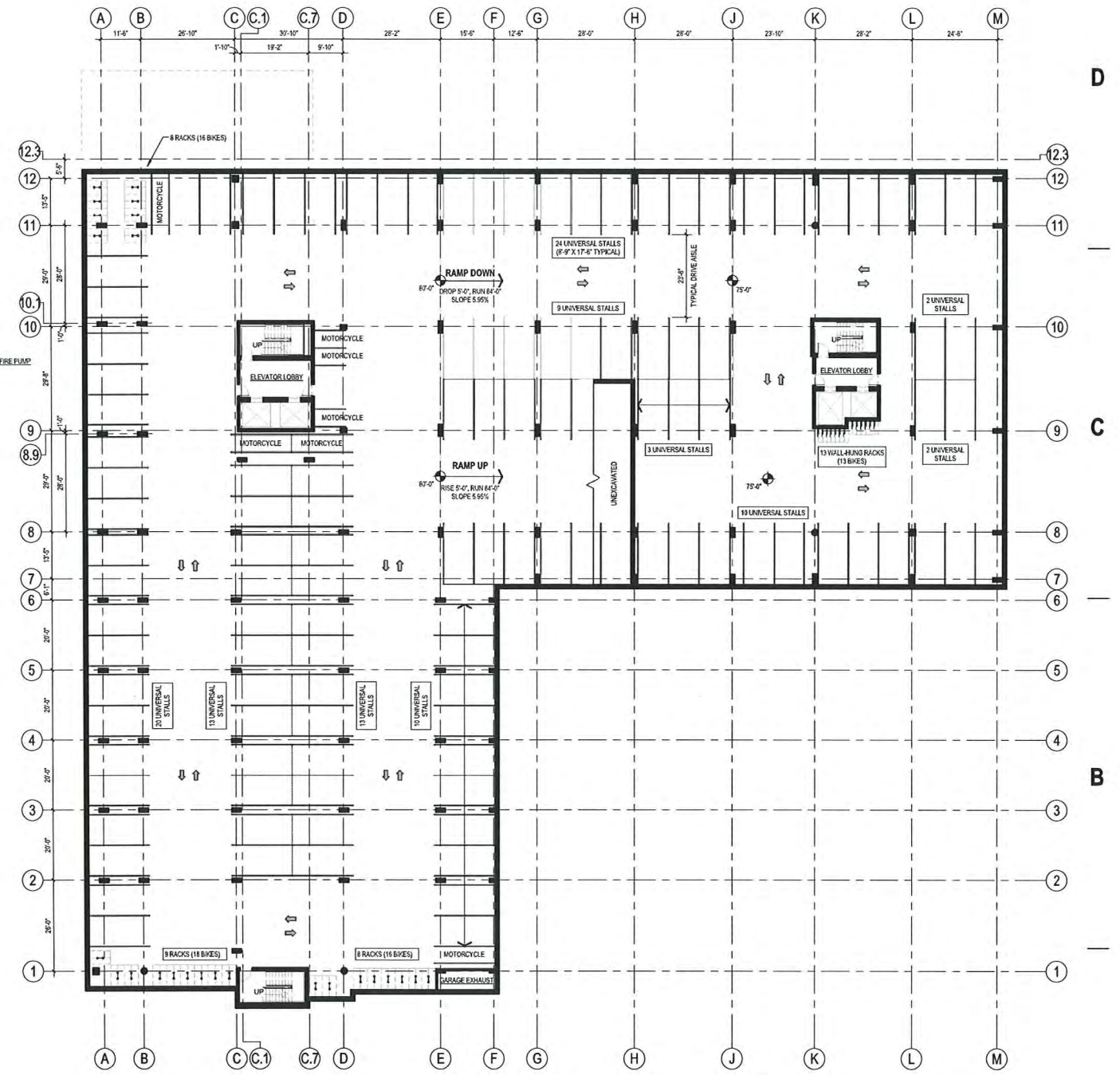
6

7

8



2 LOWER LEVEL 1 OVERALL
1/16" = 1'-0"



1 LOWER LEVEL 2 OVERALL
1/16" = 1'-0"

D
C
B
A

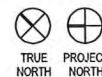
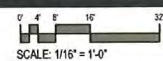


milwaukee 333 East Chicago Street
Milwaukee, Wisconsin 53202
tel 414 271 5350 fax 414 271 7794

madison 222 West Washington Ave, Suite 650
Madison, Wisconsin 53703
tel 608 442 5350 fax 608 442 6680

eppstein uhen : architects

KEY PLAN



ISSUANCE AND REVISIONS

PLAN COMMISSION APPROVAL SET

| # | DATE | DESCRIPTION |
|---|------|-------------|
| | | |

PROGRESS DOCUMENTS

These documents reflect progress and intent and may be subject to change, including additional detail. These are not final construction documents and should not be used for final bidding or construction-related purposes.

PROJECT INFORMATION

309 W. JOHNSON STREET
MADISON, WI



PROJECT NUMBER: 11418
PROJECT MANAGER: CG

SHEET INFORMATION

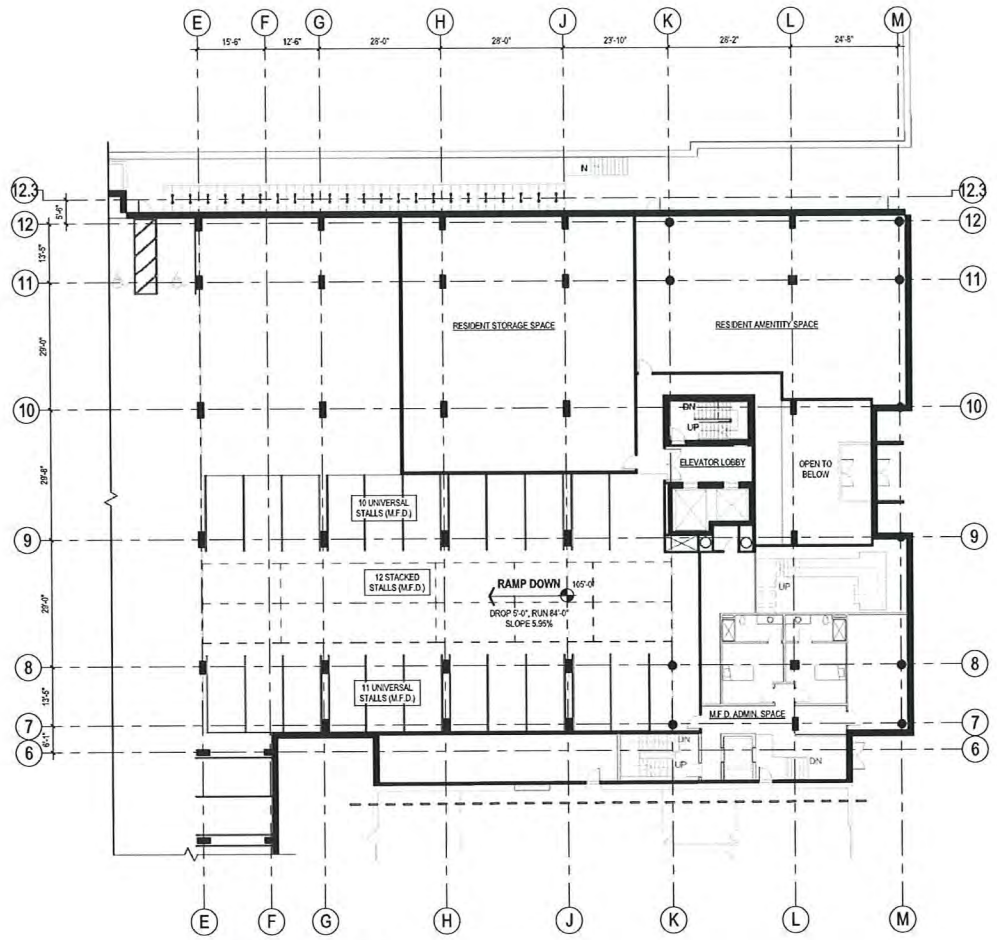
DATE: 10/15/2012

SHEET NAME:

SHEET NUMBER:

FLOOR PLANS
A101.1

© Eppstein Uhen Architects, Inc.



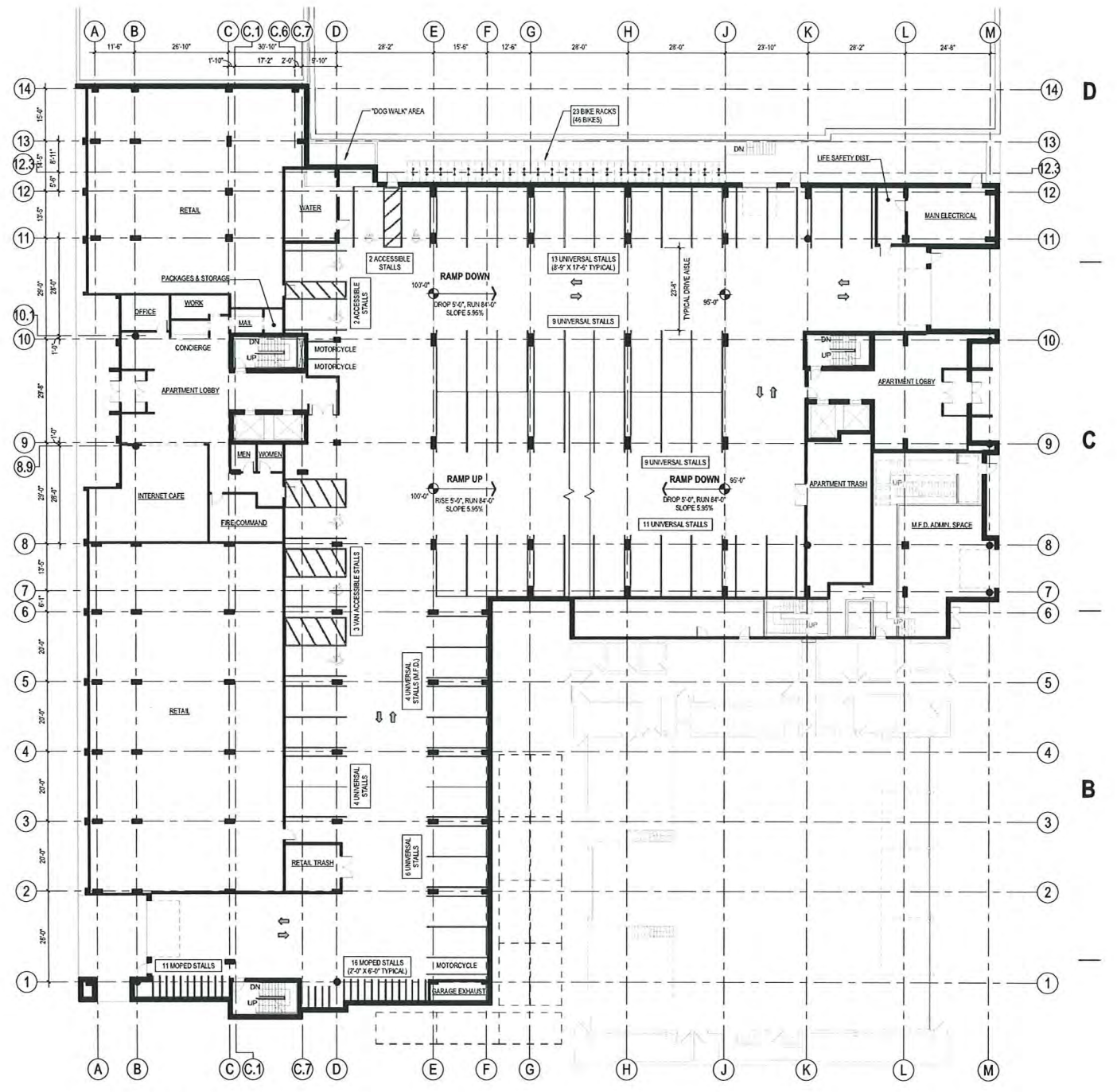
2 MEZZANINE LEVEL PLAN
1/16" = 1'-0"

| PARKING - NON-MFD VEHICLES | | | |
|----------------------------|------------------|-------|----------|
| Level | Stall Type | Count | Comments |
| LOWER LEVEL 2 | UNIVERSAL | 121 | |
| LOWER LEVEL 1 | UNIVERSAL | 113 | |
| GROUND FLOOR | ACCESSIBLE | 4 | |
| GROUND FLOOR | ACCESSIBLE - VAN | 3 | |
| GROUND FLOOR | UNIVERSAL | 30 | |
| GROUND FLOOR | UNIVERSAL | 4 | |
| Grand total | | 275 | |

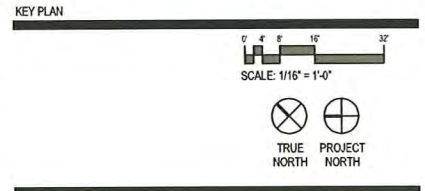
| PARKING - BICYCLES | | | |
|--------------------|---------------------------|-----------------|-------------|
| LEVEL | RACK TYPE | NUMBER OF RACKS | TOTAL BIKES |
| LOWER LEVEL 2 | DOUBLE BIKE - FLOOR MOUNT | 25 | 50 |
| LOWER LEVEL 2 | SINGLE BIKE - WALL MOUNT | 13 | 13 |
| LOWER LEVEL 1 | DOUBLE BIKE - FLOOR MOUNT | 22 | 44 |
| LOWER LEVEL 1 | SINGLE BIKE - WALL MOUNT | 13 | 13 |
| GROUND FLOOR | DOUBLE BIKE - FLOOR MOUNT | 23 | 46 |
| Grand total | | 96 | 166 |

| PARKING - MFD VEHICLES | | | |
|------------------------|------------|-------|-------------------|
| Level | Stall Type | Count | Comments |
| GROUND FLOOR | STACKED | 11 | BEHIND STATION #1 |
| GROUND FLOOR | UNIVERSAL | 4 | |
| MEZZANINE LEVEL | STACKED | 12 | |
| MEZZANINE LEVEL | UNIVERSAL | 21 | |
| Grand total | | 48 | |

| PARKING - MOPEDS & MOTORCYCLES | | | |
|--------------------------------|------------|-------|----------|
| LEVEL | STALL TYPE | COUNT | Comments |
| LOWER LEVEL 2 | MOTORCYCLE | 7 | |
| LOWER LEVEL 1 | MOTORCYCLE | 8 | |
| GROUND FLOOR | MOPED | 27 | |
| GROUND FLOOR | MOTORCYCLE | 3 | |
| Grand total | | 45 | |



1 GROUND FLOOR PLAN
1/16" = 1'-0"



ISSUANCE AND REVISIONS
PLAN COMMISSION APPROVAL SET
 # | DATE | DESCRIPTION

PROGRESS DOCUMENTS
 These documents reflect progress and intent and may be subject to change, including additional detail. These are not final construction documents and should not be used for final bidding or construction-related purposes.

PROJECT INFORMATION
**309 W. JOHNSON STREET
 MADISON, WI**

HOVDE PROPERTIES
 PROJECT NUMBER: 11418
 PROJECT MANAGER: CG

SHEET INFORMATION
 DATE: 10/15/2012

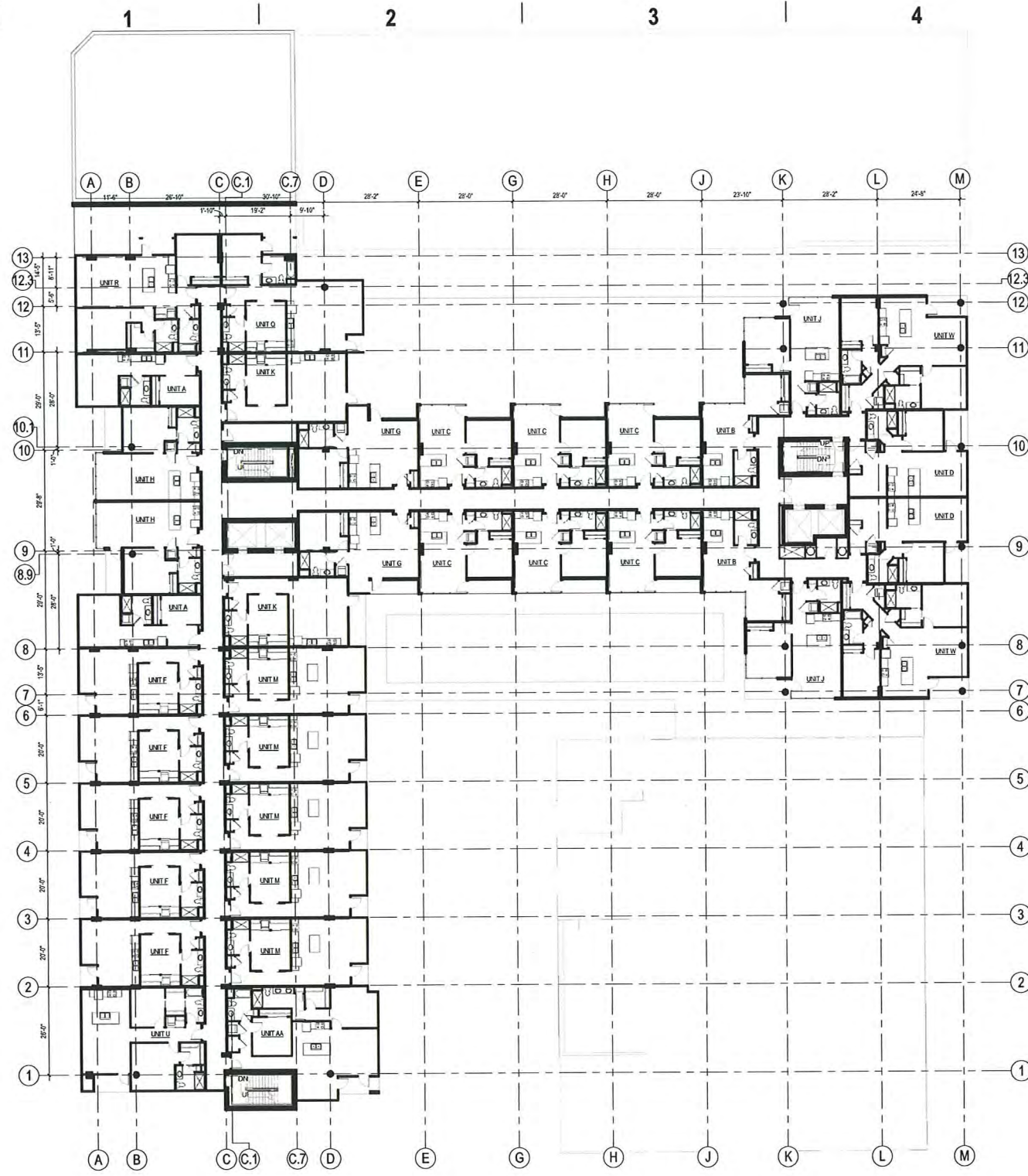
SHEET NAME:
**FLOOR PLANS
 A102.1**
 SHEET NUMBER:



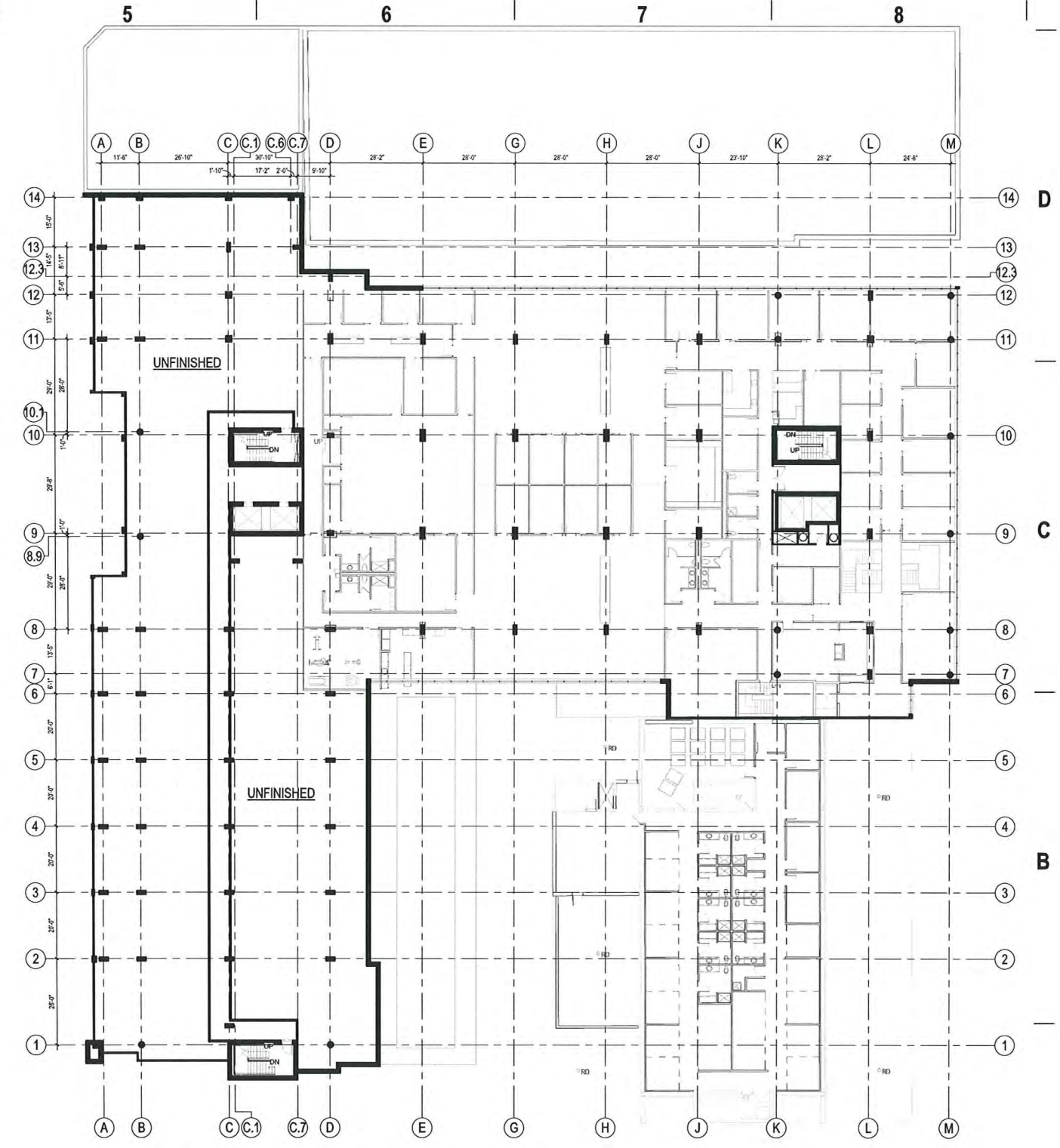
milwaukee 333 East Chicago Street
 Milwaukee, Wisconsin 53202
 tel 414 271 5350 fax 414 271 7794

madison 222 West Washington Ave, Suite 650
 Madison, Wisconsin 53703
 tel 608 442 5350 fax 608 442 6680

eppstein uhen : architects



2 THIRD FLOOR PLAN (FIFTH FLOOR SIMILAR)
1/16" = 1'-0"

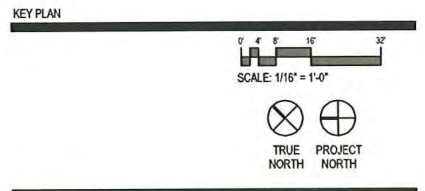


1 SECOND FLOOR PLAN
1/16" = 1'-0"



milwaukee 333 East Chicago Street
Milwaukee, Wisconsin 53202
tel 414 271 5350 fax 414 271 7794

madison 222 West Washington Ave, Suite 650
Madison, Wisconsin 53703
tel 608 442 5350 fax 608 442 6680



ISSUANCE AND REVISIONS

PLAN COMMISSION APPROVAL SET

| # | DATE | DESCRIPTION |
|---|------|-------------|
| | | |

PROGRESS DOCUMENTS

These documents reflect progress and intent and may be subject to change, including additional detail. These are not final construction documents and should not be used for final bidding or construction-related purposes.

PROJECT INFORMATION

309 W. JOHNSON STREET
MADISON, WI

HOVDE PROPERTIES

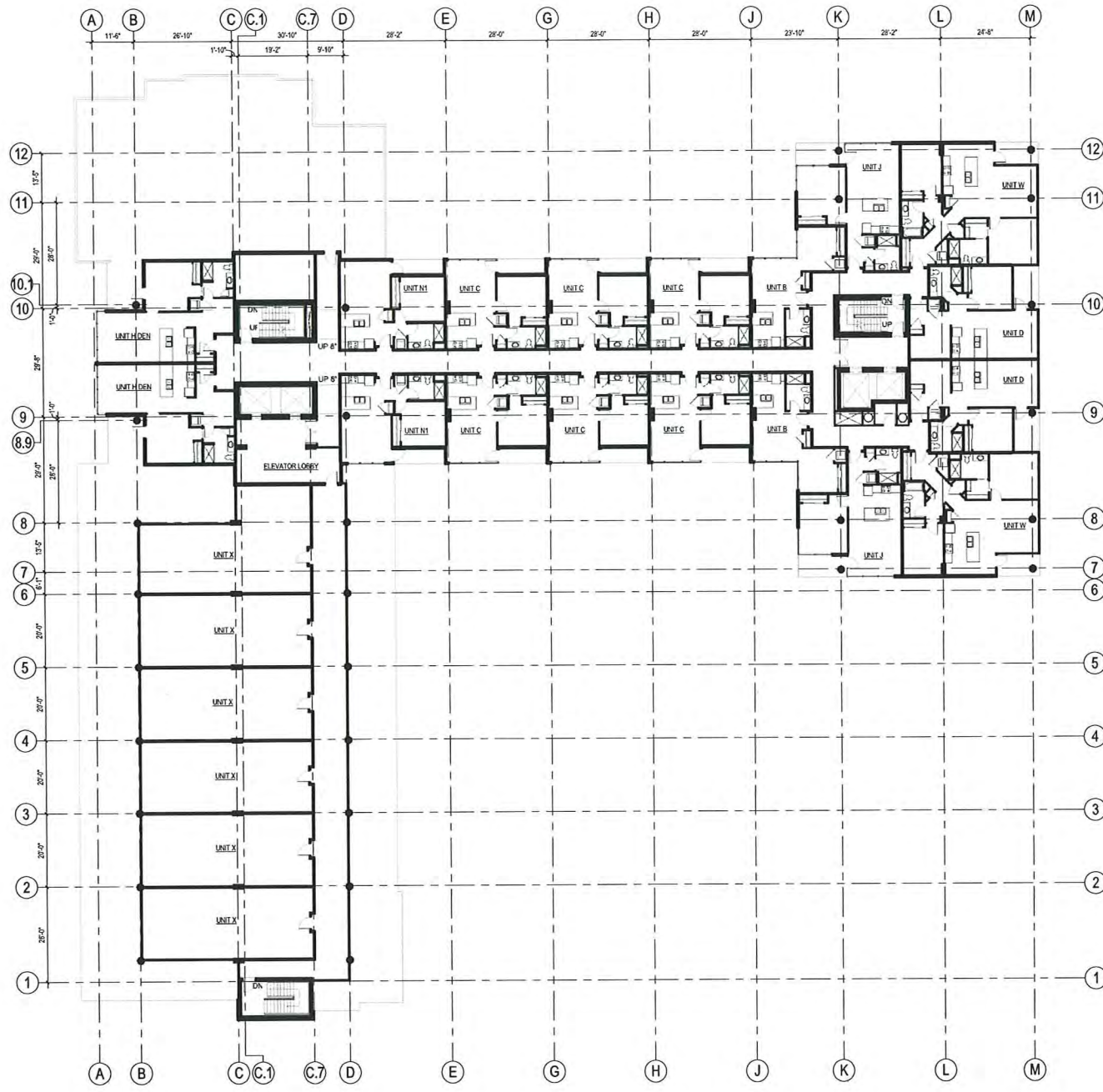
PROJECT NUMBER: 11418
PROJECT MANAGER: CG

SHEET INFORMATION

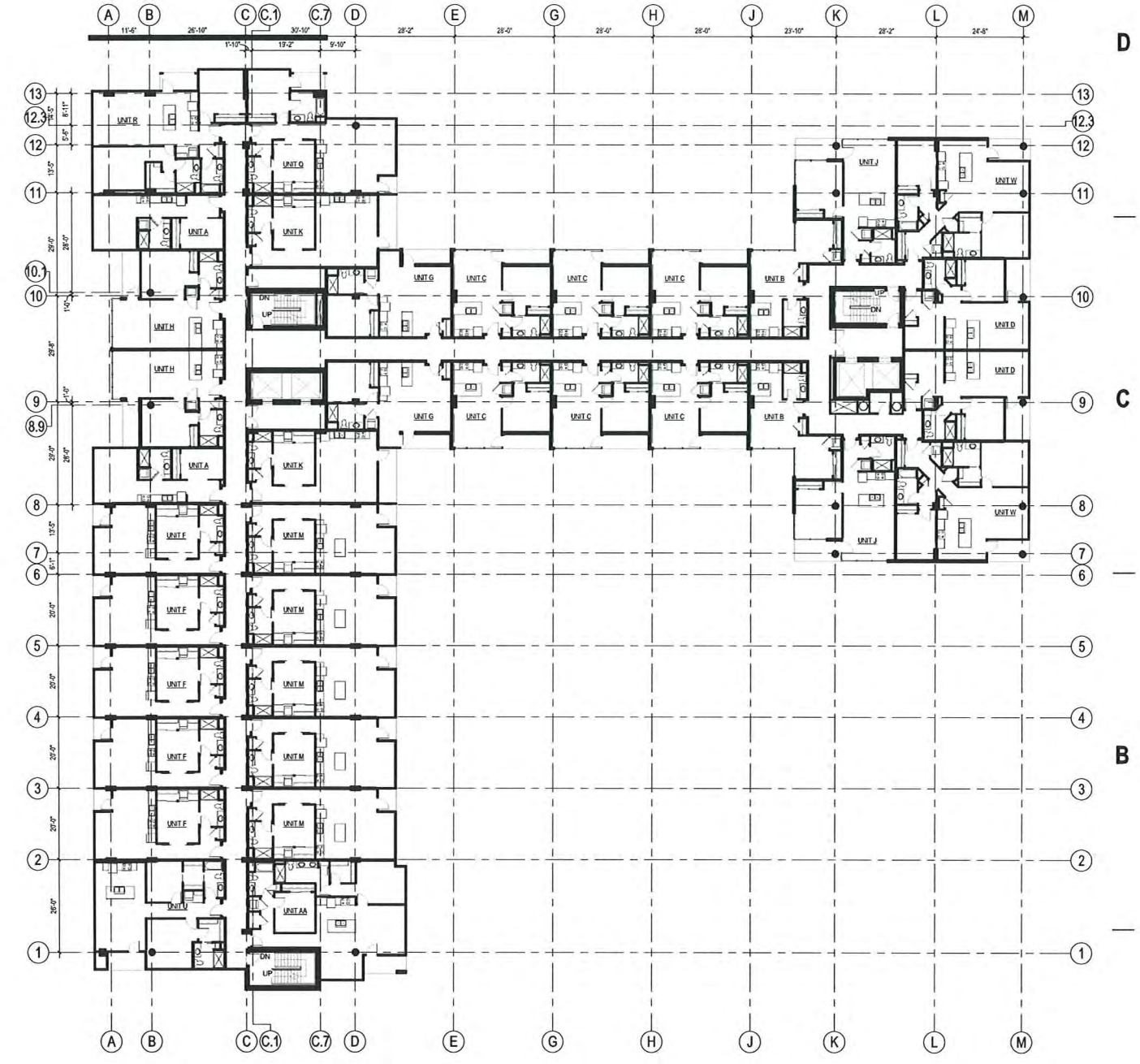
DATE: 10/15/2012

SHEET NAME: **FLOOR PLANS A103.1**

SHEET NUMBER:



2 SEVENTH FLOOR PLAN
1/16" = 1'-0"



1 FOURTH FLOOR PLAN (SIXTH FLOOR SIMILAR)
1/16" = 1'-0"

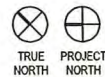
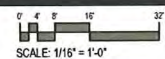


milwaukee 333 East Chicago Street
Milwaukee, Wisconsin 53202
tel 414 271 5350 fax 414 271 7794

madison 222 West Washington Ave, Suite 650
Madison, Wisconsin 53703
tel 608 442 5350 fax 608 442 6680

eppstein uhen : architects

KEY PLAN



ISSUANCE AND REVISIONS

PLAN COMMISSION APPROVAL SET

| # | DATE | DESCRIPTION |
|---|------|-------------|
| | | |

PROGRESS DOCUMENTS

These documents reflect progress and intent and may be subject to change, including additional detail. These are not final construction documents and should not be used for final bidding or construction-related purposes.

PROJECT INFORMATION

309 W. JOHNSON STREET
MADISON, WI



PROJECT NUMBER: 11418
PROJECT MANAGER: CG

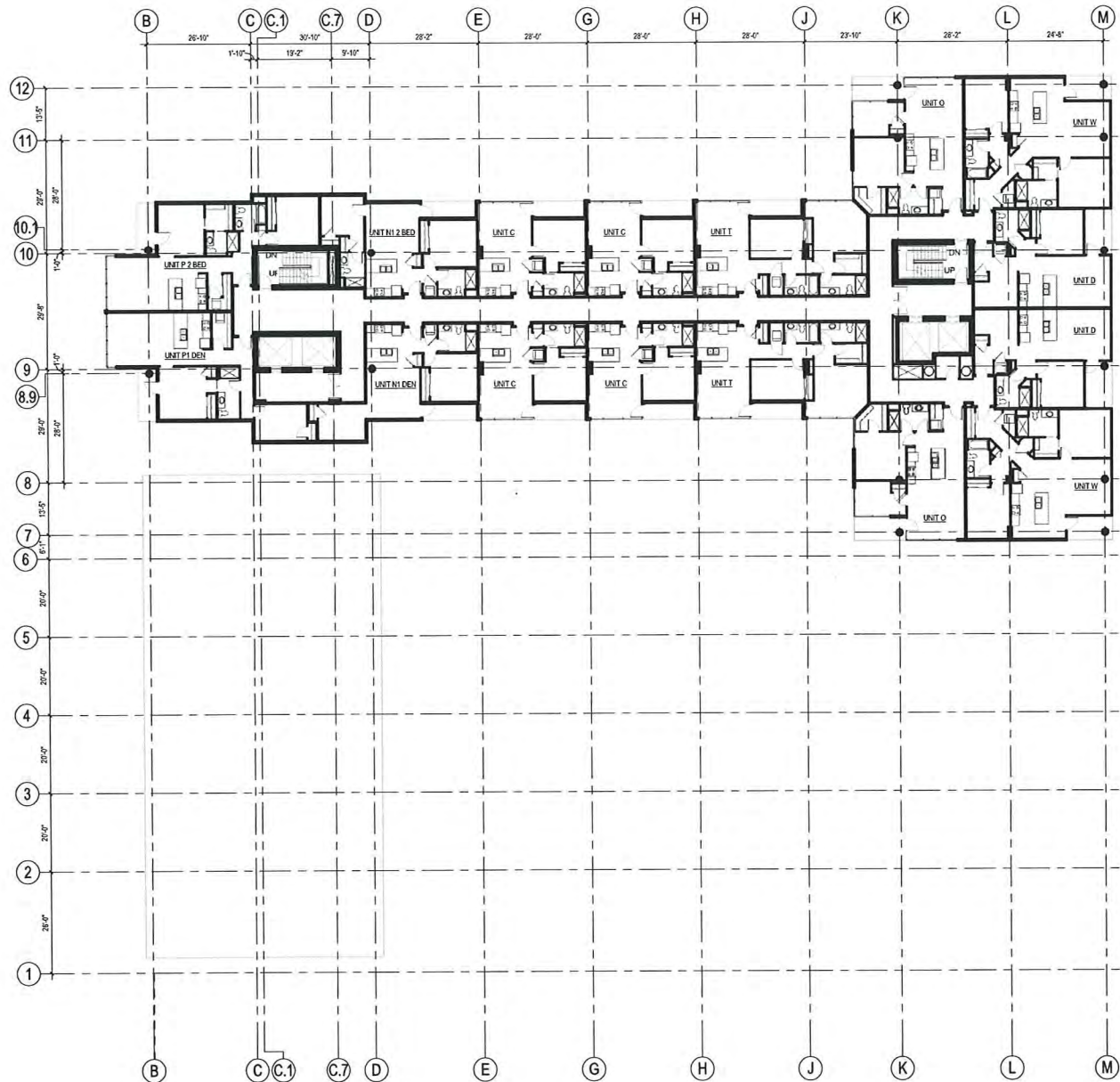
SHEET INFORMATION

DATE: 10/15/2012

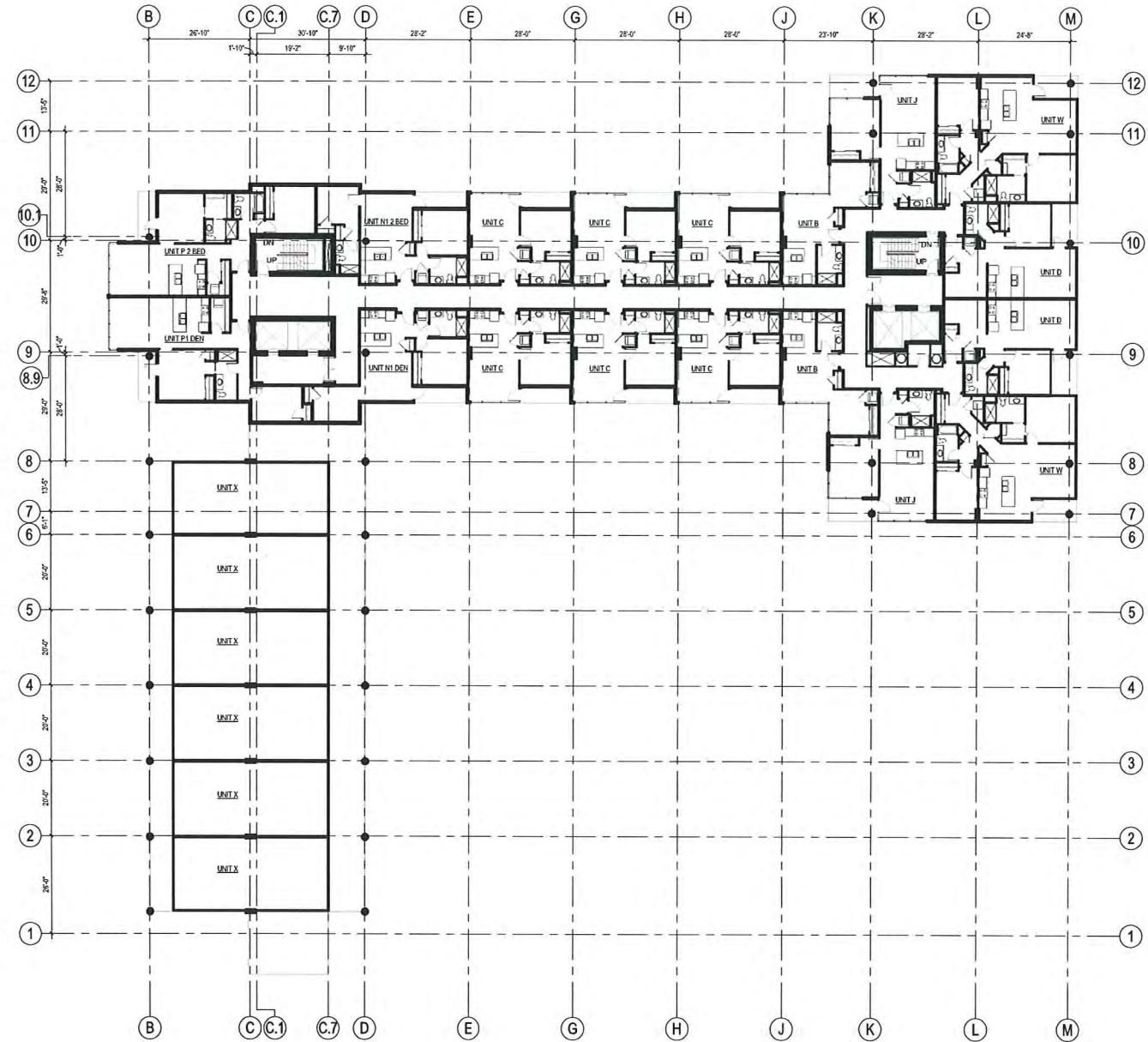
SHEET NAME:

SHEET NUMBER:

FLOOR PLANS
A104.1



2 NINTH FLOOR PLAN (TENTH & ELEVENTH FLOORS SIMILAR)
1/16" = 1'-0"



1 EIGHTH FLOOR PLAN
1/16" = 1'-0"

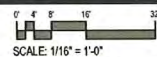


epstein uhen : architects

milwaukee 333 East Chicago Street
Milwaukee, Wisconsin 53202
tel 414 271 5350 fax 414 271 7794

madison 222 West Washington Ave, Suite 650
Madison, Wisconsin 53703
tel 608 442 5350 fax 608 442 6680

KEY PLAN



SCALE: 1/16" = 1'-0"



TRUE NORTH PROJECT NORTH

ISSUANCE AND REVISIONS

PLAN COMMISSION APPROVAL SET

| # | DATE | DESCRIPTION |
|---|------|-------------|
| | | |

PROGRESS DOCUMENTS

These documents reflect progress and intent and may be subject to change, including additional detail. These are not final construction documents and should not be used for final bidding or construction-related purposes.

PROJECT INFORMATION

309 W. JOHNSON STREET
MADISON, WI



PROJECT NUMBER: 11418
PROJECT MANAGER: CG

SHEET INFORMATION

DATE: 10/15/2012

SHEET NAME:

SHEET NUMBER:

FLOOR PLANS
A105.1

1

2

3

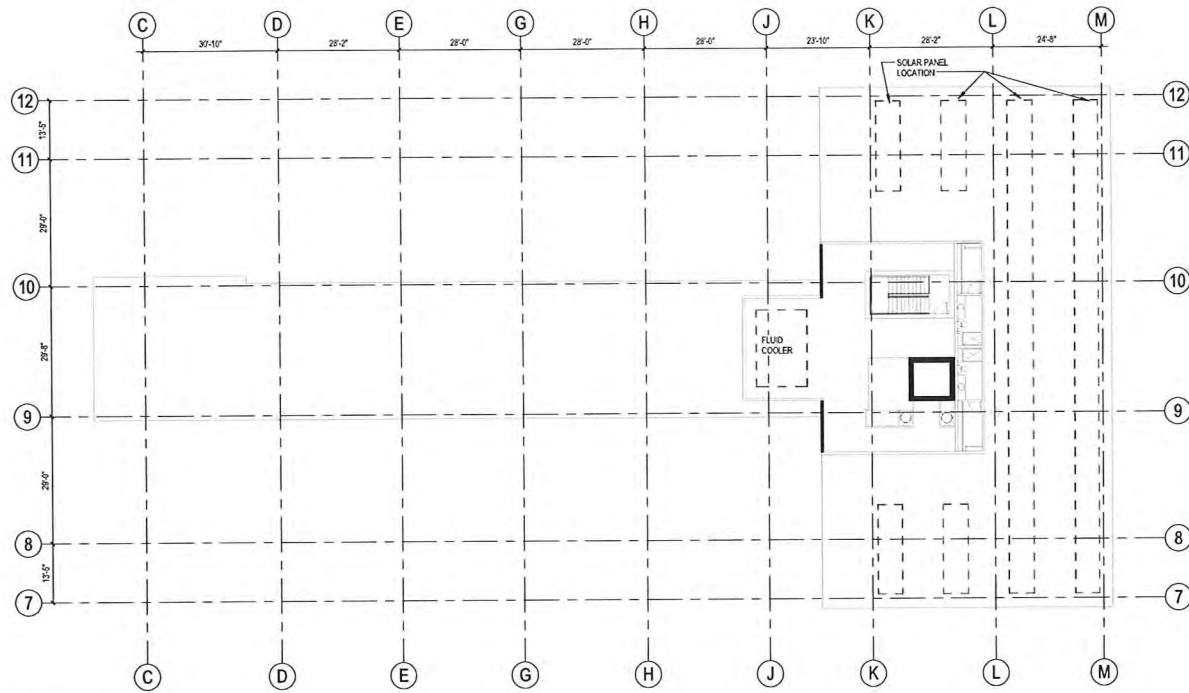
4

5

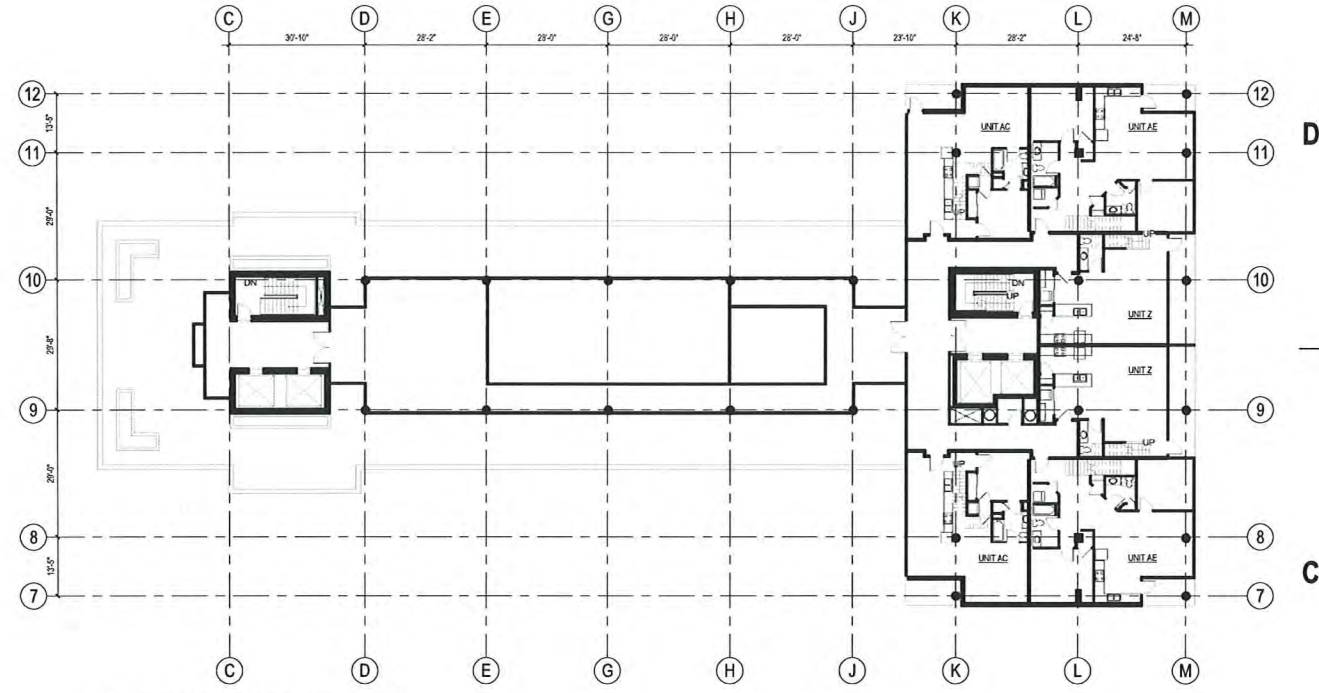
6

7

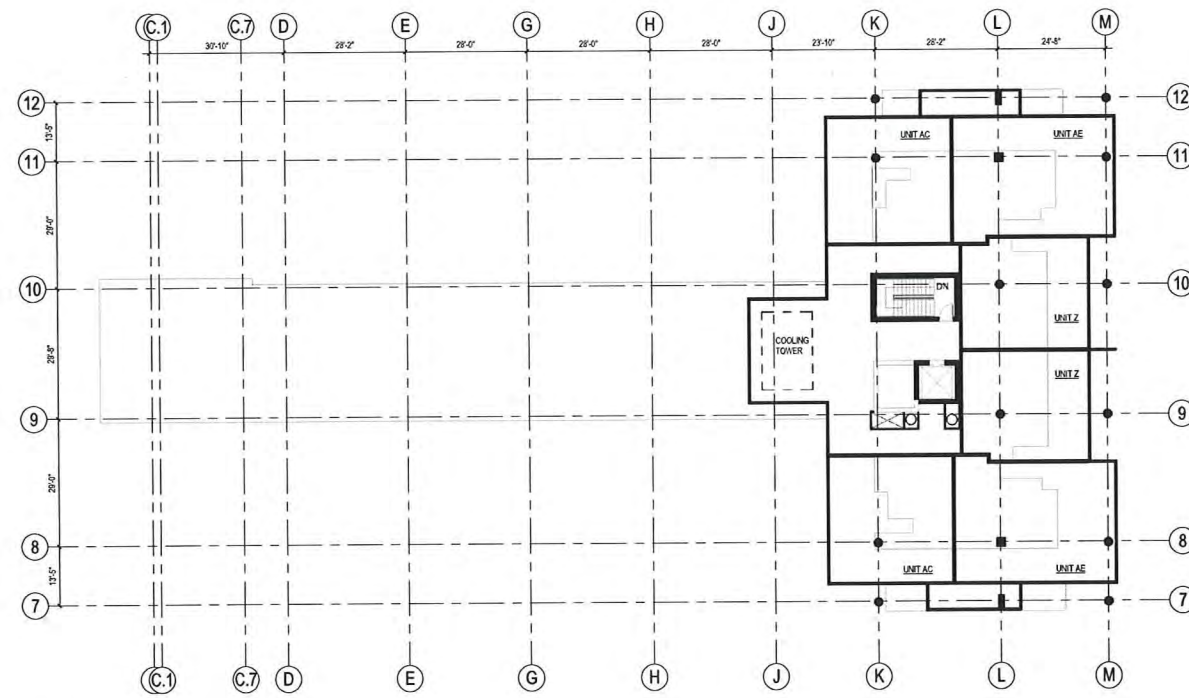
8



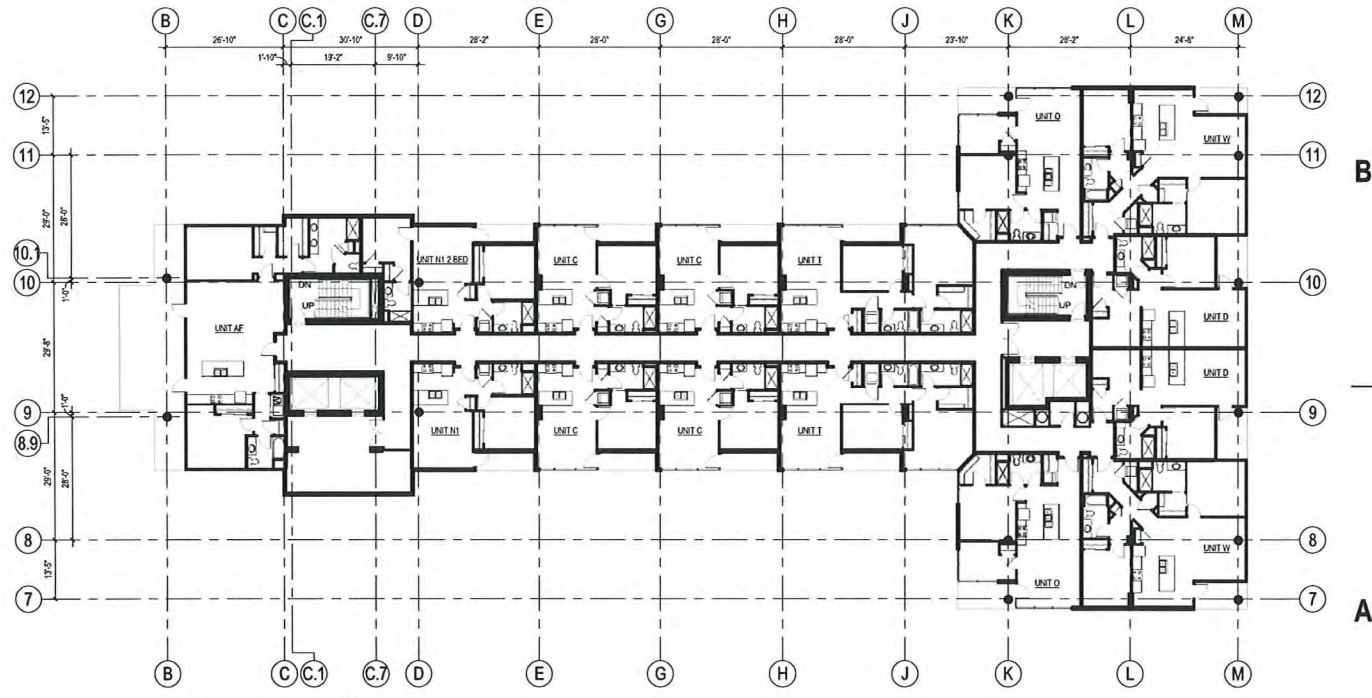
4 ROOF PLAN
1/16" = 1'-0"



2 THIRTEENTH FLOOR PLAN
1/16" = 1'-0"



3 FOURTEENTH FLOOR PLAN
1/16" = 1'-0"

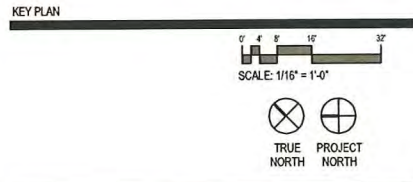


1 TWELFTH FLOOR PLAN
1/16" = 1'-0"



milwaukee 333 East Chicago Street
Milwaukee, Wisconsin 53202
tel 414 271 5350 fax 414 271 7794

madison 222 West Washington Ave, Suite 650
Madison, Wisconsin 53703
tel 608 442 5350 fax 608 442 6680



ISSUANCE AND REVISIONS

PLAN COMMISSION APPROVAL SET

| # | DATE | DESCRIPTION |
|---|------|-------------|
| | | |

PROGRESS DOCUMENTS

These documents reflect progress and intent and may be subject to change, including additional detail. These are not final construction documents and should not be used for final bidding or construction-related purposes.

PROJECT INFORMATION

309 W. JOHNSON STREET
MADISON, WI



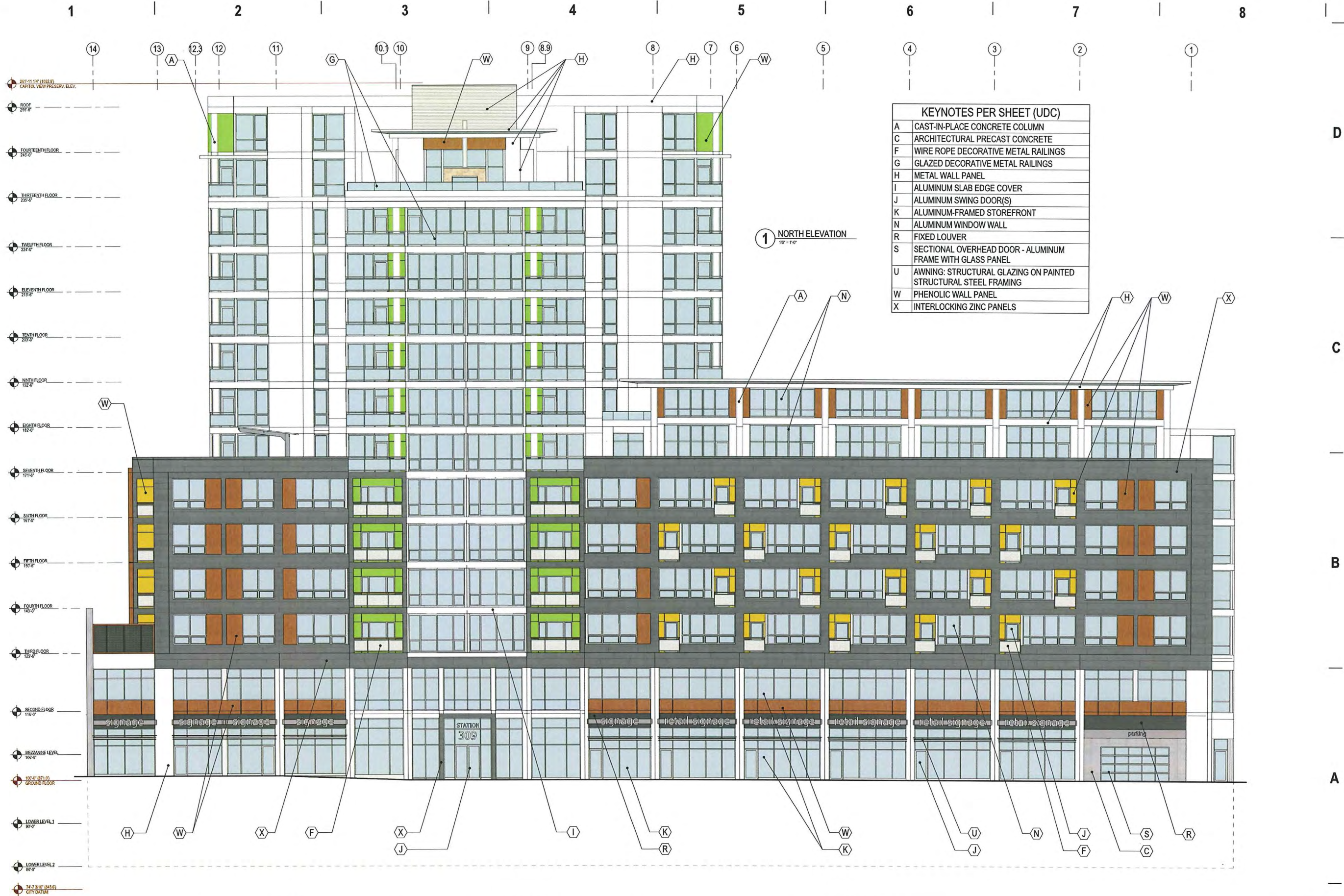
SHEET INFORMATION

DATE: 10/15/2012

SHEET NAME: **FLOOR PLANS A106.1**

SHEET NUMBER:

© Eppstein Uhen Architects, Inc.



KEYNOTES PER SHEET (UDC)

| | |
|---|--|
| A | CAST-IN-PLACE CONCRETE COLUMN |
| C | ARCHITECTURAL PRECAST CONCRETE |
| F | WIRE ROPE DECORATIVE METAL RAILINGS |
| G | GLAZED DECORATIVE METAL RAILINGS |
| H | METAL WALL PANEL |
| I | ALUMINUM SLAB EDGE COVER |
| J | ALUMINUM SWING DOOR(S) |
| K | ALUMINUM-FRAMED STOREFRONT |
| N | ALUMINUM WINDOW WALL |
| R | FIXED LOUVER |
| S | SECTIONAL OVERHEAD DOOR - ALUMINUM FRAME WITH GLASS PANEL |
| U | AWNING: STRUCTURAL GLAZING ON PAINTED STRUCTURAL STEEL FRAMING |
| W | PHENOLIC WALL PANEL |
| X | INTERLOCKING ZINC PANELS |

1 NORTH ELEVATION
1/8" = 1'-0"



milwaukee 333 East Chicago Street
Milwaukee, Wisconsin 53202
tel 414 271 5350 fax 414 271 7794

madison 222 West Washington Ave, Suite 650
Madison, Wisconsin 53703
tel 608 442 5350 fax 608 442 6680

eppstein uhen : architects



ISSUANCE AND REVISIONS

PLAN COMMISSION APPROVAL SET

| # | DATE | DESCRIPTION |
|---|------|-------------|
| | | |

PROGRESS DOCUMENTS

These documents reflect progress and intent and may be subject to change, including additional detail. These are not final construction documents and should not be used for final bidding or construction-related purposes.

PROJECT INFORMATION

309 W. JOHNSON STREET
MADISON, WI

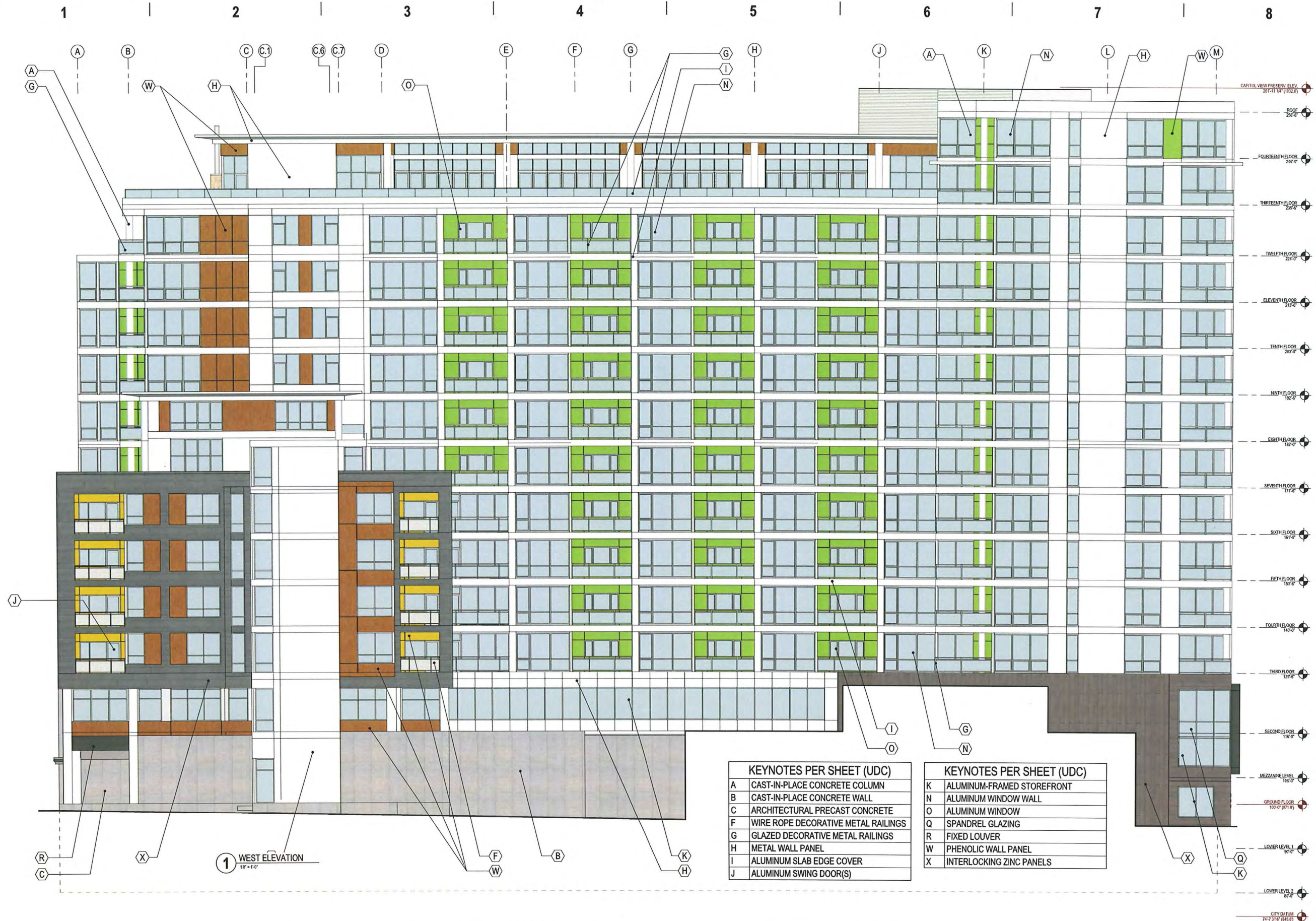


SHEET INFORMATION

DATE: 10/15/2012

SHEET NAME: NORTH ELEVATION
A201

SHEET NUMBER:



1 WEST ELEVATION
1/8" = 1'-0"

| KEYNOTES PER SHEET (UDC) | |
|--------------------------|-------------------------------------|
| A | CAST-IN-PLACE CONCRETE COLUMN |
| B | CAST-IN-PLACE CONCRETE WALL |
| C | ARCHITECTURAL PRECAST CONCRETE |
| F | WIRE ROPE DECORATIVE METAL RAILINGS |
| G | GLAZED DECORATIVE METAL RAILINGS |
| H | METAL WALL PANEL |
| I | ALUMINUM SLAB EDGE COVER |
| J | ALUMINUM SWING DOOR(S) |

| KEYNOTES PER SHEET (UDC) | |
|--------------------------|----------------------------|
| K | ALUMINUM-FRAMED STOREFRONT |
| N | ALUMINUM WINDOW WALL |
| O | ALUMINUM WINDOW |
| Q | SPANDREL GLAZING |
| R | FIXED LOUVER |
| W | PHENOLIC WALL PANEL |
| X | INTERLOCKING ZINC PANELS |



milwaukee 333 East Chicago Street
Milwaukee, Wisconsin 53202
tel 414 271 5350 fax 414 271 7794

madison 222 West Washington Ave, Suite 650
Madison, Wisconsin 53703
tel 608 442 5350 fax 608 442 6680



ISSUANCE AND REVISIONS

PLAN COMMISSION APPROVAL SET

| # | DATE | DESCRIPTION |
|---|------|-------------|
| | | |

PROGRESS DOCUMENTS

These documents reflect progress and intent and may be subject to change, including additional detail. These are not final construction documents and should not be used for final bidding or construction-related purposes.

PROJECT INFORMATION

309 W. JOHNSON STREET
MADISON, WI

HOVDE PROPERTIES

PROJECT NUMBER: 11418
PROJECT MANAGER: CG

SHEET INFORMATION

DATE: 10/15/2012

SHEET NAME: WEST ELEVATION
A202

SHEET NUMBER:

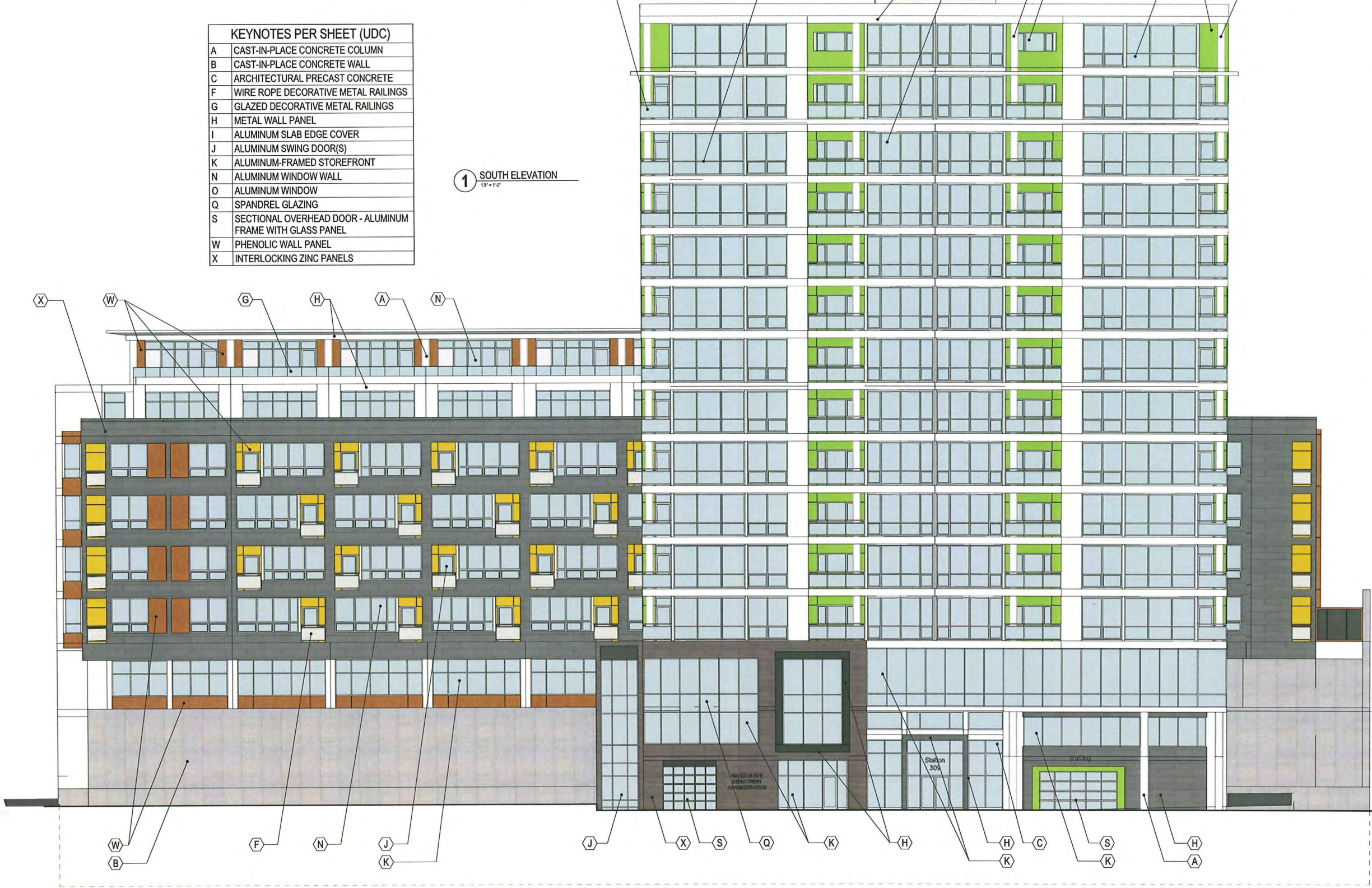
© Epstein Uhen Architects, Inc.

1 | 2 | 3 | 4 | 5 | 6 | 7 | 8

① ② ③ ④ ⑤ ⑥ ⑦ ⑧ ⑨ ⑩ ⑪ ⑫ ⑬ ⑭

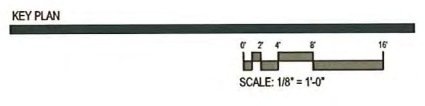
| KEYNOTES PER SHEET (UDC) | |
|--------------------------|---|
| A | CAST-IN-PLACE CONCRETE COLUMN |
| B | CAST-IN-PLACE CONCRETE WALL |
| C | ARCHITECTURAL PRECAST CONCRETE |
| F | WIRE ROPE DECORATIVE METAL RAILINGS |
| G | GLAZED DECORATIVE METAL RAILINGS |
| H | METAL WALL PANEL |
| I | ALUMINUM SLAB EDGE COVER |
| J | ALUMINUM SWING DOOR(S) |
| K | ALUMINUM-FRAMED STOREFRONT |
| N | ALUMINUM WINDOW WALL |
| O | ALUMINUM WINDOW |
| Q | SPANDREL GLAZING |
| S | SECTIONAL OVERHEAD DOOR - ALUMINUM FRAME WITH GLASS PANEL |
| W | PHENOLIC WALL PANEL |
| X | INTERLOCKING ZINC PANELS |

1 SOUTH ELEVATION
1/8" = 1'-0"



milwaukee 333 East Chicago Street
Milwaukee, Wisconsin 53202
tel 414 271 5350 fax 414 271 7794

madison 222 West Washington Ave, Suite 650
Madison, Wisconsin 53703
tel 608 442 5350 fax 608 442 6680



ISSUANCE AND REVISIONS

PLAN COMMISSION APPROVAL SET

| # | DATE | DESCRIPTION |
|---|------|-------------|
| | | |

PROGRESS DOCUMENTS

These documents reflect progress and intent and may be subject to change, including additional detail. These are not final construction documents and should not be used for final bidding or construction-related purposes.

PROJECT INFORMATION

309 W. JOHNSON STREET
MADISON, WI

HOVDE PROPERTIES

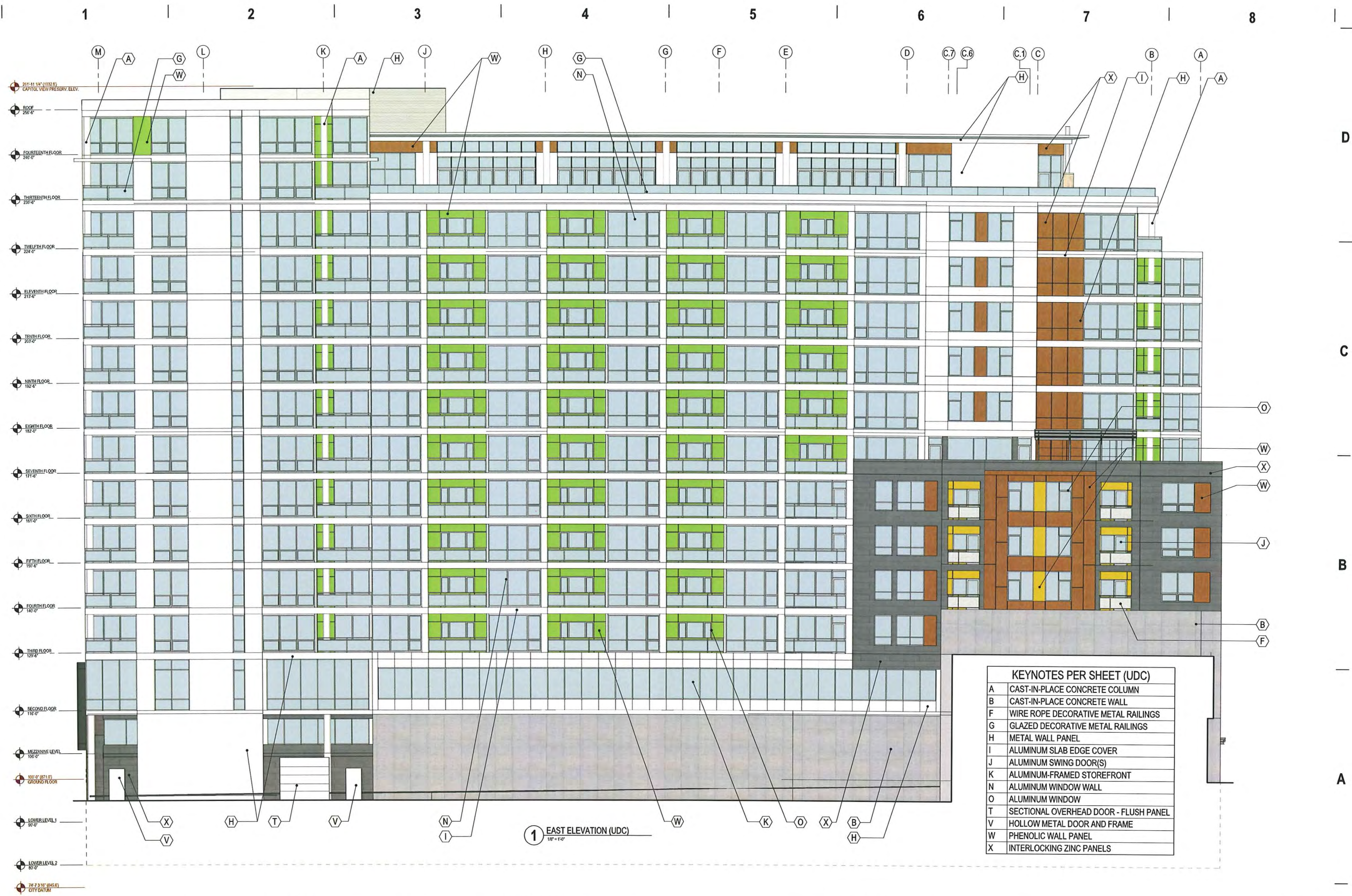
PROJECT NUMBER: 11418
PROJECT MANAGER: CG

SHEET INFORMATION

DATE: 10/15/2012

SHEET NAME: SOUTH ELEVATION
A203

SHEET NUMBER:



| KEYNOTES PER SHEET (UDC) | |
|--------------------------|---------------------------------------|
| A | CAST-IN-PLACE CONCRETE COLUMN |
| B | CAST-IN-PLACE CONCRETE WALL |
| F | WIRE ROPE DECORATIVE METAL RAILINGS |
| G | GLAZED DECORATIVE METAL RAILINGS |
| H | METAL WALL PANEL |
| I | ALUMINUM SLAB EDGE COVER |
| J | ALUMINUM SWING DOOR(S) |
| K | ALUMINUM-FRAMED STOREFRONT |
| N | ALUMINUM WINDOW WALL |
| O | ALUMINUM WINDOW |
| T | SECTIONAL OVERHEAD DOOR - FLUSH PANEL |
| V | HOLLOW METAL DOOR AND FRAME |
| W | PHENOLIC WALL PANEL |
| X | INTERLOCKING ZINC PANELS |

1 EAST ELEVATION (UDC)
1/8" = 1'-0"



milwaukee 333 East Chicago Street
Milwaukee, Wisconsin 53202
tel 414 271 5350 fax 414 271 7794

madison 222 West Washington Ave, Suite 650
Madison, Wisconsin 53703
tel 608 442 5350 fax 608 442 6680



ISSUANCE AND REVISIONS

PLAN COMMISSION APPROVAL SET

| # | DATE | DESCRIPTION |
|---|------|-------------|
| | | |

PROGRESS DOCUMENTS

These documents reflect progress and intent and may be subject to change, including additional detail. These are not final construction documents and should not be used for final bidding or construction-related purposes.

PROJECT INFORMATION

309 W. JOHNSON STREET
MADISON, WI



SHEET INFORMATION

DATE: 10/15/2012

SHEET NAME: **EAST ELEVATION A204**

SHEET NUMBER:

© Eppstein Uhen Architects, Inc.

1

2

3

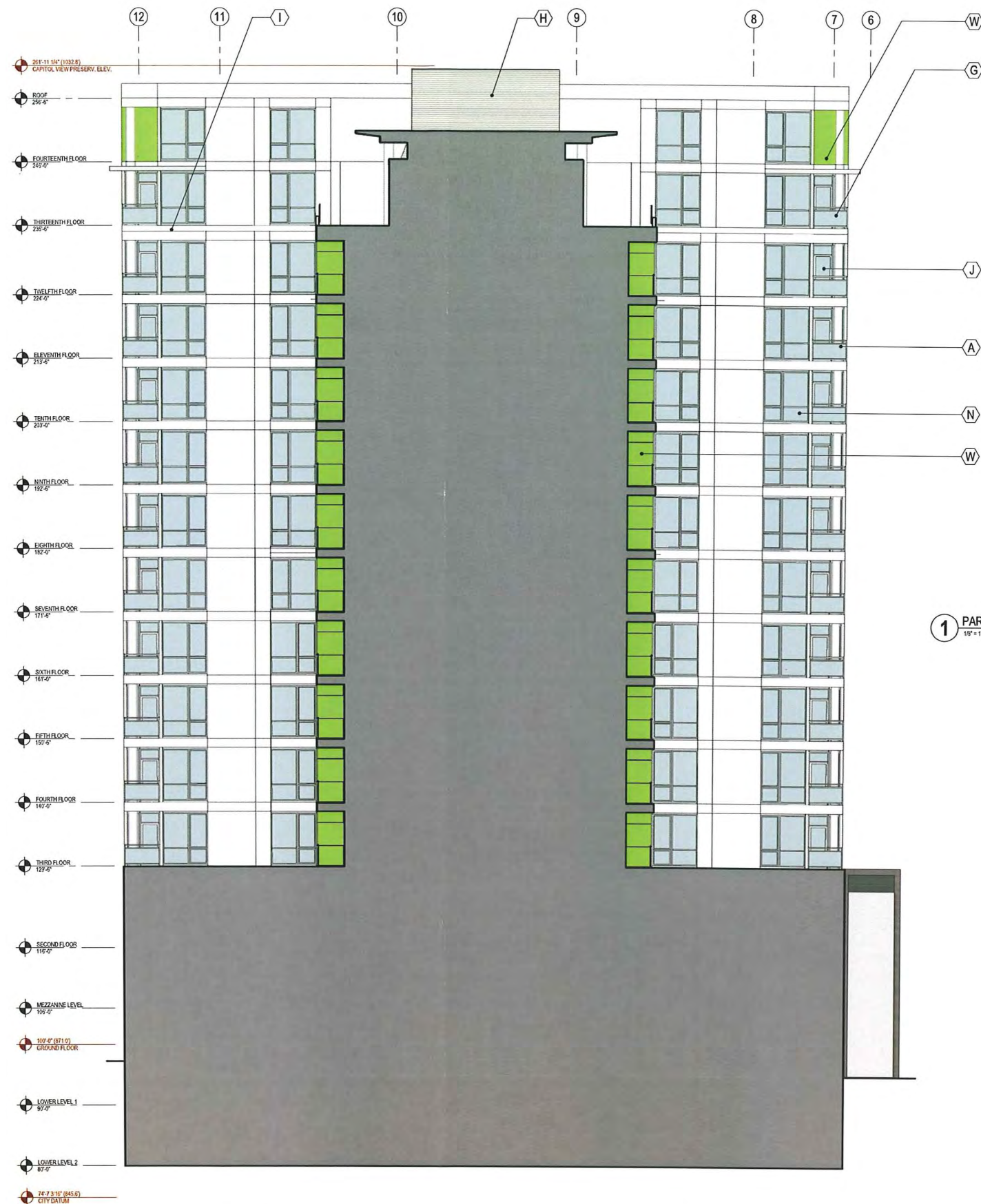
4

5

6

7

8



| KEYNOTES PER SHEET (UDC) | |
|--------------------------|----------------------------------|
| A | CAST-IN-PLACE CONCRETE COLUMN |
| G | GLAZED DECORATIVE METAL RAILINGS |
| H | METAL WALL PANEL |
| I | ALUMINUM SLAB EDGE COVER |
| J | ALUMINUM SWING DOOR(S) |
| N | ALUMINUM WINDOW WALL |
| W | PHENOLIC WALL PANEL |

D

C

B

A

1 PARTIAL NORTH ELEVATION
1/8" = 1'-0"

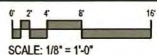


epstein uhen : architects

milwaukee 333 East Chicago Street
Milwaukee, Wisconsin 53202
tel 414 271 5350 fax 414 271 7794

madison 222 West Washington Ave, Suite 650
Madison, Wisconsin 53703
tel 608 442 5350 fax 608 442 6680

KEY PLAN



ISSUANCE AND REVISIONS

PLAN COMMISSION APPROVAL
SET

| # | DATE | DESCRIPTION |
|---|------|-------------|
| | | |

PROGRESS DOCUMENTS

These documents reflect progress and intent and may be subject to change, including additional detail. These are not final construction documents and should not be used for final bidding or construction-related purposes.

PROJECT INFORMATION

309 W. JOHNSON STREET
MADISON, WI



PROJECT NUMBER: 11418
PROJECT MANAGER: CG

SHEET INFORMATION

DATE: 10/15/2012

SHEET NAME:

SHEET NUMBER:

PARTIAL NORTH
ELEVATION
A205

© Epstein Uhen Architects, Inc.

1

2

3

4

5

6

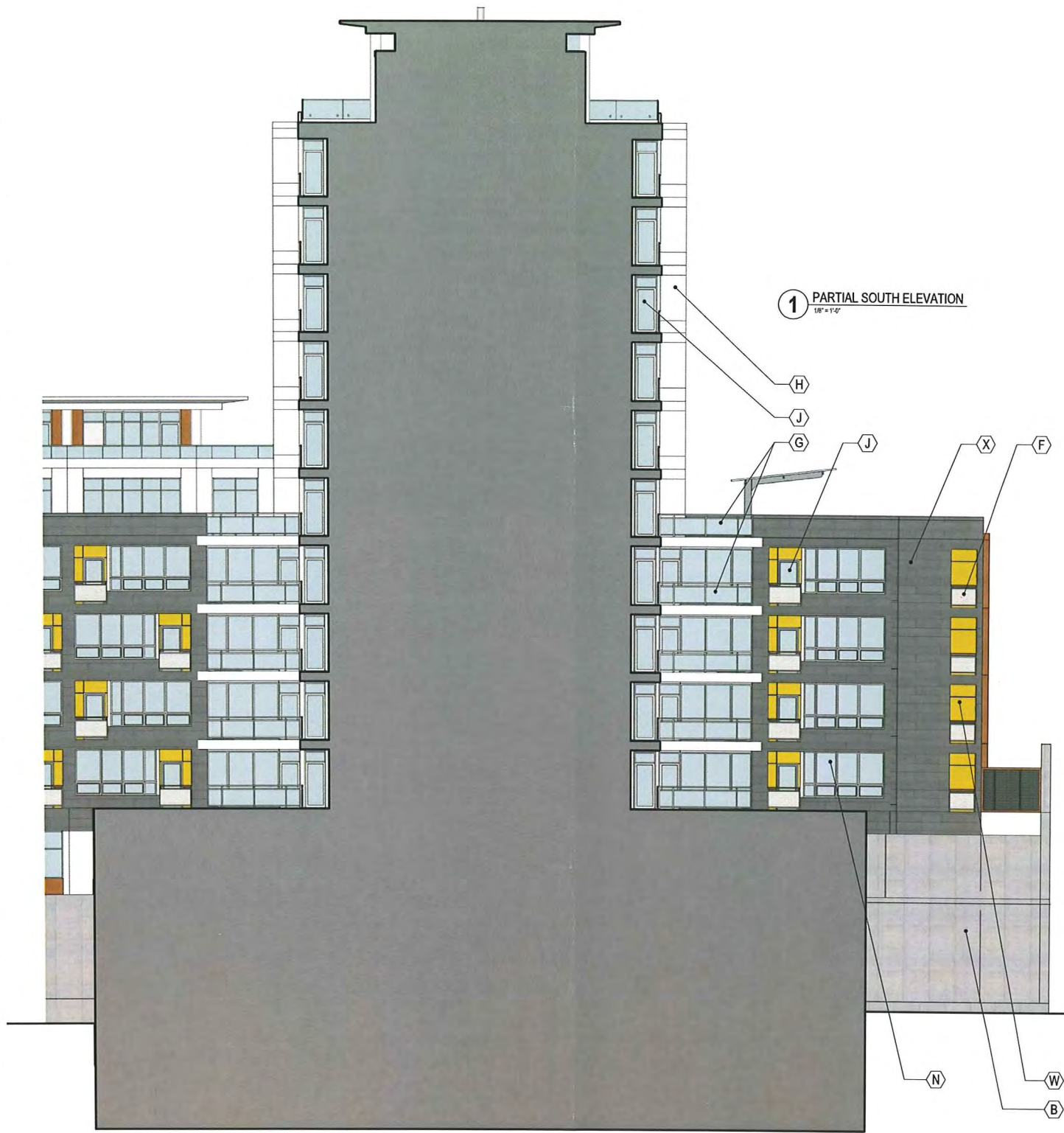
7

8

- CAPITOL VIEW PRESERV. ELEV. 261'-11 1/4" (132.29)
- ROOF 256'-6"
- FOURTEENTH FLOOR 246'-6"
- THIRTEENTH FLOOR 236'-6"
- TWELFTH FLOOR 224'-6"
- ELEVENTH FLOOR 213'-6"
- TENTH FLOOR 203'-6"
- NINTH FLOOR 192'-6"
- EIGHTH FLOOR 182'-6"
- SEVENTH FLOOR 177'-6"
- SIXTH FLOOR 164'-6"
- FIFTH FLOOR 150'-6"
- FOURTH FLOOR 142'-6"
- THIRD FLOOR 129'-6"
- SECOND FLOOR 116'-6"
- MEZZANINE LEVEL 106'-0"
- GROUND FLOOR 102'-0" (31.15)
- LOWER LEVEL 1 90'-0"
- LOWER LEVEL 2 87'-0"
- CITY DATUM 78'-3 1/2" (45.6)

- 6
- 7
- 8
- 9
- 10
- 11
- 12
- 12.3
- 13
- 14

| KEYNOTES PER SHEET (UDC) | |
|--------------------------|-------------------------------------|
| B | CAST-IN-PLACE CONCRETE WALL |
| F | WIRE ROPE DECORATIVE METAL RAILINGS |
| G | GLAZED DECORATIVE METAL RAILINGS |
| H | METAL WALL PANEL |
| J | ALUMINUM SWING DOOR(S) |
| N | ALUMINUM WINDOW WALL |
| W | PHENOLIC WALL PANEL |
| X | INTERLOCKING ZINC PANELS |



1 PARTIAL SOUTH ELEVATION
1/8" = 1'-0"

D

C

B

A

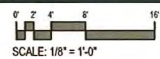


epstein uhen : architects

milwaukee 333 East Chicago Street
Milwaukee, Wisconsin 53202
tel 414 271 5350 fax 414 271 7794

madison 222 West Washington Ave, Suite 650
Madison, Wisconsin 53703
tel 608 442 5350 fax 608 442 6680

KEY PLAN



ISSUANCE AND REVISIONS

PLAN COMMISSION APPROVAL
SET

| # | DATE | DESCRIPTION |
|---|------|-------------|
| | | |

PROGRESS DOCUMENTS

These documents reflect progress and intent and may be subject to change, including additional detail. These are not final construction documents and should not be used for final bidding or construction-related purposes.

PROJECT INFORMATION

309 W. JOHNSON STREET
MADISON, WI



PROJECT NUMBER: 11418
PROJECT MANAGER: CG

SHEET INFORMATION

DATE: 10/15/2012

SHEET NAME:

PARTIAL SOUTH
ELEVATION
A206

SHEET NUMBER:

© Epstein Uhen Architects, Inc.