

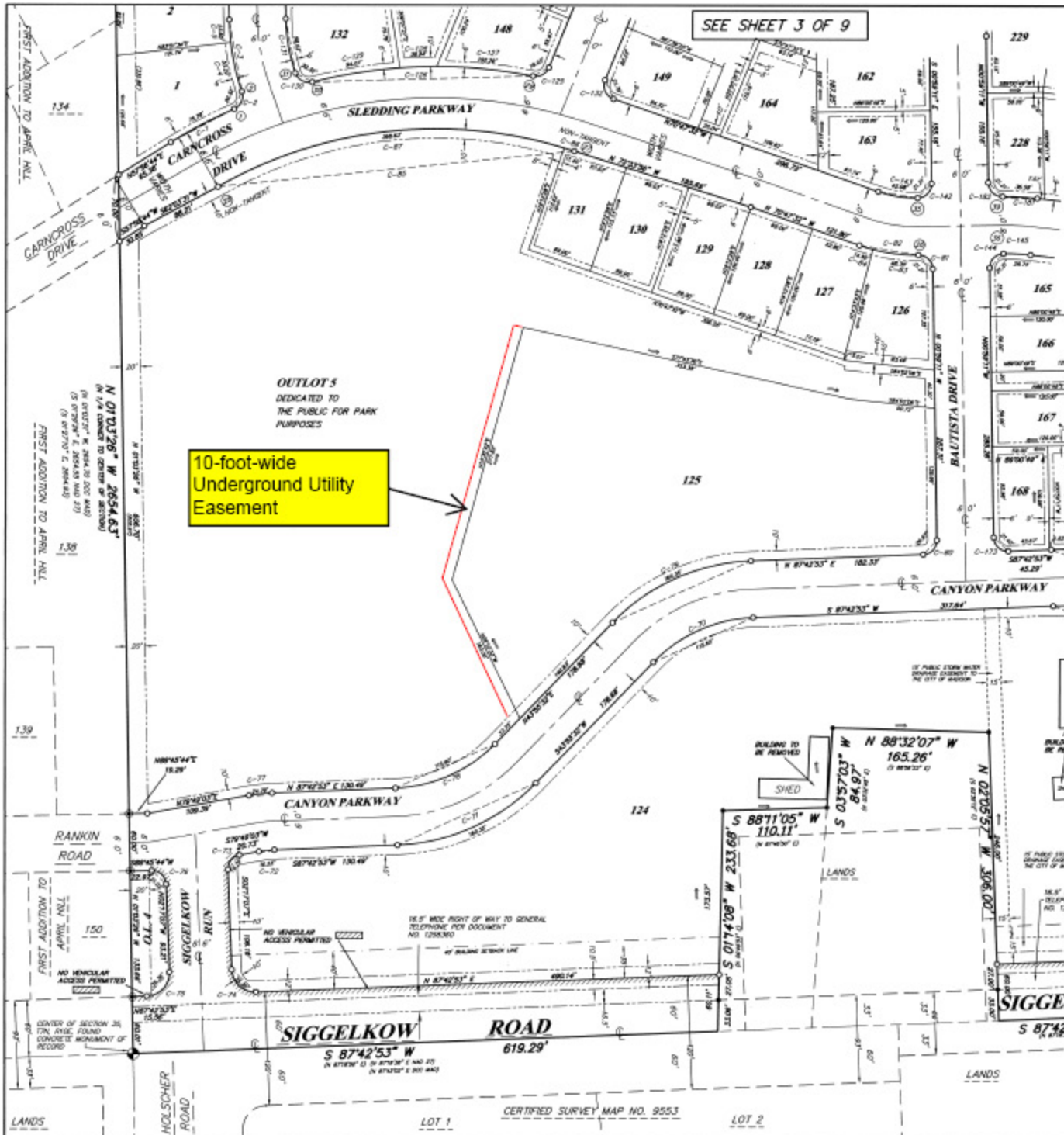
SECRET PLACES AT SIGGELKOW PRESERVE

LOCATED IN PART OF THE SW 1/4 OF THE SE 1/4 OF SECTION 26, AND PART OF THE NW 1/4, NE 1/4, SE 1/4 AND SW 1/4 OF THE NE 1/4 OF SECTION 35, T 7 N, R 10 E, IN THE CITY OF MADISON, DANE COUNTY, WISCONSIN.

SEE NOTES ON SHEET 8 OF 9

#3888414

JEREMY D. GUANINE
S-1022
DEERFIELD
WI
LAND SURVEYOR



10-foot-wide
Underground Utility
Easement

OUTLOTS
DEDICATED TO
THE PUBLIC FOR PARK
PURPOSES

There are no objections to this plat with respect to
Secs. 236.15, 236.16, 236.20 and 236.21 (1) and (2),
Wis. Stat., or by the County Planning Agency.

Certified March 23rd, 2004
Dane County Department of Administration
Rene M. Dowdy

LEGEND

- SECTION CORNER OR POINT
TYPE OF SURVEY AS NOTED
- ROAD 1/4" = 100'
- ROAD 1/2" = 100'
- SET 1/4" = 50' OVER 100'
- ROAD 1/2" = 100' OVER 100'
- ROAD 3/4" = 150' OVER 100'
- ROAD 1" = 200' OVER 100'
- ROAD 1 1/2" = 300' OVER 100'
- ROAD 2" = 400' OVER 100'
- ROAD 3" = 600' OVER 100'
- ROAD 4" = 800' OVER 100'
- ROAD 6" = 1200' OVER 100'
- ROAD 8" = 1600' OVER 100'
- ROAD 10" = 2000' OVER 100'
- ROAD 12" = 2400' OVER 100'
- ROAD 15" = 3000' OVER 100'
- ROAD 18" = 3600' OVER 100'
- ROAD 21" = 4200' OVER 100'
- ROAD 24" = 4800' OVER 100'
- ROAD 27" = 5400' OVER 100'
- ROAD 30" = 6000' OVER 100'
- ROAD 36" = 7200' OVER 100'
- ROAD 42" = 8400' OVER 100'
- ROAD 48" = 9600' OVER 100'
- ROAD 54" = 10800' OVER 100'
- ROAD 60" = 12000' OVER 100'
- ROAD 66" = 13200' OVER 100'
- ROAD 72" = 14400' OVER 100'
- ROAD 78" = 15600' OVER 100'
- ROAD 84" = 16800' OVER 100'
- ROAD 90" = 18000' OVER 100'
- ROAD 96" = 19200' OVER 100'
- ROAD 102" = 20400' OVER 100'
- ROAD 108" = 21600' OVER 100'
- ROAD 114" = 22800' OVER 100'
- ROAD 120" = 24000' OVER 100'
- ROAD 126" = 25200' OVER 100'
- ROAD 132" = 26400' OVER 100'
- ROAD 138" = 27600' OVER 100'
- ROAD 144" = 28800' OVER 100'
- ROAD 150" = 30000' OVER 100'
- ROAD 156" = 31200' OVER 100'
- ROAD 162" = 32400' OVER 100'
- ROAD 168" = 33600' OVER 100'
- ROAD 174" = 34800' OVER 100'
- ROAD 180" = 36000' OVER 100'
- ROAD 186" = 37200' OVER 100'
- ROAD 192" = 38400' OVER 100'
- ROAD 198" = 39600' OVER 100'
- ROAD 204" = 40800' OVER 100'
- ROAD 210" = 42000' OVER 100'
- ROAD 216" = 43200' OVER 100'
- ROAD 222" = 44400' OVER 100'
- ROAD 228" = 45600' OVER 100'
- ROAD 234" = 46800' OVER 100'
- ROAD 240" = 48000' OVER 100'
- ROAD 246" = 49200' OVER 100'
- ROAD 252" = 50400' OVER 100'
- ROAD 258" = 51600' OVER 100'
- ROAD 264" = 52800' OVER 100'
- ROAD 270" = 54000' OVER 100'
- ROAD 276" = 55200' OVER 100'
- ROAD 282" = 56400' OVER 100'
- ROAD 288" = 57600' OVER 100'
- ROAD 294" = 58800' OVER 100'
- ROAD 300" = 60000' OVER 100'
- ROAD 306" = 61200' OVER 100'
- ROAD 312" = 62400' OVER 100'
- ROAD 318" = 63600' OVER 100'
- ROAD 324" = 64800' OVER 100'
- ROAD 330" = 66000' OVER 100'
- ROAD 336" = 67200' OVER 100'
- ROAD 342" = 68400' OVER 100'
- ROAD 348" = 69600' OVER 100'
- ROAD 354" = 70800' OVER 100'
- ROAD 360" = 72000' OVER 100'
- ROAD 366" = 73200' OVER 100'
- ROAD 372" = 74400' OVER 100'
- ROAD 378" = 75600' OVER 100'
- ROAD 384" = 76800' OVER 100'
- ROAD 390" = 78000' OVER 100'
- ROAD 396" = 79200' OVER 100'
- ROAD 402" = 80400' OVER 100'
- ROAD 408" = 81600' OVER 100'
- ROAD 414" = 82800' OVER 100'
- ROAD 420" = 84000' OVER 100'
- ROAD 426" = 85200' OVER 100'
- ROAD 432" = 86400' OVER 100'
- ROAD 438" = 87600' OVER 100'
- ROAD 444" = 88800' OVER 100'
- ROAD 450" = 90000' OVER 100'
- ROAD 456" = 91200' OVER 100'
- ROAD 462" = 92400' OVER 100'
- ROAD 468" = 93600' OVER 100'
- ROAD 474" = 94800' OVER 100'
- ROAD 480" = 96000' OVER 100'
- ROAD 486" = 97200' OVER 100'
- ROAD 492" = 98400' OVER 100'
- ROAD 498" = 99600' OVER 100'
- ROAD 504" = 100800' OVER 100'
- ROAD 510" = 102000' OVER 100'
- ROAD 516" = 103200' OVER 100'
- ROAD 522" = 104400' OVER 100'
- ROAD 528" = 105600' OVER 100'
- ROAD 534" = 106800' OVER 100'
- ROAD 540" = 108000' OVER 100'
- ROAD 546" = 109200' OVER 100'
- ROAD 552" = 110400' OVER 100'
- ROAD 558" = 111600' OVER 100'
- ROAD 564" = 112800' OVER 100'
- ROAD 570" = 114000' OVER 100'
- ROAD 576" = 115200' OVER 100'
- ROAD 582" = 116400' OVER 100'
- ROAD 588" = 117600' OVER 100'
- ROAD 594" = 118800' OVER 100'
- ROAD 600" = 120000' OVER 100'
- ROAD 606" = 121200' OVER 100'
- ROAD 612" = 122400' OVER 100'
- ROAD 618" = 123600' OVER 100'
- ROAD 624" = 124800' OVER 100'
- ROAD 630" = 126000' OVER 100'
- ROAD 636" = 127200' OVER 100'
- ROAD 642" = 128400' OVER 100'
- ROAD 648" = 129600' OVER 100'
- ROAD 654" = 130800' OVER 100'
- ROAD 660" = 132000' OVER 100'
- ROAD 666" = 133200' OVER 100'
- ROAD 672" = 134400' OVER 100'
- ROAD 678" = 135600' OVER 100'
- ROAD 684" = 136800' OVER 100'
- ROAD 690" = 138000' OVER 100'
- ROAD 696" = 139200' OVER 100'
- ROAD 702" = 140400' OVER 100'
- ROAD 708" = 141600' OVER 100'
- ROAD 714" = 142800' OVER 100'
- ROAD 720" = 144000' OVER 100'
- ROAD 726" = 145200' OVER 100'
- ROAD 732" = 146400' OVER 100'
- ROAD 738" = 147600' OVER 100'
- ROAD 744" = 148800' OVER 100'
- ROAD 750" = 150000' OVER 100'
- ROAD 756" = 151200' OVER 100'
- ROAD 762" = 152400' OVER 100'
- ROAD 768" = 153600' OVER 100'
- ROAD 774" = 154800' OVER 100'
- ROAD 780" = 156000' OVER 100'
- ROAD 786" = 157200' OVER 100'
- ROAD 792" = 158400' OVER 100'
- ROAD 798" = 159600' OVER 100'
- ROAD 804" = 160800' OVER 100'
- ROAD 810" = 162000' OVER 100'
- ROAD 816" = 163200' OVER 100'
- ROAD 822" = 164400' OVER 100'
- ROAD 828" = 165600' OVER 100'
- ROAD 834" = 166800' OVER 100'
- ROAD 840" = 168000' OVER 100'
- ROAD 846" = 169200' OVER 100'
- ROAD 852" = 170400' OVER 100'
- ROAD 858" = 171600' OVER 100'
- ROAD 864" = 172800' OVER 100'
- ROAD 870" = 174000' OVER 100'
- ROAD 876" = 175200' OVER 100'
- ROAD 882" = 176400' OVER 100'
- ROAD 888" = 177600' OVER 100'
- ROAD 894" = 178800' OVER 100'
- ROAD 900" = 180000' OVER 100'
- ROAD 906" = 181200' OVER 100'
- ROAD 912" = 182400' OVER 100'
- ROAD 918" = 183600' OVER 100'
- ROAD 924" = 184800' OVER 100'
- ROAD 930" = 186000' OVER 100'
- ROAD 936" = 187200' OVER 100'
- ROAD 942" = 188400' OVER 100'
- ROAD 948" = 189600' OVER 100'
- ROAD 954" = 190800' OVER 100'
- ROAD 960" = 192000' OVER 100'
- ROAD 966" = 193200' OVER 100'
- ROAD 972" = 194400' OVER 100'
- ROAD 978" = 195600' OVER 100'
- ROAD 984" = 196800' OVER 100'
- ROAD 990" = 198000' OVER 100'
- ROAD 996" = 199200' OVER 100'
- ROAD 1002" = 200400' OVER 100'
- ROAD 1008" = 201600' OVER 100'
- ROAD 1014" = 202800' OVER 100'
- ROAD 1020" = 204000' OVER 100'
- ROAD 1026" = 205200' OVER 100'
- ROAD 1032" = 206400' OVER 100'
- ROAD 1038" = 207600' OVER 100'
- ROAD 1044" = 208800' OVER 100'
- ROAD 1050" = 210000' OVER 100'
- ROAD 1056" = 211200' OVER 100'
- ROAD 1062" = 212400' OVER 100'
- ROAD 1068" = 213600' OVER 100'
- ROAD 1074" = 214800' OVER 100'
- ROAD 1080" = 216000' OVER 100'
- ROAD 1086" = 217200' OVER 100'
- ROAD 1092" = 218400' OVER 100'
- ROAD 1098" = 219600' OVER 100'
- ROAD 1104" = 220800' OVER 100'
- ROAD 1110" = 222000' OVER 100'
- ROAD 1116" = 223200' OVER 100'
- ROAD 1122" = 224400' OVER 100'
- ROAD 1128" = 225600' OVER 100'
- ROAD 1134" = 226800' OVER 100'
- ROAD 1140" = 228000' OVER 100'
- ROAD 1146" = 229200' OVER 100'
- ROAD 1152" = 230400' OVER 100'
- ROAD 1158" = 231600' OVER 100'
- ROAD 1164" = 232800' OVER 100'
- ROAD 1170" = 234000' OVER 100'
- ROAD 1176" = 235200' OVER 100'
- ROAD 1182" = 236400' OVER 100'
- ROAD 1188" = 237600' OVER 100'
- ROAD 1194" = 238800' OVER 100'
- ROAD 1200" = 240000' OVER 100'
- ROAD 1206" = 241200' OVER 100'
- ROAD 1212" = 242400' OVER 100'
- ROAD 1218" = 243600' OVER 100'
- ROAD 1224" = 244800' OVER 100'
- ROAD 1230" = 246000' OVER 100'
- ROAD 1236" = 247200' OVER 100'
- ROAD 1242" = 248400' OVER 100'
- ROAD 1248" = 249600' OVER 100'
- ROAD 1254" = 250800' OVER 100'
- ROAD 1260" = 252000' OVER 100'
- ROAD 1266" = 253200' OVER 100'
- ROAD 1272" = 254400' OVER 100'
- ROAD 1278" = 255600' OVER 100'
- ROAD 1284" = 256800' OVER 100'
- ROAD 1290" = 258000' OVER 100'
- ROAD 1296" = 259200' OVER 100'
- ROAD 1302" = 260400' OVER 100'
- ROAD 1308" = 261600' OVER 100'
- ROAD 1314" = 262800' OVER 100'
- ROAD 1320" = 264000' OVER 100'
- ROAD 1326" = 265200' OVER 100'
- ROAD 1332" = 266400' OVER 100'
- ROAD 1338" = 267600' OVER 100'
- ROAD 1344" = 268800' OVER 100'
- ROAD 1350" = 270000' OVER 100'
- ROAD 1356" = 271200' OVER 100'
- ROAD 1362" = 272400' OVER 100'
- ROAD 1368" = 273600' OVER 100'
- ROAD 1374" = 274800' OVER 100'
- ROAD 1380" = 276000' OVER 100'
- ROAD 1386" = 277200' OVER 100'
- ROAD 1392" = 278400' OVER 100'
- ROAD 1398" = 279600' OVER 100'
- ROAD 1404" = 280800' OVER 100'
- ROAD 1410" = 282000' OVER 100'
- ROAD 1416" = 283200' OVER 100'
- ROAD 1422" = 284400' OVER 100'
- ROAD 1428" = 285600' OVER 100'
- ROAD 1434" = 286800' OVER 100'
- ROAD 1440" = 288000' OVER 100'
- ROAD 1446" = 289200' OVER 100'
- ROAD 1452" = 290400' OVER 100'
- ROAD 1458" = 291600' OVER 100'
- ROAD 1464" = 292800' OVER 100'
- ROAD 1470" = 294000' OVER 100'
- ROAD 1476" = 295200' OVER 100'
- ROAD 1482" = 296400' OVER 100'
- ROAD 1488" = 297600' OVER 100'
- ROAD 1494" = 298800' OVER 100'
- ROAD 1500" = 300000' OVER 100'

