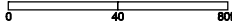


Topographic Survey of Meadowood Park

Outlot B, 5th Addition to Meadowood, City of Madison, Dane County WI



SURVEYED FOR:
 City of Madison, WI Parks Division
 PO Box 2987 Madison, WI 53701-0287 Tel: (608)288-4711

SURVEYED BY:
 Dan Foshier, PLS 2788 City of Madison Parks Division

NOTES:
 Date(s) of field work: March 28, 2010
 Site address(es) / tax parcel number(s):
 5800 Thrush Ln / 0801-062-0410-8

Locations of public utilities are based on Digger's Hotline Ticks(s) Numbered 20101204002; coverage obtained from the City of Madison Engineering Division; and visible above-ground structures. Additional buried utilities or structures may be encountered. No warranties are made to locate utilities, and this map does not attempt to show condition or capacity of any utility or service facility. Contact Digger's Hotline at (608) 243-4811 before excavating.

All surfaces and subsurface improvements on and adjacent to the site are not necessarily shown.

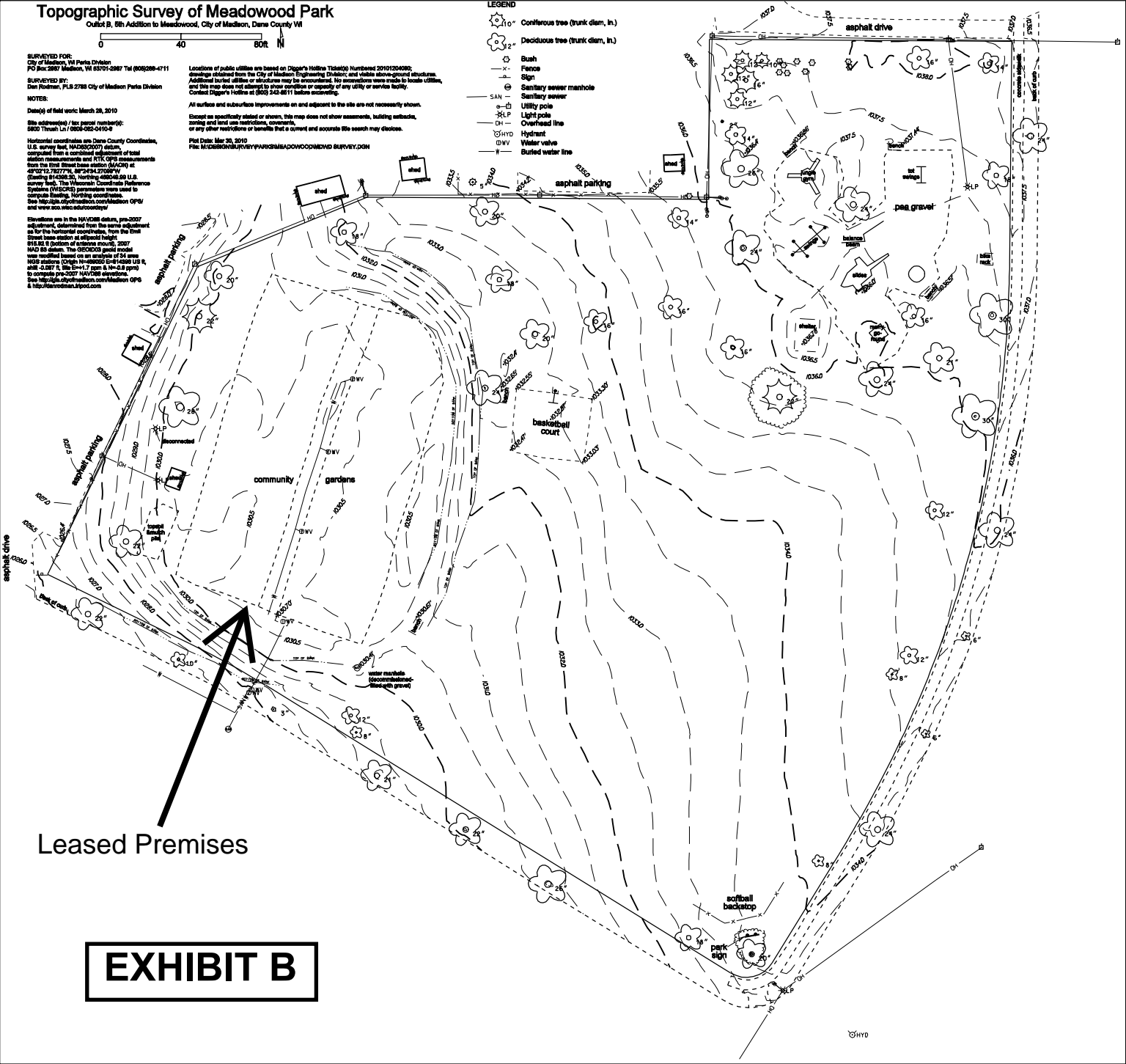
Boundaries specifically noted or shown. This map does not show assessments, building setbacks, zoning and land use restrictions, covenants, or any other restrictions or benefits that a owner and accurate site search may disclose.

Plot Date: Mar 30, 2010
 File: M20100330-5URVEY-PARKMEADOWOODM2010 SURVEY.DGN

- LEGEND**
- Confirferous tree (trunk diam, in.)
 - Deciduous tree (trunk diam, in.)
 - Bush
 - Fence
 - Sign
 - Sanitary sewer manhole
 - Sanitary sewer utility pole
 - Light pole
 - Overhead line
 - Hydrant
 - Water valve
 - Buried water line

Horizontal coordinates are Dane County Coordinate, U.S. survey feet, NAD 83 (2011) datum, computed from a combined adjustment of total station measurements and RTK GPS measurements from the 5th Street base station (44729) at 49°22'52.7277" N, 89°28'32.0700" W (Easting 814238.20, Northing 486246.89 U.S. survey feet). The Wisconsin Coordinate Reference System (WISCRS) parameters were used to compute Easting, Northing coordinates. See <http://gis.mt.com/wisconsin/coordinate/CRS/> and <http://www.wisconsin.gov/dot/>

Elevations are in the NAVD83 datum, gsm 2007 adjustment, determined from the same adjustment as for the horizontal coordinates, from the 5th Street base station at ellipsoid height 818.83 (Elevation of ellipsoid mean sea level). MAD 83 datum. The GEODIGS geoid model was used to determine an elevation of 4 feet MGS stations (Ortho Projection S=87 4208 US ft, ell. -0.187 ft, MGS=+1.7 ppm & 1e-0.8 ppm) to compute gsm-07 NAVD83 elevations. See <http://gis.mt.com/wisconsin/coordinate/CRS/> & <http://www.wisconsin.gov/dot/>



Leased Premises

EXHIBIT B

©HYD