

APPLICATION FOR  
URBAN DESIGN COMMISSION  
REVIEW AND APPROVAL

AGENDA ITEM # \_\_\_\_\_  
Project # \_\_\_\_\_

02893

DATE SUBMITTED: <u>MARCH 15, 2006</u>	<b>Action Requested</b>
UDC MEETING DATE: <u>MARCH 22, 2006</u>	<input type="checkbox"/> Informational Presentation
	<input checked="" type="checkbox"/> Initial Approval and/or Recommendation
	<input checked="" type="checkbox"/> Final Approval and/or Recommendation

PROJECT ADDRESS: 601 WEST WILSON STREET, MADISON  
ALDERMANIC DISTRICT: 4TH DISTRICT

OWNER/DEVELOPER (Partners and/or Principals) ARCHITECT/DESIGNER/OR AGENT:  
THE NATIONAL CONFERENCE OF BARR POTTER LAWSON, INC.  
EXAMINERS DOUG HURSH  
ERICA MOESER, PRESIDENT

CONTACT PERSON: DOUG HURSH  
Address: 15 ELLIS POTTER COURT  
MADISON, WI 53711  
Phone: 608.274.2741  
Fax: 608.274.3674  
E-mail address: dough@potterlawson.com



- TYPE OF PROJECT:  
(See Section A for:)
- Planned Unit Development (PUD)
    - General Development Plan (GDP)
    - Specific Implementation Plan (SIP)
  - Planned Community Development (PCD)
    - General Development Plan (GDP)
    - Specific Implementation Plan (SIP)
  - Planned Residential Development (PRD)
  - New Construction or Exterior Remodeling in an Urban Design District \* (A public hearing is required as well as a fee)
  - School, Public Building or Space (Fee may be required)
  - New Construction or Addition to or Remodeling of a Retail, Hotel or Motel Building Exceeding 50,000 Sq. Ft.
  - Planned Commercial Site

(See Section B for:)  
 New Construction or Exterior Remodeling in C4 District (Fee required)

(See Section C for:)  
 R.P.S.M. Parking Variance (Fee required)

(See Section D for:)  
 Comprehensive Design Review\* (Fee required)  
 Street Graphics Variance\* (Fee required)  
 Other \_\_\_\_\_

\*Public Hearing Required (Submission Deadline 3 Weeks in Advance of Meeting Date)

---

Application for Urban Design Commission - Initial / Final Approval  
Planned Unit Development, General Development Plan & Specific Implementation Plan



National Conference of Bar Examiners  
402 W. Wilson Street  
Madison, WI 53703-3614  
Phone: (608)280-8550  
March 15, 2006

Locator Map

Site Context Photos

Existing Conditions

Perspective Renderings

Site Plans

Site Survey

Site Preparation and Erosion Control

Site Layout Plan

Site Grading Plan

Site Planting Plan

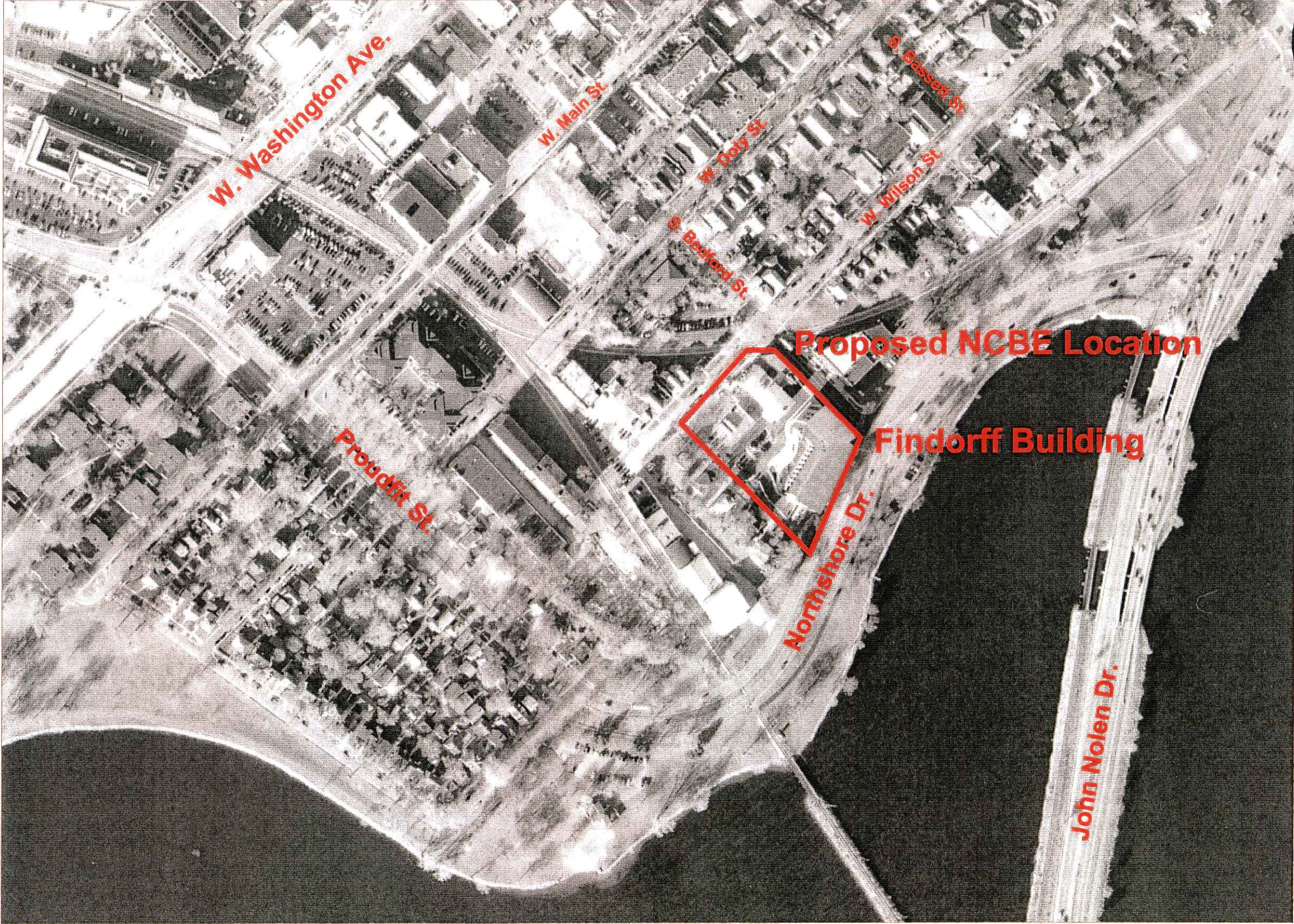
Site Lighting Plan

Site Lighting Plan at 4' AFG

Green Roof Lighting Plan

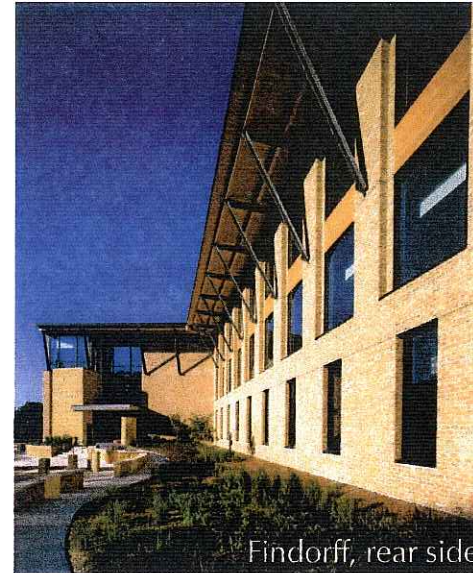
Site Lighting Information

Elevations

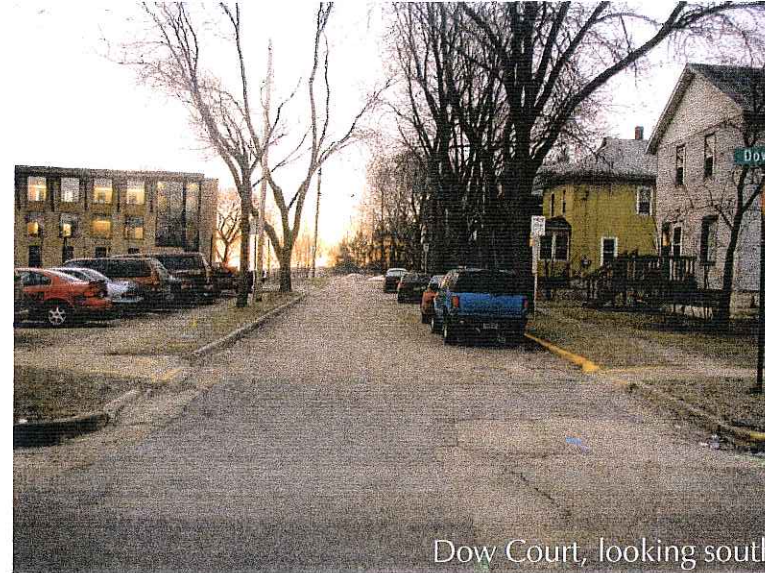




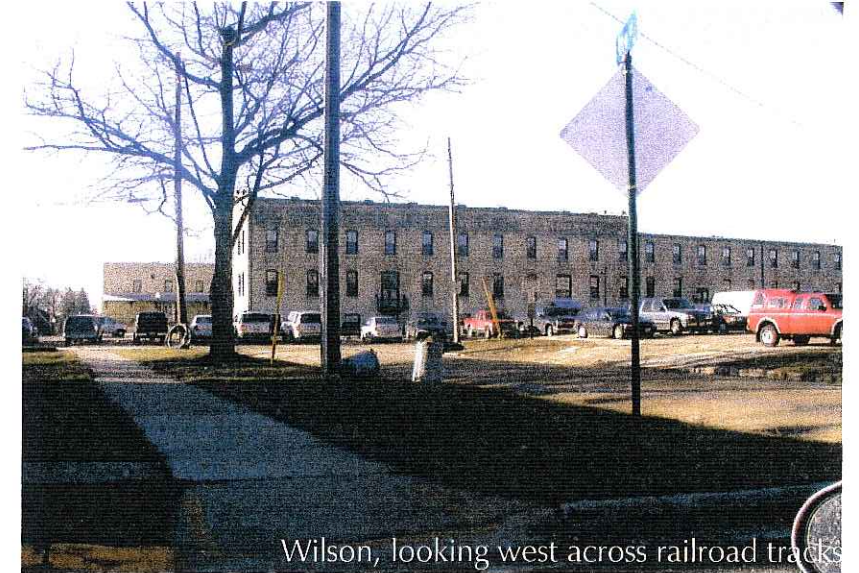
Findorff building, North Shore and Bedford



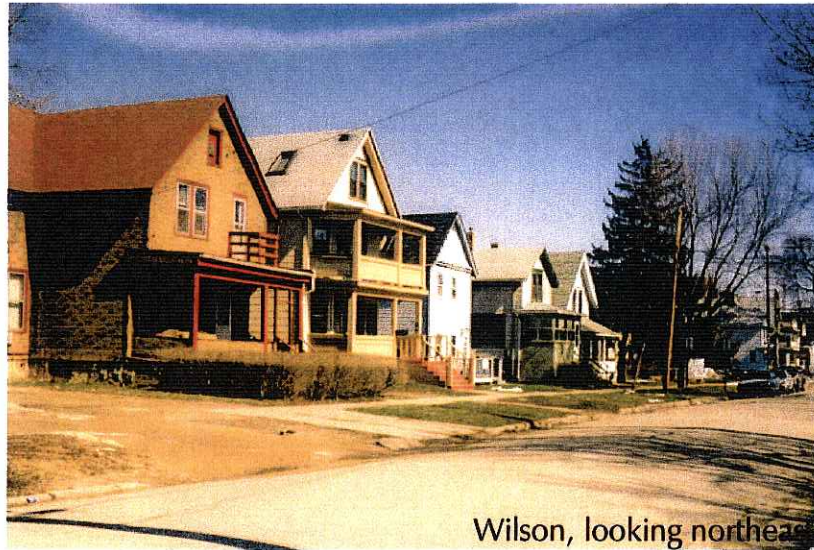
Findorff, rear side



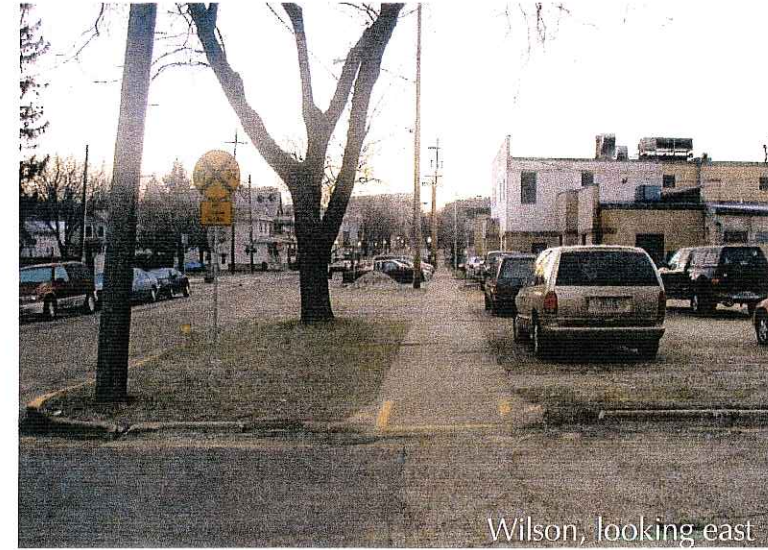
Dow Court, looking south



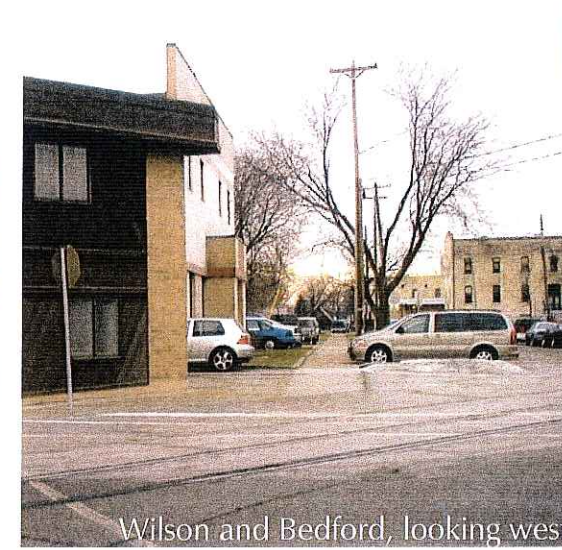
Wilson, looking west across railroad tracks



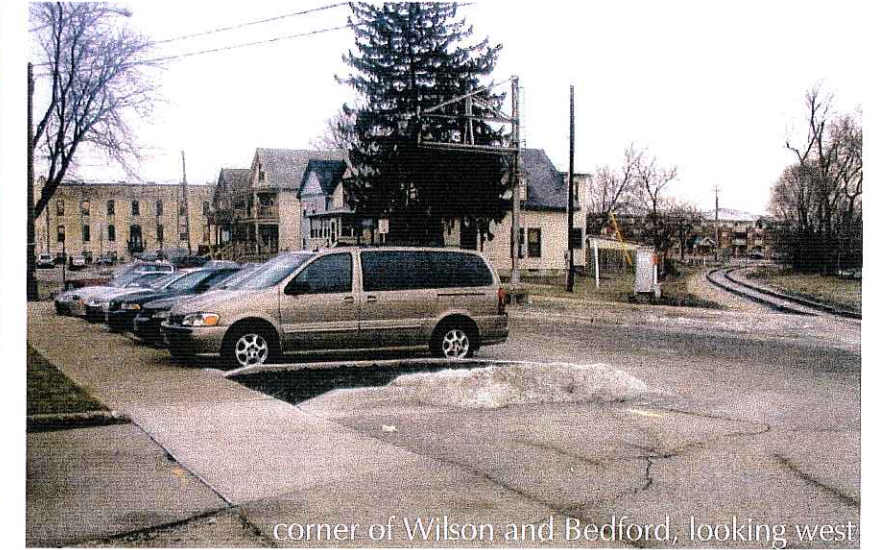
Wilson, looking northeast



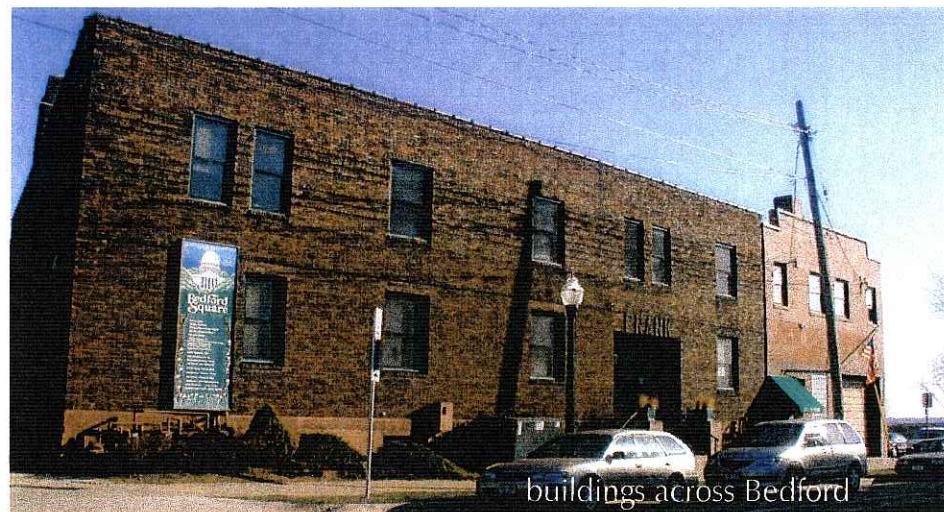
Wilson, looking east



Wilson and Bedford, looking west



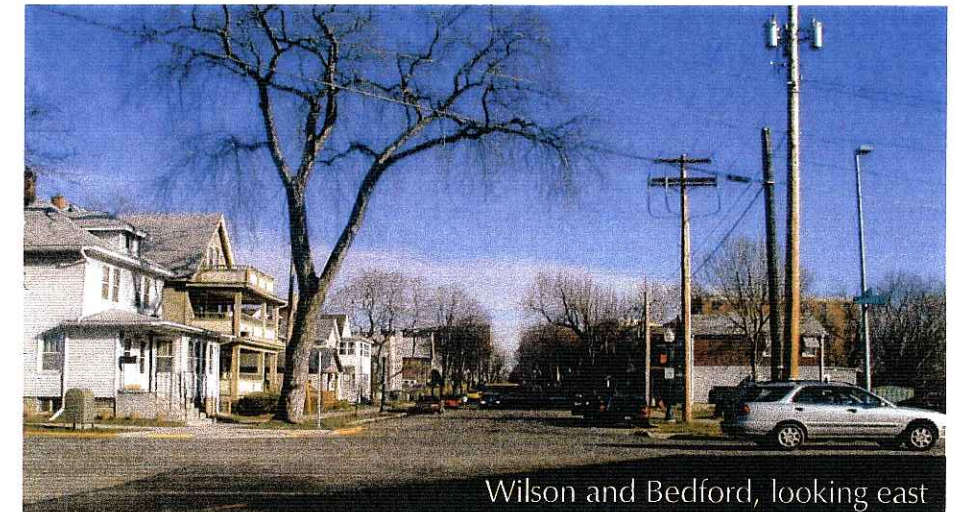
corner of Wilson and Bedford, looking west



buildings across Bedford



Bedford, looking south



Wilson and Bedford, looking east







Southeast Perspective



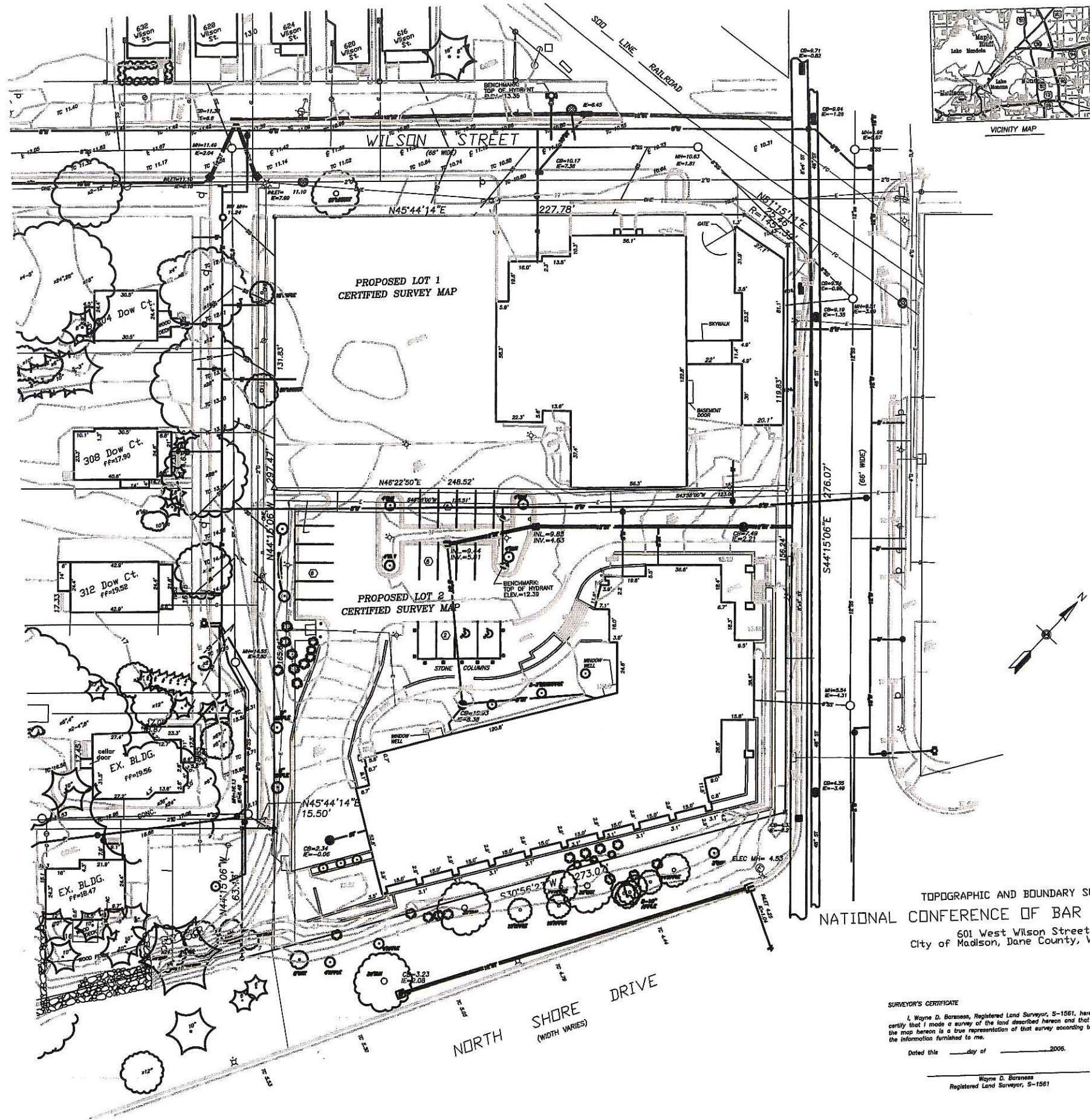
Northeast Perspective



Consultants:



Notes:



- LEGEND**
- 3/4" SOLID ROUND IRON STAKE
  - △ PK. NAIL
  - ⊠ CHISELED "X"
  - OVERHEAD ELECTRIC LINE
  - SANITARY SEWER
  - WATER MAIN
  - GAS MAIN
  - UNDERGROUND ELECTRIC
  - UNDERGROUND FIBER OPTIC
  - STORM SEWER
  - ELECTRIC TRANSFORMER/ VAULT
  - MANHOLE
  - CATCH BASIN/INLET
  - POWER POLE W/ GUY
  - LIGHT POLE
  - GAS METER
  - TELEPHONE PEDESTAL
  - VALVE
  - HYDRANT
  - GUARD POST
  - CISTERN
  - MONITORING WELL
  - SIGN
  - CONCRETE/STONE WALL
  - TAMBER WALL
  - CONC. CURB
  - BOULDER WALL
  - TREE W/ SIZE
  - EVERGREEN W/ SIZE
  - SHRUB
  - SPOT ELEVATION (0 DECIMAL FT.)
  - 8.7
  - TO 11.16
  - TOP OF CURB ELEVATION
  - EXISTING CONTOUR
  - NOTE: ELEVATIONS ARE IN CITY OF MADISON DATUM
  - RAILROAD TRACK
  - FENCE
  - ACCESSIBLE PARKING SPACE
  - NUMBER OF REGULAR PARKING SPACES
  - RAILROAD CROSSING SIGNAL

**SERVICING UTILITIES:**  
 Madison Gas & Electric Company  
 Gregory Meyer Area Engineer  
 133 South Doty Street  
 Madison, WI 53703  
 (608) 252-5859  
 City of Madison Water Utility  
 119 East City Avenue  
 Madison, WI 53715-1431  
 (608) 268-4851  
 City of Madison Sewer Construction and Maintenance  
 1522 Emil Street  
 Madison, WI 53713  
 (608) 256-4430  
 Charter Communications  
 2701 Jocelle Street  
 Madison, WI 53718  
 (608) 274-3822  
 590  
 152 Dixon Street  
 Madison, WI 53704  
 (608) 252-5423

**SURVEYED FOR:**  
 National Conference of Bar Examiners  
 402 West Wilson Street  
 Madison, WI 53703-3614

**TOPGRAPHIC AND BOUNDARY SURVEY**  
**NATIONAL CONFERENCE OF BAR EXAMINERS SITE**  
 601 West Wilson Street  
 City of Madison, Dane County, Wisconsin

**SURVEYOR'S CERTIFICATE**  
 I, Wayne D. Baraness, Registered Land Surveyor, S-1561, hereby certify that I made a survey of the land described herein and that the map hereon is a true representation of that survey according to the information furnished to me.  
 Dated this \_\_\_\_\_ day of \_\_\_\_\_, 2006.  
 \_\_\_\_\_  
 Wayne D. Baraness  
 Registered Land Surveyor, S-1561

DATE: 1-30-06  
 REV: 2-13-06  
 SCALE: 1" = 20'  
 FN: 06-02-101



Date	Issue/Revision	Symbol
03/15/05	UDC INITIAL/FINAL APPROVAL	

**THE NATIONAL CONFERENCE OF BAR EXAMINERS**

MADISON, WISCONSIN

**SITE SURVEY**

PL Project Number: 2003.20.02  
 Drawing No.: L000

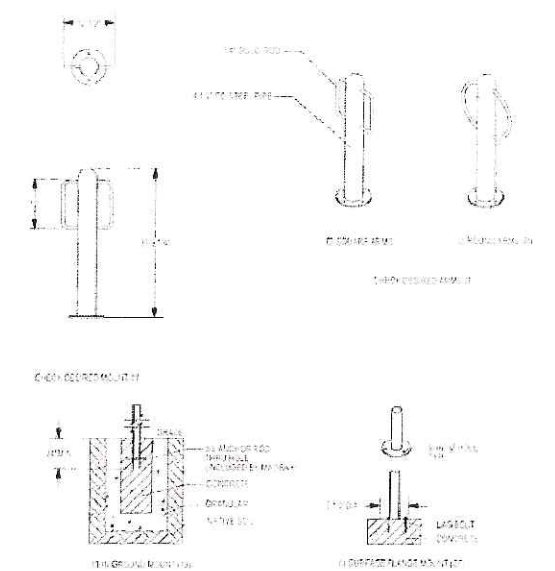


Consultants:

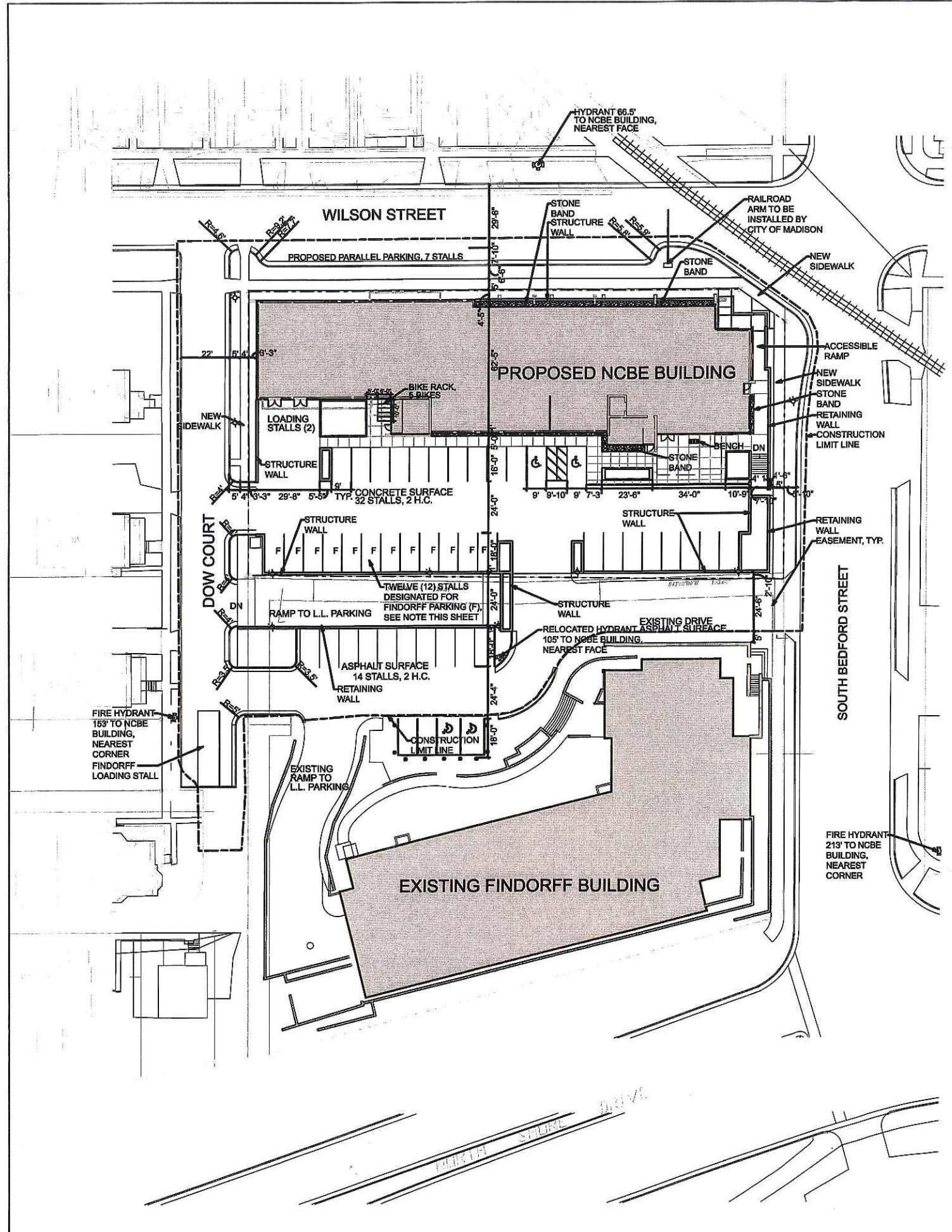


Notes:

1. Structure walls are located where below-grade parking structure extends upward above grade to form wall for surface parking. Structure walls along public sidewalks will be veneered with stone to match existing Findorff walls.
2. Retainin walls to be cast-in-place concrete with stone veneer to match existing Findorff building.
3. Exterior Bicycle Racks will be from Madrax, Middleton, WI. Round-arm with surface mount will be selected. See detail this sheet.
4. NCBE must provide 17 Bike Parking Stalls, 5 are provided at grade, 12 are provided in underground parking structure.
5. As per plan, 12 vehicle stalls on the NCBE surface parking lot will be designated for Findorff employee/visitor use. These stalls are designated with an "F" on this sheet.



CUT SHEET FOR EXTERIOR PARKING BY MADRAX, MIDDLETON, WI



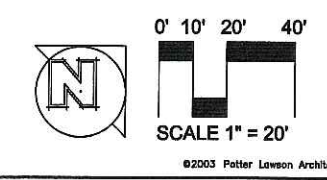
Date	Issuance/Revisions	Symbol
03/15/08	LDG INITIAL/FINAL APPROVAL	

THE NATIONAL  
CONFERENCE OF BAR  
EXAMINERS  
  
MADISON, WISCONSIN

Drawing Title:  
**LAYOUT PLAN**

Project Number:  
2003.20.02

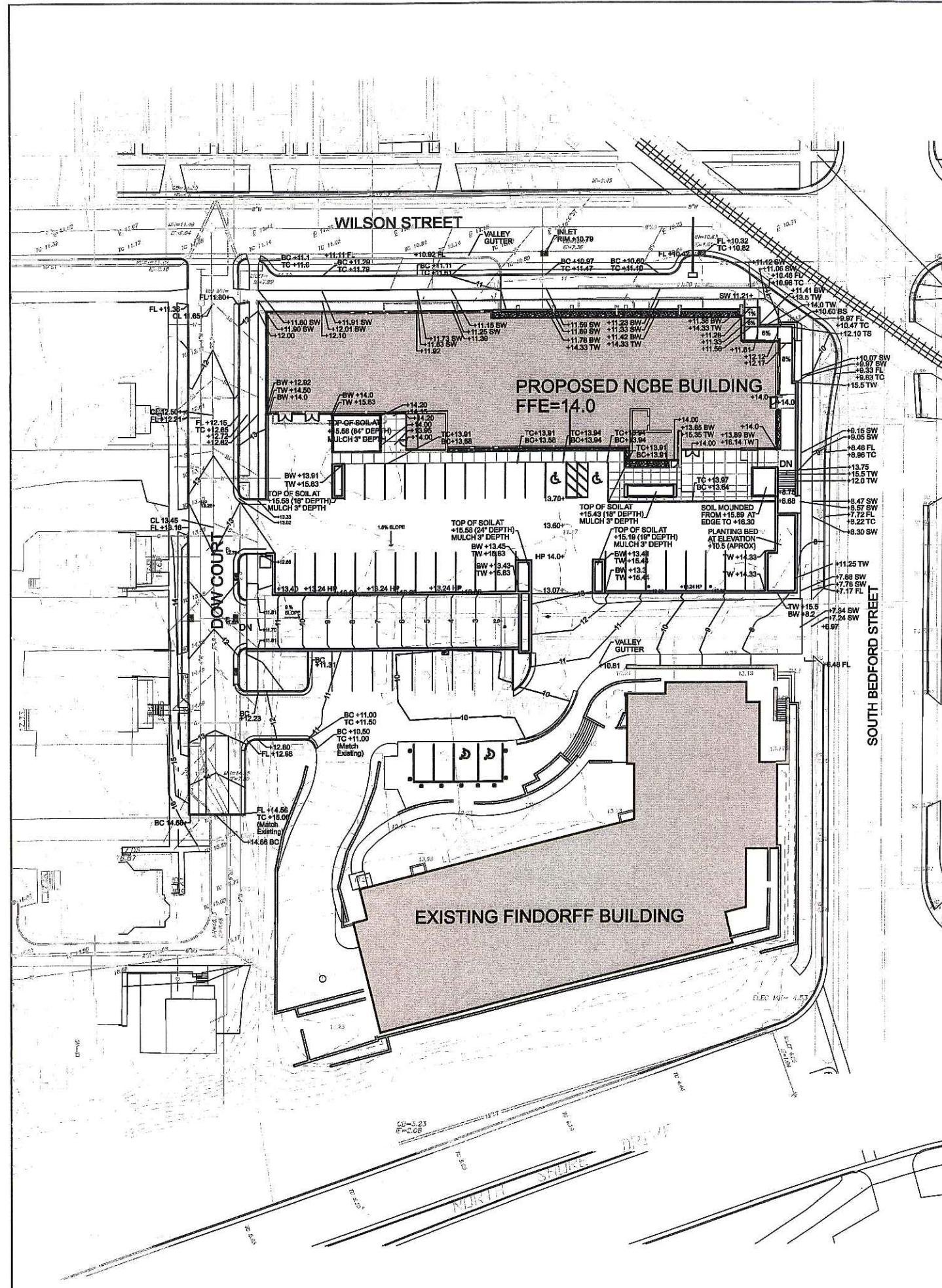
Drawing No.  
**L101**



Consultants:



Notes:  
 FL = FLOW LINE  
 TC = TOP OF CURB  
 BC = BOTTOM OF CURB  
 TW = TOP OF WALL  
 BW = BOTTOM OF WALL  
 SW = SIDEWALK ELEVATION  
 HP = HIGH POINT




03/15/06	UDC INITIAL/FINAL APPROVAL	
Date	Issuance/Revisions	Symbol

THE NATIONAL  
 CONFERENCE OF BAR  
 EXAMINERS

---

MADISON, WISCONSIN

Drawn By:	GRADING PLAN
PL Project Number: 2003.20.02	Drawing No. <b>L102</b>
Drawn By: RLP	

0' 10' 20' 40'

SCALE 1" = 20'

©2003 Potter Lawson Architects

Consultants:



Notes:

1. Areas designated as lawn shall be seeded with DOT #20 seed mix.
2. Edging shall be aluminum with black finish.
3. Decorative stone band of mulch chosen by landscape architect, similar to Mexican River Pebbles.
4. All perennial and shrub beds, unless otherwise noted, shall be mulched with shredded hardwood bark mulch.
5. Tree removals have been approved by Wayne Buckley, City of Madison Forester. Proposed terrace tree species have been preliminarily approved-final approval pending decision on overhead electric lines being buried along Wilson Street and Dow Court.

PLANT SCHEDULE

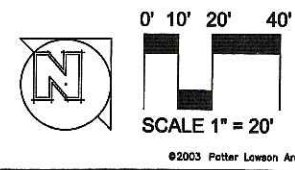
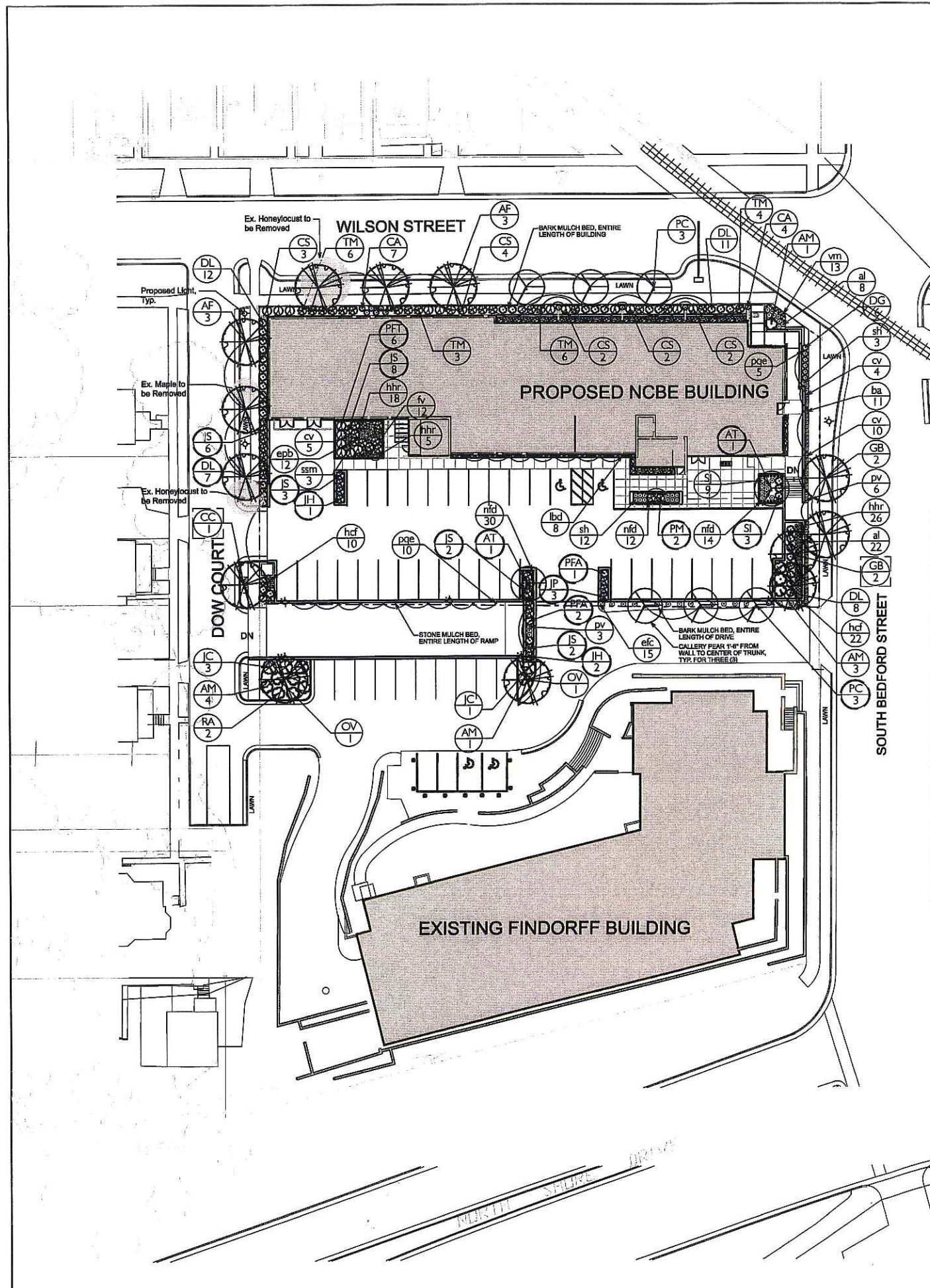
KEY	SCIENTIFIC NAME	COMMON NAME	SIZE AT PLANTING	ROOT COND.	QTY.	COMMENTS
<b>TALL</b>						
<b>GROWING DECIDUOUS TREES</b>						
AF	<i>Acer x freemanii</i> 'Armstrong'	Armstrong Freeman Maple	2 1/2" Cal.	BB	6	Space per plan; match specimens
CC	<i>Corylus colurna</i>	Turkish Filbert	2 1/2" Cal.	BB	1	Space per plan; strong central leader
GB	<i>Ginkgo biloba</i> 'Princeton Sentry'	Princeton Sentry Ginkgo	2 1/2" Cal.	BB	4	Space per plan; strong central leader
OV	<i>Ostrya virginiana</i>	Hophornbeam	2" Cal.	BB	2	Space per plan; strong central leader
<b>ORNAMENTAL TREES</b>						
PC	<i>Pyrus calleryana</i> 'Cleveland Select'	Flowering Pear	2" Cal.	BB	8	qty. (3) should be "3 sided" for entry drive
AT	<i>Acer tartaricum</i> ssp. <i>qirinale</i>	Tartarian Maple	1 1/2" Cal.	BB	2	Single-stem, prune for tree-form
<b>EVERGREEN SHRUBS</b>						
JC	<i>Juniperus chinensis</i> 'Sea Green'	Sea Green Juniper	18" Spr.	CG	4	Space 6'-6" O.C.
JH	<i>Juniperus horizontalis</i> 'Willowii'	Blue Rug Juniper	18" Spr.	CG	3	Space per plan
JS	<i>Juniperus sabinna</i> 'Arcadia'	Arcadia Juniper	18" Spr.	CG	21	Space 3'-6" O.C.
JP	<i>Juniperus x pfitzeriana</i> 'Glaucol'	Blue Pfitzer Juniper	18" Spr.	CG	3	Space 3'-6" O.C.
PM	<i>Pinus mugo</i> 'umilio'	Mugho Pine	18" Spr.	CG	2	Space 4'-0" O.C.
TM	<i>Taxus x media</i> 'Nora'	Nigra Intermediate Yew	18" Spr.	CG	19	Space 4'-6" O.C.
<b>DECIDUOUS SHRUBS</b>						
AM	<i>Aronia melanocarpa</i>	Black Chokeberry	3 Gal.	CONT.	9	Space 5' O.C. or per plan
CA	<i>Ceanothus americanus</i>	New Jersey Tea	1 Gal.	CONT.	11	Space per plan
CS	<i>Cornus sericea</i> 'Isanti'	Isanti Dwarf Red Dogwood	3 Gal.	CONT.	13	Space 6' O.C.
DG	<i>Deutzia gracilis</i> 'Nikko'	Slender Deutzia	1 Gal.	CONT.	6	Space 36" O.C.
DL	<i>Dieris lonicera</i>	Dwarf Bush Honeysuckle	1 Gal.	CONT.	38	Space 4'-0" O.C.
PFA	<i>Potentilla fruticosa</i> 'Abbotswood'	Abbotswood Potentilla	1 Gal.	CONT.	3	Space 3'-6" O.C.
PFT	<i>Potentilla fruticosa</i> 'Tangerine'	Tangerine Potentilla	1 Gal.	CONT.	6	Space 4'-0" O.C.
RA	<i>Rhus aromatica</i> 'Gro-low'	Gro-low Fragrant Sumac	1 Gal.	CONT.	2	Space per plan
SJ	<i>Spirea japonica</i> 'Magic Carpet'	Magic Carpet Spirea	1 Gal.	CONT.	9	Space 24" O.C.
SI	<i>Stephanandra incisa</i> 'Crispa'	Cutleaf Stephanandra	1 Gal.	CONT.	3	Space 3'-4" O.C.
<b>GRASSES</b>						
pv	<i>Panicum virgatum</i> 'Northwind'	Northwind Blue Switchgrass	1 Gal.	CONT.	9	Space 30" O.C.
sh	<i>Sporobolus heterolepis</i>	Prairie Dropseed	1 Gal.	CONT.	15	Space 24" O.C.
<b>PERENNIALS</b>						
ai	<i>Aster laevis</i>	Smooth Aster	4 1/2" Pot.	CONT.	30	Space 20" O.C.
ba	<i>Baptisia australis</i>	Blue False Indigo	4 1/2" Pot.	CONT.	11	Space 20" O.C.
cv	<i>Chrysopsis villosa</i>	Hairy Golden Aster	4 1/2" Pot.	CONT.	19	Space 18" O.C.
epb	<i>Echinacea purpurea</i> 'Bright Star'	Bright Star Purple Coneflower	4 1/2" Pot.	CONT.	12	Space 18" O.C.
fv	<i>Fragaria virginiana</i>	Woodland Strawberry	2 1/2" Pot.	CONT.	12	Space 15" O.C.
hcf	<i>Hemerocallis</i> 'Chicago Fire'	Chicago Fire Daylily	4 1/2" Pot.	CONT.	32	Space 18" O.C.
hhr	<i>Hemerocallis</i> 'Happy Returns'	Happy Returns Daylily	4 1/2" Pot.	CONT.	49	Space 15" O.C.
nfd	<i>Nepeta x faassenii</i> 'Dropmore'	Dropmore Dwarf Catmint	4 1/2" Pot.	CONT.	56	Space 18" O.C.
ssm	<i>Salvia x superba</i> 'Marcus'	Marcus Flowering Sage	4 1/2" Pot.	CONT.	3	Space 12" O.C.
<b>VINES AND GROUNDCOVERS</b>						
efc	<i>Eucynthus fortunei</i> var. <i>coloratus</i>	Purple Wintercreeper	1 Gal.	CONT.	15	Space 5'-0" O.C.
lbd	<i>Lonicera x brownii</i> 'Dropmore Scarlet'	Dropmore Scarlet Honeysuckle	1 Gal.	CONT.	8	Space per plan, train up DacorCable structure
pqe	<i>Parthenocissus quinquefolia</i> 'Engelmann'	Engelmann's Virginia Creeper	1 Gal.	CONT.	15	Space per plan, train up wall
vm	<i>Vinca minor</i>	Vinca	2 1/2" Pot.	CONT.	13	Space 12-18" o.c.; see plan

NOTES:

- REQUIRED TREES PER CITY OF MADISON LANDSCAPE POINT SYSTEM HAVE LABELS IN SQUARES ON THE PLAN.
- PLANTS USED TOWARD POINTS IN LANDSCAPE WORKSHEET HAVE CIRCLED LABELS ON THE PLAN.

NCBE LANDSCAPE POINTS			
3 CANOPY TREES REQUIRED FOR 21 PARKING SPACES			
32 PARKING SPACES REQUIRE 155.0 POINTS OF LANDSCAPE ELEMENTS			
LANDSCAPE ELEMENTS			
ELEMENT	QUANTITY	POINT VALUE	POINTS ACHIEVED
DECIDUOUS SHRUB	18	2	36
EVERGREEN SHRUB	27	3	81
ORNAMENTAL TREE	5	15	75
<b>TOTAL POINTS</b>			<b>192</b>

FINDORFF LANDSCAPE POINTS			
1 CANOPY TREE REQUIRED FOR 14 PARKING SPACES			
14 PARKING SPACES REQUIRE 69.0 POINTS OF LANDSCAPE ELEMENTS			
LANDSCAPE ELEMENTS			
ELEMENT	QUANTITY	POINT VALUE	POINTS ACHIEVED
CANOPY TREE 2 - 2 1/2" CAL.	1	35	35
DECIDUOUS SHRUB	8	2	16
EVERGREEN SHRUB	6	3	18
<b>TOTAL POINTS</b>			<b>69</b>



03/15/06 UDC INITIAL/FINAL APPROVAL  
Date Issuance/Revisions Symbol

THE NATIONAL CONFERENCE OF BAR EXAMINERS  
MADISON, WISCONSIN

Drawing Title  
**PLANTING PLAN**

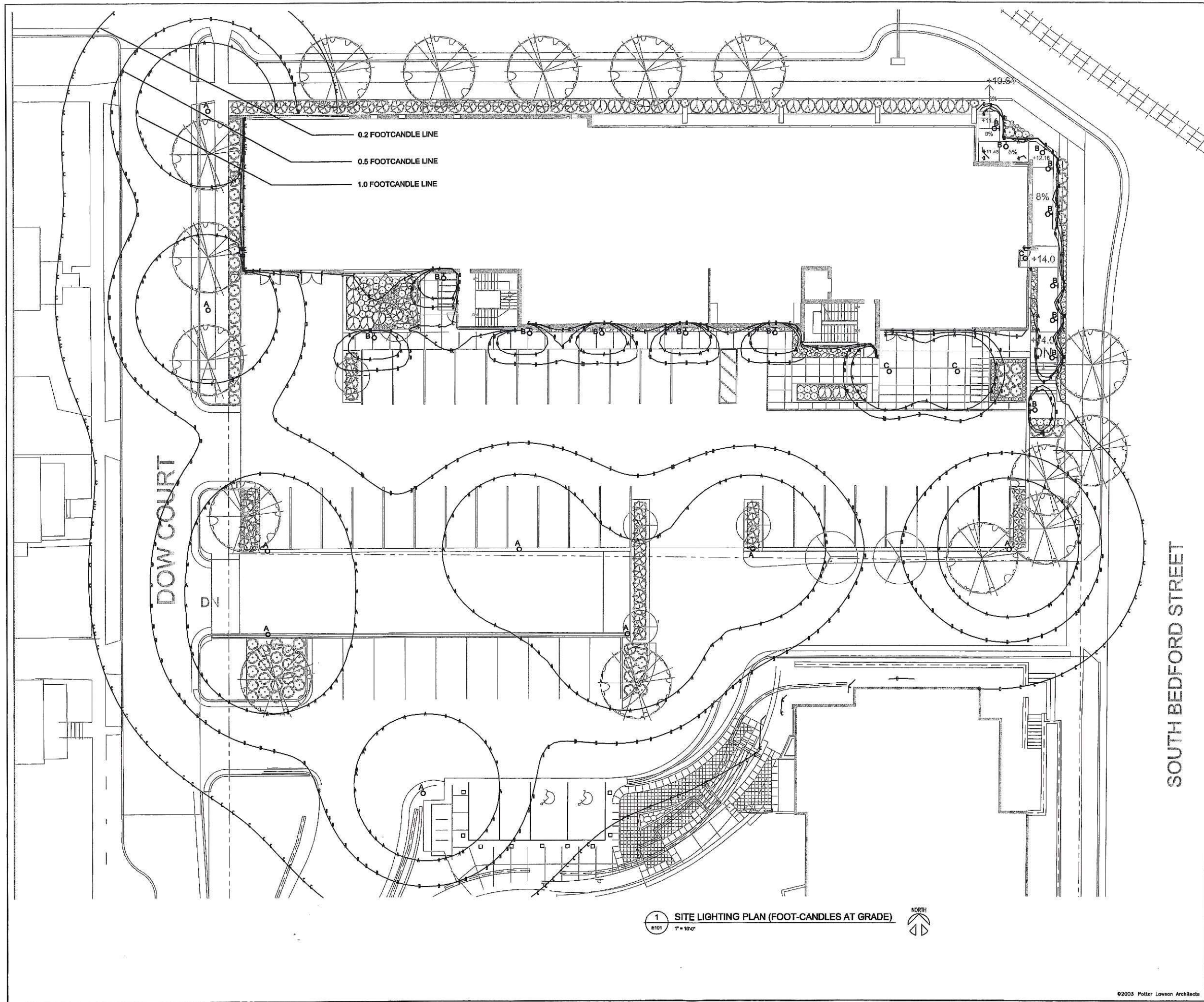
PI Project Number: 2003.20.02 Drawing No.  
Drawn By: FLF  
**L104**

©2003 Potter Lawson Architects

Consultants:

Notes:

1. LIGHT FIXTURE TYPE 'C' IS A RECESSED DOWN LIGHT INSTALLED IN A CANOPY.
2. THE AVERAGE MAINTAINED FOOTCANDLE LEVEL AS MEASURED AT GRADE FOR THE GENERAL PARKING AND PEDESTRIAN AREAS IS 1.5 FOOTCANDLES.



1 SITE LIGHTING PLAN (FOOT-CANDLES AT GRADE)  
E101 1" = 10'-0"



Date	Issuance/Revisions	Symbol
02/22/08	CITY REVIEW	

THE NATIONAL  
CONFERENCE OF BAR  
EXAMINERS  
  
MADISON, WISCONSIN

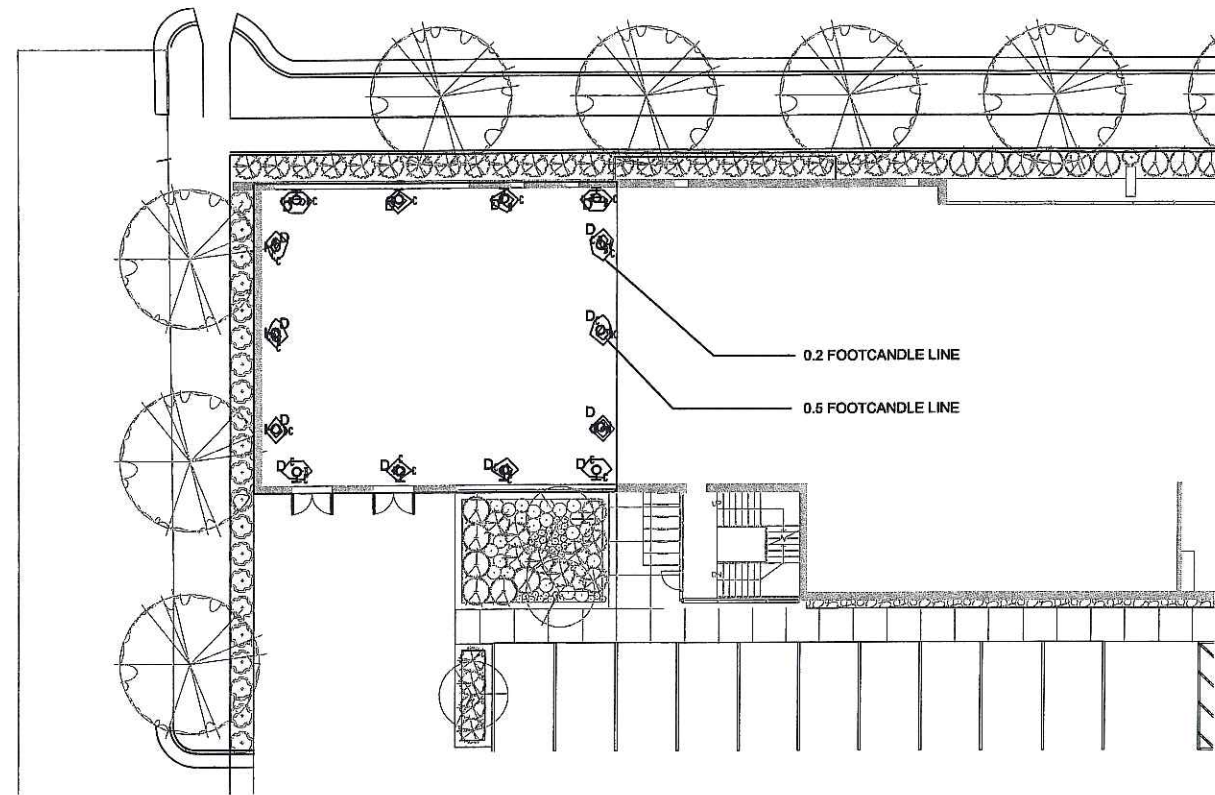
Drawing Title:  
SITE LIGHTING PLAN

PIJ Project Number:  
2003.20.02  
Drawing No.:  
E101

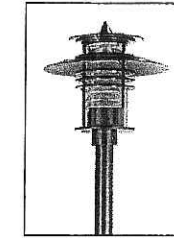


Consultants:

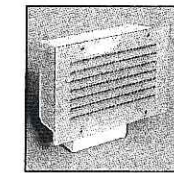
Notes:



4 GREEN ROOF LIGHTING PLAN (FOOT-CANDLES AT THE ROOF)  
E103 1" = 10'-0"



1 LIGHT FIXTURE TYPE "A"  
E103 NTS



2 LIGHT FIXTURE TYPE "B"  
E103 NTS



3 LIGHT FIXTURE TYPE "D"  
E103 NTS

LIGHT FIXTURE SCHEDULE						
LAMP						
TYPE	TYPE	QTY	WATTAGE	DESCRIPTION	MANUFACTURER	CATALOG NO.
A	MH	1	175	MHC175/U/M	PHOENIX	ET-PT-175MH-PT-N-CL-SH-200V
B	MH	1	50	MHC50/U/M	COLE	HMH-3150
C	MH	1	50	MHC50/U/M	OMEGA	OMG-50E17-BBSPL-FL-120
D	INC	1	13	13W T5	LUMIERE	1203

Date	Issuance/Revisions	Symbol
02/22/06	CITY REVIEW	

THE NATIONAL  
CONFERENCE OF BAR  
EXAMINERS

MADISON, WISCONSIN

Drawing Title:  
GREEN ROOF LIGHTING  
PLAN, FIXTURE PICTURES  
AND LIGHTING SCHEDULE

PLU Project Number:  
2003.20.02

Drawing No.

Drawn By:  
JVD

E103

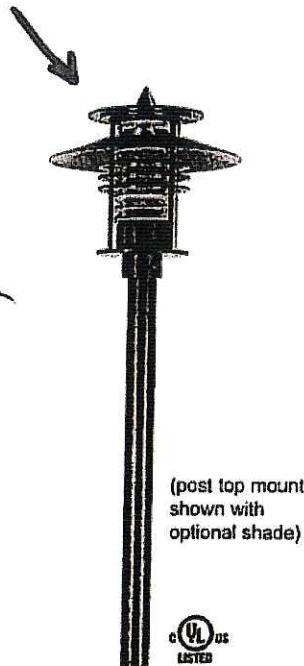


A

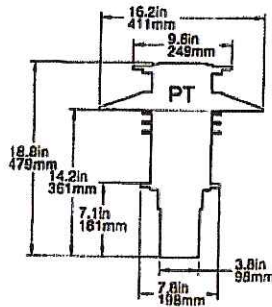
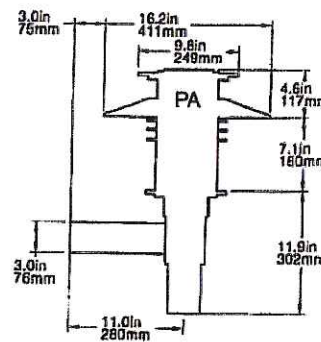
## EUROTECH - Pole Mount



(FIXTURE HEAD)



(post top mount shown with optional shade)



**General:** The high impact look of the EuroTech is perfect for area and security lighting with great designer flare.

**Construction:** Cast aluminum top, housing, shade and mounting gear. Stainless steel external hardware to protect against corrosion.

**Lens:** High-impact, UV stabilized DR clear acrylic lens is standard on units up to 70W; clear glass standard on 100-175W units. Opal polycarbonate lens option available.

**Lamps:** HID and fluorescent lamps included. Accepts up to 175W MH and 150W HPS lamps, 26-42W compact fluorescent lamps and 150W (max.) incandescent lamps.

**Ballast:** Ballasts are integrally mounted up to 70W. 100-175W units require pole or remote mounting of ballast. 50W HID units standard with dual volt (120/277V) 60HZ ballast; 70W-175W units standard with quad volt (120/208/240/277V) 60HZ ballast; compact fluorescent units standard with universal 120-277V 50/60HZ electronic ballast.

**Tops:** Six top styles available: beveled, cone, dome, flat, none (flush top) and finial point.

**Mounting:** Two pole mount styles available: straight arm and post top. See order information for quantities and configuration details.

**Poles:** Sold separately. See Phoenix "Pole Specification Guide".

**Shade:** Optional cast aluminum shade available (shown in photo).

**Finish:** Textured polyester powder coat finish. Optional shade underside is standard white. Black standard. Bronze, gray, white, silver, and verde green options available. For custom colors, please contact factory.

**Gaskets:** EPDM gaskets are standard.

**E.P.A. and Weight:** EPA: PA=0.62ft<sup>2</sup>, PT=0.40ft<sup>2</sup>; weight: PA=23lbs., PT=21lbs.

**Listings:** UL Listed 1570, 1571 and 1572 for Wet Locations. Indoor/Outdoor listed for use in Canada.

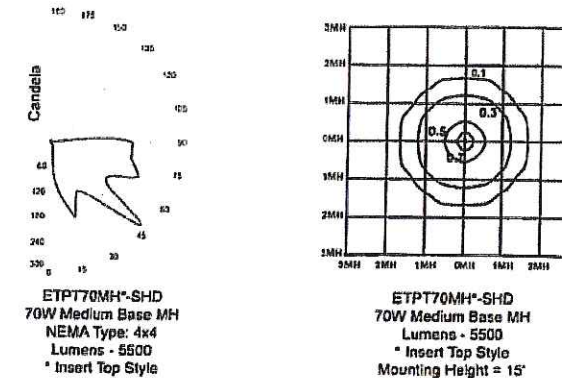


WALL MOUNT AND BOLLARD FIXTURE AVAILABLE

PHOENIX 6161 North 64th Street • Milwaukee, WI 53218-1543 USA • Phone: 414-431-2300 Fax: 414-438-0213  
www.phoenixproducts.com

A

## PHOTOMETRICS



For mounting heights (MH) other than 15' use:

$$\left(\frac{15}{\text{Actual Height}}\right)^2 \times \text{FC chart value}$$

For lamp watts other than shown in chart use:

$$\left(\frac{\text{Actual Lumens}}{5500}\right) \times \text{FC chart value}$$

FC = Footcandle

## ORDERING INFORMATION

OPTIONS

SERIES	MOUNT	WATT/TYPE	TOP STYLE	LENS (clear acrylic standard)	OPTIONS (none standard)	VOLTAGE (120V standard)	FINISH (black standard)
Example ET	PA	70MH	P	OP	SHD	347V	VGN
ET	PA PT	50MH 70MH 100MH 175MH 50HPS 70HPS 100HPS 150HPS INC 26CFL 32CFL 42CFL	B C D F N P	OP GL	SHD TRH	220/240-50H 347V	BRZ WHT VGN GRY SIL CC

### Lamp Wattage/Type

50MH = 50W Metal Halide (ED17)  
70MH = 70W Metal Halide (ED17)  
100MH = 100W Metal Halide (ED17)  
175MH = 175W Metal Halide (ED17)  
50HPS = 50W High Pressure Sodium (ED17)  
70HPS = 70W High Pressure Sodium (ED17)  
100HPS = 100W High Pressure Sodium (ED17)  
150HPS = 150W High Pressure Sodium (ED17)  
INC = Incandescent (150W max.)  
26CFL = 26W Compact Fluorescent  
32CFL = 32W Compact Fluorescent  
42CFL = 42W Compact Fluorescent

### Mounting

PA = Straight Arm Pole Mount  
PT = Post Top Mount - Single post top mount

### Top Style

B = Beveled Top  
C = Cone Top  
D = Dome Top  
F = Flat Top  
N = None (flush top)  
P = Finial Point Top

### Options

SHD = Shade  
TRH = Tamper Resistant Hardware

### Voltage

HID: 60W = 120/277V; 60 HZ standard  
70W+ = 120/208/240/277V standard  
CFL: 120/277V; 50/60 HZ standard  
220/240-50H = 220/240V, 50HZ (MH 70W only)  
347V = 347 Volt (70W HID or higher units only)

### LENS (Clear Acrylic Lens Standard to 70W; Clear glass standard on 100-175W units)

OP = Opal Polycarbonate Lens  
GL = Clear Glass Lens (26-70W units)

### Finish (Black Standard)

BRZ = Bronze  
WHT = White  
VGN = Verde Green  
GRY = Gray  
SIL = Silver  
CC = Custom Colors (contact factory)



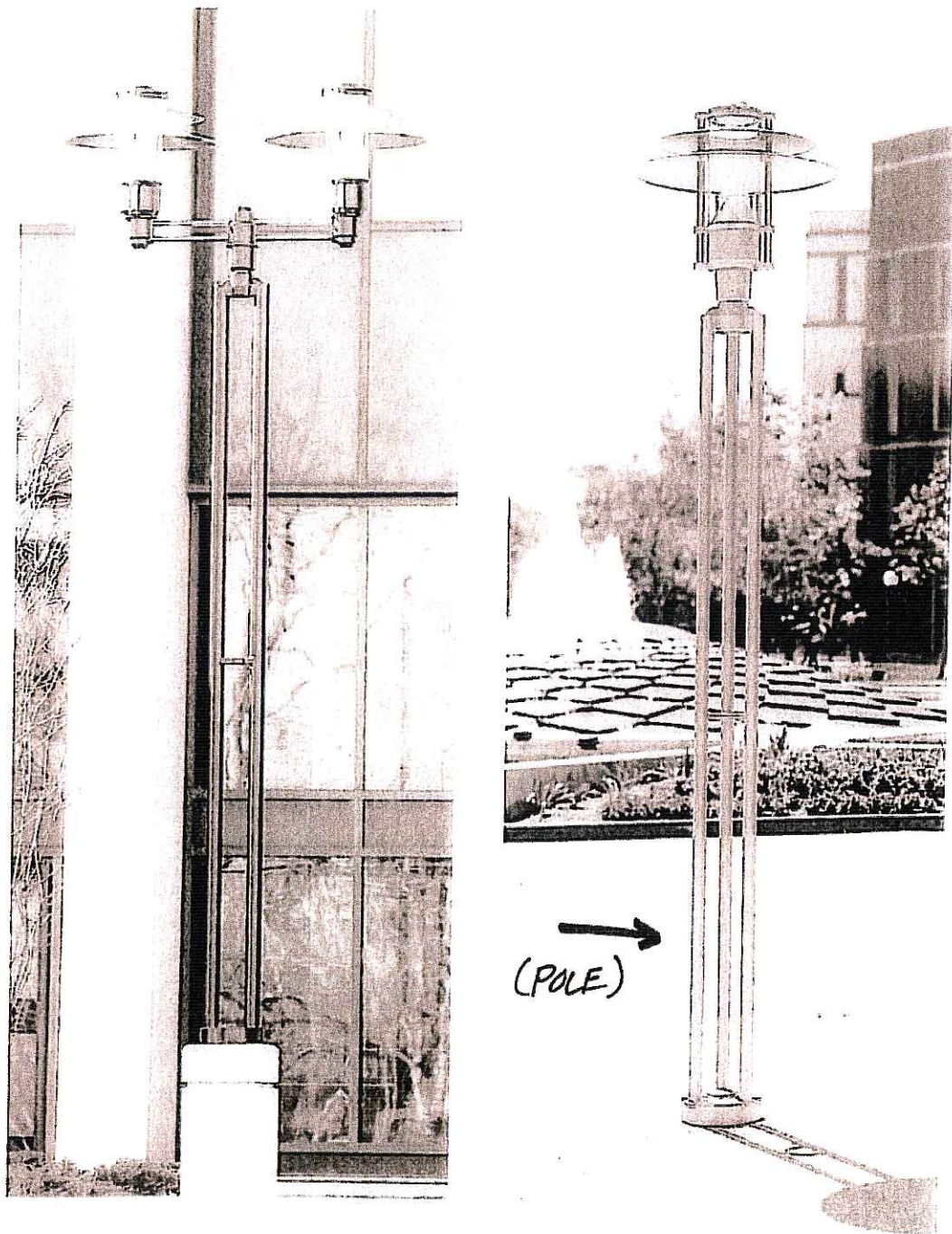
01-28-00 N5610350

PHOENIX 6161 North 64th Street • Milwaukee, WI 53218-1543 USA • Phone: 414-431-2300 Fax: 414-438-0213  
www.phoenixproducts.com

SPECTRA™

Multi-Post Poles

A



(POLE)

2-SP2 DBL GR5 STS TAP2 2P12

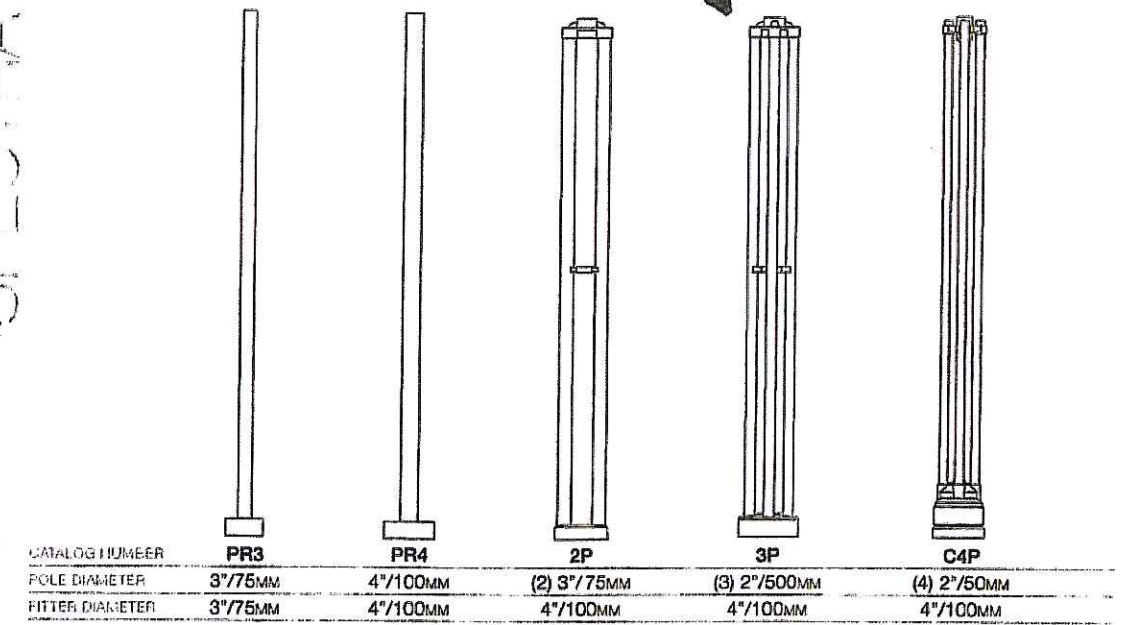
SP1 DBL GLA STS 3P10

Architectural Area

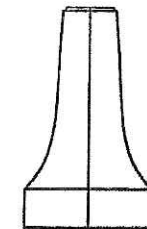
SPECTRA™

Poles

A

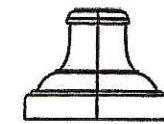


Accessories

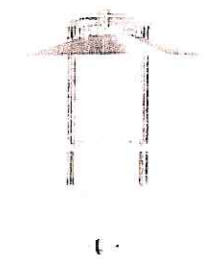


BC5-4 Two piece cast bast cover for PR4 poles.

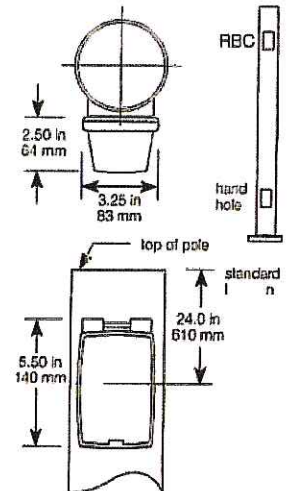
BC5-5 Two piece cast bast cover for PR5 poles.  
• 14"/355mm x 24"/610mm



BC6-4 Two piece cast bast cover for PR4 poles.  
• 13"/330mm x 17"/430mm



PCA-C Rotatable photocell housing. The photocell can be aimed away from stray light sources for an accurate setting. The photocell is also shielded from light emissions from the fixture. The housing slips over a 4"/100mm o.d. pole, a fixture or arm slips over the 4"/100mm o.d. tenon. Includes an internal twist lock receptacle, and an access cover with integral lens. Adds 8.0"/200mm to the overall height of the pole/fixture assembly. Photocell by others. For SP1 only.



RBC Cast aluminum receptacle housing, integrally welded to the pole. Includes a NEC approved clear cover. Does not include a receptacle or internal wiring. For PR3 and PR4 poles only.

COLE LIGHTING

Step-lites

B

Series	Incan.	Fluor.	HID	Exterior	Interior	Feed-Thru	Other Options
2153	•	•	•	•	•	•	Cast bronze front, Emergency battery, 277V electrical, Tamperproof screws
3100	•	•	•	•	•	•	

2153/3100 SERIES

Description

The 2153/3100 Series of Step-lites is a high performance site fixture for large areas. Its large aperture allows high light levels to the sides as well as in front of the fixture for many exterior locations. The rugged construction, engineering excellence, and quality make these fixtures ideal for specification in most public areas.

Features

Louvers in the 2153/3100 Series are more widely spaced than most fixtures of this type, allowing for significantly greater forward projected illumination. Exceptional durability is provided by the thick cast aluminum faceplate and the tempered glass diffuser. Louvered models offer even greater protection to the diffuser while controlling the distribution of light. Cole Step-lites feature a cast aluminum junction box which may be easily field mounted to either the back or bottom of the housing to best suit installation conditions.

Applications

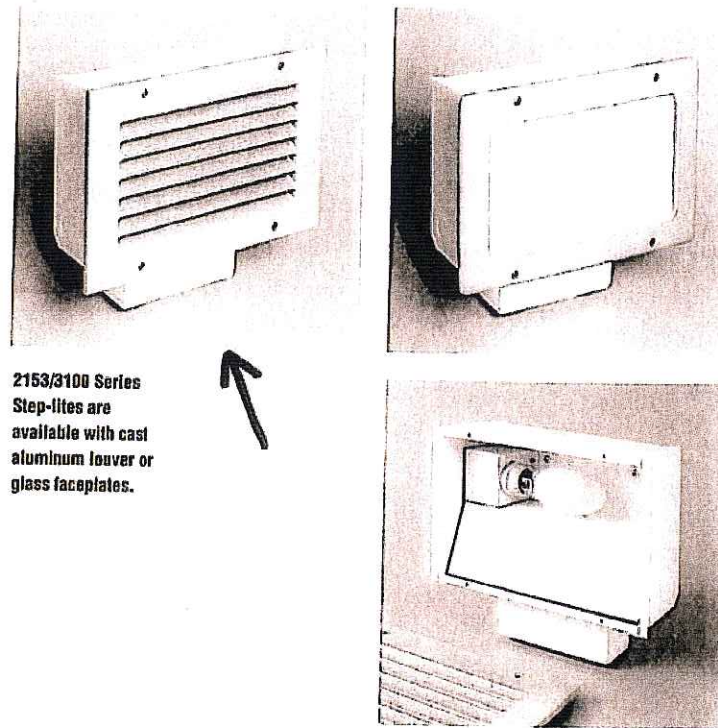
The 2153/3100 Series Step-lites are suitable for concrete pour/block wall mounting in outdoor installations. Fluorescent 2153 Series fixtures are suitable for any wall construction. They are ideal in walls, ramps, and stairwells where high light levels are desirable.

Custom

If your project demands a special fixture we would be pleased to discuss the production of custom fixtures to suit your specific conditions. For more information on our custom capabilities, please contact your local Cole representative.

Incandescent, fluorescent and high intensity discharge (HID) lamps may be specified for this series.

The junction box on Cole Step-lites may be field mounted to the back or bottom of the fixture.



2153/3100 Series Step-lites are available with cast aluminum louver or glass faceplates.



C. W. Cole & Company, Inc.  
2560 N. Rosemead Boulevard  
South El Monte, CA 91733-1593

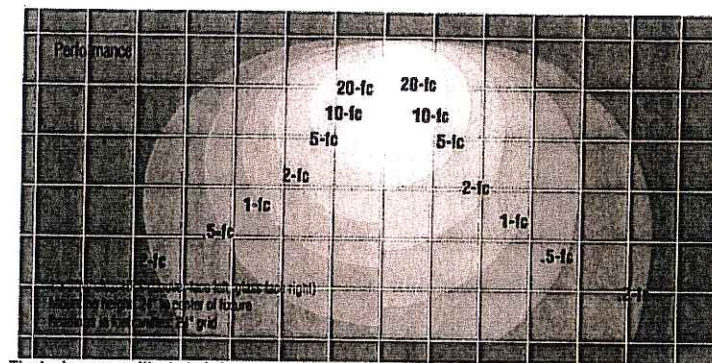
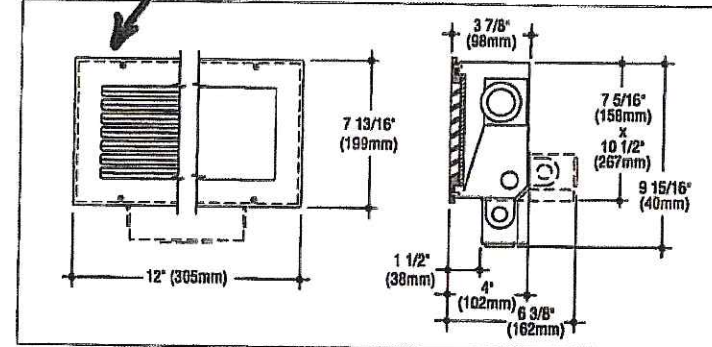
Fax (626) 443-9253  
Tel. (626) 443-2473  
info@colelighting.com  
www.colelighting.com

COLE LIGHTING

Step-lites

B

2153/3100 SERIES



The Isolux curves illustrated above show the footcandle distribution for a 3100 Series fixture with a 50W clear HPS lamp mounted at a height of 2'-0". The conversion chart provides the light output figures for various lamp types at four mounting heights. The lamp height determines the scale of the grid, i.e., for a fixture mounted at 3'-0" the grid becomes 3'-0" x 3'-0". To calculate the footcandles for each Iso curve use the conversion factors shown in the chart as multipliers of the footcandles indicated for each Iso curve. IES formal photometric files are available.

Isolux Footcandle Conversion Chart

Lamp Type	Lum.	Mounting Height and Grid Scale			
		1'-0"	1'-6"	2'-0"	3'-0"
100W A21 inc.	1690	1.70	0.75	0.42	0.18
26W fluor.	1800	1.81	0.80	0.45	0.19
28W fluor.	1600	1.61	0.71	0.40	0.17
35W clear HPS	2250	2.25	1.00	0.56	0.25
50W clear HPS	4000	4.00	1.78	1.00	0.44
50W clear MH	3400	3.40	1.51	0.85	0.38

Catalog Numbers

Lamps	Faceplate	
	Louver	Glass
100W A21 medium base incandescent	T 2153	T 2153G
26W (CFQ26W/G24d) fluorescent, 32°F	F 2153-26	F 2153G-26
28W (CFQ27W/GX32d) fluorescent, -22°F	F 2153-28	F 2153G-28
35W high pressure sodium, medium base	HPS 3135	HPS 3135G
50W high pressure sodium, medium base	HPS 3150	HPS 3150G
50W metal halide, medium base	HMH 3150	HMH 3150G

Options

Ballasts: 277V ballast. Add suffix -277.  
High power factor (fluor.). Add suffix -HPF.  
Electronic ballast. Add suffix -EB.  
Bronze Faceplate: Satin finished, red brass faceplate. Add suffix -B.  
Tamperproof Screws: Tamperproof allen head faceplate screws. Add suffix -TP.  
Alternate Faceplate Color: Black or white. Add suffix -BLK or -WHT.

Junction Box: Bottom or back mounted junction box as required for feed-thru. Standard on HID models. Add suffix -J.  
Plastic Microlouer: 3M Light Control Film behind clear tempered glass. (Fluorescent only) Add suffix -PM  
Emergency Battery: Provides up to 90 minutes operation. (Fluorescent only) Add suffix -EM.

Specifications

Construction

- Fixture housing is constructed from die-formed 16 gauge steel finished with a white polyester coating
- Faceplate is cast aluminum with metallic aluminum powder coating, gasketed and retained by stainless steel screws
- Diffuser (omitted in non-weatherproof louver faceplate models) is frosted tempered glass, set in silicone sealant in weatherproof models
- Reflector is constructed of die-formed semi-specular aluminum
- Junction box is cast aluminum with polyester coating; optional on incandescent and fluorescent models, standard on HID models
- ETL/cETL listed, suitable for wet locations
- F2153 is suitable for any wall construction; all other models are for concrete pour/block wall construction only.

Electrical

- Fixture is wired for lamps of varying types and wattages. Ballasts are standard 120V (277V optional)
- Junction box allows 8 wire thru-wiring, four in and four out. Provided with two 1/2" tapped conduit entrances in the bottom and one 1/2" conduit entrance in each side.

Mounting

Housing has flanges with holes for mounting.

How to Specify

1. Select catalog number with desired features.
2. Add suffixes for options required to meet job conditions.



C. W. Cole & Company, Inc.  
2560 N. Rosemead Boulevard  
South El Monte, CA 91733-1593

Fax (626) 443-9253  
Tel. (626) 443-2473  
info@colelighting.com  
www.colelighting.com

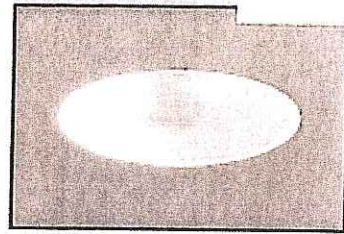
# OM6100ED17MHSPL

## 6" Metal Halide Splay Lens Reflector Downlights

REVELATION  
SPEC SHEET



CAT. NO: \_\_\_\_\_  
TYPE: \_\_\_\_\_ PROJECT: \_\_\_\_\_



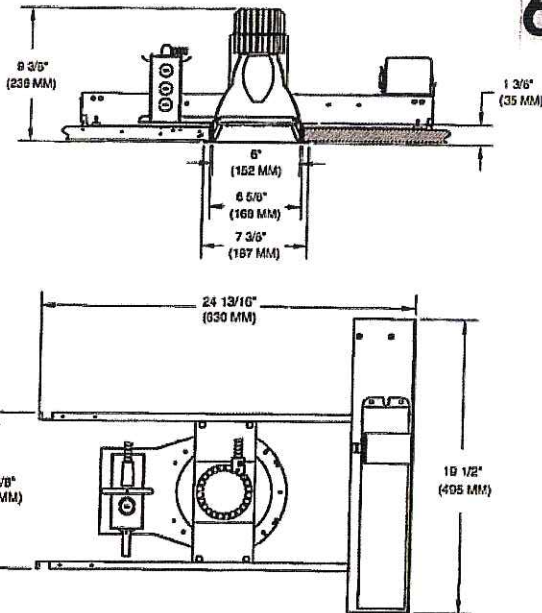
### PRODUCT INFORMATION

#### Applications

A soft edged, lensed downlight for use with energy efficient metal halide lamps. Provides broad, uniform light distribution while concealing lamp image and maintaining good visual cutoff. Ideal for areas such as lobbies, corridors, canopies, soffits, restaurants and offices.

#### Specifications

- Mounting pan** - Precision die-stamped 16 gauge galvanized steel mounting pan and yoke assembly. Accommodates ceiling materials up to 1-3/8" thick.
- Installation** - Mounting pan has pre-installed C-channel with vertical and horizontal adjustments. Ballast, junction box and mounting brackets are accessible from below ceiling. For 27" flat bar hanger pair, specify FB accessory, ordered separately.
- Splay trim** - Spun aluminum regressed splay trim with white powder paint finish. Torsion spring mounting for ease of installation. Flat fresnel and prismatic lens for smooth, even distribution of light. Flat clear lens for enclosed application.
- Ballast** - Totally enclosed and encapsulated, high power factor reactance ballast with internal ignitor, thermally protected. Ballast requires a minimum starting temperature of -20°F. Standard ballast is 120/277 dual tap, 60 hertz. For remote operation, voltages other than 120 or 277 or 50 HZ operation, consult factory.
- Socket enclosure** - Die cast aluminum heat sink, medium base 4 K.V. pulse rated porcelain socket with extended nickel-plated copper screw shell and 200°C wire positions lamp at optical focal plane of reflector for maximum performance. Lamp (ordered separately).
- Junction box** - Extra large 43.75-cubic inch 16 gauge galvanized steel with snap-on covers. Approved for through wiring with up to 8 #12 AWG conductors.
- Thermal protection** - A thermal protection device which meets all U.L. and NEC requirements is standard.
- U.L. Listed** - For use in wet locations in covered ceiling applications only. Approved for Through Branch Circuit Wiring. I.B.E.W. union made.



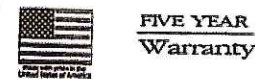
6

\* Canadian Specifications may vary from those shown, consult Canadian Division.

### CATALOG SYSTEM AND OPTIONS

EXAMPLE OF COMPLETE CATALOG NUMBER: **OM6100ED17MHSPL-FL-120/277**

OMEGA Aptr.	Lamp (by others)	Lamp Type	Reflector Type	Lens (required)	Frame Options	Slope Ceiling Adapter Angle	Supply Voltage
OM6	150 150 watt	MH Metal Halide	SPL Splay Lens (white)	FL Fresnel Lens	SA6 Sloped Ceiling	5	120/277
	100 ED17		CSSPL Clear Semi-Specular	PL Prismatic Lens	Adaptor	10	347*
	70 ED17		BBSPL Black Baffle Splay	CL Clear Lens	FZ120 Fusing	15	
	50 ED17		BKSPL Splay Lens (black)		FZ277 Fusing	20	
					FZ347 Fusing	25	
					QEM Emergency	30	
					QR Quartz Restrike		
					FB Flat Bar Hangers		



OMEGA LIGHTING

OMEGA LIGHTING:  
776 South Green St., Tupelo, MS 38804  
Phone 662.842.7212 FAX 662.841.5501

CANADIAN DIVISION:  
189 Bullock Drive, Markham, Ontario, Canada L3P 1W4  
Phone 905.294.9570 FAX 800.268.0003

omegalighting.com

REV. 06/04  
SPEC SHEET # **RV4-5**

REVELATION

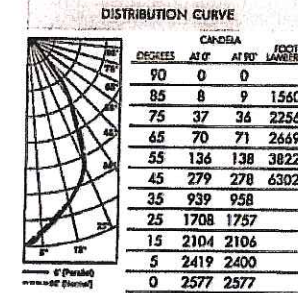


### OM6100ED17MHSPL-FL Photometric Data

#### Fresnel Lens with White Regressed Splay

Report Number: 20746  
Lamp: (1) 100W MH  
Total Lumens: 8000  
Fixture Efficiency: = 33.5%  
IES File: F20746.IES  
S/MH Ratio = 0.9, 0.9  
Beam Angle: 59.78

CEILING HEIGHT (FT.)	FOOT-CANDLES	LEAK RADIANCE (FT-CAND)
8	85.2	6-4
10	45.8	8-7
12	28.6	10-11
14	19.5	13-3
16	14.1	15-6



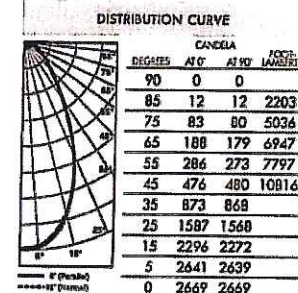
RC	80	70	50
RW	50	30	50
0	40	39	36
1	36	35	34
2	34	33	32
3	30	29	28
4	28	26	26
5	26	23	23
6	25	22	22
7	23	20	20
8	20	19	19
9	20	17	17
10	19	17	17

### OM6100ED17MHSPL-PL Photometric Data

#### Prismatic Lens with White Regressed Splay

Report Number: 20596  
Lamp: (1) 100W MH  
Total Lumens: 8000  
Fixture Efficiency: = 38.1%  
IES File: F20596.IES  
S/MH Ratio = 0.9, 0.8  
Beam Angle: 56.25

CEILING HEIGHT (FT.)	FOOT-CANDLES	LEAK RADIANCE (FT-CAND)
8	89.2	5-11
10	47.4	8-0
12	29.6	10-2
14	20.2	12-4
16	14.6	14-5



RC	80	70	50
RW	50	30	50
0	45	44	41
1	40	40	39
2	36	36	34
3	34	33	32
4	30	30	29
5	28	26	27
6	26	26	25
7	25	23	23
8	23	23	22
9	20	20	20
10	20	17	17

\*Readings at working plane, 2'6" above floor. Beam Angle and Diameter Cutoff at 50% of max. Candlepower Coefficients used at effective reflectances of: 70% Ceiling, 50% Walls, 20% Floor

To convert values for optional reflector colors, multiply by:  
Gold .90 Bronze .82 Pewter .87

Additional photometric test files are available @ [omegalighting.com](http://omegalighting.com)

OMEGA LIGHTING

OMEGA LIGHTING:  
776 South Green St., Tupelo, MS 38804  
Phone 662.842.7212 FAX 662.841.5501

CANADIAN DIVISION:  
189 Bullock Drive, Markham, Ontario, Canada L3P 1W4  
Phone 905.294.9570 FAX 800.268.0003



**Description**

The Zuma 1203 is a rugged and attractive ADA-compliant step light for use with a low voltage, 13W incandescent lamp (provided). It mounts directly to any non-combustible surface, yet projects only 1-3/4" from the mounting surface. The adjustable 'eyelid' style faceplate rotates 360° and shields the lamp source to provide soft, comfortable illumination.

Catalog #	Type
Project	
Comments	Date
Prepared by	

**SPECIFICATION FEATURES**

**A ... Material**

Mounting base is machined from corrosion-resistant 6060-T6 aluminum billet. Faceplate/housing is cast from corrosion-resistant silicone aluminum.

**B ... Finish**

Fixtures are double protected by a chromate conversion undercoating and polyester powdercoat paint finish, surpassing the rigorous demands of the outdoor environment. A variety of standard colors are available.

**C ... Gasket**

Housing and faceplate are sealed with a high temperature silicone o-ring gasket to prevent water intrusion.

**D ... Lens**

Diffused tempered glass lens, factory sealed with high temperature adhesive to prevent water intrusion and breakage due to thermal shock.

**E ... Hardware**

Stainless steel hardware is standard to provide maximum corrosion-resistance.

**F ... Socket**

Ceramic socket with 250° C Teflon® coated lead wires and wedge base.

**G ... Electrical**

Remote 12V transformer required (not included). Available from Lumière as an accessory - see the Accessories & Technical Data section of this catalog for details.

**H ... Lamp**

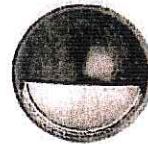
Included as standard.

**I ... Labels & Approvals**

UL and cUL listed, standard wet label. Manufactured to ISO 9001-2000 Quality Systems Standard. IBEW union made.

**J ... Warranty**

Lumière warrants its fixtures against defects in materials & workmanship for three (3) years. Auxiliary equipment such as transformers, ballasts and lamps carry the original manufacturer's warranty.

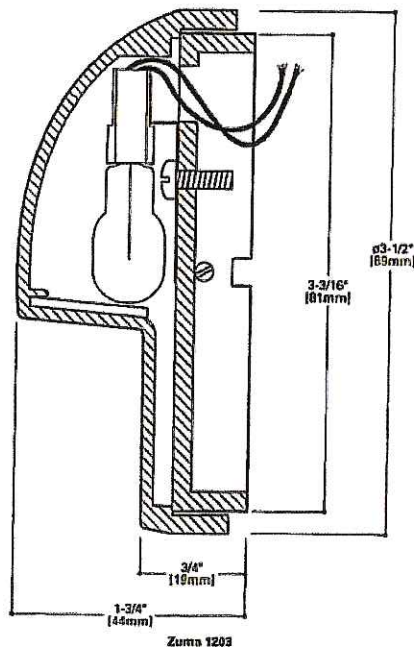


**ZUMA  
1203**

**13W (max.) T5  
Incandescent  
Low Voltage**

**Step Light**

**ADA-COMPLIANT**



**COOPER** Lighting  
www.cooperlighting.com

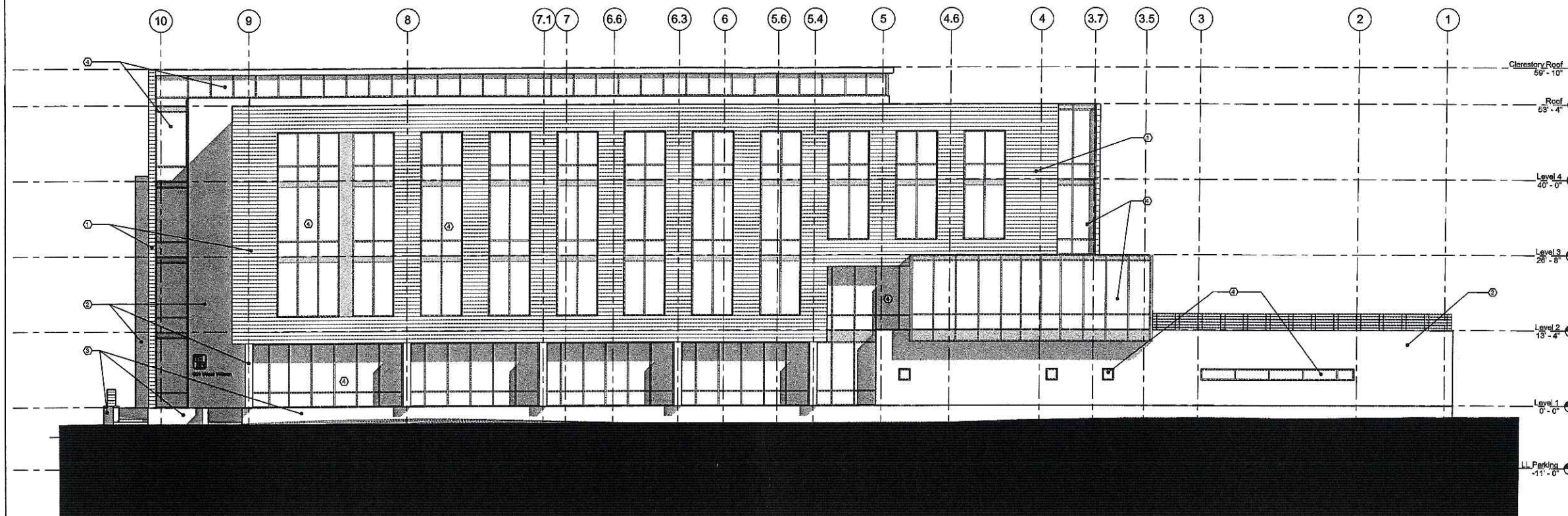
**Specifications and Dimensions subject to change without notice.**  
Consult your representative for additional options and fixtures.

ADL032511

Consultants:

Notes:

- ① BRICK
- ② CAST STONE
- ③ KASOTA STONE
- ④ GLAZING WITH BRONZE COLORED FRAMING AND PANELS
- ⑤ TBD- FLAT BEAM COPPER PANELS OR CEDAR WOOD SIDING
- ⑥ LOUVERS



North Elevation  
1/8" = 1'-0"


3/15/08	UDC INITIAL/FINAL APPROVAL	
2/22/08	MADISON PLAN COMMISSION REVIEW	
Date	Issuance/Revisions	Symbol

**National Conference  
of Bar Examiners  
NCBE**

Wilson and South Bedford St.  
Madison, Wisconsin

**NORTH BUILDING  
ELEVATION**

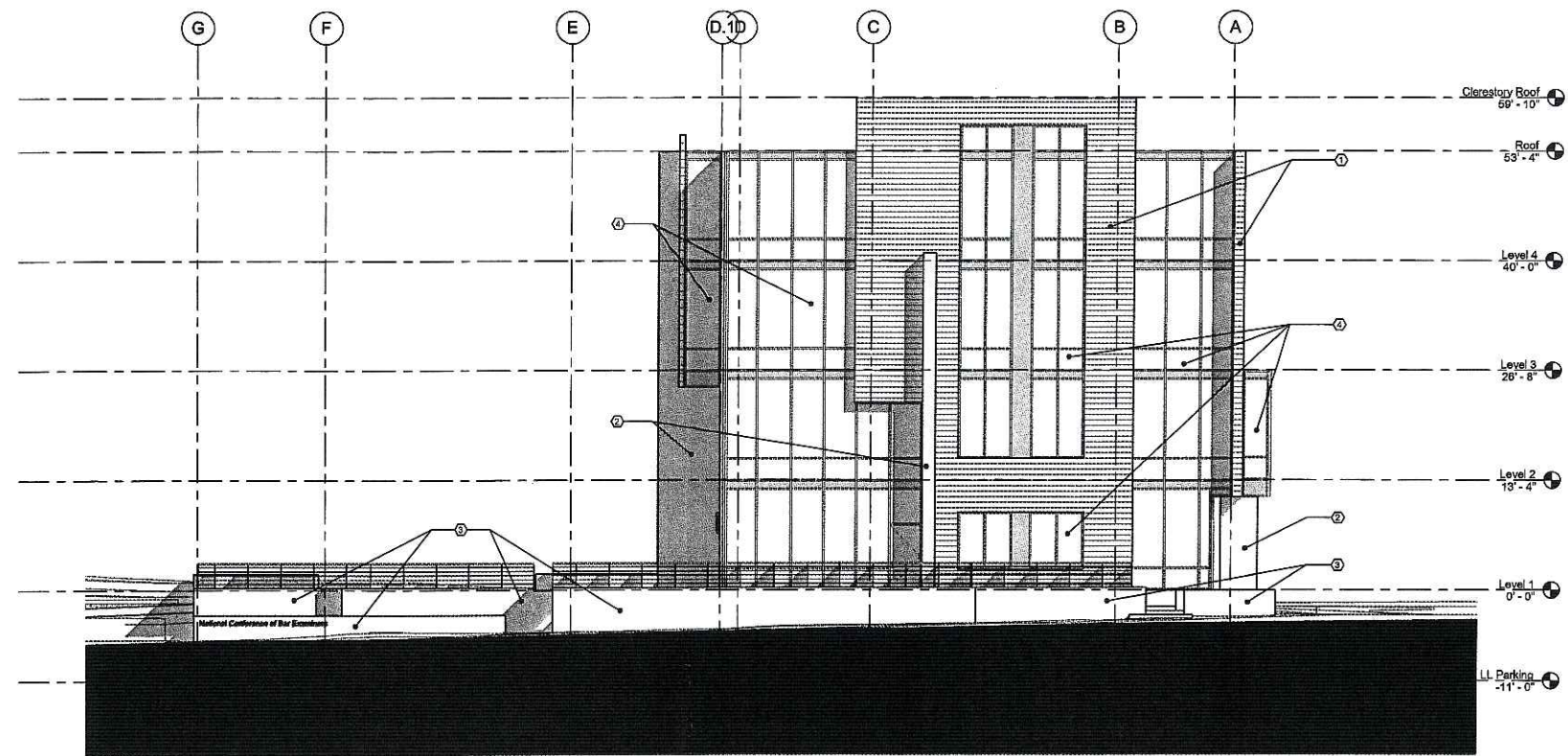
PL/Report Number:  
2003.20.02  
Drawn By:  
MCH

**A201**

Consultants:

Notes:

- ① BRICK
- ② CAST STONE
- ③ KASOTA STONE
- ④ GLAZING WITH BRONZE COLORED FRAMING AND PANELS
- ⑤ TBD; FLAT BEAM COPPER PANELS OR CEDAR WOOD SIDING
- ⑥ LOUVERS



① East Elevation  
1/8" = 1'-0"


3/16/06	UDC INITIAL/FINAL APPROVAL	
2/22/06	MADISON PLAN COMMISSION REVIEW	
Date	Issuance/Revisions	Symbol

**National Conference  
of Bar Examiners**  
NCBE

Wilson and South Bedford St.  
Madison, Wisconsin

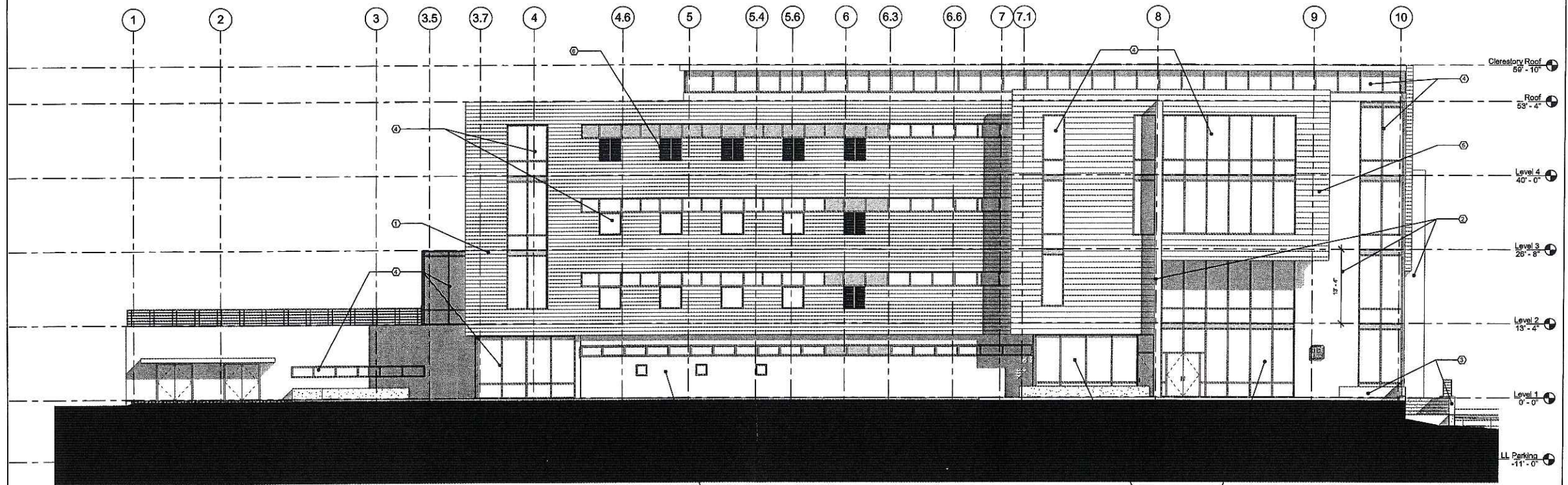
Drawing Title:  
**EAST BUILDING ELEVATION**

Plot/Registration: 2003.20.02	Drawing No: <b>A202</b>
Drawn by: AMH	

Consultants:

Notes:

- ① BRICK
- ② CAST STONE
- ③ KASOTA STONE
- ④ GLAZING WITH BRONZE COLORED FRAMING AND PANELS
- ⑤ TBD: FLAT BEAM COPPER PANELS OR CEDAR WOOD SIDING
- ⑥ LOUVERS



① South Elevation  
1/8" = 1'-0"

Date	Issuance/Revisions	Symbol
3/15/06	UDC INITIAL/FINAL APPROVAL	
2/22/06	MADISON PLAN COMMISSION REVIEW	

**National Conference  
of Bar Examiners  
NCBE**

Wilson and South Bedford St.  
Madison, Wisconsin

**SOUTH BUILDING  
ELEVATION**

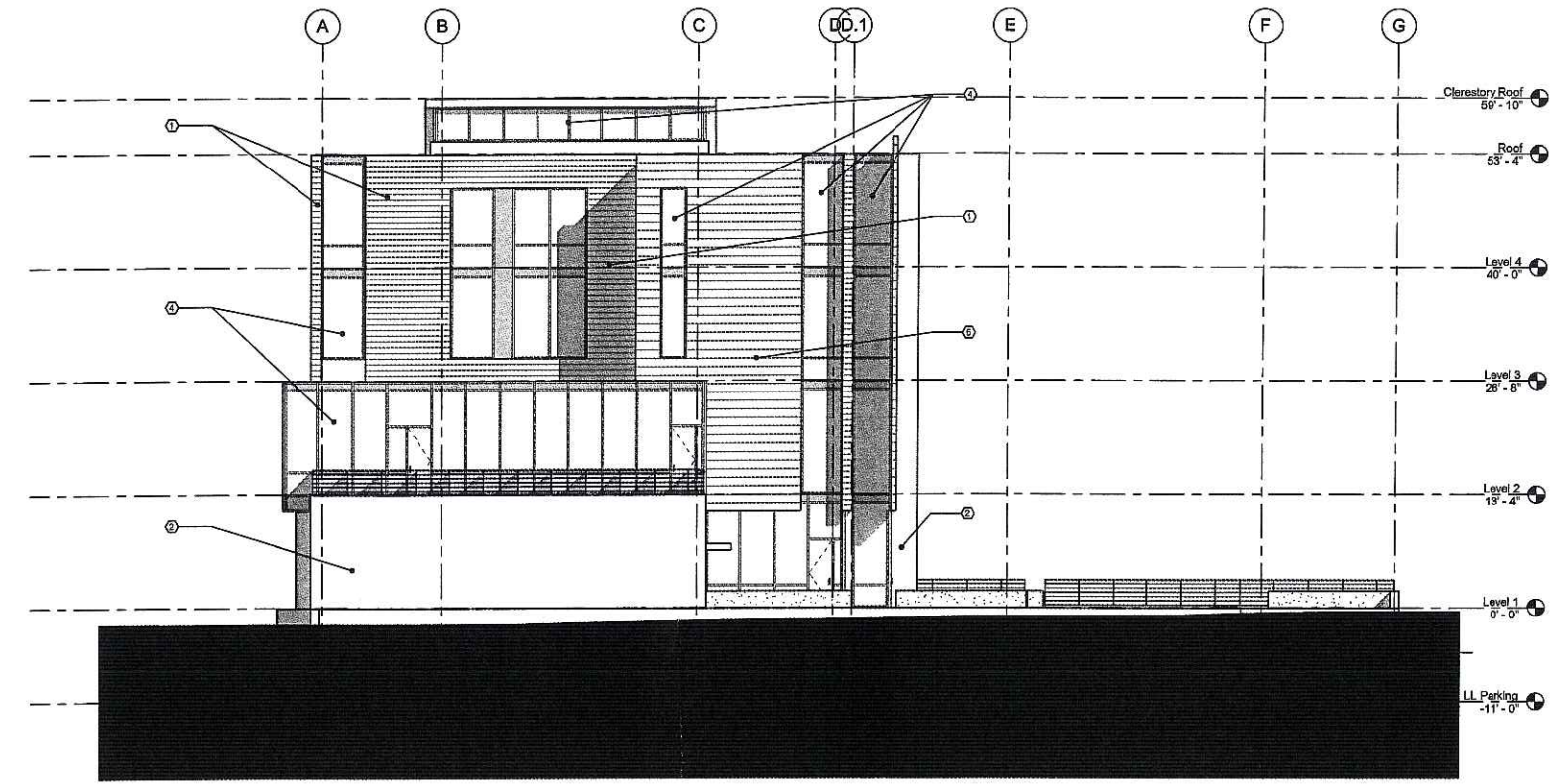
Project Number: 2003.20.02  
Drawing No: **A203**



Consultants:

Notes:

- ① BRICK
- ② CAST STONE
- ③ KASOTA STONE
- ④ GLAZING WITH BRONZE COLORED FRAMING AND PANELS
- ⑤ TBD: FLAT SEAM COPPER PANELS OR CEDAR WOOD SIDING
- ⑥ LOUVERS



① West Elevation  
1/8" = 1'-0"


3/15/06	UDC INITIAL/FINAL APPROVAL	
2/22/05	MADISON PLAN COMMISSION REVIEW	
Date	Issuance/Revisions	Symbol

National Conference  
of Bar Examiners  
NCBE

Wilson and South Bedford St.  
Madison, Wisconsin

WEST BUILDING ELEVATION

Project Number: 2003.20.02	Drawn by: MCH	Scale: <b>A204</b>
-------------------------------	------------------	-----------------------