

REVISIONS	
DATE	1-12-05
DRAWN	DAN PEPLINSKI
CHECKED	JEFF BAHLING
DOCUMENT NO.	03117

LANDSCAPE ARCHITECTURE
 GOLF COURSE ARCHITECTURE
 LAND SURVEYING
 SITE CONSTRUCTION MANAGEMENT
 SITE MAINTENANCE
 IRRIGATION DESIGN

retter corporation
 1400 BUSINESS PARK DRIVE • STEWENS POINT, WI 54681
 TELEPHONE 715-341-2833 • FAX 715-341-0437 • EMAIL retter@retter.com

SITE SURVEY

MONONA GROVE SCHOOL DISTRICT
 SINGLE FAMILY HOUSES
 AND TENNIS COURTS

ES-1

BENCH MARK

ELEVATIONS BASED ON DATUM RECEIVED FROM THE CITY OF MONONA ENGINEERING DEPARTMENT, CITY OF MONONA, WI
 TOP OF HYDRANT, LOCATED 415' SOUTH OF COLD SPRINGS AVE. 12' EAST OF MONONA DRIVE.
 ELEVATION = 63.35

DESCRIPTION

LOCATED IN THE WEST 1/2 HALF OF THE NW 1/4 OF SECTION 16, TOWNSHIP 7 NORTH, RANGE 10 EAST, CITY OF MADISON, DANE COUNTY WISCONSIN.

UNDERGROUND UTILITIES

THESE RECORD DRAWINGS HAVE BEEN PREPARED, IN PART, ON THE BASIS OF INFORMATION COMPILED AND FURNISHED BY OTHERS. THE SURVEYOR AND ARCHITECT WILL NOT BE RESPONSIBLE FOR ANY ERRORS OR OMISSIONS WHICH HAVE BEEN INCORPORATED INTO THIS DOCUMENT AS A RESULT.
 SOME UTILITIES HAVE BEEN LOCATED BY MAPS PROVIDED BY OTHERS - LOCATIONS ARE APPROXIMATE. PRIVATE UTILITIES MAY EXIST BUT ARE NOT SHOWN ON MAP. CONTACT DIGGERS HOTLINE FOR LOCATIONS.
 FIELD VERIFY SANITARY AND STORM SEWER PIPE SIZE AND LOCATION.
 UNDERGROUND UTILITIES SHOWN ON THIS MAP ARE BASED IN PART ON MARKINGS BY DIGGERS HOTLINE. (TICKET #)

SURVEY LEGEND

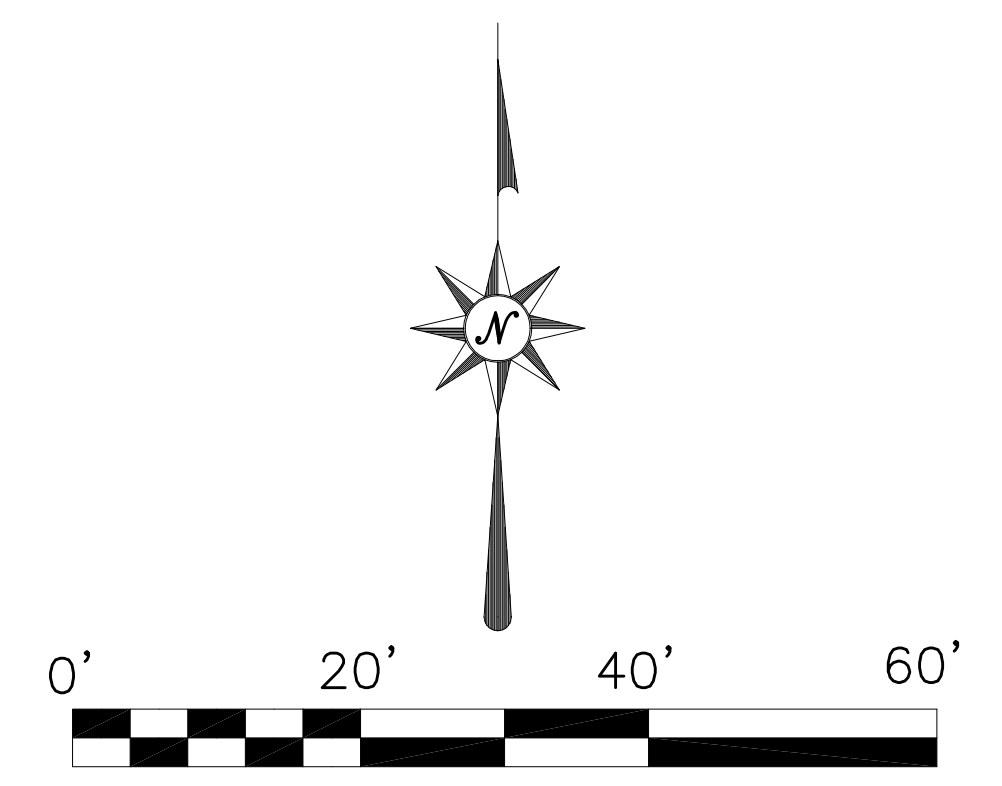
- These standard symbols will be found in the drawing.
- LIGHT POLE
 - POWER POLE
 - GUY
 - TELEPHONE PEDESTAL
 - TELEPHONE MANHOLE
 - SANITARY MANHOLE
 - STORM MANHOLE
 - CATCH BASIN
 - WATER VALVE
 - HYDRANT
 - 1" IRON PIPE FOUND
 - #6 RE-BAR FOUND
 - COMPUTED PROPERTY CORNER
 - FENCE
 - SANITARY SEWER
 - STORM SEWER
 - POWER OVERHEAD
 - BURIED ELECTRIC
 - BURIED GAS
 - BURIED TELEPHONE
 - WATERMAIN
 - FIBER OPTICS
 - EDGE OF BITUMINOUS
 - TREE
 - PINE TREE
 - BUSH/SHRUB
 - CEDAR TREE
 - ELECTRIC METER
 - GAS METER
 - CONTOUR LINE
 - SIGN

LEGAL DESCRIPTIONS

- 4217 JEROME DRIVE**
 LOT 1 OF CERTIFIED SURVEY MAP NO 2069 RECORDED IN DANE COUNTY REGISTER OF DEEDS IN VOLUME 8 PAGE 255 OF CERTIFIED SURVEYS.
- 4221 JEROME DRIVE**
 LOT 2 OF CERTIFIED SURVEY MAP NO 2069 RECORDED IN DANE COUNTY REGISTER OF DEEDS IN VOLUME 8 PAGE 255 OF CERTIFIED SURVEYS.
- 4316 MONONA DRIVE**
 QUAKER HEIGHTS EXC E 134 FT THEREOF LOT 1, BLK 2, EXCEPT THAT PART CONVEYED FOR ROAD ROW IN DOC 4888913.

SITE LEGEND

- 3" BITUMINOUS PAVEMENT WITH TENNIS COURT SURFACING
- 3" BITUMINOUS PAVEMENT W/O TENNIS COURT SURFACING
- 4" REINFORCED CONCRETE WALK
- 8" REINFORCED CONCRETE WALK
- BRICK PAVERS



RETTER CORPORATION HOLDS THE RIGHTS TO COMPASSION AND TO THESE RECORDS DRAWINGS AND DOCUMENTS. NO REPRODUCTION, COPYING, ALTERATION, MODIFICATION, USAGE, INCORPORATION INTO OTHER DOCUMENTS OR ASSIGNMENT OF THE SAME MAY OCCUR WITHOUT THE PRIOR WRITTEN PERMISSION OF RETTER CORPORATION.
 ©2004 RETTER CORPORATION

Demolish three single family houses, remove driveways, walks and utilities. Demolished areas to be seeded with turf grass and left open.

S 89°18'20" W 614.46' INV 33.83

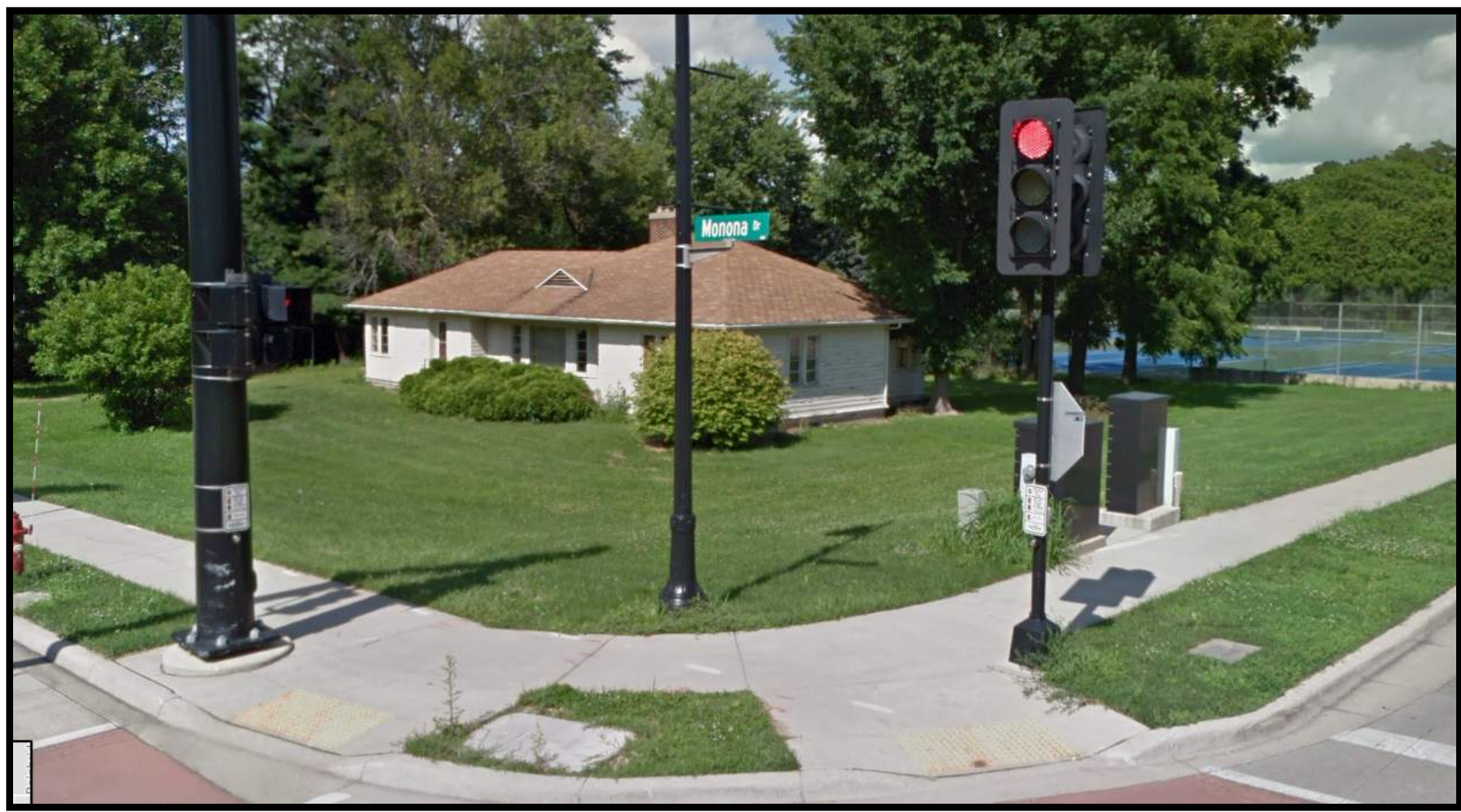
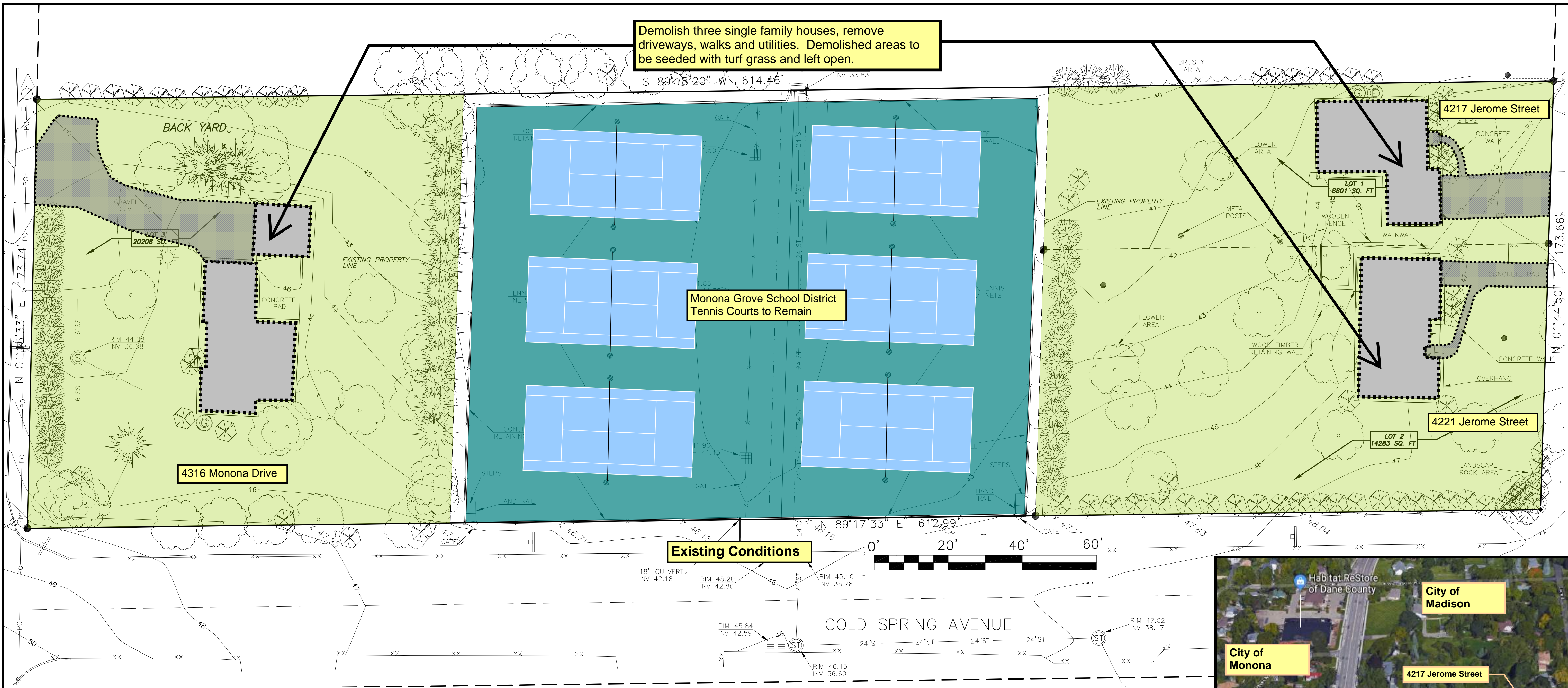
Monona Grove School District Tennis Courts to Remain

Existing Conditions

BUILDING DEMOLITION

4316 MONONA DRIVE 4217 JEROME STREET 4221 JEROME STREET MADISON, WI

FOR MONONA GROVE SCHOOL DISTRICT

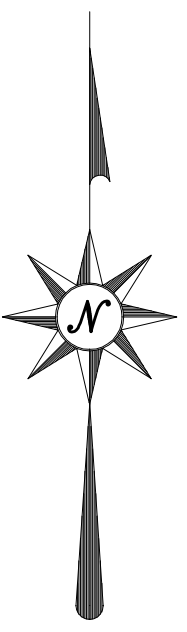


4316 Monona Drive



4221 Jerome Street

4217 Jerome Street

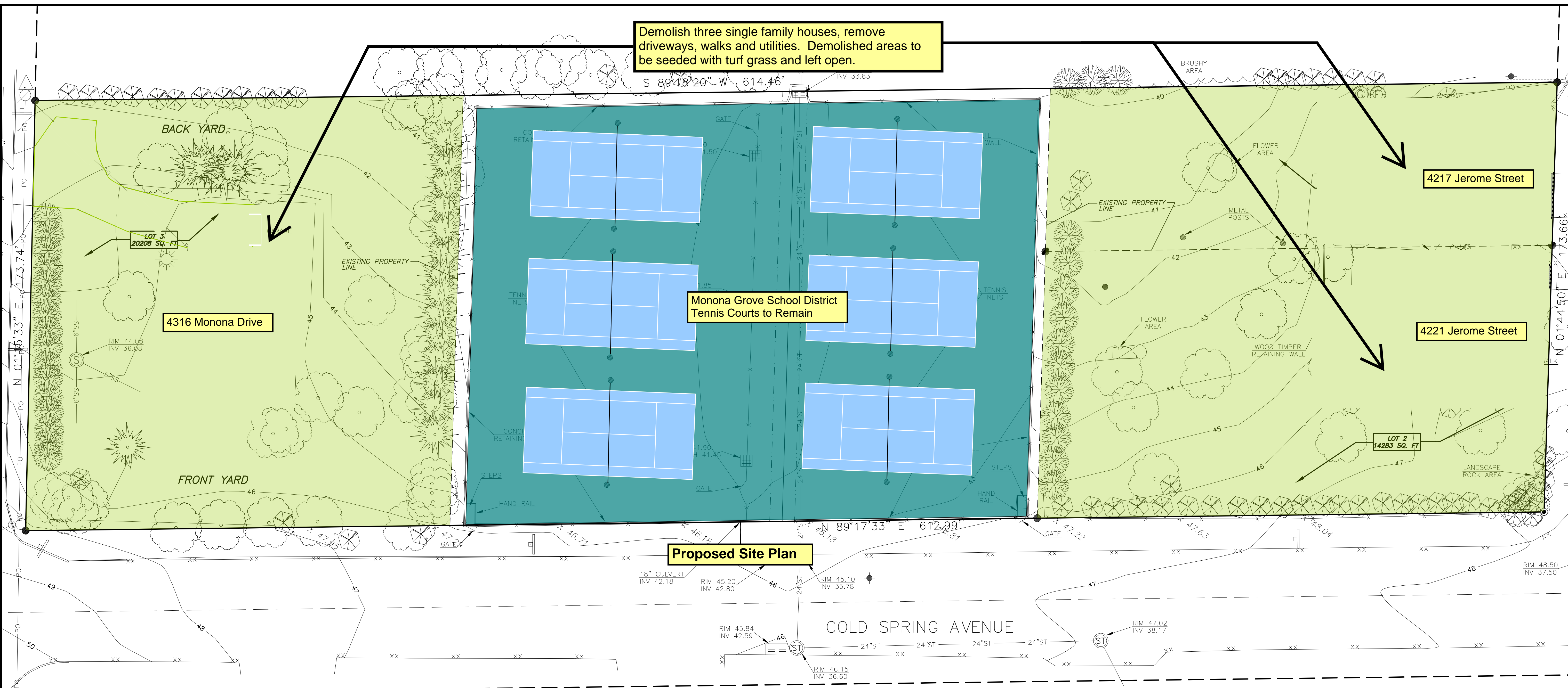


Site Location Map

Demolish three single family houses, remove driveways, walks and utilities. Demolished areas to be seeded with turf grass and left open.

Monona Grove School District
Tennis Courts to Remain

Proposed Site Plan



BUILDING DEMOLITION
4316 MONONA DRIVE 4217 JEROME STREET 4221 JEROME STREET
MADISON, WI
FOR
MONONA GROVE SCHOOL DISTRICT