



Note: Owners' names are shown for reference purposes only and are subject to change prior to the transfer of land interests to the City of Madison.

ROW ACQUIRED
DOC 1011168
DOC 1161413
DOC 2227035



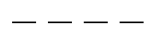
PLE - Public Pedestrian and Bicycle Path



TLE - Grading and Sloping



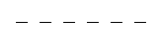
OVERHEAD UTIL. LINE



EXIST. R/W LINE



EXIST. PROPERTY LINE



EXIST. LOT LINE



EXISTING EASEMENT



POWER POLE

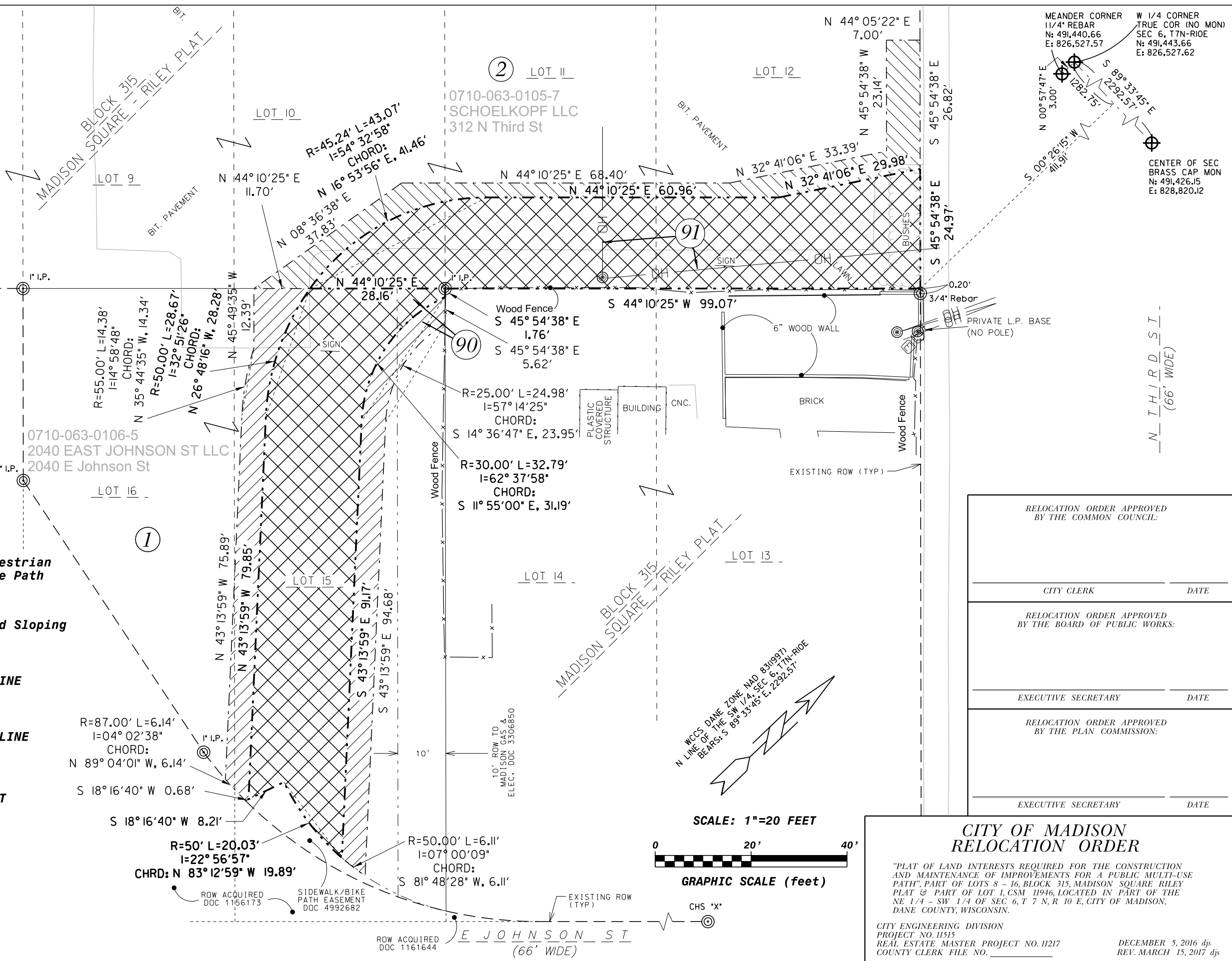


ELEC. PEDESTAL



**FOUND LOT CORNER
TYPE/SIZE NOTED**

SHEET 1 OF 3



RELOCATION ORDER APPROVED BY THE COMMON COUNCIL:	
CITY CLERK	DATE
RELOCATION ORDER APPROVED BY THE BOARD OF PUBLIC WORKS:	
EXECUTIVE SECRETARY	DATE
RELOCATION ORDER APPROVED BY THE PLAN COMMISSION:	
EXECUTIVE SECRETARY	DATE

**CITY OF MADISON
RELOCATION ORDER**

"PLAT OF LAND INTERESTS REQUIRED FOR THE CONSTRUCTION AND MAINTENANCE OF IMPROVEMENTS FOR A PUBLIC MULTI-USE PATH", PART OF LOTS 8 - 16, BLOCK 315, MADISON SQUARE RILEY PLAT & PART OF LOT 1, CSM 11946, LOCATED IN PART OF THE NE 1/4 - SW 1/4 OF SEC 6, T 7 N, R 10 E, CITY OF MADISON, DANE COUNTY, WISCONSIN.

CITY ENGINEERING DIVISION
PROJECT NO. 11515
REAL ESTATE MASTER PROJECT NO. 11217
COUNTY CLERK FILE NO. _____

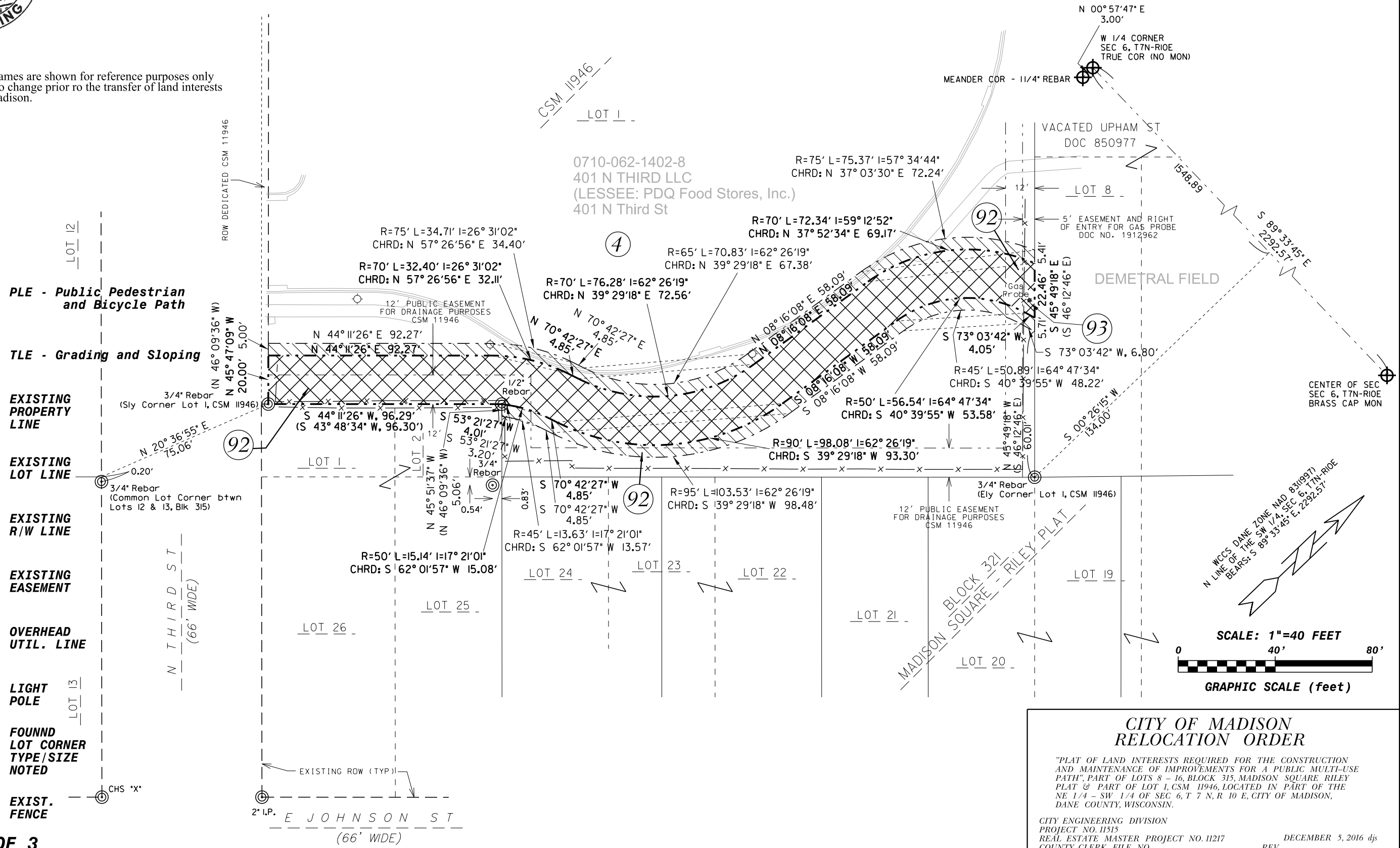
DECEMBER 5, 2016 djs
REV. MARCH 15, 2017 djs



Note: Owners' names are shown for reference purposes only and are subject to change prior to the transfer of land interests to the City of Madison.

RELOCATION ORDER APPROVED BY THE COMMON COUNCIL:		RELOCATION ORDER APPROVED BY THE BOARD OF PUBLIC WORKS:		RELOCATION ORDER APPROVED BY THE PLAN COMMISSION:	
CITY CLERK	DATE	EXECUTIVE SECRETARY	DATE	EXECUTIVE SECRETARY	DATE

- PLE - Public Pedestrian and Bicycle Path
- TLE - Grading and Sloping
- EXISTING PROPERTY LINE
- EXISTING LOT LINE
- EXISTING R/W LINE
- EXISTING EASEMENT
- OVERHEAD UTIL. LINE
- LIGHT POLE
- FOUND LOT CORNER TYPE/SIZE NOTED
- EXIST. FENCE



**CITY OF MADISON
RELOCATION ORDER**

"PLAT OF LAND INTERESTS REQUIRED FOR THE CONSTRUCTION AND MAINTENANCE OF IMPROVEMENTS FOR A PUBLIC MULTI-USE PATH", PART OF LOTS 8 - 16, BLOCK 315, MADISON SQUARE RILEY PLAT & PART OF LOT 1, CSM 11946, LOCATED IN PART OF THE NE 1/4 - SW 1/4 OF SEC. 6, T 7 N, R 10 E, CITY OF MADISON, DANE COUNTY, WISCONSIN.

CITY ENGINEERING DIVISION
PROJECT NO. 11515
REAL ESTATE MASTER PROJECT NO. 11217
COUNTY CLERK FILE NO. _____

DECEMBER 5, 2016 djs
REV.



SCHEDULE OF INTERESTS REQUIRED						
PARCEL #	OWNER NAME	PLE AREA REQUIRED	TLE AREA REQUIRED	CONSENT TO OCCUPY	RELEASE OF RIGHTS / RIGHT OF ENTRY	DOCUMENT NUMBER
①	2040 EAST JOHNSON ST, LLC	2266 SQ FT 0.0520 ACRES	1174 SQ FT 0.0270 ACRES			5183587
②	SCHOELKOPF LLC	2295 SQ FT 0.0527 ACRES	739 SQ FT 0.0170 ACRES			5183981
④	401 N THIRD, LLC	6731 SQ FT 0.1545 ACRES	2884 SQ FT 0.0662 ACRES			3866010
⑨0	MADISON GAS & ELECTRIC CO			49 SQ FT 0.0011 ACRES	68 SQ FT 0.0016 ACRES	3306850
⑨1	MADISON GAS & ELECTRIC CO				ELECTRIC TRANSMISSION FACILITIES	
⑨2	CITY OF MADISON			PLE: 1572 SQ FT 0.0361 ACRES	TLE: 331 SQ FT 0.0076 ACRES	4245745
⑨3	CITY OF MADISON			PLE: 110 SQ FT 0.0025 ACRES	TLE: 56 SQ FT 0.0013 ACRES	1912962

Note: Owners' names are shown for reference purposes only and are subject to change prior to the transfer of land interests to the City of Madison.

Surveyor's Certificate

State of Wisconsin)
County of Dane) SS

I, Jeffrey R. Quamme, Registered Land Surveyor in the State of Wisconsin, do hereby certify that I have surveyed and mapped the above platted property in accordance with the information furnished and in compliance with the requirements of Chapter AE-7, Wisconsin Administrative Code and Section 32.05(1) of the Wisconsin Statutes; and that the above map is an accurately scaled and dimensioned representation of such survey showing the location of the boundaries, visible buildings, if any, to the best of my knowledge and belief.

City of Madison, Wisconsin
By: Jeffrey R. Quamme

Jeffrey R. Quamme S-1922

Date

SHEET 3 OF 3

RELOCATION ORDER APPROVED BY THE COMMON COUNCIL:	RELOCATION ORDER APPROVED BY THE BOARD OF PUBLIC WORKS:	RELOCATION ORDER APPROVED BY THE PLAN COMMISSION:
_____ CITY CLERK	_____ EXECUTIVE SECRETARY	_____ EXECUTIVE SECRETARY
_____ DATE	_____ DATE	_____ DATE

**CITY OF MADISON
RELOCATION ORDER**

"PLAT OF LAND INTERESTS REQUIRED FOR THE CONSTRUCTION AND MAINTENANCE OF IMPROVEMENTS FOR A PUBLIC MULTI-USE PATH", PART OF LOTS 8 - 16, BLOCK 315, MADISON SQUARE RILEY PLAT & PART OF LOT 1, CSM 11946, LOCATED IN PART OF THE NE 1/4 - SW 1/4 OF SEC 6, T 7 N, R 10 E, CITY OF MADISON, DANE COUNTY, WISCONSIN.

CITY ENGINEERING DIVISION
PROJECT NO. 11515
REAL ESTATE PROJECT NO. 11217
COUNTY CLERK FILE NO. _____

DECEMBER 5, 2016 djs
REV. MARCH 15, 2017