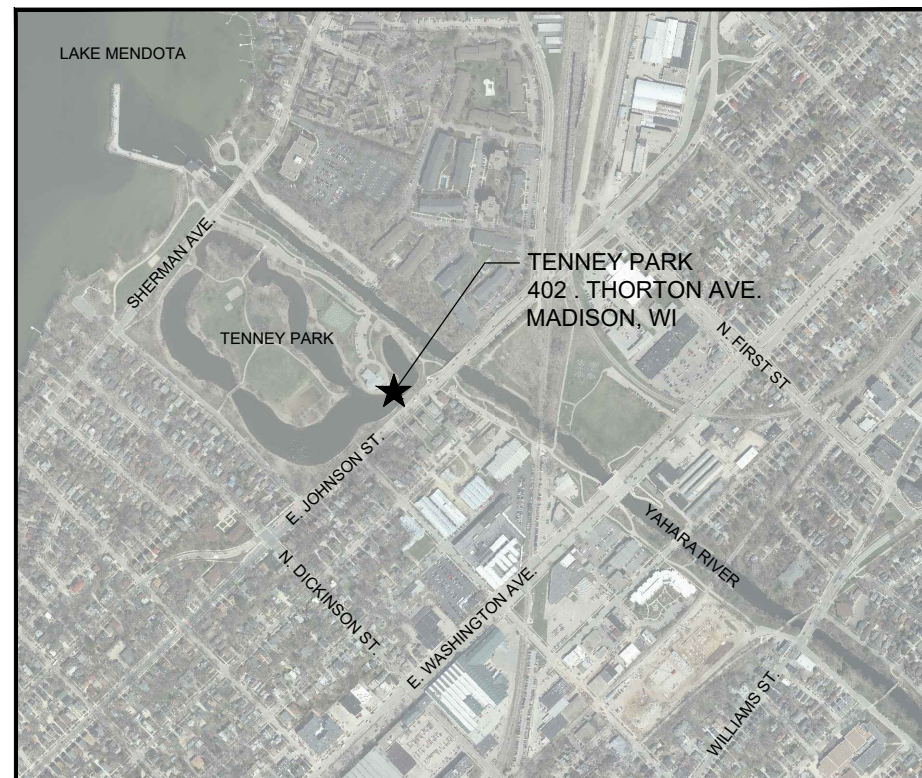


TENNEY PARK EAST JOHNSON ST. PEDESTRIAN BRIDGE WING WALLS

FOR THE

CITY OF MADISON PARKS DIVISION DANE COUNTY, WI

OCTOBER 2021



PROJECT LOCATION MAP
NO SCALE

| SHEET INDEX | |
|-------------|--|
| SHEET NO. | SHEET TITLE |
| 1 | TITLE SHEET |
| 2 | SITE ACCESS PLAN |
| 3 | SITE DEMOLITION AND EROSION CONTROL PLAN |
| 4 | RETAINING WALL PLAN AND DETAILS |

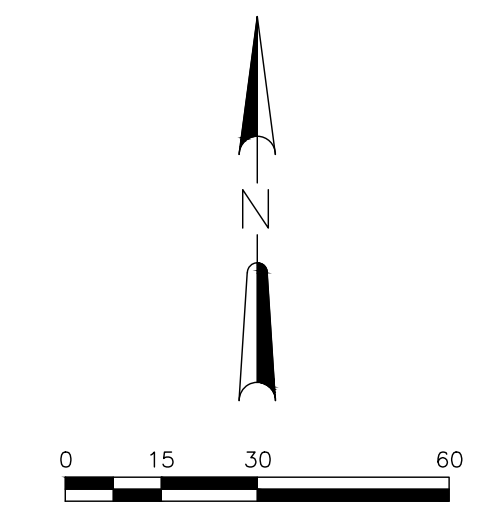
910 West Wingra Drive
Madison, WI 53715
608-251-4843
608-251-8655 fax
www.strand.com

CONTRACT 1-2021

FOR REVIEW, 10/2021



SHEET
1



KEY NOTES:

- ① CONTRACTOR MAY BLOCK-OFF AND OCCUPY UP TO TEN PARKING STALLS FOR STAGING EQUIPMENT AND MATERIALS.
- ② PUBLIC ACCESS TO PAVILION BUILDING SHALL BE MAINTAINED THROUGHOUT CONSTRUCTION.
- ③ INSTALL SIDEWALK CLOSURE SIGNS IN ACCORDANCE WITH CITY STANDARD DETAIL DRAWING 6.36, "TRAFFIC CONTROL SIDEWALK CLOSURE." SIDEWALK ALONG E. JOHNSON STREET SHALL ONLY BE CLOSED WHEN ACTIVELY WORKING ON THE EAST END OF THE BRIDGE. RE-OPEN SIDEWALK AT THE END OF EACH WORK DAY AFTER THE SIDEWALK HAS BEEN CLEARED OF EQUIPMENT AND MATERIALS.
- ④ BRIDGE IS FOR PEDESTRIAN USE ONLY. NO TRUCKS OR EQUIPMENT SHALL CROSS THE BRIDGE.

GENERAL NOTES:

- 1. PROTECT EXISTING BRIDGE, PAVEMENT, SIDEWALKS AND LAWN AREAS. CONTRACTOR SHALL REPAIR OR REPLACE ALL DAMAGED ELEMENTS AT NO ADDITIONAL COST TO CITY.
- 2. THE TENNEY PARK LAGOON WATER LEVEL CAN BE LOWERED APPROXIMATELY 1.5 FEET. CONTACT CITY PROJECT REPRESENTATIVE TO SCHEDULE WATER LEVEL CHANGES.

| DATE: | REVISIONS | NO. |
|-------|-----------|-----|
| | | |
| | | |
| | | |
| | | |
| | | |
| | | |
| | | |
| | | |
| | | |

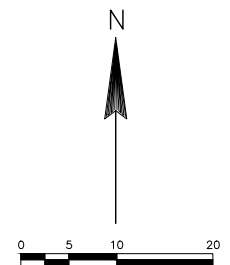
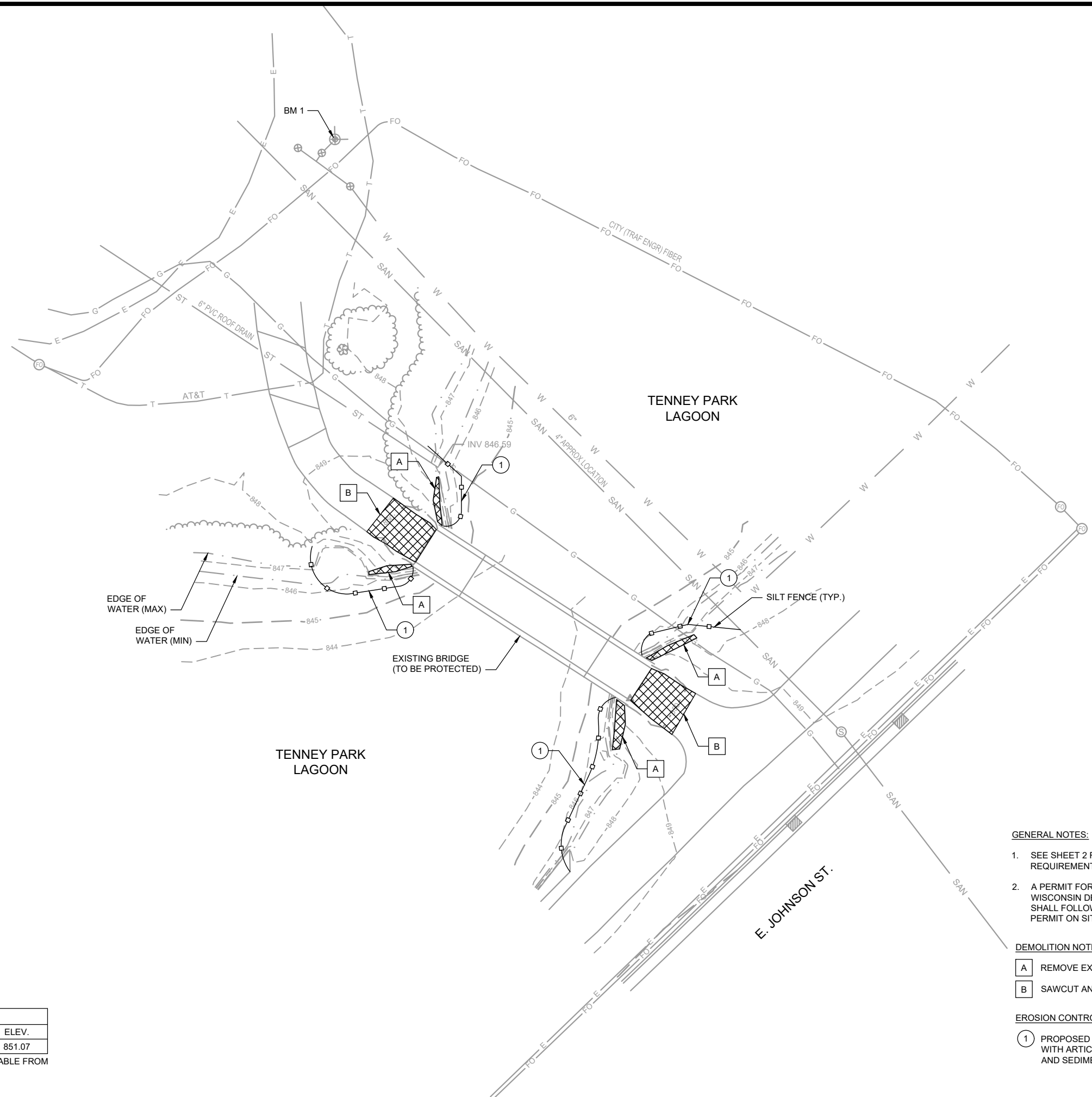
SITE ACCESS PLAN

TENNEY PARK EAST JOHNSON ST.
 PEDESTRIAN BRIDGE WING WALLS
 CITY OF MADISON, PARKS DIVISION
 DANE COUNTY, WI

JOB NO.
1020.125
PROJECT MGR.
BMO



SHEET
2



| BENCHMARK TABLE | | |
|-----------------|-----------------|--------|
| BM NO. | DESCRIPTION | ELEV. |
| 1 | HYDRANT TOP NUT | 851.07 |

NOTE: CONTROL POINTS IN VICINITY ARE AVAILABLE FROM CITY SURVEYOR UPON REQUEST

GENERAL NOTES:

- SEE SHEET 2 FOR SITE ACCESS PLAN AND SIDEWALK CLOSURE REQUIREMENTS.
- A PERMIT FOR THIS PROJECT HAS BEEN ISSUED BY THE WISCONSIN DEPARTMENT OF NATURAL RESOURCES. CONTRACTOR SHALL FOLLOW ALL PERMIT REQUIREMENTS AND SHALL POST PERMIT ON SITE IN ACCORDANCE WITH PERMIT TERMS.

DEMOLITION NOTES

- A** REMOVE EXISTING STACKED STONE RETAINING WALLS
- B** SAWCUT AND REMOVE EX. ASPHALT PATH

EROSION CONTROL NOTES

- 1** PROPOSED SILT FENCE AT LOCATIONS SHOWN IN ACCORDANCE WITH ARTICLE 210 AND WDNR CONSTRUCTION SITE EROSION AND SEDIMENT CONTROL STANDARD 1056.

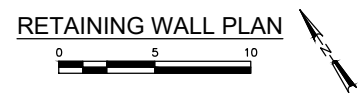
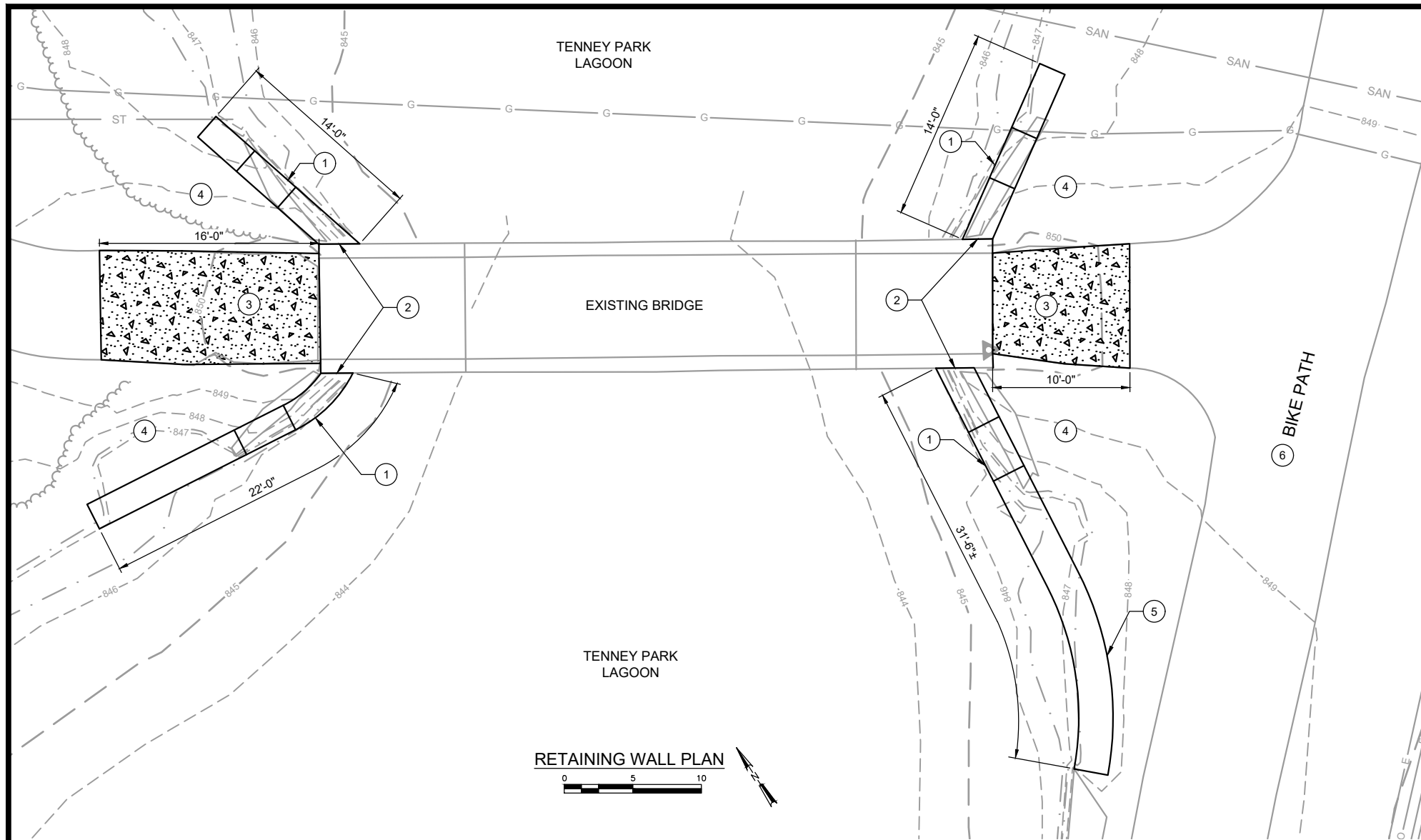
| NO. | REVISIONS | DATE: |
|-----|-----------|-------|
| | | |
| | | |
| | | |
| | | |

SITE DEMOLITION AND EROSION CONTROL PLAN
 TENNEY PARK EAST JOHNSON ST.
 PEDESTRIAN BRIDGE WING WALLS
 CITY OF MADISON, PARKS DIVISION
 DANE COUNTY, WI

JOB NO.
1020.125
PROJECT MGR.
BMO



SHEET
3

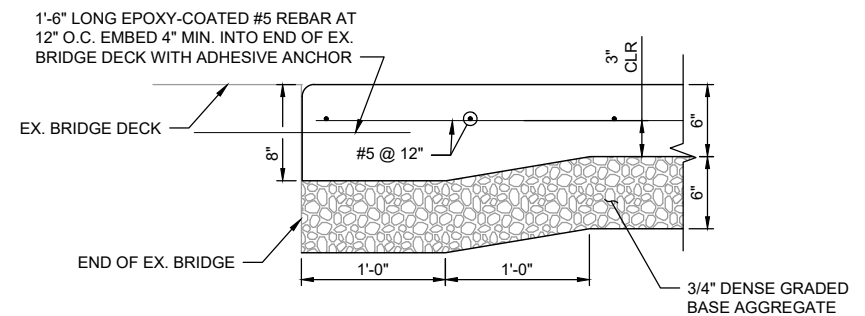


GENERAL NOTES

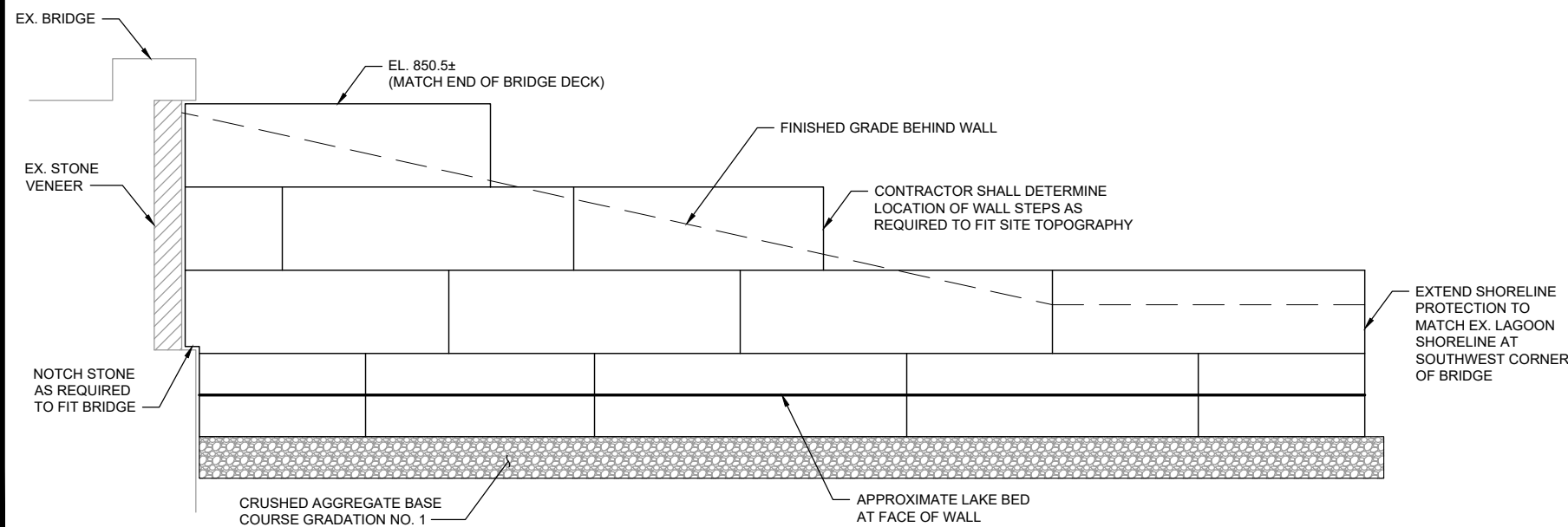
1. DRAWINGS SHALL NOT BE SCALED
2. ALL ELEVATIONS ARE IN FEET AND ARE REFERENCED TO NAVD88 DATUM.
3. WALL BACKFILL SHALL BE WRAPPED WITH WIRE FABRIC AND GEOTEXTILE TO PREVENT RODENT BURROWING BEHIND WALL. LAP WIRE FABRIC 6" MIN. AT SEAMS AND EXTEND FABRIC ACROSS THE TOP, ACROSS THE ENDS OF THE BACKFILL AND ALONG THE EXCAVATION BACK SLOPE TO COMPLETELY WRAP THE BACKFILL. WIRE MESH SHALL BE WELDED WIRE FABRIC OR CHAIN LINK FENCE GAUGE 12 OR HEAVIER, GALVANIZED WITH MAXIMUM OPENING SIZE OF 2"x2"

KEY NOTES

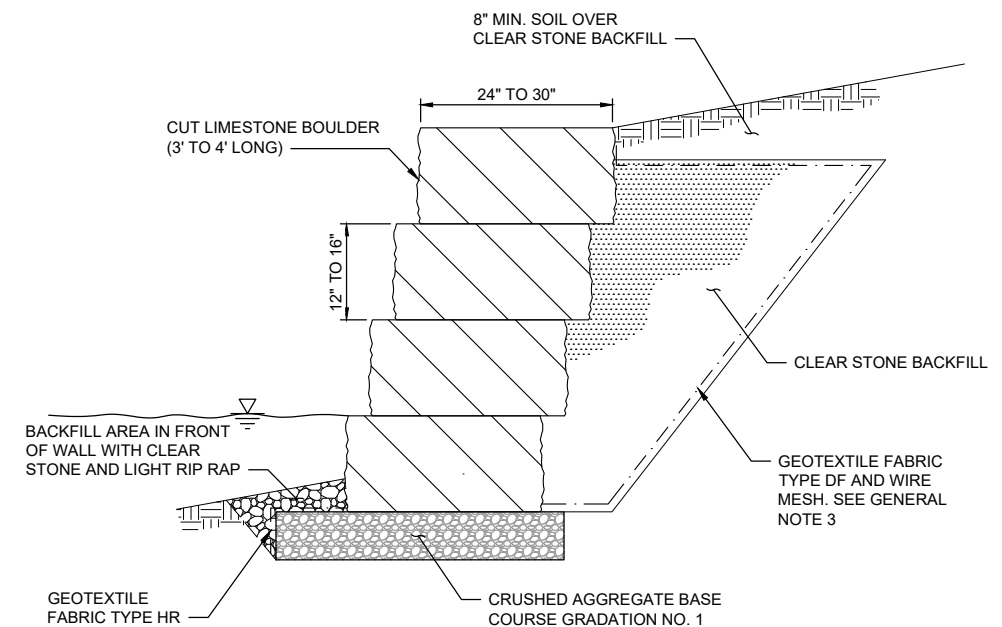
1. DRYSTACK LIMESTONE WALL, SEE TYPICAL RETAINING WALL SECTION. FINAL LAYOUT OF WALL SHALL BE DETERMINED IN FIELD TO BEST FIT THE SITE TOPOGRAPHY.
2. CUT THE END OF STONE BLOCKS AS REQUIRED TO FIT TIGHTLY TO BRIDGE. USE CARE TO PREVENT DAMAGE TO EX. BRIDGE WITH STONE VENEER WHEN SETTING RETAINING WALL BLOCKS. BACK OF WALL SHALL ALIGN WITH END OF BRIDGE.
3. 6-INCH CAST IN PLACE CONCRETE APPROACH SLAB.
4. RESTORE DISTURBED AREAS WITH 4" OF TOPSOIL SEED, FERTILIZER, AND MULCH IN ACCORDANCE WITH ARTICLE 207.
5. SHORELINE STABILIZATION STONES. MATCH EXISTING STONES TO THE WEST. PROVIDE STONE EDGE CONDITION BETWEEN EXISTING STONE EDGING AND NEW RETAINING WALL.
6. PROVIDE PEDESTRIAN TRAFFIC CONTROL SIGNS WHEN WORKING ON BIKE PATH. REFER TO SHEET 2.



CONCRETE APPROACH SLAB



TYPICAL WING WALL ELEVATION



TYPICAL WALL SECTION

| NO. | REVISIONS | DATE: |
|-----|-----------|-------|
| | | |
| | | |
| | | |
| | | |

RETAINING WALL PLAN AND DETAILS

TENNEY PARK EAST JOHNSON ST.
PEDESTRIAN BRIDGE WING WALLS
CITY OF MADISON, PARKS DIVISION
DANE COUNTY, WI

JOB NO.

1020.125

PROJECT MGR.

BMO



SHEET

4